

Richards Auction Service

Proudly Presents the:

2005 Tampa Bay
Carnival Glass Club
Convention Auction

9:00 am Saturday
February 5th, 2005

Preview Friday evening after Banquet
and Saturday 7:00 am to 9:00 am

at the

Hampton Inn 21030 US 19 N.

Clearwater, Florida 33765

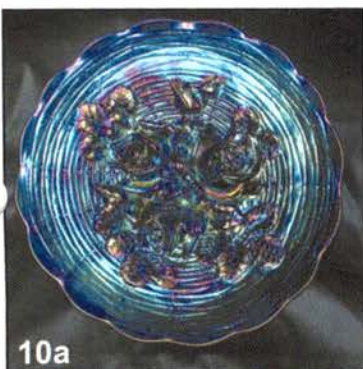
(727) 797-8173



5



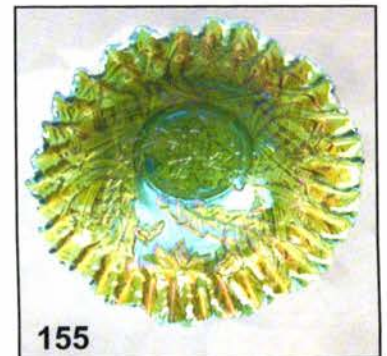
10



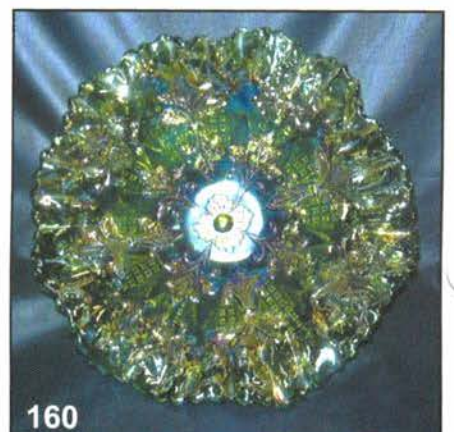
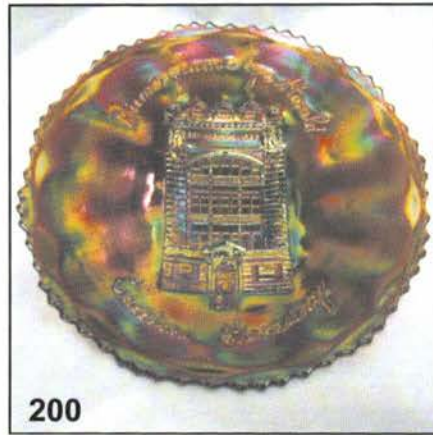
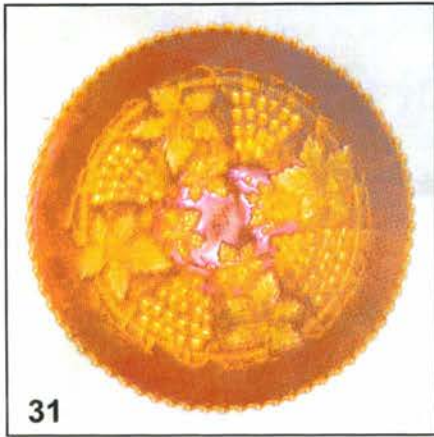
10a



220



155



We are pleased to offer the collection of Frank Reitsma of Canada and other items from the states. Mail, phone and E-mail bids must be in by February 4, 2005. You can call the Motel and ask for Bill Jr. or Bill Sr. or our cell phone at (330) 717-4985. E-mail us at Richar1955@aol.com.

Mail Bids Honored Under the Following Conditions:

- 1. No deposit required. Bidders will take full responsibility to honor any and all bids we execute for them.
- 2. Payment in full plus postage and handling required after notification and before we ship any item to them.
- 3. Items are bid on in perfect condition with average or above average iridescence OR as listed in the brochures. Bids will not be carried out when damage on an item has been found during the auction. **PEOPLE AT THE AUCTION ARE RESPONSIBLE FOR FINDING ANY PINHEADS, WEAR, SPOTTINESS, MANUFACTURER'S DEFECTS OR ANY OTHER MINOR FLAWS, ETC.**
- 4. Successful bidders will be notified by collect call from the auctioneer **SO BE SURE TO INCLUDE PHONE NUMBER.**
- 5. Phone inquiries about the glass or any other questions are welcome.
- 6. If you have some other person bidding at the auction for you, they must pay for the item before taking it.
- 7. Any terms or conditions given the day of the auction will supersede any previous published information.
- 8. Mail, E-mail, fax and phone bids are due by February 4, 2005.
- 9. Master Card, Visa, Discover and American Express accepted with a 4% clerking charge.

For more photos visit our website: www.richardsauction.com

Auctioneer
 Bill Richards III
 36 Water Street
 Poland, Ohio 44514
 Phone: (330) 757-2740
 Cell: (330) 717-4985

Fla. Lic.-AU1621

Sales Manager
 Ole Bill Richards
 44 Water Street
 Poland, Ohio 44514
 Phone: (330) 757-2001
 Fax: (330) 757-4917

- | | |
|---|--|
| <ul style="list-style-type: none"> _____ 1. Fenton Persian medallion hair receiver pumpkin marigold _____ 2. 5 1/2" Imperial SCROLL EMBOSSED individual berry bowl with file exterior electric purple _____ 3. 8" Imperial standard size ripple vase Helios green _____ 4. (2) 7" Imperial propeller FOOTED VASES marigold. Selling choice _____ 5. 9" Imperial grape vase swung from tumbler MOLD mid SIZE marigold. The first I've seen, a true rarity has a manufacturer check in base. Unbelievable item! _____ 6. 3 1/2" Imperial grape whimsey 2 sided top hat made from the tumbler dark marigold with pink irid. The only one I have seen, another great imperial item, but as with most whimseys has peeling around the top edge. _____ 7. 10 1/2" Imperial heavy grape 8 ruffled master berry bowl in amber _____ 8. 9 1/4" Imperial diamond lace 8 ruffled master berry bowl in purple. Super irid. _____ 9. 9" Imperial Star of David Bowl electric purple. Super irid. _____ 10. N. Dandelion 7 pc. tankard water set frosty white. extremely rare, well matched set, very seldom seen, pink iridescence, and stretch effect . A true rarity. | <ul style="list-style-type: none"> _____ 10A. 9 1/4" Northwood rose show flat plate electric blue. one of the best I have ever seen perfect, beautiful. _____ 11. Northwood Rose show 8 ruffled bowl Aqua with opalescent. Pastel with a slight butterscotch overlay _____ 12. 9 1/4" Northwood Rose show flat plate white. Great iridescence, has yellow highlights. _____ 13. 8 3/4" Northwood Rose show 8 ruffled bowl honey amber, Fabulous iridescence an extreme rarity has chips on 2 roses. "who cares? you wont find a better one." _____ 14. 11" Northwood Diamond Points vase purple with fantastic iridescence, a great vase. _____ 15. 10 1/4" Northwood 4 pillar vase aqua opalescent. Has tiny flake on one toe. _____ 16. 8 1/4" Northwood thin rib jester's cap vase green. One of the prettier ones. _____ 17. 8 3/4" Northwood thin rib vase purple with super iridescence. _____ 18. 7 1/4" Northwood diamond points squatty vase dark marigold. Very desirable vase. _____ 19. 10" Northwood diamond points swung vase purple. Another beauty has multi-colored electric iridescence. _____ 20. 11" Northwood tree trunk swung vase sapphire with marigold overlay. A bit silvery to the top but a rare color on a rare Base Glass. |
|---|--|

- _____ 21. 6" Northwood tree trunk squatty vase green with above average iridescence.
- _____ 22. 12 1/2" Northwood tree trunk mid size vase purple has bronze iridescence.
- _____ 23. 8 1/4" Northwood wishbone 8 ruffled footed bowl ruffles and rings exterior purple.
- _____ 24. 9" Northwood 3 fruits plate plain exterior dark marigold. Nice example.
- _____ 25. **9" Northwood 3 fruits plate plain exterior multi-colored iridescence Green. A super plate.**
- _____ 26. 8 1/2" Northwood nippon pie crust edge bowl white with multi colored iridescence. Super.
- _____ 27. 9" Northwood good luck plate basket weave exterior light marigold. Below average iridescence.
- _____ 28. 7 3/4" Northwood good luck 8 ruffled bowl basketweave exterior green with bronze iridescence.
- _____ 29. **8 1/2" Northwood good luck stippled p.c.e. bowl ribbed exterior pastel marigold. Fabulous.**
- _____ 30. **9" Northwood good luck plate basketweave exterior green. One of the better examples I have seen.**
- _____ 31. **9" Grape and Cable flat plate basketweave exterior pumpkin marigold . Fantastic.**
- _____ 32. 8 1/4" Northwood Hearts and flowers 8 ruffled bowl ribbed exterior mid, marigold. Nice Iridescence.
- _____ 33. **8 1/2" Northwood hearts and flowers 8 ruffled bowl plain exterior frosty white with great iridescence.**
- _____ 34. Northwood hearts and flowers ruffled compote electric blue.
- _____ 35. Northwood hearts and flowers ruffled compote white.
- _____ 36. Northwood hearts and flowers ruffled compote marigold. small chip on base.
- _____ 37. **9" Northwood strawberry plate basket weave exterior purple with radium iridescence.**
- _____ 38. 9" Northwood strawberry plate with super satiny multi colored iridescence in purple.
- _____ 39. 8 3/4" Northwood strawberry 8 ruffled bowl purple with electric blue iridescence.
- _____ 40. **8 3/4" Northwood peacocks 8 ruffled bowl aqua opalescent with pastel iridescence. This one's a keeper.**
- _____ 41. 9" Northwood peacocks plate plain exterior ice green. Beautiful.
- _____ 42. 9" Northwood peacocks plate ribbed exterior frosty white. Exceptional.
- _____ 43. 6 1/4" Northwood grape and cable hand grip plate purple.
- _____ 44. 8 1/4" Northwood grape and cable p.c.e. Bowl basketweave exterior green with blue iridescence.
- _____ 45. **9"grape and cable variant plate purple with awesome iridescence. One of the better one's you'll find.**
- _____ 46. Northwood drapery candy dish has good feet marigold and great iridescence.
- _____ 47. Northwood drapery candy dish has good feet ice blue and nice iridescence.
- _____ 48. 8 3/4" Northwood drapery 3 toed vase white.
- _____ 49. 8" drapery variant vase mid marigold.
- _____ 50. Northwood daisy and drape cupped in vase white great iridescence.
- _____ 51. 10 1/2" Northwood fine rib swung vase amethyst.
- _____ 52. 10 3/4" Northwood thin rib swung vase purple. Excellent iridescence.
- _____ 53. Northwood flute variant squatty handled water pitcher with beaded handle and hexagonal base marigold. A rare item seldom seen marigold.
- _____ 54. 5 1/2" Northwood peacock at the urn individual ice cream bowl electric purple.
- _____ 55. **Northwood Raspberry water pitcher purple with electric blue iridescence. The best one I have ever seen or sold.**
- _____ 56. Northwood daisy and plume exterior fern interior ruffled compote purple. Has exceptional iridescence.
- _____ 57. Northwood blackberry ruffled compote basket weave exterior amethyst.
- _____ 58. Northwood blackberry ruffled compote basket weave exterior green .
- _____ 59. Northwood poppy relish marigold with bright pastel iridescence.
- _____ 60. Northwood wide panel 5 pc. epergne marigold has MINOR ROUGHNESS on the top of the base where the lily's go in.
- _____ 61. Northwood 3 fruits medallion footed ruffle bowl with meander exterior purple with bright multi colored iridescence.
- _____ 62. 8 1/2" Northwood 3 fruits p.c.e. bowl plain exterior dark marigold.
- _____ 63. 7 1/2" Northwood fruits and flowers ruffled bowl marigold.
- _____ 64. 7 1/4" Northwood fruits and flowers plate marigold.
- _____ 65. **7 1/2" Northwood fruits and flowers flat plate green with pink iridescence. Absolutely fabulous one of the best.**

- _____ 66. Northwood corn Vase with stalk Base ice green.
- _____ 67. Northwood leaf and beads rose bowl floral interior half of one foot missing green with fantastic iridescence.
- _____ 68. Northwood beaded cable rose bowl dark marigold with rich iridescence.
- _____ 69. Northwood beaded cable rose bowl purple with blue iridescence. A great example.
- _____ 70. **Northwood hearts and flowers 8 1/4" ruffled bowl ribbed exterior dark marigold. A real beauty.**
- _____ 71. Northwood 8 sided handled bushel basket purple.
- _____ 72. 8 1/4" Northwood embroidered mums ruffled bowl marigold a bit light on iridescence.
- _____ 73. **Northwood blackberry and rays ruffled compote amethyst. One of the better one's I have seen has multi colored bright iridescence, a very rare compote.**
- _____ 74. **9" Northwood poppy show plate in white has super pastel iridescence, a nice plate.**
- _____ 75. **Northwood peacock at the fountain ruffled footed fruit bowl blue with multi colored highlights**
- _____ 76. **8 3/4" Northwood 3 FRUITS stippled plate purple with blue iridescence. The proceeds of this plate go directly to the club compliments of Richards Auction Service.**
- _____ 77. 13" with 11 1/2" flare and a 5" base Imperial parlor panels swung funeral vase, amber. Has a bruise on the base and several chips. A rare as is item.
- _____ 78. 9" Imperial grape ruffled plate true lavender scarce color.
- _____ 79. **Imperial fashion ruffled punch base almost looks like it was made to be a giant compote marigold. Kind of an unique item.**
- _____ 80. 10" Imperial acanthus chop plate marigold.
- _____ 81. Imperial grape water carafe electric purple fabulous blue iridescence.
- _____ 82. Imperial grape wine bottle no stopper smoke.
- _____ 83. 9 1/4" IMPERIAL GRAPE flat plate with multi colored iridescence green (this one is not Helios)
- _____ 84. **Imperial grape nut bowl aqua/ teal an extremely rare shape and color seldom seen, very hard to find in any color.**
- _____ 85. **9" Imperial BEADED bullseye vase electric purple.**
- _____ 86. 7 3/4" Imperial embossed scroll bowl plain exterior purple with electric iridescence.
- _____ 87. **Three premium candle stix with peg lamp wax ring marigold. Marked victory life candle co. Osh Kosh Wis.**
- _____ 88. 5" (5) Imperial grape individual berry bowls purple beautiful iridescence
- _____ 89. 7 1/4" tall x 5 1/2" flare Imperial squatty rippled vase marigold.
- _____ 90. **Pair of Imperial Chesterfield candle stix in Amberina. Manufacturers damage on one stick UNDER BASE from grinding. Beautiful and rare.**
- _____ 91. Imperial Corn bottle marigold
- _____ 92. Imperial fashion giant rose bowl marigold
- _____ 93. Imperial PLAIN JANE stretch handled flower basket smoke.
- _____ 94. Imperial Poinsettia milk pitcher marigold pink iridescence. Fantastic.
- _____ 95. **Imperial Octagon lg. size water pitcher purple has blue highlights towards the top a bit silvery towards the base. Seldom seen seldom sold.**
- _____ 96. Imperial Octagon collar Base tumbler purple. Has above average iridescence.
- _____ 97. Imperial windmill milk pitcher marigold. Fantastic color.
- _____ 98. Imperial stretch balloon handled cake plate smoke. Very rare
- _____ 99. 7 1/4" Imperial scroll embossed deep round bowl purple beautiful electric iridescence.
- _____ 100. **Imperial open rose 8 ruffled bowl amber. Beautiful**
- _____ 101. 11" Imperial open rose 8 ruffled master berry bowl smoke. Seldom seen seldom sold.
- _____ 102. Fostoria summer garden flat compote clear iridescent, gilded edged
- _____ 103. Imperial Hobbstar flower ruffled compote helios green.
- _____ 104. Imperial Flute and cane Sherbet marigold.
- _____ 105. Northwood memphis 6 pc. punch set purple. Well match, a nice set.
- _____ 106. 6 1/4" Northwood leaf columns squatty vase purple.
- _____ 107. Jeanette 5" base 6" tall rabbit penny bank light marigold
- _____ 108. Jeanette 3" base Rabbit 3 1/2" tall penny bank light marigold.
- _____ 109. 9 1/2" Loetz type ribbed and swirled vase green
- _____ 110. **Brocwitz zipper stitch Cordial decanter with stopper marigold.**

- _____ 111. 7x7" sowerbery daisy and cane square plate marigold.
- _____ 112. 8" heisey handled oblong flower basket iridescent frosted amethyst flash signed PAT,D. first one I have seen.
- _____ 113. 10 1/2" Fostoria brocade palms luncheon plate with gold edge clear iridescent . Only piece of clear iridized Fostoria we have seen.
- _____ 114. Figural sitting dog candy container marigold flash.
- _____ 115. **8 1/4" Dugan circled scroll swung vase purple with electric blue iridescence**
- _____ 116. 7 1/2" Dugan circled scroll swung vase purple with gold highlights.
- _____ 117. 7 1/2" Dugan starfish two handled bon bon purple highlights.
- _____ 118. 4 3/4" Dugan venetian line two sides up cuspidor shape vase amethyst rolled in frit.
- _____ 119. **7 1/2" Dugan tricornered 6 petals bowl purple with electric iridescence.**
- _____ 120. **Dugan swan master salt with brass souvenir tag attached to neck from Albany, NY superior iridescence. One of the best I have seen.**
- _____ 121. 9 3/4" Dugan lined lattice vase purple. Good iridescence.
- _____ 122. 13 3/4" Dugan spiralex swung vase purple.
- _____ 123. 6" Dugan thin rib spittoon shaped vase peach opalescent.
- _____ 124. 10 1/4" Dugan Petal and fan large 8 ruffled master berry bowl purple with multi colored iridescence
- _____ 125. Dugan fisherman mug purple, A BEAUTIFUL EXAMPLE.
- _____ 126. 5" Dugan leaf ray ruffled nappy electric purple.
- _____ 127. 9" Dugan windflower flat plate light marigold.
- _____ 128. 6 1/2" Dugan grapevine & lattice ruffled bowl or plate white.
- _____ 129. 6" Dugan Persian gardens plate basket weave exterior dark marigold.
- _____ 130. **9" Dugan doomed footed bonder plants hand grip plate purple with blue and yellow iridescence stretch effect on entire outer edge. One of the best I have seen.**
- _____ 131. 6 1/2" Dugan QUESTION MARK doomed footed plate peaches and pears exterior light marigold.
- _____ 132. Dugan fanciful ruffled T.C.E. bowl peach opal
- _____ 133. 8 1/4" Dugan apple blossom twigs ice cream shaped bowl peach opal. Large flake on one point.
- _____ 134. Dugan nautilus breakfast set sugar and creamer (creamer is unsigned, sugar signed). Northwood in script, selling choice.
- _____ 135. **6 3/4" Dugan grapevine & lattice flat plate purple with electric blue iridescence. Super plate!**
- _____ 136. 6" Dugan Mary Ann Handled vase purple tough color.
- _____ 137. 9 1/4" Dugan intaglio cherry and cable I.C.S. master berry bowl marigold. The first one I have seen.
- _____ 138. 6- 4 3/4" Dugan intaglio cherry and cable individual berry bowl marigold. Selling choice.
- _____ 139. 9 1/2" Dugan wishbone and spades 8 ruffled master berry bowl Dark peach opal. A rare Dugan product, and one of the best I have seen.
- _____ 140. **Dugan grapevine & lattice 7 piece water set marigold. A hard set to find-complete. Great iridescence.**
- _____ 141. Dugan many fruits 8 piece punch set round bowl round base amethyst.
- _____ 142. **Beaded Marquis fleur Di Lis and flower 1 1/2" bar shaped hat pin. Dark with blue iridescence.**
- _____ 143. 5 hat pins including triad 2 big butterflies koolie hat and narrow plume. I don't know much about hatpins can be viewed on web site. Selling choice.
- _____ 144. 7 3/4" WestMoreland corinth plate/ bowl blue opalescent scarce shape and size.
- _____ 145. 9 1/2" European pods and posies / 4 flowers variant flat plate emerald green
- _____ 146. 9 1/2" European pods and posies / 4 flowers variant flat plate amethyst
- _____ 147. 7 1/2" ChecZ Santa Maria handled water jug light marigold. Fantastic art work first one I have seen. Has polished pontil and crackle hand decoration.
- _____ 148. Pyramid shape french style 5" perfume bottle and SMOKE STOPPER with brass fitter and ink well top on the stopper. I don't know the maker it is the first cranberry flash one I have seen.
- _____ 149. 9 1/4" Cambridge deep round master berry bowl inverted strawberry signed NEAR CUT great marigold iridescence, rare item.
- _____ 150. (5) 4 1/2" inverted strawberry individual bowls very rare marigold. Selling choice.
- _____ 151. Millersburg Boutonniere stemmed ruffled compote marigold with radium iridescence
- _____ 152. Millersburg Boutonniere stemmed ruffled compote radium amethyst

- _____ 153. Millersburg Boutonniere stemmed ruffled compote radium green
- _____ 154. 8" Millersburg Mayan ice cream shaped bowl radium green
- _____ 155. **9" Millersburg whirling leaves deep round T.C.E. edge bowl, Radium Green has pink and blue iridescence the only one in this shape I have ever seen not just rare but beautiful as well.**
- _____ 156. **9 1/4" Millersburg whirling leaves tri corner T.C.E. bowl green with radium iridescence**
- _____ 157. 9 1/4" Millersburg whirling leaves salad bowl scarce shape light radium marigold iridescence
- _____ 158. 9 1/2" Millersburg Fleur De Lis dome footed crimped edge bowl amethyst satiny iridescence tiny flake on one toe.
- _____ 159. Millersburg Fleur De Lis dome footed tri corner T.C.E. bowl marigold radium iridescence may have pin head on one or two toes very common to this pattern.
- _____ 160. **9 1/4" Millersburg Fleur De Lis Dome footed ruffled T.C.E. bowl emerald green with radium iridescence**
- _____ 161. 7 1/2" Millersburg little stars 6 ruffled bowl green with satiny iridescence.
- _____ 162. 9" Millersburg rays and ribbon 6 ruffled bowl marigold with radium iridescence gets a little light to the edge.
- _____ 163. 9 1/2" Millersburg Rays and Ribbons 6 ruffled bowl amethyst with goldish radium type iridescence
- _____ 164. 9 1/4" Millersburg Rays and Ribbons 6 ruffled bowl satiny green
- _____ 165. **9 1/4" Millersburg Rays and Ribbons 6 ruffled bowl radium green with emerald iridescence**
- _____ 166. Millersburg Holly whirl 2 sides up handled bon bon Radium amethyst.
- _____ 167. 9 1/2" Millersburg primrose 6 ruffled bowl mid marigold radiant iridescence.
- _____ 168. 8 1/2" Millersburg BlackBerry Wreath I.C.S. individual sauce radium amethyst
- _____ 169. 5 1/2" Millersburg Black Berry Wreath IC.S. individual sauce radium amethyst
- _____ 170. **8 1/4" Millersburg Black Berry Wreath 3 in 1 edge radium amethyst**
- _____ 171. **9 1/2" Millersburg swirl hobnail swung vase amethyst with great iridescence**
- _____ 172. 2- 5" Millersburg grape wreath variant tight crimped edge ruffled sauces Marigold radium iridescence. Selling choice.
- _____ 173. 5 1/4" Millersburg BlackBerry Wreath T.C.E. sauce pastel marigold with radium pink highlights.
- _____ 174. 2 5/2" Millersburg grape wreath I.C.S. sauces radium amethyst . Super!
- _____ 175. 9 1/2" Millersburg nesting swan 6 ruffled bowl green with multi colored satiny iridescence
- _____ 176. 8 1/2" Millersburg grape wreath 3 in 1 edge bowl dark marigold great iridescence.
- _____ 177. 7" Millersburg grape wreath 3 in 1 edge bowl light marigold.
- _____ 178. **7 " Millersburg grape wreath bowl radium green**
- _____ 179. 8 1/4" Millersburg BlackBerry wreath cereal bowl shape bowl green with spotty satiny iridescence
- _____ 180. **7" Millersburg tri cornered Holly whirl bowl amethyst with radium iridescence.**
- _____ 181. **10" Millersburg Rosalind ruffled bowl amethyst with radium iridescence**
- _____ 182. **10" Millersburg seaweed 3 in 1 edge bowl green with super satiny iridescence. Has aqua tint @ base**
- _____ 183. 10" Millersburg whirling leaves 6 ruffled bowl amethyst with satin iridescence
- _____ 184. 8 1/4" Millersburg Holly whirl 6 ruffled bowl amethyst with radium iridescence
- _____ 185. Millersburg Holly sprig tri cornered handled nappy amethyst with radium iridescence
- _____ 186. Millersburg Holly sprig two handled two sides up nappy marigold with radium iridescence.
- _____ 187. **Millersburg poppy stemmed compote potpourri exterior green with radium pink and blue iridescence minor pin heads on geometric part of exterior pattern.**
- _____ 188. 9 3/4" Millersburg swirl hobnail swung vase amethyst with radium iridescence (may have manufacturers peeling on one point)
- _____ 189. **8 3/4" Millersburg trout and fly bowl 3 in 1 edge amethyst a super satin example**
- _____ 190. **9 1/2" Fenton heart and vine flat plate with compliments of SPECTORS deparment store advertising marigold**
- _____ 191. 9" Fenton orange tree plate clam broth iridescence
- _____ 192. 8 3/4" Fenton peacock and grape 8 ruffled bowl electric blue one of the better examples you could hope to find.
- _____ 193. 6 1/4" Fenton pine cone small plate blue with goldish and silvery iridescence.
- _____ 194. 7 1/2" Fenton leaf chain flat plate with gooseberry exterior blue with Goldish iridescence

- _____ 195. **6" Fenton water lily 6 ruffled individual footed sauce reverse amberina opalescent has so much opalescent that feet are opaque and the body of the bowl appears to be Opaque. Great iridescence on Great rarity.**
- _____ 196. Fenton water lily 6 ruffled sauce Vaseline with marigold overlay
- _____ 197. Fenton Horse head medallion footed nut bowl marigold with Vaseline overlay. Very scarce color for this shape and pattern
- _____ 198. Fenton Horse head J.I.P. footed bowl in marigold
- _____ 199. 7" Fenton lions 6 ruffled bowl dark marigold. A NICE EXAMPLE.
- _____ 200. **9" Fenton 1911 seasons greetings Birmingham age Herald flat plate radium amethyst with excellent detail one of the best I have seen.**
- _____ 201. 8 3/4" Fenton ribbon tie 3 in 1 edge bowl blue with electric highlights
- _____ 202. 10" Fenton 10 mums 6 ruffled collar based bowl amethyst with pink and gold highlights
- _____ 203. Fenton orange tree handled loving cup green with goldish iridescence a scarce color.
- _____ 204. 5 3/4" Fenton spittoon shaped stemmed ruffled compote case green.
- _____ 205. **7 1/2" Fenton Illinois soldiers and sailors home plate souvenir of Quincy Ill. electric blue. A great example-geese berry exterior.**
- _____ 206. Fenton peacock at urn ruffled compote marigold
- _____ 207. 8 3/4" Fenton peacock @ the urn 6 ruffled bowl dark marigold
- _____ 208. Fenton Peacock @ urn ruffled bowl- blue gold to edges
- _____ 209. Fenton 8 3/4" 8 ruffled bowl green, blue iridescence Rare Color
- _____ 210. **Fenton peacock @ urn 9 1/4" flat plate blue with electric highlight soft pink iridescence vibrant. a great plate**
- _____ 211. **9 1/4" Fenton peacock @ urn flat plate blue multi color iridescence. A great example**
- _____ 212. **9 1/4" Fenton peacock @ urn flat plate marigold great iridescence nearly pumpkin**
- _____ 213. Fenton grape and cable small size ruffled fruit bowl dark marigold great iridescence
- _____ 214. Fenton Mikado ruffled compote marigold
- _____ 215. **9" Fenton orange tree plate pumpkin marigold. This is the one everybody's looking for. Super color**
- _____ 216. Fenton orange tree footed ruffled fruit bowl blue with electric highlights
- _____ 217. 9" Fenton leaf chain 6 ruffled bowl with bearded berry exterior blue nice iridescence
- _____ 218. 8 1/4" Fenton heart and vine 3 in 1 edge bowl light amethyst very attractive.
- _____ 219. Fenton wild black berry C.R.E. bowl green a bit silvery
- _____ 220. **9 1/4" Fenton Peacock and grape collar base plate electric blue with stretch effect towards edges and fabulous iridescence. I have only sold a couple of these in 20 years. This is by far the best WE have ever had the privilege to sell.**
- _____ 221. 7 3/4" Fenton peacock and grape spatula footed bowl green with bright multi colored iridescence.
- _____ 222. 8 3/4" Fenton peacock tail 3 in 1 edge bowl green
- _____ 223. 7" Fenton TWO fruits TWO handled divided bon bon blue
- _____ 224. Fenton two sides up birds and cherries TWO handled bon bon blue multi colored iridescence
- _____ 225. **6 1/2" Fenton vintage deep round bowl amethyst opalescent with radiant type finish a true Fenton rarity seldom offered for sale.**
- _____ 226. 11" Fenton plume panels ruffled vase in amethyst nice color and iridescence
- _____ 227. 9" Fenton rustic swung vase white nice iridescence
- _____ 228. 15 1/4" Fenton rustic mid sized vase marigold - 4 1/4" base
- _____ 229. 9 1/4" Fenton 3 fruits plate amethyst bronze iridescence
- _____ 230. **4" tall x 4" flare Fenton Holly goblet shaped compote ice green opalescence with heavy opalescent and marigold overlay. Rare item and nice example**
- _____ 231. Fenton holly ruffled compote blue silvery iridescence
- _____ 232. Fenton holly ruffled compote blue multi colored iridescence

- _____ 233. 8" Fenton holly ice cream shaped bowl blue with pastel highlights
- _____ 234. 9" Fenton holly 8 ruffled bowl blue with bright multi color iridescence
- _____ 235. 9" Fenton holly flat plate blue with electric iridescence and stretch effect one of the better examples WE will ever sell.
- _____ 236. 9" Fenton holly flat plate blue with satiny iridescence this ones pretty good too.
- _____ 237. **9" Fenton holly flat plate pumpkin mari gold about as good as these get**
- _____ 238. 9" Fenton holly flat plate marigold with mirror finish large bubble in body of the plate shown at 12:00 on the website
- _____ 239. **9" Fenton holly 8 ruffled bowl purple with nearly electric iridescence. Rare color for this bowl one of the best and darkest I have seen**
- _____ 240. **9" captive rose plate blue with bright multi colored iridescence. Better than most.**
- _____ 241. 9" Fenton heart and vine flat plate blue silvery goldish iridescence
- _____ 242. 6 piece Fenton butterfly and berry footed table set marigold. A well matched set but selling item choice
- _____ 243. **6 1/4" Fenton two flowers spatula footed rose bowl blue with electric highlights**
- _____ 244. **7 3/4" dragon and lotus spatula footed ice cream shape bowl green with great iridescence**
- _____ **245. 9 1/4" Fenton 8 ruffled butterfly and berry master berry bowl marigold with opalescent slag through the base has nearly opaque feet AND opalescent slag towards the top. second one I have seen an extreme Fenton rarity.**
- _____ 246. 8 1/2" Fenton Dragon and lotus 8 ruffled bowl blue with bright iridescence.
- _____ 247. Fenton TWO row open edge basketweave small size basket blue
- _____ 248. Fenton two row open edge ruffled basketweave ruffled basket blackberry interior green.
- _____ 249. Fenton two row open edge basketweave two sides up basket blue
- _____ 250. **Fenton two row open edge two sides up basketweave basket reverse amberina opalescent has vivid opalescence and cherry red tips with a cherry red base scarce item hard to find this is one of the better examples.**
- _____ 251. **Fenton two row two sides up basketweave small size basket violet blue with marigold overlay a rare color in this shape.**
- _____ 252. **Fenton two row large size square ruffled basket Celeste blue perfect and a pretty hard to find item**
- _____ 253. **6 1/2" Fenton two row basket weave ice cream shape basket Celeste blue. Super item**
- _____ 254. **5" Fenton two row open edge basket weave 6 ruffled basket Celeste Blue. a rare shape and size in any color this one has fabulous iridescence**
- _____ 255. **Fenton two row open edge blackberry vase has a powder blue base the only one I have seen in this color has light marigold overlay but it does have a small chip on the base.**
- _____ 256. **Fenton two row two sides up basket red. a scarce basket**
- _____ 257. **Fenton blackberry spray J.I.P. T.C.E. red. Nice shape nice color.**
- _____ 258. **Fenton Blackberry spray 6 ruffled hat shape amberina nice iridescence**
- _____ 259. 11" Fenton stag and holly footed 8 ruffled bowl dark marigold
- _____ 260. **Fenton stag and holly footed giant rose bowl marigold with great iridescence scarce item.**
- _____ 261. 11" Fenton stag and holly 8 ruffled bowl blue good iridescence but has 2 pulled points
- _____ 262. 10 1/2" Fenton stag and holly ball footed ruffled bowl amethyst a very scarce color for this item has average iridescence.
- _____ 263. Fenton Magnolia and drape applied handled enamel decorated water pitcher dark marigold, a nice example.
- _____ 264. 9 1/2" Australian 16 ruffled kookubura bowl dark marigold has registry number a fine example.
- _____ 265. 7" tall x 9 3/4" wide with a 4 1/2" base Australian Butterfly and Bower stem compote dark marigold
- _____ 266. 10" 8 ruffled Australian king fisher large bowl marigold nice example.
- _____ 267. 6 1/2" front x 8 1/2" back WestMoreland corinth swung J.I.P. vase peach opalescent
- _____ 268. **3 1/2" tall loetz crimped edge honey comb style art glass rose bowl green with stretch iridescence**
- _____ 269. (2) 3 3/4" unlisted Australian tumblers I will call them thumb print and diamond point band, but what do I know? You can view the pictures one the website.

- | | | | |
|------------|---|------------|---|
| _____ 270. | Northwood Grape and Cable covered powder jar with lid purple. | _____ 274. | 7 1/2" Flared Northwood wild rose nut bowl blue opalescent not carnival |
| _____ 271. | 4 1/2" Jain???????????? water set tumbler dark marigold | _____ 273. | 5 1/2" Jain???????????????? large tankard ice tea tumbler aqua teal |
| _____ 272. | 5 1/2" flared jain???????????? large tankard tumbler marigold. | _____ 274. | 7 1/2" Flared Northwood wild rose nut bowl blue opalescent not carnival |
| _____ 273. | 5 1/2" Jain???????????????? large tankard ice tea tumbler aqua teal | _____ 275. | Fenton iris green ruffled compote scarce color for any piece of Fenton |
-

We thank each and every one of you for attending the sale today. We hope you and yours have a great new year and hope to see you soon.

*Ole Bill, Billy
and Carole*

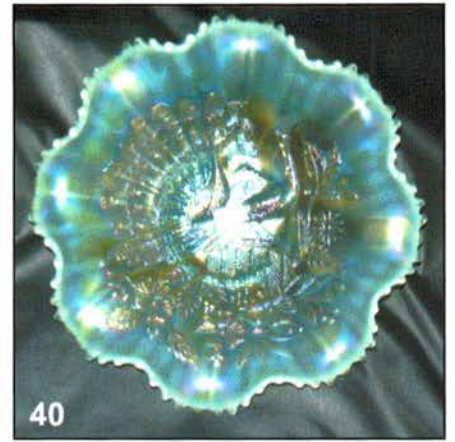
NOTES



65



55



40



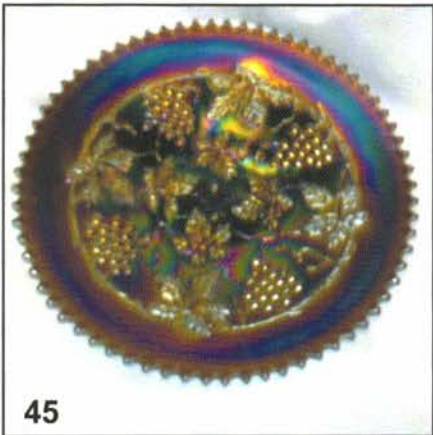
212



230



6



45



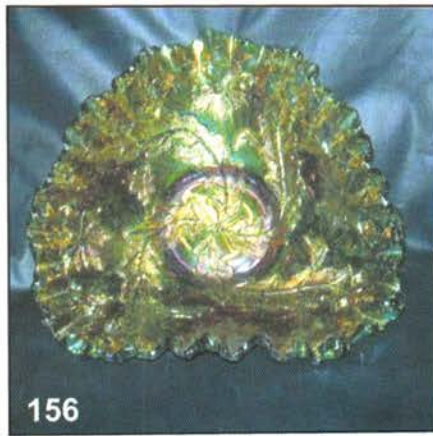
90



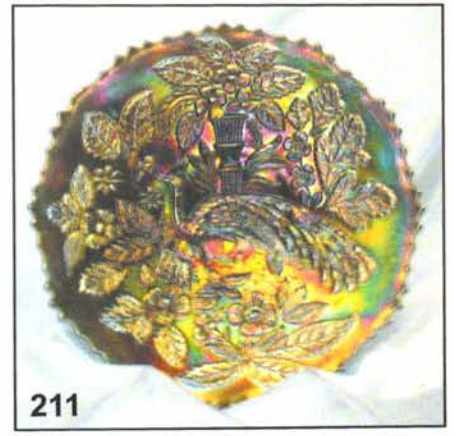
60



140



156



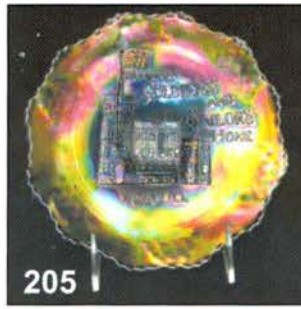
211



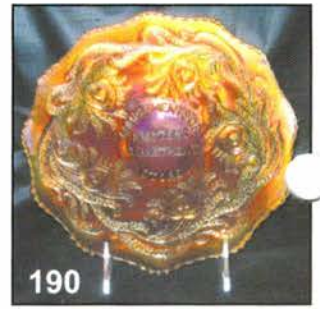
215



115



205



190



75



70



84



120



250



245



245



195

LEE MARKLEY
BOX 306
MENTONE IN 46539

2005 Tampa Bay Convention Auction!



Richards Auction Service
44 Water Street
Poland, Ohio 44514

