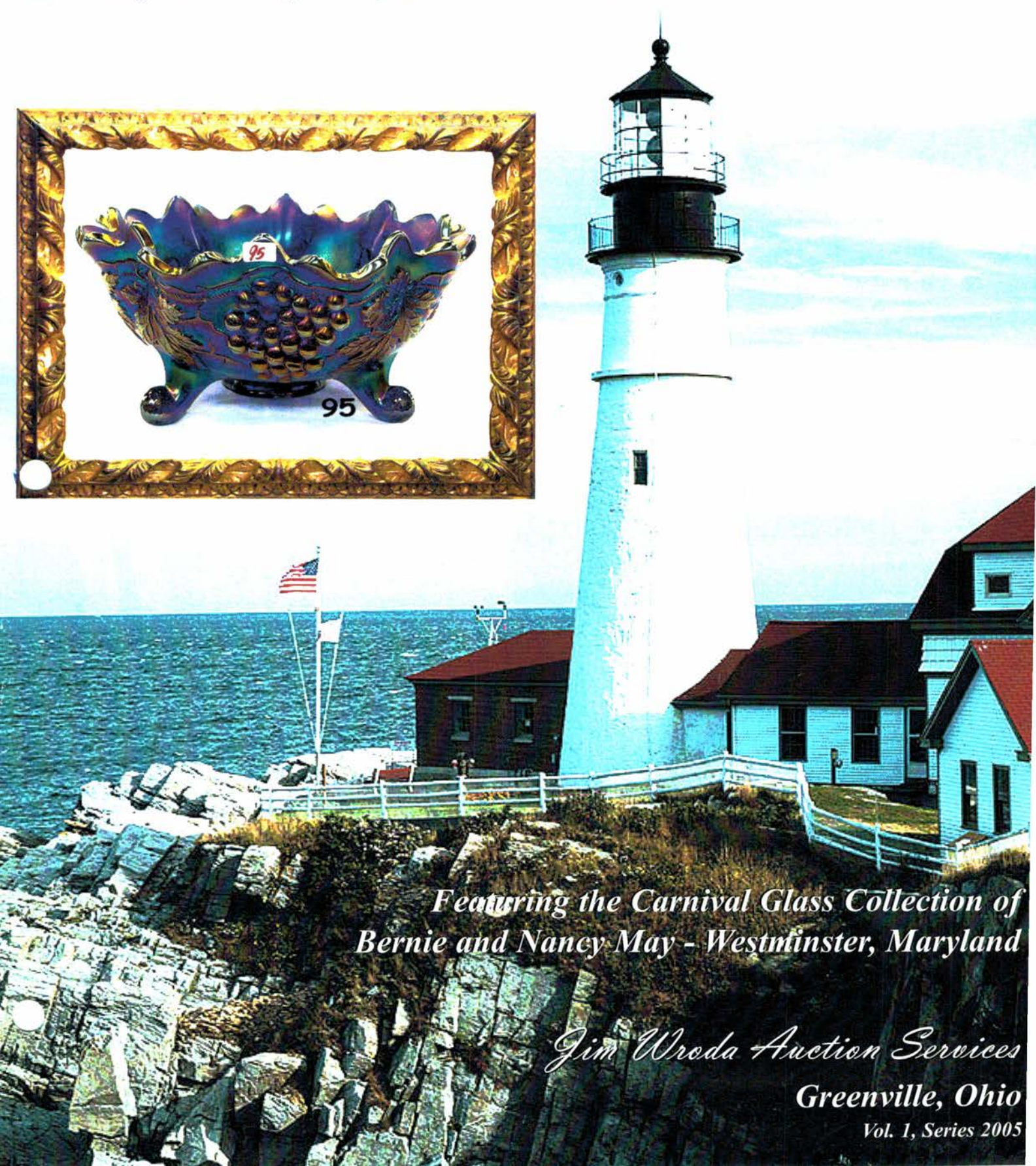


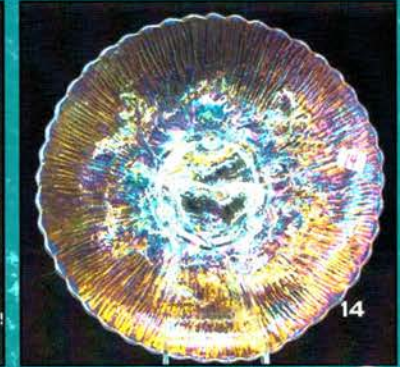
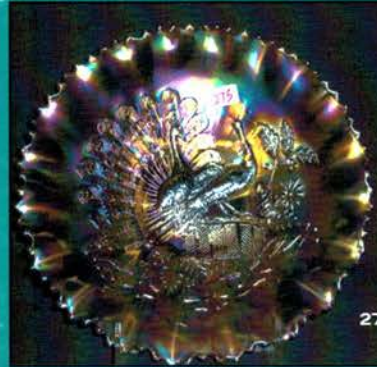
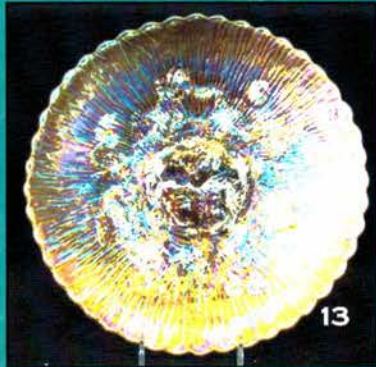
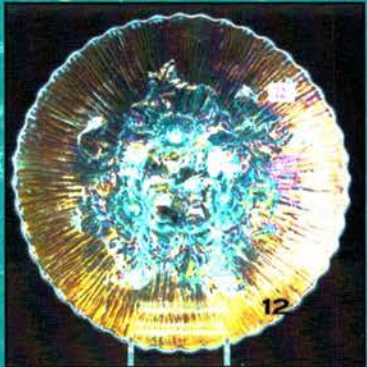
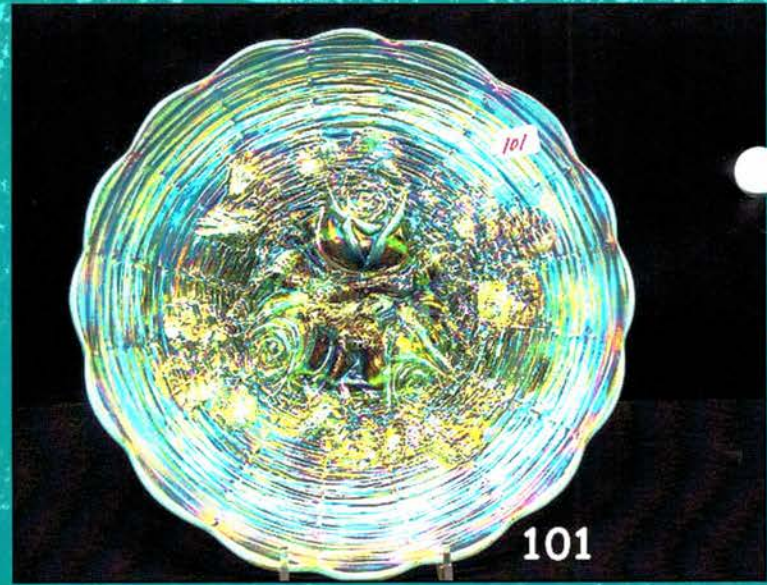
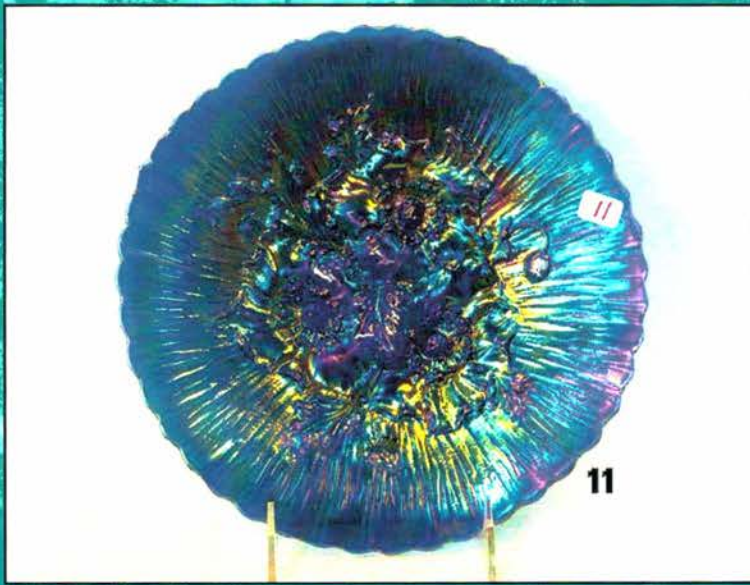
*Seventh Annual Sunshine State
Carnival Glass Association Convention
Deerfield Beach, Florida
Saturday, January 29th, 2005 – 9:30 a.m*



*Featuring the Carnival Glass Collection of
Bernie and Nancy May - Westminster, Maryland*

*Jim Wroda Auction Services
Greenville, Ohio*

Vol. 1, Series 2005



Directions to the auction location at Howard Johnson on Deerfield Beach are listed below:

From I-95 South to Exit #42B or I-95 North Exit #42A (Hillsboro Blvd., East) Take Hillsboro Blvd. East for 2.7 miles over Intercoastal Waterway to Route A1A. Turn left (north) on Route A1A and go around first bend to right. Howard Johnson Beach Resort will be in front of you. **Do not take bend to left, instead go straight toward beach and to right around hotel to main entrance on east (beach) side.**

From Florida Turnpike: Exit Turnpike at Exit 75 Glades Road (Hwy 808) and go east on Glades Road 3.5 miles to I-95 South. Take I-95 South 3.3 miles to Exit #42B - Hillsboro Blvd. And follow directions above

Host Hotel:

Howard Johnson on Deerfield Beach.

2096 N. E. Second Street
Deerfield Beach FL 33441

20 miles north of Ft. Lauderdale

Telephone 1-800-426-0084 or 954-428-2850

Other local hotel information:

- LaQuinta Inn-Hillsboro Blvd. 954-427-1004 \$95.00
- Embassy Suites Rt. A1A.-954-426-0478-\$299.99(sm, pets ok)
1 mile(apx.) from Howard Johnsons
- Ramada Inn-Hillsboro Blvd.-954-427-2200-\$85.00 (sm pets ok)
3 miles from Howard Johnsons
- Comfort Inn-Rt. A1A-954-428-0650 \$109.95-(no pets) 3 min. from Howard Johnsons

RATES MAY VARY A LITTLE



SSCGA Carnival Glass Convention Auction

(This is a public auction. You do not need to be a member of SSCGA to participate in the auction. However, if you would like to join SSCGA please use application inside brochure.)

Saturday, January 29th, 2005 at 9:30 a.m.

Preview Friday, January 28th, 2005 at 7:00-9:30 p.m.

Howard Johnson on Deerfield Beach

2096 N. E. Second Street, Deerfield Beach, FL 33441

(This is within 15 to 20 minutes of the Ft. Lauderdale Airport)

Telephone: 800-426-0084 or 954-428-2850

On Saturday, January 29th 2005 at 9:30a.m., Jim Wroda Auction Services of Greenville Ohio, will be auctioning the absolutely beautiful collection of Bernie and Nancy May at the SSCGA Convention. Bernie and Nancy have been collecting for years and have decided to sell at this time. They are not getting out of Carnival just building a new collection! When you see the glass, I think you will be very happy that you have a chance to bid on glass that looks like this. What an awesome collection to start off the New Year! Make your reservations NOW! The Howard Johnson is the host hotel for the convention. *However, we do have a list of other local hotels available. See you in Florida!!!!*

*****IMPORTANT*****

*******Mail, E-mail, Phone, and Absentee Bids Policy:*******

1. Phone inquiries on items of interest are welcome! 937-548-2640 or 937-447-8909 evening.
2. Bidders take full responsibility to honor any and all bids that are executed in your behalf.
3. All items to be paid for within 7 days of notification unless other arrangements are made prior to auction. Successful absentee bidders must also pay estimated shipping costs.
4. All items bid competitively against the audience. **We do not start with your bid.**
5. Items will be bid on in **perfect condition** with average to above average iridescence unless otherwise stated or noted on your order of sale list or absentee bid sheet. **We will describe each item as accurately as possible!! (see listing)** **Bids will not be carried out if a damage is found during auction.** If manufacture problems bother you such as air bubbles, pulled points, soda ash, tool marks, or any other manufacturing flaw, please be specific in your mail bids or email bids. *If there is a manufacture flaw on an item that we feel is truly distracting, we have noted that in the listing already. Auction Company has the right NOT to execute an absentee bid for any reason.*
6. All bids can be called in to: (937) 548-2640, faxed to 937-548-3492, or sent to 5239 St. Rt. 49 South, Greenville, OH 45331. You can also e-mail bids directly from our website and ask questions (Please Ask!)
7. **All mail, faxed, write-in, and email bids due by Wednesday, January 26th, 2005 – 5:00 p.m.**
8. **Anyone wishing to live phone bid, requests due by Monday, January 24th, 2005 – 5:00 p.m.**
9. If someone in the audience is bidding for you they must pay for the item(s) before leaving.

NOTICE: Laurie will get your items to you as fast as she can but, PLEASE allow 2 to 3 weeks for your items to arrive as we may be staying in Florida for a week or so. Thanks!

******To view more pictures on the web: www.jimwrodaauction.com ******

Terms and Conditions of Auction: Cash, Travelers checks, business or personal checks with proper I.D. We now have Visa and MC and Discover with a 3% clerk fee. All items being sold *AS IS WHERE IS* with *NO MINIMUM* and *NO RESERVE!* Everything sells to highest bidder.

******Please use the preview times WISELY! Look over your items of interest.******

Jim Wroda Auction Services

Jim Wroda and Mike Baker CAI – Auctioneers

5239 St. Rt. 49 South, Greenville, OH 45331

Daytime: 937-548-2640

Evening 937-447-8909

Email: jwrodamidwest@earthlink.net or lwrodamidwest@earthlink.net

Licensed by the State of Florida

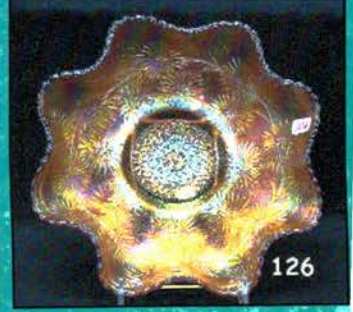
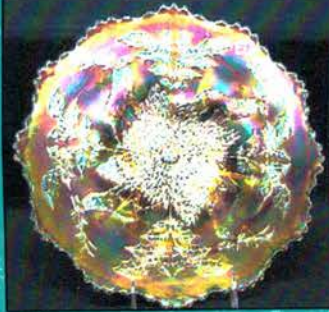
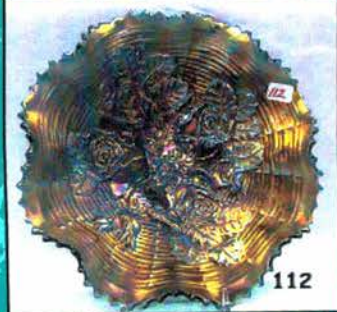
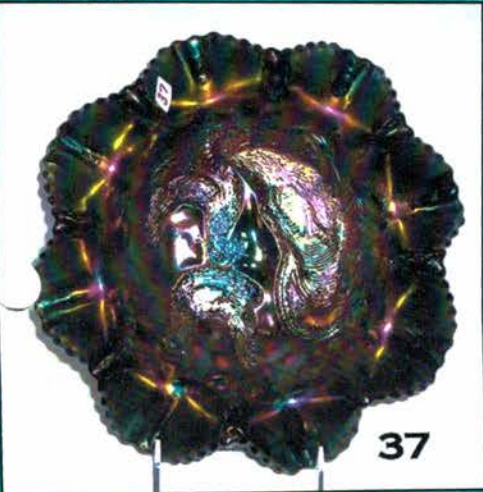
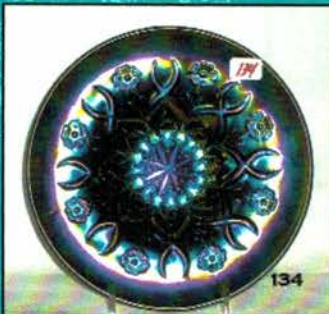
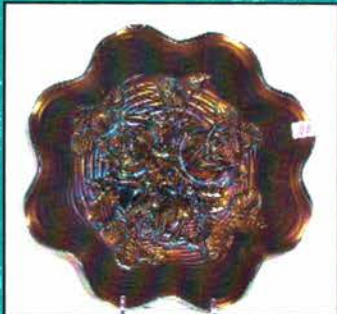
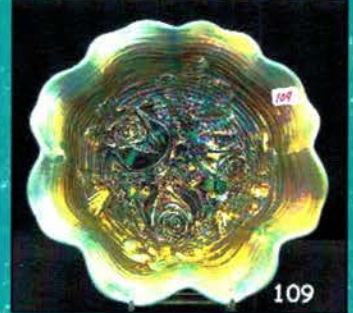
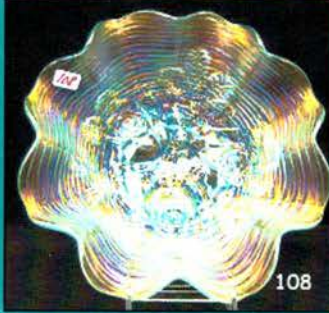
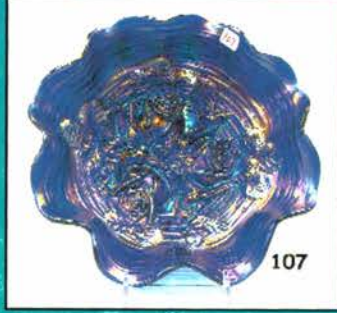
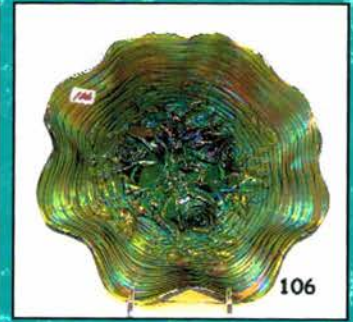
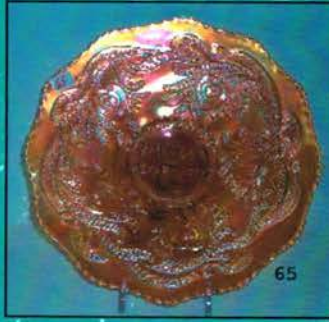
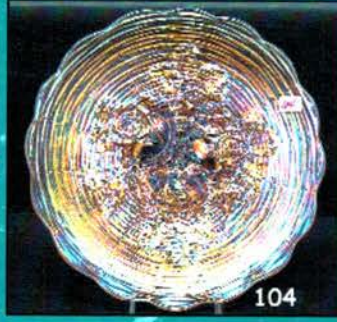
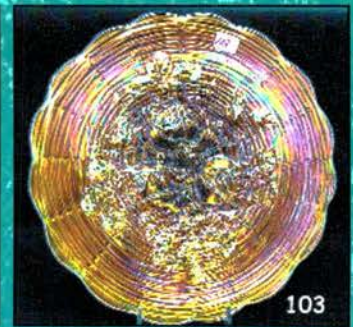
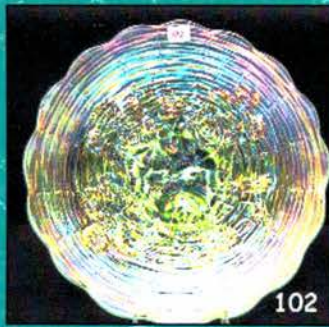
Jim Wroda license #AU3132 – Mike Baker license #AU3133

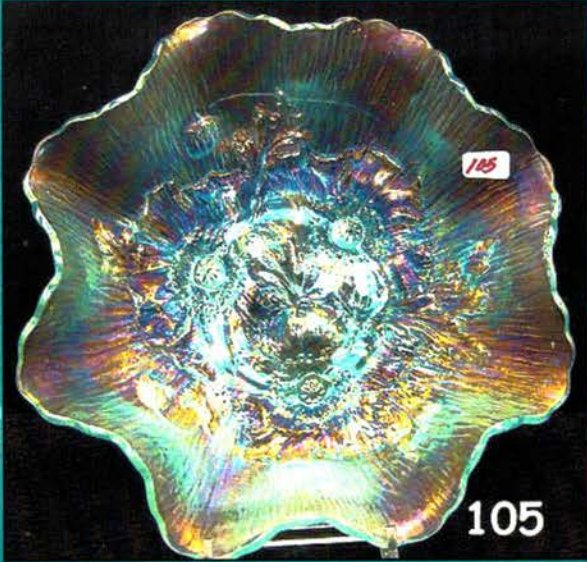


- 235 1. N-wood IB Peacock @ Fountain Tumbler.
- 30,20 2. N-wood pur. & Mari. Raspberry tumblers. Choice
- 55 3. N-wood vaseline G&C tumbler. Scarce. Not CG
- 375 4. N-wood purple G & C 7 pc. water set. Nice irid.
- 300 5. Fenton 7" purple Persian Medallion flat plate. Fantastic multicolor irid. Very scarce.
- 250 6. Fenton 7" dark mari. Horse Head Medallion plate. Scarce.
- 400 7. Fenton 7" purple Pine Cone 12-sided plate. Scarce! Great color!
- 300 8. Dugan 8" elec. purple Dogwood tri-corner CRE footed bowl. Super!
- 775 9. Fenton 8 1/2" vaseline opal Dragon & Lotus 8 ruffle bowl. Killer blue irid. Scarce.
- 7000 10. N-WOOD 9" ELEC. GREEN POPPY SHOW PLATE. KILLER BLUE IRID ON A VERY RARE PLATE! WOW!!!!
- 3900 11. N-WOOD 9" ELEC. BLUE POPPY SHOW PLATE. JUST ABSOLUTELY STUNNING. WHAT A WONDERFUL EXAMPLE!
- 1600 12. N-WOOD 9" IB POPPY SHOW PLATE. ANOHTER RARE BEAUTY!
- 700 13. N-wood 9" pastel marigold Poppy Show plate. Nice dark irid. Very Scarce
- 450 14. N-wood 9" white Poppy Show plate. Great multi-color irid.
- 750 15. N-WOOD 9" BLUE PEACOCKS STIPPLED PLATE. SUPER MULTI-COLOR IRID ON A RARE PLATE.
- 800 16. N-WOOD 9" GREEN PEACOCKS PLATE. VERY SCARCE AND PRETTY! Plain back.
- 625 17. N-wood 9" purple Peacocks plate. Great lookin' plate! Killer!!!!
- 900 18. N-WOOD 9" ELEC BLUE PEACOCKS PLATE. WONDERFUL ELEC HILIGHTS THROUGHOUT! SCARCE
- 550 19. N-wood 9" amy. Peacocks plate. Outstanding irid! Beautiful plate. 1 of Nancy's favorites!
- 850 20. N-wood 9" IG Peacocks plate. Super irid!
- 650 21. N-WOOD 9" MARIGOLD PEACOCKS STIPPLED PLATE. VERY SCARCE PLATE W/REAL NICE IRID!
- 400 22. N-wood 9" white Peacocks plate. Nice frosty irid.
- 1050 23. N-WOOD IB GRAPE & CABLE HATPIN HOLDER. SUPER FROSTY IRID ON A RARE PIECE OF GLASS! Does have flat chip on foot.
- 2200x2 24. N-WOOD IB GRAPE & CABLE COLOGNE BOTTLES (2). VERY SCARCE, BOTH ARE A MATCH. SELLING CHOICE.
- 425 25. N-wood IB Grape & Cable dresser tray. NICE!
- 150 26. N-wood IB Grape & Cable pin tray. Scarce!
- 130 27. N-wood IB Grape & Cable powder jar bottom. Bernie wants to know..... who has the top!!
- 900 28. Fenton 9" mari. Concord plate. Nice detail. Very scarce.
- 150 29. N-wood 9" green G & C plate w/BW back.
- 600 30. N-wood 9" green Good Luck plate w/BW back. Very scarce and nice.
- 475 31. N-wood 9" electric purple Good Luck PCE bowl. Killer!
- 575 32. N-wood 6" green large Tornado vase. Very scarce.
- 450 33. N-wood 6" purple small Tornado vase. Very nice electric highlights.
- 1300 34. N-wood purple/electric purple Peacock at Fountain punch set w/8 cups. Very scarce.
- 750 35. N-wood mari. Peacock at Fountain punch set w/6 cups. Dark color and very scarce.
- 1900 36. DUGAN 10" PEACH OPAL GARDEN PATH CHOP PLATE W/SODA GOLD EXT. EXTREMELY RARE CHOP PLATE W/VERY NICE COLOR AND DETAIL. OPAL ON EDGE. 1 OF 3 KNOWN! HERE'S YOUR CHANCE!
- 6000 37. DUGAN 10" PURPLE FARMYARD 8-RUFFLE BOWL. BLASTING WITH MULTICOLOR IRID. ONE OF THE BEST!
- 2100 38. DUGAN 10" ELECTRIC PURPLE BUTTERFLY AND TULIP SQUARE RUFFLED BOWL. AN ABSOLUTE BEAUTY W/COLOR ALL THE WAY TO THE EDGE. VERY RARE.
- 200 39. Dugan 10" white Garden Path 6-ruffle bowl w/Soda Gold ext. Super frosty irid. Scarce.
- 275 40. N-wood 6" purple Fern Brand Chocolates hand grip plate. Scarce and desirable Adv. Item.
- 85 41. N-wood 6" purple G & C hand grip plate.
- 40 42. N-wood 6" purple G & C 2-sides up plate.
- 200 43. N-wood purple Butterfly bon bon w/Threaded back. Very Scarce. No harm pealing on color base.
- 250 44. Fenton 5" red JIP Open Edge hat. Scarce.
- 95 45. Fenton 5" aqua JIP Open Edge hat. Scarce.
- 375 46. Fenton 6" IB Open Edge 2-sides up hat. Scarce.
- 100 47. Fenton 6" Vaseline Open Edge 2-sides up hat. Scarce.
- 50 48. Fenton 5" Vaseline Open Edge ruffled hat. Has bruise on webbing. Scarce.
- 900 49. Fenton 18" blue Rustic funeral vase. Super even color throughout. Scarce.
- 1300 50. Fenton 18" green Rustic funeral vase. Beautiful color on a rare Funeral vase.
- 700 51. Fenton 19" mari. Rustic funeral vase. Nice dark color all the way to the bottom.
- 250 52. N-wood 13" purple Tree Trunk mid-size vase. Scarce.
- 175 53. N-wood 14" mari. Tree Trunk mid-size vase
- 8500x2 54. (2) N-wood 10" green Tree Trunk vases. Both nice, selling choice.

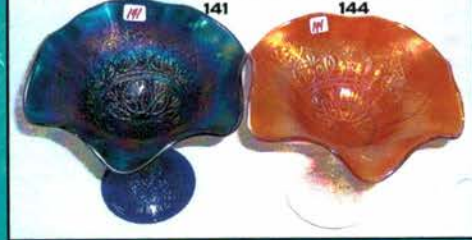
- 5000 55. N-WOOD FROSTY WHITE ACORN & BURRS PUNCH SET W/6 CUPS. EXTREMELY RARE. DARK FROSTY MULTICOLOR IRID. ON THE ENTIRE SET! JUST BEAUTIFUL.
- 3000 56. N-WOOD GREEN ACORN BURR PUNCH SET W/8 CUPS. VERY SCARCE AND NICE. Just not many around anymore.
- 175 57. N-wood 7" green Wild Strawberry handgrip plate. Very scarce.
- 205 58. N-wood 7" electric purple Wild Strawberry handgrip plate. Very scarce.
- 200 59. N-wood 7" pumpkin mari. Wild Strawberry handgrip plate. Scarce.
- 1000 60. N-wood purple G & C candle lamp. Scarce.
- 175 61. Imperial mari. Zipper Loop finger lamp. Very scarce. Has open bubble on handle.
- 1200 62. FENTON 9" PURPLE BIRMINGHAM AGE HERALD 1911 PLATE. VERY SCARCE W/A VERY NICE PRESSING.
- 1600 63. FENTON 9" BLASTING ELECTRIC BLUE PEACOCK AT URN PLATE. YOU WON'T FIND ANOTHER ONE ANY BETTER THAN THIS ONE! JUST INCREDIBLE!!!
- 800 64. Fenton 9" dark mari. Coral plate. Super color throughout. Very scarce.
- 900 65. Fenton 9" dark mari. Heart & Vine Spector's Dept. Store plate. Very scarce & nice!!!
- 325 66. Fenton 9" frosty white Peacock at Urn plate. Scarce.
- 275 67. Fenton 9" mari. Peacock & Grape plate. Very hard to find.
- 550 68. Fenton 9" mari. Leaf Chain plate. Super color!
- 650 69. Fenton 9" green Captive Rose plate. Very scarce!
- 175 70. Fenton 9" blue Persian Medallion plate. Just a tad silvery in spots. Still very scarce.
- 400 71. N-wood purple Grape Arbor tankard. Has nice multicolor irid. Scarce.
- 850 72. N-wood white 9 pc. Grape Arbor water set. Beautiful color. Very scarce.
- 1600 73. N-wood IB 7 pc. Grape Arbor water set w/super multicolor irid. Extremely scarce.
- 850 74. N-wood mari. 7 pc. Grape Arbor water set. Very nice dark color all the way to the bottom.
- 150 75. N-wood mari. Harvest Poppy stemmed compote. Scarce.
- 225 76. N-wood green Harvest Poppy stemmed compote. Very hard to find color.
- 125 77. N-wood mari. Blossom Time stemmed compote.
- 300 78. Imperial 6" electric purple Grape plate. Super color.
- 65 79. Imperial 6" green Grape plate. Scarce color.
- 30 80. Imperial 6" mari. Grape plate. Real nice color.
- 475 81. Imperial elec. purple 7 pc. Diamond Lace water set. Beautiful color!
- 350 82. Imperial elect. Purple Grape 7 pc. wine set. Great elec irid! Scarce.
- 105 83. Imperial 6" smoke Morning Glory vase w/4 1/2" opening. Super!
- 30 84. Imperial 5" mari. Morning Glory vase w/4 1/2" opening.
- 25 85. Imperial 5" mari. Morning Glory vase.
- 25 86. Imperial 6" mari. Morning Glory vase.
- 675 87. Imperial 11" electric purple Freefold vase. Beautiful shape to this vase!
- 275 88. Imperial 14" mari. Ripple funeral vase (4 3/4" base w/8 1/2" opening). Very nice.
- 200 89. Imperial 9" amber Beaded Bulls Eye vase.
- 25 90. Imperial 10 1/2" mari. Beaded Bulls Eye vase.
- 100 91. Imperial 12" helios green Ripple vase with spout. Cool lookin' vase!
- 40 92. Imperial elect. Purple Flute toothpick.
- 1500 93. N-WOOD GREEN DANDELION TANKARD & 1 TUMBLER. EXTREMELY RARE AND BEAUTIFUL. handle has chip underneath.
- 550 94. N-wood mari. 7 pc. Dandelion water set. scarce.
- 2500 95. N-WOOD SCREAMING ELEC. BLUE GRAPE & CABLE LOW FRUIT BOWL. ABSOLUTELY BEAUTIFUL!!!
- 230 96. N-wood IB G&C low fruit bowl. Great frosty irid. 1 flute ground off
- 1000 97. N-WOOD IG G & C LOW FRUIT BOWL. VERY RARE.
- 325 98. N-wood green G & C low fruit bowl. Super blue irid.
- 125 99. N-wood mari. G & C low fruit bowl. Nice color.
- 3100 100. DUGAN SUPER ELEC. PURPLE MANY FRUITS PUNCH SET W/12 CUPS. ELECTRIC INSIDE AND OUT INCLUDING THE CUPS. JUST A FANTASTIC SET.
- 14500 101. N-WOOD 9" ICE GREEN OPAL ROSE SHOW PLATE. EXTREMELY RARE PLATE WITH OFF THE CHARTS BLUE IRID!
- 2500 102. N-wood 9" IG Rose Show plate. Another beautiful plate.
- 1600 103. N-WOOD 9" DARK DARK PUMPKIN MARI. ROSE SHOW PLATE. VERY RARE AND NO DOUBT IT'S PUMPKIN.
- 1500 104. N-wood 9" pastel mari. Rose Show plate. Super bright blue irid. Scarce.
- 2000 105. N-WOOD 8 1/2" SATIN FROSTY ICE BLUE POPPY SHOW BOWL. VERY RARE AND EXTREMELY BEAUTIFUL!
- 3100 106. N-WOOD 8 1/2" GREEN/EMERALD GREEN ROSE SHOW RUFFLED BOWL. A BEAUTIFUL RARE BOWL! Killer!!
- 850 107. N-WOOD 8 1/2" SUPER ELECT. BLUE ROSE SHOW RUFFLED BOWL. ANOTHER BEAUTIFUL BOWL!
- 375 108. N-wood 8 1/2" IB Rose Show ruffled bowl. Beautiful frosty irid. Very scarce.
- 650 109. N-wood 8 1/2" AO Rose Show ruffled bowl. Lots of opal. Has tiny no harm open bubble on base.

- 550 110. N-wood 8 1/2" purple Rose Show ruffled bowl. Beautiful multicolor irid. Scarce.
- 275 111. N-wood 8 1/2" frosty white Rose Show ruffled bowl. Scarce. Way prettier than average!
- 850 112. N-WOOD 8 1/2" **RENNINGER BLUE ROSE SHOW VT. RUFFLED BOWL. NICE!**
- 500 113. N-wood 10" IB Peacock at Fountain master berry bowl. Very scarce.
- 400 114. N-wood 10" green Peacock at Fountain master berry bowl. Rare!
- 650 115. N-WOOD ELEC. BLUE PEACOCK AT FOUNTAIN RUFFLED FRUIT BOWL. VERY RARE!
- 275 116. N-wood mari. Peacock at Fountain ruffled fruit bowl. Scarce.
- 225 117. N-WOOD ELEC. PURPLE PEACOCK AT FOUNTAIN RUFFLED FRUIT BOWL. VERY SCARCE.
- 900 118. N-WOOD IB PEACOCK AT FOUNTAIN STEMMED COMPOTE. RARE.
- 800 119. N-wood elec. blue Peacock at Fountain stemmed compote. Extremely hard to find.
- 125 120. N-wood dark mari. Peacock at Fountain stemmed compote. Nice dark irid.!
- 250 121. N-wood white Peacock at Fountain stemmed compote.
- 950 122. N-wood elec. blue Peacock at Fountain 7 pc water set. Not many around that look like this!
- 325 123. N-wood mari. Peacock at Fountain water 7 pc. set. Nice multicolor irid.
- 225 124. N-wood IB Peacock at the Fountain water pitcher. Has 2 points ground off. Still a very pretty pitcher.
- 25 125. Fenton 11" mari. Stag & Holly footed chop plate. Scarce
- 400 126. FENTON 9" MARI. LITTLE DAISY'S 8-RUFFLE BOWL. VERY RARE W/GREAT PRESSING AND DETAIL.
- 300 127. Fenton 8 1/2" ice green opal or vaseline opal (you make the call) Dragon & Lotus spatula footed bowl. Chip on one foot. Very scarce.
- 225 128. Fenton 8 1/2" mari. Concord ruffled bowl. Nice!
- 400 129. Fenton 9" blue Orange Tree plate. Scarce
- 250 130. Fenton 9" frosty white Orange Tree plate w/TT center.
- 650 131. U.S. Glass honey amber Cosmos & Cane round nut bowl. Looks like a miniature punch bowl. Very nice!
- 900 132. U.S. GLASS PURPLE COSMOS & CANE 6" RUFFLED PEDESTALED BOWL. VERY RARE COLOR! NICE IRID.
- 250 133. Dugan/Northwood elec. purple Argonaut Shell gravy boat. Super color!
- 1000 134. DUGAN 6" KILLER ELEC. PURPLE WISHBONE & SPADES FLAT PLATE. EXCEPTIONALLY FINE EXAMPLE.
- 925 135. Fenton 6" AO Blackberry Spray JIP CRE hat. Rare!
- 425 136. N-wood AO Dandelion mug. Absolutely beautiful color. A bit out of round.
- 800 137. N-wood green round Bushel Basket. Very nice irid. Scarce.
- 75 138. Fenton blue Orange Tree large shaving mug.
- 600 139. Camb. Green Inverted Strawberry spittoon. Nice radium irid. Very scarce. Near Cut.
- 400 140. N-wood pastel AO Heart & Flowers stemmed compote. Super irid. Very scarce.
- 150 141. N-wood elec. blue Heart & Flowers stemmed compote. Beautiful electric irid.
- 500 142. N-wood IB Heart & Flowers stemmed compote. Beautiful multicolor frosty irid.
- 800 143. N-wood IG Heart & Flowers stemmed compote. Very scarce. Nice!
- 275 144. N-wood pumpkin mari. Heart & Flowers stemmed compote. Have not seen one this dark.
- 105 145. N-wood white Heart & Flowers stemmed compote. Frosty!
- 1100 146. IMPERIAL 10" LIGHT OLIVE GREEN HOMESTEAD CHOP PLATE. REALLY COOL BASE COLOR W/BEAUTIFUL BLUE AND YELLOW IRID. MAKING FOR A WONDERFUL EXAMPLE.
- 500 147. Imperial 10" mari. Homestead chop plate. Nice dark color w/blue & yellow irid.
- 1000 148. IMPERIAL 9" ELEC. PURPLE GRAPE FLAT PLATE. VERY RARE AND AN ABSOLUTE BEAUTY.
- 115 149. Imperial 8" purple Shell & Sand deep ruffled bowl. Very nice!
- 300 150. Imperial 4" smoke Roccoco vase. Scarce & nice
- 2100 151. N-WOOD DARK MARI. G&C MASTER PUNCH SET W/12 CUPS. BEAUTIFUL DARK EXAMPLE. RARE!
- 1900 152. N-WOOD KILLER ELEC. PURPLE G & C MASTER PUNCH SET W/12 CUPS. BOWL & BASE ARE JUST BEAUTIFUL. RARE
- 425 153. N-wood elec. purple G & C table size punch set w/6 cups. Very nice example.
- 1500 154. N-WOOD MARI. STIPPLED G & C TABLE SIZE PUNCH SET W/8 CUPS. BEAUTIFUL YELLOW AND BLUE IRID. ON A VERY RARE SET!
- 600 155. N-wood mari. G & C table size punch set w/4 cups. Very scarce. Has dark hot pink irid. Really nice!
- 375 156. N-wood mari. G & C large footed orange bowl. Very scarce.
- 325 157. N-wood purple/elec. purple G & C large foot orange bowl. Very scarce w/great irid.
- 450 158. N-WOOD IB G & C BANANA BOAT. NICE DARK COLOR. VERY RARE!
- 325 159. N-wood elec. purple G & C banana boat. Super irid. Scarce!
- 135 160. N-wood dark mari. G & C banana boat. Scarce.
- 300 161. N-wood green G & C banana boat. Very scarce.





105



113



116



158



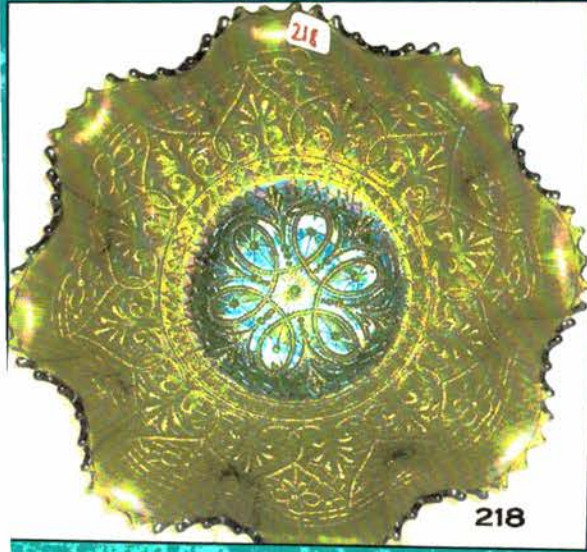
114



117



159



218



131

132



160



137

135

136



161



157



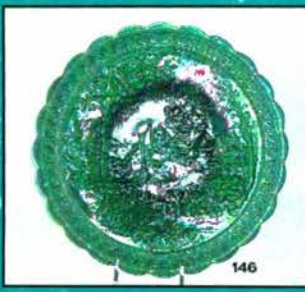
259



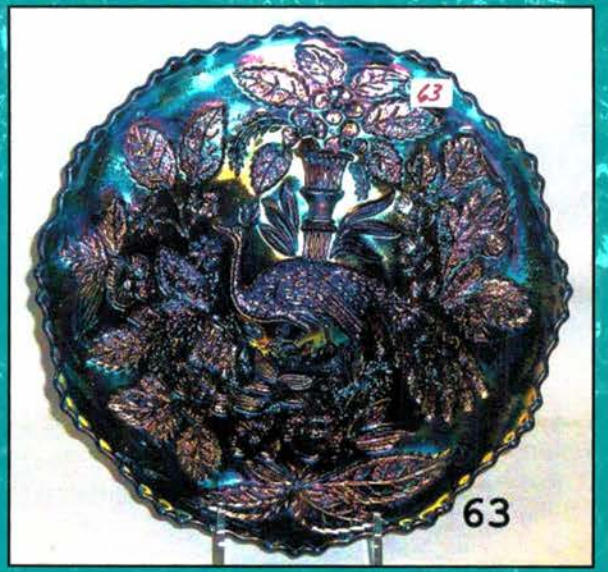
118



120

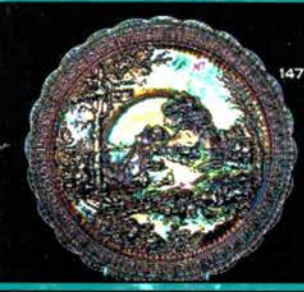


146

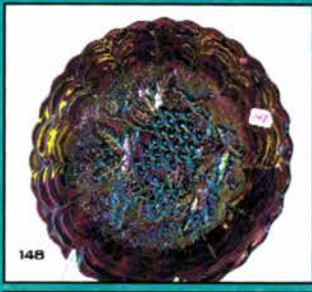


63

63



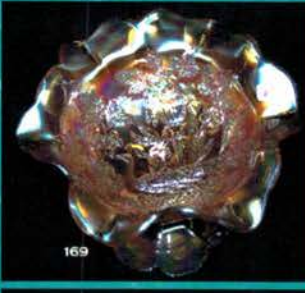
147



148



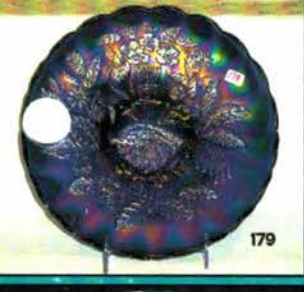
163



169



162



179



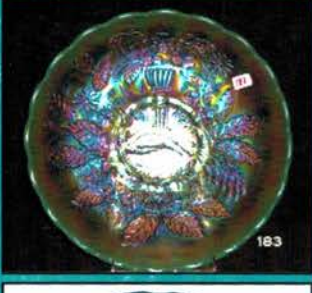
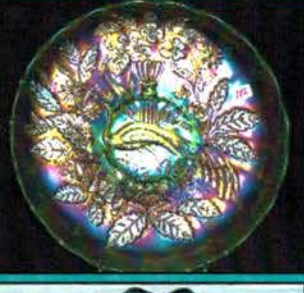
180



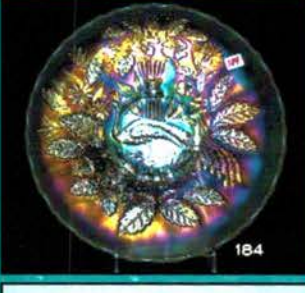
181



152



183



184



185



190



194

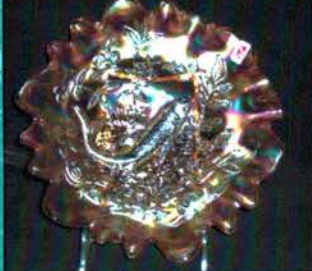


280

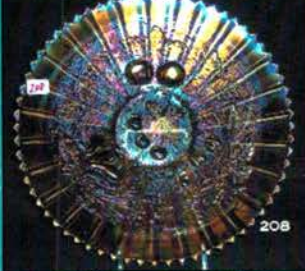
280



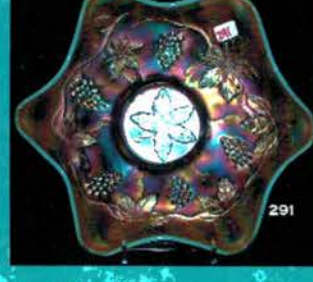
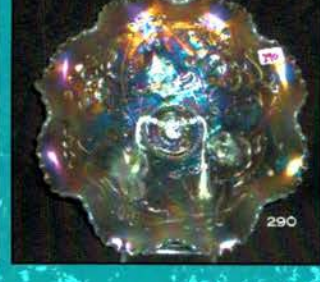
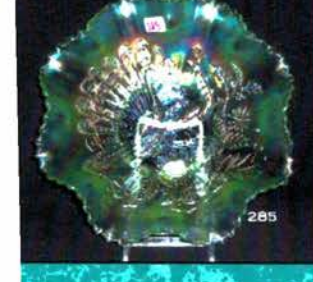
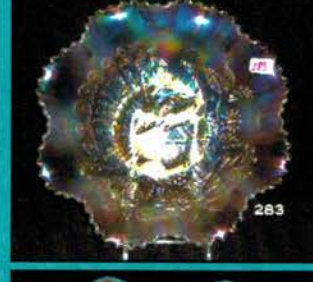
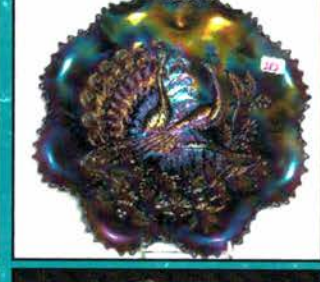
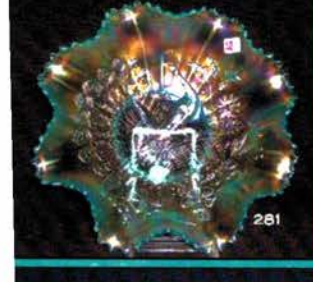
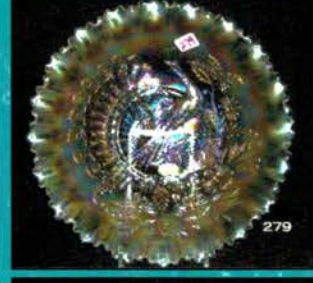
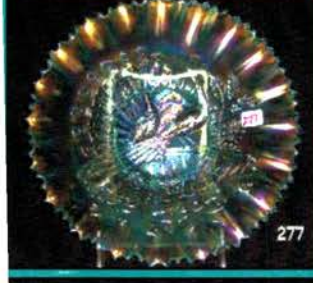
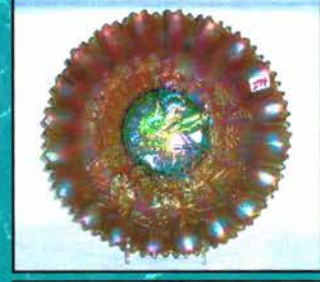
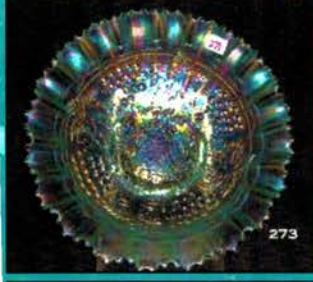
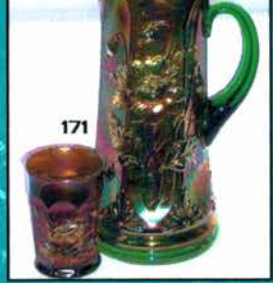
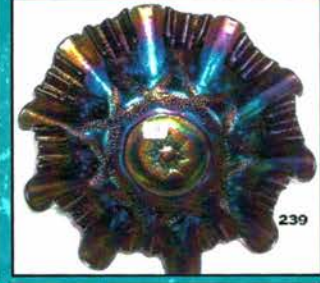
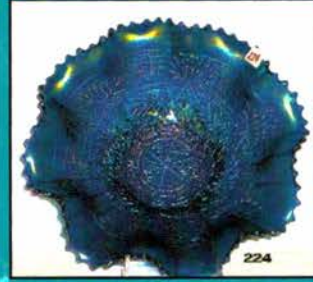
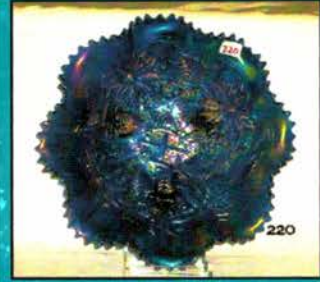
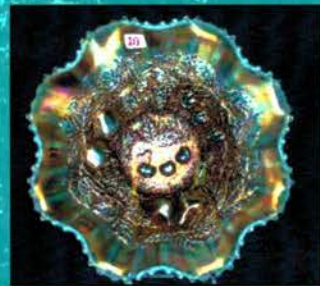
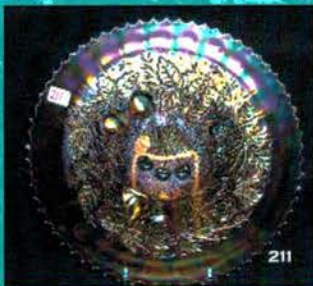
198



199



208



- 400 162. N-WOOD WHITE G & C BANANA BOAT. NICE FROSTY IRID. RARE!
- 1700 163. M-BURG 10" BLUE MANY STARS BERNHEIMER BROS. RUFFLED BOWL. VERY RARE. NICE SATINY IRID.
- 275 164. M-burg 10" radium purple Peacock at Urn ruffled bowl. No bee, no beads.
- 210 165. M-burg 10" green Peacock at Urn ruffled bowl. Bee, No beads.
- 350 166. M-burg 10" radium green Peacock at Urn 3/1 edge bowl. No bee, No beads. Scarce.
- 350 167. M-burg 10" radium purple Nesting Swans ruffled bowl. Very nice!
- 400 168. M-burg 10" radium purple Fleur-de-lys CRE ruffled bowl.
- 1050 169. M-BURG MARI. PEACOCK AT URN GIANT COMPOTE. VERY RARE!
- 250 170. M-burg 10" radium green Hobnail Swirl vase. Very scarce.
- 900 171. N-WOOD GREEN ORIENTAL POPPY TANKARD & 2 TUMBLERS. NICE COLOR! VERY RARE!
- 1150 172. N-WOOD FROSTY WHITE ORIENTAL POPPY 7 PC. WATER SET. NICE PASTEL IRID. SCARCE.
- 750 173. N-wood purple Oriental Poppy 7 pc. water set. Good lookin' matched set. Scarce!
- 475 174. N-wood mari. Oriental Poppy 7 pc. water set. Nice irid. Scarce!
- 225 175. N-wood blue Drapery candy dish.
- 65 176. N-wood elec. purple Fruits & Flower bon bon. Super color!
- 300 177. N-wood elec. blue Poppy pickle dish. Super!
- 425 178. N-wood elec. purple Drapery rose bowl. Great color!
- 1200 179. N-WOOD 10" ELEC. BLUE PEACOCK AT URN MIC BOWL. SUPER IRID. RARE!
- 900 180. N-wood 10" beautiful elec. purple Peacock at Urn MIC bowl. Very hard to find with this type of color.
- 350 181. N-wood 10" mari. Peacock at Urn MIC bowl. Scarce.
- 900 182. N-wood 10" IG Peacock at Urn MIC bowl. Beautiful pastel irid.
- 900 183. N-wood 10" IB Peacock at Urn MIC bowl. Has great blue and yellow irid. Super!
- 450 184. N-wood 10" white Peacock at Urn MIC bowl. Nice frosty multicolor irid.
- 400 185. N-wood 10" purple Peacock at Urn ruffled bowl. Very scarce & pretty!
- 165 186. 2 N-wood 5" IG Peacock at Urn sauces. 2 x money
- 225 187. N-wood 5" IB Peacock at Urn sauce. Scarce.
- 5 188. N-wood 5" white Peacock at Urn sauce. Scarce.
- 125 x 2 189. 2 N-wood 5" super elec. blue Peacock at Urn sauces. Very hard to find. 2 x money
- 400 ~~75~~ 190. N-WOOD 5" GREEN PEACOCK AT URN SAUCE. VERY RARE COLOR!
- 95 191. N-wood 5" purple Peacock at Urn sauce. Nice electric highlights.
- 195 192. N-wood 5" mari. Peacock at Urn sauce. Beautiful blue irid.
- 75 193. N-wood 5" dark purple Peacock at Urn sauce.
- 350 194. M-burg 5" purple Isaac Benesch & Sons ruffled bowl. Very scarce.
- 475 195. M-burg 8 1/2" green Trout & Fly 3/1 edge bowl. Very nice color.
- 475 196. M-burg 8 1/2" mari. Big Fish 3/1 edge bowl. Very hard to find.
- 250 197. M-burg 8 1/2" radium green Peacock at Urn ruffled bowl. Bee w/beads. Scarce.
- 200 198. Imperial 10" smoke Hobstar Nu Cut vase. Nice color. Scarce. This looks to be an old one!
- 105 199. Dugan 13" PO Target vase
- 55 200. Fenton 15" mari. Rustic mid-size vase.
- 35 x 2 201. (2) Fenton mari. Fine Rib 17" vases. (2 x money)
- 145 202. N-wood 7" green Drapery squatty vase. Scarce.
- 125 203. N-wood 10" blue Tree Trunk vase.
- 75 204. N-wood 8" purple Tree Trunk squatty vase.
- 55 205. N-wood 9 1/2" green Tree Trunk vase.
- 45 206. Fenton 9 1/2" white rustic vase.
- 200 207. N-wood 9" purple Strawberry stippled plate. Very rare w/nice electric highlights.
- 5500 208. N-WOOD 9" HOREHOUND THREE FRUITS STIPPLED PLATE. VERY RARE AND BEAUTIFUL PASTEL PLATE. WOW!!
- 400 209. N-wood 9" lavender Three Fruits stippled plate. Very scarce.
- 450 210. N-wood 9" cobalt blue Three Fruits stippled plate. Scarce.
- 275 211. N-wood 9" mari. Three Fruits stippled plate.
- 1650 212. N-wood 8 1/2" aqua/teal Three Fruits stippled ruffled bowl. Fantastic pastel irid. On a very hard to find bowl. Does have chip on the back of the collar base.
- 750 213. N-wood 8 1/2" AO Three Fruits stippled ruffled bowl. Very scarce.
- 200 214. N-wood 9" purple Strawberry plate w/plain back. Super electric highlights.
- 225 215. N-wood 9" green Strawberry PCE bowl w/BW back.
- 200 216. N-wood 9" green G & C stippled plate. Scarce!
- 175 217. N-wood 8 1/2" lavender G & C PCE bowl w/plain back. Great color!!!
- 4000 218. N-WOOD 8 1/2" GREEN/EMERALD GREEN HEART & FLOWERS RUFFLED BOWL. VERY RARE AND BEAUTIFUL! KILLER!!!!
- 400 219. N-wood 8 1/2" IB Heart & Flower ruffled bowl. Scarce.

- 800 220. N-wood 8 1/2" elec. blue Poinsettia & Lattice footed ruffled bowl. **Killer!!!**
- 500 221. N-wood 8 1/2" pastel mari. Poinsettia & Lattice footed ruffled bowl. **Very nice!**
- 175 44 222. N-wood purple Peacock at Fountain table set. **Butter, cov. Sugar, spooner, creamer. Choice pieces.**
- 300 223. N-wood mari. Peacock at Fountain table set. **Butter, cov. Sugar, spooner, creamer. Choice pieces.**
- 700 224. N-wood 8 1/2" elec. blue Embroidered Mums ruffled bowl. **Outstanding electric irid.**
- 425 225. N-wood 8 1/2" IB Embroidered Mums ruffled bowl. **Nice pastel irid. Very scarce.**
- 100 226. N-wood green G & C breakfast creamer and sugar.
- 95 227. N-wood purple G & C breakfast creamer and sugar.
- 40 228. N-wood 5" blue Peacock at Fountain berry bowl.
- 50 229. N-wood 5" purple Peacock at Fountain berry bowl.
- 350 230. Imperial 9" elec. purple Scroll Embossed plate. **Super nice.**
- 300 231. U.S. Glass white Palm Beach 5" banana boat.
- 300 232. Wild Berry mari. Covered powder jar. **Very scarce. Souvenir Henderson Harbor NY.**
- 575 233. **FENTON BLUE BLUEBERRY WATER PITCHER. RARE W/GREAT ELECTRIC COLOR.**
- 850 234. Fenton blue Orange Tree Orchard 7 pc. water set. **Very scarce. Nice color and detail!**
- 150? 235. Dugan mari. Heavy Iris tankard.
- 650 236. Dugan cobalt blue Peacock at Fountain 7 pc. water set. **Very scarce!**
- 575 237. Dugan purple Daisy Web 2-sides up hat w/CRE. **Extremely scarce w/nice color.**
- 425 238. Dugan purple Fishnet epergne. **Scarce. Average color.**
- 500 239. Dugan 8 1/2" elec. purple Ski Star footed bowl w/CRE. **Beautiful color. WOW!**
- 325 240. Dugan 6" elec. purple Wishbone & Spades flat plate. **Beautiful multicolor irid. Very scarce.**
- 65 241. Dugan elec. purple Grape Delight nut bowl. **Scarce.**
- 75 242. Dugan elec. purple Holly gravy boat. **Very scarce.**
- 120 243. Dugan PO Fan gravy boat.
- 260 244. Dugan 9" white Fanciful plate. **Nice pastel irid.**
- 150 245. Dugan 9" white Apple Blossom Twigs plate. **Very scarce. Nice!**
- 60 246. Dugan 10" mari. Lined Lattice vase
- 125 247. Dugan 8" purple Lined Lattice vase
- 115 248. Dugan 10" blue Target vase. **Scarce color.**
- 135 249. Fenton 8 1/2" mari. Coral ruffled bowl. **Very scarce.**
- 360 250. Fenton green Orange Tree loving cup. **Scarce color.**
- 235 251. Fenton blue Orange Tree loving cup. **Nice.**
- 200 252. Fenton mari. Orange Tree loving cup.
- 75 253. Fenton 7" mari. Peacock & Dahlia ruffled bowl. **Nice.**
- 30 254. M-burg 6" mari. Blackberry Wreath ruffled sauce.
- 95 255. M-burg 6" green Cosmos low ICS bowl.
- 85 256. M-burg 6" green Blackberry Wreath 3/1 edge sauce.
- 260 257. N-wood AO Leaf & Beads rosebowl. **Very nice! Scarce.**
- 160 258. N-wood mari. Beaded Cable footed rosebowl. **Nice!**
- 200 259. N-wood purple Memphis punch set w/5 cups. **Has unusual round top not ruffled. Very scarce.**
- 800 260. N-wood mari. Memphis punch set w/6 cups. **Super bright pink & blue irid.**
- 75 261. N-wood elec. blue Singing birds mug.
- 45 262. N-wood mari. Singing Birds mug. **Great color!**
- 225 263. N-wood green G & C hat pin holder. **Nice multicolor irid. Rare! Tiny nip on toe.**
- 335 72 264. (2) N-wood green G & C cologne bottles. **Rare, selling choice.**
- 325 265. N-wood green G & C powder jar. **Very scarce.**
- 500 266. N-wood green G & C dresser tray. **Scarce.**
- 250 267. N-wood green G & C pin tray. **Very hard to find.**
- 225 268. Fenton 5" aqua Panther footed bowl. **Very scarce.**
- 725 269. **FENTON 5" RED PANTHER FOOTED BOWL VERY RARE.**
- 70 270. Fenton 6" green Pinecone round plate. **Scarce.**
- 800 271. N-wood purple Greek Key water pitcher. **An awfully scarce water pitcher. Nice irid.!!**
- 725 272. N-wood blue Peach 7 pc. water set. **Another hard to find water set. Very Scarce set!!**
- 850 273. N-WOOD 8 1/2" IB G & C STIPPLED PCE BOWL. **RARE! NICE PASTEL!**
- 850 274. N-WOOD 8 1/2" GREEN PEACOCKS PCE BOWL. **BEAUTIFUL BLUE IRID. RARE!**
- 900 275. N-WOOD 8 1/2" HOREHOUND PEACOCKS PCE BOWL. **VERY RARE COLOR FOR THIS! NICE!**
- 450 276. N-WOOD 8 1/2" ELEC. BLUE PEACOCKS PCE BOWL. **GORGEOUS!**
- 900 277. N-WOOD 8 1/2" IB PEACOCKS PCE BOWL. **NOT MANY AROUND. NICE.**
- 425 277 N-wood 8 1/2" amy. Peacocks PCE bowl. **Great elec. irid.**
- 185 278. N-wood 8 1/2" mari. Peacocks PCE bowl. **Very nice.**
- 425 279. N-wood 8 1/2" white Peacocks PCE bowl w/plain back. **Nice frosty multicolor irid.**
- 1500 280. N-WOOD 8 1/2" AO PEACOCKS RUFFLED BOWL. **BEAUTIFUL PASTEL IRID. RARE! A TOP EXAMPLE!**
- 625 281. N-WOOD 8 1/2" IB PEACOCKS RUFFLED BOWL. **VERY HARD TO FIND.**

- 375 282. N-wood 8 1/2" elec. purple Peacocks ruffled bowl. Scarce.
- 375 283. N-wood 8 1/2" frosty white Peacocks ruffled bowl. Great lookin' bowl!
- 400 284. N-wood 8 1/2" cobalt blue Peacocks ruffled bowl. Nice multicolor irid.
- 650 285. N-WOOD 8 1/2" IG PEACOCKS RUFFLED BOWL. VERY RARE BOWL W/GREAT COLOR.
- 275 286. N-wood 8 1/2" pumpkin mari. Peacocks ruffled bowl.
- 75 287. N-wood 8 1/2" green Peacocks ruffled bowl. Beautiful blue irid. Does have couple points missing.
- 1400 288. N-wood 8 1/2" green Wishbone footed bowl. Nice blue irid.
- 115 289. N-wood 8 1/2" purple Wishbone footed bowl. Nice!
- 375 290. N-wood 8 1/2" frosty white Wishbone footed bowl. Very scarce.
- 1700 291. FENTON 8 1/2" AO VINTAGE RUFFLED BOWL. VERY RARE COLOR. NOT MANY AROUND.
- 115 292. Dugan 8 1/2" amy. Pony 6-ruffle bowl. Tiny nick on color base. Very scarce.
- 225 293. N-wood elec. Purple Raspberry water pitcher.
- 450 294. N-wood green Raspberry 7 pc. water set. Very scarce.
- 750 295. Imperial 16" mari. Morning Glory funeral vase.
- 25 296. Imperial 10" mari. Ripple vase.
- 45 297. Westmoreland 10" amber Concave Flute vase. Scarce.
- 50 298. Fenton 10" blue April Showers vase.
- 50 299. Fenton 9" purple Fine Rib vase. Scarce color!
- 35 300. Fenton 7" blue Butterfly & Berry vase.
- 200 301. Imperial 9" elec. amber Open Rose flat plate. Beautiful.
- 225 302. Daisy Squares light green stemmed rosebowl.
- 75 303. Fenton blue miniature Blackberry flat plate. Very rare. Does have buff spot on base.
- 115 304. Dugan 6" purple Cherries CRE plate.
- 35 305. Dugan 6" PO Cherries CRE plate.
- 235-75 306. Dugan 7"elec. purple & peach opal Honeycomb CRE plates. Super! Choice!
- 160 307. N-wood 9 1/2" purple /elec. purple Wild Strawberry 6-ruffled bowl. Very nice.
- 350 308. Fenton 9" blue Captive Rose plate. Super color!
- 125 309. Fenton 8 1/2" blue Persian Medallion ICS bowl. Very hard to find.
- 225 310. M-burg 7" radium purple Holly Sprig CRE deep bowl. Beautiful blue irid.
- 285 311. Imperial 10" elec. purple Grape deep ruffled bowl. Killer elec. color.
- 225 312. N-wood 8 1/2" green G & C stippled ruffled bowl. Nice yellow irid. Very scarce.
- 75 313. Dugan 9" purple Cherries deep ruffled bowl w/JH ext. . Has nice elec. highlights throughout.
- 105 314. Dugan 8 1/2" radium purple Cherries footed ruffled bowl. Scarce.
- 150 315. Fenton 8 1/2" blue/elec. blue Peacock at Urn ICS bowl. Beautiful color.
- 400 316. FENTON RED PERSIAN MEDALLION 2-HANDLED BON BON. NICE SOLID DARK RED ALL THE WAY. SCARCE.
- 500 317. N-wood 9 1/2" light amy. Wishbone PCE bowl. Color really trying to be lavender. You make the call.
- 300 318. Dugan 9" blue Wind Flower flat plate. Scarce.
- 250 319. Fenton 10" blue Stag & Holly footed 8-ruffle bowl. Nice multicolor irid.
- 130x2 320. (2) N-wood purple G & C plates. One 7", One 9". Selling Choice. Both very nice.

THANKS FOR PARTICIPATING IN TODAY'S AUCTION! PLEASE WATCH OUR WEBSITE FOR FUTURE AUCTIONS.

Always accepting quality consignments & collections!

NOTES

Jim Wroda Auction Services
Greenville, Ohio

Write in bid sheet for January 29, 2005 Carnival Glass Auction
Please mail to: Jim Wroda Auctions c/o Midwest Auctioneers & Realty, Inc. 5239 St. Rt. 49S., Greenville, OH 45331
Or FAX to: 937-548-3492

Name: _____ Address: _____

City: _____ State: _____ Zip code: _____ Phone: _____

Lot Number	Description	Bid Amount

IF USING THIS FORM PLEASE MAIL BY JANUARY 21, 2005 TO INSURE DELIVERY!

**Sunshine State Carnival Glass Association
Membership Application**

New Member _____ Renewal _____

NAME _____
Birth Month _____ Day _____

NAME _____
Birth Month _____ Day _____
Anniversary Date _____

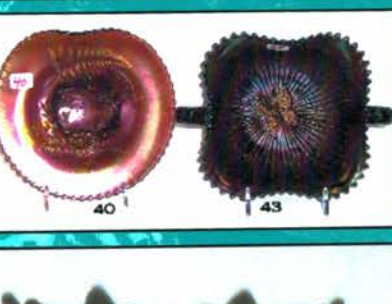
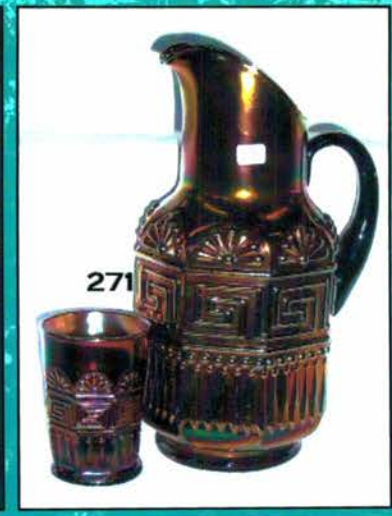
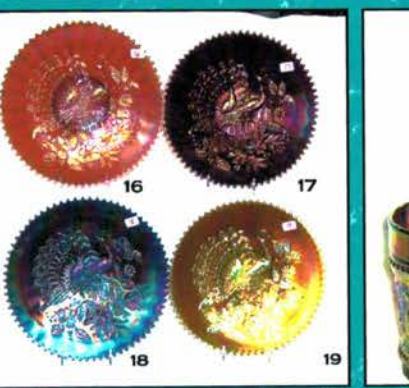
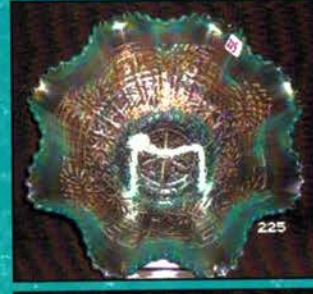
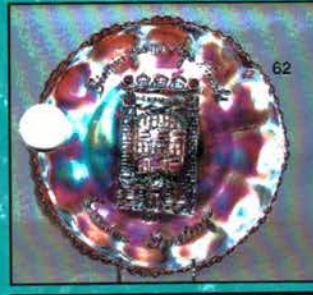
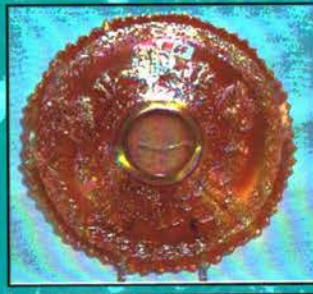
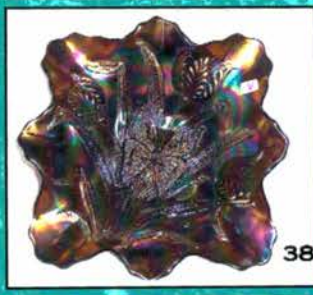
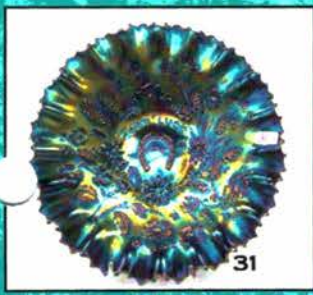
ADDRESS: _____

CITY: _____ STATE: _____ ZIP _____

PHONE: _____ EMAIL: _____

Referred By: _____

(Please make all checks payable to SSCGA (\$25.00 annually/family)
Send Dues to Jackie Poucher (Secretary)
9087 Baywood Park Dr., Seminole, Florida 33777

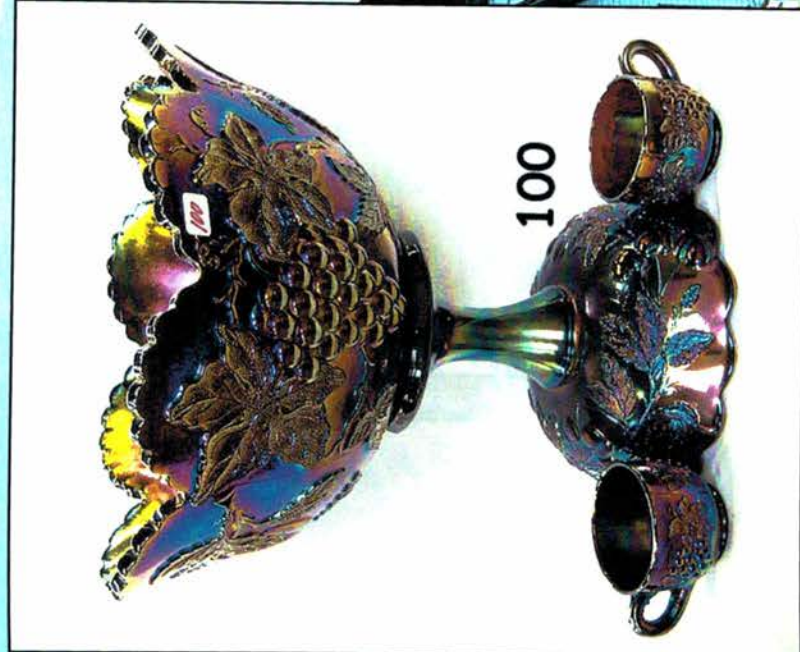


Jim Wroda Auction Services

C/O Midwest Auctioneers & Realty, Inc.
5239 St. Rt. 49 South
Greenville, OH 45331
www.jimwrodaauction.com

Presorted
First Class Mail
U.S. Postage Paid
Celina, OH
Permit No. 99

FIRST CLASS DELIVERY



**Seventh Annual Sunshine State
Carnival Glass Association Auction
Saturday, January 29th, 2005 - 9:30 a.m.**

*(This is a public auction, You do not need to be a member
of this club to participate in the auction)*

Returned For Better Address

005*001*****MIXED AADC 458
Lee Marklev
PO Box 306
502 N Broadway

