

AUCTION



82



30



81

*International Carnival Glass Club Convention
Saturday, July 17th, 2004 -- 9:30 A.M.*

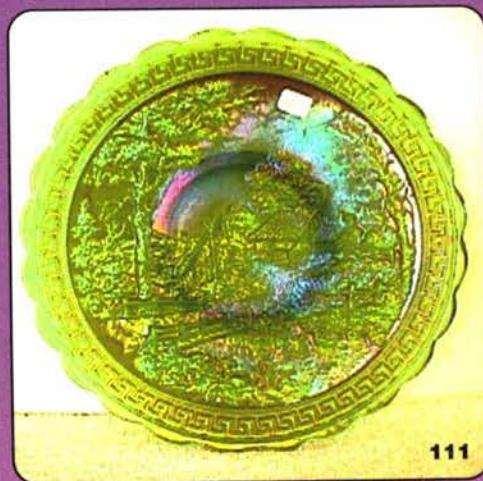
The Rottschaefers Collection



110



15



111

Crowne Plaza Hotel
11228 Lone Eagle Drive
Bridgeton, Missouri
Call (314)291-6700 for reservations

Jim and Jan Seeck **Seeck Auctions**
ICGA Convention Auction

644-424-1116

SATURDAY, JULY 17th, 2004 -- 9:30 A.M.

Crowne Plaza Hotel – Bridgeton, MO (St. Louis)

NO BUYERS PREMIUM

OPEN TO THE PUBLIC

The Pat and John Rottschaefer Collection

This year at the 2004 ICGA convention we are pleased to be selling the Pat and John Rottschaefer collection from California. They put together a super collection of glass that is outstanding in iridescence from the rarity to the more available pieces. This is a "Beautiful" collection of glass. Almost every piece in this sale could have been bolded in the listing. They favored outstanding Imperial pieces but have a little of everything including many rare Foreign pieces. No one should be disappointed with this auction!

Don't forget to check out our website for lots of pictures!

www.seeckauction.com

Also, please email us and we will put you on our email mailing list for auction notices.

Reservations can be made by calling the hotel directly at 314-291-6700. Ask for reservations and mention the "ICGA" Convention. If you have questions about the convention, contact President Brian Pitman at: 785-478-9004 or email: bpitman@woodsland.com..

Preview: Time to be determined later.

Terms: Cash or Check with proper I.D.

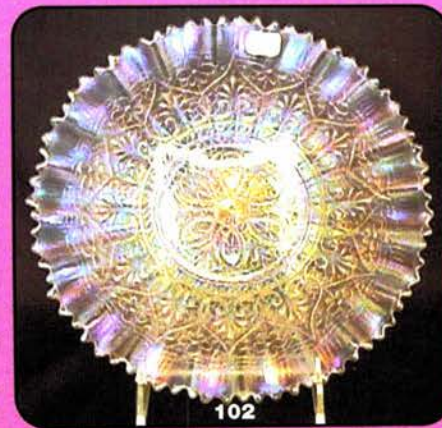
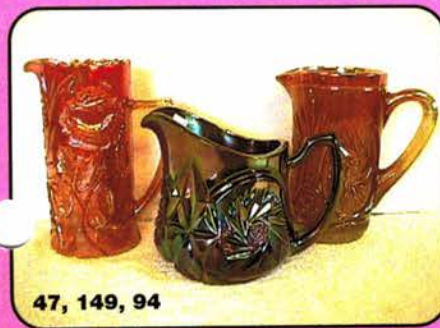
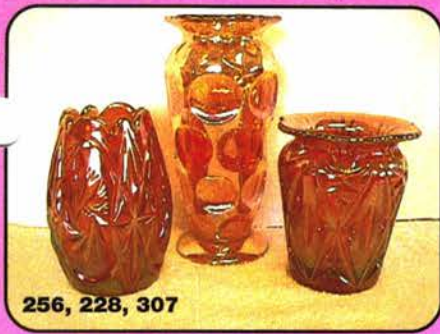
ABSENTEE BID POLICY

1. Write-in bids will be accepted by sending the numbers of the item(s) desired and the amount bid on each to:
Seeck Auctions, PO Box 377, Mason City, Iowa 50402.
2. If known by Auction Company, bids may be done over the telephone. (641)424-1116.
3. You may **email** your bids to us: **jimjan@seeckauction.com** Continue to include the numbers of the item(s) you would like to bid on and amount bid on each, please include your telephone number.
4. There is a \$5 handling charge for each successful bid. Shipping and insurance charges are additional.
5. Bidders will be notified by phone/email if their bid(s) are successful. This will be done 1 - 3 days after the auction.
6. Please have all bids in by **Tues., July 13th.(12noon)** All bids (by mail, phone or **email**) after this date may not be carried out.
7. Please place bids in the following increments: \$1 to \$300 - \$5 increments \$300 up - \$25 increments.
8. **If you do not receive an item that sold for less than your bid, assume we cancelled your bid because the piece of glass had below average color, manufacture problem, damage or was not listed correctly.**
9. Auction results are posted on our website within 5 days of the auction (depending on drive time home from the sale.) Also results are available in many of the club newsletters.

- | | | | |
|----------------------|---|--------------|---|
| <u>15</u> <u>X2</u> | 1. Acorn Burrs berry sauces (2) - marigold choice | <u>2100</u> | 10. Beaded Bullseye 10 1/2" vase - emerald green - super pretty, unbelievable irid, what a vase! |
| <u>80</u> | 2. Ribbon Tie IC shaped bowl - marigold | <u>185</u> | 11. Beaded Bullseye 10 1/2" vase - purple - fantastic! |
| <u>135</u> | 3. M'burg Blackberry Wreath IC shaped sauce - amethyst - radium | <u>55</u> | 12. Beaded Bullseye 11" vase - marigold - pretty |
| <u>10</u> <u>X4</u> | 4. M'burg Blackberry Wreath deep round sauces (4) - marigold - radium, choice | <u>255</u> | 13. Beaded Bullseye 7 1/2" vase - teal - scarce color |
| <u>145</u> | 5. Bullseye & Beads 13" vase - blue - nice | <u>225</u> | 14. Fashion breakfast creamer & sugar - smoke - scarce set & nice |
| <u>25</u> | 6. Bullseye & Beads 13" vase - marigold - nice | <u>45-00</u> | 15. Embroidered Mums ruffled bowl w/ribbed back - aqua opal - extremely rare bowl w/great opal & nice irid., a super piece of glass |
| <u>105</u> <u>X2</u> | 7. Woodpecker wall pockets (2) - marigold - choice | | |
| <u>35</u> | 8. Waterlily ftd master IC shaped berry bowl - marigold - pretty | | |
| <u>15</u> | 9. Pinecone deep round sauce - marigold | | |

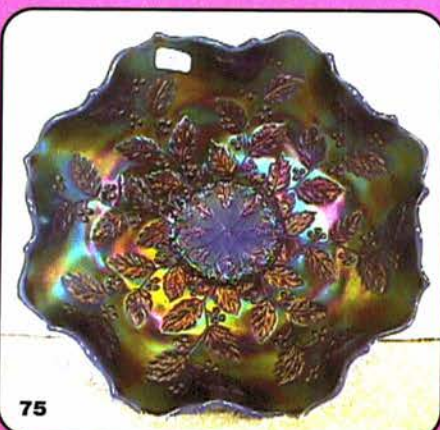
- 250 16. Embroidered Mums ruffled bowl w/ribbed back - lavender - absolutely incredible irid. on this very rare colored bowl, small nick on edge
- 550 17. Embroidered Mums ruffled bowl w/ribbed back - ice green - very scarce bowl & highly desirable
- 800 18. Embroidered Mums ruffled bowl w/ribbed back - ice blue - super pretty irid., nice color, very rare
- 800 19. Embroidered Mums ruffled bowl w/ribbed back - blue - this bowl is the definition of electric, fantastic irid! hard to find w/this quality
- 575 20. Embroidered Mums ruffled bowl w/ribbed back - pastel marigold - super pink & yellow irid. spread evenly across the whole bowl, WOW!
- 350 21. Acanthus chop plate - smoke - very pretty example, scarce
- 245 22. Acanthus chop plate - marigold - pretty irid.
- 250 23. Rose Garden fan shaped 9" large size vase - blue - hard to find, EDA
- 150 24. Rose Garden fan shaped 7 1/2" middle sized vase - blue - also hard to find, EDA
- 225 25. Rose Garden fan shaped 5" small size vase - blue - very hard to find, EDA
- 105 25A. N's Peacock at Urn IC sauce - blue - pretty
- 375 26. Columbia ruffled compote - purple - electric irid., fantastic!
- 85 27. Columbia ruffled compote - smoke - scarce & pretty
- 70 28. Columbia ruffled compote - green - minor mold peeling on one ruffle
- 40 29. Columbia ruffled compote - marigold
- 10000 30. M'burg Mitered Ovals vase - amethyst - super pretty, as nice as an example that I have seen, extremely rare, highly desirable
- 70 31. Peach & Pear ruffled banana boat - marigold *
- 200 32. Pansy ruffled bowl - purple - super, super
- 240 33. Pansy ruffled bowl - smoke - pretty irid.
- 1250 34. Diamond Points 10" vase - aqua opal - fantastic opal, every diamond has opal, pretty light butterscotch irid.
- 325 35. Diamond Points 10" vase - blue - electric & nice
- 225 36. Acorn ruffled bowl - red - very scarce, nice
- 275 37. Acorn ruffled bowl - red slag - has thick swirly streaks throughout the bowl, unusual & rare
- 155 38. Acorn ruffled bowl - peach opal - nice
- 350 39. Acorn ruffled bowl - marigold on moonstone - dark marigold irid.
- 75 40. Acorn ruffled bowl - black amethyst - scarce color
- 50 41. Acorn ruffled bowl - amethyst
- 60 42. Acorn ruffled bowl - blue
- 70 43. Acorn ruffled bowl - powder blue
- 55 44. Acorn ruffled bowl - lime green - light irid.
- 30 45. Acorn ruffled bowl - marigold
- 2400 46. Luster Rose 7 pc water set - purple - super pretty irid., very rare & highly desirable
- 975 47. Rose Garden pitcher - marigold - very hard to find item, dark & nice, Brockwitz
- 215 48. Rococco 4 3/8" vase - smoke - nice
- 45 49. Rococco 4 3/8" vase - marigold
- 1460 50. Hearts & Flowers ruffled compote - green - super rare color & pretty
- 750 51. Hearts & Flowers ruffled compote - reninger blue - very, very scarce color
- 900 52. Hearts & Flowers ruffled compote - aqua opal - pastel & fantastic
- 625 53. Hearts & Flowers ruffled compote - ice blue - pretty irid., very scarce
- 650 54. Hearts & Flowers ruffled compote - blue - electric, as nice as they get
- 160 55. Hearts & Flowers ruffled compote - marigold - dark & pretty, lots of pink irid. *
- 55 56. Hearts & Flowers ruffled compote - white - polished base
- 1400 57. Shell & Sand 9" plate - purple - super rare & pretty, a great Imperial plate
- 275 58. Shell & Sand 9" plate - green - silvery
- 165 59. Western Thistle 5" vase - marigold Riihimaki
- 125 60. Western Thistle 5" vase - marigold - pinched in & flared out more than previous lot, Riihimaki
- 105 61. Petal & Fan large size ruffled bowl - peach opal
- 700 62. Holly 9" plate - amethyst - super pretty example, quite rare color

- 220
800 63. Holly 9" plate - marigold - also pretty
- 215
425 64. **Boggy Bayou 5 1/4" squatty vase - lime green opal - super opal, a dandy**
- 1200 65. Foreign large compote - blue - nicks on bottom edge
- 65 66. **Wickerwork 8 1/2" plate - amethyst - very rare & desirable, Sowerby**
- 65 67. **Rose Show ruffled bowl - aqua opal - super, super opal, very pretty w/light butterscotch multi-colored irid.**
- 65 68. Persian Garden 6" plate - amethyst - light on irid., rare color
- 65 69. Persian Garden 6" plate w/Pool or Pearls back - white - nice
- 25 70. Persian Garden 6" plate - dark marigold
- 35 71. Persian Garden 6" plate - light marigold - almost a radium type finish
- 1100 72. **Thumbprint & Ovals vase - purple - fantastic electric irid., WOW**
- 375 73. **Thumbprint & Ovals vase - marigold - scarce**
- 150 74. Australian Butterfly Bower 6 1/4" ruffled bowl - purple - super pretty
- 1600 75. **Holly ruffled bowl - blue opal - fantastic opal w/super irid.**
- 850 76. **Holly ruffled bowl - red - has red irid., nice**
- 400 77. Holly ruffled bowl - marigold on moonstone, very scarce, nice
- 45 78. Poinsettia milk pitcher - marigold - pretty
- 275 79. Fleur De Lis 13" vase - marigold - massive size w/super irid., Inwald
- 65 80. Rose Garden 5" rose bowl - blue - very scarce, has typical nicks on ground base, done at factory, Brockwitz
- 6500 81. **Cosmos & Cane ladies whimsey spittoon - white - made from small berry bowl, extremely rare item & super, a great whimsey!**
- 6250 82. **Cosmos & Cane ladies whimsey spittoon - honey amber - made from small berry bowl, again, fantastic piece!**
- 25 83. Grapevine Lattice ruffled bowl - marigold
- 600 84. **Ripple 17 1/2" funeral vase - lime green w/marigold overlay - super pretty vase, extremely rare & nice, has 4 5/8" base**
- 225 85. Ripple 17" funeral vase - marigold - dark & super, has 4 5/8" base
- 85 86. Ribbon Tie 3 in 1 edge bowl - blue
- 500
85 87. Fruits & Flowers ftd hldd bon bon - aqua opal - pastel & super, scarce
- 250
85 88. Fruits & Flowers ftd hldd bon bon - aqua opal - butterscotch & pretty, minor nick on base
- 155
250 89. Fruits & Flowers ftd hldd bon bon - blue - super pretty, electric highlights
- 115 90. Miniature Morning Glory 5" vase - smoke - super
- 35 91. Miniature Morning Glory 5" vase - marigold
- 875 92. **Peacocks ruffled bowl w/ribbed back - aqua opal - scarce & nice**
- 450 93. Peacocks ruffled bowl w/ribbed back - purple - super pretty irid. on this rare bowl
- 250 94. **Starburst & Crown pitcher - marigold - very, very rare, has a hint of aqua color in the base, neat pitcher, Riihimaki**
- 35 95. Starburst & Crown tumbler - marigold - scarce, Riihimaki
- 325 96. Shell & Sand ruffled bowl - lavender - a very pretty light shade of purple
- 45 97. Shell & Sand ruffled bowl - marigold - dark & pretty
- 850 98. **Tree Trunk 11" vase - aqua opal - opal from top to bottom, has pretty light butterscotch irid., heavy opal**
- 180 99. Tree Trunk 10" vases (2) - blue - both are super, one has super purple irid., one has electric blue highlights, choice
- 75 100. Tree Trunk 10" vase - purple
- 40 101. Tree Trunk 10" vase - marigold
- 750 102. **Hearts & Flowers PCE bowl w/ribbed back - white - very pretty irid. on this rare bowl**
- 225 103. Triands 6" squatty flared out vase - marigold - unusual shape for this pretty vase, Brockwitz
- 85 104. Triands 8" vase - marigold - dark & pretty, Brockwitz
- 1700 105. **Octagon small size water pitcher - purple - fantastic irid., extremely rare, top notch**
- 45 106. Curved Star 8" bowl - blue - scarce, slightly turned in like a rose bowl, Brockwitz
- 35 107. Curved Star 6" bowl - marigold - slightly turned in, scarce, Brockwitz
- 250 108. **Vintage 9" ruffled bowl - Persian Blue - super pretty, chip on edge**



- 255 109. Fish 9 1/2" frosted vase - marigold - has marigold-etched pattern on top, Jain
- 8000 110. **NUART Homestead chop plate - blue - fantastic rarity that is super pretty, minor pinpoint on edge, mold work super, irid. great!**
- 4500 111. **Homestead chop plate - green - extremely rare color & nice, blue & purple irid.**
- 2700 112. **Homestead chop plate - purple - fantastic example of a very scarce plate**
- 2100 113. **NUART Homestead chop plate - amber - fantastic example, with super mold work, minor pinpoints on the inner rim because of how sharp a mold this has**
- 165 114. Ripple 11" vase - purple - super, has 3 3/8" base
- 175 115. Ripple 11 1/2" vase - lavender - has 3 3/8" base, pretty
- 155 116. Ripple 12" vase - smoke - pretty, 3 3/8" base
- 315 117. Ripple 11 1/2" vase - smoke - has pretty pastel irid., 3 3/8" base
- 115 118. Ripple 10" vase - amber - super pretty, 3 3/8" base
- 125 119. Ripple 8 1/2" vase - green - has 3 3/8" base
- 925 120. **M'burg Courthouse IC shaped bowl - amethyst - radium & super, rare shape**
- 225 121. Windmill pickle dish - purple - super irid.
- 500 122. **Fenton's Fine Rib 9 1/2" vase - lime green opal - super pretty example, neat vase, more opal than most**
- 300 123. Fenton's Fine Rib 11" vase - red - cherry red color, scarce
- 250 124. Fenton's Fine Rib 10" vase - aqua - very pretty, many would call this sapphire
- 160 125. Western Thistle 12" chop plate - marigold - very scarce, Riihimaki
- 475 126. **Stippled Three Fruits 9" plate w/ribbed back - blue - electric & super, very scarce**
- 500 127. Stippled Three Fruits 9" plate w/ribbed back - fiery amethyst or oxblood - very nice
- 175 128. Stippled Three Fruits 9" plate w/ribbed back - pastel marigold - super nice
- 450 129. Open Rose rose bowl - purple - fantastic irid., a beauty
- 120 130. Open Rose rose bowl - amber - a great one, WOW!
- 70 131. Tiger Lily water pitcher - marigold
- 115 132. Tiger Lily small pitcher - amber - Riihimaki
- 250 133. **Tennessee Star 7 1/2" vase - blue nice, Riihimaki**
- 115 134. **Tennessee Star 7 1/2" vase - amber - nice, Riihimaki**
- 1050 135. **Peacocks 9" plate w/ribbed back - blue - electric & super, scarce**
- 95 136. M'burg Rosalind large size ruffled bowl - green - satin, has minor nick on base
- 2500 137. **M'burg Ohio Star vase - green - radium & fantastic! extremely rare & highly desirable, minor nick on pattern, but who cares, this is beautiful!**
- 250 138. Miniature Intaglio nut cup w/Souvenir Viroqua, Wis. - marigold - cute miniature
- 300 139. Acanthus deep round bowl - purple - electric blue irid., WOW!
- 140 140. Acanthus deep round bowl - aqua ^{olive}
- 655 141. Acanthus deep round bowls (2) - green - choice
- 80 142. Acanthus deep round bowl - marigold - an absolute beauty
- 175 143. Acanthus deep round bowl - smoke - pastel yellow irid., super
- 300 144. **Leaf Columns 10" vase - sapphire - very rare color & nice ***
- 250 145. Leaf Columns 10" vase - white - scarce, nice
- 145 146. Leaf Columns 10" vase - purple - pretty
- 125 147. Leaf Columns 10 1/2" vase - green - nice
- 85 148. Leaf Columns 10" vase - amethyst - nice
- 500 149. **Starburst 7 pc. water set - blue - super, Riihimaki**
- 115 150. Starburst tumbler - marigold - scarce, Riihimaki
- 900 151. Fishnet & Rose 6" vase - red - very scarce & desirable
- 325 152. Grapevine Lattice 7 1/2" plate - purple - pretty

- 135 153. Ripple 11" vase - aqua - scarce & desirable, 2 7/8" base
- 105 154. Ripple 12" vase - olive green - different color, 2 7/8" base
- 4175 155. Ripple 10 1/2" vase - blue - extremely rare color & pretty, has 2 7/8" base
- 65 156. Ripple 11" vase - amber - nice, 2 7/8" base
- 25 157. Ripple 10" vase - marigold - 2 7/8" base
- 125 158. Ripple 11" vase - clambroth - 2 7/8" base
- 1200 159. **Imperial Grape whimsey spittoon - green - extremely rare, made from 9" bowl, only one known, a top Imperial piece**
- 1100 160. **Imperial Grape whimsey spittoon - marigold - same as lot 159, does have minor nick on piece, but who cares on this super rare Imperial whimsey!**
- 450 161. **Bishop's Mitre 8" vase - blue - neat**
- 315 162. Rex 3" vase - marigold - minor little nick on polished base, neat miniature, EDA
- 2000 163. **Hattie chop plate - purple - electric & super, very rare & highly desirable**
- 35 164. Miniature Thin Rib & Drape 5 1/4" vase - marigold
- 1050 165. **Embroidered Mums ftd hldd bon bon - white - frosty & pretty, very scarce piece**
- 145 166. **Columbia 8 1/2" flat plate - marigold - super pretty, very scarce**
- 450 167. **Four Seventy Four middle size 10" vase - marigold - very rare, super desirable, neat vases**
- 700 168. **Four Seventy Four small size 8" vase - marigold - also very nice & hard to find**
- 2400 169. **Tree Trunk 6" squatty vase - ice blue - super pretty color & irid., rare**
- 85 170. Carolina Dogwood ruffled bowl - marigold on milkglass - as nice as these get
- 750 171. **N's Peacock at Urn master IC bowl - ice green - scarce & super nice, highly desirable**
- 155 172. Pebbles 9" plate - marigold on moonstone - hard to find
- 250 173. **Carolina Dogwood 9" plate - blue opal - a little deep but gotta call it a plate, rare**
- 2400 174. **Poppy Show 9" plate - blue - very pretty example & highly desirable**
- 325 175. Cosmos & Cane punchbowl shaped ruffled compote - white - neat piece
- 225 176. Acorn 7" ruffled bowl - amberina - very nice
- 65 177. Acorn 7" ruffled bowl - amber - nice
- 125 178. Acorn 7" ruffled bowl - peach opal - nice
- 85 179. Acorn 7" ruffled bowl - marigold on moonstone - light on irid., but rare
- 135 180. Acorn 7" ruffled bowl - ice blue - light on irid., but rare
- 55 181. Acorn 7" ruffled bowl - aqua
- 90 182. Acorn 7" ruffled bowl - green - also nice
- 35 183. Acorn 7" ruffled bowl - light amber
- 95 184. Acorn 7" ruffled bowl - lime green w/marigold overlay - pretty
- 105 185. Pulled Loop 5" squatty vase - white - frosty & super, has 6" mouth, minor chips on base
- 275 186. Jacobean Ranger pitcher - marigold - dark, super, Inwald
- 35 187. Jacobean Ranger tumbler - marigold - dark & super, Inwald
- 2200 188. **Butterfly & Tulip square shaped ftd bowl - purple - fantastic, as nice as these get, a carnival classic**
- 20 189. Australian Swan large ruffled bowl - marigold
- 65 190. Australian Swan ruffled sauce - marigold - pretty
- 325 191. **Curved Star 7" vase - blue - scarce & pretty, Brockwitz**
- 175 192. **Curved Star 7" vase - marigold - also very pretty, Brockwitz**
- 600 193. **Orange Tree ruffled bowl - marigold on moonstone - very pretty example, rare & highly desirable**
- 325 194. Parlor Panels 11" vase - lavender - pretty irid.
- 65 195. Parlor Panels 13" vase - green
- 95 196. Parlor Panels 12" vase - marigold
- 600 197. **Chrysanthemum chop plate - smoke - has stretch irid., on this very rare plate, NICE!**
- 65 198. Plume Panels 11" vase - amethyst
- 67 199. **Greek Key ruffled bowl w/ribbed back - blue - has electric highlights, very pretty**
- 275 200. Greek Key ruffled bowl w/BW back - marigold - pretty
- 550 201. **Four Pillars 11" vase - sapphire - super pretty, very rare & desirable**
- 165 202. Four Pillars 10" vase - aqua opal - very pretty butterscotch version w/lots of opal
- 110 203. **Fleur De Lis large salad bowl - marigold - dark & super, Inwald**



- 175 204. **Starburst & Diamonds 10" stemmed vase - amber - nice, unusual vase, Riihimaki**
- 375 205. **Oriental Poppy tankard water pitcher - marigold - very dark, nice even irid., excellent example**
- 135 206. Pansy hdd nappy - purple - pretty!
- 750 207. Scroll Embossed 9" plate - purple - fantastic blue irid.
- 375 208. **Parlor Panels 4" squatty vase - clambroth - has fantastic irid., neat squatty vase**
- 65 209. Parlor Panels 5 1/2" squatty vase - marigold - dark & nice *
- 375 210. **Luster Rose IC shaped centerpiece bowl - purple - fantastic! scarce**
- 170 211. Luster Rose IC shaped centerpiece ftd bowl - smoke - super & scarce
- 250 212. Fleur De Lis 11" chop plate - marigold - scarce, dark & nice
- 135 213. Double Tulip 10" vase - marigold - Rindskopf?
- 105 214. Double Tulip 7" vase - marigold - Rindskopf?
- 175 215. Stippled Strawberry ruffled bowl w/ribbed back - pastel marigold - super irid., very scarce
- 215 216. Australian Gum Tips 8" vase - purple - has 2 3/4" base, unusual small size
- 575 217. Stippled Good Luck ruffled bowl w/ribbed back - blue - electric & absolutely super
- 350 218. **Rose Garden 7 1/2" vase - blue - very very scarce, Brockwitz**
- 125 219. Sunk Daisy 3" ftd bowl - marigold - cute little piece, EDA
- 1500 220. **Open Rose 9" plate - purple - fantastic blue irid., a real beauty**
- 150 221. Australian Butterfly & Christmas Bells stemmed compote - marigold
- 650 222. **Victorian square ruffled bowl - purple - absolutely super, from Bob Allaire collection**
- 400 223. **Captive Rose 9" plate - marigold - very nice, scarce**
- 525 224. **Diamond Lace 7 pc. water set - purple - fabulous set, tumblers & pitcher all great**
- 60 225. Ski Star large ruffled bowl - peach opal
- 525 226. **Morning Glory 13" funeral vase - purple - very pretty vase, has 9" wide mouth, neat**
- 30 227. Three Fruits ruffled bowl w/plain back - horehound - couple nicks on base, pretty
- 550 228. **Kulor 8" vase - marigold - scarce & desirable, EDA**
- 600 229. **Kulor 6" vase - blue - pretty, scarce & desirable, EDA**
- 175 230. Acanthus ruffled bowl - smoke - pretty
- 155 231. Acanthus ruffled bowl - marigold - pretty yellow irid.
- 105 232. Acanthus ruffled bowl - marigold - dark & nice, ruffles are pinched in tighter on this one
- 425 233. **Stippled Peacocks 9" plate w/ribbed back - pastel marigold - pretty pink, green & yellow irid., nice!**
- 10 234. Sunk Daisy 9" large ftd round bowl - marigold - large chip on one foot, EDA
- 65 235. Rose Garden 6" rose bowl - marigold - nicks on ground base, Brockwitz
- 300 236. **M'burg Hobnail spittoon - green - extremely rare color, has 1" crack**
- 200 237. **M'burg Hobnail Swirl spittoon - amethyst - nice**
- 40 238. M'burg Hanging Cherries ruffled sauce - marigold - satin
- 650 239. **Moonprint pitcher - marigold - scarce & nice, Brockwitz**
- 1000 240. **Cosmos & Cane stemmed compote - white - very pretty & very scarce, neat piece**
- 155 241. Heavy Grape 8" plate - purple - super pretty
- 650 242. **Gothic Arches 10" vase - smoke - very hard to find vase plus pretty**
- 130 243. **Gothic Arches 18" stretched out vase - marigold - unusual to see this tall, neat**
- 75 244. Cut Flowers vase - marigold
- 850 245. **Hearts & Flowers ruffled bowl w/ribbed back - purple - has pretty blue irid., beautiful**
- 325 246. **Camelia's Loop 6" vase - blue - maker unknown *Spinning Starlet***
- 350 247. Stippled Three Fruits spt ftd ruffled bowl - blue - pretty w/electric highlights, scarce color
- 140 248. Drapery Variant 9" vase - blue - electric & pretty
- 2200 249. **Strawberry ruffled bowl w/BW back - peach opal - nice opal for a Northwood peach opal piece, very pretty, extremely rare!**
- 215 250. Lined Lattice 10" vase - purple - nice

- 125 251. Lined Lattice 10" vase - white
- 115 252. Fleur De Lis small oval jardinière - marigold - Inwald
- 125 253. Orange Tree 9" plate - white - scarce
- 775 254. Wishbone & Spades 6" plate - purple - very pretty
- 30 255. Open Rose 5" ruffled bowl - smoke - pretty
- 215 256. **Starburst 5" vase - amber - neat shape, looks like a water drop, scarce, Riihimaki**
- 250 257. Open Rose 8" ruffled bowl - purple - fantastic irid.
- 45 258. Circle Scroll 2 sides up hatshape - marigold
- 650 259. **Shell 9" plate - smoke - very pretty plate, highly desirable & quite rare**
- 750 260. **Shell 9" plate - marigold - dark & super very scarce**
- 20 261. Swan salt - celest blue
- 400 262. **N's Stippled Peacock at Urn master IC bowl - pastel marigold - super, super bowl, a dandy**
- 325 263. Constellation ruffled compote - ice lavender - rare & pretty
- 700 264. **Hobstar Flower ruffled compote - emerald green - as super as I've seen one of these**
- 115 265. Orange Tree IC shaped bowl - blue
- 150 266. Tree Trunk 10" vase - green - super pretty
- 95 267. Tree Trunk 7" squatty vase - green
- 650 268. **Octagon stemmed compote - purple - very rare little compote & super pretty**
- 160 269. Scroll Embossed 9" round bowl - aqua - super pretty irid.,
- 1600 270. **Tree Trunk elephant's foot 15" funeral vase - purple - fantastic irid on this rare vase, some manufacture roughness on three of the ruffles, a great vase!**
- 95 271. Curved Star rose bowl w/original metal grill - marigold - Brockwitz
- 135 272. Ripple 4 1/2" vase - marigold - neat little vase, 2 1/2" base
- 205 273. Poppy pickle dish - blue - pretty
- 400 274. **Fluted Scroll whimsey spittoon shape - amethyst - very rare & pretty, one of just a few known, cracked**
- 80 275. Australian Magpie ruffled sauce - marigold
- 175 276. Australian Emu ruffled sauce - marigold
- 575 277. **Pansy dresser tray - purple - spectacular irid.**
- 55 278. Four Flowers 6" plate - peach opal - pretty
- 150 278A. Round Up 9" plate - white - super pretty
- 45 279. Imperial Grape ruffled bowl - amber - dark & pretty
- 350 280. **Diamond Points 8" squatty vase - ice green - pretty & very scarce**
- 45 281. Peacock Tail tri-cornered dish - green
- 750 282. **Fanciful 9" plate - purple - another super pretty piece**
- 200 283. Plaid ruffled bowl - marigold - a very pretty example of this
- 85 284. Holly ruffled hatshape - marigold on milkglass - scarce, nice
- 375 285. **Rose Garden fan shaped middle-sized 7 1/2" vase - marigold - scarce & highly desirable, EDA**
- 155 286. Ripple 9 1/2" vase - purple - super pretty, 2 1/2" base
- 35 287. Ripple 7 1/2" vase - marigold - 2 1/2" base
- 115 288. Ripple 9 1/2" vase - white - very scarce color, 2 1/2" base
- 500 289. Australian Kangaroo large ruffled bowl - purple - scarce, nice
- 35 290. Ripple 15" vase - lime green - 3 7/8" base
- 65 291. Asters ftd stemmed 6" cake plate - marigold - Brockwitz
- 160 292. **Stippled Three Fruits ruffled bowl w/ribbed back - marigold - dark & super**
- 525 293. Britt tumbler - blue - very scarce
- 500 294. **Sunflower spt ftd ruffled bowl - blue - very pretty w/electric highlights**
- 60 295. Peacock at the Fountain punch cup - ice blue
- 65 296. Fashion water pitcher - marigold - nice
- 160 297. Basketweave Open Edge ruffled basket - red - nice example
- 1700 298. **Hearts & Flowers 9" plate w/ribbed back - green - super pretty example of this very rare plate**
- 135 299. Four Seventy Four punch cup - emerald green
- 25 300. M'burg Hobstar & Feather punch cup - marigold
- 200 301. Petal & Fan crimped edge 6" plate - purple - super pretty
- 350 302. Starlight 6" vase - blue - pretty, Karhula
- 185 303. Apple Blossom Twigs low ruffled bowl - white - super
- 65 304. Flute toothpick - purple - super
- 85 305. Kittens 2 sides up dish - marigold
- 65 306. Waffleblock punch bowl top - aqua - very scarce color
- 95 307. **Jupiter vase - amber - maker unknown**

- 105 308. Wishbone ftd ruffled bowl - green
55 309. Elephant 6 1/2" vase - marigold - scarce, Jain
165 310. Drapery 8 1/2" vase - ice green - scarce color & nice *
35 311. Iris ruffled compote - amethyst
115 312. Josef's Plumes 6" vase - pastel marigold - Bernsdorf *Camellias loops*
800 313. **Colonial Lady 6" vase - purple - super!! extremely rare & highly desirable**
225 314. Smooth Panels 8" vase - marigold on milkglass - 2 1/2" base
1200 315. **Good Luck ruffled bowl w/ribbed back - aqua opal - spectacular irid. on a super pastel bowl, minor nick on cleat of horseshoe**
1350 316. **Good Luck ruffled bowl w/ribbed back - sapphire - fantastic looking bowl w/super irid.**
550 317. **Good Luck ruffled bowl w/BW back - horehound - very pretty example in this rare color**
500 318. **Good Luck ruffled bowl w/ribbed back - lavender - fantastic irid., a beauty**
135 319. Good Luck ruffled bowl w/ribbed back - marigold - pretty
30 320. Colonial mug - marigold
20 321. Luster Rose tumbler - clambroth
25 322. Luster Rose tumbler - marigold
10 323. Octagon water goblet - marigold
10 324. Imperial Grape water goblet - clambroth
25 325. M'burg Grape Wreath Variant 7" IC shaped bowl - amethyst - radium, chip on edge
10 326. Pansy pickle dish - marigold - chip on base
10 327. Three in One toothpick - green - contemporary? *Y 46*
500 328. Poppy Show vase - black amethyst - contemporary, fantastic, Singleton Bailey
150 329. Poppy Show vase - blue - Singleton Bailey
135 330. Luster Rose 5 pc water set - blue - contemporary
145 331. Presnick oil lamp - red - contemporary
110 332. Field Flower 7 pc water set - purple - contemporary
150 333. Robin 7 pc. water set - red - contemporary
60 334. Luster Rose ftd 9" plate - amberina - has Imperial Cross marks, not iridized
20 335. Cut patterned vase - smoke - chips on base, old?

Jim and Jan Seeck **Seeck Auctions** 644-424-1116

Seeck Auctions

P.O. Box 377
Mason City, Iowa 50402

