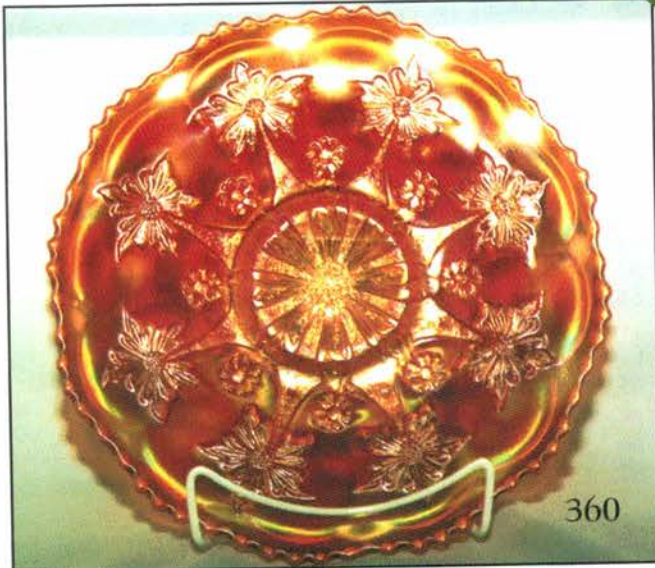


1st Day of Spring CARNIVAL GLASS AUCTION

Session #1 - Friday, March 21, 1997, 6:00 p.m.
Session #2 - Saturday, March 22, 1997, 9:30 a.m.



360



300



277



250



276

Held Inside the Mickey Reichel Auction Center

1 Mile North of I-70 on Hwy. 5, Exit 101, Boonville, Missouri
Preview Friday 12 p.m. - 6 p.m. and 8 a.m. - 9:30 a.m. Saturday

Make Reservations NOW at one of these local motels:

Comfort Inn: 816-882-5317 • Super 8 Motel: 816-882-2900 • Days Inn: 816-882-8624

Sellers: William and Debra Cotter of Wisconsin and Aleda Ort of Iowa

WRITE IN BIDS: If you are unable to attend the auction, we will be happy to accept absentee bids which must be received by THURSDAY, MARCH 20, 1997. Don't Delay. **FOR AUCTION PRICE RESULTS:** Send S.A.S.E and \$3.00 to 516 Third Street, Boonville, MO 65233.
PLEASE NOTE: There is a \$5 handling charge for each successful bid which will be added to the selling price for all write-in bids. This is in addition to the cost of postage, insurance and packing. Your write-in bid will be entered just as if you are present and bidding. Successful bidders will be notified in 1 to 3 days by the auctioneer (so be sure to include your phone number). Direct mail bids to Auctioneer Mickey Reichel, 516 Third Street., Boonville, MO 65233-1536. Terms: Cash or Check accepted with proper I.D. and Social Security Number and References. Announcements made day of the auction supercede all printed material. Not Responsible for Accidents or Sold Items.

Call for additional information: 816-882-5292 days or 816-882-5283 evenings.
FAX: 816-882-5292 (evening hours start FAX transmission after beep)



Old and Contemporary Carnival Glass Offered (Evening - Day 1)

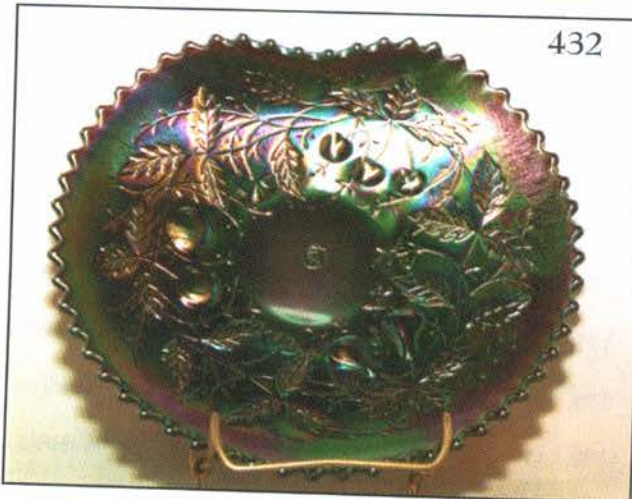
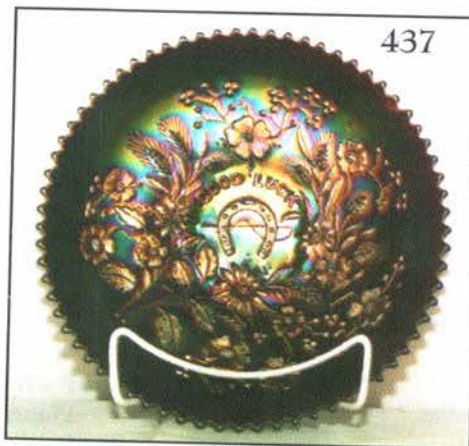
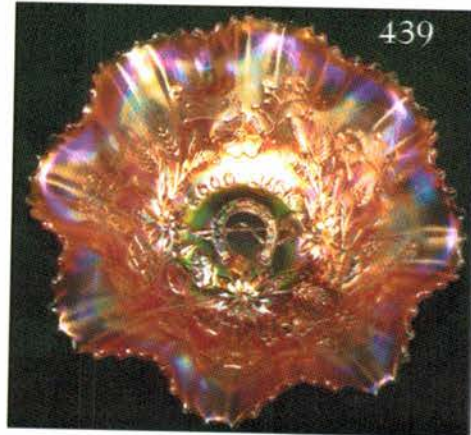
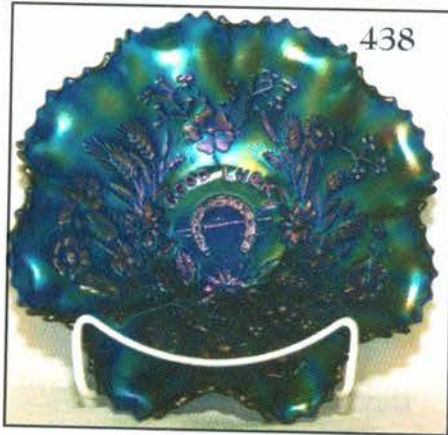
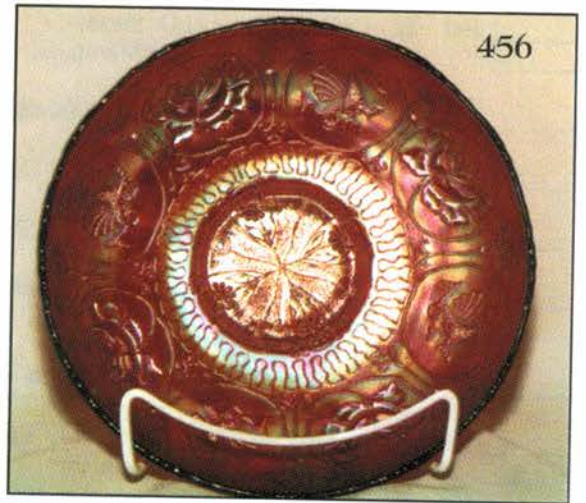
- _____ 1. Teal - Contemporary - 7 1/4" Ftd. Open Rose Bowl - Gorgeous
- _____ 2. I.B. - Contemporary - I.G. Imperial Grape Compote
- _____ 3. Cobalt - Contemporary - L.I.G. Imperial Open Rose 6 1/2" - Bowl
- _____ 4. Red - Contemporary - I.G. Imp. Robin Mug
- _____ 5. Smoke - Contemporary - 6 I.G. Imp. Grape Wines - 6x\$
- _____ 6. **Red - Contemporary - 10" Fenton Cherry Chain Bowl**
- _____ 7. B.A. - Contemporary - 11" Farm Yard Chop Plate - Signed D.B.S.
- _____ 8. W - Contemporary - Homestead Chop Plate - I.G.
- _____ 9. Red Amy - Contemporary - 8" Fenton Cherry Chain Rose Bowl
- _____ 10. **I.B. - Contemporary - Lg. Daisy and Button Basket Vase - Signed S**
- _____ 11. A.O. - Contemporary - 8 1/2" Fenton Holly Bowl
- _____ 12. M - Old - 7 Pc. - Crackle Water Set - Nice Match
- _____ 13. M - Old - 7 Pc. - Hex Optic Water Set
- _____ 14. M - Old - 5 Pc. - Louisa Water Set
- _____ 15. M - Old - Tree Bark Water Set - Pitcher and 8
- _____ 16. **M - Old - Tree of Life Pitcher and 1 Tumbler - Rare**
- _____ 17. M - 4 Golden Ox Mugs - 4x\$
- _____ 18. A - Fenton Butterfly Bun Bun
- _____ 19. A - Blackberry Bramble Compote - Very Detail Pattern
- _____ 20. G - 6 1/4" - Rd. Persian McDallion Bowl
- _____ 21. Helios - Scroll Embossed Compote - Radium
- _____ 22. M - Rd. Fenton Peacock and Urn Compote
- _____ 23. M - 8 1/2" Octagon Bowl - Radium
- _____ 24. M - 8" Thorn and Thistle Ftd. Bowl
- _____ 25. M - Blackberry and Butterfly - Spooner - Dark
- _____ 26. Smoke - Contemporary - I.G. Grape - 7 Pc. Water Set - Super
- _____ 27. M - Contemporary - I.G. Windmill - 7 Pc. Water Set - Satin Center
- _____ 28. **I.G. - Contemporary - L.I.G. Tiger Lilly, 7 Pc. Water Set - Beautiful**
- _____ 29. B - Contemporary - West Mor. 5 Pc. Water Set - Super Checker Board
- _____ 30. I.G. - Contemporary - L.I.G. Loganberry Vase
- _____ 31. Pink - Contemporary - L.I.G. Loganberry Vase
- _____ 32. G - Contemporary - I.G. Loganberry Vase
- _____ 33. M - Contemporary - I.G. Imperial Grape 7 Pc. Wine Set
- _____ 34. **B - Contemporary - A.I.G. Stippled Open Rose, Butter, Cr. & Sugar**
- _____ 35. **P - Contemporary - Mosser, Cherry and Lattice, Butter, Cr. & Sugar**
- _____ 36. **B - Contemporary - I.G. Aurora Jewels - Lg. Corn Vase - Rare**
- _____ 37. Teal - Stretch 8 1/4" Wide Panel Plate
- _____ 38. **Red Amberina - Stretch 8 1/4" Wide Panel Plate - Super Color**
- _____ 39. **Red Amberina - Stretch 6 1/4" Wide Panel Plate - Super Color**
- _____ 40. Celeste - Short Stretch Candle Holders
- _____ 41. Vas. - Stretch 8 1/2" Plate
- _____ 42. Florentine - Stretch Small Compote - Ice Green
- _____ 43. Amberina - Flute ? Sherbet - Stretch
- _____ 44. Red - Stretch 4 1/2" Opening Smooth Rose Bowl
- _____ 45. Amber - 8 1/2" Deep Stretch Round Bowl
- _____ 46. **Red - Smooth Low 9" Rolled Lip Bowl**
- _____ 47. **Celeste - 10 1/2" Stretch Low I.C.S. Bowl**
- _____ 48. Clam - 10" Stretch Ftd. Console Bowl
- _____ 49. White - 9" Stretch Flared Wide Panel Bowl
- _____ 50. **Vas. - #636 Pattern Candy Jar - Northwood Book - Pg. 134**
- _____ 51. Celeste - #659 Pattern Candy Jar - Northwood Book - Pg. 134
- _____ 52. Celeste - 9 1/2" Tall Candle Stick Vase Stretch
- _____ 53. Clear - Irid - 11 1/4" Smooth Panels Vase
- _____ 54. M - Candy Jar w/Lid
- _____ 55. M - 9" Ftd. Floral and Optic Bowl - Radium
- _____ 56. Clam - or Clear 8 1/2" Floral and Optic Bowl - Beautiful
- _____ 57. M-Pansy Nappy
- _____ 58. M - Star Medallion Milk Pitcher - Dark Radium
- _____ 59. M - Star Medallion Goblets - 2x\$ - Scarce
- _____ 60. **M - Star Medallion Stem Compotes - A or B**
- _____ 61. M - Star Medallion 8" Bowl
- _____ 62. M - Wreath Rose - Rose Bowl
- _____ 63. **M - Wreath Rose - Tri-Corner Whimsey Rose Bowl**
- _____ 64. Clam - Star and File Lg. Compote - Scarce
- _____ 65. **Clam - Star and File - 2 Hld. Celery Vase - Rare Color**
- _____ 66. M - 9" Ftd. Imperial Windmill Bowl
- _____ 67. **Clam - Imperial Pansy Oval Relish - Super Gold - Bluish Irid.**
- _____ 68. Amberina - Imperial Grape 7" - Rd. Bowl - Iron Cross - Not Irid.
- _____ 69. M - Octagon Nappy - Scarce Item
- _____ 70. **M - Octagon Goblets - Very Nice - 6x\$**
- _____ 71. M - 8" Octagon Water Pitcher - Dark One
- _____ 72. M - Octagon Tumblers - Ground Examples - 6x\$
- _____ 73. B.A. - Contemporary - 8 3/8" Fenton Hen Covered Dish
- _____ 74. **B.A. - Contemporary - Fenton Mermaids Planter - Scarce**
- _____ 75. **B.A. - Contemporary - Fenton Atlantis Lg. Vase - Scarce**
- _____ 76. P - Grape and Cable 1969 Presznicks Tob. Jar
- _____ 77. B.A. - Contemporary - Fenton Paneled Daisy - Candy
- _____ 78. B.A. - Contemporary - Fenton Wild Strawberry Scroll - Candy
- _____ 79. B.A. - Contemporary - Fenton Chrysanthemum Planter
- _____ 80. **B.A. - Contemporary - Fenton Peacock Garden Vase**
- _____ 81. **Cobalt - Contemporary - 12" Lg. Summit ? - Indian Buffalo Bowl - Super**
- _____ 82. Red - Contemporary - 10" Acanthus - 4 Ftd. Bowl - I.G.
- _____ 83. **M - Contemporary - LaBella Rose Vase - I.G.**
- _____ 84. Red - Contemporary - 8" Imperial Lace Vase I.G.
- _____ 85. Red - Contemporary - 8" Fenton Whirling Hob Star Vase
- _____ 86. Red - Contemporary - Heavy Pineapple Stem - Compote
- _____ 87. **Red - Contemporary - Fenton Daffodil Vases - A or B**
- _____ 88. **B.O. - Contemporary - Singing Birds Tumblers - 4x\$**
- _____ 89. Smoke - Contemporary - Imperial - Grape Salt & Pepper - I.G.

- _____ 90. W - Contemporary - I.G. Swan
 _____ 91. B - Contemporary - West Moreland - Swan Butter, Cr. & Sugar
 _____ 92. **B - Contemporary - I.G. Owl Tooth Pick - Glass Eyes**
 _____ 93. B - Contemporary - A.L.I.G., Owl Covered Dish - Glass Eyes
 _____ 94. P - Contemporary - Fenton 11", C.R.E. Hearts & Flowers Bowl
 _____ 95. P - Contemporary - Fenton 9 1/4" Persian Med. Plate
 _____ 96. **A.O. - Contemporary - Fenton 10", C.R.E. Ruffled Grape & Cable Bowl**
 _____ 97. **A.O. - Contemporary - Fenton 10" Cherry Chain Bowl**
 _____ 98. M - N Leaf and Beads Nut Bowl - Epoxy on Ft.
 _____ 99. G - Butterfly and Fern Tumbler
 _____ 100. **B - Hearts and Flowers, Rib Bk. Compote - Scarce Beauty**
 _____ 101. **Smoke - 9" Flared Rd. Hattie Bowl - Super Pink & Blues**
 _____ 102. P.O. - 9" Ruffle Single Flower Bowl
 _____ 103. P - Louisa Rose Bowl
 _____ 104. Teal - 8 1/2" Ftd. Lousia Bowl - Scarce
 _____ 105. Teal - #270 Pattern Compote
 _____ 106. M - Coin Dot Rose Bowl - Pretty
 _____ 107. A - 9 1/2" Fenton - Three Fruits Plate
 _____ 108. B - 9 1/2" Fenton - Three Fruits Plate
 _____ 109. Helios - Scroll Embossed Plate - Pretty Silver Irid.
 _____ 110. **B - 7" 6-Ruffle Peacock Tail Bowl - Very Pretty**
 _____ 111. M - 7 1/2" Ruffle Fenton Acorn Bowl - Rich Irid.
 _____ 112. P - 8-Ruffle Embroidered Mums Bowl
 _____ 113. A - Ruffled N Greek Key Bowl - B.W. Ext. - Very Popular
 _____ 114. **A - 7 3/4" Ruffle Ftd. Stag and Holly Bowl - Scarce Color**
 _____ 115. **M - 11" I.C.S. Ftd. Two-Flowers Bowl - Beautiful Example**
 _____ 116. M - 8 1/2" Four-Flowers Rd. Bowl - Soda Gold Ext. - Scarce
 _____ 117. B - 8 1/2" 6-Ruffle Windflower Bowl - Very Nice
 _____ 118. M - Tree Bark Pitcher and 8 Tumblers
 _____ 119. M - N Daisy and Plume - Compote
 _____ 120. **M - My Lady's Powder Box - Very Desirable**
 _____ 121. **M - 8" Rd. Acanthus Bowl - Super Example**
 _____ 122. M - Vintage Powder Jar w/Lid
 _____ 123. M - Fenton Strawberry Bon Bon - Lots of Pink
 _____ 124. M - Pair Candle Stick Holders Pat. ? - Six-sided Base
 _____ 125. Florentine - I.G. Pastel Swan
 _____ 126. M - Ruffled Fenton Holly Bowl - Dark
 _____ 127. **B - 3 in 1 Edge - Fenton Holly Bowl - Very Pretty**
 _____ 128. **M - 8 3/4" 3 in 1 Edge - Fenton Vintage Bowl - Great**
 _____ 129. G - 8 3/4" 6-Ruffle - Fenton Vintage Bowl
 _____ 130. B - French Knots Ruffle Hot Bowl
 _____ 131. M - 7 1/2" Fenton Grape & Cable Bowl
 _____ 132. M - 7 1/4" 6-Ruffle N Poppy Bowl Ext. Pat.
 _____ 133. M - 9" Deep Ftd. Chrysanthemum Bowl
 _____ 134. M - Orange Mugs - All Pretty - A, B, C or D
 _____ 135. M - Fish Scale and Beads - 6 1/2" - Bowl
 _____ 136. B - 6 1/4" Persian Med. Plate - Cute & Flat
 _____ 137. **G - 3 in 1 Edge Fenton Thistle Bowl - Scarce Shape**
 _____ 138. G - 3 in 1 Edge Ribbon Tie Bowl
 _____ 139. Dark - P - N Fruits and Flowers Compote
 _____ 140. A - David and Bows Ruffle Bowl
 _____ 141. M - 6" Squatty Boggy Bayou Vase - Nice Example
 _____ 142. B - 9 1/2" Rustic Vase - Very Nice
 _____ 143. P - 6 1/2" N Thin Rib Vase - 5 1/2" Top - Great Multi Irid.
 _____ 144. M - 6" Rd. Ftd. Lotus and Grape Bowl
 _____ 145. P.O. - Question Mark Compote - Great Opal Handles
 _____ 146. Amberina - Fenton Contemporary Butterfly on a Twig
 _____ 147. **Red - Contemporary - Field Flower - 7 Pc. Water Set - I.G.**
 _____ 148. **Saph. - Contemporary - Field Flower - 5 Pc. Water Set - L.I.G.**
 _____ 149. **Blue - Contemporary - Field Flower - 5 Pc. Water Set - L.I.G.**
 _____ 150. **Purple - Contemporary - Field Flower - 5 Pc. Water Set - L.I.G.**
 _____ 151. M - 8 3/4" Fenton Fine Rib Vase - Great Example
 _____ 152. **M - 10 3/4" N Tree Trunk Vase - Radium Golds & Blues**
 _____ 153. M - 9 1/4" Knotted Beads Vase - 5 1/4" C.R.E. Top
 _____ 154. **? Teal - 8 1/2" Ripple Vase - 4 1/2" Top w/Pinched Spout - A Beauty**
 _____ 155. A - 11" Long Thumb Print Vase
 _____ 156. G - 9 1/2" Dia. and Rib Vase - Very Pretty
 _____ 157. P - 10 1/2" N Fine Rib Vase
 _____ 158. A - 7 1/2" Squatty Dia. Point Column Vase
 _____ 159. P - 9 1/2" N Diamond Points Vase - 4 1/2" Top
 _____ 160. G - 10 1/4" April Showers Vase - Peacock Tail Int.

Day Two

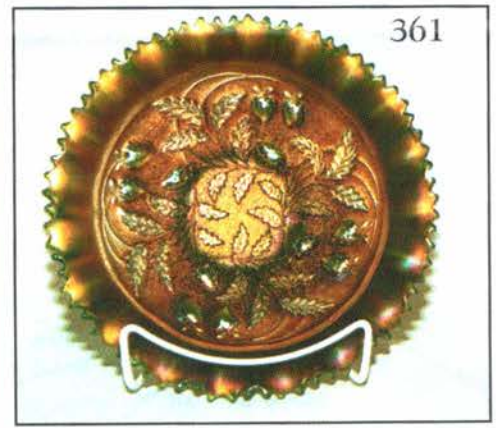
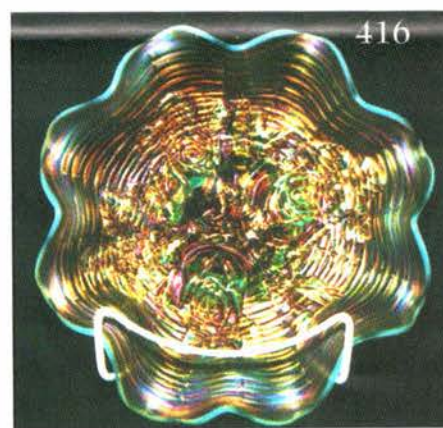
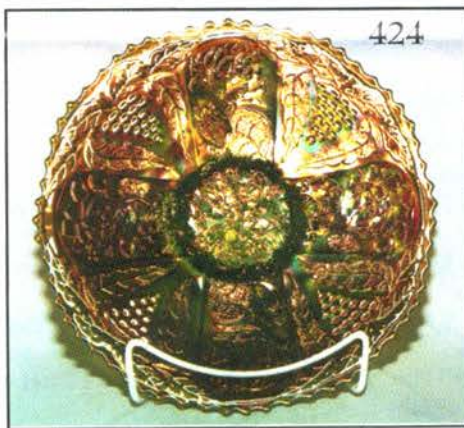
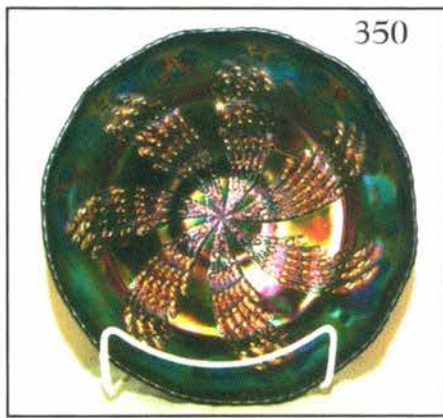
Great Color, Irid. and Rarity

- _____ 161. **P - 11" Imperial Grape Collar Base Fruit Bowl - Super Radium Multi**
 _____ 162. **P - 11" Imperial Grape Collar Base Fruit Bowl - Radium Gold Purple Hi-Lites**
 _____ 163. **P - 11 1/2" 6-Ruffle Victorian Bowl - Very Scarce and Nice**
 _____ 164. Lav. A - 9 1/2" P.C.E. N Stippled Rays Bowl
 _____ 165. 9 1/2" 6-Ruffle Fenton Holly Bowl - Super Green & Golds
 _____ 166. Clam - Star Medallion Milk Pitcher - Great Example
 _____ 167. M - Poinsettia Milk Pitcher - Radium Pinks
 _____ 168. **P - Imperial Grape Goblet - Super & Rare - 2 Pinheads on Rim**
 _____ 169. B - 9 1/2" Ftd. Deep Ruffle Chrysanthemum Bowl - Nice
 _____ 170. A - 8" Tight C.R.E. Heart and Vine Bowl - Rare Shape
 _____ 171. **Teal - 9 3/4" Tall Waffle Block Hdl. Basket - Rare Color**
 _____ 172. P - Star Fish Compote - Nice and Very Scarce
 _____ 173. G - Singing Birds Mug - Always in Demand
 _____ 174. M - 6 1/4" Hexagon Wide Panel Candle Sticks - ? Pat.
 _____ 175. M - 10 1/2" Rd. Low Ftd. Chrysanthemum Bowl
 _____ 176. M - 10" Ftd. Water Lily or Poinsettia and Lotus Bowl
 _____ 177. P - 8 3/4" 8-Ruffle Dome Base N 3-Fruits Bowl - Multi Irid.
 _____ 178. **P - 9" Ruffle Imp. Pansy Bowl - Super Radium Item**
 _____ 179. G - 9" Collar Base N Ruffle B.W. 3-Fruits Bowl - Pinks & Greens
 _____ 180. M - 9" Rd. Flared Garden Path Vt. Bowl - Nice & Scarce



- _____ 181. A - 9" 6-Ruffle Fenton Vintage Bowl - Blue, Pinks, Satin
- _____ 182. B - Vintage Fernery Bowl - Multi Elec. Irid.
- _____ **183. M - Fruits and Flowers Bon Bon - Pumpkin**
- _____ 184. Amberina - 8 1/4" Stretch Wide Panel Plate
- _____ **185. M - Stippled Fruits and Flowers Bon Bon - Rare Stippled**
- _____ 186. P - Fruits and Flowers Bon Bon - Beautiful Multi-Irid.
- _____ 187. G - Fruits and Flowers Bon Bon - Scarce Color
- _____ 188. M - 6-Ruffle Pony Bowl - Old Favorite - Very Nice
- _____ 189. A - 8 1/2" 10-Ruffle Windflower Bowl - Great and Scarce Shape
- _____ 190. A.O. - N Drapery Rose Bowl - Always in Demand
- _____ **191. M - Thistle Vases 6" Tall - Choice - Very Scarce**
- _____ 192. B - 7 1/2" Dia. and Bows Vase - Cute Vase
- _____ 193. M - Hen and Chicks Covered Dish
- _____ 194. M - 8" Ruffle Spat. Ftd. Chrysanthemum Bowl - Scarce Size
- _____ 195. A - 9" 3 in 1 Fenton Vintage Bowl - Great Bowl & Shape
- _____ 196. A - 9" Dome Base - Dugan Vintage Bowl - Scarce Pat. & Color
- _____ 197. B - Orange Tree Powder & Lid - Very Desirable
- _____ 198. M - 7 1/2" Ruffle Spat. Ftd. Two-Flowers Bowl
- _____ 199. A - 7 3/4" Fenton Ball Ftd. Grape and Cable Bowl - Very Nice
- _____ **200. W - Floral and Grape Water Pitcher - Very Rare Pitcher**
- _____ 201. W - 6 Floral and Grape Tumblers - All Match Great - Choice
- _____ **202. G - Fenton Flowers Nut Bowl - Great - Very Scarce**
- _____ 203. M - Fenton Flowers Rose Bowl - Very Nice Example
- _____ 204. M - Low 9 3/4" 3 in 1 Peacock Tail Bowl - Scarce Size and Shape
- _____ 205. M - Ruffle Dragon and Lotus Bowl - Very Pretty
- _____ **206. G - Ruffle Fenton Peacock and Urn Bowl - Scarce Color**
- _____ 207. M - Ruffle Fenton Peacock and Urn Bowl - Pink & Blue Irid.
- _____ 208. M - 8 3/4" Ruffle Lotus and Grape Pattern - Popular Pattern
- _____ 209. M - 7" Ruffle Leaf Chain Bowl
- _____ **210. W - Fenton Flowers Rose Bowl - ? Sides Straight Up**
- _____ 211. M - Daisy and Lattice Tumblers - Choice of 5
- _____ 212. M - Orange Tree Powder Jar Base - Very Dark
- _____ 213. W.O. - Not Carnival - Hill Top Vines Pedstel Bowl
- _____ **214. I.B. - Ruffle Rib Bk. Hearts and Flowers Bowl - Super Example**
- _____ **215. Pastel - Lime - Teal - ? P.C.E. Good Luck Low Bowl - Base Glows - Rare**
- _____ **216. M - 10" N 8-Ruffle Stippled Grape and Cable Bowl - B.W. - Super**
- _____ 217. G - 9" 3 in 1 Peacock and Grape Bowl - A Beautiful Bowl
- _____ 218. M - Lattice Top Stork and Rushes Tumbler - Radium
- _____ 219. Teal - Louisa Rose Bowl - Chromium Type Irid.
- _____ 220. P.O. - Dugan Pinched Swirl Rose Bowl - Heavy Opal - Scarce
- _____ 221. G - 8 1/2" 3 in 1 Autumn Acorns Bowl - Scarce Shape
- _____ 222. A - 8 1/4" 3 in 1 Dragon and Lotus Bowl - Very Nice
- _____ 223. Red - P - N Leaf Beads Rose Bowl - Sun Flower Int. - Ox Blood Color
- _____ 224. G - 8" Spat. Ftd. Ruffled Two-Flowers Bowl - Very Scarce Color
- _____ **225. B.A. - Rd. 8 1/2" Deep Ball Ftd. Two-Flowers Bowl - May be 1 of a Kind**
- _____ **226. G - 8 1/2" Rd. Imperial Diamond Lace Bowl - May be 1 of a Kind**
- _____ **227. M - 6 1/2" Lg. Imperial Oval and Round Rose Bowl - Super & Rare**
- _____ 228. I.G. - Brocaded Palms 6 1/2" Handled Bowl - Great One
- _____ 229. G - 9 3/4" N Ruffled Grape and Cable B.W. Bowl - Scarce Color
- _____ 230. G - 9 3/4" Mlbg. Rays and Ribbon 3 in 1 Bowl - Multi-Satin
- _____ 231. A - 8 1/2" Ruffle Fenton Vintage Bowl - Multi-Satin
- _____ 232. A - 10" Mlbg. Primrose Bowl - Multi-Satin
- _____ 233. A - 8 1/2" Mlbg. 3 in 1 Blackberry Wreath Bowl - Multi-Satin
- _____ 234. A - 9" N 8-Ruffle Grape Leaves Bowl
- _____ 235. Lav. - 8 3/4" Ruffle Grape and Cable Vt. Bowl - Smooth Bk.
- _____ **236. Amber - 9" Ruffle Dragon and Lotus Bowl - Scarce Color**
- _____ **237. Blue - Cathedral Curved Star Compote - Super Multi Radium**
- _____ 238. M - Iris Goblet - Nice and Detailed
- _____ 239. M - Radium Colonial Goblet - Bug Made in Glass
- _____ 240. M - 8 3/4" Ten Mums Bowl - Round - Super - Lite Wear in Base
- _____ 241. G - 8 3/4" Ruffle Lotus and Grape Bowl - Scarce Color
- _____ 242. A - 8 1/2" N P.C.E. Grape and Cable - B.W. Ext.
- _____ 243. G - 10" 3 in 1 Mlbg. Zig Zag Bowl - Satin
- _____ 244. A - 10" 6-Ruffle Rosalind Bowl - Deep - Lite Irid.
- _____ 245. M - 7 1/2" Ruffle Fenton Grape and Cable Bowl - Dark
- _____ **246. Smoke - 9" 8-Ruffle Imperial Oval and Round Bowl - May be 1 of a Kind**
- _____ **247. M - 8 3/4" 8-Ruffle Scroll Embossed File Ext. Bowl - Dark Radium**
- _____ 248. Aqua - 2 Sides Up Blackberry Spray Hat Bowl
- _____ 249. Aqua - 6-Ruffle Blackberry Spray Hat Bowl
- _____ **250. Em. G - 9" Stippled Banded Grape and Cable Plate - Rib Ext. - Super & Rare**
- _____ 251. G - Flat 9" Spat. Ftd. Grape and Cable Plate - Blue Gr. Satin Irid.
- _____ 252. G - 9" N Grape and Cable B.W. Plate - Nice Example
- _____ 253. P - 9" N Grape and Cable B.W. Plate - Beautiful
- _____ 254. M - 9" N Grape and Cable B.W. Plate - Vt., Dark and Nice
- _____ **255. A.O. - Spat. Ftd. Stippled 3-Fruits Meander Bowl, Super Pastel - Lots Opal**
- _____ **256. A - 9" Stippled Banded 3-Fruits Plate, Rib Ext. - Great One**
- _____ **257. Pumpkin M - Ruffle Collar Base Stippled 3-Fruits Bowl - The Best**
- _____ 258. M - Ruffle B.W. Good Luck Bowl - Great One
- _____ 259. M - 7 Pc. Imperial Grape Water Set - Very Nice Set
- _____ 260. G - 8-Ruffle Bullseye and Beads N Bowl
- _____ 261. A - 8 1/4" C.R.E. Fenton Thistle Bowl - Scarce Shape
- _____ 262. P.M. - 9" Ruffle Fenton Holly Bowl - Nice One
- _____ 263. Aqua Marine or Pastel Ice Blue - Grape Arbor Tumbler - Rare Color

- _____ 264. M - Dark Strawberry Scroll Tumbler - Very Scarce
- _____ 265. **G - 10" Mlbg. 6-Ruffle Fleur De Lis Bowl - Radium - Scarce Shape**
- _____ 266. A - 9½" Mlbg. 6-Ruffle Whirling Leaves - Radium
- _____ 267. M - 10" Mlbg. 6-Ruffle Whirling Leaves - Super Satin Pink & Blues
- _____ 268. G - 9½" Mlbg. 6-Ruffle Primrose - Beautiful Radium
- _____ 269. A - 9½" Mlbg. 6-Ruffle Primrose - Radium Blue Center
- _____ 270. M - 9½" Mlbg. 3 in 1 Rays and Ribbons Bowl - Radium
- _____ 271. M - 10¼" Mlbg. 6-Ruffle Rays and Ribbons Bowl - Radium
- _____ 272. **M - 10½" Mlbg. 6-Ruffle Rosalind Bowl - Super Satin - Few Known**
- _____ 273. G - 7½" Mlbg. 6-Ruffle Little Stars Bowl - Super Satin
- _____ 274. G - 7¼" Diamond Point Columns Vase - Scarce Color
- _____ 275. M - Thistle Banana Bowl - Water Lily Ext. - Scarce Item
- _____ 276. **P - 9¾" Mlbg. Ohio Star Vase - Super & Rare**
- _____ 277. **M - 9¼" Interior Swirl Whimsey Vase - Pitcher Like w/no handle - Possible 1 of a Kind**
- _____ 278. **W - 10¼" Lined Lattice Vase - Super - Very Scarce**
- _____ 279. **W - 8¾" Diamond and Rib Vase - Super - Very Scarce**
- _____ 280. **W - N Daisy and Drape Vase - Straight Top - Super Example**
- _____ 281. **A - 14¾" Mlbg. Hobnail Vt. Mid Size Funeral Vase - Super**
- _____ 282. **A - 15⅞" Mlbg. Hobnail Vt. Mid Size Funeral Vase - Super**
- _____ 283. **G - 16" Mlbg. Hobnail Vt. Mid Size Funeral Vase - Super**
- _____ 284. **G - 14¾" Mlbg. Hobnail Vt. Mid Size Funeral Vase - Super**
- _____ 285. A - 10" 6-Ruffle Cosmos Vt. Bowl - Great Example
- _____ 286. G - 7" 6-Ruffle Fenton Vintage Bowl - Unusual Size
- _____ 287. M - 8½" N B.W. Ruffle Grape and Cable Bowl - Rich Satin
- _____ 288. Lav. - 8¾" N Grape and Cable Vt. Bowl - Smooth Ext.
- _____ 289. **Lav. 9¼" 8-Ruffle Imperial Grape Low Bowl or Plate - Radium**
- _____ 290. M - 9½" 12-Sided Fenton 3-Fruits Plate - Great Satin - No Scratches
- _____ 291. P.M. - 9" N 3-Fruits Smooth Bk. Plate - Soft Pinks - No Scratches
- _____ 292. M - 8¾" Spat. Ftd. 3-Fruits Meander Bowl - Dark - Popular Pattern
- _____ 293. M - 8½" N Collar Base 3-Fruits B.W. Bowl - Satin - No Scratches
- _____ 294. **B - 8¾" N Collar Base Stippled Rib Bk. 3-Fruits Bowl - Very Scarce Color**
- _____ 295. G - 9" - 6-Ruffle Collar Base 3-Fruits Bowl - Smooth Back - No Scratches
- _____ 296. **Vas.O. - 7¼" Spat. Ftd. Peacock and Grape Bowl - Marigold Overlay - Rare**
- _____ 297. M - Star Medallion Milk Pitcher - Dark Radium
- _____ 298. **Clam - 9" Low-Ruffle Imperial Grape Plate-Bowl - Radium**
- _____ 299. A - Tri-Corner C.R.E. Howey Comb Bowl - A Beauty
- _____ 300. **Cherry Red - 9" 8-Ruffle Fenton Vintage Bowl - Super & Rare**
- _____ 301. **A - 8¾" Ruffle Fenton Thistle Bowl - Rev. - Horlacher Adv. - Scarce**
- _____ 302. M - 9" Ruffle Imperial Pansy Bowl - Super - Base Chip
- _____ 303. M - 9" Ruffle Imperial Grape Bowl - Great Color
- _____ 304. A - 9" 3 in 1 Ribbon Tie Bowl - Scarce Color & Shape
- _____ 305. G - 8½" 3 in 1 Fenton Vintage Bowl - Scarce Shape
- _____ 306. **M - 9" 3 in 1 Mlbg. Blackberry Wreath Bowl - Great Radium**
- _____ 307. **Lav. A - N Peacocks Ruffle Rib Bk. Bowl - Multi-Elec.**
- _____ 308. P.O. - 7¼" - Dugan Ruffle Holly Bowl
- _____ 309. G - 7½" Scroll Embossed Bowl - Rd. - Radium Silver
- _____ 310. Smoke - 9" 8-Ruffle Imperial Diamond Ring Bowls - A-Radium - B-Satin
- _____ 311. **A - 8" Deep 6-Scallops Hob Star and Cut Triangle Bowl - Very Scarce**
- _____ 312. M - 6½" Shallow Rd. Hob Star and Cut Triangle Bowl - Radium
- _____ 313. M - 9½" 6-Ruffle Headdress Bowl - Radium & Dark
- _____ 314. B - 6½" I.C.S. Peacock and Dahlia Bowl
- _____ 315. **B.A. - 8½" Ped. Master Maple Leaf Berry Bowl - Rare Color - Super**
- _____ 316. M - 8½" 3 in 1 Autumn Acorns Bowl - Lot of Pink
- _____ 317. M - 9" 8-Ruffle Dragon & Lotus Bowl - Pink & Blues
- _____ 318. B - 7¼" Spat. Ftd. Ruffle Peacock and Grape Bowl
- _____ 319. M - 9" Low Ruffled Peacock and Grape Bowl - Tried to be a Plate
- _____ 320. **G - 6" 6-Ruffle Sail Boats Bowl - Great and Scarce**
- _____ 321. **P - Imperial Flute Breakfast Creamer - Little Beauty**
- _____ 322. W - 8½" Rd. Orange Tree Bowl - Pinks and Blues
- _____ 323. Clam - 8½" Rd. Orange Tree Bowl with Trunk
- _____ 324. P.M. - 4½" Vintage Grape Deep Bowl - Maker ?
- _____ 325. M - 5¼" 5-Ruffle Mlbg. Blackberry Wreath Bowl
- _____ 326. **W - 4½" Opening Imperial Frosted Block Rose Bowls - A or B - Rare Color**
- _____ 327. **P.M. - N Poppy Pickle Dish - Super Pretty**
- _____ 328. B - 6-Ruffle Open Edge Blackberry Hat Bowl
- _____ 329. M - 2-Sides Up Open Edge Blackberry Hat Bowl
- _____ 330. **Red - 6½" Ruffle 2 Row Open Edge Blackberry Basket - A Beauty**
- _____ 331. Aqua - 5¼" 2 Sides Up 2 Row Open Edge Basket - Very Pretty
- _____ 332. B - 7½" 2 Sides Up 2 Row Open Edge Blackberry Basket - Super
- _____ 333. A - Iris Low Ruffle Compote - The Best - Pinks & Blues
- _____ 334. G - Iris Goblet - Again Fine Example
- _____ 335. A - Iris Goblet - Again Fine Example
- _____ 336. **B - 6½" Cherry Chain Flat Plate - Orange Tree Ext. - Super**
- _____ 337. W - 7" Fish Scale and Beads Plate - Blues & Pinks
- _____ 338. **M - Low 11" Ball Ftd. I.C.S. Stag and Holly Bowl - Great Pink & Blues**



- _____ 339. P.O. - 8" Sipple Flower Bowl - 6-Ruffle - Lots Opal
- _____ 340. P.O. - Folding Fan C.R.E. 6-Ruffle Compote - Great - 1 1/4" of Opal - No Rust Spots
- _____ 341. P.O. - 8 3/4" 10-Ruffle Dome Base Dogwood Spray - Super - Heat Check Base
- _____ 342. **P.O. - 12" Target Vase - Super Radium Marigold Overlay**
- _____ 343. **P.O. - 10 1/4" Pulled Hoop Vase - Sam As Above - The Best**
- _____ 344. **P.O. - 9 1/4" Low Ruffle Fanciful Plate or Bowl - Super - 2" of Opal**
- _____ 345. Celeste - Concave Diamond Tumblers - Match - 4x\$
- _____ 346. A - 6 1/2" Fenton Vintage Ruffle Bowl - Nice
- _____ 347. P - 9" 8-Ruffle 3-Fruits Spat. Ftd. Meander Bowl - Heavy Irid.
- _____ 348. G - 7" N Squatty Tree Trunk Vase - 5 1/4" Top - Blues and Pinks
- _____ 349. B - 11 1/4" Plume Panels - Beautiful Example
- _____ 350. **B - 9" I.C.S. Ftd. Fan-Tail Bowl - Rarity Top of Line Irid.**
- _____ 351. **Reng. B. - P.C.E. Stippled Peacocks Bowl - Very Scarce & Beautiful**
- _____ 352. A - 9" Ruffle Fenton Holly Bowl - Pinks & Blues - No Wear
- _____ 353. G - 9" Ruffle Fenton Holly Bow - Blues & Pinks
- _____ 354. **Teal - 9 1/2" Low 3 in 1 Fenton Holly Bowl - Rare Color - Glows Black Lite**
- _____ 355. **Aqua - 9" Ruffle Fenton Holly Bowl - Rare Color**
- _____ 356. G - 8 1/2" Ruffle Spat. Ftd. Sun Flower Bowl - Meander Ext. - Scarce Color
- _____ 357. M - 8" Deep Ruffle Spat Ftd. Sun Flower Bowl - Meander Ext. Nice
- _____ 358. G - Inverted Strawberry Powder Jar w/Lid - Nick Inside Lid - Normal
- _____ 359. **G - Orange Tree Loving Cup - Radium Gold - Pink & Blue Hi-lites**
- _____ 360. **M - 10 1/2" Little Flowers Fenton Chop Plate - Rare & Gorgeous**
- _____ 361. **G - 8 3/4" P.C.E. Rib Bk. N Stippled Strawberry Bowl - Rare - Few Known**
- _____ 362. G - Leaf Beads Nut Bowl - Floral Int. - Scarce Shape & Color
- _____ 363. Lime - I.G. N Bushel Basket - Super - Mold Flaw in Hdl.
- _____ 364. M - 7 1/2" I.C.S. Smooth Int. Crackle Ext. Bowl
- _____ 365. M - 11" I.C.S. Ftd. Stag and Holly Bowl
- _____ 366. P - 9" N Strawberry B.W. Plate - Great Rainbow Irid.
- _____ 367. M - 9 1/4" Fenton Peacock and Urn Plate - Always in Demand
- _____ 368. Red - Stretch Amberina Vase - Gold Flowers - 6" H x 5" Mouth
- _____ 369. **M - 7" Circle Scroll Vase - Super and Scarce**
- _____ 370. **A.O. - 6 1/4" Daisy and Drape Vase - Flared Top - A Dandy**
- _____ 371. **G - 10 1/4" Mlbg. Hobnail Swirl Vase - Radium**
- _____ 372. **M - 6 1/2" Corn Vase - Floral Base - Very Detailed - In Big Demand**
- _____ 373. **B - 10 1/2" N Tree Trunk Vase - Beauty**
- _____ 374. **Lav. - 10 1/4" Big Basketweave Vase - Top of the Line**
- _____ 375. **B.A. - Base 9 3/8" Lined Lattice Vase - Top Ox Blood Red Color - Multi Radium**
- _____ 376. M - 8" Ftd. Wishbone Bowl - 8 Pulled in Ruffle - Different
- _____ 377. A - 8 1/2" Ftd. Wishbone 8-Ruffle Flared Bowl
- _____ 378. P - 8 1/2" Ftd. Wishbone 8-Ruffle Flared Bowl - Multi Elec.
- _____ 379. G - 8 1/2" Ftd. Wishbone 8-Ruffle Flared Bowl - Scarce Color
- _____ 380. **A - 8 1/2" Ftd. Wishbone Plate - Always Desirable**
- _____ 381. **Clam - 9 1/2" Orange Tree Plate - Radium Blues & Pinks - Great**
- _____ 382. **Amber - 9" Orange Tree Bowl - 8-Ruffle - Rare Color**
- _____ 383. M - 8 1/2" 10-Ruffle Pony Bowl - Scarce Shape - Pink & Blues
- _____ 384. A - 8 1/2" 6-Ruffle Pony Bowl - Scarce Color
- _____ 385. M - 9" 8-Ruffle Square Shape Peacock & Grape Bowl - Dark
- _____ 386. M - 8 1/2" 3 in 1 Peacock and Grape Bowl - Popular Shape
- _____ 387. A - 8 1/2" 3 in 1 Concord Bowl - Beauty - Rare Shape & Color
- _____ 388. G - 8 1/2" 3 in 1 Concord Bowl - Scarce Shape
- _____ 389. **B.A. - 8 1/2" Deep Rd. Australian Heavy Banded Diamond Bowl - Rarity**
- _____ 390. **B - 9 1/2" Lg. Fenton Butterfly and Berry Bowl - Super Multi Irid.**
- _____ 391. M - 10 1/2" 6-Ruffle Peacock Tail Bowl - Unlisted Beauty
- _____ 392. **M - Whirling Star Punch Bowl & Base - Radium - Very Scarce**
- _____ 393. **M - 11" Ruffle Imperial Long Hob Star Bowl - Believed A Fruit Bowl - 3 7/8" Base**
- _____ 394. **11 1/2" Ruffle Imperial Hob Star Fruit Bowl - 4" Base**
- _____ 395. A - Petals Compote - Very Nice Example
- _____ 396. P.M. - 6" Deep Star and File Bowl - 3 1/2" Deep
- _____ 397. A - 10" 6-Ruffle Feathered Serpent Low Bowl - Super Satin
- _____ 398. A - 9" 6-Ruffle N Greek Key B.W. Bowl - Blues & Greens
- _____ 399. M - 9" 8-Ruffle Lotus and Grape Bowl - Great Example
- _____ 400. B - 9" 8-Ruffle Lotus and Grape Bowl - Great Example
- _____ 401. **A.O. - 9" Rib Bk. 3-Fruits Plate - Rare Pastel - Lots of Opal - Banded**
- _____ 402. **I.B. - P.C.E. Rib Bk. Nippon Bowl - Lots of Blues & Pink Irid.**
- _____ 403. M - 10" N Peacock at Urn Ice Cream Bowl - Pink & Golds
- _____ 404. P - 5 3/4" N Peacock at Urn Sm. Ice Cream Bowl - Multi & Nice
- _____ 405. Smoke Lav. - 7 3/4" Spat. Ftd. Rd. Flared Stag & Holly - Very Unusual Color & Shape
- _____ 406. Lav. A - 8" Spat. Ftd. I.C.S. Stag & Holly - Also Very Unusual & Nice
- _____ 407. A - N Ftd. Wild Rose Bowl - Flat Points - Scarce Color - Great
- _____ 408. Lav. A - 8 1/2" Heavy Grape Fenton Plate - Pretty
- _____ 409. **P.O. - 9" 10-Ruffle Dome Base Dogwood Spay Bowl - The Finest**
- _____ 410. M - 7" 6-Ruffle Lions Bowl - Dark and Nice
- _____ 411. P - 10" 8-Ruffle Wild Strawberry Bowl - Beautiful
- _____ 412. B - 13 1/2" April Showers Vase - Pl. Int. Super Radium - Base Bruise
- _____ 413. P - 5" Imperial Morning Glory Vase - Super Little Vase - 3" Top

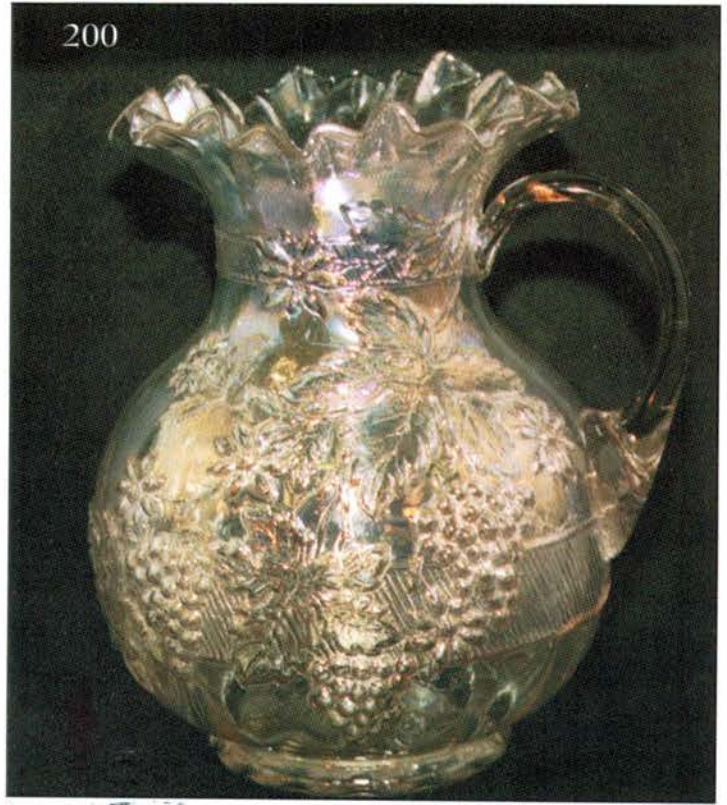
- _____ 414. M - 5" Imperial Morning Glory Vase - Radium - 4" Top
- _____ 415. **B - Rose Show 9½" Plate - Great - Near Elec. Blue**
- _____ 416. **A.O. - Rose Show 9" Ruffle Bowl - Blues, Pinks & Golds**
- _____ 417. **M - Rose Show 9" Ruffle Bowl - Dark - Lots Pink & Blue Hi-Lites**
- _____ 418. Clear - 9" Frosted Block Plate - Pink, Gold & Blue Hi-Lites
- _____ 419. Smoke - Star Spray Bowl w/A Stand - Super Irid. - 6"
- _____ 420. M - 6" Star Spray Bowl - Super Irid.
- _____ 421. **M - Cambridge Near Cut Tankard Cream Pitcher - Rare**
- _____ 422. **M - 11" Oval and Round Chop Plate - Rare - Blues, Pinks & Golds**
- _____ 423. M - 9¼" Prisms Panels Bowl Round - Pat. ?
- _____ 424. **G - 9" Lotus and Grape Plate - Rare - Greens, Golds & Pinks**
- _____ 425. **B - 9" Lotus and Grape Plate - Rare - Blues, Golds & Pinks**
- _____ 426. B - 9¼" Heart and Vine Plate - Gold, Pink Hi-Lites - Scarce
- _____ 427. B - 9" Ruffle Ribbon Tie Plate - 1¼" Off Table - Very Nice
- _____ 428. Russet - 9" Lg. Ruffle Panther Bowl - Pink & Blue Irid. - Very Neat
- _____ 429. **P.M. - 10¼" 3 in 1 Seaweed Bowl - Very Scarce - Satin Irid.**
- _____ 430. **P - N Raspberry 7 Pc. Water Set - A Beautiful Set**
- _____ 431. **Celeste B - Ruffle Double Stem Roses Bowl - Great Color Bowl**
- _____ 432. **A - 7¾" N Fruits and Flowers Hand Grip Plate - Great**
- _____ 433. **M - 7¼" Horses' Head Plate - Multi Radium**
- _____ 434. M - 8" Ftd. J.I.P. Horses' Head Bowl - Dark
- _____ 435. Reddish Amber - 6¼" Round Flared Horses' Head Bowl - Unusual Color - Collar Base
- _____ 436. B - 7¼" 8-Ruffle Ftd. Horses' Head Bowl - Looks Square
- _____ 437. **P - 9" Good Luck Plate - B.W. - Flat - Multi Satin - Blues, Purples & Greens**
- _____ 438. **B - Ruffled Rib Back Good Luck Bowl - Super Elec.**
- _____ 439. **P.M. - Ruffled Rib Back Good Luck Bowl - Super Pinks and Blues**
- _____ 440. B - P.C.E. Rib Back Good Luck Bowl - Always in Demand
- _____ 441. A - 8½" Twigs Tall Bud Vase - Color Top to Bottom
- _____ 442. M - 8⅞" Twigs Tall Bud Vase - Color Top to Bottom
- _____ 443. M - 9" Beaded Bullseye Vase - 5¼" Top - Super Radium
- _____ 444. I.G. - 8" N Drapery Vase
- _____ 445. Clam. - 6¼" Frosted Block Vase w/Pedestal - Scarce
- _____ 446. **M - 7¼" Jenkins Sun Flower and Diamond Vase - Rare - Very Pretty**
- _____ 447. **M - 10¼" Jenkins Cut Flowers Vase - Rich Radium Irid**
- _____ 448. G - Teal - Logan Berry Imperial Vase - Very Nice
- _____ 449. M - Mini Blackberry Compote - Pumpkin - Base Chip on Point - Minor
- _____ 450. P.O. - 7¼" Oval Ruffle Golden Honeycomb Bowl
- _____ 451. P.O. - 7" 6-Ruffle Bells and Beads Bowl
- _____ 452. **Smoke - 8" Deep Rd. Acanthus Bowl - Super & Scarce**
- _____ 453. G - N Fern Compote - Soft Blue Satin Irid.
- _____ 454. B - 6¼" 6-Ruffle Mirrored Lotus Bowl - Very Scarce Pat.
- _____ 455. Ox Blood Red - 7¼" N Dome Base Octet Bowl - Ruffled - Rare
- _____ 456. **Amberina - 8" I.C.S. Dragon and Lotus Bowl - Rich Pink & Blue Irid.**
- _____ 457. **Persian Blue - 8½" 8-Ruffle Fenton Vintage Bowl - Scarce - Very Under Valued**
- _____ 458. Vas. Opal - 9" Collar Base Peacock and Grape Bowl - Scarce Bowl
- _____ 459. Vas. - 6½" I.C.S. - Leaf Chain Bowl - Few Known
- _____ 460. **Vas. - 10¼" Plume Panels Vase - May Be One of a Kind**
- _____ 461. M - 8" I.C.S. Coral Bowl - Scarce Pattern
- _____ 462. M - 8¼" 3 in 1 Coral Bowl - Scarce Shape
- _____ 463. M - 8½" Smooth Bk. N Three-Fruits Plate - Pretty
- _____ 464. Teal - 8" Ruffle Shell and Sand Bowl
- _____ 465. M - 7¼" Round Flared Shell and Sand Bowl
- _____ 466. B - P.C.E. N Stippled Grape and Cable Bowl - Very Nice - Heat Ck. Base
- _____ 467. B - Ruffled Fenton Peacock and Urn Bowl - Thick Green & Blues
- _____ 468. B - N Bushel Basket - Very Pretty & Popular
- _____ 469. **W - 11¼" I.C.S. Persian Garden Bowl - Super Blues & Pinks**
- _____ 470. **Ox Blood Red - 8¼" Dugan Royal Luster Candle Stick - Rare**
- _____ 471. **B - N Stipple Peacocks Plate - Rib Bk. - Stretch Gold, Blue & Purple Hi-Lites**
- _____ 472. **P - N Peacocks Plate - Multi Elec. Blue, Purple & Golds**
- _____ 473. **M - N Peacocks Plate - Super Pinks & Golds - G. Hi-Lites Center**
- _____ 474. **Pastel I.G. - N Peacocks Plate - Golds, Silver, Purple Hi-Lites Center**
- _____ 475. **B - N Stipple P.C.E. Peacocks Bowl - Striking Multi-Irid.**
- _____ 476. M - 8⅞" Rib and Panel Jug Shape Vase
- _____ 477. M - Dia. and Sunburst Decanter - Normal Chip on Stopper - Super Color
- _____ 478. M - Dia. and Sunburst Wines - 2x\$
- _____ 479. Red - 2-Row Open Edge Blackberry Ruffled Basket
- _____ 480. B - Nugget - 4¼" Handle Jug
- _____ 481. Clam - 10½" 6-Ruffle Cherry Chain Bowl - Nice Bowl
- _____ 482. **M - 5" Tall Washboard Pitcher - Fully Irid. - Rare**
- _____ 483. **M - Flashed Novelty Canoe - Scarce Mini**
- _____ 484. G - 6½" Round Near Cut Strawberry Bowl - Radium Blues
- _____ 485. Clam - Smooth Panels Rose Bowl - Ruffle Top - 6¼" Dia.
- _____ 486. Clam - Panel Nuart Elec. Lamp Shades
- _____ 487. M - Polo Ashtray
- _____ 488. G - 8¼" Mayan Bowl - Rd. - 1¼" Off Table - Radium Silver
- _____ 489. G - 9¼" 3 in 1 Coin Dot Bowl - Very Nice Example
- _____ 490. M - Ranger Sugar or Jam Jar w/Lid

(NOTE: Approx. 80 pcs. sold at end of auction not listed.)

281 282 283



200



THANK YOU

WE APPRECIATE YOUR BUSINESS! BOTH BUYER AND SELLER - GIVE ME A CALL WHEN YOU'RE READY FOR A SALE!

Mickey Reichel

MICKEY REICHEL
AUCTION COMPANY

DIRECT MAIL TO:
516 THIRD STREET
BOONVILLE, MO
65233



First Class Mail

LEE MARKLEY
PO BOX 306
MENTONE, IN 46539-0306



"EXCITEMENT BUILDS AS THE CROWD GATHERS AT THE MICKEY REICHEL AUCTION COMPANY!"