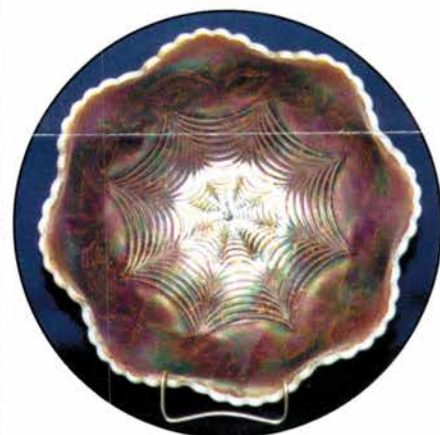
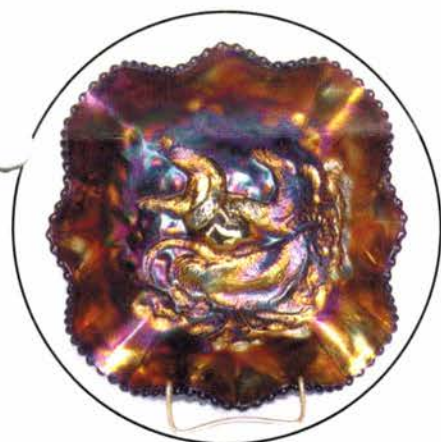


**TEXAS
CARNIVAL GLASS CLUB CONVENTION**

AUCTION

SATURDAY, FEBRUARY 15, 1997 -- 9:30 A.M.



**Hotel Sofitel - Greenspoint
Houston, Texas
(713) 445-9000 for reservations**

Texas Auctioneer License No. 10758

Seeck Auctions

JIM and JAN SEECK

515-424-1116

Texas Club Convention Auction
SATURDAY, FEBRUARY 15, 1997 - 9:30 A.M.
Hotel Sofitel at Greenspoint -- Houston, Texas
 (Take the Imperial Valley Exit off Beltway 8)

The best of Texas and the whole country will get together at the Texas Carnival Glass Club Convention! This years auction is the private collection of Joe & Polly Kambitch. This collection features many rarities, some with minor damage, and some with the finest color we have ever sold. Don't forget the hatpins that they collected -- Wonderful! There are 30 pieces of red and 80 plates, plus much more!

Texas Carnival Glass Club Convention Information: Contact President Kathy Wick at 409-885-4941.

Preview: Saturday, February 15th 7:30 a.m.

8.25 % SALES TAX WILL BE CHARGED -- Please bring your resale tax number with you.

WRITE-IN BID POLICY

1. Write-in bids will be accepted by sending the numbers of the item(s) desired and the amount bid on each to:
Seeck Auctions, PO Box 377, Mason City, Iowa 50402.
2. If known by Auction Company, bids may be done over the telephone. (515)424-1116.
3. There is a \$5 handling charge for each successful bid. Shipping and insurance charges are additional.
4. Bidders will be notified by a phone call if their bid(s) are successful. This call will be made 1 - 3 days after the auction is over.
5. Please have all bids in by Thursday, February 6th. All bids (by mail or phone) after this date may not be carried out.
6. If you do not receive an item that sold for less than your bid, assume we cancelled your bid because the piece of glass had below average color, manufacture problem, damage or was not listed correctly.
7. To receive price lists send: \$20 -- for this auction and next 7 auctions
 \$5 -- for only this auction or individual auction (please specify)

Send to the above address.

- ___ 1. Singing Birds tumblers (2) - green - choice
- ___ 2. Flowering Dill JIP CRE hatshape - marigold - nice
- ___ 3. Peacock Tail round sauce - blue
- ___ 4. Pig bank - marigold
- ___ 5. Strawberry PCE bowl w/BW back - marigold
- ___ 6. Cut Flowers 10" vase - marigold
- ___ 7. Petal & Fan ruffled sauce - peach opal
- ___ 8. Small ftd Shell - green
- ___ 9. Cosmos & Cane butterdish bottom - white
- 1500 10. Stippled Three Fruits 9" plate w/ribbed back - aqua opal - extremely rare & desirable, the opal paints the leaves on this plate, unique & pretty
- 700 11. Stippled Three Fruits 9" plate w/ribbed back - blue - electric & super, very rare & desirable
- 350 12. Stippled Three Fruits 9" plate w/ribbed back - amethyst - nice
- ___ 13. Stippled Three Fruits 9" plate w/ribbed back - purple - pretty, has minor chip on edge
- ___ 14. Stippled Three Fruits 9" plate w/ribbed back - marigold - nice
- ___ 15. Holly & Berry ruffled bowl - peach opal - pretty!
- ___ 16. Panelled Dandelion 7 pc. tankard water set - marigold - only water set in entire

sale, here's your chance water set collectors

- ___ 17. Panelled Dandelion tumblers (2) - marigold - choice
- 1900 18. Coin Dot ruffled bowl - red - extremely rare bowl w/cherry red color, nice!
- ___ 19. Hobstar & Fruit 2 sides up dish - peach opal - scarce piece
- 675 20. Good Luck 9" plate w/BW back - green - very nice example & scarce
- ___ 21. Good Luck 9" plate w/BW back - amethyst - very pretty & scarce
- ___ 22. Good Luck 9" plate w/BW back - marigold - very scarce & desirable, nice
- ___ 23. Grape Delight nut bowl - purple - pretty irid.
- ___ 24. Grape & Cable 6" handgrip plate - purple
- 3050 25. Farmyard square ruffled bowl - purple - very pretty multi-color irid., rare shape, has insignificant nick on outer edge
- ___ 26. Daisy Chain gas lamp shade - marigold
- 900 27. Lotus & Grape card tray shaped bon bon - red slag - very nice w/pretty irid.
- ___ 28. Pinecone 6" saucer shaped plate - amethyst - nice
- ___ 29. Pinecone 6" saucer shaped plate - marigold - nice, pinpoint on edge

- ___ 30. Fenton's Grape & Cable ball ftd ruffled bowl - celest blue - nicks on backside of edge
- ___ 31. Constellation compote - white
- 300 32. Twigs JIP crimped edge miniature vase - purple - very rare & desirable, extremely pretty, neat shape
- ___ 33. Apple Blossom Twigs 9" plate - blue - scarce
- 1950 34. Finecut & Roses rosebowl - aqua opal - pastel & pretty, very, very rare rosebowl, a must for all rosebowl & aqua opal collectors
- ___ 35. Finecut & Roses rosebowl - white - scarce color & pretty, normal foot chip
- 425 36. Finecut & Roses rosebowl - ice blue - pretty & nice
- ___ 37. Finecut & Roses rosebowl - green
- ___ 38. Finecut & Roses rosebowls (2) - amethyst - choice
- ___ 39. Finecut & Roses rosebowl - lavender - pretty, heat check in foot
- ___ 40. Finecut & Roses rosebowl - marigold - foot chip
- 750 41. Peacock & Grape spt ftd bowl - red - very nice example, as pretty as they get, amberina in feet
- ___ 42. Rococco vase - smoke - pretty
- ___ 43. Rococco vase - marigold
- 1700 44. Poppy Show 9" plate - green - stunning irid., has typical chip in pattern, extremely rare
- 2100 45. Poppy Show 9" plate - electric blue - fantastic irid. on this rare plate, base has been buffed
- 950 46. Poppy Show 9" plate - purple - a very pretty example, does have chip on base
- 1100 47. Poppy Show 9" plate - ice blue - frosty & pretty, very rare & desirable
- 700 48. Poppy Show 9" plate - white - a very good example, flat
- 1600 49. Poppy Show 9" plate - marigold - super, dark & beautiful
- ___ 50. N's Peacock at Urn flat IC sauce - pretty, some may call it a plate
- ___ 51. Stippled Rays 6" plate - red - extremely rare plate, has silver & gold irid., a must for your red collection
- ___ 52. Stippled Rays 6" plate - marigold
- ___ 53. Two Flowers ftd ruffled sauce - aqua - pretty, scarce color
- ___ 54. Cosmos & Cane spittoon shaped rosebowl - white - very rare but is cracked
- 650 55. Two Flowers chop plate - marigold - very scarce plate & nice
- ___ 56. Wild Strawberry 7" handgrip plate - purple - super pretty plate
- ___ 57. Wild Strawberry 7" handgrip plate - green
- ___ 58. Wild Strawberry 7" handgrip plate - marigold - nice
- 1500 59. Butterfly & Tulip square ftd ruffled bowl - purple - very nice, highly desirable, pretty
- ___ 60. Miniature Blackberry compote - green - nicks on base
- ___ 61. Miniature Blackberry compote - marigold
- ___ 62. Miniature Blackberry compote - blue
- 2950 63. Little Flowers 10" IC shaped bowl - red - cherry red color, super, super piece of glass
- ___ 64. Lions deep round bowl - blue - chip on collar base
- ___ 65. Lions deep round bowl - marigold - pretty
- 1600 66. Hearts & Flowers compote - green - extremely rare color, very pretty irid., as nice as they get
- 575 67. Hearts & Flowers compote - blue - also very pretty, has red irid.
- 400 68. Hearts & Flowers compote - purple - scarce color, nice
- 500 69. Hearts & Flowers compote - aqua opal - butterscotch & pretty
- 300 70. Hearts & Flowers compote - marigold - dark & pretty
- ___ 71. M'burg Vintage IC shaped bowl w/Hobnail back - green - satin, extremely rare, has heat checks in base
- ___ 72. Compote vase - green
- ___ 73. Small Ribb compote vase - green
- ___ 74. Ugly Bug hatpin - purple - extremely rare, named by Polly, p. 143 - Reynolds book, super hatpin!
- ___ 75. Sunflower hatpin - white - scarce
- ___ 76. Circled Basketweave hatpins (3) - purple - choice
- ___ 77. Top of the Morning Variant hatpins (2) - purple - choice
- ___ 78. Butler's Mirror hatpin - purple
- ___ 79. Iridescent hatpins w/metal decorations (4) - choice
- ___ 80. Moire Taffeta hatpin - purple
- 700 81. Town Pump - purple - very pretty example for this scarce classic
- ___ 82. Petal & Fan CRE 6" plate - purple - very pretty and scarce
- 800 83. M'burg Courthouse IC shaped bowl - amethyst - very hard to find in this shape, radium & nice
- ___ 84. Ten Mums ruffled bowl - amethyst - pretty

85. Ten Mums ruffled bowl - green - nice
86. Cambridge Near Cut Cologne bottles (2) - green - has original clear stoppers, scarce, choice
- 1800 87. Dragon & Lotus IC shaped bowl - red - cherry & very scarce, nice
88. Flute toothpick - purple - buffed base
89. Flute toothpick - green
90. Flute toothpick - marigold
91. Orange Tree 9" plate - blue - super plate, very desirable
92. Orange Tree 9" plate - marigold - dark & fantastic
93. Vintage 7" plate - green
94. Vintage 7" plate - blue
95. Vintage 7" plate - marigold - chip on back edge
96. Holly JIP CRE hat shape - red - very rare shape
97. Greek Key 9" plate w/BW back - marigold - super pretty and flat. minor pinpoint on mold line of base
98. Swan salt - white - very rare color, minor nick
99. Swan salt - pink
100. Swan salt - peach opal - very scarce & desirable
101. Swan salt - purple - scarce, nice
102. Swan salt - celest blue
103. Swan salt - ice green
104. Swan salt - vaseline opal - not carnival
105. Lions 7" plate - marigold - very rare plate & nice, a hard one to get for small plate collectors
106. Drapery rosebowl - aqua opal - very nice
107. Central Shoe Store adv. handgrip plate - amethyst - very rare & desirable, nice
108. Orange Tree loving cup - green - handle damage, pretty
109. Apple Blossom Twigs smooth edge ruffled bowl - peach opal - pretty
- 1600 110. Illinois Soldiers & Sailors 7" plate - marigold - super pretty, extremely rare & desirable
- 1800 111. Illinois Soldiers & Sailors 7" plate - blue - also super pretty, rare & desirable
112. Grapevine Lattice 6" plate - marigold
113. Heavy Webb flared out bowl - peach opal - extremely rare & desirable piece, not many of them known
114. Heavy Webb deep round bowl - peach opal - also extremely rare, only one I've seen in this shape, two in one auction!
115. Good Luck PCE bowl w/ribbed back - marigold - fabulous color & irid.
- 1500 116. Stag & Holly spt ftd ruffled bowl - red - rare & desirable, cherry red in color, nice
117. Little Flowers 6" plate - light vaseline - when put to a black light it glows, rare
118. Zippered Loop lamp, 9 1/2" tall, 5 1/2" base - marigold
119. Basketweave Open Edge ruffled basket - red - nice
- 1900 120. Rose Show 9" plate - green - super irid. & flat, extremely rare & desirable, minor nick on base
- 550 121. Rose Show 9" plate - lavender - minor buffing on roses, super irid., a really pretty plate!
- 1300 122. Rose Show 9" plate - blue - super! very, very pretty
- 575 123. Rose Show 9" plate - purple - pretty, chips in rose
- 575 124. Rose Show 9" plate - amethyst - pretty, nicks on base
- 1050 125. Rose Show 9" plate - marigold - beautiful yellow irid., a great one!
- 300 126. Rose Show 9" plate - white - base nick
127. Strawberry 9" plate w/BW back - green
128. Strawberry 9" plate w/BW back - amethyst
129. Fanciful 9" low ruffled bowl - purple - super irid.
130. Fanciful 9" ruffled bowl - peach opal
131. Fanciful 9" ruffled bowl - white - pretty
- 350 132. Fancy Beetle hatpin - purple - very rare hatpin
133. Whirling Hearts hatpin - amber - we named this one, neat
134. Star of David & Diamonds hatpin - purple
135. Throw Pillow haptin - purple
136. Six Plums hatpins (2) - purple - choice
137. Six Plums Variant 1 hatpin - purple
138. Six Plums Variant 2 hatpin - purple
139. Sphere hatpin - purple
140. Coolie Hat hatpin - purple
141. Diamond Sphere hatpin - purple
142. Wishbone ftd 9" plate - marigold - extremely rare & pretty
143. Wishbone ftd 9" plate - amethyst
144. Orange Tree ruffled bowl - red - has minor nicks on edge & is dark
145. Waterlily ftd ruffled sauce - red - very nice, rare
146. Waterlily ftd ruffled sauce - green - pretty green color w/nice irid.
147. Waterlily ftd ruffled sauce - vaseline - marigold overlay
148. Waterlily ftd ruffled sauces (2) - blue -

choice

- ___ 149. Waterlily ftd ruffled sauce - marigold
- 2700 ___ 150. **Cherry Circles round shaped bon bon - red - cherry red color w/red irid., fabulous piece of rare glass, spot of epoxy on one point**
- ___ 151. Bells & Beads tri-cornered crimped edge bowl - peach opal - unusual shape, nice
- ___ 152. Heart & Vine 9" plate - blue - pretty & scarce
- ___ 153. Persian Medallion 6" plate - blue - very, very pretty
- ___ 154. Persian Medallion 6" plate - marigold
- ___ 155. Hearts & Flowers PCE bowl - ice blue - very rare w/PCE, minor nick on base
- ___ 156. Fishscale & Beads ruffled bowl - white
- ___ 157. Panther ftd ruffled sauce - red - super example, as pretty as they get
- ___ 158. Panther ftd ruffled sauce - red - very nice, a little deeper
- ___ 159. Cosmos & Cane large round bowl - white
- ___ 160. Peacocks PCE bowl w/ribbed back - blue - cracked
- ___ 161. Fishnet epergne - peach opal - scarce, nice
- ___ 162. Stippled Three Fruits spt ftd ruffled bowl - ice blue - very rare & desirable, pretty
- ___ 163. Stippled Three Fruits spt ftd ruffled bowl - aqua opal - scarce & nice
- ___ 164. Dugan Cherries 6" ruffled sauce - peach opal - extremely flat, almost a plate
- ___ 165. Stippled Peacocks 9" plate - blue - very nice & scarce
- ___ 166. Beaded Cable rosebowl - white - scarce color, nice
- ___ 167. Beaded Cable rosebowl - aqua opal - pretty
- ___ 168. Beaded Cable rosebowl - blue - nice
- ___ 169. Beaded Cable rosebowl - marigold - nice
- ___ 170. Rose Show ruffled bowl - aqua opal - pastel & super, lots of opal, a great bowl!
- ___ 171. Petal & Fan large ruffled bowl - peach opal - minor rough spot on edge
- ___ 172. Fine Rib 9 1/2" vases (2) - red - both have very minor rough spots, scarce, choice
- ___ 173. Inverted Strawberry powder jar - green - pretty!
- ___ 174. Orange Tree standard size mug - red - very nice
- ___ 175. Round Up low ruffled bowl - purple - super!!
- ___ 176. Round Up low ruffled bowl - peach opal - also super
- ___ 177. Six Petals ruffled crimped edge bowl - peach opal
- ___ 178. Strawberry hatpin - green - very rare
- ___ 179. Belle hatpin - purple
- ___ 180. Border Path hatpin - purple
- ___ 181. Flying Bat hatpin - purple
- ___ 182. Rooster hatpins (6) - lavender, amber, emerald green, white, blue, powder blue - choice
- ___ 183. Triad hatpin - purple
- ___ 184. Big Butterfly hatpins (2) - purple - choice
- 3500 ___ 185. **Concord 9" plate - amethyst - super pretty example, very, very rare & desirable**
- 1800 ___ 186. **Concord 9" plate - green - extremely rare & desirable, must for plate collectors**
- ___ 187. Ski Star large ruffled bowl - peach opal
- 1400 ___ 188. **Vintage IC shaped bowl - red - cherry red, very scarce**
- ___ 189. Cosmos & Cane spooner - honey amber - pretty
- ___ 190. Horse Medallion nut bowl - red slag - very rare & nice, lots of slag
- ___ 191. Horse Medallion nut bowl - vaseline - very scarce
- ___ 192. Persian Garden fruit bowl - purple - very rare item, nice
- ___ 193. Four Flowers 6" plate - peach opal
- ___ 194. Garden Path Variant chop plate - amethyst - very rare & nice, some epoxy on base, but irid. is pretty
- ___ 195. Folding Fan crimped edge compote - peach opal - chip on edge
- ___ 196. Holly ruffled compote - red - very pretty & rare, has epoxy on back of ruffle
- ___ 197. Wreath of Roses rosebowl - amethyst - scarce color
- ___ 198. Wreath of Roses rosebowl - marigold
- ___ 199. Horse Medallion 7" plate - powder blue - only one I've seen like it, has an amethyst look, nice
- ___ 200. Horse Medallion 7" plate - blue - very rare, super
- ___ 201. Horse Medallion 7" plate - marigold - nice
- ___ 202. Stippled Grape & Cable "Old Rose Distillery" 9" plate w/ribbed back - green - pretty, scarce
- ___ 203. Raindrops 3 in 1 edge bowl - peach opal
- ___ 204. Grape & Cable hatpin holder - emerald green - fabulous irid., as pretty of one that we have ever sold
- ___ 205. Grape & Cable hatpin holder - amethyst - nice!
- ___ 206. Grape & Cable hatpin holder - marigold - dark & spectacular, minor roughness on toe but who cares!
- ___ 207. Ski Star 6" crimped edge plate - peach opal

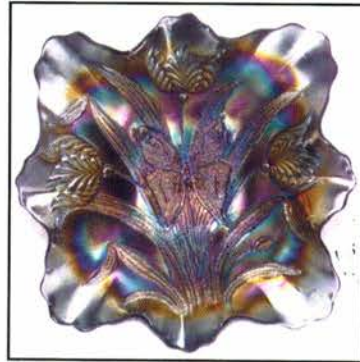
- scarce, pretty

- ___ 208. **Buzz Saw small size cruets (2) - green - nice, scarce, choice**
- ___ 209. Inverted Thistle spooner - amethyst
- ___ 210. Inverted Thistle spooner - green
- ___ 211. **Captive Rose 9" plate - green - spectacular, very, very pretty & rare**
- ___ 212. **Captive Rose 9" plate - blue**
- ___ 213. Stag & Holly large size ruffled bowl - marigold
- ___ 214. **Acorn ruffled bowl - red - very nice**
- ___ 215. Pinecone 7" plate - blue
- ___ 216. Double Stemmed Rose dome ftd 9" plate - white - frosty & pretty
- ___ 217. **Fanciful 9" plate - blue - scarce**
- ___ 218. Fanciful 9" plate - marigold - pretty
- ___ 219. **Hearts & Flowers 9" plate - ice blue - extremely rare plate, nice**
- ___ 220. **Hearts & Flowers 9" plate - green - flat & pretty, as nice as these get, probably more scarce than the ice blue**
- ___ 221. **Hearts & Flowers 9" plate - purple - very rare & desirable**
- ___ 222. **Hearts & Flowers 9" plate - marigold - very nice & rare**
- ___ 223. Grape & Cable Variant 9" plate w/BW back - purple - pretty
- ___ 224. Grape & Cable Variant 9" plate w/BW back - marigold
- ___ 225. **Orchid hatpin - purple**
- ___ 226. **Piazza hatpin - purple**
- ___ 227. Unknown hatpin - marigold
- ___ 228. Four of Hearts hatpin - purple
- ___ 229. Spiral hatpin - purple
- ___ 230. Faceted Rectangle - purple
- ___ 231. Hollow Dark hatpin - purple
- ___ 232. Lancet Arch hatpin - purple
- ___ 233. Faceted Oval hatpin - purple
- ___ 234. Faceted Dome hatpin - purple
- ___ 235. Basketflower hatpin - purple
- ___ 236. HOACGA hatpin - red
- ___ 237. Carnival buckles or clasps (5) - purple - choice
- ___ 238. Misc. Carnival Glass purses, small to large - choice
- ___ 239. Nippon PCE bowl - ice blue - pretty
- ___ 240. Flowers & Frames tri-cornered dome ftd bowl - peach opal - super nice
- ___ 241. **Leaf Chain 7" ruffled bowl - red - a very nice example**
- ___ 242. Fenton's Grape & Cable spt ftd 9" plate - blue - pretty
- ___ 243. **Peacock Tail 6" plate - marigold - very nice for these, extremely rare**
- ___ 244. **Victorian large ruffled bowl - purple - scarce & desirable**
- ___ 245. **Holly ruffled bowl - red - very rare & desirable, gold & silver highlights**
- ___ 246. **Hattie chop plate - green - very scarce item**
- ___ 247. Grape & Cable powder jar - green - super, super pretty, minor nick on bottom bead
- ___ 248. **Holly 9" plate - green - very rare plate, very pretty**
- ___ 249. **Holly 9" plate - blue - outstanding**
- ___ 250. Holly 9" plate - marigold - stretchy & nice
- ___ 251. Persian Medallion 7" plate - blue - much more scarce than people think
- ___ 252. **Embroidered Mums ruffled bowl - ice blue - scarce & desirable, a nice Northwood piece**
- ___ 253. **Embroidered Mums ruffled bowl - blue - very pretty, also scarce**
- ___ 254. **Embroidered Mums ruffled bowl - purple - nice**
- ___ 255. Wishbone & Spades ruffled sauce - peach opal
- ___ 256. **Butterfly & Berry ftd sauce - red - very, very rare, not many around**
- ___ 257. M'burg Hobnail rosebowl - marigold - chip on base
- ___ 258. M'burg Hobnail Swirl rosebowl - marigold - very scarce
- ___ 259. **Poinsettia & Lattice ruffed ftd bowl - purple - very pretty, scarce**
- ___ 260. Fan gravy boat - peach opal
- ___ 261. **Wishbone & Spades 6" plate - purple - pretty, scarce**
- ___ 262. **Hearts & Flowers ruffled bowl - ice green - super, super pretty, very rare**
- ___ 263. M'burg Grape Wreath 3 in 1 edge sauce - green - radium
- ___ 264. Rococco small ruffled bowl, made from vase - smoke
- ___ 265. Persian Garden large size IC bowl - peach opal - chip off point, scarce
- ___ 266. Blackberry Spray ruffled hat - red - super! has epoxy chip on backside
- ___ 267. Grapevine Lattice ruffled bowl - white
- ___ 268. **Persian Garden 6" plate - purple - scarce & nice**
- ___ 269. Persian Garden 6" plate - peach opal - also hard to find & nice
- ___ 270. Persian Garden 6" plate - marigold
- ___ 271. Peacocks ruffled bowl - aqua opal - light opal but pretty, chip off point
- ___ 272. Cherry Chain 6" plate - blue - pretty
- ___ 273. Cherry Chain 6" plate - marigold

- ___ 274. Dugan Cherries ftd ruffled banana boat shaped whimsey - peach opal - pretty
- ___ 275. **Formal hatpin holder - purple - very rare item, pretty**
- ___ 276. Inverted Strawberry spittoon - green - very rare, has epoxy on edge
- ___ 277. **Corn vase - ice green**
- ___ 278. Ten Mums 3 in 1 edge ftd bowl - marigold - pumpkin & pretty, very rare ftd
- ___ 279. **Orange Tree hatpin holder - green - chip on foot, a common problem, pretty**
- ___ 280. **Orange Tree hatpin holder - blue - very nice!**
- ___ 281. Orange Tree shaving mug - marigold
- ___ 282. Orange Tree standard size mug - marigold
- ___ 283. **Holly ruffled hatshape - red - cherry & super!**
- ___ 284. **Peacock & Grape spt ftd 9" plate - green - very scarce plate**
- ___ 285. Lattice & Daisy ruffled hatshape - peach opal - lots of opal, epoxy on base
- ___ 286. **Stag & Holly lg IC shaped bowl - vaseline - very rare color**
- ___ 287. **Wishbone ruffled ftd bowl - ice blue - very pretty & rare**
- ___ 288. Nautilus sugar bowl - peach opal - minor nick on base
- ___ 289. **Vintage fernery - red - very rare piece, not many around**
- ___ 290. Three Fruits 9" plate w/BW back - green
- ___ 291. Fruits & Flowers 7" plate - purple - nice
- ___ 292. **Leaf & Beads rosebowl - aqua opal - pastel & pretty**
- ___ 293. Leaf & Beads rosebowl - aqua opal - butterscotch & pretty
- ___ 294. Good Luck ruffled bowl w/ribbed back - blue - very pretty!
- ___ 295. Pinecone 6" plate - green - scarce
- ___ 296. Grape & Cable sweatmeat - purple - a nice one!
- ___ 297. Two Flowers IC shaped ftd bowl - vaseline - super pretty! has buff on back of one point
- ___ 298. **Sun's Up hatpin - purple - very rare**
- ___ 299. **Sun's Up hatpin - lavender - also rare**
- ___ 300. Waves hatpin - chocolate glass
- ___ 301. Scarab Shell hatpin - purple - edge chip
- ___ 302. Turban hatpins (2) - purple - choice
- ___ 303. Grape Cluster hatpin - lavender
- ___ 304. Veiling & Beads hatpins (3) - purple - choice
- ___ 305. Tufted Throw Pillow - purple
- ___ 306. Embroidered Circles hatpin - purple
- ___ 307. Garden Path hatpins (2) - purple - choice
- ___ 308. Butterflies hatpin - purple
- ___ 309. Misc. hatpins - purple - choice
- ___ 310. **Stippled Rays ruffled bowl - red - cherry & super, a nice bowl**
- ___ 311. Fruits & Flowers 7" handgrip plate - purple - nice
- ___ 312. **Sailboats IC shaped sauce - red - very rare in this shape, very pretty blue irid.**
- ___ 313. Cosmos ruffled bowl - amethyst - scarce color
- ___ 314. Circle Scroll 2 sides up hatshape - purple
- ___ 315. **Autumn Acorn 9" plate - green - extremely rare plate & pretty**
- ___ 316. Drapery candy dish - ice blue
- ___ 317. **Daisy Cut bell - marigold - scarce & desirable**
- ___ 318. August Flower gas lamp shade - marigold
- ___ 319. **Twigs miniature vase - purple -rare, nice!**
- ___ 320. **Round Up 9" plate - blue - pretty, scarce**
- ___ 321. Persian Medallion bon bon - red - scarce but cracked
- ___ 322. Garden Path Variant 6" plate - peach opal - very scarce plate & pretty
- ___ 323. **Five pads of Buttons, many are outstanding - choice**
- ___ 324. **Peacocks 9" plate w/ribbed back - ice blue - exceptional example, incredible!**
- ___ 325. **Peacocks 9" plate w/ribbed back - green - outstanding irid. on this rare plate**
- ___ 326. **Peacocks 9" plate w/ribbed back - lavender - very rare color & super!**
- ___ 327. **Peacocks 9" plate w/ribbed back - purple - very scarce & desirable**
- ___ 328. **Peacocks 9" plate w/ribbed back - marigold - dark & super!**
- ___ 329. **Peacocks 9" plate w/ribbed back - ice green**
- ___ 330. **Peacocks 9" plate w/ribbed back - white**
- ___ 331. Cherries crimped edge 6" plate - purple - pretty
- ___ 332. **Fenton's Grape & Cable deep round bowl - red - scarce**
- ___ 333. Garden Path Variant ruffled sauce - peach opal
- ___ 334. **M'burg Deep Grape flared out compote - green - satin & super, extremely rare & desirable, a great piece for the end of the sale**
- ___ 335. Farmyard ruffled bowl - red - new, sorry Floyd!
- ___ 336. Farmyard plate - purple - new, sorry Floyd!
- ___ 337. 13 Misc. new pieces - choice
- ___ 338. Misc. Carnival Glass video tapes - choice
- ___ 339. Misc. Carnival Glass books, almost anyone known - choice



Seeck Auctions



Seeck Auctions

P.O. Box 377
Mason City, Iowa 50402



FIRST CLASS

Lee Markley
Box 306
Mentone, IN 46539