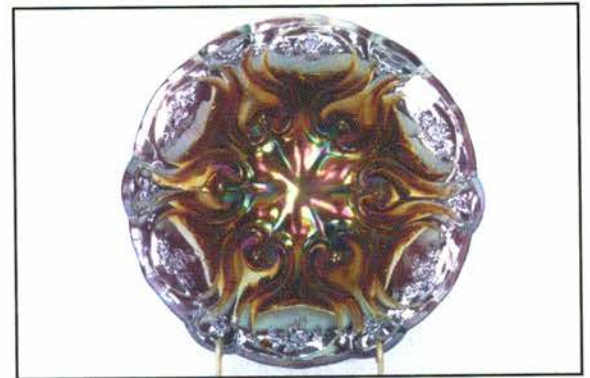


OUTSTANDING CARNIVAL GLASS

AUCTION

SATURDAY, JANUARY 25, 1997 -- 9:30 A.M.



Holiday Inn -- Wentzville
900 Corporate Parkway
Wentzville, MO
(Exit 212a off of I-70)
Call (314) 327-7001 for reservations

JIM and JAN SEECK

Seeck Auctions

515-424-1116

CARNIVAL GLASS AUCTION

SATURDAY, JANUARY 25, 1997 -- 9:30 A.M.

Holiday Inn -- Wentzville, MO

Seek Auctions is pleased to start off our 1997 Carnival Glass Auction year with a bang! We will be selling a selection of glass from the Dee and Paul Bekemeier collection, the Jackie & Randy Poucher collection and the Swede Tilberg collection. There is fabulous glass! The marigold is dark, the purple is beautiful, the white is frosty, the rare is RARE, etc., etc., etc. We have added a few choice lots, so please feel free to send in write-in bids on these too.

We hope everyone had a happy holiday season. If Santa did not leave a piece of carnival glass under the tree for you, then you must attend. Hope to see you all soon.

PREVIEW: Friday, January 24, 3:00 P.M.

RESERVATIONS: Call (314) 327-7001 (Please ask for the Seek Auction block of rooms)

WRITE-IN BID POLICY

1. Write-in bids will be accepted by sending the numbers of the item(s) desired and the amount bid on each to:
Seek Auctions, PO Box 377, Mason City, Iowa 50402.
2. If known by Auction Company, bids may be done over the telephone. (515)424-1116.
3. There is a \$5 handling charge for each successful bid. Shipping and insurance charges are additional.
4. Bidders will be notified by a phone call if their bid(s) are successful. This call will be made 1 - 3 days after the auction is over.
5. Please have all bids in by Wednesday, January 22nd. All bids (by mail or phone) after this date may not be carried out.
6. If you do not receive an item that sold for less than your bid, assume we cancelled your bid because the piece of glass had below average color, manufacture problem, damage or was not listed correctly.
7. To receive price lists send: \$20 -- for this auction and next 7 auctions
\$5 -- for only this auction or individual auction (please specify)

Send to the above address.

- | | |
|---|---|
| ___ 1. Brocaded Acorn hlds sauce - ice blue
Greek Key dome ftd ruffled bowl - green
Rainbow PCE bowl - purple
Six Petals ruffled bowl - peach opal
Smooth Rays 3 in 1 edge bowl - olive green
Grape & Cable ruffled hatshape made from tumbler - marigold - pretty
Wreath of Roses bon bon - marigold
Soda Gold deep centerpiece bowl - marigold
Fenton's Grape & Cable ruffled bowl - blue
Peacock Tail round sauces (4) - amethyst
Peacock Tail round sauce - blue
All Sold Choice | ___ 15. Daisy & Drape vase w/flared top - aqua opal - super color & great opal, very desirable |
| ___ 2. Blackberry Spray ruffled hatshape - lime green | ___ 16. Three Fruits dome ftd ruffled bowl - green |
| ___ 3. Imperial Grape ruffled compote - amber - pretty | ___ 17. Grape & Cable cup & saucer - marigold - dark & super, cup is stippled |
| ___ 4. Iris ruffled compote - marigold - super color | ___ 18. Grape & Cable cup & saucer - purple - also super, a very pretty set |
| ___ 5. Little Flowers deep round bowl - green | ___ 19. Fenton's Three Fruits 12 sided 9" plate - amethyst |
| ___ 6. Blackberry Open Edge 2 sides up basket - blue | <u>950</u> 20. Embroidered Mums bon bon - white - frosty & pretty, as good as I've seen, rare |
| ___ 7. Peacock Tail ruffled hat w/General Furniture Co. 1910 adv. - green | ___ 21. Beaded Cable rosebowl - blue |
| ___ 8. Dragon & Lotus ruffled bowl - blue - nice | ___ 22. Grape & Cable 9" plate w/BW back - purple |
| ___ 9. Dragon & Lotus ruffled bowl - marigold | ___ 23. Stippled Rays dome ftd 10" IC shaped bowl - blue - rare IC bowl |
| <u>600</u> 10. M'burg Whirling Leaves tri-cornered crimped edge bowl - green - radium & super, extremely rare & desirable | ___ 24. File & Fan ruffled compote - peach opal |
| ___ 11. M'burg Whirling Leaves tri-cornered crimped edge bowl - amethyst - radium & super, also very rare | <u>6500</u> 25. Regal Iris 27" Gone with the Wind lamp - marigold - super fantastic irid. on this extremely rare item, once in a lifetime opportunity for the carnival glass lamp collector, a specially made case for this lamp will be included, it has an oak base and the rest is glass |
| ___ 12. Frosted Block 7" plate - smoke - super pretty, minor nick on base | ___ 26. Puzzle bon bon - purple |
| ___ 13. Grape & Cable IC shaped sauce - ice green - scarce item | ___ 27. Vineyard 6 pc. waterset - marigold - very pretty set |
| ___ 14. Parlor Panels 8" vase - marigold - pretty | <u>650</u> 28. Holly 9" plate - amethyst - super rare plate & pretty, not many around |
| | ___ 29. Holly 9" plate - blue - outstanding |
| | ___ 30. M'burg Holly Sprig card tray shaped bon bon - green - radium, pretty |
| | <u>1350</u> 31. Grape & Cable cvd compote - marigold - fantastic, pumpkin dark & extremely rare |
| | ___ 32. Grape & Cable cvd compote - purple - epoxy on |

- underside of lid but nice
33. Singing Birds mug - green - nice
34. Singing Birds mug - purple
- 1600 35. **Christmas compote - purple - outstanding color & irid., extremely rare & desirable, has two minor nicks on edge**
36. Lattice & Daisy tankard water pitcher & 2 tumblers - marigold
37. Grape & Cable sweatmeat - purple
38. **Grape & Cable centerpiece bowl w/points straight up - marigold - dark, pretty**
39. M'burg Strawberry Wreath 8" square bowl - amethyst - radium, pretty, very scarce in this shape
- 1500 40. **Persian Garden large chop plate - purple - extremely rare item, a top piece in carnival glass**
41. Interior Panels 11" vase - purple - pretty
42. **Grape & Cable banana boat - ice green - very pretty & very scarce**
43. **Grape & Cable banana boat - ice blue - dark & nice**
44. **Grape & Cable banana boat - white - frosty, pretty**
45. Grape & Cable banana boats (2) - purple - choice
46. Grape & Cable banana boat - marigold - dark, nice
- 145 47. **Diamond Points 7" vase - blue - rare color for this cute vase**
48. Horse Medallion JIP shaped ftd bowl - amber - nice, scarce
49. Acanthus deep round bowl - purple - pretty
- 825 50. **Grape & Cable candle lamp - green - very rare & pretty**
- 900 51. **Grape & Cable candle lamp - purple - also very rare & pretty**
- 900 52. **Grape & Cable candle lamp - marigold - nice & very rare**
53. Orange Tree powder jar - marigold - nice
54. **Rustic 18" funeral vase - white - frosty, super, has burst inside towards base**
- 500 55. **Rustic 18" funeral vases (2) - blue - both nice, choice**
56. **Rustic 18" funeral vase - marigold - super pretty, dark, scarce**
57. Shriners Rochester, N.Y. 1911 champagne - clear
- 850 58. **M'burg Peacock at Urn large IC shaped bowl - green - satin & fantastic, has emerald type irid., wonderful!**
59. Acorn Burrs spooner - green
60. **Grape & Cable master IC shaped bowl - green - scarce color, pretty**
61. **Grape & Cable master IC shaped bowl - purple - pretty, scarce**
62. **Grape & Cable master IC shaped bowl - marigold - super pink & blue irid.**
63. Four Flowers 6" plate - peach opal
64. Tree Trunk 17" funeral vase - purple - crack in base
65. Vintage powder jar - marigold

- 700 66. **Peacock at the Fountain water pitcher - white - frosty & super, very rare & desirable**
67. Peacock at the Fountain tumbler - white - super
68. Wide Panel 12" vases (2) - blue - nice, choice
69. Fruits & Flowers 7" plate - purple
- 1300 70. **Wishbone ftd ruffled bowl - ice green - very, very rare & desirable**
- 700 71. **Wishbone ftd ruffled bowl - ice blue - super, dark color w/nice irid., rare**
72. Wishbone ftd ruffled bowl - green - red irid.
73. M'burg Peacock Tail Variant ruffled compote - green - radium, minor pinpoint on base
- 285 74. **Grape & Cable bon bon - white - very rare & super!**
75. **Grape & Cable bon bon - blue - electric & super!**
76. Grape & Cable bon bons (2) - green - one with red irid., one with pastel irid, both nice
77. Grape & Cable bon bon - amethyst
78. Grape & Cable bon bon - marigold - dark
- 145 79. **Luster Rose water pitcher - purple - super rare & pretty, lots of blue irid., a great piece***
80. Luster Rose tumbler - purple
81. Fantail ftd round bowl - blue
82. Thistle banana boat - marigold - scarce
83. Grape & Cable card tray shaped 6" plate - purple
- 700 84. **M'burg Vintage IC shaped bowl w/Hobnail back - marigold - satin & super, extremely rare item, highly desired**
85. Cathedral or Curved Star chalice - marigold
- 650 86. **Diamond Points 11 1/2" vase - sapphire - very, very rare vase, first I remember selling**
87. Diamond Points 9 1/2" vase - white - frosty, pretty
88. Diamond Points 10" vase - purple - pretty
89. **Orange Tree 9" plate - blue - super! as nice as they get**
90. **Orange Tree 9" plate - marigold - dark & fabulous**
91. Orange Tree 9" plate - clambroth - nice
92. M'burg Diamonds water pitcher - green - scarce
93. M'burg Diamonds tumblers (6) - green - choice
94. Rococco vase - smoke - nice
95. **Basketweave Open Edge large size square basket - celest blue - super pretty, scarce**
96. Lattice & Grape tumblers (5) - blue - pretty, choice
97. **N's Bushel Basket - green - very nice, very pretty**
98. N's Bushel Basket - blue
99. Cherry Circles card tray shaped bon bon - marigold
- 5000 100. **Grape & Cable 6 pc. punch set - white - super frosty & super rare! impossible set to find, don't miss the chance**
- 1800 101. **Grape & Cable 6 pc. punch set - green - fabulous color & irid. on this very rare set**
- 775 102. **Stippled Grape & Cable 6 pc. punch set - blue - extremely rare & very pretty, another top punch set**
103. **Grape & Cable punch bowl & base - horehound/lavender/smoke - odd color, you name it, very unusual & nice**

- ___ 104. Grape & Cable 6 pc. punch set - purple - very nice, always desirable
- ___ 105. Grape & Cable straight sided 6 pc. punch set - marigold - very nice, unusual w/straight sides
- ___ 106. Blackberry Open Edge ruffled basket - green
- ___ 107. Blackberry Open Edge ruffled basket - blue
- 1650 108. Peacocks PCE bowl w/ribbed back - ice blue - extremely rare & desirable, hard bowl to find
- 850 109. Stippled Peacocks PCE bowl w/ribbed back - blue - super! a very pretty bowl
- ___ 110. Fine Cut & Roses rosebowl - white - rare color
- ___ 111. M'burg Hanging Cherries 7" IC shaped bowl - marigold - satin
- ___ 112. Floral & Grape 7 pc. water set - marigold
- ___ 113. Floral & Grape tumblers (2) - marigold - choice
- 450 114. Corn vase - marigold - very dark, very rare
- 525 115. Corn vase - purple - hard to find
- ___ 116. Corn vase - white - scarce
- ___ 117. Flowers & Frames dome ftd ruffled bowl - purple - nice
- ___ 118. M'burg Nesting Swan ruffled bowl - amethyst - radium, outstanding!
- ___ 119. M'burg Nesting Swan ruffled bowl - green - satin, nice
- ___ 120. Grape & Cable 7" handgrip plate - green - pretty
- ___ 121. Grape & Cable 7" handgrip plate - purple - nice
- ___ 122. Grape & Cable 7" handgrip plate - marigold - dark
- 1550 123. Wild Strawberry 10" ruffled bowl - lime ice green - extremely rare, only one I know of, very pretty color & irid.
- ___ 124. Plain Jane basket - smoke - stretch
- ___ 125. Plain Jane basket - teal - stretch
- ___ 126. Plain Jane basket - white - stretch
- ___ 127. Concave Diamond tumblers (6) - celest blue - choice
- 550 128. Grape & Cable centerpiece bowl w/points turned in - white - very rare & desirable, nice & frosty
- ___ 129. Grape & Cable centerpiece bowl w/points turned in - green - very rare color
- ___ 130. Coin Spot ruffled compote - purple - super! can't get any better than this
- ___ 131. Tree Trunk 6 1/2" squatty vase - purple - pretty
- 650 132. Grape & Cable fernery - marigold - dark, super, very rare & desirable, as good as they get!
- ___ 133. Imperial Grape 8 pc. wine set - marigold
- ___ 134. Stippled Three Fruits spt ftd ruffled bowl - white - scarce bowl
- ___ 135. Three Fruits spt ftd ruffled bowl - purple - pretty
- 650 136. Grape & Cable whiskey decanter - purple - has normal nicks around stopper hole, rare & desirable
- ___ 137. Grape & Cable shot glasses (6) - purple - scarce, choice
- ___ 138. Grape & Cable whiskey decanter - marigold - has normal nicks around stopper hole, rare & desirable
- ___ 139. Grape & Cable shot glasses (6) - marigold - scarce, dark & beautiful, choice
- ___ 140. M'burg Peacocks IC sauce - amethyst - satin
- ___ 141. M'burg Many Stars ruffled bowl w/six point star - amethyst - radium, very rare & nice
- ___ 142. Orange Tree fruit bowls (2) - blue - choice
- ___ 143. Orange Tree fruit bowl - marigold - pretty
- 425 144. Fashion creamer & sugar - purple - extremely rare & pretty, most collectors have never seen these
- 250 145. Fashion creamer & sugar - green - also very rare
- 500 146. Fenton Peacock at Urn 9" plate - blue - very pretty example, scarce
- ___ 147. Fenton Peacock at Urn 9" plate - marigold - dark & super!
- ___ 148. Fruits & Flowers bon bon - blue - nice
- ___ 149. Fruits & Flowers bon bon - purple
- 1100 150. A Dozen Roses ftd round bowl - purple - radium irid., fabulous! a VERY, VERY rare bowl, minor roughness on mold edge
- ___ 151. N's Butterfly bon bon - green - pretty
- ___ 152. Grape Arbor tankard water pitcher - white - frosty & super, very scarce
- ___ 153. Grape Arbor tumbler - white
- ___ 154. Grape Arbor tankard water pitcher - ice blue - rare, crack around entire base, great shelf piece
- ___ 155. Grape Arbor tumbler - ice blue - scarce
- ___ 156. Grape Arbor tankard 7 pc. water set - marigold - nice set
- ___ 157. Grape Arbor tumbler - lavender - super pretty irid.
- 310 158. Wisteria tumbler - white - very scarce tumbler, pretty
- ___ 159. Cosmos & Cane tumbler - white - scarce, pretty
- ___ 160. Grape & Cable large open compote - marigold - very scarce
- ___ 161. Holly square ruffled hatshape - marigold
- ___ 162. Pepper Plant square hatshape - blue
- ___ 163. Pepper Plant ruffled hatshape - amethyst - pretty
- 675 164. Daisy & Drape vase - marigold - super, dark, pretty, what more can you say!
- ___ 165. Daisy & Drape vase - white - frosty, pretty
- ___ 166. Grape & Cable Variant PCE bowl w/plain back - purple
- ___ 167. Grape & Cable PCE bowl w/BW back - green
- ___ 168. M'burg Marilyn water pitcher - amethyst - very pretty, has a few chips on top edge
- ___ 169. M'burg Marilyn tumblers (6) - amethyst - pretty, scarce, choice
- ___ 170. Grape & Cable hatpin holders (2) - marigold - choice
- ___ 171. Boutonniere ruffled compote - amethyst - radium, pretty
- 1100 172. M'burg Peacock at Urn 3 in 1 edge Mystery bowl - amethyst - radium, spectacular! best one I've seen
- ___ 173. Open Rose 9" plate - purple - spectacular irid., rare, has spots of epoxy on roses
- ___ 174. Grape & Cable 7" card tray shaped plate - marigold
- 700 175. Peacocks ruffled bowl w/ribbed back - green - super color w/red irid., rare color
- ___ 176. Stag & Holly large ftd deep ruffled bowl - blue -

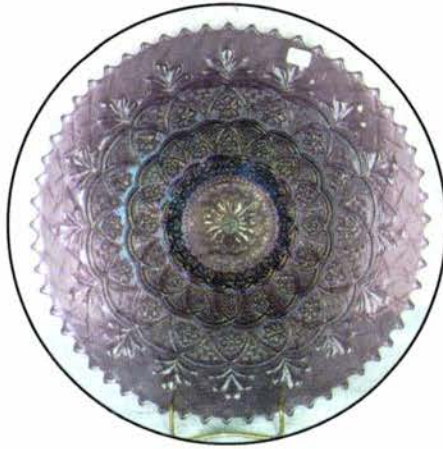
pretty

- ___ 177. Stag & Holly large ftd IC shaped bowl - marigold
- ___ 178. **Wishbone epergne - purple - very pretty, scarce**
- 1200 179. **M'burg Quill water pitcher - marigold - dark even color w/nice irid., radium**
- ___ 180. Oriental Poppy 7 pc. tankard water set - green w/gold paint - non irid.
- ___ 181. M'burg Grape Wreath IC shaped bowl - amethyst - radium, pretty
- 650 182. **M'burg Peacock at Urn large IC bowl - amethyst - radium, having the bee it is extremely rare in radium & absolutely incredible, don't miss out!**
- ___ 183. Dogwood Spray dome ftd ruffled bowl - purple - pretty
- ___ 184. Dogwood Spray dome ftd ruffled bowl - peach opal - pretty
- ___ 185. Dogwood Spray dome ftd ruffled bowl - marigold - pretty
- ___ 186. **Fruits & Flowers large size ruffled bowl - ice green - rare bowl, has buffing on base**
- ___ 187. Fruits & Flowers large size ruffled bowl - purple
- ___ 188. **Corn bottle - smoke - super pretty irid.!**
- ___ 189. **Corn bottle - marigold - also super pretty irid.!**
- ___ 190. **Hearts & Flowers compote - blue - very, very pretty, scarce**
- 600 191. **Hearts & Flowers compote - aqua opal - butterscotch & pretty**
- ___ 192. **Hearts & Flowers compote - aqua opal - pastel & pretty**
- ___ 193. Memphis 7 pc. berry set - marigold - nice set
- 800 194. **Poinsettia milk pitcher - green - very nice example, better than most, rare**
- ___ 195. Drapery Variant 8" vase - marigold - super, dark
- ___ 196. Coral ruffled bowl - marigold - super!
- 550 197. **Boarder Plants dome ftd handgrip plate - purple - spectacular, rare piece of glass**
- 675 198. **Starflower water pitcher - blue - extremely rare & pretty, minor nicks in pattern**
- ___ 199. Heavy Vine shot glass - marigold - scarce
- ___ 200. Stippled Good Luck ruffled bowl - blue - 2 nicks on base but super
- ___ 201. Good Luck ruffled bowl - marigold - dark, super
- ___ 202. Morning Glory 17" funeral vase - green - nice
- ___ 203. Morning Glory 17" funeral vase - marigold - nice
- ___ 204. **Stippled Grape & Cable PCE bowls (2) - blue - both super, choice**
- ___ 205. Stippled Grape & Cable PCE bowl - marigold - dark, pretty
- ___ 206. **Fenton's Peacock at Urn 3 in 1 edge bowl - green - very pretty, as good as they get**
- ___ 207. Wildflower 9" plate - blue - pretty
- ___ 208. Kittens cup - marigold - dark w/nice mold
- ___ 209. Rising Sun juice glass - marigold
- ___ 210. Four Pillars 10 1/2" vases (2) - aqua opal - nice, choice
- ___ 211. Four Pillars 10 1/2" vases (2) - green - has Howard Furniture Co. adv., choice
- ___ 212. N's Blackberry ruffled compote - purple - nice
- 500 213. **Grape & Cable water pitcher - smoke opal - opal by spout & handle, fabulous irid. on this only known piece in this color, does have crack by handle**
- ___ 214. **Grape & Cable water pitcher - smoke - extremely rare color, only a few known**
- ___ 215. **Grape & Cable 7 pc. water set - green - spectacular set!**
- ___ 216. **Grape & Cable 7 pc. water set - purple**
- ___ 217. **Grape & Cable water pitcher - marigold - dark & super**
- ___ 218. Grape & Cable tumblers (4) - marigold - nice
- ___ 219. Stippled Grape & Cable tumbler - marigold - nice
- ___ 220. Grape & Cable tankard tumblers (4) - marigold - nice
- ___ 221. M'burg Little Stars ruffled 7" bowl - amethyst - satin & super
- ___ 222. **Tree Trunk 12" mid-size vase - amethyst - nice**
- ___ 223. Grape & Gothic Arches water pitcher - marigold
- ___ 224. Grape & Gothic Arches tumblers(3) - marigold
- ___ 225. Fisherman's mug - purple
- 500 226. **Stippled Rays IC shaped bowl - red - very scarce**
- ___ 227. **Grape & Cable 4 pc. table set - marigold - super dark & beautifully matched, choice**
- ___ 228. **Heavy Grape chop plates (2) - purple - choice**
- ___ 229. Heavy Grape chop plate - amber - very scarce color, buffing on base
- ___ 230. Heavy Grape chop plate - green
- 300 231. **Nippon PCE bowl - amethyst - super example**
- ___ 232. Ripple 7" small vase - purple - cute size
- 775 233. **Peacock at the Fountain ruffled compote - marigold - very scarce item, nice**
- ___ 234. Imperial Grape punch cup - aqua - rare color
- ___ 235. **Stag & Holly giant rosebowl - marigold - nice**
- ___ 236. Imperial Grape 6" plate - green
- ___ 237. Imperial Grape 6" plates (2) - marigold - choice
- ___ 238. **N's Eight Sided Bushel Basket - ice blue - very rare item, a must for N's collectors**
- ___ 239. Australian Kookaburra ruffled sauce - purple
- ___ 240. Australian Thunderbird ruffled sauce - marigold - chip on edge
- ___ 241. **N's Raspberry ruffled ftd bowl - ice blue - very rare item, minor nick on foot**
- ___ 242. M'burg Fleur De Lis dome ftd IC shaped bowl - marigold - minor nick on base, but all do, radium
- ___ 243. Maple Leaf 6 pc. water set - purple - very nice
- ___ 244. Ski Star large ruffled bowl - peach opal
- 800 245. **Dragon & Lotus IC shaped bowl - red - very rare, slight amberina in base**
- ___ 246. Grape & Cable ruffled fruit bowl - amethyst - nice
- 2100 247. **Embroidered Mums ruffled bowl - aqua - very rare bowl, has some scratches on ruffles**
- ___ 248. Flying Bat hatpin - purple
- ___ 249. Big Butterfly hatpin - purple
- ___ 250. Memphis punch bowl base - blue
Four Seventy Four punch bowl base - purple
Four Seventy Four punch cup - purple - chipped
Sold Choice
- ___ 251. **Captive Rose 9" plate - amethyst - very rare plate in this color, nice**
- ___ 252. **Fenton's Grape & Cable 7" ruffled bowl - red -**

very scarce & desirable

- ___ 253. Dogwood Spray dome ftd deep 3 in 1 edge bowl - purple - nice, minor ruffness on foot
- ___ **254. Isaac Benesch & Sons advertising bowl - amethyst - scarce item**
- ___ 255. Ripple 16" vase - marigold - very pretty
- ___ **256. Grape & Cable candlesticks (2) - green - nice, sold as pair**
- ___ **257. Grape & Cable candlesticks (2) - amethyst - nice, sold as pair**
- ___ **258. Grape & Cable candlesticks (2) - marigold - very nice, sold as pair**
- ___ 259. Fenton's Peacock at Urn ruffled compote - aqua - nice
- 550 ___ **260. Dandelion tankard water pitcher - amethyst - very rare tankard, a nice piece**
- ___ 261. Grape & Cable master berry bowl - amethyst - nice
- ___ 262. Persian Medallion 7" ruffled bowl - green - scarce color
- ___ 263. Bullseye & Beads 9" vase - purple - super pretty
- ___ **264. M'burg Strawberry ruffled compote - amethyst - radium & scarce**
- ___ **265. M'burg Seacoast pintray - pastel marigold - very rare item, common nick on back edge of point**
- 525 ___ **266. Panelled Dandelion tankard 7 pc. water set - green - very rare set, minor nick at bottom of pitcher**
- ___ 267. M'burg Rosalind large ruffled bowl - green - chips on base
- ___ 268. Beaded Shell tumblers (2) - marigold - choice
- ___ 269. M'burg Hobnail Swirl 10" vase - amethyst - very scarce
- ___ **270. Braziers Candies 6" advertising plate - amethyst - very rare plate, advertising is hot**
- ___ 271. Butterfly & Berry tumblers (5) - blue - choice
- ___ 272. Kittens plate - marigold - scarce
- 525 ___ **273. Fanciful low ruffled bowl - lavender - super lavender irid., very scarce**
- ___ **274. Panther ruffled sauce - aqua - very rare color for this sauce**
- ___ **275. Stippled Grape & Cable cracker jar - marigold - rare stippled, nice**
- ___ 276. Stippled Three Fruits 9" plate - purple - very scarce
- ___ 277. Pineapple 3 pc. table set - marigold - very rare set complete, so we'll sell as set, large chip on lid of butter
- ___ 278. Cherries & Little Flowers 5 pc. water set - blue - nice
- ___ **279. Blossomtime ruffled compote - purple - very scarce & desirable**
- ___ **280. Pulled Loop 11" vase - blue - rare color, pretty**
- ___ 281. Royal Oak tumbler - marigold - scarce
- 100 ___ **282. Peacocks 9" plate - blue - super color on this scarce & highly desirable plate**
- ___ 283. Peacock & Grape IC shaped bowl - blue
- ___ 284. Apple Blossom Twigs ruffled bowl - purple
- ___ 285. Smooth Rays ruffled bowl - purple - pretty
- ___ 286. Fashion water pitcher - marigold - pretty
- ___ 287. Orange Tree shaving size mug - blue
- ___ **288. M'burg Peacock at Urn 10" ruffled bowl - amethyst - super radium multi-colored irid.**
- ___ 289. Basketweave Open Edge square shaped hat - blue
- ___ 290. M'burg Grape Wreath 3 in 1 edge bowl - green
- ___ 291. Imperial Grape punch bowl & base - marigold
- ___ **292. Roundup 9" plate - blue - very nice, scarce**
- ___ 293. Carnival neckless - blue
- ___ 294. Carnival neckless - blue
- ___ 295. Carnival neckless and earrings - lavender
- ___ 296. Acorn Burrs tumblers (2) - amethyst
Enamelled Cherries tumblers (2) - blue
Fentonia tumblers (2) - blue
Rambler Rose tumblers (3) - marigold
Butterfly & Fern tumbler - amethyst
Grapevine Lattice tumblers (2) - marigold
Floral & Grape tumblers (3) - blue
All sold choice
- 800 ___ **297. Stippled Grape & Cable 9" plate - blue - extremely rare & desirable, a super nice one**
- 800 ___ **298. Stippled Grape & Cable 9" plate - green - very pretty & rare**
- ___ **299. Stippled Grape & Cable 9" plate - purple - extremely rare! probably more rare than the others, very nice**
- ___ **300. Stippled Grape & Cable 9" plate - marigold - very rare & highly desired**
- ___ 301. Wishbone & Spades ruffled sauce - purple
- ___ 302. Wreath of Roses ruffled compote - green
- ___ 303. Vintage ruffled bowl - blue
- ___ 304. Grape & Gothic Arches master berry bowl - marigold
- ___ 305. Blackberry Open Edge ruffled hat - marigold - pretty
- ___ 306. Basketweave Open Edge JIP shaped hat - marigold
- ___ 307. Basketweave Open Edge ruffled hat - blue
- ___ 308. Blackberry Spray JIP CRE hats (2) - marigold - choice
- ___ 309. Blackberry miniature compote - blue - minor nick on base
- ___ 310. Daisy & Plume ftd rosebowl - green - ribbed interior
- ___ 311. Banded Ribs 5 pc. water set - marigold
- ___ 312. Imperial Grape water pitcher - marigold
- ___ 313. Golden Harvest stopper - marigold
S-Repeat punch bowl base - purple
Memphis punch bowl base - white
Grape & Cable punch bowl base - marigold
Peacock at the Fountain punch bowl base - purple
Persian Garden fruit bowl base - marigold
Strutting Peacock creamer bottom - purple
M'burg Hanging Cherries sugar bowl lid - green
Grape & Cable punch cups (3) - green
Grape & Cable punch cups (2) - marigold
Many Fruits punch cup - purple
Memphis punch cups (2) - marigold
Hobstar & Feather punch cups (6) - marigold
Wide Panel candlestick - marigold
All Sold Choice

- ____ 314. N's Wide Panel mid-size 13" vase - green
 Twigs vase - marigold
 Fine Rib 10" vase - blue
 N's Thin Rib 10" vase - amethyst
 Ribbed 9" vases (2) - marigold
 Smooth Panels 12" vase - marigold
 Wide Panel 8" vase - marigold
 Diamond Rib 11" vase - green
 N's Thin Rib 7" vase - green
 Ripple 10" vase - marigold - pretty
 Star & File 2 hldd celery vase - marigold
 Long Thumbprint 10" vase - amethyst
 Interior Panels 7" vase - marigold
 Diamond Flutes parfait glass - marigold
 Thin Rib 11" vase - marigold
 Diamond Points 9" vase - marigold
 Thin Rib 10" vase - olive green
 April Showers 12" vase - marigold - pretty
 Four Pillars 12" vase - amethyst
 All Sold Choice
- ____ 315. Vintage 9" ruffled bowl - amethyst
 Waffle Block large square bowl - teal
 Vintage fernery - green
 Vintage fernery - marigold
 Vintage fernery - blue
 Leaf Rays nappy - white
 Fenton's Grape & Cable 7" IC shaped bowl - green
 Vintage IC shaped bowl - marigold
 Leaf & Beads rosebowl - marigold - rayed interior
 Imperial Grape ruffled plate - clambroth - pretty
 Dugan Cherries ftd ruffled bowl - marigold - pretty
 Dugan Cherries ftd ruffled bowl - peach opal
 Heavy Grape ruffled bowl - purple
 All Sold Choice
- ____ 316. Kittens ruffled bowl - marigold - crack in base
 Roccoco vase - smoke - minor chip on base
 Fine Cut & Roses rosebowls (2) - green - both have chip on feet
 Poppy pickle dish - blue - chip on edge
 Stippled Rays square CRE bowl - marigold - chip on base
 Sunflower spt ftd ruffled bowl - marigold - point chip
 Illusion bon bon - point chipped
 Starfish bon bon - chips on base
 Louisa rosebowl - green - burst in bowl
 Persian Medallion hair receiver - marigold - chip off edge
 Thistle & Thorn sugar bowl - marigold
 M'burg Peacock at Urn IC shaped bowl - green - cracked
 Persian Medallion IC shaped bowl - marigold - crack in base
 Blackberry Spray 2 sideds up hatshape - marigold - cracked
 Holly 3 in 1 edge bowl - green - chip off edge, pretty
 All Sold Choice
- ____ 317. Stippled Rays 10" PCE bowl - marigold
 Grape & Cable ruffled sauces (6) - amethyst
- Sailboat ruffled sauces (2) - marigold
 Grape & Cable sherberts (4) - purple
 Orange Tree Sherbert - blue
 Rainbow compote - amethyst
 Cherries ruffled ftd bowl - peach opal
 All Sold Choice
- ____ 318. Scales 6" plate - amethyst
 Greek Key dome ftd bowl - green
 Holly ruffled compote - marigold
 Wreath of Roses rosebowl - marigold
 Robin mug - marigold
 Orange Tree standard size mug - marigold
 Coin Dot 3 in 1 edge bowl - green
 Thistle & Thorn ftd ruffled bowl- marigold
 Beer mugs (2) - marigold
 Flower Frog - ice green
 Pebbles ruffled sauce - green
 Wide panel ruffled bowl - marigold
 All Sold Choice
- ____ 319. Ginger Ale bottles (3) - marigold
 Waffle Block hldd basket - marigold
 Woodpecker wall pocket - marigold
 Crackle spittoon - marigold
 Louisa rosebowl - amethyst
 Smooth Rays compote - green
 Golden Wedding whiskey bottle - marigold
 Grape Delight nut bowl - purple
 Grape Delight rosebowl - white
 Lined Lattice 6" squatty vase - peach opal - irid. worn
 Coral Shell lamp shade - marigold
 Etched Grapes lamp shades (3) - marigold
 Hammered Bell shade - white
 Nuart Wide Panel shade - marigold
 Wide Panel shade - marigold
 Etched Bell shades - marigold
 All Sold Choice
- ____ 320. Coin Dot CRE bowl - green
 Twins fruit bowl - marigold
 Crackle car vases - marigold
 Cosmos ruffled bowl - marigold
 Louisa ftd plate - teal
 Double Dutch ftd ruffled bowl - marigold - pretty
 Frosted Block nut bowl - clambroth
 Fentons Grape & Cable ruffled bowl - blue
 Diamond Lace round bowl - marigold
 Big Basketweave hldd basket - marigold
 Stretch Glass 9" bowl - red
 Stretch Glass 7" bowl - red
 Stretch Glass cvd candy dish - vaseline
 Stretch Glass compote - celest blue
 All Sold Choice
- ____ 321. HOACGA table favor mugs - '78, '81, '82, '83, '84, '85, '86, '87, '88, '89, '90
 Carnival Hobstar cvd cracker jar - marigold - IG
 Carnival Hobstar cvd sugar bowl - green - IG
 Persian Medallion 9" plate - purple - new
 1970 Craftsman plate - purple
 All Sold Choice



Seeck Auctions

Seeck Auctions

P.O. Box 377
Mason City, Iowa 50402

FIRST CLASS



Lee Markley
Box 306
Mentone, IN 46539

46539/0306

