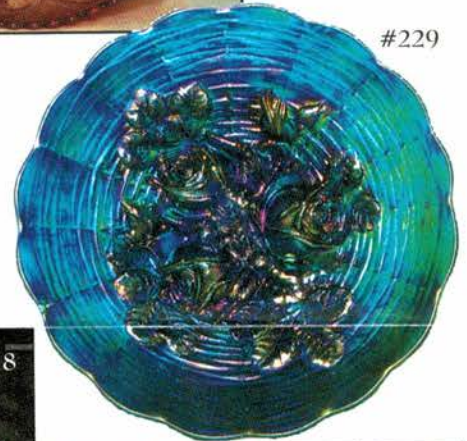
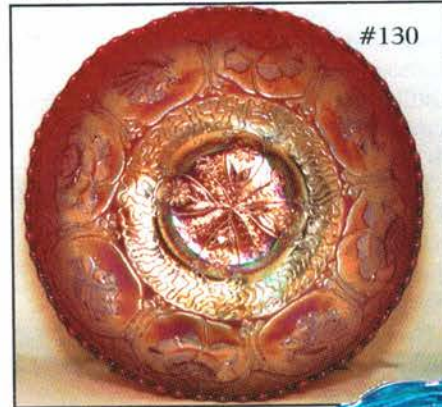
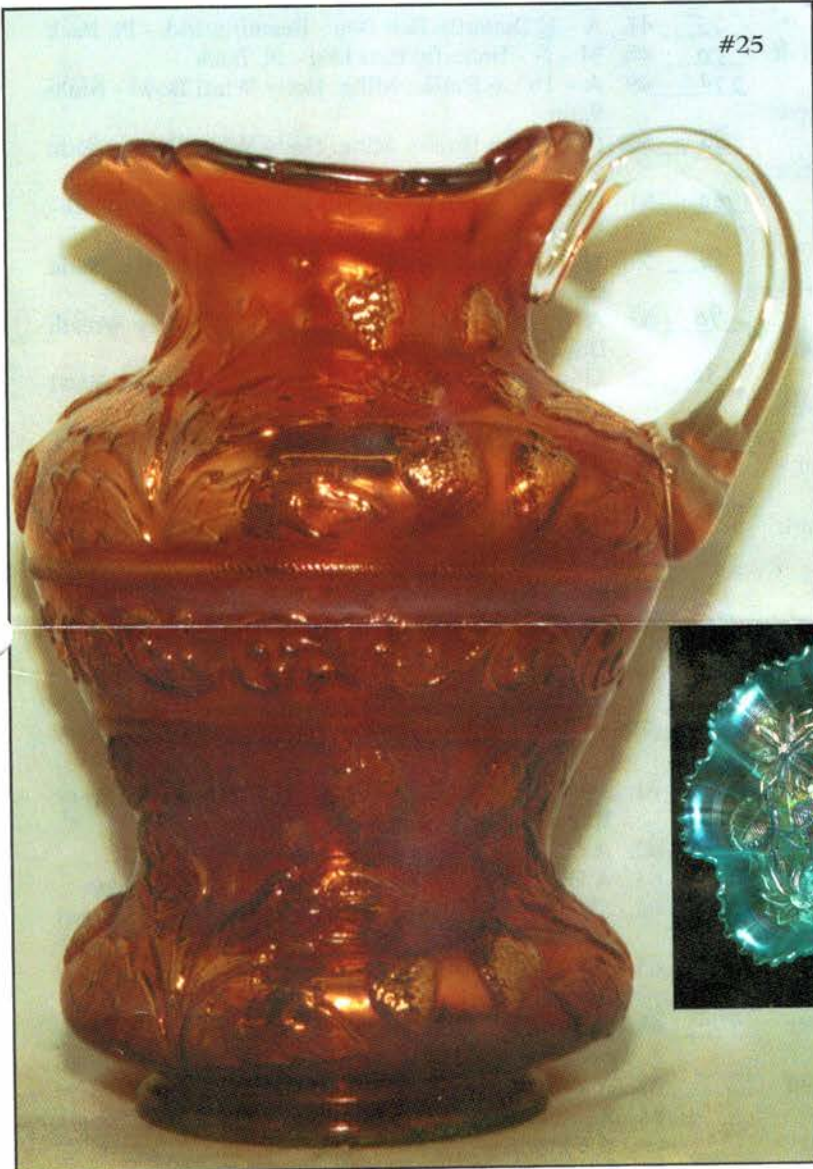


6th Annual Carnival Glass NEW YEAR'S EXTRAVAGANZA!

Saturday, January 4, 1997, 9:30 a.m.

Inclement weather date: Sunday, January 5, 1997



Held Inside the Mickey Reichel Auction Center

1 Mile North of I-70 on Hwy. 5, Exit 101, Boonville, Missouri
Preview Friday 12 p.m. - 6 p.m. and 8 a.m. - 9 a.m. Day of Auction

Make Reservations NOW: Days Inn: 816-882-8624 (Offering Early Bird Block Room Rates Special.)

So everyone who wishes may come early and buy, sell, and trade in your room mini-convention. (Ask for Auction Rates)

Other Motels - Comfort Inn: 816-882-5317 Super 8 Motel: 816-882-2900

WRITE IN BIDS: If you are unable to attend the auction, we will be happy to accept absentee bids which must be received by **TUESDAY** December 31, 1996. Don't Delay. **FOR AUCTION PRICE RESULTS:** Send S.A.S.E and \$3.00 to 516 Third Street, Boonville, MO 65233.

PLEASE NOTE: There is a \$5 handling charge for each successful bid which will be added to the selling price for all write-in bids. This is in addition to the cost of postage, insurance and packing. Your write-in bid will be entered just as if you are present and bidding. Successful bidders will be notified in 1 to 3 days by the auctioneer (so be sure to include your phone number). Direct mail bids to Auctioneer **Mickey Reichel, 516 Third Street., Boonville, MO 65233-1536.** Terms: Cash or Check accepted with proper I.D. and Social Security Number and References. Announcements made day of the auction supercede all printed material. Not Responsible for Accidents or Sold Items.

Call for additional information: 816-882-5292 days or 816-882-5283 evenings.
FAX: 816-882-5292 (evening hours start FAX transmission after beep)

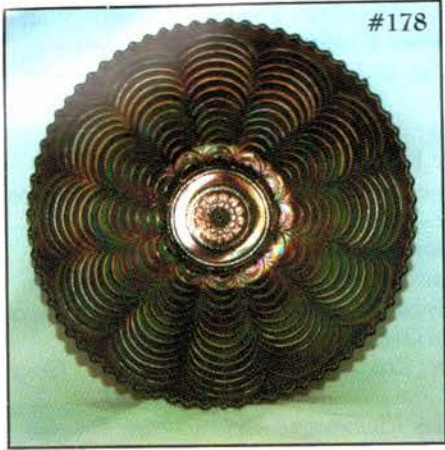


- 40 1. M - 8", Ruffled Spat. Ftd. Chrysanthemum Bowl - Scarce w/this foot
- 37 1/2 2. B - 6 1/2", Ruffled, Ball Ftd. Lotus and Grape Bowl - Silver Irid.
- 10 3. M - 10 1/4", Longthumb Print Vase - Pretty and Radium
- 14 4. A - N - 5" Rd. Peacock at Fountain Berry Bowl - Chip on Edge
- 30 5. A - N Grape and Cable Sherbet
- 30 6. M - Flute and Cane Milk Pitcher - Nice Example
- 42 1/2 7. A - Grape and Cable Tumbler - Purple and Gold Irid.
- 35 8. B - Lattice and Grape Tumbler - Scarce Color ✓
- 65 9. A - Lattice and Daisy Tumbler - Scarce Color ✓
- 6 10. M - Lattice and Daisy Tumbler - Base Chip - Vas. It Glows
- 40 11. P.O. - Tri-Corner - C.R.E. - Beaded Panels Compote - Lots of Opal
- 50 12. M - Golden Harvest Decanter w/Stopper - Minor Roughness Top Stopper
- 30 13. A - Daisy and Plume Compote
- 25 14. I.B. - Brocaded Acorns 2 Handled Dish - 5 1/2"
- 85 15. P - 10" - 8 Ruffle Fenton Heavy Grape Bowl - Super Elec. Irid.
- 250 16. P - 10 1/4" - 6 Ruffle Ski Star and Compass Bowl - Looks Tiffany
- 200 17. W - 11 1/4" - Persian Garden Lg. I.C.S. Bowl - Multi Pink & Blues
- 40 18. A - 10 1/2" - 6 Ruffle Fenton Cosmos Vt. Bowl - Beautiful
- 100 19. M - 8" - C.R.E., Persian Medallion Bowl - Dark Tight Crimp
- 28 20. B - 10" Fenton Fine Rib Vase - Always Desirable
- 45 21. P - 9 1/2" - N, Diamond Points Vase
- 90 22. Smoke - Parlor Panels Vase, 10 3/4" Tall, 5 1/2" Across Top
- 85 23. P - Leaf Columns Vase, N, 9 1/2" Tall - Scarce
- 50 24. P - Thin Rib Vase, N, 10 1/4" Tall - Pretty One
- 2900 25. M - Super Rare - Fenton Strawberry Scroll Water Pitcher - Gorgeous
- 430 26. M - 6 - Matching Strawberry Scroll Tumblers - Match Pitcher - Choice
- 55 27. Cobalt, B - 9" Ruffle Fenton Vintage Bowl - Very Nice
- 185 28. B - N Ruffle, Good Luck Bowl, Rib Back - Striking Pink & Blues
- 52 1/2 29. G - 9" Imperial Open Rose Plate
- 100 30. B - Orange Tree Breakfast Cream and Sugar - Nice Set
- 310 31. P - 8", Tri-Corner, C.R.E., Dugan Flowers and Frames Bowl - Scarce Beauty
- 105 32. A - N - Grape and Cable, Butter Dish w/Lid - Great - Tiny Base Nick
- 125 33. M - Grab Claw Tumbler - Very Pretty All - Choice (5) 50, 25
- 48 34. Clear N - 4 1/4" Round Strawberry Cable Bowls, Gold Trim - Scarce - 3x\$ - Not Irid.
- 125 35. B.O. - Dugan Corn Vase with Husk - Not Irid. - Rare Color
- 175 36. Custard - 10", N, Peacock at Urn Lg. I.C.S. Bowl - Nut Meg, No Irid.
- 85 37. Lav. A - 8 Ruffle Scroll Embossed Compote - Beautiful Irid.
- 72 1/2 38. P - 5 1/2" - Tight C.R.E. Dugan Cherries Bowl - Jeweled Heart Ext.
- 75 39. M - 12" Soda Gold Chop Plate - Big Radium Colorful Plate
- 27 1/2 40. M - 9", Lattice Point Vase, w/Daisy in Bottom, Great Example
- 90 41. P - 12 1/2" Imp. Ripple Vase, 4 3/4" Top - Multi Elec.
- 66 42. P.O. - Dugan Five Hearts Ruffle Compote - Very Nice *Starfish*
- 350 43. M - 9", Fenton Peacock at Urn Plate - Great Pink and Golds
- 250 44. P - Wishbone and Spades, 6 1/2", Flat Plate - Hot Item
- 110 45. G - 8", Round Acanthus Bowl - Scarce Color
- 32 1/2 46. M - 7 1/4", Ruffled, Fenton Acorns Bowl - Dark and Rich
- 75 47. A - N Butterfly Bon Bon - Beautiful Irid. - Pl. Back
- 50 48. M - N - Butterfly Bon-Bon - Pl. Back
- 270 49. A - 10", 6 Ruffle, Mlbg. Holly Whirl Bowl - Multi Satin
- 85 50. G - 10", 6 Ruffle, Mlbg. Holly Whirl Bowl - Satin Irid.
- 100 51. G - 10", 6 Ruffle, Mlbg. Whirling Leaves Bowl - Satin Pink & Blues
- 85 52. M - 10", 6 Ruffle, Mlbg. Primrose Bowl - Satin Gold, Pink Hi-lites
- 90 53. A - 8 3/8", Round Flared Mlbg. Blackberry Wreath Bowl - Dark Radium
- 30 54. M - 7 1/2", 6 Ruffle, Mlbg. Blackberry Wreath Bowl - Radium
- 400 55. A - 9", 6 Ruffle, Mlbg. Sea Weed Bowl - Scarce Item
- 180 56. A - 10 1/2", 6 Ruffle, Mlbg. Blackberry Wreath Bowl - Radium
- 75 57. G - 8", Mlbg., I.C.S., Blackberry Wreath Bowl - Radium
- 65 58. G - 6", Mlbg., 3 in 1, Blackberry Wreath Bowl - Radium
- 55 59. M - 6", Mlbg., C.R.E., Blackberry Wreath Bowl - Radium
- 65 60. A - 7 1/2", Mlbg., 3 in 1, Blackberry Wreath Bowl - Satin
- 280 61. M - Daisy Web Hat Shape, Ruffle Bowl - Very Rare Hat
- 300 62. A.O. - N, Bushel Basket - Always A Favorite *dam*
- 450 63. A.O. - Daisy and Drap Vase, Another Nice Item
- 90 64. M - Crocus Enameled Pitcher - Under Rated Enamel Items
- 185 65. M - Daisies Enameled Pitcher - Under Rated Enamel Items
- 400 66. A - Mlbg. Feather and Heart Water Pitcher - Scarce
- 325 67. A - Floral and Grape Water Pitcher
- 90 68. A - Floral and Grape Tumblers - Choice (3) <
- 105 69. B - Floral and Grape Tumblers - Choice (3)
- 255 70. A - Ruffled, N, Good Luck Bowl - Nice
- 400 71. B - P.C.E., N, Good Luck Bowl - Great Color
- 275 72. A - P.C.E., N, Good Luck Bowl - Also Great Color
- 30 73. Amber - Oval Imperial Pansy Pickle Dish - Very Nice
- 85 74. G - N - Ftd. Blackberry Bowl - Daisy & Plume Ext. - Great - Perfect Feet
- 30 75. A - Diamond Lace Tumbler - Sharp Tumbler
- 400 76. B - 10 1/2", Persian Medallion Chop Plate, Excellent Irid., Sm. Flake on Back of Point - Still Great One
- 80 77. M - 11", Imperial Heavy Grape Chop Plate - One of the Best

- 80 78. M - 9", N, Grape Leaves Bowl, 3 in 1 Dugan Type Edge - Beauty
- 350 79. M - Memphis 2 Pc. Fruit Bowl and 4 Cups - Great Set
- 200 80. AQ - Teal - 7", Ruffled Peacock and Dahlia Bowl - Outstanding Irid.
- 125 81. M - Dark Small Frosted Block Rose Bowl - Cutie - Auction Report - 1 Sold in 5 yrs.
- 75 82. Crystal Mlbg. Ohio Star Vase - Not Irid. - Very Scarce
- 225 83. I.B. - Ftd. Sun Flower, Meander Bowl, Outstanding Rarity - Unfortunate 4" Crack in Bottom
- 190 84. P - Imperial Grape Decanter w/Stopper - One of the Finest
- 140 85. B.A. - Elegance - Hat Pin - Beauty
- 220 86. B.A. - Dog Wood - Hat Pin - Beauty
- 85 87. B.A. - Basketweave - Hat Pin - Beauty
- 175 88. B.A. - Elegance Variant - Hat Pin - Beauty
- 325 89. B.A. - Basket Flower - Hat Pin - Beauty
- 100 90. B.A. - Tufted Pillow - Hat Pin - Beauty
- 175 91. B.A. - Two Flowers - Hat Pin - Beauty
- 50 92. B.A. - Bars and Beads - Hat Pin - Beauty
- 80 93. B.A. - Star Center - Hat Pin - Beauty
- 85 94. B.A. - Star Center Variant - Hat Pin - Beauty
- 325 95. B.A. - Cherries - Hat Pin - Beauty
- 100 96. Teal - Rooster - Hat Pin - Beauty
- 175 97. Lavender - Rooster - Hat Pin - Beauty
- 150 98. Elec. B. - Rooster Hat Pin - Beauty
- 80 99. W - Rooster Hat Pin - Beauty
- 85 100. Waves - Hat Pin - Beauty
- 150 101. Hat Pin - Pattern Unknown - Beauty
- 120 102. Hat Pin - Pattern Unknown - Beauty
- 170 103. Hat Pin - Pattern Unknown - Beauty
- 80 104. Hat Pin - Pattern Unknown - Beauty
- 200 105. Hat Pin - Pattern Unknown - Beauty
- 100 106. Elec. B - Floral Stick Pin - Pattern Not Known - Super Irid.
- 70 107. Elec. B - Floral Stick Pin - Pattern Not Known - Super Irid.
- 1550 108. M - Dark Corn Vase, Plain Base, Beautiful Irid.
- 475 109. G - Corn Vase - Beautiful Soft Blue and Pink Irid. - Flower Base
- 150 110. G - 2 Row Open Edge Blackberry Basket - Very Scarce Color - Nice
- 90 111. G - N - Grape and Cable Bon Bon - Very Nice Example
- 125 112. P - Imperial Lustre Rose Spooner - Super Elec. Irid.
- 225 113. A - Fenton Vintage, 3 in 1, Whimsey Ftd. Bowl - From Nut Bowl
- 200 114. G - 7", Deep, 2 Hdl. Cherry Circles Bowl - Very Scarce Color & Shape
- 145 115. A - N - Grape and Cable Orange Bowl - 11" Across Top
- 30 116. A - 11", Diamond and Rib Vase - Very Pretty
- 30 117. B - 12 1/4", Fenton Fine Rib Vase
- 80 118. P.O. - 12" Pulled Loop Vase - Scarce Color
- 65 119. B - 14 1/4", Swung Diamond Pt. Column Vase - 5 1/4" Flared Top - Very Pretty
- 17 1/2 120. M - 10 3/4", Diamond Point Column Vase
- 35 121. A - 11 1/2", Long Thumb Print Vase, Radium Irid.
- 65 122. M - 15 1/4", Swung Diamond Pt. Column - 4 1/4" C.R.E. Top - Scarce Color & Shape
- 175 123. A - 9", N, Grape and Cable, B.W. - Plate - Great Example
- 80 123 B. Blue Birds & Cherries compote
- 300 123 C. Raspberry water pitcher
- 145 124. A-N - 8", Grape and Cable, B.W. - Hand Grip Plate - Variant - Scarce Shape & Color
- 165 125. A - 7 1/2", Grape and Cable, B.W. - Variant Plate, N - Rare Size and Nice One
- 320 126. A - N - Grape and Cable Candle Sticks, 2x\$ - Nice Match
- 350 127. P - Dugan Grape and Cable Perfume Bottle - Very Scarce Item
- 210 128. A - Grape and Cable Whiskey Shot Glass - Also Very Scarce
- 325 129. G - N - Swirl Rib Tankard Variant #1 - with Rare Alaskan Irid.
- 2500 130. Cherry Red - 7 1/4" - I.C.S. - Dragon and Lotus Bowl - Lite Opal Tips - Rare Color & Size
- 300 131. P - Grape and Cable Punch Bowl and Base - Ruffled
- 225 132. A - 9 Vintage Punch Cups - Very Scarce
- 145 133. M - 7 pc. Grape Arbor Water Set - Dark - Pitcher Has Base Crack
- 245 134. W - Ruffled Hearts and Flowers Bowl - Becoming Scarce
- 250 135. W - Heavy Shell Center Piece, A Very Rare Item Found in Edwards Rarities
- 800 136. P - Homestead Chop Plate - Super Color
- 185 137. P - Electric Imperial Grape Carafe
- 300 138. B - Ruffle Kittens Bowl - Scarce in Blue
- 130 139. M - Luste Rose Imperial 7 pc. Water Set
- 400 140. G - Radium Nesting Swan Bowl - Great Pattern
- 345 141. M - Radium Nesting Swan Bowl
- 300 142. Red - 2 Sides Up, Open Edge Basket - Scarce Shape
- 250 143. I.G. - Ruffled Small Open Edge Basket - Very Scarce Color
- 200 144. B - Nice, Orange Tree Loving Cup - Popular Item
- 105 145. P - N - Ftd. Rosette Ruffled Bowl - Very Pretty
- 190 146. G - 8 Ruffle, Collar Base Dragon and Lotus Bowl - Great Irid. - Scarce Color
- 230 147. M - Ruffled, Rib Back Good Luck Bowl - Dark w/Pink & Blue Irid.
- 250 148. M - 9 1/4" - Flat - N - Strawberry, B.W. Plate - Beautiful Example - Dark
- 1650 149. P - Rose Show Plate - Elec. Blues w/Purple, Pink & Gold Hilite - Great Irid.
- 475 150. Red - 9 1/4" - Identical to Swirl Flute Vase, w/No Swirl - Rare Vase
- 125 151. Lav. - 9 1/4" - Imperial Pansy Bowl - 8 Ruffles - Radium Beauty
- 170 152. G - N - 8 3/4" - Smooth Ext., Grape and Cable Vt. Bowl - Neat Green Color
- 70 153. Amber - Imperial Oval Pansy Pickle Dish - Scarce Color - Elec. Blue Hi-lites
- 70 154. P - Ruffled Imperial Pansy Pickle Dish - Multi Elec.
- 225 155. G - Fern, N, Compote - Beautiful Under Valued Item - Daisy & Plume Ext.
- 145 156. Rich M - Flute & Cane Water Pitcher - Very Scarce Imp. Pattern
- 575 157. G - N - 7 pc. Grape and Cable Water Set - Nicest set I've seen for a long time
- 140 158. G - Ruffle Collar Base, Wild Blackberry Bowl - Scarce Color & Pattern
- 120 159. A - Mlbg. Boutonniere Compote-Great Multi Satin
- 90 160. G - Mlbg. Boutonniere Compote-Great Multi Satin
- 90 161. A - 7 1/2" - 6 Ruffle, Mlbg. Blackberry Wreath Bowl - Great Radium
- 80 162. A - 7 1/2" - 3 in 1, Mlbg. Blackberry Wreath Bowl - Scarce Radium Shape

- 175 163. M - 8 1/2" - 3 in 1 - Mlbg. Holly Whirl - 8 pt. Star Center - Scarce w/Star Center
- 425 164. A - 6" - 6 Ruffle - Mlbg. Isaac Benesch Adv. - Great Example & Scarce
- 110 165. M - Mlbg. Holly Card Tray Bon Bon - w/Isaac Benesch Adv. on Back - Rare
- 65 166. G - Mlbg. Holly Card Tray Bon Bon - Nice Multi Satin
- 110 167. G - Mlbg. Holly, Tri-Corner Nappy - Radium - Neat Shape
- 85 168. M - Mlbg. Holly, Tri-Corner Nappy - Super Radium - Neat Shape
- 40 169. M - 5 1/2" Mlbg. Rd. Flared Scalloped Blackberry Wreath Bowl
- 115 170. G - Mlbg. Hanging Cherries - 7" - Low Round Bowl - Beautiful Satin
- 80 171. M - Mlbg. Hanging Cherries - 7" - Low Round Bowl - Beautiful Satin
- 450 172. Lav. - Ruffled Embroidered Mums Bowl - Rib Back - Very Scarce Color
- 100 173. M - Joan of Arc Smelling Salts Tooth Pick Holder - Very Scarce Adv. Pc.
- 18 174. M - Wild Berry Powder Jar - No Lid
- 300 175. M - 9" Leaf Chain Plate - Very Popular Pattern
- 210 176. A - Collar Base Peacock and Grape Bowl - Fantastic Irid. - Great Bowl
- 40 177. B - 5 1/2" Contemporary St. Clair Paneled Grape Plate - Rare Collectable
- 1050 178. Dark A - 8 1/4" Nippon Plate - Dark Thick Rich Multi-Irid - Very Scarce
- 725 179. G - 8 1/4" Stippled Grape and Cable - Old Rose Distilling Co. Plate - Very Nice
- 145 180. B - 9" Fenton Peacock at Urn Plate - Beauty - Repaired Edge
- 75 181. G - N - Singing Birds Tumbler - Odd Gr. Base Glows
- 140 182. A - N - Acorn Burrs Punch Cups, 2x\$
- 85 183. M - 6 1/4" Pine Cone Plate - Nice Little Plate
- 525 184. Lav. A - Fenton Holly Plate - Scarce Beauty - Little Extra Glass on Tip
- 500 185. B - 10 1/4" Persian Medallion Chop Plate - Tough Item to Find
- 210 186. W - 6 1/4" Persian Garden Plate - Pool of Pearls Ext.
- 120 187. Lav. A - Mlbg. 8", Low Ruffle, Grape Wreath Vt. Bowl - 8 pt. Star Center - Radium
- 140 188. A - 9 1/4", Mulb. Rays and Ribbons Bowl - Ruffle w/Scalloped Edges - Radium
- 230 189. G - 9 1/4", Mlbg. Zig Zag Bowl, Low w/6 Ruffles - Super Radium - Very Scarce Shape
- 220 190. P - 9" Beaded Bulls Eye Vase, 7" Wide Top - Elec. Beauty - Radium
- 165 191. A - Mlbg. Peacock Tail Variant Compote - Super Radium Example
- 170 192. M - Persian Medallion/Grape and Cable 10", Ftd. Ruffle Fruit Bowl
- 130 193. P - Nautilus Creamer with Souv. Writing
- 65 194. B - Pond Lily Card Tray Bon Bon - Pretty One
- 95 195. P - 12" Ripple Imperial Vase, 5 1/4" Top - Great Mold Detail
- 55 196. P - N - Butterfly Bon Bon - Smooth Back
- 70 197. B - Small Orange Tree Mug - Multi Radium Irid.
- 95 198. Amber - Jip - C.R.E., Blackberry Spray Hat - Rich Color - Glows Under Black Lite
- 55 199. G - N Paneled Holly Bon Bon - Very Deep Example
- 650 200. G - Paneled Dandelion 7 pc. Water Set - Scarce
- 165 201. G - Panther Sauce - Round - Very Rare Color





#178



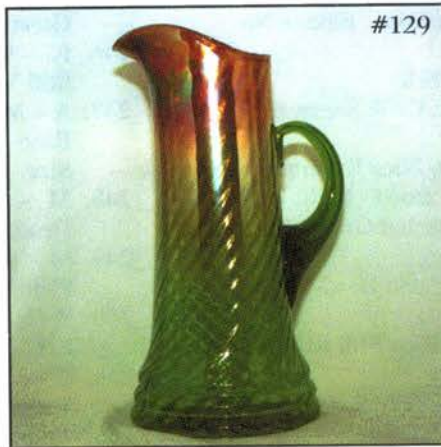
#219



#76



#230



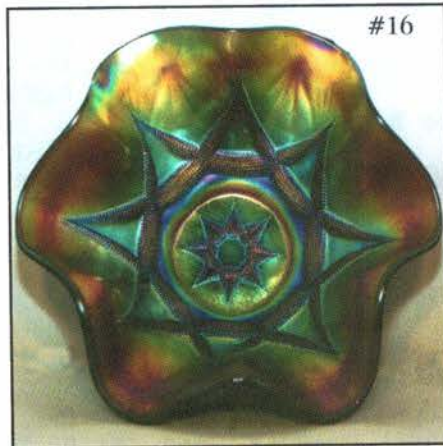
#129



#293



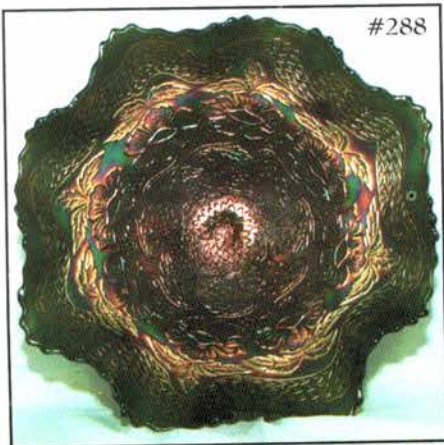
#208



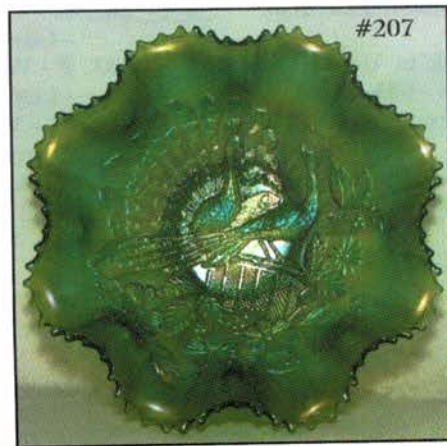
#16



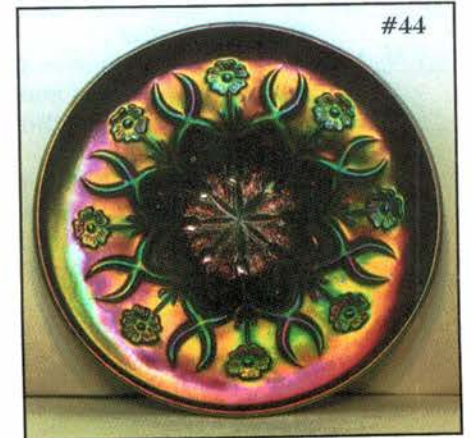
#179



#288



#207



#44

- 475 202. **A - N - Peacocks P.C.E. Bowl - Super**
- 375 203. I.G. - N - Peacocks Plate - Rib Back - A Nice One and Very Popular
- 185 204. G - 9" - Spat. Ftd. Peacock and Grape Plate - Gold and Silver Irid.
- 170 205. G - 3 in 1, Edge Concord Grape Bowl - Very Scarce Shape
- 270 206. A - 10" Stippled and Banded - 8 Ruffle Grape and Cable, N, BW. Bowl - Beautiful and Scarce
- 1175 207. **G - N Ruffle, Rib Bk. Peacocks Bowl - Super Soft Blues, Greens & Pink Irid.**
- 1600 208. **Reng. B - P.C.E. Rib Bk. Peacocks Bowl - Rainbow Irid. - Very Pretty**
- 50 209. M - Persian Medallion Hair Receiver, Square Opening - Scarce - Above Ave. Irid.
- 275 210. **P - N - Drapery Tri-Corner Candy Dish - Good Feet and Super Irid.**
- 165 211. B - N - Fruits and Flowers Bon Bon - Elec. - No Scratches on Fruit
- 70 212. W - Fine Cut and Roses Candy Dish
- 165 213. M - Maple Leaf Table Set - Butter, Cr. & Sugar, plus Spooner - 1 Price
- 55 214. M - Poinsettia Milk Pitcher - Very Nice Example
- 80 215. P - N - Peacock at Urn Sm. I.C.S. Bowl - Multi Irid.
- 105 216. B - Deep Beautiful I.C.S. Peacock and Grape Bowl - Detail Molding
- 110 217. M - P.C.E., Bw. Ext. Grape and Cable Bowl - Dark Scarce Shape
- 3100 218. **Ice Blue - N - Poinsettia and Lattice Ftd. Rib Bk. Bowl - Super Rare Color**
- 950 219. **B - 9" Fenton Leaf Chain Plate - Very Rare Color and Size**
- 45 220. Clam. - 9/2" Cherry Chain Lg. I.C.S. Bowl
- 195 221. M - Lg. Mikado Compote - Shallow Round Top - Beautiful Blue, Pink & Gold Irid.
- 65 222. M - 9" Round Ftd. - Lotus and Poinsettia Bowl - Water Lily to Some - Very Pretty
- 210 223. **P - 9" Ruffled, Imperial Pansy Bowl - Super Radium Elec. Irid.**
- 170 224. P - Mlbg. 9/2" Ruffled Whirling Leaves All the Way to the Center - Great Radium
- 205 225. M - 9" Low Ruffled, Plaid Bowl - Very Nice and Scarce Pattern
- 75 226. M - 9" Collar Base - 8 Ruffle Dragon and Lotus Bowl - Rich Multi Irid.
- 125 227. M - Lg. Mikado Compote - Deep Round One - Radium Irid.
- 1100 228. **M - 8 1/4" Tall, Rising Sun Juice Pitcher w/6 Matching Juice Tumblers - Beautiful - Possible 1 of a Kind Set**
- 1500 229. **B - 9 1/4" Rose Show Plate - Fantastic Elec. Irid. - Roses Look Real**
- 575 230. **M - 9 1/2" Flat Fenton Peacock at Urn Plate - Brilliant Pink, Green and Golds - Fabulous Piece**
- 60 231. M - N - Butterfly Bon Bon - Super Irid. Front and Back
- 310 232. B - N - Bushel Basket - Great Elec. Blue Hi-lites
- 400 233. B - 9 1/4" Stippled, Rib Back 3 Fruits Plate - Elec. Hi-lites - No Scratches on Fruit
- 425 234. B - 9" Flat, Dugan Round Up Plate - Blues, Purple, Pink & Gold Irid.
- 1850 235. **G - 8 1/4" Lovely Pattern - Round Ftd. Leaf Beads Ext. Bowl - Very Rare - Elec. Blue Center - Few Known**
- 1000 236. **B - Rare - Western Thistle, Bolbous Water Pitcher - Super Radium - 1 of 3 Known**
- 350 237. P - N - Grape and Cable Water Pitcher - Beautiful Multi-Irid.
- 250 238. P - N - Grape and Cable Compote w/Lid - Nicks on Lid - Scarce Item
- 300 239. P - N - Grape and Cable Cracker Jar w/Lid - Nick on Inside Base - Scarce Item
- 220 240. A - N - Grape and Cable Tankard Tumblers - 4x\$
- 300 241. **Red - 4 Sides Up Blackberry Spray Hat Shape**
- 235 242. A.O. - N - Bushel Basket - Saph. Cable Base - Aqua Ft. Marigold Overlay
- 115 243. CL - Shriners Champagne - 1911 - Rochester - Great Detail
- 130 244. CL - Shriners Champagne - 1910 - New Orleans - Great Detail
- 80 245. CL - Shriners Champagne - 1909 - Louisville - Great Detail
- 225 246. IG - 9" - N - Rib Back Peacocks Plate - Dye Run - Still Very Desirable
- 525 247. **A - Mlbg. Hobnail Variant Vase - 17" Tall - 4 1/8" Base - 5 1/8" Flared Top - Very Scarce Color & Size**
- 450 248. **M - White Opal Top, Ruffled - Collar Base Dragon and Lotus Bowl - Very Scarce Color**
- 300 249. M - 9" - N - Peacocks Plate with Rib Ext. - Pretty Plate
- 170 250. P - N - Collar Base Ruffled, 3 Fruits Bowl, - Smooth Ext. - Great Multi Irid.
- 140 251. G - 8" Persian Medallion I.C.S. Bowl - Plain Back - Scarce Shape & Color
- 45 252. Amber - Ruffled Imperial Pansy Pickle Dish - Dark Amber
- 85 253. G - 8" Mlbg. I.C.S. Blackberry Wreath Bowl - Multi Satin
- 40 254. M - 9" Deep Crimped, 3 in 1, Round Up Bowl - Radium Irid.
- 60 255. B - Fenton Strawberry Bon Bon - Multi Irid. - Great Detail on Berries
- 650 256. **Ice Blue - Peacock at Fountain Compote - Very Scarce Color**
- 140 257. **A - 7 1/8" Mlbg. Holly Whirl - Flared Round Deep Like A Nut Bowl-Bowl - Super Radium**
- 425 258. **A - 12 1/4" Rd. Whimsey Top, Fenton Vintage, Punch Bowl & Base - Wreath Rose Ext.**
- 325 259. G - P.C.E. - N, Greek Key, BW. Ext. Bowl - Scarce Shape
- 170 260. Elec. B - N, Grape and Cable Bon Bon
- 200 261. P - N - 9" Strawberry and B.W. Ext. Plate - Great Irid.
- 625 262. **G - Wishbone Epergne - Great One - Very Scarce - Lily Perfect**
- 600 263. **P - Wishbone Epergne - Great One - Very Scarce - Lily Perfect**
- 175 264. **M - Wishbone Epergne - Also Great - Very Scarce - Tiny Chip on Lily Base**
- 110 265. G - Mlbg. 8 1/4" Low Round Mayan Bowl - Radium Tried to be a Plate
- 18 266. M - 9 1/2" Feathers Vase - 1/2" Heat Check in Side of Vase
- 135 267. Lav. A - 6 1/2", Hand Grip N, Grape and Cable Plate - Scarce and Nice Example
- 125 268. A - N - 6 1/4", Grape and Cable, B.W. Ext. Plate - Cute Plate

- 325 269. Lav. A - 10 1/2", N - Grape and Cable, Low Lg. I.C.S. Bowl - Very Pretty
195 270. P - N - Whimsy Grape and Cable Compote - Great Rainbow Irid.
725 271. Lav. A - 6" Hand Grip Fern Brand Chocolates Plate - In Big Demand
150 272. Dark Rich M - Mary Ann 3 Handle Loving Cup - Rare - Heat Crack in 1 Handle
165 273. A - Sowbery Diving Dolphins - 8 1/4" Rd. Bowl - Radium & Rare - 1 Ft. Buffed
140 274. M - 4 1/2" Tall, Flared Top Beaded Spears Tumbler - Very Scarce
450 275. Pearlized Custard w/Nut Meg, Three Fruits Medallion, Spat. Ftd. Bowl - Very Rare
140 276. P.O. - 10 1/2" Ruffled Petal and Fan, Jeweled Heart Ext. Bowl - Great Bowl
135 277. A - Stork and Rushes Lattice Band Mug - Nice Radium One
170 278. B - N - Poppy Pickle Dish - Super Elec. Blue Hi-lites
200 279. P - Grape and Cable Banana Bowl - Great Example
125 280. Clam - 9" Leaf Chain Plate - Pretty Under Valued Plate
150 281. P.O. - 6 1/2" Four Flowers, Smooth Ext. Plate - Lots of Opal & Flat
650 282. A.O. - N - Dandelion Stippled Mug - One of the Best - Super Pastel
210 283. Celeste, B. - 9", 3 Row Open Edge 8 Ruffle, BW. Ext. Bowl - Great - Celeste Is Hot
525 284. A.O. - Hearts and Flowers Compote, Rib Ext. - Very Nice Example
140 285. P - Imperial Flute Breakfast Creamer - Rare - Imp. Best Iridescence
300 286. W - 4, N - Acorn and Burrs Frosty Matched Punch Cups - Rare - 4x\$
925 287. P - 10 1/2", 6 Ruffle, Dugan Petal and Fan Bowl - Jeweled Heart Ext. - Super Elec.
300 288. G - 11" Square Ruffled, Ball Ftd. Two Flowers Bowl - Rare Size, Color & Shape
400 289. P - N - Grape and Cable Punch Bowl - 11 1/2" Rd. Top w/Base - Scarce Shape
110 290. P - 4 - N - Grape and Cable Punch Cups - 4x\$ - Match Nicely
600 291. P - Grape Arbor Tankard Pitcher - Rich Radium Multi Irid.
65 292. P - Grape Arbor Tumbler - Dark w/Rayed Interior
240 293. P - 9" Three Fruits Plate, N, Plain Back - Thick Stretch Multi Irid.
300 294. P - 9" Stippled Three Fruits Plate - Very Nice - No Scratches on fruit
120 295. M - 9" Stippled Three Fruits Plate - Blues and Pinks - Tiny Chip on Apple
425 296. M - 9", N, Stippled Peacocks Plate - Super Color
120 297. P.O. - 6" Ski Star Crimped Edge Plate - Rare
225 298. A - Ftd. Sunflower Bowl - Fantastic Color
525 299. A.O. - Three Fruits Meander Ftd. Bowl - Super Opal
310 300. M - Tree of Life, 7 pc, Water Set - Very Rare Set
300 301. Red - Vintage Fernery Bowl - Perfect
100 302. G - Mlbg. Whirling Leaves Bowl - Radium
140 303. G - Fenton 12 Sided, Three Fruits Plate - Scarce Color
40 304. A - 9", 8 Ruffle Fenton Vintage Bowl - Scarce Color and Beautiful *dem*
110 305. P.O. - 6 1/4" Persian Garden Plate - Light Opal Swirled
60 306. M - Singing Birds, N, Mug - A Fine Example
325 307. P - N - Grape and Cable Thumb Print Master Bowl & 5 Small Ones - Nice
375 308. A - 9" Round Mlbg. Deep Peacocks Bowl - Radium - Looks like a peacock in a mirror
380 309. A - Mlbg. Peacocks, 5" Deep Rd. Sauce Bowls - Choice of 5 *120, 2x70, 2x60*
50 310. G - Blackberry Bramble Compote
25 311. B - 10 1/4", N, Tree Trunk Vase - Chip on Top - Beautiful Irid.
45 312. P - 11", N, Tree Trunk Vase
75 313. A - 11 1/8" April Shower Vase - Peacock Tail Int.
30 314. M - N - Grape and Cable Butter Dish Lid - Lots of Pink
32 1/2 315. P - N - Acorn Burrs Butter Dish Bottom
17 316. Celeste B. - Concave Diamonds Pitcher Lid
30 317. M - Australian 8", Contemporary - 1836-1986, Wombat Plate - 350 Limited
5 318. Teal - Australian - A.C.E. Waratah - 1988 - Coaster
5 319. Teal - Australian - A.C.E. Kookaburra - 1989 - Coaster
5 320. Red - Australian - A.C.E. Emu - 1990 - Souvenir Coaster
20 321. 4 - 1965 Woman's Day Magazine Carnival Glass Issues - \$ Each
75 322. Copy of Butler Brothers Catalog - 250 Issued
45 323. 1 thru 10 Copies of Marion T. Hartung Books
80 324. M - 10" Square Shape 8 Ruffle, Cherry Chain Bowl - Dark and Unusual Shape
200 325. G - 9 1/2" Ruffled Ribbon Edge, Mlbg. Rays and Ribbon Bowl - Super Radium
110 326. A - 9" - Spat. Ftd. - Grape and Cable Meander Plate - Thick Blue & Pink Irid.
110 327. A - 7 1/2" - N - Grape and Cable Plate, B.W. Ext. - Nice Example
115 328. W - 9" - 6 Ruffle Fenton Holly Bowl - Real Frosty
100 329. M - 9" - N - Three Fruits Plate - Smooth Ext. - Pretty Plate
60 330. G - 6" Round Very Shallow - Mlbg. Cosmos Bowl - Great Radium
170 331. B - 9" Ruffled Panthers Master Ftd. Bowl - Multi Elec. Blue & Pine - Mfg. Bubble In Foot
45 332. W - 6" Ruffled Grape Vine and Lattice Bowl - Blue Hi-lites
75 333. M - 8" Round Tight C.R.E. Fenton Vintage Bowl - Popular Shape
40 334. A - Deep 5 1/2" - 6 Ruffle Peacock Tail Sauce Bowl
20 335. M - Bell Shape Top Peacock and Urn Compote - Fenton
65 336. P - 10" - N - Diamond Point Vase - Very Nice
25 337. M - 6 Ruffle Pony Bowl - Pink and Blue Around Pony Head
80 338. B - Ten Mums Tumbler - Scarce Item
40 339. B - N - Peacock at Fountain Tumbler
45 340. P.O. - 7" Tri-corner C.R.E. Smooth Ray, Single Flower Ext. Bowl - Very Nice
35 341. Yellowish Green - 8 1/4" Ripple Vase - 5" Ruffle Top - 3 3/8" Base
15 342. G - 8" Acanthus Bowl - Deep Round One
NOTE: Several unnumbered pieces sold at end of auction.



THANK YOU
WE APPRECIATE YOUR BUSINESS!
BOTH BUYER AND SELLER -
GIVE ME A CALL WHEN YOU'RE
READY FOR A SALE! -

Mickey Reichel



MICKEY REICHEL
AUCTION COMPANY

DIRECT MAIL TO:
516 THIRD STREET
BOONVILLE, MO
65233



First Class Mail

LEE MARKLEY
PO BOX 306
MENTONE, IN 46539-0306



"EXCITEMENT BUILDS AS THE CROWD GATHERS AT THE MICKEY REICHEL AUCTION COMPANY!"