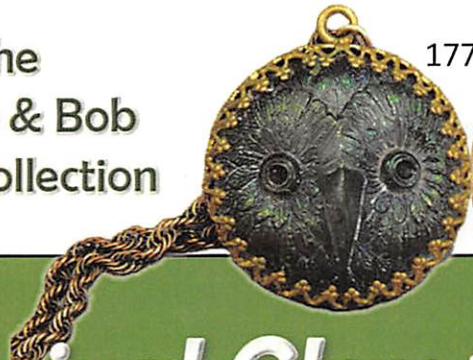


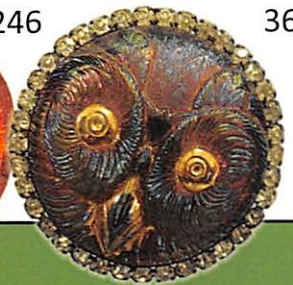
The
Sherry & Bob
Cyza Collection



177



246



36



76

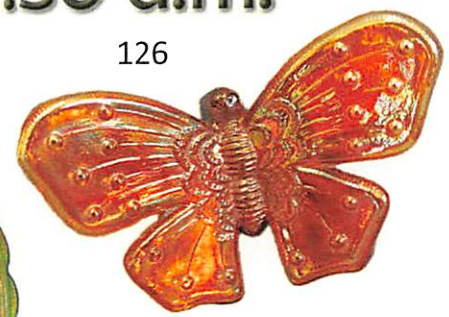
Carnival Glass 2023 Auction

Saturday, July 8, 9:30 a.m.

The International
Carnival Glass
Association
Convention



123



126

Embassy Suites
Milwaukee/
Brookfield, WI.



124



22

15



10



Open
to the
Public



127



116



97



67



125

Seeck Auctions
Jim & Jan Seeck
641-424-1116



Jim & Jan Seeck

SATURDAY, JULY 8, 2023 — 9:30 a.m.

641-424-1116

Embassy Suites Milwaukee/Brookfield

1200 S Moorland R., Brookfield, WI 53005

★ FRIDAY PREVIEW ★ PUBLIC INVITED

★ ABSENTEE and LIVE BIDDING is available on-line
through Auction Flex at: www.seeckauction.com

★ NO BUYER'S PREMIUM

The Sherry & Bob Cyza Collection

Seeck Auctions is pleased to be selling at auction **The Sherry and Bob Cyza Collection** of Carnival Glass out of Minnesota. This is a beautiful collection of glass put together by both of them over several years of collecting.

They both have been very active in the hobby traveling to many conventions and auctions with Bob being a past president of the ICGA. Hatpins have

been Sherry's love for many years while plates were Bob's passion. The Butterfly ornaments were both their favorites and took many years of hunting to acquire such a collection.

The Embassy Suites in Brookfield is an awesome hotel to host the ICGA convention and auction. Would love to see you attend!

LODGING

If planning to stay at the hotel, reservations can be made by calling (262)782-2900. Mention you are with the ICGA to be included in the block – **Group Code CESICG**. If you have questions about the convention, contact **President Brian Pitman** at: 785-274-9105 or email: bpitman@gmail.com

Visit the ICGA Website: <http://www.internationalcarnivalglass.com>

ABSENTEE BIDDING OPTIONS

Terms: Cash or Check, VISA, MasterCard and Discover accepted w/proper ID. 4% Clerking Fee on all purchases made using credit cards. Announcements made day of sale take precedence over any printed information.

1) Call us by phone at: Jim and Jan at (641) 424-1116

2) Prebid: Enter your bids from our website into our online catalog through the Auction Flex system.

- *An exciting advantage of entering your bids online yourself*, is the option to be notified by email if you are outbid on an item. You will know when you are outbid on an item and you can increase your bid on that item or bid on something else.

3) **Live Phone Bidding:** Is available on pieces with an estimated sale price of \$500 or more. If you would like to participate in live phone bidding, contact us by the **Thursday before the auction.**

4) **Real-time Bidding:** Bid live during the auction through Auction Flex live webcast bidding.

There is a \$7 handling charge for each successful bid. Shipping and insurance charges are additional.

Bidders will be notified by phone/email if their bid(s) are successful. This will be done 1 - 3 days after the auction.

BID INCREMENTS:

\$1 - \$100/\$5	\$100 - \$200/\$10	\$200 - \$700/\$25	\$700 - \$1,500/\$50
\$1,500 - \$3,000/\$100	\$3,000 - \$5,000/\$250	\$5000+ Auctioneer's Discretion	

- ___ 1. Fenton Stretch Glass #636 1 lb candy jar - celeste blue
- ___ 2. Holly 3 in 1 edge bowl - green
- ___ 3. Imperial Grape compote - lavender / amethyst - super irid.
- ___ 4. Imperial Grape water carafe - purple - super pretty
- ___ 5. Honeycomb rose bowl - peach opal - nice
- ___ 6. Ripple 9 1/2" vase - purple - has 2 1/2" base, pretty
- ___ 7. Raindrops dome ftd ruffled bowl - peach opal
- ___ 8. Tree Trunk 7 1/2" squatty vase - blue - nice
- ___ 9. Tree Trunk 7" squatty vase - green - pretty
- 16,500 ___ 10. **Chrysanthemum lg size ftd IC shaped bowl - celeste blue - an awesome piece of glass, only one I know of, this is incredible!**
- ___ 11. Holly ruffled compote - lime green - nice
- ___ 12. Holly 9" plate - amethyst - has pretty stretchy irid.
- ___ 13. Holly 9" plate - marigold - very pretty, also has some stretchy irid.
- ___ 14. Basketweave Open Edge lg size square shaped basket - ice green - nice
- 14,500 ___ 15. **Poppy Show 9" plate - aqua opal - fantastic, extremely rare plate w/super pastel irid., wonderful!!**
- 2000 ___ 16. **Poppy Show 9" plate - green - another rare color, this is fantastic, WOW!**
- ___ 17. Poppy Show 9" plate - blue - scarce & very nice
- ___ 18. Poppy Show 9" plate - marigold - dark, & very nice
- ___ 19. Heron mug - purple - pretty
- ___ 20. **Leaf Chain ruffled bowl - green - these normally have no irid., this one is fantastic!**
- ___ 21. Palm Beach rose bowl w/Gooseberry interior - white - has applied silver edge
- 7,250 ___ 22. **NUART Chrysanthemum chop plate - emerald green - absolutely incredible, bright, has stretchiness, everything you ever wanted in a plate, extremely rare! from the Matheny Collection**
- 2,600 ___ 23. **NUART Chrysanthemum chop plate - purple - another beauty!**
- ___ 24. Vintage fernery - red - super nice
- ___ 25. Vintage fernery - blue - a beauty
- ___ 26. **Open Rose 9" plate - purple - beautiful example**
- ___ 27. Open Rose 9" plate - amber - super nice
- ___ 28. Open Rose 9" plate - marigold - nice, couple of nicks on base
- ___ 29. **Broken Arches 9 pc. punch set - purple - super pretty punch bowl & base, great example!**
- ___ 30. Basketweave Open Edge JIP basket - red
- ___ 31. Wreathed Cherry spooner w/gold decoration - white
- 2,100 ___ 32. **M'burg Peacock master IC bowl - amethyst-radium, rare piece, super pretty, this is the one pictured on the back cover on Marie McGee's Millersburg book**
- ___ 33. Holly ruffled hat shape - red - nice
- 5,500 ___ 34. **Grape & Cable hatpin holder - aqua opal - super example and very beautiful, extremely rare w/very few known, tiny nick on bottom edge of one foot, who cares**
- ___ 35. **Grape & Cable hatpin holder - ice blue - very pretty, feet has nicks**
- 2,800 ___ 36. **Tufted Horned Owl hatpin - lavender - surrounded by rhinestones, fantastically rare hatpin!**
- ___ 37. **Tree Bark hatpin - dark - very scarce**
- ___ 38. Propeller hatpin - dark - hard one to find, nice
- ___ 39. Penstar hatpin - dark - pretty
- ___ 40. Floral metal framed hatpin w/glass background - do not know the name of this one
- ___ 41. Pansy ruffled bowl - purple - super pretty
- 3,250 ___ 42. **Rose Show 9" plate - lime green opal - fabulous pastel irid., some call this plate ice green opal, rare**
- 2,500 ___ 43. **Rose Show 9" plate - emerald green - another beautifully iridized plate, Wow!**
- ___ 44. Rose Show 9" plate - ice blue - very pretty w/lots of yellow
- ___ 45. Rose Show 9" plate - blue - pretty w/electric highlights
- 2,000 ___ 46. Rose Show 9" plate - marigold - lot so fantastic yellow irid., beautiful
- 1,600 ___ 47. **Little Flowers 10" ruffled bowl - red - cherry red & beautiful, rare, rare, from the Whitley collection**
- ___ 48. Beaded Bullseye 11" vase - purple - very pretty
- 1,000 ___ 49. **Stippled Three Fruits 9" plate w/ribbed back - horehound - super pretty example of this rare color**
- ___ 50. **Stippled Three Fruits 9" plate w/ribbed back - aqua opal - pastel & fabulous, has minor rubs on fruit but incredible plate**
- ___ 51. Stippled Three Fruits 9" plate w/ribbed back - blue - another beautiful plate
- ___ 52. Stippled Three Fruits 9" plate w/ribbed back - purple - last of a great run of Three Fruits plates
- ___ 53. N's Bushel Basket - aqua opal - pastel & fantastic
- ___ 54. N's Bushel Basket - marigold - beautiful
- 2,100 ___ 55. **Rustic 18 1/2" funeral vase w/plunger base - amethyst - this is a great vase, beautiful & very rare!**
- ___ 56. Blackberry Spray Variant 2 sides up hat - green - very pretty, has 2 sets of berries
- ___ 57. M'burg Hobnail Swirl spittoon - marigold - nice
- ___ 58. **Illinois Soldiers & Sailors 7" plate - blue - scarce & very beautiful**
- ___ 59. **Illinois Soldiers & Sailors 7" plate - marigold - another rare & beautiful plate**
- ___ 60. Grape & Cable bonbon - blue - electric & super
- ___ 61. Lattice & Points hat shape - marigold - pretty, does not have the daisy in bottom
- ___ 62. **Fashion water pitcher - purple - outstanding example, as good as they get!**

- ___ 63. Fashion tumbler - purple - tumbler is unbelievable
- ___ 64. Double Scroll candlesticks - red - nice, scarce
- ___ 65. **M'burg Courthouse 3 in 1 edge bowl - lavender- 7,000 extremely rare shape & color, super pretty, very tiny rough spot on base by the seam 3,750**
- ___ 66. Peacock & Grape IC shaped bowl - marigold - pretty
- 2,400 ___ 67. **Four Flowers chop plate - purple - fantastic plate, very rare, out of the Morgan Collection**
- ___ 68. Fine Cut & Roses candy dish - aqua opal - very nice
- ___ 69. Pansy oval pickle dish - purple - fantastic
- ___ 70. **Rose Show Variant ruffled bowl - blue - super pretty example, quite scarce**
- ___ 70a. Big Basketweave 10" vase - purple - fantastic w/ beautiful irid. 2,000
- ___ 71. **Stippled Three Fruits ruffled bowl w/ribbed back - sapphire - very pretty, very rare**
- ___ 72. **Stippled Three Fruits ruffled bowl w/ribbed back - aqua opal - another beauty, nice even irid.**
- ___ 73. M'burg Peacock IC shaped sauce - amethyst - radium & super!
- ___ 74. **Stippled Peacocks 9" plate w/ribbed back - blue - fantastic, loaded with stretchy irid.**
- ___ 75. Fenton Peacock at Urn IC shaped bowl - marigold
- 5,250 ___ 76. **Golden Owl hatpin - cobalt blue - extremely rare & desirable**
- ___ 77. **Faceted Butterfly hatpin - dark - another rare one, great opportunities here!**
- ___ 78. **Strawberry hatpin - amber - rare & desirable**
- ___ 79. Sun's Up hatpin - lavender - very nice hatpin
- ___ 80. Pegasus metal framed hatpin w/glass background - unusual
- ___ 81. Fruits & Flowers bonbon - aqua opal - nice
- ___ 82. Fruits & Flowers bonbon - marigold - dark & nice
- ___ 83. **Stippled Grape & Cable 8 pc. punch set - green - rare to find stippled, beautiful, one cup has nick on top edge**
- ___ 84. Orange Tree standard size mug - red - pretty
- ___ 85. Orange Tree standard size mug - marigold - dark
- 1,900 ___ 86. **Hattie ruffled bowl - blue - rare, rare color for Imperial, this one is beautiful!**
- ___ 87. Hearts & Flowers ruffled bowl w/ribbed back - marigold - dark, pretty 8,000
- ___ 88. Hearts & Flowers ruffled bowl w/plain back - ice blue - another pretty one 12,500
- 2,300 ___ 89. **Hattie chop plate - purple - this one is super! Wow!**
- ___ 90. Hattie chop plate - marigold - pretty
- ___ 91. Fanciful 9" plate / IC bowl - white - slightly turned up on edge
- ___ 92. **Stippled Grape & Cable PCE bowl w/ribbed back - aqua opal - pastel & beautiful, lots of great opal 1,400**
- ___ 93. Fenton Grape & Cable 7" ruffled bowl - red
- ___ 94. **Broeker's Flour advertising 6" plate - amethyst - hard to find, great plate 5,750**
- ___ 95. Hearts & Flowers ruffled compote - aqua opal - nice
- ___ 96. Hearts & Flowers ruffled compote - marigold - dark, pretty
- ___ 97. **Orange Tree w/trunk 9" plate - ice green - very rare color & pretty, super irid.**
- ___ 98. **Orange Tree w/trunk 9" plate - blue - fantastic plate, this came out of the Matheny Collection**
- ___ 99. **Orange Tree 9" plate - green - rare color and very pretty for these, a dandy**
- ___ 100. Stippled & Banded Grape & Cable hatpin holder - marigold - rare to be both stippled & banded, very few around, tiny pinpoint on one toe
- ___ 101. **M'burg Ohio Star vase - green - radium w/ fantastic irid., tiny pinpoint on side of edge of base**
- ___ 102. Honeycomb & Beads crimped edge 6" plate - purple - pretty irid.
- ___ 103. Blackberry Spray JIP CRE hat shape - aqua opal - rare color, nice
- ___ 104. Blackberry Spray JIP CRE hat shape - red - nice
- ___ 105. **Tree Trunk Elephant Foot 13" funeral vase - purple - outstanding vase, very rare & nice, from the George Thomas Collection**
- ___ 106. N's Eight Sided bushel basket - marigold - pretty
- ___ 107. Six Petal ruffled bowl - lavender - super
- ___ 108. **Farmyard 6 ruffled bowl - purple - beautiful example, nice, even multi-colored irid.**
- ___ 109. Fenton's Fine Rib 9 1/2" vase - lime green opal - rare color, pretty
- ___ 110. Fenton's Fine Rib 10" vase - aqua - scarce, many may call this sapphire
- ___ 111. Dahlia 4 pc. water set - white w/red decoration - rare
- ___ 112. Dahlia water pitcher & 1 tumbler - white w/gold decoration - scarce
- ___ 113. Dahlia 4 pc. table set - white w/gold decoration - rare, missing sugar lid
- ___ 114. **Fantail ftd IC shaped bowl - blue - electric, super**
- ___ 115. Dandelion mug - aqua opal - pretty irid., tiny nick on handle, slight buffing on base
- 8,000 ___ 116. **Leaf Chain IC shaped bowl - celeste blue - this bowl is fantastic, has beautiful irid.**
- ___ 117. N's Peacock at Urn IC sauce - blue
- 12,500 ___ 118. **M'burg 1910 Detroit Elks IC shaped bowl - amethyst - radium, super, a GREAT example!**
- ___ 119. Good Luck PCE bowl w/ribbed back - marigold - nice
- ___ 120. **Memphis 8 pc. fruit bowl set - white - super pretty, scarce set**
- 1,400 ___ 121. Fenton Peacock at Urn ruffled bowl - green - fantastic, the Peacock is incredible
- ___ 122. Pansy low ruffled bowl or plate - lavender - rare color & super, very flat
- 5,750 ___ 123. **Fenton Butterfly ornament - vaseline - extremely rare color, first one I have sold, very few around, a great opportunity**

- 6,750
___ 124. Fenton Butterfly ornament - green - another extremely rare color, did not even know this color existed, has Fenton museum numbers on it
- 3,750
1,250
4,000
___ 125. Fenton Butterfly ornament - blue - super, rare
___ 126. Fenton Butterfly ornament - marigold - hard to find
___ 127. Fenton Butterfly ornament - vaseline - not iridized, glows under black light, rare, rare
- ___ 128. Lattice & Points 7" ruffled dish - purple - super, has souvenir on it but cannot read it
- ___ 129. Fenton Grape & Cable ruffled fruit bowl - green - outside of bowl is fantastic, unique look
- ___ 130. Imperial Grape wine decanter - purple - super
- ___ 131. Imperial Grape wine decanter - marigold - has octagon stopper
- ___ 132. Rose Show ruffled bowl - green - scarce color & pretty
- ___ 133. Rose Show ruffled bowl - purple - pretty
- ___ 134. Rose Show ruffled bowl - aqua opal - nice
- ___ 135. Hobstar & File napkin ring - marigold - monogrammed with an "N", rare novelty
- ___ 136. Orange Tree IC shaped bowl - red - rare shape, pretty
- ___ 137. Orange Tree w/trunk IC shaped bowl - marigold - dark, nice
- 1,100
___ 138. Good Luck ruffled bowl w/ribbed back - aqua opal - bowl is super pretty, has several small spots of epoxy between points, very hard to see
- ___ 139. Morning Glory 13" funeral vase - purple - nice, has 9" mouth
- ___ 140. Peacock & Grape 9" plate - marigold - dark, super
- ___ 141. M'burg Trout & Fly IC shaped bowl - lavender - satin irid., super nice bowl, fish is very pretty
- ___ 142. Peacock at the Fountain tumbler - green - fabulous irid.
- ___ 143. Peacock at the Fountain tumbler - white - nice
- ___ 144. Peacock at the Fountain tumbler - white - nice
- 1,000
___ 145. King Spider hatpin - dark - rare & desirable
- ___ 146. Scarab Shell hatpin - blue - very scarce, couple of typical nicks on edge
- ___ 147. Knotty Tree Bark hatpin - amber - have not seen another, very unusual and similar to the Strawberry, RARE!
- ___ 148. Flying Bat hatpin - dark - nice
- ___ 149. Dimples & Brilliance hatpin - dark
- ___ 150. Concord ruffled bowl - green - super pretty, tiniest pinpoint on edge
- ___ 151. Peacocks ruffled bowl w/ribbed back - aqua opal - pastel & pretty
- ___ 152. Peacocks ruffled bowl w/ribbed back - aqua opal - butterscotch & pretty
- ___ 153. Peacocks ruffled bowl w/ribbed back - blue - electric, nice
- ___ 154. Basketweave Open Edge 4 sides up basket - ice blue - scarce color, nice
- ___ 155. Dugan Cherries ftd ruffled bowl - purple - super
- ___ 156. Holly ruffled bowl - celeste blue - super stretchy irid., beautiful & rare, tiniest pinpoint on seam
- ___ 157. Holly ruffled bowl - marigold on moonstone - dark & super, this is a fantastic bowl
- ___ 158. Holly ruffled bowl - blue opal - scarce color, super
- ___ 159. Holly ruffled bowl - blue
- ___ 160. Holly ruffled bowl - red - scarce, nice
- ___ 161. Poppy Show ruffled bowl - ice green - scarce color, pretty, small heat check in base
- ___ 162. Poppy Show ruffled bowl - purple - nice example, scarce
- ___ 163. Luster Rose fernery - smoke - very pretty, scarce color
- ___ 164. Orange Tree ruffled bowl - red - scarce & very nice
- ___ 165. M'burg Peacock Whimsey Proof - amethyst - radium, super nice
- ___ 166. Grape & Cable 8 pc. round punch set - marigold - beautiful set, 3 cups are stippled
- ___ 167. Thistle 9" plate - green - scarce Fenton plate, nice
- ___ 168. Imperial Grape large ruffled bowl - purple - super pretty, has chip on edge
- ___ 169. Peter Rabbit ruffled bowl - marigold - scarce pattern, nice
- 1,600
___ 170. Dragon & Lotus ruffled bowl - red - nice
- ___ 171. M'burg Dolphins compote - amethyst - radium, very rare, fantastic!
- ___ 172. Four Seventy Four tumbler - blue - rare color, nice irid. for these
- ___ 173. Windmill tumbler - purple - pretty
- ___ 174. Luster Rose tumbler - purple - pretty
- ___ 175. Pair of Imperial Grape tumblers - purple - pretty
- ___ 176. Spector's Department Store / Heart & Vine 9" plate - marigold - dark, beautiful, super nice irid., for these
- ___ 177. Owl pendant - smoke - has nice irid., extremely rare, from Lucille Britt
- ___ 178. Star & Flower hatpin - blue - extremely rare
- ___ 179. Hearts & Cross hatpin - dark
- 1,800
___ 180. Strawberry hatpin - green - scarce & always desirable
- ___ 181. Border Path hatpin - dark
- ___ 182. Two Flowers hatpin - dark
- ___ 183. Enameled Apple Blossom 5 pc. water set - blue - rare set, super nice, one tumbler has nick
- 2,100
___ 184. Floral & Optic ftd rose bowl - smoke on milk glass - rare rose bowl, very few of these around
- ___ 185. N's Peacock at Urn master IC bowl - purple - very pretty
- ___ 186. Waterlily ftd ruffled sauce - green - super nice
- 5,000
___ 187. NUART Homestead chop plate - blue - not only is this color rare, it is super fantastic
- 1,600
___ 188. Homestead chop plate - emerald green - another beautiful chop plate

- 4,250 189. NUART Homestead chop plate - amber - rare, fantastic
- 1,350 190. Homestead chop plate - smoke - rare, lots of stretch
- 1,150 191. Homestead chop plate - purple - scarce, nice
- ___ 192. Fantail ftd ruffled bowl - marigold - a beauty
- ___ 193. Tree Trunk 13" midsize vase - blue - scarce, nice
- ___ 194. Tree Trunk 12 1/2" midsize vase - purple - beautiful irid.
- 1,200 195. Hearts & Flowers 9" plate w/ribbed back - marigold - dark, super
- ___ 196. Dragon & Lotus IC shaped bowl - blue
- ___ 197. Shell & Sand 9" plate - purple - spectacular looking plate
- ___ 198. Chrysanthemum ruffled bowl - red - cherry red color, super, from the Muehlbauer Collection
- ___ 199. Luster Rose ftd centerpiece bowl - purple - Imperial at its best
- ___ 200. Vintage 9" IC shaped bowl - celeste blue - super pretty w/stretchy irid.
- ___ 201. Grape & Cable Variant 9" plate w/plain back - purple - fantastic
- ___ 202. Daisy & Drape flared out vase - aqua opal - butterscotch & beautiful
- ___ 203. Fenton Peacock at Urn 9" plate - blue - super pretty
- ___ 204. Fenton Peacock at Urn 9" plate - marigold - outstanding irid.!
- ___ 205. Butterfly & Berry hatpin holder - blue - hard to find, beautiful
- ___ 206. Daisy Wreath ruffled bowl - blue opal - pretty
- ___ 207. Peacocks 9" plate w/ribbed back - blue - very pretty w/electric highlights
- ___ 208. Peacocks 9" plate w/ribbed back - green - very nice
- ___ 209. Peacocks 9" plate w/ribbed back - marigold - super dark & beautiful, many would call this pumpkin
- ___ 210. Raspberry tumbler - blue - extremely rare color, has "Ida 1914" etching
- ___ 211. Grape Arbor tumbler - purple - pretty
- ___ 212. Grape Arbor tumbler - white - very nice
- ___ 213. Grape Arbor tumbler - marigold
- 5,500 214. Plaid ruffled bowl - celeste blue - extremely rare bowl & beautiful w/great stretch, very hard to see nick on edge, these rarely come up at auction
- ___ 215. Banded Grape & Cable hatpin holder - purple - scarce, typical pinpoint on one foot
- ___ 216. Heart & Vine 9" plate - blue - pretty with even irid.
- ___ 217. Peacock at the Fountain 7 pc. punch set - marigold - scarce, nice
- ___ 218. Acanthus round bowl - purple - very pretty
- ___ 219. Stag & Holly 9" spt ftd plate - marigold - pretty
- ___ 220. Captive Rose 9" plate - amethyst - one of the prettiest ones I've seen, beautiful
- ___ 221. Captive Rose 9" plate - blue - nice
- ___ 222. N's Corn vase w/plain base - purple - a beauty, not many look this good
- ___ 223. Imperial Grape 6" plate - purple - super
- ___ 224. Imperial Grape 6" plate - marigold - super
- ___ 225. Round Up low ruffled bowl - purple - fantastic
- ___ 226. Stag & Holly lg size ftd ruffled bowl - black amethyst - cannot get any light through it, very pretty for these
- ___ 227. N's Butterfly bonbon w/ threaded back - ice blue - rare color & super
- ___ 228. Concord 9" plate - amethyst - another super pretty plate, tiny pinpoint on base
- ___ 229. Basketweave Open Edge ruffled basket - red
- ___ 230. Basketweave Open Edge ruffled basket - aqua
- ___ 231. Basketweave Open Edge ruffled basket - lime green
- ___ 232. Basketweave Open Edge ruffled basket - lime green
- ___ 233. Basketweave Open Edge ruffled basket - black amethyst
- 3,400 234. Rustic 18" funeral vase - green - this would be called emerald if it was Northwood, spectacular! from the Morgan collection
- ___ 235. Rustic 19 1/2" funeral vase - marigold - dark, pretty, scarce
- ___ 236. Rustic 17" funeral vase - marigold - has wonderful pastel irid., gorgeous vase!
- ___ 237. 1911 Rochester NY Shriner champagne
- ___ 238. 1910 New Orleans Shriner champagne
- ___ 239. 1903 Saratoga Shriners mug
- ___ 240. M'burg 1911 Campbell & Beesley advertising handgrip plate - amethyst - a super pretty example, very nice & rare
- ___ 241. Peacock & Grape ruffled bowl - green - nice
- ___ 242. Heavy Grape chop plate - purple - beautiful
- ___ 243. Grape & Cable dresser tray - purple - pretty
- ___ 244. Loganberry vase - purple - fantastic example!
- ___ 245. Open Rose 9" plate - amber - nice
- 3,750 246. Golden Owl hatpin - amber - another very rare hatpin
- ___ 247. Marvelous hatpin - dark - only one I've seen
- ___ 248. Scarab Shell hatpin - amber - very rare
- ___ 249. Border Path Variant hatpin - dark
- ___ 250. Faceted Dart hatpin - dark
- ___ 251. Peacocks PCE bowl w/ribbed back - blue - nice, small buffed spot on point
- ___ 252. Peacocks PCE bowl w/ribbed back - purple - pretty
- ___ 253. Vintage dome ftd ruffled bowl - celeste blue - extremely rare with nice stretch irid., a dandy
- ___ 254. Grape & Cable tumbler - purple - pretty
- ___ 255. Peach tumbler - white w/gold decoration
- ___ 256. Dugan Peacock at the Fountain tumbler - blue
- ___ 257. Grapevine Lattice tumbler - marigold - nice
- ___ 258. Fanciful 9" plate - purple - super
- ___ 259. Near Cut cologne bottle - green - might be the best one I've seen, very rare

- ___ 260. Bells & Beads 7" ruffled bowl - purple - pretty
- ___ 261. Palm Beach berry bowl w/Gooseberry interior-white
- ___ 262. Grape & Cable Variant ruffled bowl w/plain back-purple - pretty
- ___ 263. Holly 2 sides up hat shape - red - cherry red w/ red irid.
- ___ **264. Leaf Chain 9" plate - green - very rare to look this beautiful, most are not, an exceptional piece**
- ___ **265. Leaf Chain 9" plate - blue - electric, super**
- ___ **266. Leaf Chain 9" plate - marigold - dark, super**
- ___ 267. Basketweave Open Edge JIP basket - red
- ___ 268. Inverted Strawberry 7" round bowl - green
- ___ 269. Holly ruffled hat shape - red - nice
- ___ **270. 1914 Parkersburg Elks 7" plate - blue - a beautiful & rare plate, highly desirable**
- ___ 271. Flute toothpick - purple - nice
- ___ **272. M'burg Many Stars IC shaped bowl - green - has 6 point star, radium, super nice!, from the McGee Collection**
- ___ 273. Hearts & Flowers ruffled compote - aqua opal - pretty, minor polished nick on base
- 6,250** ___ **274. Lotus & Grape 9" plate - amethyst - spectacular irid., probably the best one out there, from the Matheny Collection, tiniest little pinpoint on back of one point, the irid. far outweighs any condition on this plate**
- 2,900** ___ **275. Imperial 11" Freehand vase w/2 handles - great piece**
- 1,700** ___ **276. Imperial 9" Hanging Hearts trumpet vase - white w/blue edge**
- ___ **277. Imperial 9" diam Hanging Hearts bowl - white w/blue edge**
- ___ 278. Hansen Turkey toothpick holder - red - signed Robert Hansen
- ___ 279. Hansen Maple Leaf toothpick - blue - signed Robert Hansen
- ___ 280. Hansen Owl on Books - purple - signed Robert Hansen
- ___ 281. Hansen Owl on Books - aqua - signed Robert Hansen
- ___ 282. Hansen Owl on Books - blue - signed Robert Hansen
- ___ 283. Dagenhart Owl on Books - red - contemporary
- ___ 284. Hansen Peacock & Stork mug - blue - signed Robert Hansen
- ___ 285. Hansen Moon & Stars rose bowl - red - signed Robert Hansen
- ___ 286. Hansen Tree Stump toothpick - red - signed Robert Hansen
- ___ 287. Hansen Dove compote - purple - signed Robert Hansen
- ___ 288. Hansen Galloway toothpick - red - signed Ron H. Hansen
- ___ 289. Hansen Pump & Trough - green - Pump is signed Robert Hansen, the trough is signed RGH
- ___ 290. Crider Maple Leaf tumbler - white - signed Terry Crider
- ___ 291. Crider Corn vase w/pulled up back - sapphire opal - signed Terry Crider
- ___ 292. Crider Corn vase - sapphire opal - signed Terry Crider
- ___ 293. Crider Daisy & Button spittoon - marigold - signed Terry Crider 1981, #19 of 150
- ___ 294. Crider Grape & Cable hatpin holder - green - signed Terry Crider
- ___ 295. Crider Wreathed Cherry 4 1/2" JIP vase - blue opal - signed Terry Crider
- ___ 296. Crider Threaded art glass 6 1/2" vase - purple - signed "Terry Crider, To Juanita"
- ___ 297. Crider Wreathed Cherry spittoon - blue opal - signed Terry Crider
- ___ 298. Crider 4 1/2" threaded vase - red - signed Terry Crider 1989
- ___ 299. Crider Hanging Hearts paperweight - signed Terry Crider 1989
- ___ 300. Crider Pair of Inverted Strawberry tumblers - sapphire blue - both signed Terry Crider
- ___ 301. Gibson Turtle - blue
- ___ 302. Fenton Inverted Strawberry water goblet- aqua opal - contemporary
- ___ 303. Lot of 2 contemporary tumblers - Grape & Cable in red AND Eyewinker in ice blue
- ___ 304. Large contemporary 7" bulldog - blue - heavy & neat piece of glass
- ___ 305. Fenton Alpine Thistle vase - red - contemporary, from the Family Signature Series, bottom signed "Frank M Fenton 1993, #495"
- ___ 306. Fenton Poppy show vase - vaseline opal - contemporary
- ___ 307. Gibson Harvest Flower 7 pc. tankard water set - bittersweet - contemporary
- ___ 308. Fenton Dancing Ladies square top vase - sapphire- a whimsy
- ___ 309. 1994 ICGA Diamond Rib whimsy JIP decorated vase-white opal- hand painted by Martha Reynolds
- ___ 310. 1996 ICGA Grape & Cable 6" whimsy decorated plate - white opal - hand painted by J.K. Spindler
- ___ 311. 1998 ICGA Frolicking Bears spittoon - white opal
- ___ 312. 2005 ICGA Frolicking Bears whimsy decorated spittoon - purple - bears are gold painted
- ___ 313. 2004 ICGA Frolicking Bears whimsy decorated spittoon - blue
- ___ 314. 1998 ICGA Frolicking Bears whimsy JIP vase - green opal
- ___ 315. 1997 ICGA Frolicking Bears vase - plum opal
- ___ 316. 2003 ICGA Frolicking Bears JIP decorated vase - green - hand painted by Kim Plauche
- ___ 317. 1993 ICGA Frolicking Bears vase - white opal
- 500** ___ 318. 1997 ICGA Frolicking Bears decorated vase - iridized milk glass - hand painted by J.K. Spindler
- ___ 319. 1994 ICGA Diamond Rib decorated JIP vase - rosylene - hand painted by Martha Reynolds

SEECK AUCTIONS

P.O. BOX 377

MASON CITY, IA 50402

PRESORTED
FIRST CLASS
MAIL
US POSTAGE
PAID
COPI

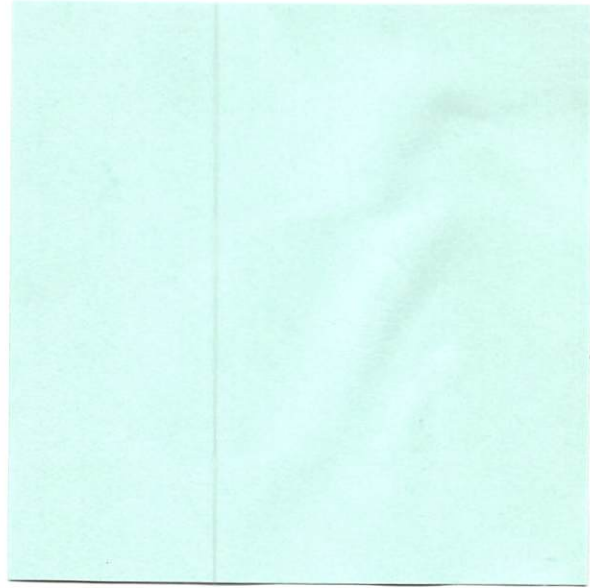


234

2023 CARNIVAL GLASS AUCTION

SAT. JULY 8

Embassy Suites/Brookfield
Milwaukee, Wisconsin



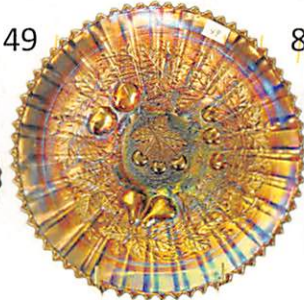
111



32



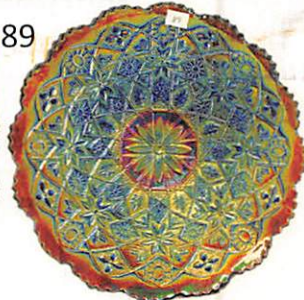
47



49



86



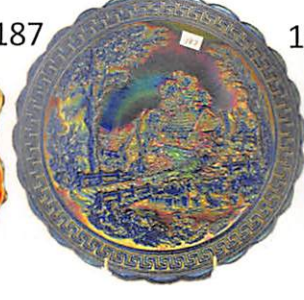
89



118



157



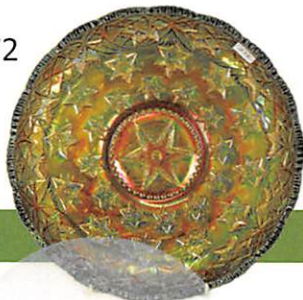
187



197



214



272



34



62



274