

# Tampa Bay Carnival Glass Club

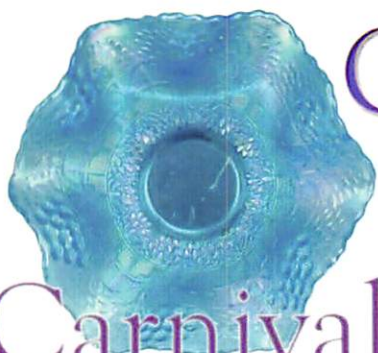
## Convention

# Carnival Glass 2023 Auction

Friday Afternoon Jan 27 6pm Saturday Jan 28 9:30am

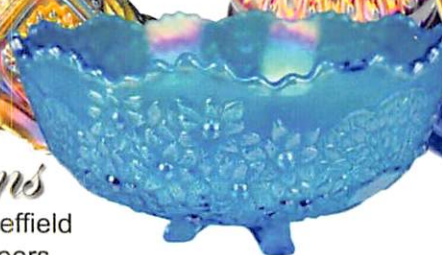
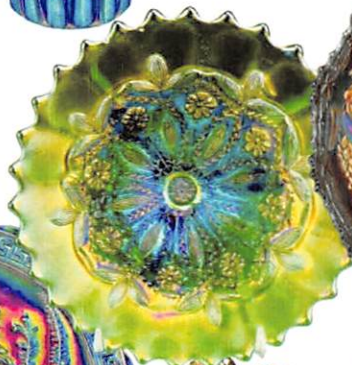
Woody Schaefer & Lewis Case

Ron & Judy Britt



Godfrey Hotel  
Tampa Bay, FL

Open  
to the  
Public



*Sheffield Auctions*

Scott & Suanne Sheffield  
Principal Auctioneers

# Tampa Bay Carnival Glass Club Convention 2023 Auction

Located at the Godfrey Hotel & Cabanas Tampa,  
7700 West Courtney Campbell Causeway, Tampa, FL 33607-1430,

+1 (813) 281-8900



Friday's Auction is January 27, 2023 at 6:00 PM EST Selling Lots 1-150

Items On Friday Evening are from the collections of the late  
Woody Schaefer & the late Lewis & Barbara Case

Preview of the glass will be Friday afternoon at 5:00 PM EST, prior to the auction.

The Auction will continue on Saturday Morning, January 28, 2023 at 9:30 AM EST

Selling lots 151-400

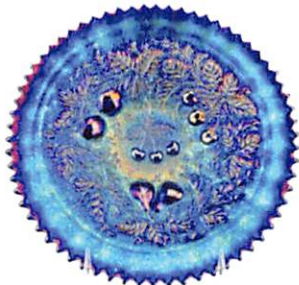
Items On Saturday Morning are from the collection of Ron & Judy Britt

Prebidding for this auction will begin on 1-6-2023 at 6:30 PM EST at  
[www.SheffieldAuctions.hibid.com](http://www.SheffieldAuctions.hibid.com) (Details & terms are on the website)

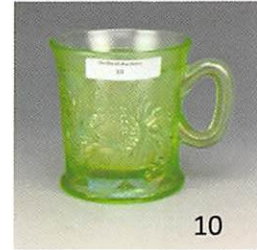
Scott Sheffield, Principal Auctioneer 606-306-1792



Information about the Tampa Bay Carnival Glass Club Convention can be found at:  
[www.tampabaycarnivalglass.com](http://www.tampabaycarnivalglass.com)



- 1) Northwood Ice Blue Oriental Poppy Tumbler; Beautiful color on this tumbler!
- 2) Fenton Blue Lily of the Valley Tumbler; Awesome Cobalt base - very nice!
- 3) Fenton Marigold Lily of the Valley Tumbler; Wonderful piece to add to any collection.
- 4) Imperial Purple Grape Tumbler; Stunning! What a great pattern!
- 5) Millersburg Green Hanging Cherries Tumbler; Radium finish
- 6) Northwood Ice Blue Dandelion Tumbler; Scarce and hard to find this one.
- 7) Northwood White Oriental Poppy Tumbler; Scarce in this color
- 8) Northwood Lime Green Oriental Poppy Tumbler; hard to come by - it's a beauty
- 9) Northwood Aqua Opal Dandelion Mug; Beautiful!
- 10) Northwood Ice Green Dandelion Knights Templar; Scarce, Collectable Mug, if you don't have one, you need to look at this one.
- 11) Northwood Electric Blue Beaded Cable Rosebowl; Stunning - ELECTRIC!!
- 12) Northwood Blue Leaf & Bead Rosebowl; Very pretty!
- 13) Cambridge Marigold Buzz Saw Cruet Large; Not easy to find these with a stopper!
- 14) Cambridge Green Small Buzz Saw Cruet; Scarce and awesome!
- 15) Fenton Vaseline Opal Strawberry Bonbon; Scarce in this color!
- 16) Northwood Aqua Opal Beaded Cable Rosebowl; Beautiful
- 17) Northwood Lavender Grape & Cable Hatpin Holder; Light in Color - Feet are good
- 18) Millersburg Amethyst Bullseye and Loop Vase; Great color for this pattern - 7" tall
- 19) Northwood Marigold Leaf Column Vase; Electric Marigold - Very Stunning! 7" tall.
- 20) Imperial Purple Colonial Lady Vase; Beautiful at 5.5" tall
- 21) Fenton Blue Paneled Dandelion Tankard; Striking Iridescence & Beautiful
- 22) Northwood Emerald Green Grape & Gothic Arches; Water Pitcher - Rare in this color.
- 23) Imperial Purple Windmill Milk Pitcher; Has outstanding blue and yellow iridescence - Gorgeous!
- 24) Fenton Blue Star Flower Water Pitcher; Exquisite Colors! RARE!



10



14



21



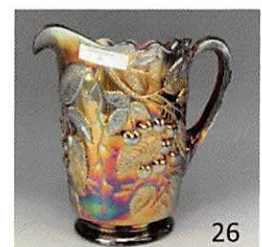
22



24



25



26

- 25) Northwood Green Grape & Cable Pitcher & Tumbler; One of the best Water Pitchers, comes with 1 tumbler.

- 26) Millersburg Amethyst Hanging Cherries Pitcher; Always a collector's favorite, very nice Water Pitcher

- 27) Millersburg Amethyst Marilyn Water Pitcher; Outstanding color - very beautiful!

- 28) Fenton Blue Blueberry Water Pitcher; Stunning color with diamond shape top.

- 29) Northwood Amethyst Dandelion Tankard & Tumbler; This has Beautiful Color all over!

- 30) Northwood Ice Blue Peacock at Fountain Pitcher & Tumbler; Scarce! Great color!

- 31) Millersburg Green Feather & Heart Water Pitcher; Pretty, Pretty, Pretty!

- 32) Northwood Aqua Opal 3 Fruit Stippled Bowl; Measures 9" across - amazing colors in iridescence.

- 33) Northwood Sapphire Good Luck Ruffled Bowl; Gorgeous!

- 34) Northwood Sapphire Grape & Cable Stippled Bowl; Ruffled and measures 9" across - a beauty!

- 35) Northwood Aqua Opal Peacocks on Fence Bowl; Ruffled and measures 9" across - Outstanding!

- 36) Northwood Ice Blue Grape & Cable Stippled Bowl; Pie Crust Edge - beautiful at 8" wide

- 37) Northwood Ice Blue Sunflower Footed Bowl; RARE! and measures 8.25" across - Gorgeous!

- 38) Northwood Blue 3 Fruit Medallion Stippled Bowl; ELECTRIC IRIDESCENCE!!! measures 8.5" across - Don't miss this one!

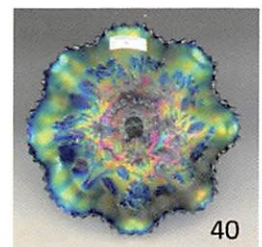
- 39) Northwood Electric Blue Wishbone Bowl; Absolutely Stunning! Electric!

- 40) Northwood Blue Good Luck Stippled Bowl; Gorgeous with yellow and blue iridescence.

Has a thin base and measures 9" wide.

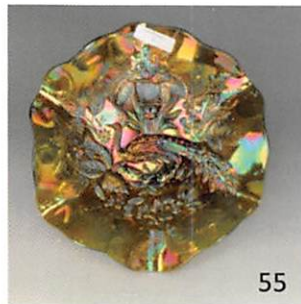
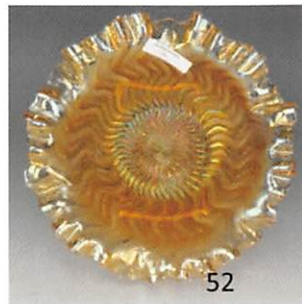


30

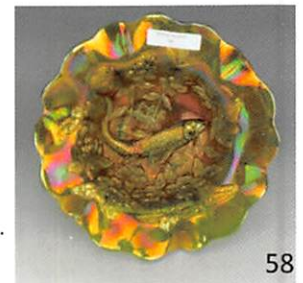


40

- 41) Millersburg Green Whirling Leaves Bowl; Tri-Corner with Crimped edge and amazing colors in iridescence.
- 42) Millersburg Green Tracery Square Bonbon; Measures 8" across - this is a scarce pattern
- 43) Millersburg Green Tracery Oval Bonbon; Beautiful colors on this piece of Carnival Glass, measures 8.5" across widest side
- 44) Millersburg Amethyst Poppy Compote; Exterior pattern is Potpourri, Lovely
- 45) Millersburg Amethyst Hobstar & Swirl Rosebowl; Very nice
- 46) Millersburg Amethyst Leaf & Little Flowers Compote; Radium & beautiful!
- 47) Millersburg Olive Green Knight Star Bonbon; High Radium finish and Gorgeous! Unique Oval Shape
- 48) Millersburg Marigold Leaf & Little Flowers Compote; Sweet and adorable!
- 49) Millersburg Marigold Leaf & Little Flowers Compote; Flared top and beautiful radium finish.
- 50) Millersburg Marigold Little Stars Ice Cream Bowl; Measures 8.5" across - lovely



- 51) Millersburg Amethyst Courthouse Bowl; High Radium finish - Beautiful! measures 7.5" across.
- 52) Millersburg Marigold Zig Zag Ruffled Bowl; Crimped edge with radium finish, very nice
- 53) Millersburg Green Many Stars Bowl; Nice radium finish, 9.25" across
- 54) Millersburg Amethyst Many Stars 6 Ruffled Bowl; Nice Bowl at 9.75" across - beauty.
- 55) Millersburg Green Peacock Urn Mystery Bowl; High radium finish with Beautiful colors, is 9" across.
- 56) Millersburg Green Trout & Fly Bowl; Ice cream shape, with high radium finish, measures 8.5" across.
- 57) Millersburg Green Seaweed Ruffled Bowl; Measures 10.5" across, has a bit of light iridescence in middle of bowl, but still a wonderful piece



- 58) Millersburg Green Big Fish Bowl; Ruffled and a beautiful pressing, with high radium finish. Measures 8.25" across and scarce.
- 59) Dugan Purple Flowers & Frames Bowl; Pulled up Bowl with amazing iridescence - Beautiful, measuring at 8" wide and 5.5" tall.
- 60) Dugan Amethyst Dogwood Sprays Bowl ; Amazing colors inside, with electric iridescence; measures 7.25" tall and 5.25" across top.

- 61) Dugan Amethyst Round Up Bowl; Ice Cream Shape with electric iridescence, measures 8.75" across
- 62) Dugan Amethyst Cherries Sauce; Vibrant colors, candy ribbon edge, measures 5.25" across & is stunning
- 63) Dugan Amethyst Flowers & Frames Bowl; Electric iridescence. 10 ruffles and 9" wide
- 64) Dugan Amethyst Cherries Footed Bowl ; Ruffled edge, with great iridescence - measures 8.5" across.
- 65) Dugan Amethyst Apple Blossom & Twig Bowl; Ruffled and radiant; measures 8.75" across.

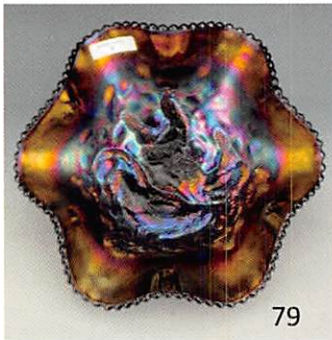


- 65a) Dugan Amethyst Border Plants Bowl ; Beautiful with electric iridescence! 3 in 1 edge, measures 9" across
- 66) Dugan Amethyst Persian Garden Fruit Bowl & Base; Outstanding color, the BEST I have seen! Top of bowl measures 10" wide. Amazing! A must for the collector

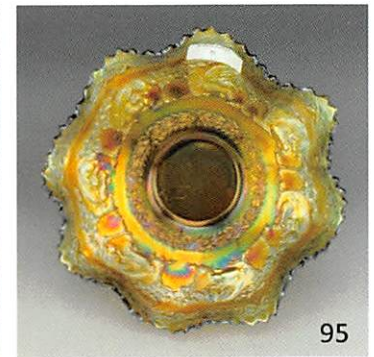
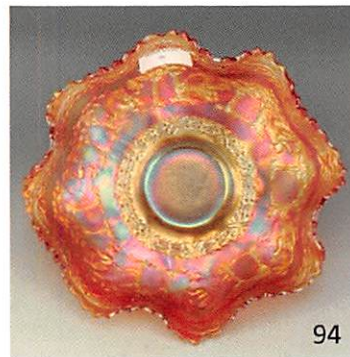
- 67) Imperial Amethyst Sand & Shell Bowl; Stunning electric iridescence; Measures 7.75" across. Beautiful!
- 68) Northwood Horehound Peacock on Fence Bowl; Pie Crust Edge, Absolutely Beautiful! Is 9" across
- 69) Fenton Marigold Dragon's Tongue Bowl; Scarce! 10.5" across - light iridescence in middle
- 70) Fenton Red Dragon & Lotus Bowl; Ice Cream Shape, always a collector's favorite - 8.5" wide.
- 71) Northwood Blue Peacock at Fountain Compote; Electric Blue! - Scarce - a beauty!
- 72) Dugan Horehound Puzzle Compote; Rare! Quite an awesome piece.



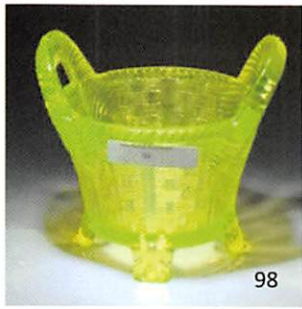
- 73) Imperial Purple Loganberry Vase; Has blue and yellow electric iridescence – Outstanding find.
- 74) Northwood Emerald Green Corn Vase; Has Stalk Base, beautiful color and a nice vase.
- 75) Northwood Amethyst Tornado Vase; Small size and has great color.



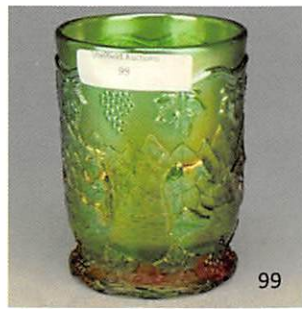
- 76) Northwood Blue Poppy Show Bowl; Electric and Ruffled - 9" across
- 77) Northwood Smoke Peacock on Fence Bowl; Ruffled and Rare color in this pattern; measures 9" across
- 78) Fenton Red Orange Tree Bowl; Beauty! Ice Cream Shape, Bearded Berry exterior - measures 8.25" across
- 79) Dugan Purple Farmyard Bowl; 6 Ruffle and measures 10.5" a bit of missing iridescence, however, very nice bowl
- 80) Fenton Red Leaf Chain Bowl; Ruffled and 7.25" across, nice and pretty.
- 81) Northwood Emerald Green Rose Show Plate; Great! measures 9.5" wide. Beautiful
- 82) Fenton Red Orange Tree Bowl; Gorgeous, Ruffled and 9" wide
- 83) Northwood White Acorn Burrs Punch Set; Frosty and gorgeous. Bowl, base and 6 cups
- 84) Northwood Custard w/Pink Stain Tree Trunk Elephant Foot Vase; Pink Stain on top and Nutmeg Stain on Main part of vase. Extremely Rare! Measures 13" tall, 7" across top with a 5.5" base. Awesome find. Not iridized. Only one we have found reported.
- 85) Northwood Custard w/Blue Stain Tree Trunk Funeral Vase, Fabulous with only a handful found. Measures 19.5" tall, 7.5" across top with a 5.5" base. Not iridized.
- 85a) Fenton Red Roses Lamp; Fantastic! Beautiful! Measures 36" tall – Rare, rare in this height - an amazing lamp for any collector! Outstanding iridescence! Image on back cover!
- 86) Northwood Aqua Opal Peacock on Fence Bowl; Pie Crust edge and measures 9" wide - RARE!!! a beauty!
- 87) Fenton Moonstone w/Marigold Dragon & Lotus Bowl; ICS measures 8" across, Scarce with beautiful iridescence.
- 88) Fenton Moonstone/Marigold Holly Bowl; 3 - 1 edge, gorgeous! 9" wide. Beautifully iridized
- 89) Fenton Moonstone/Marigold Peacock Urn Bowl; Ruffled and lovely, measures 9" across. Nice iridescence.
- 90) Northwood Custard/ Marigold Grape & Cable Plate; White Custard, Rare, Stippled and is the only one reported. 7.25" across with amazing iridescence.
- 91) Northwood Custard Pearlized Peacock on Fence Bowl; Gold edge applied and ruffled - outstanding pastel colors in the iridescence. Measures 9" across, Very Scarce!
- 92) Fenton Amethyst Dragon & Strawberry Bowl; Ice Cream Shape, measures 9" wide, Beautiful & Scarce.



- 93) Fenton Blue Peter Rabbit Bowl; A must have! Rare - Ice Cream Shape, measures 8.25" across. Has open bubble on base as shown - A great find.
- 94) Fenton Marigold Peter Rabbit Bowl; Ruffled and awesome! in excellent condition and Rare! Measures 9" across. A great find.
- 95) Fenton Green Peter Rabbit Bowl; Ruffled and 9" wide. Has best pressing I have ever seen; great mold work. A must have.
- 96) Fenton Vaseline Opal Fenton Flowers Rosebowl; Also known as Orange Tree. Super Rare, only one reported. Great bowl in great condition.
- 97) Northwood Green Lovely Flared Bowl; Emerald Green with Leaf & Beads Exterior, measures 8.25" across. Gorgeous!



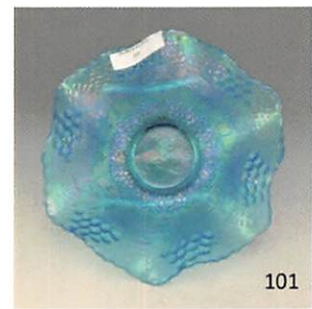
98



99



100



101

- 98) Northwood Vaseline Bushel Basket; RARE!! Round with outstanding colors.
- 99) Cambridge Green Frolicking Bears Tumbler; **Super Rare!** with great iridescence.
- 100) Imperial Purple Cone & Tie Tumbler; **Very Rare.** The blue and yellow rich iridescence is second to none. Slightly taller than the average tumbler.
- 101) Fenton Celeste Blue Mirrored Lotus Bowl; Only Ruffled shape reported in this color. Very RARE, has a chip on base. Exterior pattern Horse Chestnut
- 102) Fenton Celeste Blue Orange Tree Master Berry Bowl; RARE! Only one reported! has Excellent iridescence; chip on two of the toes. Great find
- 103) Lancaster Marigold Creole Giant Rosebowl; Very Scarce! Not very many out there. A great piece to add to your collection.
- 104) Imperial Yellow Zippered Heart Whimsey; Made from a Giant Rosebowl. Very unique at 10" across the top. Beautifully iridized. **Very Rare;** Only one reported.
- 105) Millersburg Green Hobstar & Feather Giant Rosebowl; Scarce and very desirable! Beautiful iridescence all over - a Great piece to own. In Great condition.
- 106) Northwood Pumpkin Marigold Hearts & Flowers Plate; Absolutely Gorgeous - Wonderful iridescence on the vintage Plate.



102

103

104

105

- 107) Shells Hatpin; Scarce. Very beautiful and elegant. Vintage & Iridized.
- 108) Teal Horned Owl Hatpin; Scarce, could not find any information for a Teal one. This hatpin has gold eyes and beck.
- 109) Dark Flying Bat Hatpin; The bat and stars are Iridized with amazing purples & yellows. A must have for the hatpin collector. Very Desirable.
- 110) Cupid & Flowers Hatpin; Beautiful Blue iridescence - Very RARE! An amazing addition to your hatpin collection.
- 111) Black Horned Owl Hatpin; Not iridized - wonderful hatpin.
- 112) Black Fancy Beetle Hatpin; Not iridized. Great hatpin.
- 113) Black Lizard or Newt Hatpin; RARE! Not iridized - very unique!
- 114) Dark Flying Bat Hatpin; The bat and stars are Iridized with amazing greens & blues. A must have for the hatpin collector. Very Desirable.
- 115) Northwood Ice Blue Corn Vase; Very Frosty, one of the best out there!
- 116) Northwood Blue Corn Vase; RARE! Only 3 or 4 reported, Very Beautiful!
- 117) Northwood Sapphire Corn Vase; Has beautiful colors in iridescence. Gorgeous.
- 118) Northwood Aqua Opal Corn Vase; Butterscotch Finish - Rare! Amazing! Outstanding! The Best in Aqua Opal.
- 119) Northwood Green Tree Trunk Funeral Vase; Has beautiful iridescence. Scarce and high in demand, measuring 8" across top, 18" tall and has a 5.25" base
- 120) Northwood White Tree Trunk Funeral Vase; Pastel blues & pinks from top to bottom on this Frosty Vase, Scarce measuring 6.5" across top, 16" tall with a 5.25" base. Manufacturing defects, still an awesome find
- 121) Imperial Purple Chrysanthemum Chop Plate; Exquisite colors with yellows and blues dancing across the front. Highly desirable & scarce. Measures 10" across.



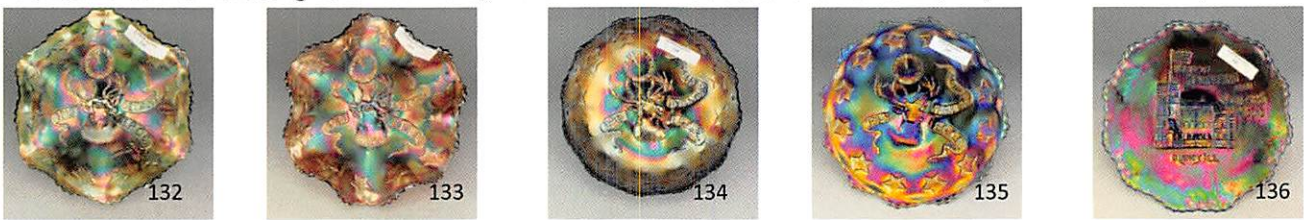
117

118

- 122) Fenton Celeste Blue Horse Medallion Ruffled Bowl; Very Rare in this color. Has incredible iridescence. The stretch effect on this bowl is amazing, one of the best pieces of carnival glass I have ever seen. A must have for the Celeste collector.
- 123) Northwood Green Town Pump; One of the better ones that we have seen. Very Scarce and In Demand.
- 124) Northwood Amethyst Town Pump; Electric iridescence - gorgeous and very desirable.
- 125) Northwood Marigold Town Pump; Pumpkin iridescence - beautiful and desirable



- 126) Northwood Amethyst Grape & Cable Master Punch Set; This set is far above average with great colors inside and out. This is a 14 piece set with bowl, base and 12 cups. Highly desirable. This set is a Beauty!
- 127) Fenton Marigold Little Flowers Chop Plate; Amazing plate with very nice iridescence measuring at 10" across.
- 127a) Imperial Purple Homestead Chop Plate; The rich purple and green iridescence will knock your socks off! This one is a Beauty - measures 10" across
- 128) Dugan Amethyst Wishbone & Spades Chop Plate; Glows with electric iridescence - awesome plate, measures 10.5" across.
- 129) Dugan Marigold Garden Path Variant Chop Plate; Beautiful iridescence, with a Soda Gold exterior. Measures 11" across. Lovely
- 129a) Fenton Blue Birds & Cherries Bowl; RARE! Ice Cream Shape, made from a chop plate measuring at 9.75" across. Gorgeous!
- 130) Northwood Green Hearts & Flowers Plate; An Absolute Beauty! measures 9" across
- 131) Northwood Horehound Peacock on Fence Plate; Excellent color! Has ribbed back - measures 9" across
- 132) Fenton Green Detroit Elk 1910 Bowl; This was a museum piece and numbered. Ruffled & 7" across - a good one.
- 133) Fenton Amethyst Detroit Elk 1910 Bowl; Has nice color, ruffled and 7" across - Commemorative
- 134) Fenton Blue Atlantic City Elk 1911 Bowl; Ice Cream, measures 6.75" across and has nice color.
- 135) Fenton Blue Parkersburg 1914 Elk Plate; This one is a Screamer! Beautiful at 7.5" across, they didn't make them any better.



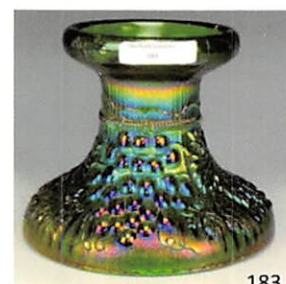
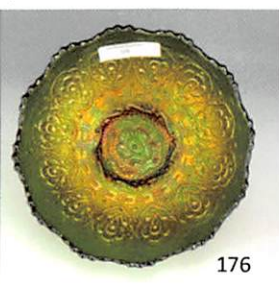
- 136) Fenton Blue Illinois Soldiers & Sailors Home Plate; Beautiful iridescence, measures 7.5" across
- 137) Fenton Marigold Leaf Chain Plate; Pumpkin iridescence, dark and just beautiful - measures 9.5" across
- 138) Fenton Amethyst Leaf Chain Plate; Iridescence is dark and gorgeous, measures 9.5" across
- 139) Northwood Blue Stippled Three Fruit Plate; Best on I have ever laid my eyes on. It is Beautiful! measures 9" across
- 140) Imperial Purple Scroll Embossed Plate; Has rich electric iridescence, this plate lacks nothing! Beautiful! measures 9.25" across
- 141) Imperial Smoke Shell Plate; Beautiful Electric Purples, Yellows, & Blues in this glowing plate - measures 9.5" across
- 142) Northwood Green Nippon Plate; Electric Yellow iridescence, second to no other. Beautiful and 9" wide.
- 143) Northwood Amethyst Hearts & Flowers Plate; Deep Rich Purple with electric highlights, 9" across
- 143a) Northwood White Good Luck Plate; Excellent colors, and Extremely RARE! Measures 9" across
- 144) Northwood Blue Stippled Peacock on Fence Plate; WOW!!! Electric cannot begin to describe this plate, Stunning, I have never seen any better, measures 9" across.
- 145) Fenton Blue Orange Tree Plate; The best electric iridescence out there, none any better. Measures 9.25" across.
- 146) Fenton Marigold Hearts & Vines Advertising Plate; "Compliments of Spector's Department Store" Very scarce, a beautiful piece of advertising. Measures 9.5" wide.
- 147) Northwood Marigold Poppy Show Plate; Beautiful Radium Iridescence, A Must have at 9.5" across.
- 148) Northwood Blue Rose Show Plate; Electric Highlights throughout. Very Pretty. Measures 9.25" across
- 149) Northwood Blue Poppy Show Plate; Electric Blue from one edge to the other, just stunning. Measures 9.25" across.
- 150) Fenton Blue Peacock at Urn Plate; Gorgeous with incredible color, one of the best I have ever seen in this pattern; 9.25" across.

# Tampa Bay Carnival Glass Club Convention Auction continues

Saturday, January 28, 2023 at 9:30 AM EST

## With the Ron & Judy Britt Collection

- 151) Northwood Green Grape & Cable Tumbler; Good condition, very pretty
- 152) Northwood Pearlized Custard Grape & Cable Tumbler; Iridized glass, good condition, very nice!
- 153) Fenton Blue Orange Tree Tumbler; dazzling with electric highlights! Good condition.
- 154) Northwood Amethyst Dandelion Tumbler; stunning electric blue iridescence! Good condition.
- 155) Northwood Electric Blue Peacock Fountain Tumbler; Carnival glass, stunning electric blue iridescence! Good condition.
- 156) Northwood Blue Grape & Gothic Arches Tumbler; Stunning iridescence! Good condition.
- 157) Northwood Amethyst Oriental Poppy Tumbler; Remarkable electric blue iridescence! Good condition.
- 158) Dugan Blue Ramble Rose Tumbler; Very nice and in good condition!
- 159) Imperial Purple Chatelaine Tumbler; Scarce with gorgeous electric blue iridescence! Good condition.
- 160) Fenton Amethyst Fluffy Peacock Tumbler; Good condition, fabulous!
- 161) Northwood White Grape Arbor Tumbler; Beautiful pastel iridescence! Good condition.
- 162) Fenton Blue Floral Grape Tumbler; Screaming electric blue iridescence! Good condition, best I've seen!
- 163) Northwood Blue Singing Bird Mug; Good condition, classic keeper!
- 163a) Northwood Lavender Grape & Cable Tumbler; stunning brilliance! Good condition. "Rene Barnhart 35 years of August 1910".
- 164) Fenton Red Blackberry Spray 4 Sides Up Hat; shiny as can be! Good condition.
- 165) Fenton Red Blackberry Spray Ruffled Hat; good condition, luminous and lovely!
- 166) UK Golden Wedding Whiskey & Shot Glass; With original box, extremely scarce in this great condition!, vintage at it's finest!
- 167) Northwood Blue Opal Beaded Cable Rosebowl; repair on foot, but very scarce! Lovely as can be.
- 168) Northwood Aqua Opal Beaded Cable Rosebowl; good condition, great color!
- 169) Northwood Aqua Opal Leaf & Bead Rosebowl; good condition, soft and warm appeal with this glorious piece!
- 170) Fenton Sapphire Open Edge Ruffled Basket; good condition, fabulous color, just splendid!
- 171) Fenton Vaseline Open Edge JIP Basket; Basketweave back, good condition, very nice!
- 172) Fenton Red Open Edge JIP Basket; good condition, radiant and passionate color!
- 173) Fenton Sapphire Open Edge 4 Sides Up Basket; good condition, magnificent color!
- 174) Fenton Vaseline Blackberry 2 Sides Up Basket; good condition, glamorous as can be!
- 175) Fenton Celeste Blue Open Edge 4 Sides Up Basket; good condition, heavenly color, what a dream!!

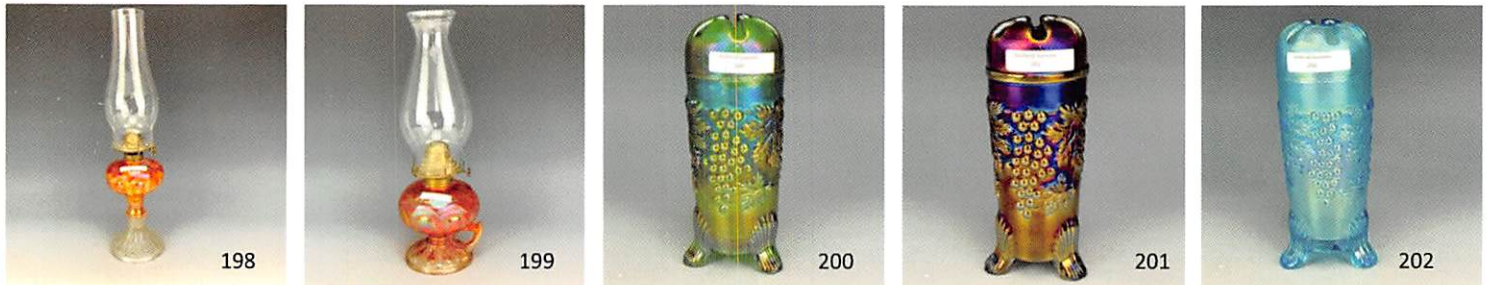


- 176) Fenton Green Persian Medallion Bonbon; Good condition, carnival glass, fabulous as ever!
- 177) Fenton Sapphire/Teal Persian Medallion Bonbon; good condition, fabulous and fancy!
- 178) Fenton Custard Prayer Rug Bonbon; Good condition, marvelously decadent! Scarce and iridized!
- 179) Fenton Green Persian Medallion Bowl; stunning! 6.5" wide and scarce! Good condition.
- 180) Northwood Aqua Opal Bushel Basket; Gorgeous and round! in good condition.
- 181) Northwood Light Lavender Bushel Basket; round and very pretty!! Good condition.
- 182) Northwood Ice Green Bushel Basket; good condition, exquisite color, very classy!
- 183) Northwood Emerald Green Grape & Cable Punch Base; Stippled! Table size, best I've ever seen! Good condition
- 184) Northwood Ice Blue Grape & Cable Fernery; Very Scarce and extremely beautiful!!
- 185) Northwood White Grape & Cable Fernery; Hard to come by and oh so fancy! Good condition. Carnival glass at it's finest!

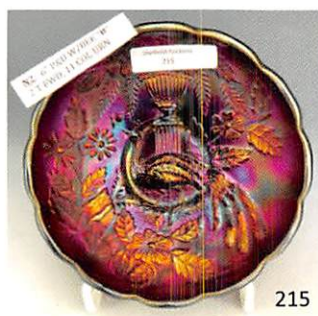
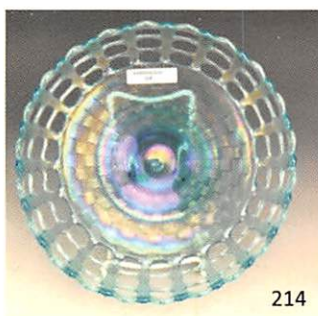




- 186) Northwood Amethyst Grape & Cable Cracker Jar; Great iridescence! Beautiful as ever and in good condition.
- 187) Imperial Purple Flute Celery; Open bubble inside, extremely hard to find, quite the beauty!
- 188) Imperial Purple Flute Water Pitcher Set; Includes two tumblers, flea bite on base as shown, oh so sleek & desirable!
- 189) Imperial Purple Flute Breakfast Set; Cream & Sugar in good condition, pure as gold!
- 190) Imperial Purple Heavy Grape Water Carafe; Electric yellow and blue throughout! Good condition, dazzling appeal, very alluring!
- 191) Imperial Purple Heavy Grape Wine Set; Decanter, 5 wines with stopper, absolute screamer! Good condition.
- 192) Imperial Purple Grape Bowl; 7" wide, killer iridescence! Good condition.
- 193) Imperial Purple Windmill Sauce; Good condition, 4.75" wide, screaming beauty!
- 194) Imperial Purple Scroll Embossed Plate; good condition, 9.25" wide, just a beauty!
- 195) Northwood Emerald Green Sunflower Bowl; good condition, 8.75" wide, very pretty and radiant!
- 156) Northwood Amethyst Town Pump; Always a collector's choice! Always in demand! Good condition. What a dream!
- 197) Millersburg Amethyst Sunflower Pin Tray; Always in demand and hard to find! Carnival glass at it's finest!
- 198) Imperial Marigold Zipper Loop Lamp; good condition, 9" tall and quite the captivating royalty!
- 199) Imperial Marigold Zipper Finger Loop Lamp; Good condition, 7" tall and oh so dreamy! A real gem!
- 200) Northwood Emerald Green Grape & Cable Hatpin Holder; good condition, such a stunner!
- 201) Northwood Purple Grape & Cable Hatpin Holder; good condition, such a stunning find! Electric iridescence!
- 202) Northwood Ice Blue Grape & Cable Hatpin Holder; Scarce royalty! Good condition, carnival glass, a true love!!



- 203) Northwood Blue Drapery Rosebowl; good condition, fabulous find!
- 204) Northwood Amethyst Nautilus Vase; Such a beauty! Not a common shape for this pattern, take a look at this one!
- 205) Northwood Green Grape & Cable Powder Jar; good condition, fabulous, electric find!
- 206) Dugan Purple Lattice & Points Ruffled Bowl, 7" wide, hard to find shape! So very radiant and quite coveted!!
- 207) Imperial Smoke Rococo Vase; 4.5" tall beauty! Oh my, what a royal treasure! Very elegant pattern.
- 208) Imperial Purple Heavy Grape Bowl; Gorgeous electric green iridescence! 6.5" wide
- 209) Northwood Aqua Opal Drapery Rosebowl; beautiful and elegant!
- 210) Fenton Reverse Amberina Strawberry Bonbon; 6.25" wide and drop dead gorgeous!
- 211) Fenton Electric Blue Sailboat Bowl; good condition and 6.25" wide, one of the prettiest!
- 212) Fenton Red Sailboat Bowl; good condition and 6" wide. Super pretty!
- 213) Fenton Red Persian Medallion Bonbon; good condition, 7" wide, remarkable beauty!
- 214) Fenton Celeste Blue 3 Row Open Edge Bowl; 8.75" wide, luxurious as can be!
- 215) Northwood Amethyst Peacock and Urn Sauce; 5.5" wide and elegant as ever!
- 216) Northwood Amethyst Peacock and Urn Sauce; 5.5" wide and an ultimate classic beauty!



- 217) Northwood Blue Stippled Peacock & Urn Sauce; 5.5" wide, a stunning beauty!
- 218) Northwood Custard Stippled Peacock & Urn Sauce; Beautiful Pearly Iridescence, 5.25" wide, only one reported! special find!
- 219) Northwood Aqua Opal Peacock & Urn Sauce; 5.75" wide, very rare and very beautiful!
- 220) Northwood Pumpkin Marigold Peacock & Urn Plate; Awesome pumpkin finish! 6.25" wide, scarce and unbelievable glamour!
- 221) Millersburg Blue Peacock & Urn Bowl; 5.5" wide, good condition, very scarce in ICS! Lovely!!
- 222) Northwood Electric Blue Peacock & Urn Sauce; 5.5" wide, oh so deep and bold electric highlights!!
- 223) Millersburg Marigold Peacock & Urn ICS Bowl; good condition, 5.75" wide, no bee, remarkable and oh so vivid!
- 224) Millersburg Green Peacock & Urn Bowl; 5.75" wide, high radium, no bee, divine beauty!!
- 225) Millersburg Amethyst Peacock & Urn Bowl; High radium, 5.5" wide, no bee, good condition, flawless beauty!!
- 226) Millersburg Amethyst Peacock & Urn Shotgun Berry Bowl; Whimsey Proof 5.5" wide, chip on base, radium, no bee or urn. Gleaming with beauty!
- 227) Millersburg Marigold Peacock Shotgun Proof Bowl; Whimsey with Break in leg, no urn, 5.25" wide, lavish and lovely!
- 228) Millersburg Amethyst Peacock Variant Bowl; No bee, 6" wide and in good condition, sumptuous and lively as ever!!
- 229) Millersburg Amethyst Peacock & Urn Variant Bowl; 5.75" wide and quite the fair and refined piece!
- 230) Millersburg Amethyst Peacock & Urn Proof Variant; 5.25" wide and oh so gallant and graceful!
- 231) Millersburg Marigold Peacock & Urn Variant Plate; Scarce 6.25" wide beauty! no bee, Very impressive!
- 232) Millersburg Amethyst Peacock & Urn Variant Plate; scarce, no bee 6.25" wide and strikingly beautiful!
- 233) Fenton Blue Peacock & Urn ICS Bowl; 8" wide, ELECTRIC BLUE! Breathtaking!
- 234) Millersburg Green Peacock Bowl; 9.25" wide, no bee, highly radium and gracefully poised!
- 235) Northwood Marigold Peacock & Urn Ruffled Bowl; Awesome dark finish on this piece, 10.25" wide, stunning and expressive!
- 236) Millersburg Green Peacock & Urn ICS Bowl; 10" wide and very enchanting!
- 237) Northwood Amethyst Peacock & Urn Bowl; 10.75" wide, gorgeous iridescence!.
- 238) Millersburg Green Peacock 3/1 Edge Bowl; no bee, 10" wide, high radium and noteworthy attractiveness!!
- 239) Northwood Marigold Stippled Peacock & Urn ICS Bowl; 10" wide, refined perfection!
- 240) Northwood Amethyst Peacock & Urn Chop Plate; scarce, 10.5" wide, expressive and oh so grand!
- 241) Millersburg Green Peacock & Urn Shotgun 3/1 Edge, no urn, high radium, 7.5" wide. Radiant royalty!
- 242) Millersburg Amethyst Peacock & Urn Shotgun Bowl, 7.5" wide, high radium, exquisite beauty!
- 243) Millersburg Amethyst Peacock Urn 3/1 Edge Bowl; 6" wide, no bee, pretty and poised!
- 244) Millersburg Marigold Peacock & Urn Bowl; 9.25" wide, no bee, blue radium iridescence, stunning!
- 245) Millersburg Amethyst Peacock & Urn Bowl; no bee, 9.25" wide, radium finish, just super! Very handsome.
- 246) Millersburg Marigold Peacock & Urn Compote; 8.5" wide and very scarce! A super special treasure!
- 247) Millersburg Green Peacock & Urn Compote; Very enticing, 9" wide, scarce, Incredible beauty!
- 248) Fenton Electric Blue Peacock & Urn Plate; Stunningly ELECTRIC! 9.25" wide and in good condition.
- 249) Fenton Marigold Peacock & Urn Plate; Electric highlights, 9.25" wide Carnival glass at it's best!
- 250) Northwood Marigold Grape & Cable Whiskey Set; 6 tumblers included, scarce as can be! Extravagant and exceptional set!



240

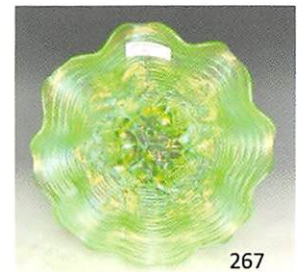


249

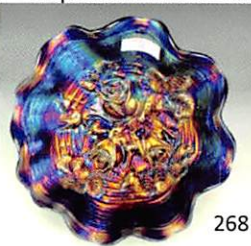
- 251) Northwood Blue Stippled Grape & Cable Punch Set; 8 piece, beautiful, table size, Exciting character!
- 252) Northwood Marigold Stippled Grape & Cable Punch Set; 8 piece, inspiring and oh so incredible!
- 253) Northwood Electric Blue Grape & Cable Fruit Bowl; stippled and banded, 10.75" wide, Amazing brilliance!
- 254) Northwood Green Good Luck Ruffled Bowl; 9" wide, scarce, emerald as can be! Quite desirable!
- 255) Northwood Aqua Hearts & Flowers Bowl; 10" wide with one of a kind beauty!
- 256) Northwood Blue Good Luck Stippled PCE Bowl; electric yellow and blues! 9" wide Favorable and incredible color!
- 257) Northwood Blue Good Luck Ruffled Bowl; 9" wide, stunning yellows and blues! Provoking character!!
- 258) Northwood Amethyst Good Luck Ruffled Bowl; 9" wide, breathtaking!
- 259) Northwood Electric Blue Good Luck Ruffled Bowl; a stunner! 9" wide. Ribbed back, electric from one edge to the next!
- 260) Northwood Pastel Marigold Good Luck Ruffled Bowl; such a stunner! 9" wide, one of the best pastels ever!
- 261) Northwood Electric Blue Good Luck PCE Bowl; 9" wide, remarkably gorgeous! Ribbed exterior.
- 262) Northwood Ice Blue Hearts & Flowers Ruffled Bowl; 8.75" wide and just charming and magical!
- 263) Northwood Marigold Stippled Three Fruit Bowl; 9" wide, pumpkin colors so deep and bold! and so impressive!
- 264) Northwood Pastel Marigold Stippled Good Luck Plate; 9" wide, glamorous and graceful!
- 265) Northwood Green Rose Show Plate; 9.75" wide, electric highlights that scream brilliance!!
- 266) Northwood Marigold Poppy Show Plate; 9.75" wide, electric, regal, refined royalty!!
- 267) Northwood Green Rose Show Ruffled Bowl; 9" wide and unbelievably impressive! So, so pretty!
- 268) Northwood Electric Blue Rose Show Ruffled Bowl; 8.75" wide and so very fascinating! Just flawless!
- 269) Northwood Emerald Green Rose Show Ruffled Bowl; 9" wide, lively and sparkling with character!
- 270) Northwood Pumpkin Marigold Rose Show Ruffled Bowl; 9" wide, exquisite beauty!
- 271) Northwood Aqua Opal Rose Show Ruffled Bowl; 9" wide and oh so magical! Quite divine!
- 272) Northwood Marigold Rose Show Variant Bowl; 8.5" wide and just unreal color! Very vibrant!
- 273) Northwood Electric Blue Rose Show Variant Plate; 9" wide and very intense beauty!
- 274) Northwood Amethyst Rose Show Plate; 9.75" wide, electric iridescence! Heavenly beauty!
- 275) Imperial Amber Lustre Rose Plate; 9" wide and gleaming intensity!



266



267



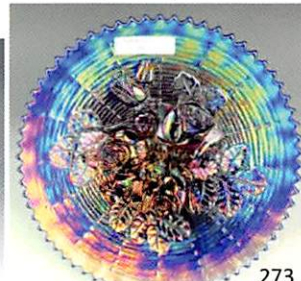
268



269



271



273



277

- 276) Fenton Emerald Green Peacock & Urn Bowl; 9" wide, electric blue highlights. Very pleasing & quite regal!
- 277) Northwood Custard Peacock & Urn Banana Boat Shape; 11" wide with nutmeg finish. Very impressive and handsome! Unique! Chop plate turned up on sides.

- 251) Millersburg Amethyst Tulip Scroll Vase; 7" tall and 3.5" wide base, quite scarce, thumbprint & curved lines, remarkable!
- 252) Northwood Pumpkin Leaf Columns Vase; 5.75" tall and 3.5" wide base, squatty vase, beautiful color!
- 253) Northwood Amethyst Tornado Vase; Mostly in good condition with chip on base, very pretty, small size, Lively beauty!
- 254) Northwood Lavender Tornado Vase; Carnival glass, scarce, good condition, exceptional treasure!
- 255) Northwood Ice Green Corn Vase; Carnival glass, yellow iridescence, very nice, good condition. Oh so lavish and lovely!
- 256) Imperial Marigold Mini Morning Glory Vase, 4.75" tall, 3.75" wide top and 2.5" wide base. A glorious gem!



280



281



282



283



- 284) Imperial Purple Mini Morning Glory Vase; 7.75" tall, 4" wide top and 2.5" wide base, scarce and beautiful as ever!
- 285) Northwood Green Tree Trunk Squatty Vase; 7" tall, 4.25" wide top with 3.5" wide base, squatty. Just fabulous!
- 286) Northwood Amethyst Thin Rib Jesters Cap Vase, 8" tall with 3.75" wide base and 5.75" wide top. Flawless and provoking beauty!
- 287) Imperial Purple Beaded Bullseye Vase; 7.5" tall and 3.5" wide base and 4.75" wide top, electric all over! Very attractive and quite charming!
- 288) Dugan Pumpkin Marigold Big Basketweave Vase; unswung, 5" tall with 3.25" base and 3.75" top, quite the looker! Very radiant!
- 289) Northwood Blue Four Pillars Squatty Vase; 7" tall with 3.25" wide base and 4.5" wide top, flea bite on one toe, very pretty! Good condition and so very heavenly!
- 290) Imperial Purple Ripple Vase; 8.75" tall with 3.75" wide base and 6" wide top, electric blue! Lavish and rich appeal!
- 291) Northwood Green Leaf Column Vase; 10.5" tall with a 3.5" wide base and 3.75" wide top. Noteworthy find! As grand as can be!
- 292) Dugan Sapphire Big Basketweave Vase; 10" tall with 3.25" wide base and 3.75" wide top, scarce and lovely as can be! Just a dream!
- 293) Northwood Amethyst Tree Trunk Squatty Vase; 7" tall with 3.5" wide base and 4" wide top, fabulous as ever! Oh so pretty!!
- 294) Dugan Purple Circle Scroll Vase; 9.5" tall with 2.5" wide base and 4" wide top, carnival glass at it's finest! Just spectacular!
- 295) Northwood Electric Blue Tree Trunk Vase; 9.5" tall with 3.5" wide base & 4.5" wide top. Striking, electric colors with so much class!!
- 296) Northwood Lavender Leaf Column Vase; 10.5" tall with 3.5" wide base and 3.75" wide top. A treasure of a gem! Just super!
- 297) Northwood Sapphire Tree Trunk Vase; 9.5" tall with 3.5" wide base and 4.25" wide top, scarce carnival glass! Golden and glamorous royalty!! Just so pretty!
- 298) Northwood Ice Blue Tree Trunk Vase; Very frosty appeal! 10.5" tall with 3.5" wide base & 3.5" wide top. Such divine and heavenly color!
- 299) Millersburg Green Four Pillars Advertiser Vase; 11.75" tall with 4" wide top and 3.25" base, "Howard Furniture Company 100 & 111" on base. very distinctive, bright beauty!
- 300) Northwood Aqua Opal Marigold Tree Trunk Vase; 10.5" tall with 3.5" wide base and 3.5" wide top, very electric! Just look at this color, nothing compares! So gorgeous!!
- 301) Northwood Aqua Opal Tree Trunk Vase; Lots of pastel and opal from top to the base! 10.5" tall and 3.5" wide base and 3.25" wide top. Very appealing and impressive color!
- 302) Fenton Red Fine Rib Vase; Super red! 9.5" tall with 2.75" wide base and 4" wide top, lovely and vibrant color!
- 303) Imperial Lime Green Beaded Bullseye Vase; 8.75" tall with 3.5" wide base and 5.5" wide top, lovely as ever! Remarkably divine!!!
- 304) Dugan Marigold Woodlands Vase; 5.25" tall with 2.5" wide base and 2" wide top, dreamy! So vivacious! Some believe it was made by Westmoreland - Scarce.
- 305) Imperial Purple Morning Glory Funeral Vase; 16" tall with 5" wide base and 6.75" wide top. Unreal and eccentric color!
- 306) Imperial Marigold Morning Glory Funeral Vase; 13" tall with 5" wide base and 7.75" wide top. Just gallant and oh so handsome!
- 307) Northwood Sapphire Thin Rib Vase; 14" tall with 4.75" wide base and 6.25" wide top, very scarce and always in demand! gleaming with perfection!
- 308) Northwood Aqua Opal Diamond Point Vase; 11.25" tall with 3.5" wide base and 3.75" wide top, manufacturer split in base, very scarce and stunningly gorgeous!





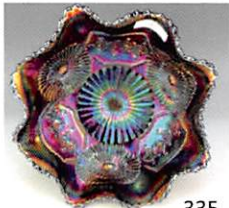
- 309) Northwood Amethyst Tree Trunk Vase; 12.75" tall with 4.5" wide base and 4.75" wide top, electric blues and purples! So very pretty and vibrant!
- 310) Northwood Marigold Tree Trunk Vase; Plunger bottom, 14" tall with 3.75" wide base and 6" wide top,, remarkable beauty and classy as ever!
- 311) Northwood Amethyst Tree Trunk Vase; 12.75" tall with 3.75" wide base and 6.25" wide top with plunger base. Exquisite beauty!
- 312) Northwood Amethyst Tree Trunk Vase; Very impressive and lovely! 13.5" tall with 4.75" wide base and 4.75" wide top
- 313) Northwood Green Tree Trunk Vase; 12.5" tall 4.75" wide base and 5.75" wide top, midsize and marvelously electric colors!
- 314) Northwood Ice Blue Tree Trunk Vase; 13.25" tall with 4.75" wide base & 4.75" top, midsize, scarce and in good condition. Fabulous and fancy!
- 315) Northwood Marigold Tree Trunk Vase; 11" tall with 4.75" wide base and 5.5" wide top, carnival glass, lovely as ever!
- 316) Northwood Amethyst Tree Trunk Funeral Vase; 18" tall, 5.25" wide base, 8" wide top, g. As beautiful as ever!
- 317) Northwood Marigold Tree Trunk Funeral Vase; 8.5" wide top, 20.5" tall, 5.25" wide base, extremely scarce! Lavish and lively!!
- 318) Northwood Electric Blue Tree Trunk Funeral Vase; 19.75" tall, 5.25" wide base, 7" wide top, good condition. Beautiful and vibrant!
- 319) Northwood Custard Nutmeg Tree Trunk Vase; 7" wide top, 18.5" tall, 5.25" wide base, Magical appeal! Very pretty.
- 320) Northwood Amethyst Elephant Foot Tree Trunk Vase; 12.5" tall, 7" wide top, 5.25" wide base. Stunner of a find!
- 321) Fenton Amethyst Rustic Plunger Funeral Vase; 9" wide top, 17.25" tall, 5" wide base. Breathtakingly gorgeous!
- 322) Fenton Green Rustic Plunger Funeral Vase; 8" wide top, 18.75" tall, 5" wide base, remarkable beauty!
- 323) Fenton Blue Rustic Funeral Plunger Vase; 7" wide top, 8.25" tall, 5" wide base. Very stunning!!
- 324) Fenton Amethyst Rustic Funeral Vase; 18" tall, 5.25" wide base, 7" wide top. Remarkably memorable iridescence!
- 325) Fenton Green Rustic Funeral Vase; 7.5" wide top, 18.75" tall, 5.25" wide base. Outstanding brilliance!



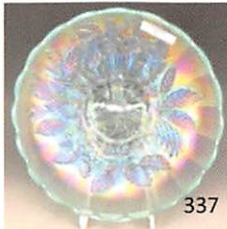
- 326) Fenton Marigold Rustic Funeral Vase; 19" tall, 7.5" wide top, 5.25" wide base. Bold and expressive!
- 327) Fenton White Rustic Funeral Vase; 8" wide top, back is 19" tall, front 14.25" tall, 5.25" wide base. Amazingly brilliant!
- 328) Fenton Electric Blue Rustic Funeral Vase; 7" wide top, 18.25" tall, 5.25" wide base. Flawless and glamorous!
- 329) Fenton Blue Diamond Rib Funeral Vase; 8" wide top, front is 15" tall, back is 18.25" tall, 5.25" wide base. Only a handful known is blue! Scarce! Small chip as shown. Rare! Gorgeous!
- 330) Northwood Pastel Marigold Master Punch Set; 14 piece set, this set came from the John Rogers collection to the Britts. Has blue iridescence making it very SCARCE!
- 331) Imperial Smoke Fashion Punch Bowl & Base; scarce to rare, has electric highlights on both! Best out there! Few of these bowls have ruffled tops & bases - can also be known as a Fruit Bowl.



331



335

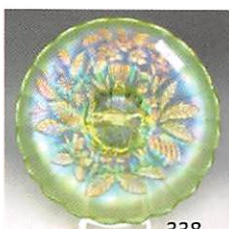


337

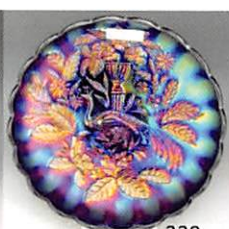


330

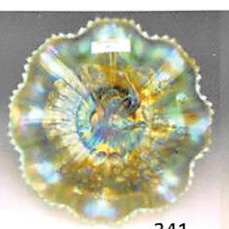
- 332) Northwood Amethyst Grape & Cable Tankard & Tumbler; Very nice color! Just brilliant!
- 333) Northwood Marigold Grape & Cable Tankard Set; 6 piece, Lovely as can be!
- 334) Northwood Marigold Grape & Cable Dresser Tray; Banded dresser tray. Precisely radiant and refined!
- 335) Fenton Electric Blue Mikado Compote; One of the best ones out there! Electric interior, Pure and lovely!
- 336) Dugan Purple Puzzle Bonbon; Electric iridescence inside and out! glorious as ever! Exterior pattern is Floral & Wheat .
- 337) Northwood Ice Blue Peacock & Urn ICS Bowl; 9.75" wide, covered in blue iridescence! Unreal appeal! Very lively!
- 338) Northwood Ice Green Peacock & Urn ICS Bowl; Pastel blue iridescence., stunning color!
- 339) Northwood Electric Blue Peacock & Urn ICS Bowl; 10" wide and very enchanting!
- 340) Northwood Blue Peacock & Urn Stippled ICS Bowl; 10" wide and oh so dazzling!
- 341) Northwood Aqua Opal Peacock at the Fence Bowl; 10" wide and ruffled, pastel colors. Gleaming and glamorous!
- 342) Northwood Ice Blue PCE Peacock at the Fence Bowl; 8.5" wide and captivatingly glorious color!
- 343) Northwood Ice Green Peacock on the Fence Bowl; 8.75" wide, ruffled, incredible vibrancy!
- 344) Northwood Aqua Opal Peacock on the Fence Bowl; 9" wide, ruffled and absolutely stunning!
- 345) Northwood Electric Green Peacock on the Fence Bowl; Ribbed and ruffled, 9" wide, a noteworthy treasure!
- 346) Northwood Amethyst Peacock on the Fence Bowl; 9" wide, killer blue and yellow iridescence. Striking as ever!
- 347) Northwood Marigold Peacock on Fence Stippled Bowl; PCE, pumpkin highlights, 9" wide. Glorious color!
- 348) Northwood Amethyst Peacock on the Fence Bowl; 8.5" wide, ribbed back and PCE. Radiant as ever! So beautiful!
- 349) Northwood Marigold Peacock on the Fence Bowl; 9" wide, best pastel seen, ribbed back, stippled and absolutely gorgeous! lovely soft notes! Beautiful!



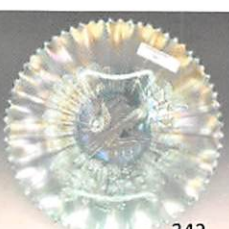
338



339



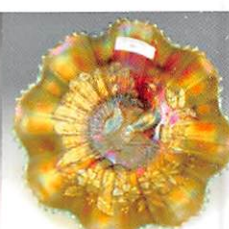
341



342



343



344

- 350) Fenton Blue Peacock & Grape ICS Bowl; 8.25" wide, a beauty! very nice and quite desirable! Bearded Berry exterior.
- 351) Imperial Purple Scroll Embossed Ruffled Bowl; 8" wide, exquisite perfection!
- 352) Fenton Amber/Red Horse Medallion Bowl; 6.5" wide, charming and inspiring!
- 353) Dugan Amethyst Six Petal Ruffled Bowl; 8" wide with electric interior and beauty all over!
- 354) Dugan Amethyst Cherries 3/1 Edge Bowl; 8.5" wide, electric colors! Very nice.
- 355) Fenton Blue Persian Medallion Plate; 6.25" wide with metallic iridescence! Very beautiful!
- 356) Fenton Amethyst Persian Medallion Plate; 11.25" wide, electric highlights, lovely as can be!
- 357) Fenton Blue Persian Medallion Chop Plate; 10.5" wide, scarce and very vivacious! Absolutely gleaming!

- 358) Northwood Green Grape & Cable Stippled Plate; 8.25" wide, electric blues and oh so pretty!
- 359) Fenton Red Holly Ruffled Bowl; 9" wide. Shiny, bright and breathtaking!
- 360) Northwood Green Grape & Cable Ruffled Bowl; 8.75" wide with stippled interior. Fanciful and lively!
- 361) Northwood Pumpkin Grape & Cable PCE Bowl; 8.25" wide, stippled with beautiful pastels! Brilliant and impressive!
- 362) Northwood Blue Grape & Cable Stippled PCE Bowl; 8.75" wide and gracefully beautiful!
- 363) Northwood Marigold Grape & Cable Stippled Plate; 9" wide, best marigold I've ever seen!
- 364) Imperial Purple Heavy Grape Chop Plate; 11" wide, remarkable brilliance!
- 365) Northwood Amethyst Grape & Cable Bowl; thumbprint and 9" wide, spectacular!
- 366) Hocking Glass Red Peacock Lamp; 25.5" tall, stunningly rare! Gorgeous!
- 367) Northwood Green Grape & Cable Ruffled Bowl; 11" wide, beautiful as ever!
- 368) Northwood Green Grape & Cable Fruit Bowl; 10.5" wide and quite the show stopper!
- 369) Northwood Ice Blue Grape & Cable Fruit Bowl; 11" wide and luxurious, soft highlights!
- 370) Northwood Green Grape & Cable Fruit Bowl; 10.5" wide and very gorgeous!
- 371) Fenton Blue Grape & Cable Fruit Bowl; 10" wide, elegant as ever! Persian Medallion interior.
- 372) Northwood Blue Peacock at the Fountain Fruit Bowl; 10" wide with inner bubble in base. Remarkable beauty!



- 373) Northwood Green Grape & Cable Banana Boat; 12" wide and bright and bold!
- 374) Northwood Ice Green Grape & Cable Banana Boat; 12" wide, Awesome!
- 375) Northwood Amethyst Grape & Cable Banana Boat; 12" wide, unbelievable radiant color!
- 376) Fenton Blue Peacock & Urn Compote; lovely as ever!
- 377) Fenton Marigold Hearts & Flowers Ruffled Compote; 7" wide, remarkable and intricate!
- 378) Northwood Ice Blue Grape & Cable Cup & Sauce; 5.5" wide sauce, glorious pair!
- 379) Northwood Ice Blue Nippon PCE Bowl; 8.5" wide and fabulously pretty!



- 380) Northwood Ice Blue Drapery Whimsey Vase; 4" tall and 7" wide, breathtaking beauty!
- 381) Fenton Aqua Opal Hearts & Flowers Ruffled Compote; 6.5" wide, a fanciful dream!!
- 382) Northwood Amethyst Grape & Cable Cologne Bottle; with chipped stopper as shown, 9" tall, glorious!
- 383) Northwood Green Grape & Cable Cologne Bottle; 9" tall. Quite the vintage classic!

- 384) Northwood Emerald Green Leaf & Beads Rosebowl; lovely as can be!
- 385) Imperial Purple Diamond Lace Water Pitcher Set; Carnival glass, good condition, 7 piece total, stunningly gorgeous!
- 386) Fenton Lime Green JIP Hat Vase; Carnival stretch glass, gorgeous and smooth!
- 387) Fenton Vaseline Two Flowers Ruffed Bowl; 6" wide, good condition, dainty lil' treasure!



- 388) Fenton Marigold Kitten 2 Sides Up; adorable classic! 4.5" wide
- 389) Northwood Blue Bushel Basket; great color!
- 390) Northwood White 8 Sided Bushel Basket; lovely and dreamy!
- 391) Imperial Green Morning Glory Vase; 5" tall with 2.5" wide base and 3" top beautiful!
- 392) Imperial Smoke Morning Glory Vase; 7" tall and 2.5" wide base and 2" mouth. Very nice indeed!
- 393) Imperial Marigold Morning Glory Vase; 5.5" tall and 2.5" wide base and 2.5" mouth, stunning lil' miniature treasure!
- 394) Imperial Purple Morning Glory Vase; 5" tall with a 2.5" wide base and 2.75" wide top, smooth and radiant!
- 395) Imperial Marigold Morning Glory Vase; 8" tall with a 2.5" wide base and 2.5" wide top, fabulous find!
- 396) Dugan Marigold Golden Flute Vase; 9" tall with a 2.5" wide base and 2" wide top, 1930's beauty!
- 397) Fenton Marigold Paneled Diamond & Bows Vase; 7" tall with a 2.5" wide base and 3.25" wide top, glamorous as can be!
- 398) Fenton Blue Paneled Diamond & Bows Vase; 6.5" tall with a 2.5" wide base and 3" wide top, dazzling show stopper!
- 399) Northwood Purple Leaf Columns Vase; 9.75" tall with a 3.5" wide base and top, such a gem!
- 400) Dugan Peach Opal Pinched Swirl Spittoon; 5" wide and 4.25" tall, charming lil' treasure!

# Tampa Bay Carnival Glass Club Convention Auction

Proudly brought to you by:

***Sheffield Auctions***

January 27 & 28, 2023



Scott Sheffield, Principal Auctioneer  
904 Snow School Rd  
Albany, KY 42602  
606-306-1792 or 606-688-1410