

The Don Clark Collection

*International Carnival Glass
Association Convention*



Carnival Glass 2022 Auction

Open
to the
Public

Saturday, July 16, 9:30 a.m.

*Holiday Inn Airport West
Earth City, Missouri*



Seeck Auctions

Jim & Jan Seeck
641-424-1116



Jim & Jan Seeck

641-424-1116

SATURDAY, July 16, 2022 — 9:30 a.m.

Holiday Inn Airport West — Earth City, Mo. 63045

3400 Rider Trail South

FRIDAY PREVIEW

★ **ABSENTEE and LIVE BIDDING is available on-line through Auction Flex at: www.seeckauktion.com**

★ **NO BUYER'S PREMIUM -- EMAIL: jimjan@seeckauktion.com**

THE LATE DON CLARK COLLECTION

When we think of wild and crazy Carnival Glass collectors, and there has been several, one of the names that is mentioned is Don Clark. He definitely would be the spark of the convention by raising a few eyebrows. Donald and his partner, Jack Beckwith, were from Oregon (originally from California) and collected together for many years with Jack concentrating on opalescent glass and Don, Carnival Glass. Don had fabulous glass but if you would catch him in a quiet moment he would say he had fabulous glass because he enjoyed the conventions and the people at

the convention. Some of his best friends were Carnival Glass collectors. The "Love and Friendship" was the most important part to him. Don collected Carnival Glass for over 50 years, was very knowledgeable, and his taste was for very high quality glass. Every piece in this catalog could be "bolded." We have only bolded the pieces that are pictured next to the listing. Diversity is high in this auction as most shapes and most all makers of Carnival Glass are represented well! This will be the best collection ever sold at the ICGA convention — Do not miss it!

Don't forget: Contemporary Carnival Glass Online Only Auction #232 — Ends Thursday evening, July 14, beginning at 7 pm CST. (Glass from the Ron and Cheryl Austin Collection)

LODGING

If planning to stay at the hotel, reservations can be made by calling (314)291-6800. Mention you are with the ICGA to be included in the block. If you have questions about the convention, contact President Brian Pitman at: 785-274-9105 or email: bpitman@gmail.com Visit the ICGA Website: <http://www.internationalcarnivalglass.com>

Terms: Cash or Check, VISA, MasterCard and Discover accepted w/proper ID. **4% Clerking Fee** on all purchases made using credit cards. Announcements made day of sale take precedence over any printed information.

ABSENTEE BIDDING OPTIONS

- 1) **Call us by phone at: (641) 424-1116**
- 2) **Prebid: Enter your bids from our website into our online catalog through the Auction Flex system.**
 - *An exciting advantage of entering your bids online yourself, is the option to be notified by email if you are outbid on an item. You will know when you are outbid on an item and you can increase your bid on that item or bid on something else.*
- 3) **Live Phone Bidding: Is available on pieces with an estimated sale price of \$500 or more.**
If you would like to participate in live phone bidding, contact us by **the Thursday before the auction.**
- 4) **Real-time Bidding:** Bid live during the auction through Auction Flex live webcast bidding.

There is a \$7 handling charge for each successful bid. Shipping and insurance charges are additional.

Bidders will be notified by phone/email if their bid(s) are successful. This will be done 1 - 3 days after the auction.

BID INCREMENTS:

\$1 - \$100/\$5	\$100 - \$200/\$10	\$200 - \$700/\$25	\$700 - \$1,500/\$50
\$1,500 - \$3,000/\$100	\$3,000 - \$5,000/\$250	\$5000+ Auctioneer's Discretion	



^{16,000}
 ___ 21. Poppy Show 9" plate - aqua opal - this is one of the really pretty ones, extremely rare, a Northwood WOW!

___ 22. Poppy Show 9" plate - ice blue - very pretty irid., scarce

___ 23. Poppy Show 9" plate - white - nice

___ 24. Poppy Show 9" plate - green - super pretty, has heat check in base but rare color

___ 25. Poppy Show 9" plate - blue - scarce, nice

___ 26. Poppy Show 9" plate - marigold - beautiful

___ 27. Garden Path Variant chop plate - purple - holy cow, this is stunning, beautiful front and back! a Dugan WOW!



___ 28. Blossomtime ruffled compote - green - pretty example

___ 29. The State House of Indiana 7" plate - blue - extremely rare plate, very few known and this is beautiful, a Fenton WOW!

___ 30. The State House of Indiana 7" plate - marigold - beautiful and another extreme rarity, this one is out of the Fenton Museum



___ 31. Fruits & Flowers 10" ruffled bowl - ice green - super pretty

^{16,000}
 ___ 32. M'burg Wild Flower ruffled compote - Vaseline - only one known in the ruffled shape, only 2 known with no marigold overlay, fantastic piece of Millersburg!



___ 33. Orange Tree Orchard water pitcher & 1 tumbler- blue - a stunning piece of glass, there are super water pitchers in the sale, don't miss them



___ 34. Grape & Cable hatpin holder - aqua opal - super pretty example, not many known, from the Poucher Collection

___ 35. Grape & Cable hatpin holder - ice green - very tough color to find, rare!

___ 36. Grape & Cable hatpin holder - ice blue - very pretty example, rare

___ 37. S-Repeat 10 pc. punch set - purple - super pretty set, extremely rare

___ 38. Singing Birds mug - aqua opal - pretty example

___ 39. Singing Birds mug - ice blue - nice



___ 40. M'burg Morning Glory tankard water pitcher - amethyst - this has beautiful irid., an incredible piece, a graceful looking Millersburg pitcher

___ 41. M'burg Morning Glory tumbler - amethyst - super nice example, rare



___ 42. Stag & Holly chop plate - marigold - super pretty example, scarce

^{10,000}
 ___ 43. N's Pulled Husk corn vase - purple - an extremely rare Northwood vase, WOW!

___ 44. M'burg Seacoast pin tray - marigold - super nice example, hardest color to find





- ___ 1. Fine Cut & Roses rose bowl - aqua opal - super example, feet look good
- ___ 2. Fine Cut & Roses rose bowl - ice blue - nice, feet look good
- ___ 3. Fine Cut & Roses rose bowl - green - super nice, feet look good
- ___ 4. Fine Cut & Roses rose bowl - purple - fantastic, feet look good
- 50,000 ___ 5. M'burg Pipe Humidor - green - absolutely super in color & iridescence, extremely rare, only 3 or 4 known, this one is from the Whitley Collection
- 25,000 ___ 6. M'burg Pipe Humidor - amethyst - just beautiful! also extremely rare, awesome pieces of Millersburg glass!



- ___ 7. Windmill deep round bowl - marigold on moonstone - rare color, nice
- 8,500 ___ 8. N's Peacock at Urn master IC bowl - aqua opal - a stunning bowl! extremely rare, a Northwood must



- ___ 9. N's Peacock at Urn master IC bowl - green - another rare color, not many around
- 4,250 ___ 10. N's Peacock at Urn master IC bowl - ice green - very pretty iridescence
- ___ 11. N's Peacock at Urn master IC bowl - ice blue - super pretty example
- ___ 12. N's Peacock at Urn master IC bowl - white - nice
- ___ 13. N's Peacock at Urn 7 pc. ice cream set - purple - nice
- ___ 14. N's Peacock at Urn master IC bowl - marigold - nice



- 10,000 ___ 15. Farmyard 3 in 1 edge bowl - purple - fantastic! beautiful bowl in this hard to find 3 in 1 edge
- ___ 16. Acorn 7" plate - blue - very rare in the plate shape

- 20,000 ___ 17. Goddess of Harvest 3 in 1 edge bowl - marigold - an awesome piece of glass! extremely rare, WOW!
- ___ 18. Stippled & Banded Grape & Cable lg size fruit bowl - blue - super pretty, quite rare



- 15,000 ___ 19. M'burg Cleveland Memorial Ashtray - marigold - a beauty! extremely rare in marigold, just 3 or 4 known, from the Whitley collection



- ___ 20. Ten Mums 3 in 1 edge bowl - green - super! Don't miss out on these beautiful pieces!

- ___ 69. Rose Tree IC shaped bowl - marigold - also spectacular, from the Snell collection
- ___ 70. Fanciful 9" plate - purple - fantastic



- ___ 84. Amaryllis ftd plate - purple - fantastic irid.
- ___ 85. Orange Tree ladies spittoon - marigold - made from the powder jar bottom, there is a written note included which tells why it was made, only one known



- 31,000 ___ 71. M'burg Multi Fruits & Flowers water pitcher - green - only 1 or 2 known in green, another wonderful Millersburg pitcher
- ___ 72. M'burg Multi Fruits & Flowers tumbler - green - super pretty

- 300 ___ 85a. Orange Tree powder jar - lime green - extremely rare color for these, not many around
- ___ 86. Orange Tree powder jar - green - not only a rare color, but beautiful
- 325 ___ 87. Orange Tree powder jar - amethyst - another hard color to find, very nice

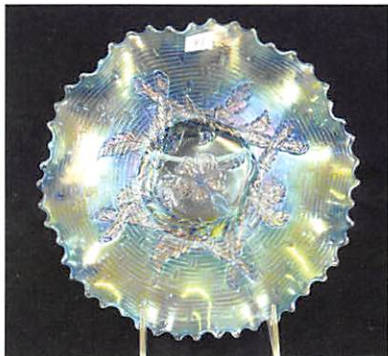
- ___ 73. Round Up 9" plate or low bowl - purple - beautiful
- 13,500 ___ 74. N's Corn vase w/stalk base - aqua opal - extremely rare & highly desirable, Wow!



- ___ 75. N's Corn vase w/stalk base - sapphire - extremely rare color, pretty
- ___ 76. N's Corn vase w/stalk base - ice blue - scarce color
- ___ 77. N's Corn vase w/stalk base - green - pretty, epoxied chip on top edge
- ___ 78. N's Corn vase w/stalk base - lime green - scarce color
- ___ 79. N's Corn vase w/stalk base - lime green w/ marigold overlay - hard to find combination
- ___ 80. N's Corn vase w/stalk base - purple - scarce
- ___ 81. N's Corn vase w/plain base - marigold - scarce
- ___ 82. N's Corn vase w/plain base - white - has light lavender tint w/pretty irid.



- ___ 88. M'burg Blackberry Wreath 10,000 chop plate - marigold - beautiful piece, not many known
- ___ 89. Turtle with snail covered dish - marigold - extremely rare novelty, very desirable & nice



- ___ 83. Apple Blossom Twigs low ruffled bowl - ice blue - extremely rare color, 1 of 2 known, super pretty irid.



- ___ 90. Acorn Burrs 8 pc. punch set - ice blue - very rare set, punch bowl & base are dark & pretty

- ___ 45. M'burg Seacoast pin tray - green - scarce, tiniest pinpoint on back of tip
- ___ 46. M'burg Seacoast pin tray - amethyst - always in demand



- ___ 47. Poppy Show vase - purple - a stunner with fantastic irid., an Imperial WOW!
- ___ 48. Poppy Show vase - smoke - another hard color to find plus has super irid.
- ___ 49. Two Flowers lg size ftd ruffled bowl - aqua - rare color, pretty

- ___ 50. Fern ftd 10" chop plate - marigold - only one known, super pretty, one of the top Fenton pieces!



- ___ 51. Grape & Cable master IC bowl - ice green - rare color, beautiful, the IC bowls were some of Don's favorites



- ___ 52. Grape & Cable master IC bowl - ice blue - super irid., one of the nicer examples, may be the rarest color
- ___ 53. Grape & Cable master IC bowl - white - nice
- ___ 54. Grape & Cable master IC bowl - blue - super pretty, scarce color

- ___ 55. Grape & Cable master IC bowl - green - hard to find a pretty example in this color and this one is
- ___ 56. Grape & Cable master IC bowl - purple - let's just say, fantastic!
- ___ 57. Grape & Cable master IC bowl - marigold - super nice



Details Above Right

- ___ 58. M'burg Mitered Ovals vase - marigold - the rarest color, beautiful
- ___ 59. M'burg Mitered Ovals vase - green - fantastic with beautiful irid.
- ___ 60. M'burg Mitered Ovals vase - purple - extremely rare, nice
- ___ 61. N's Peacock at Urn 11" ruffled bowl - marigold - dark & fantastic, made from the big IC bowl



- ___ 62. N's Dandelion tankard water pitcher - ice green - only one known! This 13,000 ribbed interior pitcher has a provenance of wonderful owners

- ___ 63. N's Dandelion tankard water pitcher - horehound - extremely rare in this color, covered with irid.

- ___ 64. N's Dandelion tankard water pitcher & 1 tumbler - purple - scarce, nice

- 1,150 ___ 65. Orange Tree ruffled bowl - marigold on moonstone - a very pretty example of this rare bowl

- 11,500 ___ 66. Persian Garden chop plate - purple - absolutely stunning! many may call this lavender, WOW!

- ___ 67. Stippled Strawberry 9" plate w/ ribbed back - marigold - dark & beautiful

- ___ 68. Rose Tree IC shaped bowl - blue - spectacular, this is the famous one from the Snell collection



- ___ 91. Acorn Burrs punch bowl & base w/1 cup - white - scarce, nice
- ___ 92. Acorn Burrs 7 pc. punch set - green - beautiful
- ___ 93. Acorn Burrs punch bowl & base w/1 cup - purple - scarce

___ 94. Acorn Burrs 8 pc. punch set - marigold - super nice set

___ **95. Superb Drape vase - aqua opal - just a handful known in any color, Wow! From the Tarkington collection**



- ___ 96. Daisy & Drape flared out vase - blue - very pretty, tiny pinpoint on side of one handle
- ___ 97. Daisy & Drape flared out vase - aqua opal - nice
- ___ 98. Daisy & Drape turned in vase - marigold



6,250 ___ 99. Orange Tree w/trunk 9" plate - ice green - extremely rare plate in this color plus has super pretty irid.!

1,960 ___ 100. Orange Tree w/trunk 9" plate - yellow - highly desirable in this very rare color, nice



___ 101. Orange Tree w/trunk 9" plate - blue - pretty

___ **102. M'burg Unlettered Courthouse ruffled bowl - amethyst - very rare bowl, pretty, another great M'burg piece**

___ 103. Springtime 4 pc. table set - marigold - scarce, very nice

___ **104. Grape & Cable tankard water pitcher - ice green - another extreme rarity, very few known and this is a super example**

___ 105. Grape & Cable tankard water pitcher - green - another extremely rare item, very few around, nice



- ___ 106. Windflower hdd nappy - ice green - scarce color
- ___ 107. Butterfly & Tulip square shaped bowl - purple - a Carnival Glass Classic!
- ___ 108. M'burg Sunflower pin tray - marigold - hardest color to find
- ___ 109. M'burg Sunflower pin tray - green - tiny spot of epoxy on edge



___ 110. M'burg Sunflower pin tray - purple - very nice

___ **111. Fenton Peacock Garden vase - marigold - this is an old one and a fantastic one! rare, rare, rare**

___ 112. Wishbone chop plate - purple - rare & nice

___ 113. Wishbone chop plate - marigold - super pretty irid., tiny nick on one point



18,500 ___ 114. M'burg Rosalind tall jelly compote - green - fantastic example, these are neat pieces, very seldom sold

___ **115. M'burg Rosalind tall jelly compote - amethyst - another great example, rare, rare**

___ **116. M'burg Rosalind tall jelly compote - marigold - probably the rarest color, 2 or 3 known, Wow - all three!**

___ 117. 1911 Birmingham Age Herald 9" plate - amethyst - a beautiful, hard to find piece

___ **118. N's Peacock at the Fountain ruffled fruit bowl - aqua opal - fantastic! very few known, great rare piece!**



___ 119. M'burg Peacock at Urn 7" shot gun bowl - marigold - satin, very rare, nice

__ 120. Heavy Iris tankard water pitcher & 1 tumbler - purple - stunning example!

__ 121. Heavy Iris tankard water pitcher & 1 tumbler - marigold - this is just stunning for a more available pitcher

__ 122. Stippled Three Fruits 9" plate w/ribbed back - aqua opal - scarce, nice

__ 123. Stippled Three Fruits 9" plate w/ribbed back - blue - scarce, nice

__ 124. Stippled Three Fruits 9" plate w/ribbed back - purple - nice



__ 125. Waterlily ftd chop plate - marigold - as far as I know, the only one known, super irid., another rarity!

__ 126. Windmill dresser tray - purple - super



10,500 __ 127. M'burg Trout & Fly 9" plate - lavender - extremely rare shape & color, not many known, a rare opportunity

__ 128. Milady tankard water pitcher & 1 tumbler - blue - the pitcher is absolutely beautiful

__ 129. Stippled Grape & Cable humididor - blue - quite rare, pretty



__ 130. Grape & Cable fernery - lime green - extremely rare item in this color, few known, super nice



__ 131. Twigs crimped edge 3 3/4" vase - purple - scarce, nice

__ 132. NUART Chrysanthemum chop plate - amber - super pretty plate

__ 133. Chrysanthemum chop plate - purple - rare, nice

__ 134. Imperial Grape water pitcher - aqua - fabulous irid. on this pitcher, almost looks like emerald green

__ 135. Imperial Grape water pitcher - purple - super

__ 136. Dragon's tongue IC shaped ftd bowl - marigold - this is beautiful, quite rare in the IC shape



__ 137. Tree Trunk Elephant's foot 12" vase - purple - very pretty, very rare

__ 138. M'burg Hanging Cherries powder jar - green - extremely rare item, highly collectible & nice



__ 139. Eat Paradise Sodas advertising 6" plate - amethyst - nice

__ 140. Oriental Poppy tankard water pitcher - sapphire - extremely rare color for this pattern, super pretty



__ 141. Oriental Poppy tankard water pitcher - ice green - another beautiful tankard, very rare color!

__ 142. Oriental Poppy tankard water pitcher - green - nice

__ 143. Oriental Poppy tankard water pitcher - purple - pretty



__ 144. Persian Garden fruit bowl & base - purple - bowl is pretty

__ 145. Thistle 9" plate - amethyst - super pretty plate, hard to find

__ 146. Thistle 9" plate - green - another super pretty plate

__ 147. Thistle 9" plate - marigold - the hardest color to find, pretty

__ 148. N's Dandelion Knights Templar mug - ice green - pretty irid. on this color

__ 149. N's Dandelion mug - aqua opal - nice

__ 150. M'burg Hanging Cherries chop plate - marigold - extremely rare plate, nice

__ 151. Heart & Vine 9" plate - blue - pretty



__ 152. Poinsettia & Lattice ftd ruffled bowl - aqua opal - a very rare aqua opal piece, has nice opal

__ 153. Poinsettia & Lattice ftd ruffled bowl - ice blue - pretty irid., scarce

__ 154. Poinsettia & Lattice ftd ruffled bowl - blue - electric highlights

__ 155. Poinsettia & Lattice ftd ruffled bowl - marigold - pumpkin dark! fabulous

__ 156. Fruit Salad punch bowl & base - blue opal - only one known, very small chip out of collar base of bowl, a fantastic Westmoreland, WOW!



__ 157. Fruit Salad punch bowl & base - purple - very scarce, chips on base of bowl

__ 158. Hearts & Flowers ruffled bowl w/ribbed back - aqua opal - very pretty, scarce



__ 159. Hearts & Flowers ruffled bowl w/ribbed back - purple - scarce, nice

__ 160. Hearts & Flowers ruffled bowl w/ribbed back - ice blue

__ 161. Rustic 18" funeral vase w/plunger base - blue - back of vase is 4 1/2" higher than front, amazing irid., this is a GREAT vase!

__ 162. Norris N Smith advertising ruffled bowl - amethyst - scarce, nice

__ 163. M'burg Seaweed 9" plate - green - satin & wonderful, another great Millersburg piece

__ 164. Blueberry water pitcher - blue - rare & nice



13,000 __ 165. Peacocks 9" plate w/ribbed back - emerald green - this is the definition of Emerald Green, an amazing Northwood plate, from the Maxwell Collection

__ 166. Peacocks 9" plate w/ribbed back - lime green - scarce color, pretty

__ 167. Peacocks 9" plate w/ribbed back - blue

__ 168. Loganberry vase - purple - a collector's favorite, beautiful

__ 169. M'burg Peacock IC shaped sauce - blue - satin, rare & nice

__ 170. Holly 9" plate - aqua opal - extremely rare plate, 1 or 2 known, very pretty, minor nick on base



__ 171. Holly 9" plate - ice green - another very rare plate, pretty irid.,

__ 172. Grape & Cable perfume - purple - pretty example, tiniest pit on top edge of bottle



__ 173. Grape & Cable perfume - marigold - nice

__ 174. M'burg Peacock at Urn chop plate - marigold - radium & beautiful, extremely rare plate

__ 175. Butterfly & Berry hatpin holder - blue - scarce

__ 176. Butterfly & Berry hatpin holder - marigold - scarce, nice

11,600 __ 177. Poppy Show ruffled bowl - aqua opal - pastel & super, extremely rare bowl, WOW!



__ 178. Poppy Show ruffled bowl - ice green - hard color to find, nice

__ 179. Poppy Show ruffled bowl - white - pretty

__ 180. Poppy Show ruffled bowl - purple - pretty

__ 181. Poppy Show ruffled bowl - marigold - nice

__ 182. Imperial Grape chop plate - smoke - rare color, has wonderful stretchy irid.

__ 183. Grape & Cable 14 pc. master punch set - purple - scarce, nice



__ 184. Grape & Cable 10 pc. master punch set - marigold - pretty set

__ 185. Leaf Chain 9" plate - yellow - very rare color, nice

__ 186. Leaf Chain 9" plate - blue - fantastic



__ 187. Double Dutch ftd round bowl - purple - typical Imperial beauty

__ 188. M'burg Deep Grape square shaped compote - amethyst - very rare compote, highly desirable, nice

__ 189. Brooklyn Bridge 10 ruffled bowl - marigold - pretty

__ 190. Rose Show Variant 9" plate - blue - absolutely super, a screamer!

__ 191. Rose Show Variant 9" plate - marigold - tons of pink irid., beautiful

__ 192. Windmill ruffled sauce - purple - pretty

__ 193. Inverted Thistle water pitcher - amethyst - rare piece & super piece, a Cambridge WOW!

__ 194. Stippled Strawberry ruffled bowl w/ribbed back - marigold - pretty



__ 195. Kittens miniature cuspidor - marigold - extremely rare whimsy, an outstanding miniature

__ 196. Kittens cereal bowl - aqua - rare color for Kittens

__ 197. Kittens square shaped toothpick - blue - unusual shape

__ 198. Kittens ruffled dish - blue - pretty

__ 199. Kittens 2 sides up dish - marigold - as pretty as these get

__ 200. M'burg Hobstar & Feather giant rose bowl - amethyst - radium type irid., rare & beautiful

__ 201. M'burg Hobstar & Feather giant rose bowl - green - satin example, also very rare

__ 202. Inverted Strawberry spittoon - marigold - nice





__ 203. Rose Show 9" plate - marigold on custard - not only is this a rare plate, the irid. on this is beautiful

__ 204. Rose Show 9" plate - lime green opal - another beautifully iridized plate, rare

__ 205. Rose Show 9" plate - lime green - very rare color, nice

__ 206. Rose Show 9" plate - ice green - pretty & scarce

__ 207. Rose Show 9" plate - blue - electric, nice

__ 208. Rose Show 9" plate - purple - scarce, nice

__ 209. Many Fruits ruffled punch bowl & base - white - super pretty, scarce chip on top edge of bowl

__ 210. Many Fruits round punch bowl & base - marigold - very nice

__ 211. Dragon & Lotus 9" plate - blue - very hard to find plate

__ 212. Banded Grape & Cable banana boat - blue - scarce, very pretty



__ 213. M'burg Courthouse 3 in 1 edge bowl - lavender - super nice, rare shape, rare color

__ 214. Waterlily ftd ruffled sauce - lime green opal - scarce

__ 215. Embroidered Mums ruffled bowl w/ribbed back - aqua opal - pastel, nice, rare

__ 216. Embroidered Mums ruffled bowl w/ribbed back - ice blue - nice

__ 217. Embroidered Mums ruffled bowl w/ribbed back - blue - pretty

__ 217a. Embroidered Mums ruffled bowl w/ribbed back - marigold - lots of yellow, stunning!



__ 218. Grapevine Lattice tankard pitcher & 1 tumbler - purple - absolutely beautiful, rare color, great opportunity

__ 219. M'burg Courthouse IC shaped bowl - amethyst - radium, nice

__ 220. Cherry Chain chop plate - marigold - very pretty, scarce

__ 221. Rose Show Variant ruffled bowl - renninger blue - scarce, nice

__ 222. M'burg Hanging Cherries 7" plate - amethyst - satin & super, rare

__ 223. M'burg Hanging Cherries 7" plate - marigold - satin, very nice & rare

__ 224. Wide Panel epergne - white - rare, pretty

__ 225. Wide Panel epergne - green - scarce, pretty, minor nick on rib of base

__ 226. Wide Panel epergne - marigold - another nice one

__ 227. Autumn Acorn 9" plate - green - hard to find, nice



__ 228. Stippled Grape & Cable bonbon - peach opal - extremely rare bonbon, only a few known, beautiful!

__ 229. Stippled Grape & Cable bonbon - aqua - rare color & beautiful, not many of these around!

__ 230. Stippled Grape & Cable bonbon - aqua opal - another rarity, nice



__ 231. M'burg Peacock at Urn
10" 3 in 1 edge bowl - amethyst
- radium, nice

__ 232. Ten Mums tankard
water pitcher & 1 tumbler
- white - very rare pitcher
& super nice, a great
opportunity

__ 233. Ten Mums tankard
water pitcher & 1 tumbler -
blue - a dandy! super pretty!

__ 234. Ten Mums tankard water pitcher & 1 tumbler

- marigold - dark &
beautiful, what a trio!

__ 235. Tree Trunk
10" vase - aqua opal -
butterscotch, beautiful

__ 236. Broken
Arches punch bowl &
base - purple - super

__ 237. 1914
Parkersburg Elks 7"
plate - blue - very
pretty, very scarce



__ 238. Rose Show ruffled
bowl - ice blue - scarce, nice

__ 239. Rose Show ruffled
bowl - aqua opal

__ 240. M'burg Peacock
at Urn giant compote -
amethyst - satin & beautiful,
bird & urn are wonderful



__ 241. Peter
Rabbit 9"
plate - blue
- very pretty
example, rare

__ 242. Grape
& Cable small
size ruffled
fruit bowl - ice
green - pretty
scarce

__ 243. Grape
& Cable small
size ruffled fruit bowl - ice blue - beautiful



__ 244. Imperial Grape 6"
plate - blue - very rare color
for Imperial, nice

__ 245. Strawberry Scroll 3 pc.
water set - marigold - hard to
find, very nice



__ 246. Nippon 9" plate w/ribbed back - ice green -
as far as I know, this is the only one known,
beautiful irid.

__ 247. Nippon 9" plate w/BW back - green -
beautiful & rare



__ 248. M'burg Hobstar &
Feather 11 pc. punch set -
marigold - rare set, nice

__ 249. Leaf Chain IC
shaped bowl - yellow
- very rare color, very
beautiful irid., great
piece!

__ 250. Stippled Grape &
Cable Variant PCE bowl w/
ribbed back - aqua opal - a
beauty, rare

__ 251. Stippled Grape &
Cable Variant PCE bowl w/
ribbed back - blue - nice

__ 252. Diamond Lace 7 pc. water set - purple - pretty



__ 253. Lotus &
Grape 9" plate - green
- rare & beautiful

__ 254. Lotus &
Grape 9" plate - blue
- another hard to find
plate, nice

__ 255. Springtime 3
pc. water set - green -
nice



__ 256. Springtime water pitcher - marigold - pretty,
scarce

__ 257. M'burg Hanging Cherries lg size IC shaped bowl - aqua - rare color, satin

__ 258. Peacock & Grape ruffled bowl - red - scarce



__ 259. Stippled Three Fruits ruffled bowl w/ ribbed back - aqua opal - butterscotch, super pretty

__ 260. Christmas compote - purple - a carnival classic, very pretty & rare

__ 271. Inverted Strawberry tankard water pitcher - amethyst - rare & nice



__ 272. Orange Tree IC shaped bowl - marigold on moonstone - rare, very nice

__ 273. N's Grape & Cable lg size ruffled orange bowl - purple - nice

__ 274. M'burg Trout & Fly 3 in 1 edge bowl - green - satin

__ 274a. Wreath of Roses punch bowl & base - purple - has Persian Medallion interior, outside of bowl is fantastic

__ 275. Peacocks ruffled bowl w/ribbed back - aqua opal - pretty

__ 276. Peacocks ruffled bowl w/ribbed back - green - nice



__ 277. Hattie chop plate - amber - rare plate w/beautiful irid.



__ 278. Blackberry Open Edge 6 1/2" whimsey vase - blue - neat piece, highly collectible

__ 279. Peacock at the Fountain ruffled compote - blue - nice

__ 280. M'burg Rosalind 9" plate - green - satin, rare as not many known

__ 281. Blackberry Block tankard water pitcher & one tumbler - blue - pretty

__ 282. Stippled Good Luck 9" plate w/ribbed back - marigold - very pretty

__ 283. Jockey Club advertising ruffled bowl - amethyst - very pretty irid.

__ 284. Acorn 7" ruffled bowl - amber opal - rare color, this next run was some of Don's favorites, he loved the Acorn pattern



__ 261.

Christmas compote - marigold - dark, super, rare color



__ 262. Acorn IC round bowl - marigold on moonstone - scarce

__ 263. Grape & Cable 11" ruffled bowl - blue - super pretty, from the Morgan collection

__ 264. Grape & Cable 11" ruffled bowl - white - nice

__ 265. Grape & Cable 11" ruffled bowl - marigold - dark, nice



__ 266. M'burg Peacock at Urn 3 in 1 edge Mystery bowl - blue - great piece, satin & super, rare color, WoW

__ 267. Rustic 17 1/2" funeral vase - white - scarce, nice

__ 268. Rustic 18" funeral vase - blue - very pretty

__ 269. Greek Key 9" plate w/ribbed back - blue - very rare color, electric highlights

__ 270. Greek Key 9" plate w/ribbed back - marigold - super beautiful w/ almost a radium irid.



- __ 285. Acorn 7" ruffled bowl - red - scarce color
- __ 286. Acorn 7" ruffled bowl - amber - nice
- __ 287. Acorn 7" ruffled bowl - aqua
- __ 288. Acorn 7" ruffled bowl - lime green
- __ 289. Acorn 7" ruffled bowl - blue - nice
- __ 290. Grape Arbor tankard water pitcher & 1 tumbler - ice blue - scarce, nice

__ **291. M'burg Big Fish IC shaped bowl - green - satin, pretty**

__ 292. M'burg Big Fish IC shaped bowl - amethyst - satin, nice



__ 293. Mikado ruffled compote - blue - nice

__ **294. Good Luck ruffled bowl w/ribbed back - aqua opal - pastel, pretty**

__ 295. Good Luck ruffled bowl w/ribbed back - aqua opal - butterscotch, pretty



__ 296. Stork & Rushes water pitcher - blue - pretty

__ **297. Captive Rose 9" plate - amethyst - absolute beauty**

__ 298. Captive Rose 9" plate - blue - pretty

__ 299. Grape & Cable bonbon - green - nice

__ 300. M'burg Hobnail Swirl spittoon - amethyst - very nice example



__ 301. Fenton's Peacock at Urn 9" plate - blue - very pretty

__ **302. Grape & Cable vase - purple - very few known in any color, it is beautiful, has a chip on the backside of one foot**



__ **303. Imperial Grape 9" plate - purple - super pretty**

__ 304. Starflower water pitcher - blue - very nice example of this scarce pitcher

__ **305. Leaf & Beads rose bowl - lime green opal - maybe the rarest color, a dandy**

__ 306. M'burg Seaweed 10" IC shaped bowl - marigold - satin, nice, very rare

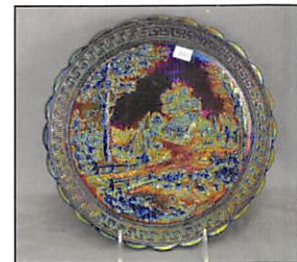


__ **307. Illinois Soldiers & Sailors Home 7" plate - blue - super pretty**

__ 308. Illinois Soldiers & Sailors Home 7" plate - marigold - another beauty

__ 309. Tree Trunk 13" midsize vase - ice green - rare color, nice

__ **310. NUART Homestead chop plate - purple - fantastic example**



__ **311. Leaf Chain ruffled bowl - ice green - very pretty irid. on this rare colored piece**

__ 312. Acorn Burrs water pitcher - purple - collector's favorite

__ 313. Acorn Burrs water pitcher & 1 tumbler - marigold - nice

__ 314. M'burg Hobnail Swirl 9 1/2" vase - marigold - scarce

__ **315. Compliments of Pacific Coast Mail Order House / Fenton Grape & Cable fruit bowl - blue - just a few known, super pretty & a highly desired lettered piece**



__ 316. Diamond Point 10 1/2" vase - aqua opal - nice

__ **317. Shell & Sand 9" plate - purple - pretty, rare**

__ 318. Shell & Sand 9" plate - marigold - pretty, scarce

__ 319. 1911 Birmingham Age Herald ruffled bowl - amethyst - super nice irid., scarce

__ 320. Grape & Cable Variant 9" plate w/BW back - green - very pretty



__ 321. M'burg Hanging Cherries 3 in 1 edge sauce - blue - very scarce color & very nice

__ 322. Dragon & Strawberry ftd ruffled bowl - green - a beautiful and quite scarce example

__ 323. Peach 4 pc. water set - blue - very nice

__ 324. Covered Frog - lavender - rare color, nice irid., these are great novelty pieces!

__ 325. Covered Frog - ice green - another good one

__ 326. Covered Frog - marigold - nice

__ 327. Covered Frog - green - non iridized



__ 328. Little Daisies IC shaped bowl - blue - very rare pattern & nice



__ 329. Hearts & Flowers 9" plate w/ribbed back - lime green - rare color, nice



__ 332. Peacock at the Fountain round shaped punch bowl & base - white - super pretty irid., rare shape



³²⁵ __ 333. Peacock at the Fountain punch bowl & base - marigold - pretty

__ 334. Blackberry Open Edge 7" plate - blue - hard to find, nice



__ 335. Embroidered Mums 9" plate w/ribbed back - ice green - scarce, very nice



__ 336. M'burg Multi Fruits & Flowers sherbet - green - radium, nice, these are very hard to find

__ 337. Leaf Tiers 4 pc. water set - marigold - scarce, nice

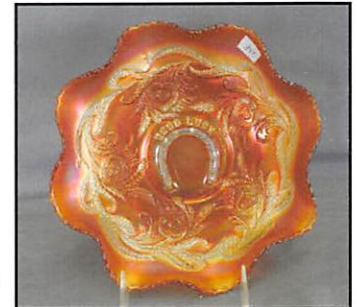
^{1,050} __ 338. N's Peacock at Urn chop plate - purple - very pretty, scarce

__ 339. Concord 3 in 1 edge bowl - green - beautiful

__ 340. Stippled Grape & Cable 10" ruffled bowl - blue - has electric highlights



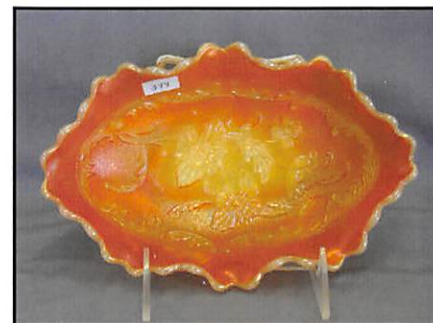
__ 341. M'burg Deep Grape round compote - green - very rare, a Millersburg favorite



__ 342. Fenton's Good Luck / Heart & Horseshoe ruffled bowl - marigold - rare, nice

__ 343. Fluffy Peacock water pitcher & 1 tumbler - green - pretty

__ 344. Poppy pickle dish - marigold on custard - super, super pretty, from the Morgan collection



__ 345. Poppy pickle dish - aqua opal - another beautiful pickle dish

__ 346. Orange Tree 8 pc. round punch set - blue

2022 Carnival Glass Auction

July 16, 2022

Holiday Inn Airport West
Earth City, Missouri

Seeck Auctions

Jim & Jan Seeck
641-424-1116



___ 355. Tree Trunk 15 1/2" funeral vase - purple - this vase is beautiful! still selling great pieces at the end of the auction!!



___ 356. Peter Rabbit IC shaped bowl - blue - incredible, one of the nicest we've seen



___ 357. Farmyard 6 ruffled bowl - purple - super pretty irid., a dandy for the last piece in the sale!



___ 347. N's Stippled Peacock at Urn master IC bowl - sapphire - super rare bowl in a super rare color, WoW!



3,400 ___ 348. N's Stippled Peacock at Urn master IC bowl - renninger blue - very rare color, not many known

___ 349. N's Stippled Peacock at Urn master IC bowl - blue - very rare, beautiful example



___ 350. Concord 9" plate - marigold - dark, super

___ 351. Concord 9" plate - green - scarce, nice

___ 352. Sailboats 6" plate - blue - very rare, nice

___ 353. M'burg Rose Columns vase - green - another classic Millersburg vase, super nice



___ 354. M'burg Rose Columns vase - marigold - another rare vase, beautiful, from Morgan Collection

Additional Lots

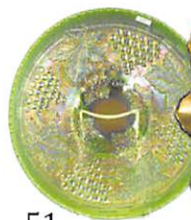
48



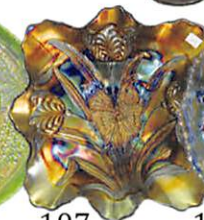
35



36



51



107



186



270



33



121



134



193



304