





- | | | | |
|----|--|-----|--|
| 1 | Celeste blue Novelty Swan | 51 | Nwood 13" marigold Thin Rib mid size vase Beautiful vase |
| 2 | Ice Green Novelty Swan | 52 | Mari Diamond Cut Shields Carnival Glass Tumbler |
| 3 | Velva Rose (pink) Novelty Swan | 53 | Elec Blue Strawberry Scroll tumbler |
| 4 | Red Carnival Novelty Swan- IG Contemporary | 54 | Dark Mari Orange Tree ft'd tumbler |
| 5 | Fenton 6" Waterlily Ft'd Sauce- red/ amberina w/ swirl | 55 | Dark Blue Grapevine Lattice tumbler |
| 6 | Fenton 6" Waterlily Ft'd Sauce- pale apple green | 56 | Ice Blue Grape Arbor tumbler |
| 7 | Fenton 6" Waterlily Ft'd Sauce- vaseline opal | 57 | Elec purple Dandelion tumbler w/ rib int. |
| 8 | Fenton 6" Little Fishes ft'd sauce- Sapphire | 58 | Pastel Mari Peacock at FOUNTAIN tumbler |
| 9 | Fenton 6" Waterlily ft'd sauce- Aqua | 59 | NW Killer elec purple Peacock at Fountain tumbler |
| 10 | Fenton 6" Waterlily ft'd sauce- green | 60 | Purple Greek Key tumbler |
| 11 | Fenton 6" Waterlily ft'd sauce- vaseline | 61 | Nwood purple Peacock at Fountain tumbler |
| 12 | Fenton 6" Waterlily ft'd sauce- sapphire | 62 | Green Tiger Lily tumbler |
| 13 | Fenton 6" Waterlily ft'd sauce- marigold | 63 | Purple Heavy Iris tumbler |
| 14 | Fenton 6" Waterlily ft'd sauce- sapphire w aqua feet | 64 | marigold Lustre Rose tumbler |
| 15 | Fenton 6" Waterlily ft'd sauce- cobalt blue | 65 | Green Greek Key tumbler |
| 16 | Fenton 6" Waterlily ft'd sauce- brick red | 66 | Purple Acorn Burr tumbler |
| 17 | Nwood emerald green Corn vase w/ stalk base | 67 | Blue Rambler Rose tumbler |
| 18 | Nwood ice green Corn vase w/ stalk base | 68 | Ice Blue Oriental Poppy tumbler |
| 19 | Nwood white Daisy & Drape vase w cupped top | 69 | SUPER Elec purple Oriental Poppy Tumbler |
| 20 | Nwood aqua opal Daisy & Drape vase, flared top Nice rich color | 70 | Bright purple Grape & Cable tumbler |
| 21 | Nwood ice green Peacock at Fountain compote | 71 | Blue Bouquet tumbler |
| 22 | Nwood ice blue Peacock at Fountain compote | 72 | Blue Orange Tree ft'd tumbler |
| 23 | Nwood marigold Peacock at Fountain compote | 73 | Nwood 10" blue Peacock at Urn stippled MIC bowl |
| 24 | Nwood elec blue Peacock at Fountain compote | 74 | Nwood 10" purple Peacock at Urn MIC bowl |
| 25 | Nwood elec purple Peacock at Fountain compote | 75 | Nwood 10" marigold Peacock at Urn stippled MIC bowl |
| 26 | Nwood elec purple Heart & Flower compote | 76 | Nwood 10" ice green Peacock at Urn MIC bowl |
| 27 | Nwood mari Heart & Flower compote | 77 | Nwood 10" ice blue Peacock at Urn MIC bowl |
| 28 | Nwood blue Heart & Flower compote | 78 | Mburg 10" purple Peacock at Urn MIC bowl, Bee no beads |
| 29 | Nwood elec purple Heart & Flower compote | 79 | Nwood 8" ice green Poppy Show bowl |
| 30 | Nwood BRIGHT green Heart & Flower compote | 80 | Nwood 8" purple Poppy Show bowl |
| 31 | Nwood marigold Heart & Flower compote | 81 | Nwood 9" emerald green Poppy Show plate. WOW!!!! |
| 32 | Nwood white Heart & Flower compote | 82 | Nwood 9" ice blue Poppy Show plate. |
| 33 | Nwood lime green Heart & Flower compote | 83 | Nwood 9" elec blue Poppy Show plate. SUPER! |
| 34 | Nwood pastel AO Heart & Flower compote | 84 | Nwood 9" mari Poppy Show plate. |
| 35 | Nwood ice blue Heart & Flower compote | 85 | Nwood ice blue Raspberry milk pitcher- Scarce |
| 36 | Nwood ice green Heart & Flower compote | 86 | Nwood elec purple Raspberry milk pitcher |
| 37 | Nwood 7" green Tree Trunk squatty vase | 87 | Nwood green Raspberry milk pitcher |
| 38 | Nwood 7.5 " purple Tree Trunk squatty vase | 88 | Imperial smoke Zipper Loop oil lamp (4.75" base) |
| 39 | Nwood 10.5" Sapphire Tree Trunk vase | 89 | Imperial mari Zipper Loop oil lamp (5.25" base) |
| 40 | Nwood 11" ice blue Tree Trunk vase | 90 | Nwood 8.5" blue Poinsettia & Lattice ft'd bowl |
| 41 | Nwood 10" elec blue Tree Trunk vase WOW! | 91 | Nwood 8.5" ice blue Poinsettia & Lattice ft'd bowl |
| 42 | Nwood 13" purple Tree Trunk mid size vase | 92 | Nwood 8.5" marigold Poinsettia & Lattice ft'd bowl |
| 43 | Nwood 13" marigold Tree Trunk mid size vase w/plunger base | 93 | Nwood 8.5" purple Poinsettia & Lattice ft'd bowl |
| 44 | Nwood 10" bright green Thin Rib vase | 94 | Mburg 7" green Blackberry Wreath ICS bowl |
| 45 | Nwood 11.5 lt amy Thin Rib vase - kinda lavender | 95 | Mburg 7.5" green Little Stars bowl |
| 46 | Nwood 10" sapphire Thin Rib vase | 96 | Mburg 7.5" purple Little Stars bowl |
| 47 | Nwood 14" sapphire Thin Rib mid size vase IMPRESSIVE! | 97 | Mburg 7.5" mar Trout & Fly square bowl |
| 48 | Nwood 12" bright purple Thin Rib mid size vase | 98 | Mburg 6" purple Peacock at Urn ICS bowl |
| 49 | Nwood 12" emerald green Thin Rib mid size vase | 99 | Mburg mari Hobnail Swirl rosebowl |
| 50 | Nwood 12" elec purple Thin Rib mid size vase | 100 | Mburg radium green Leaf Little Flowers compote |
| | | 101 | Mburg green Seacoast pin tray |

- 102 Mburg green Sunflower pin tray
- 103 Mburg purple Sunflower pin tray Nice one!
- 104 Cambridge green Inverted Strawberry powder jar
- 105 Cambridge marigold Inverted Strawberry powder jar Couple MINUTE pin points on lid rim
- 106 Cambridge green Inverted Strawberry spittoon
- 107 Cambridge purple Inverted Thistle spooner
- 108 Cambridge purple Inverted Thistle creamer
- 109 Fenton Celeste Blue Pond Lily 7" card tray. A top Fenton rarity, Only 1 other reported and it is square. This is a BEAUTIFUL piece of glass! BUY IT!
- 110 Fenton 7" white Pond Lily card tray
- 111 Fenton 7" purple Pond Lily card tray
- 112 Fenton 7" marigold Pond Lily card tray
- 113 Fenton 6" green Pond Lily square bon bon
- 114 Fenton 6" blue Pond Lily square bon bon
- 115 Dugan 10" BRIGHT purple 6 ruffled Farmyard bowl. Has nice electric hilights all thru the bowl w. bright yellows. Good lookin bowl.
- 116 Dugan 13" purple Persian Garden chop plate. Very Scarce and Very pretty!
- 117 Dugan purple Amarylis stemmed plate
- 118 Dugan 6" purple Persian Garden plate, NICE!
- 119 Dugan 6" PO 4 Flowers plate
- 120 Dugan white Leaf Rays nappy
- 121 Dugan 6.5" PO Bells & Beads tri-corner plate w/CRE
- 122 Dugan elec purple Strawberry single lily epergne. Have not sold one of these in a longggggg time. No flaking
- 123 Dugan smokey Lav. Grape Delight ft'd rosebowl, toes OK
- 124 Dugan 9" PO Rain Drops 3-1 edge dome ft'd bowl.
- 125 Dugan 9.5" PO Garden Path vari deep ruffled bowl
- 126 Dugan 9" elec purple Flower & Frames dome ft'd bowl- BRIGHT!
- 127 Dugan 9" blue Fanciful plate- Scarce
- 128 Dugan 9" blue Round Up plate- Scarce
- 129 Dugan 9" PO Round Up plate
- 130 Dugan 8.5" purple Round Up low ruffled plate/ bowl
- 131 Fenton 8.5" blue Peacock and Grape 8 ruffled bowl
- 132 Fenton 8.5" green Peacock and Grape 8 ruffled bowl
- 133 Fenton 8.5" red /amberina Peacock and Grape ICS bowl
- 134 Fenton 8.5" blue Orange Tree ICS bowl
- 135 Fenton 8.5" mari Coral 8 ruffled bowl
- 136 Fenton 8.5" green Heart & Vine bowl
- 137 Fenton 9" RED RED Vintage 8 ruffled bowl. Great color- Looks RED
- 138 Fenton 9" DEEP RED Dragon & Lotus 8 ruffled bowl. There is ZERO doubt this is red from 3 blocks away!
- 139 Fenton 9" red Holly 8 ruffled bowl. Another GREAT of RED
- 140 Fenton 9" red Holly 8 ruffled bowl. Another GREAT of RED - YES 2!!
- 141 Fenton 9" dark forest green Dragon & Lotus 8 ruffled bowl. WHAT A LOOKER!!
- 142 Fenton 9" blue Cherry Circles bon bon
- 143 Fenton 6.75" blue Elks Atlantic City ICS bowl AWESOME DETAIL
- 144 Fenton 9" mari Stag & Holly ft'd plate- Scarce
- 145 Fenton 9" mari Peacock at Urn plate
- 146 Fenton 9" mari Holly plate
- 147 Fenton 9" blue Orange Tree plate w TT center
- 148 Fenton 9" green Lotus & Grape plate. Has REAL NICE color! Rich green base glass
- 149 Fenton mari Kittens square bowl
- 150 Fenton mari Kittens card tray plate
- 150a Fenton 8.5" AQUA OPAL Orange Tree 6-ruffle bowl with Tree Trunk center. Loaded with opal. The opal has an aqua hue to it. Very attractive bowl. Only one reported!
- 150b Fenton 8.5" emerald green Peacock at Urn 8- ruffle bowl. Super!
- 150c Fenton 9.5" blue Birds & Cherries flattened ice cream shape bowl. Not sure we have seen one of these before.
- 150d Fenton bright blue Orange Tree hat pin holder. Good rich iridescence!
- 150e Dugan 10.5" purple Wishbone & Spades chop plate with electric highlights throughout. Pretty Plate!
- 151 Fenton 6" purple Vintage tri corner plate
- 152 Fenton RED Holly goblet compote
- 153 Fenton blue Orange Tree powder jar
- 154 Fenton GREEN Orange Tree Hatpin holder
- 155 Fenton marigold Orange Tree hatpin holder
- 156 Fenton BRIGHT MARI Persian Medallion hair receiver
- 157 Fenton 6" mari Persian Medallion plate
- 158 Fenton 7" blue Persian Medallion square bon bon
- 159 Fenton 7" green Persian Medallion square bon bon
- 160 Fenton 6.5" reverse amberina Panther ft'd sauce. Red base- yellow body- dark red edge. RARE
- 161 Fenton 6" mari Panther ft'd bowl
- 162 Fenton 6" dark green Sailboats ruffled bowl- SCARCE
- 163 Fenton 5.5" dark green Sailboats round sauce- RARE
- 164 Fenton 9" mari Peacock at Urn 8 ruffled bowl
- 165 Nwood 9" BLASTING ELEC BLUE G&C stippled PCE bowl.. OMG!!
- 166 Nwood 9" sapphire G&C stippled bowl, great pastel color
- 167 Nwood 9" blue G&C stippled plate
- 168 Nwood 9" emerald green G&C stipple plate , Old Rose Adv.
- 169 Nwood 9" sapphire G&C stipple plate , RARE & VERY PRETTY!
- 170 Nwood 9" green G&C stippled plate, Old Rose Adv. Nice coloration
- 171 Nwood 9" mari Good Luck stippled PCE bowl
- 172 Nwood 9" ren blue Good Luck stippled PCE bowl Scarce
- 173 Nwood 9" marigold Good Luck PCE bowl
- 174 Nwood 9" elec blue Good Luck stippled PCE bowl
- 175 Nwood 9" purple Good Luck plate
- 176 Nwood 8.5" bright purple Strawberry Stippled ruffled bowl. NICE!
- 177 Nwood 9" Ren. blue 3 Fruits stippled ft'd bow

- 178 Nwood 9" elec purple 3 Fruits ft'd bowl- SUPER!
- 179 Nwood 9" elec blue Embroidered Mums ruffled bowl. YES!!
- 180 Nwood Elec. blue Peacock at Fountain spooner
- 181 Nwood elec purple Peacock at Fountain spooner
- 182 Nwood marigold Peacock at Fountain spooner
- 183 Nwood green Peacock at Fountain spooner RARE
- 184 Nwood purple Springtime spooner
- 185 Nwood G&C purple spooner
- 186 Nwood purple Acorn Burr Spooner
- 187 Nwood elec. blue Peacocks PCE bowl
- 188 Nwood 9" lt. amy. Peacocks PCE bowl w/ electric highlights
- 189 Nwood 9" mari. Peacocks plate
- 190 Nwood 9" IG Peacocks plate
- 191 Nwood 9" elec. blue Peacocks plate
- 192 Nwood 9" purple Peacocks ruffled bowl with electric highlights
- 193 Nwood 9" Ren. blue Rose Show Vt. ruffled bowl
- 194 Nwood 9" green Wishbone footed bowl
- 195 Nwood 8.5" mari. Wishbone footed plate
- 196 Nwood 9.5" elec. purple Wishbone PCE bowl
- 197 Nwood 9" lime green Rose Show plate. Beautiful pastel colors
- 198 Nwood 9" mari. Rose Show plate. Dark color
- 199 Nwood 8.5" AO Rose Show bowl
- 200 Nwood 8.5" mari. Rose Show bowl
- 201 Nwood purple Blossomtime compote
- 202 Nwood bright mari. Blossomtime compote
- 203 Nwood green Blossomtime compote
- 204 West. 8.5" amber Corinth JIP vase
- 205 West. 8.5" BO Carolina Dogwood bowl
- 206 West. 8.5" MMG Daisy Wreath bowl
- 207 Imperial 10.5" white Homestead chop plate Nice color!
- 208 Imperial 10.5" elec. purple Chrysanthemum chop plate. Rare & Beautiful!
- 209 Imperial elec purple Scroll Embossed mini compote
- 210 Imperial smoke Rococco vase
- 211 Imp Grape marigold cup and saucer
- 212 Imp smoke Soda Gold 4" candleholders
- 213 Imp green Scroll Embossed Compote
- 214 Imp 9" smoke Hattie deep round bowl
- 215 Imp elec purple Pansy pickle dish
- 216 Imp 5.5" elec purple Scroll Embossed bowl in metal holder (Sugar cubes)
- 217 Imperial elec purple Scroll Embossed large compote w/ curved star exterior
- 218 Imp 9" elec purple Open Rose plate. A real looker!
- 219 Imperial 9" elec purple Pansy ruffled bowl WOW!
- 220 Nwood Singing BIRds mug - purple
- 221 Nwood Singing BIRds mug - green
- 222 Nwood Singing BIRds mug - stippled marigold
- 223 Nwood Singing BIRds mug - elec blue
- 224 Nwood Singing BIRds mug - stippled marigold
- 225 Nwood 6" elec blue Peacock at Urn ICS sauce
- 226 Dugan 6.5" PO Wide Rib pinched vase
- 227 Dugan 8" PO Hyacinth top vase.
- 228 Fenton blue Orange Tree Breakfast cream sugar set
- 229 Fenton mari Butterfly & Berry spooner
- 230 Fenton green Butterfly & Berry spooner
- 231 West. lime green Daisy Squares compote w/ banana boat shape top and crimped edge
- 232 West. marigold Daisy Squares compote w/ banana boat shape top and crimped edge
- 233 West green Louisia ft'd rosebowl
- 234 West. green Strutting Peacock creamer w/ lid
- 235 Nwood Celeste 8.5" blue Florentine candlesticks (six nine five)
- 236 Imperial 8" marigold Chesterfield candlesticks
- 237 Marigold Tree Bark 3 pc console set
- 238 Nwood purple G&C humidor- couple nips on rim of jar.
- 239 Nwood purple Wide Panel 4 lily epergne Haven't seen one of these in awhile. Lily bases and inset seem to be in good condition
- 240 Nwood 9" elec. purple Three Fruits PCE bowl with plain back
- 241 Nwood 8.5" mari. stippled Three Fruits PCE bowl. lacks color.
- 242 Nwood 9" bright mari. Stippled Three Fruits plate. Nice rich color.
- 243 Nwood 8" purple Stippled Three Fruits plate
- 244 Nwood 9" purple Stippled Three Fruits plate with elec. highlights
- 245 Nwood 9" sapphire Stippled Three Fruits plate Rare!
- 246 Nwood 9" pastel AO Stippled Three Fruits plate. Outstanding color!
- 247 Fenton Horse Medallion rosebowl-blue
- 248 Fenton Horse Medallion rosebowl-marigold
- 249 Fenton Horse Medallion rosebowl-powder blue
- 250 Fenton Horse Medallion rosebowl-vaseline Outstanding color!
- 251 Fenton Horse Medallion ft'd JIP bowl-vaseline Nice color!
- 252 Fenton Horse Medallion ft'd JIP bowl-forest green
- 253 Fenton Horse Medallion ft'd JIP bowl-blue
- 254 Fenton Horse Medallion ft'd JIP bowl-marigold
- 255 Fenton Horse Medallion ft'd JIP bowl- green
- 256 Fenton 8" green Horse Medallion ft'd round bowl
- 257 Fenton 8" purple Horse Medallion ft'd 8-ruffle
- 258 Fenton 7.5" powder blue Horse Medallion plate. Very Rare
- 259 Fenton 7.5" blue Horse Medallion plate
- 260 Fenton 7.5" mari. Horse Medallion plate
- 261 Fenton 6.5" vaseline Horse Medallion ft'd nut bowl
- 262 Fenton 6.5" amber Horse Medallion ft'd nut bowl
- 263 Fenton 6.5" blue Horse Medallion ft'd nut bowl
- 264 Fenton 6.5" RED SLAG Horse Medallion ft'd nut bowl
- 265 Fenton 6.5" lavender Horse Medallion ft'd nut bowl
- 266 Nwood elec. blue round Bushel Basket
- 267 Nwood mari. Fine Cut & Roses rosebowl. Large chip on one foot
- 268 Nwood purple Fine Cut & Roses rosebowl
- 269 Nwood green Fine Cut & Roses rosebowl

- 270 Nwood IB Drapery rosebowl
- 271 Nwood AO Drapery rosebowl
- 272 Nwood mari. Beaded Cable rosebowl
- 273 Nwood purple Beaded Cable rosebowl
- 274 Nwood blue Beaded Cable rosebowl
- 275 Nwood AO Leaf & Beads rosebowl
- 276 Nwood blue Leaf & Beads rosebowl
- 277 Nwood bright mari. Leaf & Beads rosebowl with Sunflower interior
- 278 Nwood purple Leaf & Beads rosebowl with Sunflower interior
- 279 Nwood mari. Wishbone single lily epergne. Lily base and inset in good condition
- 280 Nwood green Wishbone single lily epergne. Lily base and inset in good condition
- 281 Nwood purple Wishbone single lily epergne. Lily base and inset in good condition
- 282 Nwood IG Wishbone single lily epergne. Lily base has a couple small flakes. Inset is ok. Wobbles a little on the table
- 283 Nwood 9" IB Grape Leaves ruffled bowl
- 284 Nwood green Oriental Poppy tankard
- 285 Nwood mari. Oriental Poppy tankard with Rib interior
- 286 Fenton Orange Tree Loving Cup w/ Peacock Tail interior-odd ice blue
- 287 Fenton Orange Tree Loving Cup w/ Peacock Tail interior-green
- 288 Fenton Orange Tree Loving Cup w/ Peacock Tail interior-blue
- 289 Fenton Orange Tree Loving Cup w/ Peacock Tail interior-purple
- 290 Fenton Orange Tree Loving Cup w/ Peacock Tail interior-bright marigold
- 291 Imperial 11" light amy. Parlor Panels swung vase Beautiful color
- 292 Imperial green Ripple vase - 13" h x 3.25" base
- 293 Imperial mari. Ripple vase-5.5" h x 2.5" base
- 294 Imperial mari. Ripple vase-8" h x 2.5" base
- 295 Imperial bright mari. Ripple vase-9" h x 3.25" base
- 296 Imperial amber Ripple vase-11.25" x 3.5
- 297 Imperial elec. purple Ripple vase-12" h x 3.5" base
- 298 Imperial bright mari. Morning Glory funeral vase 17.5" x 4.75" base. Color all the way down
- 299 Fenton 6" Open Edge 2 sides up hat- smoky lavender
- 300 Fenton 6" Open Edge 2 sides up hat- amber opal
- 301 Fenton 6" Open Edge 2 sides up hat- red
- 302 Fenton 6" Open Edge 2 sides up hat- white
- 303 Fenton 6" Open Edge 2 sides up hat- ice blue
- 304 Fenton 6" Open Edge 2 sides up hat- green
- 305 Fenton 5.5" Open Edge ruffled hat- cobalt
- 306 Fenton 5.5" Open Edge ruffled hat- cobalt flared
- 307 Fenton 5.5" Open Edge ruffled hat- green
- 308 Fenton 5.5" Open Edge ruffled hat- vaseline
- 309 Fenton 6" Open Edge JIP hat- sapphire-chip on base
- 310 Fenton 6" Open Edge JIP hat- marigold
- 311 Fenton 5.5" Open Edge square hat Red
- 312 Fenton 5.5" Open Edge square hat sapphire
- 313 Fenton 5.5" Open Edge square hat green
- 314 Fenton 6.5" Blackberry Spray open edge ruffled hat-red/amberina
- 315 Fenton 6.5" Blackberry Spray open edge ruffled hat-cobalt
- 316 Fenton 6.5" Blackberry Spray open edge ruffled hat-powder blue
- 317 Fenton 7" Blackberry Spray open Edge 2-sides up hat - marigold. Some webbing still filled with glass. Pretty cool!
- 318 Fenton 6" Blackberry Spray Open Edge 3-sides turned up hat - Marigold. Cool whimsy
- 319 Fenton 6" Blackberry Spray Open Edge ruffled hat -powder blue
- 320 Fenton 6" Blackberry Spray Open Edge ruffled hat -green
- 321 Fenton 6" Blackberry Spray Open Edge ruffled hat -amethyst
- 322 Imperial 6" mari. Morning Glory vase
- 323 Imperial 6" smoke Morning Glory vase
- 324 Imperial 6.5" mari. Morning Glory vase
- 325 Imperial 6.5" mari. Morning Glory vase
- 326 Imperial 5.5" green Morning Glory vase
- 327 Imperial 5.25" mari. Thin Rib & Drape vase
- 328 Nwood 7.5" IG Drapery vase. Feet ok
- 329 Nwood IB Drapery candy dish. Feet ok
- 330 Nwood cobalt blue Drapery candy dish. Feet ok
- 331 Nwood pastel mari. Poppy pickle dish. Stunner!
- 332 Nwood elec. blue Poppy pickle dish.
- 333 Nwood mari. Lustre Flute cream / sugar
- 334 Nwood pastel AO Fine Cut & Roses candy dish Nick on two toes
- 335 Nwood horehound Fine Cut & Roses candy dish Nick on two toes
- 336 Nwood white Fine Cut & Roses candy dish
- 337 Nwood IG Fine Cut & Roses candy dish Nick on one toe
- 338 Nwood 6" purple G & C handgrip plate
- 339 Nwood 7.5" green G & C handgrip plate
- 340 Nwood purple Daisy & Plume candy dish. Small flake on one leg
- 341 Nwood dark mari. Poppy compote. Very Nice!
- 342 Nwood 5.75" green Leaf Column squatty vase
- 343 Fenton 6.5" blue 1911 Elks Atlantic City ICS bowl
- 344 Fenton red 10.5" Fine Rib vase
- 345 Fenton 9.5" vaseline Fine Rib vase
- 346 Fenton 9" blue Fine Rib vase
- 347 Fenton 10" red Fine Rib vase. Solid red
- 348 Fenton 12.5" amber Fine Rib swung vase
- 349 Fenton Panel 12" celeste blue vase. VERY Rare
- 350 Fenton 6" lime green opal Boggy Bayou vase
- 351 Fenton 9.5" mari. Knotted Beads vase with crimped top
- 352 Fenton 9" dark mari. Butterfly & Berry vase
- 353 Fenton 9" blue Butterfly & Berry vase
- 354 Fenton 11.5" green April Showers vase
- 355 Fenton 11.5" blue April Showers vase
- 356 Fenton 15" mari. Diamond Rib & Spearhead swung vase

- 357 Fenton 15" green Rustic mid-size vase
- 358 Fenton 20.5" purple Rustic funeral vase
- 359 Dugan PO Border Plants 3/1 edge dome footed bowl
- 360 Dugan PO Starfish Compote
- 361 Dugan 7" frosty white Grapevine Lattice low ruffled bowl
- 362 Dugan white Constillation compote
- 363 Dugan 11" frosty white Persian Garden ICS bowl
- 364 2 light hanging chandelier w/ Dragon tongue shades Polished Brass hardware
- 365 3 light hanging chandelier w/ Pillar Rib shades RARE shades. Polished Brass hardware
- 366 4 light hanging chandelier w/ Daisy Chain shades Polished Brass hardware
- 367 Fenton mari. Stag & Holly giant rosebowl
- 368 Fenton 7" mari. Lions ruffled bowl
- 369 Fenton 6.5" green Blackberry Spray JIP hat
- 370 Fenton 6" vaseline Blackberry Spray ruffled hat
- 371 Fenton 6.5" brick red Blackberry Spray 2-side hat
- 372 Fenton green Stippled Ray square bon bon
- 373 Fenton blue Birds & Cherries square bon bon
- 374 Fenton green Butterflies square bon bon
- 375 Fenton blue Captive Rose square bon bon
- 376 Fenton bright green Captive Rose cardtray
- 377 Fenton 7" mari. Lotus & Grape JIP footed plate
- 378 Fenton purple 6" Feathered Serpant tri-cornered plate
- 379 Fenton green Wreath of Roses stemmed bon bon
- 380 Fenton purple Wreath of Roses stemmed bon bon
- 381 Fenton 6" purple Peacock Tail hat
- 382 Fenton green Peacock Tail compote
- 383 Fenton mari. Persian Medallion ruffled compote with crimped edge
- 384 Fenton mari. Mikado compote, open bubble on base
- 385 Fenton 9.5" mari. Dragon & Strawberry footed ruffled bowl. Very dark color
- 386 Fenton 10" pastel mari. Stag & Holly footed ICS bowl
- 387 Fenton 12" dark mari. Two Flowers footed chop plate. A scorcher!
- 388 Carnival Glass hatpin - Six Plums
- 389 Carnival Glass hatpin -Dragonflies
- 390 Carnival Glass hatpin -Top O' Morning
- 391 Carnival Glass hatpin - Tufted Throw Pillow
- 392 Carnival Glass hatpin - Big Butterfly
- 393 Carnival Glass hatpin - celeste Rooster
- 394 Carnival Glass hatpin - Triads
- 395 Sowerby mari. Hen on Nest
- 396 Crown Crystal Australian 9" BA Swan 16- ruffled bowl
- 397 Imperial 6" Heavy Diamonds vase
- 398 European 9.5" mari. Ft'd Prism Panels vase
- 399 Rindskopf? mari. 14" Art Glass vase, small section of threading missing from tail.. Never seen this before
- 400 European 8" mari. dome footed bowl
- 401 Nwood purple Wild rose flared candy dish
- 402 Nwood emerald green Lovely flared candy dish. Has internal stress
- 403 Dugan 8" purple Double Stem Rose dome footed bowl. Tiny nipper on collar base
- 404 2-pieces Westmoreland -4" teal butterfly & Prisms teal bonbon (Scarce color)
- 405 mari. Woodpecker wall pocket

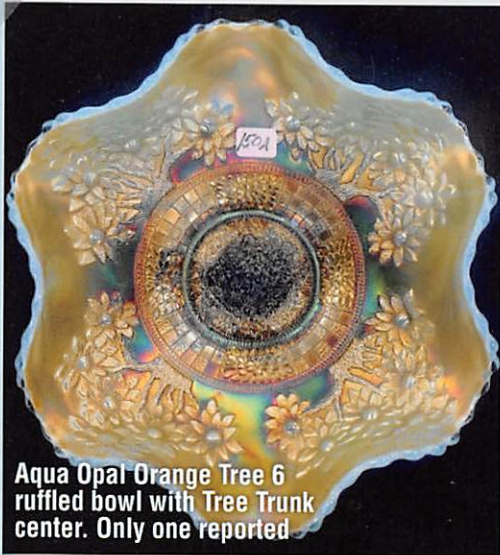




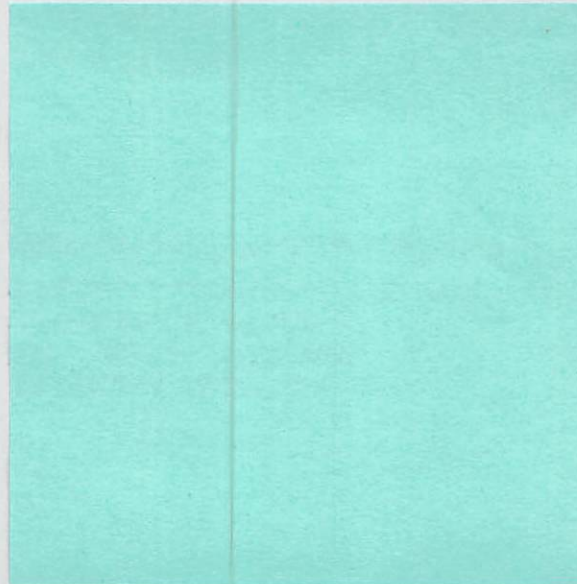
**MATTHEW WRODA
AUCTIONS**

58 East Main St • Westfield, NY 14787
937-548-7835

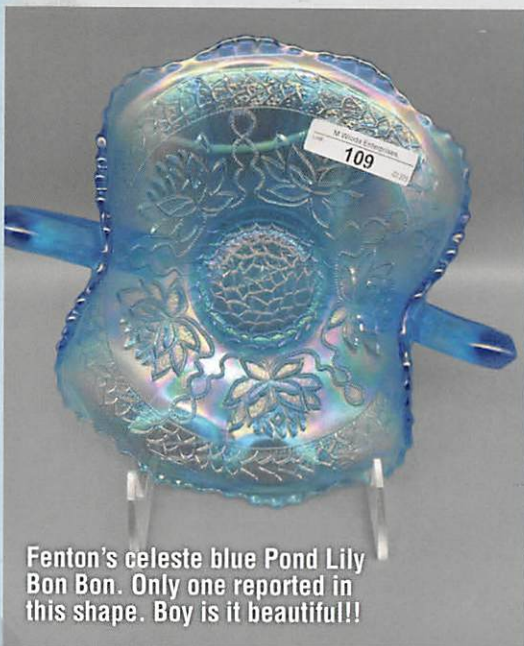
PRESORTED
FIRST CLASS MAIL
U.S. POSTAGE
PAID
CELINA, OH
PERMIT NO. 99



**Aqua Opal Orange Tree 6
ruffled bowl with Tree Trunk
center. Only one reported**



Keystone Carnival Glass Convention 2022



**Fenton's celeste blue Pond Lily
Bon Bon. Only one reported in
this shape. Boy is it beautiful!!**

Keystone Carnival Glass Convention 2022 May 12-14th 2022

**Holiday Inn - Grantville, PA.
604 Station Road Grantville, PA 17028**

For reservations please call 717.469.0661

Directions off of I- 81: Hershey Exit # 80 off of I-81 North or South

This year at the Keystone Convention we will be doing things a bit different than in past years. This year we will be conducting 2 auctions not 1! Friday May 13th at 2:00PM EST we will be conducting a Stretch Glass auction for Lance & Pat Hilkene of over 200 pieces! Then on Saturday May 14th we will be conducting the carnival glass auction featuring the fine collection of Al & Donna English of Ontario CA. Both auctions will be available on Auction Flex for live internet bidding if you cannot make it. Both auctions are open to the public which means you do not have to be a member of Keystone to participate, so come on over and bid on same great glass 2 days in a row.

Jim Wroda Auctioneer AU- 005729

**Visit our website site for full weekend coverage at: www.matthewwrodauctions.com
and click on the AUCTION FLEX logo for full catalog and on-line registration**