



*Heart of America
Carnival Glass
Association Convention*

**Kansas City, Missouri
Embassy Suites Airport Hotel
Open to the Public**

Carnival Glass 2022 Auction

Saturday, April 23, 9:30 a.m.



Seeck Auctions

Jim & Jan Seeck
641-424-1116



Jim & Jan Seeck

641-424-1116

SATURDAY, APRIL 23, 2022 — 9:30 a.m.

Embassy Suites Airport Hotel — Kansas City, Mo.

7640 NW Tiffany Springs Parkway

FRIDAY PREVIEW

★ **ABSENTEE and LIVE BIDDING is available on-line through Auction Flex at: www.seeckauction.com**

★ **NO BUYER'S PREMIUM -- EMAIL: jimjan@seeckauction.com**

TIA AND THE LATE CARROLL COOK COLLECTION AND THE ROBERT GRISSOM COLLECTION

Glad to be back! Seeck Auctions is excited to be back in Kansas City at the Embassy Suites for the HOACGA convention. Friends, new friends, educational seminars, room hopping, auctions, food and happy hour: everything that makes a convention special is back. This year we have combined two fabulous collections of glass to make one heck of an auction. **Tia and Carroll Cook** were extremely picky buyers and concentrated on buying the best and most beautiful glass. We are

honored to be selling the Millersburg People's vase, one of the most highly desired Millersburg pieces in the hobby. We are also very pleased to be selling a selection of glass from the **Bob Grissom Collection**. Bob was the long time past president of the HOACGA. The auction has several white pieces and several table sets as those were two of Bob's favorites to collect. Overall, this auction is for everyone so let's get back to normal and ***have a wonderful time at convention this year!***

Don't forget: Contemporary Carnival, Studio and Art Glass Online Only Auction #230 – Ends Thursday evening, April 21' beginning at 7 pm CST. (Glass from the Cook collection)

LODGING

Reservations can be made by calling the hotel directly at 816-891-7788. Ask for reservations and mention the HOACGA Convention. If you have a problem or questions about reservations at the hotel or questions about the convention, please email President Gary Sullivan at: stevenandgary@cox.net

Visit the Heart of America Carnival Glass Association on the Internet at: WWW.HOACGA.COM

Terms: Cash or Check, VISA, MasterCard and Discover accepted w/proper ID. **4% Clerking Fee** on all purchases made using credit cards. Announcements made day of sale take precedence over any printed information.

ABSENTEE BIDDING OPTIONS

- 1) Call us by phone at: (641) 424-1116
- 2) Prebid: Enter your bids from our website into our online catalog through the Auction Flex system.
 - *An exciting advantage of entering your bids online yourself,* is the option to be notified by email if you are outbid on an item. You will know when you are outbid on an item and you can increase your bid on that item or bid on something else.
- 3) Live Phone Bidding: Is available on pieces with an estimated sale price of \$500 or more. If you would like to participate in live phone bidding, contact us by **the Thursday before the auction.**
- 4) Real-time Bidding: Bid live during the auction through Auction Flex live webcast bidding.

There is a \$7 handling charge for each successful bid. Shipping and insurance charges are additional.

Bidders will be notified by phone/email if their bid(s) are successful. This will be done 1 - 3 days after the auction.

BID INCREMENTS:

\$1 - \$100/\$5	\$100 - \$200/\$10	\$200 - \$700/\$25	\$700 - \$1,500/\$50
\$1,500 - \$3,000/\$100	\$3,000 - \$5,000/\$250	\$5000+	Auctioneer's Discretion

- ___ 1. Persian Medallion hair receiver - white - nice
- ___ 2. Wild Blackberry IC shaped bowl - blue - scarce, nice
- ___ 3. Asters 5 1/4" letter vase - marigold - Brockwitz, scarce
- ___ 4. Double Stemmed Rose dome ftd 9" plate - white - very pretty with some stretch
- ___ 5. Cosmos miniature lamp - marigold - rare, nice
- ___ 6. Peacock & Dahlia IC shaped bowl - green - super pretty for this very scarce color
- ___ 7. Pair of Six Forty Nine candlesticks - white - rare color for these
- ___ 8. Pair of Five Forty Nine candlesticks w/black base - celeste blue - another scarce set
- ___ 9. Fisherman's mug - marigold - nice
- ___ 10. Star of David ruffled bowl - purple - very pretty
- ___ 11. Near Cut cologne bottle w/stopper - green - super nice
- ___ 12. Grape & Cable candle lamp - green - scarce, base has some manufacture issues, top is nice
- ___ 13. Soutache dome ftd 9" plate - peach opal - rare shape, nice
- ___ 14. Fenton's Grape & Cable 7" IC shaped bowl - marigold on moonstone - very nice



- ___ 15. M'burg Peoples ruffled top vase - amethyst - one of the most prestigious Millersburg pieces of Carnival Glass, less than 10 total vases known and this amethyst one is gorgeous! 145,000

- ___ 16. Grape & Cable bonbon - white - pretty
- ___ 17. Cosmos & Cane 4 pc. table set - white - tiny open bubble on edge of lid, great set

- ___ 18. Concord 9" plate - amethyst - a beautiful & scarce plate



- ___ 19. Concord 9" plate - marigold - another beauty, maybe the hardest color to find

- ___ 20. Beaded Shell mug - white super pretty, "Souvenir of Penn-Mar, MD."

- ___ 21. N's Town Pump - purple - very pretty example

- ___ 22. N's Town Pump - marigold - rare, dark & super beautiful!

- ___ 23. M'burg Peacock 10" crimped edge, ruffled bowl - marigold - radium, beautiful!

- ___ 24. Holly goblet shaped compote - lime green opal - rare

- ___ 25. M'burg Big Fish banana boat shaped whimsy bowl

22,000 - amethyst - radium & spectacular!!! an absolutely incredible piece, minor nick on outside edge of bowl, who cares, WOW!!



- ___ 26. Peacock Tail 6" plate - blue - extremely hard little plate to find, nice

- ___ 27. N's Wide Panel epergne - white - super piece w/ beautiful irid., a great opportunity, chips around lily hole

- ___ 28. N's Wide Panel epergne - green - scarce, nice, one nick on base by hole

- ___ 29. Spector's Department Store / Heart & Vine 9" plate - marigold - dark & beautiful, many people would call this pumpkin

- ___ 30. Drapery rose bowl - white - scarce

- ___ 31. Orange Tree powder jar - amethyst - very scarce

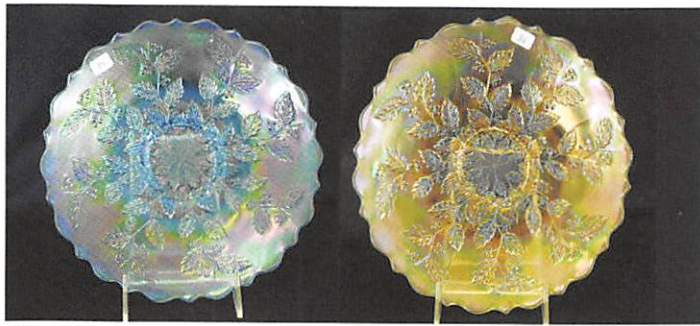


- color, nice

- ___ 32. M'burg Many Stars IC shaped bowl w/6 point star - green - radium, super!

- ___ 33. M'burg Many Stars IC shaped bowl w/5 point star - amethyst - radium, another rare beauty

- ___ 34. Brooklyn Bridge 10 ruffled bowl - marigold - very nice



- 16,000
 ___ 35. Holly 9" plate - celeste blue - an awesome piece, has super pretty irid., 1 or 2 known, WOW!
 ___ 36. Holly 9" plate - yellow - incredible! covered with yellow irid., only a few known
 ___ 37. Pair of Fenton's Four Forty Nine candlesticks with wheel carved etching - white - extremely rare



- ___ 38. Peacock at the Fountain 4 pc. table set - ice blue - very rare set, spooner bottom has chips, sugar lid has chips
 ___ 39. Peacock at the Fountain 4 pc. table set - white - another rare set, chip on rim of sugar lid
 ___ 40. Peacock at the Fountain 4 pc. table set - green - rare color, nice, couple chips on beads of spooner
 ___ 41. Peacock at the Fountain 4 pc. table set - blue - pretty, very hard to find color
 ___ 42. Peacock at the Fountain 4 pc. table set - purple - very nice, nick on inner rim of butter base
 ___ 43. Peacock at the Fountain 4 pc. table set - marigold - nice



- 22,000
 ___ 44. M'burg Big Fish blank shaped bowl - vaseline - extremely rare piece, has super pretty radium irid., incredible!
 ___ 45. Peacock & Grape ruffled bowl - red - scarce, nice
 ___ 46. Peacock & Grape ruffled bowl - peach opal - super, one of the best ones I've seen

- ___ 47. Peacock & Grape ruffled bowl - marigold on moonstone - rare, nice



- ___ 48. Peter Rabbit 9" plate - green - super example, out of the Morgan collection

- ___ 49. Peter Rabbit 9" plate - blue - slight polishing between 2 points but beautiful!

- ___ 50. Feathers 7 1/2" squatty vase - white - rare vase, nice

- ___ 51. Peacocks 9" plate w/plain back - ice blue - rare, pretty irid.
 ___ 52. Peacocks 9" plate w/ribbed back - green - very pretty
 ___ 53. Peacocks 9" plate w/ribbed back - lavender - another beauty
 ___ 54. Peacocks 9" plate w/ribbed back - purple - super nice
 ___ 55. Peacocks 9" plate w/ribbed back - white - nice
 ___ 56. Peacocks 9" plate w/ribbed back - ice green - very pretty
 ___ 57. Fern Brand Chocolates advertising double handgrip plate - amethyst - super nice, scarce



- 11,500
 ___ 58. M'burg Peacock at Urn chop plate - amethyst - radium, fabulous & very rare
 ___ 59. M'burg Peacock at Urn chop plate - marigold - another fantastic rarity, would call this satin but a very beautiful bright satin
 ___ 60. Harvest Poppy ruffled compote - green - nice
 ___ 61. Harvest Poppy ruffled compote - purple - pretty



- ___ 62. Harvest Poppy ruffled compote - marigold - dark, nice

- ___ 63. Grape & Cable 12 pc. master punch set - white - rare, super pretty, frosty example

- ___ 64. Circle Scroll 4 pc. table set - purple - rare set, very minor roughness around edge of butter dish lid



___ 65. Peacock Tail 9" plate - marigold - rare, dark & nice!

___ 66. M'burg Unlettered Courthouse 3 in 1 edge bowl - amethyst - very rare bowl & highly desirable especially in this 3 in 1 edge

___ 67. Holly ruffled bowl - marigold on moonstone - scarce, pretty

___ 68. Holly ruffled bowl - blue opal - rare color, nice

15,500 ___ 69. M'burg Whirling Leaves tri-cornered bowl - vaseline - fantastic with radium, marigold irid., M'burg vaseline!!!



___ 70. Poppy pickle dish - white - very nice



___ 71. Poppy pickle dish - green - very pretty

___ 72. Heavy Web large round bowl - peach opal - unusual shape & super pretty



___ 73. Thistle 9" plate - green - rare & pretty, a Fenton classic plate

___ 74. Smooth Panels 8" vase - marigold on milk glass - scarce, has 3 1/2" base



___ 75. Stippled Three Fruits 9" plate w/ribbed back - aqua opal - very pretty irid., opal on tips

___ 76. Stippled Three Fruits 9" plate w/ribbed back - horehound - rare color, may be the best one I have ever seen, Wow!

___ 77. Stippled Three Fruits 9" plate w/ribbed back - blue - electric & super

___ 78. M'burg Trout & Fly square shaped bowl - green - satin, rare & nice

___ 79. M'burg Trout & Fly square shaped bowl - amethyst - satin, rare & nice



___ 80. M'burg Trout & Fly square shaped bowl - marigold - satin, dark & nice

___ 81. Rustic 10" vase - peach opal - rare color, nice



___ 82. Lotus & Grape 9" plate - green - rare & very pretty

___ 83. Lotus & Grape 9" plate - blue - also rare & very nice

___ 84. N's Corn vase w/plain base - marigold - scarce

___ 85. N's Corn vase w/stalk base - green - nice

___ 86. N's Corn vase w/plain base - white - very pretty

___ 87. Peacocks PCE bowl w/plain back - white - rare color, nice

___ 88. Peacocks PCE bowl w/ribbed back - blue - electric, super

- ___ 89. Peacocks PCE bowl w/BW back - green - scarce w/BW back
- ___ 90. Gevurtz Bros advertising round bowl - amethyst - would have to call this a radium iridized piece, super



- ___ 91. Farmyard 6 ruffled bowl - purple - a super beautiful example with blue, red & yellow irid., outstanding piece

11,500

- ___ 92. Grape & Cable pin tray - white - rare, nice
- ___ 93. M'burg Hobnail butter dish top - blue - on a Cherries base which is green - base has large bruise, nick on hob of lid, rare
- ___ 94. M'burg Hobnail cvd sugar bowl - blue - super rare table set piece, outstanding



- ___ 95. M'burg Hobnail creamer - blue - another rare table set piece

- ___ 96. M'burg Hobnail spooner - green - rare, not sure I have seen a perfect green before, green Hobnail pieces are extremely rare, more rare than blue!

- ___ 97. Wild Blackberry 9" plate - marigold - extremely rare plate! 1 or 2 known

- ___ 98. Brazier's Candies handgrip advertising plate - amethyst - scarce, nice

- ___ 99. M'burg Strawberry ruffled compote - amethyst - radium, super



- ___ 100. N's Peacock at Urn chop plate - ice green - extremely rare plate with not many known, nice

- ___ 101. N's Peacock at Urn chop plate - purple - scarce, a beauty

- ___ 102. Three Row Open Edge IC shaped bowl - white - scarce, nice

- ___ 103. Butterfly & Berry hatpin holder - blue - rare, nice

- ___ 104. Butterfly & Berry hatpin holder - marigold - rare, nice

- ___ 105. Leaf Chain 9" plate - amethyst - scarce

- ___ 106. Leaf Chain 9" plate - blue - scarce, nice

- ___ 107. Leaf Chain 9" plate - marigold - beautiful



- ___ 108. Tree Trunk 18 1/2" funeral vase - purple - absolutely super! rare & beautiful

- ___ 109. M'burg Big Fish 3 in 1 edge bowl - green - radium, outstanding

- ___ 110. M'burg Big Fish 3 in 1 edge bowl - marigold - marigold, super nice

- ___ 111. Rose Show ruffled bowl - aqua opal - beautiful irid. w/great opal

- ___ 112. Rose Show ruffled bowl - marigold - dark, nice

- ___ 113. Broken Arches 14 pc. punch set - purple - super beautiful set

- ___ 114. Raspberry ftd ruffled candy dish - lime green - rare color, pretty



___ 115. Fruits & Flowers round whimsy bonbon - purple - this is a super cool piece! Have not seen this before, a wonderful whimsy!



___ 116. Grape & Cable turned in centerpiece bowl - white - scarce



___ 117. Inverted Feather 4 pc. table set - purple - very rare set to find, base of butter dish is Inverted Strawberry & has minor nicks around edges

___ 118. M'burg Peacock at Urn ruffled Mystery bowl - blue - satin, super rare & pretty, a great piece of M'burg blue



___ 119. M'burg Peacock at Urn ruffled Mystery bowl - green - satin, very pretty

___ 120. M'burg Peacock at Urn ruffled Mystery bowl - amethyst radium, nice, hard to find this w/the radium finish



___ 121. Poinsettia & Lattice ftd ruffled bowl - purple - spectacular

___ 122. Poinsettia & Lattice ftd ruffled bowl - marigold - dark, pretty

___ 123. Persian Medallion 9" plate - white - rare, nice

___ 124. Persian Medallion 9" plate - blue - super pretty for these

___ 125. Peacock at the Fountain ruffled compote - ice blue - very pretty



___ 126. Peacock at the Fountain ruffled compote - white - nice

___ 127. Peacock at the Fountain ruffled compote - marigold - very nice

___ 128. Octagon 7 pc. wine set - purple - very rare set & beautiful

✓ 11,000

___ 129. M'burg Peacock at Urn 10" 3 in 1 edge bowl - blue - extremely rare, especially because it is blue AND radium



___ 130. M'burg Peacock at Urn 10" 3 in 1 edge bowl - amethyst - radium & super, bird has lots of color!

___ 131. M'burg Strawberry Wreath 10" IC shaped bowl - amethyst - radium & fantastic

___ 132. M'burg Strawberry Wreath 10" IC shaped bowl - green - radium & pretty

___ 133. Orange Tree 4 pc. table set - white w/gold trim - very rare set, large chip on top edge of sugar bowl base, tiny pinpoint on one foot of spooner & butter

___ 134. Greek Key 9" plate w/BW back - green - scarce, pretty

___ 135. Greek Key 9" plate w/BW back - marigold - scarce, nice

___ 136. Fenton's Florentine #449 8 1/2" candlesticks - red - rare set, pretty

___ 137. Blackberry & Rays ruffled compote - amethyst - scarce, nice

___ 138. Blackberry & Rays ruffled compote - marigold - nice

___ 139. M'burg Nesting Swan ruffled bowl - green - radium, fantastic

___ 140. M'burg Nesting Swan ruffled bowl - amethyst - radium, nice





___ 141. M'burg Nesting Swan ruffled bowl - marigold/vaseline - has fabulous, yellow, pink & blue irid., this has a very slight yellow coloring to base, it does glow but most M'burg marigold does

___ 142. 1911 Birmingham Age Herald 9" plate - amethyst - super example

___ 143. Blackberry Block tankard water pitcher - marigold - dark, pretty, one of the few pitchers in the auction

___ 144. Diamond Point 7" squatty vase - ice blue - scarce, nice

___ 145. Diamond Point 7 1/2" squatty vase - white - nice

___ 146. Leaf & Beads flared out nut bowl w/ beaded edge - green - super pretty, minor manufacture rough spot on point

___ 147. Dragon's Tongue ruffled ftd bowl - marigold - dark, super, highly desirable



___ 148. Isaac Benesch & Sons advertising ruffled bowl - amethyst - nice example



___ 149. M'burg Whirling Leaves diamond or square shaped crimped edge bowl - vaseline - a wonderfully rare piece of M'burg vaseline that is super pretty

___ 150. M'burg Whirling Leaves diamond or square shaped crimped edge bowl - marigold - super pretty & rare

___ 151. M'burg Holly Sprig 10" ruffled bowl - green - radium, pretty

___ 152. Hearts & Flowers 9" plate w/ribbed back - purple - scarce, pretty

___ 153. Hearts & Flowers 9" plate w/ribbed back - marigold - another pretty one

___ 154. Peach 4 pc. table set - white w/gold trim - rare set, small nick on backside of butter dish base

___ 155. Honeycomb & Beads 7" crimped edge plate - purple - pretty

___ 156. Stippled Good Luck 9" plate w/ribbed back - marigold - a beautiful plate!

___ 157. N's Eight Sided bushel basket - ice blue - hard to find color

___ 158. Moonprint 9" vase - marigold - scarce, pretty



___ 159. M'burg Nesting Swan tri-cornered bowl - amethyst - radium, super, a neat piece of M'burg that is hardly ever seen

___ 160. Dragon & Lotus ruffled bowl - amethyst opal - super example

___ 161. Dragon & Lotus ruffled bowl - red - another great example

___ 162. Dragon & Lotus ruffled bowl - lime green opal - not many better

___ 163. Dragon & Lotus ruffled bowl - peach opal - covered with beautiful irid.

___ 164. Stippled Peacocks 9" plate w/ribbed back - blue - electric, nice

___ 165. Stippled Peacocks 9" plate w/ribbed back - marigold - pretty

___ 166. Scroll Embossed miniature ruffled compote - purple - nice

___ 167. Border Plants dome ftd handgrip plate - peach opal - scarce piece, nice

___ 168. Butterfly bonbon w/threaded back - blue - scarce, nice

___ 169. Butterfly bonbon w/threaded back - purple - a beauty

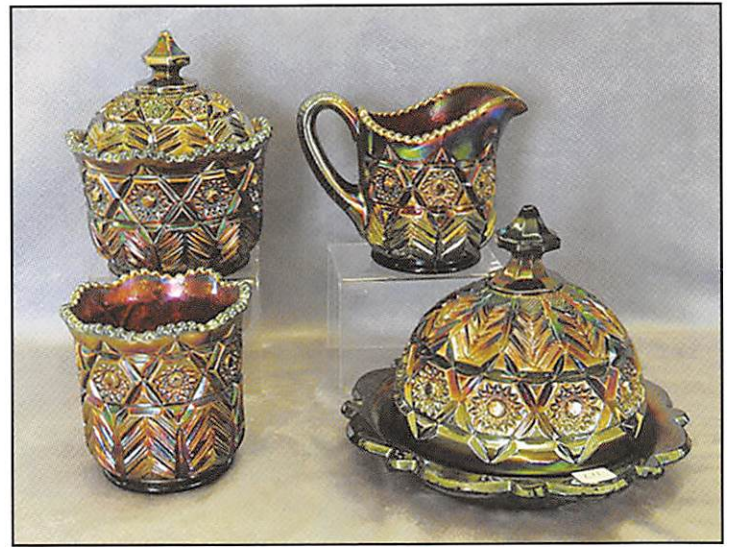


___ 170. Tree Trunk 16" funeral vase - purple - outstanding! has beautiful irid.

___ 171. M'burg Trout & Fly diamond shaped bowl - green - satin, very hard to find, nice 550

___ 172. M'burg Trout & Fly diamond shaped bowl - amethyst - satin & pretty

___ 173. M'burg Trout & Fly diamond shaped bowl - marigold - satin, pretty, what a great set!



___ 187. M'burg Country Kitchen 4 pc. table set - amethyst - extremely rare set & highly desirable, rough points on spooner, minor nick on sugar lid

___ 188. Wishbone ftd ruffled bowl - white - pretty

___ 189. Blossomtime ruffled compote - green - scarce, nice

___ 174. Carnival Hobstar 4 pc. table set - purple - beautiful, quite scarce, minor nick on base of creamer

___ 175. Coral ruffled bowl - blue - scarce in blue

___ 176. Captive Rose 9" plate - amethyst - a beauty for these

___ 177. Captive Rose 9" plate - green - scarce, nice

___ 178. Captive Rose 9" plate - blue - pretty, manufacture pushed in spots in center

___ 179. Captive Rose 9" plate - marigold - pretty

___ 180. Souvenir of J.N. Ledford Company Cooleemee, N.C. / Heart & Vine 9" plate - marigold - dark & super, very rare plate!

___ 181. M'burg Trout & Fly IC shaped bowl - green - radium & pretty

___ 182. M'burg Trout & Fly IC shaped bowl - amethyst - another radium beauty

___ 183. Old Rose Distilling / Stippled Grape & Cable Variant 9" plate w/ribbed back - green - very nice example

___ 184. Hearts & Flowers ruffled compote - ice blue - scarce, nice

___ 185. Hearts & Flowers ruffled compote - green - hard color to find

___ 186. Hearts & Flowers ruffled compote - blue - has electric highlights



___ 190. Fenton's Peacock at Urn ruffled bowl - Persian blue - very rare color & beautiful

___ 191. Fenton's Peacock at Urn ruffled bowl - marigold on moonstone - a beauty, rare

___ 192. Fenton's Peacock at Urn ruffled bowl - green - super

___ 193. Fenton's Peacock at Urn ruffled bowl - amethyst - very pretty

___ 194. Fenton's Peacock at Urn ruffled bowl - blue - nice

___ 195. Fenton's Peacock at Urn ruffled bowl - marigold - nice

___ 196. Wishbone epergne - white - super pretty example for this rare piece

___ 197. Wishbone epergne - green - hard to find

___ 198. Wishbone epergne - amethyst - very scarce, light lime on inside of bottom, repair on tip of lily

___ 199. Wishbone epergne - marigold - scarce



___ 200. N's Peacock at Urn master IC bowl - green - super rare color, nice, has piece of ash on side edge of bowl

___ 201. Inverted Strawberry powder jar - green - nice



___ 202. M'burg Peacock master IC shaped bowl - marigold - radium & fantastic, this is a beauty!

___ 203. M'burg Peacock master IC shaped bowl - amethyst - radium, another beauty!

___ 204. Fruits & Flowers bonbon - ice blue - pretty

___ 205. Fruits & Flowers bonbon - aqua opal - pretty

___ 206. Butterfly & Berry 4 pc. table set - green - scarce color, 2 points on butter dish base have nicks

___ 207. Banded Grape & Cable hatpin holder - marigold - hard to find this banded version, has lime in interior under prongs

___ 208. Banded Grape & Cable dresser tray - marigold - not only hard to find, but beautiful

___ 209. Banded Grape & Cable pin tray - amethyst - another hard to find piece, nice

___ 210. M'burg Nesting Swan crimped edge square shaped bowl - marigold - radium, nice, very hard to find



___ 211. Fenton's Peacock at Urn 9" plate - blue - electric, a super dooper!

___ 212. Fenton's Peacock at Urn 9" plate - marigold - awesome is an understatement

___ 213. Fenton's Peacock at Urn 9" plate - white - pretty



___ 214. Ribbed Tornado vase - amethyst - outstanding!! beautiful irid.

___ 215. Border Plants dome ftd 3 in 1 edge bowl - peach opal - scarce, nice

___ 216. Scroll Embossed 9" plate - purple - super

___ 217. Scroll Embossed 9" plate - marigold - nice

___ 218. Stippled Three Fruits PCE bowl w/ribbed back - purple - pretty

___ 219. Feather Stitch ruffled bowl - marigold - scarce pattern

___ 220. M'burg Courthouse 3 in 1 edge bowl - lavender - rare color, rare shape, rare piece!

___ 221. M'burg Whirling Leaves tri-cornered crimped edge bowl - green - radium, pretty



___ 222. M'burg Whirling Leaves tri-cornered crimped edge bowl - amethyst - radium, nice

___ 223. M'burg Whirling Leaves tri-cornered crimped edge bowl - marigold - super radium irid.!

___ 224. Peacocks ruffled bowl w/ribbed back - aqua opal - beautiful, birds are great

___ 225. Peacocks ruffled bowl w/ribbed back - white - scarce color, nice

___ 226. Peacocks ruffled bowl w/ribbed back - green - pretty

___ 227. Chrysanthemum lg size ftd IC shaped bowl - blue - pretty

___ 228. Stippled Three Fruits Medallion spt ftd ruffled bowl - white - nice

___ 229. Big Basketweave 10" vase - sapphire - scarce color, nice

___ 230. Beaded Shell 4 pc. table set - marigold - scarce set

___ 231. M'burg Many Stars ruffled bowl w/6 pt star - amethyst - radium, super

___ 232. M'burg Many Stars ruffled bowl w/6 pt star - marigold - radium, another super one

___ 233. Dandelion tankard water pitcher - purple - very beautiful, WOW



___ 234. Heavy Grape hdl nappy - aqua - rare piece, super nice



___ 235. M'burg Trout & Fly ruffled bowl - lavender - beautiful satin, the fishing is outstanding!

___ 236. Pair of Moonprint 8 1/2" candlesticks - marigold - quite rare, manufacture roughness around bottom edge of bases



___ 237. Apple Blossom Twigs 9" plate w/smooth edge - purple - scarce, nice

___ 238. Apple Blossom Twigs 9" plate w/smooth edge - peach opal - pretty

___ 239. Orange Tree hatpin holder - white - rare color, this has super pretty irid.

___ 240. Orange Tree 9" plate - blue - very pretty

___ 241. Fern ruffled compote - green - nice

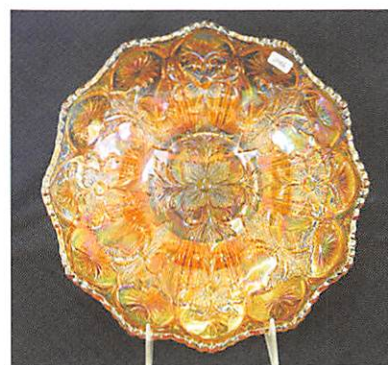
___ 242. M'burg Big Fish IC shaped bowl - green - radium & super!

___ 243. M'burg Holly Sprig 8" crimped edge bowl - amethyst - radium, pretty



___ 244. Leaf Chain ruffled bowl - ice green - extremely rare color especially with great irid., this is a beauty

___ 245. M'burg Fleur de Lis IC shaped bowl - green - radium, super



___ 246. M'burg Fleur de Lis IC shaped bowl - marigold - radium and just beautiful!

___ 247. Grape & Cable hatpin holder - green - nice

___ 248. Grape & Cable dresser tray - purple - nice

___ 249. Wild Strawberry 10" ruffled bowl w/ BW back - white - rare, not many around

___ 250. Crucifix candlesticks - marigold - always desired

___ 251. Good Luck 9" plate w/ribbed back - green - scarce, nice, chip on cleat

___ 252. Cherry & Cable 4 pc. table set - marigold - rare set





___ 253. M'burg Bernheimer Brothers / Many Stars ruffled bowl - blue - satin, rare, pretty

___ 254. M'burg Holly Sprig card tray shaped bonbon - green - radium, pretty

___ 255. M'burg Nesting Swan crimped edge ruffled bowl - marigold - radium, hard shape to find

___ 256. Australian Kangaroo 6 pc. ruffled berry set - dark - nice set

___ 257. M'burg Peacock at Urn 7" 3 in 1 edge shotgun bowl - amethyst - super pretty, 3 spots on edge are slightly polished

___ 258. Stippled Strawberry PCE bowl w/BW back - green - scarce color, nice

___ 259. Stippled Strawberry PCE bowl w/ribbed back - purple - nice

___ 260. York 6" plate - marigold - EDA, very scarce



___ 261. Embroidered Mums 9" plate w/plain back - white - extremely rare color, not many known

___ 262. Drapery candy dish - green - rare color & super!

___ 263. Fentonia 4 pc. table set - marigold - super nice set, hard to find complete

___ 264. Rose Show 9" plate - purple - stunning!

___ 265. M'burg Little Stars 7" ruffled bowl - amethyst - satin, nice



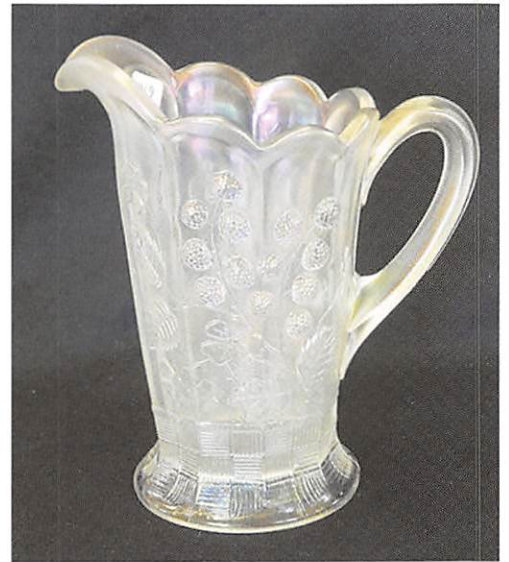
___ 266. M'burg Many Stars 3 in 1 edge bowl w/5 pt star - green - radium, pretty

___ 267. M'burg Many Stars 3 in 1 edge bowl w/5 pt star - amethyst - radium, pretty

___ 268. M'burg Many Stars 3 in 1 edge bowl w/6 pt star - marigold - radium, pretty

___ 269. Raspberry milk pitcher - white - pretty irid., quite scarce

___ 270. Raspberry milk pitcher - purple - nice



___ 271. Nippon 9" plate w/BW back - purple - very pretty example, hard to find

___ 272. Nippon 9" plate w/BW back - marigold - another pretty and hard to find plate

___ 273. Corinth 8 1/2" JIP vase - blue opal - scarce color, nice

___ 274. Fenton's Flowers rose bowl - white - scarce, nice



___ 275. M'burg 1910 Detroit Elks 3 in 1 edge 7" bowl - amethyst - radium, super nice & rare

___ 276. Orange Tree w/trunk 9" plate - white - pretty

___ 277. M'burg Peacock at Urn IC shaped Mystery bowl - amethyst - radium, great example

___ 278. M'burg Peacock at Urn IC shaped Mystery bowl - marigold - radium, nice

___ 279. Poppy Show 9" plate - blue - very pretty & highly desirable

___ 280. Poppy Show 9" plate - marigold - pretty

___ 281. Poppy Show 9" plate - white - pretty



- ___ 282. M'burg Hanging Cherries 4 pc. table set - aqua/green - very rare set, every piece looks aqua except the spooner which looks more green, nice
- ___ 283. Wishbone & Spades 6" plate - peach opal - pretty little plate
- ___ 284. Shell 9" plate - smoke - very pretty

___ **285. M'burg Big Fish diamond shaped bowl - green - satin, pretty, rare shape**



- ___ 286. Diamond Lace 7 pc. water set - purple - pretty
- ___ 287. Holly IC shaped bowl - marigold on milk glass - rare color, nice
- ___ 288. Dreibus Parfait Sweets advertising ruffled bowl - purple - nice
- ___ 289. Mustard - marigold
- ___ 290. Double Stemmed Rose dome ftd ruffled bowl - purple - pretty



- ___ 291. Orange Tree loving cup - amethyst - very scarce color
- ___ 292. Orange Tree loving cup - blue - nice

___ **293. Feather Stitch 9" plate - marigold - only one I've seen, has unusual surface on back of plate**

___ 294. M'burg Seacoast pin tray - amethyst - scarce, very nice

___ **295. M'burg Nesting Swan diamond shaped crimped edge bowl - green - radium, super, rare shape**



___ 296. Ballard 6" advertising plate - amethyst - great example



___ **297. M'burg Big Fish ruffled bowl - green - radium & super beautiful**

___ 298. M'burg Big Fish ruffled bowl - marigold - radium, nice



___ **299. Rustic 17" funeral vase - white - very pretty irid., a beauty**

___ 300. Rustic 19" funeral vase - marigold - dark, nice

___ 301. Fenton Portly candlesticks - red - rare set

___ **302. Rose Show Variant 9" plate - marigold - beautiful irid.**

___ 303. Persian Garden 6" plate - purple - a beauty for this rare color

___ 304. Grape & Cable ruffled ftd fruit bowl - white - nice



___ 305. Pearly Dots 9" plate - amethyst - very rare in this shape, nice



___ **306. Fenton's Peacock at Urn IC shaped bowl - aqua - rare color, nice**

___ 307. Fenton's Peacock at Urn IC shaped bowl - lime green - another beauty

___ 308. Fenton's Peacock at Urn IC shaped bowl - green - nice

___ 309. Fenton's Peacock at Urn IC shaped bowl - amethyst - beautiful

___ 310. Fenton's Peacock at Urn IC shaped bowl - blue - very pretty

___ 311. Fenton's Peacock at Urn IC shaped bowl - marigold - nice

___ 312. Strawberry epergne - purple - rare, chip on lily base side

___ 313. Peacock & Dahlia 7" plate - marigold - scarce & very nice

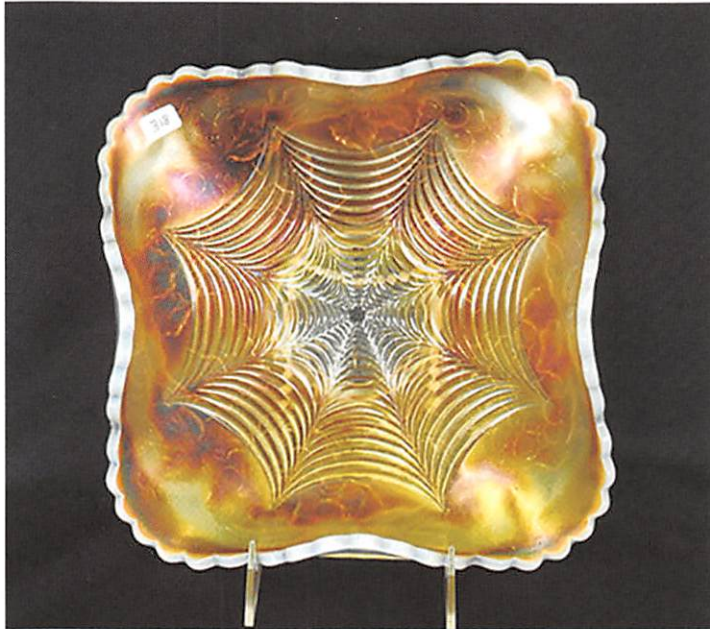


___ 314. Stippled Strawberry 9" plate w/ BW back - green - very pretty & quite scarce

___ 315. Amaryllis miniature plate - marigold - lots of pretty pink irid.

___ 316. Nippon PCE bowl w/ribbed back - ice blue - nice

___ 317. M'burg Sunflower pin tray - amethyst - scarce, minor pinpoint on backside of leaf



625 ___ 318. Heavy Web square shaped bowl - peach opal - rare piece!

___ 319. M'burg Peacock at Urn 10" IC shaped bowl - amethyst - radium, pretty

___ 320. Hattie chop plate - marigold - super nice, scarce

___ 321. Vintage 9" IC shaped bowl - celeste blue - great bowl w/super stretchy irid., rare!



___ 322. M'burg Holly Sprig Variant 8" IC shaped bowl - green- radium, fabulous

___ 323. Exchange Bank advertising round bowl - amethyst - super nice

___ 324. Basketweave Open Edge IC shaped bowl - celeste blue - scarce, nice

___ 325. Autumn Acorn 9" plate - green - scarce, nice

___ 326. Leaf & Beads flared nut bowl - white - super nice

___ 327. Victorian lg ruffled bowl - purple - nice

___ 328. Hearts & Flowers PCE bowl w/ribbed back - marigold - pretty

___ 329. Drapery Variant 7 1/2" vase - blue - very pretty



___ 330. M'burg Strawberry Wreath Variant 10" tri-cornered bowl - marigold - radium, pretty

___ 331. Fenton's Grape & Cable 7" ruffled bowl - red - nice

___ 332. Pansy ruffled bowl - purple - super

___ 333. Dragon & Lotus IC shaped bowl - marigold on moonstone - super pretty example, scarce

___ 334. Eat Paradise Sodas advertising plate - amethyst - nice

___ 335. Zippered Loop 8" kerosene lamp - marigold - has 4 3/4" base, nice

___ 336. Hearts & Flowers ruffled bowl w/ribbed back - blue - electric, pretty, one point is rolled under (no damage)

___ 337. Dugan's Heavy Grape 11" ruffled bowl - peach opal - scarce, pretty

___ 338. Vintage 9" plate - teal green - unusual & rare color, nice

___ 339. Leaf & Beads rose bowl - white - nice

___ 340. Greek Key ruffled bowl w/ribbed back - blue - electric highlights

___ 341. M'burg Trout & Fly IC shaped bowl - lavender - satin & pretty, rare

___ 342. M'burg Trout & Fly IC shaped bowl - green - satin & super, fish is beautiful

___ 343. M'burg Strawberry Wreath crimped edge square bowl - amethyst - radium, nice & quite scarce

___ 344. Blackberry Spray JIP CRE hat shape - aqua opal - beautiful, rare shape



___ 345. M'burg 1911 Campbell Beesley Co. advertising handgrip plate - amethyst - best one I have seen, mold strike is great, Wow!

___ 346. Tornado small size vase - marigold - very nice

___ 347. Fenton's Grape & Cable flared out centerpiece bowl w/plain interior - blue - fantastic irid., rare

- ___ 348. Wreathed Cherry 4 pc. table set - white w/red cherries & gold leaves - decoration is wonderful, super set
- ___ 349. Stippled Peacocks PCE bowl w/ribbed back - marigold - nice
- ___ 350. Apple Blossom Twigs 9" plate - blue - scarce, nice
- ___ 351. Embroidered Mums ftd bonbon - white - hard to find, pretty
- ___ 352. M'burg Many Stars ruffled bowl w/5 pt star - amethyst - radium & super



___ 353. Lions 7" plate - marigold - one of the nicer ones

___ 354. M'burg Trout & Fly 3 in 1 edge bowl - green - radium, beautiful

___ 355. 1910 Detroit Elks 7" ruffled bowl - amethyst - pretty



___ 365. Orange Tree w/trunk 6 ruffled bowl - celeste blue - spectacular irid. on this rare bowl, very few known, a great opportunity! \$13,000

___ 366. Orange Tree ruffled bowl - red - hard to find

___ 367. Scarab hatpin & 1 button - dark

___ 356. M'burg Peacock crimped edge deep round bowl - marigold - this is the blank shape with a crimped edge, radium & spectacular, an amazing piece of glass!

\$24,000



- ___ 357. Concord ruffled bowl - green - nice
- ___ 358. Coral 9" plate - marigold - scarce & nice
- ___ 359. Enameled Apple Blossom 4 pc. table set - blue - great set, chip on inner rim of butter dish base
- ___ 360. Stag & Holly 9" spt ftd plate - marigold - nice
- ___ 361. Peacock & Dahlia 7" ruffled bowl - aqua - scarce color, nice
- ___ 362. Tree Trunk 7 1/2" squatty vase - blue - nice, small rub on one point

\$3,750

___ 363. M'burg Trout & Fly crimped edge deep ruffled bowl - marigold - radium, spectacular piece!

___ 364. Fenton's Peacock at Urn 6 ruffled bowl - blue - electric, nice



___ 368. Little Daisies ruffled bowl - marigold - another very rare piece of glass, very pretty \$1,200

- ___ 369. Art glass 2 lily epergne - white - neat piece
- ___ 370. Stippled Grape & Cable 9" plate w/BW back - green - very nice
- ___ 371. Grape & Cable perfume bottle - marigold - scarce
- ___ 372. Wishbone 9" ftd plate - purple - pretty
- ___ 373. M'burg Leaf & Little Flowers sherbet shaped compote - green - satin & nice
- ___ 374. Large 9 1/2" handle stemmed compote - marigold
- ___ 375. Pearly Dots ruffled compote - blue opal - scarce

171.



2022 CARNIVAL GLASS AUCTION

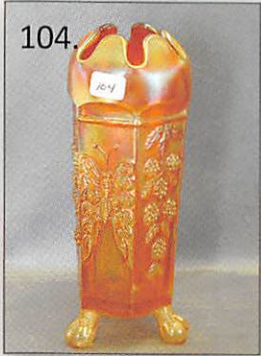
Sat., April 23, 9:30 a.m.

Embassy Suites Airport Hotel,
Kansas City, Missouri

Seek Auctions

Jim & Jan Seek
641-424-1116

104.



294.



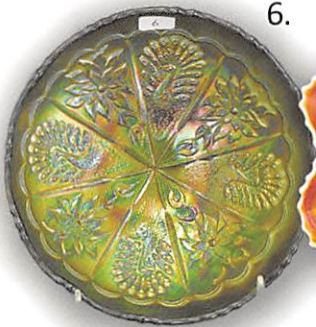
351.



229.



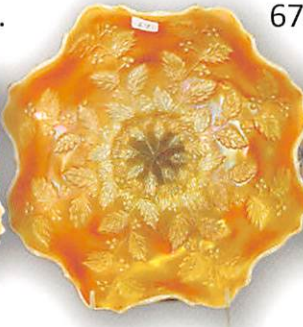
6.



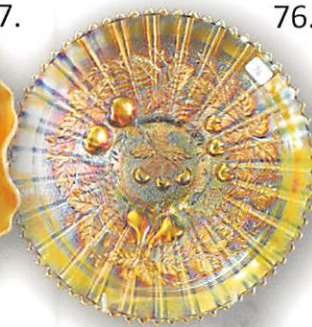
46.



67.



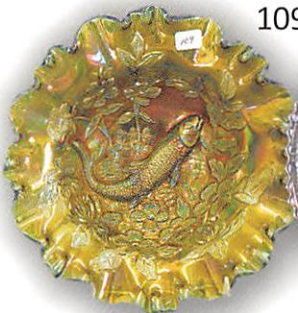
76.



87.



109.



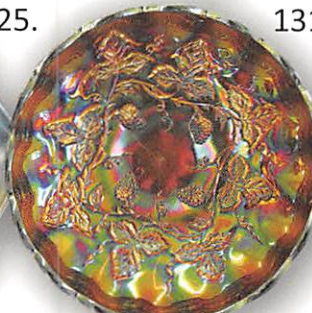
123.



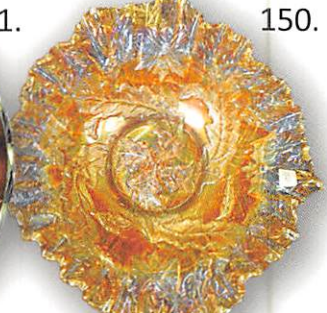
125.



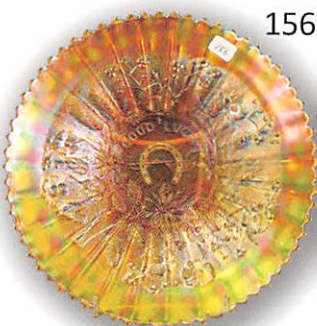
131.



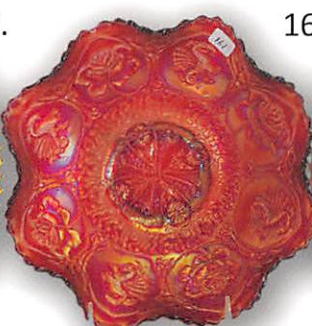
150.



156.



161.



296.



303.



341.

