



# Leominster

MA

## New England Carnival Glass Convention 2021

**Saturday, September 11th 2021 at 9:30 AM EST**

Preview Friday 11:00am to 4:30 PM EST

Doors open at 8:00AM Saturday

**Double Tree by Hilton**

**99 Erdman Way. Leominster, MA 01453**

978-534-9000 and use NEC as the group code to get the preferred rate of \$115 BEFORE August 8th.

**Terms & Bidding:** Cash Check. Visa MC Discover PayPal. There is a 4% buyer premium with a 4% discount for Cash & Check

**Ways to bid at this auction if you cannot make it.**

A> You can mail your bids to MWAS 58 East Main St Westfield, NY 14787

B> You can call in Absentee bids & Live Phone bids call- 937-548-7835

C> Use Auction Flex / HiBid and place your absentee bids that will be downloaded the morning of the auction. Remember, EVERY bid is time stamped so do not delay.

D> LIVE internet bidding using Auction Flex with LIVE Audio and Video. There is NO fee to use this platform.

NOTE: At this time, we DO NOT use Auction Flex's CC payment system.

**Shipping:** All shipping terms are available on our website.

We have one heck of an auction for you this year at the New England Carnival Glass Convention, held in Leominster MA at the Double Tree Hotel. This year we will be selling the Hallman collection in it's entirety and part one of the Margaret Ports collection. This is one of the finest auctions of the year with many special pieces for you to choose from. Wonderful Millersburg Glass including a Marigold Morning Glory Tankard, Northwoods famous Acorn Burr punch sets in 5 colors, an ice blue Grape & Cable Mid-size punch set to WONDERFUL COLOR! This is not an auction to miss! We hope to see you in Leominster, but if you cannot make it you will be able to bid LIVE with auction Flex / Hi-Bid. Live audio and video is available.

**The Hallman & Ports Collections**

Visit us on the web at: [www.matthewwrodauctions.com](http://www.matthewwrodauctions.com)

Email us at [info@matthewwrodauctions.com](mailto:info@matthewwrodauctions.com) or call 937-459-9556

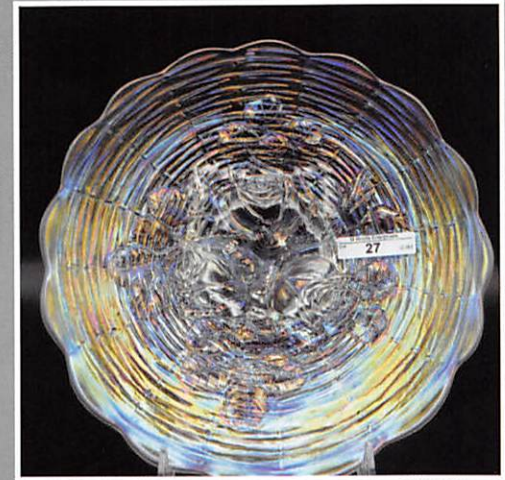
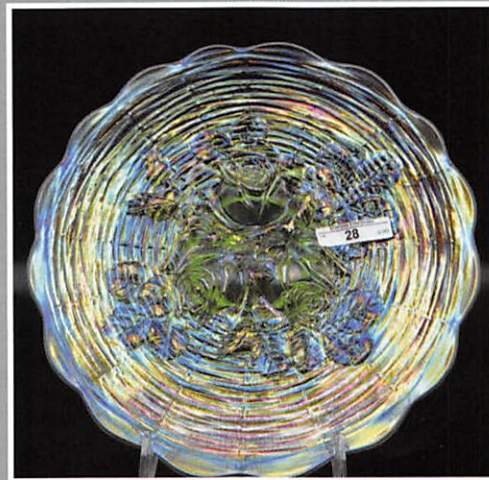
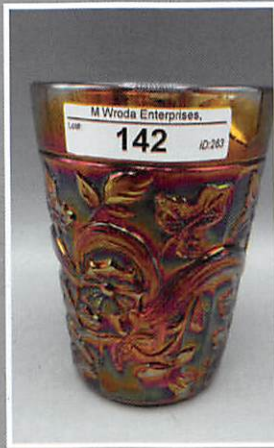
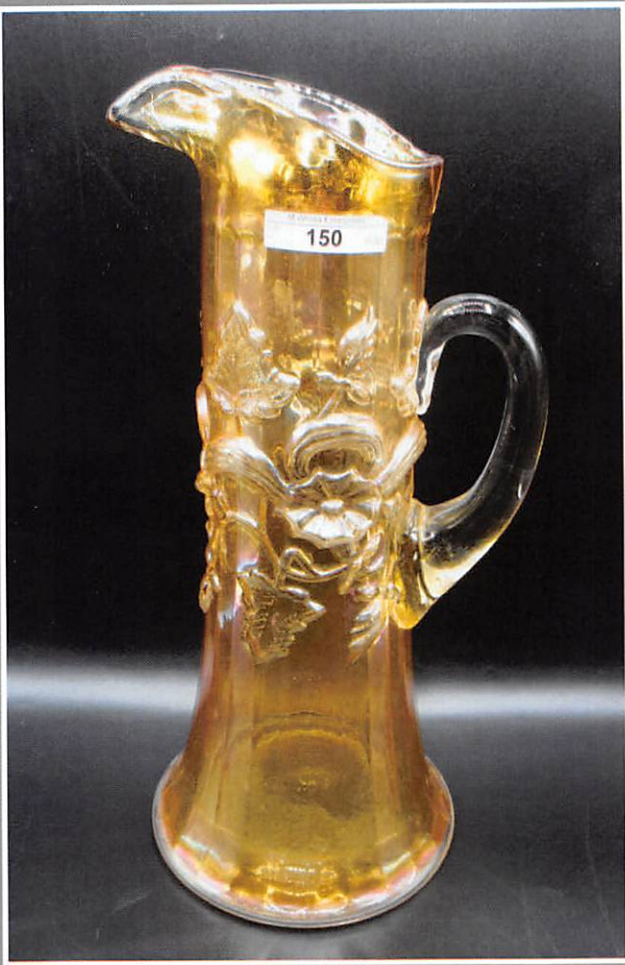


MATTHEW WRODA  
AUCTIONS

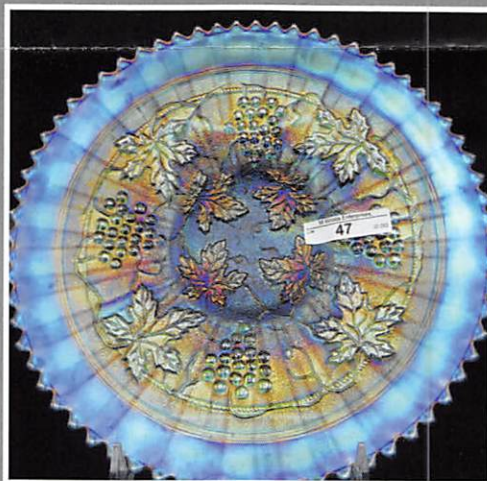
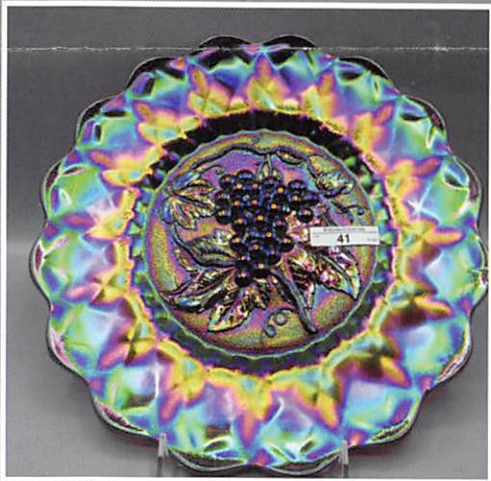














- 1 Nwood frosty white Raspberry 7pc water set VERY RARE SET
- 2 Nwood 9" elec purple Stippled Strawberry plate SUPER!
- 3 Nwood 8.5" blue Stippled Strawberry ruffled bowl Very nice- Leans Renninger
- 4 Nwood 8.5" blue Peacocks PCE bowl
- 5 Nwood Heart & Flowers compote, elec purple
- 6 Nwood Heart & Flowers compote, aqua opal
- 7 Nwood Heart & Flowers compote, bright marigold
- 8 Nwood Heart & Flowers compote, blue
- 9 Nwood Heart & Flowers 9" plate, elec purple
- 10 Nwood Heart & Flowers 8.5" bowl, elec blue
- 11 Nwood Heart & Flowers 8.5" bowl, ice green
- 12 Nwood Heart & Flowers 8.5" bowl, ice blue- SUPER
- 13 Nwood 8.5" ice green Drapery vase
- 14 Nwood 9" pumpkin mari Tree Trunk vase
- 15 Nwood 10.5" green Tree Trunk vase
- 16 Nwood 12" green Tree Trunk mid-size vase
- 17 Nwood 10" blue Tree Trunk vase
- 18 Dugan 10" elec purple Lined Lattice vase
- 19 Dugan 10" celeste blue Big Basketweave vase- RARE
- 20 Dugan 11" elec purple Big Basketweave vase
- 21 Nwood 11" green Thin Rib vase
- 22 Imp elec purple Loganberry vase- SUPER!!
- 23 Imp green Loganberry vase - scarce
- 24 Imp pastel mari Loganberry vase - scarce
- 25 Imp pumpkin mari Loganberry vase
- 26 Imp smoke Loganberry vase, great color
- 27 Nwood 9" white Rose Show plate
- 28 Nwood 9" ice green Rose Show plate
- 29 Nwood 9" elec purple Rose Show plate
- 30 Nwood 9" elec blue Rose Show plate
- 31 Nwood mari Ivy Town Pump- RARE
- 32 Nwood purple Ivy Town Pump
- 33 Nwood green Grape & Cable hatpin holder- Pretty
- 34 Nwood elec green corn vase w/ stalk base.
- 35 Nwood 7" ice blue Tree Trunk- Scarce
- 36 Nwood 7" ice green Tree Trunk- Scarce
- 37 Nwood 7" dark green Tree Trunk
- 38 Nwood 7" mari Tree Trunk
- 39 Imp elec purple Homestead chop plate- STUNNER! Signed NuArt
- 40 Imperial Grape elec purple 8pc wine set.
- 41 Imperial Heavy Grape elec purple chop plate. WOW!
- 42 Imperial 9" elec purple Scroll Embossed plate
- 43 Fenton 7" Three Row ice green square hat
- 44 Fenton white Pond Lily bon bon
- 45 Nwood white Grape & Cable bon bon
- 46 Nwood frosty white Memphis 8pc fruit set. Very pretty color
- 47 Nwood 9" sapphire Grape & Cable stippled plate, RARE
- 48 Nwood 9" pastel aqua opal Grape & Cable PCE bowl
- 49 Cambridge green Inverted Strawberry spittoon.
- 50 West teal 270 compote
- 51 Fenton purple Wreath Roses 8pc punch set w/ vintage interior.
- 52 Fenton 11" vaseline Stag & Holly 3 ft'd ICS bowl
- 53 Imperial 8" mari Ripple vase
- 54 Imperial 11" dark mari Beaded Bullseye vase
- 55 Imperial green Flute 8 pc punch set.
- 56 Dugan BLASTING ELEC PURPLE Amaryllis plate. From the Szebin collection. UNREAL!!!
- 57 Dugan 6" mari Fishscale & Beads bowl
- 58 Dugan elec purple Christmas compote. Scarce and pretty!
- 59 Dugan 8.5" mari Pony bowl
- 60 Dugan 8.5" It amy/ lav Pony bowl
- 61 Dugan 8.5" ice green Pony 10 ruffled bowl
- 62 Dugan 9" mari Brooklyn Bridge 10 ruffled bowl
- 63 Fenton 6" dark red Open Edge 2 sides up hat
- 64 Fenton 5.5" mari Open Edge ruffled hat
- 65 Fenton 8.5" elec green Concord 3-1 edge bowl. WOW!
- 66 Fenton 7" purple Peacock Tail ruffled bowl
- 67 Fenton green Wreath Roses compote
- 68 Nwood 8.5" elec purple Grape & Cable ruffled bowl w/ plain back
- 69 Nwood 8.5" green Good Luck bowl w/ BW back BRIGHT COLOR
- 70 Nwood purple Peacock at Fountain 7pc water set.
- 71 Nwood 9" elec blue 3 Fruits stippled plate- This is a great plate!
- 72 Nwood 8" green Star of David & Bows dome ft'd bowl
- 73 Nwood purple Acorn Burr 7pc water set.
- 74 Nwood 9" purple Stippled Rays ruffled bowl Silvery
- 75 Nwood green Wide Panel epergne. Scarce No issues.
- 76 Nwood GREEN Memphis 8pc punch set. DARK base color
- 77 Mburg 9" green Nesting Swans ruffled bowl
- 78 Mburg 9" green Blackberry Wreath 3-1 edge bowl
- 79 Mburg 6" purple Isaac Benesch ruffled bowl
- 80 Mburg BRIGHT GREEN Seacoast pin tray. This might just be the finest example of a green pin tray out there. It is WONDERFUL!
- 81 Mburg 8" green Trout & Fly diamond shape bowl.
- 82 Fenton 9" RED RED RED Dragon & Lotus bowl This looks red from across the room... WOW!
- 83 Fenton 9" blue Feather Stitch ICS bowl
- 84 Fenton 9.5" mari Cherry Chain ICS bowl
- 85 Fenton 8.5" purple Holly 3-1 edge bowl
- 86 Fenton 8.5" green Thistle bowl
- 87 Fenton 9" mari Peacock & Grape 8 ruffled bowl
- 88 Fenton 7" green Vintage ICS bowl
- 89 Dugan 9" PO Round Up low ruffled bowl
- 90 Melon Beaded Hatpin
- 91 Crown Crystal Australian 5" Thunderbird BA sauce
- 92 Fenton 9" RED Fine Rib vase
- 93 Fenton 22 3/4" green Rustic banded Funeral vase Great color!! One of the TALLEST we have seen at a whooping 22 3/4"!!
- 94 Fenton 19" purple Rustic Funeral vase. BRIGHT!
- 95 Fenton 18.5" marigold Rustic Funeral vase- DARK!!
- 96 Nwood elec purple Acorn Burr 8 pc punch set. Cups are not elec. Bowl and base are wonderful



- 97 Nwood frosty white Acorn Burr 8 pc punch set- Scarce,
- 98 Nwood frosty ice blue Acorn Burr 8pc punch set RARE AND WELL MATCHED!
- 99 Nwood frosty ice green Acorn Burr 8pc punch set RARE AND WELL MATCHED!
- 100 Nwood green Acorn Burr 8pc punch set. Scarce Always a desirable set
- 101 Fenton 7.5" elec blue 1914 Parkersburg Elks plate. SUPER
- 102 Fenton 9" mari Sectors Heart & Vine plate. DARK
- 103 Millersburg green Mitered Oval vase. Very RARE vase w/ nice color!
- 104 Millersburg marigold Acorn ruffled compote w/ tulip base. RARE
- 105 Millersburg 6" lite marigold Flute jelly compote w/ tulip base ( Blank for the Acorn & Wild Flower compotes)
- 106 Millersburg 8" marigold Trout & Fly square bowl
- 107 Millersburg 10" marigold Zig Zag bowl
- 108 Millersburg vaseline Fleur De Lys 10" ICS bowl. This bowl looks marigold but glows like crazy. not a want to be. Odd. You look at it and make up your mind.
- 109 Millersburg purple Perfection water pitcher. RARE
- 110 Millersburg GREEN Hanging Cherries milk pitcher RARE
- 111 Millersburg MARIGOLD Hanging Cherries milk pitcher SCARCE
- 112 Millersburg PURPLE Hanging Cherries milk pitcher SCARCE
- 113 Millersburg radium purple TALL Flute/ Tulip jelly compote. WOW WOW WOW!!
- 114 Millersburg purple Rosalind variant ruffled compote. Scarce
- 115 Millersburg marigold Deep Grape SQUARE compote RARE compote!
- 116 Millersburg GREEN Deep Grape SQUARE compote RARE compote!
- 117 Millersburg 6" GREEN Seaweed ruffled bowl- Rare
- 118 Millersburg 6" GREEN Peacock at Urn 3-1 edge bowl. RARE SHAPE FOR THIS! No beads No Bee
- 119 Millersburg 6" purple Little Stars ruffled bowl- RARE
- 120 Millersburg 7" purple Little Stars ruffled bowl-
- 121 Millersburg 7" marigold Little Stars ruffled bowl-
- 122 Millersburg 7.5" purple Little Stars ruffled ICS bowl
- 123 Millersburg 8.5" radium mari Little Stars ICS bowl RARE SIZE AND SHAPE
- 124 Millersburg 8.5" radium purple UNLETTERED Courthouse 3-1 edge bowl. Excellent pressing! RARE!!
- 125 Millersburg 8" radium purple Courthouse ruffled bowl
- 126 Millersburg 10" green Many Stars ICS bowl- Scarce
- 127 Millersburg 10" BLUE Hanging Cherries ICS bowl VERY RARE BOWL and it looks BLUE!!!
- 128 Millersburg 10" BLUE Blackberry Wreath ICS bowl. Scarce bowl and pretty for this! Again- Looks blue!
- 129 Millersburg purple Giant Peacock at Urn compote w/ tulip base. - Scarce
- 130 Millersburg GREEN Giant Peacock at Urn compote w/ tulip base. - Scarce
- 131 Millersburg purple Hobstar & Feather giant rosebowl. Scarce
- 132 Millersburg 9.5" purple Hobnail Swirl vase.
- 133 Millersburg 8" green Tulip vase. Scarce
- 134 Millersburg PURPLE Night Stars card tray RARE COLOR
- 135 Millersburg 6" purple Peacock at Urn plate
- 136 Millersburg 10" green Hanging Cherries 3-1 edge bowl
- 137 Millersburg 9" green Blackberry Wreath 3-1 edge bowl
- 138 Millersburg 9.5" green Rays & Ribbons flared bowl
- 139 Millersburg 10" green Holly Whirl bowl
- 140 Millersburg GREEN Multi-Fruits & Flowers punch cup
- 141 Millersburg green Hobstar & Feather punch cup. Hardest color to find.
- 142 Millersburg purple Morning Glory Tumbler
- 143 Millersburg marigold Gay Nineties tumbler
- 144 Millersburg purple Perfection tumbler
- 145 Millersburg green Perfection tumbler
- 146 Millersburg marigold Perfection tumbler
- 147 Millersburg green Feather & Heart tumbler
- 148 Millersburg purple Rose Columns vase- RARE Nice color
- 149 Millersburg 9" radium green Trout & Fly 3-1 edge bowl. RARE to find this in radium
- 149a STUNNING Nwood ICE BLUE Grape & Cable mid-size 10 pc punch set. OUTSTANDING Pastel irid on this wonderful set. This is one of the nicest pieces of Northwood ice blue you will see. BUY IT!!!
- 3 Nwood ice blue punch cups 1 money
- 149b
- 150 Millersburg pastel marigold MORNING GLORY tankard. BEAUTIFUL multi-color irid. A SWEETHEART of a tankard!
- 151 Nwood AO round Bushel Basket
- 152 Nwood AO Daisy & Drape flared vase
- 153 Nwood pastel AO Poppy pickle dish
- 154 Nwood powder blue opal. Daisy & Plume rosebowl. Very Rare. Feet & toes look ok. Very pastel piece!
- 155 Nwood AO Leaf & Beads rosebowl
- 156 Nwood AO Drapery rosebowl
- 157 Nwood AO Beaded Cable rosebowl
- 158 Nwood AO Fine Cut & Roses rosebowl w/Fancy int. Tiny flick on one toe
- 159 Nwood AO Singing Bird mug
- 160 Nwood AO G & C punch cup
- 161 Nwood AO Dandelion mug. Very light opal. Some may consider this just opal
- 162 Terry Crider AO Jewel & Flower tumbler
- 163 Terry Crider AO Interior Panels tumbler
- 164 Terry Crider AO Wreathed Cherry tumbler
- 165 Terry Crider AO Dahlia tumbler
- 166 Nwood 8.25" AO Drapery vase, leans butterscotch. Small chip on bottom of toe
- 167 Nwood 9" AO G & C stippled PCE bowl
- 168 Nwood 9" pastel AO Rose Show bowl
- 169 Nwood 9" pastel AO Three Fruits stippled plate
- 170 Nwood 9" AO Peacocks ruffled bowl



- 171 Nwood 10.5" AO Diamond Point vase
- 172 Nwood 10.5" AO Four Pillars vase
- 173 Nwood 11" AO Tree Trunk vase
- 174 Nwood 9.75" ice green Tree Trunk vase
- 175 Nwood 11.25" ice blue Tree Trunk vase
- 176 Nwood 9.5" frosty white Tree Trunk vase
- 177 Nwood 9.5" sapphire Tree Trunk vase
- 178 Nwood 9.5" blue Tree Trunk vase
- 179 Nwood 10.25" purple Tree Trunk vase
- 180 Nwood 6.5" green Tree Trunk squatty vase
- 181 Imp. 5.25" elec. purple Thumbprint & Oval ruffled vase
- 182 Imp. 5.25" dark mari. Thumbprint & Oval ruffled vase
- 183 Imp. 3 7/8" elec. purple miniature Morning Glory vase. Super cute!
- 184 Imp. 6.25" elec. purple Morning Glory vase
- 185 Imp. 4.25" green miniature Morning Glory vase
- 186 Imp. 7" olive green Morning Glory vase
- 187 Imp. 4" mari. Morning Glory miniature vase
- 188 Imp. 5.5" smoke Morning Glory vase w/4.25" opening
- 189 Imp. 5.5" teal Morning Glory vase
- 190 Imp. 5.75" dark mari. Morning Glory vase
- 191 Imp. 6.75" smokey amber Morning Glory vase
- 192 Imp. 6.5" pastel mari. Morning Glory vase w/4" opening
- 193 Imp. 6.5" green Morning Glory vase
- 194 Imp. 8" white Morning Glory vase
- 195 Imp. 8.25" ice lavender Morning Glory vase
- 196 Imp. 8" ebony Morning Glory vase
- 197 Imp. 4.75" mari. Corn bottle
- 198 Imp. 4.75" teal Corn bottle
- 199 Imp. 4.75" smoke Corn bottle
- 200 Imp. novelty barrel -light green
- 201 Imp. novelty barrel-smoke
- 202 Imp. novelty barrel-dark mari.
- 203 Imp. green Flue toothpick
- 204 pastel Novelty Swan-peach opal
- 205 pastel Novelty Swan-purple, epoxy repair on wing
- 206 pastel Novelty Swan-vaseline opal-not Carnival
- 207 pastel Novelty Swan-pink
- 208 pastel Novelty Swan-florentine green
- 209 pastel Novelty Swan-French opal-not Carnival
- 210 pastel Novelty Swan-celeste
- 211 pastel Novelty Swan-amber
- 212 Cont. honey amber Swan miniature oil lamp. Rare color!
- 213 Fenton 9.75" brilliant red Plume Panels vase Stunning!
- 214 Fenton 10" Cherry red Fine Rib vase
- 215 Fenton 9.25" cherry red Butterfly & Berry vase
- 216 Fenton 9.25" cherry red Flute vase
- 217 Fenton 11" brick red Knotted Beads CRE vase
- 218 Fenton 11" amethyst opal April Showers vase. Rare & extremely pretty!
- 219 Fenton 10"peach opal Rustic vase
- 220 Fenton 10" red Rustic CRE vase. Not Carnival
- 221 Fenton white Orange Tree loving cup
- 222 Fenton green Orange Tree loving cup. Rare
- 223 Fenton 10" vaseline Fine Rib vase
- 224 Fenton blue Orange Tree hatpin holder
- 225 Carnival Glass Hatpin-purple Six Plums
- 226 Carnival Glass Hatpin-black amy. Border Path
- 227 Carnival Glass Hatpin-Moire Beetle -black amy.
- 228 Carnival Glass Hatpin-Big Butterfly-black amy.
- 229 Carnival Glass Hatpin-Triad -black amy.
- 230 Carnival Glass Hatpin-black amy. Pinwheel
- 231 Carnival Glass Hatpin-celeste blue Rooster
- 232 Carnival Glass Hatpin-black. amy. Butlers Mirror
- 233 Carnival Glass Hatpin-black. amy. Tufted Throw Pillow
- 234 Carnival Glass Hatpin-black. amy. Flower Arc
- 235 Carnival Glass Hatpin-black. amy. Veiling
- 236 Carnival Glass Hatpin-black. amy. Dragonflies
- 237 Carnival Glass Hatpin-black. amy. Flower Arc
- 238 Carnival Glass Hatpin-crystal Bee on Honey comb Not irid.
- 239 Carnival Glass Hatpin-black amy. Top Of the Morning
- 240 Carnival Glass Hatpin-black amy. Flying Bat
- 241 Fenton 8" purple Thumbprint JIP vase. Scarce
- 242 Imp. elec. amber Loganberry vase
- 243 Dugan Daisy Web ruffled hat, Sweet!
- 244 Dugan 7" elec purple Grapevine Lattice low ruffled plate
- 245 Dugan blue Leaf Rays nappy- Scarce color
- 246 Dugan 5" peach opal Lined Lattice squatty vase Opal to the bottom!
- 247 Nwood purple Ivy Town Pump. Always on the list!
- 248 Imperial 5" purple Colonial Lady square top vase
- 249 Fenton 6.5" purple Boggy Bayou vase
- 250 Pair of Marigold Crucifix candlesticks- Very rare to find a pair!
- 251 Nwood 9" PURPLE Stippled Good Luck plate. VERY RARE PLATE!
- 252 Nwood purple Wishbone single lily epergne. tiny tiny flick on bottom of lily. No Harm.
- 253 Nwood elec purple Dandelion 7pc tankard set. WOW!!
- 254 Nwood 9" purple Nippon plate. Scarce
- 255 Nwood 9" blue Poppy Show plate. Always a hit!
- 256 Nwood 9" elec blue Rose Show plate. Scarce, good lookin plate!
- 257 Nwood green Tornado large vase. Tiny flake on base
- 258 Imperial 4.75" Ripple miniature vase
- 259 Imperial 5.25" Ripple miniature vase
- 260 Imperial 8" aqua Ripple vase
- 261 Imperial 8.25" BLUE Ripple vase- Not irid RARE!
- 262 Imperial 6" elec purple Ripple vase
- 263 Imperial 6" green Ripple vase w/ side spout- Cool!
- 264 Imperial 8.5" green Ripple vase
- 265 Imperial 9.5" white Ripple vase
- 266 Imperial 5.25" marigold Thin Rib & Drape vase
- 267 Imperial 6" elec purple Thin Rib & Drape vase RARE
- 268 Dugan 5" purple Pulled Loops flared vase
- 269 Dugan 8" elec purple Argonaut shell vase
- 270 Dugan 7" elec purple Circle Scroll vase - WOW!
- 271 Dugan 8" purple Lattice & Points vase
- 272 Dugan 11" purple Big Basketweave vase
- 273 Dugan 9.5" peach opal Target vase. very milky opal!
- 274 Nwood green G/C pin tray from punch cup



- 275 Nwood 8.75" blue Drapery Variant vase
- 276 Nwood 10.25" blue Thin Rib vase
- 277 Nwood white raspberry milk pitcher
- 278 Nwood 13" green Tree Trunk mid size vase
- 279 Contemporary Hobnail oil lamp
- 280 Imperial 9" smoke Shell plate- Very pastel!
- 281 US Glass 6.25" white Palm Beach vase
- 282 Eda Kulor 6" marigold vase.
- 283 Eda Kulor 6" blue vase. Scarce
- 284 Imperial smoke Roccoco vase
- 285 Imperial marigold Roccoco vase
- 286 Cambridge green small Buzz Star cruet w/ stopper.
- 287 Fenton 17" green Rustic funeral vase, Scarce color
- 288 Fenton 18.5" purple Rustic funeral vase Scarce
- 289 Fenton 17" frosty white Rustic Funeral vase. Hard to find vase.
- 290 Fenton 19" marigold Rustic funeral vase. Always sought after.
- 291 Fenton 18" elec blue Rustic funeral vase. Bright yellow irid. A very nice vase!
- 292 Imperial 13.75" elec purple Ripple funeral vase w 4.75" base- HOT LOT!!
- 293 Imperial 14" elec amber Ripple funeral vase w 4.75" base- HOT LOT!!
- 294 Imperial 18.5" green Ripple funeral vase 4.75" base
- 295 Imperial 12" marigold Ripple funeral vase w/ 4.75" base
- 296 Imperial (IG) 12" pink Ripple vase Only made 1 day of production. Contemporary
- 297 Imperial Morning Glory funeral vase - 15.5" charcoal smoke Really odd but beautiful color for this. Star base. RARE.
- 298 Imperial Morning Glory funeral vase - 16" green w/ star base
- 299 Imperial Morning Glory funeral vase - 16" elec purple w/ snowflake base. Good looking vase! great flare
- 300 Imperial Morning Glory funeral vase - 16" marigold w/ star base. Dark color for this.
- 301 Mburg green Sunflower pin tray
- 302 Mburg purple Seacoast pin tray - scarce
- 303 Mburg marigold Hobnail Swirl rosebowl
- 304 Mburg 7.5" purple Tulip Scroll vase
- 305 Mburg 7" purple Bullseye & Loop vase
- 306 Mburg 10.5" lt amy. Hobnail Swirl vase. pushing lavender
- 307 Mburg 10" green Hobnail Swirl vase.
- 308 Mburg 10.5" marigold Hobnail Swirl vase.
- 309 Mburg 10.5" purple Hobnail Swirl vase.
- 310 Imperial 10.5" lavender Ripple vase
- 311 Imperial 11" helios green Ripple vase
- 312 Imperial 12" powder blue opal Ripple vase not CG. Super strong controlled color! This is a great vase
- 313 Imperial 11" elec purple Ripple vase
- 314 Imperial 10.5" VIOLET BLUE Ripple vase. RARE! Great color
- 315 Imperial 9" BLUE Ripple vase- VERY RARE
- 316 Imperial 8" amber Ripple vase w/ side spout at 7:00. Cool vase
- 317 Imperial 10.5" powder blue Ripple vase
- 318 Imperial 10" olive green Ripple vase Scarce
- 319 Imperial 9" smoke Ripple vase
- 320 Imperial 10.25" lime green Ripple mid size vase Cool color of green for this.
- 321 Imperial 8.75" purple Beaded Bullseye vase. Good color!
- 322 Nwood purple Peacock at Fountain 8pc punch set. Scarce set
- 323 4 Nwood purple Peacock at Fountain punch cups
- 324 Australian Crown Crystal 5" black amy sauce- Swan
- 325 Australian Crown Crystal 5" black amy sauce- Maggie
- 326 Australian Crown Crystal 5" black amy sauce- Kookaburro
- 327 Australian Crown Crystal 5" black amy sauce- King Fisher
- 328 Australian Crown Crystal 5" black amy sauce- Emu
- 329 Australian Crown Crystal 5" black amy sauce- Thunderbird / Shrike
- 330 Mburg 10" radium purple Strawberry Wreath tri corner bowl w/ CRE. Very nice bowl!
- 331 Dugan 10" purple Ski Star ruffled bowl. Bright color!
- 332 Fenton 9" blue Persian Medallion plate
- 333 Fenton 9" dark marigold Captive Rose plate
- 334 Fenton 9" blue Holly plate.
- 335 Fenton 9" blue Peacock at Urn plate.
- 336 Fenton 9" marigold Heart & Vine Plate w/ Compliments of Spector Department Store
- 337 Fenton 9" blue Ribbon Tie 3-1 edge low bowl
- 338 Fenton 9" aqua opal Dragon & Lotus 8 ruffled bowl RARE. A VERY FINE example
- 339 Fenton 8.5" RED Dragon & Lotus ICS bowl AWESOME COLOR!
- 340 Fenton 9" marigold on moonstone Holly 8 ruffled bowl. Scarce color
- 341 Fenton 9" Amberina Holly ruffled bowl. Dark Amber base with red edge.
- 342 Fenton 7.5" blue 1911 Elks Atlantic City plate. Scarce
- 343 Fenton 10" green Dragon & Strawberry footed flared bowl. Outstanding pressing and color. YOU ARE GONNA LOVE THIS ONE!
- 344 Fenton blue 1911 Atlantic City Elks bell. Handle and been broken and repaired. Does have the Fenton Museum numbers underneath. Good enough for the museum good enough for me!!

















MATTHEW WRODA  
AUCTIONS

58 East Main Street  
Westfield, NY 14787

PRESORTED  
FIRST CLASS MAIL  
U.S. POSTAGE  
**PAID**  
CELINA, OH  
PERMIT NO. 99

