

The Willie Jean &  
Clarence Cheek Collection

International Carnival Glass Association

# Carnival Glass 2021 Auction

Saturday, July 10  
9:30 a.m.

Essenhaus Inn & Conference Center  
Middlebury, Ind. 45540



Public Invited



33



57

10

184

127

296

204

Seeck Auctions

Jim & Jan Seeck  
641-424-1116



Jim & Jan Seeck

# ICGA Convention Auction

641-424-1116

9:30 a.m. Saturday, July 10, 2021

Essenhaus Inn & Conference Center 240 Highway 20 Middlebury, In.

◆ **ABSENTEE and LIVE BIDDING** is available online through Auction Flex at: [www.seeckauction.com](http://www.seeckauction.com)

◆ **NO BUYER'S PREMIUM** — EMAIL: [jimjan@seeckauction.com](mailto:jimjan@seeckauction.com)

## The Willie Jean and Clarence Cheek Collection

Indiana Auction License #AU09100184

We are pleased to be selling the Willie Jean and Clarence Cheek estate of Carnival Glass at the ICGA convention this year in Middlebury, IN. The Cheeks Carnival Glass collection was always the "must see" when traveling through North Carolina. They lived in a log cabin that Clarence had built and had punch sets from floor to ceiling. Their auction consists of many

punch sets with many being extremely rare and hard to find.

We will also be having an Online Only Auction on Thursday evening at the convention starting at 7 pm. This auction will consist of contemporary Carnival Glass and some art glass pieces.

Visit the ICGA Website: <http://www.internationalcarnivalglass.com>

If planning to stay at the hotel, reservations can be made by calling (574)825-9471.

If you have questions about the convention, contact President Brian Pitman at: 785-274-9105 or email: [bpitman@gmail.com](mailto:bpitman@gmail.com)

### ABSENTEE BIDDING OPTIONS

**Terms:** Cash or Check, VISA, MasterCard and Discover accepted w/proper ID. **4% Clerking Fee** on all purchases made using credit cards. Announcements made day of sale take precedence over any printed information.

1) **Call us by phone at:** (641) 424-1116

2) **Prebid:** Enter your bids from our website into our online catalog through the Auction Flex system.

*An exciting advantage of entering your bids online yourself*, is the option to be notified by email if you are outbid on an item. You will know when you are outbid on an item and you can increase your bid on that item or bid on something else.

3) **Live Phone Bidding:** Is available on pieces with an estimated sale price of \$500 or more. If you would like to participate in live phone bidding, contact us by **the Thursday before the auction.**

4) **Real-time Bidding:** Bid live during the auction through Auction Flex live webcast bidding.

**There is a \$7 handling charge for each successful bid. Shipping and insurance charges are additional.**

Bidders will be notified by phone/email if their bid(s) are successful. This will be done 1 - 3 days after the auction.

**BID INCREMENTS:**

\$1 - \$100/\$5	\$100 - \$200/\$10	\$200 - \$700/\$25	\$700 - \$1,500/\$50
\$1,500 - \$3,000/\$100	\$3,000 - \$5,000/\$250	\$5000+	Auctioneer's Discretion

- \_\_\_ 1. Drapery candy dish - lime green - nice
- \_\_\_ 2. Drapery candy dish - ice blue - nice
- \_\_\_ 3. Drapery candy dish - white - pretty
- \_\_\_ 4. Drapery candy dish - purple - pretty
- \_\_\_ 5. Drapery candy dish - marigold - nice
- \_\_\_ 6. Grape & Cable breakfast set - green - nice set
- \_\_\_ **7. Grape & Cable sweetmeat - marigold - scarce to find in marigold, very nice**
- \_\_\_ 8. Grape & Cable sweetmeat - lavender - very pretty, scarce color
- \_\_\_ 9. Grape & Cable sweetmeat - purple
- \_\_\_ **10. Acorn Burrs 8 pc. punch set - ice green - highly desirable and hard to find, great set!**
- \_\_\_ **11. Acorn Burrs 8 pc. punch set - ice blue - super pretty & very rare set, these pastel sets are extremely hard to find**
- \_\_\_ **12. Acorn Burrs 8 pc. punch set - white - rare set & nice, eraser size bruise in bottom of bowl**
- \_\_\_ 13. Acorn Burrs 9 pc. punch set - green - scarce, very nice
- \_\_\_ 14. Double Stemmed Rose dome ftd ruffled bowl- white - pretty, very small manufacture split on edge
- \_\_\_ 15. Way's Beaded Swirl rose bowl - marigold – rare rose bowl, few known
- \_\_\_ **16. Rose Show 9” plate - lime green - rare & nice**
- \_\_\_ **17. Rose Show 9” plate - ice blue - pretty, small buffed spot on rose**
- \_\_\_ **18. Rose Show 9” plate - emerald green - very nice for this rare color**
- \_\_\_ 19. Rose Show 9” plate - blue - very pretty, nick on base
- \_\_\_ **20. Rose Show 9” plate - marigold - dark, pretty**
- \_\_\_ 21. Orange Tree powder jar - amethyst - rare color, 2 pinpoint on bottom edge of lid
- \_\_\_ 22. Orange Tree powder jar - blue - minor internal bruise in base, lid is perfect
- \_\_\_ 23. Orange Tree powder jar - marigold - roughness on side of base
- \_\_\_ **24. Acorn Burrs 7 pc. water set - purple - very pretty for these**
- \_\_\_ 25. Stag & Holly lg ftd ruffled bowl – marigold
- \_\_\_ 26. N's Eight Sided bushel basket - ice blue - pretty example
- \_\_\_ 27. N's Eight Sided bushel basket – white - nice
- \_\_\_ 28. N's Eight Sided bushel basket - green - very nice
- \_\_\_ 29. N's Eight Sided bushel basket - blue - super pretty
- \_\_\_ 30. N's Eight Sided bushel basket - marigold
- \_\_\_ 31. Captive Rose ruffled bowl - marigold
- \_\_\_ 32. Columbia 6” vase - marigold - ruffled top
- \_\_\_ **33. S-Repeat 8 pc. punch set - purple - super rare set & nice**
- \_\_\_ 34. Holly JIP CRE hat shape - marigold - chip on edge
- \_\_\_ 35. Good Luck ruffled bowl w/ribbed back – sapphire - pretty, chip on point
- \_\_\_ **36. Good Luck ruffled bowl w/ribbed back - aqua opal - butterscotch, very nice**
- \_\_\_ 37. Good Luck ruffled bowl w/ribbed back - blue - nice
- \_\_\_ 38. Good Luck ruffled bowl w/BW back - green - nice
- \_\_\_ 39. Good Luck ruffled bowl w/BW back - purple - nice
- \_\_\_ 40. Grape & Cable bonbon - green
- \_\_\_ 41. Grape & Cable bonbon - marigold
- \_\_\_ 42. Pair of Persian Medallion round saucers - green
- \_\_\_ 43. Wild Rose Open Edge ftd nut bowl - marigold - this has the Variant interior
- \_\_\_ 44. Stippled & Banded Grape & Cable banana boat - light aqua - super pretty irid. on this very rare piece, one foot has internal crack
- \_\_\_ 45. Daisy & Plume stemmed compotes - amethyst, green & marigold
- \_\_\_ 46. Stippled Three Fruits 9” plate w/ribbed back - blue - nice
- \_\_\_ 47. Lot of 3 MaryAnn vases - amethyst has chip on base
- \_\_\_ **48. Banded Grape & Cable hatpin holder - blue - extremely rare color, very few around, feet have restoration**
- \_\_\_ 49. Grape & Cable hatpin holder - green - very nice
- \_\_\_ 50. Grape & Cable hatpin holder - purple - pretty
- \_\_\_ 51. Waterlily ftd ruffled sauce - lime green opal
- \_\_\_ 52. Waterlily ftd ruffled sauce - lime green
- \_\_\_ 53. Waterlily ftd ruffled sauce - blue
- \_\_\_ 54. Waterlily ftd ruffled sauce - marigold
- \_\_\_ **55. Grape & Cable small size 8 pc. punch set - ice blue - a rare, rare set, super pretty! base color leans towards aqua**
- \_\_\_ **56. Grape & Cable small size 5 pc. punch set - ice green - another super rare set, three points broken off bowl**
- \_\_\_ **57. Grape & Cable small size 8 pc. punch set - white - super pretty set, outstanding!**
- \_\_\_ **58. Grape & Cable small size punch bowl & base - green - roughness between two points on bowl**
- \_\_\_ **59. Grape & Cable small size 8 pc. punch set – purple - pretty set**
- \_\_\_ 60. Beaded Cable rose bowl - aqua opal
- \_\_\_ 61. Beaded Cable rose bowl – green - pinpoint on one foot
- \_\_\_ 62. Beaded Cable rose bowl - purple
- \_\_\_ 63. Brocaded Acorns large centerpiece bowl - ice blue

- \_\_\_ 64. Cherry Chain 10" ruffled bowl - marigold - very pretty
- \_\_\_ 65. Holly ruffled bowl - blue
- \_\_\_ 66. Holly ruffled bowl - marigold
- \_\_\_ 67. Birds & Cherries bonbon - green
- \_\_\_ **68. Grape & Cable 7 pc. water set - purple - pitcher is very pretty**
- \_\_\_ 69. Grape & Cable 7 pc. water set - marigold - pretty set
- \_\_\_ 70. Drapery Variant 8 1/2" vase - blue - nice
- \_\_\_ 71. Drapery Variant 8 1/2" vase - marigold
- \_\_\_ 72. Grape & Cable Variant 9" plate w/BW back - purple - pretty
- \_\_\_ 73. M'burg Boutonniere ruffled compote - amethyst - radium
- \_\_\_ 74. Heavy Grape 8 1/2" plate - amber - this is stretched a little larger than normal
- \_\_\_ 75. Heavy Grape 8" plate - purple
- \_\_\_ 76. Peacock Tail bonbon & compote - amethyst
- \_\_\_ **77. Many Fruits 8 pc. ruffled punch set - white - very rare set & nice, one cup is crack, two cups are slightly sun colored**
- \_\_\_ 78. Many Fruits 8 pc. punch set - purple - another scarce set, nick on inner rim of bowl, base is pretty
- \_\_\_ **79. Dandelion Knight's Templar mug - ice green - very pretty for these**
- \_\_\_ 80. Dandelion mug - aqua opal - very pretty
- \_\_\_ 81. Dandelion mug - aqua opal - butterscotch & beautiful
- \_\_\_ 82. Dandelion mug - purple - scarce, nice
- \_\_\_ 83. Dandelion mug - marigold - nice
- \_\_\_ 84. Imperial Grape ruffled bowl - amber
- \_\_\_ 85. Daisy Wreath ruffled bowl - blue opal - nice
- \_\_\_ **86. Wreathed Cherry banana boat - peach opal - scarce color**
- \_\_\_ 87. Leaf & Beads rose bowl w/Sunflower interior - green - very pretty
- \_\_\_ 88. Leaf & Beads rose bowl w/Sunflower interior - marigold - very pretty
- \_\_\_ 89. Leaf & Beads rose bowl - aqua opal - butterscotch
- \_\_\_ 90. Leaf & Beads rose bowl - blue
- \_\_\_ 91. Leaf & Beads rose bowl - purple
- \_\_\_ 92. Leaf & Beads rose bowl w/Rays interior - marigold
- \_\_\_ **93. Stippled Grape & Cable 8 pc. punch set - blue - very rare set & nice!**
- \_\_\_ **94. Stippled Grape & Cable 8 pc. punch set - green - very rare color, hardly ever sold**
- \_\_\_ **95. Stippled Grape & Cable 8 pc. punch set - marigold - another very rare set & very pretty**
- \_\_\_ 96. Beaded Bullseye 10 1/2" vase - purple - super pretty
- \_\_\_ 97. Beaded Bullseye 12 1/2" vase - marigold
- \_\_\_ 98. Grape & Cable butter dish - green
- \_\_\_ 99. Grape & Cable butter dish - purple
- \_\_\_ 100. Fruits & Flowers bonbon - green
- \_\_\_ 101. Fruits & Flowers bonbon - purple
- \_\_\_ **102. N's Peacock at the Fountain water pitcher - ice blue - rare & nice**
- \_\_\_ 103. N's Peacock at the Fountain 7 pc. water set - marigold - nice set
- \_\_\_ 104. Grape Delight rose bowl - blue
- \_\_\_ 105. Grape Delight rose bowl - white
- \_\_\_ 106. Grape Delight rose bowl - purple
- \_\_\_ 107. Heavy Grape ruffled bowl - purple
- \_\_\_ **108. Broken Arches 8 pc. punch set - purple - very small pinpoint on the saw tooth of base, otherwise beautiful, one cup chipped**
- \_\_\_ 109. N's Bushel Basket - aqua opal - pastel, pretty
- \_\_\_ 110. N's Bushel Basket - lime green - super, scarce color
- \_\_\_ 111. N's Bushel Basket - ice green
- \_\_\_ 112. N's Bushel Basket - white
- \_\_\_ 113. N's Bushel Basket - green
- \_\_\_ 114. N's Bushel Basket - smoke - nice
- \_\_\_ 115. N's Bushel Basket - blue - very pretty
- \_\_\_ 116. N's Bushel Basket - purple
- \_\_\_ 117. N's Bushel Basket - marigold
- \_\_\_ 118. N's Bushel Basket - pastel marigold - nice
- \_\_\_ **119. Singing Birds 7 pc. water set - green - scarce, nice**
- \_\_\_ 120. Grape & Cable PCE bowl w/BW back - marigold
- \_\_\_ 121. Wishbone ftd ruffled bowl - green - super pretty
- \_\_\_ 122. Wishbone ftd ruffled bowl - marigold
- \_\_\_ 123. Blackberry Spray 2 sides up hat shape - green - pretty irid.
- \_\_\_ 124. Miniature Morning Glory 5" vase - purple
- \_\_\_ **125. Grape & Cable master punch bowl & base - ice green - base is perfect, bowl is badly damaged, this is an extremely rare item, great shelf piece**

- \_\_\_ 126. **Grape & Cable 13 pc. master punch set - ice blue - another extremely rare punch set, very few known, several points have been damaged and partially repaired**
- \_\_\_ 127. **Grape & Cable 10 pc. master punch set – white - super nice set, very hard to find, beautiful**
- \_\_\_ 128. **Grape & Cable 13 pc. master punch set - green - super pretty irid. on this set, a beauty**
- \_\_\_ 129. **Grape & Cable 13 pc. master punch set - blue - super hard color to get & very nice**
- \_\_\_ 130. **Grape & Cable 14 pc. master punch set - purple - rare set, inside of punch bowl is super**
- \_\_\_ 131. **Grape & Cable 13 pc. punch set - marigold - dark & nice**
- \_\_\_ 132. **Grape & Cable master punch bowl & base - pastel marigold - beautiful, has a large bruise in collar base of bowl**
- \_\_\_ 133. **Fine Cut & Roses rose bowl - aqua opal - Fancy interior, butterscotch & pretty, feet have epoxy**
- \_\_\_ 134. **Pair of Fine Cut & Roses rose bowls - ice blue - Fancy interiors, typical nicks on feet of both**
- \_\_\_ 135. **Fine Cut & Roses rose bowl - lavender - super pretty, has Fancy interior**
- \_\_\_ 136. **Fine Cut & Roses rose bowl – purple - plain interior**
- \_\_\_ 137. **Fine Cut & Roses rose bowl - amethyst - plain interior**
- \_\_\_ 138. **Fine Cut & Roses rose bowl - marigold - plain interior**
- \_\_\_ 139. **Fine Cut & Roses rose bowl w/no collar base - purple - plain interior**
- \_\_\_ 140. **Fishscale & Beads 6” plate - marigold - pastel & pretty**
- \_\_\_ 141. **Wild Rose Open Edge ftd nut bowl - green - Stippled Rays interior**
- \_\_\_ 142. **Daisy & Drape flared out vase - aqua opal - most people would call this sapphire opal, it has butterscotch irid. on the interior, very unique & beautiful**
- \_\_\_ 143. **Daisy & Drape flared out vase - aqua opal - pastel & nice**
- \_\_\_ 144. **Daisy & Drape flared out vase - aqua opal - butterscotch & nice**
- \_\_\_ 145. **Daisy & Drape flared out vase - blue - a beauty for these, scarce color**
- \_\_\_ 146. **Kittens toothpick - marigold**
- \_\_\_ 147. **Wild Strawberry 7” handgrip plate - green - nice**
- \_\_\_ 148. **Captive Rose ruffled compote - marigold - dark**
- \_\_\_ 149. **Imperial Grape 7 pc. punch set - purple - a super beautiful set! scarce**
- \_\_\_ 150. **Memphis master berry bowl - marigold**
- \_\_\_ 151. **Wishbone epergne base - white - if you have a lily, you need this!**
- \_\_\_ 152. **Wishbone epergne - purple - very pretty example, small chip on bottom of lily**
- \_\_\_ 153. **Wishbone epergne - marigold - nick on bottom of lily, tiny pinpoint on underside of top edge of lily**
- \_\_\_ 154. **Ripple 10 1/2” vase - purple - has 3 3/8” base**
- \_\_\_ 155. **Ripple 12” vase - green - has 3 3/8” base**
- \_\_\_ 156. **N’s Peacock at Urn master IC bowl - ice green - scarce**
- \_\_\_ 157. **Pair of N’s Peacock at Urn IC sauces - ice green - both light on irid.**
- \_\_\_ 158. **N’s Peacock at Urn master IC bowl - ice blue - pretty**
- \_\_\_ 159. **Pair of Knotted Beads 10” vases w/crimped tops - marigold**
- \_\_\_ 160. **Rustic 19” funeral vase - amethyst - scarce, pretty**
- \_\_\_ 161. **Rustic 18 1/2” funeral vase - blue - also very pretty**
- \_\_\_ 162. **Rustic 18 1/2” funeral vase - marigold - dark & pretty**
- \_\_\_ 163. **Holly IC shaped bowl - blue**
- \_\_\_ 164. **Rose Show ruffled bowl – green - pretty example, scarce color**
- \_\_\_ 165. **Rose Show ruffled bowl - aqua - rare color, pretty**
- \_\_\_ 166. **Rose Show ruffled bowl - aqua opal - pastel, pretty**
- \_\_\_ 167. **Rose Show ruffled bowl - purple - nice**
- \_\_\_ 168. **Beaded Bullseye 12” vase - purple**
- \_\_\_ 169. **Grape & Cable 14 pc. round master punch set - purple - extremely in the round shape, highly sought after**
- \_\_\_ 170. **Lot of 4 compotes**
- \_\_\_ 171. **Good Luck PCE bowl w/ribbed back - purple - nice**
- \_\_\_ 172. **Good Luck PCE bowl w/ribbed back - marigold**
- \_\_\_ 173. **Mikado ruffled compote - marigold**
- \_\_\_ 174. **Apple Blossom Twigs 9” plate - purple - one point is smooshed, manufacture**
- \_\_\_ 175. **Lattice & Poinsettia ftd ruffled bowl - ice blue - scarce, a beauty**
- \_\_\_ 176. **Zippered Loop 9 1/2” kerosene lamp - marigold - base is 5 3/4”**
- \_\_\_ 177. **Diamond Lace 7 pc. water set - purple - nice set**
- \_\_\_ 178. **Peacocks ruffled bowl w/ribbed back - aqua opal - pastel & pretty**
- \_\_\_ 179. **Peacocks ruffled bowl w/ribbed back - aqua opal - butterscotch & nice**
- \_\_\_ 180. **Peacocks ruffled bowl w/ribbed back - lime green - scarce color**
- \_\_\_ 181. **Peacocks ruffled bowl w/ribbed back - lavender**
- \_\_\_ 182. **Peacocks ruffled bowl w/ribbed back – marigold - very pretty**
- \_\_\_ 183. **Pair of rose bowls**
- \_\_\_ 184. **Memphis 8 pc. punch set - ice green - extremely rare color for this pattern, super!**
- \_\_\_ 185. **Memphis 8 pc. punch set – white - another rarity, very nice**
- \_\_\_ 186. **Memphis 8 pc. punch set – green - also hard to get**
- \_\_\_ 187. **Memphis 8 pc. punch set - purple - very pretty, couple of no harm nicks in pattern on bowl**

- \_\_\_ 188. Memphis 8 pc. punch set – marigold - nice
- \_\_\_ **189. Drapery 8” vase - aqua opal - pretty example & quite scarce**
- \_\_\_ 190. Drapery 8” vase - ice green
- \_\_\_ 191. Drapery 7” vase - marigold
- \_\_\_ 192. Palm Beach 4 pc. table set - white - very hard to find set, spooner has crack
- \_\_\_ 193. Three Fruits ruffled bowl w/plain back - marigold - pretty
- \_\_\_ 194. Imperial Grape 7 pc. water set - purple - pitcher is stunning
- \_\_\_ 195. Imperial Grape 4 pc. water set - marigold
- \_\_\_ 196. Grape & Cable whimsy compote - purple
- \_\_\_ 197. Poppy Show ruffled bowl - green - beautiful, couple spots of epoxy on back edge
- \_\_\_ **198. Poppy Show ruffled bowl - ice green - rare & desirable**
- \_\_\_ **199. Poppy Show ruffled bowl - ice blue - very pretty**
- \_\_\_ 200. Daisy & Plume ftd rose bowl - green - has Raspberry interior
- \_\_\_ 201. Daisy & Plume ftd rose bowl - marigold - has Raspberry interior, tiniest pinpoint on foot
- \_\_\_ 202. Four Pillars Variant 7 1/2” vase - blue
- \_\_\_ **203. Grape & Cable 11 pc. midsize punch set - ice green w/ lime green base & cups - extremely rare color, super nice**
- \_\_\_ **204. Grape & Cable 10 pc. midsize punch set - ice blue - extremely rare set & pretty**
- \_\_\_ **205. Grape & Cable 10 pc. midsize punch set – white - another very rare set, one cup has base chip**
- \_\_\_ **206. Grape & Cable 8 pc. midsize punch set – green - hard color to find, nice**
- \_\_\_ **207. Grape & Cable 9 pc. midsize punch set – blue - inside of bowl is super, another hard color to find, cups are stippled**
- \_\_\_ **208. Grape & Cable midsize punch bowl & base – blue - very rare to have 2 in one auction**
- \_\_\_ 209. Grape & Cable 8 pc. midsize punch set – horehound - base & cups are marigold, bowl has a couple of chips on points, rare color for the bowl
- \_\_\_ 210. Blackberry Spray JIP CRE hat shape - lime green
- \_\_\_ 211. Blackberry Spray JIP CRE hat shape - blue
- \_\_\_ **212. Butterfly & Tulip square shaped bowl - purple - butterfly is perfectly centered, really nice example**
- \_\_\_ 213. Vintage powder jar - marigold
- \_\_\_ **214. Poppy pickle dish - aqua opal - hard color to find**
- \_\_\_ **215. Poppy pickle dish - ice blue - nice**
- \_\_\_ 216. Poppy pickle dish - green - pretty
- \_\_\_ 217. Poppy pickle dish - purple - nice
- \_\_\_ 218. Poppy pickle dish - blue
- \_\_\_ 219. Poppy pickle dish - marigold - dark
- \_\_\_ 220. Poppy pickle dish - marigold - pastel
- \_\_\_ 221. Dragon & Lotus ruffled bowl - blue
- \_\_\_ 222. Pair of Dragon & Lotus ruffled bowls - marigold
- \_\_\_ 223. Captive Rose 3 in 1 edge bowl – blue - nice
- \_\_\_ **224. Tornado small size vase - marigold - nice**
- \_\_\_ **225. Grape & Cable 14 pc. master punch set - purple - super nice, bowl is beautiful**
- \_\_\_ 226. Grape & Cable spt ftd ruffled bowl - marigold
- \_\_\_ 227. N’s Thin Rib 9 1/2” vase - green - pretty
- \_\_\_ 228. N’s Thin Rib 9 1/2” vase - purple
- \_\_\_ 229. N’s Thin Rib 11” vase - russet
- \_\_\_ **230. Grape & Cable lg size ftd orange bowl - ice green - extremely rare color for these large bowls, highly desirable**
- \_\_\_ 231. Dahlia creamer & spooner - purple
- \_\_\_ 232. Drapery rose bowl - aqua opal - butterscotch, nice
- \_\_\_ 233. Stippled Good Luck ruffled bowl w/ribbed back - blue
- \_\_\_ 234. Bishop’s Mitre 7 1/2” vase – marigold - Riihimaki
- \_\_\_ 235. Raspberry 7 pc. water set - purple - pitcher is very nice
- \_\_\_ 236. Little Flowers 10” ruffled bowl - marigold
- \_\_\_ 237. Grape & Cable dresser tray - green - nice
- \_\_\_ 238. Peacocks 9” plate w/ribbed back – green - nice
- \_\_\_ 239. Fenton’s Grape & Cable ftd ruffled fruit bowl w/Persian Medallion interior - blue
- \_\_\_ **240. Daisy & Drape turned in vase - amethyst - nice**
- \_\_\_ 241. Daisy & Drape turned in vase - marigold - dark
- \_\_\_ 242. Daisy & Drape turned in vase - light marigold
- \_\_\_ 243. Daisy & Drape turned in vase - white - nice
- \_\_\_ **244. Wreath of Roses 5 pc. punch set – amethyst - punch bowl has plain interior, cups have Vintage interior, nice**
- \_\_\_ 245. Stag & Holly lg size ftd deep ruffled bowl - marigold
- \_\_\_ 246. Daisy & Plume ftd rose bowl w/Rayed interior - green
- \_\_\_ 247. Daisy & Plume ftd rose bowl w/Rayed interior - marigold
- \_\_\_ **248. Rose Show Variant ruffled bowl w/ribbed back - renninger blue - super pretty example**
- \_\_\_ 249. Apple Blossom Twigs low ruffled bowl - white - nice
- \_\_\_ 250. Tree Trunk 13” midsize vase - amethyst - beautiful irid.

- \_\_\_ 251. Tree Trunk 12 1/2" midsize vase - purple - nice
- \_\_\_ 252. Grape & Cable candle lamp - marigold - always desired
- \_\_\_ 253. Greek Key ruffled bowl w/BW back - purple
- \_\_\_ **254. Peach 7 pc. water set - white - very pretty, one tumbler has small chip on base**
- \_\_\_ 255. Dahlia butter dish - marigold - nice
- \_\_\_ 256. Three Fruits 9" plate w/BW back - purple
- \_\_\_ 257. Three Fruits 9" plate w/BW back - marigold
- \_\_\_ 258. Fenton's Fine Rib 12 1/2" vase - green - nice
- \_\_\_ **259. Poppy Show 9" plate - blue - has electric highlights, quite scarce**
- \_\_\_ **260. Poppy Show 9" plate - marigold - very pretty**
- \_\_\_ 261. Fenton's Peacock at Urn ruffled bowl - blue - nice
- \_\_\_ 262. Pair of Graceful tumblers - blue - Cristalerias Piccardo
- \_\_\_ 263. Grape & Cable master punch bowl base - green
- \_\_\_ 264. Ftd Prism Panels vase - marigold
- \_\_\_ **265. NUART Homestead chop plate - amber - super pretty plate, very rare, typical pinpoint on Greek Key rib**
- \_\_\_ **266. Homestead chop plate - purple - super pretty, scarce**
- \_\_\_ 267. Grape & Cable hatpin holder - purple
- \_\_\_ 268. N's Fine Rib 10" vase - purple
- \_\_\_ 269. Grape & Cable ruffled bowl w/BW back - purple
- \_\_\_ **270. M'burg Hobstar & Feather 5 pc. punch set - marigold - very rare set, nice**
- \_\_\_ 271. N's Bushel basket - aqua opal - butterscotch, nice
- \_\_\_ 272. N's Bushel basket - green
- \_\_\_ 273. N's Bushel basket - blue
- \_\_\_ 274. N's Bushel basket - purple
- \_\_\_ **275. Grape & Cable sweetmeat - marigold - nice example, your second chance, rare to have 2 in one auction**
- \_\_\_ 276. Grape & Cable sweetmeat - purple
- \_\_\_ 277. Memphis 11 pc. fruit bowl set - purple - beautiful set
- \_\_\_ 278. Grape & Cable hatpin holder - green
- \_\_\_ **279. Grape & Cable hatpin holder - lavender - rare & super nice**
- \_\_\_ 280. Beaded Bullseye 8 1/2" vase - purple
- \_\_\_ 281. Beaded Bullseye 8" vase - marigold
- \_\_\_ 282. Grape & Cable 7 pc. water set - purple
- \_\_\_ 283. Peacocks ruffled bowl w/ribbed back - marigold
- \_\_\_ 284. Good Luck PCE bowl w/ribbed back - purple
- \_\_\_ 285. Morning Glory 16" funeral vase - marigold - has odd manufacture spot on top edge
- \_\_\_ 286. Heavy Grape 8" plate - purple
- \_\_\_ 287. Memphis 8 pc. punch set - green - small nick in side pattern, nice
- \_\_\_ 288. N's Eight Sided bushel basket - blue
- \_\_\_ 289. Wishbone ftd ruffled bowl - green
- \_\_\_ **290. Rose Show ruffled bowl - aqua opal - pastel, nice**
- \_\_\_ 291. Rose Show ruffled bowl - purple - pretty
- \_\_\_ 292. Grape & Cable bonbon - green - nice
- \_\_\_ 293. Grape & Cable bonbon - marigold - odd shape
- \_\_\_ 294. Tree Trunk 13" midsize vase - purple - super
- \_\_\_ 295. Poppy pickle dish - blue
- \_\_\_ **296. Peacock at the Fountain 8 pc. punch set - ice blue - extremely rare set, very few around, nice**
- \_\_\_ **297. Peacock at the Fountain 8 pc. punch set - ice green - super nice set & extremely rare**
- \_\_\_ **298. Peacock at the Fountain 8 pc. punch set - lime green - another rare color, punch bowl base is ice green, pinpoint on one point of bowl, 1 cup has crack**
- \_\_\_ **299. Peacock at the Fountain 8 pc. punch set - white - beautiful set, one cup has base chip, rare**
- \_\_\_ **300. Peacock at the Fountain punch bowl & base - renninger blue - very rare color, bowl is cracked and glued**
- \_\_\_ **301. Peacock at the Fountain 8 pc. punch set - purple - scarce set & nice**
- \_\_\_ **302. Peacock at the Fountain 8 pc. punch set - marigold - a beauty**
- \_\_\_ **303. Peacock at the Fountain 8 pc. punch set - purple - a second one in the auction, 1 cup has chip on base**

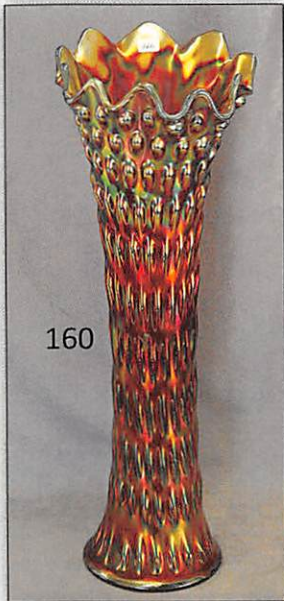
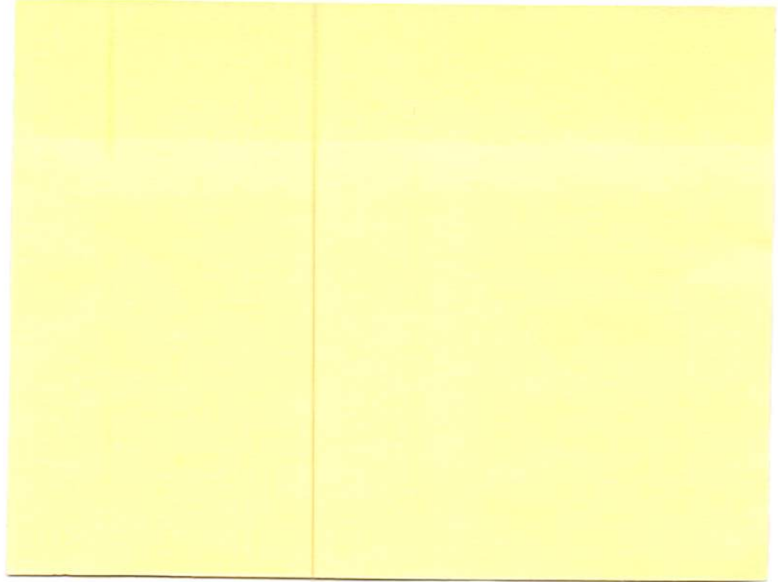
FIRST CLASS MAIL  
US POSTAGE  
PAID  
COPI

SEECK AUCTIONS  
P.O. BOX 377  
MASON CITY, IA 50402



212

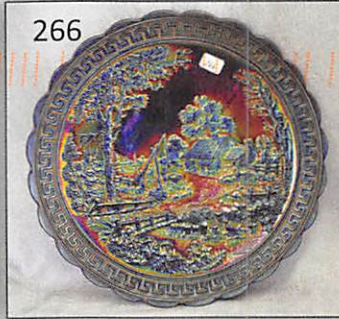
2021 CARNIVAL  
GLASS AUCTION  
JULY 10 9:30 A.M.  
MIDDLEBURY, IND.



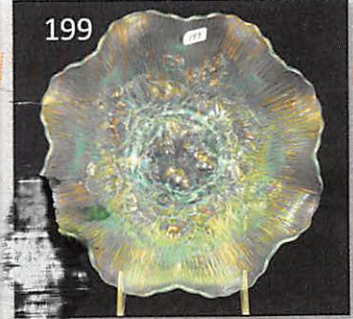
160



164



266



199



142



93



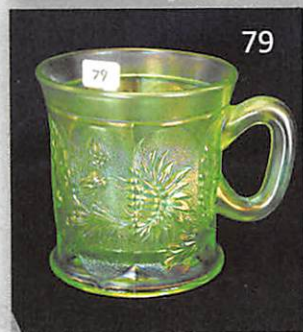
175



145



275



79



230



102



279