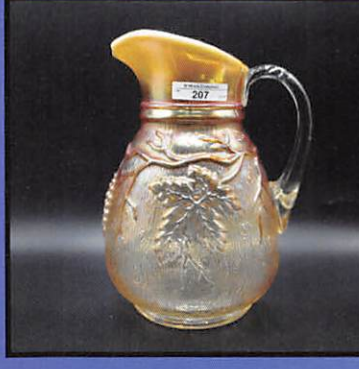
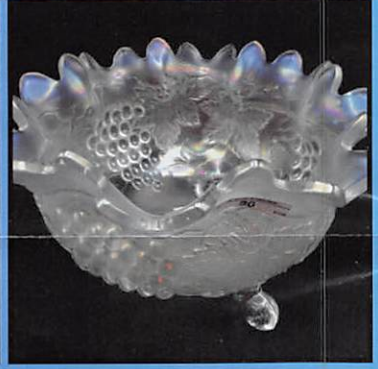
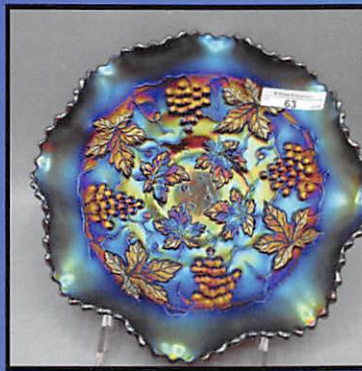


For FULL Convention information go to: www.matthewwrodauctions.com



For FULL Convention information go to: www.matthewwrodauctions.com

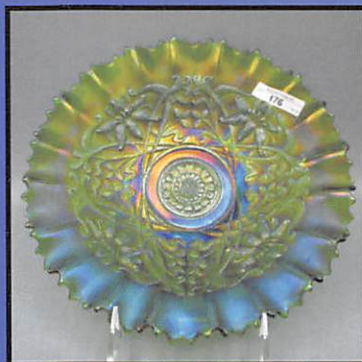
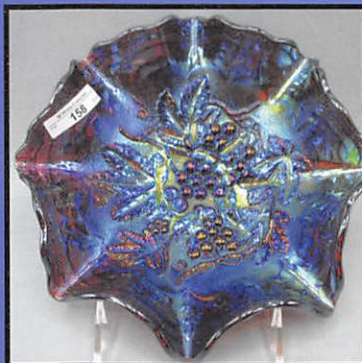
- 1 Dugan 10.5" ELEC PURPLE Wishbone & Spades chop plate. Absolutely a GEM! One of the finest you will see
- 2 Dugan 5.5" elec purple Pulled Loops squatty vase STUNNER!
- 3 Dugan 10" purple Ski Star ruffled bowl. BRIGHT
- 4 Dugan KILLER ELEC PURPLE Farmyard 3-1 edge bowl. You gonna LOVE this one!
- 5 Fenton 9" blue Holly plate, nice elec hi-lights
- 6 Fenton 9" green Thistle plate, Scarce
- 7 Fenton 9" blue Captive Rose plate, about as good as they get for this plate
- 8 Fenton 7.5" blue Elks Parkersburg 1914 plate. Very nice plate
- 9 Millersburg green Seaweed pin tray
- 10 Nwood 9" emerald green Poppy Show plate. Really don't need to say anything on this. Speaks for itself
- 11 Nwood 9" elec purple Peacocks plate, yes it looks just like picture WOW!
- 12 Nwood 8.5" white Peacocks ruffled bowl Frosty irid
- 13 Nwood 8.5" purple Sunflower ft'd bowl
- 14 Nwood 8.5" blue Embroidered Mums ruffled bowl
- 15 Nwood 8.5" Aqua Opal Poinsettia & Lattice ft'd bowl. Extremely Rare bowl and pretty!
- 16 SUPER RARE Nwood 8" Aqua Opal Sunflower ft'd bowl. Loaded with opal and color. Only 3 known to exist. A top rarity in Northwood glass.
- 17 Nwood 9" marigold on moonstone Rose Show plate. In extremely fine condition. Most all have a scuff or missing irid. This one does not. Nice dark rich irid on a stellar plate!
- 18 Fenton marigold Dancing of the Veils (Dancing Ladies) flared vase. Very Rare but does have a "U" shape crack in bottom of vase.
- 19 Imperial 11" elec. purple Heavy Grape chop plate. Very beautiful plate
- 20 Imp 10.25" purple Homestead chop plate signed NuArt. Great pressing, nice electric highlights
- 21 Imp 10.25" mari. Homestead chop plate
- 22 Imp. 9" elec. purple Ripple vase
- 23 Imp. 5.75" mari. Morning Glory vase
- 24 Imp. 7.75" clambroth Morning Glory vase
- 25 Imp. 4.75" mari. Morning Glory flared vase
- 26 Imp. 5.25" mari. Thin Rib & Drape flared vase
- 27 Imp. 6" mari. Ripple squatty vase
- 28 Imp. 10.5" mari. Parlor Panels swung vase
- 29 Imp. 11" radium mari. Smooth Panels vase
- 30 Imp. 9" elec. purple Scroll Embossed plate. Beautiful!
- 31 Imp. purple Pansy dresser tray
- 32 Imp. 9" purple Hattie deep ruffled bowl w/nice electric highlights
- 33 Imp. 9x3.75" Grape electric purple deep round bowl. Tiny flake on edge
- 34 Imp. 8" elec. purple Scroll Embossed flared bowl
- 35 Imp. Grape elec. purple decanter
- 36 2 Imp. Grape purple wines. One has crack
- 37 Imp. Grape elec. purple water pitcher- SUPER DUPER
- 38 Imp. elec. purple 9x3.5" rolled rim bowl
- 39 Nwood 12" elec. purple Tree Trunk mid-sized vase. Stunning!
- 40 Nwood 13" mari. Tree Trunk mid-size vase. very nice example
- 41 Nwood 13.25" elec. blue Thin Rib mid-size vase
- 42 Nwood 9.5" mari. Tree Trunk vase
- 43 Nwood 9" green Diamond Point vase
- 44 Nwood 6.5" dark mari. Diamond Point squatty vase
- 45 Nwood 7" lime green Drapery vase w/very nice color! Toes are OK!
- 46 Nwood white Corn vase w/stalk base
- 47 Nwood mari. Diamond Point basket. Crack in one handle
- 48 Nwood pastel aqua Opal Drapery rosebowl Excellent rosebowl
- 49 Nwood elec. blue Beaded Cable rosebowl
- 50 Nwood pumpkin mari. Beaded Cable rosebowl
- 51 Nwood aqua opal Bushel Basket w/butterscotch irid.
- 52 Nwood 5.5" elec. blue Peacock at Urn ICS bowl
- 53 Nwood 9.5" elec. blue Tree Trunk vase. This is a cool shade of blue, not quite cobalt, not quite sapphire; just a pure blue. The vase is gorgeous!
- 54 Nwood green Butterfly Bon bon w/threaded back
- 55 Nwood elec. blue G & C stippled bon bon
- 56 Nwood elec. blue G & C bon bon
- 57 Nwood green G & C stippled Vt. bon bon. This one has no stippling around center leaf. Just a couple of these known.
- 58 Nwood purple G & C powder jar
- 59 Nwood purple G & C dresser tray
- 60 Nwood elec. purple G & C butter dish
- 61 Nwood elec. purple G & C sugar bowl
- 62 Nwood purple G & C cookie jar
- 63 Nwood elec. purple G & C 8.75" bowl w/plain back
- 64 Nwood elec. purple G & C 8.75" bowl w/BW back
- 65 Nwood elec. purple G & C 8.75" plate w/BW back, fully stippled
- 66 Nwood purple G & C 11" salad bowl
- 67 Nwood purple G & C stippled 9.75" bowl
- 68 Nwood elec. purple G & C 9" plate w/plain back
- 69 Nwood elec purple G & C master berry bowl
- 70 Nwood elec green G & C master berry bowl
- 71 Nwood 10" ice green G & C ICS bowl
- 72 Nwood 9" elec. green G & C plate w/radium irid!
- 73 Nwood 8.5" emerald green G & C stippled ruffled bowl
- 74 Nwood 8.5" green G & C ruffled bowl w/BW back Pretty!!!
- 75 Nwood 8.5" elec. blue G & C stippled PCE bowl
- 76 Nwood frosty white G & C 8 pc. mid-size punch set This set has so much frosty irid. it looks like a ghost!
- 77 Nwood 8.5" mari. Wishbone bowl. Great pressing and color.
- 78 Nwood 8.5" elec. purple Rose Show bowl
- 79 Nwood 9" elec. blue Three Fruits stippled plate. Point chip at 7 o'clock.
- 80 Nwood 9" radium green Strawberry plate w/BW back
- 81 Nwood 9" purple Strawberry plate w/BW back. Attractive plate
- 82 Nwood 9" mari. Good Luck PCE bowl
- 83 Nwood 9" Renninger blue Rose Show Vt. Plate Average color
- 84 Nwood 9" mari. Poppy Show plate. Very Pretty for this



Beautiful Selection of Australian Carnival Glass

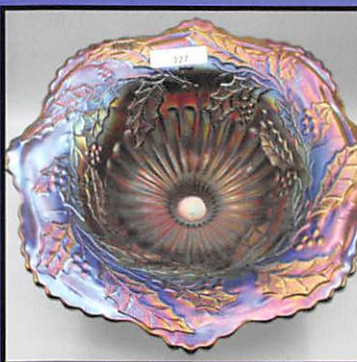
For FULL Convention information go to: www.matthewwrodauctions.com

- 85 Fenton French Opal large G & C 3-footed custard/fruit bowl. 1920's Very Rare!
- 86 Nwood elec. green G & C low-ruffled fruit bowl
- 87 Nwood lime green G & C low-ruffled fruit bowl
- 88 Nwood ice blue G & C low-ruffled fruit bowl
- 89 Nwood white G & C footed centerpiece bowl. Points up
- 90 Nwood frosty white G & C large fruit bowl
- 91 Nwood 8.5" white Heart & Flower ruffled bowl
- 92 Nwood 8.5" white Heart & Flower PCE bowl
- 93 Nwood 8.5" ice blue Poinsettia & Lattice footed bowl
- 94 Fenton? frosty white G & C Vt. ruffled fruit bowl w/Leaf collar base. Not sure we have seen this before. Very attractive bowl!
- 95 Fenton frosty white 16" Rustic funeral vase. Absolutely Beautiful!
- 96 Fenton 12" powder blue Fine Rib vase
- 97 Fenton 9" sapphire Butterfly & Berry pulled vase. Chip on collar base but Rare Color!
- 98 Fenton 9" cobalt Butterfly & Berry pulled vase.
- 99 Fenton 9" mari. Orange Tree plate
- 100 Fenton 8.5" dark mari. Holly ICS bowl
- 101 Fenton 8" mari. Dragon & Lotus footed ICS bowl Very pretty!
- 102 Fenton 10" blue Ten Mums ruffled bowl
- 103 Fenton 7" green Horse Medallion footed ruffled bowl
- 104 Fenton blue Vintage fern-sides straight up
- 105 Fenton 10" mari. Stag & Holly footed ICS bowl
- 106 Dugan purple 8.5" Ski Star 3/1 edge dome footed bowl. Bright iridescence
- 107 Dugan purple Grape Delight rosebowl. chip on one toe
- 108 Dugan bright white Grape Delight footed rosebowl
- 109 Dugan 9.5" frosty white Lined Lattice vase
- 110 Dugan purple Many Fruits 8 pc. punch set w/electric highlights. Very attractive!
- 111 Dugan mari. 7 pc. Many Fruits punch set
- 112 Nwood 8.5" elec. purple Strawberry PCE bowl w/Plain back
- 113 Nwood 8.5" purple stippled Strawberry ruffled bowl
- 114 Nwood 8.5" olive green Strawberry ruffled bowl w/Plain back. Neat color w/pretty irid!
- 115 Nwood 9" elec. purple Stippled Strawberry PCE bowl
- 116 Nwood elec. purple 9" Three Fruits Medallion spatula footed bowl. Exceptional color for this!
- 117 Nwood 9" elec. purple Three Fruits low ruffled bowl
- 118 Nwood 8.5" bright pastel mari. Three Fruits stippled bowl. Stunning!
- 119 Nwood 9" blue Peacocks PCE bowl w/elec. highlights
- 120 Nwood 9" elec. blue Peacocks ruffled bowl
- 121 Nwood 9" bright mari. Peacocks plate
- 122 Nwood 19" green Tree Trunk funeral vase. VERY RARE color and SUPER pretty!
- 123 Nwood 19" elec blue Tree Trunk funeral vase. AWESOME vase w/ elec 7/8 way down. Does lean a little bronze at base about 2" up. WOW!
- 124 Nwood 18.5" elec purple Tree Trunk funeral vase. This is about as good as they get for purple. A real looker!
- 125 Nwood 11.5" LIME GREEN Tree Trunk mid-size vase RARE COLOR!
- 126 Nwood 11" frosty white Tree Trunk mid-size vase. Shortest I have seen for this vase in any color!
- 127 Nwood fabulous electric Apple green 8.5" Three Fruits Stippled ruffled bowl. Stellar color! VERY RARE BOWL
- 128 Nwood 8.5" pastel AO Three Fruits stippled ruffled bowl. Super!
- 129 Nwood 8.5" pastel mari. Three Fruits stippled ruffled bowl. Super!
- 130 Nwood 8.5" purple Three Fruits stippled ruffled bowl. Pretty!
- 131 Nwood 9" elec blue Three Fruits Stippled plate. Absolutely gorgeous. Does have minor rubbing on fruit!
- 132 Nwood 9" dark mari. Three Fruits stippled plate.
- 133 Nwood 9" radium mari. Three Fruits plate w/plane back
- 134 Nwood 7" purple Wild Strawberry bowl
- 135 Nwood 9" radium mari. Strawberry plate w/plain back. Very pastel irid.
- 136 Nwood 9" purple Stippled Strawberry plate
- 137 Nwood 9" amber? Strawberry PCE bowl w/BW back. Very odd color. Has extremely heavy irid.
- 138 Nwood 8.5" elec purple Stippled Strawberry ruffled bowl. Very bright!
- 139 Nwood 8.5" horehound Strawberry ruffled bowl. This is one attractive looking bowl!
- 140 Nwood 8.5" elec. purple Strawberry ruffled bowl w/BW back
- 141 Fenton 8.5" emerald green Peacock at Urn 8-ruffle bowl. Haven't seen one like this in a LONG time. Buy it!!!
- 142 Fenton 8.5" purple Peacock at Urn 8-ruffle bowl w/beautiful electric highlights.
- 143 Fenton 9" dark mari. Dragon & Lotus 3/1 edge bowl
- 144 Fenton 9" green Dragon & Lotus 3/1 edge bowl. Rare color for this shape
- 145 Fenton 8" elec. light amy. Dragon & Lotus footed ICS bowl. The best you'll ever see!!! Stunning!
- 146 Fenton 7" radium green Vintage plate
- 147 Fenton 7.5" mari. Horse Medallion plate
- 148 Fenton 7.5" blue Leaf Chain plate
- 149 Fenton 7" purple 1910 Detroit Elks ruffled bowl
- 150 Fenton 8.5" purple Ten Mums CRE bowl. Sweet!
- 151 Fenton 7" emerald green Horse Medallion footed ruffled bowl. Outstanding!
- 152 Fenton 8" red Stag & Holly footed ruffled bowl. Feet are more yellow. Average color
- 153 Fenton 9" PO Dragon & Lotus 8-ruffled bowl. Scarce!
- 154 Fenton 9.5" powder blue Fine Rib vase
- 155 Fenton 10" vaseline Fine Rib vase
- 156 Imp. 9" elec. purple Scroll Embossed plate
- 157 Imp. 9" elec purple Cobblestone bowl. Haven't seen one like this in awhile
- 158 Imp. Grape 8.5" elec. purple ruffled bowl. Rich color
- 159 Mburg 9.5" purple Primrose ruffled bowl
- 160 Mburg 8.5" purple Trout & Fly 3/1 edge bowl
- 161 Mburg 7" green Hanging Cherries ICS bowl
- 162 Mburg 6.75" radium green Holly ruffled bowl
- 163 Camb. Near Cut blue Inverted Strawberry octagon tumbler. Very rare whimsey



For FULL Convention information go to: www.matthewwrodaauctions.com

- 164 Nwood 9" emerald green Peacocks PCE bowl. Fantastic!!
- 165 Nwood 9" pastel mari. Peacocks PCE bowl
- 166 Nwood bright green Peacocks ruffled bowl Very nice!
- 167 Nwood 8.5" blue opal Peacocks ruffled bowl
- 168 Nwood 8.5" elec. purple Peacocks ruffled bowl
- 169 Nwood 8.5" elec. blue Peacocks PCE bowl point missing at 5:00
- 170 Nwood 9" bright elec. blue Peacocks plate.
- 171 Nwood 9" mari. stippled Peacocks plate.
- 172 Nwood 9" elec. blue stippled Peacocks plate. Beautiful stretchy irid!
- 173 Nwood 9" elec. blue stippled Peacocks plate.
- 174 Nwood 9" elec purple Peacocks plate.
- 175 Nwood 9" elec. purple Peacocks plate. A little deeper than 174
- 176 Nwood 9.5" green Wishbone PCE bowl
- 177 Nwood 9.5" purple Wishbone ruffled bowl
- 178 Nwood 10" mari./pastel mari. Wishbone plate Very pretty!
- 179 Nwood 9.5" mari. Wishbone ruffled bowl
- 180 Nwood 8.5" purple Wishbone footed plate
- 181 Nwood 8.5" mari. Wishbone footed plate
- 182 Nwood 8" mari. Wishbone footed bowl
- 183 Nwood 9.5" elec. blue Rose Show plate Very nice! Might be a tiny tiny flake on one petal
- 184 Nwood 9" pastel mari. Rose Show ruffled bowl. Sweet!
- 185 Nwood 9" elec. purple Rose Show ruffled bowl. Very nice bowl!
- 186 Nwood 9" mari. Heart & Flower plate. Beautiful color!
- 187 Nwood 9" elec. purple Heart & Flower ruffled bowl.
- 188 Nwood elec. blue Embroidered Mums ruffled bowl
- 189 Nwood 10.5" purple G & C ICS bowl
- 190 Dugan 9" elec. purple Double Stem Rose dome footed bowl
- 191 Nwood 9" bright emerald green Good Luck plate. This is a fantastic piece of Carnival!!!
- 192 Nwood 8.5" emerald green Good Luck PCE bowl
- 193 Nwood 8.5" electric blue Good Luck PCE bowl
- 194 Nwood 8.5" green Good Luck PCE bowl w/BW back
- 195 Nwood 8.5" electric blue stippled Good Luck PCE bowl
- 196 Nwood 8.5" electric blue stippled Good Luck ruffled bowl
- 197 Nwood 8.5" bright mari Good Luck ruffled bowl
- 198 Nwood 8.5" mari. Good Luck ruffled bowl w/BW back. Very nice color!
- 199 Nwood 9" pastel mari. Good Luck stippled ruffled bowl
- 200 Nwood 8.5" elec. green G & C ruffled bowl w/Plain back
- 201 Nwood 8.5" green G & C ruffled bowl w/BW back
- 202 Nwood 8.5" elec. purple G & C ruffled bowl w/Plain back. Super!
- 203 Nwood purple G & C shot glass
- 204 Nwood 8.5" ice blue Nippon PCE bowl w/BW back
- 205 Nwood 9" bright green Tree Trunk vase Very attractive!
- 206 Nwood 13" purple Tree Trunk mid-size vase w/electric highlights
- 207 Dugan PO Vineyard water pitcher. Rare!
- 208 Fenton sapphire opal Blackberry Spray ruffled hat
- 209 Fenton 7" Peach Opal Acorn ruffled bowl. Rare!
- 210 Fenton 7" mari on Moonstone Acorn ruffled bowl Rare!
- 211 Australian Crown Crystal- black amethyst Butterfly & Christmas Bell 7" stemmed cake plate/salver.
- 212 Australian Crown Crystal- black amethyst Butterfly 6.5" compote
- 213 Australian Crown Crystal- 10" mari. Magpie ruffled bowl w/Fern & Wattle ext.
- 214 Australian Crown Crystal- black amy. 9" Thunderbird 12-ruffle bowl w/Fern & Wattle Ext. Great pressing!
- 215 Australian Crown Crystal- mari. 9" Thunderbird 12-ruffle bowl w/Fern & Wattle Ext. Great pressing! Rare color!
- 216 Australian Crown Crystal- mari. 7" Trailing Flowers deep round bowl. Rare!
- 217 Australian Crown Crystal- mari. Bullrushes and Bush Orchids 7" deep round bowl
- 218 Australian Crown Crystal- mari. 7" Lattice & Styles ruffled bowl
- 219 Australian Crown Crystal- black amy. Diamonds ruffled sugar bowl
- 220 Australian Crown Crystal- black amy. Banded Diamonds tumbler
- 221 Australian Crown Crystal- mari. 5.5" Lattice & Styles PROOF deep round bowl. Very Rare!
- 222 Australian Crown Crystal- mari. 7" Butterfly ruffled compote w/Broken Chain ext.
- 223 Australian Crown Crystal- 9" mari. Pin Ups ICS bowl. Rare pattern Rare Size!
- 224 Australian Crown Crystal- 9" black amy. Pin Ups ICS bowl. Rare Pattern. Rare Size!
- 225 Australian Crown Crystal- 9" mari. "Doe" Kangaroo 16-ruffle deep bowl. (Doe is the female version. This pattern shows the Kangaroo to be smaller and she is sitting on a branch)
- 226 Australian Crown Crystal- 9" black amy. "Buck" Kangaroo 16-ruffle deep bowl. Rare!
- 227 Australian Crown Crystal- 9" crystal Pin Ups ruffled bowl. Hardly ever seen in crystal. Very unique!
- 228 Australian Crown Crystal- 6.5"T x 8.75"W aqua Hobnail & Cane compote. Very Rare!
- 229 Australian Crown Crystal- 9" black amy. Butterfly & Waratah ruffled compote on a metal base. As shown in the Australian Carnival Glass book by Ken Arnold. All original and very rare!
- 230 Australian Crown Crystal- 9" mari. Butterfly & Waratah ruffled compote on a metal base. The metal base to this compote was possibly done AFTER manufacturing. Outstanding color!
- 231 Australian Crown Crystal- 5" black amy. Kangaroo nappy. Note: in Australia they call these nappies. In the US they call them berry bowls
- 232 Australian Crown Crystal- 5" black amy. Swan nappy.
- 233 Australian Crown Crystal- 5" black amy. King Fisher nappy
- 234 Australian Crown Crystal- 5" black amy. Magpie nappy



For FULL Convention information go to: www.matthewwrodauctions.com

- 235 Australian Crown Crystal- 5" black amy. Swan nappy
- 236 Australian Crown Crystal- 5" mari. Kangaroo nappy
- 237 Australian Crown Crystal- 5" Swan nappy
- 238 Australian Crown Crystal- 9.5" mari. Swan 8-sided master bowl. Absolutely beautiful. Has Fern & Wattle ext.
- 239 Australian Crown Crystal- 9" mari. King Fisher 12-ruffle bowl
- 240 Australian Crown Crystal- 9" black amy. King Fisher 12-ruffle bowl. Rare!
- 241 Australian Crown Crystal- 9" black amy. Swan 16-ruffle bowl w/exceptional color!
- 242 Australian Crown Crystal- 9" black amy. King Fisher Vt. 12-ruffle bowl. Note: berries in the leaves. Rare!
- 243 Australian Crown Crystal- mari. 10" Heavy Diamond float bowl w/matching flower frog. Extremely rare!
- 244 Australian Crown Crystal- dark mari. 11" Kookaburra float bowl. Extremely rare! Great pressing & color!
- 245 Australian Crown Crystal- 9" black amy. Kookaburra Vt. ICS bowl made from a master bowl. Spotty irid. to the left of the bird. Extremely rare bowl.
- 246 Australian Crown Crystal- black amy. 4"t x 7"W Butterfly & Christmas Bell ruffled compote w/Broken Chain ext.
- 247 Australian Crown Crystal- 9" black amy. Magpie 8-ruffle master bowl w/Fern & Wattle Ext.
- 248 Australian Crown Crystal- 9.5" mari. Kookaburra 12-ruffle master bowl w/Fern & Wattle Ext.
- 249 Australian Crown Crystal- 9" mari. King Fisher 12-ruffle bowl
- 250 Australian Crown Crystal- mari. 6"Tx 10" W Butterfly & Flannel Flower flattened out large ruffled compote. Rare pattern & Shape!
- 251 Australian Crown Crystal- 7" black amy. Lattice & Styles ruffled bowl
- 252 Australian Crown Crystal- 6.25" black amy. Butterfly Bower dome footed bowl w/Quilted Diamond ext.
- 253 Australian Crown Crystal- black amy. 6.25 T x 9.5" W Butterfly & Waratah stemmed compote. Rare!
- 254 Australian Crown Crystal- 3" mari. miniature Rolled Ribs vase. Just a few known and we have 2!
- 255 Australian Crown Crystal- 3" mari. miniature Rolled Ribs vase. Just a few known and we have 2!
- 256 Australian Crown Crystal- 8" mari. Rolled Rib vase w/4" base. Rare!
- 257 Australian Crown Crystal- 10" mari. Rolled Rib vase. Rare!
- 258 Australian Crown Crystal- 8" pink Gum Tips vase. Ultra Rare!. Not Carnival
- 259 Australian Crown Crystal- 8" vaseline (citron) Gum Tip twisted vase. Ultra rare color and twist. Not Carnival
- 260 Australian Crown Crystal- 10" mari. Lily vase w/16 ribs and 4.75" base. Not to be confused with Gum Tips vase. Extremely rare & pretty.
- 261 Australian Crown Crystal- 10" mari. Gum Tips whimsey vase, 4" base w/5" opening. This is Australian's version of a "Workman's Piece", The vase has a pour spout formed by using a coin. This is noted in the Australian books.
- 262 Australian Crown Crystal- 9" black amy. Gum Tips whimsey vase, 5" mouth, 3.5" base. This is Australian's version of a "Workman's Piece", The vase has a pour spout formed by using a coin. This is noted in the Australian books.
- 263 European mari. Facets 7 pc. footed berry bowl set. Extremely rare!
- 264 Sowerby mari. Daisy Block row boat.
- 265 European 10" dark mari. Four Flowers low ruffled chop plate.
- 266 Fenton 9" mari. Coral plate
- 267 Fenton 8.5" white Leaf Chain ruffled bowl
- 268 Fenton 8.5" white Orange Tree ICS bowl
- 269 Fenton vaseline Orange Tree flared compote. Not carnival
- 270 Fenton 9" blue Dragon & Lotus ICS bowl
- 271 Fenton 8.5" PO Peacock & Grape 3/1 edge bowl
- 272 Fenton 9" purple Concord plate. Excellent pressing
- 273 Fenton 9" mari. Water Lily footed bowl
- 274 Fenton 8" blue Stag & Holly spatula footed bowl
- 275 Fenton 9" bright mari. Peacock at Urn ruffled bowl
- 276 Fenton 22" purple Rustic funeral vase w/massive top. Beautiful electric highlights. Has the plunger base. You'll like this one!!
- 277 Fenton frosty white Apple Tree water pitcher
- 278 4 celeste blue Adams Rib handled goblets
- 279 Fenton 8.5" green Butterfly & Berry vase
- 280 2 Fenton 8" Butterfly & Berry vases. Blue & mari.
- 281 Imp.8" elec. lavender Shell & Sand bowl. Stunning.
- 282 Imp. 8" dark radium mari. Shell ruffled bowl
- 283 Imp. elect. purple Scroll Embossed compote
- 284 Imp. light smoke Scroll Embossed compote
- 285 Imp. Heavy Grape 11" mari. chop plate
- 286 Imp. 9" radium mari. Curled Rib JIP vase
- 287 Imp. 8.5" mari. 474 vase
- 288 Imp. 10" mari. 474 vase
- 289 Imp. 10" crystal 474 vase
- 290 Imp. 1" crystal 474 vase
- 291 Nwood AO Fruits & Flowers bon bon. On the butterscotch side
- 292 Nwood 8.5" pastel mari. Greek Key bowl
- 293 Nwood 9" bright green G & C stippled plate. Old Rose Distillery
- 294 Nwood 9" purple G & C plate w/BW back. Stretchy effect
- 295 Nwood 9" IB G & C stippled PCE bowl
- 296 Nwood 8.5" white Hearts & Flowers ruffled bowl
- 297 Nwood 8.5" IB Hearts & Flowers ruffled bowl
- 298 Nwood 10" pastel mari. G & C ruffled bowl. Outstanding piece of glass
- 299 Nwood 9.5" white Rose Show plate
- 300 Nwood mari. 5 pc. Singing Birds water set
- 301 Nwood 9" IB Nippon PCE bowl
- 302 Nwood 9" white Peacocks plate. Very Frosty
- 303 Nwood 8.5" IB Peacocks ruffled bowl
- 304 Nwood 9" bright green Peacocks plate Beautiful plate!
- 305 Nwood 9" pastel mari. Peacocks Stippled plate
- 306 Nwood 8.5" elec. blue Embroidered Mums ruffled bowl. Very nice!
- 307 Nwood elec. purple G & C sweet meat
- 308 Dugan 7" vaseline Estate stippled vase. Rare!
- 309 West. mari. 8.5" Scales ruffled bowl. Quite pretty

- 310 Mburg 6" green Cosmos ruffled bowl Not many ruffled ones around!
- 311 Mburg 9" purple Blackberry ruffled bowl
- 312 Nwood mari. Grape & Gothic Arches 4-pc. complete table set
- 313 Nwood 9" dark mari. Three Fruits stippled plate
- 314 Imp. 8.5" elec. purple Double Dutch footed bowl. Outstanding color! Not many around!
- 315 Imp. 9" purple Freefold vase. Pretty & probably the shortest one we've seen
- 316 Dugan 12" elec. purple Target vase
- 317 Dugan 9" elec. purple Apple Blossom Twigs low ruffle bowl. Beautiful!
- 318 Nwood 10" IB Thin Rib vase
- 319 Nwood 11" IB Tree Trunk vase
- 320 Nwood frosty white Grape Arbor 5 pc. tankard set
- 321 Dugan 6" PO Four Flowers plate. Very Nice!
- 322 Nwood 6" pastel mari. Peacock at Urn stippled ICS bowl
- 323 Terry Crider aqua opal Cherries water glass
- 324 Nwood radium elec. purple Singing Birds mug. Beautiful!
- 325 3 Dave Doty Field Guide to Carnival Glass books All are signed
- 326 Fenton 17" BLASTING Elec Blue Rustic funeral vase. This is a VERY FINE example of Fenton electric blue. HOT LOT!! You are gonna love this one!!
- 327 Dugan purple Christmas Compote. Has beautiful electric hi-lights all through out. Always on a wish list
- 328 Dugan DARK MARIGOLD Christmas Compote. Much harder to find than purple, and again, always on the wish list
- 329 Dugan 8.5" ice green Pony 10 ruffled bowl, Scarce
- 330 Dugan 9" blue Windflower plate. Couple sharp MANUFACTURING points- no chips
- 331 Dugan peach opal Persian Garden fruit set. Scarce set
- 332 Dugan brilliant elec purple Grape Delight rosebowl
- 333 Dugan purple Twigs JIP vase w/ CRE. What a cutie!
- 334 Nwood 13" purple Tree Trunk mid-size vase.
- 335 Nwood 14" purple Tree Trunk elephant foot vase. Real wide open top with lots of ruffles. Great character.
- 336 Fenton blue Butterfly novelty. - RARE ALWAYS sought after
- 337 Fenton chocolate glass Orange Tree powder jar. RARE
- 338 Fenton 9" blue Heart & Vine plate. SWEET!
- 339 Fenton 9" dark marigold 2 Flowers plate. This is the RARE collar base plate.
- 340 Fenton 9" bright marigold Peter Rabbit plate. WOW! KILLER COLOR! Awesome plate
- 341 Fenton 9" elec green Peter Rabbit plate. BUY IT! SMOKING HOT!
- 342 Fenton 8" clambroth Leaf Chain ICS bowl
- 343 Fenton 8" RED Stag & Holly ft'd ruffled bowl. Tiny flake on one toe. TINY!!!
- 344 Fenton 9.5" Brick Red Little Flowers ICS bowl. RARE shape for this bowl
- 345 Fenton 9" dark marigold Orange Tree plate A keeper!
- 346 Fenton 9" marigold Peacock and Grape plate.
- 347 Fenton purple Rustic jardinière w/ flared top. Does have a crack as shown. Some people attribute this to Millersburg. Awesome looking piece of glass
- 348 Fenton 19" dark marigold Rustic Funeral vase. This vase has had a buffing done to it on the mouth, but what a attractive vase!
- 349 Imperial smoke Corn bottle. Nice
- 350 Imperial 7" BLUE Hobstar ruffled deep bowl. VERY RARE and looks blue!
- 351 Imperial 9" smoke Scroll Embossed bowl w/ file ext
- 352 Imperail emerald green Mayflower shade w/ 4" fitter
- 353 Imperial 8.25" elec purple Windmill deep round bowl.
- 354 Imperial 10" Mari on Milk Glass Floral & Optic ftd chop plate. Delores Sage collection.
- 355 Imperial elec purple Loganberry vase. SUPER
- 356 Imperial COBALT BLUE Pansy Nappy- VERY RARE!
- 357 Imperial 18" mari Morning Glory funeral vase. Darker than you normally find.
- 358 Carnival Glass BA Plumes & Buckle hatpin (no stick)
- 359 Mburg marigold Hobnail sugar lid nice part if needed
- 360 Mburg 9" green Nesting Swan ruffled bowl
- 361 Carnival Glass marigold Regal Cane clock from Britt collection.
- 362 Golden Wedding Whiskey Box & Bottle.
- 363 Nwood ice green Corn Vase w/ Marigold overlay. Scarce vase. Has stalk base
- 364 Nwood purple Ivy Town Pump. Morgan collection 2011
- 365 Nwood elec blue Peacock at Fountain ruffled compote
- 366 Nwood elec blue Fruits & Flowers compote SUPER ONE!
- 367 Nwood butterscotch AO Dandelion mug
- 368 Nwood elec purple G&C tumbler
- 369 Nwood elec blue Grape Arbor tumbler Fredericka 2014. RARE
- 370 UNREAL Nwood electric blue Grape Arbor tankard. This is an absolute butt kicker! John Rogers once said "This is the best one he has ever seen" I agree.
- 371 Nwood 8.5" elec blue Embroidered Mums bowl. Very good lookin' bowl!
- 372 Nwood 8.5" elec purple Good Luck PCE bowl
- 373 Nwood 8.5" aqua opal Peacocks bowl. Plenty of opal
- 374 Nwood 9" lime green Peacocks plate Nice dark base color.
- 375 Nwood 9" ice green Embroidered Mums plate. Scarce. Pretty irid for this.
- 376 Nwood ice green Grape & Cable ferner. Very rare ferner- does have a couple chips on edge as shown
- 377 Nwood HOT elec purple Grape & Cable banana boat. SUPER is all I can say.
- 378 6 Nwood ice blue Acorn Burr punch cups
- 379 Nwood ice blue Acorn Burr punch base
- 380 Nwood marigold Acorn Burr punch base
- 381 Stretch Glass 14" red Wide Panel platter
- 382 Stretch Glass 5" red compote

383 Imperial red stretch glass Floral & Optic bowl
 384 Imperial jewels 5.5" ruby pearl vase w/ rosebowl top
 385 Imperial 6" square ruby pearl bowl. Faint Iron Cross mark
 386 Fenton marigold Kittens cup and saucer
 387 Fenton dark mari Orange Tree Loving cup
 388 Fenton chocolate glass Orange Tree hatpin holder RARE
 389 Tangerine Stretch glass candleholders
 390 Imperial marigold 5.5" 474 rosebowl w/ headdress interior. Scarce
 391 Robert Hansen red Moon & Stars rosebowl
 392 Mburg 9" green Fluer de Lys 6 ruffled bowl
 393 Mburg 6" rad green Blackberry 3-1 edge bowl
 394 Mburg 6" radium purple Grape Wreath CRE bowl
 395 Mburg 5.5" purple Peacock at Urn berry bowl No Urn shotgun proof- RARE
 396 Mburg 5.5" marigold Peacock at Urn berry bowl No Urn shotgun proof- RARE
 397 Mburg 7.5" radium purple Holly Sprig CRE deep bowl
 398 Dugan 9" black amy Apple Blossom Twig plate w/ smooth edge
 399 Imperial 11" elec purple Grape ruffled salad bowl
 400 Imp elec purple Open Rose elec purple fernery. Couple chips on edge
 401 Imp purple 6" Grape plate. nice elec hi-lights
 402 Imp 8.5" elec purple Star of David ruffled bowl
 403 Cambridge green Inverted Strawberry candlestick flaking on base as usual
 404 Imp Grape pastel marigold wine bottle. Looks like light linens... cool look
 405 Imp Grape dark mari wine bottle- DARK
 406 Imp Grape dark smoke wine bottle- WOW!
 407 West mari Fruit Salad 13pc punch set- scarce
 408 Fenton 8" bright purple Dragon & Lotus ICS ft'd bowl.
 409 Fenton 10" blue Persian Medallion chop plate.
 410 Fenton 9" mari Plaid ruffled bowl
 411 Fenton 9" Black Amy Peacock and Grape 8 ruffled bowl- RARE color
 412 Fenton 9" It amy Persian Medallion CRE flared bowl Good lookin' bowl
 413 Nwood 5.5" elec blue Peacock at Urn ICS bowl
 414 Nwood 5.5" elec blue Peacock at Urn ICS bowl, stippled.
 415 Nwood 11" pumpkin mari Peacock at Urn MIC bowl. WOW!
 416 Nwood 9" elec green G&C stippled plate. NICE
 417 Nwood 9" pastel mari Peacocks Stippled plate.
 418 Nwood purple G&C powder jar.
 419 Nwood purple G& C sweetmeat.
 420 Nwood purple Memphis 2 pc fruit set
 421 Nwood 8.5" white Rose Show bowl
 422 Nwood 8.5" mari Poppy Show bowl.
 423 Nwood 8.5" mari Heart & Flower PCE bowl.
 424 Nwood 8.5" aqua opal Peacocks bowl. Pretty Has a couple burn marks at 9:00 as shown- NOT DAMAGE
 425 Fenton 9" dark mari Orange Tree plate. BRIGHT!
 426 Fenton 9" mari Thistle plate. VERY RARE PLATE and VERY PRETTY!

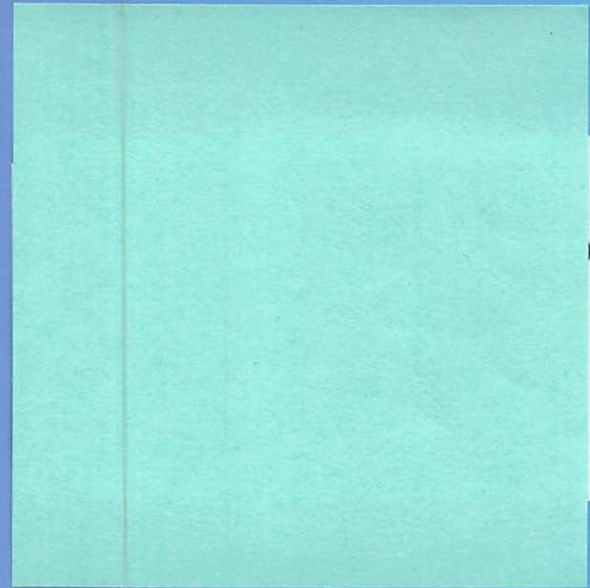
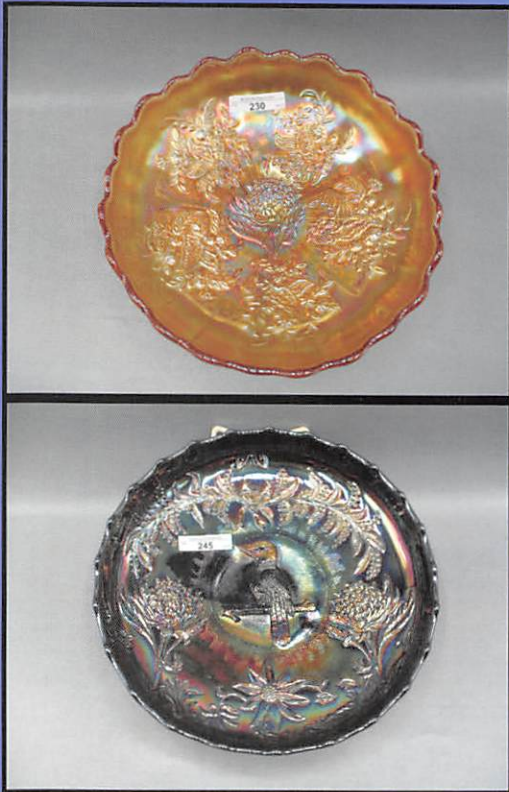
427 Fenton 9" elec purple Thistle plate. WOW. This is a BEAUTIFUL plate! RARE
 428 Fenton 9" BLUE Peacock at Urn plate.
 429 Nwood 8.5" green Heart & Flower ruffled bowl. scarce
 430 Nwood 9" mari Heart & Flower plate. Scarce- leans pastel.
 431 Nwood 8.5" sapphire good Luck ruffled bowl. This bowl LOOKS sapphire!
 432 Fenton 8.5" green Heart & Vine variant 8 ruffled bowl w/ bearded berry ext. Scarce

Thank you for participating in today's auction! See you Berlin, Ohio at the ACGA Convention!! Make your reservations now. go to www.myacga.com for all convention information.



WRODA AUCTIONS
58 EAST MAIN ST
WESTFIELD, NY 14787

PRESORTED
FIRST CLASS MAIL
U.S. POSTAGE
PAID
CELINA, OH
PERMIT NO. 99



Keystone Carnival Glass Convention Auction 2021
Saturday, May 15th 2021 at 9:00 AM EST
Holiday Inn - Grantville, PA.
604 Station Rd. Grantville, PA 17028

This year, please EMAIL: StephanieFlaco@stayholiday.com for room reservations. Please do not call, they are short staffed at this time due to Covid re-start but they are increasing staff daily.

**** You do NOT need to be a member of Keystone to participate in this auction.**

We have over 400 lots for you this year from the Kaps and Eccleston Collections. A beautiful collection with something for everyone for sure. We also will have one of the largest Australian Carnival Glass collections that we have ever had. Some real rarities will be offered! Please join us for this outstanding auction!

This is a LIVE in -person auction and a LIVE internet auction powered by Auction Flex. If you are using auction flex, PLEASE put in your method of payment in the "Note to auctioneer" box.

Terms: Cash Check Visa MC Discover and PayPal with 4% BP. There is a 4% discount for cash & check. Shipping information is open the website.

Jim Wroda Auctioneer- AU 005279 and Mike Baker Auctioneer AU005297

For FULL Convention information go to: www.matthewwrodauctions.com