



The Reyan Collection

Heart of America
Carnival Glass Association



Online Only Carnival Glass 2021 Auction

Saturday, April 24
9:30 a.m.

Columbia Club ♦ 551 South Taft Ave.
Mason City, Iowa



Seeck Auctions
Jim & Jan Seeck
641-424-1116



Jim & Jan Seeck

SATURDAY, APRIL 24 — 9:30 A.M.

641-424-1116

★ **BIDDING** is available on-line through Auction Flex at: www.seeckauction.com

★ **NO BUYER'S PREMIUM** -- EMAIL: jimjan@seeckauction.com

The Reyan Collection

The year has come and gone and we are sorry to say that the HOACGA convention in Kansas City has once again been canceled due to hotel policies concerning Covid. We will continue this year to sell the fantastic Reyan collection as an Online Only Auction. Travis has collected for many years and is always out

and about hunting for glass. The variety of glass in the auction is awesome including some fabulous whimsies which just don't come out very often. You may bid as usual Online Only or you may bring your laptops, iPads, etc. to Mason City and join us for the "HOACGA Lite Event" - **Details below**

2021 HOACGA Lite Event – April 23rd and 24th

Contemporary Online Only Auction

- ◆ Starts Monday, April 19th
- ◆ Ends Friday evening, April 23rd beginning at 7 pm CST

Saturday, April 24th – The Travis Reyan Online Only Carnival Glass Auction

- ◆ Starts Monday, April 5th
- ◆ Ends Saturday morning, April 24th beginning at 9:30 am CST

Both of these Online Only auctions will be open and available for viewing at the Columbia Club in Mason City, Iowa. This is a great venue with plenty of room for glass viewing and social distancing. We will have round tables set up for seating. You are welcome to come and view the glass and bid during the contemporary auction on Friday eve-

ning and the Reyan Auction on Saturday. We will have extension cords for your computers and WiFi will be available. After the completion of each auction you may check out and take your successful purchases with you. As of right now, masks are required to be worn in the Columbia Club.

Columbia Club — 551 S. Taft Ave. Mason City, Iowa 50401

Bob & Shirley Patterson Open House

Wonderful collection of Carnival Glass, Hansen Glass and Art Glass - Friday, April 23rd - 12 noon to 3 pm – light lunch will be served.
(310)733-7867 2929 Rainbow Drive, Mason City, Iowa 50401

- ◆ **Preview of all auction glass starts at 3 pm on Friday, April 23**
- ◆ Dinner on your own Friday evening (all of the restaurants are open in Mason City)
- ◆ Lunch will be served at the Columbia Club on Saturday noon during the Reyan Auction.

If you plan on attending the auctions, please RSVP to Jim and Jan Seeck by email or phone call.
jimjan@seeckauction.com or 641-424-1116

LODGING: (all of these are close to the Columbia Club with the Historic Park Inn being downtown) Country Inn & Suites: 641-423-1770; Holiday Inn Express & Suites: 641-424-1200; Hampton Inn 641-435-7500; The Historic Park Inn: 641-422-0015 (only remaining Frank Lloyd Wright designed hotel in the world)

Visit the Heart of America Carnival Glass Association on the Internet at: WWW.HOACGA.

- ___ 1. Flute breakfast set - purple - pretty
- ___ 2. Fruits & Flowers 7" ruffled bowl - amethyst opal - unusual & rare color for this piece, opal on three ruffles
- ___ 3. Fruits & Flowers 7" ruffled bowl - blue - very pretty



___ 4. Double Dutch ftd ruffled bowl - clambroth - very pretty yellow irid.

___ 5. Tree Trunk 13" midsize vase- marigold on moonstone - spectacular piece of glass, fantastic irid. & extremely rare, WOW

___ 6. Tree Trunk 13" midsize vase - purple - very pretty, has Fenton Factory numbers on bottom

___ 7. Tree Trunk 13" midsize vase - marigold - super

___ 8. Tree Trunk 13" midsize vase - custard w/nutmeg - not Carnival Glass, scarce

___ 9. Tree Trunk 13 1/2" midsize vase - black glass - not Carnival Glass, not iridized, scarce

___ 10. Tree Trunk 14" midsize vase - clear glass - not Carnival Glass, not iridized, scarce

___ 11. N's Peacock at Urn master IC bowl - aqua opal - originally from the Whitley Collection, spectacular, as nice as these get



___ 12. N's Peacock at Urn master IC bowl - ice blue - nice

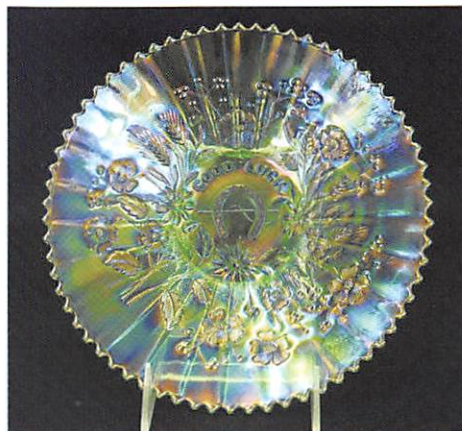
___ 13. N's Peacock at Urn master IC bowl - purple - nice for these

___ 14. N's Peacock at Urn master IC bowl - marigold - dark w/pretty pink highlights

___ 15. N's Peacock at Urn master IC bowl - pastel marigold - lots of yellow & pink

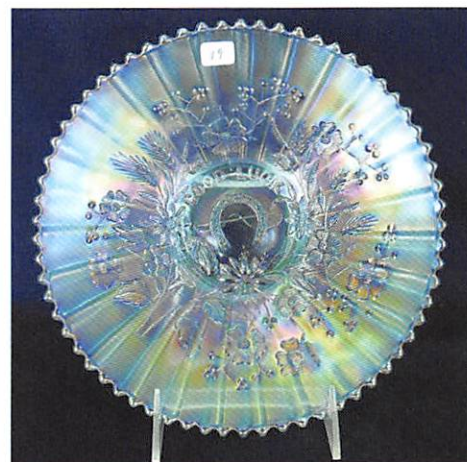
___ 16. M'burg Ohio Star 16" whimsey swung vase - green - fantastic radium irid., absolutely beautiful & rare, a top piece in the auction

___ 17. Cherry Chain 10" ruffled bowl - marigold - very pretty



___ 18. Good Luck 9" plate w/ ribbed back - ice green - not only extremely rare, absolutely beautiful

___ 19. Good Luck 9" plate w/ ribbed back - ice blue - another rare plate w/ great irid.!



___ 20. Good Luck 9" plate w/ribbed back - blue - electric & fantastic, a stunning plate

___ 21. Good Luck 9" plate w/BW back - horehound - as pretty as they get w/beautiful irid.

___ 22. Good Luck 9" plate w/ribbed back - green - another beautiful plate, many would call emerald

___ 23. Good Luck 9" plate w/ribbed back - purple - very pretty

___ 24. Good Luck 9" plate w/ribbed back - marigold - pretty, WOW, what a wonderful run of Good Lucks!

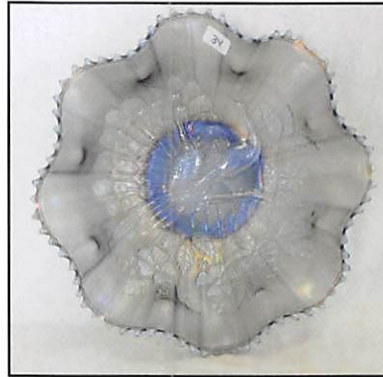
___ 25. M'burg Peacock at Urn chop plate - amethyst - super rare & beautiful plate, very few known, a great opportunity



___ 26. Persian Medallion 10" IC shaped bowl - blue - fantastic



___ 33. M'burg Whirling Leaves crimped edge ruffled bowl - green - radium & super, first of many odd shaped M'burg pieces coming up



___ 34. Peacocks ruffled bowl w/ribbed back - powder blue opal - super rare bowl & nice



___ 27. Stippled Peacocks PCE bowl w/ribbed back - aqua opal - fabulous irid. on this extremely rare bowl, especially when stippled, (was super hard to photo and is much nicer than pics)

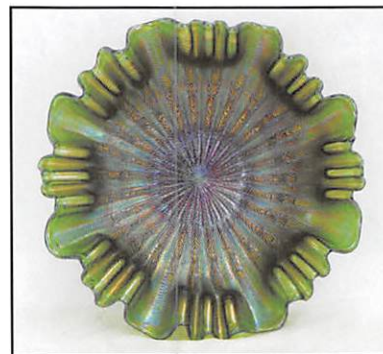
___ 35. Peacocks ruffled bowl w/ribbed back - smoke - super neat bowl in a true smoke color, pretty irid.



___ 36. Peacocks ruffled bowl w/ribbed back - aqua - another scarce color, very pretty

___ 37. Peacocks ruffled bowl w/ribbed back - ice green - very pretty

___ 28. Stork & Rushes w/Lattice Band ftd bonbon- marigold - I have never seen this before, did not know this existed! chip on base



example ___ 38. Fenton's Feathered Rays 3 in 1 edge bowl - green - extremely rare pattern w/less than a handful known, this one is super pretty with a few minor nicks on the edge



___ 29. Farmyard 8 ruffled bowl - purple - super rare & nice

___ 30. N's Thin Rib 10" vase - sapphire - pastel version and very pretty

___ 31. N's Thin Rib 9 1/2" vase - sapphire - pretty irid. on this vase

___ 32. Frolicking Bears whimsy ruffled hat shape - green - made from the ultra-rare tumbler, only one I have ever heard of, great



piece!! has minor peeling spot on edge but who cares?

___ 39. Lattice & Poinsettia ftd ruffled bowl w/ribbed back - aqua opal - an extreme rarity, highly desirable and nice



___ 41. Beaded Cable whimsy rose bowl - blue - this was never turned in but flared straight up, has pinpoint on top edge and roughness on one foot, super neat piece!



___ 42. M'burg Whirling Leaves square shaped crimped edge bowl - green - radium & nice

___ 43. M'burg Whirling Leaves square shaped crimped edge bowl - marigold - radium & beautiful



___ 44. Stippled Three Fruits 9" plate w/ ribbed back - lime green w/marigold overlay - absolutely super plate in this rare color!

___ 45. Stippled Three Fruits 9" plate w/ribbed back - horehound - fantastic irid. on another rare plate



___ 46. Stippled Three Fruits 9" plate w/ribbed back - purple - nice

___ 47. Circle Scroll 7" vase - purple - super



___ 48. Holly ruffled bowl - ice green - extremely rare color & super pretty, many have poor irid., this one does not

___ 49. Holly ruffled bowl - celeste blue - another beauty w/stretch irid., a dandy

___ 50. Holly ruffled bowl - blue opal - very, very pretty for this rare bowl

___ 51. Holly ruffled bowl - marigold on moonstone - also very pretty in a scarce color



___ 52. Diamond Rib 21" funeral vase - green - rare & pretty, has peeling effect on top of 3 points

___ 53. Diamond Rib 9" ruffled top jardinière - green - this has significant damage but is super neat, has cracks and one ruffle is damaged, a great shelf whimsy!

___ 54. Diamond Rib 16 1/2" funeral vase - marigold - a dandy, pretty & rare

___ 55. Diamond Rib 6 1/2" jardinière - amethyst - very rare & unusual to find piece

___ 56. M'burg Whirling Leaves tri-cornered crimped edge bowl - green - radium, nice & scarce



___ 57. M'burg Whirling Leaves tri-cornered crimped edge bowl - marigold - radium & super, probably the rarest color

___ 58. N's Peacock at Urn chop plate - ice green - a top Northwood rarity, another rare opportunity, yes, it is nice!



___ 59. Scroll Embossed 9" plate - purple - super

___ 60. Hearts & Flowers whimsy compote - white - another super cool whimsy, the top is flattened out and not ruffled





___ 61. Hearts & Flowers ruffled compote - marigold on custard - super pretty & very rare, as nice as they get

___ 62. Hearts & Flowers ruffled compote - green - a beauty for this scarce color

___ 63. Hearts & Flowers ruffled compote - aqua opal - nice

___ 68. Peacock at the Fountain 8 pc. punch set - marigold - dark, pretty
___ 69. Stag & Holly giant rose bowl - blue - very rare & super

___ 70. Garden Path Variant chop plate - purple - a Dugan classic that is absolutely beautiful, another WOW



___ 64. Butterfly & Berry water pitcher - blue - this is beautiful!



___ 71. Vintage IC shaped sauce - celeste blue - super pretty w/ stretchy irid., quite rare



___ 72. Leaf Chain 9" plate - green - it's wonderful! they usually don't look like this, a rare opportunity



___ 73. Leaf Chain 9" plate - blue - another beauty

___ 74. Leaf Chain 9" plate - marigold - dark, nice

___ 75. Leaf Chain 9" plate - pastel marigold - pretty w/lots of pinks and yellows



___ 65. Embroidered Mums PCE bowl w/ribbed back - sapphire - super rare color, highly desirable

___ 66. Embroidered Mums PCE bowl w/ ribbed back - blue - electric & nice, extremely rare in this color



___ 76. M'burg Peacock at Urn Mystery bowl - blue - super rare color, satin & pretty

___ 67. Peacock at the Fountain punch bowl & 6 cups - white - rare punch set, missing base



___ 77. Drapery Variant 9" vase - sapphire - pretty irid. on this scarce color

___ 78. Good Luck PCE bowl w/ribbed back - aqua opal - a fantastic bowl! super pretty, has typical webbing spots between points

___ 79. Good Luck PCE bowl w/ribbed back - purple - pretty

___ 80. Good Luck PCE bowl w/ribbed back - amethyst - pretty, many would call lavender

___ 81. M'burg Whirling Leaves crimped edge bowl - green - slightly egg shaped, neat shape w/fantastic radium irid.

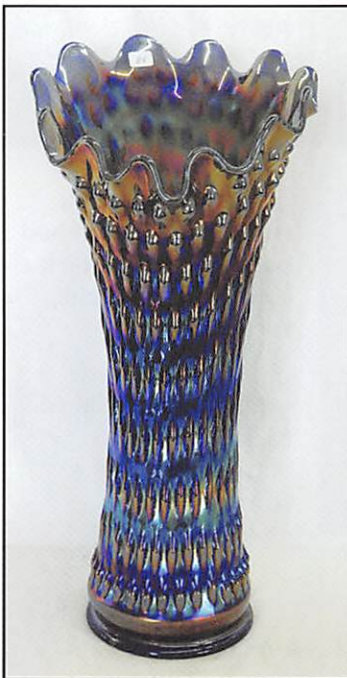
___ 82. M'burg Whirling Leaves crimped edge bowl - amethyst - slightly egg shaped, radium & pretty, a great pair



___ 83. Rustic 20" funeral vase w/plunger base - blue - super pretty & very scarce

___ 84. Rustic 21" funeral vase w/plunger base - amethyst - very tall for these, nice irid.

___ 85. Rustic 18" funeral vase w/plunger base - blue - very neat vase, color is beautiful, slight bruises on base



___ 86. Rose Show 9" plate - lime green opal - many call these ice green opal, not matter what, they are rare & beautiful

___ 87. Rose Show 9" plate - emerald green - rare color, nice, pinpoint on one rose

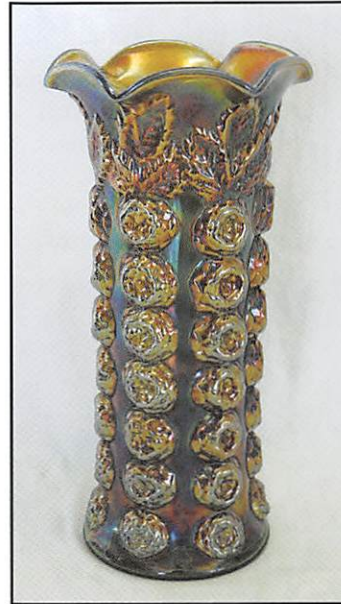
___ 88. Rose Show 9" plate - purple - nick on rose



___ 89. Rose Show 9" plate - blue - nice, chip on base

___ 90. Rose Show 9" plate - marigold - dark & super

___ 91. Rose Show 9" plate - marigold - pastel & nice



___ 92. M'burg Rose Columns vase - green - super pretty example, very rare & highly desirable

___ 93. Drapery 5" round berry sauce - white - rare piece, nice

___ 94. Embroidered Mums ruffled bowl w/ribbed back - lime green opal - extremely rare color, very few known, has the pigment in the glass like they all do



___ 95. Embroidered Mums ruffled bowl - aqua - rare color, nice

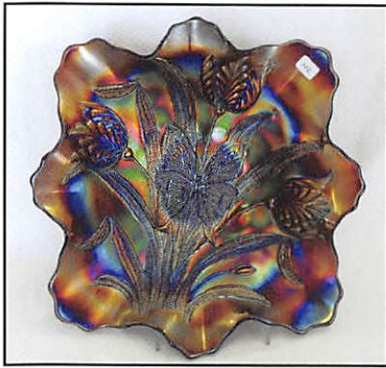
___ 96. Embroidered Mums ruffled bowl - lavender - super pretty

___ 97. Embroidered Mums ruffled bowl w/ribbed back - blue - electric, super



___ 98. Embroidered Mums ruffled bowl w/ribbed back - amethyst - super pretty

___ 99. Embroidered Mums ruffled bowl w/ribbed back - marigold - dark, nice



___ 100. Butterfly & Tulip ftd square shaped bowl - purple - a beauty for this collector's classic

___ 101. Peacock & Grape IC shaped bowl - peach opal - pretty example

___ 102. Peacock & Grape IC shaped bowl - amethyst - very pretty



___ 108. Stippled Three Fruits ruffled bowl w/ ribbed back - sapphire - another wonderful piece of glass

___ 109. Stippled Three Fruits ruffled bowl w/ ribbed back - white - very pretty example

___ 110. M'burg Peacock master berry bowl - green - radium, super

___ 111. M'burg Peacock master berry bowl - amethyst - radium & fantastic, this is a dandy!

___ 112. M'burg Peacock berry sauce - amethyst - radium, super

___ 113. Big Basketweave 9 1/2" vase - ice blue - very rare color, pretty

___ 114. Big Basketweave 9" vase - purple - super

___ 115. Big Basketweave 12" vase - lavender - super

___ 116. Orange Tree w/ Trunk 9" plate - yellow - very rare color & pretty, few opportunities to own a yellow piece of Carnival Glass

___ 117. Orange Tree w/ Trunk 9" plate - white - irid. is fantastic



___ 103. M'burg Wild Flower ruffled compote - marigold - radium & wonderful, a great Millersburg piece!

___ 104. N's Grape & Cable lg size ftd orange bowl - purple - very pretty



___ 105. M'burg Zig Zag square shaped crimped edge bowl - marigold - radium, dark & beautiful, rare



___ 106. Grapevine Lattice tankard water pitcher - purple - super pretty & scarce, beautiful

___ 107. Grapevine Lattice tankard water pitcher - marigold - nice



___ 118. Good Luck ruffled bowl w/ribbed back - ice blue - dark color w/pretty irid., rare piece

___ 119. Good Luck ruffled bowl w/ribbed back - aqua opal - butterscotch & nice, scarce



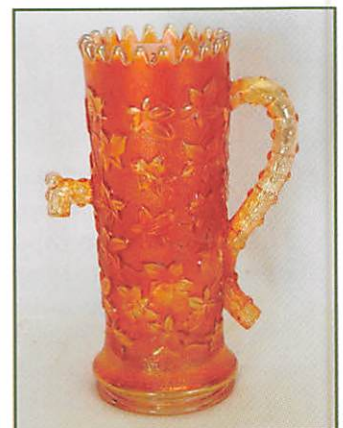
___ 120. Good Luck ruffled bowl w/BW back - horehound - very pretty for these, scarce

___ 121. Good Luck ruffled bowl w/ribbed back - green - pretty

___ 122. Good Luck ruffled bowl w/ribbed back - purple - very pretty

___ 123. Good Luck ruffled bowl w/ribbed back - blue - has electric highlights

___ 124. N's Town Pump - marigold - dark & pretty from top to bottom, scarce



- ___ 125. Stippled Singing Birds mug - green - very rare mug, not often stippled in this color
- ___ 126. Grape & Cable 8 pc. midsize punch set - marigold - super nice
- ___ 127. Grape & Cable small size round punch bowl & base - marigold - dark & super



___ 128. M'burg Hanging Cherries ruffled sauce - blue - rare color, has pretty satin irid.



___ 129. Poppy Show ruffled bowl - purple - very pretty, chip on base

___ 130. Poppy Show ruffled bowl - blue - scarce color, nice

___ 131. Poppy Show ruffled bowl - marigold - nice example

___ 132. Rustic 16" funeral vase - white - frosty & pretty, rare & desirable

___ 133. Rustic 17" funeral vase - green - super pretty, rare & desirable

___ 134. Rustic 17" funeral vase - marigold - tiny bruise on top edge of base

___ 135. M'burg Peacock crimped edge round bowl - green - radium - pretty, neat shape



___ 136. Fenton's Vintage 10" ftd whimsey chop plate - blue - extremely rare, made from the fernery

___ 137. Fenton's Vintage 10" ftd whimsey chop plate - amethyst - extremely rare, made from the fernery, spot of missing irid. on back of plate



___ 138. N's Good Luck prototype 9" plate w/ BW back - marigold - extremely rare, especially in the plate, believed to be only one or two known, similar pattern to the Jockey Club advertising piece, super nice

___ 139. Peacocks 9" plate w/ribbed back - blue - nice

___ 140. N's Stippled Rays deep ruffled bowl - ice blue - very rare bowl, not many of these around!

___ 141. N's Stippled Peacock at Urn ruffled bowl - marigold - made from IC bowl, scarce & pretty

___ 142. M'burg Whirling Leaves IC shaped bowl - green - radium & super, another neat bowl

___ 143. M'burg Whirling Leaves IC shaped bowl - marigold - radium & super also, may be the rarest color



___ 144. Wishbone & Spades chop plate - purple - very pretty example of this scarce plate

___ 145. Wishbone tri-cornered ftd bowl - green - scarce, small pinpoint on point



___ 146. Wishbone tri-cornered ftd bowl - marigold - also scarce & nice

___ 147. Peacock Tail breakfast sugar bowl - green - only one I have seen, very cool piece



___ 148. Imperial Flute water pitcher & 3 tumblers - blue - extremely rare pitcher in this color, tumblers all have minor nicks



___ 149. Imperial Flute 6 pc. water set - purple - super pretty set, 2 tumblers have minor nicks

___ 150. Stippled Good Luck PCE bowl w/ribbed back - blue - very nice

___ 151. Stippled Good Luck PCE bowl w/ribbed back - marigold - dark, nice

___ 152. Stippled Good Luck PCE bowl w/ribbed back - pastel marigold - pretty



___ 153. Wishbone 10" ruffled bowl - sapphire - very rare color for these & super pretty

___ 154. Dugan's Paneled Tree Trunk 8 1/2" squatty vase - purple - this vase is extremely rare,

has large crack from top to bottom, great shelf piece

___ 155. Tree Trunk elephant's foot 12" vase - custard with blue stain - very rare, one ruffled broken, not iridized

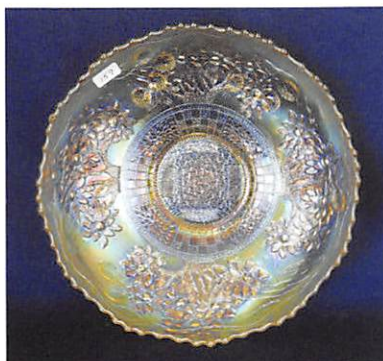
___ 156. Lustre Rose whimsey flared tumbler - powder blue - neat whimsey, has hard to see crack around base

___ 157. Tree Trunk 19" funeral vase - green - maybe the prettiest green vase I have seen, has crack near top edge

___ 158. Tree Trunk 19" funeral vase - purple - very scarce, very nice



___ 159. Orange Tree w/ Trunk IC shaped bowl - yellow - another rare yellow piece w/pretty irid.



___ 160. Orange Tree IC shaped bowl - green - super pretty, very scarce to find a green pretty

___ 161. Orange Tree IC shaped bowl - blue - pretty

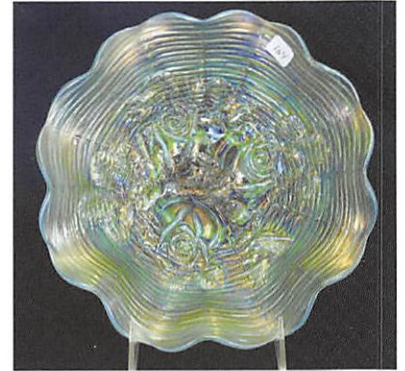
___ 162. Orange Tree IC shaped bowl - white - nice

___ 163. Orange Tree IC shaped bowl - marigold - pretty

___ 164. Rose Show ruffled bowl - lime green opal - very hard to find bowl & nice

___ 165. Rose Show ruffled bowl - green - super pretty example, scarce color

___ 166. Rose Show ruffled bowl - aqua opal - has butterscotch irid., base has opaque color to



___ 167. Stork & Rushes ruffled punch bowl & base - marigold - rare to find these ruffled, nice

___ 168. Captive Rose 9" plate - green - super beautiful

___ 169. Captive Rose 9" plate - amethyst - maybe as nice as we have sold

___ 170. Captive Rose 9" plate - blue - a stunning example

___ 171. M'burg Zig Zag tri-cornered crimped edge bowl - marigold - radium & nice, rare

___ 172. Cherry Chain 10" IC shaped bowl - blue - fantastic!

___ 173. N's Banded Grape & Cable banana boat - pearlized custard - rare

___ 174. M'burg Ohio Star vase - marigold - rare vase, pretty

___ 175. Fenton's Peacock at Urn 9" plate - blue - electric & nice

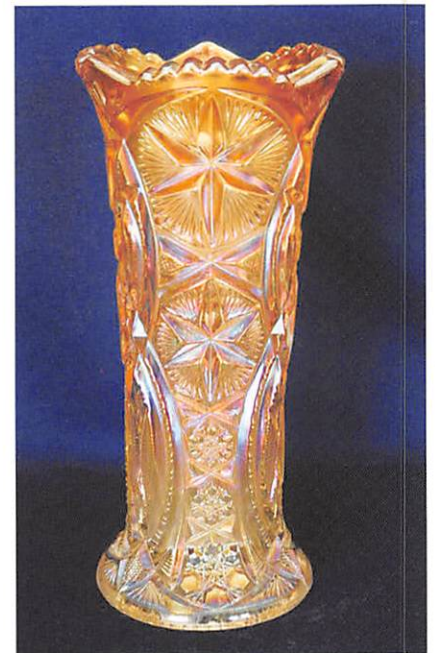
___ 176. Fenton's Peacock at Urn 9" plate - marigold - dark, nice

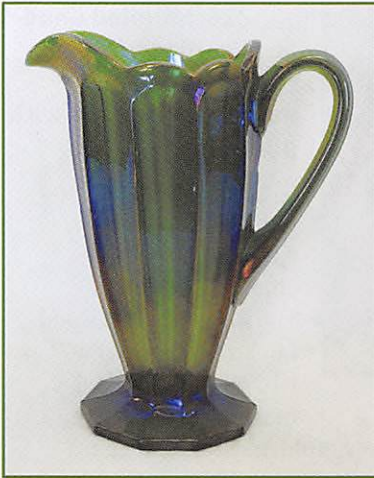
___ 177. Grape & Cable dresser tray - green - pretty

___ 178. Grape & Cable pin tray - green - pretty

___ 179. Grape & Cable powder jar - green - super nice example

___ 180. Pair of Grape & Cable cologne bottles - green - nice matching pair





- ___ 181. Grape & Cable hatpin holder - green - very pretty
- ___ 182. Holly 9" plate - blue - super pretty, has "G&P" etching on face
- ___ 183. Unusual Flute type 9" tankard pitcher - green - fantastic irid., you would have to call this emerald, we have sold a marigold version of this which was the only other one we have seen, a great pitcher!!

- ___ 198. Ripple 15" vase - smoke - has 4" base, pretty



- ___ 199. Butterfly & Berry whimsy 3 3/4" pinched in vase - marigold - made from the tumbler, super neat, has large chip on base

- ___ 200. Fenton's Peacock at Urn ruffled bowl - green - very pretty
- ___ 201. Fenton's Peacock at Urn ruffled bowl - blue - unusual radium type irid.

- ___ 202. Wild Berry powder jar - marigold - has N.Y. souvenir adv. that we can't quite read
- ___ 203. M'burg Zig Zag crimped edge ruffled bowl - green - radium & very pretty, scarce

- ___ 184. Panther ftd ruffled master berry bowl - blue - pretty

- ___ 185. Dandelion Knights Templar mug - ice blue - super pretty for these

- ___ 186. Dandelion Knights Templar mug - ice green - very pretty irid. for these



- ___ 187. Dandelion mug - marigold - dark, nice

- ___ 188. Grape & Cable fernery - pearalized custard - very rare item

- ___ 189. Grape & Cable fernery - custard w/blue stain - not iridized, quite rare

- ___ 190. Stippled Good Luck 9" plate w/ribbed back - blue - scarce, pretty

- ___ 191. Stippled Good Luck 9" plate w/ribbed back - marigold - pretty, nick on top cleat of horseshoe

- ___ 192. Beaded Bullseye 10 1/2" vase - purple

- ___ 193. Leaf Chain 6 ruffled bowl - teal green - very nice

- ___ 194. Leaf Chain 8 ruffled bowl - blue - very pretty

- ___ 195. Ten Mums CRE bowl - blue - nice

- ___ 196. M'burg Many Stars 3 in 1 edge bowl w/6 pt star - marigold - radium, dark & pretty, scarce



- ___ 204. Memphis 8 pc. punch set - white - very rare & desirable

- ___ 205. Memphis punch bowl & base - green - scarce

- ___ 206. Miniature Chesterfield salt - marigold - has Imperial Cross Mark on base



- ___ 197. N's Peacock at the Fountain fruit bowl - renninger blue - very rare color, very pretty, not many opportunities for these



- ___ 207. Stippled Grape & Cable ruffled bowl w/ribbed back - ice green - rare bowl w/very pretty irid.

- ___ 208. Stippled Grape & Cable Variant ruffled bowl w/ribbed back - sapphire - scarce color, pretty

- ___ 209. Stippled Grape & Cable Variant ruffled

bowl w/ribbed back - green - very pretty

- ___ 210. Stippled Grape & Cable Variant ruffled bowl w/ribbed back - marigold - dark & fantastic

- ___ 211. Morning Glory 16 1/2" funeral vase - purple - super pretty

- ___ 212. M'burg Little Stars 10" IC shaped bowl - green - very hard to find bowl, satin, tiny pinpoint on base
- ___ 213. Vintage 9" ruffled bowl - marigold - dark, pretty
- ___ 214. E.A. Hudson Co. 6" plate - amethyst - very pretty, scarce
- ___ 215. Scroll Embossed deep ruffled bowl - emerald green - scarce
- ___ 216. Diamond Lace 7 pc. water set - purple - super pretty set



___ **217. Good Luck prototype PCE bowl w/ BW back - marigold - another great rarity, only know of a couple of these, again, similar to the Jockey Club**

- ___ 218. Vintage whimsy ftd ruffled bowl - amethyst - made from the fernery, nice
- ___ 219. Sailboat ruffled sauce - brick red

___ 220. Fenton's Grape & Cable centerpiece bowl - blue - made from the fruit bowl, missing irid. in center, rare shape



___ **221. M'burg Nesting Swan square shaped crimped edge bowl - green - radium, a dandy piece**

- ___ 222. Ski Star tri-cornered dome ftd bowl - peach opal
- ___ 223. Stippled Good Luck ruffled bowl w/ribbed back - blue - electric & nice
- ___ 224. Stippled Good Luck ruffled bowl w/ribbed back - green - rare color to find stippled, pretty



___ **225. Stippled Good Luck ruffled bowl w/ ribbed back - marigold - covered with pink irid.**

- ___ 226. Stippled Good Luck ruffled bowl w/ ribbed back - marigold
- ___ 227. Stippled Good Luck ruffled bowl w/ ribbed back - pastel marigold - very nice

- ___ 228. Tree Trunk 10" vase - sapphire - scarce, nice
- ___ 229. Tree Trunk 10" vase - renninger blue - rare color, has manufacture open bubble on base
- ___ 230. Tree Trunk 12" vase - green - pretty
- ___ 231. Fenton's Grape & Cable ruffled ftd fruit bowl w/ Persian Medallion interior - green - nice

___ 232. Fenton's Grape & Cable 5 pc. fruit set - marigold - all have Persian Medallion interior, master bowl is super

___ **233. Stippled Strawberry 9" plate w/BW back - green - scarce, nice**



- ___ 234. M'burg Grape Wreath Variant 10" tri-cornered bowl - marigold - radium, dark & pretty, rare bowl
- ___ 235. Carnival Hobstar butter dish - purple - minor pinpoint on knob
- ___ 236. M'burg Peacock at Urn 3 in 1 edge Mystery bowl - green - radium, nice



___ 237. Vintage 9" IC shaped bowl - amethyst - super radium type irid.

___ 238. Leaf & Beads rose bowl w/smooth top - pearalized custard - very scarce

___ **239. Singing Birds water pitcher - green - very pretty**

___ 240. Singing Birds 7 pc. water set - marigold - 2 tumblers have nicks

___ 241. Stippled Three Fruits PCE bowl w/ribbed back - green - scarce color, nice

___ 242. M'burg Rosalind 9" IC shaped bowl - green - satin, very nice, scarce size

- ___ 243. Drapery 8" vase - aqua - scarce color, has tiny nick on one foot
- ___ 244. Drapery 7" vase - marigold
- ___ 245. Stippled Grape & Cable 9" plate w/BW back - green - scarce
- ___ 246. Stippled Grape & Cable 9" plate w/ribbed back - marigold - scarce plate, dark, nice
- ___ 247. M'burg Nesting Swan ruffled bowl - green - radium, pretty
- ___ 248. M'burg Nesting Swan ruffled bowl - marigold - radium, pretty
- ___ 249. M'burg Four Pillars 13 1/2" vase - green - has star in base



___ 250. Wishbone ftd ruffled bowl - sapphire - super pretty for this rare color

- ___ 251. Wishbone ftd ruffled bowl - horehound - another hard color to find, pretty
- ___ 252. Wishbone ftd ruffled bowl - green - nice
- ___ 253. Wishbone ftd ruffled bowl - marigold - nice



___ 254. Orange Tree whimsy ruffled punch bowl & base - blue - extremely rare to find in this shape, very small eraser size bruise on inside of bowl

___ 255. Orange Tree ruffled punch bowl & base - blue - very nice

___ 256. Stippled Peacocks ruffled bowl w/ ribbed back - marigold - very pretty

___ 257. Peacock & Grape 9" plate - blue - pretty example, quite scarce



- ___ 258. Peacock & Grape 9" plate - marigold - pastel & pretty
- ___ 259. M'burg Holly Whirl ruffled bowl - green - radium & super, small chip on backside of point
- ___ 260. N's Thin Rib midsize 14" vase - blue - super nice
- ___ 261. N's Thin Rib midsize 11 1/2" vase - marigold - short & squatty for these
- ___ 262. Ten Mums 10" ruffled bowl - green - very pretty, small rub on sharp point
- ___ 263. M'burg Courthouse ruffled bowl - amethyst - radium, nice



___ 264. Persian Medallion 9" plate - green - very rare plate & pretty, not more than a handful known

___ 265. Persian Medallion 9" plate - white - another rare & pretty plate

___ 266. Windmill 8" round bowl - emerald green - scarce color, pretty

- ___ 267. N's Stippled Rays 10" ruffled bowl - purple
- ___ 268. Stippled Grape & Cable PCE bowl w/ribbed back - lime green - rare color & pretty, pinpoint on point
- ___ 269. Little Flowers large size deep round bowl - blue - super pretty
- ___ 270. Coin Dot 3 in 1 edge 9" bowl - peach opal - very scarce

___ 271. Heart & Vine 9" plate - blue - has pretty green irid.

- ___ 272. Heart & Vine 9" plate - amethyst - scarce
- ___ 273. Fruits & Flowers bonbon w/plain back - purple - very unusual, they normally have basket weave on the outside



___ 274. M'burg Gay Nineties tumbler - amethyst - very rare & nice



___ 275. Pearly Dots ruffled compote - marigold on milk glass

___ 276. Memphis 8 pc. fruit bowl set - purple - nice - one cup has chip on base

___ 277. M'burg Primrose deep round bowl - green - radium, nice

- ___ 278. Four Seventy Four milk pitcher - lavender - scarce color
- ___ 279. Peacock & Grape ruffled bowl - green - pretty
- ___ 280. Peacock & Grape ruffled bowl - blue - pretty
- ___ 281. Peacock & Grape ruffled bowl - marigold

___ 282. Blackberry Block tankard water pitcher w/1 tumbler - green - scarce color, nice



___ 283. Grape & Cable candlesticks - marigold - nice



___ 284. Concord 9" plate - green - a fantastic example, beautiful

___ 285. Concord 9" plate - amethyst - very scarce

___ 286. Diamond Point 9 1/2" vase - renninger blue - rare color for these, not often seen

___ 287. Diamond Point 9" vase - marigold - super

___ 288. Orange Tree hatpin holder - blue - normal pinpoint on foot

___ 289. Peacocks PCE bowl w/ribbed back - green - scarce, nice

___ 290. M'burg Strawberry Wreath 7" tri-cornered bowl - marigold - radium, nice

___ 291. Persian Garden fruit bowl top - purple - fantastic irid., someone needs to find a pretty base for this

___ 292. Hearts & Flowers PCE bowl w/ribbed back - lime green - scarce color, nice

___ 293. Hearts & Flowers PCE bowl w/ribbed back - custard - not Carnival Glass



___ 294. Wide Panel 9" round bowl - red - Stretch, has "Hostetters Center Square Greencastle, PA " original partial paper label

___ 295. Ripple 8 1/2" vase - purple - has 3 3/8" base, super

___ 296. Grape & Cable Variant 9" plate w/BW back - green - super pretty

___ 297. Grape & Cable Variant 9" plate w/BW back - olive green - scarce color

___ 298. Milady tankard water pitcher - marigold - scarce, nice

___ 299. M'burg Peacock at Urn 3 in 1 edge 10" bowl - green - radium, small chips on base, chip on edge

___ 300. Stippled Peacocks 9" plate w/ribbed back - marigold - pretty

___ 301. Hearts & Flowers ruffled bowl w/ribbed back - purple - also very pretty

___ 302. M'burg Holly Whirl deep round bowl - green - radium, nice

___ 303. Basketweave Open Edge ruffled basket - red

___ 304. Holly IC shaped bowl - green

___ 305. Three Fruits Medallion spt ftd ruffled bowl - purple - pretty

___ 306. Rose Show Variant 9" plate - marigold - very pretty, minor rub on point

___ 307. Banded Grape & Cable turned in centerpiece bowl - pearlized custard - very rare piece, not many around

___ 308. M'burg Peacock 10" crimped edge ruffled bowl - green - radium, nice



___ 309. Poppy Show 9" plate - marigold - always in demand

___ 310. Rose Show Variant ruffled bowl - blue - very pretty, hard to find

___ 311. Imperial Grape 6" plate - amber - pretty

___ 312. Peacock at the Fountain water pitcher - white - pretty irid., scarce

___ 313. Springtime spooner - purple - super pretty

___ 314. Old Rose Distilling / Stippled Grape & Cable Variant 9" plate w/ribbed back - green - very pretty for these

___ 315. Lot of 3 Four Flowers round saucers - purple - all 3 pretty

___ 316. M'burg Little Stars 7" ruffled bowl - amethyst - satin, nice





___ 317. Cherry Chain chop plate - marigold - dark & super, hard to find

___ 318. Persian Medallion 3 in 1 edge 10" bowl - green - pretty

___ 319. Peacock at the Fountain creamer - purple - nice

___ 320. N's Stippled Peacock at Urn master IC bowl - marigold - fantastic, dark pumpkin irid.



___ 321. M'burg Peacock IC shaped sauce - green - radium, very nice



___ 322. Thistle 9" plate - green - super pretty, rare plate

___ 323. Thistle 9" plate - amethyst - nice, rare plate

___ 324. M'burg Holly Sprig 8" IC shaped bowl - green - radium, nice

___ 325. M'burg Trout & Fly ruffled bowl - lavender - satin, fantastic! fish is completely covered with irid., WOW!! one of Jim's favorites (Photo right)

___ 326. Memphis large punch bowl & base - crystal - not Carnival Glass, has tiny nick on base of bowl

___ 327. Memphis 11" square shaped bowl - crystal - not Carnival Glass



___ 328. Memphis 12" chop plate - crystal - not Carnival Glass

___ 329. Memphis 12" turned in stemmed rose bowl - crystal - not Carnival Glass

___ 330. Memphis 12" spittoon shaped stemmed rose bowl - crystal - not Carnival Glass, has some lime deposit inside bowl

___ 331. Memphis toothpick - crystal - not Carnival Glass

___ 332. M'burg Ohio Star tulip top large punch bowl & base - crystal - not Carnival Glass

___ 333. Diamond Point bushel basket - crystal - has yellow stain, not Carnival Glass

___ 334. Diamond Point bushel basket - crystal - not Carnival

___ 335. Oriental Poppy 7 pc. tankard water set - blue w/gold decoration - not Carnival Glass

___ 336. Oriental Poppy 7 pc. tankard water set - green w/gold decoration - not Carnival Glass

___ 337. Absentee Oriental Poppy tankard water pitcher - crystal - not Carnival Glass, this is the Northwood blank

___ 338. Twigs 7" vase - vaseline opal - not Carnival Glass

___ 339. Twigs 7" vase - white opal - not Carnival Glass

___ 340. Twigs 4 1/2" vase - vaseline opal - not Carnival Glass

___ 341. Twigs 4 1/2" vase - green opal - not Carnival Glass

___ 342. Twigs 4 1/2" vase - blue opal - not Carnival Glass

___ 343. Twigs 4 1/2" vase - white opal - not Carnival Glass

___ 344. N's Bushel Basket - green opal - not Carnival Glass

___ 345. Twigs 4" pinched in vase - vaseline opal - not Carnival Glass

___ 346. Twigs 4" pinched in vase - blue opal - not Carnival

___ 347. Twigs 4" pinched in vase - white opal - not Carnival

___ 348. Stippled & Banded Grape & Cable orange bowl - custard w/nutmeg stain - not Carnival Glass

___ 349. Stippled Grape & Cable ruffled fruit bowl - custard w/nutmeg stain - not Carnival Glass

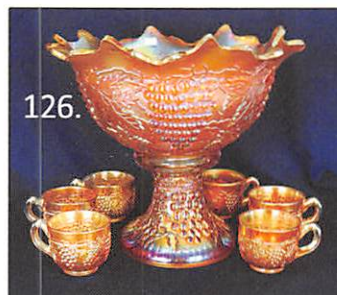
___ 350. Stippled & Banded Grape & Cable dresser tray - custard w/nutmeg stain - not Carnival Glass

___ 351. Stippled & Banded Grape & Cable hatpin holder - custard w/nutmeg stain - not Carnival Glass

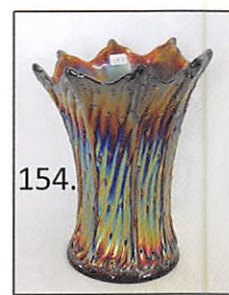
Carnival Glass Online Only 2021 Auction

SAT., APRIL 24 9:30 A.M.

COLUMBIA CLUB
551 SOUTH TAFT AVE
MASON CITY, IOWA 5040



126.



154.

The Reyman Collection

Seeck Auctions

Jim & Jan Seeck
641-424-1116



182.

165.

169.

140.

57.

40.

42.

50.

51.

36.

13.

53.

113.

84.

30.

156.

208.

239.

326.

214.