

# Keystone Carnival Glass Auction 2020

May 9th 2020 at 10:00AM EST

This will be a LIVE on-line Auction

( see instructions below on how to participate in this WONDERFUL auction)

## Chautauqua Lake Auction Center

58 East Main St Westfield, NY 14787

937-548-7835 • info@matthewwrodaauctions.com

\*\*\*\*\*Mail, E-Mail, Phone and Absentee Bids Policy:\*\*\*\*\*

**\*Absentee Bidding:** There are several options to participate in this LIVE-Internet Only On-Line Auction.

**A.>** Absentee bidding is available via our "Auction Flex" bidding system.

**B.>** Call in bids to our office and we will enter for you.

**C.>** Email or Mail your bids to us via USPS and we will enter them for you.

**D.>** Text bids to 937-459-9556.

**\*\*Live Phone Bidding:** You can do "live phone" bids on items of estimated value of **\$300.00 or more.**

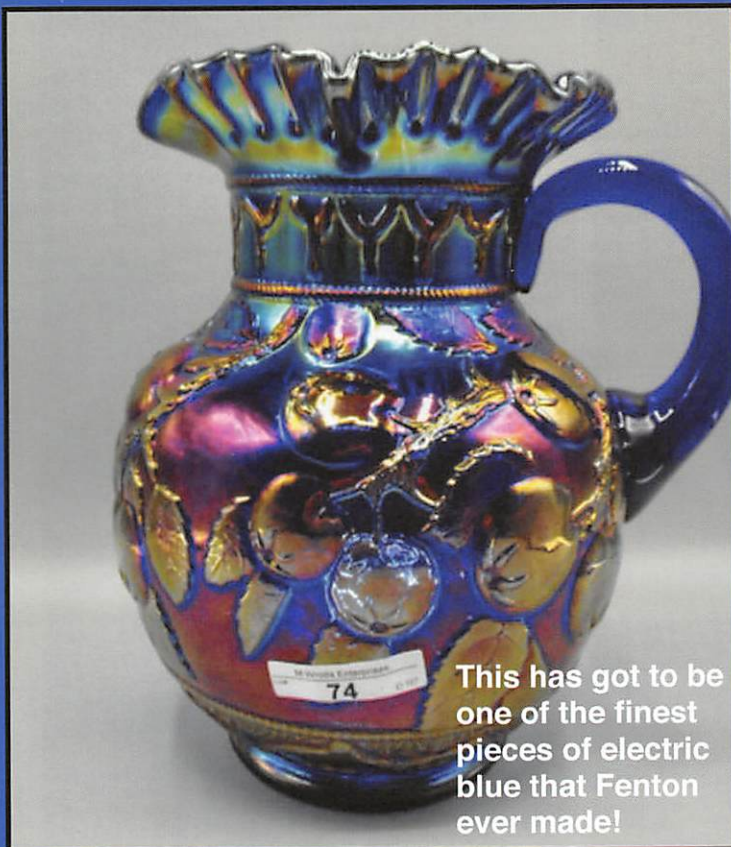
**\*\*\*LIVE internet bidding: This auction will be available on PROXIBID and AUCTION FLEX / HI-BID for LIVE internet bidding. So yes, we will have 2 LIVE INTERNET bidding platforms going at the same time!** Remember, Proxibid does carry a fee of 5% which goes to Proxibid.

**Shipping:** There is a \$7.00, per successful bid, convenience fee. Items will be shipped as fast as we can, However please be patient. Remember we now have to ship ALL items for these auctions. That will take time.

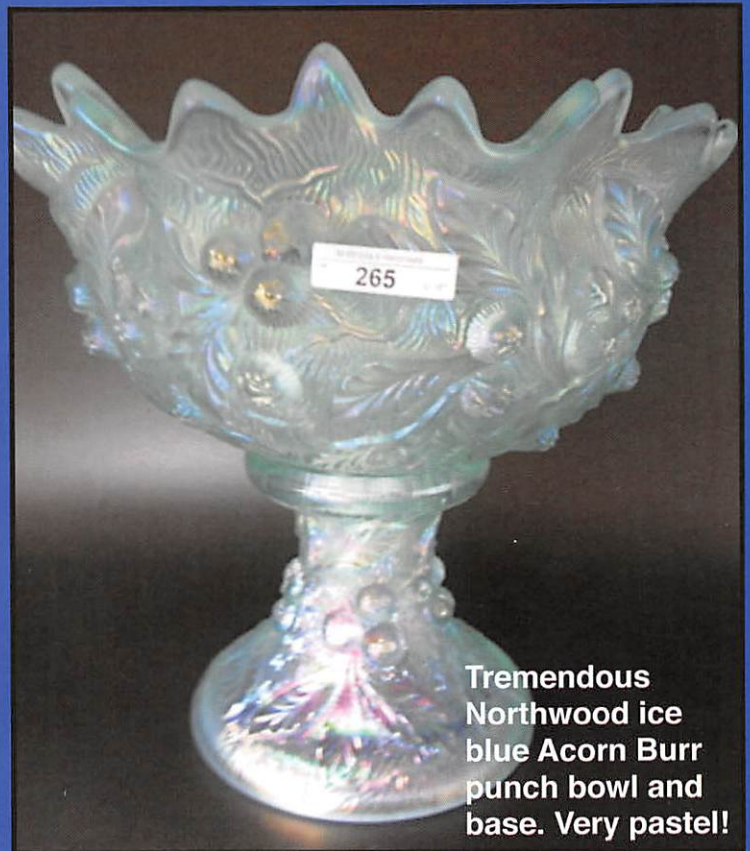
**Terms & Conditions:** Cash, Checks. Visa/ MC & Discover with a 3% clerking fee. We reserve the right to withdraw any damaged item from the auction before the bidding starts.

### Matthew Wroda Auctions, LLC

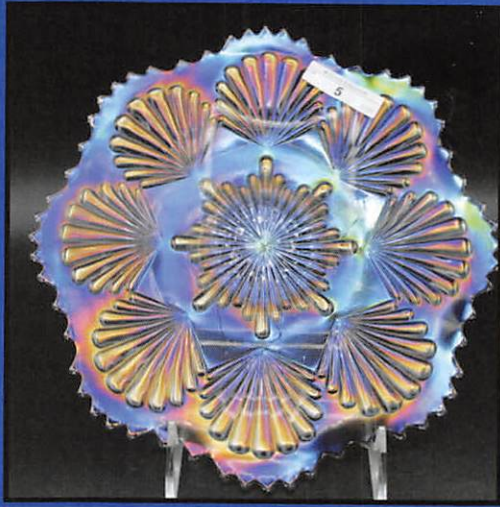
Jim Wroda, Matthew Wroda & Mike Baker Auctioneers



This has got to be one of the finest pieces of electric blue that Fenton ever made!



Tremendous Northwood ice blue Acorn Burr punch bowl and base. Very pastel!



- 1 Nwood green Grape & Cable hatpin holder
- 2 Nwood purple Grape & Cable hatpin holder
- 3 Millersburg 9" radium green Mayan ICS bowl
- 4 Imp 9" ELEC PURPLE Shell & Sand plate- STUNNING
- 5 Imp 9" smoke Shell plate. AWESOME PLATE!
- 6 Imp amber Pansy pickle dish- Pretty colors
- 7 Imp BLASTING PURPLE Pansy pickle dish. Can't imagine a prettier one!
- 8 9.5" elec purple Four Flowers Variant plate. Way better than normal
- 9 Nwood elec blue G&C bon bon
- 10 Dugan 9" BLUE Round Up plate. Scarce
- 11 Cambridge purple Inverted Strawberry complete table set. Chip on finial of butter dish.
- 12 Nwood celeste blue stretch covered candy dish
- 13 Nwood vaseline stretch covered candy dish
- 14 Imperial 8" Pastel marigold Heavy Grape plate-WOW!
- 15 imp 8.5" Amber Heavy Grape plate
- 16 Six Plums hatpin
- 17 Top O Morning hatpin
- 18 Big Butterfly hatpin
- 19 Dugan Constellation compote- Amethyst
- 20 Dugan Constellation compote- elec purple
- 21 Dugan Constellation compote- pastel marigold
- 22 Dugan Constellation compote- frosty white
- 23 Nwood blue Poppy Pickle dish. Nice color
- 24 Dugan 6" elec purple Cherries low ruffled bowl
- 25 Dugan 6" elec purple Petal & Fan CRE plate. WOW
- 26 Nwood 9" elec blue Peacocks stippled plate This is one heck of a plate!
- 27 Fenton 8.5" pumpkin marigold Concord bowl
- 28 Millersburg satin green Leaf & Little Flowers round compote
- 29 Millersburg radium green Leaf & Little Flowers round compote
- 30 Millersburg radium green Leaf & Little Flowers ruffled compote
- 31 Millersburg radium purple Leaf & Little Flowers round compote
- 32 Millersburg radium purple Leaf & Little Flowers ruffled compote
- 33 Millersburg radium marigold Leaf & Little Flowers round compote
- 34 Imperial elec purple Small Scroll Embossed ruffle compote. BEAUTY!
- 35 Imperial elec purple Small Scroll Embossed ruffle compote. BEAUTY w/ bright irid!
- 36 Imp 8" elec purple Shell & Sand deep ruffled bowl.
- 37 Imp 8" elec purple Heavy Grape plate. KILLER!
- 38 Imp SMOKE Poinsettia milk pitcher- ELECTRIC!
- 39 Imp marigold Poinsettia milk pitcher. BEAUTIFUL
- 40 Imperial elec purple Six Sided candlesticks. OUTSTANDING!
- 41 Nwood 9" elec purple Good Luck PCE bowl You will like this one!
- 42 Nwood BLUE Diamond Points ft'd basket. RARE and very pretty
- 43 Nwood elec blue Leaf & Beads rosebowl
- 44 Nwood 9" green Good Luck PCE bowl.
- 45 Australian 5" black amy. Emu ruffled sauce.
- 46 Fenton RED Vintage fern. STUNNING!! I have never seen one like this before!
- 47 Dugan 9" PO Round Up plate
- 48 Dugan 9" radium mari Round Up 3-1 edge bowl WOW!!
- 49 Dugan 12" frosty white Persian Garden deep fruit bowl ( flat base)
- 50 Dugan 12" peach opal Persian Garden deep fruit ruffled bowl w/ flat base- RARE BOWL!
- 51 Fostoria lavender Brocaded Oak water pitcher EXTREMELY RARE with just very few known to exist! First I have seen in this color. lavender with gold rim. great color
- 52 Fenton enameled Iris diagonal band 5 pc tankard set. Scarce set.
- 53 Nwood 13" elec purple Tree Trunk mid-size vase Great color
- 54 Nwood 10" AO Tree Trunk vase. Beautiful multi- color all the way down!
- 55 Cambridge green Inverted Thistle large ruffled compote. VERY RARE COMPOTE!!
- 56 Fenton 21" purple Rustic funeral vase w/ plunger base. MASSIVE and VERY PRETTY! A LOOKER!
- 57 Millersburg purple Multi-Fruits and Flowers 2 pc punch set. Scarce
- 58 2 Elec purple Loganberry vase. Well matched set! Selling as 2 times money for these beauties! First time I know of that a matched set will sell together. WOW!
- 59 Nwood 9" AO Stippled 3 Fruits plate. No wear to this wonderful plate! Scarce
- 60 Millersburg 10" radium green Zig Zag 3-1 edge bowl
- 61 Fenton 9" marigold Peacock & Grape plate Wonderful example
- 62 Nwood 8" ice blue Poppy Show bowl- Scarce
- 63 Dugan 9" PO Ski Star HG dome ft'd plate Super color!
- 64 Dugan 9" Petals dome ft'd CRE plate- Scarce
- 65 Fenton 9" elec green Captive Rose plate. WOW!!
- 66 Fenton 11" green Rustic mid-size vase
- 67 Nwood 9" green Good Luck PCE bowl w/ beautiful multi-color irid
- 68 Nwood 9" green Good Luck ruffled bowl- Dark color
- 69 Nwood purple G&C hatpin holder- pretty one
- 70 Nwood purple G&C punch base- nice of you need one
- 71 Imperial mari 474 punch set w/ 2 cups.
- 72 Cambridge marigold Inverted Strawberry 5pc berry set. Signed Near Cut. Scarce set
- 73 Nwood 9" purple Good Luck PCE bowl w/ nice multi-color irid.
- 74 Fenton ELEC BLUE Apple Tree water pitcher. ABSOLUTELY one of the BEST blue water pitchers out there by ANY maker. Just STUNNING! BUY IT!! I have not seen anything close to this one.
- 75 Nwood 9" Persian blue Peacocks ruffled bowl. VERY RARE> Only one I have heard of.
- 76 Nwood 9" elec green Strawberry plate w/ plain back
- 77 Nwood 9" DARK PUMPKIN MARI Strawberry plate w/ plain back
- 78 Dugan 8.5" elec purple Apple Blossom Twigs low ICS bowl
- 79 Millersburg 6" BRIGHT RADIUM MARI Blackberry Wreath FLAT plate. WOW!!!!
- 80 Nwood green Daisy & Plume rosebowl w/ berry int. Beautiful multi-color irid all over. WAY better than normal!
- 81 Imp 9.5" bright smoke Acanthus chop plate. WOW

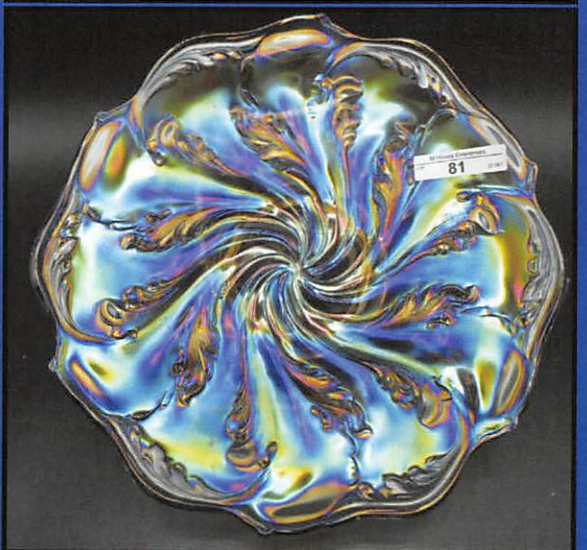


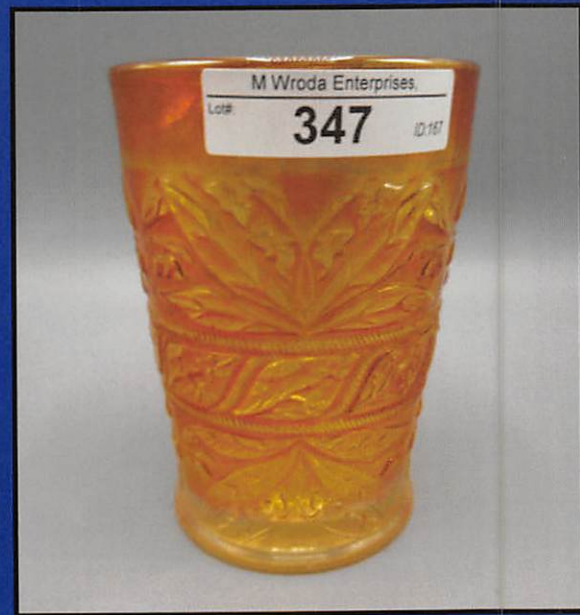
Emerald Green and it GLOWS!!



- 82 Imp 9.5" bright marigold Acanthus chop plate.
- 83 Nwood 8.5" purple Strawberry PCS bowl w/ BWB
- 84 Nwood 9" pastel mari Strawberry plate. AWESOME!
- 85 Nwood 9" green G&C stippled plate- Old Rose
- 86 Nwood 9" lt amy Peacocks plate, bit deeper than normal..Some might call lavender
- 87 Nwood 9" elec blue Peacocks plate- BEAUTIFUL!
- 88 Nwood 9" elec blue 3 Frutis stippled plate. Another beauty!
- 89 Dugan 9.5" purple Heavy Grape deep ruffled bowl. Scarce
- 90 Dugan 5" purple Heavy Grape deep ruffled bowl. RARE
- 91 Mburg 5.5" rad purple Grape Wreath vari ICS bowl
- 92 Mburg 7" rad purple Grape Wreath ruffled crimped edge bowl
- 93 Mburg 10" rad purple Primrose ruffled bowl
- 94 West blue opal smooth rays stemmed compote
- 95 West blue opal Daisy Wreath 8" bowl
- 96 West peach opal Daisy Wreath 8.5" flared bowl
- 97 Fenton blue Orange Tree loving cup
- 98 Fenton purple Orange Tree loving cup
- 99 Fenton emerald green Orange Tree hat pin holder OK.. So this has a crack in the side of it, But I had to put it in the auction. Color is awesome!
- 100 Fenton blue Orange Tree hatpin holder
- 101 Fenton darl mari Orange Tree powder jar
- 102 Fenton bright mari Heart & Trees ft'd 9" bowl
- 103 Fenton 9.5" mari 10 Mums ruffled bowl
- 104 Fenton 6" dark amber / amberina Blackberry Spray JIP hat
- 105 Fenton 8.5" blue Comet 3-1 edge bowl
- 106 Nwood 7" purple Wild Strawberry HG plate w/ elec hi-lights
- 107 Nwood 9" green Fruits and Flowers bowl- Scarce
- 108 Nwood 8.5" blue Embroidered Mums bowl
- 109 Nwood 8.5" pumpkin mari 3 frutis stippled bowl
- 110 Nwood 9" elec purple 3 Fruits Med. ft'd bowl. Nice one
- 111 Imp mari Poinsettia milk pitcher
- 112 Mburg 6" green Blackberry Wreath 3-1 edge bowl
- 113 Mburg purple Holly bon bon
- 114 Fenton 8" radium blue Holly ICS bowl- COOL!!
- 115 Dugan 9" PO Soutache dome ft'd plate This is a PERFECT plate! You will know what I mean when you see it.
- 116 Dugan 5" Heavy PO Cherries deep sauce. RARE
- 117 Nwood 8" green Wishbone ft'd bowl w/ blue irid. Nice
- 118 Fenton blue Persian Medallion hair receiver
- 119 Nwood DARK MARI Daisy & Plume ft'd rosebowl. tiny flake on 1 leg.
- 120 Nwood 8.5" BRIGHT MARI Good Luck ruffled bowl
- 121 Nwood 8.5" AO 3 Fruits stippled ft'd bowl lots opal, on pastel side
- 122 Nwood 8.5" ice blue 3 Frutis stippled ft'd bowl. Has a bit of ash in foot or something. Awesome pastel colors
- 123 Fenton 7" RED Stippled Rays ruffled bowl
- 124 Dugan 10" purple Cherries ruffled bowl- pushing electric.
- 125 Fenton RED 5" Holly Hat- LOOKS RED! IS RED!
- 126 Dugan pastel marigold Heavy Iris JIP hat made from tumbler- SUPER!
- 127 Dugan purple Daisy Web JIP hat w/ CRE- RARE SHAPE
- 128 Dugan pastel marigold Circle Scroll JIP hat made from tumbler- Beautiful irid!
- 129 Imperial smoke stretch candleholder w/ tray
- 130 Imperial purple stretch candleholder w/ tray
- 131 Imperial marigold stretch candleholder w/ tray
- 132 Nwood elec blue Poppy Pickle dish. SWEET!
- 133 Nwood elec purple Poppy Pickle dish. BRIGHT!!
- 134 Nwood elec green Poppy Pickle dish. Another beauty
- 135 US Glass marigold 4.5" Palm Beach "Hyacinth" top squatty vase
- 136 US Glass marigold 6" Palm Beach square pinched edge bowl
- 137 Nwood 8.5" pumpkin marigold Rose Show ruffled bowl DARK!
- 138 Nwood 9" electric green Strawberry PCE bowl w/ plain back. HOT!
- 139 Dugan BLUE Leaf Rays nappy. RARE COLOR
- 140 Nwood ice green Peacock at Fountain compote. Scarce
- 141 Millersburg radium green Peacock Tail compote.
- 142 Nwood AO Leaf & Beads rosebowl. Loaded w/ opal
- 143 Imperial elec purple Grape wine decanter w/ stopper. STUNNING! Nothing common about this one!
- 144 Fenton 6" Waterlily ft'd sauce- tangerine opal
- 145 Fenton 6" Waterlily ft'd sauce- reverse amberina ( red-yellow-red)
- 146 Fenton 6" Waterlily ft'd sauce- vaseline opal
- 147 Fenton 6" Waterlily ft'd sauce- aqua
- 148 Fenton 6" Waterlily ft'd sauce- powder blue
- 149 Fenton 6" Waterlily ft'd sauce- smoke
- 150 Fenton 6" Waterlily ft'd sauce- pumpkin marigold
- 151 Fenton 6" Waterlily ft'd sauce- royal blue
- 152 Fenton 6" Waterlily ft'd sauce- cobalt
- 153 Fenton 6" Waterlily ft'd sauce- forest green
- 154 Fenton 6" Waterlily ft'd sauce- rich amber
- 155 Fenton 6" Waterlily ft'd sauce- vaseline
- 156 Fenton 6" Panther ft'd sauce pale white- VERY RARE
- 157 Dugan 8.5" celeste blue Double Stem Rose dome ft'd bowl. GREAT COLOR FOR THIS
- 158 Nwood purple Wishbone single lily epergne. Well matched
- 159 Fenton RED Stippled Rays sugar bowl- RARE
- 160 Nwood emerald green Peacock at Fountain ft'd fruit bowl- SUPER RARE AND SUPER PRETTY!
- 161 Nwood marigold Peacock at Fountain fruit bowl LOADED WITH COLOR!
- 162 Dugan lavender Grape Delight rosebowl.
- 163 Fenton 9" vaseline opal Dragon & Lotus 8 ruffled bowl. Scarce
- 164 Fenton 7.5" elec blue Parkersburg Elks 1914 plate Bright irid.
- 165 Nwood 9" bright green Greek Key ruffled bowl
- 166 Fenton RED Balckberry Spray JIP CRE hat.
- 167 Nwood 9" butterscotch AO Peacocks ruffled bowl. DARK!
- 168 Fenton 6" Amber Opal Blackberry Spray ruffled hat
- 169 Fenton 6" vaseline opal Blackberry Spray ruffled hat- RARE COLOR!
- 170 Fenton vaseline Blackberry Spray square hat- Scarce
- 171 Dugan pastel mari Amaryllis deep nut dish WOW!
- 172 Dugan pastel mari Amaryllis stemmed plate. Scarce
- 173 Dugan purple Amaryllis tri-corner nut dish
- 174 Nwood elec purple G&C large fruit bowl- SWEET!
- 175 Nwood dark marigold G&C centerpiece bowl w/ points turned in. you will like this one!
- 176 Dugan BLUE Beaded Shell mug- RARE
- 177 Dugan frosty white Beaded Shell mug- RARE
- 178 Dugan peach opal Fisherman's mug- RARE LOADED!!!

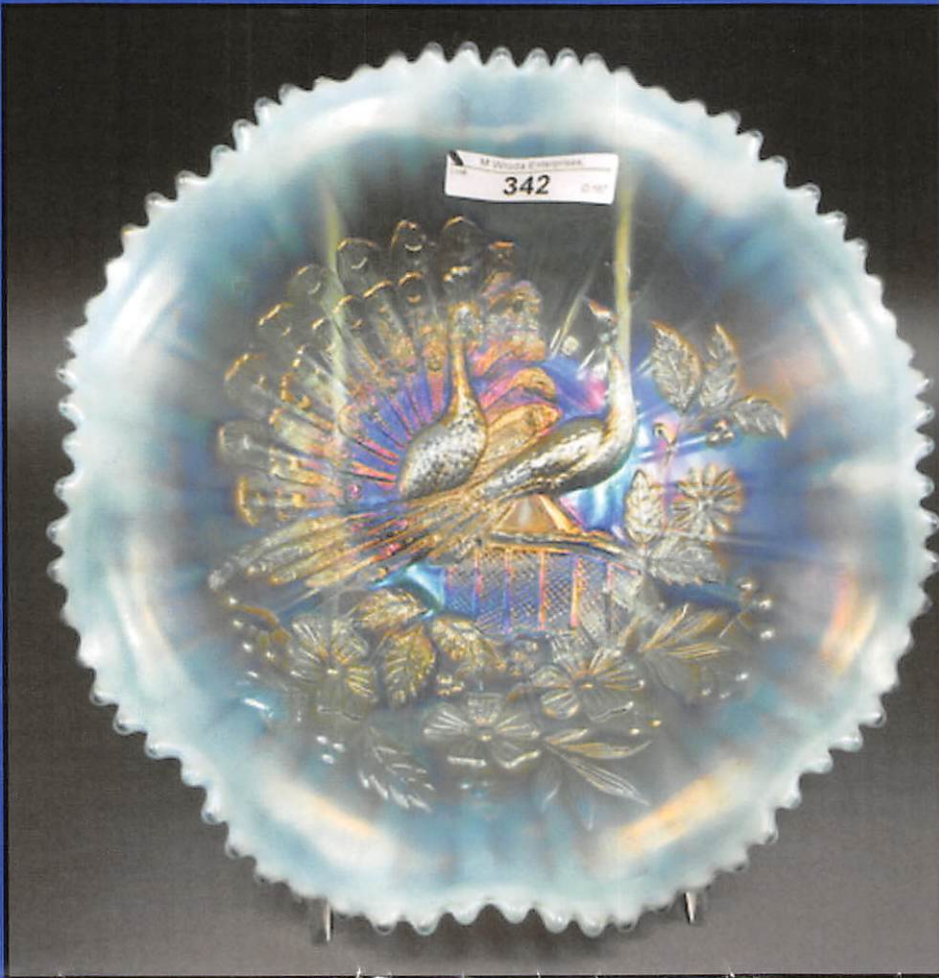








- 179 Dugan pumpkin marigold Fisherman's mug.
- 180 Nwood elec elec blue round Bushel Basket. KILLER
- 181 Nwood dark mari Daisy & Drape flared vase,
- 182 Dugan 7" elec purple Circle Scroll vase. VHTF!
- 183 Nwood 9" cobalt Drapery Variant vase w/ multi- color irid
- 184 Imperial 11" elec purple Freefold vase
- 185 Imperial 11" bright marigold Freefold vase
- 186 Dugan 6.5" elec purple Circle Scroll vase/ WOW!
- 187 Imperial 12" elec purple Ripple vase- Always a hit
- 188 Fenton 9" VASELINE Thistle bowl. RARE COLOR
- 189 Nwood 9" elec purple Peacocks PCE bowl
- 190 Nwood 9" ice green Peacocks PCE bowl. Scarce
- 191 Nwood 9" elec purple Nippon PCE bowl. Even color!
- 192 Dugan 11" paech opal 4 Flowers chop plate w/ plain back.
- 193 Nwood 9" bright mari Heart & Flower plate
- 194 Imperial SMOKE Fashion round jelly compote- RARE Stunning irid!
- 195 Imperial MARIGOLD Fashion round jelly compote VERY RARE Wonderful color! TINY little flick on "knob" of stem. Who cares.. go find another one..
- 196 Millersburg 10" green Hanging Cherrie ICS bowl w Hobnail back. Scarce
- 197 Millersburg 10" mari Hanging Cherrie ruffled bowl w/Hobnail back. Scarce & pretty!
- 198 Millersburg 10" mari Seaweed 3-1 edge bowl. BRIGHT
- 199 Millersburg 10' green Nesting Swans bowl
- 200 Dugan BLASTING ELEC PURPLE Christmas Compote. If you have waited for "The One", the wait is over!!
- 201 Dugan bright marigold Christmas Compote- Another stunner! RARE- much harder to find than purple.
- 202 Millersburg 10" mari Fleur de Lys bowl-
- 203 Mburg 10" Green Hanging Cherries ICS bowl- NICE
- 204 Millersburg 8" purple Hanging Cherries low ICS bowl. Excellent color for satin
- 205 Millerburg radium purple Leaf Little Flowers round compote
- 206 Millersburg radium purple Leaf & Little Flowers ruffled compote.
- 207 Millersburg purple Gay Ninties tumbler- RARE
- 208 Fenton 9" RED Holly 8 ruffled bowl. Scarce
- 209 Fenton 9" blue opal Holly 8 ruffled bowl. RARE
- 210 Fenton BLUE Butterfly Berry hatpin holder
- 211 Fenton Marigold Butterfly Berry hatpin holder
- 212 Imperial 5" mari File corsett shape vase w/ ruffle top.
- 213 Imperial elec smoke Corn bottle
- 214 Dugan elec purple Heavy Iris tumbler. WOW
- 215 Nwood AO Fine Cut & Roses rosebowl. Scarce Always sought after
- 216 Nwood ice green Wishbone ft'd bowl. RARE
- 217 Nwood pumpkin marigold Wishbone ft'd bowl. SMOKIN'
- 218 Nwood elec green Wishbone ft'd bowl. WOW!
- 219 Imperail mari 474 mini cordial. VERY RARE
- 220 Fenton 8.5" AO Vintage 3-1 edge bowl.
- 221 Fenton 6" purple Little Fishes ft'd sauce- Scarce
- 222 Fenton 6" sapphire Little Fishes ft'd sauce- VHTF! ( little darker than powder blue)
- 223 Imperial Grape 6" elec purple plate. BLASTING!
- 224 West 6" blue opal Hobstar & Fruit sauce
- 225 West 6" peach opal Hobstar & Fruit sauce
- 226 West PO mini basket w/ wire handle- Intaglio Flower- RARE
- 227 Fenton 4" Kittens 4 sided plate in aqua
- 228 Imperial elec purple Scroll Embossed round miniature compote
- 229 Imperial elec purple Scroll Embossed ruffled miniature compote
- 230 Dugan 9" elec purple Cherries 3-1 edge ft'd bowl- LOVE IT!
- 231 Dugan 9" elec purple Cherries tri-corner CRE edge ft'd bowl- SUPER NICE!
- 232 Dugan 9" elec purple Cherries 10 ruffled ft'd bowl- Another wonderful bowl
- 233 Nwood AO Double Loop Chalice.
- 234 Nwood elec purple Double Loop Chalice. Scarce color
- 235 Imperial smoke Rococco vase
- 236 Imperial marigold Rococco vase
- 237 Dugan 6" ice lavender Persian Garden ICS bowl.
- 238 Dugan 6" PO Persian Garden plate- opal to collar
- 239 Dugan 6" frosty white Garden Path vari. plate.
- 240 Dugan 6" purple Petal & Fan CRE plate
- 241 Dugan 6" purple Cherries CRE plate. Wonderful multi-color irid.
- 242 Fenton 6" mari Little Flowers plate. Scarce
- 243 Nwood 9.5" elec purple Stippled Rays PCE bowl.
- 244 Millersburg 6" radium mari Holly Sprig CRE ruffled bowl. super cute!
- 245 West green Daisy Squares CRE oval top compote. Scarce
- 246 Dugan 6" PO Garden Path vari. deep ruffled bowl
- 247 Dugan 5" PO Garden Path vari. deep round bowl
- 248 Millersburg radium purple and mari Peacock at Urn 5" berry bowls
- 249 Imperial 12" elec purple Beaded Bullseye vase- WOW
- 250 Imperial smoke 2 handled fan vase w/ interior swirl.
- 251 Fenton marigold Strawberry Scroll tumbler.. NICE!
- 252 Dugan 7" marigold Nautilus vase. Scarce- Radium
- 253 Nwood 7" Aqua Opal Drapery vase Butterscotch and LOADED w/ opal
- 254 US Glass 12" mari Western Thistle vase EXTREMELY RARE! WOW!
- 255 Fenton 9" marigold Leaf Chain plate
- 256 EXTREMELY RARE Nwood 9" BLUE Embroidered Mums plate. Only 2 known. None have ever sold at public auction. Great color!
- 257 Nwood 9" ice green Embroidered Mums plate. Scarce
- 258 Nwood green Blossom Time compote.
- 259 Nwood 10" aqua opal Tree Trunk vase. Possible epoxy on collar base...
- 260 Nwood 10" purple Tree Trunk vase
- 261 Millersburg 11" purple Hobnail Swirl vase. Scarce
- 262 Nwood elec green Grape and Cable hatpin holder NICE!!!
- 263 Fenton 8" green Coral ICS bowl. RARE and very nice
- 264 3 Nwood ice blue Acorn Burr punch cups
- 265 Nwood ice blue Acorn Burr punch bowl and base. AWESOME! & RARE
- 266 Nwood green Wide Panel 4 lily epergne. This has great color not normally seen on this.
- 267 Nwood 9" purple Good Luck plate w/ BWB
- 268 Nwood 9" sapphire Grape and Cable Stippled plate. WOW! THIS IS HOT!!!
- 269 Dugan 10" purple Farm Yard 3-1 edge bowl. Has beautiful gold and blue irid. Scarce bowl.!
- 270 Imperial EMERALD GREEN Homestead chop plate. A VERY OMPRESSIVE PIECE OF IMPERIAL. GET IT!



- 271 Imperial Grape emerald green water carafe. Anotehr STUNNING piece of Imperial! 2 KILLERS in a row!
- 272 Nwood ice green G&C banana boat. Scarce
- 273 Fenton green Butterfly & Berry master berry bowl. Scarce color
- 274 Nwood purple Peacock at Fountain 7pc water set.
- 275 Nwood purple G&C large compote.
- 276 Imperial 9 elec purple Double Dutch ft'd bowl
- 277 Dugan 10" marigold Butterfly & Tulip ft'd bowl w/ 2 points up
- 278 2 Cambridge green Near Cut cologne bottles No Stoppers
- 279 Nwood purple Peacock at Fountain 7pc berry set. Nice color
- 280 Nwood purple Peacock at Fountain butterdish
- 281 Nwood purple Peacock at Fountain sugar
- 282 Nwood 9" marigold 3 Fruits stippled plate
- 283 Nwood purple Peacock at Fountain punch bowl and base.
- 284 Nwood Ao Fine Cut & Roses candy dish
- 285 Nwood AO Heart & Flower compote
- 286 Nwood blue Heart & Flower compote w/ elec hi-light
- 287 Fenton 21.75" blue Rustic funeral vase. This is a MASSIVE vase w/ huge 9.5" mouth!! WOWER!!
- 288 Fenton 18.5" blue Rustic funeral vase. Nice color for this
- 289 Nwood 13.5" marigold Thin Rib vase
- 290 Nwood 13.5" purple Thin Rib vase
- 291 Imperial 11" elec purple Beaded Bullseye vase
- 292 Imperial 11" elec purple Free Fold vase
- 293 Fenton 15" blue Rustic vase w/ CRE top.
- 294 Nwood AO LEaf & Beads rosebowl.
- 295 Nwood ice green Corn vase w/ plain base
- 296 Nwood marigold Corn vase w/ plain base.
- 297 Fenton blue Orange Tree hatpin holder
- 298 Nwood elec blue G&C bon bon.
- 299 Nwood pastel AO 3 Fruits bon bon
- 300 Nwood pastel elec blue 3 Fruits bon bon
- 301 Dugan elec purple Leaf Rays nappy.. You'll say why is this in a convention auction...Then you will see it.....
- 302 Nwood Springtime purple spooner
- 303 Nwood Springtime purple covered sugar
- 304 Nwood purple Ivy Town Cup
- 305 2 Fenton marigold 4 Kittens TP's
- 306 Imperial 7" elec purple Morning Glory vase
- 307 Nwood 7" green Tree Trunk squatty vase
- 308 Nwood 10.5" green Leaf Columns vase. NICE
- 309 Nwood 9" ice blue Nippon PCE bowl- Dark IB, BWback
- 310 Nwood 9" frosty white Nippon PCE bowl, BW back
- 311 Fenton 9" purple Holly plate. Scarce
- 312 Fenton 9" green Holly plate. Scarce
- 313 Fenton 9" blue Holly plate.
- 314 Nwood 10" dark mari Peacock at Urn MIC bowl.
- 315 Fenton 5.5" cobalt OE round hat. Scarce
- 316 Fenton 6" cherry red OE JIP hat.
- 317 Fenton 5" ice blue OE ruffled hat
- 318 Fenton 5" white OE ruffled hat, nice and frosty
- 319 Fenton 6" green OE 2 sided up hat
- 320 Fenton 6" lavender OE 2 sided up hat
- 321 Fenton 6" red OE 2 sided up hat
- 322 Fenton 6" ice green OE 2 sided up hat
- 323 Dugan 6" purple Circle Scroll tri-corner hat. Scarce
- 324 Dugan 5" marigold Circle Scroll ruffled hat
- 325 Imperial 9" elec smoke Acanthus deep ruffled bowl
- 326 Imperial Smoke Grape 6" compote
- 327 Imperial Lt amy Grape 6" compote
- 328 Imperial 6.5" elec purple Morning Glory vase- NICE
- 329 Imperial elec purple Grape goblet etched 1912
- 330 Nwood 11" elec purple Thin Rib vase Pretty for this
- 331 Dugan elec purple Big Basketweave Basket.
- 332 Nwood 9" green Stippled Rays ruffled bowl Very nice for a green one!
- 333 Nwood 9" green Wishbone PCE bowl w/ BWB
- 334 Nwood bright green Fern compote. WOW!
- 335 Nwood green Wild Rose nut bowl- points out
- 336 Nwood elec purple 8.5" ft'd 3 Fruits bowl.
- 337 KILLER Nwood 8.5" elec blue Good Luck ruffled bowl One of the nicest out there!
- 338 Fenton 9" blue Dragon & Strawberry ruffled bowl. Always sought after- good color!
- 339 Fenton 6" red Holly 2 side hat.
- 340 Imperial 9" elec purple Pansy ruffled bowl. Another killer color bowl!
- 341 Dugan BLASTING ELEC PURPLE Many Fruits 10 pc punch set. All I can say is BUY IT!! WOW WOW WOW!!!
- 342 RARE Nwood 8.5" ice blue opal Peacocks bowl. This is one HESS of a bowl!! WOW!
- 343 Imperial elec purple Cone & Tie tumbler- HOT LOT!
- 344 Nwood aqua opal Grape & Cable punch cup. RARE
- 345 Dugan purple Harvest Flower tumbler- RARE
- 346 Imp elec purple Chatelaine tumbler- RARE
- 347 Fenton bright marigold Lily of the Valley tumbler
- 348 Fenton white Blackberry Block tumbler
- 349 Imperial mari Diamond Lace Tumbler- VERY RARE!!
- 350 Nwood 8.5" aqua opal Good Luck bowl. nice dark rich color.
- 351 Nwood 9" bright elec purple Peacocks plate. SUPER!
- 352 Nwood 8.5" elec purple Peacocks ruffled bowl. WOW!
- 353 Nwood 8.5" pumpkin mari Peacocks ruffled bowl. WONDERFUL BOWL!
- 354 Fenton 8.5" red/ amberina holly ICS bowl. Has some yellow in base. Awesome bowl though.
- 355 KILLER Nwood 9" elec purple Grape & Cable low ruffled bowl. BEAUTIFUL!!! Thanks for attending todays auction! We hope you got lots of wonderful glass!! Be safe going home and we will see you at ACGA in June.

CHAUTAUQUA LAKE AUCTION CENTER  
58 EAST MAIN ST  
WESTFIELD, NY 14787

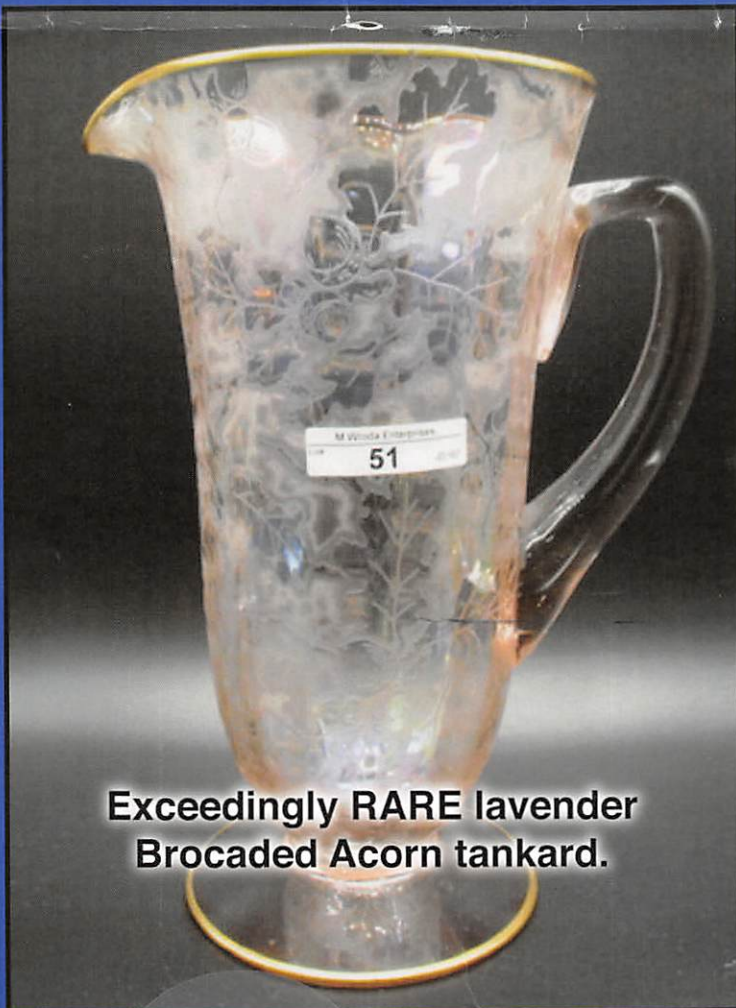
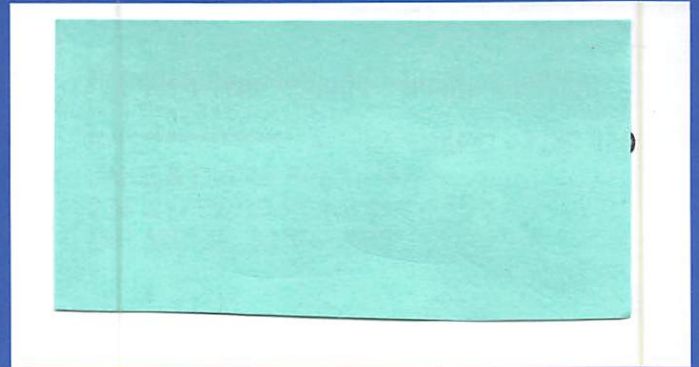
937-548-7835  
info@matthewwrodauctions.com

PRESORTED  
FIRST CLASS MAIL  
U.S. POSTAGE  
**PAID**  
CELINA, OH  
PERMIT NO. 99

**CARNIVAL GLASS AUCTION  
MAY 9TH 2020 AT  
10:00AM EST**

**This is a LIVE online only auction**

**www.matthewwrodauctions.com**



**Exceedingly RARE lavender  
Brocaded Acorn tankard.**

