

Burns Auction Service

TAMPA BAY CARNIVAL GLASS CLUB 2020 CONVENTION AUCTIONS

This will be a two day auction event!

February 7th & 8th, 2020

Friday, February 7th @ 1:30 pm (Preview 12:00 Noon - 1:30 pm) Lots 1-150

Saturday, February 8th @ 9:30 am (Preview 7-9:30 am) Lots 151-400

DOLPHIN BEACH RESORT | ST. PETE BEACH, FL

It's that Time Again! The Tampa Bay Carnival Glass Club Convention and Auction! TBCGC Convention starts on Wed. February 5th and runs through Saturday the 8th. This convention always provides great education, good food and friendly faces. Are you Sick of the cold weather? The Dolphin beach Resort hotel is nestled right on St. Pete Beach. Burns Auction Service is Proud to Present the Carnival Glass Collection of Dave and Donna Gilbert of Decorah, IA. There is plenty of Beautiful Carnival Glass for Your Bidding Pleasure including some Rare one of kinds, with approx 400 Pieces. Friday Auction Lots 1-150, Saturday Auction 151-400. Please make your Convention & Hotel Reservations and Come Join us for the Auctions, You won't be disappointed. Hope to see you there!

PUBLIC WELCOME

Friday, February 7th @ 1:30 PM (Preview 12:00 Noon - 1:30 PM) Lots 1 - 150

Saturday, February 8th @ 9:30 AM (Preview 7:00 AM -9:30 AM) Lots 151-400

Dolphin Beach Resort | 727-360-7011
4900 Gulf Blvd. – St. Pete Beach, FL
www.dolphinbeach.com



ABSENTEE BID POLICY

Absentee/ Phone Bids are Gladly Accepted. Either by placing bids through our website or Contacting Our Office at 503.756.2629 or 407.592.6552. Can't Attend? We also will have online live Bidding through HiBid.Com Visit tomburnsauctions.hibid.com for live Internet bidding. If you choose to use this service a 14% buyer's premium will apply to ONLINE LIVE BIDDING ONLY. (There is NO Buyers Premium for in house, Absentee or Phone Bids) This Feature allows you to bid right along with the auction as it is being conducted. Please refer to our website for all terms & Conditions of this sale and internet sales.

LIVE PHONE BIDDING

Please be sure to submit your phone bid request early. Due to limited Space, We Cannot Accept Phone Bids with a Pre- Auction Estimate below \$400.00. All Phone Bids Must Be Submitted by Thursday February 6th 2020, 9 pm EST

TERMS AND CONDITION OF SALE

Cash, Pre-Approved Checks, Visa, MasterCard, Discover & American Express Accepted. A 4% Buyers Premium will apply to all credit Card Purchases, With Exception of Cash or Check. A 7% sales tax will apply unless you have sales tax re sale certificate and copy, No Exceptions. All Statements Made the Day of Sale will Take Precedence Over any and All Printed Material. All Items are Being Sold without Guarantee or Warranty Applied, Regardless of Statements Made by Auctioneer or Staff. Auction Company is Not Responsible for any Accidents, Thefts, Breakage, or Sold Items. Burns Auction Service Reserves the Right to Withdraw any Property at any Time before and During Actual Sale. All Sales are Final Once and Item Leaves Auction Location!

PLEASE VISIT OUR WEBSITE FOR COMPLETE PRINTABLE LISTING

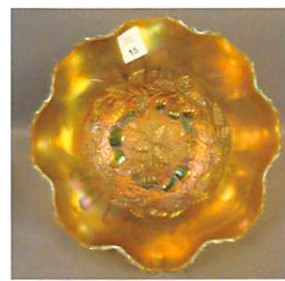
and Photos of All Items to be Sold!
www.tomburnsauctions.com

PUBLIC WELCOME!

Debra Jo Burns - Auctioneer 503.756.2629
Florida license # AU2640
Thomas J Burns - Auctioneer 407.592.6552
Florida License # AU3768



10



15



25



60



75



85



131



155



157



227



229



230



291



292



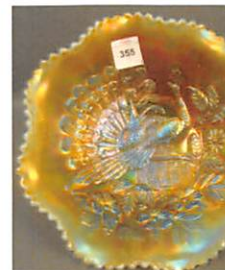
295



340



345



355

Tampa Bay Carnival Glass Club Convention

Friday Feb. 7, & Saturday Feb. 8, 2020

Day 1: Lots 1-150

- | | | | |
|---------------------|-------------------------------------------------------------------------------------------------------------------------------|---------------------|------------------------------------------------------------------------------------------------------------------------------------------|
| ___ 1. | Red HOACGA 7 Pc. Whiskey Set. (From 1976/77.) | ___ 24. | Northwood Ice Green 3 Fruits Domed Ftd Bowl. (Ruffled with Basketweave Exterior.) |
| ___ 2. | 1977 Red HOACGA Hatpin Holder. | ___ 25. | NORTHWOOD ICE GREEN OPAL ROSE SHOW PLATE. (STUNNING BEAUTY!) CHIPS ON ROSE |
| ___ 3. | 1980 Ice Green HOACGA Hatpin Holder. | ___ 26. | NORTHWOOD LIME ICE GREEN ROSE SHOW PLATE. (ANOTHER BEAUTY!) |
| ___ 4. | 1981 Red HOACGA Candle lamp. | ___ 27. | NORTHWOOD ICE BLUE ROSE SHOW PLATE. (ABSOLUTELY BEAUTIFUL EXAMPLE!) |
| ___ 5. | NORTHWOOD ICE BLUE GRAPE ARBOR 5 PC. TANKARD SET. (FROSTY AND NICE IRIDESCENCE.) | ___ 28. | Northwood White Rose Show Plate. (Very Scarce and Nice.) |
| ___ 6. | Northwood White Grape Arbor 7 Pc. Tankard Set. (Nice and Frosty with Nice Iridescence. One Tumbler Has Chip on Base as Seen.) | ___ 29. | NORTHWOOD GREEN ROSE SHOW PLATE. (NICE IRIDESCENCE. VERY TOUGH TO FIND.) |
| ___ 7. | Northwood Dark Marigold Grape Arbor 7 Pc. Tankard Set. (Nice Color and Iridescence. One Tumbler Has Nick on Rim.) | ___ 30. | Northwood Blue Rose Show Plate. (Very Scarce and Desirable.) |
| ___ 8. | Northwood Purple Oriental Poppy 7 Pc. Tankard Set. (Nice Multi Iridescence.) | ___ 31. | NORTHWOOD DARK MARIGOLD ROSE SHOW PLATE. (BEAUTIFUL EXAMPLE.) |
| ___ 9. | Northwood Dark Marigold Dandelion Tankard Pitcher. (Nice Iridescence.) | ___ 32. | NORTHWOOD AQUA OPAL ROSE SHOW RUFFLED BOWL. (NICE PASTEL EXAMPLE.) |
| <u>3750</u> ___ 10. | NORTHWOOD WHITE WISTERIA WHIMSEY BANK. (EXTREMELY RARE MADE FROM TUMBLER. ONLY ONE KNOWN. HAS CHIP ON BASE.) | <u>250</u> ___ 33. | NORTHWOOD AQUA OPAL ROSE SHOW BOWL. (DIFFERENT EXAMPLE. HAS BLUE OPAL RIM BUT AQUA BASE COLOR.) |
| ___ 11. | Northwood Blue Opal Holly Master Berry Bowl. (Non-Iridized and Very Scarce.) | ___ 34. | Northwood Ice Blue Rose Show Bowl. (Very Pretty.) |
| ___ 12. | Northwood Blue Opal Leaf & Beads 3/1 Edge Bowl. (Domed Footed. Non-Iridized and Scarce.) | ___ 35. | Northwood White Rose Show Bowl. (Scarce Item.) |
| ___ 13. | Northwood Blue Opal 3 Fruits Medallion Bowl. (Stippled Ftd. Ruffled Bowl. Non-Iridized.) | ___ 36. | Northwood Blue Opal Rose Show Ruffled Bowl. (Non-Iridized.) |
| ___ 14. | Northwood Ice Green Fruits & Flowers Ruffled Bowl. (Has Basketweave Exterior. Scarce with Nice Iridescence.) | <u>2700</u> ___ 37. | NORTHWOOD GREEN ROSE SHOW RUFFLED BOWL. (ABOVE AVERAGE IRIDESCENCE. REALLY NICE.) 652 |
| <u>265</u> ___ 15. | NORTHWOOD IGO THREE FRUITS MEDALLION STIPPLED BOWL. (RUFFLED AND FTD. HAS MARIGOLD OVERLAY.) | ___ 38. | Northwood Blue Rose Show Ruffled Bowl. (Nice Color and Iridescence.) |
| ___ 16. | Northwood Aqua Opal 3 Fruits Medallion Stippled Bowl. (Ftd. and Ruffled W/ Plain Edge.) | ___ 39. | NORTHWOOD DARK MARIGOLD ROSE SHOW RUFFLED BOWL. (BEAUTIFUL ABOVE AVERAGE IRIDESCENCE.) |
| ___ 17. | Northwood Aqua Opal 3 Fruits Medallion Stippled Bowl. (Ftd and Ruffled. Pastel Iridescence.) | <u>2768</u> ___ 40. | EMERALD GREEN IMPERIAL GRAPE WINE DECANTER & STOPPER. (WOW! USUALLY SEEN IN CARAFE. THIS IS GORGEOUS AND EXTREMELY RARE!) 652 |
| ___ 18. | Northwood Ice Green 3 Fruits Medallion Stippled Bowl. (Ftd and Ruffled. Has a Pastel Finish.) | ___ 41. | Emerald Green Imperial Grape Pitcher. (Another Super Piece. Rare in this Color. Has Chip on Base.) |
| ___ 19. | Northwood White 3 Fruits Medallion Stippled Bowl. (Ftd and Ruffled.) | <u>300</u> ___ 42. | ELECTRIC PURPLE IMPERIAL GRAPE 7 PC. WATER SET. (WONDERFUL IRIDESCENCE.) 633 |
| ___ 20. | Northwood Electric Blue 3 Fruits Medallion Stippled Bowl. (Ftd and Ruffled. Great Iridescence.) | <u>235</u> ___ 43. | Electric Purple Imperial Grape Water Carafe. (Awesome Iridescence.) |
| ___ 21. | Northwood Marigold 3 Fruits Medallion Stippled Bowl. (Nice Dark Marigold. Ftd and Ruffled.) | ___ 44. | Electric Purple Imperial Grape Master Berry Bowl. (Measures 9".) |
| ___ 22. | Northwood Purple 3 Fruits Medallion Bowl. (Ftd and Ruffled.) | <u>375</u> ___ 45. | IMPERIAL PURPLE DIAMOND & SUNBURST 9 PC. WINE SET. (ELECTRIC DECANTER. SUPER BEAUTIFUL SET!) |
| ___ 23. | Northwood Amethyst 3 Fruits Medallion Bowl. (Ftd and Ruffled.) | ___ 46. | Imperial Electric Purple Windmill Ruffled Bowl. (Measures 8".) |

47. Imperial Pastel Marigold Windmill Ruffled Bowl. (Beautiful Pastel Iridescence.)
48. Imperial Purple Scroll Embossed Ruffled Bowl. (Has File Exterior and Measures 7 1/2".)
49. Imperial Dark Marigold Little Barrel Novelty. (Great Iridescence.)
50. **IMPERIAL PURPLE OPEN ROSE 9" PLATE. (BEAUTIFUL IRIDESCENCE. HAS TINY PIN HEAD ON ROSE AS SEEN.)**
51. **IMPERIAL ELECTRIC PURPLE SCROLL EMBOSSED PLATE. (FLAT AND BEAUTIFUL.)**
52. **IMPERIAL ELECTRIC PURPLE CONE & TIE TUMBLER. (BEAUTIFUL IRIDESCENCE.)**
53. **IMPERIAL ELECTRIC PURPLE CHATELAINE TUMBLER. (SCARCE AND BEAUTIFUL.)**
54. Imperial Dark Marigold 474 Water Pitcher.
55. Imperial Teal Stretch Double Scroll Console Set. (Three Piece Set.)
56. **IMPERIAL SMOKE CORN BOTTLE. (ALWAYS A FAVORITE.)**
57. **IMPERIAL DARK MARIGOLD CORN BOTTLE. (HAS VERY NICE COLOR AND IRIDESCENCE.)**
58. Imperial Electric Purple Flute Breakfast Set. (Sugar & Creamer.)
59. Fenton Dark Marigold Horsehead Medallion Rosebowl.
- 1000 60. • **FENTON ELECTRIC BLUE DRAGON AND STRAWBERRY BOWL. (DEEP ROUND WITH SUPER IRIDESCENCE.)**
61. Fenton Green Two Flowers Lg. Ftd Ruffled Bowl. (Scarce Color.)
62. Fenton Electric Blue Lg. Chrysanthemum ICS Ftd Bowl. (Nice Iridescence.)
63. Fenton Blue Vintage Grape Small Epergne.
- 60 64. • Fenton Blue Orange Tree ICS Bowl. (Nice Electric Highlights.)
- 175 65. **FENTON AQUA STAG & HOLLY LG. ICS FTD BOWL. (RARE COLOR.) 9**
66. Fenton Aqua/ Marigold Peacock & Dahlia Ruffled Bowl.
67. Fenton Blue Leaf Chain 9" Plate.
68. Fenton Marigold/Vaseline Vintage Grape Bowl. (7", Very Scarce Color.)
69. Fenton Blue Butterfly & Berry 4 Pc. Table Set. (Nice Matched Set; Tough to Find.)
70. Fenton Celeste Blue Two Row Open Edge Basket. (Large Two 2 Sides Up. Measures 7 1/8" X 6".)
71. Fenton White Two Row Open Edge Basket. (Two Sides Up. Measures 5 1/4" X 5 1/2".)
72. Fenton Red Lg Two Open Edge Hat. (Four Sided Square Shape with Blackberry Interior. Measures 5 3/4" X 5 3/8".)
73. Fenton Red Holly Hat. (Nice Base Color and Iridescence.)
74. Northwood Aqua Opal Daisy & Drape Ftd. Vase. (Nice Example.)
75. **NORTHWOOD ICE BLUE WISHBONE FTD. RUFFLED BOWL. (GREAT PASTEL IRIDESCENCE.) 1503**
76. **NORTHWOOD WHITE WISHBONE FTD. RUFFLED BOWL. (VERY NICE EXAMPLE.)**
77. Northwood Amethyst Wishbone Ftd. Ruffled Bowl. (Very Nice Above Average Iridescence.)
78. Northwood Purple Wishbone Ftd. Plate. (Ruffles & Rings Exterior, Nice and Flat.)
79. Northwood Light Amethyst Wishbone Lg PCE Bowl. (Collar Base with Basketweave Exterior. Really Pretty.)
80. Northwood Green Wishbone Single Lily Epergne. (Well Matched and Great Iridescence.)
81. Two Northwood G&C Whimsy Handled Punch Cups. (Marigold and Purple, Both with Nice Iridescence.)
82. Northwood Marigold Stippled Banded Pin Tray.
83. Northwood Purple G&C Pin Tray.
84. Northwood Marigold G&C Pin Tray.
- 725 85. **NORTHWOOD ICE BLUE G&C HATPIN HOLDER. (NICE BASE COLOR; RARE ITEM W/ GOOD FEET.)**
86. Northwood Purple G&C Hatpin Holder. (Nice Example.)
87. Northwood Marigold G&C Hatpin Holder. (Nice Example.)
88. Pair of Northwood Purple G&C Cologne Bottles. (Both with Good Iridescence.)
89. Pair of Northwood Marigold G&C Cologne Bottles. (One Stopper is Broken at Base as Seen.)
90. Dugan / Northwood Purple G&C Perfume Bottle.
91. Dugan / Northwood Marigold G&C Perfume Bottle. (Has Light Iridescence.)
92. Northwood Green G&C Covered Powder Jar. (Nice Blue Iridescence on Bottom.)
93. Northwood Purple G&C Covered Powder Jar.
94. Northwood Dark Marigold G&C Covered Powder Jar.
95. Northwood Green G&C Dresser Tray. (Multicolored Iridescence.)
96. Northwood Purple G&C Dresser Tray. (Nice Iridescence.)
97. Northwood Marigold G&C Dresser Tray. (Another Nice Example.)
98. Northwood Blue G&C Handled Bon Bon.
99. Northwood Purple G&C Sweetmeat Compote.
- 1500 100. **NORTHWOOD AQUA OPAL G&C CRACKER JAR BOTTOM ONLY. (A RARE "AS IS" ITEM. HAS METAL LID AND INTERNAL CRACK, BUT OH SO BEAUTIFUL.)**
101. **NORTHWOOD SAPPHIRE STIPPLED G&C VARIANT BOWL. (LIGHT IRIDESCENCE. HAS RIBBED EXTERIOR.)**
102. Northwood Sapphire Stippled G&C Variant Bowl. (Ruffled with Ribbed Exterior. Really Nice Multicolored Iridescence on Sapphire Base Glass.)
103. Northwood Sapphire G&C Stippled Variant Bowl. (Has Butterscotch Overlay. Ruffled with Ribbed Exterior.)

104. Northwood Purple G&C 6 Pc. Table Set.
 950 105. **NORTHWOOD PURPLE G&C MASTER PUNCH BOWL & BASE. (VERY NICE IRIDESCENCE.)** 602
 106. Northwood Purple G&C Large Ruffled Open Compote.
 107. Northwood Purple G&C Lg Turned in Centerpiece Bowl. (Nice and Attractive item.)
 108. Northwood Dark Marigold G&C Lg Ruffled Open Compote. (Good Color and Iridescence.)
 109. **NORTHWOOD WHITE G&C LG CENTERPIECE BOWL. (TURNED IN TOP; VERY FROSTY.)**
 110. **NORTHWOOD ICE BLUE G&C FTD BANANA BOAT. (NICE DARK COLOR.)**
 111. Northwood White G&C Ftd. Fruit Bowl. (Straight up Sides with Frosty Iridescence.)
 112. Northwood Green G&C 5 Pc. Berry Set.
 113. Northwood Blue G&C Lg Ruffled Bowl. (Basketweave Exterior. Measures 10 1/2".)
 114. Northwood Ice Green G&C Spatula Ftd. Ruffled Bowl. (Ribbed Exterior. Super Nice.)
 115. **NORTHWOOD ICE BLUE G&C STIPPLED PCE BOWL. (RIBBED EXTERIOR WITH GOOD IRIDESCENCE.)**
 116. Northwood Electric Blue G&C Stippled Variant PCE Bowl. (Ribbed Exterior.)
 117. Northwood Dark Marigold G&C Variant PCE Stippled Bowl. (Ribbed Exterior and Nice Dark Color.)
 118. Northwood Green G&C Stippled Variant Plate. (Ribbed Exterior.)
 119. Northwood Green G&C Variant Stippled Ruffled Bowl. (Ribbed Exterior.)
 120. Northwood Green G&C Stippled Plate. (Ribbed Exterior and Very Nice!)
 121. Northwood White G&C Bon Bon. (Nice & Frosty.) NS
 150 122. - Northwood Dark Marigold G&C 8 Pc. Flared Punch Set. (Standard Size. Dark and Pretty; Rare Shape.)
 123. Northwood Dark Marigold Cherry & Cable Butterdish. (Scarce Item with Excellent Color.)
 124. Northwood Aqua Opal Drapery Rose Bowl. (Very Nice Opal.)
 335 125. **NORTHWOOD ICE GREEN LEAF & BEADS ROSE BOWL. (FROSTY ICE GREEN.)**
 126. Northwood White Leaf & Beads Rose Bowl. (Frosty White.)
 127. Northwood Aqua Opal Leaf & Beads Rose Bowl. (Nice Iridescence.)
 128. Northwood Aqua Opal Leaf & Beads Rose Bowl. (Dark Marigold Overlay and Really Nice.)
 129. **NORTHWOOD PURPLE STIPPLED DANDELION MUG. (NICE EVEN IRIDESCENCE. SUPER!)**
 130. **NORTHWOOD RENNINGER BLUE HEARTS & FLOWERS COMPOTE. (SCARCE COLOR AND SUPER IRIDESCENCE.)**
 131. **NORTHWOOD GREEN HEARTS & FLOWERS COMPOTE. (SCARCE COLOR AND VERY GOOD IRIDESCENCE.)**
 132. **NORTHWOOD BLUE HEARTS & FLOWERS COMPOTE. (NICE EXAMPLE.)**
 133. Northwood Dark Marigold Hearts & Flowers Compote. (Nice Example.)
 134. Northwood White Hearts & Flowers Compote.
 135. **NORTHWOOD AQUA OPAL HEARTS & FLOWERS COMPOTE. (A SUPER NICE EXAMPLE WITH LOTS OF PASTEL OPAL.)**
 136. **NORTHWOOD ICE GREEN BEADED CABLE ROSE BOWL. (FROSTY ICE GREEN IRIDESCENCE.)**
 137. Northwood Ice Blue Beaded Cable Rose Bowl. (Frosty Ice Blue Iridescence.)
 138. Northwood White Beaded Cable Rose Bowl. (Nice Frosty Iridescence.)
 139. Northwood Aqua Opal Beaded Cable Rose Bowl. (Really Nice Example.)
 140. Northwood Blue Beaded Cable Rose Bowl. (Above Average Iridescence with Electric Highlights.)
 141. Northwood Dark Marigold Beaded Cable Rose Bowl. (Very Dark and Nice.)
 142. Fenton Marigold Kittens Cup & Saucer. (Good Mold Strike.)
 143. Fenton Marigold Kittens Cereal Bowl. (Pretty with Good Strike.)
 144. Fenton Marigold Kittens Banana Bowl.
 145. Fenton Marigold Kittens Ruffled Bowl. (Dark Marigold.)
 146. Fenton Marigold Kittens 4 Sided Bowl.
 147. Fenton Vaseline/ MG Strawberry Bon Bon.
 148. Fenton Marigold Thistle Ftd Banana Boat.
 149. Fenton Blue Vintage Grape 7 1/2" Plate. (Has Nice Radium Iridescence.)
 150. Fenton Amethyst Vintage Grape 7 1/2" Plate. (Radium Iridescence.)

.....See You Tomorrow!

Day 2: Lots 150-400

- | | | | |
|------------------|----------------------------------------------------------------------------------------------------------------------------------------------------|------------------|--------------------------------------------------------------------------------------------------------------------------|
| ___ 151. | Northwood Ice Green Round Bushel Basket. (Nice Color and Iridescence.) | ___ 176. | Northwood Marigold Poppy Show Ruffled Bowl. (Above Average.) |
| ___ 152. | Northwood White Round Bushel Basket. (Good Iridescence.) | ___ 177. | Northwood Green Sunflower Ruffled Ftd. Bowl. (Near Emerald Green Iridescence with Nice Blue Highlights.) |
| ___ 153. | Northwood Electric Blue Round Bushel Basket. (Great Electric Iridescence.) | <u>700</u> 178. | NORTHWOOD AQUA OPAL TREE TRUNK STANDARD VASE. (LIGHT BUTTERSCOTCH OVERLAY. MEASURES 9 3/4".) |
| ___ 154. | Northwood Aqua Opal Round Bushel Basket. (Nice Butterscotch Finish.) | ___ 179. | Northwood Electric Blue Tree Trunk Standard Vase. (Measures 9 3/4" Tall.) |
| <u>425</u> 155. | NORTHWOOD SAPPHIRE ROUND BUSHEL BASKET. (VERY RARE AND BEAUTIFUL.) | <u>4250</u> 180. | INCREDIBLE GREEN NORTHWOOD POPPY SHOW PLATE. (FANTASTIC EXAMPLE, COVERED WITH BLUE AND MULTICOLORED IRIDESCENCE.) |
| ___ 156. | Northwood Ice Blue Round Bushel Basket. (Nice Iridescence; Rare Color to Find.) | <u>450</u> 181. | NORTHWOOD ELECTRIC BLUE POPPY SHOW PLATE. (SUPER IRIDESCENCE.) |
| <u>550</u> 157. | NORTHWOOD GREEN HEARTS & FLOWERS PLATE. (SCARCE COLOR WITH RIBBED EXTERIOR.) <u>619</u> | ___ 182. | Northwood Purple Poppy Show Plate. (Above Average Iridescence.) |
| ___ 158. | Northwood Purple Hearts & Flowers Plate. (Ribbed Exterior. Has Average iridescence.) | ___ 183. | Northwood Dark Marigold Poppy Show Plate. (Very Nice!) |
| ___ 159. | Northwood Dark Marigold Hearts & Flowers Plate. (Nice Example.) | ___ 184. | Northwood White Poppy Show Plate. |
| <u>1025</u> 160. | NORTHWOOD LIME ICE GREEN HEARTS & FLOWERS PLATE. (NICE LIME GREEN BASE COLOR WITH RIBBED EXTERIOR.) | ___ 185. | DUGAN PURPLE FARMYARD 3/1 EDGE BOWL. (SCARCE 3/1 EDGE SHAPE WITH NICE IRIDESCENCE.) |
| ___ 161. | Northwood Ice Green Hearts & Flowers PCE Bowl. (Scarce Color and Shape.) | ___ 186. | Dugan Amethyst Round Up Plate. (Nice Iridescence. A Little More on One Side.) |
| ___ 162. | Northwood Ice Green Hearts & Flowers Ruffled Bowl. (Ribbed Exterior.) | ___ 187. | Dugan White Round Up Ruffled Bowl. (Super Color.) |
| ___ 163. | Northwood Ice Blue Hearts & Flowers Ruffled Bowl. (Really Nice Iridescence with Ribbed Exterior.) | ___ 188. | Dugan White Fanciful Plate. |
| ___ 164. | Northwood White Hearts & Flowers Ruffled Bowl. (Ribbed Exterior.) | ___ 189. | Dugan Peach Opal Fishnet Ruffled Epergne. (Dark Peach Opal.) |
| <u>200</u> 165. | NORTHWOOD LT. AQUA/ MG HEARTS & FLOWERS RUFFLED BOWL. (SCARCE COLOR WITH RIBBED EXTERIOR.) <u>30</u> | <u>225</u> 190. | DUGAN MARIGOLD FORMAL HATPIN HOLDER. (NICE BUT LIGHT IRIDESCENCE.) |
| ___ 166. | Northwood Marigold Hearts & Flowers Ruffled Bowl. (Nice Example with Ribbed Exterior.) | ___ 191. | Dugan Amethyst Big Basketweave Vase. (Measures 10" Tall Pretty Iridescence.) |
| <u>125</u> 167. | Fenton Florentine Green Stretch #200 Guest Set. | ___ 192. | Dugan Marigold Lined Lattice Squatty Vase. (Measures 6 1/2".) |
| <u>185</u> 168. | PHOENIX MARIGOLD/MG SAWTOOTH CANDLESTICKS. (NEAT STICKS. MEASURING 6 3/4".) <u>SAGE</u> | ___ 193. | Dugan Amethyst Fanciful Low Ruffled Plate. (Very Attractive Item.) |
| <u>7000</u> 170. | NORTHWOOD AQUA OPAL POPPY SHOW RUFFLED BOWL. (EXTREMELY RARE ITEM, GREAT OPAL AND IRIDESCENCE, HAS TEENY TINY MANUFACTURING CHECK IN BASE.) | ___ 194. | Dugan Purple Border Plants Ruffled Dome Ftd. Bowl. (Has Blue Iridescence in Middle.) |
| ___ 171. | Northwood Ice Green Poppy Show Ruffled Bowl. (Super Nice.) | ___ 195. | Dugan Purple Round Up Low Ruffled Bowl/Plate. (Electric Highlights.) |
| ___ 172. | Northwood Ice Blue Poppy Show Ruffled Bowl. (Another Nice Example.) | ___ 196. | Dugan Purple Round Up 3/1 Edge Bowl. (Really Nice Example.) |
| <u>1650</u> 173. | Northwood White Poppy Show Ruffled Bowl. | <u>90</u> 197. | Dugan Blue Round Up Plate. |
| <u>1650</u> 174. | NORTHWOOD GREEN POPPY SHOW RUFFLED BOWL. (SCARCE BOWL WITH BEAUTIFUL IRIDESCENCE.) | ___ 198. | Dugan Marigold Persian Garden Fruit Bowl & Base. (Ruffled Version.) |
| ___ 175. | Northwood Blue Poppy Show Ruffled Bowl. (A Real Beauty.) <u>DANIS</u> | <u>60</u> 199. | Dugan Marigold Vintage Banded Domed Water Pitcher. (Rare with Good Color.) |
| | | <u>475</u> 200. | DUGAN PURPLE QUESTION MARKS ROUND COMPOTE. (SUPER NICE ELECTRIC IRIDESCENCE.) <u>50</u> |
| | | ___ 201. | Dugan Electric Purple Puzzle Bon Bon. (Super Iridescence!) |
| | | <u>300</u> 202. | DUGAN PURPLE DAISY WEB RUFFLED HAT. (RARE ITEM!) <u>686</u> |
| | | ___ 203. | Dugan Marigold Stork & Rushes & Pc. Water Set. |
| | | <u>150</u> 204. | Dugan Aqua Double Stem Rose Dome Ftd Bowl. (Ruffled and Nice.) |

1030 AM

- 205. NORTHWOOD VASLELINE WILD ROSE FTD. OPEN EDGE CANDY DISH. (EXTREMELY RARE ITEM. FIRST ONE REPORTED! WHEN WILL YOU FIND ANOTHER ONE? WOW!) *37* 300 234.
- 5250* 206. NORTHWOOD LIME/ICE GREEN PEACOCK @ URN MASTER ICS BOWL. (LIME BASE COLOR.) *612* 650 235.
- 200* 207. Northwood Ice Green Peacock @ Urn Master ICS Bowl. *689* 200 236.
- 175* 208. Northwood Ice Blue Peacock @ Urn Master ICS Bowl. (Very Nice Example.) 130 237.
- 275* 209. Northwood Amethyst Peacock @ Urn Master ICS Bowl. (Gorgeous Bright Iridescence.) *600* 275 238.
- 400* 210. NORTHWOOD ICE BLUE GRAPE LEAVES RUFFLED BOWL. (SCARCE & SUPER PRETTY!) *2* 400 239.
- 175* 211. NORTHWOOD GREEN GOOD LUCK PLATE. (RIBBED EXTERIOR.) 725 240.
- 212. Northwood Purple Good Luck Plate. (Ribbed Exterior.) 1 241.
- 213. Northwood Green Good Luck Plate. (Basketweave Exterior.) 1 242.
- 214. Northwood Amethyst Good Luck Plate. (Basketweave Exterior.) 1 243.
- 250* 215. NORTHWOOD HOREHOUND GOOD LUCK PLATE. (BASKETWEAVE EXTERIOR.) *275-1200* 250 244.
- 145* 216. Northwood Light Amethyst Good Luck PCE Bowl. (Ribbed Exterior.) 650 245.
- 265* 217. Northwood Electric Blue Good Luck PCE Bowl. (Ribbed Exterior.) 145 246.
- 90* 218. Northwood Dark Marigold Good Luck PCE Bowl. (Ribbed Exterior.) 155 247.
- 100* 219. Northwood Amethyst Good Luck PCE Bowl. (Ribbed Exterior.) 145 248.
- 130* 220. Northwood Green Good Luck PCE Bowl. (Basketweave Exterior.) 325 249.
- 100* 221. Northwood Green Good Luck PCE Bowl. (Basketweave Exterior.) 3500 250.
- 225* 222. NORTHWOOD PURPLE RIBBED TORNADO VASE. (TRI-CORNERED TOP. RARE VARIATION.) *open 3 side* 600 251.
- 350* 223. Northwood Dark Marigold Corn Vase W/ Plain Base. (Excellent Color. Very Rare.) *#23* 1 252.
- 725* 224. Northwood Dark Marigold Nearcut Goblet. (Rare Color.) 450 253.
- 800* 225. RARE FENTON GREEN SAILBOATS GOBLET. (EXCELLENT EXAMPLE WITH REALLY GREAT IRIDESCENCE!) *#23* 150 254.
- 140* 226. Fenton Red Low Ruffled Acorn Bowl. 1450 255.
- 400* 227. FENTON RED HOLLY RUFFLED BOWL. (WONDERFUL RED IRIDESCENCE. ONE OF THE BEST I'VE SEEN!) *#20* 750 256.
- 110* 228. Fenton Dark Marigold Orange Tree Loving Cup. (A Very Nice Example.) 900 257.
- 400* 229. FENTON LGO GOBLET SHAPED HOLLY COMPOTE. (NICE OPAL AND DARK MARIGOLD OVERLAY. VERY RARE.) *#23* 425 258.
- 2600* 230. NORTHWOOD EMERALD GREEN PEACOCKS PCE BOWL. (LOTS OF BLUE IRIDESCENCE WITH RIBBED EXTERIOR.) 90 259.
- 175* 231. Northwood Green Peacocks PCE Bowl. (Nice Example with Ribbed Exterior.) 825 260.
- 175* 232. Northwood Purple Peacocks Bowl with PCE. (Nice Iridescence with Ribbed Exterior.)
- 150* 233. Northwood Dark Marigold Peacocks PCE Bowl. (Dark Nice Iridescence with Ribbed Exterior.)

- Northwood Ice Green Peacocks PCE Bowl. (Super Pastel Iridescence with Ribbed Exterior.)
- Northwood Ice Blue Peacocks PCE Bowl. (Beautiful Pastel Iridescence with Ribbed Exterior.)
- Northwood White Peacocks PCE Bowl. (Pastel Iridescence with Plain Exterior.)
- NORTHWOOD RENNINGER BLUE STIPPLED PEACOCKS PCE BOWL. (RIBBED EXTERIOR; EXTREMELY RARE COLOR!) #628**
- Fenton Blue Stag & Holly Ftd. Bowl. (Deep Ruffled. Beautiful Iridescence.) *#600*
- Fenton White Leaf Chain Plate. (Pretty Multicolored Iridescence.)
- FENTON ICE GREEN ORANGE TREE MASTER BERRY BOWL. (ONLY ONE REPORTED! HAS DAMAGE AND BUFFING TO SOME FEET.) OTHERS 10-210**
- Fenton Blue Peacock at Urn Plate. (Strong Color and Iridescence.) *Paint = St-1 Plate*
- Fenton Blue Peacock @ Urn ICS Bowl. (Nice Example.)
- Fenton White Peacock @ Urn Plate. (Multicolored Iridescence.)
- Fenton Blue Orange Tree Plate. (Above Average Iridescence and Nice.)
- FENTON MARIGOLD PEACOCK SUMMER GARDENS FLARED VASE. (EXTREMELY RARE. UNFORTUNATELY HAS CRACK IN BASE AS SEEN.) #671**
- Fenton Blue Captive Rose Plate. (Nice One.)
- Fenton Blue Orange Tree Orchard Water Pitcher. (Has One Tumbler.)
- Fenton Marigold Orange Tree Orchard 7 Pc. Water Set.
- Fenton White Orange Tree Ftd. Pitcher.
- NORTHWOOD CORAL FLAME G&C STIPPLED BANDED FRUIT BOWL. (EXTREMELY RARE! LARGE SIZE FOOTED AND RUFFLED. TOM NAMED THIS MUSTARD CUSTARD. REALLY NEAT ITEM.) #23**
- Northwood Pumpkin Marigold Harvest Poppy Compote. (Dark with Lots of Pinks.)
- Northwood Purple Blossomtime Ruffled Compote.
- NORTHWOOD ELECTRIC BLUE LATTICE & POINSETTIA RUFFLED BOWL. (GORGEOUS IRIDESCENCE.) #19**
- Northwood Purple Lattice & Poinsettia Ftd. Ruffled Bowl.
- NORTHWOOD AQUA OPAL GOOD LUCK RUFFLED BOWL. (EXCELLENT BUTTERSCOTCH OVERLAY WITH RIBBED EXTERIOR.)**
- NORTHWOOD ICE BLUE GOOD LUCK RUFFLED BOWL. (HAS RIBBED EXTERIOR AND EXCELLENT IRIDESCENCE.) #11**
- NORTHWOOD SAPPHIRE GOOD LUCK RUFFLED BOWL. (BEAUTIFUL IRIDESCENCE. RIBBED EXTERIOR.) #606**
- Northwood Blue Stippled Good Luck Ruffled Bowl. (Ribbed Exterior and Really Pretty.)
- Northwood Dark Marigold Good Luck Ruffled Bowl. (Nice Dark Marigold with Ribbed Exterior.)
- NORTHWOOD AQUA/BLUE OPAL GOOD LUCK RUFFLED BOWL. (PASTEL IRIDESCENCE AND RIBBED EXTERIOR.) #606**

- 261. **NORTHWOOD HOREHOUND GOOD LUCK RUFFLED BOWL. (NEAT COLOR WITH BASKETWEAVE EXTERIOR.)** *160-450*
- 262. Northwood Green Good Luck Ruffled Bowl. (Nice Satiny Iridescence with Basketweave Exterior.)
- 263. **NORTHWOOD RENNINGER BLUE FRUITS & FLOWERS BON BON. (STIPPLED WITH SCARCE COLOR AND NICE IRIDESCENCE.)**
- 264. Northwood Aqua Opal Fruits & Flowers Bon Bon. (Pretty Example.)
- 265. Northwood Ice Green Fruits & Flowers Bon Bon. (Nice Pastel Iridescence.)
- 266. Northwood Ice Blue Fruits & Flowers Bon Bon. (Nice Example Pastel Iridescence.)
- 267. Northwood White Fruits & Flowers Bon Bon. (Nice Pastel Iridescence.)
- 268. Northwood Purple Fruits & Flowers Bon Bon. (Another Nice One.)
- 269. Northwood Emerald Green Fruits & Flowers Ruffled Bowl. (Measures 10" with Plain Exterior and Super Iridescence.)
- 270. **NORTHWOOD ELECTRIC BLUE PEACOCKS STIPPLED PLATE. (ABSOLUTELY FANTASTIC!!!!!!; ONE OF THE VERY BEST WE HAVE SEEN!)**
- 271. Northwood Blue Stippled Peacocks Plate. (Another Good Example with Ribbed Exterior.)
- 272. **NORTHWOOD AMETHYST/ SODA GOLD PEACOCKS PLATE. (SCARCE COLOR WITH RIBBED EXTERIOR.)**
- 273. **NORTHWOOD GREEN PEACOCKS PLATE. (SCARCE COLOR AND NICE WITH RIBBED EXTERIOR.)**
- 274. Northwood Blue Peacocks Plate. (Good Iridescence with Ribbed Exterior.)
- 275. **NORTHWOOD PASTEL MARIGOLD PEACOCKS PLATE. (REALLY ATTRACTIVE, HAS RIBBED EXTERIOR.)**
- 276. **NORTHWOOD ICE BLUE PEACOCKS PLATE. (PRETTY PASTEL IRIDESCENCE AND RIBBED EXTERIOR.)**
- 277. Northwood Ice Green Peacocks Plate. (Pretty Pastel Iridescence with Ribbed Exterior.)
- 278. Northwood White Peacocks Plate. (Scarce with Basketweave Exterior and Has Great Iridescence.)
- 279. Northwood White Peacocks Plate. (Pastel Iridescence with Ribbed Exterior.)
- 280. **NORTHWOOD ELECTRIC BLUE GREEK KEY PLATE. (SUPER COLOR AND IRIDESCENCE.)** *3 HEAT CHECKS*
- 281. **NORTHWOOD MARIGOLD GREEK KEY PLATE. (RIBBED EXTERIOR. REALLY NICE.)**
- 282. Northwood Dark MG Peacock @ the Fountain Pitcher. (With One Tumbler.) *125*
- 283. Northwood Marigold Peacock @ Fountain 6 Pc. Table Set. (Nice Matched Set.) *800*
- 284. Northwood Purple Peacock @ Fountain Butterdish. (Good Iridescence.) *300*
- 285. **NORTHWOOD ICE BLUE PEACOK @ FOUNTAIN 8 PC. PUNCH SET. (VERY RARE AND BEAUTIFUL; WELL MATCHED COMPLETE SET.)** *5350*
- 286. **NORTHWOOD WHITE PEACOCK @ FOUNTAIN 5 PC. WATER SET. (NICE AND FROSTY MATCHING SET.)**
- 287. Northwood Blue Peacock @ Fountain Pitcher. (Nice Iridescence.)
- 288. Northwood Blue Peacock @ Fountain Ruffled Fruit Bowl. *250* *PINK INSIDE 619*
- 289. Northwood Dark Marigold Peacock @ Fountain Ruffled Fruit Bowl. (Super Pretty.) *95*
- 290. **NORTHWOOD LIME GREEN PEACOCK @ FOUNTAIN PUNCH BOWL. (TOP IS LIME GREEN BASE IS ICE GREEN. HAS TINY BRUISE LITTLE BRUISE BY RUFFLE.)** *1600*
- 291. **NORTHWOOD ELECTRIC BLUE PEACOCK @ FOUNTAIN COMPOTE. (FANTASTIC IRIDESCENCE.)**
- 292. **NORTHWOOD ICE GREEN PEACOCK @ FOUNTAIN COMPOTE. (RUFFLED WITH BEAUTIFUL PASTEL IRIDESCENCE.)** *350*
- 293. **NORTHWOOD PURPLE PEACOCK @ FOUNTAIN 8 PC. PUNCH SET. (NICE IRIDESCENCE AND WELL MATCHED SET.)** *435* *#602*
- 294. Northwood Honey/Mari. Peacock @ Urn Lg. Ruffled Bowl. (Scarce Shape. Stippled All Over with Good Color.) *400*
- 295. **NORTHWOOD AQUA OPAL NIPPON PCE BOWL. (HAS LIGHT OPAL ON TIPS. RIBBED EXTERIOR. EXTREMELY RARE COLOR.)** *1050*
- 296. Northwood White Nippon PCE Bowl. (Ribbed Exterior with Good Iridescence.) *45*
- 297. Northwood Ice Blue Nippon PCE Bowl. (Basketweave Exterior and Nice.)
- 298. Fenton Amethyst Ragged Robin 3/1 Edge Bowl. (Scarce Bowl.) *60* *#25*
- 299. Fenton Green Dragon & Lotus Ftd. Ruffled Bowl. (Spatula Footed with Good Color.) *40* *714*
- 300. **FENTON AQUA OPAL DRAGON & LOTUS RUFFLED BOWL. (GREAT IRIDESCENCE AND GOOD OPAL.)** *1100* *686*
- 301. **FENTON RED DRAGON & LOTUS RUFFLED BOWL. (NICE DARK IRIDESCENCE.)**
- 302. Fenton Green Dragon & Lotus Ruffled Bowl. (Beautiful!)
- 303. Fenton Green Lotus & Grape Ruffled Bowl. (Really Beautiful Example.)
- 304. Fenton Blk Amethyst Ribbon Tie 3/1 Edge Bowl. (Has Gold Iridescence.)
- 305. **FENTON DARK MARIGOLD CHERRY CHAIN CHOP PLATE. (GORGEOUS IRIDESCENCE. HAS ORANGE TREE EXTERIOR AND MEASURES 10 1/2".) 180-2300** *2500*
- 306. Fenton Dark Marigold Two Flowers Ftd. Chop Plate. (Very Beautiful. Measures 11 1/2". Has Flat Flake on Back of Rim.)
- 307. Fenton Aqua Opal Vintage Grape 3/1 Edge Bowl. (Iridized on Interior Only.) *125*
- 308. **NORTHWOOD GREEN IVY TOWN PUMP. (RARE AND DESIRABLE.)** *800*
- 309. **NORTHWOOD PURPLE IVY TOWN PUMP. (VERY SCARCE.)**
- 310. **NORTHWOOD AQUA OPAL THREE FRUITS STIPPLED RUFFLED BOWL. (PASTEL IRIDESCENCE. HAS RIBBED EXTERIOR.)** *300*

#65

- ___ 311. **NORTHWOOD ICE BLUE THREE FRUITS STIPPLED RUFFLED BOWL. (RIBBED EXTERIOR.)**
- ___ 312. Northwood White Three Fruits Stippled Ruffled Bowl. (Ribbed Exterior.)
- 180 313. **NORTHWOOD HOREHOUND 3 FRUITS STIPPLED RUFFLED BOWL. (BASKETWEAVE EXTERIOR; RARE COLOR.)** 250-450
- ___ 314. Northwood Green 3 Fruits Stippled Ruffled Bowl. (Ribbed Exterior.)
- ___ 315. **NORTHWOOD AQUA OPAL 3 FRUITS STIPPLED RUFFLED BOWL. (BUTTERSCOTCH OVERLAY; RIBBED EXTERIOR; NICE EXAMPLE.)**
- ___ 316. Northwood Electric Blue 3 Fruits Stippled Ruffled Bowl. (Very Good Iridescence with Ribbed Exterior. Has Tiny Scratching on Fruit.)
- ___ 317. Northwood Green 3 Fruits Ruffled Bowl. (Plain Exterior and Super Pretty with Blue Highlights.)
- ___ 318. Northwood Dark Marigold 3 Fruits Stippled Ruffled Bowl. (Ribbed Exterior and Nice Example.)
- ___ 319. Northwood Electric Blue 3 Fruits Stippled PCE Bowl. (Nice iridescence with Ribbed Exterior.)
- ___ 320. Northwood Amethyst 3 Fruits Stippled PCE Bowl. (Looks Purple with Good iridescence and Ribbed Exterior.)
- ___ 321. Northwood Purple 3 Fruits PCE Bowl. (Beautiful Iridescence with Plain Exterior.)
- 350 400 322. **NORTHWOOD AQUA OPAL 3 FRUITS STIPPLED PLATE. (NICE OPAL WITH LIGHT IRIDESCENCE. RIBBED EXTERIOR.)**
- 350 323. **NORTHWOOD SAPPHIRE 3 FRUITS STIPPLED PLATE. (RIBBED EXTERIOR.)**
- 400 324. Northwood Horehound 3 Fruits Stippled Plate. (Neat Color and Super iridescence with Ribbed Exterior. Has Scratching on Fruit as Seen.)
- 75 325. Northwood Amethyst 3 Fruits Stippled Plate. (Pretty with Ribbed Exterior. Has Minor Scratching on Fruit as Seen.)
- ___ 326. Northwood Electric Blue 3 Fruits Stippled Plate. (Ribbed Exterior.)
- ___ 327. Northwood Purple 3 Fruits Stippled Plate. (Very Nice with Ribbed Exterior. Has Minor Scratching on Fruit as Seen.)
- ___ 328. Northwood Dark Marigold 3 Fruits Stippled Plate. (Very Nice Item with Ribbed Exterior.)
- ___ 329. Fenton Amethyst Three Fruits Plate. (Very Nice Color and Iridescence.)
- ___ 330. **MILLERSBURG AMETHYST GRAPE LEAVES RUFFLED BOWL. (VERY PRETTY WITH RADIUM IRIDESCENCE.)**
- ___ 331. Millersburg Amethyst Holly Whirl Ruffled Bowl. (Measures 10" with Radium Iridescence.)
- ___ 332. Millersburg Amethyst Primrose Ruffled Bowl.
- ___ 333. Millersburg Amethyst Blackberry Wreath ICS Sauce. (Beautiful Radium Iridescence. Measures 5 1/2".)
- ___ 334. Millersburg Amethyst Blackberry Wreath Ruffled Bowl. (Measures 6 1/2" with Beautiful Radium Iridescence.)
- ___ 335. **MILLERSBURG AMETHYST FLEUR DE LIS DOME FTD BOWL. (3/1 EDGE WITH NICE MULTICOLORED SATIN IRIDESCENCE.)**
- ___ 336. **MILLERSBURG AMETHYST ISAAC BENESCH ADVERTISING BOWL. (VERY EVEN IRIDESCENCE. MEASURES 6" WITH NICE SATINY FINISH.)**
- ___ 337. **MILLERSBURG MARIGOLD COUNTRY KITCHEN COVERED SUGAR. (SCARCE PIECE AND GOOD COLOR.)** MANUFACTURE PEELING
- ___ 338. Millersburg Marigold Country Kitchen Creamer. (Scarce Piece with Good Color.)
- ___ 339. **MILLERSBURG MARIGOLD ZIG ZAG CRIMPED EDGE BOWL. (RADIUM AND REALLY NICE IRIDESCENCE.)**
- ___ 340. **MILLERSBURG GREEN WHIRLING LEAVES TRI CORNERED BOWL. (HAS CRIMPED EDGE AND RADIUM IRIDESCENCE. VERY NICE!)**
- ___ 341. Millersburg Amethyst Strawberry Ruffled Compote. (Super Iridescence!)
- ___ 342. Millersburg Amethyst Grape Wreath Variant 3/1 Edge Bowl.
- ___ 343. Dugan Amethyst Raindrops Domed Ftd 3/1 Edge Bowl. (Scarce.)
- ___ 344. Dugan Amethyst Pony 10 Ruffled Bowl. (Scarce Item.)
- ___ 345. **NORTHWOOD ICE GREEN ACORN BURRS 8 PC. PUNCH SET. (HAS LONG FLAKE INSIDE OF FLUTE.)**
- ___ 346. **NORTHWOOD GREEN ACORN BURR 8 PC. PUNCH SET.**
- ___ 347. **NORTHWOOD DARK MARIGOLD ACORN BURR PUNCH BOWL & BASE.**
- ___ 348. Northwood Dark Marigold Acorn Burr 7 Pc. Water Set.
- ___ 349. Northwood Purple Acorn Burr 3 Pc. Table Set. (Covered Butter, Spooner & Creamer.)
- ___ 350. **NORTHWOOD GREEN ACORN BURR 6 PC. TABLE SET. (NICE IRIDESCENCE ON THIS SET.)**
- ___ 351. Dugan Marigold Beaded Shell Pitcher & 2 Tumblers. (Scarce Pitcher.)
- ___ 352. **WESTMORELAND MARIGOLD WILD ROSE SYRUP JUG.**
- ___ 353. **Fostoria Ice Green Brocaded Palms Centerpiece Bowl. (Measures 12".)**
- ___ 354. Australian Dark Purple Pin Ups Flared Bowl. (Has Wear in Bottom of Bowl.)
- ___ 355. **NORTHWOOD AQUA OPAL PEACOCKS RUFFLED BOWL. (SUPER BUTTERSCOTCH IRIDESCENCE WITH RIBBED EXTERIOR.)**
- ___ 356. Northwood Ice Green Peacocks Ruffled Bowl. (ice Bowl with Ribbed Exterior.)
- ___ 357. Northwood Electric Blue Peacocks Ruffled Bowl. (Wonderful Iridescence and Color with Ribbed Exterior.)
- ___ 358. Northwood Purple Peacocks Ruffled Bowl. (Near Electric Iridescence with Ribbed Exterior.)
- ___ 359. Northwood Dark Marigold Peacocks Ruffled Bowl. (Attractive Bowl with Ribbed Exterior.)
- ___ 360. **NORTHWOOD AQUA /BLUE OPAL PEACOCKS RUFFLED BOWL. (GORGEOUS. ONE OF THE BEST. HAS RIBBED EXTERIOR.)**
- ___ 361. Northwood Blue Peacocks Stippled Ruffled Bowl. (Ribbed Exterior.)
- ___ 362. Northwood Dark Marigold Peacocks Stippled Ruffled Bowl. (Ribbed Exterior.)

- _____ 363. **ST. GOBAIN DARK MARIGOLD LG. FIRCONE VASE. (WONDERFUL DARK COLOR; EXTREMELY RARE ITEM; PERFECT.)**
- _____ 364. **RINDSKOPF DARK MARIGOLD EGYPTIAN QUEEN VASE. (LARGE SIZE; VERY TOUGH TO FIND.)**
- _____ 365. **EUROPEAN EMERALD GREEN BUDDHA FIGURE. (RARE SMALL SIZE, 5" TALL; VERY FEW KNOWN.)**
- _____ 366. Northwood Ice Blue Raspberry Tumbler. (Light Ice Blue.)
- _____ 367. Northwood Purple Raspberry 7 Pc. Water Set. (Nice Matching Set with Good Iridescence.)
- _____ 368. Northwood Dark Marigold Raspberry 7 Pc. Water Set. (Nice Matching Set with Good Color.)
- _____ 369. Northwood Pastel Marigold Raspberry Milk Pitcher. (Real Nice Iridescence.)
- _____ 370. **NORTHWOOD WHITE RASPBERRY MILK PITCHER. (NICE AND FROSTY IRIDESCENCE; RARE ITEM.)**
- _____ 371. Northwood Purple Raspberry Milk Pitcher. (Nice Color and Iridescence.)
- _____ 372. Northwood Green Raspberry Milk Pitcher. (Nice Color and Iridescence.)
- _____ 373. Northwood Dark Marigold Raspberry Milk Pitcher. (Nice Dark Color.)
- _____ 374. Imperial Green Windmill Milk Pitcher. (Helios Iridescence.)
- _____ 375. **IMPERIAL ELECTRIC PURPLE COLUMBIA RUFFLED COMPOTE. (MEASURES 5" X 8"; BEAUTIFUL EXAMPLE.)**
- _____ 376. Light Blue Imperial Heavy Grape Master Berry Bowl. (Scarce Base Color.)
- _____ 377. Imperial Dark Marigold Flute & Cane Milk Pitcher. (Scarce Pitcher with Nice Dark Color.)
- _____ 378. Imperial Smoke Swirl Flute JIP Vase. (Very Nice Iridescence. Measures 7 1/2".)
- _____ 379. Fenton Blue Butterfly & Berry Master Berry Bowl. (Great Iridescence.)
- _____ 380. **FENTON BLUE STARFLOWER PITCHER. (BEAUTIFUL AND VERY RARE PITCHER.)**
- _____ 381. Fenton Amethyst Butterfly & Fern 7 Pc. Water Set. (Nice Set.)
- _____ 382. Fenton Green Butterfly and Fern Pitcher & Tumbler. (Nice Iridescence.)
- _____ 383. Fenton Dark Marigold Holly Plate. (Super Iridescence.)
- _____ 384. Fenton White Holly Plate. (Super Iridescence.)
- _____ 385. **NORTHWOOD ELECTRIC BLUE EMBROIDERED MUMS RUFFLED BOWL. (EXCELLENT EXAMPLE WITH BRIGHT IRIDESCENCE; RIBBED EXTERIOR.)**
- _____ 386. Northwood Blue Embroidered Mums Ruffled Bowl. (Ribbed Exterior.)
- _____ 387. Northwood Purple Embroidered Mums Ruffled Bowl. (Ribbed Exterior.)
- _____ 388. **NORTHWOOD DARK MARIGOLD EMBROIDERED MUMS RUFFLED BOWL. (RIBBED EXTERIOR. SUPER IRIDESCENCE WITH NARROW BASE.)**
- _____ 389. **NORTHWOOD ICE BLUE EMBROIDERED MUMS RUFFLED BOWL. (GOOD IRIDESCENCE WITH PLAIN EXTERIOR.)**
- _____ 390. **NORTHWOOD ELECTRIC BLUE STIPPLED STRAWBERRY PCE BOWL. (WOW! HAS RIBBED EXTERIOR.)**
- _____ 391. Northwood Smokey/Lavender Strawberry PCE Bowl. (Very Scarce Color. Has Plain Exterior.)
- _____ 392. Northwood Electric Purple Strawberry Ruffled Bowl. (Fantastic Iridescence. Has Plain Exterior.)
- _____ 393. Northwood Amethyst Strawberry Plate. (Has Radium Finish with Basketweave Exterior.)
- _____ 394. Fenton Amethyst Peacock & Grape 3/1 Edge Bowl. (Very Nice Iridescence.)
- _____ 395. **FENTON LGO PEACOCK & GRAPE RUFFLED BOWL. (NICE ATTRACTIVE BOWL.)**
- _____ 396. **FENTON PEACH OPAL SLAG PEACOCK & GRAPE RUFFLED BOWL. (OPAL WITH ODD SLAG IN BASE.)**
- _____ 397. Fenton Powder Blue Peacock & Grape Ruffled Bowl. (Neat Color and Iridescence.)
- _____ 398. Fenton Blue Peacock & Grape Ruffled Bowl. (Good Color and Iridescence.)
- _____ 399. Fenton Green Peacock & Grape Bowl with 3/1 Edge. (Really Nice Iridescence.)
- _____ 400. Fenton Amber Peacock & Grape ICS Bowl. (Rare Base Color.)



26



33



40



45



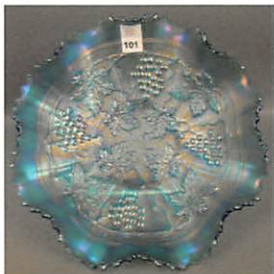
51



53



100



101



105



125



130



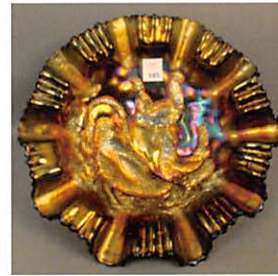
160



174



181



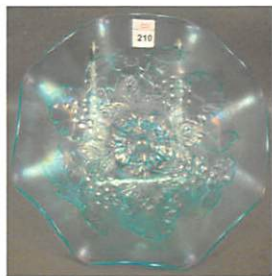
185



225



255



210



256



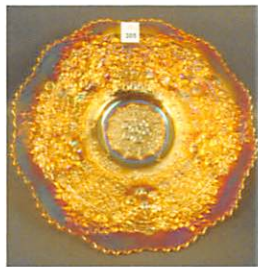
257



260



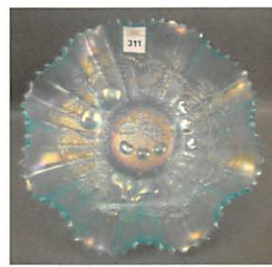
300



305



310



311



330



360



363



364



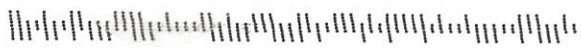
365



380



390



32724\$7352 C011

FEBRUARY 7TH & 8TH 2020
DOLPHIN BEACH RESORT
ST. PETE BEACH, FL

Burns
Auction Service
1554 GOLDEN POND DRIVE
MINNEOLA, FLORIDA 34715

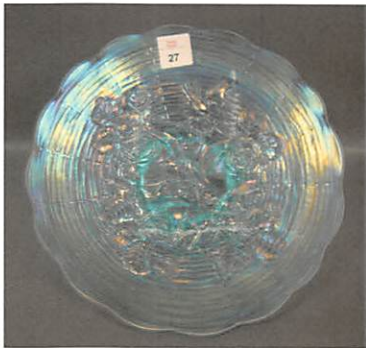
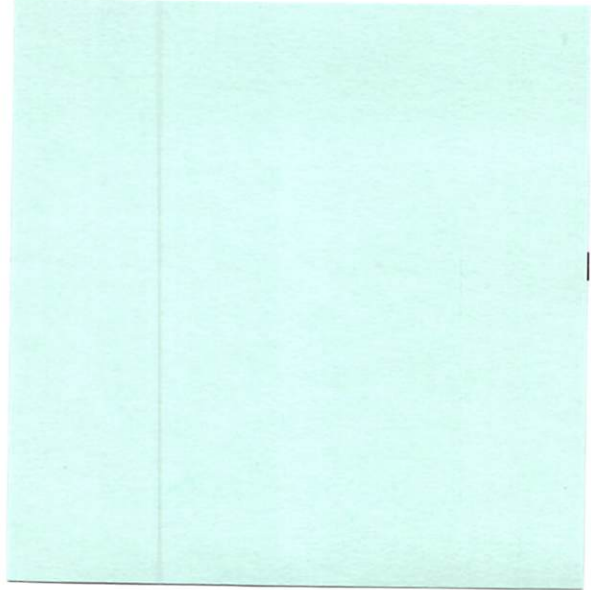
First Class
US POSTAGE
PAID
MILLERSBURG
OH
PERMIT #13



178



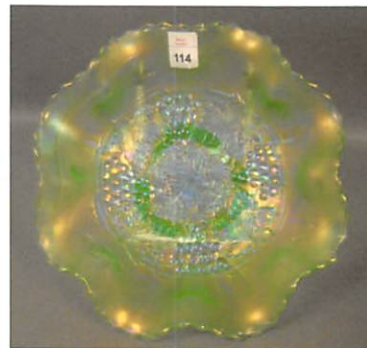
375



27



50



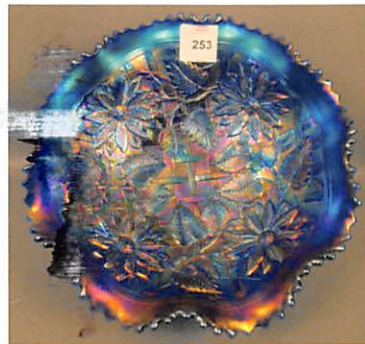
114



195



241



253



258



385

