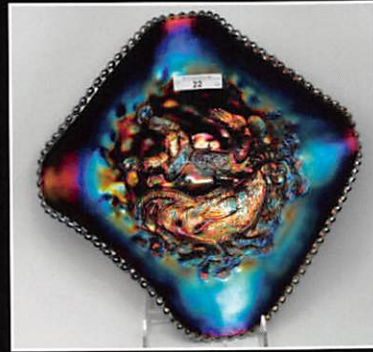
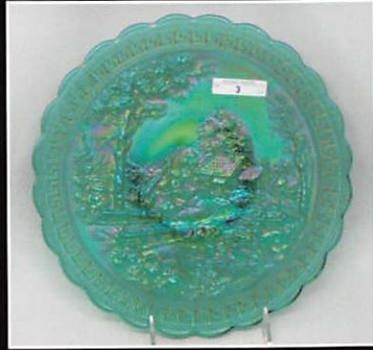




**ACGA 2019 Carnival Glass
Convention Greenville, Ohio
The Rogers Collection**

**The Pine Forests of
Kittrell, North Carolina**

ACGA 2019 Carnival Glass Convention Greenville, Ohio The Rogers Collection



ACGA 2019 Carnival Glass Convention Saturday, June 15th 2019 at 9:30 AM

Preview Thursday and Friday

Romers Banquet Facility. 118 East Main St. Greenville, Ohio 45331

Host Hotel: Holiday Inn Express 937-548- 1328

On Saturday, June 15th 2019 at 9:30 AM, we will be auctioning the Carnival Glass Collection of John and Patricia Rogers. We have an AWESOME selection for everyone in this auction. Make your plans to come over to Greenville for another action packed weekend with 3 auctions, loads of glass for sale, displays and seminars ALL in one room!

*Terms: Cash Check. Visa MC Discover w 3% clerking fee.

**This auction will be available on AUCTION FLEX for ABSENTEE bidding.(Closes at 8:00AM Saturday)

***This auction will be available on PROXIBID for LIVE internet bidding with LIVE audio and Video (read terms).

****For a FULL catalog with hundreds of photos, please go to

www.matthewwrodaauctions.com and click on the AUCTION FLEX logo.

The Rogers Collection

Registration fee for ALL weekend including several meals is only \$50.00 per person!

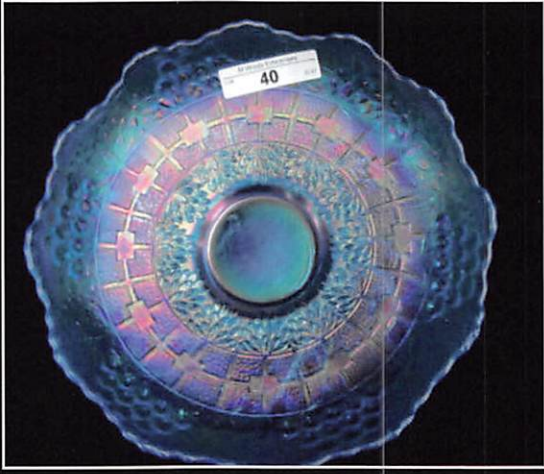
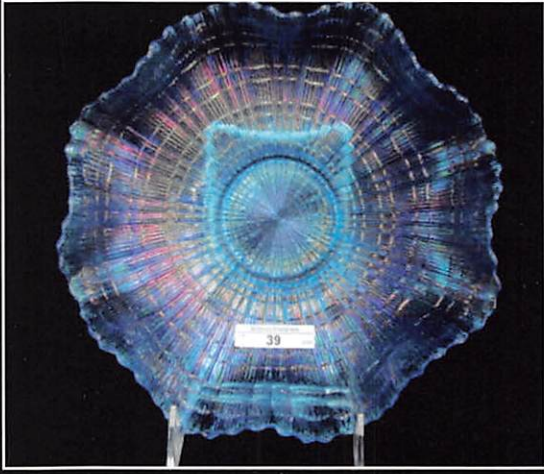
Go to www.myacga.com for all convention information. Don't miss it!

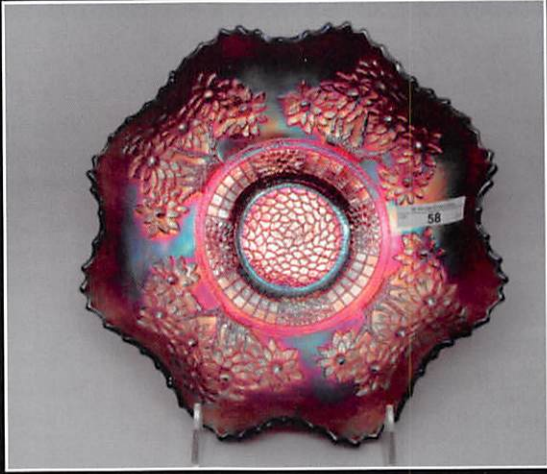
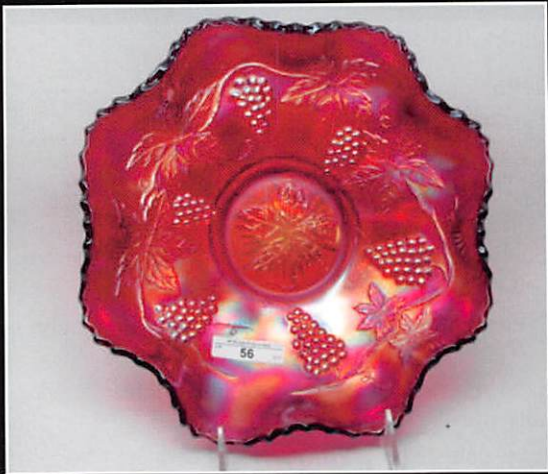
Matthew Wroda Auctions, LLC

Jim Wroda - Auctioneer

Matthew Wroda- Auction Manager





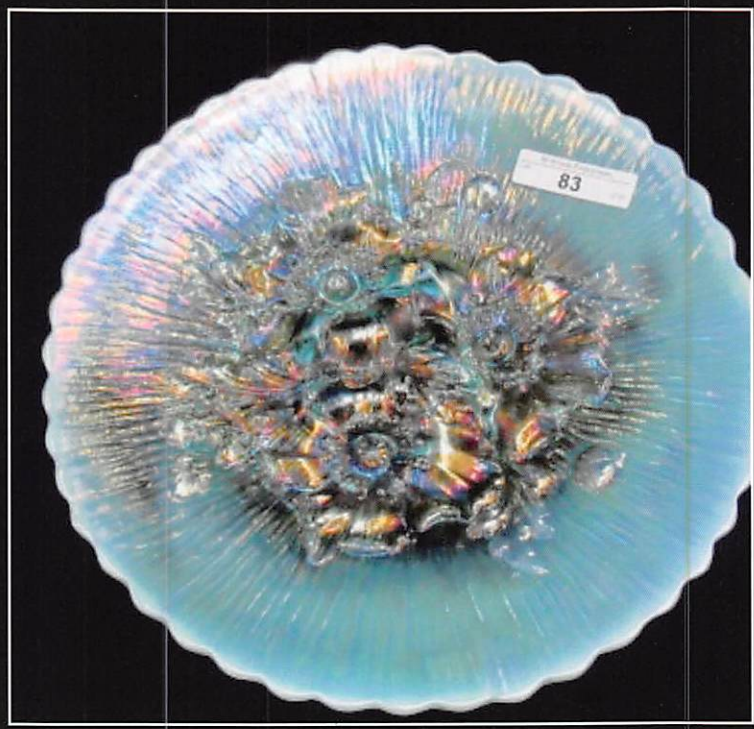
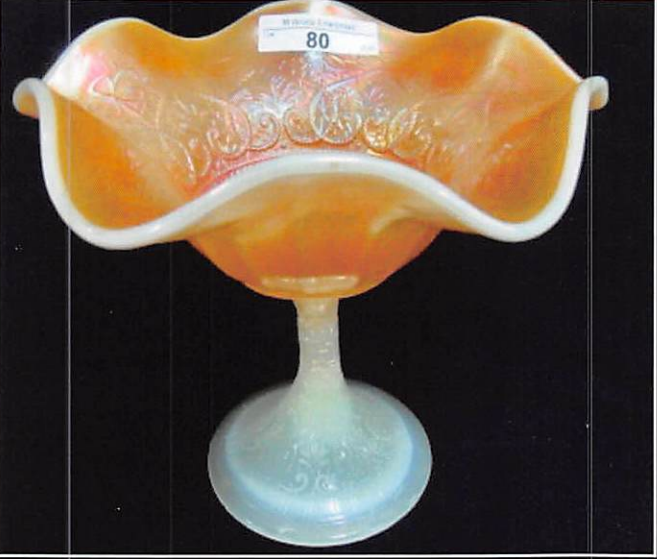


- | | | | |
|----|--|----|--|
| 1 | Imperial 10" Mari Homestead Chop Plate Nuart | 37 | Dugan vaseline opal Twigs 4 1/2" vase |
| 2 | Imperial 10" Elec Purple Homestead Chop Plate Nuart | 38 | Fenton 9" electric blue Fern footed ICS bowl. Extremely Rare! Absolutely beautiful. Possibly only one known. Does have chip on one point. So What!!! |
| 3 | Imperial 10" Homestead Chop Plate Nuart | | |
| 4 | Imperial Elec. Purple 10" Chrysanthemum Chop Plate | | |
| 5 | Nwood 9" Apple Green 3 Fruits Stippled Plate RARE & STUNNING | 39 | Fenton 9" celeste blue Plaid 8-ruffle bowl. Tremendously Rare with just a few known! Hard to find flake on edge |
| 6 | Nwood 9" Mari Good Luck Stippled Plate | 40 | Fenton 7" celeste blue Mirrored Lotus bowl. Extremely rare! |
| 7 | Northwood Ice Blue 10" Peacock at Urn ICS Bowl | 41 | Fenton 7 1/2" celeste blue Mirrored Lotus plate. Unbelievably Rare! |
| 8 | Imperial 9" Elec. Purple Beaded Bullseye Flared Vase | 42 | Fenton 5 3/4" celeste blue Vintage ICS bowl |
| 9 | Dugan 9.5" Elec Purple Wishbone & Spades ICS Bowl SCARCE | 43 | Fenton celeste blue Persian Medallion bon bon. Rare! |
| 10 | Nwood 12" Purple Tree Trunk Midsize Vase | 44 | Fenton celeste blue Stippled Ray stemmed compote. Rare! |
| 11 | Northwood 12" aqua opal Thin Rib mid-size vase. Butterscotchy | 45 | Fenton celeste blue Stippled Ray ruffled compote |
| 12 | Northwood 12" electric blue Thin Rib mid-size vase | 46 | Fenton 8 1/2" celeste blue Grape & Cable footed bowl |
| 13 | Northwood 12" jade Thin Rib mid-size vase | 47 | Fenton 15" celeste blue Melon Rib swung mid-size vase Rare Stretch item! |
| 14 | Northwood 13 1/4" ice blue Thin Rib mid-size vase | 48 | Northwood celeste blue Stretch stemmed compote |
| 15 | Northwood 12" ice green Thin Rib mid-size vase | 49 | Northwood celeste blue Stretch Concave Diamond 16 pc. tankard set. Includes coasters & lid |
| 16 | Northwood 14" sapphire Thin Rib mid-size vase | 50 | Fenton 8" celeste blue Vintage dome footed deep bowl. Very Rare! |
| 17 | Northwood purple 8" Tree Trunk jardinière w/10" mouth. Very hard to find. | 51 | Dugan 8 1/2" celeste blue Double Stem Rose dome footed bowl |
| 18 | Northwood 12 1/2" purple Tree Trunk elephant foot vase | 52 | Dugan celeste blue Coin Spot compote. Very Rare! |
| 19 | Northwood 19 3/4" electric blue Tree Trunk funeral vase. Bright brilliant iridescence. Always a hit! | 53 | Dugan wisteria Coin Spot compote. Very Rare! |
| 20 | Northwood 18 1/2" purple Tree Trunk funeral vase. Beautiful! | 54 | Dugan cobalt Coin Spot compote. Very Rare! |
| 21 | Northwood 15" bright marigold Tree Trunk elephant foot vase. Outstanding color! Hardly ever sold at auction! | 55 | Dugan peach opal Coin Spot compote |
| 22 | Dugan electric purple Diamond shape Farm Yard bowl. Wonderful colors throughout. Here's a good one. | 56 | Fenton 10" red Vintage ruffled bowl. Outstanding piece of red. It looks RED!!! |
| 23 | Dugan 10 3/4" electric purple Petal & Fan ruffled bowl. Absolutely stunning blue & purple iridescence!!! | 57 | Fenton 8 1/2" red Plaid ICS bowl. Extremely Rare and looks RED! |
| 24 | Dugan 12 3/4" purple Persian Garden chop plate. Very nice and hard to come by. | 58 | Fenton 9" red Orange Tree 8-ruffled bowl. |
| 25 | Dugan 12 3/4" peach opal Persian Garden chop plate. Very rare! | 59 | Imperial 16 1/2" red Stretch funeral vase RARE |
| 26 | Dugan 11" peach opal Heavy Web w/Intaglio Fruit ext. | 60 | Hanson red Owl bottle. Outstanding color! |
| 27 | Dugan 8 1/2" electric purple Carolina Dogwood dome footed bowl. Stunning color. | 61 | Fenton 9" red Butterfly & Berry vase |
| 28 | Dugan 8 1/2" electric purple Stippled Petal dome footed CRE plate RARE! | 62 | Fenton 8" red Two Flowers spatula footed bowl |
| 29 | Dugan blue Beaded Shell mug | 63 | Fenton 7" red Coin Spot ruffled bowl |
| 30 | Dugan marigold Beaded Shell mug | 64 | Fenton 8 1/2" brick red Peacock at Urn 8-ruffle bowl. Very rare & looks RED! |
| 31 | Dugan purple Beaded Shell mug | 65 | Fenton red 7" Blackberry Spray JIP hat w/candy ribbon edge |
| 32 | Dugan electric purple Cherries CRE plate. Stunning! | 66 | Fenton red Holly goblet shaped compote |
| 33 | Dugan marigold Persian Garden 6" plate | 67 | Fenton red Orange Tree rose Bowl |
| 34 | Dugan 9" electric purple Cherries 8 ruffle bowl. Manufacture split in center. Not a big deal. | 68 | Fenton peach Opal Orange Tree rose bowl Very Rare! |
| 35 | Dugan 10" peach opal Flower & Spades tri-corner bowl. Very Rare! | 69 | Northwood ice green opal Leaf & Beads rose bowl. Very rare & pretty! |
| 36 | Dugan 8 1/2" aqua/teal Pony bowl RARE | 70 | Northwood ice blue Leaf & Beads rose bowl |
| | | 71 | Northwood aqua opal Peacock at Fountain fruit bowl. Outstanding! |
| | | 72 | Northwood green Peacock at Fountain fruit bowl. Another top rarity! SUPER! |

- 73 Northwood electric blue Peacock at Fountain fruit bowl
- 74 Northwood electric blue Peacock at Fountain water pitcher. Wonderful!
- 75 Northwood marigold Peacock at Fountain water pitcher.
- 76 Northwood ice blue Peacock at Fountain water pitcher
- 77 Northwood aqua opal Peacock at Fountain compote
- 78 Northwood marigold Peacock at Fountain compote
- 79 Northwood white Peacock at Fountain compote. Has large base chip
- 80 Northwood marigold on custard Heart & Flower compote, WOW Awesome piece of glass!
- 81 Northwood 9" emerald green Poppy Show plate. Outstanding piece of glass!
- 82 Northwood 9" electric blue Poppy Show plate. Stunner!!
- 83 Northwood 9" pastel aqua opal Poppy Show plate. Wonderful!!!
- 84 Northwood 9" ice blue Heart & Flower plate
- 85 Northwood 9" lime green Hearts & Flowers plate
- 86 Northwood 9" electric blue Heart & Flower PCE bowl. Stunning!
- 87 Fenton 9" green Peter Rabbit plate. Outstanding color & pressing!!! Wow!
- 88 Fenton 9" blue Peter Rabbit plate. Great pressing!
- 89 Fenton 9" bright marigold Holly plate
- 90 Fenton 9" pumpkin marigold Peacock at Urn plate. Wonderful color
- 91 Fenton 9" marigold Feather Stitch plate. End turns up just a bit!
- 92 Fenton 9 1/2" marigold Captive Rose 12-sided plate. RARE!
- 93 Fenton 9" marigold Peacock Tail plate. Tougher than you may think
- 94 Fenton 9" marigold Vintage plate WOW!
- 95 Fenton 9" purple Vintage plate
- 96 Elegance 8 1/2" marigold dome footed plate. Outstanding color. Just a few known. Attributed to Northwood
- 97 Elegance 8 1/2" ice blue dome footed plate. Outstanding color. Just a few known in any of this. Attributed to Northwood
- 98 Elegance 8" ice blue dome footed ruffled bowl. Extremely rare. Attributed to Northwood
- 99 Fenton 10" blue Little Daisies ruffled bowl. Rare and very pretty!
- 100 Fenton 10" marigold Little Daisies ruffled bowl. Rare and very pretty!
- 101 Northwood ice blue Ribbed Tornado vase. Very rare & very pretty!
- 102 Northwood marigold Ribbed Tornado vase. Very hard to find and pretty!
- 103 Northwood green Tornado large size vase. Small flake on base
- 104 Northwood white Tornado small size vase SUPER RARE!
- 105 Northwood emerald green Corn vase. If there were ever to be an emerald, this is it!!
- 106 Northwood electric purple Corn vase with stalk base
- 107 Northwood sapphire Daisy & Plume 3-footed rose bowl. Only one reported. Does have small chip on toe. Who Cares!
- 108 Northwood aqua opal Daisy & Plume rose bowl w/Raspberry interior. Minor flaking on toes as normal.
- 109 Northwood aqua opal Leaf & Beads flared nut bowl
- 110 Northwood aqua opal Dandelion stippled mug
- 111 Fenton aqua opal Fine Cut & Roses rose bowl w/Fancy interior. Always popular!
- 112 Northwood aqua opal Singing Bird mug
- 113 Northwood ice blue Singing Bird mug
- 114 Northwood ice green Grape Arbor tankard. Extremely Rare w/just a few of these known. Some would call this lime. Small line by handle
- 115 Northwood white Grape Arbor tankard
- 116 Northwood white Wisteria tankard pitcher. Very rare and Very Frosty!!!
- 117 Northwood ice blue 7 pc. Dandelion tankard set. Extremely rare and well matched! Can't remember last time an entire set sold together!
- 118 Northwood 8 1/2" pastel aqua opal Rose Show ruffled bowl.
- 119 Northwood 8 1/2" aqua opal Embroidered Mums bowl. Very Rare!
- 120 Northwood 8 1/2" aqua opal Peacocks bowl
- 121 Northwood pastel aqua opal Fine Cut & Roses flared candy dish. Tiny nick on toe. Color makes up for that!
- 122 Northwood 9" ice green Good Luck plate SUPER RARE PASTEL!!
- 123 Northwood 9" dark ice blue Good Luck plate-Very Rare
- 124 Northwood 9" white Good Luck plate-Rare!
- 125 Northwood 9" electric blue Good Luck plate
- 126 Northwood 9" electric purple Good Luck plate AWESOME
- 127 Northwood 9" pumpkin marigold Good Luck plate
- 128 Northwood 9" pastel marigold Good Luck stippled plate
- 129 Northwood 9" electric green Good Luck PCE bowl. Has pigment streak as most green does
- 130 Northwood 8 1/2" ice blue Good Luck ruffled bowl
- 131 Northwood 8 1/2" pastel aqua opal Good Luck ruffled bowl
- 132 Northwood 8 1/2" electric blue Good Luck ruffled bowl
- 133 Northwood 8 1/2" brilliant pastel marigold Good Luck ruffled bowl
- 134 Northwood 8 1/2" emerald green Good Luck ruffled bowl



- 135 Northwood 8 1/2" pastel marigold Good Luck PCE bowl
- 136 Northwood ice blue Acorn Burr 8 pc. punch set. Well matched rare set! Very nice!
- 137 Northwood lime green Acorn Burrs 8 pc. punch set. Repaired flute
- 138 Northwood electric purple Acorn Burrs 8 pc punch set
- 139 Northwood ice blue Raspberry milk pitcher
- 140 Northwood ice blue Greek Key & Scales dome footed nut bowl
- 141 Northwood ice blue Graceful ruffled vase
- 142 Northwood ice blue Butterfly bon bon w/Threaded back.
- 143 Northwood blue Butterfly bon bon w/Threaded back
- 144 Northwood green Butterfly bon bon w/Threaded back
- 145 Northwood purple Grape & Cable spittoon made from powder jar base. Very Rare. Just a handful known
- 146 Northwood blue Grape & Cable banded hat pin holder. Very rare. Tiny nick on one toe
- 147 Northwood electric green Grape& Cable Hat pin holder
- 148 Northwood lavender Grape & Cable hat pin holder
- 149 Fenton emerald green Orange Tree hat pin holder RARE!
- 150 Fenton purple Orange Tree hat pin holder- Very Rare-tight tuck on the top
- 151 Northwood blue Daisy & Plume flared candy dish. Very rare! Has a couple toe nips as expected
- 152 Northwood blue Grape & Cable stippled bon bon
- 153 Northwood 9" aqua opal Peacocks PCE bowl. Extremely Rare and Beautiful
- 154 Northwood 9" electric green Peacocks PCE bowl RARE!
- 155 Northwood 8 1/2" marigold Peacock stippled PCE bowl
- 156 Northwood 9" electric blue Peacocks plate. Stunning!
- 157 Northwood 8 1/2" green Peacocks stippled ruffled bowl. Extremely rare!
- 158 Northwood 8 1/2" marigold Peacock stippled ruffled bowl
- 159 Northwood 8 1/2" powder blue opal Peacocks ruffled bowl. Rare color & Beautiful!
- 160 Northwood 10" aqua opal Peacock at Urn MIC bowl. Super rich color. Wonderful piece of glass. Is a bit out of round.
- 161 Northwood pumpkin marigold Peacock at Urn 5 pc. ice cream set-Well matched. Best set you'll see together
- 162 Northwood electric blue 7 pc. Peacock at Urn ice cream set. Outstanding color. From Harold Cox collection.
- 163 Set of 7 6" Peacock at Urn ICS bowls. Selling on a wonderful display board. One Money. Northwood Mari, ice green, white, green, purple, Millersburg radium green and purple.
- 164 Northwood 8 1/2" electric blue Embroidered Mums ruffled bowl
- 165 Northwood 8 1/2" electric Poinsettia & Lattice footed bowl. Awesome!
- 166 Northwood dark marigold Poinsettia & Lattice footed bowl
- 167 Northwood 7" emerald green Fruits & Flowers plate w/radium iridescence. BUY IT!
- 168 Northwood 9 1/2" marigold Grape & Cable plate w/BW back. Really beautiful!
- 169 Northwood 9" purple hand decorated Rainbow plate with Enamelled Cherries. Only one we've seen!
- 170 Northwood dark marigold Drapery rose bowl. Loaded with color!
- 171 Northwood 6" sapphire Peacock at Urn stippled ICS bowl. Extremely rare. Have never sold one before!
- 172 Northwood 6" bright radium marigold Peacock at Urn ICS bowl. Absolutely fabulous. BUY AT ANY PRICE!
- 173 Northwood dark marigold Diamond Points footed basket. Rare!
- 174 Northwood marigold on moonstone Poppy pickle dish
- 175 Northwood aqua opal Poppy pickle dish
- 176 Northwood lavender Dandelion mug
- 177 Northwood marigold Singing Birds mug
- 178 Northwood lavender Singing Birds mug
- 179 Fenton brick red Orange Tree mug
- 180 Fenton powder blue Orange Tree mug
- 181 Fenton marigold Orange Tree mug
- 182 Fenton red Orange Tree mug
- 183 Northwood 6 3/4" ice blue Leaf Columns squatty vase
- 184 Northwood 6" white Leaf Columns squatty vase
- 185 Northwood 6" lavender Leaf Columns squatty vase
- 186 Northwood 5 3/4" marigold Leaf Columns squatty vase. As short as you'll find
- 187 Northwood 7" purple Leaf Columns squatty vase
- 188 Northwood 6 1/2" ice green Diamond Point squatty vase
- 189 Northwood 7" white Diamond Point squatty vase
- 190 Northwood 7 1/4" aqua opal Drapery vase
- 191 Dugan 5 1/2" electric purple Pulled Loop squatty vase. Wonderful!
- 192 black amethyst Bat hat pin
- 193 black amethyst Big Butterfly hat pin and black amethyst Six Plums hat pin
- 194 black amethyst Triads hat pin and Black amethyst Jute Braid hat Pin
- 195 black amethyst Dimples & Brilliance hat pin
- 196 black amethyst Tufted Throw Pillow hat pin black amethyst UNKNOWN-(multi-point star & hat pin
- 197 black amethyst Top of the Morning hat pin
- 198 black amethyst Moire Beetle hat pin
- 199 black amethyst snake w/ coil body
- 200 5 decorated pink /blue / teal/ White and Blue Rooster hat Pins
- 201 Northwood 9" pastel aqua opal Grape & Cable stippled PCE bowl



- 202 Northwood 9" ice blue Grape & Cable stippled PCE bowl
- 203 Northwood 9" electric blue Grape & Cable PCE bowl
- 204 Northwood 9" electric green Grape & Cable PCE bowl w/BW back
- 205 Northwood 8 1/2" ice green Grape & Cable stippled ruffled bowl
- 206 Northwood 9" aqua opal Three Fruits Stippled PCE plate. Loaded with opal. One of the best you'll see
- 207 Northwood 9" powder blue opal Three Fruits stippled spatula footed bowl
- 208 Northwood 8 1/2" ice blue Three Fruits ruffled bowl. Very rare and pretty!
- 209 Northwood 8 1/2" marigold Three Fruits Stippled ruffled bowl
- 210 Northwood 9" ice blue Nippon PCE bowl
- 211 Northwood 8" dark ice green/lime Wishbone footed bowl
- 212 Northwood 8 1/2" ice green Nippon ruffled bowl. Very Rare!
- 213 Northwood 9" electric green Nippon plate. Absolutely beautiful!
- 214 Northwood 8 1/2" ice blue Peacocks PCE bowl
- 215 Northwood 9 1/2" electric blue Wishbone PCE bowl. Awesome color!
- 216 Imperial electric purple 474 water pitcher
- 217 Imperial electric purple Chatelaine water pitcher
- 218 Imperial 13" electric purple Morning Glory flared funeral vase. Outstanding color! Take a look. The base color of this leans violet!!! Beautiful!
- 219 Imperial 10" radium marigold Morning Glory squatty funeral vase
- 220 Imperial 11" electric purple Ripple mid-size vase w/flared top of 8 1/4"
- 221 Imperial Grape 9" electric purple plate
- 222 Imperial Grape 11" electric purple deep ruffled bowl
- 223 Imperial 9" electric purple Pansy ruffled bowl. Incredible iridescence.
- 224 Imperial electric purple Windmill dresser tray. Awesome!
- 225 Imperial teal Windmill pickle dish. Silvery
- 226 Imperial 9" smoke Sand & Shell plate HOT!
- 227 Imperial 14 1/2" red Stretch charger plate
- 228 Imperial electric purple Thumbprint & Ovals ruffled vase
- 229 Imperial 5 1/2" electric purple Colonial Lady vase. Awesome!
- 230 Imperial marigold on Milk glass Smooth Panels 4 1/2" flared vase
- 231 Imperial 3 1/2" electric purple Morning Glory squatty vase
- 232 Imperial electric purple 4 1/4" Morning Glory flared vase. Wonderful top!
- 233 Fenton purple Diagonal Band decorated iris water pitcher
- 234 Fenton blue Diagonal Band tankard w/painted iris
- 235 Fenton blue Blackberry Block tankard. Tremendous pressing and great color! No trade up needed on this one!
- 236 Fenton dark marigold Blackberry Block tankard
- 237 Fenton marigold Orange Tree Scroll tankard
- 238 Fenton electric blue Orange Tree Scroll tankard pitcher
- 239 Fenton blue Strawberry Scroll tankard pitcher. Always a sought after tankard
- 240 Fenton blue Rustic jardiniere. Extremely rare! Is 6" high x 12" wide. Does have line across base.
- 241 Fenton 18" green Rustic funeral vase. Wonderful multicolor iridescence!
- 242 Fenton 18" marigold Rustic funeral vase DARK
- 243 Fenton 18 1/4" frosty white Rustic funeral vase. Very nice color on an always desirable funeral vase!
- 244 Fenton marigold Fentonia water pitcher
- 245 Fenton 10" frosty white Little Fishes footed bowl. Very few of these known.
- 246 Fenton 9" purple Cherry Chain ruffled bowl
- 247 Fenton 9 1/2" blue Birds & Cherries ICS bowl. Extremely rare! Possibly only one known!
- 248 Fenton peach opal Water Lily bon bon. Extremely hard to find
- 249 Fenton 7" Persian blue Pond Lily card tray. Very Rare!
- 250 Fenton blue novelty Butterfly
- 251 Fenton ice green novelty Butterfly
- 252 Fenton purple novelty Butterfly
- 253 Fenton marigold novelty Butterfly
- 254 Contemporary ice blue large Butterfly novelty. We believe from the museum
- 255 Fenton 8 1/2" Persian blue Peacock at Urn 8-ruffle bowl. Very Rare!
- 256 Northwood 6" white Thin Rib squatty vase
- 257 Northwood 6 1/2" electric purple Thin Rib squatty vase. Small flake on edge. WHO CARES!
- 258 Northwood 6" green Thin Rib squatty vase
- 259 Northwood 7" ice blue Thin Rib squatty vase
- 260 Northwood 6" lime green Thin Rib squatty vase
- 261 Northwood 6" marigold Thin Rib squatty vase
- 262 Northwood marigold on moonstone Grape & Cable stippled bon bon. Beautiful!
- 263 Northwood marigold Grape & Cable bon bon
- 264 Northwood pastel marigold Grape & Cable stippled bon bon
- 265 Fenton 6" marigold Little Flowers plate
- 266 Dugan 7" pastel marigold Lattice & Points plate. Rare!
- 267 Dugan 6" peach opal Garden Path Vari. plate. Extremely Rare!
- 268 Dugan 6 1/2" electric purple Honeycomb & Beads plate w/CRE
- 269 Dugan 6 1/2" electric purple Scales plate
- 270 Dugan 6" light amethyst Persian Garden plate. Beautiful!



- 271 Imperial electric purple 474 8-piece punch bowl set. Rare set w/awesome color!
- 272 Imperial electric purple Heavy Grape 7 pc. punch set
- 273 Westmoreland peach opal Fruit Salad 8 pc. punch set
- 274 Northwood white Wisteria tumbler
- 275 Northwood ice blue Peacock at Fountain tumbler
- 276 Northwood electric blue Peacock at Fountain tumbler
- 277 Northwood marigold Peacock at Fountain tumbler BEST!
- 278 Fenton blue Blackberry Block tumbler
- 279 Fenton marigold Blackberry Block tumbler
- 280 Fenton blue Strawberry Scroll tumbler
- 281 Northwood teal Grape & Cable mid-size punch bowl and base (Base is green)
- 281a 6 Northwood Grape & Cable punch cups in odd sapphire/teal color Stippled. Selling as set. John has had these cups with this set for two decades.
- 282 Northwood 8 1/2" green Sunflower spatula footed bowl. Beautiful!
- 283 Northwood 9" bright marigold Stippled Three Fruits plate. One of the best ones you will ever see!
- 284 Northwood blue Raspberry water pitcher. Very rare and very few known. Has small hairline in handle.
- 285 Northwood purple Raspberry water pitcher
- 286 Northwood 17 1/2" electric blue Thin Rib swung mid-size vase. In all actuality, these last two could be considered funeral vases
- 287 Northwood 16" olive green Thin Rib swung mid-size vase
- 288 Northwood electric blue Grape & Cable stippled banded large footed fruit bowl. Very rare to find!
- 289 Northwood electric blue Grape & Cable low footed fruit bowl. Exceptional color!
- 290 Fenton blue Diagonal Band enameled tumbler
- 291 Fenton purple Diagonal Band enameled tumbler
- 292 Fenton blue Orange Tree Scroll tumbler
- 293 Fenton marigold Orange Tree Scroll tumbler
- 294 Northwood white Grape Arbor tumbler
- 295 Fenton marigold Fentonia tumbler
- 296 Imperial electric purple Chatelaine tumbler
- 297 Fenton blue Orange Tree powder jar w/aqua opal lid-Rare color combination!
- 298 Fenton chocolate Orange Tree powder jar. Very Rare!
- 299 Fenton blue Orange Tree powder jar
- 300 US Glass honey amber Cosmos & Cane basket. Only one known. Does have a crack. 6 1/2" x 3"
- 301 US Glass white Cosmos & Cane flared compote. Punch bowl shape
- 302 Imperial dark marigold Columbia rose bowl. Very rare shape. Internal fracture from edge. Probably from making
- 303 30Dugan purple deep round Butterfly & Tulip footed bowl. Very rare shape for this. A bit silvery. Has a small manufacturing split at a seam.
- 304 Dugan 9" electric purple Apple Blossom Twig low ruffled bowl. Stunning!
- 305 Dugan 8 1/2" blue Apple Blossom Twigs plate. Very rare!
- 306 Dugan 11" peach opal Persian Garden ICS bowl
- 307 European Mary Gregory 3" hand painted cordial CUTE!
- 308 Cambridge purple Inverted Strawberry milk pitcher. Rare & beautiful!
- 309 Cambridge green Buzz Saw large cruet w/original stopper
- 310 European 12" Aurora Pearls painted brides bowl
- 311 Fenton marigold Diamond Rib jardinière with straight top -RARE
- 312 Fenton 10" electric blue Fan Tail footed ruffled centerpiece bowl
- 313 Fenton 7" ice green Mirrored Lotus ruffled bowl w/Berry ext. Extremely Rare. One or Two known.
- 314 Fenton 9" blue Ribbon Tie 3/1 edge low bowl. Beautiful!
- 315 Fenton 6" wisteria Lotus & Grape footed nut bowl. Extremely rare color!!
- 316 Fenton 9" honey amber Cherry Chain ICS bowl. Rare! First I've seen!
- 317 Fenton 9" blue Orange Tree plate
- 318 Fenton electric blue Panther 5" footed sauce
- 319 Fenton 7" green Diamond & Bows vase. Actually, quite hard to find!
- 320 Fenton emerald green Mikado compote. Very Rare to find in this color. Even tougher to find with this type of iridescence!! WOW! A top piece in the auction!!!
- 321 Imperial 8" smoke Parlor Panels vase
- 322 Imperial 3 1/2" squatty marigold Morning Glory vase
- 323 Imperial 6 1/2" marigold Morning Glory fluted vase. Really wild top!
- 324 Imperial 5" marigold Ripple squatty vase
- 325 Imperial 4 1/2" marigold Thin Rib & Drape vase
- 326 Imperial 5" marigold Thin Rib & Drape vase
- 327 Imperial 8 1/2" electric purple Pansy 8 ruffled bowl
- 328 Dugan 8 1/2" peach opal Stippled Petal dome footed bowl
- 329 Beaded Conteen Purse
- 330 Blue Beaded Flapper Purse
- 331 Beaded Carnival Purse
- 332 Beaded Purse w/roses Design

