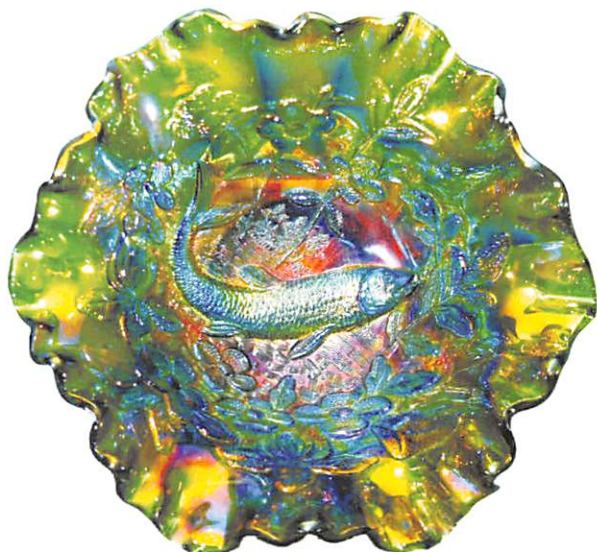


BURNS *Auction Service*

Presents

THE BETTY JOHNSON CARNIVAL GLASS AUCTION



Lot 390

TWO DAY EVENT

FRIDAY EVENING, MARCH 22ND, 2019
6:00PM (PREVIEW 3:00PM-6:00PM)
SATURDAY, MARCH 23RD, 2019
9:30AM (PREVIEW 7:30AM-9:30AM)

**AT THE
HERITAGE COMMUNITY CENTER
3558 US ROUTE 62
MILLERSBURG, OHIO 44654**



Lot 205



Lot 220



Lot 215



Lot 250

TWO DAY CARNIVAL GLASS AUCTION

Friday March 22nd 2019 Auction 6:00 pm (preview 3:00 pm- 6:00 pm)

Lots 1-175

Saturday March 23rd 2019 Auction 9:30 am (preview 7:30 am- 9:30 am)

Lots 176-end

Heritage Community Center

3558 US Route 62

Millersburg, Ohio 44654

Please come and join us for this super two day event. We are featuring the Betty Johnson Carnival Glass Collection.

There will be some very rare Millersburg Items and other Beautiful Carnival Glass for your bidding pleasure.

We will begin with a Friday evening auction, and then start right up again Saturday morning.

Need a place to stay? May we suggest the Comfort Inn, Berlin, OH

Just phone 330-893-7400 and mention Burns Auction for special room rate.

There will be Good Amish food onsite for both Auction Days. Hope to see you there!!!!

Absentee Bid Policy

Absentee/ Phone Bids are Gladly Accepted. Either by placing bids through our website or Contacting Our Office at **503.756.2629** or **407.592.6552**. Can't Attend? We also will have online live Bidding Via Auction Flex/ HiBid.

If you choose to use this service a 14% buyer's premium will apply to **ONLINE LIVE BIDDING ONLY. (There is NO Buyers Premium for in house, Absentee or Phone Bids)** This Feature allows you to bid right along with the auction as it is being conducted. Please refer to our website for all terms & Conditions of this sale. Located on the Burns website and Hibid website.

Live Phone Bidding

Please be sure to submit your phone bid request early. Due to limited Space, We Cannot Accept Phone Bids with a Pre- Auction Estimate below \$500.00. All Phone Bids Must Be Submitted by Thursday, March 21st, 6:00pm EST.

Terms and Condition of Sale

Cash, Pre-Approved Checks, Visa, MasterCard, Discover & American Express Accepted.

A 4% Buyers Premium will apply to all credit Card Purchases, With Exception of Cash or Check.

All Statements Made the Day of Sale will Take Precedence Over any and All Printed Material. All Items are Being Sold Without Guarantee or Warranty Applied, Regardless of Statements Made by Auctioneer or Staff. Auction Company is Not Responsible for any Accidents, Thefts, Breakage, or Sold Items. Burns Auction Service Reserves the Right to Withdraw any Property at any Time before and During Actual Sale. All Sales are Final Once and Item Leaves Auction Location!

Please Visit our Website for Complete Listing and Photos of All Items to be Sold!

www.tomburnsauctions.com & tomburnsauctions.hibid.com

PUBLIC WELCOME

Debra Jo Burns

Auctioneer

503.756.2629

Ohio license # 2016000127

Thomas J. Burns

Auctioneer

407.592.6552

Ohio License # 57198435439

Millersburg Carnival Glass Auction Friday, March 22, 2019 Lots 1-175

- | | |
|---|---|
| <p>___ 1. Imperial Dark Marigold Fashion Punch Base Only.</p> <p>___ 2. Northwood Marigold Memphis Punch Base Only. (Lots of Pretty Pastel Highlights!)</p> <p>___ 3. Northwood Marigold Grape & Cable Punch Base Only. (Mid-Size Base.)</p> <p>___ 4. Three Piece Fenton Carnival Lot. (Amethyst Birds and Cherries Compote, Blue Thistle Bowl with 3/1 Edge, Marigold Peacock and Grape Ruffled Bowl.)</p> <p>___ 5. Pair of Carnival Glass Tumblers. (N Electric Blue Peacock at the Fountain, and N Pearlized Custard Grape & Gothic Arches.)</p> <p>___ 6. Millersburg Amethyst Peacock at Urn 6" Bowl. (Satin Finish, Beading with No Bee.)</p> <p>___ 7. Millersburg Marigold Rays & Ribbons Bowl. (3/1 Edge. 10 1/4" Radium and Nice!)</p> <p>___ 8. Millersburg Marigold Holly Sprig Bowl. (Ruffled Crimped Edge with Star Interior, Radium Iridescence!)</p> <p>___ 9. Westmoreland Peach Opal Scales Flared Plate. (8 3/4" Nice Opal and Very Flat.)</p> <p>___ 10. MARIGOLD INCA BOTTLE. (MADE IN PERU 9 1/2". NICE NOVELTY ITEM!)</p> <p>___ 11. Marigold Iridized Marigold Pitcher & Tumbler. (Attributed to Moser. Marigold with Hand Enameled Floral Accent.)</p> <p>___ 12. Three Piece Carnival Glass Lot. (Northwood Marigold Singing Birds Mug, N. Green Rainbow 9' Plate with BW Exterior, & N. Amethyst Flute Hat.)</p> <p>___ 13. Lot Including Four Carnival Glass Vases. (Northwood Amethyst Squatty Thin Rib 6 3/4" Vase, N. Amethyst 11 1/2" Thin Rib Vase, N. Purple 7 1/4" Fine Rib Squatty Vase, N. Russet Green 11 1/4" Four Pillar Vase.)</p> <p>___ 14. Northwood Purple G&C Hatpin Holder & Hatpin. (Purple Grape & Cable Hatpin Holder and Iridized Czech Beaded Hatpin.)</p> <p>___ 15. NORTHWOOD ICE BLUE FINE CUT & ROSES ROSEBOWL. (NICE AND FROSTY IRIDESCENCE!)</p> <p>___ 16. NORTHWOOD ICE BLUE DRAPERY VASE. (7 3/4" TALL, VERY PRETTY WITH GOOD FEET!)</p> <p>___ 17. NORTHWOOD WHITE DRAPERY VASE. (8" TALL. SUPER PRETTY AND FROSTY. GOOD FEET.)</p> <p>___ 18. Northwood Ice Green Tri-Cornered Candy Dish. (Good Feet.)</p> <p>___ 19. Northwood Ice Blue Tri-Cornered Candy Dish. (Nice Iridescence with Good Feet.)</p> <p>___ 20. Northwood Amethyst Drapery Ruffled Rosebowl. (Nice Iridescence.)</p> <p>___ 21. Pair of Northwood Marigold Rose Bowls. (Northwood Marigold Drapery and Marigold Leaf and Beads. Both Have Beautiful Iridescence, Selling 2 X the Money.)</p> <p>___ 22. Pair of Northwood Leaf and Beads Rosebowls. (Green and Purple with Floral Interior, Selling 2 X the Money.)</p> | <p>___ 23. Northwood Pastel Marigold Leaf & Beads Candy Dish. (Tri-Cornered; Pretty Pastel Iridescence!)</p> <p>___ 24. Northwood Green Leaf and Beads Nut Bowl. (Floral Interior.)</p> <p>___ 25. NORTHWOOD ELECTRIC BLUE BEADED CABLE ROSEBOWL. (SUPER ATTRACTIVE!)</p> <p>___ 26. Northwood Amethyst Wishbone ftd. Ruffled Bowl. (Ruffles & Rings Exterior, Nice Example.)</p> <p>___ 27. Northwood Amethyst Strawberry Plate. (8 3/4" Basketweave Exterior.)</p> <p>___ 28. Pair of Northwood Three Fruits Bowls. (Amethyst Three Fruits Medallion, and Purple Three Fruits with PCE.)</p> <p>___ 29. Northwood Purple G&C Banana Boat</p> <p>___ 30. NORTHWOOD WHITE POPPY SHOW RUFFLED BOWL. (8 3/4" FROSTY IRIDESCENCE.)</p> <p>___ 31. Four Piece Dugan Carnival Glass Lot. (Peach Opal Question Marks Stemmed Bon-Bon, Peach Opal Pulled Loops Vase, Marigold Target Vase, and Peach Opal Spiralex Vase.)</p> <p>___ 32. Dugan Peach Opal Nautilus Creamer. (Nice Opal Iridescence.)</p> <p>___ 33. Dugan Peach Opal Apple Blossom Twigs Bowl. (9" Low Ruffled.)</p> <p>___ 34. Dugan Four Piece Purple Carnival Glass Lot. (Grape Delight Rosebowl, Apple Blossom Round Bowl, Beaded Shell Mug, and Interior Smooth Rays Ruffled Sauce.)</p> <p>___ 35. DUGAN BLUE RAMBLER ROSE BULBOUS PITCHER. (NICE COLOR!)</p> <p>___ 36. DUGAN PURPLE ROUND BEADED BASKET. (NICE IRIDESCENCE!)</p> <p>___ 37. Dugan Purple Beaded Panels Stemmed Compote. (Tri-Cornered and Scarce Color.)</p> <p>___ 38. Dugan Two Piece Carnival Glass Lot. (White Fanciful Low Ruffled Bowl, and White Leaf Ray Nappy.)</p> <p>___ 39. Millersburg Marigold Blackberry Wreath Bowl. (3/1 Edge.)</p> <p>___ 40. MILLERSBURG GREEN WHIRLING LEAVES RUFFLED BOWL. (GORGEOUS IRIDESCENCE. 9 1/2" 6 RUFFLED BOWL W/ CRIMPED EDGE.)</p> <p>___ 41. Millersburg Marigold Diamonds Pitcher & Tumbler</p> <p>___ 42. Millersburg Green Little Stars Ruffled Bowl. (7 1/2".)</p> <p>___ 43. Three Millersburg Marigold Little Stars Bowls. (Two at 7 1/2" and one 7 3/4". Selling 3x the Money!)</p> <p>___ 44. Millersburg Marigold Swirled Hobnail Rosebowl. (Nice Iridescence.)</p> <p>___ 45. MILLERSBURG AMETHYST BIG FISH BOWL 3/1 EDGE. (8 3/4" NICE SATINY IRIDESCENCE.)</p> <p>___ 46. MILLERSBURG MARIGOLD TROUT & FLY BOWL 3/1 EDGE. (GREAT LOOKING BOWL. NICE SATINY IRIDESCENCE.)</p> <p>___ 47. Millersburg Marigold Trout & Fly Ruffled Bowl. (Nice and Desirable with Very Slight Wear.)</p> |
|---|---|

- ___48. **MILLERSBURG MARIGOLD PEACOCK MYSTERY BOWL 3/1 EDGE. (SATIN FINISH.)**
- ___49. Millersburg Amethyst Blackberry Wreath Bowl. (10" Six Ruffled with Radium Iridescence.)
- ___50. Millersburg Pastel Marigold Nesting Swan Bowl. (Super Iridescence with Blue in Center. Has 1/4" Flake on edge.)
- ___51. Millersburg Marigold Nesting Swan Ruffled Bowl. 9 3/4" Satiny iridescence.)
- ___52. Lot of Three Fenton Orange Tree Mugs. (Purple OT Standard Size Mug, Marigold OT Standard Size Mug, and Aqua OT Standard Size Mug.)
- ___53. Lot of Three Fenton Marigold Bowls. (7 5/8" Peacock Tail ICS Bowl, 9" Heart & Vine Ruffled Bowl, and 9" Captive Rose Ruffled Bowl. All with Nice Color.)
- ___54. Lot of Two Fenton Carnival Glass Pieces. (Dark Marigold Grape & Cable 9" ftd. Plate, and Marigold Dragon & Lotus Bowl with 3/1 Edge.)
- ___55. **FENTON RED RUFFLED HOLLY HAT. (NICE BASE COLOR!)**
- ___56. **FENTON RED FINE RIB STANDARD VASE. (9 1/2" TALL.)**
- ___57. Two Fenton Marigold Carnival Glass Bowls. (Marigold Two Flowers Ball ftd. Bowl and Marigold Chrysanthemum 10 3/4" ftd. ICS Bowl.)
- ___58. **FENTON BLUE HOLLY PLATE. 9 1/2" BEAUTIFUL EXAMPLE!**
- ___59. Fenton White Holly Plate. (9 3/4" Frosty with Great Iridescence.)
- ___60. **FENTON BLUE ORANGE TREE HATPIN HOLDER. (NICE WITH ATTRACTIVE HIGHLIGHTS!)**
- ___61. Two Piece Lot of Imperial Carnival Glass. (Imperial Light Amethyst Large Ruffled Scroll Embossed Bowl, and 10" Smoke Imperial Grape Large Flared Master Berry Bowl. Both have Very Nice Iridescence.)
- ___62. Two Piece Imperial Carnival Glass Lot. (Amethyst Pansy Ruffled 9" Bowl and Aqua Scroll Embossed 9 3/8" Flat Plate.)
- ___63. 5 Piece Lot of Marigold Imperial Carnival Glass. (Pair of Double Scroll Candlesticks, Imperial Grape Tumbler, Dark Marigold Acanthus Round Bowl and Imperial Paneled Compote.)
- ___64. Imperial Marigold 474 Ruffled Compote. (7" Scarce Size and Hard to Find.)
- ___65. Northwood Marigold Astral Gas Lamp Shade. (Eight Ruffled. Great Iridescence.)
- ___66. Northwood Blue Grape & Gothic Arches Creamer
- ___67. Northwood Green Singing Birds Mug
- ___68. Northwood Green Strawberry Plate. (8 7/8" with Plain Exterior. Nice Color.)
- ___69. Brockwitz Marigold Curved Star Lg. Celery Vase. (Nice Dark Color!)
- ___70. **FENTON BLUE TEN MUMS TANKARD. (NICE HIGHLIGHTS!)**
- ___71. **FENTON MARIGOLD TEN MUMS TANKARD. (NICE HIGHLIGHTS!)**
- ___72. **FENTON AMETHYST TEN MUMS BOWL 3/1 EDGE. (9 1/4" NICE SATIN IRIDESCENCE!)**
- ___73. **FENTON GREEN TEN MUMS RUFFLED BOWL. (10 1/4" NICE IRIDESCENCE!)**
- ___74. Dugan Blue Apple Blossom Twigs Plate. (8 3/4" Has Satin Iridescence.)
- ___75. **MILLERSBURG GREEN PEACOCK AT URN BOWL 3/1 EDGE. (10 1/4". SATINY IRIDESCENCE.)**
- ___76. Millersburg Marigold Rays & Ribbons Ruffled Bowl. (Radium Iridescence.)
- ___77. **PHOENIX MMG LACY DEWDROP COVERED BUTTER. (NICE IRIDESCENCE.)**
- ___78. **PHOENIX MMG LACY DEWDROP CREAMER. (NICE IRIDESCENCE.)**
- ___79. Pair of IG Imperial Marigold Dolphin Candlesticks. (10 1/4" Tall Very Desirable.)
- ___80. **IMPERIAL LIGHT AMETHYST PANSY LOW RUFFLED PLATE. (PRETTY IRIDESCENCE!)**
- ___81. Dugan Marigold with Opal Lined Lattice Vase. (9 1/2" Tall Has Spots of Opalescent in Glass. Very Attractive.)
- ___82. Dugan Purple Lined Lattice Vase. (9" Tall.)
- ___83. Two Piece Dugan Carnival Glass Lot. (6 1/2" Amethyst Cherries Crimped Plate and Dugan Amethyst Cherries 6" Ruffled Sauce.)
- ___84. **DUGAN LARGE PO PERSIAN GARDEN RUFFLED BOWL. (11". HAS NICE OPALESCENCE!)**
- ___85. **NORTHWOOD AQUA OPAL THREE FRUITS MEDALLION BOWL. (SPATULA FTD. HAS PLAIN EDGE. NICE IRIDESCENCE.)**
- ___86. **NORTHWOOD AQUA OPAL FOUR PILLARS VASE. (GREAT COLOR WITH PERFECT FEET!)**
- ___87. Northwood Elec. Blue Grape & Cable Bon-Bon. (Basketweave Exterior. Super Pretty!)
- ___88. Northwood Blue 8-Sided Bushel Basket. (Scarce Color!)
- ___89. Two Piece Northwood Purple Carnival Glass Lot. (Purple Round Bushel Basket and Grape Leaves Ruffled Bowl.)
- ___90. **NORTHWOOD PURPLE GRAPE & CABLE CRACKER JAR. (NICE IRIDESCENCE.)**
- ___91. **NORTHWOOD PURPLE GRAPE & CABLE DRESSER TRAY. (SUPER NICE!)**
- ___92. Fenton Blue Horsehead Medallion Ftd. Bowl.
- ___93. Fenton Marigold Horsehead Medallion Ftd. Rosebowl.
- ___94. Fenton Amethyst Vintage Grape small size Epergne.
- ___95. Fenton Amethyst Chrysanthemum Bowl. (9" Ruffled, Scarce Color.)
- ___96. Millersburg Amethyst Country Kitchen Creamer. (Minor Chips on Edge.)
- ___97. Millersburg Amethyst Peacock Tail Variant Compote. (Radium Iridescence.)
- ___98. Millersburg Marigold Two Piece Carnival Glass Lot. (Marigold Hanging Cherries ICS 7 1/4" Bowl and Marigold Hanging Cherries Spooner. Spooner has Internal Crack.)
- ___99. **MILLERSBURG AMETHYST BLACKBERRY WREATH BOWL. (7" TRI-CORNERED WITH RADIUM IRIDESCENCE.)**

- ___ 100. **MILLERSBURG BLUE BLACKBERRY WREATH 10" BOWL. (HAS SMALL FLAKE ON BACK EDGE, SCARCE AND DESIRABLE.)**
- ___ 101. **MILLERSBURG AMETHYST PEACOCK 5 PIECE BERRY SET. (WELL MATCHED WITH RADIUM IRIDESCENCE.)**
- ___ 102. **PAIR OF MILLERSBURG AMETHYST BERRY BOWLS. (5 1/4". EXCELLENT EXAMPLES WITH SUPER IRIDESCENCE.)**
- ___ 103. Dugan 6" White Target Vase. (Great Iridescence and Super Frosty.)
- ___ 104. Fenton Reverse Amberina Stippled Rays Sauce. (6 1/2" Nice Example.)
- ___ 105. **FENTON GREEN BUTTERFLY & BERRY MASTER BERRY BOWL. (HAS PLAIN INTERIOR, SCARCE VARIATION.)**
- ___ 106. Fenton Blue Fantail Lg Ruffled Bowl. (10" Super Attractive.)
- ___ 107. **IMPERIAL MARIGOLD 474 VASE. (10" SCARCE WITH GREAT IRIDESCENCE.)**
- ___ 108. **IMPERIAL LAVENDER PARLOR PANELS VASE. (11 3/4" TALL. GORGEOUS ITEM.)**
- ___ 109. Imperial Smoke Low Ruffled Pansy Plate. (9 1/8" Excellent Iridescence.)
- ___ 110. **NORTHWOOD SAPPHIRE G&C STIPPLED BOWL. (8 1/2" RIBBED EXTERIOR; VERY RARE AND DESIRABLE COLOR.)**
- ___ 111. **NORTHWOOD MARIGOLD ROSE SHOW VARIANT BOWL. (8 1/2" RUFFLED WITH RIBBED EXTERIOR.)**
- ___ 112. **NORTHWOOD BLUE DIAMOND POINTS SQUATTY VASE. (8" TALL WITH GREAT COLOR!)**
- ___ 113. Northwood Green G&C Plate. (8 3/4" with Plain Exterior.)
- ___ 114. Northwood Green Leaf & Beads Rosebowl. (Floral Interior. Nice Iridescence.)
- ___ 115. Millersburg Green Peacock Tail Variant Compote. (Radium Iridescence.)
- ___ 116. **FENTON AMBER HORSEHEAD JIP FTD. BOWL. (RARE COLOR)**
- ___ 117. Fenton Amber Poinsettia Ruffled Ftd. Sauce. (Scarce Color.)
- ___ 118. Fenton Marigold Fantail Ftd. Chop Plate. (10". One Foot Has Been Repaired.)
- ___ 119. Dugan Blue Beaded Basket. (Scarce Color.)
- ___ 120. **DUGAN PO GARDEN PATH VARIANT 6 3/8" PLATE. (SODA GOLD EXTERIOR. NICE OPALESCENCE.)**
- ___ 121. Dugan White Garden Path Variant 6 1/2" Plate. (Soda Gold Exterior. Frosty Iridescence.)
- ___ 122. Dugan White Garden Path Variant 6 1/2" Plate, White 6" Fishscale & Beads, and Dugan Marigold Fishscale & Beads 6 1/2" Plate.)
- ___ 123. Dugan White Grapevine Lattice 6 3/4" Plate. (Great Iridescence.)
- ___ 124. Pair of Dugan Carnival Glass Plates. (6 3/4" White Persian Garden w/ Pool of Pearls Exterior and Marigold Question Marks Ftd. Plate w/ Puzzle Exterior.)
- ___ 125. Dugan Blue Grape Delight Ftd. Nut Bowl.
- ___ 126. Two Piece Imperial Carnival Glass Lot. (9 1/2" Smoke Double Dutch Ftd Bowl with Floral & Optic Ext. and Smoke Windmill Relish Tray. Both with Nice Iridescence.)
- ___ 127. Two Piece Imperial Carnival Glass Lot. (Imperial Marigold 7 1/2" Star Spray Plate and Clambroth Star Medallion 10" Plate. Small Flake on Star Spray.)
- ___ 128. IG Imperial Marigold Flower & Scroll Vase. (10" Tall.)
- ___ 129. Four Piece Imperial Carnival Glass Lot. (Imperial Green Heavy Grape 8" Ruffled Bowl, Marigold 3/1 ICS 6 3/4" Bowl, Imperial Smoke Oval Berry Bowl and Green Flute Barry Bowl.)
- ___ 130. **IMPERIAL AMBER LOGANBERRY VASE. (NICE COLOR & IRIDESCENCE.)**
- ___ 131. **IMPERIAL ELEC. PURPLE SQUATTY BEADED BULLSEYE VASE. (7" TALL WITH 6 1/4" MOUTH OPENING. BEAUTIFUL IRIDESCENCE!)**
- ___ 132. Imperial Elec. Purple 5" Morning Glory Vase. (Another Super Example.)
- ___ 133. Imperial 7 1/2" Smoke Morning Glory Vase. (Nice Iridescence.)
- ___ 134. Imperial Two Piece Carnival Glass Lot. (Dark Marigold Morning Glory & Drape 5 1/4" Vase and Dark Marigold 5 3/4" Morning Glory Vase.)
- ___ 135. Imperial Three Piece Carnival Glass Lot. (Imperial Marigold Octagon 8" Ftd. Vase, Marigold Octagon Goblet and Marigold Octagon Sherbet.)
- ___ 136. Imperial Electric Purple Ripple 10 1/2" Vase
- ___ 137. **IMPERIAL CLEAR INTERIOR OPTIC SQUATTY VASE. (SIGNED WITH IRON CROSS. 4 7/8" TALL WITH 5" TOP DIAMETER.)**
- ___ 138. Imperial Three Piece Carnival Glass Lot. (Marigold Imperial Grape Nut Bowl, Marigold Imperial Grape 6" Plate and Marigold Imperial Star Medallion Ftd. Compote.)
- ___ 139. Imperial Dk. Marigold Flute and Cane Pitcher. (Scarce Shape.)
- ___ 140. **TWO PIECE IMPERIAL CARNIVAL GLASS LOT. (IMPERIAL DARK MARIGOLD OPTIC & BUTTONS CUP & SAUCER SIGNED WITH IRON CROSS AND IMPERIAL MARIGOLD TULIP & CANE CLARET. IMPERIAL MARIGOLD CHESTERFIELD TOOTHPICK HOLDER. (SIGNED WITH IRON CROSS. SCARCE AND DESIRABLE.**
- ___ 142. Imperial Dark Marigold Little Barrel Novelty. (Great Color and Iridescence.)
- ___ 143. Three Piece Imperial Carnival Glass Lot. (Imperial Marigold Snow Fancy Creamer, Marigold Interior Wide Panel Rosebowl and Unknown Maker Cobblestone? Flat Bowl.)
- ___ 144. Imperial Lime Green/Vaseline Heavy Grape Plate. (8". Glows.)

- ___ 145. **IMPERIAL PURPLE DIAMOND & SUNBURST 6 PC. WINE SET. (RARE & DESIRABLE SET. TOUGH TO FIND.)**
- ___ 146. Imperial Two Piece Carnival Glass Lot. (Purple Imperial Grape Water Carafe and Purple Imperial Grape Wine Glass.)
- ___ 147. Imperial Four Piece Carnival Glass Lot. (Purple Imperial Flute Breakfast Creamer & Sugar, Purple Imperial Flute Toothpick, and Purple Flute Berry Bowl.)
- ___ 148. Electric Purple Imperial Grape Ruffled Compote. (Excellent Iridescence.)
- ___ 149. Six Imperial Purple Zippered Loop Berry Bowls. (Selling as Set.)
- ___ 150. **IMPERIAL ELECTRIC PURPLE STAR OF DAVID BOWL. (9" RUFFLED.)**
- ___ 151. **IMPERIAL ELECTRIC PURPLE COBBLESTONE BOWL. (8 7/8" RUFFLED. SUPER BOWL!)**
- ___ 152. Imperial Purple Shell & Sand Bowl. (7 1/2" Deep Ruffled. Very Nice.)
- ___ 153. Imperial Purple Pansy Bowl. (9" Ruffled with Nice Iridescence.)
- ___ 154. Imperial Smoke Fashion Tumbler. (Scarce & Nice.)
- ___ 155. Imperial Purple Grape LG. Ruffled Bowl. (Nice Iridescence.)
- ___ 156. Imperial Teal Blue Open Rose Round Bowl. (Odd Base Color.)
- ___ 157. Two Piece Imperial Carnival Glass Lot. (Imperial Violet Blue Lustre Rose Ftd Fernery and Olive Open Rose Rose Bowl.)
- ___ 158. Imperial Two Piece Carnival Glass Lot. (Imperial Amber Pansy Dresser Tray and Imperial Clambroth Frosted Block Square Plate.
- ___ 159. Three Piece Imperial Carnival Glass Lot. (Imperial Green Open Rose 9" Plate, Green Imperial Grape 9" Plate and Green Imperial Grape 7" Plate.)
- ___ 160. **U.S. GLASS HONEY AMBER COSMOS & CANE TABLE SET (SIX PIECE AND WELL-MATCHED SET.)**
- ___ 161. **U.S. GLASS HONEY AMBER COSMOS & CANE WHIMSY SQUARE BERRY BOWL. (3 3/4" x 4".)**
- ___ 162. Three Piece U.S. Glass Carnival Glass Lot. (Honey Amber Cosmos and Cane Tumbler and White Palm Beach / Gooseberry Berry Bowl, and White Cosmos and Cane Berry Bowl.)
- ___ 163. **U.S. GLASS MARIGOLD/CLEAR GOOFUS PALM BEACH BOWL. (TRI-CORNERED 6 1/2" BOWL.)**
- ___ 164. **U.S. GLASS MARIGOLD/CLEAR GOOFUS PALM BEACH WHIMSY BOWL. (5 1/4" FOUR-SIDED WHIMSY BOWL.)**
- ___ 165. **CAMBRIDGE AMETHYST INVERTED STRAWBERRY LG COMPOTE. (RARE AND DESIRABLE WITH GREAT IRIDESCENCE.)**
- ___ 166. Cambridge Amethyst Inverted Strawberry Berry Bowl. (4 1/2".)
- ___ 167. **CAMBRIDGE LT. MARIGOLD LG BUZZ SAW CRUET/STOPPER.**
- ___ 168. Cambridge Marigold Near Cut Souvenir Mug. (Stenciled Souvenir Kenyon Minn.)
- ___ 169. European Amethyst Pods & Posies LG ICS Bowl.
- ___ 170. Two Piece Sowerby Carnival Glass Lot. (Amethyst Pineapple Creamer and Amethyst Pineapple Ftd. Bowl.)
- ___ 171. **RIIHIMAKI DARK MARIGOLD DRAPERY VARIANT PITCHER.**
- ___ 172. Jain Dark Marigold Elephant Vase. (6 5/8" Tall.)
- ___ 173. Two Piece Westmoreland Marigold Carnival Glass Lot. (Marigold Estate Mug and Little Beads Ruffled Sauce.)
- ___ 174. Westmoreland MMG Scales Bowl. (8 1/2".)
- ___ 175. Westmoreland Amethyst Corinth Vase. (10 1/2" Tall.)
- START OF SECOND SESSION
SATURDAY, MARCH 23, 2019
LOTS 176-462**
- ___ 176. Crown Crystal Purple Butterfly & Bells Compote.
- ___ 177. **DUGAN? MARIGOLD POINSETTIA & HOLLY RUFFLED COMPOTE. (ATTRIBUTED TO DUGAN? RARE PATTERN. FIRST ONE WE'VE SOLD.)**
- ___ 178. **EUROPEAN MARIGOLD GRAPE MEDALLION 4 3/4" PLATE. (NEVER SEEN BEFORE, ODD PATTERN & SIZE.)**
- ___ 179. Pair of Dugan Stippled Estate Vases. (Amethyst and Aqua. Both Are Pinched In. (Selling 2 X the money.)
- ___ 180. **DUGAN ELECTRIC PURPLE DOGWOOD SPRAYS BOWL. (TRI-CORNERED WITH CRIMPED EDGE. STUNNING PIECE. HAS TWO NICKS UNDERNEATH BOTTOM OF BASE.)**
- ___ 181. **DUGAN PURPLE FLOWERS & FRAMES BOWL. (TRI-CORNERED WITH CRIMPED EDGE. 9 1/4". SCARCE AND DESIRABLE.)**
- ___ 182. Dugan Purple Six Petals Bowl. (Tri-Cornered 7 3/4".)
- ___ 183. Dugan Purple Wishbone & Spades Plate. (6 1/2" with Basketweave Exterior.)
- ___ 184. Dugan Purple Petal and Fan Crimped Plate. (6 1/2".)
- ___ 185. **DUGAN AMETHYST RAMBLER ROSE PITCHER & TUMBLER. (SCARCE COLOR WITH NICE IRIDESCENCE.)**
- ___ 186. Dugan Electric Purple Grape Delight Rose Bowl. (Excellent Iridescence.)
- ___ 187. Two Piece Dugan Carnival Glass lot. (Amethyst Pastel Swan and Circle Scroll Berry Bowl.)
- ___ 188. Dugan Purple Nautilus Open Sugar. (Nice Iridescence.)
- ___ 189. Dugan Electric Purple Bellflower Bowl. (Crimped Ruffled Edge. Really Attractive.)
- ___ 190. Dugan Purple Amaryllis Compote. (Tri-Cornered Ruffled. Has Nice Satin Finish.)
- ___ 191. Dugan Purple Interior Rays Bowl. (Large Ruffled with Jeweled Heart Exterior. Absentee Farmyard, with Gorgeous Color.)
- ___ 192. **DUGAN PASTEL LAVENDER LATTICE & POINTS VASE. (NEAT PRETTY PIECE. 6 3/4" TALL.)**

- ___ 193. Three Piece Dugan Carnival Glass Lot. (Marigold Persian Garden 6" Plate, Marigold Question Marks Ftd. Plate, and Marigold Apple Blossom Twigs Bowl w/ 3/1 Edge.)
- ___ 194. Three Piece Dugan Carnival Glass Lot. (Marigold Storks & Rushes Basket, Storks & Rushes Hat and Twigs Bud Vase.)
- ___ 195. **DUGAN SAPPHIRE/AQUA DOUBLE STEM ROSE BOWL. (DOMED FTD. WITH NICE IRIDESCENCE.)**
- ___ 196. **DUGAN AMETHYST FIVE HEARTS DOMED FTD. BOWL. (7 1/2" SATIN IRIDESCENCE.)**
- ___ 197. Dugan White Double Stem Rose Domed Ftd. Plate. (Frosty and Nice.)
- ___ 198. Two Piece Dugan Carnival Glass Lot. (White Fanciful 9" Plate and White Persian Garden 6 3/4" Plate.)
- ___ 199. Pair of Dugan Constellation Ruffled Compotes. (1 White and 1 Marigold.)
- ___ 200. **DUGAN DARK MARIGOLD HEAVY IRIS JIP HAT. (EXCELLENT IRIDESCENCE.)**
- ___ 201. Dugan PO Cherries 5 Piece Ice Cream Set. (Scarce Set with Good Color and Opalescent.)
- ___ 202. Three Piece Dugan PO Carnival Glass Lot. (Interior Swirl Pinched in Rosebowl, Cherries Ruffled Sauce and Persian Garden Ruffled Sauce.)
- ___ 203. Dugan Marigold Golden Harvest 8 Piece Wine Set. (Scarce Set.)
- ___ 204. Dugan Purple Petal & Fan LG Ruffled Bowl. (Jeweled Heart Exterior.)
- ___ 205. **MILLERSBURG GREEN NESTING SWAN WHIMSY SPITTOON. (EXTREMELY RARE ONE OF A KIND! HAS MANUFACTURER CHECK IN BASE. ONCE OWNED BY ROSE PRESNICK.)**
- ___ 206. **RARE MILLERSBURG MARIGOLD FLAT DIAMOND & FAN ICS BOWL. (DIAMOND AND FAN EXTERIOR. PLAIN INTERIOR, NESTING SWAN BLANK. RADIUM IRIDESCENCE.)**
- ___ 207. Millersburg Amethyst Nesting Swan Bowl. (Gorgeous Radium Iridescence! Very Desirable.)
- ___ 208. **MILLERSBURG PASTEL MARIGOLD NESTING SWAN BOWL. (ANOTHER EXCELLENT EXAMPLE WITH RADIUM IRIDESCENCE.)**
- ___ 209. Millersburg Green Nesting Swan Bowl. (Has Nice Satin Finish.)
- ___ 210. **MILLERSBURG MARIGOLD MULTI FRUITS & FLOWERS PUNCH SET. (SEVEN PIECE SET WITH NICE IRIDESCENCE. HAS ONE LIGHT PUNCH CUP.)**
- ___ 211. Millersburg Green Mayan ICS Bowl. (8" and Great Iridescence.)
- ___ 212. Millersburg Green Cosmos ICS Bowl. (6" Nice Iridescence.)
- ___ 213. Millersburg Marigold Feather & Heart Pitcher & Tumbler
- ___ 214. Millersburg Amethyst Feather & Heart Tumbler
- ___ 215. **MILLERSBURG GREEN ACORN COMPOTE. (VERY RARE WITH BEAUTIFUL COLOR AND IRIDESCENCE.)**
- ___ 216. **MILLERSBURG GREEN LEAF & LITTLE FLOWERS COMPOTE. (RADIUM IRIDESCENCE.)**
- ___ 217. Millersburg Green Peacock Tail Variant Compote. (Ruffled with Radium Iridescence.)
- ___ 218. Millersburg Amethyst Boutonniere Compote. (Ruffled with Radium Iridescence.)
- ___ 219. Millersburg Amethyst Marilyn Tumbler
- ___ 220. **MILLERSBURG AMETHYST FLOWERING VINE COMPOTE. (FANTASTIC!! ONE OF THE BEST!!!!!! VERY FEW KNOWN.)**
- ___ 221. **MILLERSBURG AMETHYST ROSALIND COMPOTE. (VERY PRETTY.)**
- ___ 222. **MILLERSBURG AQUA ROSALIND BOWL. (10 1/4" RUFFLED WITH NICE IRIDESCENCE. HAS MANUFACTURER HEAT CHECK IN COLLAR BASE.)**
- ___ 223. **MILLERSBURG AMETHYST POPPY COMPOTE. (RADIUM WITH GOOD IRIDESCENCE.)**
- ___ 224. Millersburg Amethyst Squatty Tulip Scroll Vase. (6 3/4" Tall. Beautiful Radium Iridescence.)
- ___ 225. **MILLERSBURG AMETHYST RAYS & RIBBONS SQUARE BOWL. (8" x 8". RADIUM IRIDESCENCE.)**
- ___ 226. Millersburg Amethyst Rays & Ribbons Bowl. (8 1/4" with Radium Iridescence.)
- ___ 227. Millersburg Green Rays & Ribbons Bowl. (9 3/4" Round, Flat & Flared.)
- ___ 228. Millersburg Green Primrose Bowl. (8 7/8" Ruffled.)
- ___ 229. Millersburg Marigold Primrose Bowl. (3/1 Edge. Nice Iridescence.)
- ___ 230. **MILLERSBURG CRYSTAL PALM WREATH SPITTOON. (MADE FROM MASTER BERRY BOWL. MEASURES 7" x 3 3/4".)**
- ___ 231. Millersburg Frosted Hobstar & Feather Spade Nappy. (Has Sun Colored Tint.)
- ___ 232. Millersburg Crystal Hobstar & Feather Nappy. (Club Shaped.)
- ___ 233. Millersburg Crystal Hobstar & Feather Nappy. (Diamond Shaped.)
- ___ 234. Millersburg Frosted Hobstar & Feather ICS Bowl. (5 1/2".)
- ___ 235. Millersburg Crystal Hobstar & Feather Tumbler.
- ___ 236. Millersburg Crystal Hobstar & Feather Compote. (Round Top.)
- ___ 237. Millersburg Crystal Hobstar & Feather Compote. (Ruffled.)
- ___ 238. Millersburg Crystal Country Kitchen ICS Bowl. (7 3/4".)
- ___ 239. Cambridge Crystal Buzz Saw Cruet. (Large Size with Stopper.)
- ___ 240. Millersburg Crystal Ohio Star Tumbler. (4" Tall.)
- ___ 241. Millersburg Crystal Ohio Star Olive Tray. (4 1/8" X 6 1/4".)
- ___ 242. Millersburg Crystal Ohio Star Round Compote. (4 3/4" Tall.)
- ___ 243. Millersburg Crystal Ohio Star Vase. (9 1/2".)
- ___ 244. Millersburg Crystal Hobstar & Feather Tankard. (Frosted Tankard Water Pitcher.)



Lot 456



Lot 330



Lot 331



Lot 332



Lot 333



Lot 334



Lot 192



Lot 280



Lot 335



Lot 340



Lot 360



Lot 342



Lot 297



Lot 365



Lot 370



Lot 375



Lot 377



Lot 381



Lot 393



Lot 310



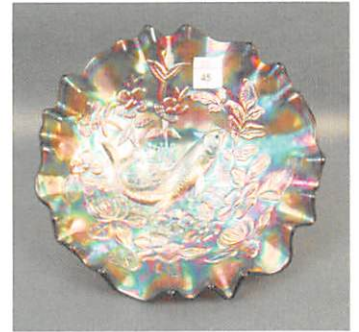
Lot 50



Lot 178



Lot 449



Lot 45



Lot 256



Lot 281



Lot 445



Lot 46



Lot 177



Lot 204



Lot 207



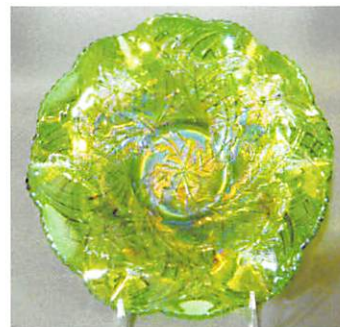
Lot 225



Lot 228



Lot 254



Lot 251



Lot 145



Lot 270



Lot 435



Lot 320



Lot 321

- ___ 245. **MILLERSBURG CRYSTAL OHIO STAR WATER CARAFE. (HAS SLIGHT PURPLE EFFECT.)**
- ___ 246. Millersburg Marigold Potpourri 9 1/2" Bowl. (Ruffled with lovely Radium Iridescence.)
- ___ 247. **MILLERSBURG AMETHYST HOBNAIL SWIRL SPITTOON. (ATTRACTIVE SPITTOON.)**
- ___ 248. Millersburg Amethyst Hobnail Swirl 10" Vase. (Good Looking Vase.)
- ___ 249. Millersburg Amethyst Hobnail Swirl Rosebowl.
- ___ 250. **MILLERSBURG GREEN MORNING GLORY TANKARD. (EXTREMELY RARE!! HAS BEAUTIFUL IRIDESCENCE. NOT MANY KNOWN. HAS VERY SMALL MANUFACTURER BLISTER INSIDE THROAT OF TANKARD, WHO CARES?!)**
- ___ 251. Millersburg Green Whirling Leaves Bowl. (9 1/2" Ruffled with Pretty Iridescence.)
- ___ 252. Millersburg Green Hobstar & Feather Giant Rosebowl. (Beautiful iridescence. Has been broken and re-glued at base, but a real beauty.)
- ___ 253. Millersburg Amethyst Whirling Leaves Bowl. (9 1/2" Ruffled. Lots of Beautiful Iridescence.)
- ___ 254. Millersburg Green Zig Zag Bowl. (Has 3/1 Edge Measures 9 3/4". Nice iridescence.)
- ___ 255. **MILLERSBURG AMETHYST PERFECTION WATER PITCHER. (WITH RUFFLED TOP. VERY RARE AND GORGEOUS PITCHER.)**
- ___ 256. **MILLERSBURG AMETHYST PERFECTION TUMBLER. (MATCHES PITCHER VERY WELL. BEAUTIFUL TUMBLER.)**
- ___ 257. Millersburg Green Grape Wreath 7" Bowl. (Ruffled with Feathered Leaf Interior. Radium Iridescence.)
- ___ 258. Millersburg Amethyst Grape Wreath Bowl. (6 1/2" Crimped with Feathered Interior.)
- ___ 259. Millersburg Marigold Grape Wreath Bowl. (6 1/2" with Ruffled Crimped Edge.)
- ___ 260. **MILLERSBURG AMETHYST WILD ROSE KEROSENE LAMP. (MID-SIZE. HAS BEAUTIFUL IRIDESCENCE.)**
- ___ 261. Millersburg Marigold Holly Sprig ICS Bowl. (Super Radium Iridescence.)
- ___ 262. Millersburg Green Holly Whirl Bowl. (9 3/4" Ruffled.)
- ___ 263. Millersburg Marigold Holly Whirl Card Tray. (Two Sides Up. Isaac Benesch 54th Advertising.)
- ___ 264. Millersburg Marigold Holly Whirl Nappy. (Handled; Tri-Cornered.)
- ___ 265. **MILLERSBURG AMETHYST GAY NINETIES WATER PITCHER. (HAS HAIRLINE HORSESHOE CRACK AROUND HANDLE BASE. STILL A BEAUTIFUL EXAMPLE.)**
- ___ 266. **MILLERSBURG AMETHYST GAY NINETIES TUMBLER. (MATCHES PITCHER WELL; VERY NICE IRIDESCENCE.)**
- ___ 267. Millersburg Amethyst Grape Wreath Sauce. (6 1/8" Crimped with Clover Leaf Interior. Wonderful Radium Iridescence.)
- ___ 268. Millersburg Green Grape Wreath Sauce. (Deep Crimped Edge 5 1/4". Pretty Radium Iridescence.)
- ___ 269. Millersburg Amethyst Grape Wreath Sauce. (ICS with Clover & Leaf Interior. Nice Radium Iridescence.)
- ___ 270. **NORTHWOOD AQUA OPAL CORN VASE W/ STALK BASE. (EXTREMELY RARE ITEM. HAS BEEN BROKEN AND GLUED AT BASE. (GREAT OPPORTUNITY TO OWN ONE. COLOR IS BEAUTIFUL.)**
- ___ 271. Northwood Lime Ice Green Corn Vase. (Has Stalk Base. Good iridescence.)
- ___ 272. **NORTHWOOD GREEN TORNADO VASE. (TRI-CORNERED TOP. LOTS OF PRETTY IRIDESCENCE.)**
- ___ 273. Northwood Purple Fine Rib Squatty Vase. (6 1/4" Tall. Beautiful Iridescence.)
- ___ 274. Northwood White Daisy & Drape Vase.
- ___ 275. **NORTHWOOD WHITE THIN RIB MID-SIZE VASE. (12 1/3" TALL; LOTS OF PASTEL IRIDESCENCE.)**
- ___ 276. Northwood Green Diamond Point Squatty Vase. (6 3/4" Tall; Silvery Iridescence.)
- ___ 277. Northwood Russet Green Thin Rib Vase.
- ___ 278. Northwood Blue Beaded Cable Rosebowl. (Has Electric Blue Highlights.)
- ___ 279. Two Piece Northwood Lot. (Amethyst Fine Cut & Roses Rose Bowl and Green Acorn Burrs Berry Bowl.)
- ___ 280. **NORTHWOOD PURPLE TOWN PUMP. (HAS VERY NICE AND EVEN IRIDESCENCE.)**
- ___ 281. **NORTHWOOD AMETHYST WISHBONE TWO-PIECE EPERGNE. (VERY NICE IRIDESCENCE.)**
- ___ 282. Northwood Purple Blossom Time Compote. (Ruffled Top.)
- ___ 283. Two Piece Lot of Northwood Carnival Glass. (N Amethyst Raspberry Compote, and Amethyst Daisy & Plume Compote with Fern Interior.)
- ___ 284. Northwood Marigold Hearts & Flowers Compote.
- ___ 285. **NORTHWOOD MARIGOLD PEACOCK AT THE FOUNTAIN PUNCH SET. (NICE SET. WELL MATCHED, AND VERY ATTRACTIVE ITEM.)**
- ___ 286. Northwood Pastel Marigold Peacocks Bowl PCE.
- ___ 287. **NORTHWOOD MARIGOLD POPPY SHOW PLATE. (9 3/8", HAS NICE IRIDESCENCE.)**
- ___ 288. Northwood Purple Wild Strawberry Ruffled Bowl. (9 3/4" with Plain Exterior. Good Iridescence.)
- ___ 289. Northwood Green Wild Strawberry Handgrip Plate. (7 1/2" with Basketweave Exterior.)
- ___ 290. **NORTHWOOD AQUA OPAL THREE FRUITS MEDALLION FTD. BOWL. (8 5/8" RUFFLED AND STIPPLED WITH PASTEL IRIDESCENCE.)**
- ___ 291. Northwood Green Fruits & Flowers Plate. (7 3/4" with Basketweave Exterior.)
- ___ 292. Northwood Purple Three Fruits Stippled PCE Bowl. (8 3/4" with Ribbed Exterior. Good Fruit and Nice Iridescence.)
- ___ 293. Northwood Blue Peach Tumbler. (Electric Highlights.)
- ___ 294. Two Piece Northwood Carnival Glass Tumbler Lot. (Electric Blue Peacock at the Fountain and Amethyst Grape & Cable.)

- ___ 295. **NORTHWOOD BLUE SUNFLOWER BOWL. (FTD. AND RUFFLED. HAS ELECTRIC HIGHLIGHTS!)**
- ___ 296. **NORTHWOOD ICE GREEN GRAPE ARBOR HAT. (RUFFLED WITH BEAUTIFUL PASTEL IRIDESCENCE.)**
- ___ 297. **NORTHWOOD PURPLE ORIENTAL POPPY 6 PC. WATER SET.**
- ___ 298. Northwood Purple G&C Master Punch Bowl & Base. (Very Pretty. Has One Chipped Point and Cracked Base.)
- ___ 299. Northwood Purple G&C Shot Glass. (Average Iridescence.)
- ___ 300. **NORTHWOOD ICE GREEN G&C LARGE ICE CREAM BOWL. (VERY PRETTY PASTEL IRIDESCENCE.)**
- ___ 301. Northwood Ice Green G&C ICS 6" Sauce.
- ___ 302. Northwood Marigold G&C Lg. ICS Bowl. (Very Pretty Iridescence.)
- ___ 303. Northwood Purple G&C Pin Tray.
- ___ 304. Northwood Amethyst G&C Cologne Bottle. (Has Banded Stopper.)
- ___ 305. **NORTHWOOD DARK MARIGOLD G&C PERFUME W/ STOPPER. (SUPER COLOR AND IRIDESCENCE.)**
- ___ 306. Northwood Marigold G&C Covered Humidor. (Nice Iridescence.)
- ___ 307. **NORTHWOOD GREEN G&C "OLD ROSE DISTILLERY PLATE."**
- ___ 308. Northwood Amethyst G&C Fruit Bowl. (Footed and Ruffled. Above Average Iridescence.)
- ___ 309. Jenkins (Kokomo Ind?) Lg Handled Basket. (Intaglio Etched Flower. Measures 14" Tall.)
- ___ 310. **CONSOLIDATED MARIGOLD ROSES & RUFFLES GWTW LAMP. (HAS CHECK IN TOP GLOBE, VERY RARE)**
- ___ 311. **IMPERIAL CRYSTAL ZIPPERED HEART FTD. PITCHER.**
- ___ 312. Imperial Crystal Zipper Heart Tumbler
- ___ 313. **IMPERIAL CRYSTAL ZIPPERED HEART 9 PC. PUNCH SET.**
- ___ 314. Imperial Crystal Zippered Heart Handled Nappy
- ___ 315. **IMPERIAL CRYSTAL ZIPPERED HEART LG. CONSOLE BOWL. (RUFFLED TOP MEASURES 12 1/2".)**
- ___ 316. **IMPERIAL CRYSTAL ZIPPERED HEART GIANT FTD. ROSEBOWL.**
- ___ 317. Imperial Zippered Heart Small Ftd. Rosebowl. (5" Tall.)
- ___ 318. **IMPERIAL MARIGOLD ZIPPER LOOP FINGER LAMP. (RARE ITEM)**
- ___ 319. Imperial Purple Ripple Standard Size Vase.
- ___ 320. **MILLERSBURG BLUE HANGING CHERRIES SAUCE WITH 3/1 EDGE. (6 1/8"; HAS SATINY IRIDESCENCE.)**
- ___ 321. **MILLERSBURG AMETHYST HANGING CHERRIES SAUCE. 5 3/4" RUFFLED WITH HOBNAIL EXTERIOR; SATINY IRIDESCENCE.)**
- ___ 322. Millersburg Amethyst Hanging Cherries Lg. ICS Bowl. (10" Pretty Satin iridescence.)
- ___ 323. **MILLERSBURG MARIGOLD HANGING CHERRIES TABLE SET. (6 PIECE. SATINY IRIDESCENCE, AND WELL MATCHED.)**
- ___ 324. Two Piece Millersburg Carnival Glass Lot. (Marigold Hanging Cherries 7" ICS Bowl and Light Marigold Hanging Cherries Round Sauce.)
- ___ 325. **MILLERSBURG LT. MARIGOLD LITTLE STARS LARGE ICS BOWL. (10" SATINY IRIDESCENCE.)**
- ___ 326. **MILLERSBURG AMETHYST LITTLE STARS RUFFLED BOWL. (NICE WITH SATINY IRIDESCENCE. 7 1/2")**
- ___ 327. Millersburg Green Little Stars Ruffled Bowl. (7 3/8" Nice Satiny Iridescence.)
- ___ 328. Millersburg Marigold Little Stars Ruffled Bowl. (7 1/2" with Satiny Iridescence.)
- ___ 329. Millersburg Marigold Diamonds Pitcher & Tumbler. (Well Matched.)
- ___ 330. **MILLERSBURG GREEN MANY STARS LG. ICS BOWL. (9" RADIUM IRIDESCENCE, AND VERY ATTRACTIVE.)**
- ___ 331. **MILLERSBURG AMETHYST MANY STARS BOWL. (10 1/2" RUFFLED; 5-POINTED STAR. RADIUM IRIDESCENCE.)**
- ___ 332. **MILLERSBURG MARIGOLD VINTAGE GRAPE LG. ICS BOWL. (10" WITH HOBNAIL EXTERIOR. VERY PRETTY WITH SATINY IRIDESCENCE.)**
- ___ 333. **MILLERSBURG AMETHYST COURTHOUSE ICS BOWL. (7", BEAUTIFUL RADIUM IRIDESCENCE.)**
- ___ 334. Millersburg Amethyst Isaac Benesch Ruffled Bowl. (6" Ruffled Satin iridescence.)
- ___ 335. **MILLERSBURG AMETHYST STRAWBERRY WREATH SQUARE BOWL. (8 1/2" RADIUM IRIDESCENCE.)**
- ___ 336. Millersburg Amethyst Strawberry Ruffled Bowl. (Crimped Edge. 8 1/2" Radium Iridescence.)
- ___ 337. Millersburg Marigold Strawberry Compote. (6 1/2" Ruffled with Radium Iridescence.)
- ___ 338. Millersburg Marigold Strawberry Bowl. (6 3/4" Ruffled with Radium Iridescence.)
- ___ 339. Millersburg Marigold Grape Wreath Variant Bowl. (Ruffled with 3/1 Edge 8 1/2" Radium Iridescence.)
- ___ 340. **MILLERSBURG AMETHYST TRACERY BON-BON, (FOUR-SIDED SQUARE WITH SATINY IRIDESCENCE.)**
- ___ 341. **MILLERSBURG OLIVE GREEN NIGHT STARS BON-BON. (ODD COLOR.)**
- ___ 342. **MILLERSBURG MARIGOLD ROSES AND FRUIT BON-BON. (RADIUM IRIDESCENCE AND ATTRACTIVE.)**
- ___ 343. **MILLERSBURG AMETHYST SEACOAST PIN TRAY. (REALLY NICE IRIDESCENCE.)**
- ___ 344. 1973 Amethyst Holmes County Souvenir Plate. (8" Country Antique Festival 1973 Millersburg Ohio.)
- ___ 345. **FENTON MARIGOLD DRAGON & STRAWBERRY LG. ICS BOWL. (SUPER IRIDESCENCE; MEASURES 8 5/8")**

- ___ 346. Five Piece Fenton Marigold Carnival Glass Lot. (Fenton Paneled Apple Creamer & Sugar, Ribbed Ftd. Vase, Persian Medallion Small Plate, & Holly Ruffled Compote.)
- ___ 347. Fenton Dark Marigold Daisy Cut Bell.
- ___ 348. Two Piece Fenton Carnival Glass Lot. (Blue & Amethyst Blackberry Miniature Compotes.)
- ___ 349. Three Piece Fenton Marigold Carnival Glass Lot. (Rustic Standard Vase, Plume Panels Vase, & Waterlily & Cattail Toothpick Holder.)
- ___ 350. **FENTON MARIGOLD KITTENS CUP & SAUCER.**
- ___ 351. Fenton Marigold Kittens Cereal Round Bowl.
- ___ 352. Fenton Marigold Kittens Ruffled Bowl.
- ___ 353. Fenton Marigold Kittens Banana Dish. (Two Sides Up.)
- ___ 354. Fenton Marigold Kittens Ruffled Toothpick Holder.
- ___ 355. **FENTON SAPPHIRE FINE RIB VASE. (9 1/4" TALL.)**
- ___ 356. Two Piece Fenton Marigold Carnival Glass Lot. (Lions ICS Bowl and Lotus & Grape Ftd. Bowl.)
- ___ 357. Two Piece Fenton Amethyst Carnival Glass Lot. (Fluffy Peacock Tumbler and Persian Medallion ICS Sauce.)
- ___ 358. Fenton Green Lotus & Poinsettia Ftd. Ruffled Sauce. (6")
- ___ 359. Fenton Vaseline Lotus & Poinsettia Ftd. Sauce. (6" Ruffled.)
- ___ 360. **FENTON AMBER/ ROOTBEER PINECONE PLATE. (NEAT COLOR; EXCELLENT IRIDESCENCE. VERY FLAT, MEASURES 7 1/2".)**
- ___ 361. Two Piece Fenton Carnival Glass Lot. (Green 6 1/2" Pine Cone Plate & Blue 6 1/8" Pine Cone Plate.)
- ___ 362. **FENTON BLUE HORSEHEAD MEDALLION PLATE. (7 3/4" PLATE, VERY SCARCE.)**
- ___ 363. Fenton Vaseline Horsehead Medallion Nut Bowl. (Ftd. Flared Nut Bowl 6 1/2". Has Spotty Iridescence.)
- ___ 364. Fenton Green Horsehead Medallion Bowl. (Ftd. Ruffled 7 3/4".)
- ___ 365. **FENTON BLUE DAISY BON-BON. (SCARCE; TWO HANDLED. DON'T SEE MANY: VERY RARE)**
- ___ 366. **FENTON BLUE HEART & VINE PLATE. (FANTASTIC; 9 1/4". SUPER IRIDESCENCE.)**
- ___ 367. **FENTON BLUE PEACOCK @ URN PLATE. (9 1/4". VERY NICE.)**
- ___ 368. **FENTON AMETHYST CAPTIVE ROSE PLATE. (9 1/4")**
- ___ 369. Fenton Amethyst Holly Plate. (9 1/2".)
- ___ 370. **FENTON BLUE LOTUS & POINSETTIA ICS BOWL. (FANTASTIC; FTD. 9 1/2" BOWL. OUTSTANDING IRIDESCENCE!)**
- ___ 371. Maker? Marigold Vintage Grape Bowl. (Ruffled Crimped Edge Bowl 8 1/2". Some Say Millersburg, Not Sure?)
- ___ 372. Millersburg Marigold Blackberry Wreath Bowl. (8 1/2" Satin Iridescence.)
- ___ 373. Millersburg Amethyst Blackberry Wreath Bowl. (8 3/4" Ruffled Radium Iridescence.)
- ___ 374. Millersburg Amethyst Blackberry Wreath Sauce. (6" with 3/1 Edge.)
- ___ 375. **MILLERSBURG BLUE BLACKBERRY WREATH LG. BOWL. (10 3/4" RUFFLED WITH SATIN IRIDESCENCE.)**
- ___ 376. Millersburg Amethyst Blackberry Wreath ICS Bowl. (Large 10". Beautiful Radium Iridescence.)
- ___ 377. **MILLERSBURG GREEN BLACKBERRY WREATH 6 1/4" PLATE. (LOW RUFFLED PLATE WITH SATINY IRIDESCENCE.)**
- ___ 378. Millersburg Green Blackberry Wreath Sauce. (6" with 3/1 Edge with Satin Iridescence.)
- ___ 379. Millersburg Green Blackberry Wreath Sauce. (6" Crimped Edge.)
- ___ 380. Millersburg Amethyst Blackberry Wreath ICS Bowl. (10" Radium Iridescence.)
- ___ 381. Millersburg Amethyst Grape Wreath Sauce. (6" ICS Scalloped Edge Four Leaf Clover with Radium Iridescence.)
- ___ 382. Millersburg Green Holly Sprig Card Tray. (Two-Sided Card Tray with Radium Iridescence.)
- ___ 383. Millersburg Amethyst Holly Sprig Nappy. (Tri-Cornered; Handled with Radium Iridescence.)
- ___ 384. Millersburg Amethyst Holly Sprig Nappy. (Tri-Cornered with Radium Iridescence.)
- ___ 385. **MILLERSBURG MARIGOLD HOLLY SPRIG SQUARE BOWL. (FOUR-SIDED 6 1/2" x 6 3/4".)**
- ___ 386. Millersburg Dk. Marigold Holly Sprig ICS Sauce. (5 3/4" Dark and Pretty, Radium Iridescence.)
- ___ 387. Millersburg Marigold Holly Sprig Rose Bowl. (Light Clear to Marigold 5 1/8" Turned Rose Bowl.)
- ___ 388. Millersburg Green Holly Sprig Bowl. (Tri-Cornered 6 1/2" Bowl. Radium Iridescence and Nice.)
- ___ 389. Millersburg Amethyst Holly Sprig Bon-Bon. (Light Amethyst Two Handled with Radium Iridescence.)
- ___ 390. **MILLERSBURG EMERALD GREEN BIG FISH BOWL. (FANTASTIC, RARE, 6 RUFFLED WITH CRIMPED EDGE. BLUE IRIDESCENCE. OUTSTANDING.)**
- ___ 391. Millersburg Marigold Trout & Fly Bowl. (9" Satin Iridescence with 3/1 Edge. Nice Iridescence.)
- ___ 392. **MILLERSBURG MARIGOLD SEAWEED ICS BOWL. (8 1/2" WITH SATIN IRIDESCENCE. HAS MINOR POINT SCUFFS. NICE IRIDESCENCE.)**
- ___ 393. Millersburg Amethyst Peacock @ Urn Mystery Bowl. (8 3/4" with Pretty Satin iridescence.)
- ___ 394. Millersburg Green Peacock @ Urn Mystery Bowl. (9" Ruffled with Good Even Satin Iridescence.)
- ___ 395. Millersburg Amethyst Peacock Lg. Bowl. (10" Low Ruffled with Radium iridescence. Has Bee, No Beading.)
- ___ 396. Millersburg Amethyst Peacock Master Berry Bowl. (10 1/2" Flared with Radium iridescence. Very Attractive.)
- ___ 397. Pair of Millersburg Amethyst Peacock Berry Bowls. (5 3/8" Round Flared. Radium iridescence. Bee, No Beading.)

- ___ 398. Millersburg Dk. Marigold Peacock Berry Bowl. (5 1/2" Round Flared, Radium Iridescence. A Beauty.)
- ___ 399. Millersburg Amethyst Peacock 5 1/2" ICS Bowl. (Satin Iridescence.)
- ___ 400. **FENTON RED BLACKBERRY SPRAY JIP HAT. (CRIMPED EDGE.)**
- ___ 401. Fenton Red Acorn Ruffled Bowl. (7 1/2" Low Ruffled.)
- ___ 402. Fenton Red Vintage Grape Fernery. (Nice Example, Has Silvery Iridescence.)
- ___ 403. Fenton Reverse Amberina Strawberry Bon-Bon. (Four-Sided. Really Pretty.)
- ___ 404. Fenton Red Stippled Rays ICS Bowl. (6" and Nice iridescence. Looks Red.)
- ___ 405. **FENTON BLUE ORANGE TREE PLATE. (9 1/4" WITH NICE, AVERAGE IRIDESCENCE.)**
- ___ 406. Fenton Marigold Orange Tree Plate. (9 5/8" Nice, Average Iridescence.)
- ___ 407. Fenton Amethyst Orange Tree Low ICS Bowl. (9" Scarce Color.)
- ___ 408. Fenton Green Vintage Grape Plate. (7 1/2" Silvery Iridescence.)
- ___ 409. Fenton Blue Vintage Grape Plate. (7 3/4" with Silvery Iridescence.)
- ___ 410. **FENTON MARIGOLD PEACOCK & GRAPE PLATE. (9 3/8" WITH COLLAR BASE. GOOD, AVERAGE IRIDESCENCE.)**
- ___ 411. **FENTON PEACH OPAL PEACOCK & GRAPE BOWL. (RUFFLED WITH SUPER PRETTY IRIDESCENCE.)**
- ___ 412. Fenton Marigold Leaf Chain Plate. (9 1/4" Average Iridescence.)
- ___ 413. Fenton Lt. Marigold G&C Banana Bowl. (Two Sides Up.)
- ___ 414. Fenton Dk. Amber G&C Ruffled Bowl. (7 1/2". Scarce Color.)
- ___ 415. **FENTON DK. MARIGOLD ON MILK GLASS G&C BOWL. (7" ICS, REALLY NICE ITEM.)**
- ___ 416. Three Piece Fenton Marigold Carnival Glass Lot. (Two Row Open JIP Edge Basket, Two Row Open Edge Basket w/ Blackberry Interior, and 9 3/4" Peacock Tail Bowl w/ 3/1 Edge.)
- ___ 417. Two Piece Fenton Carnival Glass Lot. (Aqua JIP Open Edge Hat, and Vaseline JIP Open Edge Hat.)
- ___ 418. Fenton Powder Blue Two Row Open Edge Hat. (Two Sides Up.)
- ___ 419. Fenton Black Amethyst Two Row Open Edge Hat. (Ruffled Shape.)
- ___ 420. **FENTON ICE GREEN TWO ROW OPEN EDGE HAT. (RUFFLED WITH GREAT IRIDESCENCE.)**
- ___ 421. Fenton White Two Row Open Edge Hat. (Ruffled and Very Pretty Iridescence.)
- ___ 422. Two Piece Fenton Carnival Glass Lot. (Green and Amethyst Two Row Open Edge Hats with Blackberry Interior. Both Ruffled.)
- ___ 423. Fenton Vaseline Peacock & Dahlia Bowl. (7 1/4" Ruffled with Light Iridescence.)
- ___ 424. Fenton Blue Two Flowers Ftd. Rose Bowl. (Nice Iridescence.)
- ___ 425. **FENTON MARIGOLD paneled DANDELION WATER TANKARD AND TUMBLERS. (TANKARD AND 7 TUMBLERS. WELL MATCHED SET.)**
- ___ 426. Fenton Marigold Apple Tree Pitcher. (Light Bright Iridescence.)
- ___ 427. Two Piece Fenton Carnival Glass Lot. (Amber 7" Stippled Rays Plate & Amber Dragon & Lotus Ruffled Bowl.)
- ___ 428. Fenton Amethyst Stag & Holly Bowl. (Ftd. & Ruffled with Nice Iridescence. Has Chip on Inside of Top Point.)
- ___ 429. Two Piece Fenton Carnival Glass Lot. (Green Birds and Cherries Bon-Bon and Amethyst Heart & Vine Ruffled Bowl.)
- ___ 430. Fenton Red 2004 WWCGA Pinecone Plate. (St. Louis Artist Signed.)
- ___ 431. Millersburg Marigold Primrose Bowl. (Radium and Ruffled with Nice Highlights.)
- ___ 432. Millersburg Green Grape Wreath Bowl. (Radium and Ruffled with Nice Highlights.)
- ___ 433. Millersburg Amethyst Holly Sprig Bowl. (7 1/4" Radium Iridescence. Super Pretty.)
- ___ 434. Millersburg Marigold Grape Wreath Variant Bowl. (8" Ruffled Radium Iridescence, Nice.)
- ___ 435. Millersburg Amethyst Hanging Cherries Lg. ICS Bowl. (10" with Very Pretty Satiny Iridescence.)
- ___ 436. Millersburg Marigold Hanging Cherries Lg. ICS Bowl. (9 7/8" with Very Nice Satiny Iridescence.)
- ___ 437. Millersburg Green Blackberry Wreath Sauce. (3 /1 Edge with Radium iridescence.)
- ___ 438. Millersburg Marigold Fleur De Lis Bowl. (Domed Ftd. with 3/1 Edge. Has Chip as Shown in Photo on Sawtooth Foot.)
- ___ 439. **MILLERSBURG GREEN TROUT & FLY BOWL. (8 3/4" SATINY IRIDESCENCE WITH 3/1 EDGE. NICE EXAMPLE.)**
- ___ 440. **MILLERSBURG AMETHYST SWIRLED HOBNAIL SPITTOON. (HAS LIGHT IRIDESCENCE.)**
- ___ 441. Millersburg Amethyst Holly Whirl Bowl. (10" Ruffled with Satin iridescence.)
- ___ 442. **MILLERSBURG AMETHYST HANGING CHERRIES BUTTER DISH. (REALLY NICE WITH RADIUM IRIDESCENCE.)**
- ___ 443. Millersburg Amethyst Hanging Cherries Creamer. (Radium with Light Iridescence.)
- ___ 444. Millersburg Marigold Nesting Swan Bowl. (10" Ruffled with Nice Satiny Iridescence.)
- ___ 445. **MILLERSBURG GREEN SUNFLOWER PIN TRAY. (NICE EXAMPLE.)**
- ___ 446. **MILLERSBURG AMETHYST SEACOAST PIN TRAY. (ANOTHER NICE EXAMPLE.)**
- ___ 447. Millersburg Green Blackberry Wreath Bowl. (9" Ruffled with Nice Satin Iridescence.)
- ___ 448. Millersburg Marigold Grape Wreath Bowl. (6 3/4" with Leaf Center. Crimped Edge.)
- ___ 449. Millersburg Amethyst Hobnail Swirl Rosebowl. (Super Nice Iridescence.)

- ___ 450. **MILLERSBURG AMETHYST SWIRLED HOBNAIL SPITTOON. (RADIUM WITH SILVER & GOLD HIGHLIGHTS.)**
- ___ 451. Millersburg Marigold Peacock @ Urn Lg. Bowl. (10 1/2" Ruffled. Nice Example with Satin iridescence.)
- ___ 452. Millersburg Dk. Marigold Feather & Heart Pitcher. (Super Pretty. Has Some Missing Irid. by Spout.)
- ___ 453. Millersburg Green Holly Sprig Card Tray. (Two-Sided with Radium Iridescence.)
- ___ 454. Millersburg Amethyst Whirling Leaves Bowl. (9 3/8" Ruffled. Pretty Iridescence.)
- ___ 455. Millersburg Green Holly Sprig Variant ICS Bowl. (7 1/4" Radium Iridescence.)
- ___ 456. Millersburg Amethyst Fleur De Lis Bowl. (9 3/4" with 3/1 Edge. Radium Iridescence.)
- ___ 457. Millersburg Amethyst Holly Whirl Bowl. (10 1/8" Ruffled. Satin Iridescence.)
- ___ 458. Millersburg Marigold Whirling Leaves Bowl. (9 7/8" Ruffled with Satiny Iridescence.)
- ___ 459. Millersburg Green Cosmos ICS Bowl. (6" with Radium Iridescence.)
- ___ 460. Cambridge Green Inverted Strawberry ICS Bowl. (6 1/2" Signed Near Cut.)
- ___ 461. Lot of Four Carnival Glass Swans. (Two Boyd Miniature Swans and Two Celeste Blue Pastel Swans.)
- ___ 462. Three Marigold Golden Wedding Bottles. (Different Sizes, One with Label.)

**Burns Auction would like to thank you all
for your attendance!**

**Please visit our website www.tomburnsauctions for 2019
up-coming carnival glass auctions.**

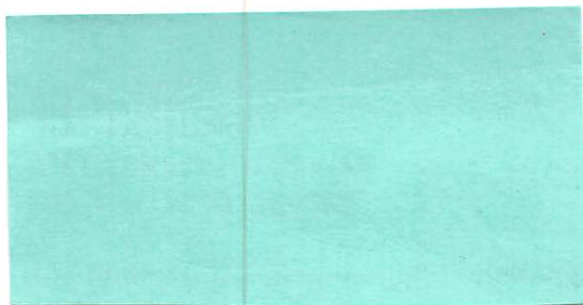
1554 Golden Pond Drive
Minneola Florida 34715
Phone (407) 592•6552 or (503) 756•2629



First Class
US POSTAGE
PAID
MILLERSBURG
OH
PERMIT #13

FOR ALL PHOTOS AND LISTING
TOMBURNSAUCTIONS.COM

LIVE INTERNET BIDDING IS AVAILABLE FOR
THIS AUCTION VIA AUCTION FLEX-HIBID



Lot 260

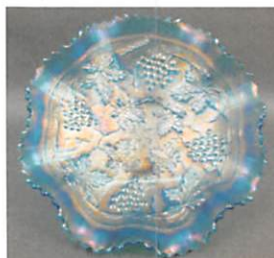
Millersburg Carnival Glass Auction FRIDAY & SATURDAY MARCH 22 & 23



Lot 210



Lot 195



Lot 110



Lot 285



Lot 221



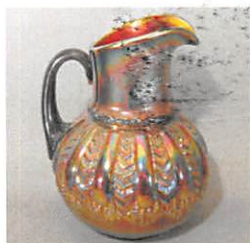
Lot 206



Lot 325



Lot 223



Lot 265



Lot 40



Lot 180



Lot 255