



Lot 35

BURNS

AUCTION SERVICE LLC

Presents 2019

TAMPA BAY CARNIVAL GLASS CLUB CONVENTION AUCTION

Saturday • February 9th 9:30 AM

Preview Friday evening after banquet & Sat.
8:00am - 9:30



Lot 100

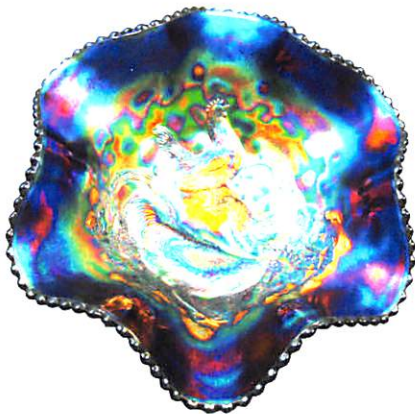
AT THE

DOLPHIN BEACH RESORT

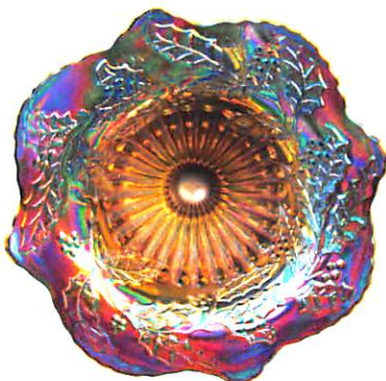
4900 GULF BOULEVARD

ST. PETE BEACH, FLORIDA 33706

RESERVATIONS: 727-360-7011



Lot 160



Lot 150



Lot 315



Lot 155

2019 Tampa Bay Carnival Glass Club

Convention Auction

Saturday February 9th 9:30 am, 2019

Preview Friday Evening (after banquet) & Sat. 8:00 am-9:30

Dolphin Beach Resort • 4900 Gulf Boulevard St. Pete Beach • Florida 33706

Reservations: 727-360-7011

Burns Auction Service is Proud to Present the Super Carnival Glass Collection of Mr. Greg Dilian of Long Island New York. Greg has an eye for Color and Iridescences and Boy does it Show. The Dolphin Beach Resort is a Wonderful Setting, Right on the Beach and a must if you want to get out of the Cold and Snow. So Come and Join us in the Sunshine State for Great Weather, Good Company, and an Incredible Auction. **Public Welcome!**

Absentee Bid Policy

Absentee/ Phone Bids are Gladly Accepted. Either by placing bids through our website or Contacting Our Office at **503.756.2629** or **407.592.6552**. Can't Attend? We also will have online live Bidding Via Auction Flex/ HiBid. If you choose to use this service a 14% buyer's premium will apply to **ONLINE LIVE BIDDING ONLY. (There is NO Buyers Premium for in house, Absentee or Phone Bids)** This Feature allows you to bid right along with the auction as it is being conducted. Please refer to our website for all terms & Conditions of this sale.

Live Phone Bidding

Please be sure to submit your phone bid request early. Due to limited Space, We Cannot Accept Phone Bids with a Pre- Auction Estimate below \$500.00.

All Phone Bids Must Be Submitted by Thursday February 8th, 6:00pm EST.

Terms and Condition of Sale

Cash, Pre-Approved Checks, Visa, MasterCard, Discover & American Express Accepted.

A 4% Buyers Premium will Apply to all credit Card Purchases, With Exception of Cash or Check.

All Statements Made the Day of Sale will Take Precedence Over any and All Printed Material. All Items are Being Sold Without Guarantee or Warranty Applied, Regardless of Statements Made by Auctioneer or Staff. Auction Company is Not Responsible for any Accidents, Thefts, Breakage, or Sold Items. Burns Auction Service Reserves the Right to Withdraw any Property at any Time before and During Actual Sale.

All Sales are Final Once and Item Leaves Auction Location!

Please Visit our Website for Complete Listing and Photos of All Items to be Sold!

www.tomburnsauctions.com

Please Visit www.tbccg.com for all convention info.

Debra Jo Burns

Auctioneer/AU2640

503.756.2629

Thomas J. Burns

Auctioneer/AU3768

407.592.6552

Tampa Bay Carnival Glass Club
 Convention Auction
 February 9, 2019

- | | | | |
|-----|--|-----|--|
| 20 | 1. Jeanette Iris and Herringbone Tumbler w/ Metal Lid - "Creamed Cottage Cheese - 9oz. Net" - Mari. ⁶²³ | 225 | 19. 5 1/4" TALL RIIHIMAKI STARBURST PINCHED-IN VASE - MARI./ AMBER (ANOTHER RARE ITEM W/ GREAT COLOR & IRID.) ^{24 - Steve} |
| 75 | 2. 7 3/4" Tall Signed Robert Hansen Daisy and Button Handled Basket - Amethyst (very scarce w/ excellent irid.) ²¹ | 150 | 20. BROCKWITZ TARTAN LARGE SPITTOON - DK. MARI. (VERY DIFFICULT ITEM TO FIND; GREAT COLOR & CONDITION) ⁶³ |
| 85 | 3. 6 3/4" Tall x 7 5/8" Diam. 1995 Gibson Large Crackle Spittoon - Red (large contemporary item w/ great color) ³⁷ | 225 | 21. ARGENTINIAN FIRESTONE TIRE ASHTRAY - BLUE (DON'T REMEMBER SELLING ONE OF THESE BEFORE; RARE!) ¹⁶ |
| 55 | 4. 10" Diamond "Lustre & Clear" Lg. Turned-in Center Bowl - Red (scarce item; gold/silver irid.) ³⁵ | 150 | 22. Argentinian Goodyear Tire Ashtray - Mari. (very scarce item w/ nice color & irid.) ⁶³⁰ |
| 30 | 5. 8 1/2" Tall Diamond "Lustre & Clear" Bell-Shaped Single Candlestick - Red (tough to find if you need one; nice gold/silver irid.) ⁴¹ | 165 | 23. Brockwitz Rose Garden Jardiniere or Flower Arranger - Blue (has original metal lid; rare color & size) ³⁶ |
| 35 | 6. 12" x 9 3/4" Fostoria Brocaded Acorn Lg. Handled Flat Plate w/ Gold Trim - Ice Blue (nice size w/ excellent gold trim) ³⁷ | 50 | 24. Brockwitz Rose Garden Small Rose Bowl - Blue (another very scarce item to find in this color) ⁵⁶ |
| 175 | 7. N'WOOD WIDE PANEL 4 LILY EPERGNE - GREEN OPAL. (NOT CARNIVAL; VERY SCARCE; HAS A DIFFERENT BASE; MINOR ROUGHNESS AT INSERTS) ³³ | 270 | 25. 7 3/4" TALL BROCKWITZ KULOR CYLINDER VASE - BLUE (RARE ITEM W/ EXCELLENT COLOR & IRID.; A TOUGHIE!) ^{#27} |
| 190 | 8. 9" N LATTICE AND POINSETTIA FTD. 8 RUFFLED BOWL W/ RIBBED EXT. - PURPLE (RARE & ALWAYS DESIRABLE; GREAT COLOR & IRID.) ⁴¹ | 175 | 26. 5 1/2" Australian Crown Crystal Kangaroo 12 Ruffled Sauce - Purple (very scarce pattern w/ excellent irid.) ³⁴ |
| 100 | 9. 8 7/8" N Good Luck Bowl w/ PCE and Ribbed Ext. - Odd Green (scarce; odd base tinge w/ a marigold overlay) ²¹ | 180 | 27. 5 1/2" Australian Crown Crystal Emu 8 Ruffled Sauce - Purple (very scarce pattern w/ excellent irid.) ³⁴ |
| 125 | 10. 12" TALL SIGNED JAPAN LG. FIGURAL BUDDHA - EMERALD GREEN (VERY SCARCE & DESIRABLE W/ BRILLIANT IRID.) ⁶⁰⁸ | 250 | 28. 5 1/2" Australian Crown Crystal Kookaburra 12 Ruffled Sauce - Purple (scarce w/ great color) ⁶⁸⁰ |
| 252 | 11. Czech Enamelled Decorated "Witch Hazel" and "Cotton" Toiletry Bottles - Lt. Mari. (excellent decoration; selling 2x the money) ⁴⁶ | 90 | 29. 5 1/2" Australian Crown Crystal Shrike (Thunderbird) 12 Ruffled Sauce - Dk. Mari. (nice dark color & irid.) |
| 100 | 12. 7" Tall Inwald Jacobean Ranger Atomizer - Dk. Mari. (super color & irid.; has no bulb) ⁴⁶ | 425 | 30. BROCKWITZ MINIATURE HOBNAIL 3 PC. GUEST SET - MARI. (RARE ITEM TO FIND; HAVEN'T SEEN ANOTHER) ^{online} |
| 752 | 13. Czech (Rosice) Heavy Vine Perfume Bottle & Cologne - Lt. Mari. (very scarce; both w/ stoppers; selling 2x the money) ⁴⁶ | 225 | 31. Brockwitz Miniature Hobnail 7 pc. Decanter Set - Mari. (cute and attractive set; cordials are nice) ⁶⁵¹ |
| 65 | 14. 11" Tall Faglaviks (Swedish) ftd. Cylinder Vase - Mari. (rare item; sorta plain but very different) ³⁸ | 145 | 32. Cristalerias Papini (Argentinian) Triple Diamond 2 pc. Guest Set - Dk. Mari. (very unusual item w/ great color & irid.; nice) ⁴⁶ |
| 850 | 15. SIGNED SOWERBY SWANS OBLONG POSEY VASE - DK. MARI. (VERY RARE ITEM; GREAT COLOR & DETAIL; NICE) ⁶⁵¹ | 25 | 33. (Maker?) 11-12" Tall Bulbous based JIP Vase w/ Enamelled Floral Decoration - Mari. (attractive item w/ excellent decoration; nice) ⁶⁰ |
| 175 | 16. RINDSKOPF CLASSIC ARTS POWDER JAR W/ LID - MARI. (EXTREMELY RARE TO HAVE THE LID; VERY UNUSUAL) ⁶⁵¹ | 150 | 34. English (S&W?) 4 Lily Epergne in S/P Frame - Opaque White/ Irid. (of English origin; very desirable & tough to find) ^{Steve Pines/Wins - Long TX} |
| 275 | 17. 6" Tall Rindskopf Classic Arts Paneled Vase - Mari. (very scarce; always desirable; nice staining) ³⁴ | 525 | 35. N RIBBED TORNADO TRI-CORNERED VASE - WHITE (EXTREMELY RARE & VERY DESIRABLE; IT'S BEEN A WHILE SINCE ONE HAS SOLD; PERFECT) ^{#5434} |
| 210 | 18. 5" TALL RIIHIMAKI TENNESSEE STAR PINCHED-IN VASE - MARI./ AMBER (RARE ITEM; GREAT SHAPE W/ EXCELLENT IRID.) ^{24 - Shelly} | 225 | 36. N Tornado Small-Size Tri-Cornered Vase - Green (very scarce w/ great color; has some chips on base & manuf. check in base) ⁶⁵¹ |

Scott + Suzanne on phone

- 225 37. 6" N "BALLARD - MERCED, CAL." 6 RUFFLED ADVERTISING BOWL W/ BASKETWEAVE EXT. - AMETHYST (VERY RARE ADVERTISING ITEM; NICE COLOR & IRID.) 676
- 140 38. N G&C Stippled Covered Powder Jar - Dk. Mari. (quite a rare variation; nice dark color & irid.) 116 ^{color}
- 90 39. N G&C Covered Powder Jar - Dk. Mari. (great color & irid.; very attractive item) 41
- 45 39a. N G&C Banded/Stippled Cologne Bottle and Stopper - Mari. (scarce; stopper not stippled & banded) 60
- 325 40. N PEACOCK AT THE FOUNTAIN LG. FTD. RUFFLED FRUIT BOWL - BLUE (DESIRABLE ITEM W/ REALLY NICE COLOR & IRID.) 21
- 250 41. N Peacock at the Fountain Lg. ftd. Ruffled Fruit Bowl - Amethyst (another desirable item w/ nice irid.) 21
- 170 42. N Peacock at the Fountain Lg. ftd. Ruffled Fruit Bowl - Dk. Mari. (really dark example w/ great color & irid.)
- 150 43. 8 3/4" N Peacocks Bowl w/ PCE and Ribbed Ext. - Pastel Mari. (scarce w/ beautiful irid.; nice item) 57
- 60 44. Pair 9" Tall N'wood Stretch Colonial Candlesticks - Russet Green (nice color) 35
- 225 45. N G&C STIPPLED COVERED HUMIDOR - DK. MARI. (ABSOLUTELY FANTASTIC ITEM; HAS TO BE ONE OF THE BEST!!!) 60
- 165 46. 8 1/2" N G&C VARIANT BOWL W/ PCE AND RIBBED EXT. - ELEC. BLUE (A BEAUTIFUL EXAMPLE W/ EXCELLENT IRID.) 21
- 200 47. 11" N G&C LG. 8 RUFFLED BERRY BOWL W/ BASKETWEAVE EXT. - ELEC. BLUE (BRIGHT BLUE FINISH; TOUGH TO FIND) 41
- 135 48. 6" N G&C 6 Ruffled individual Berry Bowl w/ Basketweave Ext. - Elec. Blue (another attractive example; bright irid.) 26
- 125 49. Pair N G&C Candlesticks - Purple (nice pair w/ nice irid.) 20
- 225 50. 10 1/4" N GRAPE FRIEZE/ VERRE DE ORE LG. FTD. ICE CREAM SHAPED BOWL - PEARLIZED CUSTARD (RARE ITEM; NICE PEARLIZED FINISH; PRETTY NICE GOLD) 39
- 165 51. 8 7/8" N Good Luck 8 Ruffled Bowl w/ Basketweave Ext. - Horehound (rare color; nice irid.; has manuf. defect split on edge) 14
- 205 52. 8 3/4" N Nippon Bowl w/ PCE and Ribbed Ext. - Purple (excellent example; nice irid.) 11
- 225 53. 8 3/4" N Three Fruits Medallion 8 Ruffled Spatula ftd. Bowl w/ Meander Ext. - Aqua Opal. (very scarce; nice color & opal.) 25
- 200 54. N HEARTS AND FLOWERS STEMMED 6 RUFFLED COMPOTE W/ RIBBED EXT. - AQUA OPAL. (VERY SCARCE; NICE OPAL W/ AND ATTRACTIVE MARI. OVERLAY) 43
- 580 55. PAIR 11" N'WOOD STRETCH #651 LG. SQUARE CANDLESTICKS - CELESTE BLUE (VERY RARE & DESIRABLE PAIR; SO TOUGH TO FIND) 34
- 185 56. N'wood #37 "Stippled Scales" Lg. Round Lamp Shade - Mari./ Luna (not sure of pattern name; great color & irid.) 34
- 55 57. N'wood Laurel Band Cylinder Lamp Shade - Irid. Luna (unusual item w/ great irid.)
- 350 58. 9" N Strawberry Stippled Flared Plate w/ Basketweave Ext. - Green (very scarce variation: nice color; tough to find) 44
- 300 58A. 8 3/4" N STRAWBERRY STIPPLED 8 RUFFLED BOWL W/ RIBBED EXT. - LIME ICE GREEN (RARE & VERY DESIRABLE W/ NICE BASE COLOR & IRID.) 686
- 135 59. N Near Cut Stemmed Goblet - Purple (very scarce; a good looking item) 34
- 300 60. 18" TALL N'WOOD DANCING LADIES LG. COVERED URN NIGHT LIGHT W/ SPRAY APPLIED DECORATION - LUNA (RARE NORTHWOOD ITEM; NICE STAIN; TINY FLAKE ON TOP RIM) 52
- 225 61. 10 1/4" TALL N DIAMOND POINT SWUNG VASE - LIME ICE GREEN (GREAT BASE COLOR; VERY ATTRACTIVE ITEM) 21
- 125 62. 9 3/4" TALL N DIAMOND POINT SWUNG VASE - STEEL BLUE (VERY ODD BASE COLOR; NOT MANY KNOWN) 36
- 75 63. 7 3/4" Tall N Diamond Point Squatty Swung Vase - Blue (desirable size w/ dark blue color) 2
- 300 64. 9" N THREE FRUITS STIPPLED PLATE W/ RIBBED EXT. - ELEC. BLUE (EXCELLENT EXAMPLE W/ BRIGHT IRID.) 49
- 975 65. 9" N THREE FRUITS STIPPLED PLATE W/ RIBBED EXT. - AQUA OPAL. (ABSOLUTELY BEAUTIFUL PASTEL EXAMPLE; NICE!) 26...
- 80 65a. N Double Loop Chalice or Open Sugar - Aqua Opal. (very scarce; opal on edge - nice irid.)
- 575 66. 8 5/8" N LATTICE AND POINSETTIA FTD. 8 RUFFLED BOWL W/ RIBBED EXT. - ELEC. BLUE (VERY DESIRABLE W/ A BRIGHT BLUE FINISH) 21
- 300 67. 8 1/2" N LATTICE AND POINSETTIA FTD. 8 RUFFLED BOWL W/ RIBBED EXT. - DK. MARI. (PUMPKIN IRID.; AN EXCELLENT EXAMPLE) 26
- 100 x 2 68. 2 (MAKER?) CHERRIES HATPINS - DARK (RARE PATTERN; SELLING SO MUCH EACH; TOUGH ITEMS) 2x the \$
- 200 69. (Maker?) Flying Bat Hatpin - Dark (typical color & irid.; really nice)
- 650 70. N G&C FTD. HATPIN HOLDER - DK. ICE BLUE (RARE & VERY DESIRABLE; SMALL FLAKE ON ONE FOOT) 627
- 75 71. N G&C Banded ftd. Hatpin Holder - Dk. Mari. (very scarce variation; nice dark color) 23
- 75 71a. N G&C Banded Cologne Bottle and Stopper - Mari. (very scarce item; has correct stopper) 100
- 175 72. N G&C ftd. Hatpin Holder - Purple (really nice example; great irid.) 35
- 100 73. N (Dugan) G&C Large Oval Dresser Tray - Purple (excellent example; really nice item) 661
- 200 74. 8 5/8" N NIPPON BOWL W/ PCE AND RIBBED EXT. - ICE GREEN (VERY SCARCE BASE COLOR; NICE IRID.) 660

- 250 75. N G&C LARGE FTD. FRUIT BOWL W/ STRAIGHT SIDES UP – ICE GREEN (NICE LARGE PASTEL ITEM; GREAT COLOR & IRID.) 21
- 100 76. N G&C LARGE FTD. FRUIT BOWL W/ STRAIGHT SIDES UP – WHITE (NICE AND FROSTY EXAMPLE W/ GREAT IRID.) 686
- 250 77. N G&C ftd. Centerpiece Bowl – Purple (nice item; scarce w/ nice irid.) 38
- 225 78. 8 1/2" N Hearts and Flowers 8 Ruffled Bowl w/ Ribbed Ext. – Ice Green (very scarce w/ nice irid.) 670
- 100 79. 8 1/2" N Hearts and Flowers 8 Ruffled Bowl w/ Ribbed Ext. – Ice Blue (another nice item with nice irid.) 686
- 225 80. 8 3/4" N ROSE SHOW VARIANT 8 RUFFLED BOWL W/ RIBBED EXT. – DK. MARI. (RARE AND DESIRABLE; GREAT COLOR; IRID. A BIT BLOTCHY) 26
- 250 81. 9 1/4" N Poppy Show Flared Plate – Purple 36 (desirable item; nice irid.; some pinheads on base)
- 300 82. 8 5/8" N Poppy Show 8 Ruffled Bowl – Ice Blue (very scarce; desirable w/ nice irid.) 21
- 100 83. 9" N Poppy Show 8 Ruffled Bowl – Mari. (always a desirable item; nice color & irid.)
- 375 84. 8 3/4" N PEACOCKS BOWL W/ PCE AND RIBBED EXT. – GREEN/ EMERALD GREEN (SUPER EXAMPLE; VERY ATTRACTIVE ITEM) 21
- 425 85. 10 5/8" TALL X 4 3/8" TOP DIAM. X 3 3/8" BASE U.S. GLASS FEATHER SWIRL LG. SWUNG VASE – LT. MARI. (EXTREMELY RARE ITEM; CAN'T SAY I'VE SEEN MANY) 60
- 75 86. 9 1/2" U.S. GLASS COSMOS AND CANE LARGE TRI-CORNERED BOWL – MARI. (RARE SHAPE FOR THIS ITEM; GREAT COLOR) 26
- 35 87. 6 5/8" U.S. Glass Palm Beach Tri-Cornered Bowl – Mari./ Gold (very scarce item; nice color & irid.)
- 100 88. Signed Ron Hansen Inverted Strawberry Tumbler Aqua/ Sapphire (very scarce w/ super irid.; nice) 38
- 600 89. SIGNED ROBERT HANSEN OWL TOOTHPICK HOLDER – SPECIAL PRESENTATION – "TO PAUL MILLER FROM ROSE PRESZNIK" – AQUA/SAPPHIRE (I REMEMBER PAUL, FROM OHIO; VERY SPECIAL ITEM) 14-
- 90. PAIR 8 3/4" TALL WESTMORELAND MOUNT VERNON CANDLESTICKS – AMBER FLASHED (THISTLEWOOD'S SHOWED A SIMILAR SHAPE; REGARDLESS – VERY RARE PAIR)
- 225 91. 8 7/8" TALL WESTMORELAND CORINTH JIP VASE – BLUE OPAL. (VERY DESIRABLE ITEM; NICE COLOR & IRID.)
- 225 92. 9 1/2" Tall Westmoreland Corinth JIP Vase – Mari./ Moonstone (another scarce item; nice base color)
- 50 93. 8 3/4" Westmoreland Daisy Wreath Round Flared Bowl – Blue Opal. (scarce & desirable)
- 85 93a. 8 1/2" Westmoreland Daisy Wreath Flared Plate – Dk. Mari./ Milk Glass (very scarce; nice dark overlay)
- 70 94. 3 5/8" X 3 7/8" WESTMORELAND INTAGLIO FLOWER 4-SIDED WIRE HANDLED SAUCE – P. OPAL. (VERY SCARCE ITEM; QUITE IN DEMAND; NICE)
Pair 8" Tall Duncan Miller Colonial Spiral or "Lillian" Candlesticks – Amethyst Flash (very scarce and unusual pair)
McKee #151 Single Candlestick – Amethyst Flash (scarce item)
- 115 95. U.S. GLASS PALM BEACH HANDLED WATER PITCHER – HONEY AMBER (VERY DESIRABLE ITEM; UNDERPRICED AND SCARCE)
- 45 96. U.S. Glass Palm Beach Tumbler – Honey Amber (nice color & irid.)
- 97. 7" M'burg Grape Wreath 6 Ruffled Bowl – Green (radium & nice)
- 65 98. 9" M'BURG 6 POINTED MANY STARS ROUND FLARED CRIMPED EDGE BOWL – LT. MARI./ VASELINE (ABSOLUTELY FANTASTIC ITEM; GREAT SHAPE – GREAT COLOR; ONLY ONE KNOWN IN THIS SHAPE) 1143AM
- 30 99. 9 3/4" M'BURG 6 POINTED MANY STARS BOWL IN 3 IN 1 EDGE – MARI. (GREAT COLOR & IRID.; VERY ATTRACTIVE)
- 8500 100. 6 1/4" M'burg "Milky Way" Deep Round Bowl – Clear Opal. (scarce item; nice opal.)
- 275 101. 5 1/2" M'burg Grape Wreath Variant Round Crimped Edge Sauce – Mari. (radium & nice)
- 105 102. 6 1/4" M'burg Grape Wreath Variant Sauce w/ 3 in 1 Edge – Mari. (radium; nice irid.)
- 40 103. 9" M'BURG PEACOCK LARGE TURNED-IN ICE CREAM BOWL – AMETHYST (ANOTHER EXTRAORDINARY ITEM; ABSOLUTELY FANTASTIC COLOR & IRID.; SUPER!)
- 25 104. 6" M'BURG PEACOCK AT THE URN IND. ICE CREAM BOWL – NO BEE – NO BEADING – BLUE (PROBABLY THE DARKEST BASE COLOR I'VE SEEN; HAS REALLY NICE SATINY IRID.) 34
- 1850 105. 10 1/4" M'BURG PEACOCK AT THE URN LG. ICE CREAM BOWL – GREEN (HAS BEE BUT NO BEADING; AN ATTRACTIVE SATINY ITEM)
- 750 106. 10 1/4" M'burg Peacock at the Urn Lg. 6 Ruffled Bowl – Green (another really nice satiny item; has bee but no beading)
- 275 107. 8 3/4" M'burg Peacock at the Urn "Mystery" 6 Ruffled Bowl – Green (very scarce; nice satiny finish)
- 135 108. 7 1/2" M'BURG PEACOCK AT THE URN "SHOTGUN" BOWL W/ 3 IN 1 EDGE – GREEN (VERY SCARCE & VERY DESIRABLE; RADIUM)
- 150 109. 8 3/4" M'burg Peacock at the Urn "Mystery" Bowl w/ 3 in 1 Edge – Mari. (really nice satiny example; nice finish)
- 225 110. 8 7/8" M'BURG PRIMROSE ICE CREAM SHAPED BOWL – GREEN (VERY DESIRABLE SHAPE W/ EXCELLENT RADIUM IRID.)
- 50 111. 9 3/4" M'burg Primrose 6 Ruffled Bowl – Mari. (nice radium item)
- 200 112.
- 35 113.

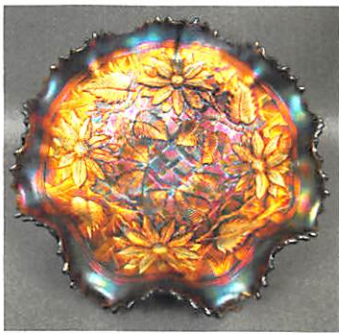
1226 PM

- 250 114. 9 3/4" M'burg Hanging Cherries Lg. Ice Cream Bowl - Amethyst (nice item; has a radium finish)
- 160 115. 5 1/2" M'BURG HANGING CHERRIES ICE CREAM SHAPED SAUCE W/ HOBNAIL EXT. - BLUE (VERY RARE VARIATION; SATINY FINISH; NICE!!)
- 275 116. 8 5/8" M'BURG ZIG ZAG TRI-CORNERED CRIMPED EDGE BOWL - MARI. (DESIRABLE SHAPE OF A GREAT PATTERN - SUPER EXAMPLE)
- 195 117. 9" M'burg Rays and Ribbons Ice Cream Shaped Bowl - Amethyst (scarce shape w/ a nice radium finish)
- 75 118. 9 1/8" M'burg Rays and Ribbons Ice Cream Shaped Bowl - Mari. (another scarce shape that's really nice)
- 135 119. 9 1/4" M'burg Fleur de Lis domed Ice Cream Shaped Bowl - Amethyst (nice shape; laid back radium item; has a small flake on point of foot)
- 200 120. M'BURG POPPY STEMMED 6 RUFFLED COMPOTE - AMETHYST (EXTREMELY RARE SHAPE W/ EXCELLENT COLOR & IRID. - REALLY NICE)
- 60 120a. 6 1/2" M'burg Strawberry Wreath ftd. 6 Ruffled Compote - Dk. Mari. (very nice radium finish; very scarce)
- 300 121. 7 1/4" TALL X 5" TOP DIAM. M'BURG BULLSEYE AND LOOP SWUNG FLARED VASE - AMETHYST (VERY SCARCE PATTERN; NICE RADIUM FINISH)
- 325 122. 7 1/2" Tall x 5 1/4" Top Diam. M'burg Tulip Scroll Swung Vase - Amethyst (nice squatty size w/ a nice radium irid.)
- 150 123. 9 3/4" Tall x 4" Top Diam. M'burg Tulip Scroll Swung Vase - Amethyst (radium & very attractive; pinheads in pattern)
- 350 124. M'BURG TRACERY LG. OVAL 2-HANDLED BON BON - AMETHYST (VERY SCARCE COLOR; HAS A SATINY FINISH)
- 600 125. 10 1/2" M'BURG BLACKBERRY WREATH LG. 6 RUFFLED BOWL - BLUE (RARE & DESIRABLE BASE COLOR; NICE SATINY FINISH)
- 400 126. 6 5/8" M'BURG LETTERED COURTHOUSE ICE CREAM SHAPED BOWL - AMETHYST (RARE & ALWAYS DESIRABLE; GREAT SHAPE AND DETAIL)
- 375 127. 7 1/2" M'BURG LETTERED COURTHOUSE 6 RUFFLED BOWL - AMETHYST (RARE & DESIRABLE; NICE COLOR & IRID.)
- 175 128. 9 1/2" M'BURG WHIRLING LEAVES TRI-CORNERED CRIMPED EDGE BOWL - GREEN (VERY DESIRABLE ITEM W/ A BRIGHT GOLD FINISH)
- 50 129. 9 3/4" M'burg Whirling Leaves 6 Ruffled Bowl - Green (radium & nice)
- 600 130. 6 3/4" M'BURG TROUT AND FLY 4-SIDED SQUARE BOWL - AMETHYST (RARE & DESIRABLE; GREAT SHAPE & SATINY FINISH)

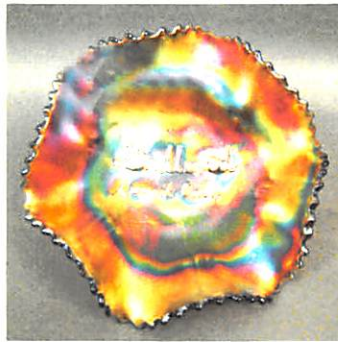
- 225 131. 8 1/2" M'burg Trout and Fly Ice Cream Shaped Bowl - Green (desirable w/ nice satiny finish)
- 250 132. 9" M'BURG BIG FISH BOWL W/ 3 IN 1 EDGE - MARI. (ANOTHER NICE SATINY FINISH; NICE DETAIL)
- 325 133. M'BURG (?) PEACOCK TAIL VARIANT LG. 6 RUFFLED COMPOTE - EMERALD GREEN (SUPER EXAMPLE W/ EXCELLENT IRID.; NICE!)
- 30 134. Cambridge Large Buzz Saw Cruet and Stopper - Crystal (scarce)
- 275 135. CAMBRIDGE INVERTED THISTLE 3 FTD. NUT BOWL - GREEN (EXTREMELY RARE ITEM TO FIND; GREAT COLOR & IRID.; SUPER ITEM)
- 300 136. CAMBRIDGE INVERTED THISTLE 2-SIDED 3 FTD. NUT BOWL - GREEN (SAME AS PRIOR LOT, BUT A WHIMSIED 2-SIDED ITEM; GREAT COLOR & IRID.; NICE)
- 65 137. Cambridge Inverted Strawberry Covered Powder Jar - Green (scarce & desirable; small chips on lid)
- 125 138. Cambridge Small-size Buzz Saw Cruet and Stopper - Green (very scarce & very desirable; nice color)
- 95 139. Cambridge Inverted Feather Covered Cracker Jar - Green (always a desirable item; nice irid.)
- 1250 140. CAMBRIDGE INVERTED FEATHER COVERED BUTTER DISH - DK. MARI. (EXTREMELY RARE ITEM TO FIND IN THIS COLOR - NOT MANY KNOWN)
- 141 141. CAMBRIDGE INVERTED FEATHER HANDLED CREAMER - DK. MARI. (RARE ITEM; GREAT COLOR)
- 175 142. CAMBRIDGE INVERTED FEATHER SPOONER - DK. MARI. (ANOTHER RARE ITEM W/ GREAT COLOR)
- 150 143. 6" TALL DUGAN VENETIAN LINE W/ FRIT BULBOUS 4-SIDED PINCHED-IN VASE - RED (RARE AND DESIRABLE ITEM; GREAT COLOR & FINISH)
- 144 144. 4 1/2" Tall Dugan Venetian Line w/ Frit Bulbous Pinched-in Vase w/ IVT Interior - Blue (very scarce item; nice color)
- 550 145. PAIR 8 1/2" TALL DIAMOND STRETCH "MAE WEST" FLARED CANDLESTICKS - COBALT BLUE W/ CRACKLE EFFECT (EXTREMELY RARE COLOR FOR THESE ITEMS; SUPER IRID.)
- 325 146. PAIR 8 1/2" TALL DIAMOND STRETCH "MAE WEST" FLARED CANDLESTICKS - BLACK EGYPTIAN LUSTRE (ANOTHER RARE PAIR W/ EXCELLENT COLOR & IRID.)
- 375 147. Pair 9 1/4" Tall U.S. Glass Spiral Stemmed Candlesticks w/ Bobeche - Celeste Blue w/ Black Trim (very scarce pair to find)
- 155 148. DUGAN MARY ANN 3-HANDLED LOVING CUP - DK. MARI. (VERY SCARCE & DESIRABLE ITEM; NICE)
- 50 149. 8 3/8" Dugan Brooklyn Bridge 10 Ruffled Bowl - Mari. (typical nice color & irid.; nice detail)

SQUARE - 400-725
 DIAMOND - 750-1350 (1500 D&A GREEN 4/28/12)

- 2100 150. DUGAN CHRISTMAS COMPOTE - PURPLE (VERY RARE & EXTREMELY DESIRABLE ITEM; SO TOUGH TO FIND; REALLY NICE) *21*
- 15 151. Dugan Amaryllis ftd. Tri-Cornered Compote - Purple (scarce pattern & shape w/ a satiny finish)
- 130 152. 5" DUGAN AMARYLLIS FTD. FLARED PLATE - PASTEL MARI. (RARE & VERY DESIRABLE W/ A BRIGHT FINISH) *31*
- 300 153. 7 1/4" TALL DUGAN ARGONAUT SHELL SWUNG VASE - PURPLE (RARE ITEM W/ EXCELLENT COLOR & IRID.; NICE ITEM) *27*
- 375 154. 7 1/2" TALL DUGAN ARGONAUT SHELL SWUNG VASE - DK. MARI. (SUPER EXAMPLE W/ EXCELLENT COLOR & IRID.) *27*
- 2300 ~~2350~~ 155. DUGAN CHRISTMAS COMPOTE - DK. MARI. (ANOTHER VERY RARE AND VERY DESIRABLE; GREAT EXAMPLE) *694*
- 90 156. 6 5/8" Dugan Five Hearts domed Flared Compote - Mari. (very scarce pattern in a great shape) *603*
- 775 157. DUGAN G&C PERFUME BOTTLE AND STOPPER - PURPLE (EXCELLENT EXAMPLE W/ GREAT COLOR & IRID.) *14*
- 85 158. 10 5/8" Dugan Victorian Lg. 6 Ruffled Bowl - Purple (very scarce; nice satiny finish) *33*
- 175 159. 8 1/8" DUGAN SKI STAR DOMED DEEP FLARED 10 RUFFLED BOWL - PURPLE (VERY DESIRABLE SHAPE W/ EXCELLENT IRID.; NICE)
- 1900 160. 10 1/2" DUGAN FARMYARD 6 RUFFLED BOWL W/ JH EXT. - PURPLE (ONE OF THE VERY BEST 6 RUFFLED EXAMPLES I'VE SEEN) *686*
- 750 161. 10 1/2" DUGAN GARDEN PATH VARIANT LG. 6 RUFFLED BOWL W/ SODA GOLD EXT. - PURPLE (ABSOLUTELY FANTASTIC DUGAN ITEM; ONE OF THE VERY BEST) *64*
- 125 162. 10 5/8" DUGAN HEAVY GRAPE LG. 8 RUFFLED BOWL W/ COMPASS EXT. - PURPLE (RARE AND VERY DESIRABLE ITEM; NICE IRID.) *21*
- 85 163. 5 3/4" DUGAN HEAVY GRAPE IND. 8 RUFFLED SAUCE W/ COMPASS EXT. - PURPLE (TOUGH SMALL SAUCE TO FIND; GREAT COLOR & IRID.)
- 130 164. 5" TALL DUGAN BIG BASKETWEAVE ROUND SQUATTY FLARED VASE - WHITE (VERY SCARCE SHAPE W/ GREAT IRID.; NICE)
- 400 164A. FENTON ORANGE TREE ORCHARD BULBOUS HANDLED WATER PITCHER - FLORESCENT WHITE (A WHITE EXAMPLE THAT GLOWS UNDER THE BLACK LIGHT. NEVER HEARD OF ANOTHER. QUITE RARE AND VERY UNUSUAL) *46*
- 375 165. DUGAN COIN SPOT STRETCH STEMMED 8 RUFFLED COMPOTE - CELESTE BLUE (VERY RARE AND VERY DESIRABLE STRETCH ITEM; GREAT COLOR) *67*
- 175 166. 7 5/8" DUGAN CIRCLE SCROLL SWUNG VASE - PURPLE (ANOTHER SUPER ITEM W/ GREAT COLOR & IRID.) *38 - I have a color photo of this one - not for sale*
- 225 167. 8 3/4" DUGAN FANCIFUL LOW 10 RUFFLED PLATE - AMETHYST (NICE COLOR & IRID. W/ BRIGHT HIGHLIGHTS) *693*
- 225 168. 9" Dugan Fanciful Bowl w/ 3 in 1 Edge - Amethyst (scarce shape; nice) *21*
- 225 169. 8 1/2" Dugan Fanciful Flat Plate - Blue (rare base color; tough to find)
- 400 170. 9" DUGAN FLOWERS AND FRAMES DOMED TRI-CORNERED CRIMPED EDGE BOWL - PURPLE (FANTASTIC COLOR & IRID.; AND UNBELIEVABLE ITEM) *48*
- 225 171. 8 3/4" DUGAN DOGWOOD SPRAYS DOMED TRI-CORNERED CRIMPED EDGE BOWL - AMETHYST (A VERY TOUGH ITEM TO FIND IN THIS SHAPE; NICE IRID.) *49*
- 75 172. 9 1/4" Dugan Cherries 6 Ruffled Bowl w/ JH Ext. Amethyst (scarce item w/ really nice irid.) *45*
- 475 173. 5" TALL X 6" TOP DIAM. DUGAN LINED LATTICE SQUATTY FLARED VASE - PURPLE (SUPER SHAPE & SIZE W/ EXCELLENT IRID.) *14*
- 60 174. 8" Tall Dugan Lined Lattice Swung Vase - Purple (nice color & irid.) *30*
- 475 175. 9" DUGAN ROUND UP LOW 10 RUFFLED BOWL/ PLATE - AMETHYST (ANOTHER FANTASTIC DUGAN ITEM; GREAT IRID.) *40*
- 200 176. 8 5/8" Dugan Apple Blossom Twigs low 10 Ruffled Bowl - Purple (really nice color w/ great irid.; nice)
- 110 176a. 8 3/4" Dugan Apple Blossom Twig 10 Ruffled Bowl w/ Basketweave Ext. - Purple (very nice color & irid.; scarce w/ the exterior) *45*
- 400 177. 6 3/4" DUGAN PERSIAN GARDEN FLAT PLATE W/ BASKETWEAVE EXT. - AMETHYST (EXCELLENT EXAMPLE W/ SUPER IRID.) *26*
- 350 178. 6 1/2" DUGAN PETAL AND FAN FLAT PLATE W/ CRIMPED EDGE AND JH EXT. - PURPLE (ONE OF THE BETTER EXAMPLES; SUPER)
- 30 179. 7" Dugan Grapevine Lattice Flat Plate w/ Plain Ext. - Lt. P. Opal. (rare & unusual item w/ opal. on the edge) *467*
- 120 180. 6 1/2" DUGAN GARDEN PATH VARIANT FLAT PLATE W/ SODA GOLD EXT. - DK. P. OPAL. (FANTASTIC EXAMPLE W/ SUPER OPAL.) *31*
- 275 181. 4 1/4" SQUARE FENTON KITTENS 4-SIDED BOWL - BLUE (VERY SCARCE ITEM W/ EXCELLENT SATINY FINISH) *36*
- 70 182. 3 1/2" Fenton Kittens Round Cereal Bowl - Dk. Mari. (nice color & irid.)
- 165 183. 8 3/4" Fenton Ragged Robin Bowl w/ 3 in 1 Edge - Green (really nice example; great detail) *25*
- 75 184. 8 1/2" Fenton Dragon and Lotus IC Shaped Bowl - Dk. Green (super example)
- 125 185. 8 1/2" FENTON DRAGON AND LOTUS 8 RUFFLED BOWL - P. OPAL. (NICE OPAL ON EDGE W/ EXCELLENT IRID.)
- 125 186. 9" FENTON PEACOCK AND GRAPE 8 RUFFLED BOWL - MARI./ MOONSTONE (RARE ITEM; VERY ATTRACTIVE FINISH)



Lot 8



Lot 37



Lot 241



Lot 120



Lot 18



Lot 335



Lot 197



Lot 126



Lot 135



Lot 106



Lot 260



Lot 54



Lot 145



Lot 190



Lot 296



Lot 75



Lot 40



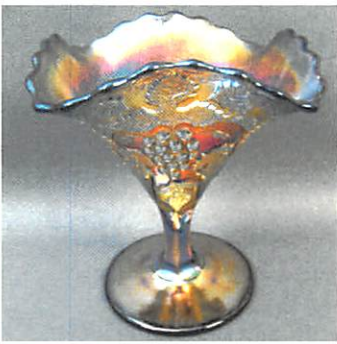
Lot 64



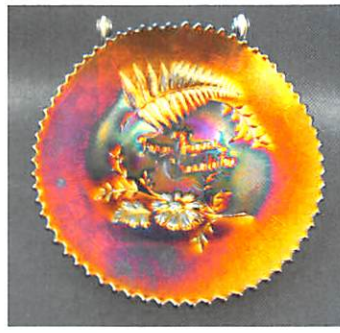
Lot 355



Lot 55



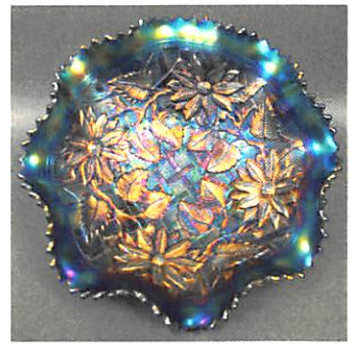
Lot 295



Lot 242



Lot 240



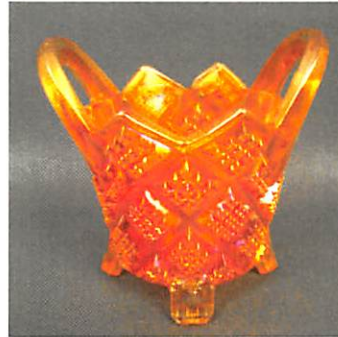
Lot 66



Lot 127



Lot 198



Lot 336



Lot 19



Lot 322



Lot 261



Lot 115



Lot 136



Lot 76



Lot 112



Lot 191



Lot 146



Lot 358



Lot 356



Lot 225



Lot 45

- 135 187. 8 5/8" FENTON PEACOCK AND GRAPE 8 RUFFLED BOWL - P. OPAL. (OPAL ON EDGE W/ NICE IRID.) ~~60~~ 206.
- 90 188. 8 1/2" Fenton Stretch 3 Row Open Edge Basketweave IC Shaped Bowl - White (nice large example w/ nice frosty finish) 55 207.
- 200 189. 9 3/8" FENTON ORANGE TREE FLAT PLATE - DK. MARI. (EXCELLENT EXAMPLE W/ NICE DARK COLOR) ~~250~~ 208.
- 325 190. FENTON CHERRY CIRCLES 4-SIDED 2-HANDLED LG. BON BON - RED (RARE PATTERN IN THIS COLOR; SATINY W/ SUPER RED) 60 209.
- 200 191. FENTON LOTUS AND GRAPE 2-SIDED 2-HANDLED CARD TRAY - RED (RARE ITEM W/ TYPICAL NICE COLOR AND IRID.) ~~100~~ 375 210.
- 225 192. 6" FENTON LOTUS AND POINSETTIA FTD. 6 RUFFLED SAUCE - RED (LOOKS RED FROM AFAR; NICE COLOR) 672 150 211.
- 150 193. 7 1/2" Fenton G&C 8 Ruffled Bowl - Red (very scarce w/ a dark satiny finish) 160 212.
- 250 194. 7 1/8" Fenton G&C Ice Cream Shaped Bowl - Dk. Mari./ Moonstone (another excellent example; nice look) 34 210 213.
- 200 195. 6 5/8" FENTON PEACOCK TAIL IC SHAPED BOWL - RED (RARE & DESIRABLE; TOUGH PATTERN IN THIS COLOR) 95 214.
- 200 196. 6" Fenton Stippled Rays IC Shaped Bowl - Red (great red example) ~~225~~ 215.
- 700 197. 6" FENTON GARDEN MUMS W/ "GEVURTZ BROS. FURNITURE & CLOTHING, UNION AVE AND EAST BURNSIDE ST." ADVERTISING PLATE - AMETHYST (RARE & DESIRABLE PATTERN; TOUGH TO FIND) 201 ~~80~~ 216.
- 566 198. 6" FENTON GARDEN MUMS W/ "GEO. W. GETTS PIANOS GRAND FORKS, N. DAK." ADVERTISING - AMETHYST (ANOTHER RARE ADVERTISING ITEM THAT'S TOUGH TO FIND.) 13 60 217.
- 225 199. 6" Fenton "Season's Greetings - Eat Paradise Sodas" Advertising Plate - Amethyst (really nice example - one the better ones) 658 25 218.
- 475 200. 11" FENTON DRAGONS TONGUE LG. 8 RUFFLED BALL FTD. BOWL - MARI. (VERY RARE AND VERY DESIRABLE PATTERN; NICE) 30 175 219.
- 275 201. 10 5/8" FENTON STAG AND HOLLY LG. BALL FTD. ICE CREAM SHAPED BOWL - GREEN (EXCELLENT COLOR AND IRID.; A GREAT EXAMPLE) 400 220.
- 860 202. FENTON ORANGE TREE FTD. HATPIN HOLDER - GREEN (RARE & DESIRABLE COLOR FOR THIS PATTERN) 300 221.
- 325 203. Fenton Orange Tree ftd. Hatpin Holder - Blue/Elec. Blue (great color w/ excellent irid.; nice) 645 75 222.
- 175 204. 7 3/4" FENTON PEACOCK AND DAHLIA FLAT PLATE - MARI. (VERY SCARCE PATTERN; TOUGH SHAPE TO FIND) 17 150 223.
- 60 205. 7" Fenton Peacock and Dahlia 6 Ruffled Bowl - Aqua/ Mari. (scarce color; nice) 130 224.
- 7 1/2" Fenton Peacock and Dahlia 6 Ruffled Bowl - Amethyst/ w/ Swirl Slag Effect (very unusual tint w/ swirl effect) ~~60~~ 225.
- 6 1/2" Fenton Peacock and Dahlia IC Shaped Bowl - Blue (nice color and irid.) 575
- 9 1/2" FENTON "COMPLIMENTS OF SPECTOR'S DEPARTMENT STORE" HEART AND VINE FLAT PLATE - DK. MARI. (RARE AND DESIRABLE W/ EXCELLENT COLOR AND IRID.) 14 380 226.
- Fenton Persian Medallion 2-Handled 4-Sided Bon Bon - Mari./ Vaseline (nice base color; scarce)
- 9 1/8" FENTON PERSIAN MEDALLION FLAT PLATE - GREEN (RARE BASE COLOR; HAS A SATINY FINISH)
- 9 1/4" FENTON PERSIAN MEDALLION FLAT PLATE - MARI. (RARE COLOR FOR THIS SIZE; NICE COLOR & IRID.)
- 9 3/8" Fenton Persian Medallion Flat Plate - Blue (scarce w/ silvery highlights; perfect!)
- 6 1/4" FENTON PERSIAN MEDALLION FLAT PLATE - BLACK AMETHYST (RARE COLOR IN THIS SIZE; NICE IRID.) 62
- 9 3/8" FENTON CAPTIVE ROSE FLAT PLATE - DK. MARI. (VERY SCARCE W/ NICE DARK SATINY IRID.) 45
- 9 1/4" Fenton Captive Rose Flat Plate - Blue (another scarce item w/ nice irid.) 14
- (2) N G&C Shot Glasses - Dk. Mari. (scarce items; selling so much each for pair)
- 9" N G&C Flared Plate w/ Plain Ext. - Amethyst (super example; very attractive) 2
- 10 1/2" N G&C LG. ICE CREAM BOWL W/ BASKETWEAVE EXT. - AMETHYST (LIGHT BASE COLOR W/ SUPER IRID.; NICE ITEM) 673
- 8 7/8" N G&C Variant Stippled Flared Plate w/ Ribbed Ext. and "Old Rose Distillery-Wines & Liquors -Chicago" Advertising - Green (scarce & desirable item w/ a bronze overlay) 49
- 8 3/4" N G&C VARIANT STIPPLED FLARED PLATE W/ RIBBED EXT. - SAPPHIRE (RARE & DESIRABLE; NICE BASE COLOR) 26
- 9" N HEARTS AND FLOWERS FLAT PLATE W/ RIBBED EXT. - DK. MARI. (ALWAYS A DESIRABLE ITEM; GREAT COLOR & IRID.)
- 8 3/4" N Strawberry Flared Plate w/ Plain Ext. - Purple (great color & irid.) 46
- 8 7/8" N Good Luck Stippled Bowl w/ PCE and Ribbed Ext. - Blue w/ Blue Streaks (odd tint w/ a slag effect; nice irid.) 21
- 8 7/8" TALL N DRAPERY SWUNG VASE - BLUE (PERFECT W/ EXCELLENT COLOR & BRIGHT IRID.) 45
- 9" N PEACOCKS FLARED PLATE W/ RIBBED EXT. - ELEC. BLUE (SUPER COLOR & IRID.; AN ABSOLUTE BEAUTY!) 26
- 9 1/8" N PEACOCKS FLAT PLATE W/ RIBBED EXT. - PURPLE (ANOTHER SUPER EXAMPLE W/ EXCELLENT COLOR & IRID.; NICE)

- 225 227. 8 7/8" N PEACOCKS FLARED PLATE W/ RIBBED EXT. – ICE BLUE (VERY DESIRABLE W/ BRIGHT IRID.) 20
- 225 228. 9" N Peacocks Flared Plate w/ Ribbed Ext. – Ice Green (scarce; nice color & irid.) 49
- 125 229. 8 3/4" N Peacocks Flared Plate w/ Plain Ext. – Ice Green (scarce variation; excellent irid.) 632
- 90 230. 9 1/8" N Peacocks Flared Plate w/ Plain Ext. – White (scarce w/ bright irid.) 697
- 125 231. 8 3/4" N Peacocks 8 Ruffled Bowl w/ Ribbed Ext. – Blue (scarce & desirable; nice blue highlights) 21
- 150 231a. 8 3/4" N Peacocks 8 Ruffled Bowl w/ Ribbed Ext. – Amethyst (very scarce w/ really nice irid.)
- 625 232. 10" N PEACOCK AT THE URN LG. ICE CREAM BOWL – ELEC. BLUE (VERY ATTRACTIVE ITEM W/ BRIGHT BLUE IRID.) 425-825 458
- 50x3 233. (2) 5 1/2" and (1) 5 1/4" N Peacock at the Urn individual Ice Cream Bowls – Blue/ Elec. Blue (2 nice examples; selling so much each for set)
234. 5 1/2" N Peacock at the Urn individual Ice Cream Bowl – Blue (nice color & irid.)
235. 9 5/8" N PEACOCK AT THE URN LG. ICE CREAM BOWL – AMETHYST (ANOTHER ATTRACTIVE ITEM W/ A BRIGHT FINISH)
236. 9 5/8" N PEACOCK AT THE URN LG. ICE CREAM BOWL – ICE GREEN (VERY SCARCE; ALWAYS DESIRABLE; NICE)
237. 10 1/4" N Peacock at the Urn Lg. Ice Cream Bowl – White (scarce; nice and frosty; nice irid.)
238. 9 1/2" N PEACOCK AT THE URN ALL OVER STIPPLED LG. ICE CREAM BOWL – DK. MARI. (VERY SCARCE VARIATION; NICE ITEM)
239. 5 1/2" N Peacock at the Urn All Over Stippled individual Ice Cream Bowl – Mari. (very scarce w/ excellent irid.)
240. 6 1/8" N "JOCKEY CLUB" 6 RUFFLED ADVERTISING BOWL W/ BASKETWEAVE EXT. – AMETHYST (RARE & DESIRABLE ITEM; SO VERY TOUGH TO FIND)
241. 6 1/4" N "FERN BRANDS CHOCOLATES" FLAT ADVERTISING PLATE W/ BASKETWEAVE EXT. – AMETHYST (A BEAUTIFUL EXAMPLE WITH EXCELLENT IRID.)
242. 6 3/8" N "FERN BRANDS CHOCOLATES" HAND GRIP ADVERTISING PLATE W/ BASKETWEAVE EXT. – AMETHYST (NICE & VERY ATTRACTIVE; REALLY NICE ITEM)
243. 14" N'wood Poppy Hanging Dome Light Shade – Luna (scarce; large item; small chip on pattern; not iridized)
244. 3 1/4" Heisey Princess 3 ftd. Individual Salt Dip – Lt. Mari. (very desirable mini item; nice irid.)
245. Pair 8 5/8" Tall Heisey 6 Paneled Candlesticks – Lt. Mari. (scarce & desirable pair; nice irid.)
246. 11" Tall Signed Heisey Lg. Paneled Candlestick – Lt. Mari. (nice large item; very impressive)
- 246a. 8" Fostoria Brocaded Acorns Round Plate – Ice Blue (very scarce size; great irid.)
247. 4" TALL X 3 1/2" TOP DIAM. IMPERIAL MINIATURE MORNING GLORY SQUATTY VASE – PURPLE (CUTE SIZE W/ GREAT IRID.)
248. 5 1/8" TALL X 3 1/2" TOP DIAM. IMPERIAL MORNING GLORY AND DRAPE MINIATURE SWUNG VASE – PURPLE (SUPER EXAMPLE W/ GREAT IRID.)
249. 4 7/8" Tall x 4 3/8" Top Diam. x 2 1/4" Base Imperial Ripple Miniature Swung Flared Vase – Mari. (nice shape; neat item)
250. IMPERIAL LOGANBERRY FLARED VASE – PURPLE (SUPER EXAMPLE W/ EXCELLENT IRID.; NICE)
251. 8 1/4" TALL X 6 1/2" TOP DIAM. IMPERIAL BEADED BULLSEYE VASE W/ FLARED TOP – PURPLE (GREAT SHAPE; NICE TOP FLARE; NICE IRID.)
252. 12 1/2" Tall x 4 3/4" Top Diam. Imperial Beaded Bullseye Swung Vase – Lt. Amethyst/ Lavender (light base color w/ great irid.)
253. 12 3/4" Tall x 3 3/8" Base Imperial Ripple Mid-Size Swung Vase – Purple (super irid.; nice item)
254. 9 1/4" Tall x 2 13/16" Base Imperial Ripple Standard Swung Vase – Violet Blue (scarce base color w/ typical irid.)
255. 12 1/4" TALL X 2 7/8" BASE IMPERIAL RIPPLE STANDARD SWUNG VASE – AQUA (RARE BASE COLOR; TOUGH TO FIND)
256. 11 3/4" Tall x 3 3/8" Base Imperial Ripple Mid-Size Swung Vase – Smoke (scarce w/ great irid.)
257. 9 1/8" Imperial Open Rose Lg. Round Master Berry Bowl – Purple (scarce; nice irid.)
- 257a. Imperial Lustre Rose Round ftd. Fernery – Purple (rare color for this pattern)
258. 9" IMPERIAL COBBLESTONE 8 RUFFLED BOWL – PURPLE (SUPER EXAMPLE W/ BRIGHT IRID.)
259. 8" Imperial Scroll Embossed Deep 8 Ruffled Bowl – Purple (really nice irid.)
260. 10 3/8" IMPERIAL SIGNED NUART HOMESTEAD CHOP PLATE – AMBER (RARE & DESIRABLE BEING SIGNED; GREAT IRID.)
261. 10 1/4" IMPERIAL SIGNED NUART HOMESTEAD CHOP PLATE – PURPLE (ANOTHER DIFFICULT ITEM; SIGNED AND NICE)
262. 9" Imperial Double Dutch/ Floral and Optic 3 ftd. 8 Ruffled Bowl – Purple (very desirable item w/ bright irid.)
263. 9 1/4" IMPERIAL SCROLL EMBOSSED FLAT PLATE – PURPLE (FLAT AND NICE; A VERY ATTRACTIVE ITEM)
264. 4 1/2" TALL X 6 3/4" DIAM. IMPERIAL 474 SQUATTY STEMMED 8 RUFFLED COMPOTE – PURPLE (RARE SHAPE & SIZE W/ BRIGHT INTERIOR IRID.)

- ___265. **IMPERIAL TIGER LILY 7 PC. WATER SET – PURPLE (VERY RARE SET W/ A FANTASTIC PITCHER; HAS MANUF. CHECK AT BOTTOM OF HANDLE)**
- ___266. Imperial Tiger Lily Handled Water Pitcher – Green (nice color; scarce)
- ___267. 10 3/8" Imperial Hattie Flat Chop Plate – Green (actually quite a nice example w/ gold highlights)
- ___268. **IMPERIAL GRAPE HANDLED WATER PITCHER – PURPLE (SUPER ITEM W/ BRIGHT IRID.; NICE)**
- ___269. Imperial Grape Tumbler – Purple (matches pitcher; really nice)
- ___270. **PAIR IMPERIAL 6-SIDED CANDLESTICKS – PURPLE (VERY RARE PAIR – A SUPER SET W/ FANTASTIC IRID.)**
- ___271. **PAIR 9" TALL IMPERIAL STRETCH CHESTERFIELD CANDLESTICKS – WHITE (VERY SCARCE PAIR; FROSTY W/ GREAT IRID.)**
- ___272. **PAIR 8 3/8" TALL IMPERIAL STRETCH DOUBLE SCROLL CANDLESTICKS – RED/ AMBERINA (RARE PAIR; REALLY NICE COLOR; WELL MATCHED)**
- ___273. **PAIR IMPERIAL STRETCH #22/27 BREAKFAST OPEN SUGAR AND CREAMER – RED (GREAT PAIR W/ WONDERFUL COLOR & IRID.)**
- ___274. **2 1/8" TALL X 2" TOP DIAM. IMPERIAL WIDE PANEL FTD. INDIVIDUAL SALT – PURPLE (I HAVE NOT SEEN THIS ITEM BEFORE – REALLY NEAT)**
- ___275. **9 1/4" TAL; IMPERIAL FREEHAND ART GLASS LG. 2-HANDLED VASE – BLUE (RARE & DESIRABLE ITEM; GREAT COLOR & BEAUTIFUL IRID.)**
- ___276. 7" Tall Imperial Lead Lustre Art Glass Bulbous Flared Vase – Mari. Int./ Blue Glass (scarce & very desirable; nice item)
- ___277. 10" Tall Imperial Lead Lustre Round Based Tall Flared Vase - Mari. Int./ Gray Glass (scarce item w/ nice irid.; tough item)
- ___278. 7" Tall x 6 5/8" Top Diam. Imperial Interior Panels Squatty Flared Vase – Dk. Mari./ Milk Glass (great color & size; a beauty!)
- ___279. **3 1/2" TALL X 10 1/2" DIAM. IMPERIAL INTERIOR PANELS SQUATTY FLARED BOWL FROM VASE MOLD – DK. MARI./ MILK GLASS (RARE SIZE & SHAPE; VERY DESIRABLE ITEM)**
- ___280. **7" IMPERIAL HEAVY GRAPE 8 RUFFLED BOWL – ELEC. BLUE (EXTREMELY RARE BASE COLOR W/ SUPER IRID.)**
- ___281. 10 3/4" Imperial Grape Lg. 8 Ruffled Master Berry Bowl – Cobalt Blue (scarce item w/ color; some spotty irid.)
- ___282. Imperial Autumn Leaf 6 Ruffled Shade – Smoke (rare shade w/ excellent irid.)
- ___283. Imperial Signed Nuart Stretch Interior Panel Light Shade – Smoke (nice stretch effect; great color)
- ___284. 6" Tall Imperial Heavy Diamonds ftd. Flared Vase – Smoke (scarce item & has nice irid.)
- ___285. **IMPERIAL CORN BOTTLE – SMOKE (RARE ITEM; VERY DESIRABLE W/ EXCELLENT IRID.)**
- ___286. **3" TALL IMPERIAL 474 STEMMED CORDIAL – MARI. (EXTREMELY RARE ITEM; RARE SIZE W/ NICE COLOR)**
- ___287. **3 1/2" TALL IMPERIAL FLUTE AND CANE STEMMED CORDIAL – MARI. (ANOTHER NICE SIZED ITEM; QUITE RARE)**
- ___288. 8" Tall x 4 3/4" Base Imperial Zipper Loop Kerosene Lamp – Dk. Mari. (very scarce; nice color & irid.)
- ___289. **9" IMPERIAL GRAPE LOW 8 RUFFLED BOWL – LT. MARI. OPAL. (RARE COLORED ITEM; NICE OPAL EFFECT)**
- ___290. **7" IMPERIAL WINDMILL DEEP ROUND BOWL – MARI./ MOONSTONE (RARE, RARE COLOR FOR THIS ITEM; GREAT COLOR)**
- ___291. (2) 5 1/2" M'burg Peacock at the Urn ind. Flared Berry Bowls – Amethyst (radium one is super; great color; selling choice)
- ___292. 5 1/4" M'burg "Proof" Peacock at the Urn ind. Flared Berry Bowl – Amethyst (rare variation w/ great irid.; nice; Shot Gun variety)
- ___293. 9" M'burg Peacock at the Urn Round Flared Master Berry Bowl – Amethyst (no bee, no beading; odd flare; radium)
- ___294. 9 1/2" M'burg Peacock at the Urn Flared Master Berry Bowl – Pastel Mari. (light super iridized item; nice)
- ___295. **7" TALL M'BURG DEEP GRAPE 4-SIDED SQUARE STEMMED COMPOTE – AMETHYST (VERY RARE & VERY DESIRABLE; SATINY ITEM)**
- ___296. **9 1/2" M'BURG PRIMROSE 6 RUFFLED BOWL – AMETHYST (THE BEST EVER!! FANTASTIC EXAMPLE)**
- ___297. **9 3/8" M'BURG PRIMROSE 6 RUFFLED CRIMPED EDGE BOWL – GREEN (RADIUM & REALLY NICE; GREAT COLOR & IRID.)**
- ___298. 8 1/4" M'burg Trout and Fly IC Shaped Bowl – Amethyst (very desirable item w/ a nice satiny finish)
- ___299. 8 1/4" M'burg Trout and Fly IC Shaped Bowl – Mari. (satiny and nice; tough to find)
- ___300. **5 3/8" TALL M'BURG WILDFLOWER ROUND FLARED STEMMED COMPOTE – MARI. (RARE & DESIRABLE ITEM; SUPER RADIUM FINISH – SO TOUGH TO FIND)**
- ___301. **6 5/8" M'BURG "CAMPBELL & BEESLEY CO.- SPRING OPENING 1911" ADVERTISING HANDGRIP PLATE – AMETHYST (RARE & DESIRABLE ITEM W/ ABOVE AVERAGE IRID.)**
- ___302. **6 1/4" M'BURG "THE GREAT HOUSE OF ISAAC BENESCH & SONS" ADVERTISING 6 RUFFLED BOWL – AMETHYST (SCARCE; REALLY NICE EXAMPLE)**
- ___303. **M'BURG SEACOAST PIN TRAY – GREEN (VERY DESIRABLE ITEM; REALLY NICE IRID.)**
- ___304. 7" M'burg Little Stars IC Shaped Bowl – Green (rare shape; nice satiny finish)

- ___ 305. **5 5/8" M'BURG PEACOCK AT THE URN IC SHAPED SAUCE – BLUE (RARE ITEM W/ A NICE SATINY FINISH)**
- ___ 306. **9 1/2" M'burg Whirling Leaves Tri-Cornered Crimped Edge Bowl – Lt. Mari. (very desirable item; light in color)**
- ___ 307. **9" M'BURG SEAWEED LOW IC SHAPED BOWL/ PLATE – GREEN (RARE & VERY DESIRABLE ITEM W/ BRIGHT SATINY FINISH)**
- ___ 308. **10" M'BURG SEAWEED LG. 6 RUFFLED BOWL – AMETHYST (VERY ATTRACTIVE ITEM; REALLY NICE SATINY FINISH)**
- ___ 309. **10 1/4" M'burg Seaweed Lg. Bowl w/ 3 in 1 Edge – Mari. (another very attractive item; nice)**
- ___ 310. **7 7/8" M'BURG DOZEN ROSES 3 FTD. ROUND FLARED BOWL – AMETHYST (RARE PATTERN W/ EXCELLENT IRID.; REALLY NICE)**
- ___ 311. **8 3/4" M'burg Hanging Cherries 6 Ruffled Bowl – Amethyst (radium item w/ a mirror finish)**
- ___ 312. **9 3/4" M'burg Whirling Leaves low IC Shaped Bowl (Plate-wannabe) – Mari. (haven't seen one quite like this; satiny)**
- ___ 313. **12" TALL M'BURG BULLSEYE LOOP SWUNG VASE – GREEN (GREAT COLOR & IRID.; REALLY SWUNG)**
- ___ 314. **CAMBRIDGE VENETIAN GIANT ROSE BOWL – DK. MARI. (RARE CAMBRIDGE PIECE; HAS SUPER COLOR & IRID.)**
- ___ 315. **(2) 16" TALL X 5 1/4" BASE N TREE TRUNK SQUATTY FLARED FUNERAL VASES – PURPLE (VERY RARE AND DESIRABLE PAIR – "TWINS"; SELLING ONE OR BOTH CHOICE)**
- ___ 316. **13 1/2" TALL X 4 3/4" BASE N TREE TRUNK MID-SIZE SWUNG VASE W/ PLUNGER BASE – PURPLE (RARE VARIATION; GREAT COLOR & IRID.; NICE)**
- ___ 317. **11 1/2" TALL X 3 3/4" BASE N TREE TRUNK MID-SIZE SWUNG VASE W/ PLUNGER BASE – MARI. (ANOTHER RARE VARIATION; TOUGH COLOR TO FIND)**
- ___ 318. **12 1/2" Tall x 4 3/4" Base N Tree Trunk Mid-Size Swung Vase – Purple (scarce; nice color & irid.)**
- ___ 319. **12 1/4" Tall x 4 3/4" Base N Tree Trunk Mid-Size Swung Vase – Green (scarce; really nice color & irid.)**
- ___ 320. **10" TALL N TREE TRUNK STANDARD-SIZE SWUNG VASE – ICE BLUE (ALWAYS DESIRABLE; NICE COLOR & IRID.)**
- ___ 321. **N DAISY AND DRAPE FTD. FLARED VASE – AQUA OPAL. (VERY DESIRABLE W/ EXCELLENT COLOR & IRID.)**
- ___ 322. **N PEACOCK AT THE FOUNTAIN STEMMED 6 RUFFLED COMPOTE W/ PLAIN EXT. – ICE BLUE (RARE AND TOUGH TO FIND; GREAT COLOR & IRID.)**
- ___ 323. **9 1/4" N PEACOCKS FLAT PLATE W/ RIBBED EXT. – LT. AMETHYST/ LAVENDER (AN ODD BASE COLOR; SUPER IRID.)**
- ___ 324. **10 3/8" N Peacock at the Urn All Over Stippled Lg. 8 Ruffled Bowl – Honey Mari. (tough shape to find; nice color & irid.)**
- ___ 325. **N DANDELION TANKARD WATER PITCHER – GREEN (VERY TOUGH BASE COLOR; NICE AND UNDERRATED)**
- ___ 326. **(2) N Dandelion Tumblers – Green (selling so much each for the pair)**
- ___ 327. **N ORIENTAL POPPY 6 PC. TANKARD WATER SET – PURPLE (POPULAR ITEM THAT IS VERY ATTRACTIVE)**
- ___ 328. **8 3/4" N Greek Key 8 Ruffled Bowl w/ Ribbed Ext. – Purple (excellent irid.; really nice item)**
- ___ 329. **9" N Greek Key 8 Ruffled Bowl w/ Ribbed Ext. – Dk. Mari. (another item that's as good as it gets)**
- ___ 330. **N ACORN BURRS 7 PC. WATER SET – PURPLE (VERY SCARCE SET W/ NICE COLOR & IRID.)**
- ___ 331. **N Acorn Burrs 8 pc. Ruffled Punch Set – Ice Blue (an "AS IS" set; bowl cracked – base and cups are ok)**
- ___ 332. **N 8-Sided Handled Bushel Basket – Green (excellent example; really nice)**
- ___ 333. **N Round Handled Bushel Basket – Ice Blue Opal. (scarce; nice base color)**
- ___ 334. **N Round Handled Bushel Basket – Amethyst (nice color & irid.)**
- ___ 335. **N DIAMOND POINT 2-HANDLED BUSHEL BASKET – BLUE (RARE AND DESIRABLE; SO VERY TOUGH TO FIND)**
- ___ 336. **N DIAMOND POINT 2-HANDLED BUSHEL BASKET – DK. MARI. (ANOTHER RARE ITEM; NICE)**
- ___ 337. **N Diamond Point 2-Sided 2-Handled Bushel Basket – Ebony (odd; non-iridized item)**
- ___ 338. **N Grape and Gothic Arches 7 pc. Water Set – Blue (very scarce set w/ nice color)**
- ___ 339. **N Grape and Gothic Arches Tumbler – Blue (nice color)**
- ___ 340. **N WISHBONE SINGLE LILY EPERGNE – ICE BLUE (VERY RARE ITEM; GREAT COLOR; BASE OF LILY IS ROUGH)**
- ___ 341. **N WISHBONE SINGLE LILY EPERGNE – GREEN (VERY SCARCE SET; NICE COLOR & IRID.)**
- ___ 342. **9 1/2" N Wishbone Bowl w/ PCE and Plain Ext. – Amethyst (super example; nice irid.; scarce variation)**
- ___ 343. **N Raspberry Handled Water Pitcher and (3) Tumblers – Purple (selling as a 4 pc. set; nice color)**
- ___ 344. **N Raspberry Handled Milk Pitcher – Purple (scarce; nice color & irid.)**
- ___ 345. **N G&C LG. OPEN STEMMED RUFFLED COMPOTE – GREEN (SCARCE; NICE COLOR & IRID.)**
- ___ 346. **N G&C LG. OPEN STEMMED RUFFLED COMPOTE – PURPLE (GREAT COLOR & IRID.; AN UNDERPRICED ITEM)**

- ___ 347. **8 1/2" N STRAWBERRY STIPPLED 8 RUFFLED BOWL W/ NON-IRIDIZED RIBBED EXT. – RENNINGER BLUE (TOUGH COLOR & VERY SCARCE; NICE)**
- ___ 348. N Dandelion Handled Mug – Blue (scarce color; nice)
- ___ 348A. **N DANDELION HANDLED MUG W/ KNIGHTS TEMPLAR ADV. – ICE GREEN (RARE & VERY DESIRABLE W/ NICE COLOR & IRID.)**
- ___ 348B. **N DANDELION HANDLED MUG W/ KNIGHTS TEMPLAR ADV. – ICE BLUE (ANOTHER RARE & VERY DESIRABLE ITEM; NICE)**
- ___ 348C. **N DANDELION HANDLED MUG W/ KNIGHTS TEMPLAR ADV. – DK. MARI. (RARE & DESIRABLE; NICE COLOR & IRID.)**
- ___ 348d. N Dandelion Handled Mug – Aqua Opal. (very scarce & has opal on edge w/ a marigold overlay; super example)
- ___ 349. N Round Handled Bushel Basket – Custard/ Nutmeg (scarce item; nice Nutmeg Decoration)
- ___ 350. **10 1/2" TALL N TREE TRUNK STANDARD-SIZE SWUNG VASE – AQUA/ SAPPHIRE (RARE COLOR & TOUGH TO FIND; REALLY NICE)**
- ___ 351. 12" Tall Fenton Fine Rib Mid-Size Swung Vase – Aqua/ Sapphire (scarce Fenton item; nice color & irid.)
- ___ 352. Fenton Kittens 4-Sided Square Bowl – Mari. (always scarce)
- ___ 353. **FENTON HOLLY 6 RUFFLED HAT – RED (NICE COLOR; GOOD RED)**
- ___ 354. 7 5/8" Fenton Acorns low 8 Ruffled Bowl – Dk. Amber (nice item; scarce base color)
- ___ 355. **PAIR 8 1/2" TALL FENTON STRETCH FLORENTINE CANDLESTICKS – RED (EXTREMELY RARE PAIR; WELL MATCHED AND NICE)**
- ___ 356. **PAIR 8 3/4" TALL FENTON STRETCH FLORENTINE CANDLESTICKS W/ CUT OVAL DESIGN – GRECIAN GOLD (RARE PAIR IN THIS VARIATION; NICE COLOR)**
- ___ 357. Pair 8 1/2" Tall Fenton Stretch Florentine Candlesticks – Grecian Gold (nice dark color)
- ___ 358. Pair 8" Tall Fenton Stretch #549 Candlesticks – Celeste Blue (scarce pair w/ nice color & irid.)
- ___ 359. 9" Fenton Stretch Cupped-In Console Bowl – Red (scarce items; great color & irid.)
- ___ 360. **FENTON STRETCH #59 PERFUME BOTTLE AND STOPPER – WISTERIA (VERY RARE & SO TOUGH TO FIND; HAS GREAT COLOR)**
- ___ 361. **FENTON CHERRY CIRCLES 2 HANDLED ROUND BON BON – EMERALD GREEN (GREAT COLOR & IRID.; VERY DESIRABLE)**
- ___ 362. 7 3/4" Fenton Dragon and Lotus Spatula ftd. IC Shaped Bowl – Amethyst (super irid.)
- ___ 363. 8" Fenton Dragon and Lotus Spatula ftd. 8 Ruffled Bowl – Amethyst (super irid.)
- ___ 364. 8" Tall Fenton Butterfly and Berry Swung Vase – Amber (very scarce base color)
- ___ 365. **8" FENTON G&C BALL FTD. 8 RUFFLED BOWL – CELESTE BLUE (VERY RARE & VERY DESIRABLE; SUPER ITEM)**
- ___ 366. Fenton 2-Row Open Edge Large-Size 2-Sided Basketweave Bowl – Celeste Blue (great color & irid. w/ a great shape)
- ___ 367. Fenton 2-Row Open Edge Large-Size 4-Sided Basketweave Bowl – Celeste Blue (very scarce; nice color & irid.)
- ___ 368. Fenton 2-Row Open Edge 2-Sided Hat – White (scarce; nice and frosty)
- ___ 369. Fenton 2-Row Open Edge 6 Ruffled Hat – Red (scarce; nice)
- ___ 370. **FENTON 2-ROW OPEN EDGE 2-SIDED HAT – REVERSE AMBERINA W/ OPAL TIPS (VERY SCARCE COLOR; REALLY NICE)**
- ___ 371. **FENTON FINE RIB INTERIOR SPITTOON FROM LG. MASTER BERRY BOWL – DK. MARI. (EXTREMELY RARE WHIMSEY FROM LARGE BERRY BOWL)**
- ___ 372. **FENTON ORANGE TREE COVERED POWDER JAR – AMETHYST (RARE BASE COLOR; TOUGH ITEM)**
- ___ 373. **FENTON MIKADO LG. RUFFLED COMPOTE – AMETHYST (VERY RARE COLOR FOR THIS PATTERN; NICE)**
- ___ 374. Fenton Mikado Lg. Ruffled Compote – Powder Blue/ Mari. (another scarce base color; nice)
- ___ 375. Fenton Leaf Tiers Light Shade - Mari./ Moonstone (great color & irid.)
- ___ 376. 7 1/2" Fenton Leaf Chain Flat Plate – Blue (satiny finish)

**Burns Auction would like to thank you all
for your attendance!**

**Please visit our website www.tomburnsauctions for 2019
up-coming carnival glass auction.**

1554 Golden Pond Drive
Minneola Florida 34715
Phone (407) 592•6552 or (503) 756•2629



FOR ALL PHOTOS AND LISTING
TOMBURNSAUCTIONS.COM

LIVE INTERNET BIDDING IS AVAILABLE FOR
THIS AUCTION VIA AUCTION FLEX-HIBID



Lot 300

TAMPA BAY CARNIVAL GLASS AUCTION SATURDAY FEBRUARY 9TH 2019



Lot 105



Lot 301



Lot 310



Lot 125



Lot 161



Lot 170



Lot 171



Lot 175



Lot 177



Lot 275



Lot 250



Lot 178