



Lot 290

# BURNS

AUCTION SERVICE LLC



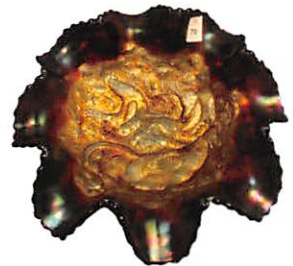
Lot 325



Lot 300

*Presents 2018*

## MID ATLANTIC CARNIVAL GLASS JAMBOREE AUCTION THE MIZELL CARNIVAL GLASS COLLECTION



Lot 70

**Saturday • October 20th, 2018 - 9:30 AM**

(Previews: Fri. Oct. 19th 8:00 pm-10:00 pm & Sat. Oct 20th- 7:30 am-9:30 am)

AT THE  
**RAMADA PLAZA HAGERSTOWN**  
1718 UNDERPASS WAY  
HAGERSTOWN, MARYLAND 21740  
RESERVATIONS: 301-797-2500



Lot 150



Lot 175



Lot 50



Lot 121



Lot 250

# 2018 MID ATLANTIC CGC JAMBOREE

SATURDAY OCTOBER 20<sup>TH</sup> 2018- 9:30 AM

Previews: Friday Evening, October 19<sup>th</sup> (After Banquet) & October 20<sup>th</sup> 7:30 - 9:30 am

RAMADA PLAZA HAGERSTOWN • 1718 UNDERPASS WAY • HAGERSTOWN MD 21740

Reservations: 301-797-2500

It's that Time Again! Fall is upon us, and Mid Atlantic CGC Jamboree Convention is here. Burns Auction Service is Proud to Present the Carnival Glass Collection of Sharon & the Late Bill Mizell. Sharon and Bill Have Been Long Time Collectors and Members of the Mid Atlantic Club. We will be selling Approx 375 Lots of Beautiful Carnival Glass for Your Bidding Pleasure. So Make your Convention Reservations and Come Join us on Saturday for the Auction. Hope to see you There!

## Absentee Bid Policy

Absentee/ Phone Bids are Gladly Accepted. Either by placing bids through our website or Contacting Our Office at 503.756.2629 or 407.592.6552. Can't Attend? We also will have online live Bidding Via Auction Flex/ HiBid. If you choose to use this service a 14% buyer's premium will apply to **ONLINE LIVE BIDDING ONLY. (There is NO Buyers Premium for in house, Absentee or Phone Bids)** This Feature allows you to bid right along with the auction as it is being conducted. Please refer to our website for all terms & Conditions of this sale.

## Live Phone Bidding

Please be sure to submit your phone bid request early. Due to limited Space, We Cannot Accept Phone Bids with a Pre- Auction Estimate below \$400.00. All Phone Bids Must Be Submitted by Friday October 19th, 6:00pm EST.

## Terms and Condition of Sale

Cash, Pre-Approved Checks, Visa, MasterCard, Discover & American Express Accepted.

A 4% Buyers Premium will Apply to all credit Card Purchases, With Exception of Cash or Check.

All Statements Made the Day of Sale will Take Precedence Over any and All Printed Material. All Items are Being Sold Without Guarantee or Warranty Applied, Regardless of Statements Made by Auctioneer or Staff. Auction Company is Not Responsible for any Accidents, Thefts, Breakage, or Sold Items. Burns Auction Service Reserves the Right to Withdraw any Property at any Time before and During Actual Sale. All Sales are Final Once and Item Leaves Auction Location!

**Please Visit our Website for Complete Listing and Photos of All Items to be Sold!**

[www.tomburnsauctions.com](http://www.tomburnsauctions.com)

**PUBLIC WELCOME!**

Debra Jo Burns  
Auctioneer  
503.756.2629

Thomas J. Burns  
Auctioneer  
407.592.6552



Mid-Atlantic Carnival Glass Jamboree Auction  
THE MIZELL CARNIVAL GLASS COLLECTION  
October 20, 2018

- \_\_\_ 1. (2) Rooster Hatpins – Ice Green (selling so much each)
- \_\_\_ 2. Dimples and Brilliants Hatpin – Dark (very scarce; nice)
- \_\_\_ 3. Elegance Hatpin – Dark (very scarce; very attractive)
- \_\_\_ 4. US Glass X-Ray Miniature Handled Creamer – Lt. Mari./ Enam. Floral (scarce item)
- \_\_\_ 5. Dugan Pastel Swan Master Salt – Lt. P. Opal. (scarce; nice color; light opal on head)
- \_\_\_ 6. Billy Baxter – His Clear Bottle Advertising Ash Tray – Mari. (scarce)
- \_\_\_ 7. (2) US Glass 1908 Shriners Champagne – Cranberry Flash (scarce)
- \_\_\_ 8. Dugan Stippled Estate Tri-Cornered Pinched-In Vase – Aqua (scarce)
- \_\_\_ 9. Golden Wedding Miniature Nip Bottle w/ Original Labels and Twist Cap – Lt. Mari. (nice item)
- \_\_\_ 10. **N DANDELION/ KNIGHTS TEMPLAR HANDLED MUG – ICE GREEN (RARE AND REALLY NICE; TOUGH TO FIND)**
- \_\_\_ 11. N Dandelion/ Knights Templar Handled Mug – Ice Blue (chipped on edge)
- \_\_\_ 12. **N DANDELION/ KNIGHTS TEMPLAR HANDLED MUG – DK. MARI. (GREAT COLOR W/ EXCELLENT IRID.; PINHEAD ON RIM)**
- \_\_\_ 13. Fostoria Brocaded Acorn Stemmed Cordial – Ice Blue (very scarce miniature; nice irid.)
- \_\_\_ 14. Fostoria Brocaded Acorn ftd. Flared Tumbler – Lavender (very scarce color; nice irid.)
- \_\_\_ 15. **SIGNED ROBERT HANSEN GROUSE W/ RUSHES VASE – DARK TEAL BLUE (SUPER IRID.; VERY SCARCE)**
- \_\_\_ 16. 7" Tall Signed Robert Hansen Handled Flower Basket – Amethyst/ Amber (scarce w/ an odd base color; great irid.)
- \_\_\_ 17. Signed Robert Hansen 6 Ruffled Cherry Wreath Spooner – Red (great color; super example)
- \_\_\_ 18. N Round Handled Bushel Basket – Ice Green (scarce)
- \_\_\_ 19. Westmoreland Hobstar and Fruit 2-Sided Card Tray – P. Opal. (scarce item)
- \_\_\_ 20. **9 1/4" FENTON DRAGON AND LOTUS FLAT PLATE – BLUE (VERY RARE ITEM; HAS NICE IRID. AND DETAIL; HAS A FLEA BITE ON POINT)**
- \_\_\_ 21. 7 1/8" Fenton Dragon and Lotus Round Flared "Nut" Bowl – Blue (rare shape w/ a nice satiny finish)
- \_\_\_ 22. 9" Fenton Dragon and Lotus 8 Ruffled Bowl – Blue (nice satiny finish)
- \_\_\_ 23. 7 7/8" Fenton Dragon and Lotus Round Spatula ftd. Bowl – Green (nice color)
- \_\_\_ 24. 7 3/4" Fenton Dragon and Lotus 8 Ruffled Spatula ftd. Bowl – Amethyst (nice color)
- \_\_\_ 25. **8 3/4" FENTON DRAGON AND LOTUS IC SHAPED BOWL – BRICK RED (ODD COLOR; NICE IRID.)**
- \_\_\_ 26. 7 5/8" Fenton Dragon and Lotus Round Spatula ftd. Bowl – Amethyst (nice color)
- \_\_\_ 27. 7 1/2" Fenton Vintage Grape Flat Plate – Green (has scuff next to rim; has a radium finish)
- \_\_\_ 28. 6 3/8" Fenton Cherry Chain Flat Plate – Mari. (nice satiny finish)
- \_\_\_ 29. 9 3/8" Fenton Three Fruits 12-Sided Plate – Green (wear on fruit)
- \_\_\_ 30. **7" FENTON STIPPLED RAYS FTD. FLAT PLATE – RED (VERY RARE COLOR FOR THIS PATTERN AND SHAPE; GOLDISH IRID.)**
- \_\_\_ 31. **6 3/8" FENTON SAILBOATS FLAT PLATE – BLUE (VERY SCARCE COLOR W/ EXCELLENT DETAIL; NICE)**
- \_\_\_ 32. **7 1/2" FENTON PINE CONE FLAT PLATE – AMBER – RARE COLOR IN A SCARCE SIZE; VERY NICE ITEM)**
- \_\_\_ 33. 9 1/4" Fenton Peacock at the Urn Plate – Blue (popular item w/ nice color & irid.)
- \_\_\_ 34. **10 1/4" FENTON PERSIAN MEDALLION CHOP PLATE – BLUE (SCARCE ITEM W/ VERY NICE COLOR & IRID.)**
- \_\_\_ 35. **8 3/4" FENTON HOLLY ICE CREAM SHAPED BOWL – CELESTE BLUE (VERY RARE COLOR TO FIND; HAS A 1/4" FLAKE ON INSIDE EDGE)**
- \_\_\_ 36. **9 5/8" FENTON HOLLY FLAT PLATE – WHITE W/ AMETHYST STREAKS (VERY DIFFERENT; HAS AN ODD TINT; SUPER IRID.)**
- \_\_\_ 37. 9 3/4" Fenton Holly Flared Plate – White (great irid.; really nice item)
- \_\_\_ 38. 10 1/8" Fenton Holly Flared Plate – Dk. Mari. (great color & irid.; nice and dark)



- \_\_\_39. 6 1/2" Fenton Stippled Rays 6 Ruffled Sauce – Amber (scarce color)
- \_\_\_40. **9 1/2" FENTON LEAF CHAIN FLAT PLATE – BLUE (ATTRACTIVE EXAMPLE W/ NICE MULTI-COLORED IRID.)**
- \_\_\_41. **9 1/4" FENTON LEAF CHAIN FLAT PLATE – DK. MARI. (GREAT COLOR & SUPER IRID.)**
- \_\_\_42. Fenton Chrysanthemum Bulbous Enameled Decorated Water Pitcher – Mari. (scarce)
- \_\_\_43. Fenton Wild Flower Enameled Decorated Tumbler – Mari. (scarce pattern)
- \_\_\_44. Fenton Cherries and Blossoms Bulbous Decorated Water Pitcher – Blue (nice color & irid.)
- \_\_\_45. **9 1/4" FENTON DRAGON AND STRAWBERRY LG. ICE CREAM SHAPED BOWL – BLUE (RARE AND VERY DESIRABLE; GREAT IRID.)**
- \_\_\_46. **8 3/8" FENTON CONCORD GRAPE BOWL W/ 3 IN 1 EDGE – AMETHYST (SUPER EXAMPLE W/ BLUE HIGHLIGHTS; NICE!)**
- \_\_\_47. Fenton Fentonia Tumbler – Blue (scarce; tiny spotty area)
- \_\_\_48. (2) Fenton Enameled Periwinkle Tumblers – Mari. (selling 2 for 1; scarce)
- \_\_\_49. **FENTON 3 ROW OPEN EDGE BASKETWEAVE LG. 2-SIDED BOWL – WHITE (VERY SCARCE; GREAT IRID.; NICE & FROSTY)**
- \_\_\_50. **8 7/8" N NIPPON FLARED PLATE W/ PLAIN EXT. – ICE BLUE (EXTREMELY RARE; GREAT IRID.; ONE OF A COUPLE KNOWN)**
- \_\_\_51. 8 5/8" N Nippon Bowl w/ PCE and Ribbed Ext. – Ice Blue (scarce w/ really nice irid.)
- \_\_\_52. **9" N NIPPON FLARED PLATE W/ BASKETWEAVE EXT. – GREEN (RARE & DESIRABLE; HAS VERY NICE COLOR & IRID.)**
- \_\_\_53. 8 3/4" N Good Luck Bowl w/ PCE and Ribbed Ext. – Dk. Mari. (excellent color & irid.; nice)
- \_\_\_54. N 8-Sided Handled Bushel Basket – Dk. Mari. (nice color)
- \_\_\_55. **N RASPBERRY TUMBLER – EMERALD GREEN (GREAT COLOR W/ BLUE HIGHLIGHTS)**
- \_\_\_56. N Raspberry Handled Water Pitcher and (1) Tumbler – Green (selling 2 for 1; both have nice color)
- \_\_\_57. N Raspberry Tumbler – Ice Blue (rare color; tough to find; has interior soot)
- \_\_\_58. 9 1/2" N Peacocks at the Urn Lg. Ice Cream Bowl – Mari. (scarce; nice color)
- \_\_\_59. 9 1/4" N Strawberry Plate w/ Basketweave Ext. – Amethyst (very scarce w/ a bright satiny finish)
- \_\_\_60. **9" N PEACOCKS STIPPLED PLATE W/ RIBBED EXT. AND NARROW BASE – RENNINGER BLUE (RARE & DESIRABLE; GREAT BASE COLOR & IRID.)**
- \_\_\_61. **9" N PEACOCKS PLATE W/ RIBBED EXT. – PURPLE (VERY SCARCE W/ GREAT IRID.; REALLY NICE)**
- \_\_\_62. 9" N Peacocks Plate w/ Ribbed Ext. – White (scarce w/ great irid.)
- \_\_\_63. (2) Peacock at the Fountain Handled Punch Cup – (1) Purple (1) Renninger Blue (cracked); both are nice; selling 2 for 1)
- \_\_\_64. N Hearts and Flowers 8 Ruffled Bowl w/ Ribbed Ext. – Ice Blue (very scarce; nice popular item)
- \_\_\_65. **8 3/4" N THREE FRUITS PLATE W/ PLAIN EXT. – PURPLE (SUPER EXAMPLE W/ EXCELLENT IRID.; NICE)**
- \_\_\_66. 9" N Three Fruits Plate w/ Basketweave Ext. – Green (nice example; minor wear on fruit)
- \_\_\_67. 9" N Three Fruits Plate w/ Plain Ext. – Dk. Mari. (super example; has the best irid.; nice)
- \_\_\_68. 9" N Grape and Cable Variant Plate w/ Basketweave Ext. – Mari. (nice satiny finish)
- \_\_\_69. N Grape and Cable Cologne Bottle and Stopper – Dk. Mari. (well matched; great color & irid.)
- \_\_\_70. **10 1/4" DUGAN FARMYARD LG. 8 RUFFLED BOWL W/ JEWEL HEART EXT. – PURPLE (RARE & DESIRABLE; NICE GOLD HIGHLIGHTS)**
- \_\_\_71. **6 3/4" DUGAN GRAPEVINE LATTICE FLARED PLATE – PURPLE (ABSOLUTELY SUPER COLOR & IRID.; EXCELLENT)**
- \_\_\_72. (1) 7 1/2" Dugan Grapevine Lattice Flat Plate – Amethyst and (1) 7" Dugan Grapevine Lattice Flat Plate – Mari. (selling 2 for 1; Amethyst example is really nice)
- \_\_\_73. 7 3/8" Dugan Flowers and Beads Exterior Flat Plate – Purple (super example; nice)
- \_\_\_74. Dugan Heavy Iris Tumbler – Purple (scarce; nice color)
- \_\_\_75. **7 3/4" TALL DUGAN CIRCLE SCROLL SWUNG VASE – PURPLE (VERY DESIRABLE; HAS NICE BRIGHT IRID.)**
- \_\_\_76. 10 1/2" Tall Dugan Lined Lattice Swung Vase – Purple (scarce; nice irid.)



- \_\_\_77. **8 1/2" DUGAN BROOKLYN BRIDGE 10 RUFFLED BOWL – MARI. (VERY SCARCE; HAS A RADIUM TYPE IRID.)**
- \_\_\_78. Dugan Grape Delight 6 ftd. Ruffled Rose Bowl – Dk. Mari. (super irid.)
- \_\_\_79. (1) Dugan Many Fruits Handled Punch Cup and (1) Dugan S-Repeat Handled Tri-Cornered Nappy – Purple (super cup; sauce is nice)
- \_\_\_80. **9 1/4" IMPERIAL SHELL FLAT PLATE – SMOKE (EXCELLENT IRID.; REALLY NICE; 2 EDGES DID NOT FILL IN)**
- \_\_\_81. 6" Tall Imperial Heavy Diamonds ftd. Vase – Smoke (very scarce color for this item)
- \_\_\_82. **5 1/8" IMPERIAL GRAPE DEEP ROUND NUT BOWL – DK. MARI. (RARE SHAPE W/ VERY NICE COLOR & IRID.)**
- \_\_\_83. 6 3/4" Imperial Grape Deep Round Bowl – Purple (super color & irid.)
- \_\_\_84. Imperial Fashion Giant Rose Bowl – Dk. Mari. (great color & irid.; has tiny bruise inside)
- \_\_\_85. **9 1/2" TALL X 8 1/2" TOP DIAM. X 4 7/16" BASE IMPERIAL INTERIOR PANELS SQUATTY FLARED VASE W/ WHEEL CUT ETCHED DESIGN AND SIGNED W/ IRON CROSS – MARI. (VERY DESIRABLE ITEM IN COLOR & SIZE; HAS SATINIZED EXTERIOR)**
- \_\_\_86. 12" Tall Imperial Beaded Bullseye Swung Vase – Purple (super color & irid.)
- \_\_\_87. 12" Tall Imperial Freefold Swung Vase – Purple (absolutely super color & irid.; nice)
- \_\_\_88. 12" Tall Imperial Ripple Standard Swung Vase – Amber (really tall example; nice base color)
- \_\_\_89. (2) Imperial Flute Toothpick Holders – (1) Purple (1) Green (selling 2 for 1)
- \_\_\_90. **9 1/4" IMPERIAL EMBOSSED SCROLL FLAT PLATE – PURPLE (SUPER IRID. AND VERY FLAT; REALLY NICE)**
- \_\_\_91. **10 3/8" IMPERIAL HATTIE CHOP PLATE – GREEN (ACTUALLY QUITE A NICE EXAMPLE; VERY DESIRABLE)**
- \_\_\_92. Imperial Field Flower Tumbler – Purple (very nice; great color & irid.)
- \_\_\_93. (2) Imperial Lustre Rose Tumblers – Purple (2 really nice examples; selling 2 for 1)
- \_\_\_94. (1) Imperial Grape Tumbler, (1) Imperial Handled Punch Cup and (1) Imperial Stemmed Wine Glass – Purple (selling all 3 for 1; all are excellent examples)
- \_\_\_95. 8 1/2" Imperial Star of David 8 Ruffled Bowl – Purple (scarce; really nice example)
- \_\_\_96. Imperial Windmill Tumbler – Purple (super example; nice)
- \_\_\_97. 4 pc. Lot: (1) Imperial Diamond Lace Tumbler – Purple (chip on base), (1) Imperial Tiger Lily Tumbler – Green, (1) Cambridge Double Star Tumbler – Green and (1) Cambridge Inverted Strawberry Powder Jar – Green w/ damaged lid (selling all for 1 money)
- \_\_\_98. (2) N Singing Birds Tumblers – Green (selling 2 for 1)
- \_\_\_99. (1) N Peacock at the Fountain Tumbler – Blue and (1) N Peacock at the Fountain Tumbler – Dk. Mari. (both are nice items; great examples)
- \_\_\_100. **10 1/2" N GRAPE AND CABLE LARGE ICE CREAM BOWL W/ BASKETWEAVE EXT. – ICE BLUE (EXTREMELY RARE COLOR; GREAT IRID.)**
- \_\_\_101. 5 3/4" N Grape and Cable Individual Ice Cream Bowl w/ Basketweave Ext. – Ice Blue (very tough to find; nice color & irid.)
- \_\_\_102. **10 1/4" N GRAPE AND CABLE LARGE ICE CREAM BOWL W/ BASKETWEAVE EXT. – ICE GREEN (ANOTHER RARE EXAMPLE; GREAT IRID.; NICE)**
- \_\_\_103. 5 5/8" N Grape and Cable Individual Ice Cream Bowl w/ Basketweave Ext. – Ice Green (another very tough item to find; nice)
- \_\_\_104. **10 1/4" N GRAPE AND CABLE LARGE ICE CREAM BOWL W/ BASKETWEAVE EXT. – WHITE (VERY SCARCE; REALLY NICE IRID.)**
- \_\_\_105. 5 3/4" N Grape and Cable Individual Ice Cream Bowl w/ Basketweave Ext. – White (harder to find than the large example; nice irid.)
- \_\_\_106. **10 1/4" N GRAPE AND CABLE LARGE ICE CREAM BOWL W/ BASKETWEAVE EXT. – ELEC. BLUE (RARE W/ EXCELLENT BLUE HIGHLIGHTS; NICE)**
- \_\_\_107. **10 1/4" N GRAPE AND CABLE LARGE ICE CREAM BOWL W/ BASKETWEAVE EXT. – GREEN (ANOTHER RARE COLOR; TOUGH TO FIND)**
- \_\_\_108. 10 1/2" N Grape and Cable Large Ice Cream Bowl w/ Basketweave Ext. – Amethyst (scarce w/ a nice light base color)
- \_\_\_109. 6" N Grape and Cable Individual Ice Cream Bowl w/ Basketweave Ext. – Amethyst (nice irid.)



- \_\_\_ 110. 11" N Grape and Cable Large Ice Cream Bowl w/ Basketweave Ext. – Purple (scarce w/ nice irid.)
- \_\_\_ 111. 10 1/4" N Grape and Cable Large Ice Cream Bowl w/ Basketweave Ext. – Pastel Mari. (great irid.; nice)
- \_\_\_ 112. 10" N Grape and Cable Large Ice Cream Bowl w/ Basketweave Ext. – Mari. (nice color & irid.)
- \_\_\_ 113. N Wild Rose ftd. Flared Candy Dish w/ Stippled Rays Int. – Dk. Mari. (super irid.)
- \_\_\_ 114. 8" N Leaf and Beads ftd. Flared "Plate" – Green (odd shape w/ a radium finish)
- \_\_\_ 115. **9 3/4" N WISHBONE FLARED PLATE W/ BASKETWEAVE EXT. – DK. MARI. (VERY SCARCE ITEM; AN EXCELLENT EXAMPLE)**
- \_\_\_ 116. **8 1/2" N WISHBONE FTD. 8 RUFFLED BOWL W/ RUFFLES AND RINGS EXT. – WHITE (RARE; GREAT FROSTY COLOR & IRID.; NICE)**
- \_\_\_ 117. **8 1/2" N WISHBONE FTD. 8 RUFFLED BOWL W/ RUFFLES AND RINGS EXT. – BLUE (RARE COLOR TO FIND W/ BRIGHT HIGHLIGHTS)**
- \_\_\_ 118. 8 1/4" N Wishbone ftd. 8 Ruffled Bowl w/ Ruffles and Rings Ext. – Green (nice color)
- \_\_\_ 119. 8 1/4" N Wishbone ftd. 8 Ruffled Bowl w/ Ruffles and Rings Ext. – Purple (nice color)
- \_\_\_ 120. 8 1/4" N Wishbone ftd. 8 Ruffled Bowl w/ Ruffles and Rings Ext. – Mari. (nice irid.)
- \_\_\_ 121. **N WISHBONE 7 PC. BULBOUS WATER SET – AMETHYST (VERY RARE SET TO FIND; WELL MATCHED)**
- \_\_\_ 122. N Dandelion Handled Mug – Purple (scarce w/ excellent irid.)
- \_\_\_ 123. N Dandelion Handled Mug – Dk. Mari. (great color w/ nice irid.)
- \_\_\_ 124. N Beaded Cable ftd. Ruffled Rose Bowl – Aqua Opal. (scarce w/ a Butterscotch overlay)
- \_\_\_ 125. **N PEACOCK AT THE URN LG. ICE CREAM BOWL – GREEN (VERY RARE COLOR; TOUGH TO FIND; SPOTTY EXTERIOR)**
- \_\_\_ 126. **N PEACOCK AT THE URN LG. ICE CREAM BOWL – ICE GREEN (RARE W/ GREAT COLOR & IRID.)**
- \_\_\_ 127. **N PEACOCK AT THE URN LG. ICE CREAM BOWL – ICE BLUE (ANOTHER RARE ITEM W/ GREAT IRID.; NICE)**
- \_\_\_ 128. N Peacock at the Urn Lg. Ice Cream Bowl – White (scarce w/ excellent irid.)
- \_\_\_ 129. N Peacock at the Urn Lg. Ice Cream Bowl – Dk. Mari. (great color & irid.; very nice)
- \_\_\_ 130. **US GLASS PALM BEACH 6 PC. TABLE SET – DECORATED CRYSTAL (SCARCE SET W/ "LIKE BRAND NEW" DECORATION)**
- \_\_\_ 131. **5 3/4" TALL US GLASS PALM BEACH WHIMSEY SWUNG VASE – MARI. (VERY SCARCE ITEM IN THIS SHAPE)**
- \_\_\_ 132. US Glass Palm Beach 2-Sided Banana Dish – Mari./ Goofus (scarce shape; tough to find)
- \_\_\_ 133. US Glass Palm Beach Rose Bowl – Mari./ Goofus (scarce w/ excellent decoration)
- \_\_\_ 134. 8" Dugan Double Stem Rose domed Deep Round Bowl – Amethyst (nice irid.)
- \_\_\_ 135. **5" TALL X 5 1/4" TOP DIAM. DUGAN LINED LATTICE SQUATTY FLARED VASE – PURPLE (ABSOLUTELY SUPER IRID.)**
- \_\_\_ 136. 5 5/8" Tall x 5 3/4" Top Diam. Dugan Lined Lattice Squatty Flared Vase – Crystal (actually a tough item to find)
- \_\_\_ 137. **11" TALL DUGAN BIG BASKETWEAVE SWUNG VASE – AMETHYST (SCARCE & VERY DESIRABLE; NICE ITEM)**
- \_\_\_ 138. 11 1/2" Tall Dugan Spiralex Swung Vase – Amethyst (super example; nice)
- \_\_\_ 139. 7" Tall Dugan Many Ribs 6-Sided Swung Vase – Purple (nice irid.)
- \_\_\_ 140. **DUGAN BEADED SHELL HANDLED MUG – WHITE (RARE & UNDERPRICED; HAS EXCELLENT IRID.)**
- \_\_\_ 141. Dugan Beaded Shell Handled Mug – Dk. Mari. (Souvenir of York PA; fantastic example)
- \_\_\_ 142. Dugan Beaded Shell Handled Mug – Purple (Souvenir of York PA; excellent irid.)
- \_\_\_ 143. **FENTON RUFFLED RIB 2-SIDED SPITTOON – MARI. (THESE ARE QUITE RARE; REALLY NICE SHAPE)**
- \_\_\_ 144. Fenton Ruffled Rib Tri-Cornered Spittoon – Mari. (tough to find; nice color)
- \_\_\_ 145. **9 1/2" FENTON SPECTOR'S DEPARTMENT STORE/ HEARTS AND VINE FLAT PLATE – DK. MARI. (RARE & DESIRABLE ITEM; NICE DARK COLOR)**
- \_\_\_ 146. 9 3/4" Fenton Holly Flat Plate – Amethyst (scarce w/ nice bright satiny finish)
- \_\_\_ 147. 9 3/4" Fenton Holly Flat Plate – Blue (nice example w/ nice irid.)
- \_\_\_ 148. Fenton Fern Panels 6 Ruffled Crimped Hat – Red (bruising in base; damaged)
- \_\_\_ 149. Fenton 2 Row Open Edge Basketweave JIP Hat – Red (nice color; gold irid.)



- \_\_\_ 150. **N DAISY AND DRAPE FTD. TURNED-IN VASE – GREEN (EXTREMELY RARE IN THIS COLOR; ONLY A FEW KNOWN)**
- \_\_\_ 151. N Daisy and Drape ftd. Turned-In Vase – White (scarce; nice and frosty)
- \_\_\_ 152. 7 3/4" Tall N Drapery Swung Vase – Lime Ice Green (odd; scarce base color)
- \_\_\_ 153. 7 1/2" Tall N Drapery Swung Vase – Dk. Mari. (nice color)
- \_\_\_ 154. 6 3/4" Tall N Tree Trunk Squatty Flared Vase – Green (bright satiny finish)
- \_\_\_ 155. **9 3/8" N PEACOCKS STIPPLED PLATE W/ RIBBED EXT. AND NARROW BASE – PURPLE (RARE VARIATION OF THIS POPULAR PATTERN)**
- \_\_\_ 156. 9" N Peacocks Stippled Flared Plate w/ Ribbed Ext. – Dk. Mari. (really nice dark color)
- \_\_\_ 157. **9" N PEACOCKS FLARED PLATE W/ RIBBED EXT. – SODA GOLD AMETHYST (VERY SCARCE BASE COLOR; REALLY NICE)**
- \_\_\_ 158. **9" N PEACOCKS PLATE W/ RIBBED EXT. – GREEN (RARE & DESIRABLE; NICE; HAS PIGMENT IN GLASS)**
- \_\_\_ 159. **N SINGING BIRDS HANDLED WATER PITCHER – GREEN (VERY DESIRABLE; GREAT COLOR)**
- \_\_\_ 160. **N RASPBERRY HANDLED MILK PITCHER – LIME ICE GREEN (RARE & VERY DESIRABLE; REALLY TOUGH TO FIND)**
- \_\_\_ 161. N Raspberry Handled Milk Pitcher – White (nice irid.; has damage on base)
- \_\_\_ 162. N Raspberry Handled Milk Pitcher – Green (scarce w/ nice color & irid.)
- \_\_\_ 163. N Raspberry Handled Milk Pitcher – Dk. Mari. (nice color & irid.)
- \_\_\_ 164. N Daisy and Plume Stemmed 6 Ruffled Compote w/ Fern Int. – Mari.
- \_\_\_ 165. **8 1/2" N LATTICE AND POINSETTIA FTD. 8 RUFFLED BOWL W/ RIBBED EXT. – PURPLE (ALWAYS A POPULAR ITEM; REALLY NICE MULTI-COLORED IRID.)**
- \_\_\_ 166. **8 7/8" N SUNFLOWER FTD. 8 RUFFLED BOWL W/ MEANDER EXT. – DK. MARI. (A PUMPKIN MARIGOLD EXAMPLE; ONE OF THE BEST)**
- \_\_\_ 167. **N POPPY OVAL RUFFLED RELISH TRAY W/ RIBBED EXT. – ICE BLUE (RARE & DESIRABLE; NICE IRID.)**
- \_\_\_ 168. **N BUTTERFLY 2-HANDLED 4-SIDED BON BON W/ PLAIN EXT. – SMOKE (RARE BASE COLOR; NOT MANY TO BE HAD; NICE)**
- \_\_\_ 169. Millersburg Holly Whirl (Sprig) 2-Sided Deep Handled Bon Bon – Green (has a satiny finish)
- \_\_\_ 170. **10 1/4" MILLERSBURG MANY STARS 6 RUFFLED BOWL W/ 5 POINTED STAR – AMETHYST (EXCELLENT RADIUM EXAMPLE; GREAT ITEM)**
- \_\_\_ 171. **6 5/8" X 6 7/8" MILLERSBURG TROUT AND FLY 4-SIDED SQUARE BOWL – MARI. (RARE W. A SATINY FINISH; TOUGH TO FIND)**
- \_\_\_ 172. 8 3/4" Millersburg Trout and Fly Bowl w/ 3 in 1 Edge – Green (radium; nice; has a number of peeling areas on edge)
- \_\_\_ 173. 8 1/2" Millersburg Trout and Fly Ice Cream Shaped Bowl – Green (very scarce; satiny w/ minor wear on fish)
- \_\_\_ 174. 7 3/4" Millersburg Holly Sprig Variant Ice Cream Shaped Bowl – Mari. (super radium example)
- \_\_\_ 175. **MILLERSBURG MORNING GLORY TUMBLER – AMETHYST (EXTREMELY RARE & VERY DESIRABLE; NICE RADIUM FINISH)**
- \_\_\_ 176. Millersburg Marilyn Tumbler – Green (tough color to find; sorta radium)
- \_\_\_ 177. Millersburg Swirl Hobnail Rose Bowl – Purple (nice example w/ bright highlights)
- \_\_\_ 178. 5 3/4" Millersburg Cosmos 8 Ruffled Bowl – Green (odd shape w/ nice irid.)
- \_\_\_ 179. 8 1/4" Millersburg Mayan Ice Cream Shaped Bowl – Green (radium)
- \_\_\_ 180. **10" MILLERSBURG BERNHEIMER BROTHERS/ MANY STARS 6 RUFFLED BOWL W/ SMALL 5 POINTED STAR – BLUE (RARE & ALWAYS DESIRABLE MILLERSBURG ITEM; A REALLY NICE EXAMPLE)**
- \_\_\_ 181. 6 1/2" Millersburg Holly Sprig Tri-Cornered Bowl – Lt. Mari. (scarce shape; has a radium finish)
- \_\_\_ 182. 6 3/8" Millersburg Holly Sprig I.C. Shaped Bowl – Dk. Mari. (super radium finish)
- \_\_\_ 183. Millersburg Holly Whirl (Sprig) Deep 2-Handled Bon Bon – Mari. (radium & nice)
- \_\_\_ 184. Millersburg Holly Whirl (Sprig) Deep 2-Handled Bon Bon – Amethyst (very attractive radium example)



- \_\_\_185. 8 3/8" Millersburg Holly Whirl (Sprig) low 6 Ruffled Bowl – Amethyst (desirable radium example)
- \_\_\_186. 7" Millersburg Holly Sprig 6 Ruffled Crimped Edge Bowl – Amethyst (radium & nice)
- \_\_\_187. Millersburg Holly Sprig Tri-Cornered Handled Nappy – Amethyst (another really nice radium example)
- \_\_\_188. 7 3/4" Millersburg Holly Sprig Deep Round Bowl – Amethyst (radium & very attractive)
- \_\_\_189. 8 3/4" Millersburg Holly Sprig Variant 6 Ruffled Crimped Bowl – Green (radium example; nice)
- \_\_\_190. **10 1/4" MILLERSBURG SEAWEED LG. BOWL W/ 3 IN 1 EDGE – MARI. (VERY SCARCE & DESIRABLE PATTERN; HAS A SATINY FINISH)**
- \_\_\_191. **6" MILLERSBURG "THE GREAT HOUSE OF ISAAC BENESCH & SONS" 6 RUFFLED BOWL – AMETHYST (VERY SCARCE ITEM; SATINY FINISH)**
- \_\_\_192. 6 1/8" Millersburg Peacock at the Urn ind. Ice Cream Bowl – Amethyst (satiny & scarce)
- \_\_\_193. 5 5/8" Millersburg Blackberry Wreath ind. Ice Cream Bowl – Mari. (a nice radium example)
- \_\_\_194. 9 5/8" Millersburg Nesting Swan 6 Ruffled Bowl – Amethyst (radium & very desirable; nice)
- \_\_\_195. **8 1/8" MILLERSBURG TROUT AND FLY ICE CREAM SHAPED BOWL – GREEN (AN EXCELLENT EXAMPLE; REALLY NICE)**
- \_\_\_196. 9" Millersburg Trout and Fly Bowl w/ 3 in 1 Edge – Green (really nice satiny example; nice)
- \_\_\_197. 9 1/4" Millersburg Holly Whirl Lg. 6 Ruffled Bowl – Sorta Horehound (odd base color; light finish)
- \_\_\_198. 10 1/4" Millersburg Rosalind Lg. 6 Ruffled Bowl – Amethyst (scarce & desirable; satiny)
- \_\_\_199. Millersburg Hanging Cherries Sugar lid only – Amethyst
- \_\_\_200. **FENTON HOLLY STEMMED 6 RUFFLED COMPOTE – WHITE (VERY RARE COLOR FOR THIS ITEM; NOT MANY KNOWN)**
- \_\_\_201. Fenton Holly Rose Bowl – Blue (very scarce; nice color)
- \_\_\_202. **FENTON MIRRORED LOTUS ROSE BOWL – MARI. (RARE PATTERN IN THIS SHAPE; NICE COLOR)**
- \_\_\_203. Fenton Horsehead Medallion ftd. Rose Bowl – Dk. Mari. (excellent example)
- \_\_\_204. N Wild Rose Open Edge Rose Bowl – Green (has manuf. check at base pontil)
- \_\_\_205. **US GLASS COSMOS AND CANE GIANT ROSE BOWL – HONEY AMBER (RARE ITEM IN THIS SIZE; NICE COLOR)**
- \_\_\_206. N Beaded Cable ftd. Rose Bowl – White (very scarce; nice & frosty)
- \_\_\_207. N Drapery Rose Bowl – Aqua Opal. (very scarce; has a Butterscotch overlay)
- \_\_\_208. Brockwitz Curved Star (Venetian) Flower Arranger – Mari. (scarce; nice color w/ original metal frog)
- \_\_\_209. N Round Handled Bushel Basket – Lt. Aqua Opal. (Butterscotch overlay; very light opal.)
- \_\_\_210. 9 1/2" Imperial Plain Flared Deep Round Bowl – Purple (super irid.; great color)
- \_\_\_211. Pair Fostoria Squatty Taffeta Lustre Candlesticks – Purple (scarce pair w/ excellent irid.)
- \_\_\_212. Pair 8 3/4" Tall N Spindle Stretch Candlesticks – Celeste Blue (nice color & irid.)
- \_\_\_213. **8" TALL X 7 1/2" TOP DIAM. FENTON STRETCH FLARED VASE – RED (GREAT COLOR AND VERY DESIRABLE)**
- \_\_\_214. 9 1/4" Fenton Holly Bowl w/ 3 in 1 Edge – Blue (nice color & irid.)
- \_\_\_215. **8 1/2" FENTON DRAGON AND LOTUS 8 RUFFLED BOWL – MARI./ MOONSTONE (VERY RARE ITEM; NICE COLOR; TOUGH TO FIND)**
- \_\_\_216. Fenton Persian Medallion Rose Bowl – Green (rare color for this item but has large chip on base)
- \_\_\_217. Fenton Fluffy Peacock Tumbler – Green (silvery irid.)
- \_\_\_218. **FENTON FOOTED ORANGE TREE VARIANT TUMBLER – BLUE (RARE VARIATION; LACKING TOP BAND; AVERAGE IRID.)**
- \_\_\_219. 9 1/2" Tall N Diamond Point Swung Vase – Purple (nice color)
- \_\_\_220. **11 1/2" TALL N THIN RIB STANDARD SWUNG VASE – SAPPHIRE BLUE (RARE & DESIRABLE W/ GREAT COLOR AND IRID.)**
- \_\_\_221. 13 1/2" Tall N Thin Rib Mid-Size Swung Vase – Purple (nice example; very attractive)
- \_\_\_222. 10 1/4" Tall N Four Pillars Ribbed Swung Vase – Aqua Opal. (scarce; nice color & opal.)
- \_\_\_223. 9 1/4" Imperial Cobblestone 8 Ruffled Bowl – Helios Green (scarce pattern)
- \_\_\_224. 8 1/4" Imperial Heavy Grape Flat Plate – Dk. Mari. (nice color)



- \_\_\_ 225. **16 1/2" TALL IMPERIAL MORNING GLORY SWUNG FUNERAL VASE – AMETHYST (VERY RARE ITEM W/ A NICE RADIUM FINISH)**
- \_\_\_ 226. 8 1/2" Westmoreland Carolina Dogwood 6 Ruffled Bowl – Lt. Moonstone/ Mari. (scarce; nice color)
- \_\_\_ 227. 5 3/4" Westmoreland Hobstar Fruit Small 6 Ruffled Bowl – Mari./ Moonstone (scarce; nice example)
- \_\_\_ 228. Westmoreland Leaf Swirl ftd. 6 Ruffled Compote – Teal (nice color)
- \_\_\_ 229. Brockwitz Foot Prisms Vase – Dk. Mari. (scarce; really nice color & irid.)
- \_\_\_ 230. **AUSTRALIAN BUTTERFLY BUSH LG. STEMMED 12 RUFFLED COMPOTE – MARI. (VERY SCARCE & DESIRABLE W/ GREAT IRID.; NICE)**
- \_\_\_ 231. 4 pc. Czech Lot: Decanter, Stopper, (1) Shot Glass and (1) Black based ftd. Tumbler – Mari. (selling as a lot)
- \_\_\_ 232. (1) European ftd. Enameled Cordial and (1) Flared Shot Glass – Mari. (selling 2 for 1)
- \_\_\_ 233. (1) DeVilbiss Perfume w/ Stopper and (1) Geometric Atomizer – Mari. (selling 2 for 1)
- \_\_\_ 234. Inwald Jacobean Ranger Atomizer – Mari. (scarce item w/ nice color)
- \_\_\_ 235. **(MAKER ?) EUROPEAN HEART HANDLED DOUBLE SALT DIP – DK. MARI. (RARE & DESIRABLE; NICE COLOR AND TOUGH)**
- \_\_\_ 236. **(MAKER?) JACOBAN RANGER RING TREE – DK. MARI. (VERY SCARCE W/ NICE COLOR)**
- \_\_\_ 237. **"SHEAFER'S SKRIP WRITING FLUID" 16 OZ. INK BOTTLE – MARI. (VERY UNUSUAL ITEM; NEVER SEEN ANOTHER)**
- \_\_\_ 238. (Maker?) ftd. Salt/ Sherbert w/ Plain Pattern – Dk. Mari. (unusual; haven't seen another)
- \_\_\_ 239. 5 5/8" (Maker?) Flat Plate – Mari. (scarce; nice irid.)
- \_\_\_ 240. **FOSTORIA (MAKER?) "YORK" OR DIAMOND POINT VARIANT LG. ROSE BOWL – DK. MARI. (RARE & UNUSUAL; NEVER SEEN ONE BEFORE; NICE COLOR)**
- \_\_\_ 241. **HOBB'S BLOCK ROSE BOWL – DK. MARI. (UNUSUAL ITEM W/ EXCELLENT COLOR & IRID.)**
- \_\_\_ 242. **DALZELL'S ALEXIS (?) ROSE BOWL – LT. MARI. (ANOTHER UNUSUAL ITEM; HAVEN'T SEEN ANOTHER)**
- \_\_\_ 243. Signed Heisey Colonial Flute Toothpick Holder – Lt. Mari. (scarce item)
- \_\_\_ 244. Czech Random Threading 6 pc. Covered Lemonade Set – Lt. Mari. (scarce set; pitcher is cracked)
- \_\_\_ 245. Australian Banded Diamond Tumbler – Dk. Mari. (scarce; has small chip on base)
- \_\_\_ 246. Fenton Stretch Era Mellon Rib Based Etched Tumbler – Grecian Gold (very scarce item)
- \_\_\_ 247. N Singing Birds Tumbler – Crystal w/ Colored Decoration (unusual crystal item)
- \_\_\_ 248. (1) Fenton Milady Tumbler and (1) Fenton Lattice and Grape Tumbler – Blue (selling 2x the money)
- \_\_\_ 249. Fenton "Spring Festival" Enameled Collar Based Tumbler – Blue (scarce w/ collar base)
- \_\_\_ 250. **N ACORN BURRS 8 PC. RUFFLED PUNCH SET – ICE BLUE (VERY RARE & VERY DESIRABLE; WELL MATCHED & PERFECT)**
- \_\_\_ 251. N Acorn Burrs Tumbler – Dk. Mari. (nice color)
- \_\_\_ 252. N Singing Birds Handled Mug – Green (really nice example)
- \_\_\_ 253. N Singing Birds Handled Mug – Amethyst (nice color & irid.)
- \_\_\_ 254. N Singing Birds Stippled Handled Mug – Dk. Mari. (nice dark color)
- \_\_\_ 255. **9 3/8" N ROSE SHOW FLARED PLATE – DK. MARI. (VERY SCARCE & VERY ATTRACTIVE; NICE)**
- \_\_\_ 256. **8 1/2" N ROSE SHOW 8 RUFFLED BOWL – DK. MARI. (VERY SCARCE W/ NICE COLOR & IRID.; ATTRACTIVE)**
- \_\_\_ 257. **9 1/2" N ROSE SHOW FLARED PLATE – BLUE (SCARCE & DESIRABLE W/ NICE COLOR)**
- \_\_\_ 258. 8 1/2" N Grape and Cable Stippled Bowl w/ PCE and Ribbed Ext. – Purple (large chip on back of point but still a scarce item)
- \_\_\_ 259. 8 1/2" N Grape and Cable Variant Bowl w/ PCE and Basketweave Ext. – Pastel Mari. (super example w/ great color & irid.)
- \_\_\_ 260. **N GRAPE AND CABLE STIPPLED TABLE-SIZE 8 PC. PUNCH SET – DK. MARI. (SUPER EXAMPLE W/ GREAT COLOR & IRID.)**
- \_\_\_ 261. **N GRAPE AND CABLE HANDLED WATER PITCHER – DK. MARI. (REALLY ATTRACTIVE EXAMPLE; GREAT COLOR)**



- \_\_\_262. N Grape and Cable 6 Ruffled Hat Shape – Amethyst (super example; pin head on top rim)
- \_\_\_263. N Peacock at the Fountain Butter lid w/ Damaged Base – Purple (top is good; big chip on base)
- \_\_\_264. 7 3/8" N Fruits and Flowers 6 Ruffled Bowl w/ Basketweave Ext. – Blue (scarce; nice color)
- \_\_\_265. **9" N THREE FRUITS STIPPLED FLARED PLATE W/ RIBBED EXT. – BLUE (VERY SCARCE W/ NICE COLOR & IRID.)**
- \_\_\_266. 9" N Three Fruits Stippled Plate w/ Ribbed Ext. – Purple (scarce; nice color & irid.)
- \_\_\_267. 9" N Three Fruits Stippled Plate w/ Ribbed Ext. – Dk. Mari. (super color & irid.; nice)
- \_\_\_268. 9" N Three Fruits Stippled Plate w/ Ribbed Ext. – Pastel Mari. ( great color & irid.; very nice)
- \_\_\_269. **8 3/4" N THREE FRUITS 8 RUFFLED BOWL W/ BASKETWEAVE EXT. – HOREHOUND (VERY SCARCE BASE COLOR; NICE IRID.)**
- \_\_\_270. **8 3/4" N STRAWBERRY STIPPLED 8 RUFFLED BOWL W/ RIBBED EXT. – DK. MARI. (GREAT COLOR & IRID.; VERY ATTRACTIVE)**
- \_\_\_271. 9" N Strawberry 8 Ruffled Bowl w/ Basketweave Ext. – Green (nice looking item)
- \_\_\_272. 8 3/4" N Strawberry 8 Ruffled Bowl w/ Plain Ext. – Mari. (very nice irid.)
- \_\_\_273. 8 1/2" N Strawberry Bowl w/ PCE and Basketweave Ext. – Purple (nice irid.)
- \_\_\_274. 9" N Strawberry Flared Plate w/ Basketweave Ext. – Amethyst (satiny finish; sorta crooked)
- \_\_\_275. **8 3/4" N GOOD LUCK 8 RUFFLED BOWL W/ RIBBED EXT. – GREEN (REALLY NICE EXAMPLE; ODD GREEN W/ A MARI. OVERLAY)**
- \_\_\_276. 8 3/4" N Good Luck 8 Ruffled Bowl w/ Ribbed Ext. – Dk. Mari. (nice dark color)
- \_\_\_277. 8 3/4" N Good Luck Stippled Bowl w/ PCE and Ribbed Ext. – Blue (very scarce; has gold highlights)
- \_\_\_278. 8 3/4" N Good Luck Bowl w/ PCE and Ribbed Ext. – Dk. Mari. (really nice color & irid.)
- \_\_\_279. 11 1/4" Tall N Four Pillars Standard-Size Swung Vase – Aqua Opal. (scarce w/ nice opal.)
- \_\_\_280. 10 1/2" Tall N Leaf Columns Swung Vase – Lt. Amethyst (scarce color; really nice)
- \_\_\_281. 11 5/8" Tall N Diamond Point Swung Vase w/ 6 Points – Green (great color & irid.)
- \_\_\_282. 6 1/4" Tall N Thin Rib Flared Vase – Green (nice size; nice item)
- \_\_\_283. 7 1/2" Tall N Thin Rib Flared Vase – Mari. (nice color)
- \_\_\_284. Cambridge Inverted Feather Covered Cracker Jar – Green (scarce; nice color)
- \_\_\_285. **WESTMORELAND DAISY SQUARES STEMMED CRIMPED 2-SIDED COMPOTE – LIME GREEN/ MARI. (RARE & DESIRABLE; NICE COLOR & SHAPE)**
- \_\_\_286. (Maker?, Pattern?) European Handled Basket and (1) Imperial Grape Flat Plate – Mari. (selling 2 for 1)
- \_\_\_287. Imperial Tulip and Cane Stemmed Goblet – Mari. (scarce)
- \_\_\_288. Imperial Tulip and Cane Stemmed Claret – Mari. (scarce)
- \_\_\_289. **IMPERIAL OCTAGON STEMMED CORDIAL – MARI. (VERY SCARCE & DESIRABLE SIZE; NICE)**
- \_\_\_290. **17 3/4" TALL X 5 1/8" BASE FENTON RUSTIC SWUNG FUNERAL VASE – PASTEL MARI. (ABSOLUTELY SUPER ITEM; EXCELLENT EXAMPLE)**
- \_\_\_291. 6 1/2" Tall Fenton Rustic "Sweet Pea" Swung Vase – White (scarce size & color)
- \_\_\_292. **8" FENTON PEACOCK AND GRAPE SPATULA FTD. 8 RUFFLED BOWL – LIME GREEN OPAL. (VERY SCARCE; NICE COLOR & OPAL.)**
- \_\_\_293. 7 3/4" Fenton Peacock and Grape Spatula ftd. 8 Ruffled Bowl – P. Opal. (another nice item w/ great irid.)
- \_\_\_294. 7 3/4" Fenton Horsehead Medallion low 6 Ruffled Bowl – Blue (scarce; nice detail)
- \_\_\_295. **9 1/2" FENTON PEACOCK AT THE URN FLARED PLATE – BLUE (VERY SCARCE; NICE COLOR & IRID.)**
- \_\_\_296. 9 1/4" Fenton Peacock at the Urn Flared Plate – White (frosty; scarce w/ nice irid.)
- \_\_\_297. 9 1/4" Fenton Peacock at the Urn Flared Plate – Dk. Mari. (nice color & irid.; scarce)
- \_\_\_298. 9 1/2" Fenton Orange Tree w/ Trunk Plate – White (great irid.; very nice)
- \_\_\_299. 8 1/2" Fenton Holly I.C. Shaped Bowl – White (another item w/ great irid.)
- \_\_\_300. **7" TALL FENTON IDYLL FLARED VASE – MARI. (EXTREMELY RARE PATTERN; ONE OF THE BETTER EXAMPLES I'VE SEEN)**



- \_\_\_ 301. **FENTON MIKADO LG. STEMMED ICE CREAM SHAPED COMPOTE – MARI. (GREAT SHAPE W/ BEAUTIFUL IRID.)**
- \_\_\_ 302. 7 5/8" Fenton Dragon and Lotus Spatula ftd. Ice Cream Shaped Bowl – Green (very attractive item; nice)
- \_\_\_ 303. 8 3/4" Fenton Dragon and Lotus 8 Ruffled Bowl – Green (really nice color & irid.)
- \_\_\_ 304. 8 3/8" Fenton Dragon and Lotus Ice Cream Shaped Bowl – Amber (scarce base color)
- \_\_\_ 305. **10 1/4" FENTON TWO FLOWERS LG. BALL FTD. I.C. SHAPED BOWL – LIME GREEN/ MARI. (RARE BASE COLOR; REALLY NICE EXAMPLE)**
- \_\_\_ 306. (1) 6" Fenton Little Fishes ftd. 6 Ruffled Sauce and (1) 7" Fenton Lions 6 Ruffled Bowl – Mari. (selling 2 for 1; nice items)
- \_\_\_ 307. (1) 7" Fenton Peacock Tail 6 Ruffled Bowl w/ Horlacher Adv. and (1) 8 3/4" Fenton Peacock Tail Flared Master Berry Bowl – Amethyst (selling 2 for 1; nice advertising item)
- \_\_\_ 308. 9" Fenton Ribbon Tie low Bowl w/ 3 in 1 Edge – Blue (nice color & irid.)
- \_\_\_ 309. 8" Fenton Chrysanthemum 8 Ruffled Spatula ftd. Bowl – Powder Blue/ Mari. (odd base color; nice satiny finish)
- \_\_\_ 310. **7 1/2" FENTON GRAPE AND CABLE LOW 8 RUFFLED BOWL – RED (RARE & DESIRABLE; NICE SATINY FINISH)**
- \_\_\_ 311. Fenton Grape and Cable ftd. Ruffled Fruit Bowl w/ Persian Medallion Int. – Blue (scarce w/ nice color; odd interior finish)
- \_\_\_ 312. (1) Fenton Captive Rose 2-Handled 4-Sided Bon Bon and (1) 9" Fenton Holly 8 Ruffled Bowl – Green (selling 2 for 1; nice colors)
- \_\_\_ 313. 7 1/2" Fenton Vintage Grape Flat Plate – Green (great satiny irid.; very nice)
- \_\_\_ 314. 7 1/2" Fenton Vintage Grape Flat Plate – Amethyst (sorta radium finish; nice irid.)
- \_\_\_ 315. (1) Fenton Orange Tree Handled Shaving Mug – Blue, (1) Dugan Beaded Shell Handled Mug – Dk. Mari. and (1) Dugan Fisherman's Handled Mug – Purple (3 nice examples; selling 3 for 1)
- \_\_\_ 316. 8 1/2" Dugan Round Up Flared Plate – Dk. P. Opal. (really nice color & opal.; nice example)
- \_\_\_ 317. 7" Dugan Fishscale Flat Plate – Mari. (nice irid.)
- \_\_\_ 318. 7" Dugan Holly Whirl low 10 Ruffled Bowl – Purple (odd shape; nice irid.)
- \_\_\_ 319. 6 3/8" Dugan Cherries low 8 Ruffled Bowl/ Plate – Purple (scarce; nice irid.)
- \_\_\_ 320. 10 1/2" Dugan Cosmos Variant Flat Chop Plate – Mari. (scarce & really flat)
- \_\_\_ 321. 6" Dugan Cherries Flared Crimped Edge Plate – Dk. P. Opal. (really nice example)
- \_\_\_ 322. 6 1/8" Dugan Four Flowers Flat Plate – Dk. P. Opal. (nice opal & irid.)
- \_\_\_ 323. 7 5/8" Dugan Six Petals 6 Ruffled Bowl – Sun Colored Lavender (odd base color; nice)
- \_\_\_ 324. 8 3/4" Singleton Bailey Farmyard low I.C. Shaped Bowl – Irid. Lavender Opal. (great example)
- \_\_\_ 325. **22 1/2" TALL X 5 1/8" BASE FENTON RUSTIC SWUNG FUNERAL VASE – DK. MARI. (TALL W/ GREAT COLOR & IRID.; REALLY NICE)**
- \_\_\_ 326. 10" Fenton Two Flowers ball ftd. 8 Ruffled Bowl – Blue (nice color & irid.)
- \_\_\_ 327. 8" Fenton Dragon and Lotus I.C. Shaped Bowl – Amber (not iridized on the interior; unusual)
- \_\_\_ 328. 7 1/4" Fenton Holly Deep Round "Nut" Bowl – Blue (scarce shape; nice)
- \_\_\_ 329. **9 5/8" FENTON HOLLY FLAT PLATE – BLUE (REALLY NICE EXAMPLE)**
- \_\_\_ 330. **9" FENTON PLAID 8 RUFFLED BOWL – BLUE (VERY SCARCE; NICE COLOR & IRID.)**
- \_\_\_ 331. **8 1/2" FENTON CONCORD GRAPE BOWL W/ 3 IN 1 EDGE – AMETHYST (SCARCE PATTERN; NICE IRID.)**
- \_\_\_ 332. 7 1/2" Fenton Dragon and Lotus Spatula ftd. 8 Ruffled Bowl – P. Opal. (nice opal & irid.)
- \_\_\_ 333. **7 1/2" FENTON HOLLY DEEP ROUND "NUT" BOWL – LIME GREEN/ VASELINE (VERY SCARCE BASE COLOR FOR THIS SHAPE)**
- \_\_\_ 334. **FENTON 2 ROW OPEN EDGE BASKETWEAVE JIP HAT – RED (NICE COLOR & SHAPE)**
- \_\_\_ 335. Fenton Holly 6 Ruffled Hat – Amethyst Opal. (very scarce; tough to find; a bit spotty on inside)
- \_\_\_ 336. Fenton Blackberry Spray 6 Ruffled Hat – Red/ Amberina (scarce; odd tint)
- \_\_\_ 337. Fenton Blackberry Spray JIP Crimped Edge Hat – Amber (scarce color)
- \_\_\_ 338. Fenton Orange Tree ftd. Hatpin Holder – Mari. (nice color)
- \_\_\_ 339. 4 3/8" Fenton Kittens Flat Plate – Mari. (flat and has satiny irid.)



- \_\_\_ 340. **IMPERIAL THUMBPRINT AND OVALS 6 RUFFLED VASE – PURPLE (RARE & VERY DESIRABLE; GREAT COLOR & IRID.)**
- \_\_\_ 341. 8 1/2" Tall x 2 7/8" Base Imperial Ripple Swung Vase – Purple (super irid.; nice)
- \_\_\_ 342. 11 3/4" Tall x 3 3/8" Base Imperial Ripple Swung Vase – Purple (really nice irid.)
- \_\_\_ 343. 8 3/8" Tall x 2 3/8" Base Imperial Ripple Swung Vase – Non-Iridized Blue (very odd item to find; different)
- \_\_\_ 344. Imperial Grape Water Carafe – Purple (nice color & irid.)
- \_\_\_ 345. 8 5/8" Imperial Grape 8 Ruffled Bowl – Amethyst (nice irid.; scarce)
- \_\_\_ 346. 12 1/4" Tall x 4" Base Imperial Ripple Mid-Size Swung Vase – Olive Green (odd tint)
- \_\_\_ 347. **12 1/2" TALL IMPERIAL BEADED BULLSEYE SWUNG VASE – GREEN**
- \_\_\_ 348. **10" TALL IMPERIAL ART GLASS LEAD LUSTRE VASE – GREY/ MARI. INTERIOR (VERY DESIRABLE W/ NICE IRID.)**
- \_\_\_ 349. 7" Tall Imperial Art Glass Lead Lustre Vase – Cobalt Blue (another desirable item w/ great irid.)
- \_\_\_ 350. **10" IMPERIAL ACANTHUS FLAT PLATE – SMOKE (VERY SCARCE W/ EXCELLENT IRID.)**
- \_\_\_ 351. 8 3/4" Imperial Hattie 8 Ruffled Bowl – Smoke (super irid.)
- \_\_\_ 352. 10 3/4" Tall Imperial Freefold Swung Vase – Smoke (nice irid.; scarce)
- \_\_\_ 353. **2" X 4" IMPERIAL JEWELS MINI ROSE BOWL SIGNED IRON CROSS – PURPLE (WHATTA CUTIE; GREAT COLOR & SIZE)**
- \_\_\_ 354. **BROCKWITZ ROSE GARDEN LG. ROSE BOWL – BLUE (RARE & VERY DESIRABLE; GREAT COLOR & IRID.)**
- \_\_\_ 355. **11" TALL DUGAN BIG BASKETWEAVE SWUNG VASE – ICE BLUE (RARE COLOR; VERY DESIRABLE W/ NICE IRID.)**
- \_\_\_ 356. 9 1/2" Dugan Cherries Lg. 6 Ruffled Bowl – Purple (scarce; nice color & irid.)
- \_\_\_ 357. Dugan Holly Whirl Tri-Cornered One Handled Nappy – Purple (nice irid.)
- \_\_\_ 358. N Peach Tumbler – Elec. Blue (super color & irid.; scarce)
- \_\_\_ 359. **N ORIENTAL POPPY TUMBLER – ICE GREEN (RARE & DESIRABLE; TOUGH TO FIND)**
- \_\_\_ 360. **13 1/2" TALL N TREE TRUNK MID-SIZE SWUNG VASE – GREEN (VERY SCARCE W/ A REALLY NICE SATINY FINISH)**
- \_\_\_ 361. **12 1/2" TALL N TREE TRUNK MID-SIZE SWUNG VASE – AMETHYST (VERY SCARCE W/ A NICE SATINY FINISH)**
- \_\_\_ 362. **5 1/4" N PEACOCK AT THE URN IND. ICE CREAM BOWL – ICE GREEN (VERY SCARCE IF YOU NEED ONE; NICE IRID.)**
- \_\_\_ 363. N Grape and Cable Small Pin Tray – Green (very scarce w/ a nice satiny finish)
- \_\_\_ 364. N Grape and Cable Lg. Oval Dresser Tray – Purple (scarce w/ really nice irid.)
- \_\_\_ 365. **N FRUITS AND FLOWERS STEMMED HANDLED BON BON – AQUA OPAL. (ATTRACTIVE ITEM W/ NICE OPAL AND OVERLAY)**
- \_\_\_ 366. 9" N Peacocks Plate w/ Ribbed Ext. – Ice Green (scarce w/ nice irid.)
- \_\_\_ 367. 8 5/8" N Peacocks 8 Ruffled Bowl w/ Ribbed Ext. – Purple (really nice irid.; has some manuf. issues)
- \_\_\_ 368. **9" N PEACOCKS STIPPLED PLATE W/ NARROW BASE AND RIBBED EXT. – MARI. (VERY SCARCE W/ REALLY NICE IRID.)**
- \_\_\_ 369. 9" N Grape and Cable Variant Plate w/ Basketweave Ext. – Purple (great irid.; really nice item)
- \_\_\_ 370. **9" N EMBROIDERED MUMS 8 RUFFLED BOWL W/ PLAIN EXT. – ICE BLUE (VERY DESIRABLE; AVERAGE IRID. – REALLY NICE)**
- \_\_\_ 371. N Poppy Oval Ruffled Relish Tray w/ Ribbed Ext. – Elec. Blue (really bright irid.)
- \_\_\_ 372. N Grape and Cable ftd. Hatpin Holder – Green (scarce; nice satiny finish)
- \_\_\_ 373. N Grape and Cable Stippled 2-Handled 4-Sided Bon Bon – Green (great example w/ nice irid.)
- \_\_\_ 374. N Three Fruits domed 8 Ruffled Bowl – Green (bright color; really nice irid.)
- \_\_\_ 375. 1983 HOACGA Handled Loving Cup – Mari./ Custard (nice item)







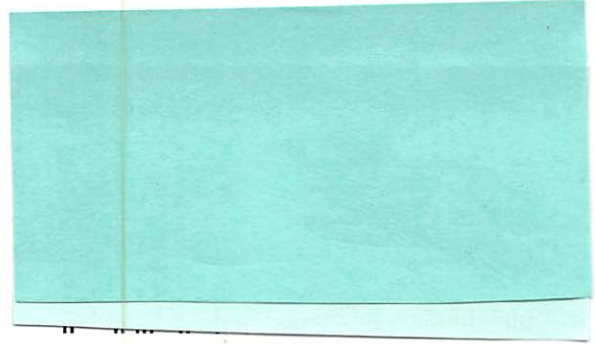
183 Sunnyside Drive  
Clermont Florida 34711  
Phone (407) 592•6552 or (503) 756•2629



First Class  
US POSTAGE  
PAID  
MILLERSBURG  
OH  
PERMIT #13

FOR ALL PHOTOS AND LISTING  
TOMBURNSAUCTIONS.COM

LIVE INTERNET BIDDING IS AVAILABLE FOR  
THIS AUCTION VIA AUCTION FLEX-HIBID

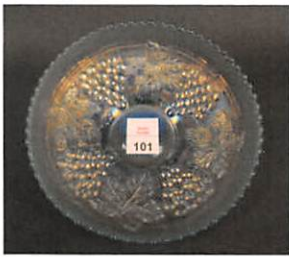


Lot 135



Lot 340

**MID ATLANTIC CARNIVAL GLASS JAMBOREE AUCTION**  
**SATURDAY OCTOBER 20TH 2018**



Lot 101



Lot 106



Lot 107



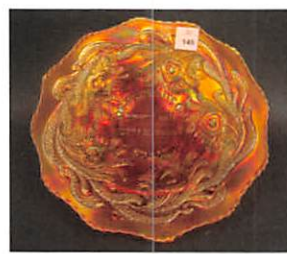
Lot 102



Lot 125



Lot 115



Lot 145



Lot 20



Lot 180



Lot 30



Lot 310



Lot 170