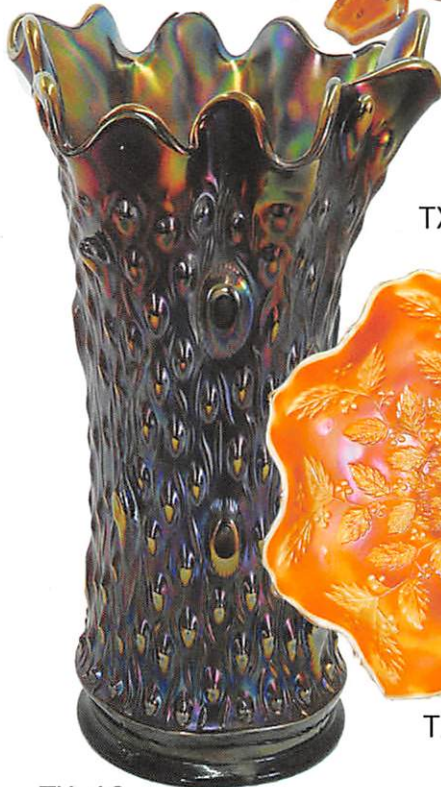


So. California Carnival
Glass Club Convention
Saturday, March 10 9:30 a.m.



Carnival Glass 2018 Auctions

Texas Carnival
Glass Club Convention
Saturday, March 24 9:30 a.m.
Open to the Public



Seeck Auctions
Jim & Jan Seeck
641-424-1116



Southern California Carnival Glass Club Convention

Jim & Jan Seeck

Saturday, March 10, 2018 — 9:30 A.M.

641-424-1116

Azure Hotel & Suites 1945 E. Holt Blvd.

Ontario, California 91764

Ray & RayAnn Hitchcock Collection

Texas Carnival Glass Club Convention

Saturday, March 24, 2018 — 9:30 A.M.

Wyndham Dallas Suites- Park Central

7800 Alpha Road Dallas, Texas 75240

Open to the Public **Previews: Friday Evenings**

◆◆◆ **ABSENTEE and LIVE BIDDING is available on-line** ◆◆◆

through Auction Flex at: www.seeckauction.com

NO BUYER'S PREMIUM -- EMAIL: jimjan@seeckauction.com

Lodging

March 10 Auction: If staying at the hotel, call direct (Press 0) for room reservations: 909-390-7778. Cutoff date for rate is Feb 22nd, 2018. **San Diego / Southern Calif. Convention info:** Contact Jeff Adams at 661-718-3831 or jeffnadine@msn.com
Club Website: www.socalcarnivalglassclub.com

March 24 Auction: If staying at the Hotel, Call the hotel directly at 972-233-7600 (option 2) to make your reservation. Let them know you are with the Texas Carnival Glass Club - March 2018. Group code is: 03146822CG **Texas Club Convention info:** Contact President Emmett Morgan at: 979-836-7896 .Club Website: www.texascarnivalglass.org

Terms: Cash or Check, VISA, MasterCard and Discover accepted w/proper ID. **4% Clerking Fee** on all purchases made using credit cards. Announcements made day of sale take precedence over any printed information.

** Sales Tax will be charged, please bring your tax-exempt numbers.

ABSENTEE BIDDING OPTIONS

- 1) **Call us by phone at:** (641) 424-1116
- 2) **Prebid: Enter your bids from our website into our online catalog through the Auction Flex system.**
 - *An exciting advantage of entering your bids online yourself, is the option to be notified by email if you are outbid on an item. You will know when you are outbid on an item and you can increase your bid on that item or bid on something else.*
- 3) **Live Phone Bidding: Is available on pieces with an estimated sale price of \$500 or more.**
If you would like to participate in live phone bidding, contact us by the **Thursday before the auction.**
- 4) **Real-time Bidding: Bid live during the auction through Auction Flex live webcast bidding.**

There is a \$7 handling charge for each successful bid. Shipping and insurance charges are additional.

Bidders will be notified by phone/email if their bid(s) are successful. This will be done 1 - 3 days after the auction.

BID INCREMENTS:

\$1 - \$100/\$5	\$100 - \$200/\$10	\$200 - \$700/\$25	\$700 - \$1,500/\$50
\$1,500 - \$3,000/\$100	\$3,000 - \$5,000/\$250	\$5000+ Auctioneer's Discretion	

◆◆◆ Saturday, March 10 ◆◆◆

- ___ 1. Vintage 7" plate - green - pretty
- ___ 2. Vintage 7" plate - blue - a beauty
- ___ 3. Holly & Berry hddd nappy - peach opal
- ___ 4. Flute ftd salt - marigold - not sure I have seen this one before
- ___ 5. Smooth Rays ruffled compote - marigold on milk glass
- ___ 6. **Butterfly ornament - marigold - very scarce, a collector's favorite**
- ___ 7. Louisa rose bowl - green
- ___ 8. **Stag & Holly chop plate - marigold - dark & fantastic, one of the nicest ones!**
- ___ 9. N's Peacock at Urn IC sauce - purple - nice
- ___ 10. N's Peacock at Urn IC sauce - marigold - dark, pretty
- ___ 11. **Shell & Sand 9" plate - purple - very pretty plate, quite rare**
- ___ 12. Shell & Sand 9" plate - green - scarce
- ___ 13. Leaf & Beads rose bowl - aqua opal
- ___ 14. Leaf & Beads rose bowl - green - pretty
- ___ 15. Leaf & Beads rose bowl - blue - nice
- ___ 16. Leaf & Beads rose bowl - purple
- ___ 17. Leaf & Beads rose bowl - marigold - nice
- ___ 18. Leaf & Beads rose bowl - blue opal - not Carnival Glass
- ___ 19. **Hearts & Flowers 9" plate w/ribbed back - ice blue - very scarce & desirable, nice**
- ___ 20. **Hearts & Flowers 9" plate w/ribbed back - green - scarce color, nice**
- ___ 21. **Hearts & Flowers 9" plate w/ribbed back - purple - super pretty for these**
- ___ 22. **Hearts & Flowers 9" plate w/ribbed back - marigold - very pretty**
- ___ 23. **Luster Rose ruffled fruit bowl - purple - a beauty, scarce color**
- ___ 24. Daisy & Drape flared out vase - aqua opal - scarce
- ___ 25. Footed Prism Panels vase - marigold
- ___ 26. **Acorn Burrs 8 pc. punch set - green - rare set & highly desirable, a nice set**
- ___ 27. **Acorn Burrs 8 pc. punch set - marigold - also very nice**
- ___ 28. N's Eight Sided Bushel Basket - white
- ___ 29. **Peacocks 9" plate w/ribbed back - green - very pretty**
- ___ 30. Peacocks 9" plate w/ribbed back - purple
- ___ 31. Peacocks 9" plate w/ribbed back - ice green - nice
- ___ 32. Peacocks 9" plate w/ribbed back - marigold - pretty
- ___ 33. **Beaded Cable rose bowl - ice blue - scarce color**
- ___ 34. Beaded Cable rose bowl - aqua opal - nice, tiny pinpoint on toe
- ___ 35. Beaded Cable rose bowl - marigold - has rayed interior
- ___ 36. **Sterling Furniture Co. advertising ruffled bowl - amethyst - California advertising!**
- ___ 37. Orange Tree 9" plate - blue - very pretty
- ___ 38. Orange Tree w/trunk 9" plate - marigold - dark, nice
- ___ 39. Orange Tree 9" plate - light marigold - many may call this clambroth
- ___ 40. Fluffy Peacock 7 pc. water set - amethyst - nice matching set
- ___ 41. **Little Flowers 10" chop plate - marigold - very rare plate, very nice for these, has light irid. spot near edge**
- ___ 42. Orange Tree loving cup - amethyst - very minor nick on corner of base
- ___ 43. Orange Tree loving cup - marigold - nice
- ___ 44. Wishbone 10" ruffled bowl - marigold - very pretty
- ___ 45. **Captive Rose 9" plate - green - pretty, scarce**
- ___ 46. Captive Rose 9" plate - amethyst - nice for these
- ___ 47. Captive Rose 9" plate - blue - fantastic irid.!
- ___ 48. Captive Rose 9" plate - marigold - nice
- ___ 49. **Wreath of Roses 5 pc. round punch set w/Persian Medallion interior - amethyst - scarce, nice**
- ___ 50. **Wreath of Roses 8 pc. round punch set w/Persian Medallion interior - blue - scarce color, nice**
- ___ 51. Lions IC shaped bowl - marigold
- ___ 52. **Open Rose 9" plate - purple - scarce, very pretty**
- ___ 53. Open Rose 9" plate - amber - very tiny pinpoint on rose, pretty
- ___ 54. Paneled Dandelion 7 pc. tankard water set - green - scarce, nice
- ___ 55. Windflower hddd nappy - marigold - pretty
- ___ 56. Ten Mums 10" ruffled bowl - amethyst - very pretty
- ___ 57. Ten Mums 10" ruffled bowl - green - nice
- ___ 58. Ten Mums 10" ruffled bowl - blue - nice
- ___ 59. Ten Mums 10" ruffled bowl - marigold - nice
- ___ 60. Concave Diamond 7 pc. lidded water set - celeste blue - nice set
- ___ 61. **Rose Show Variant 9" plate - marigold - roughness & wear on petals, scarce**
- ___ 62. Fine Cut & Roses rose bowl - ice blue - dark, nice
- ___ 63. Fine Cut & Roses rose bowl - green - pretty
- ___ 64. Fine Cut & Roses rose bowl - marigold - nice
- ___ 65. **Utah Liquor Co. advertising 6" plate - amethyst - nice example, very scarce**
- ___ 66. Holly 9" plate - amethyst - nice
- ___ 67. Holly 9" plate - green - pretty
- ___ 68. Holly 9" plate - black amethyst - rare to find this color in a plate
- ___ 69. Holly 9" plate - blue - very pretty
- ___ 70. Holly 9" plate - white - minor nick on base
- ___ 71. Holly 9" plate - marigold - dark
- ___ 72. Holly 9" plate - marigold - lighter color, super pretty
- ___ 73. Holly 9" plate - light marigold - many would call it clambroth
- ___ 73a. **M'burg Strawberry Wreath 6 1/2" square shaped bowl - vaseline - rare whimsy shape in a rare color! Great piece!**
- ___ 74. **Peacock at the Fountain ruffled fruit bowl - purple - scarce, very nice**
- ___ 75. Pinched Swirl rose bowl - peach opal
- ___ 76. **Good Luck 9" plate w/BW back - green - very pretty for these**
- ___ 77. Good Luck 9" plate w/BW back - marigold - nice
- ___ 78. Peacock at the Fountain 7 pc. water set - blue - scarce set, 1 tumbler has nick on base
- ___ 79. Three Row Open Edge ruffled bowl - white - scarce
- ___ 80. Waterlily ftd ruffled sauce - lime green
- ___ 81. **Wreath of Roses 7 pc. round shape punch set w/ Vintage interior - amethyst - super pretty**
- ___ 82. **Wreath of Roses round punch bowl & base w/ Vintage interior - marigold - large polished chips on base of bowl**
- ___ 83. Stag & Holly lg ftd IC shaped bowl - blue
- ___ 84. M'burg Nesting Swan ruffled bowl - marigold - radium, nice
- ___ 85. **Poinsettia & Lattice ftd ruffled bowl - blue - nice**
- ___ 86. Garland rose bowl - marigold
- ___ 87. **Acorn Burrs 7 pc. water set - purple - nice set, 1 tumbler has chip**
- ___ 88. **Acorn Burrs 7 pc. water set - marigold - another nice set**
- ___ 89. Grape & Cable sweetmeat - purple - very pretty example, very tiny nick on inner rim of base
- ___ 90. Peacocks ruffled bowl w/ribbed back - blue - very pretty, electric highlights
- ___ 91. Waterlily lg size ftd IC shaped bowl - marigold
- ___ 92. Open Rose 9" ruffled bowl - purple
- ___ 93. **Grape & Cable banana boat - ice blue - very pretty example, very scarce**

- ___ 94. Grape & Cable banana boat - purple - nice
- ___ 95. **Panther ftd centerpiece bowl - marigold - always in demand, nice**
- ___ 96. Honeycomb & Beads crimped edge 6" plate - purple
- ___ 97. **Oriental Poppy 7 pc. tankard water set - purple - always in demand**
- ___ 98. **Oriental Poppy 7 pc. tankard water set - marigold - pretty set**
- ___ 99. Vintage fernery - green
- ___ 100. Vintage fernery - marigold
- ___ 101. Fenton Rib Optic water pitcher w/lid - celeste blue w/cobalt handle, Stretch Glass
- ___ 102. **Peacock at the Fountain 8 pc. punch set - marigold - very nice set**
- ___ 103. Grape & Cable whiskey decanter - purple - very minor roughness where stopper fits in
- ___ 104. Persian Medallion bonbon - lime green
- ___ 105. **N's Peacock at Urn master IC bowl - ice green - scarce & highly desirable**
- ___ 106. **N's Peacock at Urn master IC bowl - ice blue - super pretty example, manufacture sharp point on edge**
- ___ 107. N's Peacock at Urn master IC bowl - purple - very nice
- ___ 108. N's Peacock at Urn master IC bowl - marigold - nice
- ___ 109. Daisy & Plume rose bowl w/Rayed interior - green
- ___ 110. Daisy & Plume rose bowl w/Rayed interior - marigold
- ___ 111. **Apple Blossom Twigs 9" plate w/smooth edge - purple - scarce, nice**
- ___ 112. Apple Blossom Twigs 9" plate w/smooth edge - peach opal - missing irid. on petal of flower
- ___ 113. **Wishbone water pitcher w/1 tumbler - purple - highly desirable & nice, slight peeling on lip**
- ___ 114. Kittens 2 sides up dish - marigold
- ___ 115. Kittens 4 sides up dish - marigold
- ___ 116. **Rose Show 9" plate - emerald green - very rare piece, nicks on rose & tiny nick on edge**
- ___ 117. **Rose Show 9" plate - blue - scarce**
- ___ 118. Rose Show 9" plate - marigold - nice
- ___ 119. Rose Show 9" plate - white - very pretty
- ___ 120. Good Luck ruffled bowl w/ribbed back - blue - electric highlights
- ___ 121. **Enameled Forget Me Not 7 pc. tankard water set - marigold - very scarce set, nice, one tumbler has burst on top edge**
- ___ 122. Inverted Feather cracker jar - green
- ___ 123. Fenton's Peacock at Urn 9" plate - marigold - nice
- ___ 124. Persian Medallion rose bowl - blue - super pretty
- ___ 125. Persian Medallion rose bowl - marigold
- ___ 126. **M'burg 1911 Campbell & Beesley Co. advertising handgrip plate - amethyst - rare piece**
- ___ 127. Dugan Cherries ruffled bowl - purple
- ___ 128. **Two Flowers ftd chop plate - marigold - very scarce, nice**
- ___ 129. Wreathed Cherry 7 pc. banana boat shaped berry set - white - scarce set
- ___ 130. Two Flowers ftd IC shaped master berry bowl - blue
- ___ 131. Orange Tree 10 pc. round punch set - marigold
- ___ 132. **Concord 3 in 1 edge bowl - green - very pretty**
- ___ 133. Nippon 9" plate w/BW back - marigold - very scarce plate, nice
- ___ 134. Grape & Cable 7 pc. water set - purple
- ___ 135. Florentine #349 10 1/2" candlesticks - marigold
- ___ 136. **Scroll Embossed 9" plate - purple - pretty w/green irid.**
- ___ 137. Scroll Embossed 9" plate - aqua - scarce color
- ___ 138. Scroll Embossed 9" plate - marigold
- ___ 139. Stretch Glass Fenton #200 guest set bottom - celeste blue - no tumbler
- ___ 140. Peacock at Urn ruffled compote - marigold - dark
- ___ 141. Embroidered Mums ruffled bowl w/ribbed back - blue
- ___ 142. **Spector's Department Store / Heart & Vine 9" plate - marigold - scarce, very nice example**
- ___ 143. Three Fruits 9" plate w/plain back - purple - pretty
- ___ 144. Stag & Holly giant rose bowl - marigold - very nice, tiny nick on collar base
- ___ 145. **Dandelion 6 pc. tankard water set - purple**
- ___ 146. Four Flowers Variant 9" plate - green - very pretty
- ___ 147. **Rustic 17 1/2" funeral vase - marigold - dark, nice**
- ___ 148. Ten Mums 3 in 1 edge bowl - amethyst
- ___ 149. Peacock & Grape 9" plate - marigold - very nice
- ___ 150. Wreath of Roses 8 pc. ruffled punch set w/Persian Medallion interior - green - super nice set
- ___ 151. N's Bushel Basket - ice green
- ___ 152. Floral & Grape 7 pc. water set - amethyst - pretty set
- ___ 153. Persian Medallion hair receiver - marigold
- ___ 154. Grape & Cable sweetmeat - purple
- ___ 155. Three Row 7" plate AND 6" IC bowl - marigold
- ___ 156. **Leaf Chain 9" plate - blue - scarce**
- ___ 157. N's Peacock at Urn IC sauce - marigold
- ___ 158. N's Peacock at the Fountain punch bowl base - purple
- ___ 159. Cherry Chain chop plate - light marigold - some may call clambroth
- ___ 160. Lot of 3 pieces - blue Stretch is perfume that has been polished down
- ___ 161. Many Fruits 11 pc. round punch set - marigold
- ___ 162. Lot of 4 tumblers - all amethyst
- ___ 163. **Dreibus Parfait Sweets advertising plate - very nice plate, some may call lavender**
- ___ 164. Dugan Heavy Grape 10 1/2" ruffled bowl - purple - very scarce bowl & highly desired
- ___ 165. Three Fruits 9" plate w/plain back - marigold - nice
- ___ 166. Grape & Cable cracker jar - purple - nice
- ___ 167. Horse Medallion ftd rose bowl - marigold
- ___ 168. **Fanciful 9" plate - purple - nice**
- ___ 169. Fanciful 9" plate - white - nice
- ___ 170. **Stippled Strawberry 9" plate w/ribbed back - scarce plate, nice**
- ___ 171. Lot of 7 Imperial Grape water goblets - marigold
- ___ 172. **Peacock at the Fountain 7 pc. berry set - blue - pretty set, one of the sauces is purple**
- ___ 173. Bouquet water pitcher & 1 tumbler - marigold
- ___ 174. Apple Blossom Twigs 9" plate - blue
- ___ 175. Apple Blossom Twigs 9" plate - marigold
- ___ 176. **Wishbone epergne - purple - scarce & desirable**
- ___ 177. Buzz Saw lg size cruet - marigold - no stopper
- ___ 178. **Peacock at the Fountain 4 pc. table set - purple - super pretty set!**
- ___ 179. Acanthus chop plate - marigold
- ___ 180. Drapery rose bowl - aqua opal - butterscotch
- ___ 181. Imperial Grape wine bottle - purple
- ___ 182. **Eat Paradise Sodas advertising plate - amethyst - nice**
- ___ 183. Stippled Three Fruits ruffled bowl w/ribbed back - blue opal - not Carnival Glass
- ___ 184. Strawberry 9" plate w/plain back - purple - pretty
- ___ 185. Grape & Cable 8 pc. punch set - marigold - nice
- ___ 186. Peacock & Grape ruffled bowl - green
- ___ 187. Stippled Grape & Cable humidior - marigold - always in demand
- ___ 188. **Shell 9" plate - smoke - nice one**
- ___ 189. Blackberry Spray JIP CRE hat - marigold
- ___ 190. Tree Trunk 12 1/2" midsize vase - purple
- ___ 191. Wide Panel 14 1/2" chop plate - marigold
- ___ 192. **Embroidered Mums 9" plate w/ribbed back - ice green - very scarce plate & nice**
- ___ 193. Grape & Cable 7 pc. berry set - purple
- ___ 194. Pair of Enameled tumblers - marigold
- ___ 195. Stippled Three Fruits 9" plate w/ribbed back - blue

- ___ 196. **Singing Birds 7 pc. water set - green - scarce & desirable, nice**
- ___ 197. Rose Show ruffled bowl - blue opal - not Carnival Glass
- ___ 198. **Holly ruffled bowl - marigold on moonstone - super pretty & rare bowl**
- ___ 199. **Apple Tree water pitcher - marigold - dark & beautiful! Outstanding pitcher!**
- ___ 200. **Stippled & Banded Grape & Cable banana boat - blue - rare piece**
- ___ 201. Hearts & Flowers ruffled compote - blue opal - not Carnival Glass
- ___ 202. **Hattie chop plate - marigold - very pretty plate & quite scarce**
- ___ 203. Lot of 3 pieces - all blue opal - not Carnival Glass

- ___ 204. Ten Mums tumbler - blue
- ___ 205. **Blackberry Open Edge 7" plate - marigold - super example of this rare plate!**
- ___ 205a. Leaf & Beads rose bowl - aqua opal - butterscotch, nice
- ___ 206. **Poppy Show 9" plate - green - very rare plate & nice, has nick on base**
- ___ 207. **Poppy Show 9" plate - blue - another very pretty plate, minor nick on base**
- ___ 208. **Poppy Show 9" plate - marigold - pinpoint on poppy**
- ___ 209. **Butterfly ornament - marigold - super nice, hard to believe two in one auction!**

Lots 210 to 251 - only available for viewing online.

SEEK AUCTIONS
P.O. BOX 377
MASON CITY, IA 50401



**2018 CARNIVAL
GLASS AUCTIONS**

ONTARIO, CAL.
MARCH 10
DALLAS, TEXAS
MARCH 24

PRESORTED
FIRST CLASS MAIL
US POSTAGE
PAID
MAIL EXPEDITORS

