

- _____ 1. M-Water Lily 9 3/4" footed bowl
- _____ 2. **B-Fenton Thistle 8 3/4" bowl, pretty**
- _____ 3. G-Fenton Thistle 9" bowl
- _____ 4. **A-Fenton Chrysanthemum/Windmill 9" collar base bowl, scarce color**
- _____ 5. M-Oxbow mugs, 4 times \$
- _____ 6. **M-Fenton Chrysanthemum/Windmill 9" collar base bowl**
- _____ 7. M-Two Flowers 9" ICS, footed bowl
- _____ 8. **P-Fenton Ribbon Tie 9", 3 in 1 bowl, scarce and nice**
- _____ 9. M-Fenton ribbon Tie 9", 3 in 1 bowl, interesting finish
- _____ 10. **G-Fenton Stippled Rays 9", 3 in 1 bowl**
- _____ 11. A-Fenton Vintage (Grape) 9" bowl
- _____ 12. **Astonishing P-Imp Scroll Embossed 5 1/2" bowl, File exterior, even for this pattern this piece has exceptional color**
- _____ 13. Scarce Smoke-Imp Chesterfield 7" candlesticks, pair, not often seen
- _____ 14. **M-Fenton Holly 9", 3 in 1 edge bowl**
- _____ 15. P-Peacock and Grape 8 3/4" bowl, silver satin finish
- _____ 16. **Rich M-Stag and Holly 11" low, low ICS footed bowl, chop plate size**
- _____ 17. A-Stag and Holly 8", ICS, spat ftd bowl, uncommon color
- _____ 18. **Vivid G-Stag and Holly 8", spat ftd bowl**
- _____ 19. P-N Acorn Burrs tumbler, superb
- _____ 20. **G-N Acorn Burrs tumblers, 2 times \$, very pretty**
- _____ 21. Super Pumpkin M-Imp Grape tumbler
- _____ 22. **Elec B-N Peacock at Fountain tumblers, 2 times \$**
- _____ 23. G-N Singing Birds tumbler, radium and nice
- _____ 24. **B-Beaded Stork in Rushes tumblers, 3 times \$, all pretty**
- _____ 25. M-Floral and Grape tumblers, 3 times \$
- _____ 26. **P-N Raspberry tumbler**
- _____ 27. M-Windmill tumblers, 4 times \$
- _____ 28. **Deep P-Dugan Wreathed Cherry tumbler**
- _____ 29. G-Fenton Orange Tree wine glass, rare
- _____ 30. **M-Fenton Orange Tree wine glass, colorful**
- _____ 31. M-Fenton Orange Tree Variant wine glasses, 2 times \$, scarce
- _____ 32. **Pretty M-Fenton Sailboats wine glasses, 2 times \$**
- _____ 33. M-Fenton Sailboats water goblets, 2 times \$
- _____ 34. **B-Fenton Sailboats wine glasses, 2 times \$, not often seen**
- _____ 35. M-Persian Medallion hair receiver, nice
- _____ 36. **Blinding Blue-Persian Medallion rosebowl, prize piece for color!**
- _____ 37. A-Fenton Diamond and Rib 11 1/2" vases, 2 times \$
- _____ 38. **B-Fenton Diamond and Rib 10" vase, silver iridescence**
- _____ 39. Lovely A-Fenton Diamond and Rib 10 1/4" vase, tulip top
- _____ 40. **G-April Showers 11 1/4" vase, nine tips on top**
- _____ 41. G-April Showers 11" vase, six tips on top
- _____ 42. **G-April Showers 10" vase, nine tips on top**
- _____ 43. G-N Tree Trunk Vt. 7 1/2" squatty vase
- _____ 44. **G-Westmoreland Corinth 8 3/4" JIP vase, neat shape**
- _____ 45. Dark M-N Thin Rib 10" vase
- _____ 46. **PO-Target 12" vase, excellent example**
- _____ 47. Electric P-Imp Ripple 12 1/2" vase, 10" front height, nice look
- _____ 48. **P-Imp Ripple 11 1/2" vase, electric highlights**
- _____ 49. Radium M-Imp Ripple 11" vase
- _____ 50. **G-Imp Ripple 7" vase, scarce color and size**
- _____ 51. M-Imp Mini Morning Glory 6" vase, pretty pinks
- _____ 52. **Deep P-Fenton Diamond Point Columns 13 1/2" mid-size vase, marked Fenton**
- _____ 53. M-Imp Curled Rib 7 1/2" JIP vase
- _____ 54. **W-N Corn vase, frosty with plain base**
- _____ 55. W-Imp Octagon 6 1/4" vase, marked IG
- _____ 56. **B-Fenton Paneled Diamond and Bows 7 1/4" vase**
- _____ 57. G-Fenton Long Thumbprint 9 3/4" vase, 2 times \$
- _____ 58. **Killer M-Imp Mini Morning Glory 5 1/2" vase, wow!**
- _____ 59. Smoke-Imp Mini Morning Glory 6 1/4" vase, nice
- _____ 60. **Electric P-Imp Thin Rib and Drape 6 1/4" vase, top shelf piece**
- _____ 61. Smoke-Imp Grape 9 1/2" deep, round bowl, pastels on interior
- _____ 62. **Smoke-Imp Diamond Ring 9 1/2" bowl, very pretty**
- _____ 63. M-Imp Windmill 5 1/4" bowl, a little sweetie
- _____ 64. **Vibrant M-Imp Windmill 7 3/4", round, flared bowl**
- _____ 65. M-Imp Grape 7" deep, round bowl
- _____ 66. **M-Imp Lustre Rose butter dish and lid, fab-u-lous!**
- _____ 67. M-Imp Optic Flute 8" bowl, loaded with color
- _____ 68. **M-Imp Frosted Block 8 3/4" square plate, stunning iridescence**
- _____ 69. Dark M-Imp Star and File 6 1/2" bonbon
- _____ 70. **Magnificent P-Imp Star of David 9" bowl, no upgrade needed here**
- _____ 71. M-Imp Twins 6" bowl
- _____ 72. **M-Imp Star and File two handled oval relish dish**
- _____ 73. Imp Rococo 4 1/2" vase, clear graduating to radium marigold top
- _____ 74. **Amber-Imp Open Rose 5 1/2" rosebowl, blue and purple center**
- _____ 75. M-Imp Pansy pickle dish
- _____ 76. **Unreal Clambroth-Imp Pansy relish dish, find one prettier**
- _____ 77. Vivid M-Imp Windmill dresser tray, outstanding color
- _____ 78. **Superb Smoke-Imp Pansy 9 1/4" low ruffled bowl, finest kind**
- _____ 79. Stunning Lav-Imp Pansy 9 1/2" low ruffled bowl, killer example
- _____ 80. **M-Imp Open rose 9" plate, nice for these**
- _____ 81. M-Jeanette Tree Bark 5 pc water set, with extremely scarce lid to pitcher!
- _____ 82. **PO-Raindrops 9" bowl, above average example**
- _____ 83. PO-Fishscale and Beads 6 3/4" bowl
- _____ 84. **PO-Folding Fan crimped edge 6 1/2" compote, nice**
- _____ 85. PO-Dugan Smooth Rays/Jeweled Heart 6" tri-corner plate, tough
- _____ 86. **PO-Dugan Fan gravy boat, lovely inside and out**
- _____ 87. PO-Four Flowers 6 1/4" plate, exquisite color
- _____ 88. **PO-Ski Star 8", tri-corner, crimped edge bowl, unusual shape**
- _____ 89. Scarce Deep Aqua-Fenton Panther 5 1/2" bowl, beautiful and much rarer than red
- _____ 90. **Rich M-Panther 5 1/2" bowls, 2 times \$**
- _____ 91. M-Panther 6" bowl
- _____ 92. **G-Fenton Sailboats 6" bowl, a seldom seen color in this pattern**
- _____ 93. M-Fenton Sailboats 6" bowl
- _____ 94. **A-Fenton Sailboats 6" bowl, another unusual color**
- _____ 95. A-Little Flowers 5 1/4" round, flared bowl, exceptional color for this pattern
- _____ 96. **G-Little Flowers 5 1/4" round, flared bowl, ditto on the color**
- _____ 97. B-Fenton Peacock Tail 6 3/4" square hat
- _____ 98. **G-Fenton Peacock Tail 6" hat, General Furniture 1910 advertising on base**
- _____ 99. M-Iris and Herringbone 6" plate, pretty
- _____ 100. **Scorching M-Inwald Fleur-De-Lis 6 1/4" square plate, very scarce**
- _____ 101. B-Persian Medallion 6" bowl
- _____ 102. **B-Blackberry Open Edge 6 1/2" basket, nice**
- _____ 103. M-Fenton Two Row Open Edge 6", 2 sides up basket, Miller's Market Furniture advertising in center
- _____ 104. **Radium M-Fenton Two Row Open Edge 6 1/4", 2 sides up basket, Feldman Bros. Furniture advertising in center, splendid color**
- _____ 105. M-Fenton Two Row Open Edge 6", 2 sides up basket, Miller's Market Furniture advertising in center
- _____ 106. **M-Blackberry Open Edge 6 3/4" basket**
- _____ 107. Amber-Fenton Blackberry Spray 6" hat, pretty
- _____ 108. **M-Fenton Little Fishes 6", footed bowl, tough item to find**
- _____ 109. B-Fenton 2 Row, Open Edge 5 3/4", JIP hat, excellent color
- _____ 110. **Cherry Red-Fenton 2 Row, Open Edge 6 1/4", JIP hat**

- _____ 111. Vaseline-Fenton Stippled Rays breakfast sugar, rare and beautiful
- _____ 112. **M-Waterlily and Cattails 3" whimsey vase, dark and nice**
- _____ 113. M-Blackberry Spray 6" hat, pretty
- _____ 114. **M-Wreath of Roses rosebowl, this is a Dugan piece**
- _____ 115. M-Leaf Chain 6 ¾" ICS bowl
- _____ 116. **G-Fenton Lotus and Grape Vt. 6 ¼", round, flared, footed bowl**
- _____ 117. M-Two Flowers 6" footed bowl
- _____ 118. **M-Waterlily and Cattails 2 ¾" whimsey vase**
- _____ 119. B-Fenton Vintage (Grape) 6 ¾" ICS bowl
- _____ 120. **M-Westmoreland Shell 6 ¾" soap dish**
- _____ 121. M-European 7" rosebowl, pattern?—see photo
- _____ 122. **Incredible B-Fenton Thistle banana boat**
- _____ 123. M-Fenton Thistle banana boat, equally gorgeous
- _____ 124. **P-N Grape and Cable 11" fruit bowl, collector favorite**
- _____ 125. Electric P-Imp Heavy Grape 10" bowl, super, super
- _____ 126. **G-Vintage fernery, scarce and beautiful**
- _____ 127. AO-N Leaf and Beads rosebowl
- _____ 128. **Pumpkin M-N Beaded Cable rosebowl, tremendous example**
- _____ 129. M-Imp Octagon goblets, 5 times \$
- _____ 130. **B-Fenton Peacock Tail 6" hat, octagonal base**
- _____ 131. M-Fenton Peacock Tail 6" hat, round base, pretty
- _____ 132. **Scarce A-Kittens 4 ¼", six ruffle bowl**
- _____ 133. M-Kittens card tray shape 4 ¾" plate, just two sets of kittens
- _____ 134. **M-Kittens 4 ¾" square or 4 sides up plate**
- _____ 135. M-Kittens 4 ½" plate
- _____ 136. **W-Dugan Wreathed Cherry 6" sauce bowl**
- _____ 137. M-Imp Mini Morning Glory 6" stick vase
- _____ 138. **M-Fisherman's mug, nice**
- _____ 139. P-Fenton Butterflies card tray bonbon, bright
- _____ 140. **P-N Butterfly bonbon, plain back, pretty**
- _____ 141. Lime G Vas-Fenton Holly compote
- _____ 142. **Lav-Fenton Holly compote**
- _____ 143. Aqua-Fenton Holly compote
- _____ 144. **M-Fenton Holly crimped edge compote**
- _____ 145. Vas stretch-Fenton 7 pc. nut bowl set, super set
- _____ 146. **Astonishing M-N round Bushel basket**
- _____ 147. M-N Three Fruits dome footed nut bowl, different!
- _____ 148. **Horehound-N Three Fruits 9" bowl, BW back, scarce color and nice**
- _____ 149. W-Dugan Fanciful 9 ¼" low ruffled bowl, exquisite pastels
- _____ 150. **W-Fenton Holly 8 ¾" ICS bowl, blues and purples**
- _____ 151. P-N Grape and Cable cologne bottle with stopper
- _____ 152. **M-N Grape and Cable candlelamp, complete and scarce**
- _____ 153. Great G-N Grape and Cable candlesticks, 2 times \$
- _____ 154. **P-N Grape and Cable sweetmeat compote with lid, outstanding**
- _____ 155. Electric P-Imp Grape decanter with stopper
- _____ 156. **Exquisite electric P-Imp Grape carafe**
- _____ 157. M-Dragon and Lotus 8 ¼" ICS bowl, the start of a run of colorful Dragon and Lotus bowls
- _____ 158. **Radium G-Dragon and Lotus 8" ICS bowl, iridized on reverse only**
- _____ 159. Cobalt B-Dragon and Lotus 8 ½" ICS bowl, super nice
- _____ 160. **Gorgeous Amber-Dragon and Lotus 9" bowl**
- _____ 161. Light P-Dragon and Lotus 9" bowl
- _____ 162. **Lavender-Dragon and Lotus 9" bowl, lovely iridescence**
- _____ 163. Vas-Dragon and Lotus 9 ¼" bowl, beautiful interior
- _____ 164. **Cobalt B-Dragon and Lotus 8" ICS bowl, attractive**
- _____ 165. Deep G-Dragon and Lotus 8" spat ftd bowl
- _____ 166. **P-Dragon and Lotus 9" bowl, golden interior**
- _____ 167. Odd Green-Dragon and Lotus 9" bowl, glows faintly
- _____ 168. **M-Brooklyn Bridge 9" bowl, radium gem**
- _____ 169. M-Dugan Cherries 8 ½" footed bowl
- _____ 170. **P-Dugan Persian Garden 10" fruit bowl top, radium and nice**
- _____ 171. M-Dugan Pony 8 ½" bowl, radium
- _____ 172. **B-Dugan Roundup 9", deep 3 in 1 crimp, amazing radium finish**
- _____ 173. M-Heavy Vine 6" tumbler, see photo
- _____ 174. **M-Australian Magpie 10" bowl, radium finish**
- _____ 175. P-Dugan Grapevine Lattice 6 ¾" low ruffled bowl
- _____ 176. **W-Dugan Grapevine Lattice 6 ¾" low ruffled bowl, sweet**
- _____ 177. W-Persian Garden 6" ICS bowl
- _____ 178. **P-Dugan Fishnet epergne, very nice and seldom offered**
- _____ 179. BA-Dugan Fisherman's mug, silver finish
- _____ 180. **BA-Dugan Wreathed Cherry banana bowl, quite pretty**
- _____ 181. B-Dugan Grape Delight rosebowl, perfect feet
- _____ 182. **P-Dugan Grape Delight rosebowl, perfect feet**
- _____ 183. W-Dugan Fanciful 9 ¾" low ruffled bowl, outstanding
- _____ 184. **W-Dugan Fanciful 8" ICS bowl, rainbow of pastel hues**
- _____ 185. B-Royal Luster 8" candlestick, scarce
- _____ 186. **Smoke-Imp Double Scroll 3 piece console set, delightful**
- _____ 187. M-Premium 8 ½" candlesticks, pair
- _____ 188. **Smoke-Premium 8 ½" candlesticks, pair, great**
- _____ 189. G-Imp Fieldflower water pitcher
- _____ 190. **G-Imp Fieldflower tumbler**
- _____ 191. B-Butterfly and Berry tumblers, 6 times \$
- _____ 192. **Deep P-Dugan Wreathed Cherry 7 pc water set**
- _____ 193. P-Dahlia water pitcher, scarce pattern
- _____ 194. **B-N Grape and Gothic Arches 7 pc water set**
- _____ 195. P-N Singing Birds 7 pc water set, nice one
- _____ 196. **Electric P-Imp Windmill milk pitcher, luscious color**
- _____ 197. Smoke-Imp Poinsettia milk pitcher, another beauty
- _____ 198. **Teal-Imp 474 milk pitcher, and it glows**
- _____ 199. M-Butterfly and Berry water pitcher, well above average for these
- _____ 200. **Scarce P-N Grape and Cable tankard water pitcher**
- _____ 201. P-N Grape and Cable tankard tumblers, 2 times \$
- _____ 202. **M-N Grape and Cable tankard tumbler, nice**
- _____ 203. M-Fenton Apple Tree water pitcher, a beauty
- _____ 204. **M-N Thin Rib 14" mid-size vase, good color on upper half**
- _____ 205. M-N Thin Rib 12 ½" mid-size vase, superb coloration
- _____ 206. **P-Dugan Target 12 ½" vase, great color**
- _____ 207. M-N Fine Rib 10 ½" vase, sensational pastels
- _____ 208. **Scarce Powder B-Fenton Knotted Beads 9 ½" vase with crimped top, something special**
- _____ 209. B-N Daisy and Drape vase, very scarce in blue
- _____ 210. **Blue Opal-N Drapery 7 ¼" vase, unreal color**
- _____ 211. Ice G-N Drapery 8 ¼" vase, loaded with color
- _____ 212. **Lime G-N Corn vase, stalk base**
- _____ 213. W-N Corn vase, stalk base
- _____ 214. **W-N Corn vase, plain base**
- _____ 215. W-N Daisy and Drape, blush of color
- _____ 216. **G-N Diamond Point 10 ½" square top vase, excellent color**
- _____ 217. P-N Diamond Point 12" vase, top half is sizzling electric blue
- _____ 218. **P-N Tree Trunk 11" vase, color top to bottom**
- _____ 219. P-N Tree Trunk 10" vase
- _____ 220. **P-N Thin Rib 11 ¼" vase, superb**
- _____ 221. B-Fenton Fine Rib 10" vase
- _____ 222. Red Amberina-Fenton Fine Rib 9" vase
- _____ 223. M-Fenton Fine Rib 16" mid-size vase
- _____ 224. B-Fenton Bullseye and Beads 12 ¼" vase
- _____ 225. B-Fenton Rustic 9 ¾" vase
- _____ 226. M-N Wishbone epergne, highly desirable and pretty
- _____ 227. Radium P-N Strawberry 9" plate, extremely nice
- _____ 228. **W-N Hearts and Flowers compote**
- _____ 229. Powder Blue Opal-N Hearts and Flowers compote, outstanding
- _____ 230. **B-N Peacocks 9 ¼" plate, electric all the way**
- _____ 231. Deep A-N Peacocks 9 ¼" plate, unusual but attractive iridescence
- _____ 232. **Pastel M-N stippled Peacocks 9 ¼" plate, very nice**

- _____ 233. P-N Three Fruits Medallion spat ftd bowl, beguiling colors
- _____ **234. Ice B-N Hearts and Flowers 9" bowl, top notch color**
- _____ 235. G-N Strawberry 9" bowl
- _____ **236. M-N Strawberry 8 ½" bowl, rainbow pastels**
- _____ 237. P-N Strawberry 8 ½" bowl, purple iridescence
- _____ **238. P-N Grape and Cable 8 ¾" plate, lots of green iridescence**
- _____ 239. P-N Grape and Cable 9" plate, electric hues
- _____ **240. A-N Grape and Cable 9" plate, pretty center**
- _____ 241. M-N Three Fruits bowl
- _____ **242. M-Kittens cup and saucer, radium**
- _____ 243. Dark M-Kittens cup and saucer
- _____ **244. M-Kittens 2 ½" vase, what color on this little gem!**
- _____ 245. M Flash-Devilbiss 6" perfume atomizer
- _____ **246. Lav w/ Black enamel decoration-6 ½" perfume atomizer**
- _____ 247. M Flash-Devilbriss 7" perfume atomizer
- _____ **248. M-Wild Berry powder box with lid, extremely scarce**
- _____ 249. Marigold on Moonstone-N #38 Luna lamp shade, a great find
- _____ **250. M-Fenton fan vase with sterling overlay, 5 ¾" tall, unusual**
- _____ 251. A-N Smooth Rays 8" bowl
- _____ **252. A-N Star of David and Bows 7" nut bowl, seldom encountered shape**
- _____ 253. B-N stippled Grape and Cable Vt. PCE bowl, scarce and nice
- _____ **254. Emerald G-N Grape and Cable 9" plate**
- _____ 255. Exceptional M-N Peacocks 9" bowl, super colorful birds
- _____ **256. M-N Peacocks 9" plate, another winner**
- _____ 257. Smoke-N Peacocks 9 ¼" plate, wonderful color and iridescence
- _____ **258. W-Fenton Leaf Chain 9 ½" plate, as good as these get**
- _____ 259. W-N Rose Show 9 ¼" plate, nice pastels
- _____ **260. W-Fenton Orange Tree 9 ½" plate, yellows and blues**
- _____ 261. Clambroth-Fenton Holly 9 ½" plate
- _____ **262. Clambroth-Fenton Orange Tree 9 ¼" plate, trunk center**
- _____ 263. Clear base-Fenton Orange Tree 8" ICS bowl, just a blush of color and silvery iridescence
- _____ **264. W-N Grape and Cable 10 ½" ICS master bowl**
- _____ 265. W-Fenton Pond Lily card tray bonbon, tough item
- _____ **266. G-Fenton Peacock Tail card tray bonbon**
- _____ 267. B-Fenton Butterflies square bonbon
- _____ **268. G-Fenton Birds and Cherries card tray bonbon**
- _____ 269. G-N Paneled Holly two sides up bonbon
- _____ 270. M-Fenton Two Fruits divided bonbon
- _____ 271. A-Fenton Captive Rose card tray bonbon
- _____ **272. M-N Butterfly bonbon, plain back, pastel iridescence**
- _____ 273. M-Fenton Birds and Cherries compote, dark and nice
- _____ **274. B-Fenton Birds and Cherries compote**
- _____ 275. M-Fenton Sailboats whimsied compote from goblet
- _____ **276. M-Fenton Sailboats whimsied compote from goblet, both scarce**

WATCH:  **Web Site: www.AWK-SHN.com**

277. M-Fenton Orange Tree compote whimsied from wine glass
278. **Cobalt B-Fenton Orange tree bell shape compote whimsied from wine glass**
279. M-Fenton Peacock at Urn compote
280. **G-Fenton Blackberry Bramble compote**
281. Deep A-N Wild Rose nut bowl, rayed interior
282. **M-Fenton Vintage (Grape) 7 pc berry set, well matched**
283. M-N Grape and Gothic Arches butter dish with lid, superb
284. **M-N Grape and Gothic Arches creamer, sweet**
285. M-N Grape and Gothic Arches sugar with lid, superb
286. **M-N Grape and Gothic Arches spooner, these would make a great set—buy them all!!**
287. Killer M-N Peacock at Fountain butter dish with lid
288. **Pumpkin M-N Peacock at Fountain spooner**
289. Superb-N Peacock at Fountain sugar with lid
290. **Rare Powder B-Fenton Flowers rosebowl**
291. Powder B-Fenton Horse Medallion rosebowl, equally scarce
292. **Powder B-Fenton Lions 6 ¼" round, flared bowl, scarce and has a great pressing**
293. Powder B-Fenton Little Flowers 5 ¾" ICS bowl, seldom seen in powder blue
294. **Powder B-Fenton Lotus and Grape Vt. 6" footed sauce**
295. Powder B-Fenton Leaf Chain 8 ¾" bowl, very scarce
296. **M-Fenton Lions 6 ¾" ICS bowl, very nice**
297. Radium M-Fenton Horse Medallion 7 ½" plate, one of the better ones
298. **M-Fenton Lions 6 ½" round, flared bowl**
299. A-Mlbg Blackberry Wreath 7 ½" bowl, satin finish
300. **M-Mlbg Big Fish 8 ½", 3 in 1 bowl, radium, with excellent color**
301. G-Mlbg Cosmos 5 ½" ICS bowl
302. **G-Mlbg Nesting Swan 10" bowl, satin finish**
303. G-Mlbg Holly Whirl card tray bonbon
304. **Dark M-Mlbg Swirled Hobnail cuspidor**
305. P-N Stippled Rays 8 ¾" bowl
306. **P-N Stippled Rays 9" bowl**
307. P-N Stippled Rays 9 ¾" PCE bowl, pretty
308. **M-N Stippled Rays 9 ½" PCE bowl**
309. G-Fenton Vintage (Grape) 6 ¾" bowl
310. **P-N Grape Leaves 9" bowl**
311. Stunning M-N stippled Good Luck bowl, sizzling pinks
312. **Pastel M-N Good Luck 8 ½" bowl, totally different treatment, but beautiful**
313. G-N Good Luck Vt. 9" plate, very stretchy iridescence
314. **P-N Good Luck 8 ½" bowl, plain back, multi electric**
315. Rare B-Fenton Butterfly and Berry giant rosebowl, exceptionally rare and gorgeous
316. **Super M-Fenton Butterfly and Berry 9 ½" master berry bowl**
317. M-Peacock and Grape 8 ½" bowl
318. **Radium M-Peacock and Grape 7 ¾" nut bowl, wow!**
319. M-Peacock and Grape 9 ½" plate, not often seen this nice
320. **W-Fenton Leaf Chain 9 ½" plate, purples and golds**
321. A-Fenton Leaf Chain 9 ½" plate, super in all respects and so scarce
322. **M-Stag and Holly giant rosebowl, nice**
323. B-Stag and Holly 9" fruit bowl, dazzling color
324. **Pumpkin M-Stag and Holly 10 ½" fruit bowl**
325. M-Stag and Holly 10 ¼" ICS bowl, a show stopper
326. **W-N Rose Show 9 ¼" plate**
327. Dark M-N Rose Show 8 ¾" bowl
328. **M-N Poinsettia and Lattice 8 ½" bowl, loaded with pinks**
329. M-Fenton Coral 8 ¾" bowl, heat flash at rim
330. **M-Fenton Dragon and Strawberry 9" ICS, ftd bowl, exceptional**
331. A-Fenton Vintage (Grape) 6" tri-corner plate
332. **Lav-Fenton Acorn 7 ½" bowl, lush marigold overlay**
333. G-Imp Heavy Grape 8" plate

334. **M-Dugan Windflower spade shape sauce boat**
335. G-N Greek Key dome footed 8 ½" bowl, plain interior
336. **P-N Raspberry gravy boat, pretty**
337. P-N Grape and Cable stemmed sherbet
338. **Superb M-Fenton Orange Tree hatpin holder, lovely and has a totally flattened top**
339. P-N Grape and Cable hatpin holder, clean feet
340. **A-Fenton Concord 9" plate, a monster for color, certainly the best I've seen**
341. Dark A-Fenton Holly 8 ¼" ICS bowl, really pretty
342. **M-Fenton Holly 9", 3 in 1 edge bowl**
343. A-Fenton Vintage (Grape) 8 ½" bowl, simply beautiful
344. **A-Persian Medallion 8 ¼", 3 in 1 bowl, love the edge treatment!**
345. B-Fenton Captive Rose 8" CRE bowl, very scarce shape for this pattern
346. **G-Fenton Vintage (Grape) 8" CRE bowl**
347. M-Fenton Vintage (Grape) 8" CRE bowl, needless to say, these are scarce shapes
348. **M-Fenton Sailboats wine glasses, 4 times \$**
349. B-Fenton Orange Tree standard mug
350. **Yellow Amber-Fenton Orange Tree standard mug, scarce color**
351. B-Fenton Orange Tree shaving mug
352. **M-Fenton Orange Tree standard mug**
353. P-N Singing Birds mug
354. **P-Dugan Fisherman's mug**
355. M-Little Bo Peep mug
356. **G-Fenton Iris goblet shape compote, nice!**
357. M-Fenton Iris goblet shape compote
358. **Superb B-N Poppy pickle dish, pure eye candy!**
359. B-N fully stippled Peacock at Urn 5 ½" ICS bowl
360. **W-N Peacock at Urn 5 ½" ICS bowls, 3 times \$**
361. B-Fenton Garland rosebowl
362. **G-Imp Shell and Sand 7 ½" bowl**
363. M-N Grape and Gothic Arches tumbler
364. **M-Imp Windmill tumbler, radium**
365. P-N Singing Birds tumbler
366. **B-Fenton Christmas square whimsey, CRE compote, contemporary with COA**
367. Red-Fenton Christmas ruffled whimsey CRE compote, contemporary with COA
368. **Red-Fenton Christmas compote, flattened top, contemporary with COA**
369. Sapphire-Fenton Christmas compote, flattened top, contemporary, no COA
370. **B-Fenton Christmas Compote, flattened top, contemporary with COA**
371. Vas Opal-Fenton Christmas compote, flattened top, contemporary with COA
372. **Green Opal-Fenton Christmas compote, flattened top, contemporary with COA**
373. Sapphire B-Fenton Christmas compote, flattened top, not iridized, contemporary
374. **Red-Imp Fieldflower pitcher, marked IG**

Numbers 375 to 407 are lots of vintage carnival glass, contemporary carnival glass and club pieces. The auction concludes with ten boxed lots of carnival glass—great buying opportunities exist in these boxed lots. Thank you for attending and/or participating in this auction.

 **Call Today To Sell Your Fine Items**

660-882-5292 Day _____ 660-882-5283 Evening

1 Mile North of I-70 on Hwy. 5, Exit 101

CARNIVAL GLASS

SATURDAY - APRIL 2

Preview Friday April 1, 2016 - 12:00 Noon
at The Mickey Reichel Auction

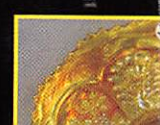
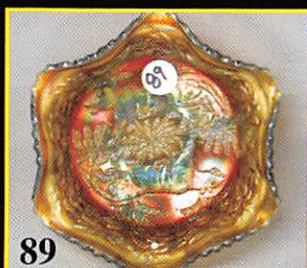
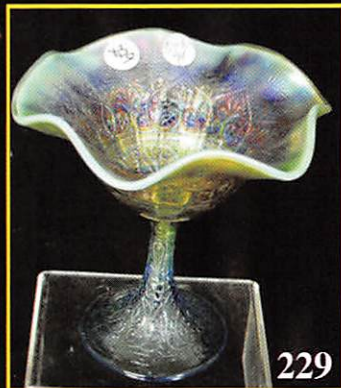
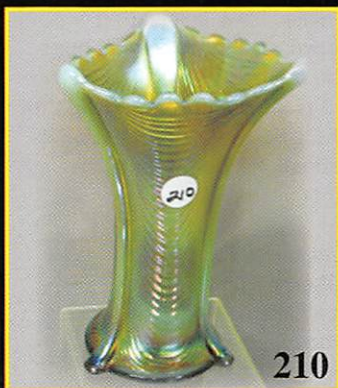
Fantastic selection Of Color Damage Free items
we had the pleasure of selling glass that was so
sale contains. Even relatively common pieces ex
of pieces that are as fine as we have seen for the
then you won't want to miss this auction!

MICKEY REICHEL AUCTION

cell 660-537-5200 m

Free color photo tour W

Plan Now



ESTATE AUCTION

April 02, 2016 at 9:00 am

10:00 am til 5:00 pm in BOONVILLE, MO,
Antique Gallery, 1440 Ashley Rd.

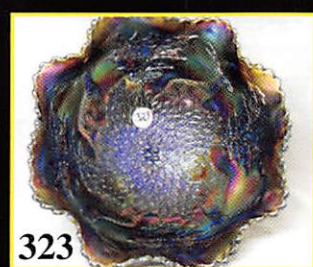
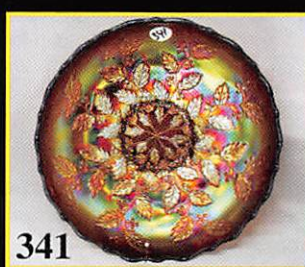
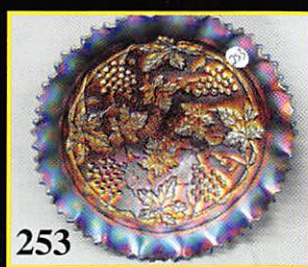
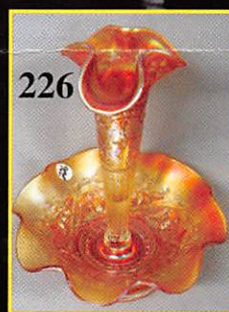
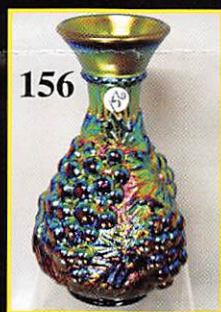
Clean and ready for Display Case - Rarely have
been carefully selected for color by the owners as this
collection exhibits above average color and there are a number
of patterns. If "iridescence is (indeed!) the essence,"
Eugene E. Dusing Estate of Rockford IL.

ANTIQUE & AUCTION

reichel@awk-shn.com

www.awk-shn.com

To Attend

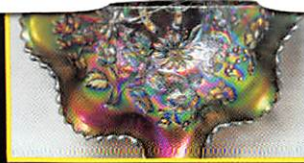




78



172



316



319



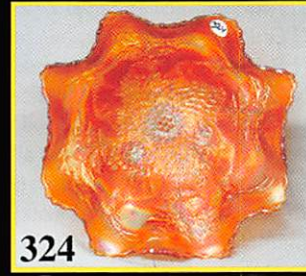
108



255



79



324



311



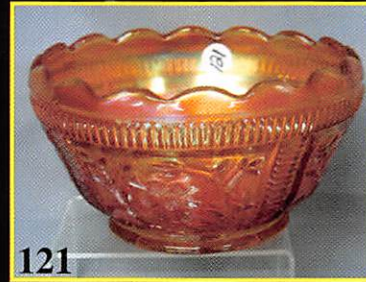
358



76



249



121



283



122



290



291



36



371



195



196



200



22

Make Reservations **EARLY** at one of these local motels:

Days Inn: 660-882-8624

Comfort Inn: 660-882-5317

Super 8: 660-882-2900

Holiday Inn: 660-882-6882

Boonville has Heritage Days and Class Reunions In June

Mickey Reichel Auction Center

1 Mile North of I-70 on Hwy. 5, Exit 101, Boonville, Missouri, 20 Miles West of Columbia, MO on I-70



TERMS: Cash or Good Check, VISA and MasterCard accepted.

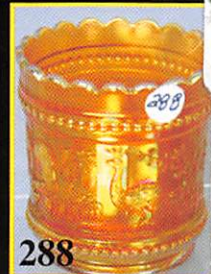


5% Clerking Fee on all purchases except for payment of cash or check.

Proper I.D. required.



152



288

***** No return on any items once t (No Exce**



343



325



16



256



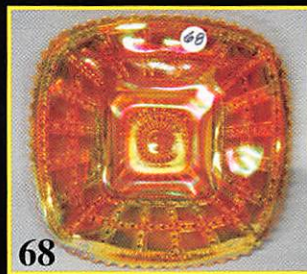
327



322



68



328



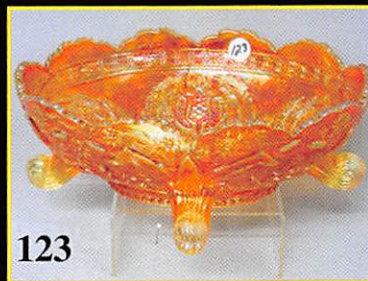
285



287



304



123



36



361



367



366



29



30



245

246

247



186



248

★★★★NO BUYERS PREMIUM★★★★

ABSENTEE BID POLICY:

PLEASE NOTE: There is a \$6 handling charge for each successful bid which will be added to the selling price for all write-in bids. This is in addition to the cost of postage, insurance and packing. Your write-in bid will be entered just as if you are present and bidding. Successful bidders will be notified in 1 to 3 days by the auctioneer (so be sure to include your phone number). Direct mail bids to Auctioneer Mickey Reichel, 18350 Hunters Ridge Ct., Boonville, MO 65233-2971. Terms: Cash or Check accepted with proper I.D. and Social Security Number and References. Announcements made day of the auction supercede all printed material. Not Responsible for Accidents or Sold Items. Call in Bids before Auction Welcome!

Call for additional information: 660-882-5292 days or 660-537-5200 evenings before 9:00 p.m.

FAX: 660-882-5292

(evening hours start FAX transmission after beep)

E-mail: mreichel@AWK-SHN.com

Web Site: www.awk-shn.com

They leave the Auction Center * * * (options)

SEE REVERSE FOR DETAILS