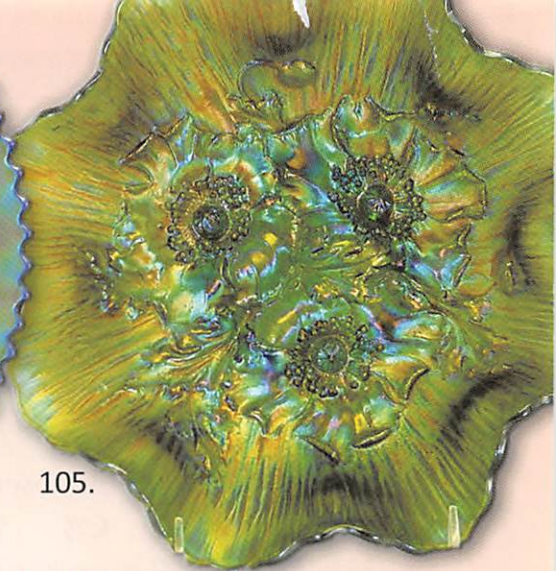




30.



12.



105.

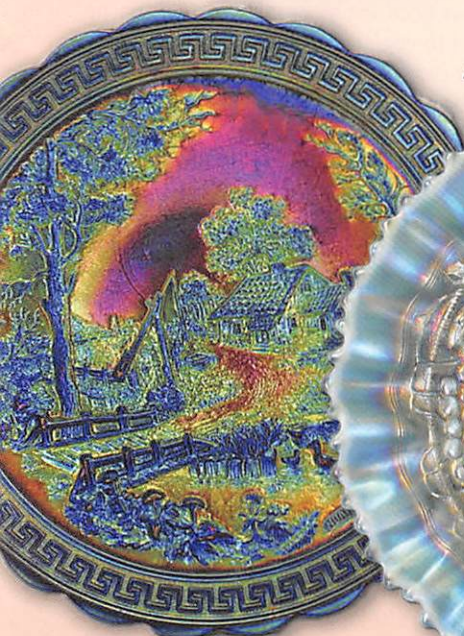
Southern California Carnival  
Glass Club Convention  
Saturday, March 12 9:30 a.m.  
Ontario, California

# Carnival Glass 2016 Auctions

Open  
to the Public

Texas Carnival Glass Club Convention  
Saturday, March 19 9:30 a.m.  
Dallas, Texas

86.



40.



21.

105.



**Seck Auctions**  
Jim & Jan Seck  
641-424-1116



### SATURDAY, MARCH 12, 2016 — 9:30 A.M.

Jim & Jan Seeck

*Ayres Country Suites Hotel 1945 E. Holt Blvd.  
Ontario, California 91764*

641-424-1116

★ Online absentee bidding closes, Friday, March 11 at 9 pm CST

☞ David Hamilton Estate ☛

### SATURDAY, MARCH 19, 2016 — 9:30 A.M.

*Wyndham Dallas Suites- Park Central  
7800 Alpha Road, Dallas, Texas 75240*

★ Online absentee bidding closes, Friday, March 18 at 9 pm CST

☞ Virgil and Lenna Wiebe Collection ☛

ABSENTEE BIDDING is available on-line through Auction Flex using our online catalog at [www.seeckauction.com](http://www.seeckauction.com)

**NO BUYER'S PREMIUM -- OPEN TO THE PUBLIC -- EMAIL: [jimjan@seeckauction.com](mailto:jimjan@seeckauction.com)**

Lodging for the March 12 California auction

Lodging for the March 19 Texas auction

If staying at the Hotel, call direct for room reservations: 909-390-7778. Cutoff date for reservations is Feb. 18, 2016.

San Diego / Southern Calif. Convention info: Contact Heidi Ritterbush at 805-492-3903 or [hritterbush55@hotmail.com](mailto:hritterbush55@hotmail.com) Club Website: [www.sccgc.webs.com](http://www.sccgc.webs.com)

If staying at the Hotel, call direct for room reservations: 972-233-7600, option 2 and tell them you are with the Texas Carnival Glass Club. For Texas Club Convention info: Contact President Emmett Morgan at: 979-836-7896 Club Website: [www.texas carnival glass.org](http://www.texas carnival glass.org)

Terms: Cash or Check, VISA, MasterCard and Discover accepted w/proper ID. **4% Clerking Fee** on all purchases made using credit cards. Announcements made day of sale take precedence over any printed information.

Sales Tax will be charged, please bring your tax-exempt numbers.

#### We have 3 options for ABSENTEE BIDDING for our live auctions:

1) **WRITTEN OR PHONE:** If you **DO NOT** have internet access or access to our website, you can: Call us by phone to enter your bids at (641) 424-1116 OR By sending the numbers of the item(s) desired and the amount bid on each to: Seeck Auctions, PO Box 377, Mason City, Iowa 50402. (The mail has not been very dependable. We would prefer you call us with your bids rather than send them in a letter.)

- All written and called in bids will be entered into the online catalog by us.
- **Written and Phone Absentee Deadline:** Have all bids in by **Wednesday, March 9** for the March 12 auction and **Wednesday, March 16** for the March 19 auction.

2) **ONLINE CATALOG:** Enter your bids from our website into our online catalog through the Auction Flex system. When you get to the online catalog, you will need to login as a bidder. For the first time you will need to **set up your account** by creating a user name and password. This will include filling out a form with your name, address, etc. You will also need to **register for the auction** which will ask you to enter a valid credit card number. This card will be validated by a \$1 charge to your card. This will only happen once and you will now be able to enter bids through our online catalog by just logging in with your user name and password. You will use this user name and password for all our auctions. You are not required to pay by credit card if you are successful. This is just a safeguard for us if someone does not pay. We will let you know what you owe us through an email and you can decide how you would like to pay us.

- *An exciting advantage of entering your bids online yourself,* is the option to be notified by email if you are outbid on an item. You will know when you are outbid on an item and you can increase your bid on that item or bid on something else. **There will be a cutoff date and time for entering your bids online, generally at 9 p.m. the night before each live auction.** After this time has passed, you will not be able to enter your bids from our online catalog.
- *Remember,* that just because you are the high bidder in the online catalog, this does not mean you have won the item. Your bid will still need to beat the floor bidders and live phone bidders. This system will run our absentee bids just as we did before. You will still be able to buy the item lower than your online bid unless someone on the floor bids you higher.

3) **LIVE PHONE BIDDING:** Available on pieces with an estimated sale price of \$500 or more. If you would like to participate in live phone bidding, contact us by the **Thursday before the auction, Mar. 10 for the first auction, and Thurs., March 17 for the second auction.** We will need to know the lot# and the phone number that you can be reached at on the day of the auction. We will also need your home phone number if different than the above number. Please call with questions: 641-424-1116.

- **There is a \$7 handling charge for each successful bid. Shipping and insurance charges are additional.** bidders will be notified by phone/email if their bid(s) are successful. This will be done 1 - 3 days after the auction.
- **If you do not receive an item that sold for less than your bid, assume we cancelled your bid because the item had a severe manufacture problem, damage or was not listed correctly.**

<b>BID INCREMENTS: \$1 - \$100/\$5</b>	<b>\$100 - \$200/\$10</b>	<b>\$200 - \$700/\$25</b>	<b>\$700 - \$1,500/\$50</b>
<b>\$1,500 - \$3,000/\$100</b>	<b>\$3,000 - \$5,000/\$250</b>	<b>\$5000+ Auctioneer's Discretion</b>	

**SATURDAY, MARCH 19, 2016 — 9:30 A.M.**

**Virgil and Lenna Wiebe Collection**

- \_\_\_ 1. Sunk Daisy 5" ftd rose bowl - purple - super pretty, typical minor nick on edge of foot, probably in making
- \_\_\_ 2. Sunk Daisy 3" ftd rose bowl - marigold - pretty, has typical nick
- \_\_\_ 3. Persian Medallion rose bowl - blue - pretty, couple of manufacture rough spots on top edge
- \_\_\_ 4. Persian Medallion rose bowl - white
- \_\_\_ 5. Persian Medallion rose bowl - marigold
- \_\_\_ 6. Acanthus deep round bowl - smoke - nice
- \_\_\_ 7. Imperial Grape ruffled bowl - lavender
- \_\_\_ 8. Imperial Grape ruffled bowl - marigold
- \_\_\_ 9. Concave Flute rose bowl - aqua
- 675 \_\_\_ 10. **Blackberry Block 3 pc. tankard water set - amethyst - pitcher is super, a beauty**
- \_\_\_ 11. **Dandelion Knight's Templar mug - ice green**
- \_\_\_ 12. Dandelion Knight's Templar mug - ice blue
- \_\_\_ 13. Dandelion mug - aqua opal - butterscotch
- 700 \_\_\_ 14. **Imperial Grape 9" plate - purple - super pretty, came out of the Morgan collection, a dandy!**
- \_\_\_ 15. **Waterlily ftd ruffled sauce - lime green opal - very scarce sauce & nice**
- \_\_\_ 16. **Waterlily ftd ruffled sauce - red - scarce**
- \_\_\_ 17. Waterlily ftd ruffled sauce - aqua - scarce color
- \_\_\_ 18. Waterlily ftd ruffled sauce - green
- \_\_\_ 19. Waterlily ftd ruffled sauce - blue
- \_\_\_ 20. Waterlily ftd ruffled sauce - marigold
- 7250 \_\_\_ 21. **Tree Trunk 17 1/2" funeral vase - marigold - one of the rarer colors of these vases, highly desirable**
- \_\_\_ 22. **Big Basketweave 9 1/2" vase - sapphire - scarce**
- \_\_\_ 23. Big Basketweave 9 1/2" vase - purple - nice

- \_\_\_ 24. Embroidered Mums ruffled bowl w/ribbed back - aqua opal - rare bowl  
 \_\_\_ 25. Embroidered Mums ruffled bowl w/ribbed back - aqua - very pretty, very rare color  
 \_\_\_ 26. Embroidered Mums ruffled bowl w/ribbed back - purple - scarce  
 \_\_\_ 27. Embroidered Mums ruffled bowl w/ribbed back - blue - nice  
 \_\_\_ 28. Embroidered Mums ruffled bowl w/ribbed back - marigold - mold roughness on base  
 \_\_\_ 29. Nautilus 7" vase - purple - scarce, nice  
 \_\_\_ 30. Imperial Grape 9 pc. punch set - purple - very rare set & nice  
 \_\_\_ 31. Imperial Grape punch bowl & base - amber - rare color for these  
 \_\_\_ 32. Imperial Grape punch bowl & base - green - marked IG  
 \_\_\_ 33. Imperial Grape punch bowl & base - marigold  
 \_\_\_ 34. Daisy & Drape flared out vase - blue - scarce, very nice  
 \_\_\_ 35. Daisy & Drape flared out vase - aqua opal - butterscotch, pretty  
 \_\_\_ 36. Holly 9" plate - green - scarce color, nice  
 \_\_\_ 37. Holly 9" plate - amethyst - nice  
 \_\_\_ 38. Holly 9" plate - blue  
 \_\_\_ 39. Holly 9" plate - marigold  
 \_\_\_ 40. Stippled Grape & Cable PCE bowl w/ribbed back - aqua opal - super pretty example, irid. is very nice, another from the Morgan auction  
 \_\_\_ 41. Stippled Grape & Cable Variant PCE bowl w/ribbed back - ice blue - scarce, nice  
 \_\_\_ 42. Stippled Grape & Cable Variant PCE bowl w/ribbed back - blue - nice  
 \_\_\_ 43. Fashion breakfast set - smoke - scarce  
 \_\_\_ 44. Blackberry Open Edge 7 1/2" whimsey vase - blue - very scarce, minor nick on base  
 \_\_\_ 45. Blackberry Open Edge 8" whimsey vase - marigold - has nick on base  
 \_\_\_ 46. Lattice & Poinsettia ftd ruffled bowl w/ribbed back - ice blue - very pretty bowl, rare  
 \_\_\_ 47. Lattice & Poinsettia ftd ruffled bowl w/ribbed back - blue - has electric highlights  
 \_\_\_ 48. Lattice & Poinsettia ftd ruffled bowl w/ribbed back - marigold - nice  
 \_\_\_ 49. Lattice & Poinsettia ftd ruffled bowl - white opal - not Carnival Glass  
 \_\_\_ 50. N's Eight Sided bushel basket - ice green  
 \_\_\_ 51. N's Eight Sided bushel basket - purple  
 \_\_\_ 52. Cosmos & Cane 4 pc. table set - honey amber - great set, beautiful  
 \_\_\_ 53. Captive Rose 9" plate - amethyst - scarce color  
 90 \_\_\_ 54. Captive Rose 9" plate - blue - nice  
 150 \_\_\_ 55. Captive Rose 9" plate - marigold - pretty  
 125 \_\_\_ 56. Octagon small size water pitcher - purple - hard pitcher to find, nice #15  
 75 \_\_\_ 57. Octagon tumbler w/collar base - purple - scarce #13  
 45 \_\_\_ 58. Palm Beach whimsey rose bowl - iridized goofus or amethyst #23  
 900 \_\_\_ 59. Heavy Grape chop plate - purple - beautiful! #684  
 190 \_\_\_ 60. Drapery 7 1/4" vase - aqua opal - absolutely beautiful, minor spot of epoxy on foot (wanted \$300) #16  
 80 \_\_\_ 61. Drapery 8" vase - aqua - pretty, manufacture peeling on top edge (wanted \$100) #16  
 50 \_\_\_ 62. Drapery 8" vase - ice blue - chip on foot (w- \$100) #22  
 45 \_\_\_ 63. Drapery 7" vase - ice green - chips on foot (w- \$50) #606  
 \_\_\_ 64. Drapery 8 1/2" vase - blue - pretty, minor nick on foot (w- \$100)  
 35 \_\_\_ 65. Drapery 8" vase - marigold - chip on foot #25  
 \_\_\_ 66. M'burg Whirling Leaves square shaped crimped edge bowl - amethyst - radium, very rare shape, highly desirable (w- \$100)  
 \_\_\_ 67. M'burg Whirling Leaves tri-cornered crimped edge bowl - amethyst - radium, super pretty, very small flake on back on point  
 \_\_\_ 68. M'burg Whirling Leaves 3 in 1 edge bowl - amethyst - radium, also a rare edge  
 \_\_\_ 69. M'burg Whirling Leaves ruffled bowl - marigold - satin  
 \_\_\_ 70. Peacocks 9" plate w/ribbed back - ice blue - very scarce, nice  
 \_\_\_ 71. Peacocks 9" plate w/ribbed back - ice green - nice  
 \_\_\_ 72. Peacocks 9" plate w/ribbed back - blue - chip on back of point  
 \_\_\_ 73. Peacocks 9" plate w/ribbed back - purple - nice  
 \_\_\_ 74. Corn bottle - smoke - pretty  
 \_\_\_ 75. Heavy Grape 8" ruffled bowl - blue - very rare color for these and nice!  
 \_\_\_ 76. Kittens square shaped toothpick - marigold  
 \_\_\_ 77. Imperial Grape water pitcher & 1 tumbler - purple - nice matching set w/blue irid.  
 \_\_\_ 78. Palm Beach 7" plate - iridized goofus, used to call this amethyst, scarce  
 \_\_\_ 79. Stippled Three Fruits ruffled bowl w/ribbed back - green - very scarce color, nice  
 \_\_\_ 80. Circle Scroll butter dish, spooner & creamer - marigold - rare set, handle is cracked on creamer  
 \_\_\_ 81. Stippled Strawberry PCE bowl w/BW back - horehound - rare color, very pretty example  
 \_\_\_ 82. Stippled Strawberry PCE bowl w/ribbed back - blue - scarce  
 \_\_\_ 83. Stippled Strawberry PCE bowl w/ribbed back - marigold  
 \_\_\_ 84. Knotted Beads 9" crimped edge vase - aqua - rare color, nice  
 \_\_\_ 85. Knotted Beads 10" crimped edge vase - amber - rare color for these  
 \_\_\_ 86. NUART Homestead chop plate - purple - absolutely fantastic! great mold work, beautiful iridescence!  
 \_\_\_ 87. Kittens cup & saucer - marigold  
 \_\_\_ 88. M'burg Sunflower pin tray - green - very minor polished spot on back  
 \_\_\_ 89. Fruits & Flowers bonbon - aqua opal - butterscotch & nice, tiny polished spot on base  
 \_\_\_ 90. Fruits & Flowers bonbon - ice blue - nice  
 \_\_\_ 91. Fruits & Flowers bonbon - blue - electric highlights  
 \_\_\_ 92. Fruits & Flowers bonbon - purple - pretty  
 \_\_\_ 93. Poppy Show 9" plate - ice blue - scarce  
 \_\_\_ 94. Poppy Show 9" plate - marigold - super pretty  
 \_\_\_ 95. Miniature Morning Glory 4 1/4" vase - purple - super short, super pretty, super cute  
 \_\_\_ 96. Grape & Cable hatpin holder - green  
 90 \_\_\_ 97. Grape & Cable hatpin holder - purple #9  
 \_\_\_ 98. Grape & Cable hatpin holder - marigold  
 \_\_\_ 99. Grape & Cable hatpin holder - camphor glass - not Carnival Glass, age?  
 \_\_\_ 100. Stippled Three Fruits Medallion spt ftd ruffled bowl - aqua opal - two sharp points  
 \_\_\_ 101. Three Fruits Medallion spt ftd ruffled bowl - ice blue - scarce color  
 \_\_\_ 102. Peacock at the Fountain 4 pc. table set - purple - minor nick on inside lid of sugar bowl  
 \_\_\_ 103. Constellation ruffled compote - purple - scarce, nice  
 \_\_\_ 104. Constellation ruffled compote - marigold  
 \_\_\_ 105. Acorn Burrs 8 pc. punch set - green - rare set, bowl is just super  
 \_\_\_ 106. Ripple 9" vase - purple - 3 3/8" base  
 \_\_\_ 107. Ripple 8" vase - amber - 3 3/8" base  
 \_\_\_ 108. Blackberry Open Edge 7" plate - marigold - rare plate, minor crack in webbing  
 \_\_\_ 109. Singing Birds 4 pc. water set - green - scarce & desirable  
 \_\_\_ 110. Rose Garden 5" letter vase - blue - very minor nick on edge of base, probably in making  
 \_\_\_ 111. 1910 Detroit Elks ruffled bowl - blue - scarce  
 \_\_\_ 112. Rococo vase - marigold  
 \_\_\_ 113. Rustic 18 1/2" funeral vase - blue - very scarce, pretty  
 \_\_\_ 114. Wishbone ftd ruffled bowl - purple  
 \_\_\_ 115. Beaded Bullseye 11" vase - purple - pretty  
 \_\_\_ 116. Stippled Grape & Cable Variant / Old Rose Distilling 9" plate w/ribbed back - green - super pretty for these  
 \_\_\_ 117. Stippled Grape & Cable Variant 9" plate w/ribbed back - purple - scarce color

- \_\_\_ 118. Diamond Point 10" vase - blue - scarce color
- \_\_\_ 119. Horse Medallion 7" plate - marigold - nice
- \_\_\_ **120. M'burg Bullseye & Loop 7" squatty vase - amethyst - super nice vase, quite rare**
- \_\_\_ 121. Soutache dome ftd ruffled bowl - peach opal
- \_\_\_ 122. Orange Tree 6 pc. water set - blue - chips on feet of pitcher, minor pinpoint on foot of one tumbler
- \_\_\_ 123. Grape & Cable Variant 9" plate w/BW back - green - very pretty
- \_\_\_ **124. Thin Rib & Drape 7" vase - purple - super, ribbing has been stretched out so is hard to see**
- \_\_\_ 125. Feathered Serpent 10" IC shaped bowl - marigold - nice
- \_\_\_ 126. Peacocks PCE bowl w/ribbed back - blue
- \_\_\_ **127. Stippled Peacocks PCE bowl w/ribbed back - marigold - very minor nick on point**
- \_\_\_ 128. N's Bushel Basket - aqua opal
- \_\_\_ 129. N's Bushel Basket - lavender
- \_\_\_ **130. Stippled Good Luck ruffled bowl w/ribbed back - blue - very pretty**
- \_\_\_ 131. Grape & Cable powder jar - green
- \_\_\_ 132. Grape & Cable powder jar - purple
- \_\_\_ **133. Acorn Burrs 7 pc. water set - purple - very pretty set**
- \_\_\_ 134. M'burg Hobnail Swirl 10" vase - amethyst
- \_\_\_ 135. Persian Medallion IC shaped bowl - blue - scarce shape
- \_\_\_ **136. Three Row Open Edge ruffled bowl - celeste blue - nice**
- \_\_\_ 137. Stippled Strawberry 9" plate w/ribbed back - purple - nice, scarce
- \_\_\_ 138. File whimsy vase - marigold - kind of tough
- \_\_\_ 139. M'burg Rays & Ribbons crimped edge ruffled bowl - marigold - radium, very pretty
- \_\_\_ 140. Tornado large size vase - green - scarce, small burst by seam
- \_\_\_ 141. Orange Tree hatpin holder - blue - super pretty, 2 feet have minor nicks, 1 foot has a manufacture issue
- \_\_\_ **142. Wishbone PCE 10" bowl - blue - electric, super, teeny tiny nick on edge**
- \_\_\_ 143. Imperial Flute 7 pc. water set - marigold - 2 tumblers have large chips, 2 have rough bottoms
- \_\_\_ **144. Hearts & Flowers ruffled bowl w/ribbed back - blue - very pretty, couple of rough spots between points**
- \_\_\_ **145. Hearts & Flowers ruffled bowl w/ribbed back - ice blue**
- \_\_\_ 146. M'burg Peacock 10" ruffled bowl - amethyst - radium, nice
- \_\_\_ 147. Columbia dome ftd plate - marigold
- \_\_\_ 148. Grape & Cable cracker jar - purple
- \_\_\_ 149. Drapery rose bowl - marigold - nice
- \_\_\_ **150. Morning Glory 15" funeral vase - purple - nice**
- \_\_\_ 151. Morning Glory 13" funeral vase - marigold
- \_\_\_ 152. Heavy Grape 10" ruffled bowl - purple - nice
- \_\_\_ **153. Diamond Point bushel basket - marigold - very pretty example of this rare basket!**
- \_\_\_ 154. Lined Lattice 9" vase - purple
- \_\_\_ 155. M'burg Seaweed 3 in 1 edge 10" bowl - marigold - satin
- \_\_\_ **156. Imperial Grape water carafe - purple - pretty**
- \_\_\_ 157. Smooth Rays 10" ruffled bowl w/Jewel Heart back - purple - pretty
- \_\_\_ 158. Grape & Cable 4 pc. table set - purple - butter dish is only perfect piece
- \_\_\_ 159. Grape & Cable butter dish - green
- \_\_\_ **160. Stippled & Banded Grape & Cable banana boat - blue - scarce item**
- \_\_\_ 161. M'burg Rays & Ribbons IC shaped bowl - marigold - radium, nice
- \_\_\_ **162. Daisy & Drape turned in vase - purple - scarce, nice**
- \_\_\_ 163. Daisy & Drape turned in vase - marigold
- \_\_\_ 164. Daisy & Drape turned in vase - white
- \_\_\_ 165. Three Fruits ruffled bowl w/BW back - green - nice
- \_\_\_ 166. Kittens ruffled dish - marigold
- \_\_\_ **167. Grape & Cable water pitcher & 1 tumbler - green - nice**
- \_\_\_ 168. Grape & Cable 4 pc. water set - purple
- \_\_\_ 169. Orange Tree 5 pc. punch set - marigold - one cup has nick but bowl is beautiful
- \_\_\_ 170. Captive Rose ruffled compote - white
- \_\_\_ 171. Stippled Grape & Cable Variant ruffled bowl w/ribbed back - purple
- \_\_\_ 172. Tree Trunk 7 1/2" squatty vase - green
- \_\_\_ **173. Cobblestone ruffled bowl - purple - pretty**
- \_\_\_ 174. N's Thin Rib 6 1/2" squatty vase - green
- \_\_\_ 175. N's Thin Rib 6 1/2" squatty vase - purple
- \_\_\_ **176. Rose Show ruffled bowl - aqua opal - pastel, light on iridescence**
- \_\_\_ **177. Rose Show ruffled bowl - marigold - nice**
- \_\_\_ 178. M'burg Primrose ruffled bowl - green - radium, nice
- \_\_\_ 179. Smooth Panels 13" vase - marigold - 4 1/2" base
- \_\_\_ 180. Smooth Panels 7 1/2" squatty vase - smoke - 3 1/2" base, 6 1/4" mouth
- \_\_\_ **181. Acorn Burrs 4 pc. table set - purple - nice set, repair on bottom of lid on butter**
- \_\_\_ 182. N's Peacock at Urn IC sauce - ice blue - silvery
- \_\_\_ 183. N's Peacock at Urn IC sauce - purple
- \_\_\_ 184. N's Peacock at Urn IC sauce - marigold
- \_\_\_ 185. N's Stippled Peacock at Urn IC sauce - blue
- \_\_\_ 186. Beaded Cable rose bowl - aqua opal
- \_\_\_ **187. Diamond Lace 7 pc. water set - purple - pretty**
- \_\_\_ 188. M'burg Rays & Ribbons ruffled bowl - green - satin
- \_\_\_ **189. N's Peacock at Urn master IC bowl - purple - nice one**
- \_\_\_ 190. Concord ruffled bowl - marigold - nice
- \_\_\_ 191. Tree Trunk 13" mid size vase - green - has pouring spout
- \_\_\_ 192. Tree Trunk 12 1/2" mid size vase - purple - nice
- \_\_\_ 193. Grape Arbor tankard water pitcher & 1 tumbler - marigold
- \_\_\_ 194. Luster Rose butter dish - purple - pretty, very minor nick on top of knob
- \_\_\_ 195. Fenton Peacock at Urn 9" plate - marigold
- \_\_\_ **196. Poppy Show ruffled bowl - blue - scarce, pretty**
- \_\_\_ 197. Grape & Cable cologne bottle - marigold - nice
- \_\_\_ 198. M'burg Rosalind 10" ruffled bowl - amethyst - satin, nick on base
- \_\_\_ 199. Strawberry 9" plate w/BW back - purple
- \_\_\_ **200. Peacocks ruffled bowl w/ribbed back - aqua opal - pretty**
- \_\_\_ 201. Peacocks ruffled bowl w/ribbed back - lavender - minor scratch on surface
- \_\_\_ 202. Leaf Columns 6 1/2" squatty vase - green
- \_\_\_ 203. Peacock & Grape 3 in 1 edge bowl - green - nice
- \_\_\_ **204. Coin Spot ruffled compote - celeste blue - pretty, stretchy irid., chip on base**
- \_\_\_ 205. Grape & Cable PCE bowl w/BW back - marigold - nice
- \_\_\_ 206. Fishscale & Beads 7" plate - purple - scarce
- \_\_\_ **207. M'burg Rosalind 10" IC shaped bowl - marigold - satin, pretty, quite hard to find**
- \_\_\_ **208. Parlor Panels 8" vase - smoke - nice**
- \_\_\_ 209. Parlor Panels 5 1/4" vase - marigold - very squatty
- \_\_\_ 210. Sunflower spt ftd ruffled bowl - green - super pretty
- \_\_\_ 211. Sunflower spt ftd ruffled bowl - purple - super pretty, very minor manufacture split on edge
- \_\_\_ 212. Plaid low IC shaped bowl - marigold - could almost be called a plate
- \_\_\_ 213. Ripple 9" vase - aqua teal - 2 7/8" base
- \_\_\_ **214. Stippled Strawberry ruffled bowl w/ribbed back - lime green - rare color & nice**
- \_\_\_ 215. Stippled Strawberry ruffled bowl w/ribbed back - marigold - very minor sharp point
- \_\_\_ 216. Drapery Variant 9" vase - marigold - nice
- \_\_\_ **217. Star of David ruffled bowl - purple - super**
- \_\_\_ 218. Double Scroll candlesticks - red - scarce
- \_\_\_ **219. M'burg Tulip & Scroll 6 1/2" squatty vase - amethyst - scarce, very pretty, neat vase**

SEECK AUCTIONS  
 P.O. BOX 377  
 MASON CITY, IA 50401

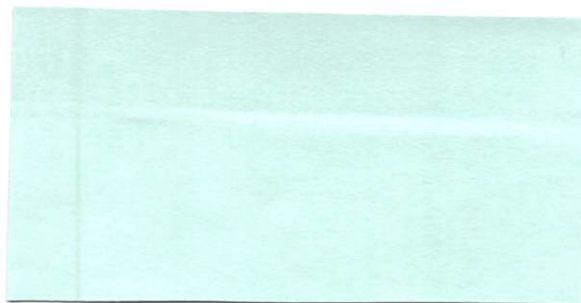
PRESORTED  
 FIRST CLASS MAIL  
 US POSTAGE  
 PAID  
 MAIL EXPEDITORS



138.  
 March 12

**2016 CARNIVAL  
 GLASS AUCTIONS**

Sat., March 12 9:30 a.m.  
 Ontario, California  
 Sat., March 19 9:30 a.m.  
 Dallas, Texas



111

- \_\_\_ 220. Carolina Dogwood ruffled bowl - blue opal
- \_\_\_ 221. Imperial Grape 6" plate - purple
- \_\_\_ 222. Cosmos & Cane spittoon shaped compote - honey amber - minor nick & heat check on base
- \_\_\_ 223. Holly IC shaped bowl - blue
- \_\_\_ 224. Six Sided candlestick - green
- \_\_\_ 225. Stippled Three Fruits PCE bowl w/ribbed back - blue - very pretty w/electric highlights
- \_\_\_ 226. Stippled Three Fruits PCE bowl w/ribbed back - marigold
- \_\_\_ 227. Floral & Grape 4 pc. water set - blue - pitcher is pretty
- \_\_\_ 228. Peacock & Grape ruffled bowl - peach opal - super pretty
- \_\_\_ 229. Daisy Web ruffled hat - purple - beautiful
- \_\_\_ 230. Circle Scroll JIP hat - marigold - nice
- \_\_\_ 231. Shell & Sand deep ruffled bowl - purple
- \_\_\_ 232. Stippled & Banded Grape & Cable dresser tray - marigold - hard to find
- \_\_\_ 233. Round Up 9" plate - blue
- \_\_\_ 234. M'burg Seacoast pin tray - amethyst - rare & desirable
- \_\_\_ 235. Stippled Three Fruits 9" plate w/ribbed back - lavender
- \_\_\_ 236. Circle Scroll 8" vase - purple - scarce, nice
- \_\_\_ 237. Circle Scroll 7 1/2" vase - marigold - also nice
- 130 238. Starburst spittoon - blue - Riihimaki #6 #604
- 65 239. M'burg Rosalind 10" 3 in 1 edge bowl - marigold - satin, nice
- 325 240. Fern Brand Chocolates advertising card tray shaped dish - amethyst - scarce, nice #628
- 405 241. Palm Beach 7" whimsey vase - marigold - neat vase #3
- 140 242. Honeycomb & Beads tri-cornered crimped edge dish - purple - pretty #10 #
- 350 243. N's Thin Rib 11" vase - sapphire - very scarce vase, nice
- 400 244. N's Dandelion tankard water pitcher - purple - scarce, nice #8
- 160 245. M'burg Bullseye & Loop 10" vase - amethyst - scarce #2
- 105 246. Scroll & Flower Panels vase - marigold #27
- 525 247. M'burg Courthouse ruffled bowl - amethyst - radium, nice #608
- 130 248. Concord 3 in 1 edge bowl - green - epoxy on small spot on seam of base #32
- 100 249. N's Thin Rib 14" mid size vase - green #688a
- 35 250. N's Thin Rib 13" mid size vase - marigold #606
- 1050 251. Stippled Grape & Cable humidior - renninger blue - very scarce item, nice (w-#500) #6
- 120 252. N's Corn vase w/stalk base - ice green (w-#500) #606
- 250 253. Amaryllis dome ftd miniature compote - purple - highly desirable #682
- 254. Grape & Cable pin tray - marigold
- 525 255. Concord 9" plate - amethyst - very scarce & highly desirable #260 #668
- 190 256. Tree Trunk 10" vase - lime green - scarce #668
- 50 257. Fern ruffled compote - green - nice
- 650 258. Wishbone & Spades 6" plate - purple - fantastic #5



46.  
 March 19