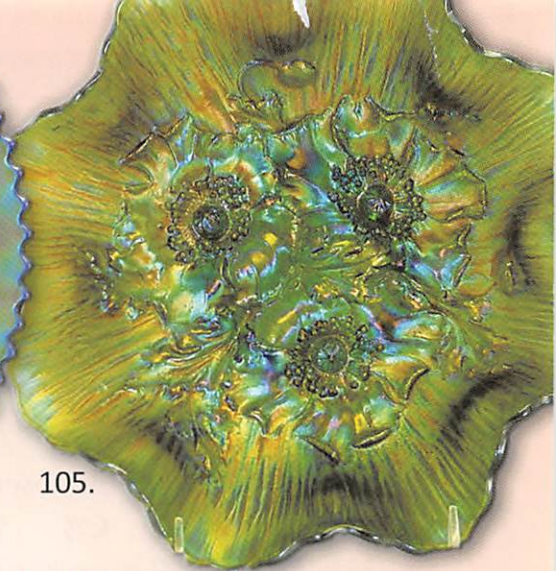




30.



12.



105.

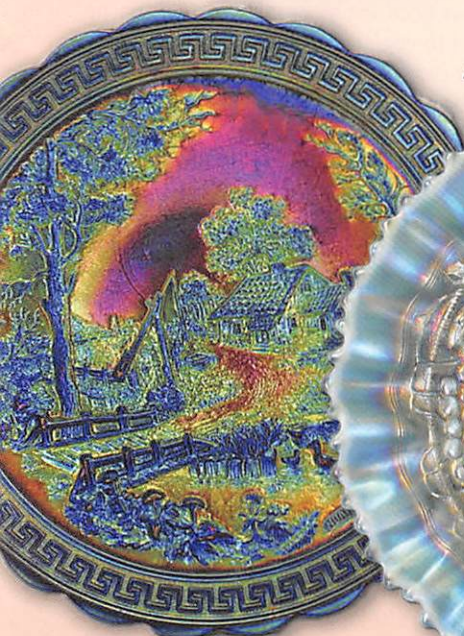
Southern California Carnival
Glass Club Convention
Saturday, March 12 9:30 a.m.
Ontario, California

Carnival Glass 2016 Auctions

Open
to the Public

Texas Carnival Glass Club Convention
Saturday, March 19 9:30 a.m.
Dallas, Texas

86.



40.



21.

105.



Seck Auctions
Jim & Jan Seck
641-424-1116



SATURDAY, MARCH 12, 2016 — 9:30 A.M.

Jim & Jan Seeck

*Ayres Country Suites Hotel 1945 E. Holt Blvd.
Ontario, California 91764*

641-424-1116

★ Online absentee bidding closes, Friday, March 11 at 9 pm CST

☞ David Hamilton Estate ☛

SATURDAY, MARCH 19, 2016 — 9:30 A.M.

*Wyndham Dallas Suites- Park Central
7800 Alpha Road, Dallas, Texas 75240*

★ Online absentee bidding closes, Friday, March 18 at 9 pm CST

☞ Virgil and Lenna Wiebe Collection ☛

ABSENTEE BIDDING is available on-line through Auction Flex using our online catalog at www.seeckauction.com

NO BUYER'S PREMIUM -- OPEN TO THE PUBLIC -- EMAIL: jimjan@seeckauction.com

Lodging for the March 12 California auction

Lodging for the March 19 Texas auction

If staying at the Hotel, call direct for room reservations: 909-390-7778. Cutoff date for reservations is Feb. 18, 2016.

San Diego / Southern Calif. Convention info: Contact Heidi Ritterbush at 805-492-3903 or hritterbush55@hotmail.com Club Website: www.sccgc.webs.com

If staying at the Hotel, call direct for room reservations: 972-233-7600, option 2 and tell them you are with the Texas Carnival Glass Club. For Texas Club Convention info: Contact President Emmett Morgan at: 979-836-7896 Club Website: www.texas carnival glass.org

Terms: Cash or Check, VISA, MasterCard and Discover accepted w/proper ID. **4% Clerking Fee** on all purchases made using credit cards. Announcements made day of sale take precedence over any printed information.

Sales Tax will be charged, please bring your tax-exempt numbers.

We have 3 options for ABSENTEE BIDDING for our live auctions:

1) **WRITTEN OR PHONE:** If you **DO NOT** have internet access or access to our website, you can: Call us by phone to enter your bids at (641) 424-1116 OR By sending the numbers of the item(s) desired and the amount bid on each to: Seeck Auctions, PO Box 377, Mason City, Iowa 50402. (The mail has not been very dependable. We would prefer you call us with your bids rather than send them in a letter.)

- All written and called in bids will be entered into the online catalog by us.
- **Written and Phone Absentee Deadline:** Have all bids in by **Wednesday, March 9** for the March 12 auction and **Wednesday, March 16** for the March 19 auction.

2) **ONLINE CATALOG:** Enter your bids from our website into our online catalog through the Auction Flex system. When you get to the online catalog, you will need to login as a bidder. For the first time you will need to **set up your account** by creating a user name and password. This will include filling out a form with your name, address, etc. You will also need to **register for the auction** which will ask you to enter a valid credit card number. This card will be validated by a \$1 charge to your card. This will only happen once and you will now be able to enter bids through our online catalog by just logging in with your user name and password. You will use this user name and password for all our auctions. You are not required to pay by credit card if you are successful. This is just a safeguard for us if someone does not pay. We will let you know what you owe us through an email and you can decide how you would like to pay us.

- *An exciting advantage of entering your bids online yourself,* is the option to be notified by email if you are outbid on an item. You will know when you are outbid on an item and you can increase your bid on that item or bid on something else. **There will be a cutoff date and time for entering your bids online, generally at 9 p.m. the night before each live auction.** After this time has passed, you will not be able to enter your bids from our online catalog.
- *Remember,* that just because you are the high bidder in the online catalog, this does not mean you have won the item. Your bid will still need to beat the floor bidders and live phone bidders. This system will run our absentee bids just as we did before. You will still be able to buy the item lower than your online bid unless someone on the floor bids you higher.

3) **LIVE PHONE BIDDING:** Available on pieces with an estimated sale price of \$500 or more. If you would like to participate in live phone bidding, contact us by the **Thursday before the auction, Mar. 10 for the first auction, and Thurs., March 17 for the second auction.** We will need to know the lot# and the phone number that you can be reached at on the day of the auction. We will also need your home phone number if different than the above number. Please call with questions: 641-424-1116.

- **There is a \$7 handling charge for each successful bid. Shipping and insurance charges are additional.** bidders will be notified by phone/email if their bid(s) are successful. This will be done 1 - 3 days after the auction.
- **If you do not receive an item that sold for less than your bid, assume we cancelled your bid because the item had a severe manufacture problem, damage or was not listed correctly.**

BID INCREMENTS: \$1 - \$100/\$5	\$100 - \$200/\$10	\$200 - \$700/\$25	\$700 - \$1,500/\$50
\$1,500 - \$3,000/\$100	\$3,000 - \$5,000/\$250	\$5000+ Auctioneer's Discretion	

David Hamilton Estate

- ___ 1. N's Flute 7 pc. water set - marigold - 2 tumblers have nicks on base
- ___ 2. N's Flute 4 pc. table set - green - ribs on spooner & sugar have roughness, sugar also has chip on handle
- ___ 3. Imperial Flute ftd water pitcher - marigold
- ___ 4. Lotus & Thistle 7" IC shaped bowl - blue
- ___ 5. Scroll Embossed 9" ruffled bowl w/File back - smoke - nice
- ___ 6. Imperial Grape 9" plate - marigold
- ___ 7. M'burg Blackberry Wreath 9" 3 in 1 edge bowl - amethyst - satin, nice
- ___ 8. Fenton's Peacock at Urn ruffled compote - vaseline - nice
- ___ 9. M'burg Grape Leaves IC shaped bowl - green - fantastic radium irid., beautiful & rare!
- ___ 10. Dugan Cherries ftd ruffled bowl - purple - nice
- ___ 11. Apple Blossom Twigs IC shaped bowl - smoky lavender-super pretty irid.
- ___ 12. Greek Key 9" plate w/ribbed back - blue - super pretty, very rare plate
- ___ 13. Greek Key 9" plate w/BW back - marigold - nice
- ___ 14. Stag & Holly lg size ftd deep bowl - purple - scarce color
- ___ 15. Grape & Cable cologne bottle - ice blue - very rare & frosty, has manufacture wrinkle on top edge
- ___ 16. Heavy Grape chop plate - purple - super pretty, a dandy!
- ___ 17. Heavy Grape chop plate - amber - scarce
- ___ 18. Inverted Thistle 7 pc. water set - amethyst - very rare set & highly desirable, not many full sets around
- ___ 19. N's Flute 7 pc. salt set - marigold
- ___ 20. Geo. W. Getts Pianos 6" advertising plate - amethyst - very scarce & nice
- ___ 21. Carnival Hobstar 4 pc. table set - purple - super pretty set, quite hard to get
- ___ 22. Stippled Peacock at Urn 10" ruffled bowl - super pretty, made from the IC bowl
- ___ 23. Imperial Flute water pitcher - purple - super pretty, nick on top edge
- ___ 24. Imperial Flute water pitcher - aqua teal - very rare pitcher in this color, not sure if I have sold another of these
- ___ 25. Imperial Flute tumbler - aqua teal - scarce tumbler
- ___ 26. Imperial Flute breakfast set - purple - pretty
- ___ 27. Imperial Flute 7 pc. berry set - purple - pretty
- ___ 28. Imperial Flute ruffled 7 pc. punch set - green - scarce
- ___ 29. Imperial Flute ruffled 12 pc. punch set - marigold
- ___ 30. Wild Rose Open Edge ftd nut bowl - ice blue - extremely rare, one or two known, manufacture separation on edge, see photo, no harm
- ___ 31. Daisy Web tri-cornered crimped edge hat - marigold - super pink & yellow irid., neat piece
- ___ 32. Stag & Holly lg size IC shaped ftd bowl - aqua - scarce, nice
- ___ 33. Stag & Holly lg size IC shaped ftd bowl - blue
- ___ 34. N's Thin Rib 5 1/2" squatty vase - purple - nice
- ___ 35. Orange Tree w/trunk IC shaped bowl - marigold
- ___ 36. NUART Homestead chop plate - amber - fantastic irid., very scarce
- ___ 37. NUART Homestead chop plate - purple - another very beautiful chop plate
- ___ 38. M'burg Hanging Cherries 10" 3 in 1 edge bowl - green - satin
- ___ 39. Grape Leaves ruffled bowl - ice blue - very rare bowl, very pretty!!
- ___ 40. Grape Leaves ruffled bowl - green - super
- ___ 41. Hearts & Flowers ruffled compote - aqua opal - pastel & nice
- ___ 42. Autumn Acorn 9" plate - blue - extremely rare plate, not many known and nice
- ___ 43. Autumn Acorn 9" plate - green - also a rare plate and nice
- ___ 44. Autumn Acorn 9" plate - marigold - the rarest color, only a few known, nice
- ___ 45. Double Scroll console set - red - scarce set
- ___ 46. Double Scroll console set - aqua teal - another rare color, minor pinpoint on base of bowl
- ___ 47. Peacock & Grape ruffled bowl - red - scarce, nice
- ___ 48. Peacock & Grape ruffled bowl - green - pretty
- ___ 49. Tornado small size vase - purple - very nice example, scarce
- ___ 50. Fenton's Peacock at Urn 9" plate - blue - electric & super!
- ___ 51. Fenton's Peacock at Urn 9" plate - marigold - nice
- ___ 52. Grape & Gothic Arches 7 pc. water set - green - very pretty set, quite scarce
- ___ 53. Grape & Gothic Arches 7 pc. water set - blue - another scarce set, we'll give you one extra damaged tumbler
- ___ 54. M'burg Campbell & Beesley 1911 handgrip advertising 6" plate - amethyst - very piece, nice example
- ___ 55. Good Luck ruffled bowl w/BW back - green
- ___ 56. Wreath Cherry 4 pc. table set - purple - butter dish bottom is signed with the rare Dugan Diamond mark, great set
- ___ 57. Pair of Wreath Cherry tumblers - purple - one has chips on base
- ___ 58. Poppy Show 9" plate - ice blue - pretty, scarce, very small chip on collar base
- ___ 59. Poppy Show 9" plate - blue - nice, even irid., scarce
- ___ 60. Poppy Show 9" plate - marigold - minor nick on poppy, a nice one
- ___ 61. Imperial Grape 7 pc. wine set - green - nice
- ___ 62. Wishbone 10" PCE bowl w/BW back - blue - rare color, electric irid.
- ___ 63. Octagon 4 pc. table set - green - very rare set, butter dish bottom and sugar bottom are aqua, creamer has very minor nick on bottom of pattern near base
- ___ 64. M'burg Strawberry Wreath tri-cornered 10" crimped edge bowl - amethyst - radium & nice, rare piece
- ___ 65. N's Thin Rib 11" vase - sapphire - rare color, nice
- ___ 66. N's Thin Rib 10" vase - ice green - also nice
- ___ 67. Open Rose 9" plate - purple - scarce, nice
- ___ 68. Open Rose 9" plate - amber - pretty
- ___ 69. Cherry Chain chop plate - marigold - super pretty with super nice irid.!
- ___ 70. Fluffy Peacock 7 pc. water set - amethyst - very minor heat check in body of pitcher where handle applies, no harm
- ___ 71. Fluffy Peacock water pitcher - green - 1" heat check where handle applies
- ___ 72. Fluffy Peacock tumbler - green
- ___ 73. Peacocks ruffled bowl w/ribbed back - aqua opal - butterscotch & nice
- ___ 74. Peacocks ruffled bowl w/ribbed back - sapphire - very pretty irid., super rare bowl
- ___ 75. Peacocks ruffled bowl w/ribbed back - blue opal - not Carnival Glass
- ___ 76. Panther ftd centerpiece bowl - blue - extremely rare bowl, not many around, nice
- ___ 77. Corinth 9" vase - blue opal - nice
- ___ 78. Feathered Serpent 10" ruffled bowl - blue - only iridized on back side, different
- ___ 79. Feathered Serpent 10" 3 in 1 edge bowl - blue - nice, scarce shape
- ___ 80. Horse Medallion JIP ftd bowl - vaseline - has pretty marigold overlay, nice piece
- ___ 81. Horse Medallion JIP ftd bowl - blue - another really pretty one of these
- ___ 82. Shell 9" plate - marigold - super pretty example, scarce
- ___ 83. Vintage 3 in 1 edge bowl - aqua opal - very rare, nice opal, silver irid.
- ___ 84. Leaf Chain 9" plate AND ruffled bowl - green - both silvery
- ___ 85. Stippled Peacocks 9" plate w/ribbed back - blue - has electric highlights

- ___ 86. Brooklyn Bridge 6 ruffled bowl – marigold
- ___ 87. Tree Trunk 11” vase – purple - nice
- ___ **88. Nippon PCE bowl w/ribbed back - lime green - super pretty bowl, rare color**
- ___ 89. Nippon PCE bowl w/BW back - ice blue - pretty
- ___ **90. Garden Path Variant chop plate - peach opal - extremely rare with only a handful known, nice**
- ___ 91. Grapevine Lattice 7” ruffled bowl - purple - super pretty
- ___ 92. Stag & Holly spt ftd IC shaped bowl – green
- ___ 93. Four Pillars 10” vase - aqua opal
- ___ **94. M’burg Big Fish ruffled bowl - amethyst - radium & super beautiful bowl!**
- ___ **95. M’burg Big Fish 3 in 1 edge bowl - marigold - satin, scarce**
- ___ 96. Holly 9” plate - white - very nice
- ___ **97. Davidson’s Society Chocolates double handgrip 6” plate - amethyst - very nice for these, scarce**
- ___ 98. CR ashtray - blue - bottom point of “R” has been polished
- ___ 99. CR ashtray - marigold - small buffed spot on corner
- ___ **100. M’burg Peacocks master IC shaped bowl – amethyst - radium, scarce**
- ___ **101. M’burg Peacock at Urn master IC bowl - green - satin, nice**
- ___ 102. Stretch Glass Trumpet Twist console set - celeste blue
- ___ 103. Stretch Glass Ash Tray set – vaseline - 4 pc. set
- ___ 104. Stretch Glass 7 pc. nut set - celeste blue
- ___ **105. Poppy Show ruffled bowl - green - super pretty, rare and hard to find**
- ___ 106. Windmill lg size ruffled bowl - green - silvery
- ___ **107. M’burg Peacock at Urn 10” ruffled bowl - amethyst - satin, nice**
- ___ 108. Enameled Orchid 7 pc water set - ice green - scarce set, one tumbler has minor nick on bottom
- ___ **109. Persian Garden 11” deep ruffled bowl - purple - this is not a fruit bowl top**
- ___ 110. Stippled Three Fruits Medallion spt ftd ruffled bowl - aqua opal
- ___ **111. Inverted Thistle chop plate - amethyst - very rare, just a few known, nice**
- ___ 112. Wreathed Cherry 7 pc. banana boat shaped berry set - white w/red cherries - one sauce has chip on base
- ___ 113. Wreathed Cherry 6 pc. banana boat shaped berry set - purple
- ___ **114. Garden Path Variant 10” ruffled bowl - purple - scarce, pretty!**
- ___ 115. Garden Path Variant 10” ruffled bowl - peach opal
- ___ **116. Inverted Thistle lg size ruffled compote - green - one of only a handful known, very rare item, neat**
- ___ 117. Beaded purse w/3 coin pursed inside - Made in Hong Kong
- ___ **118. N’s Stippled Peacock at Urn master IC bowl - blue - scarce item & nice**
- ___ **119. N’s Stippled Peacock at Urn master IC bowl - pastel marigold - nice**
- ___ 120. N’s Peacock at Urn master IC bowl – custard - not Carnival Glass, we’ll give you a stippled sauce that has polished base
- ___ **121. Rose Show ruffled bowl - lime green opal - super pretty irid. on this rare bowl, lots of opal in the roses**
- ___ 122. Rose Show ruffled bowl - white - scarce
- ___ 123. Heavy Grape master ruffled berry bowl - purple
- ___ **124. Horse Medallion 7” plate - powder blue - very rare plate, super nice**
- ___ 125. Stippled Three Fruits 9” plate w/ribbed back - purple - one point has been buffed on side
- ___ 126. Stippled Three Fruits 9” plate w/ribbed back - marigold - very pretty
- ___ **127. N’s Peacock at Urn chop plate - purple - very nice example, rare**
- ___ 128. Imperial Grape 8 pc. berry set - green - has 2 masters, 6 small
- ___ 129. Holly 9” plate - blue - very pretty example, epoxied chip on base
- ___ **130. Springtime 4 pc. table set – green - rare set**
- ___ 131. Oriental Poppy 7 pc. tankard water set - purple - highly desirable, nice
- ___ 132. Fleur de Lis dome ftd 10” ruffled bowl - smoke - pretty
- ___ **133. Peacocks 9” plate w/ribbed back - blue - has electric highlights**
- ___ 134. Peacocks 9” plate w/ribbed back - purple - pretty
- ___ 135. Peacocks 9” plate w/ribbed back - ice green - nice
- ___ 136. Grape & Cable whiskey decanter – purple
- ___ 137. Dugan Vintage dome ftd 9” plate - marigold - rare piece & pretty
- ___ **138. Little Daisies 10” ruffled bowl - blue - very rare Fenton pattern, highly desirable, a great opportunity**
- ___ 139. Open Rose 8” ruffled bowl - smoky blue - pretty irid.
- ___ 140. Beetle ashtray - purple - scarce
- ___ 141. Beetle ashtray - marigold - scarce, pretty
- ___ 142. Good Luck PCE bowl w/ribbed back - purple - very pretty
- ___ 143. Grape & Cable Variant 9” plate w/BW back - marigold - mold roughness on base
- ___ 144. M’burg Hobnail Swirl rose bowl - amethyst - pretty example & scarce
- ___ 145. M’burg Hobnail Swirl rose bowl - marigold - very pretty for these
- ___ 146. M’burg Primrose bowl - green AND M’burg Whirling Leaves bowl - marigold - both lack irid., Primrose has edge chip
- ___ **147. Embroidered Mums ruffled bowl w/ribbed back- aqua - pretty for this rare color, one point repaired**
- ___ 148. Embroidered Mums ruffled bowl w/ribbed back - blue - very pretty
- ___ **149. Dragon & Lotus 3 in 1 edge bowl - peach opal - scarce, nice**
- ___ 150. Holly ruffled bowl - red - silvery
- ___ **151. Fenton’s Peacock at Urn ruffled bowl - green - electric & fantastic, as good as they get!**
- ___ 152. Fenton's Peacock at Urn 6 ruffled bowl - blue - super pretty
- ___ 153. Fenton's Peacock at Urn 6 ruffled bowl - light marigold - lacks irid.
- ___ **154. Wishbone & Spades chop plate - purple - very pretty example of this rare chop plate**
- ___ 155. Luster Rose 4 pc. berry set - green
- ___ 156. Persian Medallion 3 in 1 edge bowl - blue - silvery
- ___ 157. Floral & Grape 7 pc. water set - blue
- ___ 158. Cosmos & Cane butter dish - white - scarce, nice
- ___ **159. Little Flowers chop plate - marigold - light irid., very scarce**
- ___ **160. Lewis 66 Rye Utah Liquor Co. handgrip advertising plate - amethyst - super nice example!**
- ___ 161. Thistle IC shaped bowl - marigold
- ___ **162. Singing Birds 7 pc. water set - green - very pretty, will give you an extra tumbler with a little damage**
- ___ 163. Holly IC shaped bowl - blue - nice
- ___ 164. Mae West console set – red - scarce set
- ___ 165. Captive Rose 3 in 1 edge bowl - blue - silvery
- ___ **166. N’s Peacock at Urn master IC bowl - ice green - scarce**
- ___ **167. N’s Peacock at Urn master IC bowl - purple - super example**
- ___ **168. N’s Peacock at Urn master IC bowl – marigold - fantastic, dark & super, some may call pumpkin**
- ___ 169. N’s Peacock at Urn master IC bowl - marigold - pastel irid.
- ___ 170. Singing Birds 4 pc. table set - purple - manufacture roughness on top of sugar lid
- ___ **171. Petal & Fan lg size ruffled bowl - marigold - has fantastic pink & yellow irid., the yellow is amazing!**
- ___ 172. Scroll Embossed 9” plate – purple - has a lot of pretty green irid.
- ___ **173. Stippled Strawberry ruffled bowl w/ribbed back - lime green - very scarce bowl, nice**
- ___ 174. Ski Star lg size ruffled bowl - purple
- ___ 175. Scales ruffled bowl - blue opal
- ___ 176. Lot of 8 Luster Rose tumblers - purple - 2 tumblers are damaged

- ___ 177. **Orange Tree w/Trunk 9" plate - blue - super pretty**
- ___ 178. Orange Tree w/Trunk 9" plate - white - has sun colored lavender tint, has light irid.
- ___ 179. Wreath of Roses whimsy flared out punch bowl top w/ Vintage interior - green - rare whimsy shape, bases are available
- ___ 180. Two Flowers lg size ftd ruffled bowl - marigold - silvery
- ___ 181. **Grape & Gothic Arches 4 pc. table set - green - super pretty scarce set**
- ___ 182. Dragon & Lotus IC shaped bowl - blue
- ___ 183. **Lotus & Grape 9" plate - green - scarce, minor rubs on grapes**
- ___ 184. Rising Sun 7 pc. water set - blue - very rare set
- ___ 185. Lot of 2 Flute toothpicks - purple & green - chip on side of rib on green
- ___ 186. Persian Medallion chop plate - blue - scarce
- ___ 187. Rustic 7" squatty vase - white
- ___ 188. Persian Garden ruffled fruit bowl top - marigold
- ___ 189. Imperial Grape 6" plate - aqua teal - rare color for these
- ___ 190. **N's Peacock at Urn 10" ruffled bowl - marigold - super pretty, made from IC bowl**
- ___ 191. M'burg Fleur de Lis dome ftd IC shaped bowl - green - radium & nice, has a couple of typical nicks on saw tooth base
- ___ 192. Four Flowers 10" ruffled bowl - purple - super pretty, a beauty
- ___ 193. Octagon 11" square shaped bowl - green - unusual piece
- ___ 194. **Mikado ruffled compote - powder blue - rare color**
- ___ 195. Isaac Benesch & Sons ruffled advertising bowl - amethyst - scarce
- ___ 196. Fircone large vase - marigold - scarce vase
- ___ 197. **M'burg Sunflower pin tray - green - maybe as pretty of one as I have seen, has manufacture extra glass on base rim**
- ___ 198. Dandelion 6 pc. water set - purple - crack in handle where attaches
- ___ 199. Floral & Optic ftd chop plate - clambroth
- ___ 200. Greek Key ruffled bowl w/ribbed back - blue - has very pretty electric highlights
- ___ 201. Pond Lily bonbon - white - scarce color, small chip on side of handle
- ___ 202. **Six Sided candlesticks - green - scarce color**
- ___ 203. Imperial Grape lg size ruffled bowl - purple
- ___ 204. **Dandelion / Knights Templar mug - ice green - scarce color, nice for these**
- ___ 205. Holly 3 in 1 edge bowl - aqua teal - very scarce color
- ___ 206. Good Luck ruffled bowl w/BW back - horehound - rare color, nice
- ___ 207. Persian Medallion 10" 3 in 1 edge bowl - blue
- ___ 208. **Hearts & Flowers 9" plate w/ribbed back - green - scarce plate, nice**
- ___ 209. **Hearts & Flowers 9" plate w/ribbed back - marigold - scarce, nice**
- ___ 210. Vintage powder jar - marigold
- ___ 211. Stippled Grape & Cable Variant PCE bowl w/ribbed back - blue - very rare color, nice
- ___ 212. Three Fruits 9" plate w/plain back - green - pretty, some rubbing on fruit
- ___ 213. Acanthus deep round bowl - purple - super nice
- ___ 214. **M'burg Trout & Fly ruffled bowl - lavender - super pretty lavender satin irid., rare color**
- ___ 215. Imperial Flute punch bowl & base - marigold - crack in base
- ___ 216. **Stippled Peacocks 9" plate w/ribbed back - blue - scarce**
- ___ 217. Fenton Peacock at Urn 9" plate - marigold
- ___ 218. Flute 7 pc. berry set - purple - pretty
- ___ 219. Imperial Grape 9" plate - marigold
- ___ 220. **Apple Blossom Twigs IC shaped bowl - smoky lavender - super pretty**
- ___ 221. Fleur de Lis dome ftd 10" ruffled bowl - smoke
- ___ 222. Heavy Grape chop plate - purple - super nice
- ___ 223. **Rose Show 9" plate - green - very, very pretty example, tiny pinpoint on top of one rose**
- ___ 224. **Rose Show 9" plate - blue - very nice example**
- ___ 225. **Octagon 7 pc. wine set - purple - outstanding, rare set, do not sell these often**
- ___ 226. **Stippled Peacocks PCE bowl w/ribbed back - marigold - covered w/pink irid., beautiful!**
- ___ 227. Lot of 3 non Carnival bowls
- ___ 228. Lot of 3 non Carnival pcs - red
- ___ 229. Lot of 4 misc. pcs.
- ___ 230. Pair of Fenton #449 8 1/2" candlesticks - red - non Carnival
- ___ 231. Lined Lattice turned in 5" vase - vaseline opal - non Carnival
- ___ 232. Lot of 3 Jeweled Heart pcs. - red - non Carnival
- ___ 233. Jeweled Heart 7 pc. water set - blue opal - non Carnival
- ___ 234. Enameled Pigeon Blood 7 pc. water set - red - one tumbler has nick, non Carnival
- ___ 235. Enameled 7 pc. tankard water set - blue - non Carnival
- ___ 236. Enameled decorated 10" brides bowl - non Carnival
- ___ 237. Alaska pattern 4 pc. table set - blue opal - non Carnival
- ___ 238. Alaska pattern banana boat shape - blue opal - non Carnival
- ___ 239. Peacock at the Fountain whimsy flared out fruit bowl - frosted green glass - non Carnival, unusual
- ___ 240. Lot of 3 black glass lifts
- ___ 241. Pair of contemporary Carnival Glass items
- ___ 242. Chrysanthemum Sprig cruet - blue custard - non Carnival
- ___ 243. Chrysanthemum Sprig 4 pc table set - blue custard - non Carnival, chip on base of butter dish
- ___ 244. Chrysanthemum Sprig compote - blue custard - non Carnival
- ___ 245. Chrysanthemum Sprig toothpick - blue custard - non Carnival
- ___ 246. Lot of 2 pcs. of Carnival Glass - both have damage

SEECK AUCTIONS
P.O. BOX 377
MASON CITY, IA 50401

PRESORTED
FIRST CLASS MAIL
US POSTAGE
PAID
MAIL EXPEDITORS



138.
March 12

**2016 CARNIVAL
GLASS AUCTIONS**

Sat., March 12 9:30 a.m.
Ontario, California
Sat., March 19 9:30 a.m.
Dallas, Texas

