

- _____ 1. W-Fenton Blackberry Open Edge JIP 7" hat, webbing cracks
- _____ 2. **W-Grape Delight** rosebowl, frosty
- _____ 3. P-N Fine Cut and Roses rosebowl
- _____ 4. **Superb M-N Leaf and Beads** rosebowl, hot pinks, blues and yellows
- _____ 5. M-Imp Grape 6 1/2" plate, pretty
- _____ 6. **Electric P-Imp Scroll Embossed 5 3/4" bowl, File exterior**
- _____ 7. M-N Grape and Cable handled pin dish whimsy from punch cup, scarce
- _____ 8. **Stunning-Mlbg Peacock 5 1/4" berry bowl, ravishing colors**
- _____ 9. M-Mlbg Blackberry Wreath 5 3/4", 3 in 1 bowl
- _____ 10. **M-Mlbg Hanging Cherries 6" ICS bowl, oh so nice**
- _____ 11. M-Mlbg Holly Sprig tri-corner nappy
- _____ 11A. P-Mlbg Peacock at Urn 5 1/2" ICS bowl
- _____ 12. **A-Fenton Pine Cone 6 1/4", 12-sided plate, pretty**
- _____ 13. Lav-Fenton Sailboats 6" bowl, scarce color, nice pressing
- _____ 14. **B-N Peacock at Urn 5 1/2" ICS bowl, outstanding iridescence!**
- _____ 15. Electric P-Imp Pansy 9" bowl
- _____ 16. **Electric P-Imp Grape 7", deep, round, bowl, super grapes**
- _____ 17. Electric P-Imp Grape 9 1/2", deep, round bowl
- _____ 18. **Electric P-Imp Grape 9", low ruffled bowl**
- _____ 19. P-Imp Scroll Embossed 9" plate, striking color, variant base
- _____ 20. **M-Imp Scroll Embossed 9 1/4" plate, great example for marigold**
- _____ 21. P-Imp Heavy Grape 7" bowl, electric hues
- _____ 22. **Electric P-Imp Heavy Grape 8" plate**
- _____ 23. Awesome P-Imp Star Of David 9" bowl, find one better
- _____ 24. **M-Imp Hobstar butter dish with lid, beautiful**
- _____ 25. Amber-Imp Open Rose 7 1/2" round, flared bowl, well above average
- _____ 26. **Helios G-Imp Shell and Sand 7 3/4" bowl, mirrored finish**
- _____ 27. P-Big Basketweave 3 3/4" squatty vase, nice
- _____ 28. **M-Kittens 4 1/2" plate, radium finish**
- _____ 29. Pumpkin M-N Memphis punch/fruit bowl base, chip inside top rim
- _____ 30. **Dark M-Mlbg Four Pillars 10 1/4" vase, a beauty**
- _____ 31. M-Imp Mini Morning Glory 5 3/4" vase
- _____ 32. **M-Imp Ripple 6 1/4" vase, a cutie**
- _____ 33. PO-Dugan Wide Rib 9 1/2" vase
- _____ 34. **M-Cambridge Wheat Sheaf cologne bottle, no stopper, very rare**
- _____ 35. Dark Red-Fenton Holly 6 1/2" hat, beautifully iridized
- _____ 36. **Rare AO-Fenton Vintage 7 1/4" bowl, buffed top rim**
- _____ 37. W-Fenton Holly 8 3/4" ICS bowl, pretty
- _____ 38. **Super M-Imp Flute toothpick**
- _____ 39. Gorgeous W-Fishscale and Beads 7 3/4" plate, great pastels
- _____ 40. **B-Fenton Butterflies square bonbon**
- _____ 41. Dark M-Fenton Butterflies card tray bonbon, nice
- _____ 42. **P-Fenton Butterflies card tray bonbon**
- _____ 43. P-N Leaf and Beads rosebowl
- _____ 44. **Ice G-N Rose Show 9" bowl, highly desirable and pretty**
- _____ 45. Persian Blue-Westmoreland Smooth Rays 8 3/4" bowl, very rare
- _____ 46. **AO-N round Bushel basket, fine example**
- _____ 47. P-N round Bushel basket
- _____ 48. **G-Mlbg Rays and Ribbons 10", 3 in 1 bowl, great piece**
- _____ 49. Killer B-N Tree Trunk 13" mid-size vase, the color is astonishing, factory peeling on top rim
- _____ 50. **Lime G-N Tree Trunk 13" mid-size vase, rare, with beautiful pastel iridescence**
- _____ 51. Super M-N Tree Trunk 11" mid-size vase, 5 3/4" opening
- _____ 52. **Sapphire-N Tree Trunk 10 1/2" vase, very scarce color**
- _____ 53. Super P-N Tree Trunk 10 1/2" vase
- _____ 54. **M-N Tree Trunk 11 1/2" vase, pretty**
- _____ 55. M-N Fine Rib 10 1/2" vase, outstanding pastels
- _____ 56. **P-Dugan Target 12 1/2" vase, radium and nice**
- _____ 57. P-Imp Ripple 13" vase, electric hues
- _____ 58. **Lav-N Fine 10" vase, scarce color**
- _____ 59. Electric P-Imp Ripple 10" vase
- _____ 60. **Ice B-N Thin Rib 11 1/4" vase, nice pastels**
- _____ 61. Ice B-N Drapery rosebowl, above average for these
- _____ 62. **Ice B-N Hearts and Flowers compote, loaded with pastels**
- _____ 63. Ice B-N Peacock at Fountain 5" round berry bowl, sparkling color
- _____ 64. **Rare Emerald Green-Imp Scroll Embossed 7" bowl with Hobstar and Tassel back, about three known, this one is fabulous, has teal hues and glows**
- _____ 65. Dark B-N stippled Three Fruits Medallion 8 1/2", spat ftd bowl, scarce and nice
- _____ 66. **Aqua/Vaseline-Imp Lustre Rose 10 3/4" flared, footed fruit bowl, looks for the world like aqua, glows out of this world like Vaseline. Rare color either way, first I've seen**
- _____ 67. G-Fenton Concord 8 3/4" bowl, scarce and nice
- _____ 68. **P-N Peacocks 9" plate, very attractive iridescence**
- _____ 69. Jade Blue stretch-N 11 3/4" centerpiece bowl with returnee rim; this is a beautiful bowl and scarce
- _____ 70. **Ravishing Smoke-Imp Homestead 10 3/8" chop plate, marked IG**
- _____ 71. Scarce W-Imp Chrysanthemum 10 3/8" chop plate, marked IG, only made for one year
- _____ 72. **Cobalt B-Imp Windmill 9 1/4" plate, marked IG, with 2 paper labels**
- _____ 73. Electric P-Imp Windmill 7 3/4" bowl
- _____ 74. **G-Four Flowers Variant 8" round bowl, delightful**
- _____ 75. P-Imp Scroll Embossed 7 1/4" bowl, with scarce Hobstar and Tassel bowl, nice
- _____ 76. **P-N Raspberry water pitcher, electric hues all the way around**
- _____ 77. Teal-Westmoreland Scales 6" plate
- _____ 78. **M-Imp Smooth Panels 17" funeral vase, 5 1/2" base**
- _____ 79. M-Imp Smooth Panels 17" funeral vase, 5 1/2" base, the twin towers!!
- _____ 80. **Smoke-Bavarian Hobstar and Fan 9 1/2" vase, 6 3/4" opening, electric purple iridescence, undetermined age**
- _____ 81. M-Moonprint 9 1/2" trumpet vase, scarce pattern and shape
- _____ 82. **M-Rose Garden 7 1/4" letter vase**
- _____ 83. M-Rose Garden 5 1/4" letter vase
- _____ 84. **P-Imp Grape 9" bowl, electric**
- _____ 85. M Flash-soda glass with metal holder, quite unusual
- _____ 86. **Vas-Dugan Venetian art glass 4 1/2" vase, with two-sided pulled up top, a must see**
- _____ 87. Lav-Dugan Venetian art glass 6" pinched vase
- _____ 88. **Tangerine Stretch-Fenton Dolphin fan vase, scarce color**
- _____ 89. Light blue stretch-Cupped rim 9" bowl with yellow stripes and decorated rim, never seen a stretch bowl like this one
- _____ 90. **Imperial Free Hand art glass 6 3/4" vase, white base color with blue exterior and marigold throat**
- _____ 91. P-Imp Jewels 6 1/4" low bowl with turned in rim, Iron Cross Mark
- _____ 92. **Deep B-Miniature 2 1/2" cuspidor vase, chip near pontil**
- _____ 93. BA-Imperial Jewels 10", flared, centerpiece bowl, a beauty
- _____ 94. **Marigold-Imp Jewels 5 3/4" hyacinth vase, Iron Cross Mark, pretty**
- _____ 95. P-Imp Jewels 5 1/2" bulbous vase, Iron Cross Mark
- _____ 96. **Grecian Gold stretch-Fenton #260 compote, 7" flared top**
- _____ 97. P-N Butterfly square bonbon, plain back
- _____ 98. **A-Fenton Birds and Cherries compote, great detail and color**
- _____ 99. P-N Strawberry 8 1/2" plate, BW exterior
- _____ 100. **AO-N stippled Three Fruits 8 3/4" bowl, scarce color and nice**
- _____ 101. M-Fenton Stream of Hearts compote
- _____ 102. **A-Fenton Grape and Cable 8", spat ftd bowl, super pretty**

- _____ 103. G-N Grape and Cable Leaf Center Vt. 7 ½" bowl, loaded with color
- _____ 104. **M-N Grape and Cable powder jar with lid, hot pinks galore**
- _____ 105. W-N Grape and Cable cup and saucer
- _____ 106. **P-N Grape and Cable cologne bottle with stopper, pretty**
- _____ 107. P-N Grape and Cable candlelamp, complete
- _____ 108. **M-N Grape and Cable candlelamp, complete**
- _____ 109. P-N Grape and Cable sweetmeat whimsey
- _____ 110. **P-N Grape and Cable cracker jar with lid**
- _____ 111. P-N Grape and Cable sweetmeat with lid
- _____ 112. **G-N Grape and Cable candlesticks, 2 times \$**
- _____ 113. P-N Grape and Cable 10 ½" master ICS bowl, nice
- _____ 114. **Excellent M-N Grape and Cable 10 ¼" master ICS bowl, lots of blues**
- _____ 115. G-N Blackberry compote, BW back
- _____ 116. **P-N Raspberry milk pitcher, luscious color**
- _____ 117. Multi Electric P-N Good Luck 8 ½" bowl, very scarce plain back
- _____ 118. **Deep P-N Good Luck 9" bowl, electric highlights**
- _____ 119. P-N Good Luck Vt. 9" plate, BW exterior, attractive
- _____ 120. **M-N stippled Good Luck PCE bowl, awash with pinks and blues**
- _____ 121. B-Fenton Holly 9 ½", 3 in 1 edge bowl, pretty
- _____ 122. **Ice B-N Hearts and Flowers 9" bowl, super blues**
- _____ 123. M-N Hearts and Flowers 8 ¾" bowl, nice
- _____ 124. **Electric B-N stippled Three Fruits 9" plate**
- _____ 125. A-N Grape and Cable 5 ¾" berry bowl
- _____ 126. **M-N stippled Three Fruits 8 ¾" bowl, very nice**
- _____ 127. B-Fenton Leaf Chain 7" bowl, silver satin finish
- _____ 128. **W-N Wishbone 8 ½" footed bowl, super pretty**
- _____ 129. M-Imp Star and File celery vase, neat item
- _____ 130. **W-N Poppy Show 8 ½" bowl, frosty**
- _____ 131. M-Imp 474 milk pitcher
- _____ 132. **W-N Rose Show 9 ½" plate, purples, blues, golds**
- _____ 133. B-Enamel decorated Cherries and Little Flowers pitcher, odd blue
- _____ 134. **Beautiful M-Dugan Many Fruits punch bowl base (or compote, if you prefer)**
- _____ 135. G-Mlbg Diamonds water pitcher, wow is this one pretty!
- _____ 136. **G-Mlbg Diamonds tumblers, 2 times \$, both nice**
- _____ 137. P-N Oriental Poppy tumbler, colorful
- _____ 138. **G-N Singing Birds tumbler, pretty**
- _____ 139. G-N Acorn Burrs tumbler, nice
- _____ 140. **Rich M-N Acorn Burrs tumbler**
- _____ 141. W-Dugan Beaded Shell mug with Souvenir of Pen-Mar, Md" lettered along rim, very scarce color, too.
- _____ 142. **M-Flute tumbler with rayed base**
- _____ 143. M-Dugan Vineyard tumblers, pretty, 2 times \$
- _____ 144. **M-Cut Cosmos tumbler, scarce, may be Millersburg**
- _____ 145. Electric P-Imp Grape tumbler
- _____ 146. **G-Imp Grape tumbler, attractive**
- _____ 147. Electric P-Imp Lustre Rose tumbler
- _____ 148. **Pretty M-Fenton Captive Rose compote**
- _____ 149. M Flash-Golden Wedding 1/10 pint whiskey bottle, no lid
- _____ 150. **Champagne-N Grape and Cable Vt. 8 ¾" bowl, brilliant pastels**
- _____ 151. P-Pastel Swan master salt
- _____ 152. **Cherry Red-Fenton Holly ruffled hat**
- _____ 153. B-N stippled Three Fruits PCE bowl, simply beautiful
- _____ 154. **Scarce A-Fenton Holly 9 ½" plate, nice eye appeal**
- _____ 155. P-N Tornado 6 ¼" vase, lovely iridescence
- _____ 156. **B-Fenton Holly 9", 3 in 1 bowl, lovely fuschias on this bowl**
- _____ 157. P-Fenton Dragon and Lotus 8 ½", 3 in 1 bowl
- _____ 158. **G-Fenton Thistle 8" ICS bowl, super nice for this pattern**
- _____ 159. A-Fenton Thistle 9" bowl
- _____ 160. **Powder B-Fenton Lions 7" bowl, scarce color, very detailed**
- _____ 161. M-Fenton Lions 6 ¾" ICS bowl
- _____ 162. **M-Fenton Horse Medallion 8" plate, colorful**
- _____ 163. M-Fenton Horse Medallion 8", footed, JIP bowl, dark and nice
- _____ 164. **P-N Grape and Cable 9", spat ftd plate**
- _____ 165. P-N Grape and Cable 11" large fruit bowl, always in demand
- _____ 166. **M-Fenton Grape and Cable/Persian Medallion 10" fruit bowl**
- _____ 167. M-Fenton Chrysanthemum/Windmill 9 ½" deep fruit bowl
- _____ 168. **Superb P-N Grape and Cable centerpiece bowl with turned in tips**
- _____ 169. G-N Grape and Cable small size 8 pc punch set, well matched set
- _____ 170. **Pearlized Custard-N banded Grape and Cable banana bowl, very scarce**
- _____ 171. Dark M-Imp Crabclaw 7 pc water set
- _____ 172. **Beautiful G-N Singing Birds water pitcher**
- _____ 173. G-N Singing Birds tumbler, equally nice
- _____ 174. **Lovely M-N Singing Birds water pitcher, great color and detail**
- _____ 175. M-N Singing Birds tumbler, flashy!
- _____ 176. **M-Fenton Butterfly and Berry water pitcher, nice**
- _____ 177. M-Fenton Butterfly and Berry tumbler
- _____ 178. **M-Diamond Cut Shields 7 pc water set, not often seen as a set**
- _____ 179. Amber-Imp Fieldflower water pitcher, tough color
- _____ 180. **Pastel M-N Grape and Gothic Arches 5 pc water set, all pieces are nice**
- _____ 181. M-N Grape and Cable Leaf Center Vt. 8" single handgrip plate
- _____ 182. **A-Fenton Orange Tree 9" low, low ICS bowl, attractive**
- _____ 183. G-N Grape and Cable 9" plate, lovely hues
- _____ 184. **A-Fenton Captive Rose 9 3/8" plate, fine example**
- _____ 185. A-N Wishbone 8 ½" footed bowl
- _____ 186. **B-N stippled Grape and Cable Vt. PCE bowl, nice piece**
- _____ 187. Red with amberina base-Imp Double Scroll candlesticks, pair
- _____ 188. **M-Orange Tree 8 pc punch set, bowl has round, flared top, very colorful set**
- _____ 189. Cherry Red-Fenton Dragon and Lotus 9" bowl, great item
- _____ 190. **Pastel M-N Thin Rib 12 ½" mid-size vase**
- _____ 191. P-Dugan Cherries 6 ¾" bowl
- _____ 192. **B-April Showers 11 ¼" vase**
- _____ 193. Rare Smoke-Fenton Grape and Cable 7 ¾" ball footed bowl
- _____ 194. **Vas Opal-Fenton Dragon and Lotus 7 ½", spat ftd bowl, desirable color**
- _____ 195. A-Fenton Dragon and Lotus 8 ¾", 3 in 1 bowl
- _____ 196. **M-Fenton Coral 8 ½" bowl, scarce pattern and very pretty**
- _____ 197. B-Fenton Holly 9 ¾" plate, radium purple and gold finish
- _____ 198. **Pumpkin M-Fenton Holly 9 ¾" plate, a real looker!**
- _____ 199. B-Fenton Persian Medallion 9 1/8" plate
- _____ 200. **Rare G-Fenton Thistle 9 ¼" plate, unbelievable color, large chip on marie**
- _____ 201. M-Memphis fruit bowl and base with six cups, beautiful set
- _____ 202. **Electric P-Imp Heavy Grape 7 pc punch set, great combination of rarity and beauty**
- _____ 203. Gorgeous M-Imp Heavy Grape 8 pc punch set, another dandy
- _____ 204. **W-Dugan Persian Garden ruffled fruit bowl and base**
- _____ 205. Alluring B-Fenton Orange Tree 8 ½" ICS bowl, super
- _____ 206. **Scarce M-N Greek Key 9" plate**
- _____ 207. B-Persian Medallion 8 ½" deep round bowl, unusual shape and pretty

- _____ 208. P-N Peacock at Urn 10 ½" chop plate, quite scarce
 _____ 209. B-Fenton Stag and Holly 10" ICS, footed bowl, great example
 _____ 210. M-N stippled Three Fruits 9 ¼" plate, exquisite
 _____ 211. Beautiful M-N Three Fruits 9" plate
 _____ 212. M-N Strawberry 9" plate, peach opal tips!
 _____ 213. M-Kittens cup and saucer
 _____ 214. M-Kittens 2-sides up plate
 _____ 215. M-Kittens 4" plate
 _____ 216. G-Wreath of Roses/Persian Medallion interior punch cups, 4 times \$
 _____ 217. Marigold over Moonstone-Drapery lamp shade, sweet
 _____ 218. P-Dugan Cherries 6 ½", CRE plate, nice one
 _____ 219. BA-Flying Bat hatpin, striking!
 _____ 220. BA-vintage hatpin, not iridized, looks hand decorated
 _____ 221. Red-HOACGA 1981 candlelamp, complete
 _____ 222. B-Dorothy Taylor 3 ½" Kittens bowl, marked Encore K.C. Mo. 1993"
 _____ 223. AO-Dorothy Taylor Kittens handled basket, great butterscotch overlay
 _____ 224. M-Dugan Fisherman's mug
 _____ 225. A-Dugan Beaded Shell mug
 _____ 226. P-N Dandelion mug, nice
 _____ 227. W-N round Bushel basket, colorful
 _____ 228. Cherry Red-Fenton Holly 6 ½" ruffled hat
 _____ 229. P-Imp Grape decanter with stopper
 _____ 230. G-Imp Grape decanter with stopper, marked IG
 _____ 231. M-Imp Grape decanter with stopper
 _____ 232. B-Butterfly and Berry large rosebowl, gorgeous and rare
 _____ 233. Dark M-N Thin Rib 14 ½" mid-size vase
 _____ 234. W-Dugan Fanciful 9 ½" low ruffled bowl/plate
 _____ 235. A-N Stippled Rays 9 ¼" bowl, pretty
 _____ 236. Electric P-Imp Heavy Grape 10" bowl, outstanding
 _____ 237. M-N Strawberry PCE bowl, attractive hues
 _____ 238. M-Dugan Weeping Cherries 8 ¼" dome base bowl, scarce item
 _____ 239. P-N Grape and Cable 7 pc water set, well matched
 _____ 240. P-N Grape and Cable tankard water pitcher, scarce and nice
 _____ 241. M-Imp Grape 9 ¼" plate, nice
 _____ 242. Lav-Imp Pansy 9 ½" low ruffled bowl, very nice
 _____ 243. M-Imp Hattie 8" deep, round bowl
 _____ 244. M-Fenton Concord 8 ½", 3 in 1 bowl, scarce and nice
 _____ 245. M-N Strawberry 8 ¾" bowl, pretty
 _____ 246. M-N Strawberry 8 ¾" plate, colorful
 _____ 247. M-Fenton Persian Medallion large crimped edge compote
 _____ 248. M-N Wishbone 8 ½" footed bowl, pastel colors
 _____ 249. Scarce A-Mlbg Swirled Hobnail rosebowl
 _____ 250. P-Mlbg Hobnail rosebowl
 _____ 251. Dark M-Mlbg Hobnail rosebowl
 _____ 252. M-Mlbg Whirling Leaves 9 ¾" bowl
 _____ 253. Rare M-Mlbg Holly Sprig 6" tri-corner compote
 _____ 254. Blue Opal-N Hearts and Flowers compote, beautiful
 _____ 255. M-Dugan Daisy Web 6" tri-corner crimped edge hat, super pastels, seldom offered
 _____ 256. Blue Opal-N Drapery 7 ¼" vase, very scarce and gorgeous
 _____ 257. AO-N Drapery rosebowl, nice butterscotch overlay

WATCH:  **Web Site:** www.AWK-SHN.com

258. AO-N Leaf and Beads rosebowl, butterscotch overlay
 259. Ice G-N Corn vase, stalk base
 260. Vas Opal-Fenton Dragon and Lotus 8 ¾", 3 in 1 edge bowl
 261. P-Imp Hobstar butter dish with lid, mint
 262. Super B-Fenton Blackberry Block water pitcher
 263. G-N Raspberry water pitcher, nice
 264. P-N Raspberry 7 pc water set
 265. Rich M-Fenton Apple Tree water pitcher
 266. BA-Dugan Maple Leaf water pitcher, nice
 267. M-N Acorn Burrs water pitcher, a good one
 268. Teal-Fenton Heavy Iris 5 pc tankard water set, outstanding, signed Fenton
 269. Red-Fenton Atlantis jardinière
 270. Pink Opal-Fenton Atlantis jardinière, marked FGS 2001
 271. Rosalene-Fenton Atlantis jardinière, not iridized
 272. W-Fenton Atlantis jardinière, super
 273. Electric B-N Peacocks 9 ¼" plate, great color on birds
 274. M-N Peacocks 9" plate, colorful
 275. Stunning W-N Peacock at Urn 10" ICS bowl
 276. P-N Peacock at Urn 9 ¾" ICS master bowl, collector favorite
 277. Electric B-N Good Luck 8 ¾" bowl
 278. Pumpkin M-N Good Luck PCE bowl, hot pinks
 279. Deep P-N Good Luck PCE bowl, electric I guess
 280. G-N Good Luck PCE bowl, interesting iridescence
 281. G-Fenton Concord 8 ½" bowl, scarce color and pattern
 282. M-Fenton Concord 9" plate, tough piece to find
 283. G-N stippled Grape and Cable Vt. 9" plate with Old Rose Distillery advertising on reverse
 284. M-Fenton Stag and Holly 9 ¼" spat ftd plate, a dandy
 285. G-N Good Luck 9" bowl, emerald green highlights
 286. M-N stippled Good Luck 9 ½" plate, gorgeous, gorgeous, gorgeous
 287. Superb M-N Good Luck 9" bowl
 288. M-Fenton Cherry Chain 10 ¾" chop plate, very scarce and nice
 289. M-N Grape and Cable cologne bottle with stopper, radium and pretty
 290. P-N Grape and cable cologne bottle with stopper, nice
 291. Deep B-N Grape and Cable banded, stippled banana boat, beautiful piece
 292. Ice B-N Wishbone 8 ½" footed bowl, tough one
 293. Electric G-N Grape and Cable 9" plate
 294. G-N stippled Grape and Cable 9" plate, pretty
 295. Stunning G-N Sunflower 8 ½" spat ftd bowl
 296. G-N Strawberry PCE bowl, some would call this emerald
 297. G-N Three Fruits 8 ½" bowl, just loaded with blue iridescence
 298. Electric G-N Three Fruits PCE bowl
 299. Lavender/Horehound-N Three Fruits 9" bowl, scarce color
 300. Great B-Fenton Peter Rabbit 9 3/8" plate, top notch item for scarcity and color
 301. Cobalt B-Fenton Dragon and Lotus 9" bowl
 302. Blue-Fenton Orange Tree 8" ICS bowl, radium finish
 303. M-Dugan Four Flowers 8 ½" deep, round bowl, Soda Gold exterior
 304. Pumpkin M-N round Bushel basket
 305. B-N round Bushel basket
 306. Deep Red-Fenton Orange Tree shaving mug, nice
 307. P-N Singing Birds mug, pretty
 308. Electric B-N Singing Birds mug
 309. M-N Three Fruits Medallion dome base nut bowl
 310. W-Dugan Fanciful 9" low ruffled bowl, nice
 311. Scarce M-Split Diamond butter dish with lid
 312. P-Dugan Cherries 9 ½" bowl, Jeweled Heart exterior, a dandy
 313. Nice M-Fenton Milady 7 pc tankard water set, a great find

314. G-Fenton Milady tankard water pitcher, marked Fenton/Bill Fenton
 315. Sweet G-Fenton Paneled Dandelion 7 pc tankard water set
 316. Lovely A-Fenton Paneled Dandelion 7 pc tankard water set
 317. AO-N Peacocks 9" bowl, very nice
 318. G-N Peacocks 8 ½" bowl, nifty purplish iridescence on the interior
 319. M-N stippled Peacocks 9" plate, superb pastels
 320. M-N Peacocks 8 ½" bowl, BW back
 321. Electric B-N Peacocks 9" plate
 322. Fabulous Pastel-Fenton Leaf Chain 9 ½" plate, glass looks pink, whatever color it is, it's super
 323. Electric M-Fenton Peacock at Urn 9 ½" plate
 324. W-Fenton Peacock at Urn 9 3/8" plate, loaded with blues and purples
 325. W-Fenton Peacock at Urn 8 ½" bowl
 326. P-N Peacock at Urn 5 ¾" ICS bowl
 327. Electric P-Imp Grape carafe, hard to imagine one better
 328. G-N Thin Rib 13 ¼" mid-size vase, great for green
 329. Cranberry Opal-Singleton Bailey Poppy Show JIP vase
 330. Green Opal-Singleton Bailey handled basket with cobalt handle, 9" tall, 7" wide and the basket glows!
 331. Green Opal-Fenton Inverted Strawberry JIP stemmed whimsy cuspidor, also glows
 332. Green Opal-Fenton Inverted Strawberry stemmed cuspidor, it too glows
 333. Vas Opal-HOACGA 2001 hatpin holder
 334. Red-HOACGA 1977 hatpin holder
 335. Red-HOACGA 1978 corn vase
 336. Red Opal-Levay Good Luck 10 ¾" elephants foot vase, signed Gary Levi
 337. Marigold-Fenton handpainted and artist signed 6 ½" bulbous pitcher
 338. PO-HOACGA 2009 Dancing Lady stemmed 6 ¾" vase
 339. Blue with red and white trim-Fenton Lions 1984 ICGA rosebowl, owner bought it as one of a kind presentation piece for Dr. Jack
 340. B-ACGA 1983 Seacoast creamer and sugar, one of a kind set
 341. Sea Mist Green opaque-ACGA 1998 Seacoast cuspidor
 342. Peach Opal-ACGA 1982 Seacoast cuspidor
 343. Red-CCGA 1993 hand decorated, artist signed cuspidor
 344. Burmese-Singleton Bailey Farmyard 9 ½" crimped edge brides basket, very limited production, in silver plated Victorian holder
 345. Vas Opal-LeVay hand decorated Pony bowl, marked 1 of 4, 2004, Gary Levi
 346. Art Glass four lily epergne, 13" with four inserts, in metal frame, super
 347. M Flash-Golden Wedding pint whiskey bottle, full labels and cap
 348. M Flash-New England Wine Company 10" quart bottle
 349. M Flash-Continental Distilling Corporation quart bottle with lid
 350. M Flash-Canada Dry soda bottle with scarce original paper label

Call Today To Sell Your Fine Items

660-882-5292 Day • 660-882-5283 Evening

1 Mile North of I-70 on Hwy. 5, Exit 101

25TH SILVER ANNIVERSARY CA

OPEN TO T

Saturday - January 09, 2016

ADDITIONAL

Friday - January 08, 2016

Auction

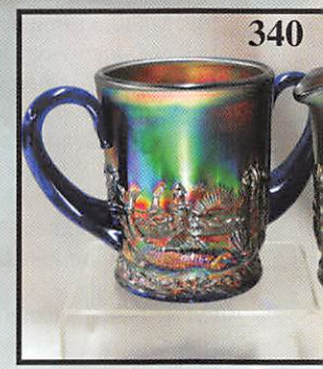
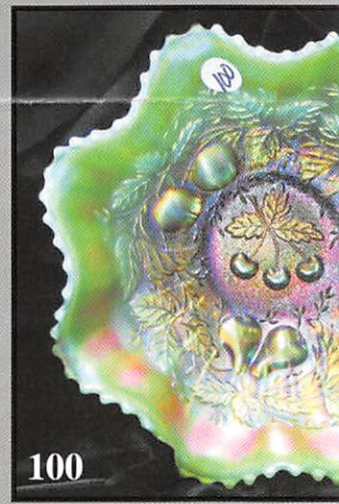
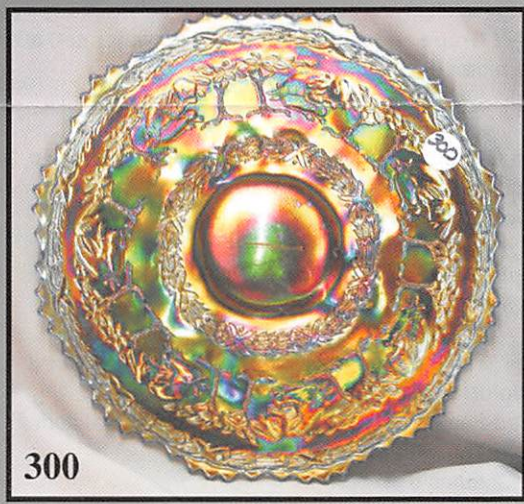
At The Mickey Reid

1440 Ashley Road, Boonville

One Mile N. of I-70 on Hwy 5 EXIT 101

Smoke Free, Climate Co

AUCTION Z



CARNIVAL GLASS EXTRAVAGANZA

THE PUBLIC

at 9:00 am (Preview: 7:30 am)

PREVIEW DATE

5 - 12:00 pm to 5:00 pm

Location

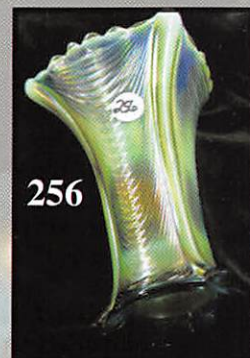
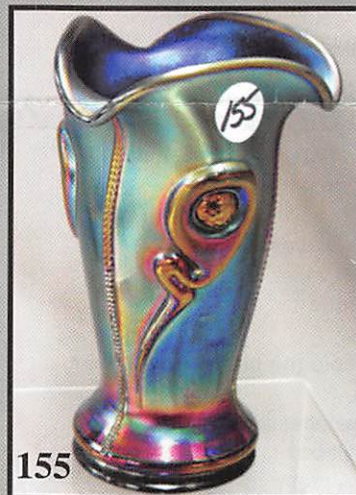
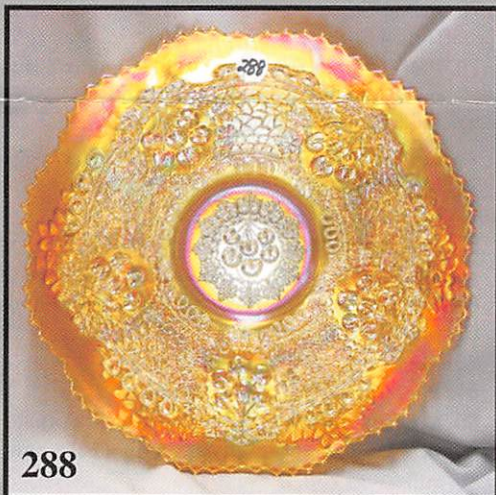
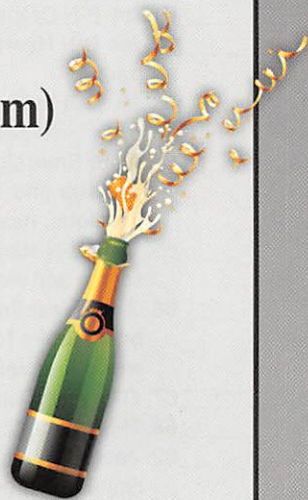
el Auction Gallery

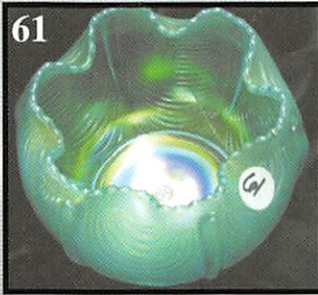
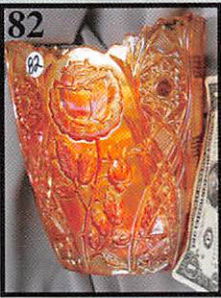
ille, Missouri 65223 USA

20 Miles West of Columbia, MO on I-70

ntrolled Auction Center

P ID #30210





☛ **Make Reservations EARLY at one of these local motels:**
Days Inn: 660-882-8624
Comfort Inn: 660-882-5317
Super 8: 660-882-2900
Holiday Inn: 660-882-6882

Boonville has Heritage Days and Class Reunions In June
Mickey Reichel Auction Center

1 Mile North of I-70 on Hwy. 5, Exit 101, Boonville, Missouri, 20 Miles West of Columbia, MO on I-70



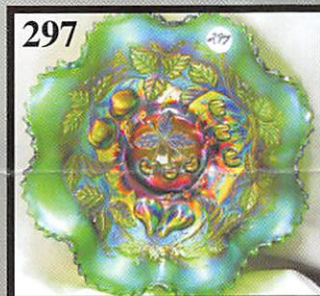
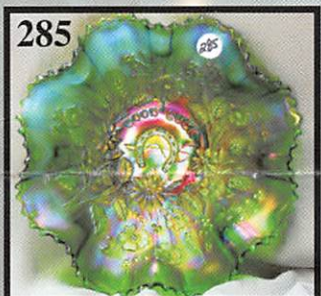
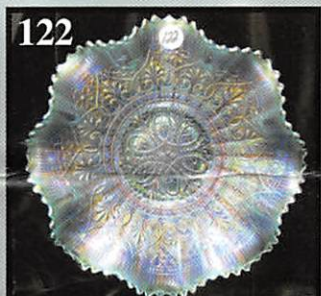
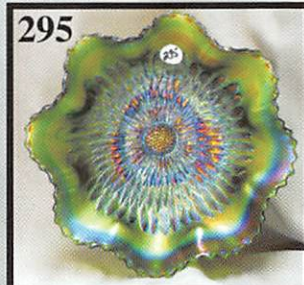
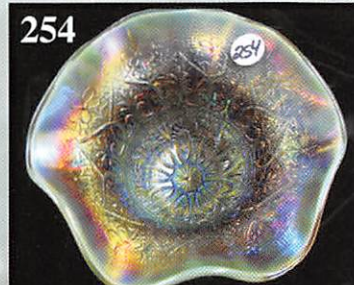
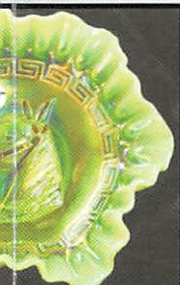
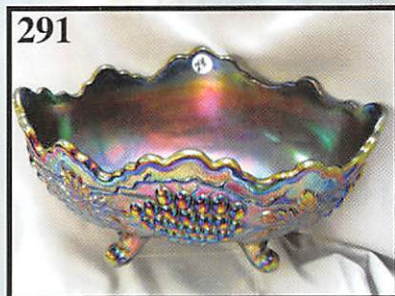
TERMS: Cash or Good Check, VISA and MasterCard accepted.



5% Clerking Fee on all purchases except for payment of cash or check.
 Proper I.D. required.



***** No return on any items once (No Exc**



★★★NO BUYERS PREMIUM★★★

ABSENTEE BID POLICY:

PLEASE NOTE: There is a \$6 handling charge for each successful bid which will be added to the selling price for all write-in bids. This is in addition to the cost of postage, insurance and packing. Your write-in bid will be entered just as if you are present and bidding. Successful bidders will be notified in 1 to 3 days by the auctioneer (so be sure to include your phone number). Direct mail bids to Auctioneer Mickey Reichel, 18350 Hunters Ridge Ct., Boonville, MO 65233-2971. Terms: Cash or Check accepted with proper I.D. and Social Security Number and References. Announcements made day of the auction supersede all printed material. Not Responsible for Accidents or Sold Items. Call in Bids before Auction Welcome!

Call for additional information: 660-882-5292 days or 660-537-5200 evenings before 9:00 p.m.

FAX: 660-882-5292

(evening hours start FAX transmission after beep)

E-mail: mreichel@AWK-SHN.com

Web Site: www.awk-shn.com

they leave the Auction Center * * *
(options)

SEE REVERSE FOR DETAILS