

1. M-Fenton Holly ruffled hat
2. **B-Fenton Holly ruffled hat**
3. M-Fenton Holly ruffled hat
4. **M-Fenton Holly 6" square hat**
5. M-Fenton 2-row O.E. 5" ruffled basket
6. **M-Fenton 2-row O.E. 6" 2 sides up basket**
7. M-Fenton 2-row O.E. 6" ruffled basket
8. **B-Fenton 2-row O.E. 5 1/2" ruffled basket**
9. M-Fenton Blackberry Open Edge 5 1/2" basket
10. **M-Fenton Blackberry Open Edge 7" basket**
11. M-Fenton Holly 6 1/4" square hat
12. **G-Fenton Blackberry Open Edge 5 3/4" basket, unusual color**
13. A-Fenton Blackberry Open Edge 5 1/2" basket, another tough color
14. **Lavender w/ heavy marigold overlay-Fenton Blackberry Spray 7", JIP hat, pretty**
15. M-Fenton Blackberry Spray 5 3/4", JIP hat
16. **Deep B-Fenton Blackberry Spray 6 1/2", JIP hat**
17. A-N Grape and Cable 9" plate, pretty on both sides
18. **G-Fenton Blackberry Banded 6" square hat, scarce in green**
19. M-Fenton Flowering Dill ruffled hat
20. **B-Fenton Flowering Dill ruffled hat**
21. M-Fenton Holly 9 1/2" plate, vibrant color
22. **G-Fenton Holly 9 5/8" plate, rainbow type iridescence**
23. Pale M-Fenton Holly 9 3/4" plate
24. **A-Fenton Holly 9 3/4" plate**
25. B-Fenton Holly 9 1/2" plate
26. **W-Fenton Holly 9 1/2" plate, gorgeous, stretchy, magnificent color**
27. M-Floral and Grape tumbler
28. **Scarce W-Floral and Grape tumbler**
29. B-Floral and Grape tumbler
30. **A-Fluffy Peacock tumbler, nice**
31. Super M-Fluffy Peacock tumbler
32. **G-Fluffy Peacock tumbler**
33. B-Fluffy Peacock tumbler, surprisingly tough color
34. **Scarce W-Lattice and Grape tumbler**
35. Pumpkin M-Lattice and Grape tumbler
36. **B-Lattice and Grape tumbler**
37. Light B-Lattice and Grape tumbler
38. **M-Fenton Milady tumbler, nice**
39. B-Fenton Milady tumbler
40. **A-Dugan Lattice and Daisy tumbler**
41. M-Dugan Lattice and Daisy tumbler
42. **Superb M-Fenton Fentonia tumbler**
43. B-Fenton Fentonia tumbler
44. **M-Ten Mums tumbler, pretty**
45. B-Ten Mums tumbler, tiny flake on base rim
46. **M-Fenton Apple Tree tumbler**
47. B-Fenton Apple Tree tumbler, golden iridescence
48. **W-Orange Tree tumbler, scarce color**
49. B-Orange Tree tumbler
50. **M-Orange Tree tumbler, above average**
51. M-Orange Tree Orchard tumbler
52. **Scarce W-Orange Tree Orchard tumbler**
53. Lovely B-Orange Tree Orchard tumbler
54. **B-Orange Tree Scroll tumbler**
55. Rich M-Imp Grape tumbler
56. **G-Imp Fieldflower tumbler, neat lime tint and a faint glow**
57. P-Imp Fieldflower tumbler
58. **Deep M-Imp Fieldflower tumbler, looks for the world like amber**
59. M-Imp File tumbler
60. **M with Blue trim-"Halloween" 4 1/4" tumbler, rare, from Don Moore collection**
61. Sapphire stretch-N Concave Diamonds tumbler
62. **M-Fenton Scale Band tumbler, not often seen**
63. P-Singleton Bailey Poppy Show ruffled vase, beautiful, limited editions on all these Singleton Bailey vases
64. **Cranberry Opal-Singleton Bailey Poppy Show ruffled vase**
65. Celeste B-Singleton Bailey Poppy Show ruffled vase
66. **Ice Blue Opaline-Singleton Bailey Poppy Show ruffled vase**
67. Topaz Opal-Singleton Bailey Poppy Show ruffled vase
68. **Topaz Opaline-Singleton Bailey Poppy Show ruffled vase**
69. Sea Mist Green opal-Singleton Bailey Poppy Show ruffled vase
70. **Cranberry Opal-Singleton Bailey Poppy Show JIP vase**
71. B-Singleton Bailey Poppy Show JIP vase
72. **Burmese-Singleton Bailey Poppy Show JIP vase**
73. G-N Grape and Cable PCE bowl, very nice
74. **P-N Fine Cut and Roses rosebowl, plain interior, pretty**
75. M-N Beaded Cable rosebowl, Rayed interior
76. **P-N Leaf and Beads rosebowl**
77. B-N Leaf and Beads rosebowl
78. **G-N Daisy and Plume footed rosebowl**
79. M-N Daisy and Plume stemmed rosebowl
80. **M-N Grape Leaves 9", 3 in 1 bowl, extra nice example**
81. A-N Grape Leaves 9" bowl, great eye appeal
82. **P-N Wishbone 8 1/2" footed bowl**
83. P-Stork in Rushes punch cups, 6 times \$
84. **M-Fenton Horse Medallion rosebowl**
85. M-Beaded Shell creamer
86. **Super G-Fenton Horse Medallion 7", footed bowl**
87. A-Dugan Grape Delight nut bowl, pretty
88. **B-Dugan Grape Delight nut bowl, also nice**
89. P-N Good Luck 8 3/4" bowl, BW back
90. **A-Fenton Little Flowers 9" flared bowl, nicer than these usually come**
91. P-N Grape and Cable bonbon
92. **B-Fenton Pine Cone 5 1/2" ICS bowl, a beauty**
93. M-N Good Luck Vt. 8 3/4" bowl, pastel surfaces
94. **B-N stippled Grape and Cable PCE bowl, less frequently seen stippled**
95. M-Fenton Little Fishes 8 3/4" ICS bowl, this one is a dandy
96. **W-N Peacocks 8 3/4" plate**
97. G-Fenton Birds and Cherries square bonbon, collector favorite
98. **Deep B-Dugan Windflower 9" bowl**
99. Stunning M-Fenton Butterfly and Berry 9 1/2" master berry bowl
100. **Scarce A-N Basket of Roses square bonbon**
101. Deep M-Fenton Two Flowers 10" footed bowl
102. **M-Fenton Two Flowers 9", ICS, footed bowl**
103. B-Fenton Butterfly and Berry 9 1/4" master berry bowl, beautiful inside and out
104. **M-Fenton Vintage 9" CRE bowl, scarce with this edge treatment, especially for this size**
105. G-Fenton Vintage 8 1/4", 3 in 1 bowl
106. **A-Fenton Vintage 8" CRE bowl, desirable shape**
107. M-Fenton Butterfly and Berry 5" round sauce bowls, 6 times \$
108. **P-N Grape and Cable with Thumbprint 5 piece berry set**
109. M-Fenton Two Flowers 9" footed fruit bowl
110. **B-Fenton Chrysanthemum/Windmill 9" footed fruit bowl, here's a nice one**
111. M-Fenton Chrysanthemum/Windmill 10 1/4" footed fruit bowl
112. **Dark M-Fenton Stag and Holly 10 1/4" ball footed bowl, delightful to look at**
113. M-Fenton Stag and Holly 8", spat ftd bowl
114. **P-N Grape and Cable 10 3/4" footed fruit bowl**
115. M-N Grape and Cable 11 1/4" master berry bowl
116. **M-Fenton Panther 9 1/4" master berry bowl, very pretty**
117. M-Fenton Orange Tree footed fruit bowl
118. **G-Fenton Stippled Rays 9", 3 in 1 bowl**
119. G-N Sunflower 8", spat ftd bowl
120. **M-Fenton Water Lily 10" footed bowl**
121. PO-Dugan Folding Fan 7" banana bowl
122. **Deep A-N Grape and Cable 9" spat ftd plate**
123. Electric P-Imp Diamond Ring 5 1/4" bowl
124. **Aqua-Westmoreland Pearly Dots 8 1/4" bowl**
125. PO-Dugan Holly and Berry 8" bowl
126. **M-Dugan Garden Path Vt. 9" flared bowl, Soda Gold exterior**
127. P-Dugan Beaded Stork in Rushes 9 3/4", deep, round fruit bowl
128. **M-Fenton Water Lily 9 1/2" footed bowl, pretty**
129. M-N Acorn Burrs 7 pc berry set, gorgeous interiors
130. **M-Imp Diamond Lace 8 1/2" round, flared bowl, nice**
131. M-Imp Double Dutch 8 3/4" round, flared, footed bowl
132. **Deep Aqua-Fenton Holly goblet shape compote**
133. M-Fenton Holly goblet shape compote
134. **Vas-Fenton Holly compote**
135. Dark A-Fenton Holly compote
136. **Lav-Fenton Holly compote with heavy marigold overlay**
137. B-Fenton Holly compote
138. **Dark G-Fenton Holly compote, uncommon color for these**
139. M-Fenton Holly 2 sides up compote, scarce shape and nice
140. **M-Fenton Holly compote with 3 in 1 crimped top edge**
141. M-Fenton Blackberry Spray compote

142. **A-Fenton Blackberry Spray compote**
 143. M-Fenton Stream of Hearts compote
 144. **G-Fenton Birds and Cherries compote**
 145. Amber-Imp Scroll Embossed small compote
 146. **B-Fenton Scotch Thistle compote with crimped top edge**
 147. M-Dugan Question Marks stemmed bonbon
 148. **M-Fenton Persian Medallion 3 in 1 edge large compote**
 149. B-N Hearts and Flowers compote
 150. **M-Orange Tree compote whimsied from wine glass**
 151. Aqua-Fenton Peacock at Urn compote, pretty
 152. **M-Fenton Peacock at Urn compote**
 153. Vas-Fenton Small Rib spittoon shape vase
 154. **Amber-Fenton Small Rib spittoon shape vase**
 155. G-Compote vase, plain inside
 156. **Honey Amber-Cosmos and Cane 6" flared compote, chip on base**
 157. M-Wreath of Roses stemmed bonbon
 158. **Killer G-Fenton Dragon and Lotus 8 1/2" ICS bowl**
 159. P-Fenton Dragon and Lotus 8" ICS bowl
 160. **Nice M-Fenton Dragon and Lotus 9" bowl**
 161. Cobalt B-Fenton Dragon and Lotus 9" bowl, striking color
 162. **A-Fenton Dragon and Lotus 9" bowl**
 163. M-Fenton Dragon and Lotus 9" bowl, nice pastels
 164. **G-Fenton Dragon and Lotus 7 3/4" spat ftd bowl, intriguing color, factory split on foot**
 165. P-Fenton Dragon and Lotus 8 1/2", 3 in 1 edge bowl
 166. **M-Fenton Dragon and Lotus 9 1/4", 3 in 1 edge bowl**
 167. M-Vintage 8 1/2", 3 in 1 edge bowl
 168. **B-Fenton Ragged Robin 9", 3 in 1 edge bowl, scarce and good looking**
 169. M-Fenton Ragged Robin 8 1/4", 3 in 1 edge bowl
 170. **G-Fenton Thistle 8" ICS bowl**
 171. A-Fenton Thistle 9" bowl
 172. **G-Fenton Thistle 7 3/4" CRE bowl, neat shape**
 173. A-Westmoreland Pillow and Sunburst 7 3/4" bowl
 174. **M-Fenton Grape and Cable 9" spat ftd bowl**
 175. B-Fenton Peacock and Grape 9" bowl, enchanted color
 176. **M-Fenton Peacock and Grape 8 3/4" bowl, nice**
 177. P-Fenton Peacock and Grape 7 1/2" spat ftd bowl, very pretty
 178. **M-Fenton Autumn Acorns 8", 3 in 1 edge bowl**
 179. M-Fenton Vintage fernery
 180. **G-Fenton Acorn 6 3/4" ICS bowl**
 181. M-Fenton Acorn 7 1/2" bowl
 182. **B-Fenton Captive Rose 8 1/4", 3 in 1 edge bowl**
 183. A-Fenton Captive Rose 9" bowl, super nice iridescence
 184. **M-Fenton Holly 9 1/4", 3 in 1 edge bowl, wonderful pastels**
 185. B-Fenton Holly 9", 3 in 1 edge bowl, pretty
 186. **G-Fenton Holly 8 3/4", 3 in 1 edge bowl**
 187. A-Fenton Holly 9", 3 in 1 edge bowl
 188. **Light P-Fenton Holly 8 1/2", 3 in 1 edge bowl**
 189. G-Fenton Holly 8", CRE bowl, scarce shape
 190. **G-Fenton Holly 8 1/4" ICS bowl**
 191. B-Fenton Holly 8 1/2", ICS bowl
 192. **Pretty W-Fenton Holly 9 1/4" bowl**
 193. Great M-Fenton Leaf Chain 7 3/4" plate
 194. **M-Fenton Leaf Chain 7 1/2" plate, very colorful**
 195. B-Fenton Leaf Chain 7 1/4" bowl, uncommon size
 196. **M-Fenton Leaf Chain 8 3/4" bowl**
 197. A-Fenton Orange Tree 8" ICS bowl
 198. **G-Fenton Chrysanthemum/Windmill 9" collar base bowl, tough color**
 199. M-Fenton Peacock at Urn 8 3/4" bowl, attractive
 200. **B-Fenton Peacock at Urn 8 1/2" bowl, deep, delicious iridescence**
 201. M-Fenton Peacock at Urn 7 3/4" ICS bowl, lots of pink highlights
 202. **M-Mlbg Blackberry Wreath 8 1/4" ICS bowl**
 203. G-Mlbg Blackberry Wreath 8" ICS bowl
 204. **P-Mlbg Blackberry Wreath 9" bowl**
 205. G-Mlbg Blackberry Wreath 7 3/4" bowl, super color
 206. **P-Mlbg Blackberry Wreath 5 1/2" ICS sauce bowl, a dandy**
 207. G-Mlbg Blackberry Wreath 6 1/4" bowl
 208. **M-Mlbg Blackberry Wreath 6 1/4" bowl**
 209. A-Mlbg Blackberry Wreath 7 1/4", 3 in 1 edge bowl
 210. **G-Mlbg Blackberry Wreath 6", 3 in 1 edge bowl**
 211. Radium G-Mlbg Whirling Leaves 9 1/2" bowl
 212. **P-Mlbg Whirling Leaves 10" bowl, satin**
 213. Lovely A-Mlbg Holly Whirl 10" bowl
 214. **A-Mlbg Holly Sprig deep bonbon, super nice**
 215. G-Mlbg Holly Whirl card tray shape bonbon
 216. **M-Mlbg Peacock 6" sauce, no bee, no beads**
 217. A-Mlbg Peacock 5 1/2" ICS bowl, no bee, no beads, pretty
 218. **Dazzling G-Mlbg Rays and Ribbons 10" bowl**
 219. G-Mlbg Rosalind 10 1/4" bowl
 220. **P-Mlbg Swirled Hobnail rosebowl, very nice example**
 221. Radium M-Mlbg Boutonniere compote
 222. **M-Mlbg Primrose 9 3/4" bowl, radium**
 223. P-Mlbg Strawberry Wreath 8 1/2" bowl, radium
 224. **M-Mlbg Seaweed 10 1/2", 3 in 1 bowl, outstanding**
 225. M-Fenton Butterflies card tray bonbon
 226. **P-Fenton Butterflies card tray bonbon**
 227. G-Fenton Butterflies card tray bonbon
 228. **A-Fenton Butterflies card tray bonbon**
 229. M-Fenton Butterflies square bonbon
 230. **M-Fenton Butterflies card tray bonbon, fabulous**
 231. M-Vintage card tray bonbon
 232. **B-Vintage square bonbon**
 233. M-Fenton Cherry Circles 9" card tray bonbon
 234. **P-Mlbg Marilyn tumbler, collar base,, nice**
 235. G-Mlbg Marilyn tumbler, collar base, nice
 236. **Radium M-Mlbg Feather and Heart tumbler**
 237. M-Mlbg Gay 90's tumbler, a lovely, rare tumbler
 238. **M-Mlbg Hanging Cherries tumbler**
 239. A-Mlbg Perfection tumbler, another very scarce tumbler
 240. **G-Mlbg Diamonds tumbler**
 241. P-Mlbg Diamonds tumbler
 242. **A-Mlbg Diamonds tumbler**
 243. M-Cut Cosmos tumbler, this pattern is known only in tumblers
 244. **P-Dugan Grapevine Lattice tumbler, marked "Souvenir Bisbee N.D."**
 245. M-N Acorn Burrs tumbler
 246. **G-N Acorn Burrs tumbler, well above average**
 247. Electric P-N Acorn Burrs tumbler, simply stunning
 248. **M-Dugan Jeweled Heart tumbler, pretty**
 249. W-N Peach tumbler with gold trim
 250. **B-N Peach tumbler**
 251. G-N Peacock at Fountain tumbler, quality item
 252. **Lavender Swirl-N Peacock at Fountain tumbler, scarce color**
 253. W-N Peacock at Fountain tumbler, frosty
 254. **Scarce Ice B-N Peacock at Fountain tumbler**
 255. P-N Peacock at Fountain tumbler, electric purple highlights
 256. **Renninger Blue-N Peacock at Fountain tumbler, luscious iridescence**
 257. B-N Peacock at Fountain tumbler
 258. **Ice B-N Grape Arbor tumbler**
 259. W-N Grape Arbor tumbler
 260. **Ice G-N Grape Arbor tumbler, scarce and nice**
 261. B-N Grape Arbor tumbler, sparkling color
 262. **M-N Flute tumbler, scarce**
 263. M-N Oriental Poppy tumblers, 2 times \$
 264. **G-N Wishbone tumbler, tough to find this nice**
 265. P-N Wishbone tumbler
 266. **Rare W-N Wisteria tumbler**
 267. Rare Ice B-N Wisteria tumbler
 268. **P-Imp Flute #2 tumbler, rare, beautiful**
 269. Pumpkin M-Dugan Vineyard tumbler
 270. **M-Poinsettia milk pitcher**
 271. B-Fenton Holly 8 1/2", 3 in 1 edge bowl
 272. **M-Fenton Holly 8 1/4" ICS bowl**
 273. B-Fenton Holly 7 1/2" CRE bowl, nice shape
 274. **P-Dugan Holly and Berry spade shape nappy, pretty**
 275. M-Fenton Grape and Cable/Persian Medallion fruit bowl
 276. **Smoke-Imp Hattie 8 3/4" round, flared bowl**
 277. Brick Red-Fenton Holly 9" bowl, red iridescence on interior
 278. **Cherry Red-Fenton Holly ruffled hat**
 279. Red-Fenton 2 row Open Edge 5 1/2" basket
 280. **Red-Fenton Blackberry Spray 6 1/2" square hat**
 281. Red-Fenton Dragon and Lotus 8 1/2", ICS bowl, always in demand
 282. **Red-Fenton Orange Tree shaving mug**
 283. Cherry Red-Fenton Orange Tree standard mug
 284. **M-Fenton Orange Tree standard mug**
 285. M-Fenton Orange Tree standard mug
 286. **B-N Singing Birds mug**
 287. Scintillating M-N Singing Birds mug, great detail along with great color
 288. **P-Dugan Fisherman's mug**
 289. M-Fenton Peacock Tail 6" hat
 290. **G-Fenton Peacock Tail 6 1/2" hat, with "Arthur F. Odell, Quincy Jeweler" advertising on base**

- _____ 291. B-Fenton Peacock Tail 6" hat
 _____ 292. M-Fenton Two Fruits divided bonbon
 _____ 293. M-Orange Tree powder jar with lid
 _____ 294. M-Imp Hobstar 4 pc table setting
 _____ 295. Smoke-Imp Floral and Optic 8 ¾", cupped rim, footed bowl, thunderous iridescence
 _____ 296. Pastel M-Imp Floral and Optic 9" flared, ftd bowl
 _____ 297. M-Imp Rococo vase
 _____ 298. M-N Thin Rib Jester's Cap 7 ¾" vase
 _____ 299. P-N Thin Rib Jester's Cap 7" vase
 _____ 300. G-N Thin Rib Jester's Cap 8 ¾" vase, all three of these Jester's Cap shapes are very scarce
 _____ 301. M-Kittens round cereal bowl, dark and nice
 _____ 302. M-Kittens 4 ½" four sides up plate, dark
 _____ 303. M-Kittens 4 ½" four sides up plate
 _____ 304. Lav-Kittens 4 ½" six ruffle bowl
 _____ 305. M-Kittens 4 ¼" four sides up bowl, only two sets of kittens
 _____ 306. M-Kittens 2 ¼" tall vase/toothpick holder
 _____ 307. M-Kittens 4 ½" flat plate
 _____ 308. W-Dugan Wreathed Cherry oval sauce bowl, gold trim, lots of blues inside
 _____ 309. B-Dugan Wreathed Cherry oval sauce bowl, scarce color
 _____ 310. Nice P-Dugan Cherries 9 ½" collar base bowl, Jeweled Heart exterior
 _____ 311. P-Dugan Cherries 6 ¾" collar base bowl
 _____ 312. M-N Peacock at Urn 5 ½" ICS bowl, a winner for color
 _____ 313. P-Dugan Question Marks 7" plate, outstanding electric
 _____ 314. P-Dugan Cherries 8", ten ruffle, ball footed bowl
 _____ 315. PO-Dugan Dogwood Sprays 7 ½", ten ruffle dome base bowl, great opal on back
 _____ 316. PO-Dugan Flowers and Frames 8", ten ruffle, dome base bowl
 _____ 317. PO-Dugan Four Flowers 6 ½" plate
 _____ 318. W-Dugan Fanciful 9 ½" bowl, loaded with pastel iridescence
 _____ 319. Ice B-N Poppy pickle dish, scarce and nice

- _____ 320. Very Scarce AO-N Poppy pickle dish, delightful colors
 _____ 321. P-N Poppy pickle dish, multi electric
 _____ 322. Cobalt B-N Poppy pickle dish, electric
 _____ 323. B-N Poppy pickle dish
 _____ 324. W-N Poppy pickle dish, nice pastels
 _____ 325. M-N Poppy pickle dish, covered in colorful iridescence
 _____ 326. G-N Poppy pickle dish
 _____ 327. P-N Grape and Cable sweetmeat compote with lid, above average
 _____ 328. G-Fenton Butterfly and Berry 4 ½" round sauce, green is a tough color
 _____ 329. P-N Strawberry PCE bowl
 _____ 330. P-N Grape and Cable hatpin holder, normal feet
 _____ 331. Deep A-N Grape and Cable 7 ¾" handgrip plate, top notch example
 _____ 332. M-N Singing Birds 4 ¾" round berry dish, big color on a small piece
 _____ 333. M-Fenton Persian Medallion hair receiver
 _____ 334. P-N stippled Fruits and Flowers stemmed bonbon
 _____ 335. B-N Fruits and Flowers bonbon
 _____ 336. A-N Grape and Cable bonbon, 4 sides up, nice
 _____ 337. P-N Grape and Cable Vt. 8 ½" bowl, devastating eye appeal
 _____ 338. Electric G-N Grape and Cable Vt. 8 ¾" bowl
 _____ 339. G-N Three Fruits 8 ¾" bowl
 _____ 340. M-N stippled Three Fruits 9" plate, pastel highlights
 _____ 341. M-N stippled Three Fruits Medallion 8 ¾" spat ftd bowl
 _____ 342. Lav-N Three Fruits Medallion 8 ¾", dome base bowl
 _____ 343. P-N Three Fruits Medallion 8 ¾", spat ftd bowl, multi electric
 _____ 344. M-N Wishbone 8 ½", ball ftd bowl
 _____ 345. P-N Wishbone 8 ½", ball ftd bowl, quite nice
 _____ 346. P-N Star of David and Bows 8 ½", dome base bowl
 _____ 347. P-N Peacocks 8 ¾" bowl, rainbow iridescence
 _____ 348. P-N Peacock at Fountain 4 pc table setting, well matched and desirable set

WATCH:  **Web Site:** www.AWK-SHN.com

349. B-Fenton Orange Tree creamer and spooner, both with chipped feet, sells as one lot
350. **G-N Grape and Cable water pitcher, nice color on this one**
351. B-Fenton Paneled Dandelion tankard water pitcher, a fine piece of carnival glass
352. **M-Imp Octagon 8" water pitcher**
353. W-N Grape Arbor 7 pc water set, frosty
354. **P-N Raspberry 7 pc water set**
355. M-Dugan Vineyard 7 pc water set, sweet
356. **Aqua-Concave Flute 8 1/4" vase**
357. B-Fenton Knotted Beads 9 1/4" vase
358. **Lovely Citrine-N Four Pillars 9 1/4" vase, color top to bottom**
359. B-N Fine Rib 9 3/4" vase, iridescence deluxe
360. **Lot of 7 handmade hatpins, see photo**
361. Lot of 2 HOACGA Good Luck hatpins
362. **Lot of 4 pretty hatpins, includes Dragonfly and Sun's Up, see photo**
363. Lot of 3 carnival glass evening bags
364. **Ice B-N Oriental Poppy tumbler, a beauty**
365. G-N Oriental Poppy tumbler
366. **P-N Oriental Poppy tumbler, electric hues**
367. M-N Oriental Poppy tumbler
368. **W-N Oriental Poppy tumbler**
369. M-N Dandelion tumbler, pretty
370. **P-N Dandelion tumbler, nice**
371. W-N Dandelion tumbler, frosty
372. **G-N Greek Key tumbler, top notch**
373. M-N Greek Key tumbler, superb
374. **P-N Greek Key tumbler, pretty**
375. M-Fenton Rambler Rose tumbler
376. **B-Fenton Rambler Rose tumbler**
377. Scarce Lav-Fenton Rambler Rose tumbler
378. **P-Cambridge Double Star tumbler**
379. G-Cambridge Double Star tumbler
380. **Knockout A-Fenton Butterfly and Berry tumbler**
381. B-Fenton Butterfly and Berry tumblers, 2 times \$
382. **G-Fenton Butterfly and Fern tumbler, factory ground base**
383. B-Fenton Butterfly and Fern tumbler, factory ground base
384. **M-Fenton Butterfly and Fern tumbler, factory ground base**
385. Royal B-Fenton Butterfly and Fern tumbler, collar base
386. **P-Fenton Butterfly and Fern tumbler, collar base**
387. M-Imp Crabclaw tumbler
388. **M Flash-Horseshoe shot glass (tumbler)**
389. M-Dugan Maple Leaf tumbler
390. **P-Dugan Maple Leaf tumbler**
391. G-N Grape and Cable tumbler
392. **B-Enameled Cherries tumblers, 4 times \$**
393. B-Enameled Ground Cherries tumbler
394. **Rare G-Banded Forget-Me-Not enameled tumbler**
395. Dark M-Enameled Banded Iris tumbler
396. **A-Enameled Banded Iris tumbler**
397. Nice M-Beaded Shell tumbler
398. **P-Beaded Shell tumbler**
399. P-Fenton Hobnail tumbler, with Crider iridescence, super, super
400. **W-Wreathed Cherry tumbler, with Crider decoration and it is signed**
401. P-Westmoreland God and Home 5 pc water set
402. **W-Imp Robin 7 pc water set, marked IG**
403. Ice B-Westmoreland Checkerboard water pitcher and two tumblers
404. **Red-Beaded Shell tumblers, 4 times \$, contemporary**
405. Amber-Imp Grape tumblers, 6 times \$, marked IG
406. **W-Imp Robin tumblers, 4 times \$, marked IG**
407. Smoke-Imp Hobnail tumbler, marked IG
408. **AO-Fenton Hobnail tumbler, marked Fenton in oval**
409. G-Gibson Iris tumbler, superb color
410. **Ice G-Singing Birds tumbler, contemporary**
411. Custard with nutmeg-N round Bushel basket
412. **AO-N round Bushel basket**
413. P-N round Bushel basket
414. **Lavender/Horehound-N round Bushel basket**
415. M-N round Bushel basket
416. **Ice G-N round Bushel basket, scarce color**
417. W-N round Bushel basket
418. **Blue-HOACGA 2004 hand decorated, artist signed tumble up/guest set**
419. Lav-HOACGA 1999 Orange Tree wine glass
420. **W-HOACGA 1998 Orange Tree wine glass**

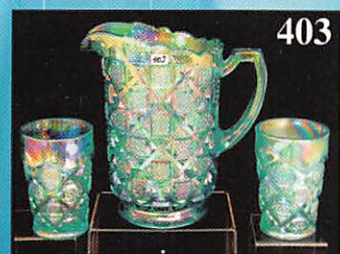
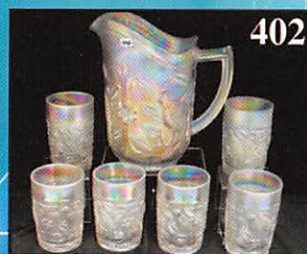
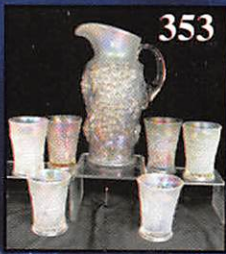
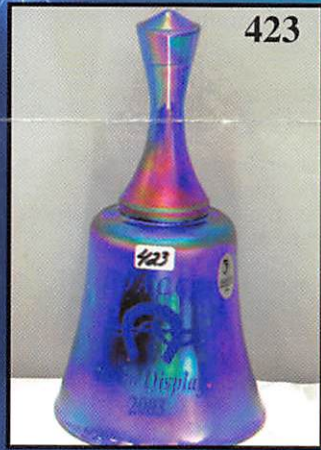
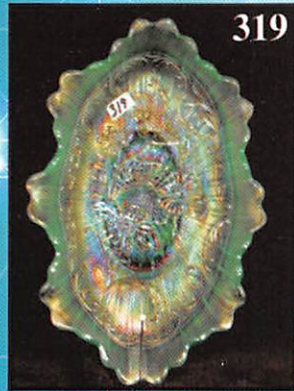
421. Red-HOACGA 1973 6" Good Luck plate
422. **B-HOACGA 2000 Pansy 9" plate**
423. B-HOACGA 2003 room display bell
424. **W-HOACGA 1998 Orange Tree loving cup**
425. R-HOACGA 1979 Orange Tree loving cup
426. **W-HOACGA 1998 Orange Tree loving cup**
427. Topaz Opal-Fenton 1997 10 piece punch set, with original metal base and eight cups
428. **Topaz Opal-2001 HOACGA Orange Tree wine glasses, 2 times \$**
429. B-HOACGA 2000 Orange Tree wine glass
430. **Ice B-HOACGA 1982 Corn vase with whimsied cuspidor top. May be one of a kind.**
431. Ice B-HOACGA 1982 Corn vase
432. **Red-HOACGA 1978 Corn vase**
433. Red-HOACGA 1977 Good Luck hatpin holder
434. **Ice G-HOACGA 1980 triple handle, loving cup whimsey shape from hatpin holder. Likely unique!**
435. W-HOACGA 1980 Good Luck hatpin holder
436. **Vas Opal-HOACGA 2001 Good Luck hatpin holder**
437. Vas Opal-HOACGA 2001 whimsied hatpin holder, hand decorated and artist signed. Also very likely unique.
438. **Emerald G-HOACGA 2002 Good Luck hatpin holder**
439. Vas Opal-HOACGA 2001 Good Luck hatpin holder
440. **P-Westmoreland Westward Ho 1979 Gateway Carnival Glass Club whimsied JIP, CRE compote, WOW!**
441. Vas Opal-ICGA 1983 Frolicking Bears ruffled top cuspidor
442. **Vas Peach Opal (yes, it is!)-ICGA 1983 Frolicking Bears ruffled top cuspidor**
443. M-ICGA 1993 Texas shot glass
444. **Green Opal-ICGA 1998 Frolicking Bears smooth top cuspidor, base glows**
445. Emerald G-ICGA 2003 Frolicking Bears JIP whimsey cuspidor
446. **B-ICGA 2004 Frolicking Bears flared top cuspidor**
447. Vas Opal-ICGA 1983 Frolicking Bears ruffled top cuspidor
448. **B-ICGA 2004 Frolicking Bears flared top cuspidor**
449. Vas Opal-ACGA 2001 Seacoast smooth top cuspidor
450. **Sea Mist Green Opaque-ACGA Seacoast smooth top cuspidor**
451. Vas Opal-ACGA 2001 Seacoast smooth top cuspidor
452. **Sapphire Blue-ACGA 1968 God and Home mug**
453. Red-ACGA 1991 Inverted Strawberry handled basket
454. **G-ICGA 1987 hand-decorated, artist signed 5 1/2" pitcher with CRE top**
455. Blue Opaline-SDCCGC 1995 Thumbprint and Ovals 6 1/2" JIP vase
456. **Red-ACGA 1994 Inverted Strawberry salt and pepper**
457. Vas-Lincoln Land 1978 cat and dog child's mug
458. **Vas Opal-TCGC 1999 Fine Cut and Roses rosebowl**
459. Honey Amber-ICGA 1972 Ribs and Moon 8" plate
460. **Amberina-ICGA 1975 Town Pump/Liberty Bell 9" open edge plate**
461. Medium Blue-Wheaton 1974 Skylab 8" plate
462. **Red-ACGA 1973 Natural Bridge dresser tray**
463. Cobalt B-NCCC 1980 California Quail 8" plate, 3 sides up
464. **Green-ICGA 1996 Grape and Cable 6" plate**
465. Green-ACGA 1987 Morning Glory mini tankard pitcher
466. **Red-ACGA 1989 Morning Glory mini tankard pitcher**
467. Cobalt Blue-HOACGA 1987 Circle Scroll bell
468. **Marigold-HOACGA 1988 Circle Scroll bell**
469. Teal-HOACGA 1989 Circle Scroll bell
470. **Light Green Opal-HOACGA 1996 tulip candleholders, 2 times \$**
471. Plum Opal-HOACGA 1997 tulip candleholders, 2 times \$
472. **Aqua-Singleton Bailey 1988 Swan mug, marked 15/110**
473. Emerald Green Opal-ICGA 1986 Poppy rosebowl
474. **Celeste Blue-ICGA 1995 Acanthus 10" plate**
475. Red-ACGA In God We Trust 3 1/4" plate, marked "ACGA 74-75/Treasurer/Richard Loechinger; certainly one of a kind

The final ten lots consist of groups of club pieces, ICGA and HOACGA (mugs and cuspidors), grouped by dates, sold in groups at so much times the money per item. Thanks for attending or bidding on this auction!

 **Call Today To Sell Your Fine Items**

660-882-5292 Day • 660-882-5283 Evening

1 Mile North of I-70 on Hwy. 5, Exit 101



CARNIVAL GLASS

SATURDAY - October 22

preview FRIDAY - OCTOBER 23, Noon -- 5:00

Doors Open 7:30

Held at The Mickey Reichel Auction Gallery

1440 Ashley Road, Boca Raton, FL 33433

One Mile N. of I-70 on Hwy 5 EXIT 101

Smoke Free Climate

Collection of Robert and Myra Reichel

Long Time Collector

Free Photo Tour available

Plan Now

NO BUYERS PREMIUM OPEN to ALL

ASS AUCTION

er 24, 2015 at 9:00 am

0 PM and 7:30 a.m. - 9:00 a.m. Day of Auction

AM Auction Day

ery in the Same Location Over 37 Years

onville, Missouri USA

20 Miles West of Columbia, MO on I-70

e Controlled Center

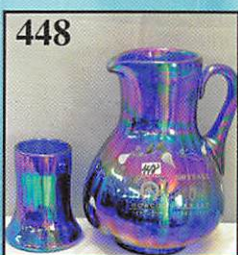
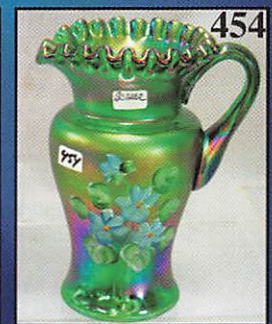
tle Lacock of Topeka, Kansas

and Club Members

www.awk-shn.com

To Attend

PUBLIC AUCTION ZIP ID #30210





☛ **Make Reservations EARLY** at one of

these local motels:

Days Inn: 660-882-8624

Comfort Inn: 660-882-5317

Super 8: 660-882-2900

Holiday Inn: 660-882-6882

Boonville has Heritage Days and Class Reunions In June

Mickey Reichel Auction Center

1 Mile North of I-70 on Hwy. 5, Exit 101, Boonville,
Missouri, 20 Miles West of Columbia, MO on I-70

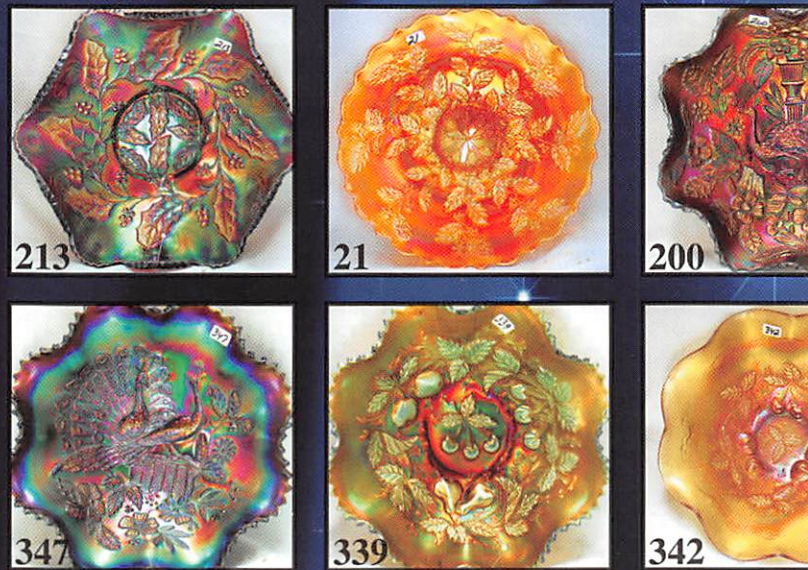


TERMS: Cash or Good Check,
VISA and MasterCard accepted.

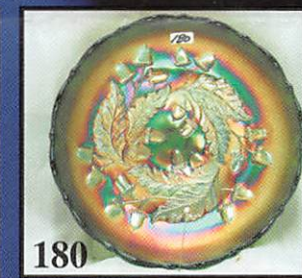
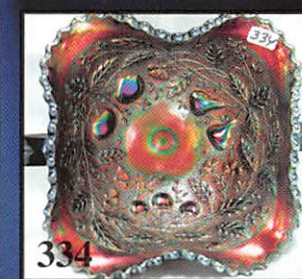
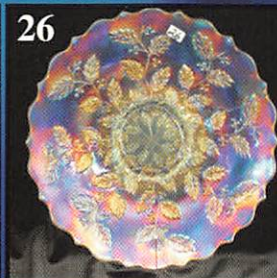


5% Clerking Fee on all purchases except for payment of
cash or check.

Proper I.D. required.



***** No return on any items once sold *****
(No Exceptions)



★★★★NO BUYERS PREMIUM★★★★

ABSENTEE BID POLICY:

PLEASE NOTE: There is a \$6 handling charge for each successful bid which will be added to the selling price for all write-in bids. This is in addition to the cost of postage, insurance and packing. Your write-in bid will be entered just as if you are present and bidding. Successful bidders will be notified in 1 to 3 days by the auctioneer (so be sure to include your phone number). Direct mail bids to Auctioneer Mickey Reichel, 18350 Hunters Ridge Ct., Boonville, MO 65233-2971. Terms: Cash or Check accepted with proper I.D. and Social Security Number and References. Announcements made day of the auction supercede all printed material. Not Responsible for Accidents or Sold Items. Call in Bids before Auction Welcome!

☛ Call for additional information: 660-882-5292 days
or 660-537-5200 evenings before 9:00 p.m.

FAX: 660-882-5292
(evening hours start FAX transmission after beep)
E-mail: mreichel@AWK-SHN.com
Web Site: www.awk-shn.com

They leave the Auction Center ***
(options)

SEE REVERSE FOR DETAILS