

1. PO-Dugan Four Flowers 6 3/4" plate, Big Basketweave reverse
2. **PO-Dugan Flowers and Frames 8 1/2" bowl**
3. Sapphire-Diamond Beaded Basket, rare color, base fracture from time of making
4. **Dark Aqua-Fenton Holly compote**
5. M-"Rings" 9 1/2" covered candy dish
6. **Ice Green Vas-Stretch Fenton Dolphins handled compote**
7. Vaseline stretch-Fenton footed open sugar (Plate 254 in stretch book)
8. **Marigold Flash-"Bird and Blossoms" 4 1/2" mug**
9. W-Fenton Flowers rosebowl, foot chips
10. **Lav-Imp Pansy 9 1/4" ruffled bowl, rim nick**
11. AO-N Fine Cut and Roses 7" bowl, Fancy interior, foot chips
12. **W-Imp Robin 7 pc water set, marked IG**
13. Celeste-1995 SDCCGC Thumbprint and Ovals JIP souvenir vase
14. **P-Imp Grape goblet, pretty center**
15. Clambroth-Imp Waffle Block 9 1/2" handled basket, lots of pastels
16. **Blue Opal-Corn vase, not iridized**
17. Smoke-Imp Rococo 4 1/4" vase, pretty
18. **A-Heavy Iris tumbler, quite attractive**
19. M-Fenton Two Fruits divided bonbon
20. **B-Fenton Peacock at Urn 9 1/4" plate, very colorful**
21. M-Fenton Peacock at Urn 9 1/4" plate, dark and nice
22. **M-Fenton Peacock at Urn 8 3/4" bowl**
23. A-Fenton Peacock at Urn 8 1/4" ICS bowl
24. **Superb B-Fenton Leaf Chain 9" bowl, sits flat but base is noticeably out of round**
25. B-Fenton Holly 9" bowl, very pretty
26. **W-Fenton Holly 8 1/2" ICS bowl, yellows and golds**
27. Superb M-Fenton Orange Tree 8 1/4" ICS bowl
28. **G-Fenton Holly 9 1/4" plate, lots of red iridescence on face**
29. B-Fenton Holly 9 1/4" plate
30. **G-Fenton Persian Medallion 10 1/4" bowl, a nice one**
31. M-Fenton Iris compote
32. **M-Vintage Grape powder jar with lid**
33. P-Vintage Grape powder jar base, no lid
34. **Excellent B-Fenton Persian Medallion hair receiver**
35. Stunning B-Fenton Stag and Holly 10 1/2" ball ftd bowl
36. **M-Fenton Stag and Holly 10 1/4" ICS, ball footed bowl**
37. Startling Pumpkin M-Fenton Pine Cone 6 1/2" plate, never seen one so dark
38. **G-Fenton Pine Cone 6" plate**
39. M-Fenton Pine Cone 6 1/4", 12-sided plate
40. **W-Dugan Persian Garden/Pool of Pearls 6 3/4" plate**
41. PO-Dugan Persian Garden 6 3/4" plate, Big Basketweave exterior
42. **M-Dugan Persian Garden 6 1/2" plate, Big Basketweave extetior**
43. M-Imp Plain/Star Medallion 6 1/4" plate
44. **M-Imp Grape 6 1/4" plate, very pretty**
45. G-Imp Grape 6 1/2" plate
46. **P-Imp Grape 6 1/2" plate**
47. M-Fenton Cherry Chain 6" plate
48. **B-Fenton Cherry Chain 6 1/4" plate**
49. M-Imp Heavy Grape 8" plate, lovely radium
50. **G-Mlbg Cosmos 6 1/2" plate with turned up edge**
51. M-Fenton Stippled Rays/Scale Band 7" plate
52. **PO-Dugan Four Flowers 6 3/4" plate**
53. G-Fenton Vintage 7 3/4" plate
54. **B-Fenton Vintage 7 1/2" plate, pretty one**
55. P-N Grape and Cable 6" saucer
56. **P-Dugan Cherries 6 1/4" CRE plate**
57. A-Westmoreland Scales 6" plate
58. **M-Westmoreland Scales 6 3/8" plate**
59. B-Fenton Dragon and Lotus 8 1/2" ICS bowl, silvery
60. **Cobalt B-Fenton Dragon and Lotus 8 1/4" ICS bowl, lovely**
61. G-Fenton Paneled Dandelion tumbler
62. **A-Fenton Paneled Dandelion tumbler**
63. B-Fenton Paneled Dandelion tumbler
64. **W-Dugan Grapevine Lattice tumbler, lots of pastels**
65. M-Dugan Grapevine Lattice tumbler, excellent
66. **Powder B-Dugan Grapevine Lattice tumbler, scarce color**
67. P-Dugan Grapevine Lattice tumbler
68. **A-Fenton Blackberry Block tumbler**
69. M-Fenton Blackberry Block tumbler
70. **Royal B-Fenton Blackberry Block tumbler**
71. G-Fenton Blackberry Block tumbler
72. **M-N Interior Poinsettia tumbler**
73. P-N Grape and Cable tumbler
74. **Rich M-N Grape and Cable tumbler**
75. B-Dugan Peacock at Fountain tumbler
76. **Pastel M-N Peacock at Fountain tumbler**
77. M-N Grape Arbor tumbler
78. **Honey Amber-Cosmos and Cane tumbler**
79. W-Cosmos and Cane tumbler, nice color
80. **W-Dugan Dahlia tumbler, loaded with pastels**
81. M-Dugan Dahlia tumbler
82. **B-Riihimaki Tiger Lily tumbler**
83. M-Imp Tiger Lily tumbler
84. **Electric P-Imp Tiger Lily tumbler**
85. Very scarce Lav-Imp Tiger Lily tumbler, a real looker
86. **Rare M-Mlbg Country Kitchen butter dish with lid, normal, minor nicks on sawtooth base—they ALL have these factory flaws**
87. Thundering Electric B-N Grape and Gothic Arches 4 1/2" round bowls, 4 times \$
88. **Rare Jade Blue stretch-N Console set with six-sided candlesticks and 10 1/4" flared bowl, first set I've ever seen or sold**
89. M-Imp Octagon goblets, 5 times \$, all nice
90. **M-Paneled 6 1/4" goblet, marked "Souvenir of Redwood Falls, Minn."**
91. M-Paneled 5" goblet, marked "Souvenir of Ellendale, Minn."
92. **W-Fishscale and Beads 7 1/2" plate, outstanding pastels**
93. B-Fenton Persian Medallion 6 3/8" plate, multi-color
94. **BA-Dugan Wishbone and Spades 5 3/4" bowl, electric**
95. P-N Grape and Cable 6 1/4" plate/saucer, very nice
96. **Lav-N Fine Rib 10" vase**
97. Pastel M-N Fine Rib 10 1/2" vase, a beauty
98. **M-N Daisy and Drape vase, turned in top**
99. Ice B-N Thin Rib 11 1/4" vase, tough color and nice
100. **Exquisite A-Fenton Concord 8 3/4", 3 in 1 edge bowl, find one better**
101. M-Dugan Pony 8 1/2" bowl
102. **M-Fenton Thistle banana bowl, dark and nice as can be**
103. M-Fenton Horse Medallion 7" bowl
104. **Powder B-Fenton Lions 7" bowl, scarce base color**
105. Superb Pastel M-N stippled Strawberry PCE bowl
106. **G-N Rainbow PCE bowl**
107. M-Dugan Weeping Cherries 8 1/2" dome base bowl
108. **W-Dugan Lattice and Points 3 1/4" ruffled hat**
109. P-N Three Fruits Medallion 8 3/4" spat ftd bowl, delicious colors
110. **M-Fenton Thistle 8 3/4", 3 in 1 bowl**
111. P-Imp Pansy nappy, nice
112. **P-Imp Lustre Rose fernery, very good color for these**
113. AO-N Four Pillars 10 1/4" vase, butterscotch overlay and pretty
114. **P-Mlbg Four Pillars 12 1/4" vase, radium**
115. Celeste B stretch-Diamond Thermometer 9 3/4" candle vases, 2 times \$
116. **Red-Fostoria 6 1/2" tall compote, unusual item**
117. Red-Fenton Blackberry Open Edge 7", 2-sides up basket
118. **Red-Fenton Orange Tree Shaving mug, a nice one**
119. A-N 8-sided Bushel basket, loaded with purple, gold and blue iridescence
120. **M Flash-Miniature 3" "Hourglass" vase**
121. M-Dugan Golden Harvest wine glass
122. **M Flash-Elephant paperweight, scarce and desirable**
123. M-Nola Inwald 2" square paperweight (?)
124. **M Flash-Threaded, enamel decorated perfume bottle**
125. M Flash-Fluted toothpick, looks for the world like Heisey
126. **B-Berry Band cordial**
127. M Flash-6" etched vase, marked "Superior Bath House, Hot Springs, Arkansas, 1901" on base and "Minnie Brown" on body of vase. Great souvenir item
128. **Vaseline Stretch-Fenton 7 pc nut set (Plate 276 in stretch book)**

129. Pink stretch-Fenton small nut cup
130. **M Flash-Liberty Bell bank w/ partial paper label on base: "Second National Bank, Richmond, Ind"**
131. Celeste-Pastel swan salt
132. **W Flash-4" miniature perfume bottle with stopper**
133. Smoke-Imp Star Medallion goblet, rare color
134. **Lime Vas-Fenton Holly compote**
135. B-Fenton Holly compote
136. **Dark G-Fenton Holly compote**
137. B-Berry Band and Ribs tumblers, 2 times \$
138. **M-Hobnail 3 1/4" tumbler, looks like the glass to a tumble up**
139. B-Starburst 4 1/2" tall wine, a genuinely scarce piece
140. **M-Miniature Hobnail cordials, 3 times \$**
141. M-Imp 474 wine glass
142. **M-Moonprint cordial**
143. M-Balmoral wines, 4 times \$
144. **Amber-Grand Thistle footed tumblers, 2 times \$, third one damaged and is included**
145. A-N Peacocks 9" plate, blue, purple and gold
146. **Electric B-N Peacocks 9" plate**
147. P-N Peacocks 9 1/4" plate
148. **Lime G-N Peacocks 9" plate, tough color**
149. Pastel M-N Peacocks 9" plate, pretty pastels, even on the birds
150. **P-Four Flowers Variant 9 1/2" plate, a looker**
151. P-Imp Ripple 13" vase, flaming throat!
152. **P-Imp Ripple 9" vase, electric**
153. Crystal-Imp Ripple 9 1/2" vase with marigold top
154. **P-Dugan Target 12 1/2" vase, lots of color**
155. P-Mlbg Ohio Star 9 5/8" vase, collector favorite
156. **Vas-Fenton Acorn 7 1/2" bowl**
157. Pastel M-Imp Grape wine decanter with stopper
158. **M-N Fruits and Flowers Variant, stippled, 7 1/2" bowl, rare, small chip on base**
159. P-N Grape and Cable 7 pc water set, pretty and well-matched set
160. **P-N Grape and Cable cologne bottle with stopper, purples and golds**
161. P-N Grape and Cable covered compote, beautiful color, tiny no harm interior rim chip on top
162. **P-N Grape and Cable cracker jar with lid, minor roughness on top rim of base**
163. P-N Grape and Cable banana boat, outstanding color
164. **Awesome M-N Grape and Cable banana boat**
165. Near Emerald G-N Grape and Cable banana boat
166. **Lav Swirl-N Grape and Cable 10 1/2" round fruit bowl**
167. Electric P-Imp Heavy Grape 11" chop plate, eye popping color
168. **G-N Good Luck bowl, very nice coloration**
169. Electric P-Imp Heavy Grape 10" master berry bowl
170. **P-Imp Grape 9" round, deep bowl, gorgeous exterior**
171. P-Imp Grape 11 3/8" bowl, smashing color
172. **Smoke-Imp Hattie 9" flared bowl, quite colorful**
173. M-Imp Pansy oval dresser tray
174. **M-Imp Windmill oval pickle dish**
175. P-Imp Scroll Embossed 8 1/4" bowl, File exterior
176. **Sweet M-Imp Scroll Embossed 5 3/4" bowl, File exterior**
177. M-Imp Pansy 9" bowl
178. **Red-Imp Floral and Optic 8 3/4", flared, footed bowl**
179. Red Amberina-Imp Double Scroll candlesticks, pair
180. **P-Imp Jewels 6 1/2" opening giant rosebowl, Iron Cross Mark**
181. P-Imp Jewels 6 1/4" tall vase, Iron Cross Mark
182. **Red Amberina-Fenton Grape and Cable 6 1/2" nut bowl, scarce piece**
183. Red-Fenton 2-row Open Edge 5 3/4", 2-sides up basket
184. **Red-Fenton 2-row Open Edge, 5 3/4", JIP hat**
185. P-Imp Windmill 8" bowl, lush color
186. **P-N Rose Show 9 1/2" plate, electric highlights**
187. B-Fenton Peacock at Urn 9 1/4" plate
188. **M-N Nippon 8 3/4" PCE bowl, pretty pastel highlights**
189. Super M-N Peacock at Fountain punch bowl base
190. **P-N Strawberry 9 1/4" plate**
191. Electric B-N Grape and Cable bonbon
192. **B-N Poppy Show 8 3/4" bowl, lots of color down inside this bowl**
193. B-N Hearts and Flowers compote, electric highlights
194. **P-N Peacock at Urn 5 3/4" ICS bowl**
195. P-Dugan Cherries 6 1/4" CRE low bowl/plate
196. **P-Dugan Circle Scroll hat, whimsied from tumbler**
197. Beautiful M-Dugan Circle Scroll butter dish with lid, very rare
198. **Scarce B-Dugan Puzzle banana bowl, Floral and Wheat exterior**
199. B-Dugan Apple Blossom Twigs 9" plate
200. **B-Dugan Roundup 9" plate, desirable piece in blue**
201. M-Fenton Kittens 4 1/2" plate, pretty
202. **M-Fenton Kittens 4 1/2" two sides up plate**
203. M-Fenton Kittens cup and saucer
204. **M-Fenton Kittens 4 1/2" square bowl**
205. P-Imp Diamond Lace 9" bowl
206. **Pastel M-Imp Diamond Lace 9" round bowl, super pretty**
207. M-Imp Hobstar and Arches 9" round bowl, very nice
208. **M-Imp Diamond and Sunburst wine decanter with stopper, heat flash in stopper**
209. Teal G-Imp Heavy Grape 7 1/2" bowl
210. **Dark B-Imp Open Rose 9" round, flared bowl, very scarce color**
211. Amber-Imp Lustre Rose 9 1/2", ICS, footed bowl, attractive
212. **Rich M-Imp Star Medallion 7 1/4" round bowl, delightful**
213. M-Imp Star and File 8 1/4" square bowl, radium and lovely
214. **M-Imp Scroll Embossed 9" bowl, File exterior**
215. M-Imp Octagon 7 pc water set
216. **M-Imp Lustre Rose 7 pc water set, some nice tumblers in this set**
217. M-Tree Bark water pitcher, really looks like an aqua base color
218. **M-Imp 474 5 pc water set**
219. Elec P-Imp Diamond Lace 7 pc water set, three tumblers have base chips, handle repaired on pitcher
220. **Crystal w/ Gold Trim-Diamond Lace 6 pc water set**
221. M-Lattice and Daisy 7 pc water set
222. **Smoke-Imp Mayflower 7 pc water set, superior color on this set**
223. M-Imp Broken Arches round punch bowl with five cups, no base
224. **Lime Vas-Fenton Blackberry Open Edge 2-sides up basket**
225. Lime Vas-Fenton Stipple Rays breakfast sugar
226. **Yellow Vas-Fenton Water Lily 6" ball ftd bowl**
227. Yellow Vas-Fenton 2-row, Open Edge 6", 2-sides up hat
228. **Lime Vas-Fenton Stippled Rays/Scale Band 6 1/2" bowl, great marigold overlay**
229. P-Imp Grape decanter with stopper, electric all the way
230. **G-Imp Grape decanter with stopper, marked IG**
231. P-Imp Grape carafe, lots of electric iridescence
232. **P-Imp Loganberry vase, exceptionally nice**
233. Violet-Imp Scroll Embossed large compote, Curved Star exterior, rare and gorgeous
234. **G-Imp Hobstar Nu-Cut vase, unmarked, owner believed it was old**
235. P-Imp Morning Glory 14 1/2" funeral vase, 9" opening, damage to base
236. **Radium M-Alaskan Giant 6 1/4" vase**
237. P-Imp Ripple 9 1/4" vase
238. **A-Summer Days vase**
239. Killer Pumpkin M-N Corn vase, stalk base, WOW!!!
240. **Aqua-Westmoreland Corinth 9" JIP vase**
241. Smoke-Imp Smooth Panels 7 3/4" vase, scintillating pastels
242. **Wonderful Pastel M-Imperial Poppy Show vase, old and outstanding**
243. M-Imp Curled Rib 8 1/2" JIP vase, radium electric gem
244. **M-Imp Ripple 17 3/4" funeral vase, 7 1/2" opening, color top to bottom**
245. M-Imp Ripple 15" mid-size vase, scarcest base size
246. **M-Imp Ripple 12" vase**
247. M-Imp Ripple 10" vase, super
248. **M-Imp Ripple 8 1/2" vase, beautiful**
249. Pastel M-Imp Ripple 11 3/4" vase
250. **Aqua-Imp Ripple 10" vase, scarce color**
251. P-Imp Ripple 10" vase, electric
252. **Ice B-N Tree Trunk 11" vase**
253. Lime G-N Tree Trunk 10 1/4" vase, pretty and scarce

254. W-N Tree Trunk 10 ¼" vase
255. M-N Tree Trunk 11 ½" vase, vibrant color
256. G-N Tree Trunk 10 ½" vase, electric green!
257. P-N Tree Trunk 10 ½" vase, another dandy
258. Sapphire-N Tree Trunk 10 ½" vase, very scarce color
259. M-N Tree Trunk 12 ¾" mid-size vase, pastel paradise
260. Lime G-N Tree Trunk 12 ¾" mid-size vase, very scarce and nice
261. Rich M-N Tree Trunk 11" mid-size vase
262. G-N Tree Trunk 14" mid-size vase with plunger base
263. Electric P-N Tree Trunk 7 ½" squatty vase
264. M-Fenton Orange Tree loving cup
265. Deep B-Fenton Orange Tree loving cup, super pretty, small flaw on handle
266. B-Fenton Dragon and Lotus 7 ¾" ICS bowl
267. B-Fenton Heart and Vine 9 ½" plate, nice for these
268. B-Fenton Orange Tree 9 ½" plate
269. B-Fenton Peacock at Urn 9 ¼" plate, classic carnival iridescence
270. Excellent M-Fenton Peacock and Grape 9 ½" plate
271. G-Mlbg Mayan 7 ¾" ICS bowl, radium and nice
272. M-Mlbg Primrose 10" bowl, satin
273. A-Mlbg Isaac Benesch & Sons 6" advertising bowl
274. A-Mlbg Peacock 6" ICS bowl
275. A-Mlbg Peacock 5 ¾" sauce bowl
276. Light P-Mlbg Blackberry Wreath 7 ½" bowl
277. M-Fenton Lions 7 ½" bowl, good color and well detailed
278. Exceptional M-N Dandelion tankard water pitcher, NO BUDS ABOVE DANDELION, ever seen one before?
279. Electric P-N Dandelion tankard water pitcher, it passed "10" a long, long time ago
280. G-N Dandelion tankard water pitcher, very nice colors

281. P-N Oriental Poppy tankard pitcher, electric all day long
282. Very scarce Ice B-N Grape Arbor tankard water pitcher, dark and colorful
283. M-N Grape Arbor tankard water pitcher, another top notch piece for color
284. P-N Acorn Burrs water pitcher, just about as nice as these come
285. G-N Singing Birds water pitcher, multi-colored beauty
286. G-N Singing Birds tumblers, pretty
287. Electric P-N Acorn Burrs tumbler
288. G-N Wishbone tumbler, above average for these
289. A-N Acorn Burrs tumbler
290. M-Imp Fieldflower tumbler
291. Smoke-Imp Soda Gold tumbler, fine example
292. Dark M-N Grape Arbor tumbler
293. Scarce Ice B-N Grape Arbor tumbler, great pastels
294. Dark M-N Dandelion tumbler
295. G-N Dandelion tumbler
296. Electric P-N Dandelion tumbler
297. Great M-N Grape and Cable small size 7 pc punch set
298. Beautiful G-N Grape and Cable small size punch bowl and base, emerald highlights
299. M-N Acorn Burrs punch bowl and base
300. P-N Acorn Burrs punch bowl and base, outstanding color on bowl
301. P-N Acorn Burrs punch cups, 2 times \$
302. M-N Acorn Burrs punch cups, 2 times \$
303. P-N Grape and Cable punch cup
304. G-N Grape and Cable punch cup
305. W-N stippled Three Fruits 8 ½" bowl, scarce in white and very nice
306. Pastel Champagne-N Three Fruits 8 ½" PCE bowl, what a looker!
307. Pumpkin M-N Three Fruits PCE bowl

WATCH:  **Web Site: www.AWK-SHN.com**

308. G-N stippled Strawberry PCE bowl, fine color
 309. Superb P-N Peacocks 9 1/4" plate
 310. Lav/Smoke-N Peacocks 9" plate, unusual color and great pastels
 311. Ice G-N Peacocks 8 3/4" plate, fine pastels on this one, too
 312. Ice G-N Peacocks 8 1/2" bowl
 313. B-N Rose Show 9 1/2" plate, absolutely exquisite
 314. Lav-N Three Fruits 8 3/4" bowl, pretty greens and fuschias
 315. M-Mlbg Trout and Fly 9" bowl, always in demand and lovely satin
 316. G-Mlbg Peacock at Urn Shotgun Variant 7 1/2", 3 in 1 edge bowl, scarce and lovely
 317. W-Cosmos and Cane butter dish with lid, great pastel piece
 318. Pastel AO-N Hearts and Flowers compote
 319. W-N Hearts and Flowers compote, pinks and blues
 320. B-Dugan Many Fruits punch bowl base, uncommon and nice
 321. M-Fenton Holly 8" ICS bowl
 322. Pretty G-Fenton Holly 8" ICS bowl
 323. A-Fenton Holly 8 1/2" ICS bowl, pretty interior
 324. Clambroth-Fenton Holly 8 1/2" ICS bowl
 325. G-Fenton Holly 9" bowl, pretty
 326. Lime-Fenton Holly 9" bowl, does not glow
 327. B-Fenton Holly 9" bowl, radium silver
 328. M-Fenton Holly 9" bowl
 329. A-Fenton Holly 9" bowl, very pretty
 330. W-Fenton Holly 9 1/4" bowl
 331. M-Fenton Dragon and Lotus 8" spat ftd bowl, radium
 332. A-Fenton Dragon and Lotus 8" spat ftd bowl, beguiling color
 333. G-Fenton Dragon and Lotus 8" spat ftd bowl, super pretty
 334. G-Fenton Dragon and Lotus 7 3/4" ICS, spat ftd bowl
 335. M-Fenton Dragon and Lotus 8 1/2" ICS bowl
 336. Rich A-Fenton Dragon and Lotus 8" ICS bowl, nice color
 337. Royal B-Fenton Dragon and Lotus 8" ICS bowl
 338. Marigold Opal-Fenton Dragon and Lotus 8 3/4" bowl
 339. Peach Opal-Fenton Dragon and Lotus 9" bowl, iridized on outside only
 340. Yellow Amber-Fenton Dragon and Lotus 9" bowl
 341. B-Fenton Ribbon Tie 9", 3 in 1 low bowl
 342. Vaseline stretch-N #658 8 1/2" candlesticks, pair
 343. Vaseline stretch-N Colonial 8 3/4" candlesticks, pair
 344. Russet stretch-N Colonial 8 3/4" candlesticks, pair
 345. Vaseline stretch-11 1/4" flared centerpiece bowl
 346. Vaseline stretch-N #636 candy jar with lid
 347. Vaseline stretch-N 8 1/4" round bowl with tree bark base
 348. Vaseline stretch-N 6" compote/mint dish with tree bark base
 349. Vaseline stretch with blue handle-Fenton #322 lemonade mug
 350. Sapphire stretch-N Concave Diamond tumblers, 6 times \$
 351. Celeste stretch-Fenton 9" rimmed plate
 352. Pearl Lustre-Phoenix Glass Lacy Dewdrop 11 1/2" stemmed banana dish, scarce pattern
 353. M-Imp Double Dutch 9" round, flared, footed bowl, foot chip
 354. MMG-Imp Smooth Panels 10 3/4" flared bowl, rare shape, 4 1/2" base
 355. M-Fenton Persian Medallion large compote, crimped edge
 356. M-Carnival glass lamp shade
 357. M-Fenton Peacock at Urn 9" bowl
 358. M-Fenton Peacock and Dahlia 7" bowl
 359. G-Cambridge Inverted Feather cracker jar with lid
 360. Peach Opal-Art glass 10" brides basket with crimped edge and Pairpoint silverplate holder
 361. B-Grand Thistle tumbler, scarce and nice
 362. M-White Oak tumbler
 363. M-Palm Beach tumbler
 364. Honey Amber-Palm Beach tumbler
 365. Rich M-Rising Sun tumbler
 366. Scarce W-Fenton Blueberry tumbler
 367. M-Fenton Blueberry tumbler
 368. B-Fenton Blueberry tumbler

369. BA-Dugan Wreathed Cherry tumbler
 370. M-Dugan Wreathed Cherry tumbler with green and red enamel decoration
 371. Honey Amber-Cosmos and Cane tumbler
 372. M-Diamond and Daisy Cut tumbler
 373. Scarce Smoke-Imp Fashion tumbler
 374. Dark M-Imp Fashion tumbler
 375. Rich M-Imp Grape tumbler
 376. Electric Smoke-Imp Grape tumbler
 377. G-Imp Grape tumbler
 378. M-N Grape and Cable tankard tumbler, scarce and lovely
 379. G-N Grape and Cable tumbler
 380. Pumpkin M-N stippled Grape and Cable tumbler
 381. G-N Grape and Cable tumbler, Alaska effect
 382. Scarce Lime G-N Grape and Cable tumbler
 383. Electric P-Imp Lustre Rose tumbler
 384. G-Imp Lustre Rose tumbler
 385. M-Imp Lustre Rose tumbler
 386. P-N Springtime tumbler, great example
 387. B-Dugan God and Home tumbler
 388. P-N Grape Arbor tumbler
 389. Scarce M-Dugan Quill tumbler
 390. M-Dugan Circle Scroll tumbler, very pretty
 391. M-Fenton Leaf Tiers tumbler
 392. M-Fenton Strawberry Scroll tumbler, not often seen
 393. Gorgeous G-N Singing Birds tumbler
 394. Dark M-Fenton Bouquet tumbler
 395. M-Imp Soda Gold tumbler, great example
 396. M-Imp 474 tumbler
 397. M-Stork in Rushes Lattice band tumbler, radium
 398. Rare A-Stork in Rushes, Lattice Band tumbler
 399. B-Stork in Rushes Lattice Band tumbler, attractive
 400. M-Beaded Stork in Rushes tumbler
 401. B-Beaded Stork in rushes tumbler, very nice
 402. Scarce P-Westmoreland Checkerboard tumbler
 403. Super M-Imp Windmill tumbler
 404. P-Imp Windmill tumbler
 405. M-Imp Crabclaw tumbler
 406. Dark M-Waterlily and Cattails tumbler
 407. M-N Grape and Gothic Arches tumbler
 408. Renninger B-N Grape and Gothic Arches tumbler, electric
 409. Cobalt B-N Grape and Gothic Arches tumbler
 410. G-N Grape and Gothic Arches tumbler
 411. M-Dugan Vineyard tumbler
 412. Dark M-Imp Robin tumbler
 413. M-Imp Star Medallion tumbler
 414. M-Imp Star Medallion tumbler, larger than previous one and flared
 415. M-Dugan Heavy Iris tumbler, super, super
 416. Lav-Dugan Heavy Iris tumbler, marigold overlay
 417. P-Dugan Heavy Iris tumbler
 418. Scarce W-Dugan Heavy Iris tumbler
 419. G-Cambridge Double Star tumbler
 420. M-Hobstar Band Variant tumbler
 421. Excellent M-N Raspberry tumbler
 422. G-N Raspberry tumbler, very colorful
 423. P-N Raspberry tumbler, also pretty
 424. Scarce P-Dugan Quill tumbler, chip on base but very pretty
 425. Ice B-N Raspberry tumbler, rare, large chip on base

The sale concludes with 25 more numbered items, some contemporary and some older carnival glass. There are also 12 numbered box lots and two unnumbered, some with contemporary glass, some with old carnival glass and some with damaged glass. Thanks for attending and/or bidding on the auction!!

☛ Call Today To Sell Your Fine Items

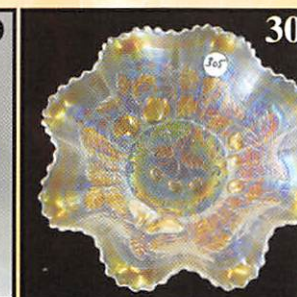
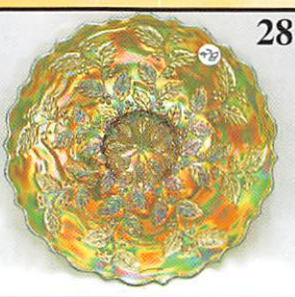
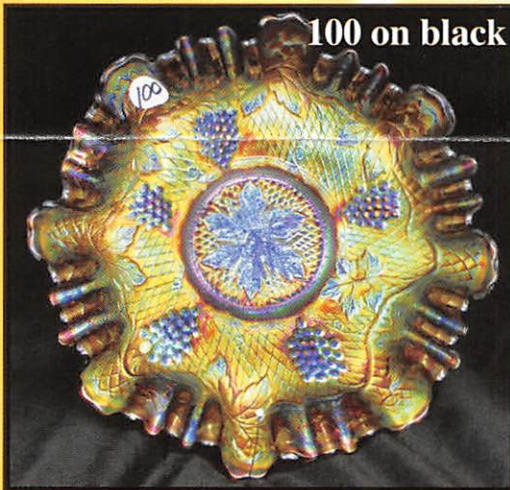
660-882-5292 Day • 660-882-5283 Evening

1 Mile North of I-70 on Hwy. 5, Exit 101



OUTSTANDING CARNIVAL
SATURDAY - SEPTEMBER 26
 preview **FRIDAY - SEPTEMBER 25, Noon -- 5:00**
 Doors Open 7:30
 Held at The Mickey Reichel Auction Gallery
 1440 Ashley Road, Boonville, MO
 One Mile N. of I-70 on Hwy 5 EXIT 101
 Smoke Free Climate Controlled

Roy & Kathy Bledsoe Collection from
 Roy and Myrtle Lacock of Topeka, Kansas
 Free Photo Tour available
Plan Now
 NO BUYERS PREMIUM OPEN to all



WINTER GLASS AUCTION

NOVEMBER 26, 2015 at 9:00 am

10:00 PM and 7:30 a.m. - 9:00 a.m. Day of Auction

AM Auction Day

Location in the Same Location Over 37 Years

Springville, Missouri USA

20 Miles West of Columbia, MO on I-70

Controlled Center Welcome

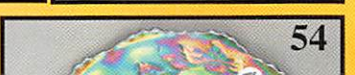
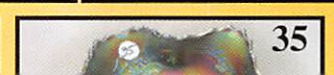
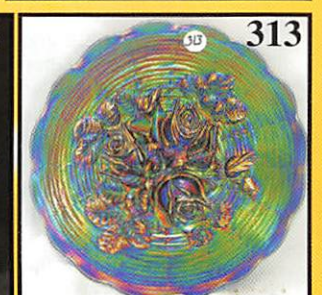
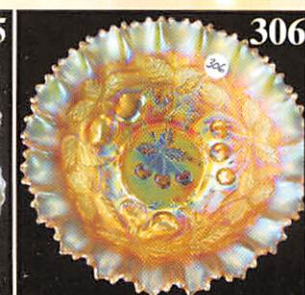
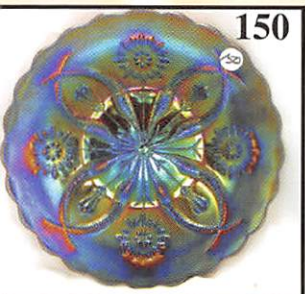
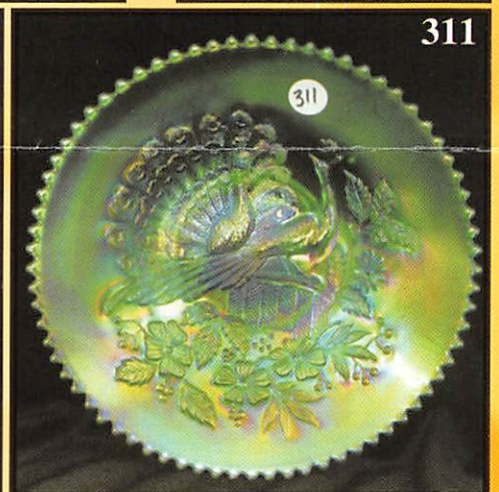
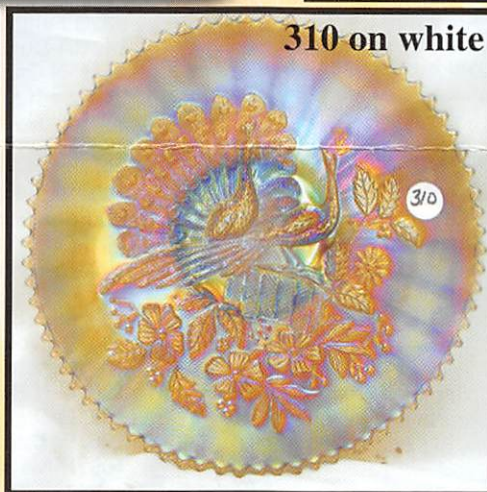
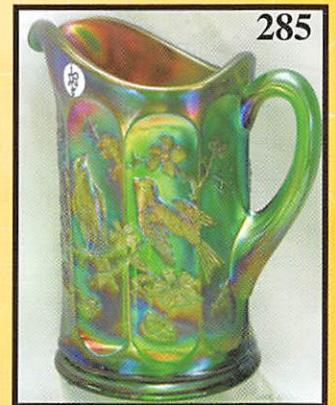
along with Idaho, along with Estate Items of Robert

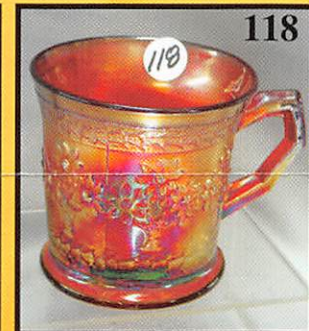
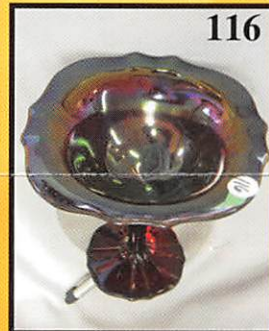
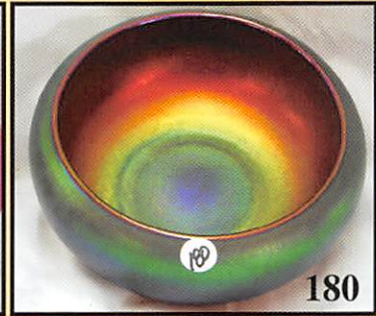
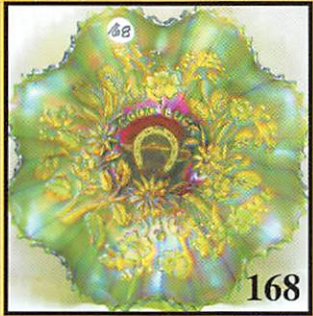
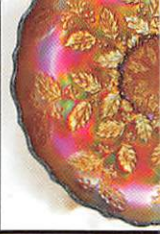
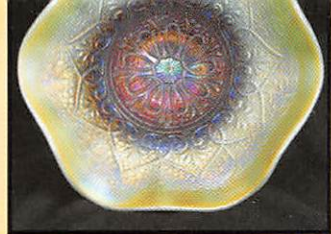
... This will be a Large Quality Auction

www.awk-shn.com

To Attend

PUBLIC AUCTION ZIP ID #30201





Make Reservations **EARLY** at one of these local motels:
 Days Inn: 660-882-8624
 Comfort Inn: 660-882-5317
 Super 8: 660-882-2900
 Holiday Inn: 660-882-6882

Boonville has Heritage Days and Class Reunions In June
Mickey Reichel Auction Center
 1 Mile North of I-70 on Hwy. 5, Exit 101, Boonville, Missouri, 20 Miles West of Columbia, MO on I-70



TERMS: Cash or Good Check, VISA and MasterCard accepted.



5% Clerking Fee on all purchases except for payment of cash or check.
 Proper I.D. required.



***** No return on any items once sold (No Excuses)**



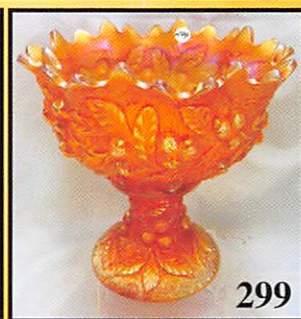
197



198



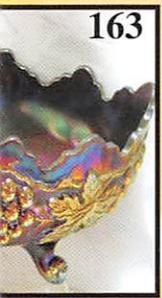
297



299



300



163



164



165



286-291



373-377



231



232



236



239



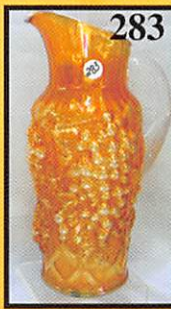
250-251



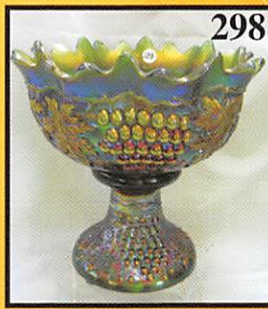
378-382



282



283



298



346



360



383-387



354-1



352



88

★★★NO BUYERS PREMIUM★★★

ABSENTEE BID POLICY:

PLEASE NOTE: There is a \$6 handling charge for each successful bid which will be added to the selling price for all write-in bids. This is in addition to the cost of postage, insurance and packing. Your write-in bid will be entered just as if you are present and bidding. Successful bidders will be notified in 1 to 3 days by the auctioneer (so be sure to include your phone number). Direct mail bids to Auctioneer Mickey Reichel, 18350 Hunters Ridge Ct., Boonville, MO 65233-2971. Terms: Cash or Check accepted with proper I.D. and Social Security Number and References. Announcements made day of the auction supercede all printed material. Not Responsible for Accidents or Sold Items. Call in Bids before Auction Welcome!

Call for additional information: 660-882-5292 days or 660-537-5200 evenings before 9:00 p.m.

FAX: 660-882-5292

(evening hours start FAX transmission after beep)

E-mail: mreichel@AWK-SHN.com

Web Site: www.awk-shn.com

They leave the Auction Center * * *
(options)

SEE REVERSE FOR DETAILS