

- _____ 1. M-Imp Mini Morning Glory 4 ½" vase, a little jewel
- _____ 2. **Smoke-Imp Mini Morning Glory 6" vase, gold and purple irid.**
- _____ 3. M-Imp Thin Rib and Drape 4 ½" vase, nice
- _____ 4. **Citrine-Imp Ripple 6" squatty vase, scarce color for this pattern**
- _____ 5. P-Imp Ripple 6 ¾" squatty vase
- _____ 6. **Russet-Imp Ripple 10 ½" vase, another unusual color for Ripple**
- _____ 7. P-Imp Ripple 11 ¼" vase, color top to bottom
- _____ 8. **Electric P-Imp Ripple 12" vase with spout**
- _____ 9. P-Imp Ripple 16" vase, 4" base
- _____ 10. **M-Imp Ripple 15 ½" vase, 4" base**
- _____ 11. M-Imp Morning Glory 19" funeral vase
- _____ 12. **Breathtaking Electric P-Imp Morning Glory 11 ½" vase, massive 9 ½" opening**
- _____ 13. M-Rustic 14 ½" vase with CRE top
- _____ 14. **B-Rustic 16 ¼" vase, 13 ¼" front height**
- _____ 15. Colorful P-Rustic 15 ½" vase
- _____ 16. **Deep Cobalt-Fenton Fine Rib 16" vase, a beauty**
- _____ 17. Scarce and Lovely G-Fenton Boggy Bayou 10 ¼" vase, exceptional
- _____ 18. **Vas-Fenton Fine Rib 8 ¾" vase**
- _____ 19. Sapphire-Fenton Fine Rib 9 ½" vase, scarce color
- _____ 20. **Powder Blue-Fenton Fine Rib 10" vase, another tough color for Fine Rib**
- _____ 21. Light P-Fenton Fine Rib 10" vase
- _____ 22. **Rare Sapphire-Fenton Butterfly and Berry 9" vase, rarer color than red**
- _____ 23. G-Fenton Butterfly and Berry 9" vase, super pretty
- _____ 24. **G-Fenton Butterfly and Berry 8 ½" vase, also nice**
- _____ 25. Spectacular Electric P-Imp Grape 11 ½" master berry bowl
- _____ 26. **P-Imp Grape 9" bowl**
- _____ 27. Smoke-Imp Hattie 8 ¾" round, flared bowl, excellent color
- _____ 28. **P-Imp Open Rose 8" bowl, multi-color**
- _____ 29. M-Imp Hobstar butter dish with lid
- _____ 30. **M-Imp Hobstar creamer and spooner, 2 times \$**
- _____ 31. P-Imp Windmill 8" bowl, fabulous color
- _____ 32. **Superb M-Imp Pansy 9 ¾" oval dresser tray, very flat, tiny base chip**
- _____ 33. Smoke-Imp Fashion 9" round bowl, radium electric
- _____ 34. **Stunning Pastel M-Imp Blaze 9 ¼" round bowl**
- _____ 35. G-Imp Heavy Grape 11 ¼" chop plate
- _____ 36. **Electric M-Punch Bowl base, believe it is Imperial, check out photo**
- _____ 37. Smoke-Imp Acanthus 9 ½" bowl, gorgeous
- _____ 38. **M-Imp Acanthus 9 ½" bowl, radium dandy**
- _____ 39. Rare-Soda Gold 12 ¼" chop plate
- _____ 40. **M-Imp Cobblestone 8 ¾" bowl, scarce in any color but purple**
- _____ 41. Deep M-Scroll Embossed 7" ruffled compote, Eastern Star exterior
- _____ 42. **M-Imp Octagon 8" vase, one of the old ones**
- _____ 43. Scarce Dark M-Imp Colonial Variant 5" tall compote
- _____ 44. **P-Imp Grape 8 ½" bowl, lovely**
- _____ 45. Vas-Soda Gold cuspidor
- _____ 46. **P-Imp Scroll Embossed 8" bowl, plain exterior**
- _____ 47. Light P-Imp Shell and Sand 8" bowl, oh so pretty
- _____ 48. **Elec P-Imp Pansy 9" bowl**
- _____ 49. M-Stag and Holly 11" , ICS, footed bowl, good pressing
- _____ 50. **Pumpkin M-Stag and Holly 11" ftd bowl, scorching pinks**
- _____ 51. Deep Cobalt-Stag and Holly 10 ½" ftd bowl
- _____ 52. **B-Stag and Holly 8" , spat ftd bowl**
- _____ 53. M-Dragon and Lotus 8 ¾" , ICS bowl, all iridescence on reverse only
- _____ 54. **Deep Cobalt-Dragon and Lotus 8 ¼" ICS bowl, very attractive**
- _____ 55. Dark A-Dragon and Lotus 9" bowl, super pretty
- _____ 56. **Teal Green-Chrysanthemum/Windmill 9" , collar base bowl, scarce color**
- _____ 57. Rich M-Chrysanthemum/Windmill 9" , collar base bowl
- _____ 58. **G-Little Flowers 10 ½" bowl**
- _____ 59. Deep A-Ten Mums 10 ¼" bowl, classy carnival coloration
- _____ 60. **Deep B-Autumn Acorns 8 ½" bowl**
- _____ 61. B-Dugan Peacock at Fountain water pitcher
- _____ 62. **BA-Dugan Beaded Shell water pitcher**
- _____ 63. Electric P-Imp Diamond Lace water pitcher
- _____ 64. **M-Enameled Forget-Me-Not banded tankard 7 pc water set, Drapery interior**
- _____ 65. B-Fenton Fentonia water pitcher, way above average color, interior fracture in base
- _____ 66. **B-Fenton Fentonia tumblers, 4 times \$**
- _____ 67. G-Cambridge Inverted Feather cracker jar with lid
- _____ 68. **W-Cosmos and Cane butter dish with lid, nice pastels**
- _____ 69. M-Enameled Chrysanthemum 7 ½" tall ball vase, neat item
- _____ 70. **Rich M-Imp Morning Glory 10" , JIP vase**
- _____ 71. Dark M-Paneled, ruffled 4 ½" vase
- _____ 72. **Elec B-Fine Rib Footed 5 ½" , JIP vase**
- _____ 73. Nice M-Fine Rib Footed 5 ½" JIP vase
- _____ 74. **M-Summer Days 6" vase**
- _____ 75. Smoke-Imp Banded Fleur-de-Lis 8 ¼" , round, dome base bowl, colorful
- _____ 76. **Smoke-Imp Star Medallion milk pitcher, beautiful**
- _____ 77. M-Imp Poinsettia milk pitcher
- _____ 78. **M-Diamond pattern 6 ¼" milk pitcher with pontil mark**
- _____ 79. M-Imp Hobstar Flower compote
- _____ 80. **G-Four Flowers Variant 9 ¼" plate**
- _____ 81. M-Question Marks crimped edge compote, Georgia Peach exterior
- _____ 82. **M-Curved Star/Headdress 9" round bowl**
- _____ 83. M-Fenton Two Fruits divided bonbon
- _____ 84. **G-Compote vase, 6" tall**
- _____ 85. M-Floral and Grape JIP hat whimsey from tumbler
- _____ 86. **M-Bowl 10" , round, with wheel cut grapes**
- _____ 87. Light Teal-Scales 5" bowl with underplate
- _____ 88. **M-Diamond pattern with fluting 9" rolled rim compote**
- _____ 89. Multi-electric Bond 8" vase, clear base with gorgeous color
- _____ 90. **M-Australian Kookaburra 9 1/2" , 12 ruffle bowl, pretty**
- _____ 91. BA-Australian Heavy Diamonds 8 ½" round bowl
- _____ 92. **B-N Double Loop sugar bowl or chalice**
- _____ 93. G-Cambridge Inverted Strawberry 7" bowl, marked Near Cut
- _____ 94. **M-8" ruffled compote, likely European**
- _____ 95. Blue Opal-Westmoreland Scales 8" ICS bowl
- _____ 96. **Marigold over Moonstone-Westmoreland Carolina Dogwood 8 ½" bowl**
- _____ 97. Smoke-Imp Acanthus 10 ¼" chop plate, great iridescence
- _____ 98. **Red-Dragon and Lotus 8 ½" ICS bowl**
- _____ 99. Blue Opal-Interior Smooth Panel tri-corner rosebowl
- _____ 100. **Rare Blue Opal-N Peacocks 9" bowl, outstanding color on birds**
- _____ 101. PO-Dugan Single Flower 9" , high 3 in 1 crimp bowl
- _____ 102. **PO-Dugan Enameled Lily of the Valley 9" bowl**
- _____ 103. PO-Dugan Stippled Flower 7 ½" bowl with enameled Forget-Me-Nots
- _____ 104. **PO-Dugan Raindrops 8" , 10 ruffle bowl**
- _____ 105. PO-Dugan Caroline 9 ½" , CRE bowl, Smooth Rays interior
- _____ 106. **PO-Dugan Cherries 9 ½" bowl, Jeweled Heart exterior**
- _____ 107. PO-Dugan Cherries 8 ½" ball ftd bowl, plain interior
- _____ 108. **PO-Art Glass 10 ¼" crimped edge bowl, a looker!**
- _____ 109. Fantastic P-Dugan Grape Delight rosebowl
- _____ 110. **M-Dugan Weeping Cherries 8 ½" , ten ruffle, dome footed bowl**
- _____ 111. P-Dugan Ski Star 11" bowl, Compass exterior, quite nice
- _____ 112. **BA-Dugan Wishbone and Spades 5 ¾" bowl, colorful center**
- _____ 113. W-Dugan Lattice and Points 5 ½" hat
- _____ 114. **P-Dugan Lattice and Points 5 ¾" hat**
- _____ 115. W-Fishscale and Beads 7 ¾" plates, lovely pastels
- _____ 116. **A-Diamond Beaded Basket**
- _____ 117. W-Dugan Dahlia berry bowls with red stain, gold trim, 4 times \$
- _____ 118. **Killer M-Lined Lattice 11 ¼" vase**
- _____ 119. BA-Lined Lattice 9 ½" , purples and blues
- _____ 120. **BA-Lined Lattice 5 ½" vase, 5 ½" opening, electric all the way!**
- _____ 121. M-Dugan Mary Ann two-handled vase
- _____ 122. **P-Dugan Target 9 ¾" vase, color up and down**

123. P-Dugan Pulled Loop 10 ¼" vase, flat flake on bottom of base
124. **PO-Dugan Pulled Loop 10 ½" vase, exceptionally nice for a peach opal example**
125. A-Dugan Big Basketweave 9 ¾" vase
126. **Light P-Dugan Stippled Estate 6" vase**
127. PO-Dugan Pinched Swirl 4" vase with tri-corner top
128. **Dugan Venetian 5" pinched art glass vase, tri-corner top**
129. Celeste-Diamond Thermometer 9 ½" candlestick vase
130. **Celeste-Diamond Thermometer 9 ¾" candlestick vase**
131. Westmoreland breakfast creamer and sugar with amber handles, different
132. **Smoke Flash-Westmoreland Estate creamer and sugar - marked Iowa State Fair, 1919"**
133. Blue Opal-Westmoreland Estate creamer, marked - Souvenir Dumont, Minn"
134. **M-Wreath of Roses/Persian Medallion punch cup, marked - Souvenir Danube, Minn"**
135. M-Paneled 5 ¾" goblet, marked - Souvenir Redwood Falls, Minn"
136. **M-Paneled Cruet w/ stopper, Crider (?) iridescence**
137. Rare M-Cambridge Wheat Sheaf cologne bottle, no stopper
138. **M-Woodlands 5 ¼" vase shape hatpin holder**
139. Shriners 1911 Rochester, NY champagne glass
140. **M Flash 5 ¼" goblet- marked - Ellendale, Minn"**
141. M-Octagon wine glass
142. **M-miniature gypsy pot, marked - Souvenir of Glenwood City, Minn"**
143. M-miniature loving cup, faint mark - Souvenir of St. Louis"
144. **M-miniature boot, 2 ½" tall**
145. M-Bobeches, 4 times \$
146. **M-Dugan Vintage Grape powder jar with lid**
147. M-Franklin Flute 2 ¼" rolled rim vase
148. **M-Orange Tree powder jar with lid**
149. M-My Lady's powder jar with lid
150. **M-Cigarette box, 4 ½" by 3 ½"**
151. M-7" car vase
152. **B-Mug, 5" tall, marked - Ethel Haynes, Humboldt, Tenn"**
153. G-Miniature vase, 4" tall
154. **Cobalt B-Miniature vase, 4 ¼" tall**
155. Cobalt B-Miniature vase, 4 ¼" tall
156. **B-Miniature cuspidor, 2 ½" tall, broken pontil mark**
157. P-Imp Scroll Embossed miniature compote
158. **Powder B-Fenton Holly compote**
159. M-Fenton Wine and Roses compote whimsied from wine glass
160. **A-Vintage 5" single lily epergne**
161. Helios G-Imp Grape cup and saucer
162. **P-Flute toothpick holder**
163. Lav-Kittens 4 ¾" 2-sides up plate
164. **M-Kittens 4 ½" plate, super color**
165. M-Kittens 2 ¼" vase/toothpick holder
166. **M-Kittens cup, very nice**
167. M-Kittens 4 ¼" ruffled bowl
168. **AO-Fenton Kittens handled basket, marked Fenton**
169. M-Tri-corner, crimped edge whimsy ashtray, looks to be made from bottom of bottle
170. **Red-Little hat miniature, pontil mark, a true rarity**
171. Soft M-Persian Medallion 6 ¼" plate
172. **Amber tire ashtray, Allstate Balloon on tire**
173. Jade Blue stretch-N 3 ½" sherbet
174. **M Flash-Golden Wedding 1/10 pint bottle, with labels, tax stamp and contents**
175. M Flash-Moscotel Cream bottle with labels and lid
176. **M Flash-German beer stein with pewter top, enamel decorated**
177. Odd Olive Green-Ball Perfect Mason quart jar with zinc lid
178. **Green 88" long flapper beaded necklace**
179. Blue 60" long flapper beaded necklace
180. **Blue 60" long flapper beaded necklace**
181. Purple 60" strung beaded necklace
182. **Carnival 6 strand, 29" long beaded necklace with carnival clasp**
183. Carnival 18" beaded choker
184. **Walborg, Belgium beaded carnival glass evening bag**
185. Beaded carnival glass handbag with zipper
186. **Purple carnival beaded mesh purse with metal frame**
187. BA-Sunflower Basket hatpin
188. **BA-Triad hatpin**
189. BA-Egyptian Butterfly hatpin
190. **BA-Six Plums hatpin**
191. BA-Prism Dart hatpin
192. **BA-Beaded Ball 6" diameter hatpin**
193. BA-Beaded hatpin
194. **M-Orange Tree hatpin holder, normal feet**
195. BA-N Grape and Cable hatpin holder
196. **M-Octagon wine decanter with stopper**
197. M-Fenton Portley 6 ¼" single candlestick
198. **Celeste Blue-Fenton Portley 6" candlesticks, pair**
199. Celeste Blue-Diamond Spindle 8 ¾" candlesticks, pair
200. **Great M-N Colonial 10 ¼" candlesticks, pair**
201. Super Red-Imp Chesterfield 9" candlesticks, pair
202. **P-Fenton Colonial 10 ½" candlesticks, pair**
203. Celeste B-Fenton Colonial 10 ½" candlesticks, pair
204. **Yellow Amber-Fenton Colonial 8 ½" candlesticks, pair**
205. Sapphire-N Colonial 8 ½" candlesticks, pair
206. **P-Imp Heavy Grape 10" round, flared bowl, extra nice**
207. P-Imp Heavy Grape 8" plate, multi electric
208. **Blue Slag base-Imp Open rose 9" round, flared bowl, never seen this color before**
209. Dark Amber-Imp Lustre Rose 9 ¼" round, footed, centerpiece bowl, gorgeous
210. **Unusual medium blue-Imp Open Rose 9" round, flared bowl, looks aquamarine**
211. P-Imp Open Rose 6 ½" , deep, round bowl, electric
212. **Electric P-Imp Grape 9" low-ruffled bowl**
213. P-Imp Pansy nappy
214. **Electric P-Diamond Lace 9 ½" bowl**
215. P-Dugan Cherries 8" bowl, Jeweled Heart exterior
216. **M-Dugan Pony 8 ½" bowl, pretty for these**
217. Superb M-Imp Three Row 7 ½" vase, very rare and wonderful
218. **Scarce P-Fenton Orange Tree fruit bowl, good looking and hard to find**
219. B-Fenton Starflower water pitcher, another rare piece
220. **A-Fenton Thistle 8" CRE bowl, wow is this one pretty**
221. Awesome B-Fenton Chrysanthemum/Windmill 10 ½" , round, footed bowl
222. **PO-Dugan Four Flowers 6 ½" plate**
223. B-Fenton Leaf Chain 7 ½" plate, nice color
224. **M-Panther 7 pc berry set, round, well-matched set**
225. Rare Vas-Fenton Cherry Chain 10" , 3 in 1 edge bowl, and yes, it glows
226. **Deep M-Fenton Thistle 8 ½" , 3 in 1 edge bowl**
227. M-Fenton Holly 9 ½" plate
228. **B-Fenton Holly 8 ¼" , ICS bowl**
229. B-Persian Medallion 9 ½" , 3 in 1 edge bowl, color front and back
230. **M-Lotus and Poinsettia 9" , ICS, footed bowl**
231. G-Dragon and Lotus 8 ¾" bowl, great eye appeal
232. **Super B-Fenton Two Flowers 9" , ICS, ball footed bowl**
233. Royal B-Fenton Peacock and Grape 8" , ICS bowl, very, very nice
234. **M-Fenton Fantail 9" round, footed bowl**
235. Excellent B-Fenton Peacock at Urn 8" , ICS bowl, killer birds
236. **B-Fenton Flowers rosebowl, smooth top rim**
237. B-Fenton Feather Stitch 9" plate, rare piece
238. **Powder B-Fenton Sailboats 6" bowl**
239. Powder B-Fenton Orange Tree 9" bowl, superior colors
240. **B-Aurora Pearls style 12" , 3 in 1 edge brides basket, quite a piece**
241. Vas-Fenton Acorn 7 ½" bowl
242. **Frosty W-Fenton Open Edge, 2-row basket**
243. Ice G-Fenton Open Edge, 2-row 6 ½" basket
244. **Ice G-Fenton Open Edge, 3-row 8" , ICS bowl, scarce item**
245. Vas-Fenton Open Edge, 2-row, 2-sides up, 6" basket

- _____ 246. **Vas-Fenton Blackberry Spray 6 1/2" , JIP hat**
 _____ 247. Vas-Fenton Orange Tree flared mug
 _____ 248. **Sapphire-Fenton Open Edge, 2-row, 5" basket**
 _____ 249. Red-Fenton Open Edge, 2-row, JIP, 6" hat
 _____ 250. **Red-Fenton Blackberry Open Edge 6 1/2" hat**
 _____ 251. BA-Fenton Open Edge, 2-row, 2-sides up, 5 3/4" hat
 _____ 252. **A-N Hearts and Flowers PCE bowl, above average color**
 _____ 253. Green Opal-N Wide Panel epergne, not iridized, trophy piece
 _____ 254. **White Opal-N Poinsettia and Lattice 8 1/2" , ball footed bowl, not iridized**
 _____ 255. Blue Opal-N stippled Three Fruits 8 3/4" bowl, not iridized
 _____ 256. **W-Dugan Roundup 9" , low ICS bowl, sweet pastels**
 _____ 257. W-Fenton Peacock at Urn 9 1/2" plate, exceptional iridescence
 _____ 258. **W-N Rose Show 8 3/4" round bowl**
 _____ 259. Vas Opal-N stippled Grape and Cable bonbon, not iridized
 _____ 260. **W-N Grape and Cable bonbon, scarce color**
 _____ 261. Ice B-N Hearts and Flowers 9" bowl, nice example
 _____ 262. **Radium P-Mlbg Nesting Swan 9 1/2" bowl, blues and purples**
 _____ 263. M-Mlbg Nesting Swan 9 3/4" bowl
 _____ 264. **Sparkling M-Mlbg Rays and Ribbons 9" bowl**
 _____ 265. P-Mlbg Seaweed 10 1/4" bowl, chip on ruffle
 _____ 266. **P-Mlbg Primrose 9 1/2" bowl**
 _____ 267. Radium M-Mlbg Holly Sprig spade shaped nappy, very pretty
 _____ 268. **M-Mlbg Holly Whirl two sides up bonbon, Isaac Benesch and Sons advertising on base**
 _____ 269. Radium M-Mlbg Strawberry Wreath compote
 _____ 270. **P-Mlbg Hobstar and Flower giant rosebowl, has been glued back together**
 _____ 271. Radium P-Mlbg Boutonniere compote, a dazzler
 _____ 272. **P-Mlbg Four Pillars 12 1/4" vase**
 _____ 273. G-Mlbg Four Pillars 10 1/4" vase, great color top to bottom
 _____ 274. **Radium G-Mlbg Primrose 9 1/2" bowl, well above average**
 _____ 275. Near Emerald G-Mlbg Primrose 9 3/4" bowl, loaded with blues
 _____ 276. **Emerald Green-Mlbg Holly Sprig 9 3/4" bowl, no upgrade needed here**
 _____ 277. G-Mlbg Nesting Swan 10" bowl
 _____ 278. **Emerald G-N Three Fruits PCE bowl, smooth back, super**
 _____ 279. Electric G-N Strawberry 9" bowl, BW back
 _____ 280. **G-N Fruits and Flowers stemmed bonbon, loaded with blues**
 _____ 281. Emerald G-N round Bushel basket, find one better
 _____ 282. **Electric G-N Tree Trunk 10 1/4" vase, as good as these come**
 _____ 283. Emerald G-N Good Luck 9" bowl, damage on rim, but who cares
 _____ 284. **G-N Tree Trunk 6 1/2" squatty vase, delightful color**
 _____ 285. Ice B-N Daisy and Plume/Raspberry interior three footed candy dish, normal feet
 _____ 286. **Ice B-N Hearts and Flowers ruffled compote, fine example**
 _____ 287. Pastel AO-N Hearts and Flowers ruffled compote
 _____ 288. **Pretty W-N Hearts and Flowers ruffled compote**
 _____ 289. Electric B-N Hearts and Flowers ruffled compote
 _____ 290. **Stunning M-N Hearts and Flowers ruffled compote**
 _____ 291. Honey Amber-N Rainbow compote, BW exterior, twisted stem
 _____ 292. **P-N Petals ruffled compote**
 _____ 293. B-Persian Medallion large, crimped edge compote

WATCH:  **Web Site: www.AWK-SHN.com**

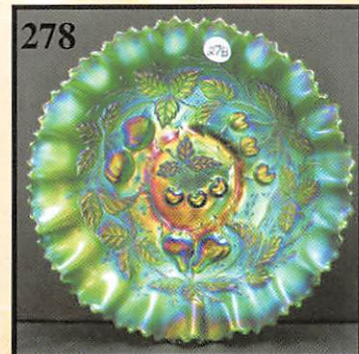
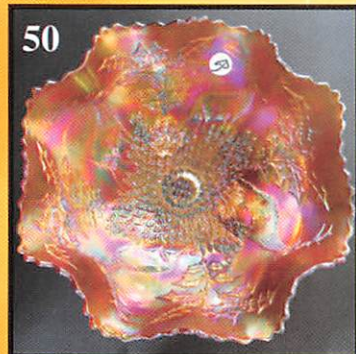
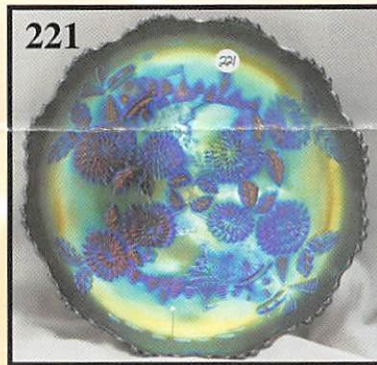
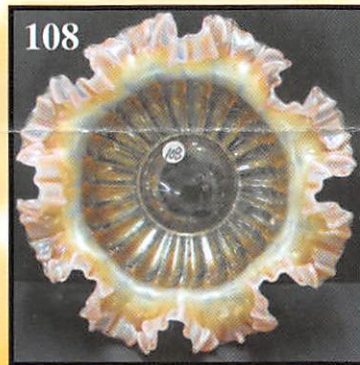
294. P-N Raspberry 7" ruffled compote, very pretty
295. P-Fenton Iris 7" compote
296. M-N Grape and Cable 9" , spat footed plate, extra nice
297. P-N Grape and Cable 8 3/4" , spat footed bowl, multi-electric
298. M-Fenton Horse Medallion 7" bowl
299. M-N Peacock at Fountain sugar bowl with lid
300. Lav-N Jockey Club 6" advertising plate, rare, chip on marie
301. A-Fenton Garden Mums 6 1/4" plate
302. Beautiful P-N Grape and Cable centerpiece bowl with turned in tips, color to die for, fracture in base
303. P-N Memphis fruit bowl and base, excellent
304. P-N Memphis punch cups, 6 times \$
305. Exquisite P-N Memphis 9 1/2" round master berry bowl
306. P-N Acorn Burrs butter dish with lid, quite nice
307. B-N Grape and Gothic Arches butter dish with lid, base is Renninger blue
308. B-Fenton Panther 5" round bowl
309. P-N Wild Rose bowl with Stippled Rays interior, pretty
310. Dark A-N Leaf and Beads 8 1/2" tri-corner whimsied bowl
311. P-N Grape and Cable banana bowl, multi-electric
312. Electric B-N Grape and Cable bonbon, 4-sides up
313. P-N Grape and Cable PCE bowl
314. AO-N Beaded Cable rosebowl
315. AO-N Leaf and Beads rosebowl
316. AO-N Fine Cut and Roses 7" footed bowl
317. AO-N Drapery rosebowl
318. Dark Powder Blue Opal-N Four Pillars 10 1/4" vase, rare and nice
319. AO-N Four Pillars 10 1/4" vase, fine butterscotch overlay
320. W-N Daisy and Drape vase, turned in top
321. Brilliant M-N Four Pillars 8 3/4" vase
322. P-N Four Pillars 12 1/2" vase
323. M-N Daisy and Drape vase with flared top
324. AO-N stippled Three Fruits Medallion 9" spat footed bowl, luscious
325. P-N Three Fruits Medallion 9" , spat footed bowl, super nice
326. AO-N stippled Three Fruits 9" bowl, delightful colors
327. M-N stippled Three Fruits 8 1/2" bowl, lots of pinks and blues
328. P-N stippled Three Fruits 8 1/2" bowl, multi-electric
329. AO-N Rose Show 9" bowl, opal on roses
330. AO-N Peacocks 9" bowl
331. Alluring M-N Peacocks 9" plate
332. P-N Peacocks 9" plate
333. Exceptional Deep P-N Peacocks 9" bowl, good gracious!
334. B-N Peacocks PCE bowl
335. Pastel M-N Peacocks 8 1/2" bowl
336. B-N Peacock at Urn 5 1/2" ICS bowl, electric all the way
337. Dark A-N Strawberry 9" plate, BW exterior
338. M-N Strawberry 8 1/2" bowl, plain exterior
339. Dark A-N Nippon PCE bowl, loads of color
340. Electric B-N Poppy pickle dish
341. AO-N round Bushel basket, fine pastels
342. Lavender/Horehound-N round Bushel basket, nice
343. B-N round Bushel basket, color inside and out
344. Deep P-N round Bushel basket
345. P-N Good Luck 9" plate, sliver off marie, very attractive otherwise
346. Pastel M-N Good Luck 8 3/4" bowl, this is what pastel is all about
347. Dark P-N Good Luck 9" bowl, electric blues and purples
348. Dark P-N Butterfly bonbon with threaded exterior
349. P-N Wishbone 8 1/2" footed bowl
350. Electric B-N Fruits and Flowers stemmed bonbon
351. Electric B-N Drapery rosebowl
352. Dark P-N Leaf and Beads rosebowl, colors deluxe
353. Electric B-N Leaf and Beads rosebowl
354. Blue Opal-N Smooth Rays 6 1/4" compote
355. P-N Tree Trunk 7 1/2" squatty vase, very nice
356. P-N Tree Trunk 11 1/2" vase, squarish top
357. Electric P-N Thin Rib 10 1/2" vase
358. P-N Thin Rib Jester's Cap 7 1/2" vase, scarce
359. Electric B-N Thin Rib 9 3/4" vase
360. Radium Smoke-N Thin Rib 9 3/4" vase, very rare color
361. Ice G-N Drapery 9" vase, good feet
362. Lime G-Fenton Long Thumbprint 10 1/2" vase, does not glow
363. B-N Drapery Variant 8 3/4" vase
364. Unusual Soft Blue-N Drapery Variant (footed) 10" vase, very pretty
365. Russet-N Four Pillars 12" vase, lovely pastels
366. Awesome Pastel M-N Fine Rib 10 1/4" vase
367. Lav-N Fine Rib 10" vase, scarce color
368. B-N Diamond Point 10 1/4" vase, electric
369. Dark A-N Diamond Point 10" vase with tri-corner top
370. Scarce AO-N Diamond Point 8 1/2" vase
371. Smoky Lavender-Imp Columbia 5 3/4" vase
372. Red Amberina-Fenton Fine Rib 12 1/2" vase
373. M-Imp Jewels 6" vase, Iron Cross Mark
374. Vaseline Stretch-U.S. Glass Sweet Pea vase, 9" across the top, truthfully, this is a jardiniere shape and quite remarkable
375. Sapphire Blue stretch-Chesterfield mug
376. Red Stretch-5" Optic Panels mayo bowl with underplate, incredibly nice
377. Red stretch-Imperial Chesterfield sugar bowl
378. Red stretch-Imperial Chesterfield 4 1/2" tall compote, amberina base
379. Red stretch-Imperial Floral and Optic 8 3/4" round, flared bowl
380. Red stretch-Trumpet 8" vase with crimped top edge
381. Red stretch-Vase, 3 3/4" tall, 2-sides up
382. Red stretch-Tumbler, 3 1/2" tall
383. Red stretch-Optic Panels 7 1/2" bowl, 3" deep
384. Red-Royal Luster 8 1/2" rolled rim bowl
385. Red-Royal Luster 7" console bowl
386. Blue-Royal Luster 8" round bowl, 4 1/2" deep
387. Aqua stretch-Imperial Floral and Optic 10 3/4" footed cake plate
388. Aqua stretch-Imp Smooth Panels 7 1/2" vase, 6" opening
389. P-Imperial Jewels 8 1/4" flared rim bowl, Iron Cross Mark
390. Purple-Royal Luster 9" float bowl
391. P-Imperial Jewels 3 1/2" rosebowl, Iron Cross Mark
392. Purple stretch-Art glass vase, 6 3/4" tall
393. Deep teal-Art glass vase, 7" tall, marked - Webb's, J.T. HR Patent"
394. Purple-Art glass vase, 6" tall
395. Red with green spatter-Loetz type 9 1/2" , 12 ruffle bowl, sliver on underside of ruffle
396. Cobalt Blue-Fenton Orange Tree shaving mug, fantastic
397. Medium Blue-N Singing Birds mug
398. Lav-Beaded Shell mug, honey amber overlay
399. Purple-Beaded Shell tumbler
400. Rare Violet-Beaded Shell tumbler
401. Purple-Cambridge Inverted Strawberry tumbler, marked Near Cut
402. Blue-Fenton Fentonia tumbler
403. Blue-Fenton Orange Tree Scroll tumbler, uncommon pattern
404. Blue-Stork and Rushes Beaded tumbler
405. Smoky Lavender-Heavy Iris tumbler, small chip on base
406. Blue-Dugan Peacock at Fountain tumbler, electric
407. Electric B-Imperial Windmill tumbler, sliver on base
408. P-N Acorn Burrs tumbler
409. Electric P-N Grape and Cable tumbler

Selection of carnival glass books including Sherman Hand titles and others will close out this sale. Thank you for attending.

☛ Call Today To Sell Your Fine Items

660-882-5292 Day • 660-882-5283 Evening

1 Mile North of I-70 on Hwy. 5, Exit 101



BEAUTIFUL CARNIVAL

SATURDAY - JUNE 27, 2015 at 9:00 am - pm

Doors Open 7:30

Held at The Mickey Reichel Auction Gallery

1440 Ashley Road Boca Raton, FL 33433

One Mile N. of I-70

Smoke Free Climate Controlled

DEBBIE & DAVE BROWN

Free Photo tour with purchase

Plan Now

NO BUYERS PREMIUM OPEN to ALL

CRYSTAL GLASS AUCTION

View Friday JUNE 26 12:00 Noon -- 5:00 PM

AM Auction Day

Every in the Same Location Over 37 Years

Springfield, Missouri USA

Exit on Hwy 5 EXIT 101

Controlled Center Welcome

AWK SHN COLLECTION

www.awk-shn.com

To Attend

PUBLIC AUCTION ZIP ID #2175

218



174-175



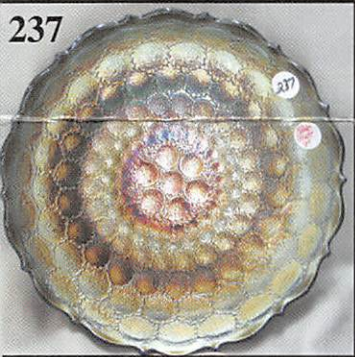
259



267



237



252



276



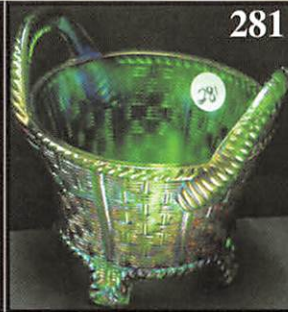
339



18



281



253



370

374



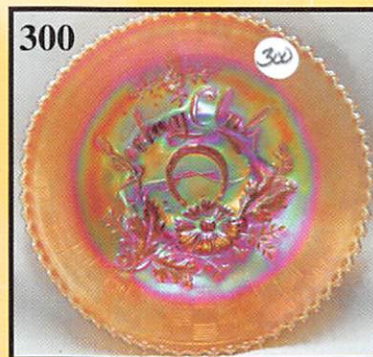
279



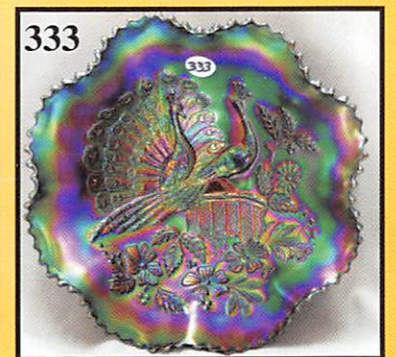
289

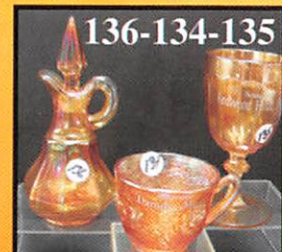
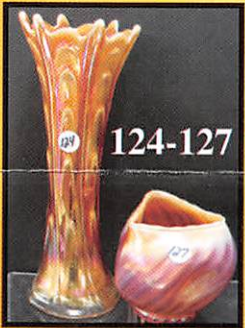
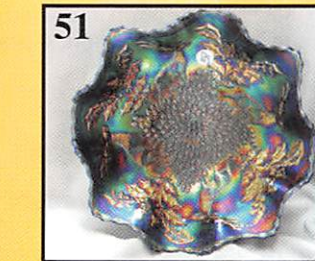
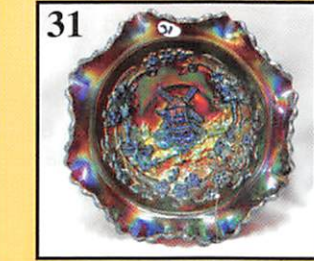
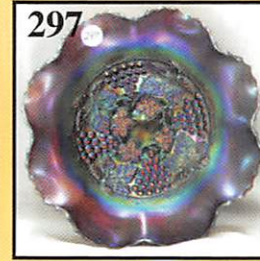
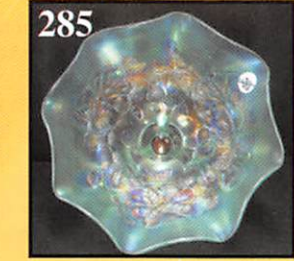
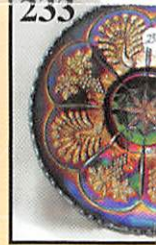


300



333



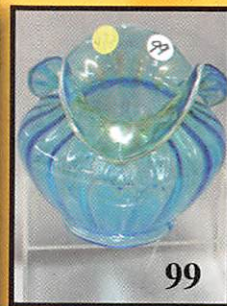


Make Reservations **EARLY** at one of these local motels:
 Days Inn: 660-882-8624
 Comfort Inn: 660-882-5317
 Super 8: 660-882-2900
 Holiday Inn: 660-882-6882

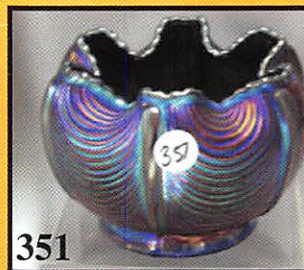
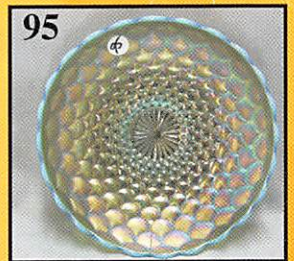
Boonville has Heritage Days and Class Reunions In June
Mickey Reichel Auction Center
 1 Mile North of I-70 on Hwy. 5, Exit 101, Boonville, Missouri, 20 Miles West of Columbia, MO on I-70



TERMS: Cash or Good Check, VISA and MasterCard accepted.
 5% Clerking Fee on all purchases except for payment of cash or check.
 Proper I.D. required.



***** No return on any items once (No Exc**



★★★NO BUYERS PREMIUM★★★

ABSENTEE BID POLICY:

PLEASE NOTE: There is a \$6 handling charge for each successful bid which will be added to the selling price for all write-in bids. This is in addition to the cost of postage, insurance and packing. Your write-in bid will be entered just as if you are present and bidding. Successful bidders will be notified in 1 to 3 days by the auctioneer (so be sure to include your phone number). Direct mail bids to Auctioneer Mickey Reichel, 18350 Hunters Ridge Ct., Boonville, MO 65233-2971. Terms: Cash or Check accepted with proper I.D. and Social Security Number and References. Announcements made day of the auction supercede all printed material. Not Responsible for Accidents or Sold Items. Call in Bids before Auction Welcome!

Call for additional information: 660-882-5292 days or 660-537-5200 evenings before 9:00 p.m.

FAX: 660-882-5292

(evening hours start FAX transmission after beep)

E-mail: mreichel@AWK-SHN.com

Web Site: www.awk-shn.com

they leave the Auction Center * * *
(options)

SEE REVERSE FOR DETAILS