

- _____ 1. A-Scales 6" plate
- _____ 2. **A-Scales 4" round bowl**
- _____ 3. A-N Grape and Cable 6" plate
- _____ 4. **M-Field Thistle 6" plate, scarce**
- _____ 5. M-Fishscale and Beads 7" plate, a beauty
- _____ 6. **M-Imp Star and File 6 ¼" plate, radium pinks**
- _____ 7. M-Cherry Chain 6 ½" plate
- _____ 8. **Soft B-Leaf Chain 7 ½" plate, nice iridescence**
- _____ 9. B-Persian Medallion 6" plate, radium silver finish, spot of missing irid.
- _____ 10. **PO-Four Flowers 6 ½" plate, lots of opal on reverse**
- _____ 11. P-N Grape and Cable 6 ½" 2-sides up plate, pretty
- _____ 12. **Amber-Imp Heavy Grape 8" plate**
- _____ 13. Stunning M-Imp Heavy Grape 8" plate
- _____ 14. **G-Imp Heavy Grape 8 ¼" plate, nice for green**
- _____ 15. G-Imp Grape 6 ½" plate
- _____ 16. **G-N Rainbow 8 ½" PCE bowl, scarce, BW exterior**
- _____ 17. G-N Rainbow 8 ½" PCE bowl, scarce, plain exterior
- _____ 18. **M-N Rainbow 8 ½" PCE bowl, BW exterior**
- _____ 19. G-Autumn Acorns 8 ½" bowl
- _____ 20. **Flaming M-Imp Grape 9" bowl, super pastels**
- _____ 21. M-Orange Tree ruffled compote whimsied from compote
- _____ 22. **Powder B-Orange Tree ruffled compote whimsied from compote**
- _____ 23. P-Dugan Many Fruits punch cups, 2 x \$
- _____ 24. **M-Mikado compote**
- _____ 25. B-N stippled Grape and Cable punch cups, 3 x \$, great if you need them
- _____ 26. **P-N Grape and Cable 4 pc table set, nice set**
- _____ 27. Pretty G-N Grape and Cable spooner
- _____ 28. **Scarce M-N Grape and Cable breakfast creamer and sugar**
- _____ 29. P-N Grape and Cable breakfast creamer and sugar
- _____ 30. **P-N Grape and Cable 5 pc small punch set, very attractive**
- _____ 31. Dark M-Imp Lustre Rose 11", flared centerpiece bowl
- _____ 32. **P-Dugan Many Fruits punch bowl top, super, got a base?**
- _____ 33. P-Dugan Many Fruits punch cups, also gorgeous, 6 x \$
- _____ 34. **P-Imp Grape punch bowl base, what color!**
- _____ 35. M-Imp Fashion 9 pc punch set, dark and well-matched
- _____ 36. **G-N Grape and Cable 5" round berry bowls, 2 x \$**
- _____ 37. P-N Grape and Cable whiskey shot glasses, one has chipped base, sells as lot
- _____ 38. **P-N Singing Birds mug**
- _____ 39. M-Imperial Robin mug
- _____ 40. **M-Dugan Fisherman's mug, scarce**
- _____ 41. P-Dugan Fisherman's mug, nice
- _____ 42. **P-Dugan Shell mug**
- _____ 43. Powder B-Orange Tree mug, bruise in base
- _____ 44. **Lovely B-Orange Tree mug**
- _____ 45. M-Orange Tree mug
- _____ 46. **G-N Singing Birds tumbler**
- _____ 47. M-Imperial Robin mug
- _____ 48. **P-N Singing Birds mug**
- _____ 49. M-Orange Tree stemmed sherbets, 2 x \$
- _____ 50. **P-Floral and Grape tumbler**
- _____ 51. Deep A-N Beaded Cable rosebowl, Rayed interior
- _____ 52. **Scarce M-N Flute butter dish with lid, minor rim roughness under rim of base**
- _____ 53. Custard w/ Nutmeg-N Grape and Gothic Arches goblet
- _____ 54. **P-N Wild Rose nut bowl with Stippled Rays interior**
- _____ 55. P-N Rose Show 9 ½" plate, flaws on the roses
- _____ 56. **Great M-Imp Grape 9 ¼" plate**
- _____ 57. A-N Strawberry 8 ½" deep plate
- _____ 58. **G-N Wishbone 9 ¾" PCE, collar base bowl, a good one**
- _____ 59. P-Imp Heavy Grape 8" plate, electric highlights
- _____ 60. **Awesome Amber-Imp Heavy Grape 11 ½" chop plate**
- _____ 61. M-N Tree Trunk 7" squatty vase, squarish top
- _____ 62. **G-N Tree Trunk 7" squatty vase, Coke bottle green base and lovely**
- _____ 63. G-N Tree Trunk Vt. 7 ¼" squatty vase, starred base
- _____ 64. **G-N Tree Trunk 10 ¾" vase, exceptionally nice**
- _____ 65. P-N Tree Trunk 6 ¾" squatty vase, outstanding color
- _____ 66. **P-N Tree Trunk 6 ¾" squatty vase, 5 ¼" opening, equally nice**
- _____ 67. Astonishing P-N Tree Trunk 6 ¾" squatty vase, 5" opening, wow!
- _____ 68. **Elec B-N Tree Trunk 7" squatty vase**
- _____ 69. Light M-Imp Ripple 10 ¾" vase with spout
- _____ 70. **Superb Pastel M-Imp Smooth Panels 6 ¾" tall jardinière type vase, 4 ½" base**
- _____ 71. MMG-Imp Smooth Panels 6" vase, 6 ½" opening, delightful
- _____ 72. **P-Diamond Point Columns 7" squatty vase**
- _____ 73. M-Fenton Rustic 8 ¾" vase with CRE top
- _____ 74. **Super Frosty W-N Tree Trunk 10 ½" vase**
- _____ 75. AO-N Four Pillars 10" vase, normal feet
- _____ 76. **G-N Leaf Columns 6 3/8" squatty vase, loads of color**
- _____ 77. Aqua with Opal Tips-N Beaded Cable rosebowl, different
- _____ 78. **Rich M-N Sunflower 8 ¼" spatula footed bowl**
- _____ 79. P-N Embroidered Mums 8 ¾" bowl, blues and purples
- _____ 80. **P-N stippled Three Fruits 9" plate, well struck with purples, golds and blues**
- _____ 81. G-Cambridge Inverted Feather cracker jar with lid, a classic beauty
- _____ 82. **P-Millersburg Peacock at Urn 10 ½" bowl, rainbow colors front and back**
- _____ 83. P-N Grape and Cable cologne bottle w/ stopper, luscious color
- _____ 84. **Ice B-N Hearts and Flowers 9" plate, desirable**
- _____ 85. Frosty W-Fenton 5" ruffled compote
- _____ 86. **Killer M-Imp Open Rose 9 ¼" plate**
- _____ 87. Pastel M-Imp Smooth Panels 10 ½" vase
- _____ 88. **Smoke-Imp Hobstar and Arches 9 ½" ICS bowl, astonishing blues**
- _____ 89. Deep P-N Three Fruits Medallion 8 ¾" spatula footed bowl, electric interior
- _____ 90. **P-Dugan Holly and Berry 7 ½", 10 ruffle bowl**
- _____ 91. PO-Dugan Leaf Rays spade shape nappy
- _____ 92. **P-Dugan Leaf Rays spade shape nappy, electric highlights**
- _____ 93. W-Dugan Double Stem Rose 9", high 3 in 1 crimped edge, wonderful pastels
- _____ 94. **W-Dugan Grapevine Lattice 7" bowl, pretty**
- _____ 95. W-N Grape and Cable punch cup, much in demand
- _____ 96. **M-N stippled Grape and Cable punch cups, 2 x \$**
- _____ 97. Outstanding Electric P-Imp Flute toothpick holder
- _____ 98. **M-N eight-sided Bushel Basket, above average for sure**
- _____ 99. P-N eight-sided Bushel Basket, great color inside and out
- _____ 100. **M-Australian Kangaroo 10 ¾", 16 ruffle bowl, radium dandy (this is the big kangaroo)**
- _____ 101. Radium M-Australian Melon Rib 4 ¾" vase, neat shape too!
- _____ 102. **P-Dugan Question Marks 7" stemmed plate, very pretty reverse, gold finish interior**
- _____ 103. PO-Dugan Ski Star 11" bowl
- _____ 104. **M-Lattice and Daisy 7 ½" bowl**
- _____ 105. W-Dugan Persian Garden 11" ICS bowl, pastel paradise
- _____ 106. **P-Dugan Dogwood Sprays 8" ten ruffle bowl, fabulous iridescence**
- _____ 107. M-Dugan Vineyard water pitcher
- _____ 108. **Pumpkin M-Dugan Vineyard tumbler**
- _____ 109. Deep Blue Opal Hearts and Flowers compote, not iridized
- _____ 110. **Blue Opal-Ruffles and Rings 9 ½" footed bowl, not iridized**

- _____ 111. Gorgeous B-Blackberry Spray 6 ¾" hat, finest kind
- _____ 112. **M-Kittens cup, colorful inside**
- _____ 113. M-Kittens 4 ½" plate
- _____ 114. **Red-Orange Tree standard mug, looks red across the room**
- _____ 115. Red-Blackberry Open Edge 7", 2-sides up hat, nice
- _____ 116. **Superb B-Chrysanthemum/Windmill 11", ball footed bowl**
- _____ 117. P-Fenton Stippled Rays 9" salad bowl
- _____ 118. **A-Fenton Vintage (Grape) 8", 3 in 1 bowl, neat shape**
- _____ 119. M-Jain Fish 9 ½" vase, radium
- _____ 120. **M-Dugan Pony 8 ½" bowl**
- _____ 121. G-N Fruits and Flowers stemmed bonbon, very pretty
- _____ 122. **G-Fenton Peacock Tail 6" advertising hat, General Furniture 1910 on base, scarce**
- _____ 123. M-N Daisy and Drape vase, nice
- _____ 124. **W-N Daisy and Drape vase**
- _____ 125. Ice B-N Thin Rib 11" vase, scarce color
- _____ 126. **Ice G-N Thin Rib 12" vase, another tough color**
- _____ 127. Electric P-Imp Morning Glory 18" funeral vase, 7 ½" opening
- _____ 128. **Pumpkin M-N Thin Rib 12 ¾" mid-size vase, lush iridescence**
- _____ 129. P-N Tree Trunk 14" mid-size, plunger base vase, extra pretty with a great shape and scarce
- _____ 130. **Great M-Imp 474 round top 12 pc punch set**
- _____ 131. P-N Three Fruits 9" plate, greens, yellows, purples and blues
- _____ 132. **Striking M-Fenton Pine Cone 7 ¾" plate, scarce size**
- _____ 133. P-Dugan Wishbone and Spades 10 ¾" chop plate, collector favorite
- _____ 134. **Sizzling Electric P-Dugan Wishbone and Spades 6 ½" plate**
- _____ 135. B-Persian Medallion 6 ¼" plate; really colorful radium finish
- _____ 136. **P-N Wishbone 9 ½" PCE, collar base bowl, rainbow of color**
- _____ 137. A-Fenton Holly 9 ½" plate, nice
- _____ 138. **Vibrant G-Fenton Holly 9 ½" plate**
- _____ 139. Lovely M-N Three Fruits 9" plate, pretty pastels
- _____ 140. **P-N Three Fruits 9" plate, sweet purples and golds**
- _____ 141. Ice B-N Peacock at Urn 10" ICS master bowl, satin finish
- _____ 142. **G-N Peacocks 9" plate, pretty example**
- _____ 143. P-N Peacocks 9" plate, electric blue and purple highlights
- _____ 144. **AO-N Peacocks 8 ¾" bowl, super pastels surrounding a sunset center**
- _____ 145. B-N Peacocks PCE bowl, golds, blues and purples
- _____ 146. **B-N stippled Peacocks PCE bowl, tough to find stippled**
- _____ 147. B-N Poppy Show 9" plate, multi-color finish
- _____ 148. **M-N Poppy Show 9 ½" plate**
- _____ 149. Red-Fenton Dragon and Lotus 8 ½" ICS bowl
- _____ 150. **Red-Fenton Panther 5 ½" bowl, prettiest one I've seen, great colors on panthers**
- _____ 151. Powder B-Fenton Lions 7" bowl, superbly detailed
- _____ 152. **P-Imp Cobblestone 9" bowl, electric all the way**
- _____ 153. AO-N Rose Show 8 ¾" bowl, very nice pastels
- _____ 154. **P-N Roes Show 8 ¾" bowl, always in demand**
- _____ 155. PO-Dugan Garden Path Vt. 9 ½" ICS bowl, Soda Gold exterior
- _____ 156. **P-N Good Luck Vt. 9" plate, BW exterior, pretty on both sides**
- _____ 157. B-N Good Luck 8 ¾" bowl, alluring electric iridescence
- _____ 158. **P-N Good Luck PCE bowl, BW exterior, classic carnival iridescence**
- _____ 159. P-N Good Luck PCE bowl, BW exterior, multi electric
- _____ 160. **G-N Good Luck Vt. PCE bowl, BW exterior, quite nice**
- _____ 161. Cobalt B-N stippled Good Luck PCE bowl, eye catching colors
- _____ 162. **Electric B-N Good Luck PCE bowl**
- _____ 163. B-N Good Luck PCE bowl, totally different iridescent effect
- _____ 164. **M-N Good Luck PCE bowl, lovely pastels in center**
- _____ 165. Pumpkin M-N Good Luck PCE bowl, a bouquet of colors
- _____ 166. **M-N Good Luck PCE bowl, hot pinks, blues, yellows**
- _____ 167. M-N stippled Good Luck PCE bowl, pinks and greens
- _____ 168. **M-Fenton Dragon and Lotus 8" ICS bowl, just a knockout**
- _____ 169. M-Floral and Grape water pitcher, CRE top
- _____ 170. **Superb M-Floral and Grape 7 pc water set, well matched and a winner!**
- _____ 171. B-Floral and Grape 5 pc water set, excellent color on this set
- _____ 172. **Nice M-N Grape and Cable 7 pc water set, above average**
- _____ 173. M-Blackberry Block tankard water pitcher, pretty and desirable
- _____ 174. **M-Blackberry Block tumbler, very nice**
- _____ 175. Exceptional M-Imp Grape 7 pc water set, find one better!
- _____ 176. **P-Maple Leaf water pitcher**
- _____ 177. P-Maple Leaf tumbler
- _____ 178. **B-Maple Leaf tumblers, 5 x \$**
- _____ 179. Crystal-N Enamel decorated 7 pc water set, not iridized but splendid
- _____ 180. **M-enamel decorated Windflower (also called Clover) tankard water pitcher, scarce**
- _____ 181. M-enamel decorated Chrysanthemum bulbous water pitcher, beautiful
- _____ 182. **P-Fenton Paneled Dandelion tankard water pitcher, very scarce handle on seam variant!**
- _____ 183. Scarce P-N Peacock at Fountain 7 pc water set, pieces are well matched
- _____ 184. **Green-Cambridge Double Star 7 pc water set, not often seen**
- _____ 185. Pentultimate B-N Peach 7 pc water set, if you ever wanted the best matching set in this pattern, this one is it
- _____ 186. **M-N Grape and Gothic Arches 7 pc water set**
- _____ 187. Super M-Imp Poinsettia milk pitcher
- _____ 188. **P-Imp Six-Sided candlestick, very scarce and pretty**
- _____ 189. Smoke-Imperial Grape decanter with stopper, probably not the old one
- _____ 190. **Radium P-God and Home water pitcher, contemporary and gorgeous**
- _____ 191. B-Blackberry miniature compote, minor flaw on one point of base
- _____ 192. **M-Blackberry miniature compote, great detail**
- _____ 193. Electric P-N Peacock at Fountain spooner, a stunning piece
- _____ 194. **P-N Singing Birds spooner, tough to come by**
- _____ 195. P-N Town Pump, a trophy piece
- _____ 196. **M-Basket, 5 ½" handled, Basketweave pattern**
- _____ 197. G-N Three Fruits 9" plate
- _____ 198. **W-Dugan Grape Delight rosebowl, chip on foot**
- _____ 199. A-N Three Fruits 8 ½" plate, colorful fruit
- _____ 200. **RARE Marigold on Custard-Rose Show 9 3/8" plate, loaded with pinks, a TRUE Northwood rarity, with just a handful known. The premier piece in this sale.**
- _____ 201. P-Dugan Grape Delight nut bowl, worn center
- _____ 202. **P-N Grape and Cable spooner, bit of roughness on thumbprint**
- _____ 203. P-N eight-sided Bushel basket
- _____ 204. **M-Beaded basket**
- _____ 205. B-Fenton Blackberry Spray 6 ¾" hat
- _____ 206. **M-Stag and Holly 8" spatula footed bowl**
- _____ 207. B-Stag and Holly 8" spatula footed bowl, pretty in center
- _____ 208. **Yellow Amber-Dragon and Lotus 8" ICS bowl**
- _____ 209. Powder B-Horse Medallion 6 ½" ICS bowl, quite nice
- _____ 210. **B-Horse Medallion 8" JIP, ball footed bowl, neat shape**

- _____ 211. B-Horse Medallion ball footed nut bowl, nice iridescence
- _____ 212. **Dark M-Australian Diamond Cut 8" rosebowl, scarce**
- _____ 213. BA-Australian 40 Point Star (exterior pattern) ruffled compote, plain interior
- _____ 214. **A-Persian Medallion rosebowl**
- _____ 215. PO-Dugan Pinched Swirl 6" vase
- _____ 216. **M-Mary Ann two handled vase**
- _____ 217. Purple-Dugan Flower and Beads 7 1/4" plate, art glass iridescence on obverse
- _____ 218. **W-Dugan Puzzle banana bowl shaped stemmed bonbon, nice pastels**
- _____ 219. B-Dugan Apple Blossom Twigs 9" plate
- _____ 220. **Scarce P-Dugan Grape Arbor fruit bowl, radium borders**
- _____ 221. M-Dugan Butterfly and Tulip 12" 2-sides up bowl, scarce shape, great pressing
- _____ 222. **Red-Fenton Open Edge 2-row 6 1/4" JIP basket**
- _____ 223. P-Imp Grape 11" fruit bowl, electric, I guess!!!
- _____ 224. **Rare M-Iris and Herringbone 8" round bowl with Badcock Furniture advertising on base**
- _____ 225. P-Imp Grape 5" round bowls, 3 x \$
- _____ 226. **Rich M-Imp Double Dutch 9" footed bowl, as pretty as I've seen**
- _____ 227. Shriners Tobacco Leaf champagne glass, 1909
- _____ 228. **P-N Fruits and Flowers 9 3/4" PCE salad bowl, very, very scarce with the pie crust edge**
- _____ 229. Sweet M-N Wishbone 9 3/4" PCE, collar base bowl, eye candy
- _____ 230. **G-N Wishbone 9 1/2" PCE, collar base bowl**
- _____ 231. P-N Wishbone 9 1/2" PCE, collar base bowl, quite nice
- _____ 232. **P-Daisy Web tri-corner basket, crimped edge, rarely seen pattern**
- _____ 233. M-Persian Medallion 4 sides up bonbon
- _____ 234. **Sapphire-Blackberry Spray 6 1/2", 2-sides up hat**
- _____ 235. M-Zipper Loop lamp, 4 3/4" base, 8" tall, marigold top to bottom
- _____ 236. **Scarce Smoke-Imp Zipper Loop lamp, 4 3/4" base, 8" tall, beautiful, tiny chip on base rim**
- _____ 237. M-Zipper Loop lamp, 4 3/4" clear base, 8" tall
- _____ 238. **M-Fenton Peacock at Urn 8 3/4" bowl, excellent color**
- _____ 239. B-Fenton Peacock at Urn 9" bowl, also pretty
- _____ 240. **Pumpkin M-Fenton Peacock and Grape 9" bowl, yowza!**
- _____ 241. Fantastic M-Fenton Peacock at Urn 9 3/8" plate, breathtaking
- _____ 242. **Killer G-Fenton Peacock and Grape 8 1/2", 3 in 1 edge bowl, borders on electric**
- _____ 243. P-Fenton Peacock and Grape 8 1.2", 3 in 1 edge bowl, alluring iridescence
- _____ 244. **Fabulous B-Fenton Fantail 8 3/4" round, footed bowl**
- _____ 245. Splendid M-Fenton Thistle banana boat, the cream of the crop
- _____ 246. **Yellow Vas-Lotus and Grape 6 3/4" ball footed bowl**
- _____ 247. Rare B-Butterfly and Berry 7" giant rosebowl, dandy color and a tough one
- _____ 248. **P-Chrysanthemum/Windmill 9" scarce collar base bowl, a beauty**
- _____ 249. A-Dragon and Lotus 9", 3 in 1 edge bowl, abundant color all the way across
- _____ 250. **A-Fenton Concord 9" plate, one of the best of these scarce plates I've seen**

WATCH:  **Web Site: www.AWK-SHN.com**

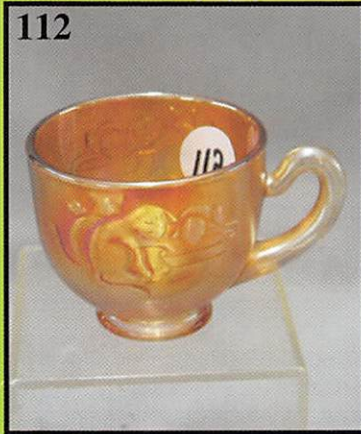
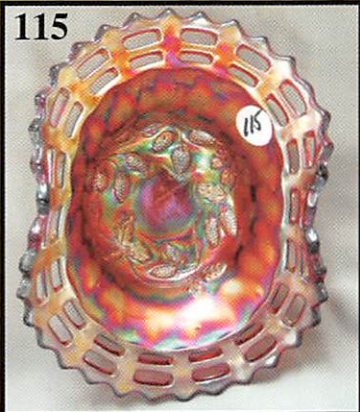
251. M-Millersburg Trout and Fly 9" bowl, a nice one
252. **P-Millersburg Seacoast pin tray, this one is something special**
253. Radium G-Millersburg Peacock and Urn Shotgun 7 1/4", 3 in 1 edge bowl, very scarce and lovely
254. **P-Millersburg Whirling Leaves 9 1/2" bowl, radium, pretty center**
255. G-Millersburg Blackberry Wreath 9" bowl
256. **P-Millersburg Peacock at Urn 10" ICS bowl, loaded with color**
257. P-Millersburg Peacock 6" ICS bowls, 6 x \$
258. **P-Millersburg Fleur-de-Lis 9" dome footed bowl, sparkling interior, nearly perfect sawtooth base**
259. A-Millersburg Hanging Cherries spooner and creamer, 2 x \$
260. **Rich M-N Peacock at Fountain 4 pc table set**
261. P-N Grape and Cable punch cups, 5 x \$
262. **M-N Grape and Cable pin dish whimsy from punch cup**
263. Red-Fenton Blackberry Spray 6 1/4" hat
264. **Red-Fenton Blackberry Spray 6 1/2" square hat**
265. Red-Fenton Open Edge 2-row 5 3/4" square hat
266. **Red-Fenton Two Flowers 8" spatula footed bowl, scarce one, flat flake on outside top rim**
267. Red-Fenton Stippled Rays 5 1/2" round bowl
268. **Red Reverse Amberina-Fenton Stippled Rays 6 1/2" bowl**
269. G-N Strawberry PCE bowl, BW exterior, pretty
270. **M-N Strawberry PCE bowl, BW exterior, also nice**
271. Pumpkin M-N stippled Grape and Cable Vt. PCE bowl, super pinks
272. **P-Imp Lustre Rose Fernery, exceptional color for these**
273. Pumpkin M-N Good Luck bowl, a sight to behold
274. **Near Emerald G-N Good Luck bowl, blues and more blues**
275. G-Imp Heavy Grape 8" plate, a very pretty green Imperial piece
276. **Stunning Near Emerald G-N Peacock at Urn 6" low ICS bowl, nearly flat enough to be a plate, lots and lots of blues**
277. G-N Wishbone 8" ball footed bowl, good looking piece
278. **Scarce G-N Wishbone 8 1/2" ball footed plate, beautiful**
279. Beautiful G-N Tornado 6" vase, super color, heat check/birth flaw in base
280. **G-N Good Luck 8 3/4" bowl, totally fuschia in the center**
281. G-N Grape and Cable hatpin holder, above average example
282. **G-N Grape and Cable cologne bottle with stopper**
283. G-N Grape and Cable cologne bottle with stopper
284. **G-N Grape and Cable dresser tray, very nice**
285. G-N Grape and Cable pin tray, better example
286. **G-N Grape and Cable powder jar with lid, very nice**
287. M-Orange Tree powder jar with lid, dark and nice
288. **Dark M-Orange Tree butter dish with lid, normal feet, but a '10' for color**
289. Dark M-Orange Tree spooner, chip on foot
290. **Blue-Kittens 2 1/2" toothpick/vase, very pretty inside**
291. White with Gold Trim-Peach 7 pc berry set, scarce and beautiful
292. **White with Blue Wash and Gold Trim-Dugan Dahlia 8 3/4" footed berry bowl, lovely pastels**
293. P-N Wishbone 10" chop plate, a big, beautiful plate
294. **Smoke-Imp Acanthus 10 1/4" plate, exquisite**
295. B-N Poinsettia and Lattice 8 3/4" bowl, electric hues
296. **B-Fenton Peacock at Urn 9" plate, electric highlights**
297. Lavender-N stippled Three Fruits 9 1/4" plate, pretty pastels

298. **P-N stippled Three Fruits 9" plate, multi electric**
299. M-N stippled Three Fruits 9 1/4" plate, pinks and blues
300. **A-Fenton Leaf Chain 9 1/2" plate, rare and wonderful**
301. Ice G-N Rose Show 9" bowl
302. **Olive G-Fenton Panther 9" master berry bowl, extremely scarce color**
303. Ice G Vas-Pony 8 1/2" bowl, stretchy, lots of blues and it glows
304. **Champagne-N Strawberry PCE bowl with unreal pastel colors**
305. G-N Strawberry PCE bowl, totally blue and purple center
306. **P-N Strawberry PCE bowl, BW exterior**
307. P-N Strawberry PCE bowl, electric all day long
308. **Pastel M-N stippled Strawberry PCE bowl, flaming pink center, blue border**
309. P-N stippled Strawberry PCE bowl, multi electric hues
310. **Ice B-N Hearts and Flowers PCE bowl**
311. B-N Hearts and Flowers PCE bowl, electric highlights
312. **M-N Hearts and Flowers PCE bowl, golden look, pretty center**
313. P-N Hearts and Flowers PCE bowl, classic carnival coloration
314. **B-Fenton Cherry Circles large bonbon, 2-sides up**
315. Remarkable Royal B-Fenton Stag and Holly 10", footed, ICS bowl, wowser!!
316. **Dark A-N Star of David and Bows 8" dome base bowl**
317. Red-Fenton Dragon and Lotus 8 1/2" ICS bowl
318. **Red stretch-12 1/4" charger, great onionskin effect and pretty**
319. A-Fenton Vintage (Grape) fernery
320. **Superb M-Imp Hattie 10 1/2" chop plate, hard to imagine one prettier**
321. Dynamite electric P-Imp Heavy Grape 11 3/4" chop plate, still picking my jaw up off the floor!
322. **M-N Strawberry 9" plate, extremely nice**
323. M-N Grape and Cable 9" plate, hot pinks I guess
324. **Magnificent M-N Good Luck 9 1/4" plate, top this!!!**
325. M-Fenton Lions 7" bowl, great strike and color
326. **M-Horse Medallion 7 3/4" plate, top notch**
327. M-N Grape and Cable humidor, perfect prongs, a dandy
328. **M-N Grape and Cable large open compote, dark and nice**
329. Dark P-N Grape and Cable cracker jar, chips on interior rim of base, still a beauty
330. **Light P-N Wishbone 8" footed bowl, beautiful iridescence, base glass leans toward lavender**
331. P-N Grape and Cable banana boat, as nice as they come
332. **BA-Big Butterfly hatpin**
333. BA-Flying Bat hatpin, flake on underside
334. **B-Persian Medallion 9 1/4" plate**
335. Custard-Nautilus banana boat, not iridized, undetermined age
336. **B-God and Home miniature butter dish w/ lid, creamer, sugar-contemporary**
337. Lot of 5 carnival glass pieces
338. **P-N Good Luck bowl, BW exterior, multi electric**
339. Ice G-N Hearts and Flowers bowl, ruffles are polished (and they did a good job!)
340. **Cobalt B-Fenton Horse Medallion 8", JIP, footed bowl**
341. M-Imp Long Hobstar 10" round bowl
342. **M-N Three Fruits 9" plate, pinks and blues**
343. M-N Grape and Cable Vt. 9" plate, nice pastels
344. **Lovely P-N Acorn Burrs punch cup**
345. Smoke-Imp Lustre Rose 10 3/4", round, flared, footed centerpiece bowl
346. **Amber-Imp Heavy Grape 11 1/4" chop plate, nice**
347. G-Fenton Diamond and Rib 7 3/4" vase, flake on body
348. **Aqua-Westmoreland Corinth 9 1/2" JIP vase**
349. M-Imp Ripple 5 3/4" vase, 4 1/2" opening
350. **M-Curled Rib 8", JIP vase, dark and nice**

📞 Call Today To Sell Your Fine Items

660-882-5292 Day • 660-882-5283 Evening

1 Mile North of I-70 on Hwy. 5, Exit 101



LARGE CARNI ESTATE A

SATURDAY - APRIL 11, 2015 at 9:00 am - p

Doors Open 7:30 A

Held at The Mickey Reichel Auction Gall

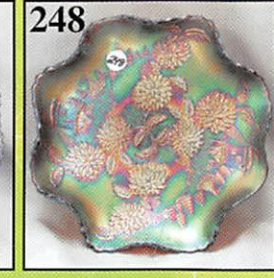
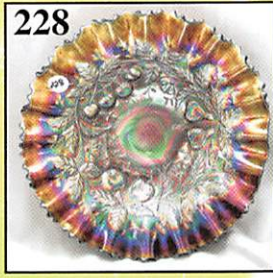
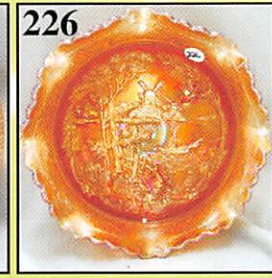
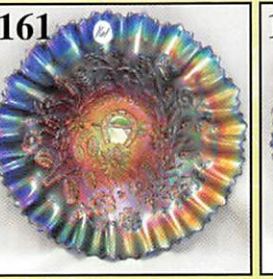
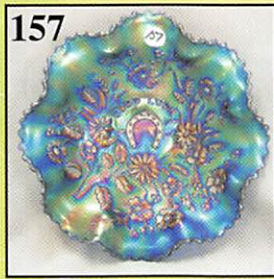
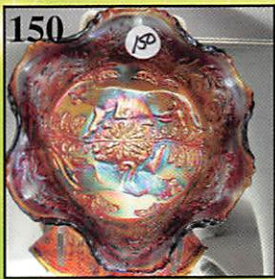
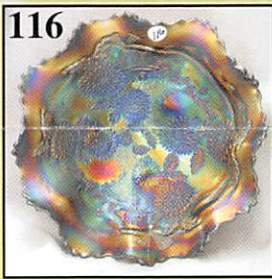
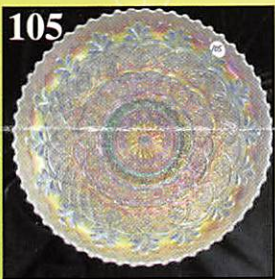
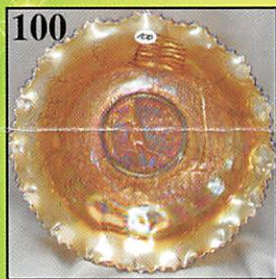
1440 Ashley Road Boo

COMBINING TOGETHER TWO LARGE ESTA

Free Photo tour w

Plan Now

NO BUYERS PREMIUM OPEN to



FESTIVAL GLASS AUCTION

Preview Friday April 10 12:00 Noon -- 5:00 PM

AM Auction Day

Every in the Same Location Over 37 Years

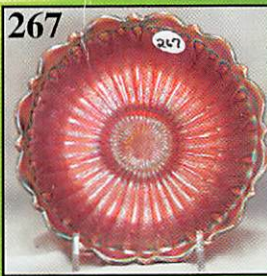
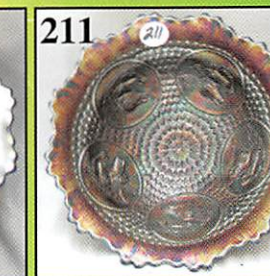
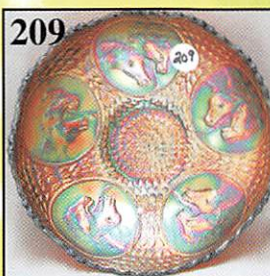
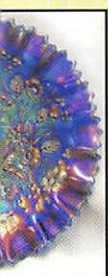
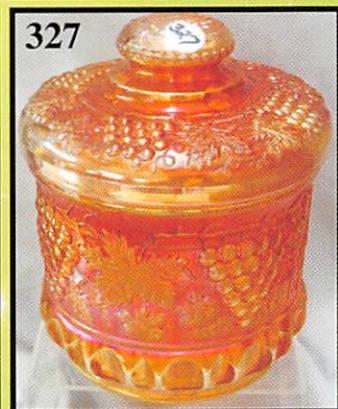
Springfield, Missouri USA

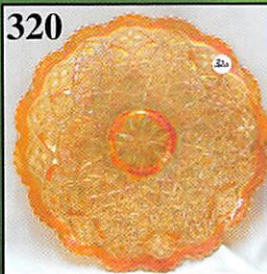
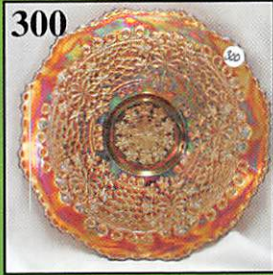
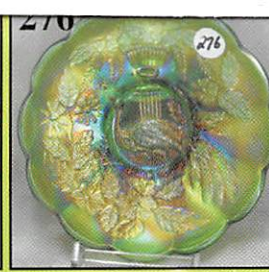
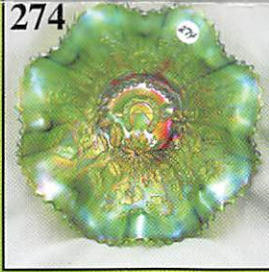
ITEMS FROM OKLAHOMA AND TENNESSEE

www.awk-shn.com

Go Attend

PUBLIC AUCTION ZIP ID #2175





Make Reservations EARLY at one of these local motels:

Days Inn: 660-882-8624

Comfort Inn: 660-882-5317

Super 8: 660-882-2900

Holiday Inn: 660-882-6882

Mickey Reichel Auction Center

1 Mile North of I-70 on Hwy. 5, Exit 101, Boonville, Missouri, 20 Miles West of Columbia, MO on I-70



TERMS: Cash or Good Check. VISA and MasterCard accepted.

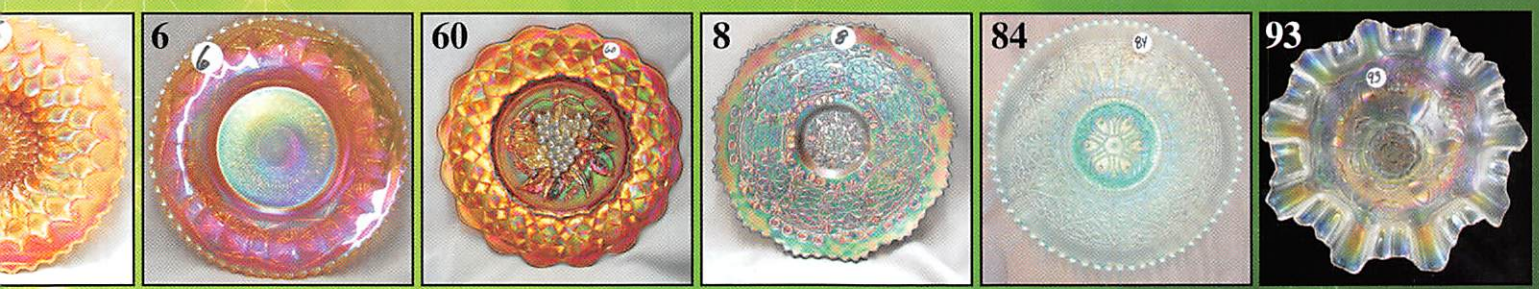
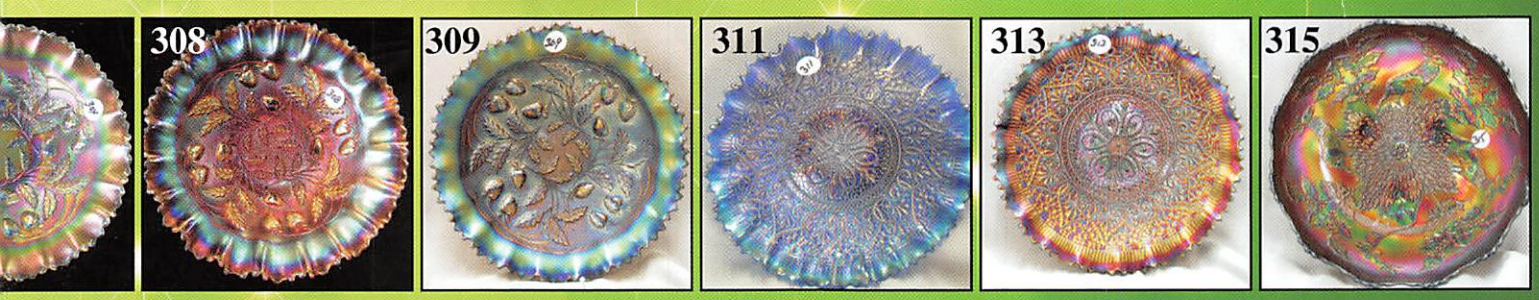
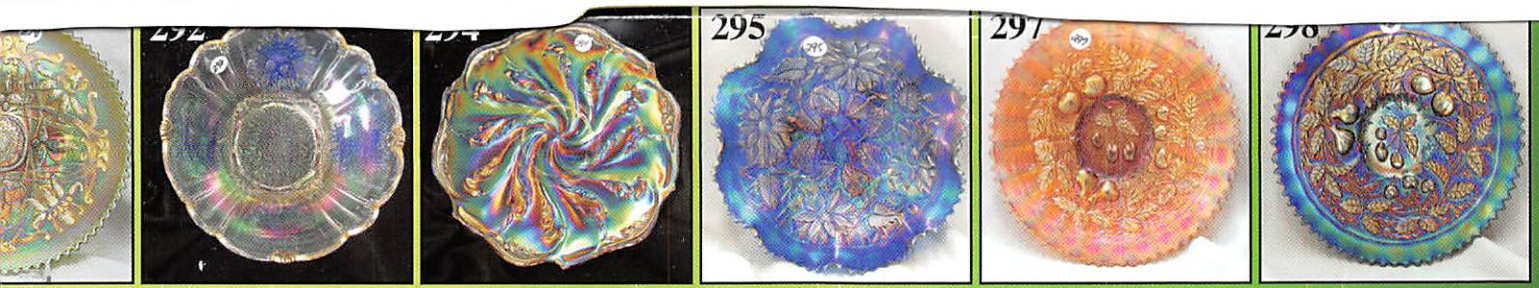


5% Clerking Fee on all purchases except for payment of cash or check.

Proper I.D. required.



**** No return on any items once (No Exc*



★★★★NO BUYERS PREMIUM★★★★

ABSENTEE BID POLICY:

PLEASE NOTE: There is a \$6 handling charge for each successful bid which will be added to the selling price for all write-in bids. This is in addition to the cost of postage, insurance and packing. Your write-in bid will be entered just as if you are present and bidding. Successful bidders will be notified in 1 to 3 days by the auctioneer (so be sure to include your phone number). Direct mail bids to Auctioneer Mickey Reichel, 18350 Hunters Ridge Ct., Boonville, MO 65233-2971. Terms: Cash or Check accepted with proper I.D. and Social Security Number and References. Announcements made day of the auction supercede all printed material. Not Responsible for Accidents or Sold Items. Call in Bids before Auction Welcome!

☛ Call for additional information: 660-882-5292 days
or 660-537-5200 evenings before 9:00 p.m.

FAX: 660-882-5292
(evening hours start FAX transmission after beep)
E-mail: mreichel@AWK-SHN.com
Web Site: www.awk-shn.com

*They leave the Auction Center * * **
(options)

SEE REVERSE FOR DETAILS