

1. M-Imp Grape decanter, no stopper
2. P-Fenton Diamond and Rib 10 vase
3. M-Ripple 7 1/2 vase
4. Super M-N Tree Trunk 10 vase
5. B-Fenton Rustic 8 3/4 vase
6. BA-Lined Lattice 10 vase
7. A-April Showers 10 1/2 vase
8. Lav-Imp Pansy 9 1/2 low ruffled bowl
9. Lav-Imp Grape 9 low ruffled bowl
10. P-Imp Pansy 8 3/4 bowl
11. Rich M-Imp Grape 8 3/4 bowl
12. P-Imp Shell and Sand 7 1/2 bowl, plain exterior
13. Elec P-Imp Scroll Embossed 7 3/4 bowl
14. Smoke-Imp Open Rose 5 1/2 bowl
15. P-Imp Lustre Rose 8 bowl, super color
16. G-Imp Open Rose 5 rosebowl
17. P-Imp Grape 11 bowl
18. Smoke-Imp Lustre Rose 11 fruit bowl, color on both sides
19. P-Imp Open Rose 9 deep, round bowl
20. Dark M-Imp Star and File 5 1/2 rosebowl
21. M-Fenton Panther 5 1/2 bowl
22. M-Fenton Panther 6 bowl
23. B-Fenton Panther 5 1/2 bowl, colorful cats
24. B-Fenton Panther 6 bowl
25. Vas Opal-Singleton Bailey Poppy Show ruffled vase
26. Satin Vas Opal-Singleton Bailey Poppy Show ruffled vase
27. Cranberry Opal-Singleton Bailey Poppy Show ruffled vase
28. Elec B-Singleton Bailey Poppy Show ruffled vase
29. BA-Singleton Bailey Heavy Iris CRE vase
30. Fenton Topaz Fairy Light, handpainted and artist signed
31. Fenton Red Hobnail Fairy light, marked Fenton
32. Fenton Purple Enameled Fairy light, handpainted and artist signed
33. Fenton Topaz Fairy Light, handpainted and artist signed
34. Fenton Cranberry Enameled decorated 8 vase, handpainted and artist signed
35. Fenton Vas Opal FAGCA 1980 advertising sign
36. Fenton Cranberry cased enamel decorated 7 pitcher, handpainted and artist signed
37. Fenton lav advertising sign
38. Fenton Willow green 6 1/2 vase, handpainted and artist signed
39. Fenton Vas Opal Fine Cut and Roses TCGC 1999 rosebowl
40. Fenton Willow green 9 vase, handpainted and artist signed
41. Fenton White Opal rectangular advertising sign
42. Fenton Purple tumble up, hand decorated and artist signed
43. Fenton Frosted Vas Opal advertising sign
44. Fenton Cranberry Mary Gregory 7 vase, hand decorated and artist signed
45. Fenton Vas Opal Persian Medallion 4 1/2 cuspidor
46. Fenton Willow green 8 handled basket, hand decorated and artist signed
47. Fenton Vas Opal 8 bud vase (or use it as a hatpin holder!)
48. Fenton Red w/ gold decoration 10 1/2 rolled rim plate, signed Reynolds
49. A-Fenton Scotch Thistle crimped top compote
50. A-Fenton whimsy compote
51. M-Fenton Stippled ray interior whimsy compote
52. M-Horse Medallion JIP, footed bowl
53. M-Fenton Peacock at urn compote
54. M-Fenton Heart and Vine 7 1/2, CRE bowl
55. P-Dugan Question Marks stemmed bonbon
56. Scarce Lav-Fenton Panther 5 1/2 bowl
57. M-Dugan Question Marks 6 1/2 crimped edge compote
58. B-Fenton Persian Medallion card tray shape bonbon
59. PO-Dugan Starfish 7 banana boat compote
60. P-Fenton Peacock and Grape 9, 3 in 1 bowl, very lovely
61. BA-Australian Butterfly Bower 6 1/4, 12 ruffle bowl
62. M-Australian Butterfly Bower 6 1/4, 12 ruffle bowl
63. M-Australian Style 6 1/2, 12 ruffle bowl
64. M-Australian Trailing Flowers 7, deep, round bowl
65. BA-Australian Style w/ Lattice interior, 5 1/2 round bowl
66. M-Australian Bullrushes and Bush Orchids 8 1/4, 12 ruffle bowl
67. M-Australian Melon Rib 5 vase, excellent color
68. M-Australian Melon Rib 6 1/2 bulbous vase
69. M-Australian Melon Rib 5 1/2 vase
70. Amber-Australian Melon Rib 10 vase
71. Smoke-Australian 11 vase, rare shape and color, minor rim nicks
72. Dark P-Australian Gum Tips 9 1/2 vase
73. BA-Australian Band Diamond tumbler, scarce
74. M-Australian Paneled sugar basin
75. M-Australian Diamond sugar basin
76. M-Australian Block and Arches 6 1/2 pitcher, with chipped tumbler
77. M-Jain 9 1/2 fish vase
78. Superb M-Inwald Fleur de Lis 13 vase or 8 vase, choice A or B
79. P-Dugan 4, crimped top vase, scarce and nice
80. P-N Tornado 6 1/4 vase, collector favorite
81. M-N Tornado 6 vase, scarce
82. M-N Daisy and Drape 6 1/2 vase, turned in top
83. Red Stretch-Imp Smooth Panels 9 1/4 vase, a beauty
84. Elec P-N Tree Trunk 13 1/4 mid-size vase, 11 front height, a dazzler
85. BA-Australian Kingfish w/ Wattle Flowers 9 1/2, 12 ruffle bowl, awesome
86. BA-Australian Emu 10, 8 ruffle bowl, unusual interior finish
87. BA-Australian Emu 5 1/2, 8 ruffle bowl
88. M-Australian Emu 5 1/2, 8 ruffle bowl
89. BA-Australian Pinups 9 1/2, 16 ruffle bowl
90. BA-Australian Swan and Christmas Bells 9 1/4, 16 ruffle bowl, nice pressing
91. BA-Australian Swan and Christmas Bells 5 1/4, 12 ruffle bowl
92. M-Australian Swan and Christmas Bells 5 1/4, 12 ruffle bowl
93. M-Australian large Kangaroo 9 1/2, 16 ruffle bowl, great color
94. M-Australian small Kangaroo 5 1/4, 12 ruffle bowl
95. BA-Australian Fishscales 5 1/2, 12 ruffle bowl
96. M-Australian Fishscales 5 1/2, 12 ruffle bowl
97. BA-Australian Butterfly Bush and Christmas Bells 7, ICS compote
98. M-Australian Butterfly Bush and Christmas Bells 7 3/4, 12 ruffle compote
99. M-Australian Hobnail and Cane 9 1/2, 12 ruffle compote
100. RARE BA-Australian Kiwi dome-ftd. 9 deep, round bowl
101. M-Australian Kiwi 5 1/2, 8 ruffle bowl, also very tough to find
102. BA-Australian plain interior 6 1/2, 12 ruffle bowl, Broken Chain exterior
103. BA-Australian Shrike 9 1/2, 12 ruffle bowl, beautiful
104. BA-Australian Shrike 5 1/4, 12 ruffle bowl
105. M-Australian Shrike 9 1/4, 12 ruffle bowl
106. M-Australian Shrike 5 1/2, 12 ruffle bowl
107. BA-Australian Magpie 9 3/4, 8 ruffle bowl
108. M-Australian Magpie 9 3/4, 8 ruffle bowl, well detailed
109. M-Australian Magpie 5 3/4, 8 ruffle bowl
110. Ice G-N Grape and Cable centerpiece bowl with cupped in points, great example
111. P-N Acorn Burrs 7 pc berry set, well matched
112. P-N Grape and Cable small size punch bowl and base
113. P-N Grape and Cable 7 pc water set, well matched
114. P-N Grape and Cable large covered compote
115. G-Fenton Grape and Cable spatula footed 9 plate
116. P-N Grape and Cable Vt. 9 plate, multi electric
117. P-N Grape and Cable 8 1/2 plate, fabulous
118. M-N Grape and Cable humidor w/ lid
119. P-N Grape and Cable hatpin holder
120. M-Imp Heavy Grape 11 1/2 chop plate
121. Green Opal-Pearl and Flowers, footed tri-corner bowl, not iridized
122. Plum Opal-Fenton Hobnail 8 bowl, not iridized
123. P-Town Pump and Trough, contemporary
124. AO-Fenton Hobnail 3-lily epergne, marked Fenton in oval, scarce

125. M-Dugan Apple Blossom 7 bowl
126. **M-Dugan Lattice and Points 7 ½ bowl w/ daisy center, made from hat mold**
127. B-Enameled Cherries 7 pc water set
128. **P-N Dandelion tankard 7 pc water set**
129. P-Floral and Grape 7 pc water set, not often seen in purple
130. **M-Floral and Grape 7 pc water set**
131. B-Floral and Grape 5 pc water set, outstanding pitcher
132. **P-N Acorn Burrs 7 pc water set, pretty and well matched**
133. A-Fenton Captive Rose 8 ¾ bowl
134. **G-Fenton Captive Rose 8 ½, 3 in 1 bowl, a pretty one**
135. B-Fenton Captive Rose 8 ½, 3 in 1 bowl, extremely nice
136. **A-Fenton Thistle 8 ¾, 3 in 1 bowl, super nice**
137. G-Fenton Thistle 9 bowl
138. **A-Fenton Peacock at Urn 3 in 1 edge bowl, scarce shape and attractive**
139. Deep A-Fenton Vintage fernery
140. **G-Fenton Orange Tree 8 ½, 3 in 1 bowl**
141. G-Fenton Vintage 8 ½, 3 in 1 bowl
142. **B-Fenton Heart and Vine 8 ½ bowl, no straw mark in center!**
143. P-Fenton Stippled Rays 9, round, deep bowl
144. **B-Fenton Two Fruits divided bonbon**
145. B-Fenton Birds and Cherries card tray bonbon
146. **B-Fenton Leaf Chain 7 bowl**
147. B-Dugan Grape Delight rosebowl, clean feet
148. **A-Dugan Double Stem Rose 8 ½, 10 ruffle bowl**
149. P-N Grape and Cable 8 ¾ bowl
150. **M-N Grape and Cable 9 plate, BW exterior**
151. B-Fenton Butterfly and Berry 9 ¾ round master berry bowl,
152. **A-Dugan Windflower 8 ½ bowl**
153. Radium A-Mlbg Whirling Leaves 9 ½ bowl, pretty, pretty, pretty
154. **M-Mlbg Fleur De Lis 10 bowl, quite nice**
155. M-Mlbg Blackberry Wreath 8 ¾ bowl
156. **P-Mlbg Rays and Ribbons 9 ½ bowl**
157. G-Mlbg Mayan 8 ¾, ICS bowl, good color
158. **M-Mlbg Primrose 10 bowl, pretty satin finish**
159. P-Mlbg Holly Whirl 10 bowl, great color
160. **Ice B-N Nippon PCE bowl**
161. M-N Good Luck PCE bowl, rib exterior
162. **P-N Good Luck bowl, BW exterior**
163. PO-Dugan Ski Star 10 ¾ bowl
164. **PO-Dugan Wide Rib squatty 4 ½ vase, 6 opening**
165. B-Fenton Vintage 7 ½ plate, radium dazzler
166. **M-Imp 474 Punch bowl, base, ten cups, look good together**
167. M-Dugan Mary Ann vase
168. **B-N Rose Show 9 plate**
169. M-N Three Fruits 9 plate
170. **A-Fenton Three Fruits 9 ¼ plate, good looking example**
171. M-Fenton Stag and Holly 11 footed bowl
172. **P-Dugan Victorian 11 bowl**
173. B-Fenton Panther 5 round berry bowl
174. **G-Cambridge Inverted Feather cracker jar with lid**
175. M-Australian Kookaburra 9, 8 ruffle advertising bowl, VERY RARE
176. **BA-Australian Pinups 9, 16 ruffle bowl**
177. BA-Australian Kingfisher and Wattle Blossom 5 ¼, 12 ruffle bowl
178. **M-Australian Swan w/ Christmas Bells 5 ½, 12 ruffle bowl**
179. BA-Australian Magpie 5 ¾, 8 ruffle bowl
180. **M-Australian Magpie 5 ¾, 8 ruffle bowl**
181. M-Australian Butterfly Bush and Flannel Flowers 10, 12 ruffle large compote
182. **M-Australian Butterfly Bush and Flannel Flowers 9, ICS compote, soooooo nice**
183. BA-Australian Butterfly Bush and Flannel Flowers 9 ¼, ICS compote, fantastic iridescence
184. **BA-Australian Butterfly Bush 9, ICS large compote**
185. BA-Australian Butterfly Bush 8 ½, 12 ruffle large compote
186. **BA-Australian Butterfly Bush 7 ¾ salver**
187. M-Australian small Kangaroo 9 ½, 16 ruffle bowl
188. **M-Australian small Kangaroo 5 ½, 12 ruffle bowl**
189. BA-Australian small Kangaroo 9 ½, 16 ruffle bowl
190. **BA-Australian small Kangaroo 5 ½, 12 ruffle bowl**
191. Fantastic BA-Australian Emu 9 round, scalloped edge compote
192. **BA-Australian Emu 9 ½, 8 ruffle compote**
193. B-N Peacock at Fountain tumbler
194. **P-Imp 474 tumbler**
195. B-Paneled Dandelion tumbler
196. **G-N Singling Birds tumblers, 3 x \$**
197. P-N Raspberry tumbler
198. **B-Orange Tree shaving mug, beautiful**
199. P-Dugan Fisherman's mug
200. **Rare Ice B-N Raspberry compote, less than a handful known**
201. W-N Hearts and Flowers compote
202. **W-Hammered Bell light shade**
203. Superb W-Dugan Persian Garden 11 ICS bowl
204. **W-Dugan Big Basketweave 4 ¾ vase, exquisite**
205. W-Fenton Pond Lily card tray bonbon, stunning
206. **Ice B-N Fruits and Flowers stemmed bonbon, excellent**
207. W-Dugan Constellation compote
208. **W-Fenton Rustic 9 ¼ vase**
209. Lime G-N Tree Trunk 11 vase, scarce color and pretty
210. **Ice B-N Thin Rib 11 ¼ vase**
211. Ice G-N Thin Rib 11 ¾ vase
212. **Celeste-Fenton Panels 11 vase**
213. Ice G Vas-Fenton Panels 12 vase
214. **Aqua-Westmoreland Corinth 9 JIP vase**
215. AO-N Four Pillars 11 vase, good feet, pretty overlay
216. **Odd Aqua-N Tree Trunk 6 ½ squatty vase, very unusual find**
217. Elec P-Imp Ripple 9 ¼ vase
218. **Elec P-Imp Ripple 10 ¾ vase, 8 ¼ monster opening, scarce 4 base**
219. Gorgeous B-Fenton Rustic 18 ½ funeral vase, tops the charts!
220. **Very scarce-Fenton Diamond and Rib 19 funeral vase, plunger base, one of the best I've seen!**
221. M-Rococo 4 3/8 vase
222. **Aqua-Imp Ripple 11 vase, really leans toward sapphire, very scarce color**
223. Elec P-N Tree Trunk 13 ½ mid-size vase, pure eye candy
224. **Rare Tangerine-Fenton April Showers 12 ½ vase, most unusual**
225. P-Imp Beaded Bullseye 10 ¾ vase, no slouch
226. **G-N Tree Trunk 13 ½ mid-size vase**
227. P-N Tree Trunk 14, mid-size plunger base vase, lots of blues, pinks and golds
228. **G-N Tree Trunk 13, mid-size plunger base vase**
229. G-Fenton Peacock Tail 7 Horlacher advertising bowl
230. **Pastel AO-N Rose Show bowl, outstanding piece**
231. AO-N Peacocks 9 bowl, nice pastels, good color on birds
232. **Sapphire Opal-Fenton Blackberry Spray 6 hat**
233. Vas Opal-Fenton Water Lily 6, footed bowl
234. **M-N Hearts and Flowers 9 plate, well above average**
235. Stunning P-N Peacocks bowl, great eye appeal
236. **Pastel M-N Peacocks PCE bowl**
237. Pastel M-N Peacocks bowl
238. **B-Fenton Lotus and Grape 9 bowl, scarce color and fine example**
239. P-Mlbg Peacock 5 ½ flared berry bowl
240. **B-N Peacocks 9 ¼ plate, electric highlights**
241. M-Fenton Bouquet 7 pc water set
242. **B-Enameled Cherries 7 pc water set**
243. G-Cambridge Inverted Strawberry 6 ½, round bowl, marked Near-Cut
244. **Powder B-Fenton Peacock at Urn bell shape compote**
245. M-Imp Starspray 6 round, flared bowl
246. **Dark A-N Star of David and Bows 8 ¼, dome base bowl, very nice**
247. M-Crackle car vase with metal holder
248. **Aqua-Scales 6 ¼ plate, very nice**
249. B-Fenton Orange Tree hatpin holder
250. **BA-Australian Kookaburra w/ Waratah and Flannel Flower 11 float bowl, note unusual bullet edge**
251. M-Australian Kookaburra w/ Butterfly and Waratah 9 ½,

- 12 ruffle bowl, great detail
252. **M-Australian Kookaburra w/ Waratah 5 ½, 12 ruffle bowl**
253. BA-Australian Kookaburra w/ Butterfly and Waratah 9 ½, 12 ruffle bowl, super
254. **BA-Australian Kookaburra w/ Waratah 5 ½, 12 ruffle bowl**
255. BA-Australian large Kangaroo 9 ½, 16 ruffle bowl
256. **M-Australian large Kangaroo 9 ½, 16 ruffle bowl**
257. Vas-Fenton Grape and Cable 7 ¾ bowl
258. **Yellow Vas-Fenton Orange Tree 8 ¾ bowl**
259. Vas-Fenton Acorn 7 ½ bowl
260. **Vas-Fenton Dragon and Lotus 9 bowl**
261. Vas-Fenton Persian Medallion four sides up bonbon
262. **Vas Opal Fenton Blackberry Spray 6 hat, striking radium treatment**
263. Vas-Fenton Orange Tree standard mug
264. **Vas Opal-Fenton Peacock and Grape 8 spat ftd bowl**
265. Vas-Fenton Lotus and Grape 6 ¾ footed bowl
266. **Vas Opal-Fenton Strawberry bonbon, very scarce**
267. Vas-Fenton Peacock and Dahlia 6 ¾, ICS bowl
268. **Lime-Fenton Floral and Grape water pitcher, ought to glow, looks like it should**
269. Vas-Fenton Horse Medallion JIP footed bowl
270. **G-Fenton Horse Medallion 7 ICS, footed bowl**
271. Electric G-Fenton Horse Medallion 8 footed bowl, what a piece!
272. **B-Fenton Horse Medallion 8 footed bowl**
273. Wonderful B-Fenton Dragon and Lotus 9 bowl
274. **Dark Amber-Fenton Dragon and Lotus 9 bowl, a looker**
275. A-Fenton Heart and Vine 8 ½, 3 in 1 edge bowl
276. **Dark G-Fenton Stag and Holly 8 spatula footed bowl**

277. P-N Butterfly four sides up bonbon, not lacking in color
278. **P-N Acorn Burrs 4 pc table setting, super set**
279. P-N Strawberry 8 ½ bowl. BW exterior, lush rainbow iridescence
280. **Electric G-N Wild Rose nut bowl, close to emerald green**
281. PO-Dugan Fanciful 9, low ten ruffle bowl
282. **Cobalt B-Fenton Peacock and Dahlia 6 ½, ICS bowl**
283. Elec B-N Fruits and Flowers 7 ½ bowl, oh my!
284. **P-N Good Luck PCE bowl, electric hues**
285. Dark M-Dugan Pony 8 ½ bowl
286. **Radium M-Dugan Pony 9 ½ plate, purchased looonng ago and believed to be old**
287. Pink Opaque-Dugan Pony 9 plate, contemporary
288. **Sapphire-N Good Luck ruffled bowl, looks sapphire across the room**
289. Elec B-N PCE bowl
290. **G-N Good Luck Vt PCE bowl, BW exterior**
291. Pumpkin M-N Good Luck bowl
292. **G-N Wishbone 9 ½ PCE bowl, BW exterior**
293. P-N Sunflower 8 ¾, spatula footed bowl
294. **P-N stippled Three Fruits 9 ¼ plate**
295. AO-N Drapery rosebowl
296. **P-Dugan Beaded Basket handled basket**
297. Elec B-N Fruits and Flowers stemmed bonbon
298. **P-Dugan Question Marks 7 plate, color on back is awesome**
299. Elec P-N Wishbone 8 ½, footed bowl
300. **M-Australian Water Lily and Dragonfly 11 float bowl, RARE and gorgeous**
301. BA-Australian Emu w/ Butterfly and Waratah 10, 8 ruffle bowl
302. **BA-Australian Emu w/ Waratah 5 ½, 8 ruffle bowl**

WATCH:  **Web Site: www.AWK-SHN.com**

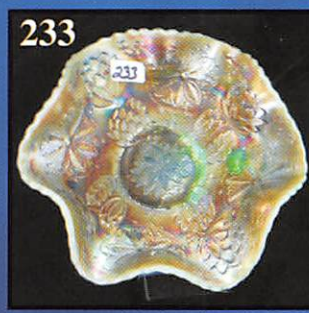
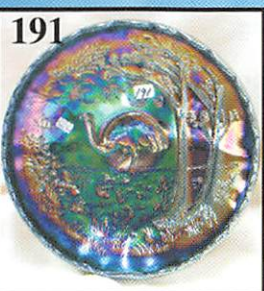
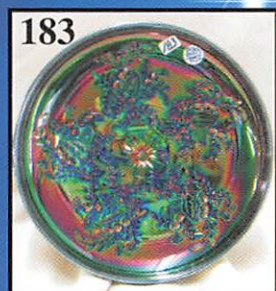
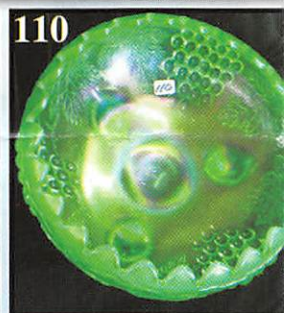
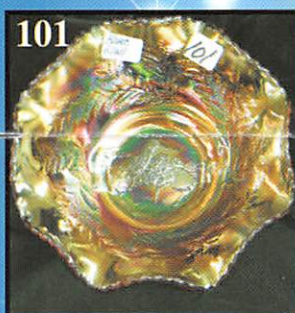
- 303. M-Australian Emu w/ Butterfly and Waratah 9 3/4, 8 ruffle bowl
- 304. **BA-Australian Emus w/ Waratah, 5 1/2, 8 ruffle bowl**
- 305. BA-Australian Kingfisher and Wattle Spray, 9 1/2, 12 ruffle bowl
- 306. **BA-Australian Kingfisher and Wattle Spray, 5 1/4, 12 ruffle bowl**
- 307. M-Australian Kingfisher and Wattle Spray 9 1/2, 12 ruffle bowl
- 308. **M-Australian Kingfisher and Wattle Spray, 5 1/2, 12 ruffle bowl, super piece**
- 309. BA-Australian Butterfly Bush and Waratah 9, 12 ruffle large compote
- 310. **M-Australian Butterfly Bush and Waratah 8 1/2, round scalloped large compote**
- 311. M-Imp 14 panel, 15 1/4 undertray
- 312. **M-Bo Peep mug**
- 313. Shriners Tobacco Leaf Champagne-1909
- 314. **AO-N Leaf and Beads rosebowl, outstanding overlay**
- 315. B-N round Bushel basket
- 316. **G-N 8-sided Bushel basket**
- 317. P-Four Flowers Variant 10 ICS bowl
- 318. **G-Four Flowers Variant 9 1/4 plate**
- 319. B-Dugan Roundup 9 plate
- 320. **G-Fenton Ten Mums 10 bowl**
- 321. B-Fenton Peacock at Urn 8 ICS bowl, way above average
- 322. **B-Fenton Feather Stitch 9 low ICS bowl**
- 323. BA-Dugan Heavy Grape 5 1/2 bowl, scarce pattern
- 324. **Aqua-Fenton Lotus and Grape 6 round, footed bowl**
- 325. B-Fenton Persian Medallion 6 low, round bowl, colorful
- 326. **G-Fenton Peacock Tail Delmar Garden advertising hat**
- 327. G-Fenton Peacock Tail General Furniture Co. advertising hat
- 328. **A-Fenton Feathered Serpent 6 tri-corner plate, a dandy**
- 329. Magnificent M-Fenton Orange Tree loving cup, find one better!
- 330. **B-Fenton Orange Tree loving cup, super nice**
- 331. Red-Fenton Orange Tree standard mug
- 332. **Red Slag w/ gold flecks-Fenton Orange Tree shaving mug**
- 333. G-Fenton Sailboats 6 bowl, tough color and nice
- 334. **Red-Fenton Sailboats 5 1/4 round, flared bowl, better example**
- 335. Red-Fenton Holly 5 1/2 hat
- 336. **Red-Fenton Holly 6 hat**
- 337. Red-Fenton Blackberry Open Edge 7 bowl
- 338. **Red-Fenton Persian Medallion four sides up bonbon**
- 339. Tangerine Opal-Fenton Blackberry Spray 6 1/4 hat, tough, tough color
- 340. **Ice Green Vas-Fenton 3 row Open Edge 9 1/2 2-sides up, wowser!**
- 341. MMG-Westmoreland Daisy Wreath 9 1/4 bowl
- 342. **Elec B-N Poppy pickle dish**
- 343. P-N Three Fruits 9 1/4 bowl, loaded with purples
- 344. **P-N Peacocks 9 bowl, electric hues**
- 345. Killer P-Dugan Dogwood Sprays ten ruffle jardiniere shape bowl
- 346. **P-Imp Lustre Rose fernery, superb**
- 347. P-Imp Open Rose 10 3/4 bowl, missing spot of irid in center
- 348. **P-Imp Open Rose 9 deep, round bowl, exquisite color**
- 349. P-Imp Scroll Embossed large compote, Curved Star exterior
- 350. **P-Imp Scroll Embossed 7 round scalloped bowl**
- 351. Elec P-Imp Grape 9 deep round bowl
- 352. **P-Imp Grape 5 round bowl**
- 353. P-Imp Heavy Grape 8 plate, a winner
- 354. **Jade Green-Fenton 20 1/2 funeral vase, Rib Optic interior, not iridized**
- 355. Cobalt B-Fenton 20 1/4 funeral vase, Rib Optic interior, not iridized
- 356. **Red-Fenton 18 1/2 funeral vase, Rib Optic interior, not iridized**
- 357. M-Imp Hobnail water pitcher, marked IG
- 358. **AO-Fenton Cactus 7 vase**
- 359. Ice G-covered bonbon
- 360. **BA-covered bonbon**

- 361. M-covered bonbon
- 362. **Celeste w/ black decoration-covered bonbon**
- 363. W-covered bonbon
- 364. **Russet-covered bonbon**
- 365. Sapphire-covered bonbon
- 366. **Vas-covered bonbon**
- 367. Celeste-covered bonbon
- 368. **Jade-covered bonbon**
- 369. Pinkish opal-covered bonbon, large chip on lid
- 370. **Celeste-covered bonbon**
- 371. M-Fenton puff box (part of dresser set)
- 372. **Fenton-Celeste enameled covered bonbon, hand decorated and artist signed**
- 373. P-Buffalo goblet, Gateway Carnival Glass Club 1979
- 374. **Ice B-Encore 1980 mini 7 pc Wine and Roses water set**
- 375. P-Mosser Cherry and Cable 5 pc mini water set
- 376. **Red-Inverted Strawberry 7 pc mini punch set, Lincoln Land 1979**
- 377. 32 long carnival glass beaded necklace
- 378. **Lot of 5 mini salts, sells as lot**
- 379. Ice Green Opal-Fenton 4 lily epergne, 15 1/2 tall, marked Frank Fenton
- 380. **Spruce Green-Fenton Birth of Savior hurricane lamp**
- 381. Spruce Green-Fenton Birth of Savior 9 1/4 plate
- 382. **Fenton Leaves and Vine 8 1/2 art glass vase**
- 383. Fenton Ivory Santa, #257
- 384. **Fenton Ivory green decorated Santa**
- 385. Fenton Ivory red coat Santa
- 386. **Fenton Blue Crystal 19 tall enamel decorated lamp, electric**
- 387. Fenton Pink Opal 19 tall lamp, electric
- 388. **Fenton Teal 25 tall table lamp w/ prisms, electric**
- 389. Fenton Red carnival 25 tall table lamp w/ prisms, electric
- 390. **Fenton Red carnival 25 tall table lamp w/ prisms, electric**
- 391. Fenton ice blue opal carnival 22 tall GWTW lamp, electric
- 392. **Fenton turquoise 22 tall GWTW lamp, electric**
- 393. M-Diamond and Rib JIP 5 vase, LeVay 1983
- 394. **M over Custard HOACGA 1983 loving cup**
- 395. M-Elks BPOE 5 1/2 plate, Joe St. Clair, in original box
- 396. **B-St. Clair 5 1/2 small Grape plate**
- 397. Red-MIMI Farmyard 9 1/2 ruffled bowl
- 398. **B-Singleton Bailey Farmyard 9 1/2 ruffled bowl**
- 399. G-Singleton Bailey Farmyard cuspidor
- 400. **P-MIMI Farmyard 9 1/4 ruffled bowl**
- 401. Ice B-Imp Open Rose 10 3/4 chop plate, marked IG
- 402. **Fenton-Red hobnail cuspidor**
- 403. PO-Seacoast 1982 ACGA cuspidor
- 404. **G-Seacoast 1983 ACGA cuspidor**
- 405. Plum Opal-Inverted Strawberry FAGCA 1984 souvenir cuspidor
- 406. **G-Good Luck 9 bowl, reproduction**

LOTS 407-424 are a selection of mostly boxed Fenton items, including miniature Farmyard baskets, small, medium and large Christmas trees, penguins, one snowman, plus CRE candle plates. Great opportunity to buy discontinued items from Fenton that are basically new old stock.

 **Call Today To Sell Your Fine Items**
660-882-5292 Day
660-882-5283 Evening

1 Mile North of I-70 on Hwy. 5, Exit 101



OUR 24TH NEW YORK GLASS EXTRA

SATURDAY - JANUARY 10, 2015 at 9:00 am -
SNOW DAY: Sunday - January 11, 2015
Doors Open 7:30 AM
Held at The Mickey Reichel Auction Gallery
1440 Ashley Road, Boca Raton, FL 33433

The Lifetime Collection of Masterpieces
Free Photo tour with
Plan Now!

NO BUYERS PREMIUM OPEN to ALL

YEARS CARNIVAL RAVAGANZA

Preview Friday Jan. 09 12:00 Noon -- 5:00 PM
 5 at 9:00 am • NO CANCELLATIONS

AM Auction Day

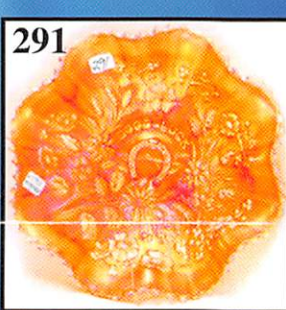
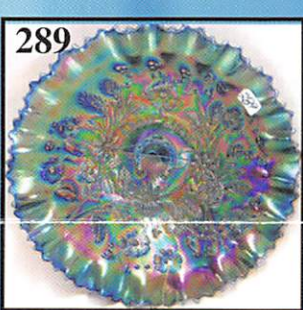
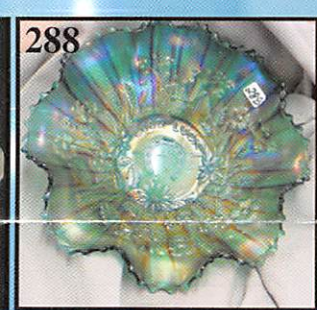
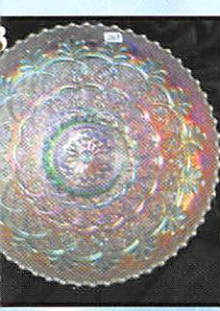
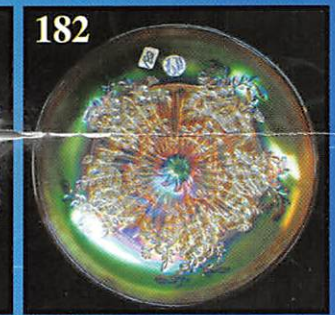
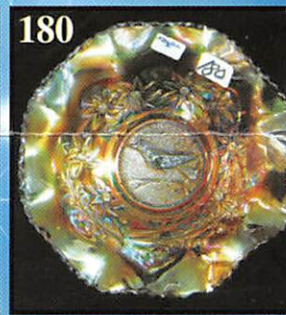
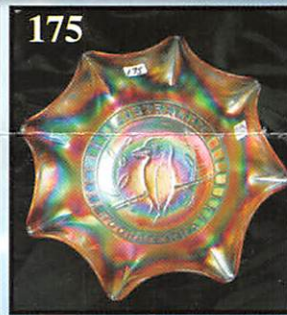
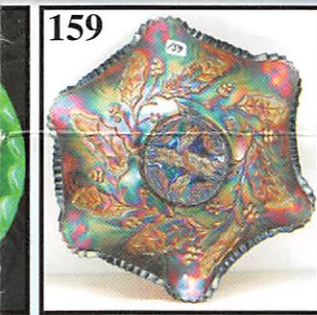
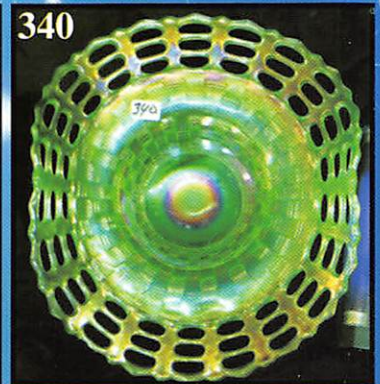
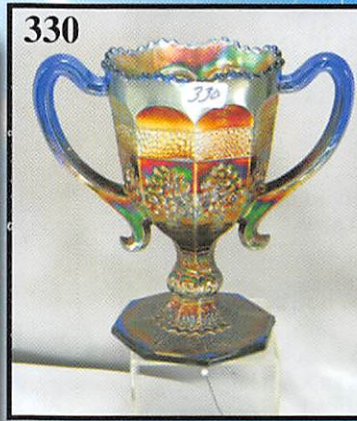
ery in the Same Location Over 37 Years
 nville, Missouri USA

zi and Jeff Thrasher of Texas.

www.awk-shn.com

To Attend

PUBLIC AUCTION ZIP ID #2175





301



302



303



305



306



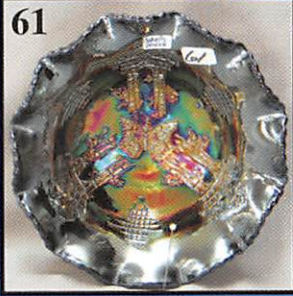
97



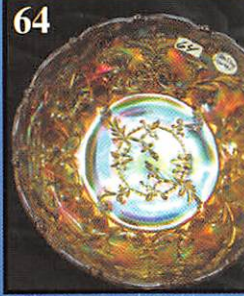
334



345



61



64



208-209



210-211



212-213



214



124



263



84



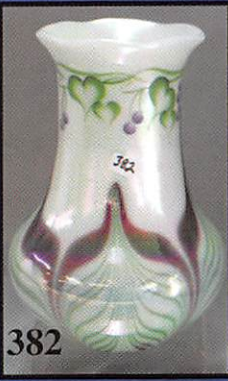
78



70



388-389



382





379



356

☛ **Make Reservations EARLY** at one of these local motels:
Days Inn: 660-882-8624
Comfort Inn: 660-882-5317
Super 8: 660-882-2900
Holiday Inn: 660-882-6882

Mickey Reichel Auction Center
 1 Mile North of I-70 on Hwy. 5, Exit 101, Boonville, Missouri, 20 Miles West of Columbia, MO on I-70

 **TERMS:** Cash or Good Check, VISA and MasterCard accepted. 

5% Clerking Fee on all purchases except for payment of cash or check.
 Proper I.D. required.

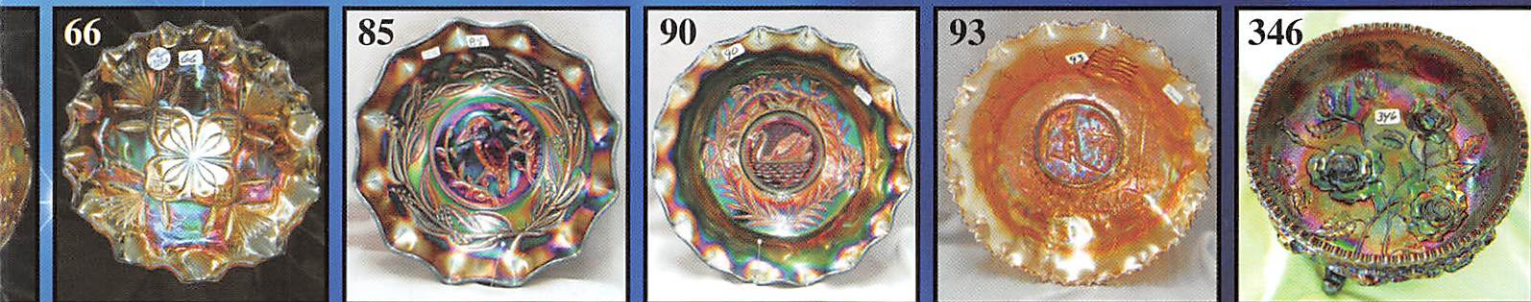


266



129

**** No return on any items once (No Exc*



★★★NO BUYERS PREMIUM★★★

ABSENTEE BID POLICY:
 PLEASE NOTE: There is a \$6 handling charge for each successful bid which will be added to the selling price for all write-in bids. This is in addition to the cost of postage, insurance and packing. Your write-in bid will be entered just as if you are present and bidding. Successful bidders will be notified in 1 to 3 days by the auctioneer (so be sure to include your phone number). Direct mail bids to Auctioneer Mickey Reichel, 18350 Hunters Ridge Ct., Boonville, MO 65233-2971. Terms: Cash or Check accepted with proper I.D. and Social Security Number and References. Announcements made day of the auction supercede all printed material. Not Responsible for Accidents or Sold Items. Call in Bids before Auction Welcome!

☛ Call for additional information: 660-882-5292 days or 660-537-5200 evenings before 9:00 p.m.

FAX: 660-882-5292
 (evening hours start FAX transmission after beep)
 E-mail: mreichel@AWK-SHN.com
 Web Site: www.awk-shn.com

they leave the Auction Center * * *
 (options)

SEE REVERSE FOR DETAILS