

- _____ 1. M-Imp Ripple 6 ½" vase
- _____ 2. **M-Imp Ripple 7 ½" vase**
- _____ 3. Dark M-Imp Ripple 8" vase
- _____ 4. **M-Imp Ripple 8 ½" vase**
- _____ 5. M-Imp Ripple 10 ½" vase
- _____ 6. **M-Imp Ripple 10 ½" vase**
- _____ 7. M-Imp Ripple 10 ¾" vase, nice spout on this one
- _____ 8. **M-Imp Ripple 11 ¾" vase**
- _____ 9. M-Imp Ripple mid-size 12 ¾" vase, 4" base
- _____ 10. **M-Beaded Bullseye 11 ½" vase**
- _____ 11. M-Beaded Bullseye 10" vase
- _____ 12. **Smoke-Imp Smooth Panels 12" vase, 6" opening, gorgeous**
- _____ 13. M-Imp Smooth Panels 11 ½" vase
- _____ 14. **M-Imp Smooth Panels 7 ½" vase, Iron Cross mark**
- _____ 15. M-Imp Smooth Panels 4" vase, 4" opening
- _____ 16. **M-Imp Octagon 8" vase, old and super nice**
- _____ 17. Amber-Imp Ripple 9 ½" vase, lovely
- _____ 18. **M-Imp Flute 10 ¾" vase, dark and nice**
- _____ 19. M-Imp Morning Glory 11" funeral vase, 8" opening, showy!
- _____ 20. **M-Imp Morning Glory 8 ½" bud vase**
- _____ 21. M-Imp Morning Glory 8" bud vase
- _____ 22. **M-Imp Morning Glory 7" bud vase**
- _____ 23. M-Imp mini Morning Glory 5 ¼" vase
- _____ 24. **Electric P-Imp Freefold 12" vase**
- _____ 25. B-Fenton Stag and Holly 11" ICS bowl, a dandy
- _____ 26. **Light M-Fenton Stag and Holly 12" chop plate**
- _____ 27. G-Fenton Stag and Holly 7 ¾" spat ftd bowl
- _____ 28. **Scarce B-Fenton Mikado 9 ½" round compote, very nice**
- _____ 29. B-Fenton Chrysanthemum/Windmill 10 ½", ICS, footed bowl
- _____ 30. **Rare Olive G-Fenton Panther 9" master berry bowl**
- _____ 31. Electric P-Dugan Petal and Fan 10 ¾" bowl, Tiffany like iridescence
- _____ 32. **PO-Dugan Petal and Fan 10 ¾" bowl**
- _____ 33. P-Dugan Cherries 10", 8 ruffle bowl, Jeweled Heart reverse, delightful
- _____ 34. **PO-Dugan Cherries 9 ¼", 8 ruffle bowl**
- _____ 35. PO-Dugan Ski Star 7", 10 ruffle bowl, very unusual treatment
- _____ 36. **PO-Dugan Flowers and Frames 8", 10 ruffle bowl**
- _____ 37. M-Persian Medallion 6 ¼" plate
- _____ 38. **B-Persian Medallion 6 ¼" plate**
- _____ 39. PO-Four Flowers 6 ¾" plate, smooth reverse
- _____ 40. **PO-Four Flowers 6 ¾" plate, Big Basketweave reverse**
- _____ 41. P-Wishbone and Spades 6 ¼" plate
- _____ 42. **BA-Wishbone and Spades 6" bowl**
- _____ 43. PO-Garden Path 6" bowl, Soda Gold exterior
- _____ 44. **M-Kittens cereal bowl, extra nice**
- _____ 45. M-Kittens 4 ½" two-sides up dish
- _____ 46. **B-Pine Cone 6", 12-sided plate**
- _____ 47. B-Pine Cone 6" saucer
- _____ 48. **M-Horse Medallion 7 ¾" plate, nice example**
- _____ 49. M-Lustre Rose 11" fruit bowl
- _____ 50. **Smoke-Lustre Rose 11 ¼" fruit bowl, outstanding color**
- _____ 51. B-Butterfly and Berry 9 ½" master berry bowl, super
- _____ 52. **M-Stag and Holly large rose bowl, scarce and pretty**
- _____ 53. Pastel M-N Strawberry 9" bowl
- _____ 54. **Pastel M-N Peacocks bowl, excellent color**
- _____ 55. G-N Fruits and Flowers 7 ½" plate, another good'urn
- _____ 56. **Killer Amber-Open Rose 9" plate**
- _____ 57. PO-Leaf Rays 7 ruffle nappy
- _____ 58. **W-Fenton Peacock at Urn 8 ¾" bowl, fine pastels**
- _____ 59. M-Two Flowers 7 ¾", spat ftd bowl
- _____ 60. **Superb M-Fenton Peacock at Urn 9" bowl**
- _____ 61. P-N Grape and Cable 7 pc water set, pretty and well matched
- _____ 62. **B-Ground Cherries 7 pc water set, Drapery interior on pitcher**
- _____ 63. M-N Grape and Cable tumbler
- _____ 64. **Lav-N Grape and Cable tumbler**
- _____ 65. P-N Dandelion tumbler, nice
- _____ 66. **Ice G Vas-Crocus with Prism Band tumbler, scarce**
- _____ 67. A-Inverted Strawberry tumbler, tough one
- _____ 68. **B-Tiger Lily 4" tumbler**
- _____ 69. B-Enameled Ground Cherries tumbler
- _____ 70. **B-Enameled Forget-Me-Not tumbler**
- _____ 71. Nice G-N Raspberry tumbler
- _____ 72. **Rich M-Milady tumbler**
- _____ 73. Scarce A-Cambridge Double Star tumbler
- _____ 74. **B-Blackberry Block tumbler, lots of green iridescence**
- _____ 75. B-Enameled Daisy and Little Flowers tumblers, 6 times \$
- _____ 76. **M-Enameled Iris Prism Band tumblers, 4 times \$**
- _____ 77. M-Enameled Magnolia and Rib tumblers, 3 times \$
- _____ 78. **M-Crabclaw tumblers, 3 times \$**
- _____ 79. M-Ten Mums tumblers, 4 times \$
- _____ 80. **M-Water Lily and Cattails tumblers, 3 times \$**
- _____ 81. B-Rambler Rose tumbler
- _____ 82. **M-Rambler Rose tumbler**
- _____ 83. P-Rambler Rose tumbler
- _____ 84. **M-Buzz Saw and File juice glass**
- _____ 85. P-N Oriental Poppy 7 pc tankard water set, outstanding
- _____ 86. **Electric P-Diamond Lace 7 pc water set, awesome**
- _____ 87. Butler Brothers catalog, reprint
- _____ 88. **M-Sowerby Hen on Nest covered dish, original paper label inside**
- _____ 89. M-Hen on Nest covered dish
- _____ 90. **M-Pine Cone saucer w/ Wreath of Roses (Persian Medallion interior) cup**
- _____ 91. Lav-N Star of David and Bows 8" dome base bowl
- _____ 92. **M Flash-Cruet with stopper, 6 ¼" tall**
- _____ 93. M-Imp Little Barrel, above average
- _____ 94. **M-Dugan Constellation compote, usually seen in white**
- _____ 95. M-Imp Flute toothpick
- _____ 96. **P-Imp Flute toothpick**
- _____ 97. P-N Three Fruits Medallion 8 ¾" dome base bowl, top notch
- _____ 98. **Stunning P-N Grape and Cable 8 ¾" bowl**
- _____ 99. P-N Peacocks bowl, Rib exterior, loaded with color
- _____ 100. **Nice Pastel PO-N Peacocks bowl, Rib exterior**
- _____ 101. B-N Peacocks bowl, Rib exterior, purples and blues
- _____ 102. **P-N Peacocks 9" plate, Rib exterior**
- _____ 103. Incredible G-N Peacocks bowl, Rib exterior, show stopper
- _____ 104. **Pastel M-N Peacocks PCE bowl, Rib exterior, outstanding**
- _____ 105. P-N Peacocks PCE bowl, Rib exterior, multi electric
- _____ 106. **Electric P-N Good Luck PCE bowl, exquisite blues**
- _____ 107. B-Butterfly and Berry round sauce bowls, 6 times \$
- _____ 108. **M-Panther berry bowl, 6 times \$**
- _____ 109. G-Imp Cobblestone 9" bowl, seldom seen color
- _____ 110. **Superb W-N Thin Rib 12" mid-size vase, great pastels**
- _____ 111. PO-Dugan Wide Rib 10" vase
- _____ 112. **P-Rustic Vt. 14 ¼" mid-size vase, tulip top**
- _____ 113. P-Mlbg Blackberry Wreath 7 ¼", 3 in 1 bowl
- _____ 114. **Scarce Horehound-N Three Fruits Medallion 8 ¾" dome base bowl, rainbow iridescence**
- _____ 115. Electric B-N Beaded Cable rosebowl
- _____ 116. **Pumpkin M-N stippled Three Fruits 9" bowl**
- _____ 117. B-Persian Medallion large compote, crimped edge
- _____ 118. **Impressive M-Fenton Concord 8 ¾" bowl, find one better!**
- _____ 119. G-N Wishbone 8" footed bowl, great iridescence
- _____ 120. **P-N stippled Strawberry 8 ¾" bowl, great eye appeal AND rare rib back (few known w/ Rib back)**
- _____ 121. M-Rib and Panel 8 ½" pinched vase, round scalloped top
- _____ 122. **M-Rib and Panel 8 ½" pinched vase, ruffled scalloped top**
- _____ 123. M-Rib and Panel 8 ½" vase, wide base
- _____ 124. **M-Rib and Panel 7 ¾" vase, wider base**
- _____ 125. M-Rib and Panel 8 ½" vase, different configuration still, see photo
- _____ 126. **M-Rib and Panel 8" vase, 5 ½" tight crimp top**
- _____ 127. M-Vase, 8" tall, bulbous base, loaded with pinks, probably European
- _____ 128. **PO-Wide Rib 4 ¾" jardinière shape vase, most unusual**
- _____ 129. PO-Wide Rib 4 ¾" jardinière shape vase, as above
- _____ 130. **M-Boggy Bayou 5 ½" squatty vase**
- _____ 131. G-Imp Poppy Show vase, ruffled top, marked IG
- _____ 132. **Milk Glass-Imp Poppy Show vase, ruffled top, IG label, not iridized**
- _____ 133. Forest G-Singleton Bailey Poppy Show vase, ruffled top
- _____ 134. **Celeste B-Singleton Bailey Poppy Show vase, ruffled top**

135. Aqua-Singleton Bailey Poppy Show vase, ruffled top
136. **Honey Amber-Singleton Bailey Poppy Show vase, ruffled top**
137. White Opaline-Singleton Bailey Poppy Show vase, ruffled top
138. **Blue Opaline-Singleton Bailey Poppy Show vase, ruffled top**
139. Green/White cased-Singleton Bailey Poppy Show vase, ruffled top
140. **Pink-Singleton Bailey Poppy Show vase, ruffled top**
141. BA-Dugan Many Fruits punch bowl top only, round, scalloped
142. **M-Dugan Many Fruits punch bowl and base, ruffled top**
143. M- Many Fruits round base only
144. **Super M-N Peacock at Fountain punch bowl and base, repaired flute on top**
145. M-N Peacock at Fountain punch cups, 3 times \$
146. **Pumpkin M-N Memphis 11" round master berry bowl, beautiful**
147. M-N Memphis punch or fruit bowl base only, hot, hot pinks
148. **M-Orange Tree punch bowl only, ruffled top**
149. W-Enameled Crocus water pitcher
150. **W-Enameled Crocus tumbler**
151. Crystal-Enameled Magnolia and Drape 7 pc water set, not iridized
152. **Sapphire-N Enameled Floral decorated 7 pc tankard water set**
153. G-N Enameled Floral decorated 11 1/2" water pitcher, CRE top, not iridized
154. **G-N Enameled Floral decorated tankard water pitcher, not iridized**
155. M-Enameled Magnolia tumblers, 2 times \$
156. **Scarce Ice G-Enameled Crocus Vt. tumbler**
157. M-N Good Luck bowl, BW exterior
158. **P-N Good Luck bowl, scarce plain exterior**
159. Electric P-N Good Luck bowl, vivid colors
160. **P-N Good Luck ruffled bowl, BW exterior**
161. Super Electric B-N Good Luck bowl
162. **Fabulous P-N Good Luck PCE bowl**
163. P-N Strawberry PCE bowl
164. **Outstanding BA-N Poinsettia and Lattice 8 3/4" bowl, yowsah!**
165. Horehound-N Poinsettia and Lattice 8 3/4" bowl, extremely difficult to find
166. **Radium M-Brooklyn Bridge 10 ruffle bowl**
167. Superb B-N Grape and Cable 11" bowl, a lot of bowl for the money!
168. **B-Orange Tree 9 1/2" bowl, well above average**
169. G-N Strawberry 8 3/4" ruffled bowl
170. **G-N Three Fruits PCE bowl, very pretty with lots of blues**
171. P-N Grape and Cable pin tray, collector favorite
172. **P-N Three Fruits 9 1/4" plate, plain exterior, just super**
173. P-N Three Fruits Medallion spat ftd bowl, very colorful
174. **P-N Rose Show 9" bowl, lots of blues and purples**
175. B-N Embroidered Mums 8 3/4" bowl, highly desirable
176. **M-N Embroidered Mums 8 3/4" bowl, pastel iridescence**
177. P-N Wishbone 8 1/4" footed bowl, multi electric
178. **G-N Wishbone 8 1/4" footed bowl**
179. M-N Wide Panel epergne, always in demand
180. **AO-N round Bushel basket, got some color!**
181. Ice G-N round Bushel basket, nice pastel interior
182. **Lime G-N round Bushel basket, scarce and nice**
183. Pumpkin M-N 8-sided Bushel basket
184. **M-N 8-sided Bushel basket, pastel interior**
185. G-N 8-sided Bushel basket, gorgeous fuchsia interior
186. **Ice B-N Fine Cut and Roses rosebowl, Fancy interior, attractive pastels**
187. P-N Wild Strawberry 10" bowl
188. **M-Imp Frosted Block 9" plate, wall to wall electric face**
189. Colorful M-Imp Acanthus 10 1/4" chop plate
190. **M-Fenton Peacock and Grape 9" spat ftd plate**
191. Teal G-Imp Scroll Embossed 9 1/2" plate, base glows
192. **M-Imp Scroll Embossed 9 1/2" plate, good iridescence for a marigold example**
193. W-Leaf Rays spade shape nappy, pulsating pastels
194. **W-Question Marks 7 1/4" plate, yellows, blues and pinks**
195. W-N Fine Cut and Roses 7" bowl
196. **W-Fenton Pond Lily 4 sides up bonbon**
197. W-Dugan Grapevine Lattice 7" bowl, very nice
198. **W-Lattice and Points 8" vase, Daisy in bottom**
199. W-Dugan Lined Lattice 10" vase
200. **W-N Tree Trunk 10" vase**
201. W-Dugan Target 11 1/4" vase, incredible example
202. **W-Imp Ripple 9" vase**
203. W-N Drapery 7" tri-corner bowl, fabulous pastels
204. **W-N Daisy and Drape vase, better than they usually come**
205. W-Dugan Fanciful 9" low ruffled bowl/plate, superb pastels
206. **W-Dugan Persian Garden 11 1/2" master ICS bowl**
207. W-Fenton Peacock at Urn 9 1/4" plate, breath taking
208. **M-Fenton Peacock at Urn 9 1/2" plate**
209. A-Fenton Peacock at Urn 9" bowl
210. **G-Fenton Peacock at Urn 9" bowl, wonderful iridescence**
211. Pumpkin M-Fenton Peacock at Urn 8 1/4" ICS bowl, as good as they get
212. **Powder B-Fenton Lions 7" bowl**
213. Great M-Fenton Lions 7" ICS bowl, very detailed
214. **Electric P-Imp Star of David 8 5/8" bowl**
215. M-Imp Grape 6 3/4" plate
216. **Light P-Imp Cobblestone 9" bowl, electric I guess**
217. M-Octagon decanter, no stopper
218. **Electric P-Imp Star of David 8 1/2" bowl**
219. Super P-Imp Acanthus 8" round, deep bowl
220. **P-Dugan Four Flowers 8 3/4" bowl, very nice**
221. P-N Nippon 8 3/4" bowl
222. **SCARCE Sapphire-Dugan Double Stem Rose 8" bowl**
223. B-N Peacocks bowl
224. **Exquisite AO-N Peacocks bowl, full color birds**
225. P-N Peacocks bowl, electric highlights
226. **B-N Peacocks PCE bowl, lots of blues and purples**
227. Pumpkin M-N Peacocks PCE bowl
228. **P-N Peacocks 9 1/4" plate, very attractive**
229. BA-Star center hatpin
230. **BA-Six Plums hatpin**
231. G-Scarab Shell w/ brass mounting hatpin, very scarce
232. **BA-Six Plums hatpin, electric**
233. BA-Tufted Throw Pillow hatpin
234. **BA-Triad hatpin, electric**
235. BA-Top O' The Morning hatpin
236. **BA-Big Butterfly hatpin**
237. BA-Dragonflies hatpin
238. **Carnival Glass Jewelry Lot-Earrings and beaded necklace, see photo**
239. Pumpkin M-N Grape and Cable hatpin holder
240. **G-N Grape and Cable hatpin holder**
241. P-N Grape and Cable hatpin holder
242. **M-Zipper Loop large oil lamp, 6" base**
243. M-Lotus and Grape 6 1/2" round bowl
244. **G-N Grape and Cable PCE bowl**
245. P-N Three Fruits 9" plate, good color
246. **Aqua-Fenton Peacock and Grape 7 1/4" bowl, very scarce and super nice**
247. AO-N Dandelion mug, old favorite
248. **Electric G-N Wild Rose 7" flared bowl**
249. P-Wishbone and Spades 6 1/2" plate, awesome
250. **B-Persian Medallion 6 1/2" plate, great example**
251. B-Fenton Blackberry Open Edge 7" square basket, vibrant blue base color
252. **W-Fenton Blackberry Open Edge 7 1/4" square basket**
253. BA-Australian Swan 9 1/2", 16 ruffle bowl
254. **M-Australian Emu 10", 8 ruffle bowl, exceptional color**
255. BA-Australian Magpie 10", 8 ruffle bowl, super pretty
256. **BA-Australian Shrike (Thunderbird) 9 3/4", 12 ruffle bowl, also has great color**
257. BA-Australian Kangaroo (doe) 9 3/4", 16 ruffle bowl
258. **BA-Australian Kangaroo (buck) 9 1/2", 16 ruffle bowl, striking color**
259. BA-Australian Kangaroo (doe) 9 3/4", 8 ruffle bowl

- _____ 260. Pumpkin M-N Good Luck PCE bowl
- _____ 261. Electric B-N Good Luck PCE bowl
- _____ 262. G-N Good Luck bowl, many would call this emerald green
- _____ 263. G-N Good Luck PCE bowl, BW exterior
- _____ 264. Rare Green-Imp Poppy Show vase, this one is old and NOT marked IG
- _____ 265. M-Imp Poppy Show vase, outstanding color on this OLD vase
- _____ 266. no item
- _____ 267. Red-Singleton Bailey Poppy Show vase, ruffled top
- _____ 268. Lav-Singleton Bailey Poppy Show vase, ruffled top
- _____ 269. Celeste B-Singleton Bailey Poppy Show vase, ruffled top
- _____ 270. Forest G-Singleton Bailey Poppy Show vase, ruffled top
- _____ 271. Vas Opal-Singleton Bailey Poppy Show vase, ruffled top
- _____ 272. Electric P-Imp Morning Glory 18" funeral vase
- _____ 273. Gorgeous B-Rustic 23 1/2" funeral vase, plunger base-a prize!
- _____ 274. M-Rustic 23 5/8" funeral vase, very nice
- _____ 275. B-Rustic 19 3/4" vase
- _____ 276. Killer M-Rustic 19 3/8" funeral vase
- _____ 277. P-Rustic 19 3/4" funeral vase
- _____ 278. M-Vintage Grape fernery
- _____ 279. M-Columbia 5 1/2" vase, super pretty

- _____ 280. A-Fenton Concord 9 1/4" plate, outstanding, scarce piece
- _____ 281. Lav-Imp Pansy 9 1/4" low ruffled bowl
- _____ 282. Sparkling M-Fenton Leaf Chain 9 1/4" plate, top notch
- _____ 283. Cherry Red-Fenton Dragon and Lotus 9" bowl, color all day long
- _____ 284. Cherry Red-Fenton Dragon and Lotus 8 1/2" ICS bowl
- _____ 285. Red-Fenton Dragon and Lotus 9" bowl
- _____ 286. Red Swirl-Fenton Dragon and Lotus 9" bowl, most unusual
- _____ 287. Scarce Red-Fenton Plaid 8 3/4" ICS bowl
- _____ 288. Red-LeVay Good Luck 9" round bowl, marked 1 of 100, 1982
- _____ 289. Red-Fenton 2 row O.E. 5 1/2" basket
- _____ 290. Red-Fenton Blackberry Open Edge 7", 2 sides up basket, red on red
- _____ 291. Red Amberina-Fenton Holly compote
- _____ 292. Red-Fenton Holly 9" bowl
- _____ 293. Red-Fenton Fine Rib 10 1/4" vase
- _____ 294. Red Slag w/ Gold Flake-Fenton Orange Tree shaving mug
- _____ 295. Cherry Red-Fenton Orange Tree shaving mug
- _____ 296. Red-Fenton Orange Tree standard mug
- _____ 297. Red-LeVay Butterfly and Tulip 11 1/4", 9 ruffle bowl, dated 2006
- _____ 298. Bright M-N Poppy Show 9 3/8" plate

SPECIAL NOTE:

NO SUNDAY CALLS, PLEASE!

Winning Absentee Bidders will be contacted Monday through Wednesday of the week following the Auction!

Thank You!

SEND ALL MAIL TO:

**18350 Hunters Ridge Ct.
Boonville, MO 65233**

WATCH:  Web Site: www.AWK-SHN.com

299. Teal G-Imp Lotus and Grape 7 3/4" plate, good, good color
300. B-Fenton Lotus and Grape 9" plate, a prize piece
 301. G-Mlbg Whirling Leaves 9" tri-corner bowl, scarce shape
302. M-Mlbg Many Stars 9 3/4", 3 in 1 bowl, loads of color
 303. Radium A-Mlbg Many Stars 10" bowl, equally pretty
304. Excellent G-Mlbg Peacock at Urn 10" bowl
 305. A-Mlbg Peacock at Urn 10 1/2" bowl
306. Radium A-Mlbg Peacock 10", ICS bowl, no beads
 307. A-Mlbg Peacock at Urn 8 3/4" Mystery bowl, scarce variety
308. G-Mlbg Hanging Cherries 10 1/2" bowl, lovely satin
 309. Striking A-Mlbg Trout and Fly 8 3/4", 3 in 1 bowl, superb
310. Radium G-Mlbg Trout and Fly 8 3/4", 3 in 1 bowl, another knockout
 311. G-Mlbg Trout and Fly 8 3/4" bowl, what a catch!
312. Colorful M-Mlbg Trout and Fly 8 3/4" bowl
 313. Superb A-Mlbg Trout and Fly 8 3/8" ICS bowl, pretty as they come
314. Great M-Mlbg Big Fish 9", 3 in 1 bowl, always in demand
 315. G-Mlbg Big Fish 8 3/4", 3 in 1 bowl
316. A-Mlbg Big Fish 8 1/4" ICS bowl, add this one to your creel!
 317. Pumpkin M-N Peacock at Urn 10" ICS master bowl, beautiful
318. W-N Peacock at Urn 10 3/4" ICS master bowl, gold, pinks and blues
 319. P-N Peacock at Urn 10" master ICS bowl, lots of color
320. Staggering Electric B-N stippled Grape and Cable Vt. PCE bowl, what more could you ask for?
 321. Pastel AO-N Peacocks bowl, makes a statement
322. AO-N Three Fruits Medallion spat ftd bowl, luscious pastels
 323. W-N Poppy Show 8 3/4" bowl
324. Ice Blue Opal-N Rose Show 9" opal, a bouquet of colors
 325. M-N Rose Show 9" bowl
326. Pastel M-N Rose Show 9 1/4" plate, pleasing palette of pastels
 327. P-N Rose Show 8 3/4" bowl, multi color dandy
328. Yellow Amber-Fenton Dragon and Lotus 8 3/4" bowl
 329. Pumpkin M-Fenton Dragon and Lotus 8 1/2", 3 in 1 bowl, top shelf item
330. G-Fenton Dragon and Lotus 8 1/2", 3 in 1 bowl, green iridescence
 331. M-Fenton Dragon and Lotus 8 1/4" ICS bowl, leans toward pink or peach
332. A-Fenton Dragon and Lotus 9" bowl, purple iridescence
 333. Lovely G-Fenton Dragon and Lotus 8 3/4" bowl
334. B-Fenton Dragon and Lotus 9" bowl, super nice
 335. Lime Vas Opal-Fenton Dragon and Lotus 8" bowl
336. Vas Opal-Fenton Peacock and Grape 9" bowl
 337. M-Dragon and Strawberry 9 3/4" bowl, gorgeous and scarce
338. B-Fenton Plaid 8 7/8" low ICS bowl
 339. A-1910 Detroit Elks 6 1/2" bowl, great advertising item
340. Vas Opal-Fenton Atlantis (fish) vase
 341. Blue Burmese painted-Fenton Atlantis (fish) vase, not iridized, satin finish
342. Ice Green Opal-Fenton Atlantis (fish) vase
 343. Fantastic W-Fenton Atlantis (fish) vase
344. Pink Opal-Fenton Atlantis (fish) vase
 345. Blue Burmese-Fenton Atlantis (fish) vase, satin and not iridized
346. Green Slag-Fenton Atlantis (fish) vase, not iridized
 347. BA-Fenton Atlantis (fish) vase
348. Pink Slag-Fenton Atlantis (fish) vase, glossy, not iridized
 349. Red-Fenton Atlantis (fish) vase
350. Periwinkle Blue-Fenton Atlantis (fish) vase
 351. PO-Fenton Atlantis (fish) giant rosebowl
352. PO-Fenton Atlantis (fish) vase with cuspidor top
 353. PO-Fenton Atlantis (fish) fan shape vase
354. PO-Fenton Atlantis (fish) flared, ruffled vase
 355. Opaque Lime Green-Fenton Peacock Garden vase, not iridized
356. Custard-Fenton Peacock Garden vase, not iridized
 357. Jade Green-Fenton Peacock Garden vase, not iridized
358. Light Blue-Fenton Peacock Garden vase, not iridized

359. BA-Fenton Peacock Garden vase, awesome iridescence
360. Sapphire Blue-Fenton Peacock Garden fan vase
 361. Teal G-Fenton Grape and Cable humidor shape, covered
362. Blue Favrene Grape and Cable humidor shape, covered, fabulous
 363. Pink Opal-Fenton handpainted Butterfly 9" vase, not iridized
364. P-Fenton handpainted 5" tall Beaded Melon Rib vase, crimped 6 1/2" top
 365. White Opal-1991 ICGA handpainted Beaded Melon Rib pitcher
366. Sapphire-Fenton 7" handpainted pitcher, not iridized
 367. Blue Opal-Fenton handpainted guest set or tumble up, not iridized
368. Green Opal-Fenton handpainted 8 1/2" vase, not iridized
 369. Sapphire/White cased-Fenton Beaded Melon Rib 5" pitcher
370. Favrene-Fenton enameled Ginger Jar (large), with base
 371. Green/White cased-Fenton handpainted 6 3/4" pitcher, not iridized
372. Mulberry-Fenton 5 1/2" handpainted, ruffled top vase, not iridized
 373. Mulberry-Fenton 10 3/4" handpainted ruffled top vase, not iridized
374. Mulberry-Fenton 9 1/2" handpainted ruffled top vase, not iridized
 375. Royal Purple-Fenton 9 1/2" handpainted round top vase, not iridized
376. Mulberry-Fenton 9 1/2" handpainted round top vase, not iridized
 377. Red stretch-Fenton handpainted ruffled top vase w/ base
378. G-Gibson 6" town pump, super color, contemporary
 379. B-Gibson 6" Crackle pitcher
380. B-Enameled Cherry and Little Flowers tumbler
 381. M-Enameled Lotus and Rib tumblers, 2 times \$
382. Light B-Enameled Cherries tumbler
 383. M-Enameled Iris and Prism Band tumblers, 2 times \$
384. M-Enameled Magnolia and Drape tumbler
 385. B-Enameled Spring Festival tumbler, chip on base
386. M-Enameled Freesia tumbler
 387. G-N Enameled Chrysanthemum tumblers, not iridized, 5 times \$
388. Sapphire-Enameled Crocus tumbler, not iridized
 389. G-N Enameled Floral tumblers, not iridized, 4 times \$
390. Ice G-Enameled Crocus tumbler, not iridized
 391. M-Memphis punch cups, 3 times \$
392. M Flash- Star goblets, 6 times \$
 393. M-Diamond Point Columns 5 3/4" squatty vase
394. Scarce Red-Fashion toothpick holder, marked IG
 395. Cobalt B-S-Repeat toothpick holder, contemporary
396. W-S-Repeat toothpick holder, contemporary
 397. Cobalt B-Holly Band toothpick holder, contemporary
398. Cobalt B-Nautilus toothpick holder, contemporary
 399. B-Feathered Serpent footed toothpick holder, contemporary
400. B-St. Clair Bicentennial square toothpick holder

**1 Mile North of I-70
 on Hwy. 5, Exit 101**

**Please let us know
 if you wish to remain
 on mailing list.**

**Call, or email address
 plus zip code.**

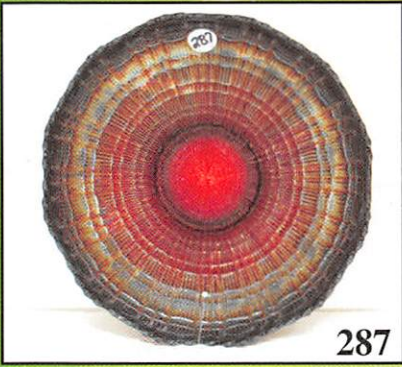
Call Today To Sell Your Fine Items
660-882-5292 Day
660-882-5283 Evening



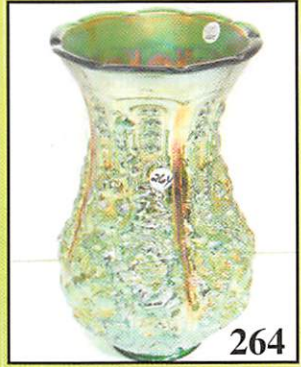
182



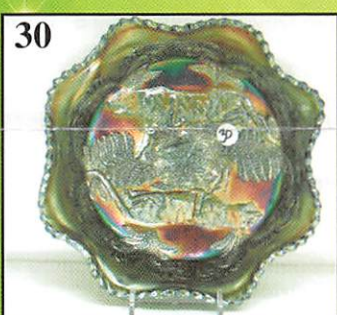
242



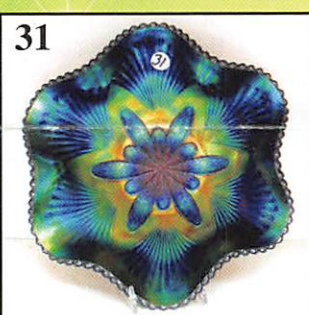
287



264



30



31



54



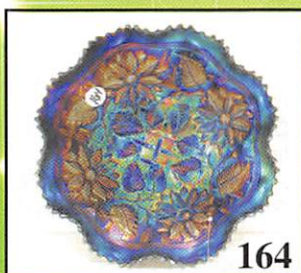
56



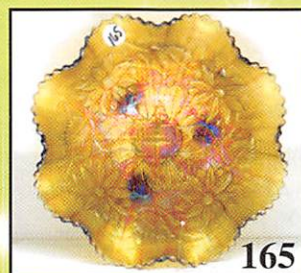
60



372



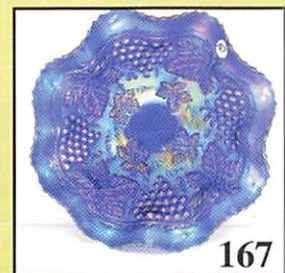
164



165



166



167



222



228



231



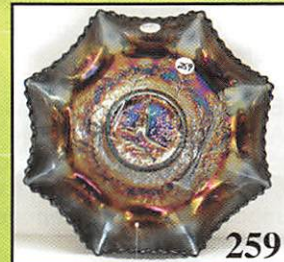
256



257



258



259



261

CARNIVAL GLASS

SATURDAY - MAY 17, 2014 at 9:00 am -pre
Doors Open 7:30 AM
in BOONVILLE, MO. @ The M

1440 Ashley Road, 1 mile

Better than January
Don Rohrer Collection
Absolute sale - No Buyers Pr
www.awk-shn.com

CLASS AUCTION

view Friday May 16 12:00 Noon -- 5:00 PM

M Auction Morning

Mickey Reichel Auction Gallery

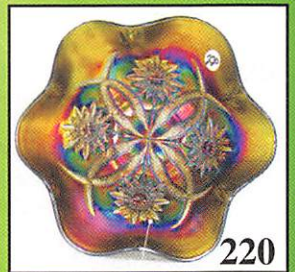
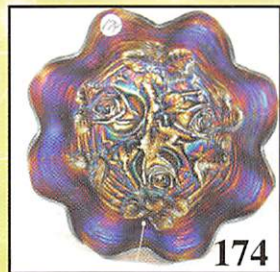
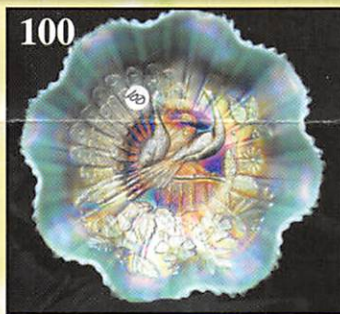
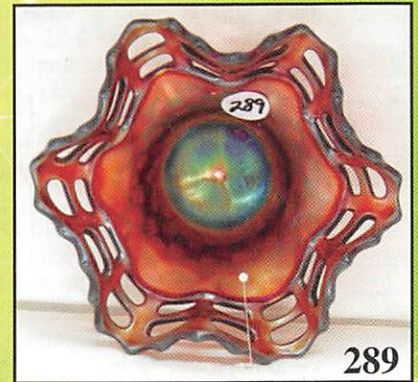
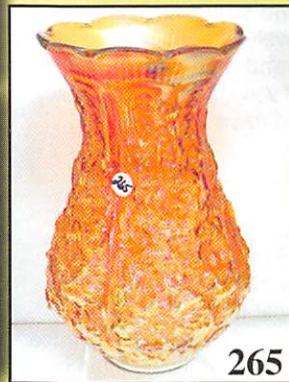
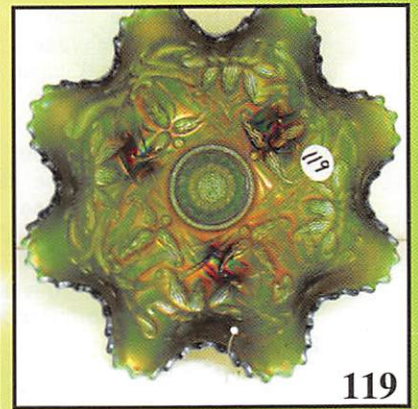
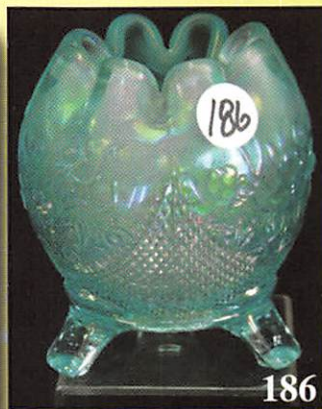
e N. I-70 Exit 101 Hwy 5

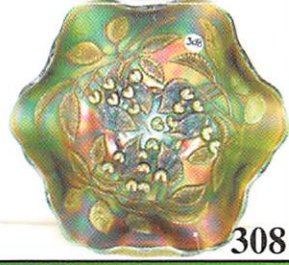
ary Extravaganza.

from Washington State

remium – Open to the Public

n Free photo tour





308



320



321



322



323



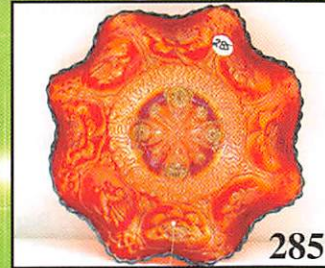
92-93-95-96



283



284



285



362



298



299



302



303



309



310



311



312



313



273



274



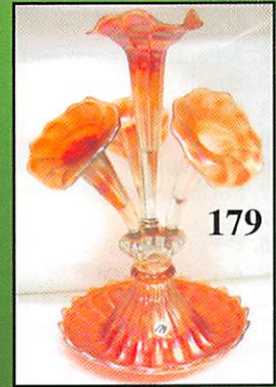
275



276



277



179



85

Make Reservations **EARLY** at one of these local motels:

- Days Inn: 660-882-8624
- Comfort Inn: 660-882-5317
- Super 8: 660-882-2900
- Holiday Inn: 660-882-6882

Mickey Reichel Auction Center

1 Mile North of I-70 on Hwy. 5, Exit 101, Boonville, Missouri, 20 Miles West of Columbia, MO on I-70

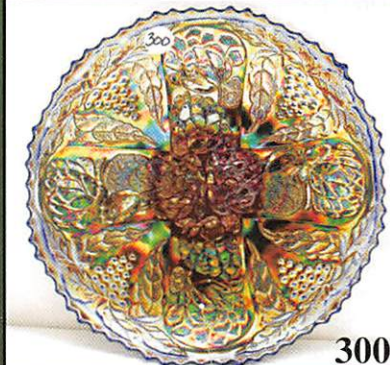


TERMS: Cash or Good Check, VISA and MasterCard accepted.



5% Clerking Fee on all purchases except for payment of cash or check.

Proper I.D. required.

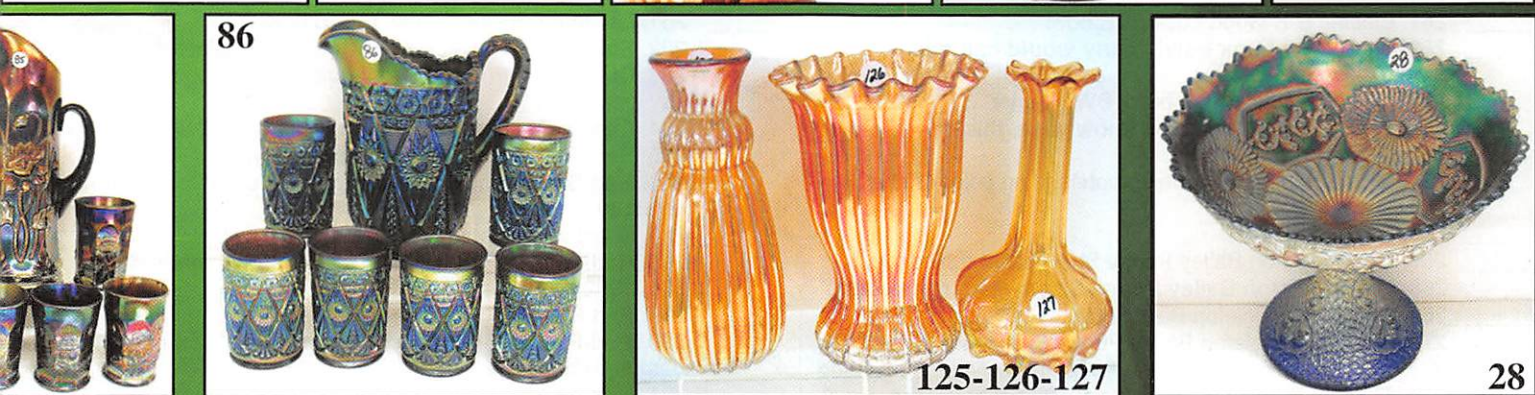
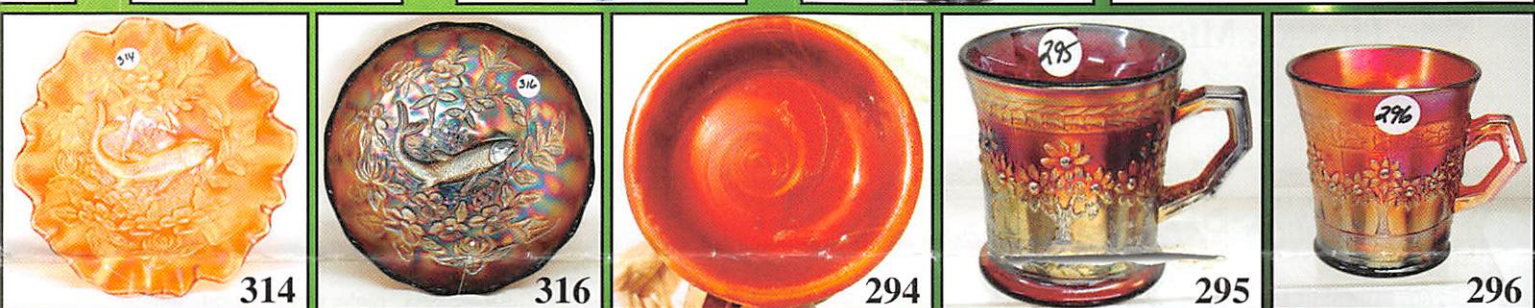
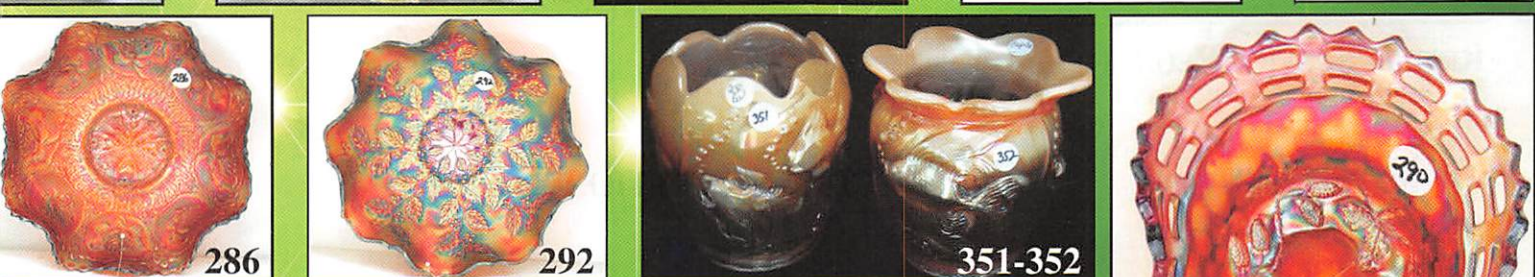
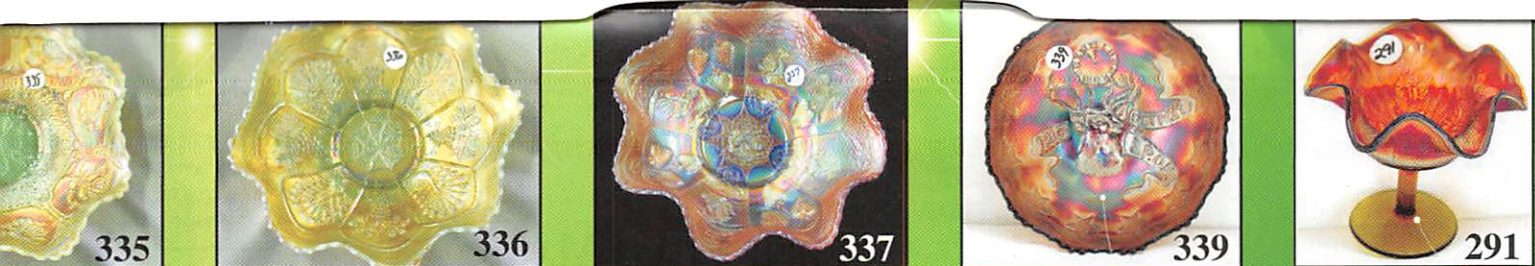


300



301

**** No return on any items once (No Exc*



★ ★ ★ NO BUYERS PREMIUM ★ ★ ★
ABSENTEE BID POLICY:
PLEASE NOTE: There is a \$6 handling charge for each successful bid which will be added to the selling price for all write-in bids. This is in addition to the cost of postage, insurance and packing. Your write-in bid will be entered just as if you are present and bidding. **Successful bidders will be notified in 1 to 3 days by the auctioneer (so be sure to include your phone number).** Direct mail bids to Auctioneer Mickey Reichel, 18350 Hunters Ridge Ct., Boonville, MO 65233-2971. Terms: Cash or Check accepted with proper I.D. and Social Security Number and References. Announcements made day of the auction supercede all printed material. Not Responsible for Accidents or Sold Items. **Call in Bids before Auction Welcome!**
 Call for additional information: 660-882-5292 days or 660-882-5283 evenings before 9:00 p.m.
 FAX: 660-882-5292
 (evening hours start FAX transmission after beep)
 E-mail: mreichel@AWK-SHN.com
 Web Site: www.awk-shn.com

they leave the Auction Center * * *
 (options)

SEE REVERSE FOR DETAILS