

- _____ 1. B-Fenton Dragon and Lotus 9" bowl, silver satin
- _____ 2. **Soft M-Fenton Holly 8 3/4" ICS bowl, pretty**
- _____ 3. G-Fenton Acorn 8 1/2" bowl, don't see many green ones
- _____ 4. **M-Fenton Peacock at Urn 9" bowl, extra nice example**
- _____ 5. A-Fenton Little Flowers 5" round sauce
- _____ 6. **B-Fenton Two Flowers 8" flared nut bowl**
- _____ 7. M-Dugan Apple Blossoms 5 3/4" round nut bowl
- _____ 8. **Pumpkin M-Fenton Cherry Chain 10" ruffled bowl**
- _____ 9. M-Imp Windmill milk pitcher
- _____ 10. **P-N Three Fruits 8 1/2" bowl, BW exterior**
- _____ 11. M-Fenton Acorn 6" nut bowl, nice color
- _____ 12. **Dark A-N Grape Leaves 9" bowl**
- _____ 13. M-Mlbg Blackberry Wreath 5 3/4" round, flared bowl
- _____ 14. **Stunning Radium M-Mlbg Rays and Ribbons 9 3/4" bowl**
- _____ 15. G-Mlbg Cosmos 6" ICS bowl, colorful
- _____ 16. **G-Mlbg Mayan 8" ICS bowl**
- _____ 17. Lav-Mlbg Hanging Cherries 7" ICS bowl
- _____ 18. **P-Mlbg Whirling Leaves 10" bowl**
- _____ 19. Yellow Custard -Blackberry Spray 6 1/2" ICS bowl, with silver and red devices, not iridized
- _____ 20. **Cobalt B w/ Gold trim-N Shasta Daisy (Verre D'or) 8 1/2" tri-corner bowl**
- _____ 21. Purple w/ Gold trim-N Ribbon and Overlapping Squares (Verre D'or) 6 1/2" cookie compote
- _____ 22. **M-Imp Fashion 5 piece water set**
- _____ 23. M-Imp Star and File pitcher and one tumbler
- _____ 24. **Dark M-Twins Fruit bowl, base and one berry dish**
- _____ 25. Radium M-Mlbg Grape Wreath Vt. 6 1/2", 3 in 1 crimped edge bowl
- _____ 26. **M-Wild Berry powder jar base**
- _____ 27. Dark Teal-Fenton Stippled Rays 6" bowl, rare color
- _____ 28. **M-Dugan Weeping Cherries 9", dome base, 3 in 1 high crimp bowl, radium gem**
- _____ 29. PO-Dugan Flowers and Beads 7 1/2" plate
- _____ 30. **Moonstone-Westmoreland Beaded Dots 4 3/4" miniature compote**
- _____ 31. G-Fenton Iris goblet shaped compote
- _____ 32. **MMG-Imp Smooth Panels 7" vase, scarce color**
- _____ 33. B-Dugan Pulled Loops 10 1/4" vase, fabulous finish and scarce color
- _____ 34. **Vas Ice G-N Thin Rib 12" vase, glows like crazy**
- _____ 35. Lime G Vas-N Thin Rib 11" vase, loaded with pastels
- _____ 36. **Dark M-Imp Smooth Panels 11 3/4" vase, color top to bottom**
- _____ 37. M-Fenton Persian Medallion 6" plate
- _____ 38. **Nice M-Fenton Horse Medallion 7 1/2" plate**
- _____ 39. B-Fenton Pine Cone 6" saucer, wear in center
- _____ 40. **B-Fenton Cherry Chain 6 1/4" plate, Orange Tree reverse**
- _____ 41. M-Fenton Stippled Rays/Scale Band 7" plate
- _____ 42. **G-Imp Grape 6 1/2" plate**
- _____ 43. G-Fenton Leaf Chain 9" plate, silver satin finish
- _____ 44. **P-Dugan Cherries 6" CRE plate**
- _____ 45. M-Fenton Leaf Chain 7 1/2" plate
- _____ 46. **B-Fenton Persian Medallion 6 1/2" plate**
- _____ 47. A-Fenton Peacock Tail 5 1/4" round, flared bowl
- _____ 48. **M-Fenton Peacock and Grape 9" spat ftd. plate, nice piece**
- _____ 49. G-Fenton Peacock Tail 5 1/4" round, flared bowl
- _____ 50. **Red-Fenton 2 row, O.E. 5 1/2" JIP hat**
- _____ 51. Red Amberina-Fenton 2 row, O.E. 5 1/2" hat
- _____ 52. **Red-Fenton Holly 5 3/4" JIP hat with CRE**
- _____ 53. Brick Red-Fenton Holly 9" bowl, damage on rim
- _____ 54. **Red-Fenton Acorn 7 1/2" bowl**
- _____ 55. Red-Fenton Fine Rib 9 1/2" vase, base chipped
- _____ 56. **PO-Dugan Leaf Rays 7-ruffle nappy**
- _____ 57. Green Vas-Fenton Holly 6" ruffled hat, not iridized
- _____ 58. **Vas stretch with gilt rim-7 1/2" rolled rim bowl, different finish**
- _____ 59. W-Dugan Persian Garden 6" ICS bowl, Basketweave back, yellows, purple and golds
- _____ 60. **Stunning W-Fenton Persian Medallion rosebowl, lavender iridescence**
- _____ 61. W-Dugan Lattice and Points 6 3/4" very low ruffled hat, great pastels
- _____ 62. **W-N Fruits and Flowers stemmed bonbon, scarce and nice**
- _____ 63. P-N Grape and Cable hat whimsy from tumbler, 5 1/2" ruffled top
- _____ 64. **P-Imp 474 tumbler, nice find**
- _____ 65. M-Imp Tiger Lily tumbler
- _____ 66. **B-Stork in Rushes beaded tumblers, 2 x \$**
- _____ 67. A-N Grape and Cable tumbler, radium finish
- _____ 68. **P-N Raspberry tumblers, nicely matched, 6 x \$**
- _____ 69. Imp Smooth Rays 9 3/4" plate with electric iridescence, basically on crystal
- _____ 70. **M-Fenton Holly 9 1/2" plate, stretchy finish**
- _____ 71. G-Fenton Leaf Chain 9 1/4" plate, silver satin finish
- _____ 72. **Champagne-Fenton Holly 9 3/4" plate, quite attractive**
- _____ 73. B-Fenton Holly 9 1/2" plate
- _____ 74. **Near Olive G-Imp Open Rose 9" plate, different color for this pattern**
- _____ 75. Radium M-Pony 9 1/2" plate, age questionable????
- _____ 76. **B-Fenton Captive Rose 9" plate, delicious green iridescence**
- _____ 77. Cobalt B-Fenton Acorn 8" bowl, lots of color
- _____ 78. **P-Dugan Pony 8 1/2" bowl, nice one**
- _____ 79. Royal Blue Opal-Westmoreland Pearly Dots 6" compote, great find!
- _____ 80. **B-N Beaded Cable rosebowl, electric highlights**
- _____ 81. Deep A-N Leaf and Beads rosebowl w/ Sunflower interior, multi-electric
- _____ 82. **Helios G-Imp Grape 9 1/4" plate**
- _____ 83. M-Imp Scroll Embossed 9 1/2" plate, above average color for these
- _____ 84. **Lav-Imp Pansy 9 1/4" low ruffled bowl/plate, excellent color**
- _____ 85. M-Lattice and Grape tumbler
- _____ 86. **M-Dugan Stork in Rushes w/ Lattice Band tumbler, radium**
- _____ 87. M-Dugan Lattice and Daisy tumbler, radium
- _____ 88. **Olive G-N Singing Birds tumbler, different and delightful**
- _____ 89. M-Fenton Water Lily and Cattails tumbler, dark
- _____ 90. **P-N Acorn Burrs tumbler, extremely nice**
- _____ 91. B-N Peacock at Fountain tumbler
- _____ 92. **A-Dugan Rambler Rose tumbler**
- _____ 93. P-N Singing Birds mug
- _____ 94. **Super Dark A-N Singing Birds mug, gorgeous**
- _____ 95. P-Dugan Fishermans mug
- _____ 96. **M-Fenton Dragon and Strawberry 9" ICS bowl, hot pattern**
- _____ 97. Rich A-N Stippled Rays 9 1/4" bowl
- _____ 98. **Killer M-Imp corn bottle, super nice**
- _____ 99. B-N round Bushel basket
- _____ 100. **Remarkable Electric B-N stippled Peacocks 9" plate. Birds loaded with color, just as nice as they come!**
- _____ 101. Superb M-N stippled Peacocks 9" plate. Again, great birds and great all over iridescence!
- _____ 102. **B-N Peacocks 9" plate. Great electric example.**
- _____ 103. M to clear-N Sunflower spat ftd. bowl
- _____ 104. **M-Fenton Plaid 9" bowl, above average example**
- _____ 105. M-Dugan Vintage (Grape) powder jar w/ lid
- _____ 106. **M-European (?) 9" pitcher, w/ eight sided base, daisy and beaded pattern, you name it, you claim it! Most unusual**
- _____ 107. M-Imp Acanthus 10" plate, beguiling color
- _____ 108. **Champagne-Fenton Orange Tree 9 1/4" plate, trunk center, sweet**
- _____ 109. M-Fenton Pine Cone 6 1/4", 12 scallop plate
- _____ 110. **Super M-Fishscale and Beads 7 1/4" low ruffled plate/bowl**
- _____ 111. P-Imp Heavy Grape 8" plate, vibrant colors
- _____ 112. **Electric P-Imp Pansy nappy, color inside and out**
- _____ 113. M-Dugan Leaf Rays spade shape nappy
- _____ 114. **W-Dugan Leaf Rays spade shape nappy, awash in pastels**
- _____ 115. B-Fenton Plaid 9" bowl
- _____ 116. **A-Fenton Wild Blackberry 8 1/2", 3 in 1 bowl. Scarce pattern.**
- _____ 117. Sapphire-Fenton Blackberry Spray 6 1/2" square hat, only 2 sets of berries
- _____ 118. **G-Fenton Thistle 8 3/4" bowl**
- _____ 119. Nice G-Fenton Holly 9", 3 in 1 bowl
- _____ 120. **Smoke-Imp corn bottle, loaded with blues and purples**
- _____ 121. P-N Grape and Cable 9 1/4" plate, electric blue and green
- _____ 122. **Stunning G-N Nippon 8 3/4" bowl, BW exterior**
- _____ 123. Awesome Pastel M-N Grape and Cable Vt. 8 3/4" bowl, plain back
- _____ 124. **Pastel AO-N Hearts and Flowers compote, loaded with color**
- _____ 125. Scarce and Beautiful Amber-Imp Open Rose 9 1/4" plate, just as nice as they come
- _____ 126. **Fantastic Electric Amber-Imp Scroll Embossed 5 1/4" bowl, File exterior, covered in electric blues, hard to imagine a better one**
- _____ 127. Wonderful Red-Fenton Blackberry Spray 6 1/4" hat, red the way it is supposed to look

128. Smoky Blue-Fenton Ribbon Tie 9", 3 in 1 bowl, blessed with fuschia and blue pastels, a real looker
129. Scarce A-Mlbg Peacock at Urn Variant, 6" round sauce, three rows of beads and four rows of tail feathers, extremely nice and very scarce
130. Radium P-Mlbg Leaf and Little Flowers 4 1/4" small compote with six ruffles, a little gem!
131. AO-N Beaded Cable rosebowl, super nice pastels
132. Scarce Ice G-N Peacock at Fountain compote
133. A-N Sunflower 9" spat ftd bowl
134. Pastel M-N Sunflower 9" spat ftd bowl, very attractive
135. P-N Poppy Variant/Stippled Daisy interior 7 1/2" bowl, rainbow colors, not often seen
136. AO-N Drapery rosebowl, check out the squared ruffles!
137. P-N stippled Three Fruits plate, electric border
138. Great M-N Three Fruits 9" plate, smooth back
139. Awesome G-N Good Luck PCE bowl, BW back, emerald highlights
140. Super M-N Hearts and Flowers 8 3/4" bowl, way above average
141. Pastel M-N Rose Show 9 1/2" plate
142. Dark M-European 11 3/4" chop plate, don't know the name--see photo
143. Superb Amber-Imp Homestead 10 1/4" chop plate, great pinks, fuschias, greens
144. M-Imp Heavy Grape 11 1/4" chop plate
145. PO-Dugan Wishbone and Spades 9 1/4" deep, round bowl, unusual shape
146. M-7 3/4", eight ruffle, bowl with ringed design on outside--see photo
147. M-Dugan Weeping Cherries 9", ten ruffle, dome base bowl
148. Pretty M-Fenton Feather Stitch 9 1/4" bowl
149. P-Imp Pansy nappy, odd "ringed" iridescence
150. Purple-Eda Sunk Daisy 7" rosebowl, rare and wonderful, factory polished feet
151. Electric P-Imp Scroll Embossed 7 3/4" round, flared bowl
152. B-Fenton Two Flowers 9 3/4" ball ftd bowl
153. P-Imp Heavy Grape 7 3/4" plate, electric
154. G-Imp 474 milk pitcher
155. M-Imp 474 water pitcher, crack through base
156. P-N Grape and Cable small size punch bowl base, loaded with color
157. W-N Peacocks 9" plate, purples, yellows and blue
158. Scarce W-Fenton April Showers 11 1/2" vase, lots of pastels
159. Frosty W-N stippled Three Fruits 9" collar base bowl, tough color
160. RARE Yellow Custard stretch Northwood #647 10" bowl, with flared rim, 3 3/8" base, beautiful pastel hues, only one I've ever seen or heard of. Has Black Amethyst stand.
161. Spectacular Electric B-N round Bushel basket, as good as they get
162. AO-N round Bushel basket, with the darkest pumpkin marigold interior imaginable
163. Scarce G-N eight sided Bushel basket, seldom seen and gorgeous
164. Ice G-N eight sided Bushel basket, beautiful pastel interior
165. Stunning Electric B-N Drapery tri-corner candy dish, nearly perfect feet
166. Lime G-N Drapery tri-corner candy dish, impressive pastels and GOOD feet
167. Electric P-N Drapery tri-corner candy dish, vivid colors and good feet
168. Very Scarce Elec G-N Drapery tri-corner candy dish, typical flaws on feet, but so what? Find one prettier in green!
169. Shimmering White-Dugan Fanciful 8 3/4" plate, great pastels
170. W-Fenton Peacock at Urn 9 1/4" plate, covered in purples and blues
171. G-N Poppy pickle dish, lovely fuschia hues
172. M-Australian Shrike (or Thunderbird, if you prefer) 9 3/4", 12 ruffle bowl, radium, nice!
173. Vibrant P-Four Flowers Vt. 9 1/4" plate
174. Teal G-Fenton Lotus and Grape Vt. bonbon
175. Yellow Vas-Fenton Lotus and Grape Vt. 6 1/2" ball ftd bowl
176. M-Fenton Concord 8 1/2", 3 in 1 edge bowl, rich color
177. Lime Vas Opal-Fenton Peacock and Grape 8", spat ftd, ICS bowl, scarce
178. Moonstone-Fenton Dragon and Lotus 9" bowl, very scarce
179. MMG-Westmoreland Carolina Dogwood 8 3/4" bowl, nice piece
180. Jadite-Fenton Dolphins fan vase, not iridized
181. Tangerine stretch-Fenton Dolphins fan vase, scarce color
182. P-Fenton Dolphin round compote, marked Fenton in oval
183. Exquisite G-Fenton Concord 8 3/4" bowl, impressive color
184. G-N Three Fruits 8", eight ruffle dome base bowl, also nice
185. G-N Leaf and Beads nut bowl w/ rayed interior
186. G-Cambridge Inverted Strawberry 7", round bowl, marked Near Cut
187. G-Fenton Butterflies square bonbon
188. G-Fenton Stippled Rays 9", CRE deep bowl, great shape and color
189. G-Fenton Stippled Rays square bonbon
190. G-Imp Grape 6 1/2" plates, 2 x S
191. Electric G-Imp Scroll Embossed 8" bowl, some would call this emerald
192. G-N Strawberry 9" plate, smooth back
193. G-Cambridge Nearcut cologne bottle, no stopper
194. G-Cambridge Buzz Saw large cruet with stopper
195. G-N Grape and Cable hatpin holder, color top to bottom
196. G-Cambridge Inverted Feather cracker jar with lid, collector favorite
197. G-N Grape and Cable 8 1/2" deeeeeep plate
198. G-Fenton Peacock Tail Quincy Jeweler advertising hat
199. Scarce G-N Rose show bowl, hard to find in green
200. G-Mlbg Poppy compote, scarce and desirable piece
201. G-Mlbg Hanging Cherries 9 1/2" round, flared bowl
202. Radium G-Mlbg Rays and Ribbons 10" bowl
203. Radium G-Mlbg Blackberry Wreath 6 1/4", 3 in 1 bowl, great eye appeal
204. Teal G-Mlbg Rosalind 10 1/4" bowl, a big beauty
205. Radium P-Mlbg Grape Wreath Vt. 8 1/2" bowl, a show stopper for color, whew!!
206. P-Mlbg Swirled Hornail rosebowl
207. Superb P-Mlbg Courthouse 7 1/4" bowl, a dandy example
208. P-Mlbg Peacock at Urn 10 1/4" bowl, nice!
209. Radium P-Mlbg Whirling Leaves 9 1/4" bowl
210. P-Mlbg Fleur-de-Lis 10 3/4" collar base bowl, massive
211. M-Mlbg Trout and Fly 3 in 1 edge bowl, fine satin finish
212. Lav-Mlbg Little Stars 7 3/4" bowl
213. Radium P-Mlbg Blackberry Wreath 9 3/4", ICS bowl, a beautiful piece
214. Soft M-Mlbg Seacoast pin tray, nice color in center
215. P-Grape and Cable banded oval pin tray, nice color
216. G-Grape and Cable oval pin tray, superior iridescence
217. BA-Dugan Wreathed Cherry small berry bowl
218. Lav/Horehound-Dugarn Wreathed Cherry small berry bowl
219. P-Dugan Cherries 5 3/4" berry bowl, Jeweled Heart exterior
220. Rich M-Cosmos and Cane 4 1/2" rosebowl, Headdress interior
221. M-Golden Grape 4 3/4" rosebowl
222. M-N Peacock at Urn 5 1/2" ICS bowl
223. Radium M-Imp Windmill 5 1/2" bowl
224. Powder B-Fenton Kittens banana shape bowl
225. Dark M-Imp Mini Morning Glory 5 1/2" vase
226. M-Imp Rococo vase, loaded with color
227. Lovely Smoke-Imp corn bottle
228. G-Imp Little Barrel
229. Phenomenal Electric P-Imp Pansy nappy, MILLION DOLLAR COLOR!
230. M-Louisa 5 1/4" oval berry dish
231. B-N Poppy pickle dish, a bouquet of color
232. P-Imp Flute breakfast creamer and sugar, nice iridescence on both
233. Stunning M-Fenton Orange Tree loving cup, impressive color
234. Rare B-Imp Flute toothpick holder
235. M-Imp Flute toothpick holder
236. G-Imp Flute toothpick holder
237. Electric P-Imp Flute toothpick holder
238. Lav-1905 Pittsburgh Shriners toothpick holder, age?
239. P-Imp Flute toothpick holder
240. P-N Wishbone and Spades 6 1/2" plate, splendid example
241. Royal B-Fenton Leaf Chain 7 1/2" plate
242. A-Fenton Vintage 7 1/2" plate
243. G-Fenton Vintage 7 1/4" plate
244. Great B-Fenton Vintage 7 1/2" plate
245. G-Imp Grape 6 1/2" plate

- _____ 246. Elec P-Imp Grape 6 1/4" plate, covered in blues and purples
- _____ 247. Extra Nice M-Imp Grape 6 1/4" plate
- _____ 248. **Beguiling B-Fenton Persian Medallion 6 1/4" plate**
- _____ 249. A-Fenton Pine Cone 6 1/4", 12 scallop plate
- _____ 250. **A-Dugan Persian Garden 6 1/2" plate, outstanding color**
- _____ 251. M-Fishscale and Beads 8" plate, covered in yellows and blues
- _____ 252. **PO-Dugan Four Flowers 6 1/2" plate, Basketweave back**
- _____ 253. P-N Grape and Cable master punch bowl, base and nine cups. Top shelf set!
- _____ 254. **Wonderful G-N Acorn Burrs 8 pc punch set, emerald green bowl**
- _____ 255. M-N Dandelion 7 pc water set
- _____ 256. **Super Amber-Imp Ripple 15 1/2" mid-size vase, 6 3/4" opening, scarce 4" base**
- _____ 257. B-Fenton Fine Rib 11 3/4" vase
- _____ 258. **Great M-Dugan Big Basketweave 10 1/2" vase, pinks and blues**
- _____ 259. G-Fenton Long Thumbprint 7 1/2" vase, great look
- _____ 260. **B-Fenton Knotted Beads 9 1/4" vase, CRE top, attractive**
- _____ 261. B-Fenton Fine Rib 16 1/2" vase
- _____ 262. **Russet-N Four Pillars 10 1/4" vase, ribbed interior, good feet**
- _____ 263. M-Imp Zipper Loop 9 1/4" lamp, 5 5/8" base

- _____ 264. **BA-N Tree Trunk 13" mid-size, plunger base vase. Makes a statement!**
- _____ 265. A-N Grape and Cable 9 3/4" bowl
- _____ 266. **B-Fenton Peacock at Urn 9 1/2" plate**
- _____ 267. B-Fenton Persian Medallion large compote w/ crimped 3 in 1 edge, nice
- _____ 268. **M-Fenton Stream of Hearts compote**
- _____ 269. P-Imp Acanthus 7 1/2" deep, round bowl
- _____ 270. **A-N Wishbone 8 1/4", ball footed bowl**
- _____ 271. P-N Rose Show bowl
- _____ 272. **B-Fenton Holly 9 1/4", 3 in 1 bowl, splendid example**
- _____ 273. B-Fenton Cherry Chain 9", deep ICS bowl
- _____ 274. **B-Fenton Two Flowers 8", round, flared, spat ftd bowl**
- _____ 275. B-N Good Luck bowl, rib exterior
- _____ 276. **M-N Good Luck Vt. 9" plate, BW exterior**
- _____ 277. Pumpkin M-N Good Luck PCE bowl, rib exterior
- _____ 278. **B-Fenton Little Flowers 10", 3 in 1 bowl, impressive size and color**
- _____ 279. Dark A-N Stippled Rays 9 3/4" PCE bowl, BW exterior
- _____ 280. **Great M-Dugan Vintage 9 1/4" dome base plate, scarce and wonderful**
- _____ 281. Lime G-N Peacocks 9" plate, great example
- _____ 282. **Scarce Aqua-N Hearts and Flowers 9" bowl, very tough color to find**
- _____ 283. Elec P-N Peacocks 9" bowl
- _____ 284. **M-N Peacock at Urn 10" master ICS bowl, fully stippled and excellent color**

SPECIAL NOTE:

NO SUNDAY CALLS, PLEASE!

Winning Absentee Bidders will be contacted Monday through Wednesday of the week following the Auction!

Thank You!

SEND ALL MAIL TO:

18350 Hunters Ridge Ct.

Boonville, MO 65233

WATCH:  **Web Site: www.AWK-SHN.com**

285. Pumpkin M-N Hearts and Flowers 9" plate, super piece
286. **M-Dugan Fanciful 8 3/4" plate**
287. M-Fenton Water Lily 9", ball footed, ICS bowl, array of pastel colors
288. **B-N stippled Grape and Cable Vt. PCE bowl, another winner!**
289. Deep G-Fenton Grape and Cable 8", ball ftd bowl
290. **B-N Embroidered Mums 9" bowl, fine looking piece**
291. G-Fenton Feathered Serpent 9" round, flared bowl
292. **Dark P-N Poinsettia and Lattice 8 1/2", ball ftd bowl**
293. P-Dugan Four Flowers 9 3/4" bowl, vivid iridescence
294. **P-Dugan Victorian 11" bowl, always in demand, especially this nice**
295. B-Fenton Stag and Holly 8", spat ftd bowl
296. **Scarce M-Fenton Stag and Holly 9 1/4", spat ftd plate, radium**
297. M-Fenton Peacock and Grape 9", spat ftd plate, lots of pinks
298. **Amber-Imp Open Rose 9" plate, golds, purples and blues**
299. Red-Fenton 2 row O.E. 7 1/2" plate, not iridized
300. **Cherry Red-Fenton Little Flowers 10" bowl, red iridescence**
301. Red Amberina-Fenton Little Flowers 10" bowl, another scarce one
302. **Oxblood-Dugan Cosmos Vt. 10" bowl, truthfully, this looks RED**
303. Red-Fenton Persian Medallion four sides up bonbon, fabulous iridescence
304. **Red-Fenton Holly 9" bowl**
305. Cherry Red-Fenton Holly 6" ruffled hat
306. **Red Amberina-Fenton Dragon and Lotus 8 3/4", ICS bowl**
307. Red Amberina-Fenton Blackberry Open Edge 6 1/2" basket
308. **PO-Dugan Four Flowers 10 5/8" chop plate, verry nice plate**
309. P-Louisa rosebowl
310. **Rich M-Fenton Dragon and Lotus 7 3/4", spat ftd bowl**
311. M-Fenton Persian Medallion hair receiver
312. **P-N Beaded Cable rosebowl, rayed interior**
313. Splendid G-Fenton Horse Medallion 8", ball ftd bowl, WOW!
314. **B-Fenton Horse Medallion JIP 8" bowl**
315. Splashy M-Fenton Horse Medallion 7 3/4" plate
316. **Deep B-Fenton Horse Medallion rosebowl, well struck and well colored**
317. Pumpkin M-Fenton Vintage fernery
318. **AO-N stippled Three Fruits 8 3/4" bowl, premium color**
319. Pastel AO-N stippled Three Fruits Medallion 9", spat ftd bowl
320. **Pastel AO-N Rose Show bowl, great opal**
321. Staggering Celeste Blue-Fenton 3 row Open Edge 8 1/2" ICS bowl, show stopper!
322. **Ice B-N Embroidered Mums 8 3/4" bowl, scarce plain exterior**
323. Ice B-N Grape and Cable banana boat, great pastel iridescence
324. **Ice B-N Poppy Show 9 1/4" plate, very scarce item**
325. M-Dugan Vintage Grape powder dish and lid
326. **Radium M-Dugan Cosmos Vt. 10" bowl**
327. A-Fenton Captive Rose 9" bowl, great color
328. **G-Fenton Captive Rose 9 1/4" plate**
329. B-Fenton Captive Rose 9 1/4" plate
330. **A-Fenton Captive Rose 9" plate**
331. B-Fenton Peacock at Urn 9 3/8" plate, multi electric
332. **B-Fenton Orange Tree 9 1/4" plate, trunk center**
333. B-Fenton Persian Medallion 9 1/4" plate
334. **G-Imp Hattie 10 1/4" chop plate**
335. PO-Dugan Stippled Petals tri-corner bowl
336. **Aqua-N round Bushel basket, scarce color and nice iridescence**
337. B-N round Bushel basket, super color inside
338. **P-N round Bushel basket, pretty**
339. Pastel AO-N round Bushel basket
340. **AO-N Leaf and Beads rosebowl, pretty pastels**
341. AO-N Daisy and Grape vase
342. **AO-N Dandelion mug**
343. M-Fenton Peacock at Urn compote
344. **Frosty W-N Corn vase, plain base**
345. P-N Corn vase, stalk base
346. **P-Dugan Lined Lattice 4 1/2" squatty vase, 6" opening, killer color**
347. Amber-Imp Ripple 7 1/2" vase, lots of pinks and blues
348. **P-Dugan Lattice and Points 4 3/8" vase, no daisy in base**
349. P-N Tornado 6 1/4" vase, chip on base
350. **M-Blackberry Open Edge 7" vase, very rare and very desirable**
351. P-N Grape and Cable master punch bowl base, got the bowl?
352. **G-Imp Grape 6 1/2" plate**
353. M-Scroll Embossed large compote, Eastern Star exterior
354. **Magnificent M-Illinois Soldiers and Sailors Home 8" plate, the best!**
355. Postcard: Birds Eye View of Soldiers and Sailors Home, Quincy, Illinois, postmarked 1918
356. **B-Fenton 1910 Elks 7 1/4" bowl, always in demand**
357. Electric B-N Poppy Show 9 1/2" plate
358. **Renninger B-N stippled Good Luck 9" plate, rib exterior, scarce color**
359. Dark A-N Poinsettia and Lattice 8 3/4", ball ftd bowl, beautiful but three points are gone
360. **B-N stippled Three Fruits 9 1/4" plate, fantastic electric--one of the best out there**
361. M-Imp Chrysanthemum chop plate, marked IG, super
362. **AO-Fenton Cherry Chain 10", 12 ruffle bowl, marked Fenton in oval**
363. PO-Fenton Drapery 8 1/2", ball ftd, CRE bowl, marked Fenton in oval
364. **AO-Fenton Grape and Cable 10", deep, ruffled, CRE bowl, marked Fenton in oval**
365. Smoke-Imp #529 9 3/4" vase, marked IG
366. **Smoke-Imp Fancy Flowers 8 1/2" bowl, dome base w/ sawtooth edge, marked IG**
367. Smoke-Imp Scroll and Flower Panels 10" vase, marked IG
368. **Red-Imp Diamond Point and Open Lace footed candy dish, marked IG**
369. M-Imp Lustre Rose 8 1/4", ball footed bowl, marked IG
370. **M-Imp Grape salt and pepper shakers, marked IG**
371. Smoke-Imp Grape tumblers, 2 times \$, marked IG
372. **Red-HOACGA 1991 Peacock and Grape 6 3/4" plate**
373. P-Fenton Persian Medallion 8" bowl, marked Fenton in oval
374. **P-Fenton 8 1/2" tall handled basket, with ball feet and CRE edge, mkd Fenton in oval**
375. P-Fenton Heavy Grape 5 7/8" bowl, marked Fenton in oval
376. **B-Fenton Cherry Chain rosebowl, Orange Tree exterior, marked Fenton in oval**
377. P-Fenton Persian Medallion 7 1/2", 12 ruffle bowl, marked Fenton in oval
378. **P-Fenton Orange Tree rosebowl, marked Fenton in oval**
379. BA-Fenton Swan mug, marked Fenton in oval
380. **P-Fenton Butterfly and Berry tumbler, marked Fenton in oval**
381. Sapphire-Near Cut Inverted Strawberry tumbler, marked with "B"
382. **B-St Clair Wildflower goblet--contemporary**
383. B-St Clair Chrysanthemum Sprig toothpick holder--contemporary
384. **Cobalt B-St Clair Cactus tumbler--contemporary**
385. B-St Clair Fan and Feather covered sugar--contemporary
386. **P-Westmoreland Stork in Rushes creamer, sugar, spooner, all for one price**
387. Amber-Indian Glass Grape cannister--contemporary
388. **G-Imp Grape 6 3/4" plates, 2 times \$**
389. Deep P-Fenton Leaf Chain 6 1/2" deep footed bowl, marked Fenton in oval
390. **BA-Stag and Holly 9 1/2", ball ftd bowl--contemporary**

The sale concludes with several lots of contemporary carnival glass, a few old carnival glass items, carnival glass box lots, carnival glass books and plate holders.
Thanks for attending!!!

Call Today To Sell Your Fine Items
660-882-5292 Day
660-882-5283 Evening

CARNIVAL GLASS
OPEN TO PUBLIC NO
Saturday - February 16, 2013
Additional Preview Date: Friday - Feb

Richard Lueck Co
Select items from England,

Mickey Reichel A

Go to the web site for

www.awk.com

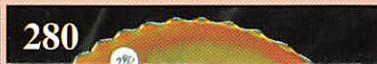
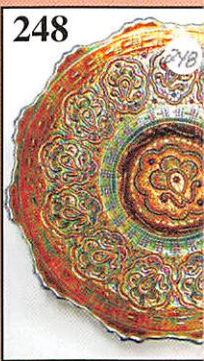
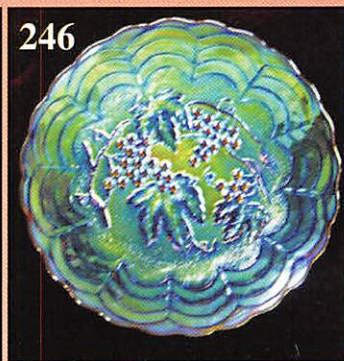
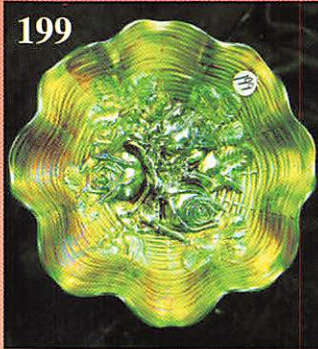
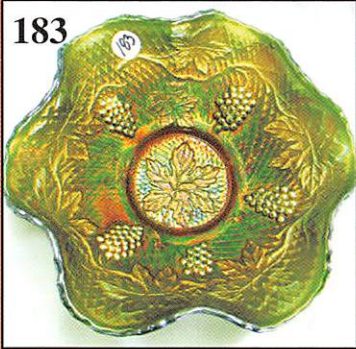
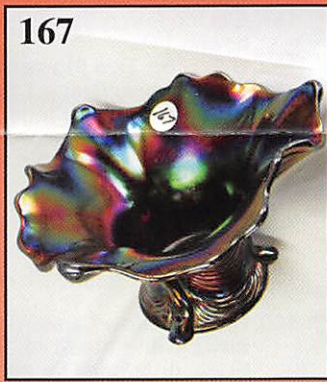
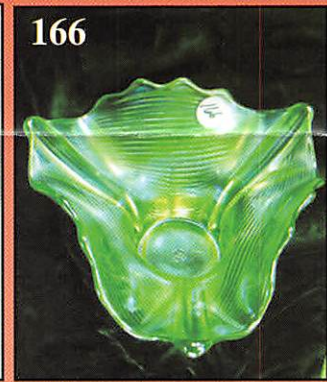
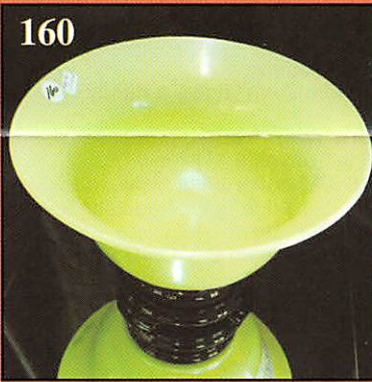
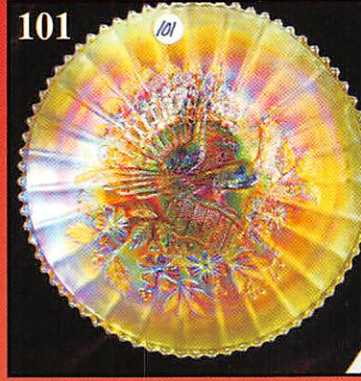
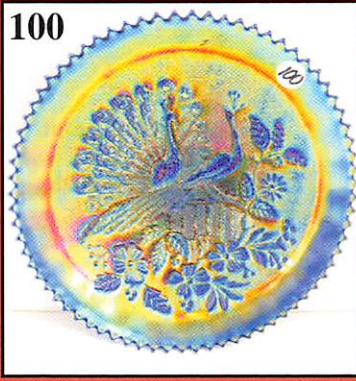
Auction held inside the Mich

660-882-5292 • 1440 Ashle

Smoke Free • Climate Controlled

1 Mile N. of I -70 on Hwy 5 Exit 101, Boo

Auction Zip ID



MASS AUCTION

NO BUYERS PREMIUM

at 9:00 am (Preview: 7:30 am)

February 15, 2013 at 12:00 pm to 5:00 pm

Collection • Colorado

Kansas & Alabama sellers

Antique & Auction

for a free photo tour

www.reichels-hn.com

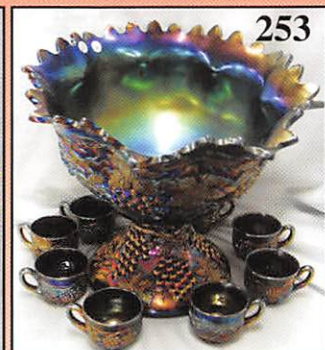
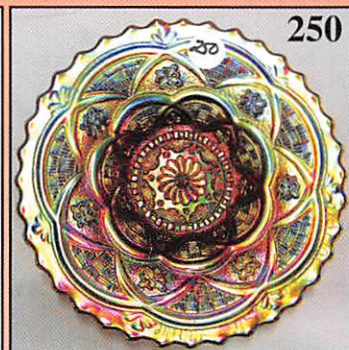
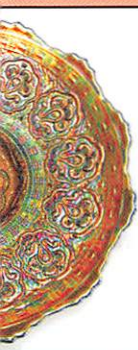
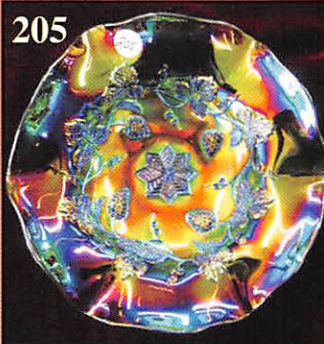
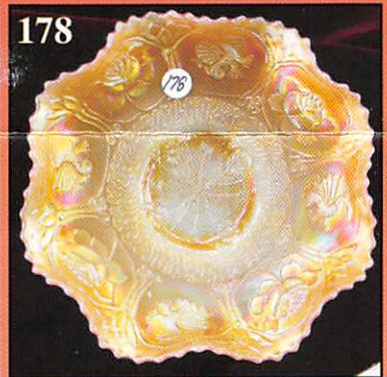
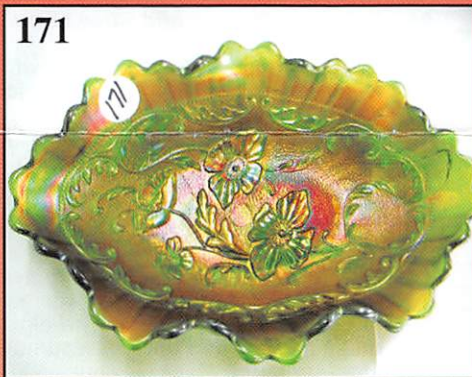
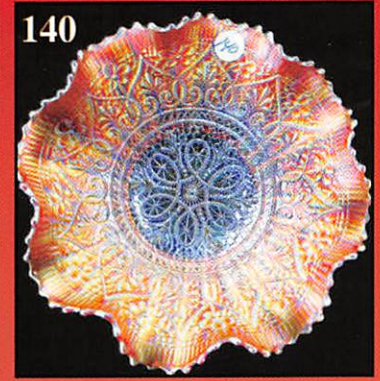
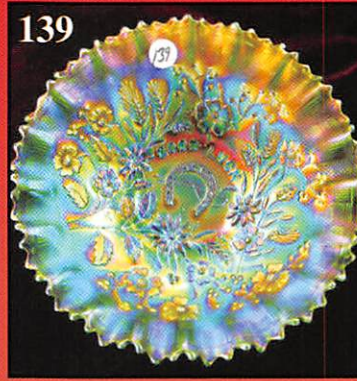
Reichel Auction Gallery

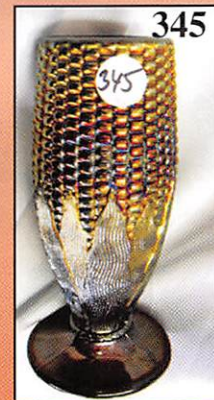
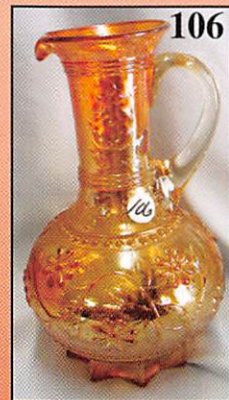
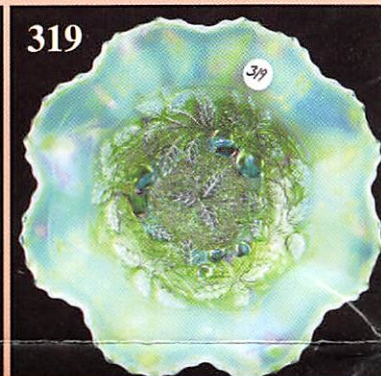
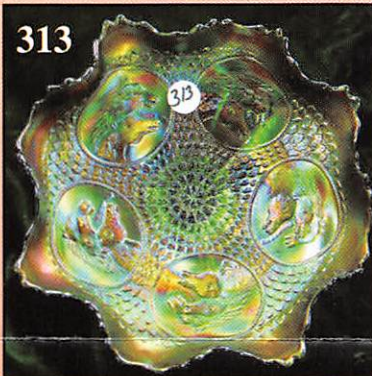
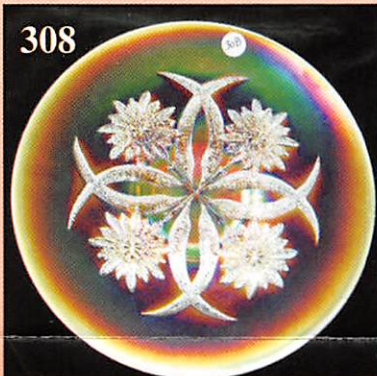
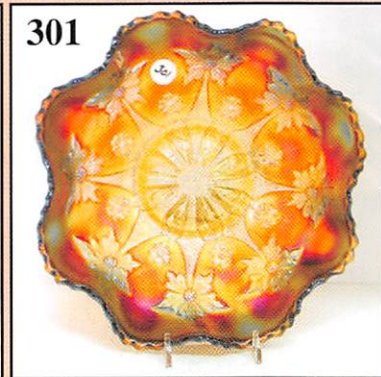
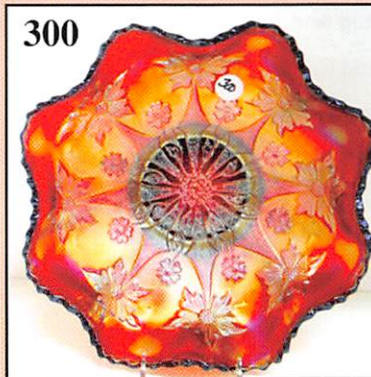
101 N. Main St. • Boonville, Missouri

• 33 Years in the Same Location

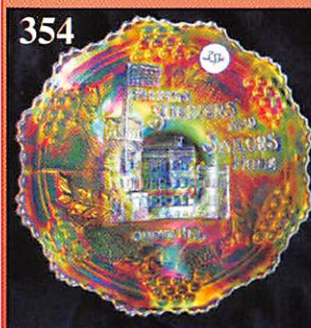
Boonville, MO 20 Miles W. of Columbia, MO

Phone Number 2175

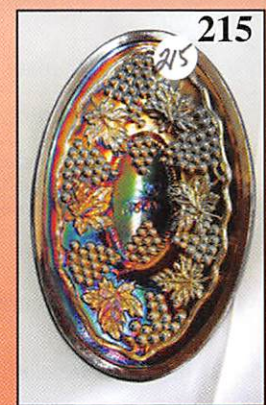
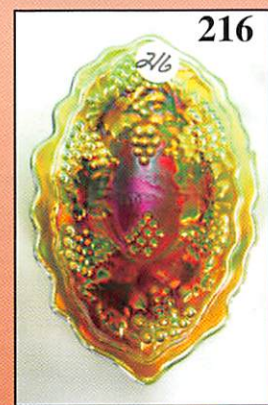
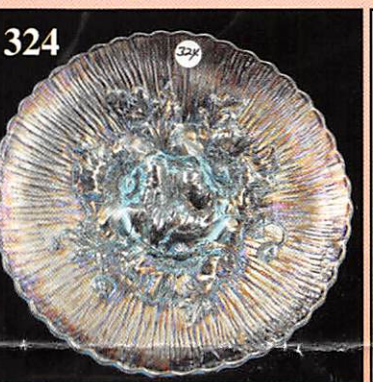
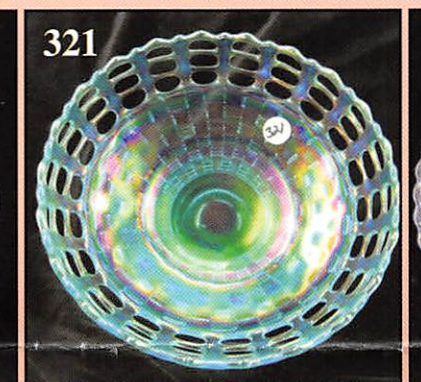
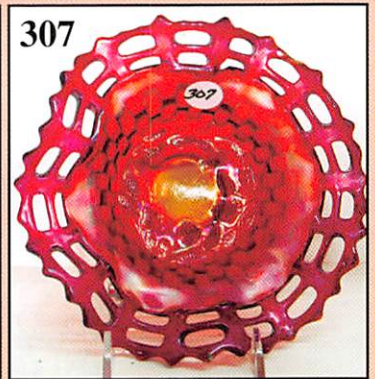
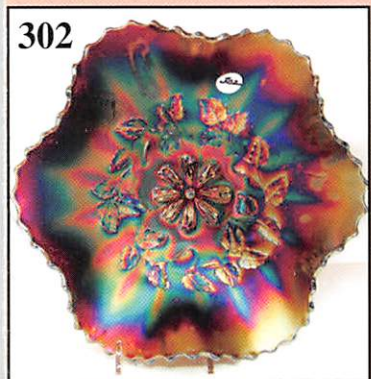




Make Reservations **EARLY** at one of these local motels:
 Days Inn: 660-882-8624
 Comfort Inn: 660-882-5317
 Super 8: 660-882-2900
 Holiday Inn: 660-882-6882
Mickey Reichel Auction Center
 1 Mile North of I-70 on Hwy. 5, Exit 101, Boonville, Missouri, 20 Miles West of Columbia, MO on I-70
 **TERMS:** Cash or Good Check, VISA and MasterCard accepted. 
 5% Clerking Fee on all purchases except for payment of cash or check.
 Proper I.D. required.



* * * *No return on any items once sold*
 (No Exceptions)



★★★NO BUYERS PREMIUM★★★
 ABSENTEE BID POLICY:
 PLEASE NOTE: There is a \$6 handling charge for each successful bid which will be added to the selling price for all write-in bids. This is in addition to the cost of postage, insurance and packing. Your write-in bid will be entered just as if you are present and bidding. Successful bidders will be notified in 1 to 3 days by the auctioneer (so be sure to include your phone number). Direct mail bids to Auctioneer Mickey Reichel, 18350 Hunters Ridge Ct., Boonville, MO 65233-2971. Terms: Cash or Check accepted with proper I.D. and Social Security Number and References. Announcements made day of the auction supercede all printed material. Not Responsible for Accidents or Sold Items. Call in Bids before Auction Welcome!
 Call for additional information: 660-882-5292 days or 660-882-5283 evenings before 9:00 p.m.
 FAX: 660-882-5292 (evening hours start FAX transmission after beep)
 E-mail: mreichel@AWK-SHN.com
 Web Site: www.awk-shn.com

They leave the Auction Center * * *
 (options)

SEE REVERSE FOR DETAILS