

1. M-Meydam by Baxendale 5 1/4" flared compote
2. **M-Serpentine Rose 5" footed bowl**
3. Lot of 3 marigold carnival glass pieces, see photo
4. **PO-Dugan Cherries 8 1/2" CRE footed bowl**
5. PO-Dugan Soutache 9" plate
6. **PO-Folding Fan 6 1/2" compote**
7. PO-Westmoreland Intaglio Flower miniature basket, looks like moonstone
8. **B-Dugan Big Basketweave 9" vase**
9. Ice G Vaseline-Optic Smooth 16 1/2" vase, glows like crazy
10. **Russet-N Thin Rib 11" vase**
11. Elec B-Fenton Panels 12" vase
12. **M-#251 9 1/2" vase**
13. M-Imp Ripple 6" squatty vase, sharp detail
14. **M-Imp Morning Glory 9 1/2" JIP vase**
15. M-Imp Ripple 10 1/2" vase, big 4" base, good mold work
16. **Smoke-Imp Smooth Panels 12" vase**
17. Smoke-Imp 10" handled basket, stretchy, deep smoke
18. **M-Imp Wide Interior Panels 7" vases, 2 for one price!**
19. M-Diamond Heart 5 1/4" vase
20. **M-Fenton Fine Rib 5 1/2" ruffled vase, extra nice**
21. M-Spearhead and Rib 15 1/4" vase
22. **M-Spearhead and Rib 16 1/4" vase**
23. M-N Flute 13 1/4" mid-size vase, very pretty
24. **M-N Tree Trunk 10 3/4" vase, pumpkin**
25. G-Fenton April Showers 11" vase, loaded with color
26. **Smoke-Imp Mini Morning Glory 5 1/2" vase, 4" top**
27. Elec P-Imp Mini Morning Glory 7 1/2" vase
28. **M-Imp Mini Morning Glory 5 1/2" vase, 4 1/4" opening**
29. Pastel M-Imp Mini Morning Glory 6 3/4" vase
30. **P-N Singing Birds mug**
31. B-Enameled Cherries tumbler
32. **Ball Ideal fruit jar, iridized, different**
33. Crystal flask Clyco Thymoline mouthwash bottle, iridized
34. **P-N Raspberry milk pitcher, pretty**
35. G-N Grape and Cable water pitcher, multi-color beauty
36. **W-Fenton Holly 9 1/2" plate**
37. M-Stippled Rays 9 1/2", 3 in 1 edge bowl
38. **Light M-Fenton Holly 9 1/2" plate**
39. G-Coin Dot 9", 3 in 1 edge bowl
40. **B-Fenton Captive Rose 9" plate**
41. M-Fenton Banded Blackberry ruffled hat
42. **B-Fenton Holly 7" square, ruffled hat, gorgeous**
43. M-Fenton Persian Medallion hair receiver
44. **M-Fenton Grape and Cable 9 1/4" spat ftd plate**
45. G-Fenton Wreath of Roses ruffled compote
46. **B-Fenton Scotch Thistle 6" crimped edge compote**
47. A-Coin Dot 9 1/2" bowl, very nice example
48. **M-Fenton Pepper Plant hat**
49. M-Fenton Dragon and Lotus ICS bowl, silver finish
50. **Cobalt-Fenton Dragon and Lotus 8 3/4" ICS bowl, extraordinary black amethyst looking finish on interior (not iridized on interior), never seen one quite like it**
51. B-Fenton Persian Medallion 9" plate
52. **Great M-Fenton Dragon and Lotus ICS bowl**
53. M-Fenton Blackberry Spray 7" JIP CRE hat
54. **Vas-Fenton Blackberry Spray 2 sides up hat, only 2 sets of berries**
55. Dark A-Fenton Grape and Cable 8" spat ftd bowl
56. **A-Fenton Open Edge Blackberry 6" hat**
57. B-Fenton Autumn Acorns 9" bowl
58. **G-Fenton Little Flowers 9 3/4", 3 in 1 edge bowl**
59. A-Fenton Little Flowers 10 1/2" bowl
60. **G-Fenton Peacock at Urn compote, very scarce to find in green**
61. G-Fenton Birds and Cherries compote, also nice
62. **G-Fenton Vintage compote**
63. A-Fenton Blackberry Bramble compote
64. **G-Fenton Ribbon Tie 8 3/4" bowl and a nice one**
65. M-Fenton Acorn 6 1/4" nut bowl
66. **Powder B-Fenton Panther 5 1/2" round bowl**
67. Odd Blue-Fenton Grape and Cable 7 1/4" bowl
68. **A-Fenton Vintage fernery**
69. M-Fenton Cherry Chain 6 1/4" sauce
70. **M-Fenton Persian Medallion 6 1/4" plate, with opal swirls. Cool!!!**
71. B-Fenton Captive Rose 8 3/4" bowl
72. **G-Fenton Vintage 7 3/4" CRE bowl**
73. Vas-Fenton Persian Medallion bonbon, looks vaseline
74. **Lovely M-Fenton Orange Tree 10 1/2" orange or fruit bowl**
75. Pastel M-Fenton Mikado 9 1/2" compote
76. **M-Fenton Orange Tree 9 1/2" master berry bowl**
77. Very Scarce W-Stippled Rays w/ Scale Band 10 1/4" bowl, wow!
78. **M-Stippled Rays w/ Scale Band 6 3/4" plate**
79. Clambroth-Fenton Leaf Chain 8 1/2" ICS bowl
80. **Light M-Dugan Persian Garden 6 1/2" plate, Basketweave exterior**
81. W-Dugan Persian Garden/Pool of Pearls 6 3/4" plate, nice
82. **W-N Nippon PCE bowl, pastel yellows and blues, BW exterior**
83. W-N Grape Arbor hat whimsied from tumble
84. **W-Dugan Puzzle banana shape compote**
- 84A. **W-Dugan Question Marks 7 1/4" plate, multi pastel**
- 84B. **W-Dugan Roundup 9", 3 in 1 edge bowl**
85. A-Dugan 7 1/2" Plain Jane w/ Leaf and Rosettes on reverse tri-corner plate
86. **A-Fenton 9" Grape and Cable spat ftd plate**
87. A-N Grape and Cable 9" plate
88. **Smoke-Imp Diamond Ring 9" bowl, great iridescence**
89. B-St. Clair Grape 4" berry dishes, 4 x \$
90. **M-Headdress/Curved Star compote**
91. M-Headdress/Curved Star round compote
92. **M-Dugan Roundup 8 3/4" plate**
93. Shriners 1909 Louisville, Ky champagne
94. **M-Fenton Strawberry bonbon**
95. P-N Three Fruits 9" plate
96. **Rich M-Fenton Holly 6 3/4" CRE hat**
97. G-N Tree Trunk Vt. 7 1/2" squatty vase
98. **G-N Tree Trunk Vt. 11 1/4" vase**
99. Russet-N Thin Rib 10" vase
100. **Pumpkin M-N Thin Rib 14 1/4" mid-size vase**
101. G-N Fine Rib 8" vase
102. **M-N Flute 13" mid-size vase**
103. Russet-N Four Pillars 12" vase
104. **BA-N Four Pillars 10" vase**
105. M-N Thin Rib 7" squatty vase
106. **M-Rustic Variant 17 1/2" mid-size vase, nine flames**
107. G-Rustic Variant 16 3/4" mid-size vase, nine flames
108. **P-Rustic Variant 12" mid-size vase, nine flames**
109. M-Rustic Variant 16 1/2" mid-size vase, ten flames
110. **G-Rustic Variant 15 1/4" mid-size vase, ten flames**
111. B-Rustic Variant 16 1/2" mid-size vase, nine flames
112. **B-Fenton Rustic 8 1/2" vase**
113. M-Interior paneled 9 1/2" vases, 2 x \$
114. **M-Imp Mini Morning Glory 6 3/4" vase**
115. M-Standard 6 1/2" vases, 2 x \$
116. **Super M-Imp Beaded Bullseye 11 3/4" vase**
117. Great M-Imp Beaded Bullseye 11 1/2" vase
118. **M-Imp Flute 11" vase, serrated top**
119. M-Imp Ripple 12" vase
120. **Dark M-Imp Ripple 8" vase**
121. Ice G Vas-Stretch 9 3/4" flared bowl
122. **Celeste B-Stretch 7" rosebowl**
123. Celeste B-Stretch 8 3/4" float bowl
124. **Green Ice-Imp stretch optic 12-paneled Wide Panel 8 3/4" bowl, sensational**

125. M-Fenton Orange Tree flared punch bowl, base, two cups. Fabulous base!
126. Amber w/ applied gold huge (39" around) bulbous lamp shade, age unknown
127. Red-Fenton Blackberry Spray 6" hat, only two sets of berries
128. P-Dugan Ski Star 5 3/4" berry bowl
129. Ice G-N round Bushel basket, colorful
130. P-N Wild Strawberry 9 3/4" bowl
131. G-Fenton Holly 9" bowl, glows nicely
132. Honey Amber-Dugan Windflower 8 3/4" bowl, lovely pastels
133. Pink-Dugan Apple Blossom 7 1/2" bowl
134. Radium M-Fenton Peacock and Grape 8" ICS bowl
135. BA-Fenton Persian Medallion 6 1/4" plate
136. BA-Basketflower hatpin
137. BA-Six Plums hatpin
138. Pastel M-Mlbg Blackberry Wreath 10 1/2" bowl
139. G-Fenton Dragon and Lotus 8 3/4" bowl, enticing color
140. P-Mlbg Seaweed 10", 3 in 1 edge bowl, outstanding
141. M-Imp Grape 7 pc. water set
142. M-Fenton Butterfly and Berry tumblers, 6 x \$
143. Elec P-N Grape and Cable tumbler
144. P-Imp Grape tumbler, radium finish
145. M-Fenton Butterfly and Fern tumblers, 3 x \$
146. M-N Grape Arbor tumbler
147. M-Fenton Fine Cut Flower compote
148. M-Imp 474 punch cups, 12 x \$
149. M-Imp Grape tumblers, 5 x \$
150. M-Imp Grape 6 piece wine set
151. M-Imp Pillar Flute 6" vase
152. G-Fenton Stag and Holly 8" spat ftd bowl, silver finish
153. M-Persian Garden 6 1/4" plate
154. Radium M-Mlbg Primrose 9 1/2" bowl, excellent color
155. G-Mlbg Grape Wreath Vt. 7 3/4" flared bowl, 8 pointed star center
156. M-Field Thistle 9 1/2" plate
157. M-Mlbg Holly Sprig card tray shape bonbon
158. M-Mlbg Whirling Leaves 9" tri-corner bowl
159. P-Mlbg Peacock Tail Vt compote, radium golden finish
160. M-Mlbg Strawberry Wreath compote
161. M-Mlbg Leaf and Little Flower round compote
162. Pumpkin M-Fenton Leaf Chain 7 3/4" plate
163. M-Mlbg Leaf and Little Flower round compote, worn in center
164. Ice B-N Nippon PCE bowl
165. Ice B-N Drapery 7" tri-corner bowl
166. Ice B-N Hearts and Flowers bowl, rib exterior
167. P-N Grape and Cable 9" plate
168. P-N Stippled Rays 9 1/4" bowl, BW exterior
169. Super M-N Three Fruits 9" plate, pinks galore
170. Rich M-N Good Luck Vt. 9" plate, BW exterior
171. Lav-N Grape and Cable 6 1/4" handgrip plate
172. M-N stippled Three Fruits plate, rib exterior
- 172A. G-N Wishbone 9 3/4" bowl, rainbow iridescence
173. G-N Wishbone 8" footed bowl, lots of color
- 173A. P-N Wishbone 8 1/2" footed plate
174. Elec B-N Good Luck 8 3/4" bowl
- 174A. P-N Acorn Burrs sugar w/ lid, find one prettier!
175. A-N Good Luck Vt. bowl, BW exterior
176. P-N Strawberry 9" plate
177. P-N round Bushel basket, electric interior
178. BA-N Poinsettia and Lattice 8 3/4" bowl
179. Pumpkin M-N Fine Cut and Roses rosebowl
180. G-N Grape and Cable 9 3/4" bowl, very nice
181. P-N Three Fruits 8 3/4" bowl
182. Rich M-N Acorn Burrs 5 pc. berry set
183. P-N Grape and Cable 7 1/2" bowl
184. P-N Singing Birds mug
185. M-N Raspberry gravy boat, scarce
186. P-N Peacock at Urn 5 1/2" ICS sauce
187. B-Fenton Orange Tree 9 1/2" plate
188. W-Fenton Orange Tree 9 1/2" plate, pretty pastels
189. W-Fenton Leaf Chain 9" bowl, blue highlights
190. M-Fenton Horse Medallion 6 1/2" round, flared bowl
191. M-Fenton Horse Medallion JIP footed bowl
192. M-Fenton Peacock and Grape 9" spat ftd plate
193. B-Fenton Pine Cone 6 1/4" saucer/plate
194. A-Fenton Vintage 8 1/2" bowl
195. M-Fenton Butterflies card tray bonbon
196. M-Fenton Vintage round 7 pc berry set
197. M-Fenton Lions 7 1/4" bowl, very detailed
198. M-Fenton Cherry Circles 7" round bonbon
199. M-Fenton Cherry Circles 9" card tray shape bonbon
200. Red Slag-Fenton Lotus and Grape Vt. card tray shape bonbon, scarce
201. G-Fenton Thistle 8" ICS bowl
202. M-Fenton Horse Medallion 7 3/4" plate, great example
203. B-Fenton Peacock at Urn ruffled bowl, super green iridescence
204. B-Fenton Peacock at Urn 9 1/4" plate, very colorful bird
205. M-Fenton Butterfly and Berry 8" vase, CRE top
206. Teal-Fenton Water Lily 9 3/4", footed bowl, rare color
207. M-Fenton Diamond and Rib 10" vase
208. Dark Aqua-Fenton Leaf Chain 7" bowl, scarce color
209. B-Fenton Fine Rib 10 3/4" bowl, a honey
210. B-Fenton Chrysanthemum/Windmill deep, ball ftd fruit bowl, super piece
211. M-Fenton Little Flowers 5 3/4" round sauce
212. B-Fenton Pine Cone 7 1/4" bowl
213. M-Fenton Water Lily 5 3/4" ftd sauce
214. M-Fenton Panther 5 1/2" bowl
215. B-Fenton Blackberry Spray 7", 2 sides up hat, super silver finish
216. M-Fenton Strawberry bonbon
217. P-Dugan Grape Delight rosebowl
218. W-Dugan Leaf Rays spade shape nappy, loaded w/ pastels
219. Elec P-Imp Scroll Embossed 5 1/2" bowl, File exterior
220. P-Dugan Petal and Fan 6 1/2" bowl
221. P-N Lustre Flute hat
222. P-Imp Scroll Embossed 9 1/2" plate
223. G-Imp Scroll Embossed 9 3/4" plate, helios
224. Elec P-10" handled basket, paneled interior, Imperial? Showstopper!
225. M-Bird w/ Grapes large wall pocket
226. M-Fenton Heart and Vine 8 3/4" bowl, great example
227. Smoke-Imp Smooth Rays 9" plate
228. G-N Blackberry 7" compote
229. Dark M-Imp Diamond Lace 9" round, flared bowl
230. M-Fenton Orange Tree loving cup
231. M-Dugan Question Marks stemmed bonbon
232. G-N Lead and Beads nut bowl, Sunflower interior, gaudy!
233. P-N Singing Birds 7 pc. water set. A desirable set.
234. G-Four Flowers Vt. 9 1/4" plate
235. P-Four Flowers Vt. 9 1/2" plate
236. M-Australian Kingfisher 9 1/2", 12 ruffle bowl
237. M-Imp Star and File 5" rosebowl
238. A-Dugan Cherries 8 1/2", ten ruffle, footed bowl
239. M-Imp Pansy 9" bowl
240. M-Imp Double Dutch 8 3/4" footed bowl, very nice
241. M-Dugan Maple Leaf 7 pc water set
242. M-Dugan Vineyard 5 pc water set
243. M-Dugan Pulled Loops 11" vase
244. PO-Dugan Pulled Loops 10" vase
245. M-Dugan Target 9" vase
246. Yellow Amber-Corinth 9 1/2" vase
247. Purple-Corinth 9" vase
248. Aqua-Corinth 8" low bowl

- _____ 249. P-Westmoreland 270 5" compote
- _____ 250. Dark Aqua-Concave Flute 8 3/4" vase, striking!
- _____ 251. M-Dugan Twigs bud vase
- _____ 252. P-Dugan Lined Lattice 10" vase
- _____ 253. BA-Fenton Spearhead and Rib 16" vase, 12" front height, two spouter!
- _____ 254. Tangerina-Fenton Orange Tree mug
- _____ 255. M-Headdress/Curved Star 9" bowl
- _____ 256. Radium M-Dugan 8 1/2" Pony bowl
- _____ 257. M-Soda Gold 5 3/4" tall handled basket
- _____ 258. M-Dugan Big Basketweave 7" handled basket
- _____ 259. M-Imp Heavy Grape 7 3/4" plate
- _____ 260. Lot of 4 BA carnival buttons with spiders on them, sells as lot
- _____ 261. 52" strand of carnival glass beads
- _____ 262. BA-Top O the Morning hatpin
- _____ 263. BA-Carnival glass hatpin, unknown pattern
- _____ 264. PO-Ski Star 6 1/2", CRE plate
- _____ 265. Celeste B-Pastel Swan salt
- _____ 266. M-Fenton Diamond and File 9 1/4" two sides up plate
- _____ 267. M-Dugan Wreath of Roses rosebowl
- _____ 268. PO-Dugan Single Flower Framed 8" handgrip plate, CRE
- _____ 269. M-Cambridge Inverted Feather parfait

- _____ 270. M-Imp Premium 8 1/2" candlesticks, pair
- _____ 271. M-Imp Premium 8 1/2" candlesticks, pair
- _____ 272. Green Ice-Imperial stretch 8 5/8", 14 panel plate
- _____ 273. G-Imp Grape 9" bowl, helios
- _____ 274. Light Teal-Louisa rosebowl
- _____ 275. P-Grape Delight nut bowl
- _____ 276. M-Absentee Blackberry 4 1/4" compote
- _____ 277. BA-Fenton Persian Medallion 8" bowl, marked w/ Fenton in Oval
- _____ 278. M-Fenton Coin Dot 7 1/2" bowl
- _____ 279. M-Imp Heavy Grape 7 3/4" plate
- _____ 280. G-Imp Heavy Grape 8" plate
- _____ 281. Pastel M-Imp Grape 9 1/4" low-ruffled bowl, shimmering!
- _____ 282. Pastel M-Imp Acanthus 10" plate
- _____ 283. M-Imp Scroll Embossed 9 1/4" bowl, File exterior
- _____ 284. Powder B-Fenton Peacock and Grape 8" spat ftd bowl
- _____ 285. G-Westmoreland Shell and Jewels creamer and sugar w/ lids
- _____ 286. Clambroth-Fenton Leaf Chain 9 1/2" bowl
- _____ 287. M-Dugan Grapevine and Lattice 7" plate
- _____ 288. P-Imp Heavy Grape 10" master berry bowl
- _____ 289. Light M-Chrysanthemum/Windmill 9" bowl

SPECIAL NOTE:

NO SUNDAY CALLS, PLEASE!

Winning Absentee Bidders will be contacted Monday through Wednesday of the week following the Auction!

Thank You!

SEND ALL MAIL TO:

18350 Hunters Ridge Ct.

Boonville, MO 65233

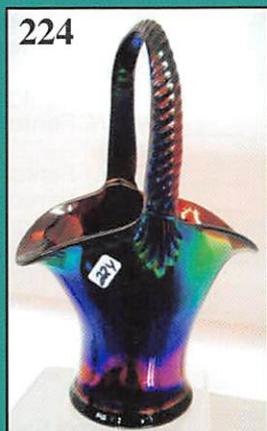
WATCH:  **Web Site: www.AWK-SHN.com**

290. G-Imp Hattie 10 1/4" chop plate
 291. M-Fenton Concord 9" bowl
 292. M-Fenton Leaf Chain 9" bowl
 293. G-Westmoreland Shell and Jewels creamer and sugar w/ lids
 294. Yellow Vas-Fenton Fine Rib 12" vase
 295. P-N Thin Rib 11" vase, multi electric
 296. M-Dugan Big Basketweave 8 1/2" vase
 297. A-Fenton Diamond and Rib 10 3/4" vase
 298. A-Fenton Diamond and Rib 10 3/4" vase, tulip top
 299. A-Fenton Diamond and Rib 10 1/4" vase
 300. Ice B-N Nippon PCE bowl, luscious pastels
 301. PO-Dugan Raindrops 9 1/4" ten ruffle bowl, fantastic example
 302. Ice B-N Nippon PCE bowl, ravishing pastels
 303. M-Fenton Stag and Holly 10 1/2", ball ftd bowl
 304. M-Dugan Garden Path Vt. 8 3/4", ten ruffle bowl, Soda Gold exterior
 305. PO-Dugan Ski Star 10 3/4" bowl, and look, it has Jeweled Heart exterior
 306. PO-Dugan Ski Star 11" bowl
 307. Blue Opal-N Beaded Cable 8", CRE, ftd bowl-not iridized
 308. Blue Opal-Jewel and Fan 8" collar base bowl-not iridized
 309. Blue Opal-N Ruffles and Rings 9 1/2", 3 in 1, ftd bowl-not iridized
 310. Blue Opal-N stippled Three Fruits Medallion 8 3/4", spat ftd bowl-not iridized
 311. Blue Opal-N Peacocks bowl, opal tips only-not iridized
 312. Blue Opal-Grape and Cherry 10" square bowl, crimped edge-not iridized
 313. PO-Dugan Single Flower 9", ten ruffle bowl
 314. PO-Dugan Caroline/Smooth Rays 9" banana shape bowl
 315. M-Dugan Question Marks pedestal bonbon
 316. PO-Dugan Holly and Berry 8" bowl
 317. PO-Dugan Leaf Rays 5 3/4", 7 ruffle nappy, nice pastels
 318. PO-Dugan Target 6" squatty vase, 6 1/2" opening
 319. P-Imp Windmill 5 1/2" ruffled berry bowl
 320. Super M-Imp Windmille 5 1/2" berry bowl
 321. G-Fenton Stippled Rays 9 1/2", 3 in 1 bowl
 322. G-Fenton Stippled Rays 9" CRE bowl
 323. A-Fenton Thistle 7 1/2", CRE bowl
 324. Lav-Pearly Dots 8 1/2" bowl
 325. A-N Plain Jane compote
 326. B-Fenton Cherry Chain 10 1/4" bowl
 327. A-Fenton Wreath of Roses compote
 328. P-N Sunflower 9", spat ftd bowl, pretty
 329. M-Dugan Cherries ten ruffle, ftd bowl
 330. Blue Opal-Westmoreland Carolina Dogwood 9" bowl
 331. M-Fenton Acorn 7 1/4" bowl
 332. G-N Grape and Cable 9 1/4" master berry bowl
 333. Pastel M-Imp Flute 8 1/2" vase, serrated top, 5 1/2" opening
 334. B-N Good Luck bowl
 335. P-N Star of David and Bows ruffled bowl
 336. A-N Stippled Rays 8 3/4" bowl
 337. M-Jain 9 3/4" Fish vase
 338. M-Footed Prism Panels 9 3/8" vase, great example
 339. Soft M-N Feathers 7 1/4" squatty vase
 340. G-N Tree Trunk Vt. 10 1/2" vase
 341. G-N Tree Trunk Vt. 6 3/4" squatty vase
 342. G-N Feathers 10 1/2" vase
 343. M-Fenton Diamond Point Columns 6" squatty vase
 344. G-N Fine Rib 7" squatty vase
 345. M-Fenton Diamond and Rib 10" vase
 346. G-Fenton Diamond and Rib 9 1/2" vase
 347. G-Fenton Long Thumbprint 10 1/4" vase
 348. P-Westmoreland Corinth 9" JIP vase
 349. A-Fenton Long Thumbprint 9" vase
 350. M-Fenton Long Thumbprint Hobnail 9 1/2" vase
 351. M-Fenton Long Thumbprint 7 3/4" vase
 352. B-Fenton Butterfly and Berry 9 1/2" vase
 353. Soft M-Lattice and Points 8" vase
 354. Lime G-Fenton Diamond Point Columns 11 1/2" vase
 355. M-Fenton Butterfly and Berry 6 1/2" vase, CRE top
 356. Russet-N Thin Rib 10 1/2" vase
 357. M-Imp Smooth Panels 7 3/4" vase, serrated top
 358. Teal G-Fenton Dance of the Veils covered candy jar, awesome!
 359. M-Concave Flute 9" vase
 360. Radium M-Spiralex 11" vase
 361. Red-Smith Glass Octagon large square, handled basket, contemporary
 362. Red-Fenton Apple Tree pitcher, contemporary
 363. Red-Fenton Apple Tree tumblers, 6 x \$, contemporary
 364. Red-Dahlia 7 pc water set, contemporary
 365. Red-HOACGA 1974 Good Luck 7 pc water set
 366. Red Amberina-Fenton large Wild Strawberry compote w/ lid, contemporary
 367. P-Fenton large Wild Strawberry compote w/ lid, contemporary
 368. Deep A-Fenton Paneled Daisy compote w/ lid, contemporary
 369. Red Amberina Smith Glass 10 1/2" banana shape bowl, contemporary
 370. Red-Imperial 474 vase, marked IG
 371. Red-Imperial Acanthus Leaf ftd covered candy dish, marked IG
 372. Red-Heavy Pineapple round compote, contemporary
 373. B-Fenton Persian Medallion bonbon, four sides up
 374. B-Imp Open Rose 9" round, flared bowl
 375. Amber-Imp Open Rose 6 3/4" deep, round bowl
 376. M-N Grape and Cable PCE bowl
 377. A-N Fine Cut and Roses candy dish
 378. W-N Fine Cut and Roses candy dish, Fancy interior
 379. P-N Leaf and Beads rosebowl
 380. G-Mibg Mayan 8" ICS bowl
 381. Pastel PO-Dugan Roundup 9", ten ruffle bowl
 382. Yellow-Dugan Apple Blossom 7 1/2" bowl
 383. PO-Dugan Single Flower Framed 7 1/2", CRE bowl
 384. G-Fenton Pepper Plant 6" hat, very nice
 385. B-Fenton Holly compote
 386. A-Fenton Peacock Tail 6" tri-corner plate
 387. G-N Lustre Flute hat
 388. G-Imp Grape wine decanter, no stopper
 389. Crystal iridized 10" bud vase
 390. MMG-Imperial Lead Luster 10' vase
 391. PO-Dugan Spiralex 10 1/4" vase
 392. PO-Dugan Pulled Loops 9 3/4" vase
 393. Pastel M-interior panel 11 1/2" bud vase
 394. M-#251 12" bud vase
 395. G-N Thin Rib Vt. 8" vase
 396. M-Imperial Mini Morning Glory 5 3/4" vase, 4 3/4" opening
 397. P-N Rainbow compote, BW exterior
 398. G-N Rainbow compote, smooth exterior
 399. A-Fenton Stippled Rays 9" bowl, large crack
 400. M-Fenton Stippled Rays 9", 3 in 1 bowl
 401. Assortment of carnival glass books-sold choice.

👉 Call Today To Sell Your Fine Items

660-882-5292 Day

660-882-5283 Evening



CARNIVAL GLASS

OPEN TO PUBLIC NO

Saturday October 6, 2007

Friday Preview: October 5, Noon - 5:00 PM

Public Auction for Betty

Go to the web site

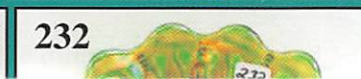
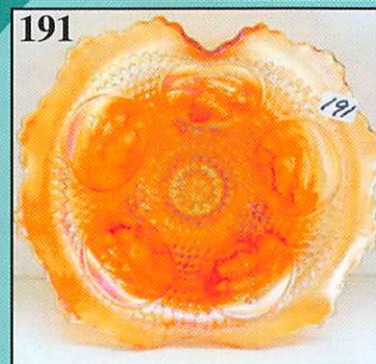
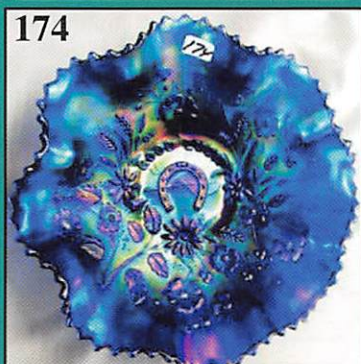
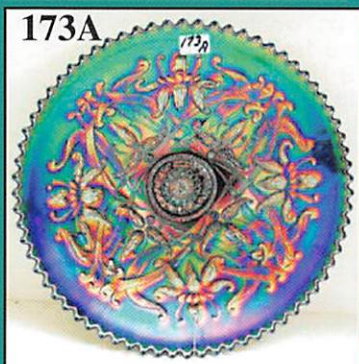
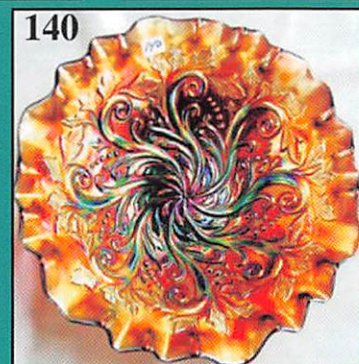
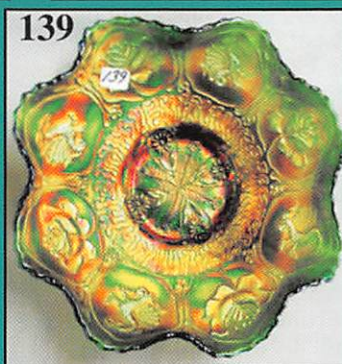
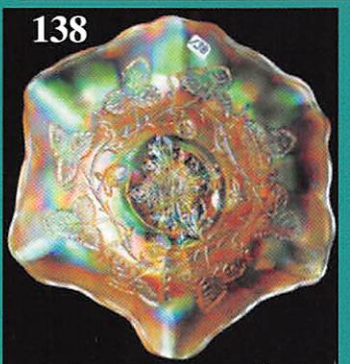
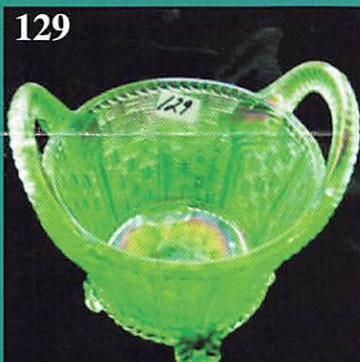
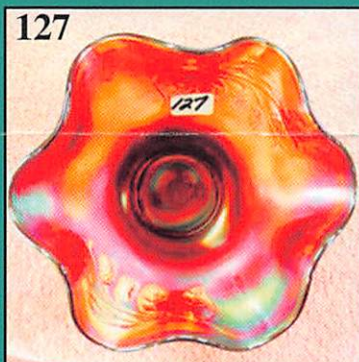
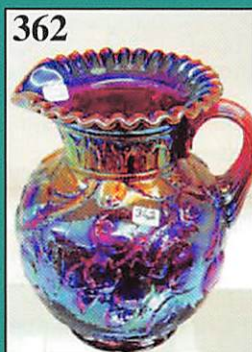
www.awk.com

Held @ the Mickey Reichel Auction Gallery

Smoke Free • Climate Controlled

1 Mile N. of I-70 on Hwy 5 Exit 101, Boone, MO

Auction Zip ID: 64601



ASS AUCTION

BUYERS PREMIUM

2012 @ 9:00 AM CDT

5:00 PM & 7:30 AM Auction Day

Richardson Estate Etal

for photo tour

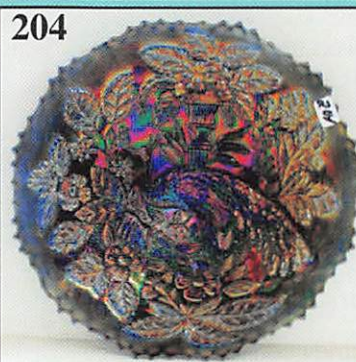
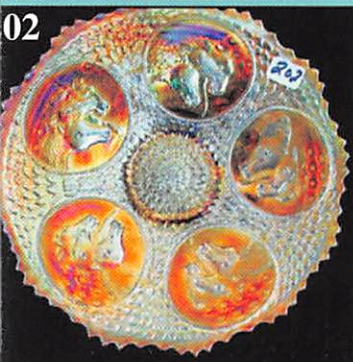
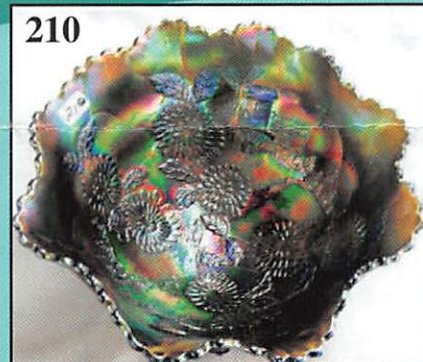
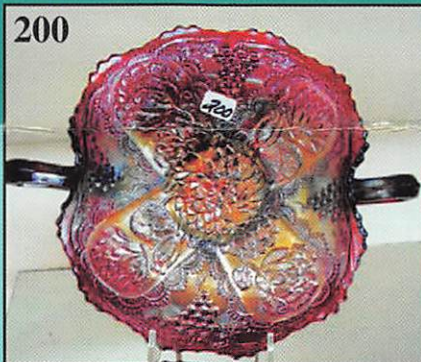
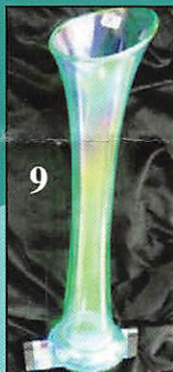
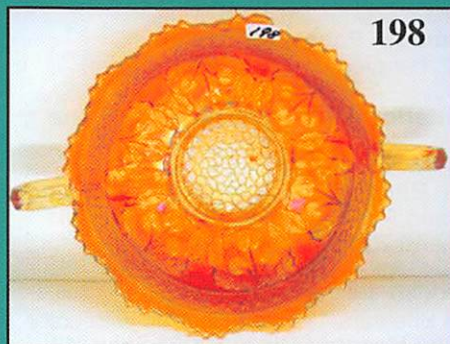
[richardson-estate.com](http://www.richardson-estate.com)

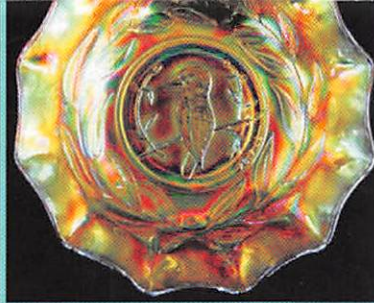
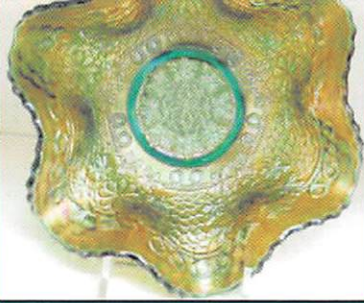
1440 Ashley Rd. • Boonville, Missouri

33 Years in the Same Location

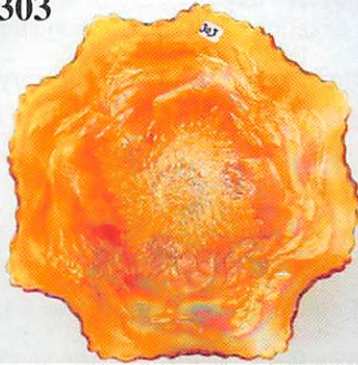
Boonville, MO 20 Miles W. of Columbia, MO

Phone Number 2175

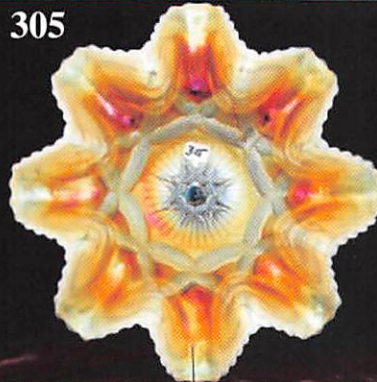




303



305



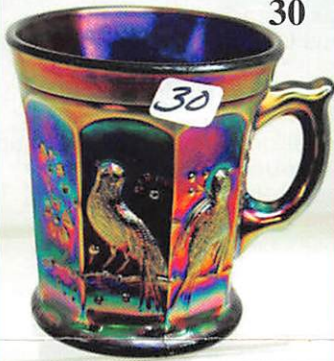
310



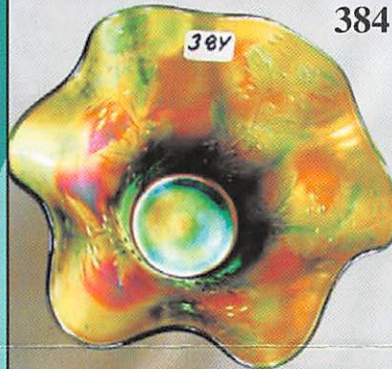
311



30



384



5



77



108



100



110



252



253



26, 27 28

26

27

28

Make Reservations EARLY at one of these local motels:

Days Inn: 660-882-8624

Comfort Inn: 660-882-5317

Super 8: 660-882-2900

Holiday Inn: 660-882-6882

Mickey Reichel Auction Center

1 Mile North of I-70 on Hwy. 5, Exit 101, Boonville, Missouri, 20 Miles West of Columbia, MO on I-70

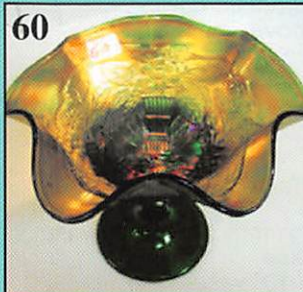


TERMS: Cash or Good Check, VISA and MasterCard accepted.



5% Clerking Fee on all purchases except for payment of cash or check.

Proper I.D. required.



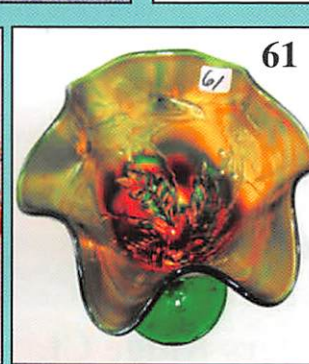
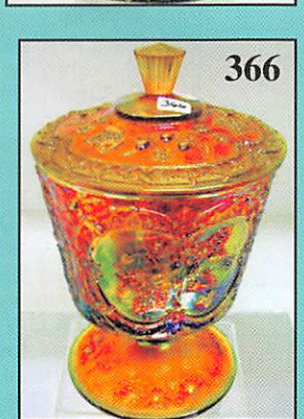
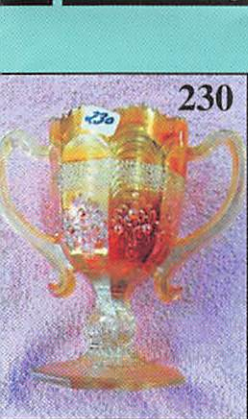
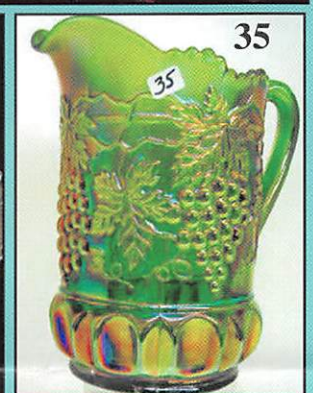
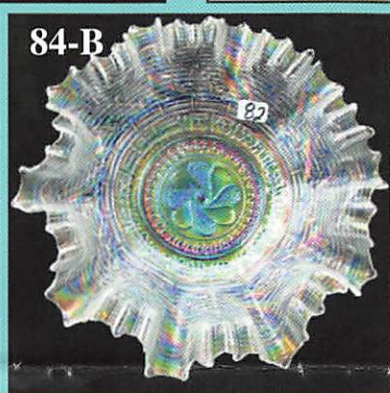
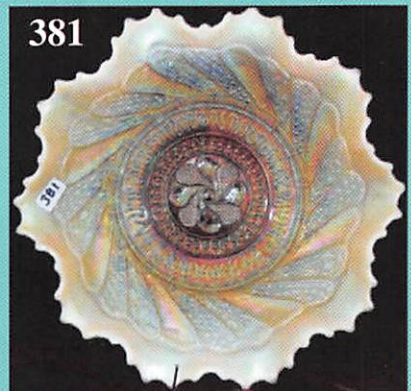
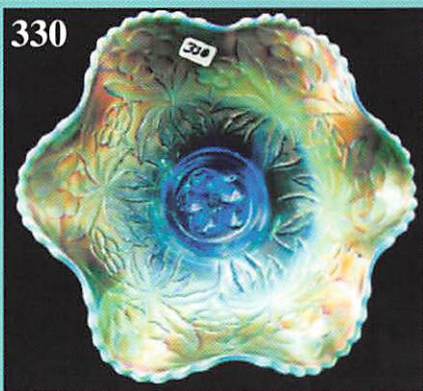
60



312



*** No return on any items once t
(No Exce



★★ ★ NO BUYERS PREMIUM ★★ ★
 ABSENTEE BID POLICY:
 PLEASE NOTE: There is a \$6 handling charge for each successful bid which will be added to the selling price for all write-in bids. This is in addition to the cost of postage, insurance and packing. Your write-in bid will be entered just as if you are present and bidding. Successful bidders will be notified in 1 to 3 days by the auctioneer (so be sure to include your phone number). Direct mail bids to Auctioneer Mickey Reichel, 18350 Hunters Ridge Ct., Boonville, MO 65233-2971. Terms: Cash or Check accepted with proper I.D. and Social Security Number and References. Announcements made day of the auction supercede all printed material. Not Responsible for Accidents or Sold Items. Call in Bids before Auction Welcome!
 ← Call for additional information: 660-882-5292 days or 660-882-5283 evenings before 9:00 p.m.
 FAX: 660-882-5292
 (evening hours start FAX transmission after beep)
 E-mail: mreichel@AWK-SHN.com
 Web Site: www.awk-shn.com

they leave the Auction Center * * *
 (options)

SEE REVERSE FOR DETAILS