

- _____ 1. M-Dugan Stork in Rushes with Lattice Band tumblers, 4 times \$
- _____ 2. **BA-Dugan Fisherman's mug, extra nice**
- _____ 3. B-Dugan Beaded Stork in Rushes tumblers, 3 times \$
- _____ 4. **M-Imp Buttermilk goblets, 4 times \$**
- _____ 5. M-Imp Octagon tumblers, 6 times \$
- _____ 6. **Grape and Cable tumblers, 6 times \$ (4 purple, 2 green)**
- _____ 7. B-Enameled Cherries tumbler
- _____ 8. **M-Imp Fashion tumbler**
- _____ 9. Pumpkin M-Fenton Water Lily and Cattails tumbler
- _____ 10. **M-Imp 474 tumbler**
- _____ 11. B-Lattice and Grape tumbler, very pretty
- _____ 12. **P-Imp Tiger Lily tumbler, scarce**
- _____ 13. B-Fenton Paneled Dandelion tumbler
- _____ 14. **M-Fenton Blackberry Block tumbler**
- _____ 15. Smoke-Imp Star Medallion milk pitcher, a beauty
- _____ 16. **Super Nice M-Imp Poinsettia milk pitcher**
- _____ 17. M-Tree Bark 5 pc water set
- _____ 18. **M-Vineyard 7 pc water set, well matched**
- _____ 19. M-Imp Octagon 7 pc water set
- _____ 20. **M-Lattice and Grape 7 pc water set, nicely matched**
- _____ 21. G-N Singing Birds 5 pc water set
- _____ 22. **Dark M-Imp Fashion 7 pc water set**
- _____ 23. Teal G-Imp Fieldflower water pitcher, glows!
- _____ 24. **M-Imp Fieldflower water pitcher, as nice as you want**
- _____ 25. Great M-Fenton Butterfly and Berry water pitcher, loaded with color
- _____ 26. **M-Fenton Butterfly and Berry tumbler**
- _____ 27. RARE Pearlized Custard-N Grape and Gothic Arches water pitcher
- _____ 28. **Rare-Pearlized Custard-N Grape and Gothic Arches tumbler, chip on base**
- _____ 29. P-N Grape and Cable sherbets, 3 times \$
- _____ 30. **M-N Grape and Cable sherbet**
- _____ 31. P-N Grape and Cable round, small berry bowls
- _____ 32. **G-N Grape and Cable master berry bowl, nice color**
- _____ 33. G-N Grape and Cable small berry bowls, 2 times \$
- _____ 34. **P-N Rainbow compote (no pattern)**
- _____ 35. P-N Rainbow compote, this one has BW exterior
- _____ 36. **M-N Fine Cut and Roses bowl, flakes on foot, but colorful**
- _____ 37. G-N Smooth Rays 8" bowl
- _____ 38. **P-N Strawberry 8 1/2" bowl, smooth back**
- _____ 39. P-N Grape and Cable 6" berry bowl
- _____ 40. **G-N Wild Rose footed bowl**
- _____ 41. P-N Grape Leaves 9" bowl
- _____ 42. **P-N Stippled Rays PCE bowl**
- _____ 43. P-N Stippled Rays (in center) 9" bowl
- _____ 44. **M-N Fruits and Flowers stemmed bonbon**
- _____ 45. P-N Stippled Rays (in center) 8" bowl
- _____ 46. **G-N Beads 8" ten-ruffle bowl, base chip**
- _____ 47. P-N Butterfly bonbon
- _____ 48. **M-N Blossom and Palm 8 3/4" bowl**
- _____ 49. G-N Lustre Flute 6 1/4" 2 sides up bonbon
- _____ 50. **P-N Smooth Rays bonbon**
- _____ 51. P-N Smooth Rays 6" bowl, surprisingly pretty
- _____ 52. **G-Imp Ripple 11 1/4" vase**
- _____ 53. M-Imp Ripple 11 3/4" vase
- _____ 54. **M-Imp Ripple 10" vase**
- _____ 55. M-Imp Ripple 10" vase
- _____ 56. **M-Imp Ripple 9 3/4" vase**
- _____ 57. M-Imp Ripple 8 3/4" vase
- _____ 58. **G-Imp Ripple 7" vase, base glows**
- _____ 59. M-Imp Ripple 7 1/2" vase
- _____ 60. **P-Imp Morning Glory 13" funeral vase, huge 9" opening, 5" starred base**
- _____ 61. P-Imp Morning Glory 13 1/4" funeral vase, vast 9 3/4" opening, collapsed bubble on top rim--so what? Buy the pair!!
- _____ 62. **M-Imp Mini Morning Glory 7" vase, dark and rich**
- _____ 63. M-Imp Mini Morning Glory 7 1/2" vase
- _____ 64. **M-Imp Morning Glory 9 1/2" JIP vase, great color**
- _____ 65. M-Imp Curled Rib 8" JIP vase, also pretty
- _____ 66. **Great M-Imp Beaded Bullseye 8 1/4" vase, large 6 3/4" opening**
- _____ 67. M-Imp Parlor Panels 11 1/2" vase
- _____ 68. **Superb M-Imp Smooth Panels 11 1/2" vase**
- _____ 69. M-Interior Panels 9 1/2" vase
- _____ 70. **B-Fenton Butterfly and Berry 9 1/2" vase**
- _____ 71. M-Fenton Butterfly and Berry 8" vase
- _____ 72. **PO-Dugan Pulled Loops 11" vase, lots of opal**
- _____ 73. M-Dugan Pulled Loops 11 1/2" vase
- _____ 74. **M-Fenton Boggy Bayou 12 1/2" tall, unusually tall**
- _____ 75. M-Fenton Boggy Bayou 6" squatty vase
- _____ 76. **M-Rustic Vt. 17 1/4" vase, dandy**
- _____ 77. M-Fenton Rustic 9" vase with CRE top
- _____ 78. **Pretty B-Fenton April Showers 13" vase**
- _____ 79. M-Imp Morning Glory 9 1/4" vase
- _____ 80. **P-Fenton #916 16 3/4" vase, very nice color**
- _____ 81. PO-Dugan Fishscale and Beads 7" banana shape bowl
- _____ 82. **M-Dugan Vintage 9" ICS bowl**
- _____ 83. PO-Dugan Caroline 8" CRE bowl, Smooth Rays interior
- _____ 84. **M-Dugan Cosmos Vt. 9 1/2" bowl**
- _____ 85. M-Dugan Double Stem Rose 8 1/2", ten ruffle bowl
- _____ 86. **P-Dugan Question Mark stemmed bonbon**
- _____ 87. M-Dugan Windflower 8 1/2" bowl
- _____ 88. **B-Dugan Double Stem Rose 8" ICS bowl**
- _____ 89. M-Dugan Beaded Basket
- _____ 90. **PO-Dugan Ski Star 11" deep ruffled bowl**
- _____ 91. M-Dugan Cosmos Vt. 9 1/2" bowl
- _____ 92. **A-Dugan Windflower 8 1/2", ten ruffle bowl**
- _____ 93. M-Dugan Apple Blossom 5 1/2" nut bowl, scarce and pretty
- _____ 94. **M-Dugan Puzzle stemmed bonbon, Floral and Wheat exterior**
- _____ 95. P-Dugan Six Petals 7 3/4" bowl
- _____ 96. **P-Dugan Cherries 8 1/2", ten ruffle bowl**
- _____ 97. Yellow-Westmoreland Pearly Dots 8 3/4" bowl
- _____ 98. **A-Westmoreland Pearly Dots 8 1/2" shallow, widely flared bowl**
- _____ 99. M-N Blossom and Palm 8 1/2" bowl
- _____ 100. **M-N Fine Cut and Roses 6 3/4" bowl, good feet**
- _____ 101. G-N Beaded Cable 7 1/2" bowl, Smooth Rays interior
- _____ 102. **G-N Petals 7 1/2" compote**
- _____ 103. Lav-N Stippled Rays 8" bowl
- _____ 104. **M-N Stippled Rays 9 3/4" bowl, BW exterior, nice one**
- _____ 105. M-Imp Grape 7" round bowl
- _____ 106. **M-Imp Lustre Rose 11" centerpiece bowl**
- _____ 107. M-Imp Grape 10" round, flared bowl
- _____ 108. **M-Imp Fashion 8 pc punch set**
- _____ 109. M-Imp Twins fruit bowl and base
- _____ 110. **M-Diamond Pinwheel 11" bowl**
- _____ 111. M-Imp Star and File 8" square bowl
- _____ 112. **Dark M-Wide Panel 6" rosebowl**
- _____ 113. G-Wide Panel 9" bowl
- _____ 114. **Smoke-Imp Diamond Ring 9 1/4" bowl**
- _____ 115. M-Imp Grape 9" bowl
- _____ 116. **M-Imp Lustre Rose 10" round fruit bowl**
- _____ 117. M-Imp Lustre Rose 11" centerpiece bowl
- _____ 118. **M-Imp Long Hobstar 10 1/4" fruit bowl**
- _____ 119. M-Imp Heavy Grape 9" bowl
- _____ 120. **M-Imp Octagon 11" bowl, unusually large**
- _____ 121. M-Imp Grape 10" round, flared bowls, choice A or B
- _____ 122. **M-Imp Grape 9" bowl, pumpkin**

123. M-Imp Octagon 9" round, scalloped edge bowl
124. **M-Curved Star/Headdress 9" bowl**
125. M-Imp Twins 6" bowl, super nice
126. **M-Imp Star and File 7" compote**
127. M-Imp Pansy nappy
128. **M-Imp Lustre Rose fernery**
129. Amber-Imp Pansy relish dish
130. **G-Imp Pansy 9" bowl, good color for a green one**
131. M-Imp Pansy 9" bowl
132. **P-Imp Scroll Embossed 8" bowl**
133. M-Imp Scroll Embossed 7 1/2" round bowl
134. **M-Westmoreland Pillow and Sunburst 8" round bowl**
135. M-Sowerby Pineapple creamer
136. **G-Fenton Diamond and Rib 9 3/4" vase**
137. G-Fenton Diamond and Rib 7 3/4" vase
138. **M-Fenton Diamond and Rib 7 1/2" vase**
139. M-Fenton Long Thumbprint 10 1/2" vase
140. **A-Fenton Long Thumbprint 7" vase**
141. M-Fenton Long Thumbprint 9 3/4" vase
142. **B-Fenton Fine Rib 10" vase**
143. P-N Fine Rib 10 1/4" vase, pretty
144. **M-Fenton Fine Rib 9 3/4" vase**
145. B-Fenton Fine Rib 8 3/4" vase
146. **G-N Fine Rib 9 1/2" vase, starred base**
147. M-Fenton Diamond Point Columns 11" vase
148. **G-N Tree Trunk Vt. 9 3/4" vase**
149. P-N Tree Trunk 9 3/4" vase, color top to bottom
150. **P-N Thin Rib 10" vase**
151. M-N Thin Rib 9 1/2" vase
152. **M-N Fine Rib 10 1/2" vase, fine color**
153. G-N Fine Rib 10" vase
154. **P-N Fine Rib 10" vase**
155. M-N Fine Rib 7 1/2" squatty vase
156. **G-N Feathers 11 1/4" vase**
157. G-N Thin Rib 7 1/2" vase
158. **A-Fenton Peacock Tail ruffled compote**
159. M-Florentine 8 1/2" candlesticks, pair
160. **Russet-N Thin Rib 10" vase**
161. W-Dugan Puzzle banana shape stemmed bonbon, Floral and Wheat exterior
162. **Outstanding B-Dugan Roundup 9" plate**
163. PO-Dugan Garden Path Vt. 9 3/4" bowl, Soda Gold exterior, opal center treatment
164. **PO-Dugan Border Plants 9", ten ruffle, handpainted bowl**
165. Pumpkin M-N Wild Rose 8" bowl
166. **Red-Fenton 2-row O.E. 6" JIP hat, nice one**
167. Red-Fenton 2-row O.E. 5 1/2" ruffled hat
168. **Rich M-N Hearts and Flowers compote**
169. Excellent A-Fenton Concord 9" plate
170. **W-Fenton Flowers rosebowl, scarce item**
171. Pumpkin M-Fenton Orange Tree orange bowl
172. **Scarce G-Fenton Orange Tree orange bowl, lots of blue highlights**
173. M-Fenton Persian Medallion/Grape and Cable fruit bowl, sweet!
174. **M-Fenton Two Flowers 10 1/4", ICS, ball ftd bowl, unusual shape for pattern**
175. Great B-Fenton Butterfly and Berry 9 1/4" round bowl
176. **B-Sowerby Flora 8 1/2" float bowl**
177. M-Fenton Two Flowers 9" ICS, ball ftd bowl
178. **B-Fenton Orange Tree 9" bowl, Bearded Berry exterior**
179. M-Fenton Holly 8 1/4" ICS bowl
180. **Dark M-Fenton Holly 8 1/2" ICS bowl**
181. Deep A-Fenton Holly 9" bowl, almost appears red
182. **M-Fenton Dragon and Lotus 9" bowl, dark and nice**
183. M-Fenton Dragon and Lotus 9" bowl
184. **A-Fenton Peacock Tail 8" ICS bowl**
185. M-Fenton Peacock Tail 5 1/2" round, flared bowl
186. **A-Fenton Peacock Tail 7" bowl**
187. M-Fenton Holly 6 1/4" square hat
188. **B-Fenton Pepper Plant 6" square hat**
189. A-Fenton Pepper Plant 6" hat
190. **G-Fenton Pepper Plant 6" hat**
191. M-Fenton Blackberry Spray 5 3/4" hat
192. **B-Fenton Blackberry Banded 5 1/4" square hat**
193. B-Fenton Holly 6 1/4", 2 sides up hat
194. **B-Fenton Peacock at Urn compote, nice example**
195. M-Fenton Peacock at Urn compote, also quite lovely
196. **B-Fenton Holly compote**
197. M-Fenton Butterfly and Berry 4 3/4" round bowl
198. **M-Fenton Panther 5" round bowls, 2 times \$**
199. Rich M-Fenton Orange Tree stemmed sherbets, 2 times \$
200. **B-Fenton Orange Tree stemmed sherbet**
201. M-Fenton Orange Tree stemmed sherbets, 2 times \$
202. **Yellow Vas-Fenton Water Lily 6" footed bowl, scarce**
203. M-Fenton Cherry Chain 6" bowl
204. **M-Fenton Lotus and Grape 6" round, footed bowl**
205. M-Fenton Lotus and Grape bonbon, 4 sides up
206. **M-Fenton Pine Cone 7" bowl**
207. M-Fenton Pond Lily 2 sides up, 7 1/2" bonbon
208. **M-Fenton Butterfly and Berry spooner, creamer, covered sugar**
209. Smoke-Imp Diamond Ring 9" bowl
210. **Smoke-Imp Tulip and Cane 5 1/2" berry bowl**
211. M-Fenton Acorn 7 1/2" bowl
212. **Dark M-Fenton Grape and Cable 8" bowl**
213. M-Fenton Iris compote
214. **B-Fenton Wreath of Roses cup/Pine Cone saucer, Persian Medallion interior on cup**
215. B-Fenton Sailboats 6" bowl
216. **M-Brockwitz May basket**
217. M-Fenton Two Flowers 8", spat ftd. bowl
218. **G-Fenton Coin Dot 7" round bowl**
219. G-Fenton Coin Dot 9 1/2" bowl
220. **M-Fenton Mikado 9 3/4" round compote, color top to bottom**
221. G-Mlbg Holly Whirl 9 3/4" bowl, satin finish
222. **P-Mlbg Rays and Ribbons 9 1/2" bowl**
223. G-Mlbg Rays and Ribbons 10", 3 in 1 bowl
224. **G-Mlbg Holly Whirl 2 sides up bonbon**
225. G-Fenton Stippled Rays bonbon, 4 sides up
226. **M-Fenton Illusion card tray shape bonbon, pretty**
227. M-Fenton Butterfly 2 sides up bonbon, very nice
228. **G-Fenton Butterfly bonbon, 4 sides up**
229. M-Fenton Blackberry Spray 6 1/4" JIP, CRE hat
230. **Teal-Westmoreland Louisa 8" round, footed bowl**
231. A-Westmoreland Pillow and Sunburst 8" bowl
232. **M-Westmoreland Louisa 7" candy dish w/ lid**
233. G-Westmoreland Louisa rosebowl
234. **A-Westmoreland Corinth 9", 2 sides up banana shape bowl**
235. P-Strutting Peacocks creamer and sugar
236. **A-Fenton Heart and Vine 8" CRE bowl**
237. G-Fenton Heart and Vine 8 3/4" ruffled bowl
238. **B-Fenton Heart and Vine 9" bowl**
239. M-Fenton Vintage 7" bowl
240. **A-Fenton Thistle 7 3/4", CRE bowl, super pretty**
241. M-Fenton Vintage 9" bowl
242. **A-Fenton Vintage 8 1/2", 3 in 1 bowl**
243. B-Fenton Peacock at Urn 8", ICS bowl, great blues and greens
244. **M-Fenton Peacock and Grape 8", ICS, spat ftd. bowl**

- _____ 245. B-Fenton Captive Rose 8", 3 in 1 bowl
_____ 246. G-Imp Shell and Sand 8" bowl, scarce color
and pretty for green
_____ 247. M-Imp Heavy Grape 8" plate
_____ 248. Smoke-Imp Hattie 8 1/2", round, flared bowl-
lusc iridescence
_____ 249. M-Fenton Vintage fernery
_____ 250. B-Fenton Cherry Chain 10" bowl
_____ 251. Dark M-Fenton Acorn 7 1/2" bowl
_____ 252. B-Fenton Stag and Holly 7 1/2", spat ftd.
bowl
_____ 253. M-Fenton Stag and Holly 7 1/2", spat ftd. bowl
_____ 254. A-Fenton Peacock and Grape 9" bowl
_____ 255. M-N Grape and Gothic Arches sugar w/ lid
_____ 256. G-Fenton Thistle 9" bowl
_____ 257. M-Dugan Pony bowl
_____ 258. G-N Sunflower 8" ftd. bowl
_____ 259. Lav-N Sunflower 8 7/8" bowl
_____ 260. G-N Three Fruits Medallion 9", spat ftd. bowl
_____ 261. P-N Grape and Cable sweetmeat compote w/
lid
_____ 262. P-N Grape and Cable sweetmeat lid
_____ 263. Dark M-N Peacock at Fountain sugar w/ lid
_____ 264. A-N Wild Strawberry 10" bowl, excellent iridescence

- _____ 265. G-N Fine Cut and Roses rosebowl, great color
and good feet
_____ 266. P-N Three Fruits 9" plate, smooth exterior
_____ 267. M-N Stippled Three Fruits 9" plate, Rib exterior
_____ 268. Electric B-N Good Luck bowl, Rib exterior, a
KEEPER!
_____ 269. P-N Good Luck bowl, Rib exterior
_____ 270. Pastel M-N Good Luck bowl
_____ 271. BA-Nautilus creamer, signed Northwood in
script
_____ 272. A-N 8-sided Bushel basket, collector favorite
_____ 273. Ice B-N Hearts and Flowers bowl, pretty pastels
_____ 274. Rich M-N Dandelion mug
_____ 275. AO-N Dandelion mug, lots of opal, great interior
_____ 276. G-N stippled Grape and Cable Vt. 9" plate
_____ 277. Awesome M-N Rose Show 9 1/2" plate, top
shelf item
_____ 278. P-Imp Grape 6 1/2" plate, colorful
_____ 279. G-Imp Loganberry vase, mkd IG
_____ 280. Pink-Imp Loganberry vase, mkd IG
_____ 281. W-Imp Grape milk pitcher, mkd IG
_____ 282. G-Imp Grape milk pitcher, mkd IG
_____ 283. Smoke-Imp Grape milk pitcher, mkd IG
_____ 284. Awesome Smoke-Imp Windmill water pitcher, mkd IG

SPECIAL NOTE:

NO SUNDAY CALLS, PLEASE!

Winning Absentee Bidders will be contacted Monday through Wednesday of the week following the Auction!

Thank You!

SEND ALL MAIL TO:

18350 Hunters Ridge Ct.

Boonville, MO 65233

WATCH:  **Web Site: www.AWK-SHN.com**

285. Dark Smoke-Imp Windmill water pitcher, mkd IG
 286. M w/ frosted panels-Imp Windmill 7 pc water set, mkd IG
 287. Dark Smoke-Imp 474 7 pc water set, mkd IG
 288. Deep M-Imp Lustre Rose 7 pc water set, mkd IG
 289. Red-HOACGA 1976 7 pc whiskey set
 290. Electric B-Robin 7 pc water set, mkd IG
 291. Deep Smoke-Imp Lustre Rose 7 pc water set, mkd IG
 292. Red-Imp Fieldflower 7 pc water set, mkd IG
 293. M-Imp Grape 7 pc water set, mkd IG
 294. W-Dahlia 7 pc water set, contemporary
 295. Pink-Imp Tiger Lily 7 pc water set, mkd LIG
 296. W-Imp Robin 7 pc water set, mkd IG
 297. Ice B-Imp Robin water pitcher, mkd LIG
 298. Dark M-Imp 474 water pitcher, mkd IG
 299. Red-Imp Fieldflower 7 pc water set, mkd IG
 300. M-Imp Grape 7 pc water set, mkd IG
 301. Celeste B-Fenton Diamond Optic 7 pc tankard water set
 302. Dark Smoke-Imp 474 water pitcher, mkd IG
 303. G-Imp Grape water pitcher, mkd IG
 304. M-Imp Hobstar cracker jar, mkd IG
 305. M-Imp Hobstar cracker jar, mkd IG
 306. Smoke-Imp Octagon large compote, mkd IG
 307. Elec B-Boysenberry 6" vase, mkd IG
 308. Elec B-Boysenberry 6" vase, mkd IG
 309. Smoke-Imp Pansy nappy, mkd IG
 310. Smoke-Imp Pansy nappy, mkd IG
 311. Emerald G-Imp lion-footed breakfast creamer & sugar, SC inside, mkd IG
 312. Smoke-Imp Daisy 10" handled basket, mkd IG
 313. Smoke-Imp Lustre Rose creamer and sugar w/ lid, mkd IG
 314. Smoke-Imp Lustre Rose butter dish w/ lid, mkd IG
 315. Elec B-Imp Windmill 9 1/2" plate, mkd IG
 316. M-Imp paper label "Beaded Ovals" butter dish w/ lid, mkd IG, see photo
 317. Red-Imp 474 7" compote, mkd IG
 318. Smoke-Imp Fancy Flowers 8 1/2" pedestal compote, mkd IG
 319. Smoke-Imp Octagon 10" bowl, mkd IG
 320. B-Imp Iris and Floral 9" console bowl, mkd IG
 321. B-Imp Iris and Floral candlesticks, pair, mkd IG
 322. Smoke-Imp Octagon 10" round, scalloped bowl, mkd IG
 323. Red-Imp Fieldflower 6" bulbous vase, mkd IG
 324. B-Imp Octagon 5" stemmed compote, mkd IG
 325. M-Imp Grape tumbler, mkd IG
 326. M-La Bella Rose 6" bulbous vase, mkd IG
 327. G-Imp Grape 4 3/4" round bowl, mkd IG
 328. B-Three Swans toothpick holder, suspect it is St. Clair
 329. Smoke-Imp Grape goblets, 5 times \$, mkd IG
 330. Smoke-Imp Lustre Rose 8", 3 in 1 bowl, mkd IG
 331. M-Imp Lustre Rose 8". 3 in 1 bowl, mkd IG
 332. Smoke-Imp Lustre Rose 8", 3 in1 bowl, mkd IG
 333. Smoke-Imp Lustre Rose 8", 3 in 1 bowl, mkd IG
 334. Smoke-Imp Lustre Rose 8", 3 in1 bowl, mkd IG
 335. Yellow-Imp Lustre Rose 8", 3 in 1 bowl, mkd ALIG
 336. M-Imp Octagon toothpick holder, mkd IG
 337. M-Imp Octagon toothpick holder, mkd IG
 338. W-Imp Lustre Rose fernery bowl, mkd IG
 339. G-Imp Grape 8 3/4" round bowl, mkd IG
 340. Rich M-Imp Windmill 8", 3 in 1 bowl, mkd IG
 341. M-Imp Curved Star 7 1/2" covered compote, mkd IG

342. Pink-Imp Hobstar 6 3/4" bowl, mkd ALIG
 343. Red-Imp 474 6 3/4" vase, mkd IG
 344. M-Imp Octagon 6" pedestal vase, mkd IG
 345. M-Imp Scroll and Flower 9 1/2" vase, 7 1/2" opening, mkd IG
 346. M-Imp Scroll and Flower 9 1/2" vase, 7 1/2" opening, mkd IG
 347. M-Imp Fancy Flower 8 1/2" pedestal base compote, mkd IG
 348. M-Imp 474 7" compote, mkd IG
 349. Red Amberina-Indiana Glass butter dish w/ lid
 350. Red-Indiana Glass Octagon 4 1/2" tall jardiniere
 351. Red-Fenton Heavy Grape 6" round bowl, mkd Fenton
 352. Red-Indiana Glass Octagon 8" bowl
 353. B-Inverted Fan and Feather tumblers, 4 times \$
 354. B-Imp Ivy and Vine breakfast creamer and sugar, mkd IG, S & C inside
 355. P-Fenton Paneled Daisy covered compote, mkd Fenton
 356. P-Fenton Persian Medallion 8" bowl, mkd Fenton
 357. P-Fenton 2 row O.E. basket, mkd Fenton
 358. P-Fenton 1970 Glassblower plate, 1st in Craftsmen series
 359. P-Fenton Leaf Tiers 4 1/2" berry dish, mkd Fenton
 360. Red-Fenton Grape and Cable cracker jar w/ lid, mkd Fenton
 361. P-Fenton Persian Medallion 7 1/2" bowl, mkd Fenton
 362. AO-Fenton Drapery 12 1/2" footed vase, mkd Fenton
 363. Red Amberina-stretched Hobstar 12" footed vase, contemporary
 364. P-stretched Hobstar 11" footed vase, contemporary
 365. P-Fenton Drapery 11 1/2" footed vase, mkd Fenton
 366. Red-Smith Glass Windmill 8" bowl, contemporary
 367. Red-contemporary Whirling Star 7 1/2" round bowl
 368. W-contemporary Whirling Star 7 1/2" round bowl
 369. Red-Octagon 12" platter, contemporary
 370. Red Amberina-Octagon 10" bowl, contemporary
 371. Red-Octagon creamer and sugar, contemporary
 372. Reverse Amberina-Octagon butter dish w/ lid, contemporary
 373. Reverse Amberina-Octagon butter dish w/ lid, contemporary

The auction continues with 29 boxes of carnival glass with 4 or 5 pieces in every box. Great buying opportunity for dealers. Variety of carnival and other glass reference books, sold choice--20+ books. The auction concludes with two giant boxes of plate holders.....literally hundreds.

Call Today To Sell Your Fine Items
 660-882-5292 Day
 660-882-5283 Evening

CARNIVAL GLASS LIVE

OPEN TO PUBLIC NOW

Saturday April 14, 2012

Preview date Friday - April 13, 12:00 Noon

600 Plus Pieces From Eldon

Do Not miss this Huge Event, Something for Everyone

Go to the web site

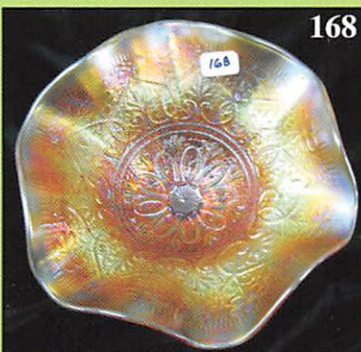
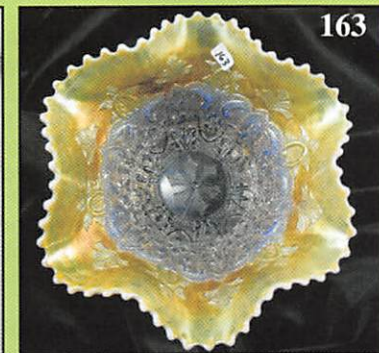
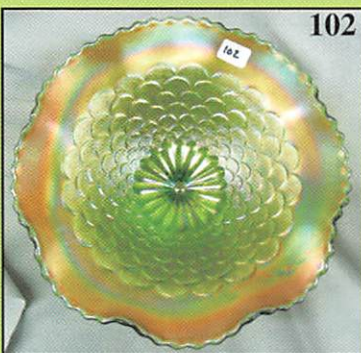
www.awk.com

Held @ the Mickey Reichel Auction Gallery

Smoke Free • Climate Controlled

1 Mile N. of I -70 on Hwy 5 Exit 101, Boone, MO

Auction Zip ID 64601



ING ESTATE AUCTION

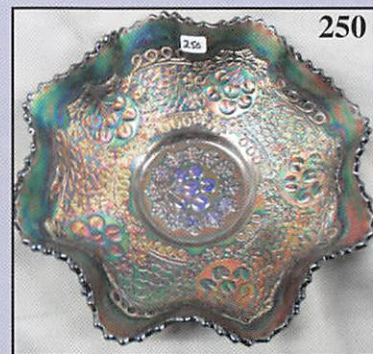
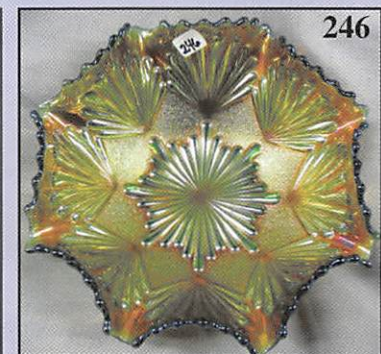
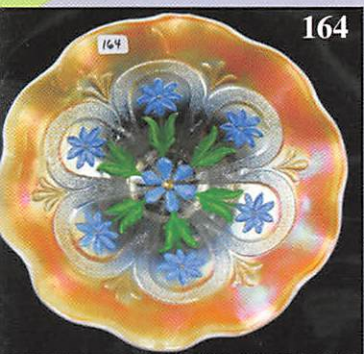
D BUYERS PREMIUM

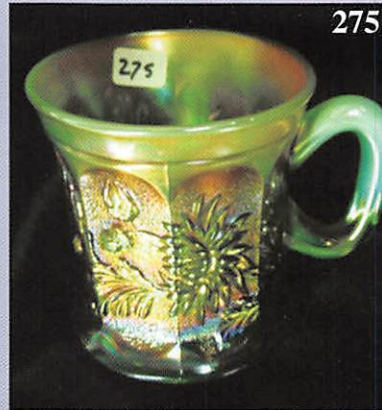
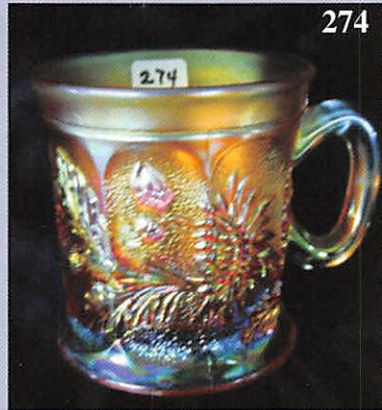
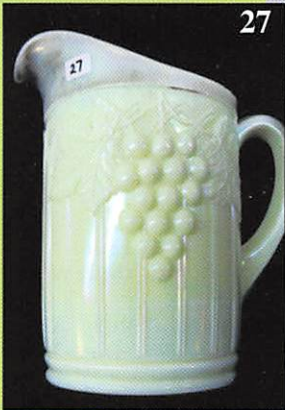
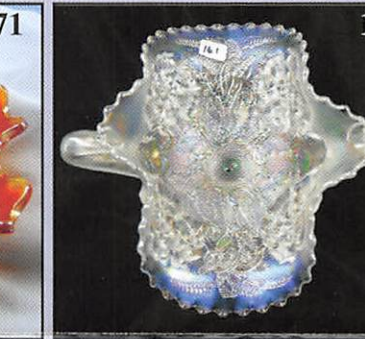
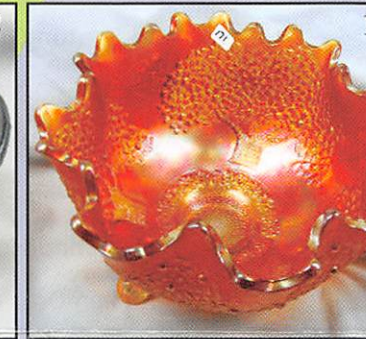
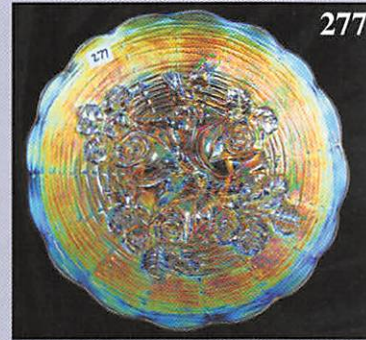
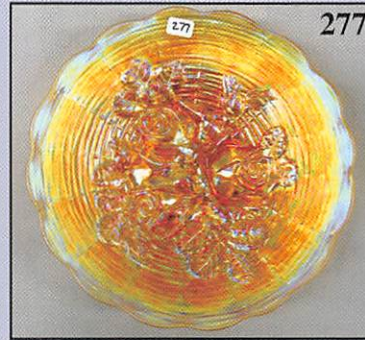
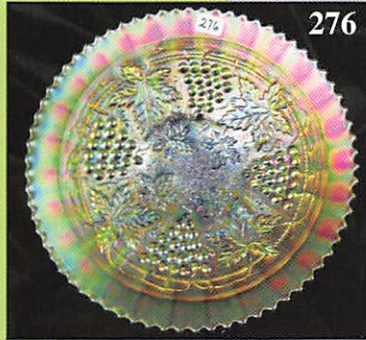
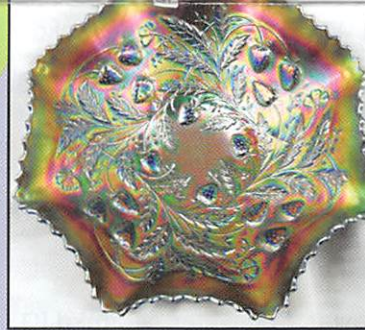
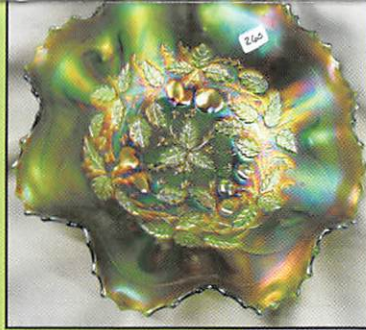
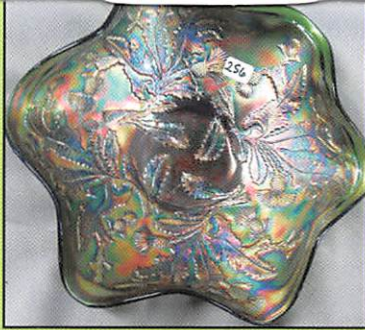
012 @ 9:00 AM CDT

on - 5:00 PM 7:30 AM Auction Morning

McCullough, of Oklahoma
one, For Beginners, Season Collectors and Dealers
 e for photo tour
-shn.com

ry • 1440 Ashley Rd. • Boonville, Missouri
 • 33 Years in the Same Location
 nville, MO 20 Miles W. of Columbia, MO
 Number 2175





Make Reservations **EARLY** at one of these local motels:

- Days Inn: 660-882-8624
- Comfort Inn: 660-882-5317
- Super 8: 660-882-2900
- Holiday Inn: 660-882-6882

Mickey Reichel Auction Center

1 Mile North of I-70 on Hwy. 5, Exit 101, Boonville, Missouri, 20 Miles West of Columbia, MO on I-70



TERMS: Cash or Good Check, VISA and MasterCard accepted.

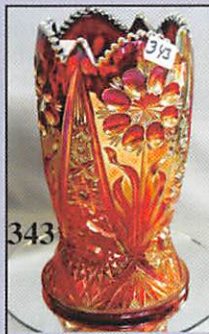
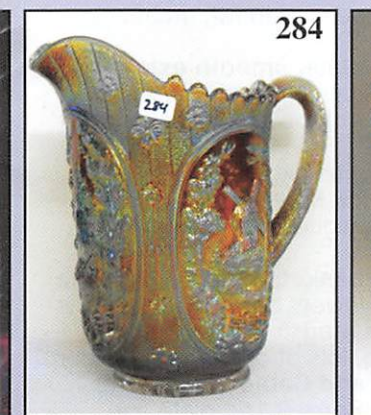
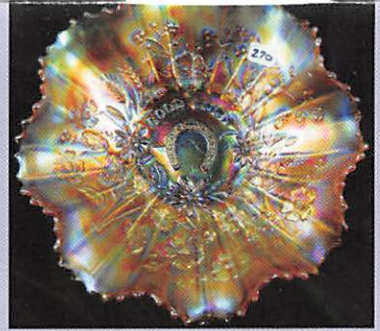


5% Clerking Fee on all purchases except for payment of cash or check.

Proper I.D. required.



***** No return on any items once sold (No Exceptions) *****



★★★NO BUYERS PREMIUM★★★

ABSENTEE BID POLICY:

PLEASE NOTE: There is a \$6 handling charge for each successful bid which will be added to the selling price for all write-in bids. This is in addition to the cost of postage, insurance and packing. Your write-in bid will be entered just as if you are present and bidding. Successful bidders will be notified in 1 to 3 days by the auctioneer (so be sure to include your phone number). Direct mail bids to Auctioneer Mickey Reichel, 18350 Hunters Ridge Ct., Boonville, MO 65233-2971. Terms: Cash or Check accepted with proper I.D. and Social Security Number and References. Announcements made day of the auction supercede all printed material. Not Responsible for Accidents or Sold Items. Call in Bids before Auction Welcome!

Call for additional information: 660-882-5292 days or 660-882-5283 evenings before 9:00 p.m.

FAX: 660-882-5292

(evening hours start FAX transmission after beep)

E-mail: mreichel@AWK-SHN.com

Web Site: www.awk-shn.com

they leave the Auction Center * * *
(options)

SEE REVERSE FOR DETAILS