

1. M-Curtain Time 7" vase, 5 1/2" opening
2. **M-Franklin Fruit 2" tall, widely flared vase, with flower frog**
3. M-Wide Interior Panels 7 1/4" vases, two for the price of one!
4. **M-Enamel Daisy Spray 8" bulbous vase**
5. P-N Thin Rib 10" vase, super
6. **B-N Thin Rib 7 1/2" squatly vase, scarce color**
7. G-N Thin Rib 10 1/2" vase
8. **Ice G-N Thin Rib 11 1/4" vase, difficult color to find**
9. W-N Thin Rib 7" squatly vase
10. **G-N Tree Trunk 9 3/4" vase**
11. B-N Tree Trunk 10 3/4" vase
12. **M-N Tree Trunk 8 3/4" vase, fine pastels**
13. P-Dugan Pulled Loop 10" vase
14. **G-Dugan Pulled Loop 10 3/4" vase, rare color**
15. M-Dugan Pulled Loop 11 3/4" vase
16. **Rare B-Dugan Pulled Loop 10" vase**
17. PO-Dugan Pulled Loop 9 1/4" vase
18. **M-Fenton Long Thumbprint 10 1/4" vase**
19. P-N Thin Rib 9 1/2" vase
20. **M-N Drapery Vt. 8 3/4" vase**
21. Dark M-N Drapery 7 1/2" vase, nice!
22. **Ice G-N Drapery 8 1/2" vase**
23. AO-N Daisy and Drape 6 1/4" vase, flared top
24. **M-N Daisy and Drape 6 1/4" vase, turned in top**
25. W-Fenton Diamond and Rib 9 1/2" vase, scarce color
26. **Green Vaseline-Woodpecker vases, 2 x \$**
27. M-Summer Day 6" vase
28. **M-Dugan Big Basketweave 4" squatly vase**
29. M-Fine Cut Rings 7 1/2" stemmed celery vase
30. **PO-Dugan Wide Rib 5 1/2" spitoon-top vase**
31. Super M-Imp Octagon 8" vase
32. **M-Tree Bark Vt. 7 1/2" candle vase**
33. M-N Flute 10 1/2" mid-size vase
34. **G-Imp Loganberry vase**
35. Smoke-Imp Scroll and Flower Panel vase, scarce, small top rim chip
36. **Smoke-Imp Smooth Panels 9 3/4" funeral vase, 4 1/2" base, beautiful!**
37. BA-Aussie Lily 9" mid-size vase, 4 1/2" base, unusual
38. **Electric P-Imp Ripple 11 3/4" vase**
39. Smoke-Imp Ripple 11 3/4" vase, sweet
40. **G-Imp Ripple 11 1/4" vase**
41. Aqua-Imp Ripple 11" vase, a beauty
42. **Pastel Smoke-Imp Ripple 9" vase**
43. M-Imp Ripple 9" vase, swung out so much the ripples are gone!
44. **G-Imp Ripple 9" vase**
45. Amber-Imp Ripple 6 3/4" squatly vase, dark and lovely
46. **Amber-Imp Ripple 11" vase, dark w/ neat spout**
47. M-Imp Three Row 7 1/2" tall, interior fracture
48. **M-Cambridge Buzz Saw 5" cruet w/ stopper**
49. M-Cambridge Buzz Saw cruet, no stopper
50. **M-Milady covered powder dish**
51. Red Amberina-Daisy Cut bell, not iridized
52. **M-Daisy Cut bell**
53. PO-Westmoreland Estate creamer and sugar
54. **Smoke-Woodsland 5 1/4" miniature vase**
55. Smoke-Westmoreland Estate 5" mini vase, mkd. "El Dorado, Springs, Mo"
56. **M-7" tall handled basket w/ sunflower design**
57. M-Tree of Life 6" mini handled basket
58. **M-Westmoreland #1700 5" mini handled basket**
59. M-Basketweave 5 3/4" mini handled basket
60. **P-Imp Octagon shaker, very rare!**
61. M-Diamond Point Spiral 5 3/4" mini vase
62. **M-Imp Colonial 5 1/2" stemmed mini vase**
63. M-Heisey Colonial 6" vase, mkd. "1903 Hale Bath House, Hot Springs, Ark."
64. **Electric P-Imp Flute toothpick holder**
65. M-N Flute nut bowl, compote shaped
66. **M-Maypole 6" stick vase**
67. Tangerine Stretch-Fenton #318 2 3/4" tall single candlestick
68. **M-Beaded Teardrop 4" mini vase**
69. M-Vase 3 1/2" vase, finely ribbed, black enamel rim, polished pontil
70. **G-Imp Mini Morning Glory 4 3/4" vase, short and scarce**
71. M-Miniature Hobnail 8" cruet with stopper
72. **M-Etched Deco (or Trudy) 3 3/4" widely flared, rolled rim vase**
73. Fantastic P-Imp Grape 11" ruffled bowl, stunning electric piece
74. **P-Imp Cobblestone ruffled bowl, radium silver finish**
75. Teal G-Imp Open Rose rosebowl, glows
76. **Rich Amber-Imp Open Rose rosebowl**
77. Super M-Imp Star and File rosebowl
78. **Rare Smoke-Imp Diamond Ring 6" rosebowl, fabulous**
79. G-Imp Plain Jane 5 pc. berry set, extremely scarce color
80. **Stunning Clambroth-Imp Fashion 9 1/4" ICS bowl**
81. Clambroth-Imp Crabclaw 9" ICS bowl, radium pastel
82. **M-Imp Hobstar and Arches 9" ICS bowl, tough pattern**
83. M-Imp Three in One 8 3/4" ICS bowl, super pretty
84. **Smoke-Imp Three in One 9" ruffled bowl**
85. Dark M-Imp Diamond Lace 8 1/2" round, scalloped bowl, very pretty
86. **Scarce G-Imp Diamond Lace 8 1/2" round, scalloped bowl**
87. G-Imp Diamond Lace 5" ruffled bowl, super pretty and scarce
88. **M-Imp Oval and Round 11" chop plate**
89. Amber-Imp Heavy Grape 11 1/4" chop plate
90. **M-Imp 474 goblet**
91. M-Imp Octagon goblet
92. **Electric P-Imp Zippered Heart 7 pc. berry set, absolutely awesome**
93. P-Imp Broken Arches punch bowl base, a dandy
94. **Teal G-Imp Grape wine glasses, 2 x \$**
95. Lime G-Imp Grape wine glass
96. **Olive G-Imp Grape wine glasses, 3 x \$**
97. M-Imp Octagon wine glasses, 3 x \$
98. **M-Imp Diamond and Sunburst wine glass**
99. M-Dugan Golden Harvest wine glasses, 3 x \$
100. **P-Fenton Birds and Cherries 9 3/4", 3 in 1 bowl, rare and lovely**
101. Clambroth-Imp Acanthus 10 1/4" chop plate
102. **Radium M-Imp 474 large ruffled compote**
103. M-Imp Scroll Embossed large compote, Curved Star exterior
104. **M-Imp Pillar Flute 8 1/2" water pitcher**
105. M-Imp Flute and Cane 5 3/4" milk pitcher
106. **Smoke-Imp Daisy 9 3/4" handled basket**
107. Smoke-Imp Grape 10" handled basket
108. **M-Imp Basket pattern 8 3/4" tall handled basket, scarce**
109. Aqua-Imp Waffle Block 9 3/4" handled basket, base chip
110. **M-May pattern round, handled basket, rim roughness**
111. M-Diamond Prisms 8" banana shape handled basket, gorgeous
112. **Dark unusual blue-"Diamond Star" (?) 7" square, handled basket, European?**
113. PO-Dugan Single Flower 6 1/4" handled basket, banana shape
114. **M-Etched Cane and Daisy 10" vase**
115. Pink-Etched Cut Flower 10" cylinder vase, not iridized
116. **M-Diamond and Daisy Cut 10" flared vase**
117. M-Jenkins Cut Flower 10" cylinder vase
118. **B-Fenton Bullseye and Beads 14 1/2" vase, unusual**
119. M-Fenton Bullseye and Beads 14 1/2" vase
120. **Dark M-Sunflower and Diamond 9" vase**
121. M-4 1/4" "flower frog vase", really different!
122. **M-Dugan Circle Scroll 7" vase, scarce color in this pattern**
123. Lav-N Diamond Point 9" vase, square top
124. **Ice B-N Diamond Point 10 1/2" vase, six flutes**
125. G-N Diamond Point 10 1/2" vase, twelve flutes, square top
126. **G-Fenton Butterfly and Berry 9 1/2" vase, not often seen in green**
127. M-Fenton Butterfly and Berry 9 1/4" vase
128. **B-Fenton Butterfly and Berry 8" vase**
129. M-Fenton Butterfly and Berry 6 1/2" vase, tightly crimped top
130. **Yellow Amber-Fenton Butterfly and Berry 8 1/4" vase**
131. M-Fenton Flute 9" vase
132. **B-Fenton Flute 10" vase, rib interior**
133. Odd Dark B-Fenton Flute 9" vase
134. **G-Fenton Flute 10 1/4" vase**
135. Ice G-Fenton Panels 11 1/2" vase
136. **G-Fenton Panels 11 1/2" vase**
137. Citrine-N Four Pillars 10 1/2" vase
138. **B-N Four Pillars 10 1/2" vase, tough color**
139. Dark P-N Four Pillars 11 1/2" vase
140. **AO-N Four Pillars 10 1/2" vase, excellent iridescence**
141. P-Mlbg? Four Pillars 11" vase, starred base
142. **G-Mlbg? Four Pillars 11 1/2" vase, starred base**

143. P-Westmoreland Concave Flute 7" vase
144. **Aqua-Westmoreland Concave Flute 9 1/4" vase**
145. M-Diamond Flute 5" vase, with wide, rolled 9 1/4" wide rim
146. **M-Florentine Hat 6" vase, with wide, rolled 8" wide rim**
147. PO-Dugan Thin Panel 5" vase, with tri-corner, CRE top
148. **Electric P-Imp Thin Rib and Drape 5 1/2" vase**
149. Dark M-Imp Thin Rib and Drape 5 1/2" vase
150. **G-Imp Thin Rib and Drape 4 3/4" vase**
151. Radium M-Imp Columbia 5 1/4" ruffled vase
152. **M-Imp Columbia 9" plate, radium and nice**
153. M-Fenton Panther 5" round berry bowl, loaded with blues
154. **Ice B-N Peacock at Fountain 5 1/4" round berry bowl**
155. W-Fenton Orange Tree 4 1/4" footed sherbets, scarce color, 2 x \$
156. **P-N Peacock at Fountain 7 pc berry set, well-matched and wonderful**
157. P-N Smooth Rays bonbon, four sides up
158. **P-N Wishbone 8 1/2" footed, ruffled bowl**
159. G-N Three Fruits 8 1/2" plate
160. **P-N Grape and Cable tankard water pitcher**
160A. M-N Grape and Gothic Arches water pitcher
160B. **G-N Grape and Cable 7 pc water set**
160C. P-N Raspberry 5 pc water set
160D. **P-N Wild Strawberry 10" ruffled bowl, lush purples and blues, plain exterior**
161. G-N Oriental Poppy 5 pc water set, scarce
162. **M-Hobstar Band water pitcher**
163. M-Hobstar Band tumbler
164. **P-Fenton Butterfly and Fern 7 pc water set**
165. M-Enameled Freesia tankard water pitcher
166. **A-Fenton Fluffy Peacock 7 pc water set**
167. M-Enameled Periwinkle bulbous water pitcher
168. **M-Illinois Daisy cookie jar w/ lid**
169. M-Scroll Embossed compote, Curved Star exterior
170. **G-Imp Grape cup and saucer**
171. M-Fenton Stippled Rays 6" plate
172. **PO-Dugan Flowers and Beads 7 1/4" plate**
173. M-Fenton Water Lily and Cattails 5 3/4" plate
174. **G-Fenton Feathered Serpent 5 3/4" tri-corner plate**
175. P-Peacock at Urn 5 1/2" ICS bowl
176. **P-N Fruits and Flowers 7 1/4" ruffled bowl**
177. P-N Fruits and Flowers 9 1/2" bowl
178. **B-Fenton Two Fruits divided bonbon**
179. G-N Daisy and Plume ftd bowl, Raspberry interior
180. **G-Cambridge Inverted Thistle 7" ruffled bowl, marked Near Cut**
181. P-N Grape and Cable 8 3/4" plate
182. **M-N Strawberry 9" plate**
183. P-N Three Fruits Medallion spat ftd. bowl
184. **G-N Grape and Cable 11" ruffled bowl**
185. P-N Peacock at Urn 5 1/2" bowl
186. **Ice B-N Drapery 7" tri-corner bowl**
187. M-N Three Fruits 9" ruffled bowl
188. **Horehound-N Three Fruits 8 3/4" ruffled bowl, super nice and scarce**
189. M-N stippled Strawberry ruffled bowl
190. **M-Dugan Beaded Panels compote, nice pastels**
191. Dark M-Imp Curled Rib 7 1/2" JIP vase, pumpkin
192. **G-N Leaf Columns 5 1/2" squatty vase**
193. Rich M-Diamond Block 6" vase
194. **Rich M-Imp Star Medallion 6" stemmed vase**
195. M-Imp Rococo 4 1/2" vase, color top to bottom
196. **Smoke-Imp Rococo 4 1/2" vase, sweet**
197. M-Imp Ripple 4 3/4" vase, a dandy little piece
198. **P-Imp Ripple 6" vase, great color**
199. M-Diamond Hobstar and Cane 8 3/4" footed vase
200. **P-Westmoreland Keystone 6 3/4" JIP vase**
201. M-Little Dixie 9" bud vase
202. **B-Fenton Ribs and Rings 5 1/2" ruffled vase**
203. M-Heavy Prism Panels 6" footed vase
204. **Dark Smoke-Imp Frosted Block 6" vase, seldom offered for sale**
205. M-Fenton Peacock Tail 7 1/2" ICS bowl
206. **PO-Dugan Apple Blossom Twigs 9", low ruffled bowl**
207. PO-Dugan Holly and Berry spade shape nappy
208. **A-Dugan Fanciful 7 3/4" ICS bowl**
209. M-Dugan Constellation ruffled compote
210. **M-Dugan Question Marks ruffled compote, Georgia Belle exterior, Puzzle base**
211. PO-Dugan Fishnet ruffled epergne
212. **M-Dugan Five Hearts 7 1/2" bowl, scarce pattern**
213. M-Dugan Weeping Cherries 9" ruffled bowl
214. **Sapphire-Dugan Beaded Basket two handled basket, very scarce color**
215. Sapphire-Dugan Big Basketweave 10" vase, epoxy on base
216. **Scarce Horehound-Dugan Lined Lattice 8 1/2" vase, not often seen**
217. M-Dugan Big Basketweave 9 3/4" vase
218. **Splendid M-Dugan Lined Lattice 9" vase**
219. P-Dugan Lined Lattice 9" vase, colors galore
220. **W-Dugan Lined Lattice 11" vase, pretty pastels**
221. BA-Dugan Lined Lattice 10 1/4" vase, electric hues
222. **BA-Dugan Lined Lattice 13 3/8" vase, super tall and actually has "feet"**
223. M-Fenton Blackberry Open Edge 6 1/2" ruffled basket
224. **Sapphire-Fenton Blackberry Open Edge 6" ruffled basket**
225. B-Fenton Blackberry Open Edge 6 1/4", 2 sides up basket
226. **A-Fenton Blackberry Open Edge 6" ruffled basket**
227. B-Fenton 2 row Open Edge 6", 2 sides up basket, beautiful
228. **PO-Westmoreland 5 3/4" shell dish, tough one**
229. M-Westmoreland 5 3/4" shell dish
230. **Teal-Westmoreland 5 3/4" shell dish**
231. P-Westmoreland 4" shell dish
232. **B-Fenton Vintage 5" epergne**
233. M-Fenton Blackberry Spray 6 1/2" square hat, heavily iridized
234. **Amber-Fenton Holly 6" JIP hat, crimped edge**
235. M-Fenton Grape and Cable 9" spat ftd. plate
236. **A-Fenton Three Fruits 9" plate**
237. Scarce M-Fenton Concord 9 1/2" plate, a prize piece!
238. **M-Fenton Peacock at Urn ruffled bowl**
239. G-Fenton Holly 8 1/2" ICS bowl, emerald highlights
240. **Pale, Pale Coke bottle green-Fenton Stag and Holly 11 1/4" ICS bowl**
241. B-Fenton Vintage 9 3/4" ruffled bowl
242. **B-Fenton Orange Tree 9 1/2" plate**
243. B-Fenton Captive Rose 9 1/4" plate
244. **B-Fenton Holly 9 3/4" plate**
245. W-Fenton Flowers rosebowl, loads of pastel yellows inside
246. **W-Cosmos and Cane 4 pc table set, superb color on all pieces**
247. BA-Dugan Grape Delight rosebowl, electric hues
248. **PO-Dugan Folding Fan 6 1/2" ruffled, crimped edge compote**
249. Purple-Dugan Target 7" vase, not iridized, but a cool vase
250. **Electric P-Dugan 7 1/4" squatty vase w/ 6 3/4" top, splendid!**
251. PO-Dugan Target 5 1/2" squatty vase
252. **B-Dugan Target 11" vase, scarce color**
253. M-Dugan Target 12" vase, nice
254. **P-Dugan Target 11 3/4" vase, another tough color**
255. PO-Dugan Target 11 1/4" vase
256. **W-Dugan Target 11 1/4" vase, extra pretty**
257. M-Dugan Lattice and Points 8 1/4" vase, daisy in base
258. **W-Dugan Lattice and Points 8 1/4" vase, daisy in base**
259. P-Dugan Lattice and Points 7 3/4" vase, no daisy
260. **Scarce Lav-Dugan Lattice and Points 8 3/4" vase, daisy in base**
261. Rare B-Dugan Lattice and Points 7 1/2" vase, daisy in base
262. **P-Dugan Lattice and Points 3 1/2" squatty vase, daisy in base, scarce size**
263. M-Dugan Lattice and Points 2 1/4" hat, whimsied from vase, 7" across top
264. **W-Dugan Big Basketweave 10 3/4" vase**
265. M-Dugan Big Basketweave 9 1/4" vase
266. **Scarce B-Dugan Big Basketweave 9" vase**
267. Deep P-Dugan Big Basketweave 10 1/4" vase
268. **Scarce G-Fenton Paneled Diamonds and Bows 9 1/4" vase**
269. M-Fenton Paneled Diamonds and Bows 7" vase
270. **A-Fenton Paneled Diamonds and Bows 8 1/4" vase**
271. B-Fenton Paneled Diamonds and Bows 7 1/2" vase
272. **Rare Lime Vas-Fenton Paneled Diamonds and Bows 8 3/4" vase, what a find!**
273. G-Fenton Plume Panels 11" vase
274. **B-Fenton Plume Panels 12 1/4" vase, excellent color**
275. A-Fenton Plume Panels 11 1/2" vase
276. **Rare Vaseline-Fenton Plume Panels 10 1/2" vase**

- _____ 277. Vas-Fenton Flute 8 ¾" vase
- _____ 278. Vas-Fenton Ribs and Rings JIP vase
- _____ 279. Vas-Fenton Fine Rib 9 ¾" vase
- _____ 280. Yellow Vas-Fenton Fine Rib 16 ¾" vase
- _____ 281. Yellow Vas-Fenton Fine Rib 11 ½" vase
- _____ 282. Red-Fenton Fine Rib 10 ½" vase, collector favorite
- _____ 283. Red-Fenton Flute 9 ¼" vase, very scarce
- _____ 284. Red-Dugan Royal Lustre 8" single candlestick
- _____ 285. Red-Dugan Royal Lustre 10" console bowl
- _____ 286. Red-Fenton Holly 9" ruffled bowl
- _____ 287. Blood Red-Fenton Holly 9" ruffled bowl, so dark!
- _____ 288. Red-Fenton Blackberry Spray 6" ruffled hat
- _____ 289. Red Amberina-Fenton Blackberry Spray 6 ¾" JIP, CRE hat
- _____ 290. Red Slag-Fenton Blackberry Open Edge 6" ruffled bowl
- _____ 291. Red-Fenton Blackberry Open Edge 6 ¼" ruffled bowl
- _____ 292. Cherry Red-Fenton Orange Tree mug
- _____ 293. Red-Fenton Orange Tree shaving mug, spectacular example
- _____ 294. Brick Red-Fenton Orange Tree flared shaving mug
- _____ 295. Blue-Fenton Orange Tree shaving mug
- _____ 296. B-N Singing Birds mug, beautiful interior
- _____ 297. P-N Singing Birds mug
- _____ 298. P-N Dandelion mug
- _____ 299. Pumpkin M-N 8-sided Bushel basket, hot pinks

- _____ 300. B-N Diamond Point basket, very scarce pattern
- _____ 301. P-N Singing Birds 4 ¾" berry bowl, round
- _____ 302. P-N Singing Birds creamer and sugar
- _____ 303. P-N Peacock at Fountain spooner, delightful color
- _____ 304. P-N Peacock at Urn 10" master ICS bowl
- _____ 305. P-N stippled Strawberry ruffled bowl
- _____ 306. Renninger B-N stippled Strawberry 9" ruffled bowl, rainbow of colors
- _____ 307. Stupendous Electric B-N stippled Strawberry 8 ¼" ruffled bowl
- _____ 308. A-N Raspberry gravy boat
- _____ 309. Ice B-N Nippon PCE bowl, lots of blues
- _____ 310. M-N Wishbone epergne, highly desirable
- _____ 311. G-N Fine Cut and Roses ruffled bowl, very pretty
- _____ 312. Ice G-N Fine Cut and Roses ruffled bowl, Fancy interior
- _____ 313. Scarce Horehound-N Fine Cut and Roses ruffled bowl
- _____ 314. AO-N Fine Cut and Roses rosebowl, Fancy interior, feet polished
- _____ 315. Ice B-N Fine Cut and Roses rosebowl, Fancy interior, one small nick on foot
- _____ 316. P-N Fine Cut and Roses rosebowl
- _____ 317. AO-N Leaf and Beads rosebowl, chip on foot
- _____ 318. AO-N Drapery rosebowl
- _____ 319. AO-N Beaded Cable rosebowl
- _____ 320. Electric B-N Beaded Cable rosebowl, wowzer, bowzer!

SPECIAL NOTE:

NO SUNDAY CALLS, PLEASE!

Winning Absentee Bidders will be contacted Monday through Wednesday of the week following the Auction!

Thank You!

SEND ALL MAIL TO:

18350 Hunters Ridge Ct.

Boonville, MO 65233

WATCH:  **Web Site: www.AWK-SHN.com**

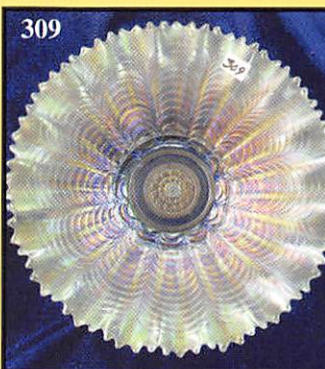
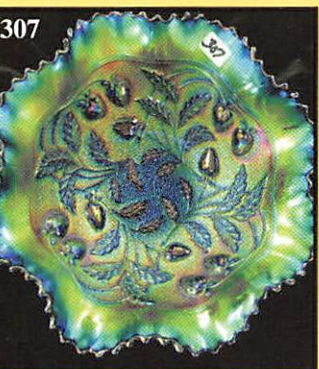
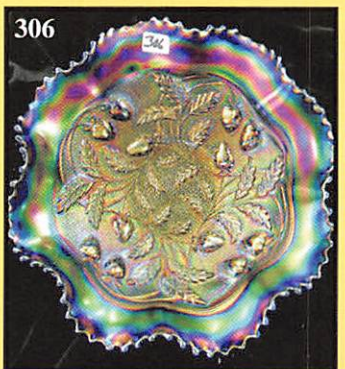
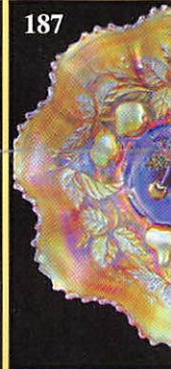
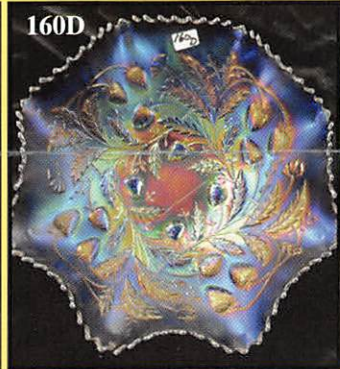
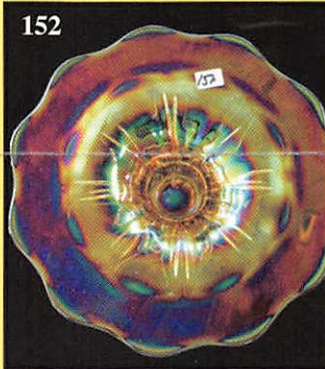
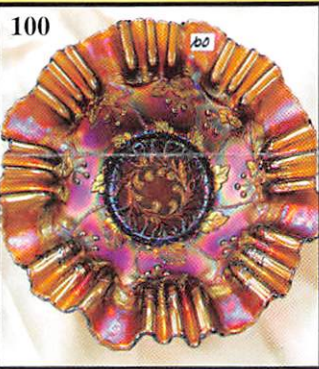
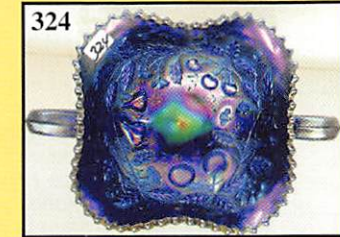
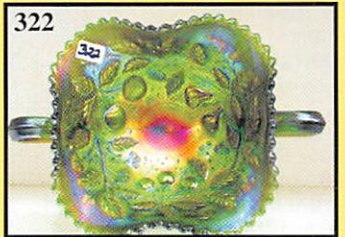
321. Super Pastel AO-N Fruits and Flowers bonbon
322. G-N Fruits and Flowers bonbon, super pretty
 323. M-N Fruits and Flowers bonbon
324. Electric B-N Fruits and Flowers bonbon
 325. P-N Fruits and Flowers bonbon
326. Nice P-N Peacock at Fountain fruit bowl, interior fracture
 327. M-Mlbg Hobnail rosebowl
328. G-Mlbg Holly Whirl bonbon, 2 sides up
 329. Radium A-Mlbg Holly Spring card tray shape bonbon
330. M-Mlbg Blackberry Wreath 5 1/2" tri-corner bowl, great little item
 331. Radium M-Mlbg Strawberry Wreath ruffled compote, drenched in pinks and blues
332. P-Mlbg Leaf and Little Flowers compote
 333. Radium A-Mlbg Peacock Tail Vt. ruffled compote, killer color!
334. P-Mlbg Holly Sprig 7" round bowl, lots of blues and pinks
 335. A-Mlbg Blackberry Wreath 5 3/4" round bowl
336. M-Mlbg Poppy flared compote, chip on top rim
 337. KILLER M-Mlbg Nesting Swan 9 1/2" ruffled bowl, astonishing marigold example
338. Radium M-Mlbg Holly Sprig 9 1/2" ruffled bowl
 339. M-Mlbg Strawberry Wreath 9 1/4" round, flared bowl
340. M-Mlbg Peacock at Urn 10 1/2" ruffled bowl
 341. G-Mlbg Rays and Ribbons 9 1/2" crimped edge bowl, super example
342. A-Mlbg Grape Wreath Vt. 7 1/4", 3 in 1 edge bowl, Feathered Leaf center, radium beauty
 343. P-Mlbg Holly Sprig 9 1/2" ruffled bowl
344. G-Mlbg Rosalind Vt. ruffled compote, excellent color
 345. A-Mlbg Little Stars 8" ruffled bowl
346. P-Mlbg Primrose 10" ruffled bowl
 347. Very Scarce P-Mlbg Tulip Scroll 7 1/4" vase, exquisite radium color
348. G-Mlbg Swirled Hobnail 10" vase, a nice one
 349. M-N Tree Trunk 13" mid-size, plunger base vase
350. P-N Tree Trunk 12 1/2" mid-sized vase, multi electric
 351. P-Imp Morning Glory 16 1/2" funeral vase, 8" opening, chips on base
352. Scarce Smoke-Imp Gothic Arches 10" vase, 8" opening, a real great item
 353. P-N Thin Rib 14" mid-size funeral vase, electric top to bottom
354. G-N Thin Rib 12 1/2" mid-size funeral vase, flared top, quite colorful
 355. Pumpkin M-N Thin Rib 13" mid-size funeral vase, exceptional
356. Amber-Imp Lustre Rose 9 1/4" float bowl, so scarce, so lovely!
 357. Electric P-Imp Lustre Rose 9 1/4" float bowl, marie chip, but look at the color!!!!
358. Electric P-Imp Scroll Embossed 9" plate
 359. M-Imp Freefold 11 3/4" vase
360. Super Smoke-Imp Freefold 12" vase, pastels deluxe
 361. M-Imp Freefold 12" vase, has a nice spout and rich color
362. Electric P-Imp Freefold 12" vase, a winner!
 363. Pastel M-Imp Serrated Flute 8 1/2" vase
364. P-Imp Serrated Flute 12" vase, electric blues and purples
 365. Pastel M-Imp Serrated Flute 6 1/2" squatty vase, 5 1/2" opening
366. P-Imp Serrated Flute 7 3/4" vase, 6" opening, gorgeous!
 367. Smoke-Imp Parlor Panels 9" vase
368. Great M-Imp Parlor Panels 11" vase, what color!
 369. P-Imp Parlor Panels 13" vase, tough color
370. M Flash-Feathered and Plain Panel 8 1/2" vase
 371. Green Vas-Footed Drape 10" vase, glows wildly, not iridized
372. M-Footed Drape 11 3/4" vase
 373. Lt Marigold-Unknown pattern name (Thistle and Diamond?) 15 1/2" vase
374. Lt Marigold-Galloway 11 1/2" vase
 375. Lt Marigold-Unknown pattern name (Ladder?) 12 1/2" vase
376. Lt Marigold-Dugan Spiralex 13" vase, glass has a distinctive yellow hue
 377. PO-Dugan Wide Rib 9" vase

378. M-Dugan Spiralex 10" vase, dark and nice
 379. M-Imp Beaded Bullseye 10 1/2" vase
380. Green Vas-Imp Beaded Bullseye 8 1/4" vase, 5 1/2" opening, glows like crazy
 381. Helios G-Imp Beaded Bullseye 11 1/4" vase
382. Electric P-Imp Beaded Bullseye 7" squatty vase, 6 1/4" opening, super!
 383. Olive G-Imp Beaded Bullseye 5 1/4" squatty vase, 6" opening, scarce color and size
384. Lav Ice-Fenton Rustic 9 1/2" vase
 385. M-Fenton Rustic 15 1/2" vase, CRE top
386. P-Fenton Rustic 14" vase
 387. M-Imp Curled Rib 9" vase
388. BA-Moire Scarab hatpin
 389. BA-Dinner Ring hatpin
390. BA-hatpin with brass ormolu, first I've seen, check photos
 391. BA-hatpin with brass ormolu, same as the last one
392. Hatpin-unknown pattern, applied rooster, see photos
 393. M-HOACGA Good Luck hatpin, no shank
394. W-N Oriental Poppy tumblers, 5 x \$
 395. M-Fenton Coin Dot tumblers, 2 x \$
396. M-Fenton Ten Mums tumblers, 4 x \$
 397. G-N Grape and Cable tumbler, exceptional
398. P-N Grape and Cable tumbler, radium electric
 399. P-N Singing Birds tumblers, 2 x \$
400. B-Dugan Rambler Rose tumbler
 401. Amber-Fenton Strawberry bonbon
402. G-Fenton Strawberry bonbon
 403. M-Fenton Strawberry bonbon, berry in base
404. Red-1974 HOACGA 7 pc water set
 405. Red-1976 HOACGA 7 pc whiskey set
406. Red-1981 HOACGA candle lamp, complete
 407. Red-1991 HOACGA Peacock and Dahlia 6 1/2" plate
408. Pink Opal w Green trim-1986 HOACGA Good Luck bell
 409. M-1988 HOACGA Good Luck bell
410. Green Opal-1986 HOACGA Good Luck bell
 411. Sapphire-1989-HOACGA Good Luck bell
412. B-2000 HOACGA Pansy plate
 413. Vas Opal-Peacock Garden vase w/ cuspidor top, made by Fenton, not iridized
414. Sage Mist Opaque-Fenton Peacock Garden vase, signed 1991 NFGS, not iridized
 415. Red-1993 HOACGA Good Luck 6 1/2" plate
416. Red-1993 HOACGA Good Luck whimsid basket
 417. Red-1993 HOACGA Good Luck whimsey plate, 2 sides up, CRE
418. Red-ICGA 1982 Frolicking Bears cuspidor
 419. BA-1992 HOACGA Good Luck mug, table favor
420. Pink Slag-1991 HOACGA Good Luck mugs, choice A or B
 421. Lav-1999 HOACGA Orange Tree wines, 5 x \$
422. B-2000 HOACGA Orange Tree wines, 2 x \$
 423. Vas Opal-2001 HOACGA Orange Tree wine, turned in top
424. Vas Opal-2001 HOACGA Orange Tree wine, flared top
 425. W-1998 HOACGA Good Luck loving cups, 2 x \$
426. Ice G-1980 HOACGA Good Luck hatpin holder
 427. Vas Opal-2001 HOACGA Good Luck hatpin holders, 2 x \$
428. AO-1996 HOACGA tulip candleholders, 2 x \$
 429. AO-1991 HOACGA room display hobnail cuspidor
430. Lav-1999 HOACGA room display hobnail cuspidor
 431. Vas Opal-2001 HOACGA room display hobnail cuspidor
432. Red-Fenton Poppy Show vase made for Singleton Bailey
 433. Aqua-Fenton Poppy Show vase made for Singleton Bailey
434. Pink Burmese Poppy Show vase made for Singleton Bailey
 435. P-Smith Glass Octagon water pitcher

But that's not all folks! Space only allows us to list this far, but there are 110 more lots of carnival glass, crystal Millersburg and some contemporary carnival.

Those that stay the longest will benefit the most!!

Call Today To Sell Your Fine Items
660-882-5292 Day
660-882-5283 Evening



CARNIVAL GLASS

Saturday October 1

*Friday preview : October 14, 12:00 n

Held @ The Mickey Reichel Auction C

The Estate of Mr. E
Over 600 plus pieces in one day

www.awk

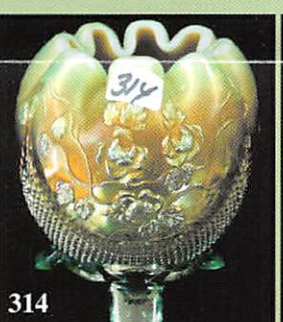
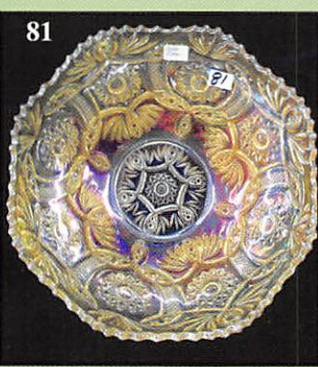
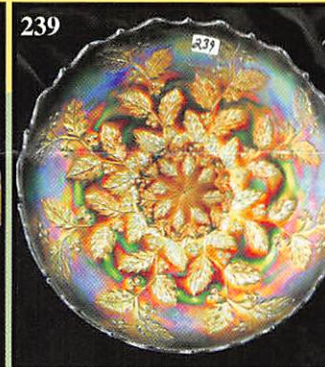
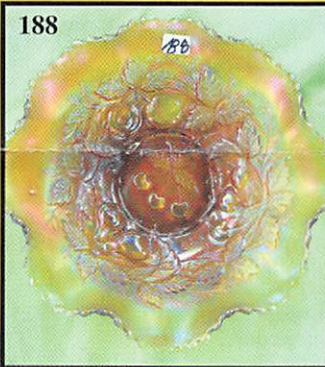
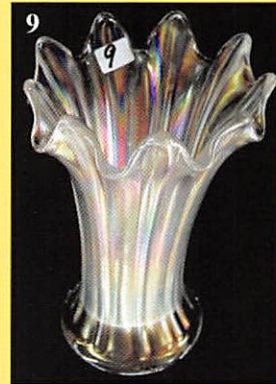
A large group of Miniature
Do Not miss
All One Persons Collection. Years of P

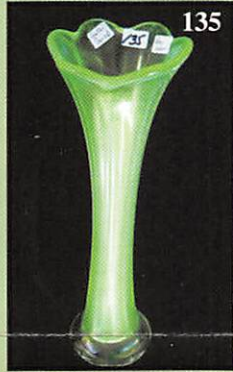
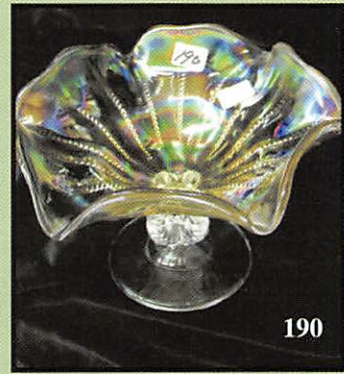
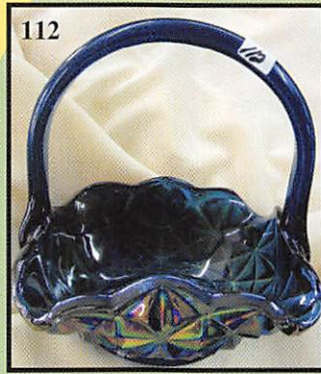
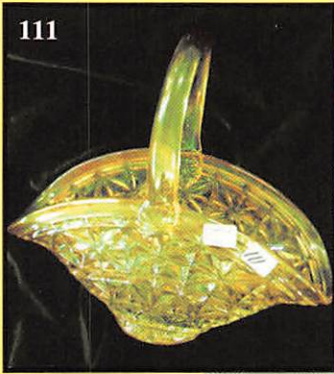
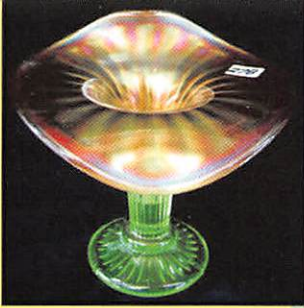
ESTATE AUCTION

5, 2011 @ 9:00 AM

noon - 5:00 pm & 7:30 am Auction Day
Gallery • 1440 Ashley Rd Boonville, MO

Eugene Cox of Kansas
- Go to web site for photo tour
www.eugenecox.com
cups, vases and unusual pieces.
Lunch and travel being offered at Auction





Make Reservations **EARLY** at one of these local motels:

Days Inn: 660-882-8624
Comfort Inn: 660-882-5317
Super 8: 660-882-2900
Holiday Inn: 660-882-6882

Mickey Reichel Auction Center

1 Mile North of I-70 on Hwy. 5, Exit 101, Boonville, Missouri, 20 Miles West of Columbia, MO on I-70

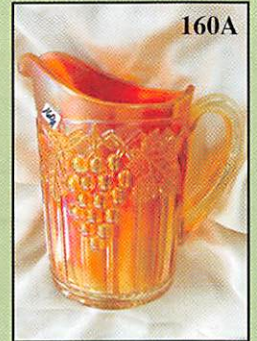
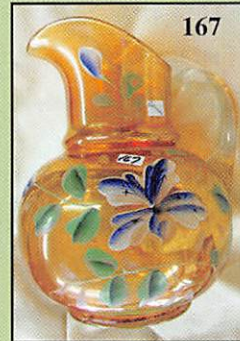


TERMS: Cash or Good Check, VISA and MasterCard accepted.

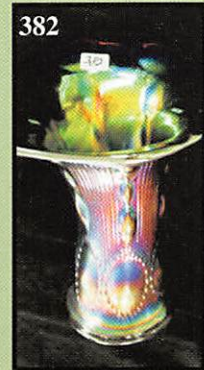
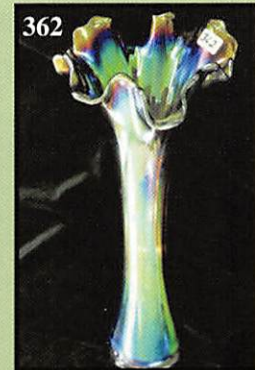
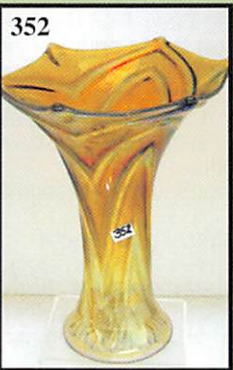
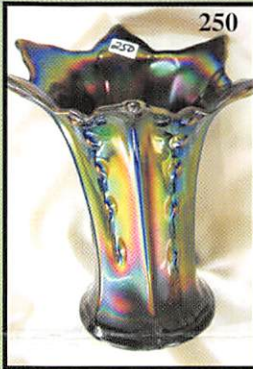


5% Clerking Fee on all purchases except for payment of cash or check.

Proper I.D. required.



*** No return on any items once sold (No Exceptions)



★★★NO BUYERS PREMIUM★★★

ABSENTEE BID POLICY:

PLEASE NOTE: There is a \$6 handling charge for each successful bid which will be added to the selling price for all write-in bids. This is in addition to the cost of postage, insurance and packing. Your write-in bid will be entered just as if you are present and bidding. Successful bidders will be notified in 1 to 3 days by the auctioneer (so be sure to include your phone number). Direct mail bids to Auctioneer Mickey Reichel, 18350 Hunters Ridge Ct., Boonville, MO 65233-2971. Terms: Cash or Check accepted with proper I.D. and Social Security Number and References. Announcements made day of the auction supercede all printed material. Not Responsible for Accidents or Sold Items. Call in Bids before Auction Welcome!

Call for additional information: 660-882-5292 days or 660-882-5283 evenings before 9:00 p.m.

FAX: 660-882-5292

(evening hours start FAX transmission after beep)

E-mail: mreichel@AWK-SHN.com

Web Site: www.awk-shn.com

they leave the Auction Center * * *
(options)

SEE REVERSE FOR DETAILS