

- _____ 1. Smoke-Imperial Swirl vase, pretty
- _____ 2. **M-Two handled 8 ½" urn vase**
- _____ 3. M-N Thin Rib 8" vase
- _____ 4. **M-N Thin Rib Vt. 6 ¼" squatty vase**
- _____ 5. Citrine-N Thin Rib 9 ½" vase
- _____ 6. **PO-Dugan 7 ½" pinched in Hyacinth vase**
- _____ 7. Dugan Venetian Swirl 6 ½" art glass vase, clambroth
- _____ 8. **Amber-Westmoreland Corinth 8 ¼" JIP vase**
- _____ 9. P-Westmoreland Corinth 9" JIP vase
- _____ 10. **Yellow Amber-Westmoreland Corinth 9 ½" vase**
- _____ 11. Lt M-Westmoreland Corinth 9 ¼" vase
- _____ 12. **P-Westmoreland Corinth 9" vase**
- _____ 13. M-Golden Flower 7" vase
- _____ 14. **M-Fenton Boggy Bayou 6 ¼" squatty vase**
- _____ 15. M-Rings 8" vase, made by Anchor Hocking
- _____ 16. **G-N Tree Trunk 7 ½" vase, pretty overlay**
- _____ 17. G-N Tree Trunk 7" vase, also nice
- _____ 18. **P-N Tree Trunk 12" mid-size vase, 6 ¼" opening, radium silver finish**
- _____ 19. M-Tree Bark 7 ½" vase
- _____ 20. **G-Fenton April Showers 11 ½" vase**
- _____ 21. Red Amberina-Fenton Knotted Beads 10" vase, CRE top, not iridized but super neat!
- _____ 22. **M-Fenton Knotted Beads 9 ½" vase, CRE top**
- _____ 23. M-Ribbed Panel 8 ¼" blown vase
- _____ 24. **W-Dugan Lined Lattice 11" vase**
- _____ 25. M-Ranger creamer and sugar
- _____ 26. **Red-Fenton Orange Tree 9" ruffled bowl, lots of pinks and golds**
- _____ 27. Teal-Imp Heavy Grape 8 ½" bowl
- _____ 28. **Teal-Imp Heavy Grape 6 ¼" bowl**
- _____ 29. Clambroth-Imp Floral and Optic 8 ½" round bowl, lots of pastel color
- _____ 30. **M-Imp Oval and Rounds 9 ¼" ruffled bowl, dark and pretty**
- _____ 31. M-Imp Windmill 5 ½" ruffled bowl
- _____ 32. **G-Imp Pansy 9" ruffled bowl**
- _____ 33. G-Imp Scroll Embossed 6" ruffled compote
- _____ 34. **M-Dugan Beaded Basket**
- _____ 35. M-Dugan Coin Spot ruffled compote
- _____ 36. **PO-Dugan Coin Spot ruffled compote**
- _____ 37. M-Louisa nut bowl, very nice
- _____ 38. **Lime G-Fenton Smooth Rays 9 ½", 3 in 1 bowl**
- _____ 39. G-N. Smooth Rays ruffled compote
- _____ 40. **Aqua-Westmoreland ruffled compote, plain interior**
- _____ 41. P-Dugan Maple Leaf tumblers, 4 x \$
- _____ 42. **G-Fenton Butterfly and Fern tumbler, marie base, very pretty**
- _____ 43. B-Fenton Blueberry tumbler, radium silver finish
- _____ 44. **Reverse Amberina-Fenton Blackberry Spray 6 ½" JIP hat**
- _____ 45. Reverse Amberina-Fenton Stippled Rays 6" ICS bowl
- _____ 46. **M-Fenton Peacock and Grape 9" spat-ftd plate, desirable piece**
- _____ 47. A-Fenton Coin Dot 7 ½" ruffled bowl
- _____ 48. **Ice B-N Hearts and Flowers ruffled bowl, nice pastel**
- _____ 49. M-Fenton Water Lily 9" ICS, footed bowl, dark and nice
- _____ 50. **B-Fenton Water Lily 10" ruffled, footed bowl**
- _____ 51. A-Fenton Thistle 8 ½" ruffled bowl
- _____ 52. **Rich M-Imp Lustre Rose fernery**
- _____ 53. M-Imp Grape 9" ruffled bowl, excellent color
- _____ 54. **Dark P-N Good Luck PCE bowl, electric blues and purples**
- _____ 55. B-Fenton Vintage 5 ½" round berry bowl
- _____ 56. **B-Fenton Cherry Chain 9 ½" ICS bowl, quite lovely, Orange Tree exterior**
- _____ 57. A-Fenton Vintage 8 ¾" ruffled bowl
- _____ 58. **G-Fenton Little Flowers 10 ¼" ruffled bowl**
- _____ 59. P-Fenton Vintage 9" ruffled bowl, edge chip
- _____ 60. **Beautiful G-Fenton Ten Mums 10 ¼" ruffled bowl**
- _____ 61. A-Fenton Vintage 8 ½" 3 in 1 bowl
- _____ 62. **A-Fenton Vintage 7 ¾" CRE bowl, scarce rim treatment**
- _____ 63. B-Fenton Autumn Acorns 8 ¾" ruffled bowl
- _____ 64. **A-N Three Fruits Medallion spat-ftd, ruffled bowl w/ soft, sweet sheen**
- _____ 65. B-Fenton Holly 6" ruffled hat
- _____ 66. **Cobalt B-Fenton Holly 9" ruffled bowl**
- _____ 67. A-Fenton Butterfly bonbon, 4 sides up
- _____ 68. **B-Fenton Holly 9", 3 in 1 bowl**
- _____ 69. M-Fenton Holly 6 ½" square hat, beautiful stretch iridescence
- _____ 70. **B-Fenton Stag and Holly 10 ½", ICS, footed bowl, lots of blues**
- _____ 71. G-N Three Fruits 9" ruffled bowl, BW exterior
- _____ 72. **A-Fenton Orange Tree 9" low ICS bowl**
- _____ 73. PO-Dugan Double Stem Rose 10 ruffle bowl, excellent example
- _____ 74. **PO-Dugan Flowers and Frames 9" tri-corner bowl**
- _____ 75. PO-Dugan Ski Star 9" handgrip plate, dome base
- _____ 76. **PO-Dugan Stippled Petals 10 ruffle bowl with Enameled Forget Me Nots**
- _____ 77. PO-Dugan Ski Star 8 ½" banana shape bowl, great color and great shape
- _____ 78. **PO-Dugan Border Plants 8 ¾", 3 in 1 crimp, ten ruffle bowl**
- _____ 79. PO-Dugan Apple Blossom Twigs 9", ten ruffle, smooth edge bowl, a beauty
- _____ 80. **PO-Dugan Flowers and Frames ten ruffle bowl, rich opal on back**
- _____ 81. PO-Dugan Double Stem Rose 9" dome-footed plate
- _____ 82. **W-Dugan Double Stem Rose 9" dome-footed plate**
- _____ 83. W-Dugan Double Stem Rose 9 ¼", ten ruffle bowl, pretty pastels
- _____ 84. **Amber-Imperial Open Rose 9" plate, top notch color**
- _____ 85. M-Imperial Grape 9" ruffled bowl
- _____ 86. **M-Imperial Pansy dresser tray, nice find**
- _____ 87. Shimmering Clambroth-Imperial Grape 9" ruffled bowl
- _____ 88. **P-Imperial Grape 9" ruffled bowl, multi-electric**
- _____ 89. Smoke-Imperial Diamond Ring 5 ½" ruffled bowl
- _____ 90. **P-Imperial Shell and Sand 8" ruffled bowl, a honey!**
- _____ 91. P-Imperial Pansy 9" ruffled bowl, super nice
- _____ 92. **W-Imperial Smooth Panels 4 ½" vase, with 5" flared opening, a little gem!**
- _____ 93. RARE W-Northwood #648, wide, flared, 13 ¼" stretch bowl—gorgeous color, plate 531 in stretch book
- _____ 94. **M-Mlbg Seaweed 10", 3 in 1 edge bowl, very popular Millersburg pattern**
- _____ 95. Light M-N Grape and Cable tumblers, 2 x \$
- _____ 96. **Nice P-N Oriental Poppy tumbler**
- _____ 97. M-Fenton Butterfly and Berry tumbler
- _____ 98. **B-Dugan Rambler Rose tumbler**
- _____ 99. M-Imperial Grape tumbler
- _____ 100. **P-Dugan Fisherman's Mug—"Compliments of Rosenbloom's, Piedmont, W. Va."**
- _____ 101. M-Blown glass 8 ½" stemmed wine glass, very different
- _____ 102. **M-Imperial Waffle Block handled basket**
- _____ 103. Dark M-Fenton Butterfly and Berry 7 ½" vase with CRE top
- _____ 104. **M-7 ½" bulbous vase, with enameled floral decoration, not often seen**
- _____ 105. W-Dugan Big Basketweave 11" vase
- _____ 106. **P-N Fine Rib 7" squatty vase, exquisite interior**
- _____ 107. PO-Dugan Wide Rib 11 ½" vase, no rust on this vase!
- _____ 108. **M-Dugan Malaga 8 ¼", deep, round, flared bowl, quite difficult to find**
- _____ 109. B-Fenton Vintage Fernery bowl
- _____ 110. **P-N Wishbone center lily, chip on base**
- _____ 111. P-N Grape and Cable tumblers, 2 x \$
- _____ 112. **P-N Grape and Cable spooner**
- _____ 113. P-N Grape and Cable banded cologne with matching stopper, a great find!
- _____ 114. **P-N Grape and Cable 7 piece water set**
- _____ 115. P-N Acorn Burrs punch cup
- _____ 116. **P-N Memphis punch cup**
- _____ 117. P-N Grape and Cable punch cups, 2 x \$
- _____ 118. **P-N Fruits and Flowers 7 ¼" ruffled bowl**
- _____ 119. P-N Strawberry PCE bowl, quite attractive
- _____ 120. **P-Dugan (?) "Interior Darts" (my name for it) 3 ¼" ruffled hat, 5 ½" top, first one I've seen**
- _____ 121. P-Imperial Jewels 7" square bowl, Iron Cross Mark, striking!

122. **Dark Aqua (?)**-Imperial Lustre Rose fernery, never seen one in this color and it's pretty!
123. A-Fenton Blackberry Open Edge ruffled hat
124. **Very scarce G-Imperial Fashion breakfast sugar, emerald green interior and so hard to find!**
125. M Flash-Perfume, etched, with undamaged dauber, another unusual find
126. **B-Fenton Diamond Point Columns 14 1/2" vase with CRE top**
127. G-Fenton Diamond Point Columns 7 1/2" vase
128. **M-Fenton Diamond Point Columns 5 1/4" squat-ty vase**
129. G-Fenton Diamond Point Columns 8" vase
130. **Ivory Custard-Imperial Smooth Panels 12 1/2" vase, yes it's iridized and so scarce**
131. Superb M-Imperial Smooth Panels 11 1/4" vase
132. **Pastel M-Imperial Smooth Panels 5 1/4" vase, lovely**
133. Pastel M-Imperial Smooth Panels 11 3/4" vase
134. **B-Fenton Diamond and Rib 13" vase, tulip top**
135. Dark A-Fenton Diamond and Rib 12" vase, tulip top
136. **Spectacular A-Fenton Diamond and Rib 12" vase, tulip top**
137. G-Fenton Diamond and Rib 11" vase, tulip top
138. **A-Fenton Diamond and Rib 7 1/2" vase, tulip top**
139. Pretty G-Fenton Diamond and Rib 9 1/2" vase
140. **B-Fenton Diamond and Rib 8 3/4" vase**
141. Killer M-Imperial Beaded Bullseye 10 1/4" vase, 5 1/4" opening
142. **Amber-Imperial Beaded Bullseye 9" vase, 6" opening**
143. Super M-Imperial Beaded Bullseye 11 1/2" vase
144. **M-Imperial Morning Glory 10 1/2" JIP vase**
145. Ice G-Fenton Florentine 8 1/2" single candlestick, glows
146. **Green Vaseline-Imperial Windmill 8" mid-size pitcher, glows wildly, very scarce**
147. Sapphire-N Colonial 10 1/4" candlesticks, pair, well matched and pretty
148. **Chinese Coral-N Swirl 9" vase, not iridized**
149. Ice B-N Hearts and Flowers ruffled bowl
150. **W-N Hearts and Flowers ruffled bowl**
151. M-N Embroidered Mums ruffled bowl, extra nice example
152. **Awesome Amber-Imperial Heavy Grape 8 1/2" plate**
153. Super Smoke-Imperial Heavy Grape 8" plate
154. **P-Imperial Grape 9" ruffled bowl, electric hues deluxe**
155. M-Imperial Pansy 9" ruffled bowl, blues and pinks
156. **M-Fenton Little Flowers 9 1/2" ruffled bowl**
157. M-Imperial Pansy nappy
158. **Pumpkin M-N Grape and Cable butter dish with lid**
159. M-Fenton Strawberry bonbon
160. **Electric B-N Double Loop open sugar**
161. Rich M-Thistle and Thorn 8 1/2" ruffled, footed bowl
162. **Ice G-N Drapery 9" vase, very good feet**
163. M-Imperial Ripple 7 3/4" vase
164. **B-Fenton Chrysanthemum/Windmill 11" ruffled, footed bowl**
165. M-Dugan Double Stem Rose ten ruffle bowl
166. **B-Fenton Two Flowers 10" ruffled, footed bowl**
167. Dark M-Fenton Grape and Cable 7 1/2" ruffled bowl
168. **P-N Nautilus creamer, signed Northwood in script**
169. M-Fenton Dragon and Lotus 8 3/4" ruffled bowl, distinct yellowish hue
170. **Renninger B-N stippled Good Luck PCE bowl, a prize piece for color and iridescence**
171. A-Fenton Coin Dot 8 1/2", 3 in 1 bowl
172. **Clambroth-Fenton Orange Tree 9 1/2" plate**
173. Stunning Electric BA-Dugan Circle Scroll tri-corner hat whimsy from tumbler
174. **G-Fenton Blackberry Spray 6 1/2" ruffled hat, luscious colors**
175. A-Fenton Peacock and Grape 9", 3 in 1 bowl, another beauty
176. **G-Fenton Stag and Holly 7 3/4" spat-ftd, ruffled bowl, open bubble on foot**
177. W-N Peacock at Urn 10" master ICS bowl, nice pastels
178. **Rare P-Fenton Vintage ruffled bowl, whimsied from fernery, neat!**
179. PO-Dugan Nautical creamer, quite nice
180. **Deep P-Dugan Butterfly and Tulip 13" square bowl, extremely pretty, butterfly lines up right**
181. G-Fenton Butterfly and Tulip 11 1/2", eight ruffle bowl, a knockout! Contemporary
182. **Plum Opal-Fenton Christmas compote, contemporary**
183. Electric B-Fenton Christmas compote, contemporary
184. **Seafoam Green Opal-Fenton Christmas compote, contemporary**
185. Red-Fenton Christmas compote, contemporary, fabulous
186. **Vaseline Opal-Fenton Christmas compote, super, contemporary**
187. Vaseline Opal-Gibson TCGC grape pattern cuspidor, contemporary, great club piece
188. **Aqua-Fenton Heavy Iris 5 piece tankard water set, contemporary**
189. Emerald Green over Milkglass-Fenton Poppy Show vase, made for Singleton Bailey
190. **Blue Burmese-Fenton Poppy Show vase, made for Singleton Bailey**
191. Electric B-Fenton Peacock Garden 7 1/2" flared top vase, contemporary
192. **Burmese-Fenton Peacock Garden 7 3/4" vase, straight top, contemporary, not iridized**
193. Burmese-Fenton Farmyard cuspidor, made for Singleton Bailey, contemporary, not iridized
194. **Smoke-Imperial Open Rose 11" ruffled bowl, large and lovely**
195. P-Imperial Heavy Grape 9" ruffled bowl, large open bubble in center
196. **Sensational Smoke-Imperial Wide Panel 10" rolled rim rosebowl, Tiffany like finish**
197. M-Fenton Peacock at Urn ruffled bowl, radium beauty
198. **Frosty W-Fenton Peacock at Urn ruffled bowl**
199. P-N Memphis punch or fruit bowl base, electric
200. **Fantastic Electric BA-Dugan Many Fruits ruffled punch bowl**
201. W-Fenton Orange Tree 9 1/4" plate, very nice
202. **W-Fenton Leaf Chain 8 1/2" ICS bowl, outstanding**
203. W-Fenton Leaf Chain 9" ruffled bowl, frosty
204. **M-Fenton Orange Tree 9 3/8" plate, great example**
205. A-Dugan Single Flower 7" ruffled bowl
206. **M-N Good Luck ruffled bowl, BW exterior**
207. Teal-Westmoreland 6" shell dish
208. **M-Westmoreland Carolina Dogwood 9" ruffled bowl, loaded with color**
209. Marigold over Milkglass-Westmoreland Scales 9" ruffled bowl, tough to find
210. **Radium M-Dugan Apple Blossom Twigs 9", low ten ruffle bowl, different**
211. M-Fenton Autumn Acorns 8 1/2" ruffled bowl
212. **P-Dugan Six Petals 7 3/4" ruffled bowl, nice coloration**
213. PO-Dugan Six Petals 7 3/4" crimped edge bowl
214. **PO-Dugan Dogwood Sprays 9", ten ruffle bowl**
215. PO-Dugan Four Flowers 6" ruffled bowl, loaded with opal
216. **B-Fenton Vintage 9 1/2", ICS bowl**
217. Radium G-Mlbg Peacock Tail Vt. ruffled compote
218. **Great M-Mlbg Little Stars 8 1/2", 3 in 1 edge bowl**
219. M-Mlbg Little Stars 7 1/2" ruffled bowl, equally nice
220. **G-Mlbg Little Stars 7 1/2" ruffled bowl**
221. M-Mlbg Hanging Cherries 9 3/4", ICS bowl, great color in center
222. **G-Mlbg Hanging Cherries 8 1/2" ICS bowl, scarce mid-size and delightful iridescence**
223. G-Mlbg Hanging Cherries 7 1/4" ICS bowl, center fracture
224. **G-Mlbg Rosalind 9" ruffled bowl**
225. P-Mlbg Rosalind 9 1/4" ruffled bowl, super nice
226. **M-Mlbg Blackberry Wreath 8 3/4", 3 in 1 bowl**
227. Exquisite A-Mlbg Diamonds tumbler

_____ 228. G-Mlbg Diamonds water pitcher

_____ 229. G-Mlbg Diamonds tumbler

_____ 230. Amazing Radium G-Mlbg Strawberry Wreath 9" ICS bowl, find one better!

_____ 231. G-Mlbg Strawberry Wreath ruffled compote

_____ 232. Stunning P-Mlbg Strawberry Wreath ruffled compote

_____ 233. Radium M-Mlbg Blackberry Wreath 9 3/4" ICS bowl

_____ 234. Superb M-N stippled Three Fruits 8 3/4" ruffled bowl

_____ 235. W-N Thin Rib 12" mid-size funeral vase, scarce item

_____ 236. W-Dugan Target 6 1/2" squatty vase, 6" opening, great, great shape!

_____ 237. W-Dugan Target 11 1/4" vase

_____ 238. Smoke-Imperial Mini Morning Glory 6 1/2" vase

_____ 239. Electric P-Imperial Mini Morning Glory 7 1/2" vase

_____ 240. W stretch-Imperial Smooth Panels 5 3/4" vase, 6" opening, Iron Cross Mark

_____ 241. A-Fenton Plume Panels 12 1/2" vase, double spout model!

_____ 242. Sapphire-Fenton Fine Rib 10" vase

_____ 243. Marvelous Electric P-N Thin Rib 6 1/4" vase

_____ 244. AO-N Peacocks ruffled bowl, soft, lovely butter scotch, birds are full of color

_____ 245. M-Palm Beach 6" square bowl, pinched in sides, goofus treatment on exterior

_____ 246. Pumpkin M-N Singing Birds mug

_____ 247. G-Fenton Peacock and Grape 8 3/4", 3 in 1, spat-ftd bowl, super fine color

_____ 248. A-Fenton Peacock and Grape 8 3/4", 3 in 1, collar base bowl, dynamite color

_____ 249. Sapphire base-Fenton Water Lily 6" ruffled sauce, has aqua feet

_____ 250. Amethyst Opal-Fenton Dragon and Lotus 8 3/4" ruffled bowl, very scarce color

_____ 251. Green-Imperial Mount Rushmore 10 1/4" chop plate, 1970, beautiful

_____ 252. M-Imperial Monument Valley 10 1/4" chop plate, 1972

_____ 253. P-N Grape and Cable master punch bowl, base, 13 cups, great matched color, spotting on interior of bowl

_____ 254. M-Imperial Fashion punch set consisting of bowl and nine cups, no base

_____ 254A Ice G-N Peacocks 9 1/2" plate, Rib exterior, above average

_____ 255. M-Daisy Chain light shade

_____ 256. W-Hammered Bell light shades, 2 x S

_____ 257. Electric P-Imperial 15 1/2" Morning Glory funeral vase, large chip on base (sigh!)

_____ 258. PO-Dugan Wide Rib 4 1/2" jardinière vase, 6 1/2" opening

_____ 259. PO-Dugan 9" Beauty vase

_____ 260. W-Fenton Orange Tree 9 1/2" plate

SPECIAL NOTE:

NO SUNDAY CALLS, PLEASE!

Winning Absentee Bidders will be contacted Monday through Wednesday of the week following the Auction!

Thank You!

SEND ALL MAIL TO:

18350 Hunters Ridge Ct.

Boonville, MO 65233

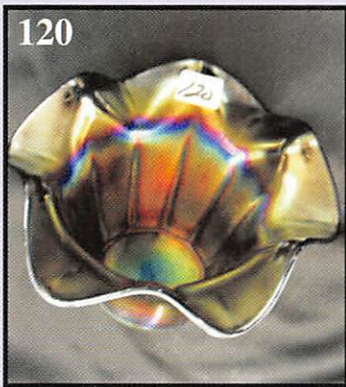
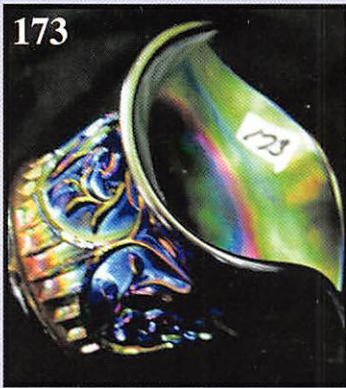
WATCH:  Web Site: www.AWK-SHN.com

261. W-Fenton Orange Tree 8 1/2" ICS bowl
 262. M-N Three Fruits 9" plate, warp speed Scotty!
 263. Ice B-N Hearts and Flowers ruffled bowl
 264. Dark M-Fenton Waterlily and Cattails spooner
 265. Smoke-Imperial Freefold 12 1/4" vase, very nice
 266. Smoke-Imperial Ripple 10 1/2" vase, scintillating color
 267. Smoke-Imperial Ripple 10 1/2" vase, very pretty
 268. Ice B-N Nippon PCE bowl, great iridescence
 269. W-N Nippon PCE bowl, scarce BW back
 270. Ice G-N Peacocks PCE bowl, splendid
 271. Clambroth-Fenton Leaf Chain 9 3/8" plate
 272. W-Fenton Rose Bouquet bonbon, four sides up, very scarce
 273. W-Dugan Apple Blossom Twigs 8 1/4" ICS bowl, radium pastel
 274. Red-Imperial Chesterfield compote, tough piece to find and super
 275. Vaseline stretch-Tri corner cuspidor shape vase, 5" tall, 5 1/2" opening
 276. A-Fenton Heart and Vine 8" CRE bowl, love that shape!
 277. Chocolate Glass-1974 St. Clair "Bob and Maude, 1974" shock of wheat toothpick holder
 278. M-Fenton Ragged Robin 8 1/2", 3 in 1 bowl, scarce in any color
 279. P-Mlbg Whirling Leaves 9 3/4", 3 in 1 bowl, radium delight
 280. P-N Embroidered Mums 9" ruffled bowl, collector favorite
 281. Superb M-N stippled Three Fruits 9" ruffled bowl
 282. M-N Strawberry 9" plate, great eye appeal
 283. M-N Nippon 8 3/4" ruffled bowl, BW back
 284. M-N Greek Key 9" ruffled bowl, pretty
 285. M-N Greek Key PCE bowl, also nice
 286. W-Dugan Fanciful 8 1/2" turned up plate, pretty pastels
 287. W-Dugan Roundup 8 3/4" ICS bowl, bewitching pastels
 288. W-Dugan Roundup 8 1/2" ruffled bowl, another beauty
 289. M-N Peacocks 9" plate, rich color
 290. Ice G-N Peacocks 8 3/4" plate, plain back, fabulous color
 291. Ice G-N Peacocks 9" plate, Rib exterior
 292. M-N Good Luck PCE bowl, a beauty
 293. M-N Good Luck PCE bowl, BW exterior, also loaded with color
 294. Sapphire-N Good Luck ruffled bowl, smoking hot blues
 295. G-N Three Fruits PCE bowl
 296. Pumpkin M-N stippled Strawberry ruffled bowl
 297. Fantastic Electric B-N stippled Strawberry ruffled bowl, whew!
 298. P-N Three Fruits 8 3/4" ruffled bowl, smooth exterior, electric iridescence
 299. Blue Opal-N Peacocks 8 1/2" ruffled bowl, exceptionally nice
 300. Superb P-N Rose Show ruffled bowl, check out the color on this one!
 301. Deep M-N Three Fruits 8 3/4" plate
 302. M over Vaseline Westmoreland Basketweave & Cable creamer with lid. Scarce cutie
 303. M-N Grape and Cable Vt. 9" plate
 304. Electric P-Dugan Wide Rib 12" vase
 305. Electric P-Dugan Circle Scroll 7 3/4" vase
 306. Honey Amber-N Three Fruits 8 3/4" ruffled bowl
 307. Stunning B-Fenton Stag and Holly 10 1/2", ICS, ball footed bowl
 308. Sapphire-Diamond Spindle 8 3/4" candlesticks, pair
 309. Sapphire-N Concave Diamonds 6" vase, tri-corner top
 310. Russet-N Concave Diamonds tumbler from night (or guest) set
 311. Sapphire-N Concave Diamonds tumbler from night (or guest) set
 312. White stretch w/ green enamel trim-U.S. Glass 4 5/8" tall with flattened top, scarce
 313. B-Dugan Grape Delight nut bowl
 314. B-Fenton Grape and Cable 7 1/2" ball-footed bowl, radium dandy

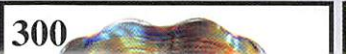
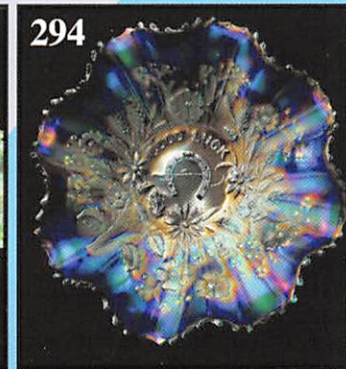
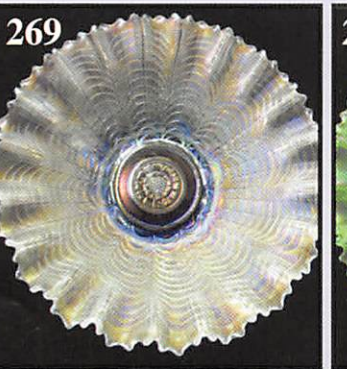
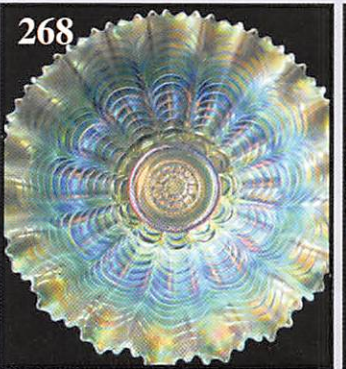
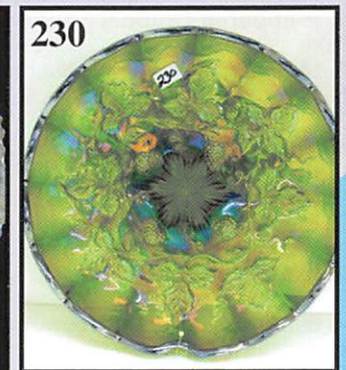
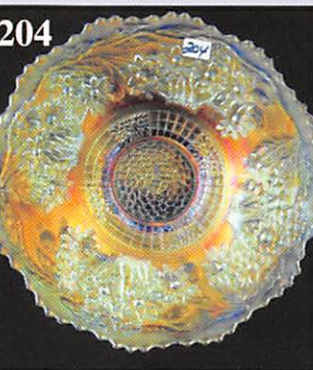
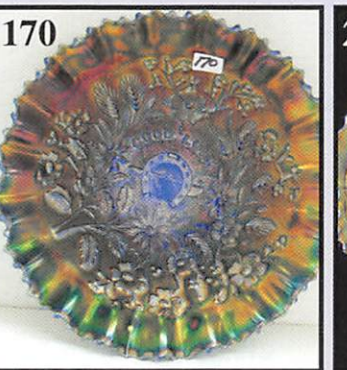
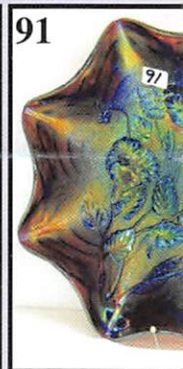
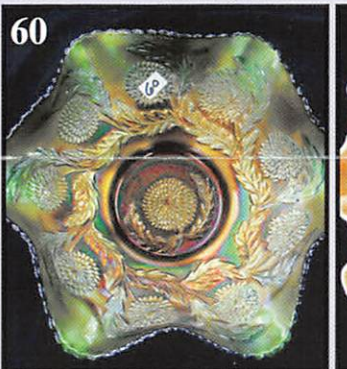
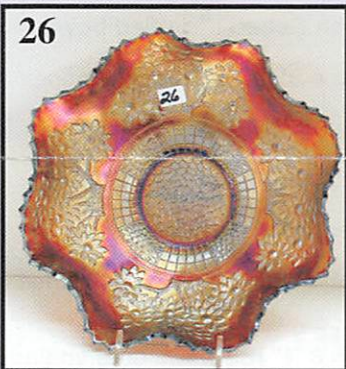
315. G-Fenton Grape and Cable 8" spat-ftd, ruffled bowl
 316. A-Fenton Vintage 9 1/2" ICS bowl
 317. P-Dugan Cherries 5 3/4" ruffled bowl, breathtaking color
 318. P-N Fine Cut and Roses rosebowl, super, super
 319. P-Dugan Leaf Rays spade shape nappy, extra nice
 320. Ice B-N Sunflower 8" spat-ftd, ruffled bowl, great piece!
 321. Awesome M-Fenton Lions 7 1/2" plate, wow!
 322. Super M-N Rose Show 9 1/2" plate
 323. M-Fenton Pine Cone 6 1/4" round plate
 324. W-N Rose Show 9 1/2" plate
 325. Pretty M-Fenton Captive Rose 9 1/2" plate
 326. Vaseline stretch-N 8" round bowl, with tree bark base
 327. W-N Wishbone 8 1/2" footed bowl, dripping with pastels
 328. W-N Poppy Show 8 3/4" ruffled bowl, pretty blue highlights
 329. White stretch-Imperial 10 1/4" 14-paneled plate, ravishing!
 330. Amber stretch-6 1/2" plates, with polished pontil, 2 x \$
 331. Vaseline stretch-6" eight-sided plate
 332. Vaseline stretch-7 3/4" eight-sided plates, 2 x \$
 333. White stretch-6 3/8" plate
 334. M-Fenton Stippled Rays 6 3/4" plate
 335. M flashed-Miniature JIP 2" vase
 336. B-Fenton Pine Cone 7" ICS plate
 337. M-Fenton Pine Cone 6", 12-sided plate
 338. A-Mlbg Blackberry Wreath 6" ruffled bowls, 2 x \$
 339. M-Mlbg Blackberry Wreath 6" ruffled bowl, radium
 340. P-N Wild Strawberry 9 3/4" ruffled bowl, outstanding example
 341. A-Fenton Captive Rose 8 3/4" ruffled bowl
 342. Emerald G-Fenton Ten Mums 10" ruffled bowl, no upgrade needed here!
 343. Fabulous B-Fenton Peacock at Urn 9" ruffled bowl
 344. M Flashed-Checkerboard and Dutch Mill 8" plate
 345. Bk-American Iridescent Stretch Glass book, a great reference manual!
 346. Bk-Time Life Encyclopedia of Collectibles
 347. BA-Dragonflies hatpins
 348. M-Fenton #916 16 1/2" vase, CRE top
 349. B-Fenton #916 15 1/2" vase, CRE top
 350. B-Fenton #916 15 3/4" vase
 351. G-Fenton #916 14" vase, ruffled top, very pretty
 352. A-Fenton #916 7 1/2" squatty vase, 5 1/2" opening, scarce size in this pattern
 353. G-Fenton #916 8 3/4" vase, 4 3/4" opening, another scarce one for size
 354. G-Rustic Variant 16 1/4" tall, ten flame tips
 355. B-Fenton Fine Rib 16" vase, with a 12 1/2" front height, shows well!
 356. A-Fenton Fine Rib 12" vase
 357. M-Fenton Fine Rib 10 1/4" vase
 358. Sapphire-Fenton Fine Rib 10" vase, scarce color
 359. Blue-Fenton Fine Rib 9 1/2" vase
 360. Pumpkin M-#251 pedestal footed 11" vase

**Approximately 18 more
 numbered lots to end
 this auction.**

 **Call Today To Sell Your Fine Items**
660-882-5292 Day
660-882-5283 Evening



PUBLIC CARNIVAL AUCTION
Saturday- September 17th
 *Friday Preview : Sept. 16th - 12:00 Noon
Held at The Mickey Reichel Auction
Boonville, Missouri - Photos by
Sellers, Jacque Kenyon, Angela
Sandra Conkin and Cathy Janus.
Closing of Estates and
 See www.awk-shn.com
 mailing address and phone number



WINTER GEM AUCTION

January 14, 2011 @ 9:00 AM CDT

Location - 5:00 PM & 7:30 AM Auction Day

Auction Gallery 1440 Ashley Road

Website > tour www.awk-shn.com

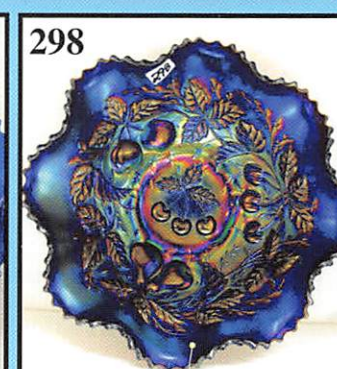
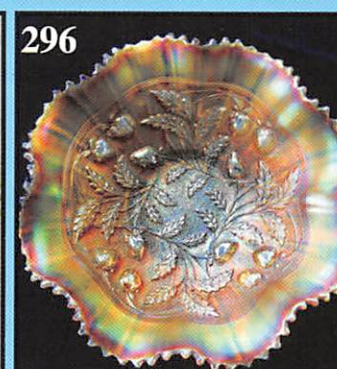
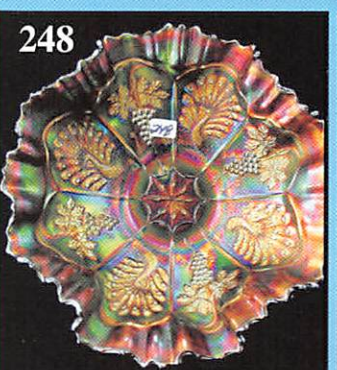
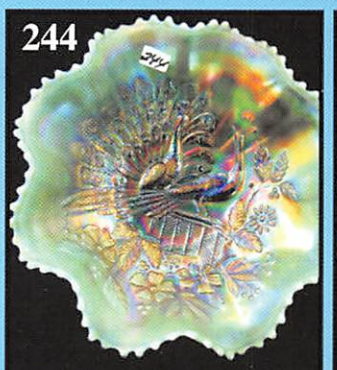
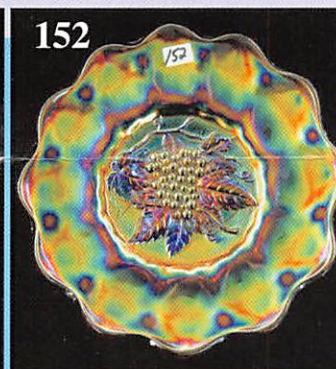
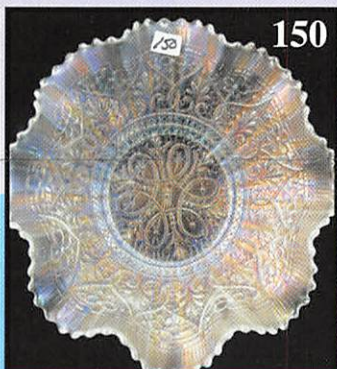
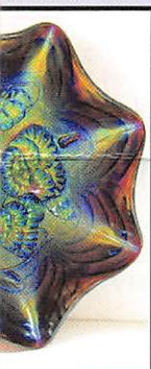
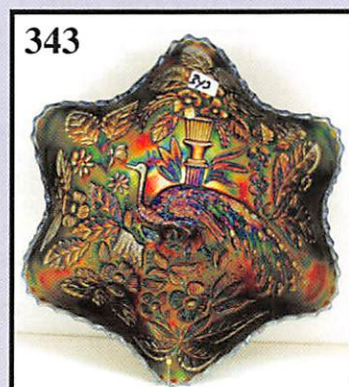
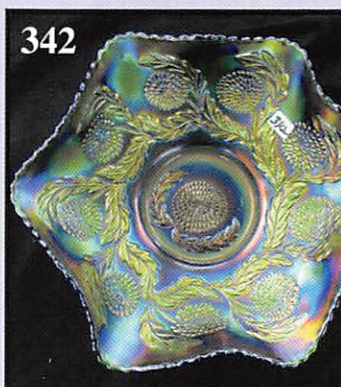
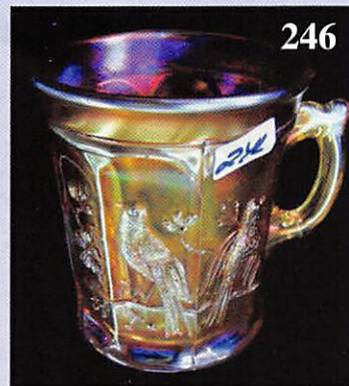
Hosts - Marie Cummings, Jerry House,

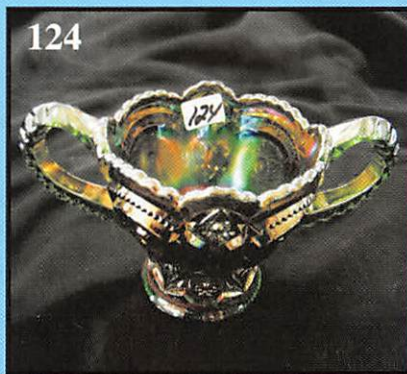
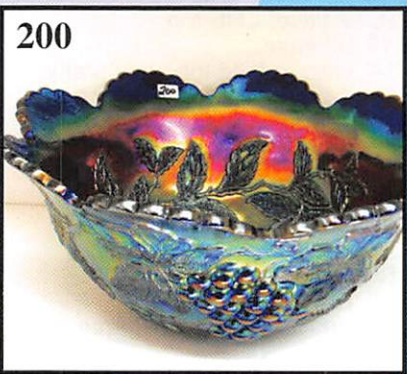
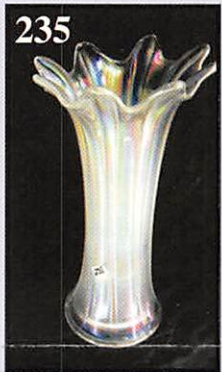
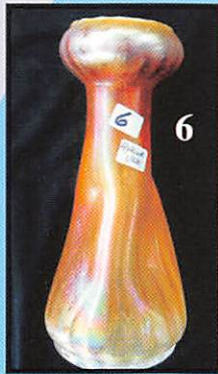
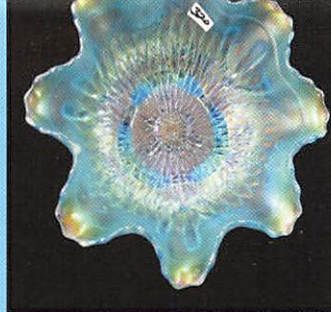
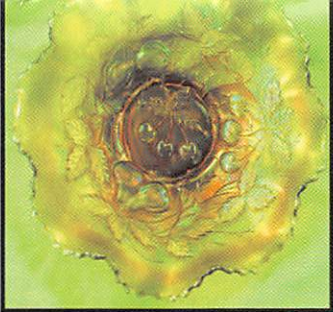
Everything sold with No reserve.

Benefit for the Loss of a Loved One

For absentee bidding,

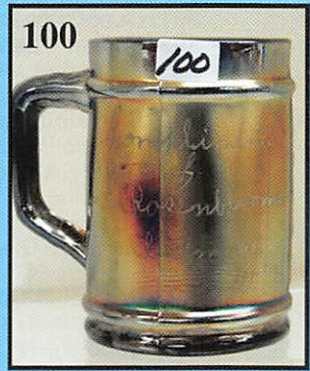
Call Phone numbers



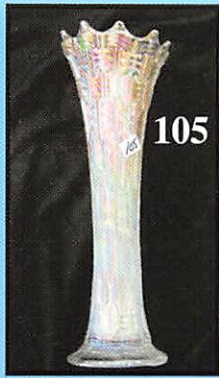


Make Reservations EARLY at one of these local motels:
Days Inn: 660-882-8624
Comfort Inn: 660-882-5317
Super 8: 660-882-2900
Holiday Inn: 660-882-6882
Mickey Reichel Auction Center
 1 Mile North of I-70 on Hwy. 5, Exit 101, Boonville, Missouri, 20 Miles West of Columbia, MO on I-70

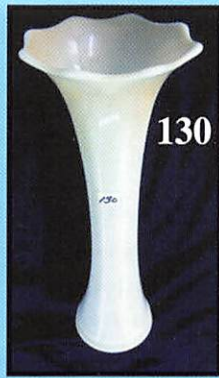
 **TERMS:** Cash or Good Check, VISA and MasterCard accepted. 
 5% Clerking Fee on all purchases except for payment of cash or check.
 Proper I.D. required.



*** No return on any items once t
 (No Exce



105



130



136



139



265



266
267



304



305



245



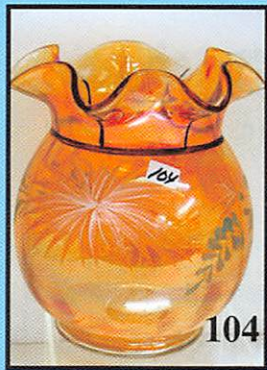
274



253



272



104



113

★★★NO BUYERS PREMIUM★★★

ABSENTEE BID POLICY:

PLEASE NOTE: There is a **\$6 handling charge for each successful bid which will be added to the selling price** for all write-in bids. This is in addition to the cost of postage, insurance and packing. Your write-in bid will be entered just as if you are present and bidding. **Successful bidders will be notified in 1 to 3 days by the auctioneer** (so be sure to include your phone number). Direct mail bids to Auctioneer Mickey Reichel, 18350 Hunters Ridge Ct., Boonville, MO 65233-2971. Terms: Cash or Check accepted with proper I.D. and Social Security Number and References. Announcements made day of the auction supercede all printed material. Not Responsible for Accidents or Sold Items. **Call in Bids before Auction Welcome!**

Call for additional information: 660-882-5292 days or 660-882-5283 evenings before 9:00 p.m.

FAX: 660-882-5292

(evening hours start FAX transmission after beep)

E-mail: mreichel@AWK-SHN.com

Web Site: www.awk-shn.com

they leave the Auction Center ***
(options)

SEE REVERSE FOR DETAILS