

- _____ 1. M-Imperial Open Rose 9 1/4" bowl
- _____ 2. **Rich M-Imperial Lustre Rose fernery**
- _____ 3. M-Fenton Stippled Rays 8 1/2" CRE bowl, scarce shape
- _____ 4. **M-N Stippled Rays 9 1/2" PCE bowl, smooth exterior, pastel hues**
- _____ 5. A-Fenton Vintage card tray shape bonbon
- _____ 6. **Outstanding A-Fenton Peacock and Grape ruffled bowl, collar base**
- _____ 7. B-Fenton Feathered Serpent 5 1/2" berry bowl, small base chip
- _____ 8. **B-Fenton Birds and Cherries compote, a collector favorite**
- _____ 9. M-Dugan Cosmos Vt. 9 1/2" bowl
- _____ 10. **Ice G-N Peacocks 9" plate, popular piece**
- _____ 11. W-St. Clair grape pattern single handle nappy, stretchy and pretty
- _____ 12. **M-N stippled Three Fruits 9" plate, excellent color**
- _____ 13. Radium M-Imperial Heavy Grape 6" round bowl, super
- _____ 14. **G-Fenton Vintage 8 3/4" bowl, top notch example**
- _____ 15. A-Fenton Vintage 8 3/4" 3 in 1 edge bowl, also nice
- _____ 16. **M-Fenton Peacock and Grape 9" bowl, pleasing yellow finish**
- _____ 17. M-Fenton Acorn 7" ruffled bowl
- _____ 18. **G-N Strawberry 8 3/4" ruffled bowl, Strawberries are in season!**
- _____ 19. P-N Strawberry 8 3/4" bowl, BW exterior
- _____ 20. **P-N Three Fruits 8 1/2" bowl, BW exterior, nice!**
- _____ 21. M-Imperial Star and File 7 1/4" round, flared bowl, neat!
- _____ 22. **Super M-Fenton Stag and Holly 10 1/2" ruffled, footed bowl**
- _____ 23. M-Fenton Blackberry Spray 6 1/2" two sides up hat
- _____ 24. **M-Fenton Panther master berry bowl, excellent pinks and blues**
- _____ 25. M-Imperial Pansy nappy, pretty interior
- _____ 26. **P-N Wild Strawberry 10" bowl, super color and great mold work**
- _____ 27. M-N Grape and Cable sherbets, nice pastels, 4 x \$
- _____ 28. **Pastel M-N Three Fruits 9" plate**
- _____ 29. Dark M-Fenton Poinsettia and Lotus 9" ICS footed bowl
- _____ 30. **Gorgeous M-Fenton Dragon and Lotus 8 3/4" bowl**
- _____ 31. B-Fenton Orange Tree 8 3/4" bowl, trunk center
- _____ 32. **M-Fenton Chrysanthemum/Windmill 9" scarce collar base bowl**
- _____ 33. B-Fenton Peacock at Urn 8 3/4" bowl
- _____ 34. **Scarce A-Fenton Peacock at Urn 8 3/4", 3 in 1 edge bowl, extra nice!**
- _____ 35. M-Fenton Peacock at Urn 9" bowl, colorful
- _____ 36. **M-Fenton Peacock at Urn 8" ICS bowl, tough shape to find and exquisite**
- _____ 37. Emerald G-Fenton Peacock at Urn 8" spat ftd. ICS bowl, marvelous!
- _____ 38. **G-Fenton Stag and Holly 7 1/2" spat ftd. nut bowl, very scarce shape**
- _____ 39. Lav-Fenton Peacock and Grape 7 1/2" spat ftd. ICS bowl, another scarce shape
- _____ 40. **A-Fenton Vintage fernery, super iridescence makes it look red**
- _____ 41. A-Fenton #916 15" vase, big and bold
- _____ 42. **W-Dugan Fanciful 9" low ruffled bowl, loaded with pastels**
- _____ 43. Electric P-Imperial Windmill 5" round bowl, not often seen
- _____ 44. **Superb Radium M-Mibg Blackberry Wreath 5 1/2" ICS bowl**
- _____ 45. Nice M-Dugan Pony ruffled bowl
- _____ 46. **B-N Embroidered Mums ruffled bowl, great pattern**
- _____ 47. G-N Singing Birds mug, pretty
- _____ 48. **P-N Singing Birds mug**
- _____ 49. P-N Grape and Cable tumblers, 2 x \$ (you get three, one has a chip)
- _____ 50. **B-N Peacocks PCE bowl, Rib exterior, multi electric**
- _____ 51. B-N Fruits and Flowers bonbon, attractive iridescence
- _____ 52. **P-N Wishbone footed bowl, multi electric**
- _____ 53. P-N Good Luck bowl, BW exterior, vibrant color
- _____ 54. **Killer G-N Singing Birds mug**
- _____ 55. G-N Singing Birds mug, also nice
- _____ 56. **P-N Singing Birds mug and B-Stork and Rushes tumbler with base chip, two for one!**
- _____ 57. W-Dugan Grapevine Lattice tumbler, scarce and nice
- _____ 58. **Dark M-Dugan Grapevine Lattice tumbler, radium**
- _____ 59. Electric P-Dugan Grapevine Lattice tumbler
- _____ 60. **Scarce W-Fenton Blueberry tumbler, nice find**
- _____ 61. G-Fenton Butterfly and Fern tumbler, excellent color
- _____ 62. **Dark M-Fenton Butterfly and Fern tumbler**
- _____ 63. G-Fenton Butterfly and Fern Vt. tumbler, great color and strike
- _____ 64. **Very Scarce M-Dugan Harvest Flower tumbler**
- _____ 65. Pumpkin M-Dugan Maple Leaf tumbler
- _____ 66. **B-Dugan Maple Leaf tumbler**
- _____ 67. Lav/Smoke-Dugan Maple Leaf tumbler, outstanding and rare
- _____ 68. **Pastel M-Dugan Maple Leaf tumbler, really looks yellow**
- _____ 69. B-Fenton Paneled Dandelion tumbler, color all the way
- _____ 70. **M-Fenton Paneled Dandelion tumbler, very nice also**
- _____ 71. Lovely B-Fenton Blackberry Block tumbler
- _____ 72. **Unusual B-Tiger Lily Vt. tumbler, likely made by Riihimaki, radium and scarce**
- _____ 73. P-N Grape and Cable banana boat
- _____ 74. **P-N Grape and Cable sweetmeat compote**
- _____ 75. Stunning P-N Grape and Cable centerpiece bowl with turned in tips
- _____ 76. **P-N Grape and Cable pin dish whimsied from tumbler**
- _____ 77. Multi electric P-Grape and Cable 8 1/2" bowl, a standout
- _____ 78. **P-N Grape and Cable compote whimsey**
- _____ 79. Electric P-N Grape and Cable cup and saucer
- _____ 80. **P-N Grape and Cable cup and saucer**
- _____ 81. P-N Grape and Cable spooner, electric blues
- _____ 82. **P-N Grape and Cable sugar w/ lid, electric hues**
- _____ 83. P-N Grape and Cable butter dish w/ lid, excellent color
- _____ 84. **P-N Grape and Cable creamer**
- _____ 85. P-N Grape and Cable Vt. 9" plate, loaded with color
- _____ 86. **B-Fenton Butterfly four sides up bonbon, real nice example**
- _____ 87. AO-N round bushel basket, superb color
- _____ 88. **P-N round bushel basket**
- _____ 89. P-N Fine Cut and Roses rosebowl, plain interior
- _____ 90. **Dark M-Imperial Windmill milk pitcher..... got milk?**
- _____ 91. Citrine-N Four Pillars 11" vase
- _____ 92. **A-Fenton Flute 10 1/2" vase**
- _____ 93. BA-Nautilus creamer, fantastic electric
- _____ 94. **PO-Dugan creamer, good color**
- _____ 95. Super M-Nautilus toothpick, beautiful
- _____ 96. **Pumpkin M-Fenton Orange Tree fruit bowl**
- _____ 97. Rare, showy G-Fenton Orange Tree fruit bowl, a real prize!
- _____ 98. **Stunning M-Imp Grape 9" deep, round fruit bowl**
- _____ 99. Smoke-Imp Open Rose 9" round, flared bowl, lots of color
- _____ 100. **Spectacular P-Dugan Butterfly and Tulips 12 1/2" square bowl-top shelf piece**
- _____ 101. M-Dugan Grape Arbor squarish fruit bowl, very scarce piece
- _____ 102. **M-Imperial Lustre Rose 11" centerpiece bowl**
- _____ 103. M-Fenton Lotus and Poinsettia 9" round, flared bowl
- _____ 104. **Pastel M-Imperial Grape 9 1/2" round, deep bowl.....what color!!**

105. P-Dugan Ski Star 11" ruffled bowl, Compass exterior, super color
106. M-Fenton Two Flowers 9 3/4" ball footed bowl
107. M-Imperial Grape 5" round berry bowls, 8 x \$
108. P-Pastel swan salt
109. Ice G Vas-Pastel swan salt
110. G-N Petals 7 1/2" ruffled compote, seldom seen
111. M-Imp Grape wine decanter, no stopper
112. Rich A-N Three Fruits PCE bowl, smooth exterior
113. M-N Beaded Cable 7 1/4" bowl, Smooth Rays interior
114. G-N Fine Cut and Roses 7 1/4" bowl, super pretty
115. M-Dugan Double Stem rose 8" bowl
116. Smoking Hot M-Imperial Hobstar Flower compote, astonishing color
117. Wisteria Stretch-N 9" JIP compote, Tree Bark base, extraordinary color, scarce shape
118. Sapphire Stretch-11 3/4" rolled rim bowl, 3 1/2" base, scintillating color
119. Sapphire Stretch-Fenton cigar ashtray
120. Aqua Stretch-7 1/2" round, flared bowl
121. Pastel M-Imperial Floral and Optic 6" footed bowl
122. Velva Rose Stretch-10" center handle tray
123. M-Delta Base 7" candlesticks, pair
124. P-Banded violet hat, scarce and pretty
125. Smoke-Imperial Lustre Rose 8", 3 in 1 edge bowl, marked IG
126. Soft B-Roll 3" novelty vase w/ original hold, neat item
127. Flashed M-5 1/2" vase with wicker holder
128. M-Imperial Open Rose 9" plate, great color
129. M-Dugan Windflower 8 1/2" bowl
130. Pumpkin M-Waterlily and Cattails 3 1/2" whimsied vase
131. B-Fenton Blackberry Banded 5 1/2" hat, pretty
132. M-Golden Wedding 1/10 pint whiskey bottle
133. Dark A-Dugan Golden Harvest wine glass, scarce
134. M-Fenton Beaded Stars 6" compote
135. M-Dugan Question Marks stemmed bonbon, nice example
136. P-Mlbg Nesting Swan 9 3/4" bowl, magnificent color on bird
137. Radium G-Mlbg Blackberry Wreath 10" ICS bowl
138. M-Mlbg Whirling Leaves 10" bowl
139. A-Mlbg Whirling Leaves 10 1/2" bowl, killer color front and back
140. Rich M-Mlbg Swirled Hobnail rosebowl, great example
141. P-Mlbg Peacocks 5 1/2" flared berry bowl, wonderful color
142. A-N Grape and Cable 6" berry bowls, 4 x \$
143. M-N Grape and Cable 6" berry bowls, 4 x \$
144. M-4 1/4" ashtray, flower in bottom of marie, see photo
145. B-Fenton 8 1/4" ICS bowl, very nice
146. M-Dugan Windflower 9" bowl
147. W-Dugan Persian Garden 6" ICS bowl, super pastels
148. W-Dugan Leaf Rays nappy
149. Rare W-Dugan Lattice Points 7 1/2" plate, gorgeous, from Eldon Bixler collection
150. Rich M-Dugan Lattice Points 7 1/2" plate, from Eldon Bixler collection, rare
151. P-Imp Grape 6 1/2" plate, very pretty
152. G-Imp Grape 6 1/2" plate, very nice and yes, the base glows!
153. Superb M-Fenton Horse Medallion 7 3/4" plate, radium beauty
154. PO-Dugan Honeycomb and Beads 7 1/2" CRE bowl
155. G-Fenton Blackberry Open Edge 5 3/4" bowl, scarce color and nice
156. Smoky B-Fenton 2 row Open Edge 5 3/4" ruffled hat
157. Red Amberina-Fenton 2 row Open Edge 5 1/4" ruffled hat
158. Red-Fenton 2 row Open Edge 6" JIP hat
159. Red-Fenton 2 row Open Edge 6", 2 sides up hat, super pretty
160. Rare Red-Fenton Sailboats 6" bowl
161. PO-Dugan Cherries 6" bowl, lots of opal
162. M-Fenton Kittens 4 1/2" flat plate, nice
163. M-Imperial corn bottle, pretty
164. P-Dugan Wishbone and Spades 6 1/2" plate, plain back, purples and golds
165. Amazing P-Dugan Wishbone and Spades 6 3/4" plate, BW back
166. P-Dugan Wishbone and Spades 6 1/2" plate, enameled "Souvenir, Sebaka, Minn."
167. PO-Dugan Single Flower 9", 3 in 1 high crimp, with enamel decoration
168. M-Fenton Persian Medallion crimped edge large compote
169. Shocking Electric P-Imp Grape wine decanter w/ stopper
170. P-Imp Grape wine glasses, 6 x \$
171. P-Imp Grape water carafe, electric highlights
172. B-Fenton Peacock at Urn 9" bowl
173. AO-N Beaded Cable rosebowl
174. AO-N Leaf and Beads rosebowl, shimmering pastels
175. AO-N Drapery rosebowl, loaded with opal
176. Pastel AO-N Fruits and Flowers stemmed compote, achingly beautiful
177. BA-Dragonfly Variant hatpin
178. BA-Hatpin, unknown pattern—see photo
179. BA-Egyptian Butterfly hatpin
180. BA-Top O' The Morning hatpin
181. BA-Faceted Oval Dart hatpin
182. BA-Hatpin, unknown pattern—see photo
183. BA-Butler's Mirror hatpin
184. BA-Six Plums hatpin
185. BA-Big Butterfly hatpin
186. BA-Leaf and Pie Panel hatpin
187. A-Fenton Three Fruits 9 1/4" plate, attractive
188. M-Fenton Three Fruits 9 1/2" plate
189. Electric B-Fenton Ribbon Tie 9", 3 in 1 edge low ruffled bowl/plate
190. Superb M-Fenton Ribbon Tie 9 1/4", 3 in 1 edge low ruffled bowl/plate
191. Scarce Pastel Powder B-Fenton Ribbon Tie 9", 3 in 1 edge bowl
192. A-Fenton Ribbon Tie 9 1/4", 3 in 1 edge low ruffled bowl
193. A-Fenton Ribbon Tie 8" CRE bowl, very scarce shape in this pattern
194. Root Beer-Fenton Holly 9" bowl, unusual color
195. B-Fenton Holly 8 1/2", 3 in 1 bowl, electric iridescence
196. Pumpkin M-Fenton Holly 9", 3 in 1 edge bowl, whew!
197. Stunning Pastel M-Fenton Leaf Chain 9 1/4" plate, as good as these get!
198. Colossal Clambroth-Fenton Orange Tree 9 1/2" plate, awesome!
199. M-Fenton Orange Tree 8" deep, flared, round bowl
200. Rare G-Fenton Thistle 9 1/4" plate, extra nice
201. Superb Pumpkin M-Fenton Captive Rose 8 3/4" bowl
202. Fantastic B-Fenton Captive Rose 8" CRE bowl
203. G-Fenton Captive Rose 8 3/4" low, low, low ICS bowl, could be a turned up edge plate—scarce and beautiful!
204. Soft M-Fenton Persian Medallion rosebowl
205. B-Fenton Holly 7 1/4" JIP, CRE hat, very pretty
206. Radium M-Imperial Fashion 6" rosebowl
207. PO-Northwood Nautilus sugar bowl, signed Northwood
208. Blue Opal-N Double Loop sugar bowl, very scarce and lovely
209. AO-N Dandelion mug, exceptionally nice piece
210. Dark M-Banded Grape mug
211. RARE Sapphire-N Singing Birds mug, blue ribbon piece!
212. Radium Pumpkin M-N Singing Birds mug

213. Mint Green-N Singing Birds mug, what an unusual pastel green color!
214. **Dark M-stippled Robin mug, killer piece**
215. Rare Red Slag-Fenton Orange Tree shaving mug, seriously, it has gold flecks in the glass
216. **Ice B-N Drapery 7", tri-corner bowl, sweet pastels**
217. Rich M-N Poppy Show 9 1/4" plate, great pink highlights
218. **B-N Poppy Show 9 1/4" plate, always in demand**
219. P-N Grape and Cable breakfast set at its finest, raging electric hues
220. **P-N Grape and Cable dresser tray, pretty fuschias and greens**
221. P-N Grape and Cable oval pin tray
222. **P-N Grape and Cable hatpin holder, electric highlights**
223. P-N Grape and Cable candlesticks, 2 times \$
224. **P-N Grape and Cable powder jar with lid**
225. P-N Grape and Cable cologne bottle w/ stopper, multi electric
226. **P-N Grape and Cable cologne bottle w/ stopper**
227. Electric P-Grape and Cable perfume w/ stopper, waaaaaayyyyyyy above average

228. **P-N Grape and Cable 10 pc. master punch set, well matched for color, another great master set!**
229. P-Grape and Cable punch cups, 6 x 8
230. **B-N Rose Show 9 1/2" plate, purple highlights**
231. Vivid M-N Rose Show 9 1/8" plate, impressive iridescence
232. **AO-N Rose Show ruffled bowl, a crowd favorite**
233. AO-N Hearts and Flowers compote, always in demand
234. **M-N Hearts and Flowers compote, luscious pinks, color top to bottom**
235. Pastel M-N Hearts and Flowers 9" PCE bowl, pinks, yellows and blues
236. **Blue w/ Opal rim-Interior Smooth Panel 4 3/4", tri-corner vase, not often seen**
237. P-N Rose Show 9 1/2" plate, magnificent all-over electric iridescence
238. **G-N stippled Strawberry PCE bowl, very difficult to find in this color**
239. Multi Electric B-N stippled Strawberry PCE bowl, equally tough to find and splendid!
240. **Pumpkin M-N stippled Strawberry PCE bowl, loaded with flaming pinks!**

SPECIAL NOTE:

NO SUNDAY CALLS, PLEASE!

Winning Absentee Bidders will be contacted Monday through Wednesday of the week following the Auction!

Thank You!

SEND ALL MAIL TO:

18350 Hunters Ridge Ct.

Boonville, MO 65233

WATCH:  **Web Site: www.AWK-SHN.com**

241. G-N Acorn Burrs 8 pc punch set, glorious blues and pinks cover the bowl and base!

242. **Electric P-Dugan Many Fruits 8 pc punch set, another exceptional punch set!**

243. M-Dugan Persian Garden 6 1/4" plate

244. **M-N Three Fruits 9 1/4" plate**

245. Lav-N Three Fruits Medallion dome base bowl, rainbow iridescence

246. **Champagne-N Strawberry 9" bowl, smooth back, super pretty**

247. M-N Strawberry 9 5/8" plate, dark and lovely

248. **M-N Three Fruits Medallion spat ftd. bowl, nice pastel coloration**

249. Electric P-N Three Fruits Medallion spat ftd. bowl, Tiffany like colors

250. **Awesome Electric P-N stippled Three Fruits 9" plate, the search stops here!**

251. M-N stippled Three Fruits 9" plate, pretty yellow hues

252. **Scarce Sapphire-N round bushel basket, just about the best sapphire example out there**

253. Ice G-N round bushel basket, nice pastels

254. **Knockout Electric B-N round bushel basket, oh my!!**

255. Ultra Rare G w/ smooth handles-N round bushel basket, with striking electric hues

256. **One of a kind Northwood round bushel basket, appears to be aqua opal on first glance, but glows strongly under a blacklight. Beautiful iridescence, likely a unique, one of a kind piece!**

257. A-N eight sided bushel basket, carnival classic!

258. **Blue Opal-N round bushel basket, not iridized**

259. Yellow Vaseline opal-N round bushel basket, very rare

260. **Yellow Vaseline opal-N stippled Grape and Cable bonbon, equally scarce**

261. Custard w/ nutmeg-N round bushel basket

262. **Custard w/ nutmeg-N Fine Cut and Roses rosebowl, scarce plain interior**

263. AO-N Fine Cut and Roses rosebowl, Fancy interior, pastel monster

264. **Dark Ice B-N Fine Cut and Roses rosebowl, Fancy interior**

265. P-Imperial Loganberry vase, an electric screamer top to bottom

266. **Pumpkin M-N large Grape and Cable fruit bowl, head of its class!**

267. Dark Ice G-N large, round 9 3/4" Grape and Cable fruit bowl, sides straight up, loads of pastels

268. **P-N Grape and Cable large covered compote, quite nice**

269. Superb Electric P-Grape and Cable 10 1/2" large ruffled compote

270. **P-N Grape and Cable tobacco jar w/ lid, prongs are good.**

271. M-Starred beer goblets, well matched, 6 x \$

272. **Dark M-Oxbox mug**

273. A-Fenton Persian Medallion/Wreath of Roses punch cups, 2 x \$

274. **Pastel Lav-N Peacock at Fountain punch cups, 4 x \$**

275. Deep B-N Peacock at Fountain punch cup

276. **Deep A-N Peacock at Fountain punch cup**

277. Purple Slag-N Peacock at Fountain punch cups, 2 x \$

278. **P-N Memphis punch cups, 2 x \$**

279. M-N Memphis punch cups, 3 x \$

280. **G-N stippled Grape and Cable punch cups, 4 x \$**

281. B-N Grape and Cable punch cups, dark and super, 2 x \$

282. **Electric B-N stippled Grape and Cable punch cup**

283. G-N Grape and Cable punch cups, 6 x \$

284. **B-Fenton Orange Tree punch cups, 6 x \$**

285. P-Dugan Many Fruits punch cup

286. **W-Dugan Many Fruits punch cup**

287. Scarce B-Fenton Lotus and Grape 9" plate, a toughie!

288. **Incredible G-Fenton Dragon and Lotus collar base 8 1/2" ICS bowl, the glass color is emerald green with magnificent iridescence.**

289. Yellow Vaseline w/ opal tips-Fenton Dragon and Lotus 9" bowl

290. **B-Fenton Dragon and Lotus 8 1/2" ICS bowl, exceptionally nice**

291. Super M-Fenton Pine Cone 7 1/2" plate, extremely rare size and enchanting color

292. **Dark B-Fenton Persian Medallion 9 1/4" plate, multi color gem!**

293. Phenomenal Marigold-Lattice and Grape tumbler

294. **G base w/ marigold overlay-N Grape and Cable tumbler**

295. P-N stippled Grape and Cable tumbler, multi electric

296. **Lav-N Grape and Cable tumbler, electric purples**

297. Pumpkin M-N Grape and Cable tumbler

298. **M-Fenton Apple Tree tumbler**

299. Electric B-Fenton Apple Tree tumbler

300. **Clambroth-N Greek Key tumbler, so scarce!**

301. Electric P-Imperial Fieldflower tumbler

302. **Lovely M-Fenton Orange Tree Scroll tumbler**

303. Pumpkin M-N Grape Arbor tumbler

304. **M Flash-Majestic tumbler**

305. M-Buzz Saw and File 5 3/4" ice tea glass

306. **M-Buzz Saw and File 4 1/4" tumbler, pumpkin**

307. M-Buzz Saw and File 4" juice glass

308. **M-Beaded Spears 5 3/8" tea glass**

309. M-Jain Grapevine and Spikes 5 1/2" tea glass

310. **M-Ribs 5 1/4" tea glass**

311. M-Jain Grape and Palisade 4 1/2" tumbler

312. **Olive G-N Concave Diamond tumbler from tumble up set**

313. Sapphire-N Concave Diamond tumbler from tumble up set

314. **Ruby Flash-Enameled floral decorated tumbler, unique**

315. Pastel AO-N Peacocks bowl at its finest! Breathtaking!!

316. **M-N stippled Peacocks 9" plate, fuschias and blues**

317. Dark B-N stippled Peacocks 9" plate, multi color

318. **M-Imperial Zipper Loop 5" tall finger lamp, 4 1/8" base**

319. Smoke-Imperial Zipper Loop 9 1/2" lamp, 5 1/2" base

320. **M-Imperial Zipper Loop 8 1/2" lamp, 5 1/8" base**

321. Great M-Illinois Soldier and Sailors Home 8" advertising plate, pumpkin

322. **Scarce B-Illinois Soldier and Sailors Home 7 3/4" advertising plate, multi electric**

323. Lav-N Davidson's Society Chocolates 6 1/2" single handgrip advertising plate

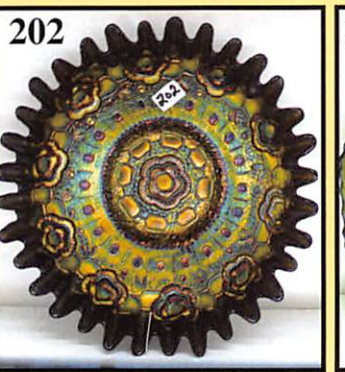
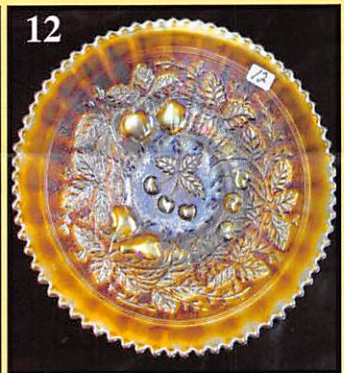
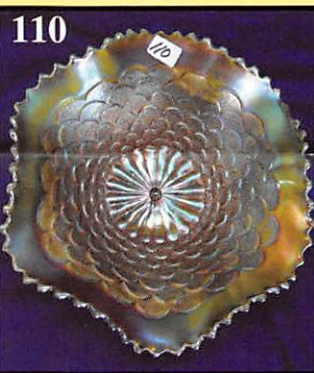
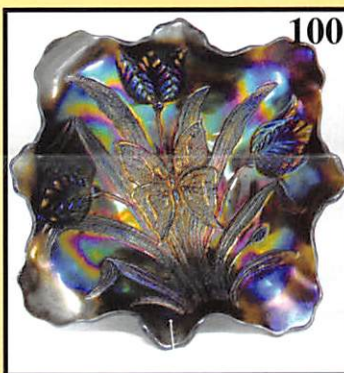
324. **G-Fenton Peacock Tail hat, Central Furniture Co 1910 advertising piece**

325. Luscious Clambroth-Imperial Lustre Rose 11" footed centerpiece bowl

326. **Pink-Dugan Golden Grape 7 1/2" bowl**

Twelve additional carnival glass items will conclude this fine sale.

Call Today To Sell Your Fine Items
660-882-5292 Day
660-882-5283 Evening



FANTASTIC CRYSTAL AUCTION

Saturday- May 14th, 2014

*Friday Preview : May 13th - 12:00 Noon

Held at The Mickey Restaurant

1440 Ashley Road same as Mickey's
Go to Web Site www.awk-shn.com

***** NO BUYERS REMOTE

Open to the Public -
WHATDOYOUWAIT

CARNIVAL GLASS AUCTION

2011 @ 9:00 AM CDT

on - 5:00 PM & 7:30 AM Auction Day

Reichel Auction Gallery

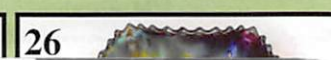
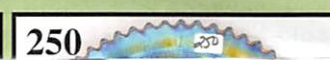
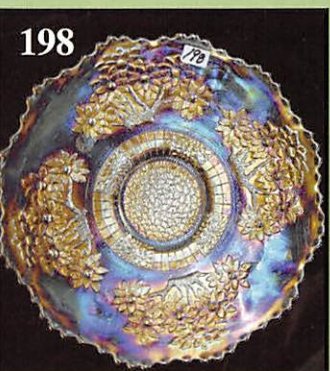
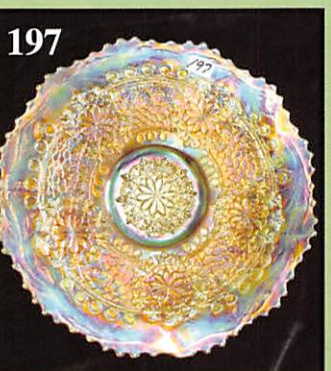
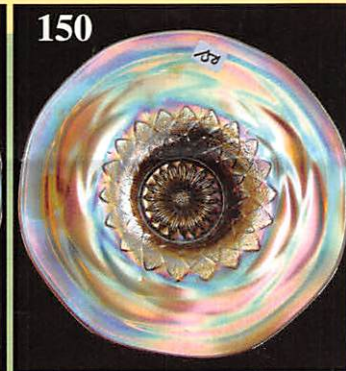
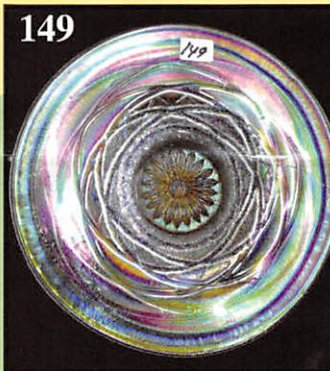
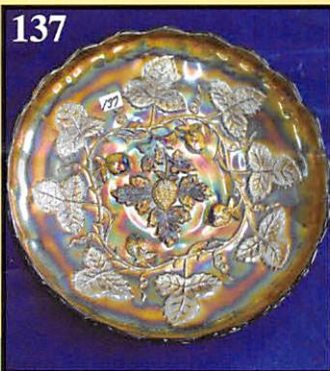
Highway 5 • Boonville, Missouri

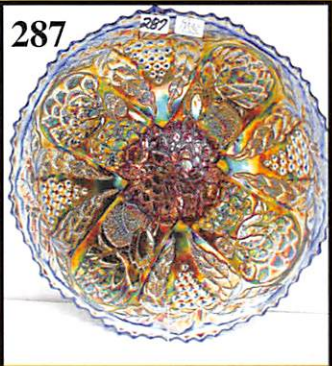
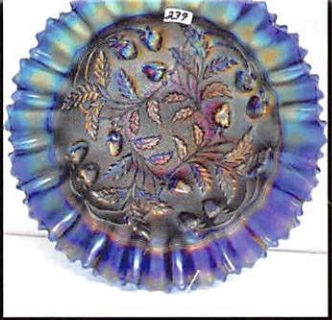
Website for Fantastic Photo Tour

***** PREMIUM *****

You All Come Now !!

*****ANTOGIVEFORIT*****





Make Reservations **EARLY** at one of these local motels:

Days Inn: 660-882-8624
Comfort Inn: 660-882-5317
Super 8: 660-882-2900
Holiday Inn: 660-882-6882

Mickey Reichel Auction Center

1 Mile North of I-70 on Hwy. 5, Exit 101, Boonville, Missouri, 20 Miles West of Columbia, MO on I-70

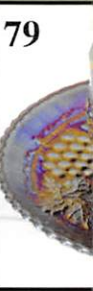
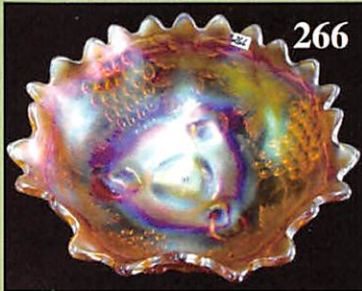


TERMS: Cash or Good Check, VISA and MasterCard accepted.

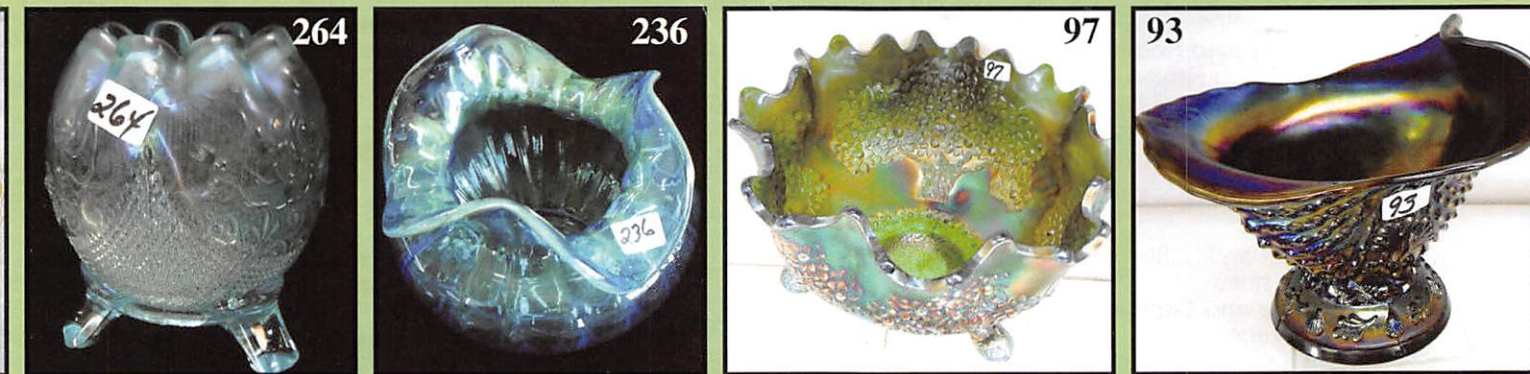


5% Clerking Fee on all purchases except for payment of cash or check.

Proper I.D. required.



***** No return on any items once sold (No Excuses) *****



★★★NO BUYERS PREMIUM★★★

ABSENTEE BID POLICY:

PLEASE NOTE: There is a \$6 handling charge for each successful bid which will be added to the selling price for all write-in bids. This is in addition to the cost of postage, insurance and packing. Your write-in bid will be entered just as if you are present and bidding. **Successful bidders will be notified in 1 to 3 days by the auctioneer (so be sure to include your phone number).** Direct mail bids to Auctioneer Mickey Reichel, 18350 Hunters Ridge Ct., Boonville, MO 65233-2971. Terms: Cash or Check accepted with proper I.D. and Social Security Number and References. Announcements made day of the auction supercede all printed material. Not Responsible for Accidents or Sold Items. **Call in Bids before Auction Welcome!**

☛ Call for additional information: 660-882-5292 days or 660-882-5283 evenings before 9:00 p.m.

FAX: 660-882-5292
(evening hours start FAX transmission after beep)
E-mail: mreichel@AWK-SHN.com
Web Site: www.awk-shn.com

they leave the Auction Center ***
(options)

SEE REVERSE FOR DETAILS