

- _____ 1. Amethyst Northwood Grape and Cable 6" ruffled sauce
- _____ 2. **M-Dugan Double Stem Rose 8" round bowl**
- _____ 3. M-Imp Morning Glory 14 1/2" swung vase, very tall example
- _____ 4. **M-Northwood Flute 13" mid-size vase**
- _____ 5. Russet-Northwood 10 1/2" Thin Rib vase
- _____ 6. **M-Fenton French Knots 6 1/4" ruffled hat, dark and nice**
- _____ 7. M-Fenton Little Flowers 5" round bowl
- _____ 8. **M-Fenton Chrysanthemum/Windmill 10 1/2" ball ftd, ruffled bowl**
- _____ 9. Pumpkin M-Cambridge Inverted Feather ruffled parfait
- _____ 10. **M-Northwood Grape and Cable hat whimsied from tumbler, very pretty**
- _____ 11. M-Imp Colonial lemonade mug
- _____ 12. **Amber-Imperial oval pickle dish**
- _____ 13. M-Northwood Daisy and Plume ftd rosebowl, Blackberry interior
- _____ 14. **M-Imperial Diamond and Sunburst wine glass**
- _____ 15. Fabulous Blue-Northwood Peacock at Fountain water pitcher, interior fracture
- _____ 16. **Blue-Northwood Peacock at Fountain tumbler, electric**
- _____ 17. Blue-Northwood Peacock at Fountain tumbler, also super
- _____ 18. **M-Northwood Springtime tumbler**
- _____ 19. Dark M-Fenton Bouquet tumbler
- _____ 20. **Green-Northwood Singing Birds tumbler, heavy mari-gold iridescence---Cool!**
- _____ 21. G-Cambridge Inverted Feather cracker jar w/ lid, marie chip
- _____ 22. **Luscious G-Northwood Grape and Cable banana boat**
- _____ 23. BA-Fenton 11" Hearts and Flowers CRE centerpiece bowl, contemporary
- _____ 24. **M-Imperial 474 compote, marked IG**
- _____ 25. P-Northwood Grape and Cable Vt. 9" smooth back plate
- _____ 26. **Cherry Red-Fenton Holly 9" ruffled bowl, excellent example!**
- _____ 27. P-Northwood Strawberry 9" plate, great eye appeal
- _____ 28. **B-Fenton Orange Tree 9 1/2" ruffled master berry bowl, colors galore**
- _____ 29. P-Fenton Stippled Rays 10" CRE tri-corner bowl, scarce shape
- _____ 30. **P-Northwood Stippled Rays 10" PCE salad bowl**
- _____ 31. M-Fenton Water Lily 5 1/2" sauce bowl
- _____ 32. **Scarce A-Fenton Three Fruits 9 1/4" plate**
- _____ 33. B-Fenton Orange Tree stemmed sherbet, radium electric
- _____ 34. **Ice G-Northwood Peacocks 9" plate, gorgeous on both sides**
- _____ 35. P-Northwood Star of David and Bows ruffled nut bowl
- _____ 36. **P-Northwood Tree Trunk 13 1/4" mid-size vase, showy electric iridescence**
- _____ 37. G-Fenton Plume Panels 12" vase, super nice
- _____ 38. **Ice B-Northwood Thin Rib 10" vase, scarce color**
- _____ 39. BA-Dugan Lined Lattice 10 1/4" vase, stunning electric
- _____ 40. **P-Northwood Tree Trunk 13" mid-size vase, stupendous color**
- _____ 41. B-Fenton Holly 9 1/4", 3 in 1 edge bowl, neat shape
- _____ 42. **Dark A-Northwood Grape and Cable Vt. PCE bowl, extra nice**
- _____ 43. B-Fenton Wreath of Roses ruffled compote
- _____ 44. **Electric B-Northwood Hearts and Flowers ruffled compote**
- _____ 45. B-Fenton Water Lily ruffled sauce, enticing colors
- _____ 46. **P-Northwood Fruits and Flowers 5 3/4" ruffled bowl, plain back!**
- _____ 47. P-Northwood Grape and Cable 11" ruffled bowl, BW back
- _____ 48. **P-Northwood Grape and Cable 6" ruffled bowl, 4 times \$**
- _____ 49. M-Northwood Grape and Cable spooner, dark and nice
- _____ 50. **Fabulous Pumpkin M-Grape and Cable saucer, try finding a cup to match!**
- _____ 51. P-Northwood Grape and Cable tumbler, deep purple w/ electric hues
- _____ 52. **M-Northwood Grape and Cable large ruffled open compote, lush pinks and blues**
- _____ 53. P-Northwood Grape and Cable creamer
- _____ 54. **Stunning Purple-Northwood Grape and Cable dresser tray, oh my!**
- _____ 55. P-Northwood Grape and Cable powder jar w/ lid
- _____ 56. **Super Purple-Grape and Cable perfume bottle, open bubble on stopper-so what?**
- _____ 57. P-Northwood Grape and Cable cologne bottle, very attractive
- _____ 58. **P-Northwood Grape and Cable pin tray, nice one!**
- _____ 59. P-Northwood Grape and Cable 7 piece water set, always desirable
- _____ 60. **Outstanding G-Northwood stippled Grape and Cable Vt. Old Rose Distillery advertising plate, unbelievable hues-try finding a better one!**
- _____ 61. G-Northwood stippled Grape and Cable Vt. ruffled bowl
- _____ 62. **P-Northwood Grape and Cable candlelamp, complete and well matched**
- _____ 63. P-Northwood Grape and Cable open breakfast sugar
- _____ 64. **B-Fenton Stag and Holly 11" ruffled, ball ftd bowl, well iridized**
- _____ 65. G-Fenton Stag and Holly 8" ICS, spat ftd bowl
- _____ 66. **P-Northwood Three Fruits PCE bowl, loaded with electric hues**
- _____ 67. M-Fenton 2-row Open Edge two sides up John H. Brand advertising hat
- _____ 68. **Dark A-Northwood stippled Three Fruits plate, Rib back, quite nice**
- _____ 69. B-Northwood stippled Three Fruits plate, Rib back, multi electric
- _____ 70. **P-Northwood Grape and Cable banana boat, very pretty inside and out**
- _____ 71. G-Northwood Grape and Cable 11" fruit bowl, gorgeous fuschias inside the bowl
- _____ 72. **B-Northwood stippled and banded Grape and Cable 11" large fruit bowl**
- _____ 73. M-Pyrex #L 63 insulator
- _____ 74. **M-large Corning Pyrex #233 insulator**
- _____ 75. M-Sombrero Pyrex insulator, dated 1942, 10" diameter
- _____ 76. **M-Greek Key lamp shades, signed Nu-Art, 3 times \$**
- _____ 77. P-Northwood Raspberry gravy boat, lovely electric blue highlights
- _____ 78. **M-Fenton Illusion four sides up bonbon**
- _____ 79. B-Fenton Little Flowers 9 3/4" ruffled bowl
- _____ 80. **M-Fenton Vintage small size epergne, always in demand**
- _____ 81. M-Kittens whimsied 2" toothpick or vase
- _____ 82. **Dark, dark M-Imperial Flute toothpick, a keeper**
- _____ 83. Rich M-Fenton Vintage 8 1/2", 3 in 1 edge bowl
- _____ 84. **M-Dugan Question Marks 7" plate**
- _____ 85. M-Fenton Peacock and Grape 9" spat ftd plate
- _____ 86. **M-Fenton Wild Blackberry 9" ruffled bowl**
- _____ 87. Vaseline stretch ashtray, different and delightful
- _____ 88. **M-Dugan Five Hearts whimsey dome compote, very scarce and nice**
- _____ 89. M-Dugan Weeping Cherries 9", ten ruffle bowl, not often seen
- _____ 90. **Pastel M-N Wishbone ruffled, ftd bowl, super yellows!**
- _____ 91. M-Fenton Stag and Holly 8" ruffled, spat ftd bowl
- _____ 92. **White-Dugan Puzzle round, stemmed bonbon, Floral and Wheat exterior**
- _____ 93. A-Fenton Peacock Tail 9 1/2", 3 in 1 edge bowl, great example
- _____ 94. **A-Fenton Little Flowers 10", 3 in 1 edge bowl, lovely color**
- _____ 95. Scarce B-Riihimaki Starburst cuspidor, tough shape to find
- _____ 96. **Aqua-Fenton Leaf Chain 6 1/2" ICS bowl, talk about a scarce color for this pattern**
- _____ 97. M-Imp Zipper Loop 5" tall finger lamp, nice color
- _____ 98. **P-Imp Beaded Bullseye 7 1/2" vase, 5" opening, gorgeous**
- _____ 99. Smoke-Imperial Freefold 11 1/2" vase
- _____ 100. **Extraordinary, Ultra Rare Amber-Imperial Poppy Show vase. Lights out color. Without a doubt the main attraction of this auction!**
- _____ 101. P-Imp Ripple 11 3/4" vase, 3 1/4" vase, electric
- _____ 102. **M-Imp Gothic Arches 14" vase, very scarce and a radium gem**
- _____ 103. Smoke-Imperial Parlor Panels 9" vase, a knockout
- _____ 104. **G-Imperial Loganberry vase**
- _____ 105. Fabulous M-Imp Corn bottle, exquisite color
- _____ 106. **Light Amber-Imp Open Rose 9" plate**
- _____ 107. Dark Amber-Imp Open Rose 9" plate, lots of blues and pinks
- _____ 108. **M-Imp Open Rose 9" plate**
- _____ 109. G-Imp Open Rose 8 3/4" plate, glows lightly
- _____ 110. **Scarce Smoke-Imp Pansy 9 1/2" low ruffled bowl/plate, super nice piece of glass**
- _____ 111. P-Imp Pansy 8 3/4" ruffled bowl, shimmering hues
- _____ 112. **Smoke-Imp Pansy 9" ruffled bowl, killer colors**
- _____ 113. Electric M-Imp Pansy 9" ruffled bowl, colors galore
- _____ 114. **Awesome M-Imp Hattie 10 1/2" chop plate, wall to wall color**
- _____ 115. P-Imp Cobblestone 9 1/4" ruffled bowl, electric as usual

116. P-Imp Star of David ruffled bowl, also electric
117. Electric P-Imp Acanthus 8" round, scalloped bowl, wow is this nice
118. White Opal-Northwood Poinsettia and Lattice ruffled bowl, not iridized
119. Radium A-Fenton Vintage fernery bowl, really spectacular for this pattern
120. Rare Red-Diamond Glass Co. covered bonbon. Plate 57 in stretch book. This one is radium and is only one of a couple known, the other having a more stretch effect
121. M-Fenton Lattice and Grape 7 piece water set, very nice
122. B-Fenton Lattice and Grape tankard water pitcher
123. G-Fenton Paneled Dandelion 7 pc water set, a very nice find
124. M-Fenton Orange Tree 7 pc water set, pieces well matched for color
125. P-Northwood Oriental Poppy tankard water pitcher, a winner and comes w/ one matching tumbler
126. P-Northwood Oriental Poppy tumblers, 2 times \$
127. P-Northwood Acorn Burrs 7 piece water set, a very desirable set
128. M-Fenton Wine and Roses 6 piece cider set, seldom seen
129. P-N Grape and Cable 7 pc water set, pretty set
130. Dark M-Imp Grape 7 pc water set
131. M-Fenton Mikado giant ruffled compote
132. B-Fenton Stag and Holly ball ftd, deep fruit bowl, great item
133. BA-Northwood Tree Trunk 11" vase, not iridized, unusual and neat.
134. Green (Vaseline)-Northwood Tree Trunk Vt. 9 1/4" vase, the base glows as seen in photo
135. Ice G-N 10" Thin Rib vase
136. Rare Violet-N Tree Trunk 10" vase, how many have you seen with this base color?
137. G-N Thin Rib 8" vase, just as pretty as it can be
138. BA-Dugan Many Ribs 8" vase, electric and rare
139. W-Dugan Target 11" vase, great pastels
140. B-Dugan Spiralex 11 1/2" vase, radium and lovely
141. B-Fenton Knotted Beads 10" vase, pretty
142. Dark M-Dugan Lined Lattice 9 3/4" vase, impressive pastels
143. P-Fenton Fine Rib 12 1/4" vase
144. P-N Fine Rib 9 1/2" vase, fiery amethyst sides that almost looks red
145. Ice G-N round bushel basket
146. Electric P-Pansy nappy, wonderful color
147. P-Imp Scroll Embossed 7 1/2" ruffled bowl, electric, starred base
148. B-Fenton Two Fruits divided bonbon
149. Radium A-Fenton Vintage fernery bowl, spectacular
150. B-Fenton Butterfly and Berry master berry bowl, loads of color
151. B-N Fruits and Flowers 7 1/4" ruffled bowl, nice one
152. B-Fenton Leaf Chain 9" ruffled bowl, exceptionally nice
153. B-N stippled Three Fruits Medallion spat ftd, ruffled bowl, electric highlights
154. A-Four Flowers 8 1/2" round, flared bowl w/ Soda Gold exterior. Scarce shape and color.
155. M-N stippled Three Fruits ruffled bowl
156. P-Dugan Puzzle round, stemmed bonbon, Floral and Wheat exterior. Mind blowing color!
157. M-N Singing Birds water pitcher. The BEST one for color I've seen, but it's cracked.
158. M-N Singing Birds tumblers, 4 times \$
159. M-Imp Fieldflower 7 piece water set, incredible color on this set
160. G-N Grape and Cable water pitcher, emerald highlights
161. G-N Grape and Cable tumbler
162. Electric B-N Peacock at Fountain water pitcher, whew!
163. Electric B-N Peacock at Fountain tumbler
164. G-Fenton Fluffy Peacock 7 piece water set, beautiful set!
165. P-Imp Diamond Lace 7 piece water set, fabulous matching set I guess!!!!
166. M-N Grape Arbor tankard water pitcher
167. P-N Acorn Burrs water pitcher
168. Red Amberina-Imperial Fieldflower water pitcher, marked IG
169. Red-Fenton Blackberry Spray 6 1/2" ruffled hat
170. Red w/ swirls-Fenton Orange Tree standard size mug
171. Red-Fenton 2 row Open Edge 5 3/4" two sides up hat. Way above average iridescence.
172. M-Fenton Orange Tree 9 1/4" plate, w/ trunk center
173. Scarce B-Fenton Plaid 8 1/2" ICS bowl AND it's pretty!
174. Great M-Fenton Captive Rose 9 1/4" plate, excellent color
175. B-Fenton Captive Rose 9 1/4" plate, equally nice as the marigold one
176. M-Fenton Persian Medallion 9" plate, scarce item, plain back
177. A-Fenton Concord 8 3/4" ruffled bowl, collector favorite
178. G-Fenton Holly 9 1/2" plate, top of the line piece
179. B-Fenton Holly 9 1/2" plate
180. Rare Moonstone-Fenton Holly 9" ruffled bowl, factory open bubble on base rim
181. Pastel Amber?-Fenton Holly 8 3/4" ruffled bowl, odd base color
182. Amber-Fenton Holly 9" ruffled bowl, great iridescence
183. Ice G-N round bushel basket
184. Ice G Vas-Fenton 2 row Open Edge ruffled basket, glows like crazy
185. Ice B-N Fine Cut and Roses rosebowl w/ Fancy interior, super pastels
186. B-Fenton Lattice and Grape tumblers, 6 times \$ and they are all real, real nice
187. P-N Peacock at Fountain spooner, strikingly beautiful
188. Superb G-Fenton Peacock and Grape 9" ruffled bowl
189. P-Dugan Folding Fan 7" ruffled, crimped edge compote
190. Ice B-N Drapery 7" tri-corner bowl, fabulous pastels
191. Lime G-N Drapery 8 1/2" vase, nice
192. W-N Daisy and Drape vase, cupped in top
193. AO-N Four Pillars 12" vase, normal feet
194. Lime G-N Corn vase w/ stalk base
195. A-Fenton Rustic 19 1/2" plunger base funeral vase, 8 1/2" opening, color top to bottom
196. P-N Tree Trunk 20 1/2" plunger base funeral vase, radium and nice
197. Electric P-N Tree Trunk 9 1/2" vase, find one better!
198. G-Fenton Long Thumbprint Hobnail 11 1/2" vase
199. Citrine-N Thin Rib 10 1/2" vase
200. P-N ribbed Tornado 6" vase, desirable and delightful
201. AO-N Four Pillars 10 1/2" vase, buffed foot
202. W-Dugan Lined Lattice 9 1/2" vase, rainbow pastels
203. AO-N Daisy and Drape flared top vase
204. PO-Dugan Many Ribs JIP 6" vase, with candy ribbon edge. Tough little vase!
205. B-Fenton Fine Rib 17" vase, tulip top
206. P-Fenton #916 16" vase, tons of color on this vase
207. P-N Grape and Cable Vt. 9" plate, BW back
208. W-N Peacocks 9" plate, Rib back, blue highlights
209. Ice G-N Peacocks 9" plate, Rib back
210. P-N Peacocks 9" plate, Rib back
211. AO-N Peacocks ruffled bowl, lots of color on the front
212. AO-N stippled Three Fruits ruffled bowl, Rib back
213. P-N Three Fruits 9" plate, BW back
214. M-N stippled Three Fruits 9 1/4" plate, pretty center on this plate
215. M-Fenton Peacock at Urn 9" plate
216. W-Fenton Peacock at Urn 9 1/2" plate, nice blues, purples and yellows
217. P-N Memphis 8 piece punch set, complete with electric hues, great set
218. P-Imp Grape 8 piece punch set, punch sets are hot, hot, hot!
219. Frosty W-Dugan Many Fruits ruffled 8 piece punch set, highly desirable
220. P-Mlbg Multi-Fruits and Flowers 8 piece punch set, nicely matched and a dandy
221. G-N Acorn Burrs 8 piece punch set, way above average for color
222. P-N Peacock at Fountain 9 piece punch set, exquisite color
223. P-N Memphis 9 piece punch set, always in demand
224. P-N Grape and Cable 12 piece punch set, fantastic bowl---makes a BIG statement
225. P-N Good Luck ruffled bowl, Rib back
226. Awesome P-N Good Luck PCE bowl, check out the color on this one
227. G-N Wide Panel epergne, outstanding condition, the lilies bases are nearly perfect
228. PO-Dugan Fishnet ruffled epergne, well matched set
229. Lav-Fenton Blackberry Open Edge 5 1/2", deep ruffled basket
230. Scarce Powder B-Fenton Blackberry Open Edge 7" ruffled basket

- 231. A-Fenton Autumn Acorns 9" ruffled bow, about as nice as these come
- 232. **G-Fenton Captive 9" low, low, round bowl, darn near a plate!**
- 233. Radium M-Fenton Holly 8" nut bowl, neat finish and shape
- 234. **M-N Peacocks ruffled bowl, unusual finish-see photo**
- 235. Super Pastel M-N Peacocks ruffled bowl, loaded with pastels
- 236. **Red Amberina-Fenton Orange Tree standard shaving mug**
- 237. G-Fenton Orange Tree standard shaving mug, scarce color
- 238. **Unreal B-Fenton Butterfly and Berry hatpin holder, off the charts color, epoxy on one foot**
- 239. Gorgeous W-Dugan Roundup 8 3/4" low ICS bowl, a great example
- 240. **P-Dugan Apple Blossom Twigs 9" very low ruffled bowl, great eye appeal**
- 241. P-Dugan Lattice and Points 3 3/4" ruffled vase. Stunning inside and out
- 242. **Honey Amber-Dugan Wreath of Roses rosebowl, most unusual color**
- 243. G-Fenton Blackberry Open Edge ruffled basket, very pretty
- 244. **B-Fenton Bud Vase whimsey, two sides up, scarce and lovely**
- 245. M-Fenton Bud Vase whimsey, square or four sides up, rare shape

- 246. **G-N Tree Trunk 11" vase, gorgeous bronze iridescence**
- 247. Dark M-Imperial Rococo vase
- 248. **Smoke-Imp Rococo vase, also a stunner**
- 249. B-N Fruits and Flowers 7 1/2" ruffled bowl, electric hues
- 250. **Odd Purple-Four Flowers Variant 9 1/2" plate, ground base, startling iridescence**
- 251. Electric B-N Grape and Cable bonbon
- 252. **G-N stippled Grape and Cable bonbon, enticing coloration**
- 253. Dark M-Fenton Thistle banana boat, beautiful piece
- 254. **Pumpkin M-N Fruits and Flowers 7 3/8" plate-fantastic color**
- 255. M-Fenton Pine Cone 6" saucer shape plate
- 256. **Electric B-Fenton Peacock at Urn 9 1/2" plate**
- 257. M-Fenton Peacock at Urn 8 3/4" ruffled bowl, pumpkin color
- 258. **PO-Dugan Soutache 9" plate with oddly whimsied edge**
- 259. P-N Grape and Cable 10 1/2" master ICS bowl, gorgeous electric iridescence
- 260. **Dark P-N stippled Strawberry 9" ruffled bowl, electric highlights**
- 261. G-Fenton Peacock and Grape 8 1/4" ICS bowl, alluring blues
- 262. **B-N Good Luck ruffled bowl, very colorful iridescence**
- 263. P-N Good Luck ruffled bowl, BW exterior
- 264. **G-N Acorn Burrs sugar bowl w/ lid. Talk about pretty!!!**

SPECIAL NOTE:

NO SUNDAY CALLS, PLEASE!

Winning Absentee Bidders will be contacted Monday through Wednesday of the week following the Auction!

Thank You!

SEND ALL MAIL TO:

18350 Hunters Ridge Ct.

Boonville, MO 65233

WATCH:  **Web Site: www.AWK-SHN.com**

265. M-Imperial Lustre Rose complete 4 pc. table setting
266. **W with gold trim-N Peacock at Fountain 4 pc. table setting, small chip on base of spooner, otherwise an outstanding set**
267. B-Fenton Butterfly and Berry sugar w/ lid, creamer and butter dish w/ lid. Great color on all the pieces and sells as a set.
268. **P-N Grape and Cable hatpin holder, pretty all the way around**
269. G-N Grape and Cable hatpin holder, desirable color
270. **P-N Town Pump, damage free and very colorful**
271. AO-N round bushel basket, butterscotch
272. **Superb M-N Fruits and Flowers stemmed bonbon**
273. B-Fenton Dragon and Lotus 9" ruffled bowl
274. **Dark G-Fenton Holly 8" ICS bowl, very nice**
275. Pumpkin M-Fenton Orange Tree fruit bowl
276. **BA-Dugan Butterfly and Tulip 12 1/2" square bowl, killer electric highlights**
277. Blue Opal-N Double Loop sugar bowl, wear in center
278. **A-Dugan Cherries 6 1/2" CRE plate, super**
279. M-Fenton Melon Rib fan vase, always seen as stretch, here's the first carnival example we've seen!
280. **RARE Pastel Blue Violet-Dugan Double Stem Rose ruffled bowl. You HAVE to have this color if you collect Dugan, when will you ever see another one this color?**
281. **RARE Vaseline-Mlbg Strawberry Wreath compote with blank leaf. One of maybe two known?**
282. G-Mlbg Blackberry Wreath 10 1/2" ruffled bowl, beautiful satin
283. P-Mlbg Whirling Leaves 10", ruffled bowl, pretty satin finish
284. **P-Mlbg Peacock and Urn 10" ICS master bowl, great color on the bird!**
285. P-Mlbg Swirled Hobnail cuspidor, colorful and collectible
286. **G-Mlbg Grape Wreath Vt. 9", 3 in 1 edge bowl, splendid radium finish**
287. A-Mlbg Rosalind Variant 9 1/4" ruffled bowl. Scarce size and nice
288. **A-Mlbg Little Stars 8" ruffled bowl, very pretty satin colors**
289. P-Mlbg Strawberry Wreath 9" square bowl, fantastic radium finish
290. **G-Hobnail Variant 12 1/4" mid-size vase**
291. P-Hobnail Variant 12 1/4" mid-size vase
292. **Rare Vaseline-Fenton Holly 7 1/2" nut bowl. Truly scarce and radium**
293. Awesome M-N Drapery rosebowl dripping with pinks and blues
294. **P-N Drapery rosebowl, electric highlights and squarish, smooth ruffles on top, wear in center**
295. G-Leaf and Beads nut bowl with Sunflower interior, very colorful
296. **Renninger B-N Leaf and Beads rosebowl, very scarce color**
297. BA-N Leaf and Beads rowebowl w/ Sunflower interior, electric hues on exterior
298. **P-N Beaded Cable rosebowl**
299. M-N Beaded Cable rosebowl
300. **Spectacular AO-N Leaf and Beads rosebowl**
301. Electric P-N Good Luck PCE bowl, super
302. **Ice G-N Grape and Cable banana boat, lots of blue highlights**
303. G-N stippled Grape and Cable Vt. 9 1/4" flat plate and enchanting colors
304. **Light M-N stippled Good Luck ruffled bowl**
305. M-N Peacock at Urn 10" master IC bowl, attractive
306. **B-Fenton Captive Rose 9 1/4" plate, pretty**
307. A-Fenton Captive Rose 9 1/4" plate, colorful
308. **Scarce Aqua-Imp Ripple 11 3/4" vase, much prettier than the average aqua Ripple**
309. Super M-Imp Beaded Bullseye 8" vase
310. **Pumpkin M-N Drapery 7" vase**
311. Blue Opal-N Tree Trunk 10" vase, not iridized, great opal on this piece
312. **P-Dugan Heron mug**
313. PO-Dugan Ski Star 8 1/2" single handgrip plate
314. **M-Fenton Stream of Hearts ruffled compote**
315. Sapphire-Fenton 2 row Open Edge 5 1/2" ruffled basket, scarce color
316. **Red-Fenton 2 row Open Edge 5 1/2" 2 sides up basket**
317. Red-Fenton 2 row Open Edge 6 1/4" JIP basket
318. **B-Fenton 2 row Open Edge 6" ruffled basket**
319. Aqua-Fenton 2 row Open Edge 5 1/4" ruffled basket
320. **W-Dugan Puzzle banana shape stemmed bonbon**
321. Ice B-N Poppy Show ruffled bowl
322. **Super B-N Poppy Show 9 1/8" plate, electric all the way**
323. Ice G-N round bushel basket, nice pastels on the interior, heat check in handle
324. **Ice G-N Peacocks 9" plate, great pastels**
325. P-N Three Fruits 9" plate
326. **B-Fenton Peacock at Urn 9 1/4" plate, great color on bird**
327. Royal Blue-Fenton 2 row Open Edge ruffled basket
328. **Red Slag-Fenton Acorn 6 1/2" nut bowl, scarce color and shape**
329. P-Fenton Autumn Acorns 8", 3 in 1 edge bowl
330. **M-Illinois Soldiers and Sailors Home advertising plate, way above average**
331. Postcard of Admin. Building, Soldiers and Sailors Home, Quincy, Ill, dated 1912, neat go-with to accompany your plate!
332. **Outstanding Ice Blue-N Hearts and Flowers ruffled bowl, the kind of color we're all looking for!**
333. Deep P-Dugan Beaded Shell mug
334. **P-Dugan Grape Delight rosebowl, electric highlights**
335. M-Fenton Kittens whimsied vase, square top, 2 1/4" tall
336. **G-N Fine Cut and Roses 7" ruffled bowl, quite nice**
337. Sapphire stretch-N #658 7" candlesticks, pair
338. **Sapphire-N Leaf Columns 10 1/2" vase, w/ incredible, colorful radium finish**
339. Dark M-N Rose Show 8 3/4" ruffled bowl, normal chips of roses
340. **Splendid Ice Green Opal-N Rose Show 9" ruffled bowl, opal on roses, superb blue hues**
341. Ice B-N Peacock at Urn 10 1/2" master ice cream bowl, chip on tip
342. **Pastel AO-N Hearts and Flowers ruffled compote**
343. Pastel AO-N Hearts and Flowers ruffled compote, this and the previous one are two of the prettiest AO compotes you will ever see. Slightly different iridescent treatments, which is your favorite?
344. **Scarce G-N Nippon PCE bowl, BW back, so pretty!**
345. P-N Grape and Cable centerpiece bowl w/ turned in tips. Lots of color on this bad boy!
346. **A-Fern Brand Chocolates two sides up or card tray advertising plate, great color**
347. P-N Grape and Cable Vt. plates, all with smooth backs. These all were together in an original box and the owner threw the box away!! As fine a group of these as you are likely to find, each slightly different, ALL have mesmerizing color. Choice: A,B,C,D,E,F, although I would want them all!!!!
348. **Ice Blue-N Grape and Cable dresser tray. Spectacular color and doubtless the best one we've seen w/ magnificent pastel colors.**
349. RARE G-N Grape and Gothic Arches butter dish w/ lid. So rare, the table set pieces are listed only as "known" and this one is magnificent.
350. **BA-Triad hatpin**
351. BA-Moire Beetle hatpin
352. **BA-Top O' the Morning hatpin**
353. BA-Big Butterfly hatpin
354. **BA-Six Plums hatpin**
355. BA-Dragonflies hatpin
356. **BA-Hollow Dart hatpin**
357. BA-Tufted Throw Pillow hatpin
358. **W-Dugan Persian Garden/Pool of Pearls 6 1/4" plate**
359. Scarce W-N Grape and Cable saucer, great pastels
360. **M-N Peacock at Urn 5 1/2" ICS bowl, pretty**
361. P-N Peacock at Urn 5 1/2" ICS bowl
362. **P-N Grape and Cable single candlestick**
363. Metal candlelamp frame
364. **P-Dugan Question Marks 6 1/2" CRE plate, stemmed**
365. P-N Beaded Cable rosebowl, rayed interior
366. **B-Fenton Peacock at Urn ruffled compote**
367. B-N Peacock at Fountain tumbler
368. **M-N Peacock at Fountain tumbler**
369. P-N Peacock at Fountain tumbler
370. **Approximately 20 more carnival glass items to close out this wonderful auction**

 **Call Today To Sell Your Fine Items**
660-882-5292 Day
660-882-5283 Evening

NEW YEARS 20th CARNIVAL

Saturday - January 8

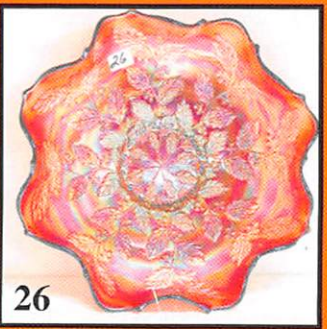
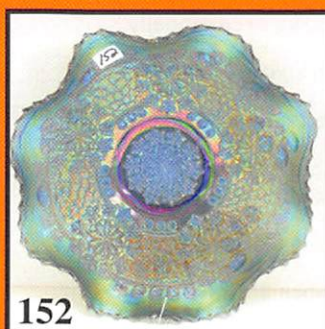
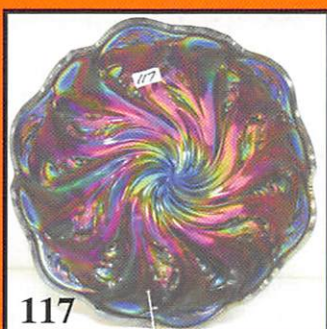
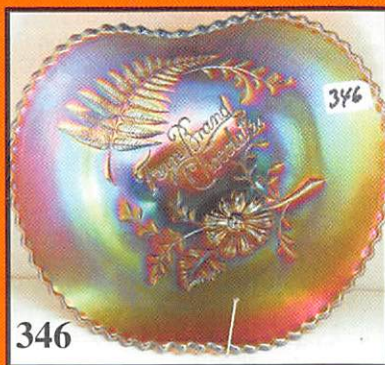
Friday Preview : Jan. 7th - 12:00 Noon
in Case of BAD weather Saturday. >> Make sure you are here!

Held At The Mickey Reichel Auction Gallery

1440 Ashle
Boonville, MO

Inside the Mickey Reichel Auction Gallery,
Hwy. 5, Exit 101, Boonville, MO - 20 Miles West of Springfield

Go to Web Site www.awk-shn.com



GLASS EXTRAVAGANZA

3rd, 2011 @ 9:00 am

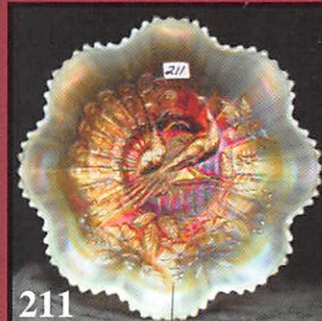
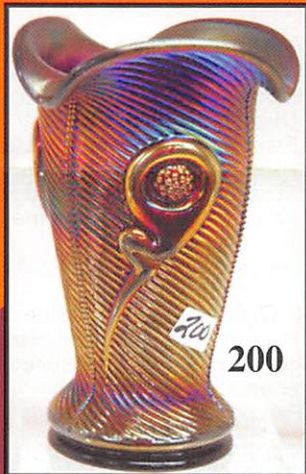
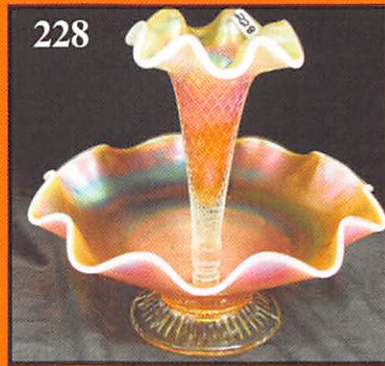
on - 5:00 PM & 7:30 AM Auction Day

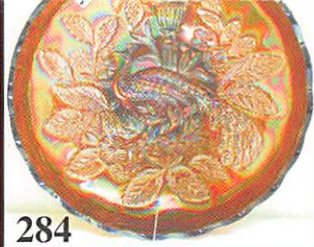
make up day Sunday, January 10th, 9:00

Michel Auction Gallery

Highway Road
MO 65223

Boonville, MO, 1 Mile North of I-70 on
10 Miles West of Columbia, MO on I-70
Room for fantastic photo tour

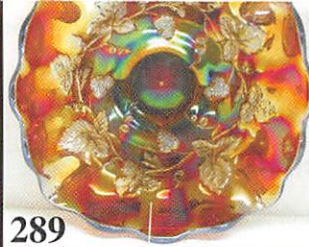




284



287



289



305



321



150



120



60



146



347



159



224



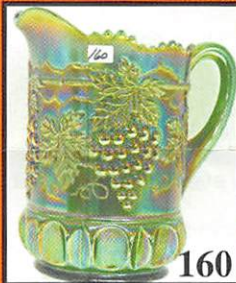
241



258



285



160



345



52



72



88



164



165



123



223



222

Make Reservations **EARLY** at one of these local motels:

Days Inn: 660-882-8624
Comfort Inn: 660-882-5317
Super 8: 660-882-2900
Holiday Inn: 660-882-6882

Mickey Reichel Auction Center

1 Mile North of I-70 on Hwy. 5, Exit 101, Boonville, Missouri, 20 Miles West of Columbia, MO on I-70

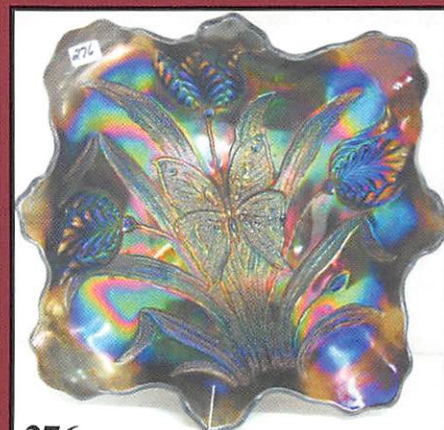


TERMS: Cash or Good Check, VISA and MasterCard accepted.



5% Clerking Fee on all purchases except for payment of cash or check.

Proper I.D. required.



276



348

***** No return once they leave Center (No Exce**



★★★NO BUYERS PREMIUM★★★
ABSENTEE BID POLICY:
PLEASE NOTE: There is a \$6 handling charge for each successful bid which will be added to the selling price for all write-in bids. This is in addition to the cost of postage, insurance and packing. Your write-in bid will be entered just as if you are present and bidding. **Successful bidders will be notified in 1 to 3 days by the auctioneer** (so be sure to include your phone number). Direct mail bids to Auctioneer Mickey Reichel, 18350 Hunters Ridge Ct., Boonville, MO 65233-2971. Terms: Cash or Check accepted with proper I.D. and Social Security Number and References. Announcements made day of the auction supercede all printed material. Not Responsible for Accidents or Sold Items. **Call in Bids before Auction Welcome!**

☛ Call for additional information: 660-882-5292 days or 660-882-5283 evenings before 9:00 p.m.

FAX: 660-882-5292
 (evening hours start FAX transmission after beep)
 E-mail: mreichel@AWK-SHN.com
 Web Site: www.awk-shn.com

on any items
 the Auction
 options) * * *

SEE REVERSE FOR DETAILS