

1. Blue Wreathed Cherry Toothpick Holder
2. **Fenton Holly small ruffled compote, marigold**
3. Marigold Tree Bark single candlestick
4. **Purple Northwood "Plain Jane" ruffled compote**
5. Imperial Premium 8 1/2" single candlestick
6. **Marigold novelty perfume atomizer, 3" tall, mkd. Made in USA**
7. Dark marigold 7" tall perfume atomizer, likely DeVilbiss
8. **Polo Player marigold ashtray with match holder, nice!**
9. Northwood Daisy and Plume stemmed rosebowl, marigold
10. **Marigold Imperial Shell and Sand 7 1/2" round, scalloped bowl, very pretty**
11. Lime Green Interior Rib ruffled compote, marigold overlay
12. **Scarce Horehound Northwood Grape Leaves 8 3/4" ruffled bowl, good one!**
13. Jeanette glass butterfly pin dish, blue and pink, not iridized, neat item
14. **Blue Fenton Strawberry bonbon**
15. Vas Opal TCGC souvenir perfume bottle with stopper, made by Gibson, lovely!
16. **Dark Marigold Fenton Waterlily and Cattails 3" whimsied vase**
17. Green Fenton Coin Dot 9 1/2" ruffled bowl
18. **Purple Imperial Windmill 8" ruffled bowl, stunning electric blues**
19. Purple Imperial Grape 9" low ruffled bowl/plate
20. **Purple Imperial Heavy Grape 8" plate, electric all the way**
21. Smoky Blue Fenton Water Lily 6" footed, ruffled berry bowl
22. **Marigold Fenton Little Fishes 6" footed, ruffled bowl**
23. Marigold Fenton Panther 6" footed, ruffled bowl
24. **Purple Imperial Scroll Embossed 9" plate, electric blues and purples, starred base**
25. Electric Purple Imperial Grape 5 pc. Water set, as nice as you can get
26. **Blue Opal Westmoreland Daisy Wreath 8 1/2" round, scalloped bowl**
27. Amethyst Fenton Thistle 9" ruffled bowl
28. **Marigold Fenton Plaid 9" ruffled bowl**
29. Green Fenton Vintage 10 1/2" ruffled bowl, fabulous example
30. **Blue Fenton Cherry Circles 9" two sides up bonbon**
31. Amethyst Fenton Vintage 9", 3 in 1 bowl
32. **Dark Marigold Fenton Stag and Holly giant rosebowl**
33. Green Fenton Peacock Tail 2 sides up bonbon
34. **Green Fenton Coral 9" ruffled bowl, scarce and underrated**
35. Powder Blue Fenton Little Flowers 6" ICS bowl, heavy marigold overlay
36. **Rich Marigold Fenton Chrysanthemum/Windmill 9 1/2" fruit bowl**
37. Green Fenton Dragon and Lotus 8", ruffled, spat ftd. bowl
38. **Lime Green Westmoreland Pearly Dots rosebowl, marigold overlay, scarce**
39. Green Fenton Captive Rose 9" ruffled bowl
40. **Scarce Amethyst Fenton Peacock and Grape 8 3/4" ruffled bowl, super nice**
41. Amethyst Dugan Question Marks stemmed bonbon
42. **Red Fenton 2 Row Open Edge 6" JIP basket**
43. Blue Fenton Garland rosebowl, dazzling color
44. **Royal Blue Fenton Ribbon Tie 9", 3 in 1 bowl**
45. Marigold Fenton Stream of Hearts ruffled compote
46. **Blue Fenton Feather Stitch 9 1/4" ruffled bowl, scarce and nice**
47. Marigold Fenton Kitten card tray shape 4 3/4" dish, great strike and color
48. **Lovely marigold Fenton Peter Rabbit 9" ruffled bowl, rare and desirable**
49. Florentine Green pastel swan salt, glows!
50. **Rare Peach Opal pastel swan salt**
51. Rich marigold pastel swan salt, scarce
52. **Awesome Purple pastel swan salt**
53. Ice Green Vaseline pastel swan salt
54. **Celeste Blue pastel swan salt, great iridescence**
55. Marigold Woodlands 5" vase, good color for one of these
56. **Marigold Dugan 9" Beauty bud vase**
57. Marigold Dugan 8 3/4" Beauty bud vase
58. **Green Vaseline Daisy Squares CRE stemmed rosebowl, unusual top and it glows**
59. Blue Fenton Heart and Vine 9" ruffled bowl
60. **RARE Celeste Blue Fenton Grape and Cable 8", ball footed bowl, seldom offered**
61. Green Fenton Stag and Holly spatula footed bowl, very pretty
62. **Blue Fenton Horse Medallion rosebowl, sweet radium finish**
63. Blue Fenton Pine Cone 6 1/4" plate, superb color
64. **Electric Blue Fenton Captive Rose 8 1/2", 3 in 1 edge bowl, find one better!**
65. Green Fenton Concord 8 1/2", 3 in 1 edge bowl, awesome blues!
66. **Blue Fenton Lions 7" ICS bowl, sharp strike and great iridescence**
67. Stunning Cobalt Blue Fenton Little Flowers 10" ruffled bowl, top shelf piece
68. **Purple Northwood 10 1/2" Thin Rib vase, striking colors**
69. Marigold Prism and Daisy Band 6" vase
70. **Marigold Jain 9 3/4" Fish vase**
71. Pumpkin Marigold Imperial Ripple 9" vase
72. **Purple Dugan Twigs 4" vase, CRE top, tough piece to find**
73. Electric Purple Imperial Mini Morning Glory 4 3/4" vase
74. **Marigold Classic Arts 6" vase, always in demand**
75. Peach Opal Dugan Wide Rib 6" vase, pinched in
76. **Marigold Tree Bark water pitcher**
77. Celeste Blue stretch candy dish, no lid
78. **MMG Phoenix Glass Dewberry covered compote**
79. MMG Phoenix Glass Dewberry covered sugar
80. **MMG Phoenix Glass Dewberry creamer, beautiful blue iridescence**
81. Peach Opal Nautilus creamer, extra nice
82. **Pastel Peach Opal Honeycomb rosebowl**
83. Purple Dugan Victorian 11 1/2" ruffled bowl, scarce pattern
84. **Peach Opal Dugan Dogwood Sprays deep compote-shaped bowl**
85. Peach Opal Dugan Single Flower Framed 7 3/4", CRE, single hand grip bowl
86. **Peach Opal Dugan 9", ten ruffle Raindrops bowl**
87. Peach Opal Dugan Fanciful 9" low ruffled bowl/plate
88. **Peach Opal Dugan Ski Star/Compass 11" ruffled bowl, chip on marie**
89. Peach Opal Dugan Apple Blossom Twigs 9", 3 in 1 high crimp bowl, look at the opal!
90. **Peach Opal Dugan Heavy Web 11 1/4" flared, scalloped bowl, not often seen and nice!**
91. Purple Dugan Cherries footed, ruffled bowl
92. **Sapphire Dugan Double Stem Rose 10 ruffle bow, extremely scarce color and superb**
93. Purple Dugan Grape Delight nut bowl, very colorful w/ excellent feet
94. **Purple Dugan Fishnet single lily epergne, 3 in 1 edge on base**
95. BA Dugan Bells and Beads 7" ruffled bowl, multi electric
96. **White Dugan Roundup 8 3/4" ICS bowl, lovely pastels**
97. Purple Dugan Thin Panels 5 3/4" JIP vase, startling color
98. **BA Dugan Six Petals 8" ruffled bowl, exquisite**
99. Purple Dugan Flowers and Frames dome footed bowl
100. **Deep Purple Dugan Farmyard 3 in 1 bowl, electric blues deluxe. Prize piece in the sale and arguably the best one out there.**
101. Marigold Dugan Pony 8 1/2" ruffled bowl
102. **Very Scarce Lavender Dugan Constellation ruffled compote, awesome inside and out**
103. Exceptional Marigold Double Diamond tumble up set, radium and achingly beautiful
104. **Purple Northwood Tree Trunk 7" squatty vase, wide top and wonderful color**
105. Rare Blue Northwood 10 1/4" Diamond Point vase, multi electric
106. **Red Imperial Floral Optic 9" round, flared bowl—great color**
107. Amethyst Northwood Stippled Rays 9" ruffled bowl, very colorful
108. **Amethyst Northwood Star of David and Bows nut bowl**
109. White Dugan Leaf Rays nappy
110. **Marigold Fruits and Flowers Variant 7 1/2" bowl w/ stippled background and leaf center, scarce!**
111. White Fenton Leaf Chain 9" ruffled bowl, tip flake
112. **Olive Green Northwood Dandelion mug, unusual color**
113. Electric Purple Northwood Singing Birds mug
114. **Amethyst Northwood Singing Birds mug, vivid electric iridescence**
115. Blue Northwood Singing Birds mug, multi electric
116. **Marigold Fenton Kittens 4 1/2" two sides up plate**
117. Amethyst Northwood Grape and Cable 6" single hand grip plate
118. **Amethyst Fenton 11 1/2" Diamond and Rib vase**
119. Marigold Northwood Singing Birds mug, dark and nice
120. **Purple Northwood Good Luck ruffled bowl, multi electric**
121. Pastel Marigold Northwood Good Luck ruffled bowl, quite pretty
122. **Green Fenton Lotus and Grape 6" round, footed sauce, scarce color**
123. Purple Imperial Diamond Lace 10" ruffled bowl, gorgeous
124. **Marigold Fenton Holly 7", 2 sides up hat**
125. Marigold Grape Arbor tankard water pitcher
126. **Marigold Dugan Persian Garden 6 1/2" plate**
127. Marigold Fenton Two Flowers rosebowl, scarce
128. **Marigold Fenton Two Flowers 10" ruffled bowl, pumpkin**
129. Marigold Fenton Two Flowers 9 1/2" footed fruit bowl
130. **Marigold Fenton Two Flowers 8 3/4" ruffled bowl w/ scarce collar base**
131. Marigold Imperial Smooth Panels 4 1/2" vase, 5" opening, pastel
132. **Marigold Imperial Smooth Panels 13 3/4" funeral vase, 4 1/2" base, 6 3/4" opening-opal tinted base**
133. Marigold Fenton Fine Rib 16 1/2" vase
134. **Marigold Imperial Freefold 12 1/4" vase**

135. Marigold Imperial Mini Morning Glory 6 1/2" vase
136. Marigold Northwood Flute 12" mid-size vase
137. Marigold Northwood Beaded Cable 7 1/4" ruffled bowl, Smooth Rays interior
138. Scarce Green Northwood Wishbone ruffled, footed bowl
139. Radium Marigold Scroll Embossed large compote, Curved Star exterior
140. Pastel Marigold Northwood Peacock ruffled bowl, way above average
141. Amethyst Northwood Smooth Rays bonbon
142. Pumpkin Marigold Fenton Flowers rosebowl, oh so nice
143. Marigold Dugan Golden Harvest stopper, got the bottle?
144. Ice Green Northwood 9" Peacocks plate, lots of blues
145. Blue Enameled Cherries 7 piece water set, a great set!
146. Exceptional Green Millersburg Hanging Cherries water pitcher
147. Beautiful Green Paneled Dandelion tankard water pitcher and six tumblers
148. Blue Fenton Orange Tree Orchard water pitcher, outstanding color
149. Blue Fenton Orange Tree Orchard tumblers, 3 times \$
150. Purple Dugan Heavy Iris tankard water pitcher, S-U-P-E-R!!!!!!!!!!!!
151. Purple Dugan Heavy Iris tumbler, incredible radium electric
152. Purple Dugan Heavy Iris tumbler, electric blues and purples
153. Purple Dugan Heavy Iris tumbler, electric blues and purples
154. Purple Dugan Heavy Iris tumbler, very, very nice
155. Purple Dugan Heavy Iris tumbler, ditto
156. Purple Dugan Heavy Iris tumbler, ditto
157. Amethyst Fenton Butterfly and Fern tumbler, a dandy
158. Green Fenton Butterfly and Fern tumbler, equally nice
159. Blue Dugan Peacock at Fountain water pitcher, killer color
160. White Opaline Aurora Pearls 11" bride's basket in silver plated frame, simply irresistible!
161. Breathtaking Green Millersburg Cosmos 6" low bowl, as fine as you'll find
162. Green Millersburg Little Stars 7 1/2" ruffled bowl, a crowd pleasing pattern
163. Green Millersburg Blackberry Wreath 7 1/2" ruffled bowl, this one is no slouch
164. Amethyst Millersburg Holly Whirl 10" ruffled bowl, delightful
- 164A. Purple Millersburg collar base Fleur De Lis 1), 3 in 1 bowl, attractive
165. Purple Millersburg Swirled Hobnail pinched in spittoon, very narrow opening
166. Purple Millersburg Swirled Hobnail rosebowl, very pretty
167. Pumpkin Marigold Millersburg Swirled Hobnail rosebowl, oh my!
168. Radium Amethyst Millersburg Strawberry Wreath ruffled compote
169. Radium Purple Millersburg Peacock Tail Variant ruffled compote
170. Purple Millersburg Seacoast pin tray, extremely desirable and none of the typical rim chips
171. Scarce Olive Green Millersburg Night Stars deep bonbon, just as radium and beautiful as you'll find!
172. Purple Millersburg Tulip Scroll 8" vase, 4 3/4" opening, here's a nice one!
173. Radium Purple Millersburg Nesting Swan 9 3/4" ruffled bowl, fantastic color on the swan!
174. Amethyst Millersburg Many Stars 10" ruffled bowl, six pointed star, radium and remarkable!
175. Green Millersburg Primrose 9 3/4" ruffled bowl, another radium dandy
176. The Mother of all Green Millersburg Fleur De Lis 9" collar base, round, scalloped bowl. Blasting blue iridescence.....hold on, Jim Bob!!
177. Purple Millersburg Zig Zag 9 1/2", 3 in 1 bowl, you'll zig and zag a bunch to find a prettier one!
178. Luscious Green Millersburg Seaweed 10 1/2", 3 in 1 bowl, my personal favorite Millersburg pattern and this bowl is splendid!
179. Green Millersburg Trout and Fly 8 1/2" ICS bowl, better land this beauty!
180. Rare Green Millersburg Wild Rose lamp, w/ ladies head medallion. Super, super, show stopper!
181. Sapphire Stretch 6 1/2" plate w/ 20 optic rays
182. Super Marigold Imperial Mini Morning Glory 4" vase
183. Marigold Fenton Dragon and Lotus 9", 3 in 1 bowl
184. Yellow Vaseline Fenton Dragon and Lotus 9" ruffled bowl, excellent piece
185. Lime Vaseline Fenton Dragon and Lotus 9" ruffled bowl, also nice
186. Lime Green Vaseline Fenton Dragon and Lotus 9" ruffled bowl, does not glow
187. Green Fenton Dragon and Lotus 9" ruffled bowl, wonderful iridescence
188. Lavender Fenton Dragon and Lotus 9" ruffled bowl, pretty
189. Deep Blue Fenton Dragon and Lotus 9" ruffled bowl, no drop off in "pretty" here!
190. Odd Yellow Amber Fenton Dragon and Lotus 9" ruffled bowl, beautiful
191. Peach Opal Fenton Dragon and Lotus 8 1/2" ruffled bowl, loaded with opal and fabulous color
192. Green Fenton Thistle 9 1/4" plate, attractive
193. Aqua Opal Northwood Hearts and Flowers ruffled compote, a dazzler
194. Scarce Ice Green Northwood Peacock at Fountain ruffled compote
195. Electric Green Northwood Blossomtime ruffled compote, whew!
196. Ice Blue Northwood Fine Cut and Roses rosebowl, Fancy interior
197. Aqua Opal Northwood Fine Cut and Roses rosebowl, Fancy interior
198. Purple Northwood Drapery 7" tri-corner bowl, photogenic and electric
199. Aqua Opal Northwood Drapery rosebowl, one of the better ones
200. Aqua Opal Northwood Leaf and Beads rosebowl, has a real "blue" look to it
201. Aqua Opal Northwood Leaf and Beads rosebowl, exquisite pastels
202. Monster Electric Blue Northwood Leaf and Beads rosebowl, sharpen your pencils!
203. Aqua Opal Northwood Beaded Cable rosebowl, dripping with pastels
204. Aqua Opal Northwood Fruits and Flowers stemmed bonbon, be-yoo-ti-ful
205. Pumpkin Marigold Northwood Beaded Cable rosebowl, tops in its class
206. RARE Blue Northwood Double Loop creamer, great one and so scarce!
207. Scarce Blue Northwood Double Loop sugar, excellent match for #206
208. Deep Purple Northwood Singing Birds mug
209. Amethyst Northwood Singing Birds mug
210. Electric Blue Northwood Sunflower ruffled bowl, top notch color
211. Purple Northwood Three-Fruits Medallion ruffled bowl, electric interior
212. Nice Marigold Northwood Three Fruits Medallion ruffled bowl
213. Deep Purple Northwood Good Luck PCE bowl, electric hues
214. Ice Green Northwood Peacocks plate, plain back, radium pastel winner
215. Blue Northwood Poinsettia and Lattice ruffled bowl, scarce and nice
216. Aqua Opal Northwood Rose Show ruffled bowl, pretty pastiche of colors
217. Blue Northwood Rose Show ruffled bowl, electric blues and purples
218. Pumpkin Marigold Northwood Rose Show ruffled bowl, lots of hot pinks!
219. Dark Purple Northwood Greek Key ruffled bowl, shows well
220. Electric Blue Northwood Embroidered Mums ruffled bowl, class act!
221. Marigold Northwood Grape and Cable banana bowl
222. Marigold Northwood Peacock at Fountain ruffled fruit bowl
223. Purple Northwood Peacock at Urn master ICS bowl, very attractive iridescence
224. Purple Northwood Peacock at Urn 5 3/4" ICS bowl
225. Purple Northwood Peacock at Urn 5 3/4" ICS bowl
226. Purple Northwood Peacock at Urn 5 3/4" ICS bowl
227. Purple Northwood Peacock at Urn 5 3/4" ICS bowl, all of these are pretty
228. Green Northwood Petals 7 1/2" ruffled bowl, overlooked and undervalued, this is nice
229. Monster Pumpkin Marigold Northwood round bushel basket
230. Aqua Opal Northwood round bushel basket, full opal handles
231. Amethyst Northwood 8-sided round bushel basket, great interior color
232. Scarce Cambridge Near Cut Inverted Strawberry spittoon, marigold, radium
233. BA Basketweave hatpin
234. BA Basketflower hatpin
235. Blue Fenton Orange Tree hatpin holder, good feet!
236. Scarce Marigold Fenton Butterfly and Berry hatpin holder
237. Radium Marigold Dugan Formal 7 1/2" vase, scarce and lovely
238. Marigold Grape and Cable hatpin holder
239. Green Grape and Cable hatpin holder
240. Purple Grape and Cable hatpin holder, electric hues on top half
241. Rare Banded Blue Grape and Cable hatpin holder, so scarce and so nice
242. Powder Blue Fenton Two Flowers 11" ruffled, footed bowl, astonishing color!

- _____ 243. Blue Fenton Orange Tree 9" plate; trunk center, always in demand
- _____ 244. Pastel Marigold Fenton Leaf Chain 9 1/2" plate
- _____ 245. Blue Fenton Heart and Vine 9 1/4" plate, double electric, front and back
- _____ 246. Blue Fenton Persian Medallion 9 1/4" plate, very even, attractive iridescence
- _____ 247. Green Fenton Lotus and Grape 9 1/4" plate, scarce and nice
- _____ 248. Peach Opal Dugan Fanciful 9" plate, great opal on back and colorful on face
- _____ 249. Blue Dugan Fanciful 9" plate, very pleasing to the eye
- _____ 250. Dark Purple Dugan Butterfly and Tulip 13" square bowl, rainbow of iridescence
- _____ 251. Purple Dugan Circle Scroll JIP whimsied hat from tumbler
- _____ 252. Marigold Dugan Five Hearts 8" compote, top flattened out nicely, good color
- _____ 253. Purple Dugan Strawberry single lily epergne, truly a rare and striking piece
- _____ 254. Electric Purple Dugan Roundup 9" extremely low ruffled bowl/plate. Breathtaking blues!
- _____ 255. Purple Dugan Wishbone and Spades 10 1/2" chop plate, electric dazzler, plain back
- _____ 256. Purple Dugan Wishbone and Spades 6 1/2" plate, Tiffany type iridescence, wow!
- _____ 257. Green Northwood Nippon 9" plate, radium multi-color finish!
- _____ 258. Radium Amethyst Northwood Strawberry 9" plate
- _____ 259. Scarce Blue Northwood Wishbone 8" ruffled, footed bowl, multi-color gem
- _____ 260. Rare Green Northwood Butterfly bonbon, threaded back, enticing greens!
- _____ 261. Rare Blue Northwood Butterfly bonbon, threaded back
- _____ 262. Rare Marigold Northwood Butterfly bonbon, threaded back, great pastels
- _____ 263. Rare Purple Northwood Basket of Roses bonbon, this one is stippled
- _____ 264. Amethyst Central Shoe Store 6" advertising plate, delightful mirrored silver finish!
- _____ 265. Amethyst Mlbg Isaac Benesch advertising ruffled bowl, collector favorite!
- _____ 266. Magnificent Amethyst Northwood Fern Brand Chocolates card tray shape advertising plate, certainly one of the finest examples to be found!
- _____ 267. Radium Purple Mlbg Courthouse 7 1/2" ruffled advertising bowl, the building is "lit up" with color!
- _____ 268. Marigold Illinois Soldiers and Sailors Home 7 3/4" advertising plate
- _____ 269. Amethyst Jockey Club 6" ruffled advertising bowl, scarce and beautiful
- _____ 270. Colossal and Magnificent Purple Imperial Poppy Show 12" vase. Sets the standard for beauty and color among these vases. If a better one exists, find it!!!!
- _____ 271. Amethyst Smoke Imperial Poppy Show 12" vase. Not to belabor the point, but this one rivals the purple one for both rarity and the quality of iridescence. Forgetaboutit.....buy 'em both!!!
- _____ 272. Super Amber Imperial Loganberry vase, continuing a run of big time, beautiful vases!

SPECIAL NOTE:

NO SUNDAY CALLS, PLEASE!

Winning Absentee Bidders will be contacted Monday through Wednesday of the week following the Auction!

Thank You!

SEND ALL MAIL TO:

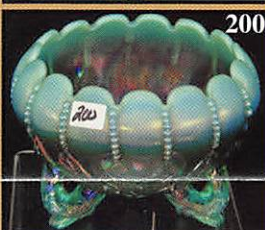
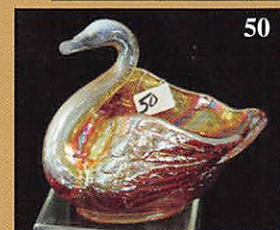
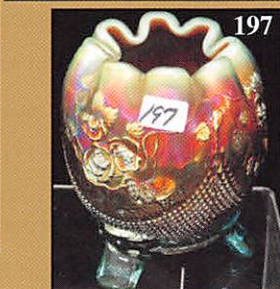
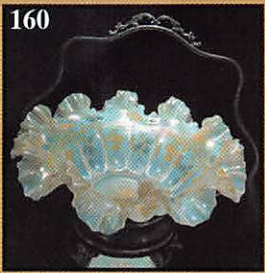
18350 Hunters Ridge Ct.
Boonville, MO 65233

WATCH:  **Web Site: www.AWK-SHN.com**

273. Green Imperial Loganberry vase, near teal in color, no helios finish on this one and yeah, the base glows brightly under a blacklight!
274. **Superb Purple Loganberry vase, just about as good as these come in purple!**
275. Aqua Opal Northwood Peacocks ruffled bowl, enchanting color, to be sure
276. **Pumpkin Marigold Fenton Dragon and Strawberry 9 3/4", ruffled, collar base bowl. Don't be "dragon" your feet on this one, pick them berries!**
277. Astonishing Aqua Opal Northwood Poppy pickle dish, blistering blues, fantastic fuschias!
278. **Electric Purple Northwood Hearts and Flowers 8 3/4" ruffled bowl, all you could ask for and then some!**
279. Purple Northwood Poppy Show ruffled bowl, delightful coloration
280. **Marigold Northwood Poppy Show 9 3/8" plate, could easily be called pumpkin**
281. Ice Blue Northwood Poppy show ruffled bowl
282. **Emerald Green Four Flowers Variant 9 1/4" plate**
283. Blue Northwood Daisy and Drape flared vase, very rare color for these vases
284. **Aqua Opal Northwood Daisy and Drape flared vase**
285. Purple Northwood Town Pump, good example
286. **Scarce Purple Northwood 8 1/2" Thin Rib Jester's Cap vase**
287. Stunning Green Northwood Corn Vase w/ stalk base, superior example
288. **Purple Northwood Corn vase, plain base, always in demand**
289. Marigold Northwood Tornado 6 1/2" vase with green decorated tornadoes. Although it has sold a couple times over the years, still believed to be the only known example sold at auction!
290. **Green Northwood Tornado 6 1/2" vase. VERY fine green example!**
291. Rare Blue Ribbed Northwood 6 1/4" Tornado vase. The color will "blow you away"!
292. **Pumpkin Marigold Northwood 6 1/4" Tornado vase, deluxe pinks and blues**
293. Electric Purple Imperial Colonial Lady 6" vase, doesn't get much better than this!
294. **Electric Purple Imperial Three Row 5 1/4" vase. Absolutely awesome!**
295. Electric Purple Imperial Fashion 6 1/2" rosebowl. Be still my beating heart!
296. **Marigold Imperial Fashion 6 1/2" rosebowl. No slacker for color either!**
297. Pumpkin Marigold Imperial Hattie 10 1/2" chop plate. Chop, chop!!
298. **Achingly Beautiful Electric Purple Dugan Petal and Fan 10 1/2" bowl. Tiffany type iridescence.**
299. Electric Purple Imperial Homestead 10 1/4" chop plate. Super detailed strike. Home, James!!!
300. **Electric Green Imperial Homestead 10 1/4" chop plate. Very scarce color-go green!**
301. White Northwood Hearts and Flowers ruffled bowl
302. **Marigold Northwood Hearts and Flowers ruffled bowl. Plentiful pinks and blues**
303. Cobalt Blue Northwood Hearts and Flowers PCE bowl, electric blue highlights
304. **Pastel Marigold Northwood stippled, ruffled Good Luck bowl**
305. Electric Blue Northwood Good Luck ruffled bowl
306. **Deep Purple Northwood Good Luck PCE bowl, multi electric iridescence**
307. Horehound Northwood Poinsettia and Lattice ruffled bowl, with lavender swirl in base. Unique and enticing!
308. **Pastel Aqua Opal Northwood Rose Show ruffled bowl. Simply beautiful!**
309. Marigold Northwood Rose Show Variant plate, striking pinks, blues and golds.
310. **Ice Green Northwood Embroidered Mums 8 3/4" plate, scarce and nice**
311. Electric Blue Northwood Embroidered Mums 8 3/4" ruffled bowl
312. **Fabulous Ice Blue Northwood Grape and Cable stippled PCE bowl, shimmering color!**
313. Electric Blue Northwood stippled Grape and Cable Variant PCE bowl
314. **Green Northwood Grape and Cable Variant/Old Rose Distillery advertising stippled plate, just as fine an example of these as you could want!**
315. Lavender Northwood Three Fruits stippled plate, pretty one!
316. **Scarce Horehound Northwood Three Fruits 9" plate, loaded with color**
317. Striking Pastel Marigold Northwood Peacocks 9" plate

- Great Line of Classic Contemporary glass pieces coming up next. Classic Contemporary? Think about it, many of these are 40 or more years old now..... you really can't call them "new" anymore! Every item photographed on website, so if our descriptions fall short, the pictures will tell the story!
318. **Large Red Fenton Cactus cuspidor**
319. Purple Fenton large floral pattern cuspidor
320. **Wisteria ACGA 2000 Seacoast cuspidor**
321. Pink Stretch Fenton large floral pattern cuspidor
322. **Peach Opal Fenton Grape and Cable large cuspidor**
323. Purple Fenton Grape and Cable large cuspidor
324. **Aqua Opal Fenton Grape and Cable large cuspidor, butterscotch overlay**
325. Blue Wetzel Glass Grape Lamp made for Sherman Hand
326. **Marigold Flash pattern glass oil lamp, "beaded oval" pattern**
327. Red Fenton Poppy lamp made for Rose Presznick
328. **Red 10 1/2" 1984 HOACGA chop plate whimsy from fernery**
329. Teal Robert Hansen 5 1/2" bird vase
330. **Green Robert Hansen 8" Moon and Star single lily epergne**
331. Red Robert Hansen Moon and Star muffineer
332. **Blue Robert Hansen turtle figurine**
333. Red Robert Hansen tulip toothpick holder
334. **Cobalt Robert Hansen elephant toothpick holder**
335. Amber Robert Hansen frog figurine
336. **Purple Robert Hansen elephant toothpick holder**
337. Red Robert Hansen S-Repeat toothpick holder
338. **Marigold cup and saucer (see photo)**
339. Marigold flash 6 1/2" handled basket (old)
340. **Red Ron Hansen S-Repeat cruet**
341. Amethyst Ron Hansen Singing Birds mug
342. **Red Amberina Ronald Hansen hobnail rosebowl**
343. Honey Amber Crider S-Repeat mini-cuspidor from toothpick holder
344. **Celeste Blue Crider S-Repeat JIP mini vase from toothpick holder**
345. Amber Crider Rib and Star cuspidor from toothpick holder
346. **Aqua Opal Terry Crider Wreathed Cherry cuspidor from tumbler**
347. Super Marigold Terry Crider cuspidor from tumbler
348. **Red Terry Crider ribbed cuspidor from tumbler**
349. Red Terry Crider hobnail salt and pepper
350. **Red Crider witches pot**
351. Green Crider Safety Night Light Co. Stars & Stripes toothpick holder
352. **Marigold Crider "Ohio Star"? toothpick holder**
353. Green Opal Crider frog paperweight
354. **Marigold Terry Crider frog paperweight**
355. Lavender flashed salt and pepper
356. **Ice Blue 10 3/4" Heavy Grape chop plate, marked LIG**
357. Aqua Opal Fenton Cherry Chain 11 1/4" chop plate
358. **Sapphire Fenton Fantail 9 1/2" float bowl made from fernery**
359. Aqua Opal Fenton Cactus 11" chop plate (1959)
360. **Red Elks BPOE paperweight**
361. Blue Elks BPOE paperweight
362. **Purple 1971 ICGA, Louisville Town Pump paperweight**
363. Purple 1969 ICGA, St. Louis flask
364. **White Carousel Horse, Vi Hunter figurine**
365. Green Carousel Horse, Vi Hunter figurine
366. **Amber 1971 ACGA shell mug**
367. Blue Opal 1978 ACGA shell mug
368. **Red 1979 ACGA shell mug**
369. Ice Green 1980 ACGA shell mug
370. **Yellow Vaseline 1981 ACGA shell mug**
371. Green 1983 Ohio Police Olympics Singing/Flying bird mug
372. **Red 1967 ACGA, Washington D.C. Robin mug**
373. Red HOACGA 1991 Peacock and Dahlia 6 1/2" plate
374. **Red HOACGA 1993 Good Luck 6 1/2" plate**
375. Amberina Slag NCCC 1979 8 1/4" bear plate
376. **Ice Green NCCC 1978 8 1/4" Golden Gate plate**
377. Cobalt Blue NCCC 1980 8 1/4" quail plate
378. **Amber NCCC 1981 8 1/4" prospector plate**
379. Red 1969 U.S. Capitol 10 1/4" chop plate, marked IG, 1st in series
380. **Root Beer 1974 ACGA 9 1/2" souvenir plate, marked IG**
381. BA perfume atomizer with heart cameo top, marked France
382. **Marigold wheel cut perfume atomizer base**
383. Marigold Flash DeVilbiss cologne bottle, no stopper
384. **Marigold Flash perfume atomizer, no top**
385. Blue Opal Ohio Star 9" vase, marked S for Smith Glass

👉 **Call Today To Sell Your Fine Items**
660-882-5292 Day
660-882-5283 Evening



CARNIVAL GLASS

Saturday - September 11th

Friday Preview : Sept. 10th - 12:00 Noon

At The Mickey Reichel Auction Gallery
1440 Ash Street
Boonville, MO

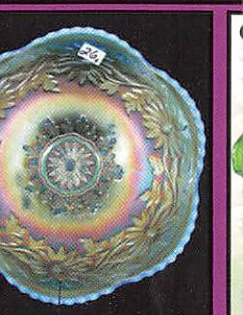
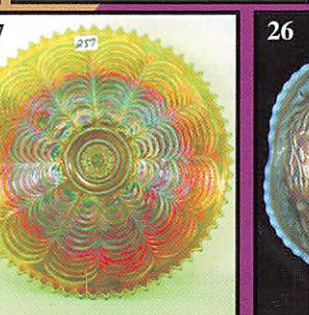
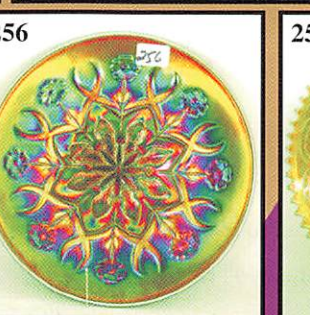
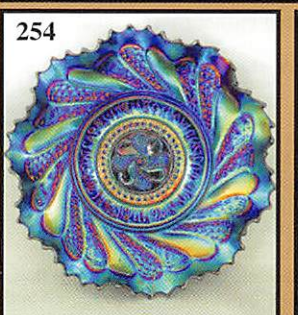
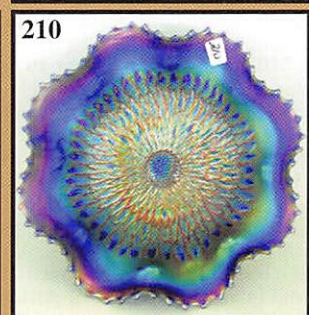
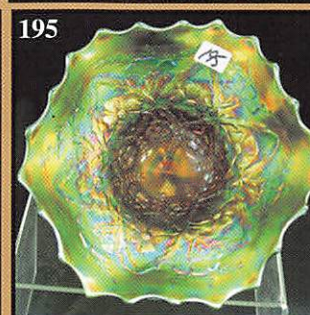
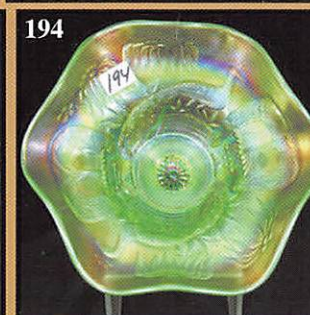
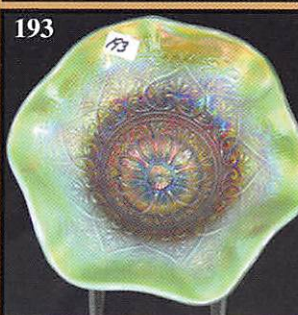
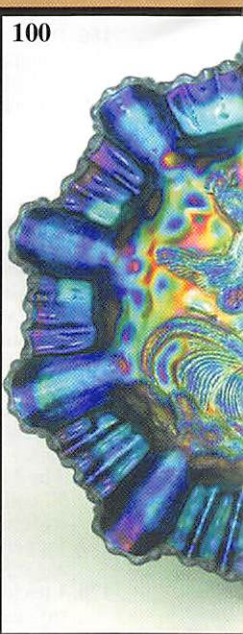
Held inside the Mickey Reichel Auction Gallery
Hwy. 5, Exit 101, Boonville, MO - 20100

Web Site www.awk.com

We are proud to do the Lifetime Sadler's Collection

Keep watching www.awk.com

A Fantastic Good Old Carnival Glass Collection



CLASS AUCTION

11th, 2010 at 9:00 am

noon - 5:00 PM & 7:30 am Auction Day

Shel Auction Gallery

Wiley Road

MO 65223

Shel, Boonville, MO, 1 Mile North of I-70 on

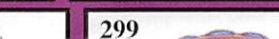
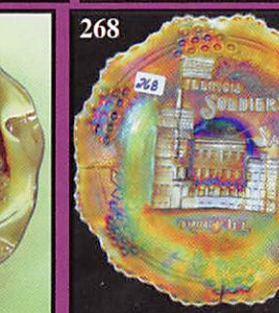
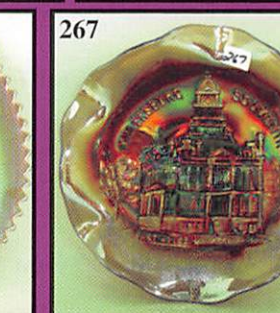
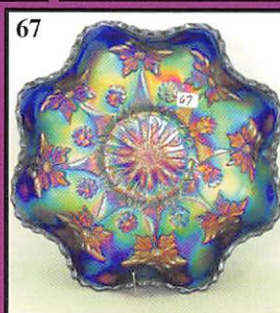
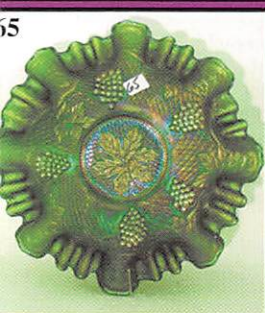
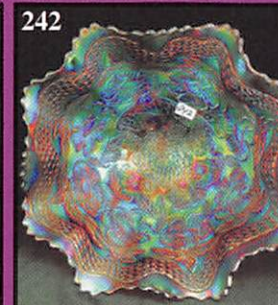
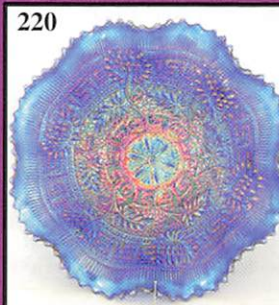
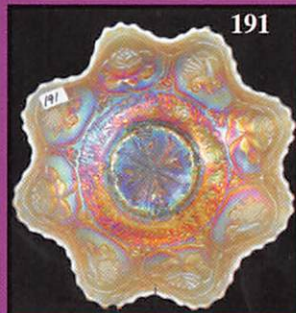
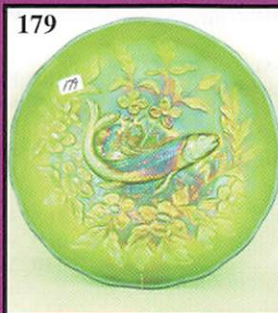
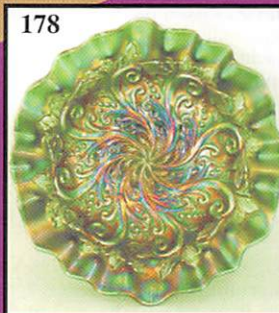
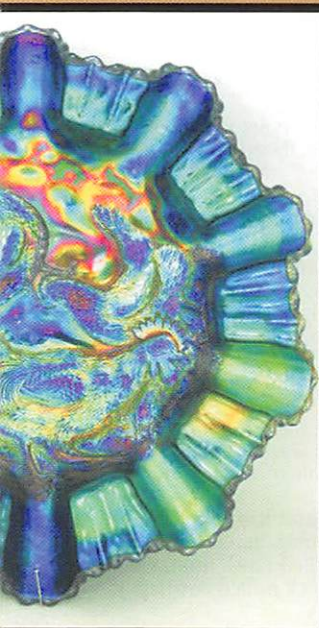
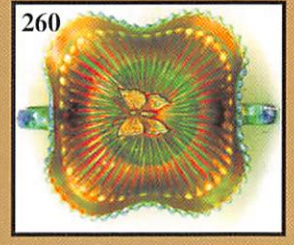
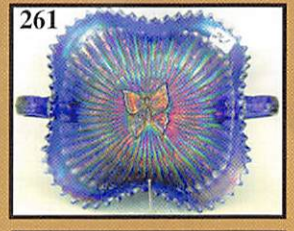
10 Miles West of Columbia, MO on I-70

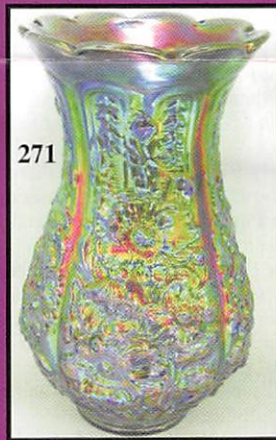
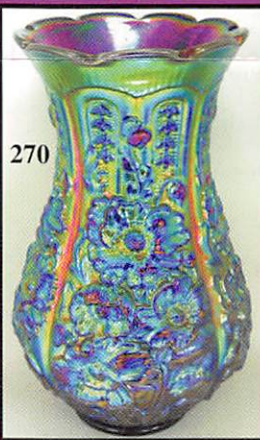
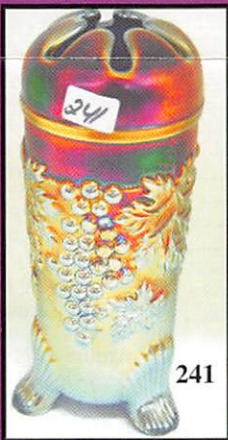
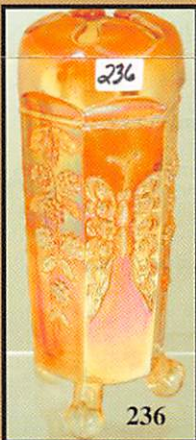
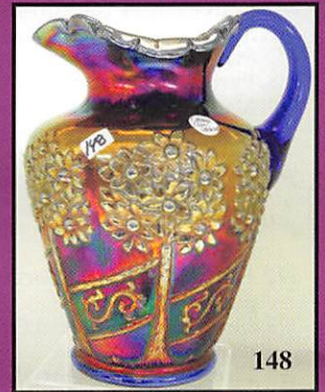
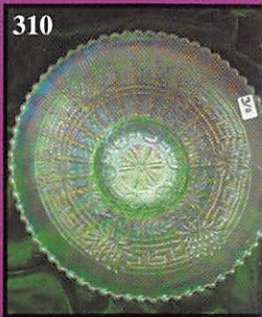
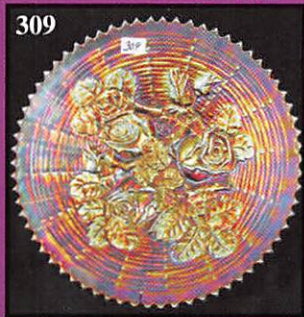
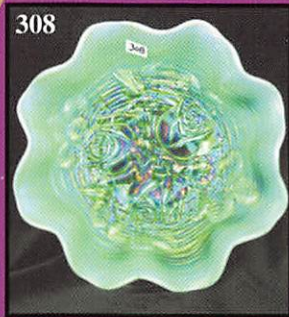
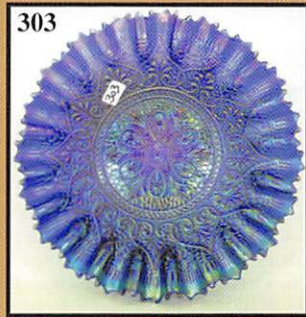
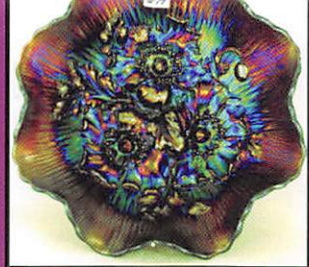
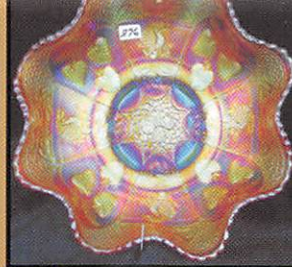
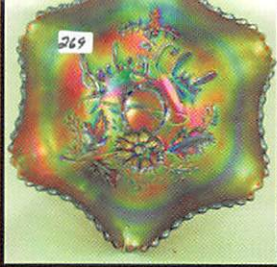
www.shn.com

Evening Estate Auction of the
Estate of Houston, Texas.

www.shn.com for Photo Gallery.



Hand picked over the years for quality and color.



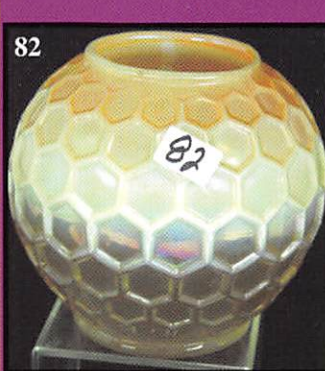


☛ **Make Reservations EARLY** at
 one of these local motels:
Days Inn: 660-882-8624
Comfort Inn: 660-882-5317
Super 8: 660-882-2900
Holiday Inn: 660-882-6882

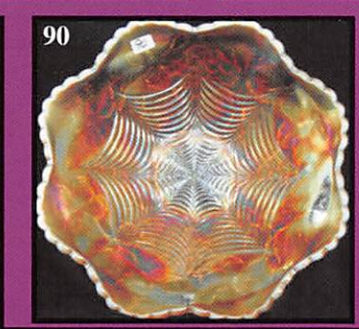
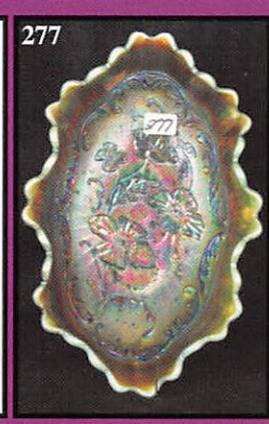
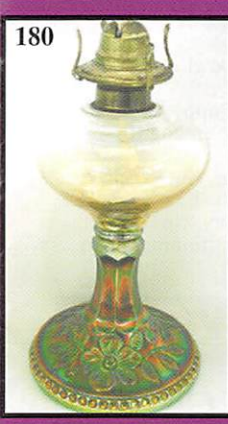
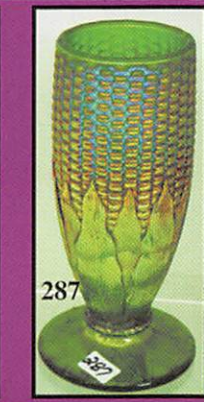
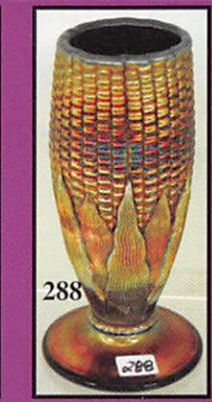
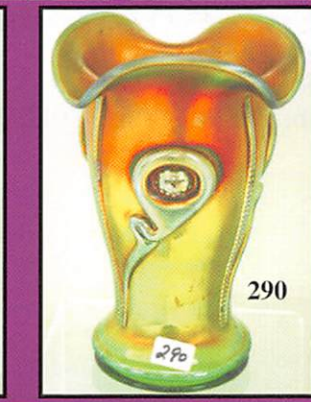
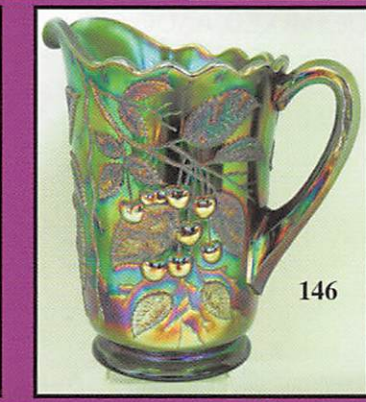
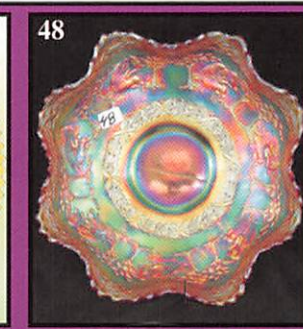
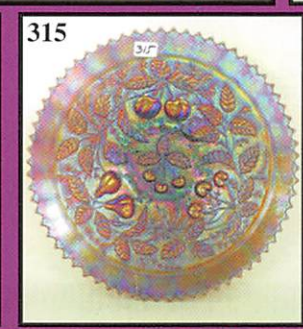
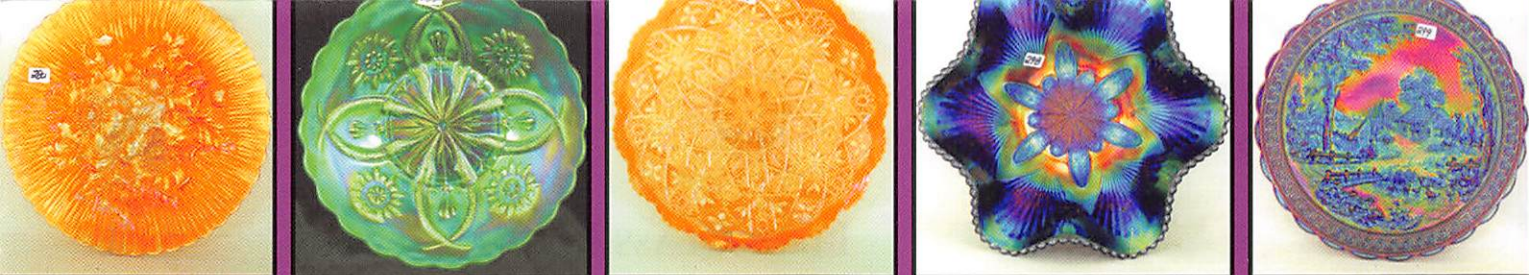
Mickey Reichel Auction Center
 1 Mile North of I-70 on Hwy. 5, Exit 101,
 Boonville, Missouri • 20 Miles West of
 Columbia, MO on I-70

 **TERMS:** Cash or Good Check,
 VISA and MasterCard accepted. 

4% Clerking Fee on all purchases except for
 payment of cash or check.
 Proper I.D. required.



*** *No return on any items once they leave*
 (No Exceptions) ***



★★★NO BUYERS PREMIUM★★★

ABSENTEE BID POLICY:
PLEASE NOTE: There is a \$6 handling charge for each successful bid which will be added to the selling price for all write-in bids. This is in addition to the cost of postage, insurance and packing. Your write-in bid will be entered just as if you are present and bidding. **Successful bidders will be notified in 1 to 3 days by the auctioneer (so be sure to include your phone number).** Direct mail bids to Auctioneer Mickey Reichel, 18350 Hunters Ridge Ct., Boonville, MO 65233-2971. Terms: Cash or Check accepted with proper I.D. and Social Security Number and References. Announcements made day of the auction supercede all printed material. Not Responsible for Accidents or Sold Items. **Call in Bids before Auction Welcome!**

☛ Call for additional information: 660-882-5292 days or 660-882-5283 evenings before 9:00 p.m.

FAX: 660-882-5292
 (evening hours start FAX transmission after beep)
 E-mail: mreichel@AWK-SHN.com
 Web Site: www.awk-shn.com

the Auction Center

SEE REVERSE FOR DETAILS