

*Ladies and Gentleman we are proud to offer the lifetime carnival glass collection of Mr. Don Vaughan of Kansas. This collection offers diversity, rarity and profoundly beautiful color. We could and should call virtually every piece "superb," "electric" or "exceptional," because this glass is worthy of such designations. To save space on the sale bill, we will do our best to limit our descriptive adjectives, but in truth, few collections of carnival glass rival Don's for color and quality. The overwhelming majority of pieces are pictured—you must check out our website to visualize this remarkable collection. Better still, book your rooms now and make plans to attend this sale. You'll be glad you did!*

1. Fenton Waterlily and Cattails marigold tumbler
2. Pumpkin M Northwood Grape and Cable round master berry bowl—Superb
3. M Northwood Grape and Cable small round berry bowls—2 times \$
4. Electric P Northwood Grape and Cable round master berry bowl—Radium
5. P Northwood Grape and Cable small round berry bowl
6. M Northwood stippled Grape and Cable 9 3/4" ruffled bowl—Excellent color
7. G Northwood Lustre Flute punch cup
8. Celeste blue Pastel Swan salt
9. G Northwood Tree Trunk Vt. 9 3/4" vase
10. Electric B Northwood Tree Trunk 10" vase
11. G Northwood Tree Trunk Vt. 10 1/2" vase, square top
12. Frosty W Northwood Tree Trunk 7 1/4" squatty vase
13. Pastel AO Northwood Four Pillars 10" vase
14. AO Northwood Four Pillars 10 3/4" vase, butterscotch
15. P Northwood Leaf Columns 10 3/4" vase—Electric
16. Ice B Northwood Diamond Point 9" vase—Scarce and lovely
17. Electric P Northwood Drapery Vt. 8" vase—Exquisite
18. G Northwood Tree Trunk 13" mid-size vase—Radium and nice
19. P Northwood Tree Trunk 13 1/4" mid-size vase
20. Powder Blue Opal Fenton Buggy Bayou 4 1/2" squatty vase—Not iridized, scarce, 5" opening
21. Radium M Triands (or Niobe) 6" vase
22. PO Dugan Target 5 1/2" squatty vase, 7" flared top—Top notch
23. P Northwood Grape and Cable cologne bottle w/ stopper
24. Pumpkin M Northwood Grape and Cable humidior—Scarce and lovely
25. Fantastic M Northwood Daisy and Plume/Raspberry interior fld. candy dish—Breathtaking pinks
26. Lav/Horehound Northwood Daisy and Plume/Raspberry interior fld. candy dish—Scarce
27. G Northwood Blackberry and Rays ruffled compote—Scarce pattern, beautiful
28. P Northwood Blackberry and Rays ruffled compote—Also scarce
29. M Northwood Blackberry and Rays ruffled compote—Equally scarce
30. Rare AO Northwood Peacock at Fountain compote—Not many out there!
31. Ice B Northwood Peacock at Fountain compote—Very scarce, nice pastels
32. Ice G Northwood Peacock at Fountain compote—Another scarce, beautiful piece
33. Lime G w/ marigold overlay Smooth Rays small ruffled compote
34. RARE Blue Imperial Flute 4" tumbler (9 flutes, starred, collar base)—Got one?
35. Electric P Imperial Fieldflower tumbler—They don't get any prettier than this
36. Fantastic G Imperial Grape tumbler w/ rayed interior—Uncommonly nice
37. M Colonial lemonade mug—Dark radium
38. Rich M Buzz Saw and File goblet—Very scarce
39. B Northwood Peach tumbler, electric highlights
40. Northwood Gold Rose tumbler, green with gold devices—Not iridized
41. Pumpkin M Northwood Acorn Burrs tumbler
42. Electric P Northwood Oriental Poppy tumbler
43. Pumpkin M Northwood Oriental Poppy tumbler
44. Ice B Northwood Oriental Poppy tumbler—Not often seen
45. Electric P Northwood Dandelion tumbler
46. Ice B Northwood Grape Arbor tumbler—Another tough one
47. G Northwood Grape and Cable standard size tumbler
48. Vaseline Northwood Concave Diamonds tumbler
49. Teal G Northwood Singing Birds tumbler, radium finish
50. Electric P Northwood Oriental Poppy tumbler—Stunning
51. B Fenton Orange Tree 9 1/2" plate—Extraordinary iridescence, plain and simple
52. Scarce A Fenton Holly 9 1/2" plate—Beauty to match its scarcity
53. M Fenton Peacock and Grape 9 1/2" collar base plate—Pinks and blues
54. B Fenton Peacock and Grape 9 1/2" collar base plate—Lush, unusual iridescence
55. B Fenton Heart and Vine 9" plate—Super green iridescence, hard to find this pretty
56. Knockout W Fenton Orange Tree 9 3/4" plate, trunk center—This defines electric pastel!!!!
57. A Fenton Captive Rose 8 1/2" bowl with 3 in 1 edge—A showstopper
58. Rare Sapphire Fenton Two Flowers 10 1/2" ball-footed, ruffled fruit bowl—Odd, gorgeous radium finish
59. M Fenton Little Fishes 9" ICS, ball footed bowl—Not often found, particularly this pretty
60. Red Fenton Acorn 7 1/2" ruffled bowl—Sweet piece
61. Red Fenton Holly 6 1/2" 2 sides up hat—Sparkling color
62. Very Rare Celeste Blue Fenton Grape and Cable 8 1/4" footed bowl—What a find!
63. Pumpkin M Fenton Captive Rose ruffled bowl—Astonishing color
64. Scarce Aqua Fenton Water Lily 6 1/4" round, footed sauce—Dark and lovely
65. G Fenton Water Lily 6" round, footed sauce
66. M Fenton Peacock and Dahlia 7 3/4" plate—Nice eye appeal and tough to find
67. M Kittens cup and saucer—Always desirable
68. M Fenton Sailboats wine glass
69. M Fenton Persian Medallion rosebowl
70. M Fenton Persian Medallion hair receiver—Rich, rich color
71. B Fenton Orange Tree hatpin holder—Another winner!
72. Emerald Green Fenton Orange Tree 8 1/2" ICS bowl, trunk center—HEAD OF THE CLASS
73. Very scarce B Fenton Mirrored Lotus 7" ruffled bowl—Seldom seen and pretty
74. White Fenton Mirrored Lotus rosebowl—How rare is this piece? (Very!)
75. Vas Fenton Water Lily 6" footed, ruffled bowl
76. A Fenton Vintage (Grape) 8" whimsied bowl from fernery, candy ribbon edge—Scarce
77. M Fenton Pine Cone 6 1/4" plate
78. A Fenton Ten Mums 8 3/4" CRE bowl—My, my, this one is pretty
79. G Fenton Iris 7 1/4" ruffled compote—Flattened out nicely and lots of blue iridescence
80. A Fenton Vintage (Grape) 7 3/4" plate—Radium electric gem
81. Scarce Aqua Northwood Peacocks ruffled bowl—Super color from edge to edge
82. Ice B Northwood Peacocks ruffled bowl—Blue and purple hues
83. B Northwood Peacocks ruffled bowl—Multi electric tints
84. Pastel M Northwood Peacocks ruffled bowl—RARE BW exterior
85. M Northwood stippled Peacocks bowl—Exceptional pinks and blues
86. Lovely M Northwood stippled Peacocks plate—Top notch
87. W Northwood Peacocks plate—Electric pastels!
88. Rare Lime G Northwood Peacocks plate—Unreal iridescence, wow!!
89. B Northwood Peacocks plate—Blue and purple electric highlights
90. P Northwood Peacocks ruffled bowl—A classic carnival beauty
91. Pumpkin M Northwood Peacocks ruffled bowl—The center has a "framed" look, devastating color on birds
92. G Northwood Peacocks PCE bowl, scarce BW exterior—Some might say this is emerald; it is superb
93. Pastel AO Northwood Peacocks ruffled bowl—Loaded with opal and has lovely pastels
94. AO Northwood Good Luck ruffled bowl—Very scarce! Exceeds the legal limit for killer pastel colors!
95. M Northwood Good Luck ruffled bowl—Delicious hot pinks cover the interior
96. G Northwood Good Luck PCE bowl—Scarce, splendid
97. Electric B Northwood Good Luck PCE bowl—Radium monster, one tip missing
98. G Northwood Good Luck PCE bowl, BW exterior—Killer color
99. Extraordinary B Northwood stippled Good Luck ruffled bowl—Tiffany style finish
100. M Northwood stippled Good Luck ruffled bowl—Very attractive
101. Rare Sapphire N Good Luck ruffled bowl—Indescribably beautiful iridescence
102. Super M Imperial Little Barrel novelty
103. M Imperial Little Barrel novelty—top polished down, but smooth
104. Electric P Imperial Flute toothpick
105. Electric P Imperial Grape 8 1/2" ruffled bowl—Dripping w/ color
106. Pastel M Imperial Grape 9 1/2" deep, round bowl—Shimmering champagne look, awesome pastels
107. P Imperial Lustre Rose 10 1/2" fld. fruit bowl—Gorgeous inside and out
108. Red Amberina Imperial Lustre Rose 9 1/4" footed plate—Iron Cross Mark, not iridized
109. Red Amberina Imperial Lustre Rose 10 1/2" collar base chop plate—Iron Cross Mark, not iridized
110. P Imp Open Rose 9" round, deep bowl—Enticing color, electric blue exterior
111. P Imp Lustre Rose fld. fernery—Vibrant greens, blues and purples
112. Smoke Imperial Grape 10 1/2" flared bowl—Pastels deluxe!!!
113. Electric P Imperial Grape wine decanter w/ stopper
114. Electric P Imperial Grape wine decanter w/ stopper
115. Electric P Imperial Grape wine decanter—An eye popper without a stopper
116. Scarce G Imperial 474 7" ruffled compote—Rare, more of a lime-ish green color

117. P Imperial Grape ruffled compote
118. P Imperial Scroll Embossed 7 3/4" large, ruffled compote—Super electric!!
119. Smoke Imperial Chesterfield 11 1/4" giant, pedestal footed fruit bowl—Never seen another one
120. Electric Purple Imperial Loganberry vase—Spectacular color from top to bottom!
121. Vigna Vetro finish (over milkglass) Imperial Loganberry vase—Marked IG, not iridized—Unusual!!!!
122. Vaseline Australian Lily 10 1/2" funeral vase—Ultra scarce, not iridized. Glows wildly!
123. Vaseline 4 3/4" vase, unknown pattern. Very unique, not iridized, glows like a champ
124. Yellow 12 1/4" vase, nicely iridized—Can't find a name for this pattern, has Gothic Arches look, starred base
125. B Fenton Panelled Diamonds and Bows 7 1/4: vase, very colorful
126. M Imperial Ripple 18" funeral vase, wide 7" fanned out opening
127. G Imperial Ripple 15 1/4" mid-size vase w/ scarce 4" base, 6" to opening
128. Super M Imperial Ripple 12" funeral vase with great, great color and huge 8 1/4" opening
129. Radium Smoke Imperial Ripple 13" vase, marked IG
130. Light P Imperial Ripple 11 1/2" mid-size vase w/ 4" base, 7" top—Impressive color
131. Scarce Aqua Imperial Ripple 10 1/2" vase—Exceptionally pretty throat
132. P Imperial Ripple 9 1/2" vase—Sharp strike, 5 3/4" opening, electric all the way
133. Wonderful P Imperial Ripple 6 1/2" squatty vase—Unbeatable electric color and strike
134. Dark M Imperial Ripple 4" squatty vase, 5" flattened top—Small but mighty!
135. Smoke Imperial Grape salt and pepper, marked IG
136. Smoke Imperial Grape salt and pepper, marked IG
137. Dark M Imperial Grape salt and pepper, marked IG
138. M Imperial Grape salt and pepper, marked IG
139. Radium Smoke Imperial Chrysanthemum chop plate, marked IG
140. Red Flute 7 pc child's water set—more recent manufacture
141. Emerald G Inverted Strawberry 5 1/2" round compote—recent vintage
142. M Joe St Clair 1971 BPOE 5 1/4" plate
143. BA Degenhart 3 3/4" carnival glass tomahawk
144. Purple L.G. Wright Grapevine Lattice tankard water pitcher
145. Marigold Marathon pig savings bank
146. Emerald G 1983 A.C.G.A. Seacoast cuspidor
147. Vaseline opal 1983 I.C.G.A. Frolicking Bears cuspidor
148. AO Fenton Drapery handled, footed basket—scarce
149. AO Fenton Butterfly and Berry tumbler—very collectible
150. AO Fenton Vintage (Grape) 7" ruffled bowl—Rare size and color
151. G Fenton Peacock Tail 7 1/4" plate—Scarce little number
152. M Fenton Horse Medallion 7 3/4" plate—Drenched in pinks and blues
153. Powder B Fenton Horse Medallion 6 1/2" ICS bowl—Super nice and very scarce
154. Custard w/ nutmeg Fenton Horse Medallion 7 3/4" plate—not iridized
155. Rare B Fenton Dragon and Lotus 9 1/4" plate—A beautiful prize piece
156. Emerald G Fenton Dragon and Lotus 7 3/4" deep ICS bowl—Unreal color
157. B Fenton Peacock Tail 7 3/4" CRE bowl—Not easy to find in this color
158. A Fenton Vintage (Grape) 9" low ruffled whimsy bowl from fernery—Scarce
159. Scarce M Fenton Dragon and Strawberry 9 1/2" footed, ruffled bowl—Pumpkin all the way
160. M Fenton Spector's Department Store 9 1/2" plate—Always desirable advertising item
161. Rich M Fenton Peacock at Urn 9 1/4" plate—Lots of greens and yellows
162. B Fenton Peacock at Urn 9 1/2" plate—Vivid multi-hued iridescence
163. W Fenton Peacock at Urn 9 1/4" plate—Fabulous pastel colors
164. G Fenton Concord 9" plate—Plates are scarce and this one is nice
165. B Fenton Rustic 19 1/4" funeral vase—Excellent purples, greens and blues, large opening
166. Pumpkin M Fenton Rustic 19" funeral vase—Another wide opening with colors galore in throat
167. Scarce W Fenton Rustic 18 1/4" funeral vase—Lots of pastels
168. Electric A Fenton Rustic 18 1/2" funeral vase—Try finding one better!
169. G Fenton Rustic 18" funeral vase—radium multi-color finish, whew!
170. B Hobnail Variant 15 1/2" vase, 4" base—Quite nice
171. Teal G-Mlbg Rose Columns 9 3/4" vase—one of the most desirable Millersburg vases
172. M Mlbg Swirled Hobnail 9 3/4" vase—Way above average
173. M Mlbg Swirled Hobnail rosebowl—excellent color and iridescence
174. Electric P Mlbg Hobnail rosebowl—hard to imagine one better!
175. Radium P Mlbg Grape Wreath Vt. 7" 3in 1 edge bowl—Vivid electric Feathered Leaf center
176. G Mlbg Little Stars 7 1/2" ruffled bowl—lots of blues, way better than these usually come
177. Radium P Mlbg Holly Sprig 7 1/4" ruffled bowl—fantastic
178. P Mlbg Courthouse ruffled bowl—Super strike and great color
179. Radium P Mlbg Peacock 10" ruffled bowl—Luscious color
180. Radium P Mlbg Peacock 9 1/2" flared master berry bowl
181. M Mlbg Peacock at Urn 9" deep ICS bowl—Radium and colorful
182. Radium P Mlbg Peacock 5 1/2" small, flared berry bowl—Enticing color
183. Radium P Mlbg Peacock 5 1/2" small, flared berry bowl—also nice
184. A Mlbg Peacock 5 1/4" low ruffled bowl—Super pretty, tried to be a plate
185. Radium M Mlbg Blackberry Wreath 5" deep, flared berry bowl
186. Incredible P Mlbg Boutonniere ruffled compote—the best one I've seen
187. Staggering P Mlbg Strawberry Wreath 6 1/2" ruffled compote—Awesome color
188. Radium P Mlbg Blackberry Wreath 10" ICS bowl—Scarce and wonderful
189. Rare B Mlbg Blackberry Wreath 10 1/2" ruffled bowl—Always in demand and nice
190. Sensational Satin P Mlbg Whirling Leaves 10 1/2" ruffled bowl—Throw the price guides away and buy it!
191. Crystal Mlbg Ohio Star water pitcher—not iridized
192. Crystal Mlbg Ohio Star 4 pc table setting, complete—not iridized
193. Crystal Palm Beach cruet w/ stopper—not iridized
194. B Northwood Singing Birds mug—electric highlights
195. AO Northwood Singing Birds mug—fantastic, loaded with opal
196. AO Northwood Dandelion mug—yet another scarce and wonderful item, butterscotch overlay
197. Pastel AO Northwood round bushel basket
198. AO Northwood Leaf and Beads rosebowl—Striking example
199. Ice B Northwood Drapery tri-corner bowl—wonderful pastels
200. Rare Ice B Northwood Grape and Cable fernery—awash in pinks, how many have you seen?
201. Ice B Northwood eight-sided Bushel Basket—pastel laden interior
202. Superb Ice B Northwood Fruits and Flowers stemmed bonbon—Award winning color
203. Rare Sapphire (?) Opal Northwood Fine Cut and Roses 7" ruffled bowl, Fancy interior—A very unusual blue, darker than ice blue or powder blue, you make the call on color. An outstanding piece.
204. Ice B Northwood Grape and Cable pin tray
205. G Northwood Grape and Cable pin tray
206. Emerald G Northwood stippled Grape and Cable bonbon—Many would call this emerald
207. Electric P Northwood Grape and Cable hatpin holder—Fabulous electric blues
208. Pumpkin M Northwood banded Grape and Cable hatpin holder—Wowser
209. BA Diamond hatpin
210. BA Big Butterfly hatpin
211. RARE Ice Blue Northwood stippled Three Fruits PCE bowl—One of the top rarities in this auction
212. Honey Amber Northwood stippled Three Fruits plate—Unusual pastel rarity
213. M Northwood stippled Three Fruits PCE bowl
214. G Northwood Three Fruits PCE bowl, BW exterior
215. B Northwood stippled Three Fruits plate—Electric blue and purple highlights
216. Scarce G Northwood stippled Three Fruits ruffled bowl—Nice find in green
217. Very Scarce AO Northwood stippled Three Fruits ruffled bowl—Lovely pastels, lots of opal
218. G Northwood Greek Key PCE bowl, BW exterior—Loads of color
219. M Northwood Greek Key 9 1/2" plate, BW exterior—great all-over color
220. Emerald G Northwood Stippled Rays 10 1/4" PCE salad bowl, plain exterior—Show stopper
221. P Northwood Peacock at Fountain butter dish w/ lid—Multi electric beauty
222. G Northwood Peacocks ruffled bowl—Outstanding color
223. G Northwood Old Rose Distilling/stippled Grape and Cable advertising plate—extra nice
224. Electric G Northwood Grape and Cable Vt. 9 1/4" plate—Mercy sakes, mercy sakes!
225. Emerald G Northwood stippled Grape and Cable Vt. plate
226. G Northwood Grape and Cable 11" ruffled bowl—Striking iridescent hues
227. Scarce G Northwood Good Luck Vt. 9" plate, BW exterior—delightful colors
228. G Northwood Rose Show ruffled bowl—Scarce and nice
229. Rare G Northwood Rose Show plate—pleasing rose tint to iridescence
230. P Dugan Garden Path 10" ruffled bowl—awesome electric, Dugan at its finest
231. Scarce M Dugan Five Hearts 7 1/4" round, flared, deep bowl—almost a compote shape

232. Radium M Dugan Brooklyn Bridge ten ruffled bowl—Sweet!  
 233. Super scarce horehound Dugan Roundup 9 1/8" plate—Splashy colors  
 234. P Dugan Holly and Berry ruffled bowl—electric blues and purples  
 235. Electric P Dugan Fishscale and Beads 8" low, ruffled bowl—Glorious greens and pinks  
 236. Radium electric P Dugan Question Marks compote w/ Georgia Peach/Puzzle exterior—Blinding color  
 237. P Dugan Flowers and Frames 9" ten ruffle bowl—electric blue and purple highlights  
 238. P Dugan Petal and Fan 10 1/2" ruffled bowl, Jeweled Heart exterior—Superb electric rainbow coloration  
 239. Deep Teal Four Flowers Variant 9" ruffled bowl—Very scarce color and quite lovely  
 240. Electric P Imperial Grape 11 1/2" ruffled bowl—A knockout for color  
 241. Electric P Imperial Grape 8 3/4" ruffled bowl—Fantastic radium electric  
 242. Electric P Imperial Grape 6" ruffled bowl  
 243. Electric P Imperial Pansy 9" ruffled bowl  
 244. Emerald G Imperial Windmill 7" deep, round bowl—Scarce and striking Imperial piece  
 245. Electric P Imperial Cobblestone 8 3/4" ruffled bowl—Neon electric  
 246. P Imperial Star of David 8 1/2" ruffled bowl—yet another great electric piece  
 247. Very Rare White Dugan Vintage powder jar with lid—Great pastels, great match top and bottom  
 248. Electric P Dugan Vintage powder jar base only—got the matching lid?

249. Blue Opal Westmoreland Strutting Peacocks creamer and sugar—not iridized  
 250. P Imperial Chrysanthemum 10 3/8" chop plate—intoxicating color  
 251. M Imperial Homestead 10 3/8" chop plate—Sunrise pinks, greens and yellows  
 252. Electric P Imperial Grape 5 piece water set—magnificent set  
 253. Super M Imperial Grape water pitcher  
 254. Electric B Northwood Peacock at Fountain water pitcher  
 255. Electric B Northwood Peacock at Fountain tumbler—enchanting color  
 256. Electric B Northwood Peach 5 pc water set  
 257. Near Emerald G Northwood Grape and Cable water pitcher  
 258. Stupendous Radium P Northwood Oriental Poppy tankard water pitcher, Rib interior  
 259. Radium M Northwood Oriental Poppy tankard water pitcher, Rib interior—A standout!  
 260. M Northwood Memphis fruit bowl and base—loaded with pinks  
 261. M Northwood Memphis punch cups—8 times \$  
 262. M Northwood Peacock at Fountain punch bowl, base, seven cups—Blazing pink interior  
 263. What???? P Wreath of Roses punch bowl base, heavily damaged—Don's first piece?  
 264. Scarce B Northwood stippled Grape and Cable PCE bowl—Hard to come by  
 265. G Northwood stippled Grape and Cable 8 3/4" ruffled bowl—Delightful iridescence

## SPECIAL NOTE:

**NO SUNDAY CALLS, PLEASE!**

Winning Absentee Bidders will be contacted Monday through Wednesday of the week following the Auction!

Thank You!

## SEND ALL MAIL TO:

18350 Hunters Ridge Ct.  
 Boonville, MO 65233

**WATCH:**  **Web Site: [www.AWK-SHN.com](http://www.AWK-SHN.com)**

266. Magnificent Radium P Northwood Grape and Cable Vt. 9" plate—Top Shelf piece
267. P Northwood stippled Grape and Cable Vt. 9" plate—Scarce and quite lovely
268. Electric B Northwood Grape and Cable 10 1/2" large berry bowl—Fabulous
269. Rare Ice G Northwood Grape and Cable 10 1/4" ICS bowl—great pastel iridescence
270. Ice G Northwood stippled Grape and Cable 8 3/4" ruffled bowl—Extremely tough to find
271. Rich Ice G Northwood Grape and Cable cracker jar—Quite a find
272. Ice G Northwood Grape and Cable centerpiece bowl, points go straight up
273. Ice G Northwood Grape and Cable banana bowl
274. Ice G Northwood Rose Show ruffled bowl—beautiful blue highlights
275. Ice G Northwood Peacock at Urn 9 3/4" ICS bowl
276. Ice G Northwood Peacock at Urn 5 1/2" ICS bowl—super pretty example
277. Lime G Northwood Embroidered Mums 9 1/4" plate—So difficult to find in this color
278. Lime G Northwood Wild Strawberry 10" ruffled bowl—Super rare item
279. Lime G Northwood Peacock at Urn 10" ICS bowl—tough, tough, tough
280. Radium M Imperial Morning Glory 16" funeral vase—magnificent color
281. Electric P Imperial Morning Glory 13 1/4" funeral vase, 7 3/4" opening
282. Very scarce Smoke Imperial Smooth Panels 11" funeral vase, wide 7 3/4" opening
283. M Imperial Curled Rib 11 1/4" JIP vase, radium
284. Electric P Imperial Freefold 11 3/4" vase
285. Electric P Imperial Beaded Bullseye 8 1/4" vase, 6 3/4" opening—Blasting color
286. P Imperial Mini Morning Glory 7" vase—electric all day long
287. Rich M Imperial Thin Rib and Drape 5" vase
288. Radium electric P Northwood Tree Trunk 13 1/2" mid-size vase
289. Superb G Northwood Tree Trunk 12 3/4" mid-size vase—Neat green iridescence
290. Sapphire Northwood Thin Rib 11 1/4" vase
291. P Northwood Tornado 6" vase—very lovely
292. Beautiful G Northwood Tornado 6" vase
293. Marigold/Moonstone Westmoreland Corinth 9" JIP vase
294. Blue Opal Westmoreland Corinth 8 3/4" JIP vase
295. Aqua Westmoreland Corinth 9 1/8" JIP vase
296. Deep Teal Westmoreland Corinth 8" JIP vase
297. Chinese Coral Northwood Thin Rib 13 1/2" mid-size vase—Scarce, not iridized
298. Chinese Coral Northwood Thin Rib 13" mid-size vase—as above
299. Chinese Coral Northwood Twist 9 3/4" vase—as above
300. Chinese Coral Northwood Twist 9" vase—as above
301. Spectacular G Northwood Poppy Show 9 1/4" plate—OMG!!
302. Super G Fenton Lotus and Grape 9 1/4" plate—Makes a statement
303. G Northwood stippled Three Fruits 8 3/4" ruffled bowl—I'll take two!!
304. G Northwood stippled Strawberry 9 1/4" plate—Lush fuschias and blues
305. G Northwood Grape and Cable banana bowl—pretty interior
306. G Northwood Wishbone 9 3/4" PCE bowl, plain back—Iridescence makes it look purple
307. P Northwood Rose Show 9" deep plate
308. Pastel M Northwood Rose Show 9 1/4" plate—attractive color
309. Pumpkin M Northwood Rose Show ruffled bowl
310. Zesty AO Northwood Rose Show ruffled bowl—absolutely awash with color
311. Dark Ice B Northwood Rose Show ruffled bowl—great pastels
312. Ice B Northwood Nippon PCE bowl, Rib exterior—very pretty
313. Ice B Northwood stippled Grape and Cable PCE bowl—scarce and impressive
314. Dark Ice B Northwood Grape and Cable banana boat—vivid pastels
315. Rich Ice B Northwood Grape and Cable centerpiece bowl, tips pointed in—exceptionally nice
316. Ice B Northwood Peacock at Urn 10" ICS bowl—pleasing pastels
317. Ice B Northwood Peacock at Urn 5 1/2" small ICS bowl—super colors
318. Dark Ice B Northwood Hearts and Flowers ruffled bowl—A crowd pleaser, for sure
319. Ice B Northwood Poppy Show ruffled bowl—Well above average for color
320. Ice B Northwood Wishbone footed, ruffled bowl—Very scarce color
321. Rare Ice B Northwood Poinsettia and Lattice ruffled bowl
322. Ice B Northwood Embroidered Mums ruffled bowl
323. Pumpkin M Northwood Poinsettia and Lattice footed, ruffled bowl—jaw dropping color
324. Pumpkin M Northwood Peacock at Urn 10" ICS bowl, fully stippled—Step right up!
325. Pumpkin M Northwood Peacock at Urn 5 1/2" ICS bowl
326. Electric P-Northwood Poinsettia and Lattice footed, ruffled bowl—Stunning blue iridescence
327. P Northwood Peacock at Urn 10" ICS bowl—marvelous colors
328. P Northwood Peacock at Urn 5 1/2" ICS bowl—nice match to #327
329. Renninger B (?) Grape and Cable stippled, banded banana boat—this is a good one!
330. Electric B Northwood Embroidered Mums ruffled bowl—Top o' the charts
331. Electric B Northwood Peacock at Urn 9 1/2" ICS bowl, fully stippled and fabulous
332. Electric B Northwood Peacock at Urn 5 1/2" ICS bowl—Sharp strike, vivid colors
333. B Northwood Wishbone footed, ruffled bowl—electric highlights
334. B Fenton Captive Rose 9 1/2" plate—another dandy!
335. B Fenton Persian Medallion 9 1/4" plate—superb mix of colors
336. B Fenton Leaf Chain 9 3/8" plate—Splendid, splendid color
337. Scarce B Northwood stippled Grape and Cable PCE bowl
338. A Fenton Captive Rose 9 1/4" plate—consistently nice color on this plate
339. A Fenton Lotus and Grape 9 1/4" plate—yet another scarce, desirable plate
340. Lavender Northwood Grape and Cable PCE bowl—amazing green coloration
341. Electric P Northwood Poppy Show ruffled bowl
342. P Northwood Wishbone footed, ruffled bowl—pleasing purples and blues
343. P Northwood Hearts and Flowers 9" plate—another great plate!
344. Sapphire Northwood stippled Grape and Cable Vt. plate—A scarce beauty
345. Ice Blue Opal Northwood stippled Three Fruits Medallion ruffled bowl—lavish pastels
346. Blue Opal Northwood stippled Three Fruits Medallion ruffled bowl—Opal all day long!
347. Scarce Ice G Northwood Nippon PCE bowl
348. RARE White Northwood Embroidered Mums 9" plate, smooth back—May be one of a kind
349. Stunning W Northwood Poppy Show 9 3/8" plate
350. W Northwood Peacock at Urn 9 3/4" ICS bowl—Outstanding pastel hues
351. Frosty W Northwood Peacock at Urn 5 3/4" ICS bowl
352. M Northwood stippled Grape and Cable Vt. 9 1/4" plate—collector favorite
353. M Northwood Poppy Show ruffled bowl
354. Pastel M Fenton Leaf Chain 9 1/2" plate, very scarce in pastel
355. Pumpkin M Fenton Leaf Chain 9 5/8" plate—Color and more color!
356. Killer radium M Northwood 9 3/8" Poppy Show plate
357. Mind Boggling M Northwood stippled Peacocks plate—Remarkable radium finish
358. Spectacular M Fenton Peacock at Urn 9 1/4" plate—If you can find one better, buy it!!!!
359. Exceptional M Northwood Hearts and Flowers 9 1/4" plate
360. Ultra Pumpkin M Northwood Wishbone footed plate—As good as these come!
361. Showy M Northwood Grape and Cable spatula footed plate, Meander exterior
362. Super M Northwood stippled Three Fruits 9" plate
363. Outstanding M Northwood stippled Three Fruits PCE bowl
364. Incredible M Northwood stippled Strawberry ruffled bowl—What are you waiting for?
365. Pastel M Northwood Peacock at Urn 10 1/2" very scarce ruffled bowl, fully stippled
366. Astonishing Radium M Northwood Strawberry 9" plate—Picture tells the story
367. Amazing Radium M Northwood Grape and Cable 9" plate—Words fail me!
368. Rare G Northwood Peacock at Urn 5 5/8" PCE bowl—top notch
369. Custard w/ nutmeg Northwood Peacock at Urn 5 1/2" PCE bowl—not iridized
370. Chinese Coral Northwood 9 1/2" flared bowl w/ separate black amethyst base—not iridized
371. Chinese Coral Northwood chamber candlestick holder, rare—not iridized
372. Chinese Coral Northwood #719 candlesticks, pair—not iridized
373. Chinese Coral Northwood #695 candlesticks, pair—not iridized
374. Chinese Coral Northwood #708 candlesticks, pair—not iridized
375. Chinese Coral Northwood 9 1/2" flared bowl w/ pleated interior—not iridized
376. Chinese Coral Northwood candy jar, no lid

👉 Call Today To Sell Your Fine Items

660-882-5292 Day  
660-882-5283 Evening

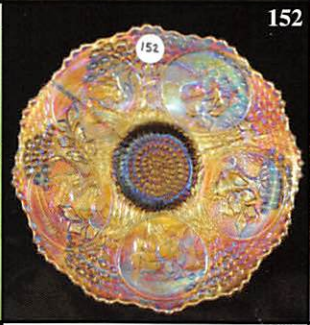
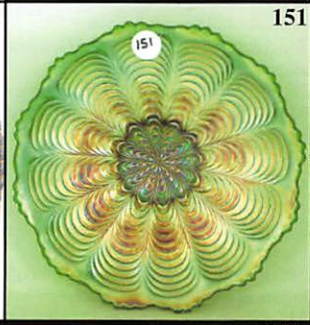
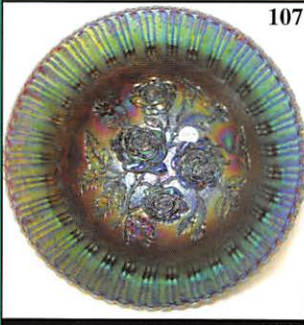
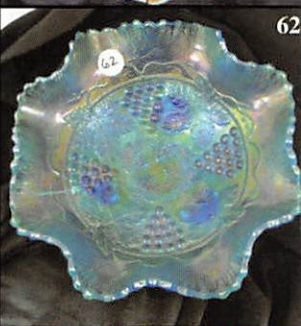
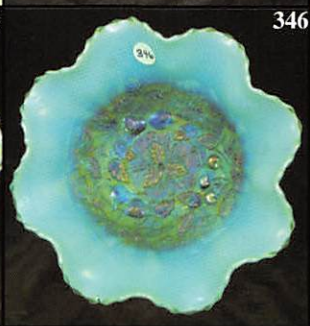
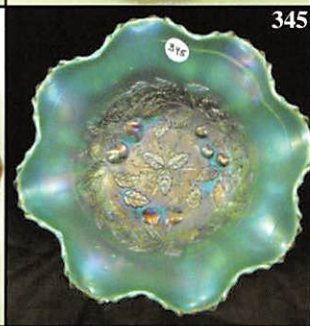
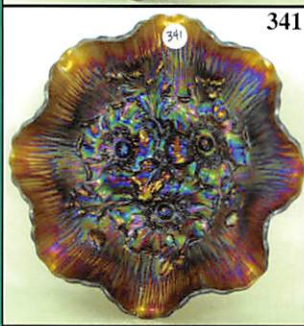
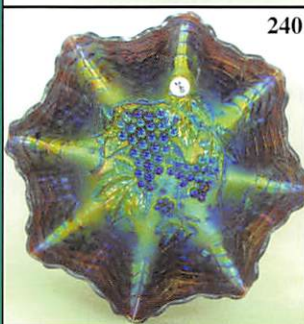
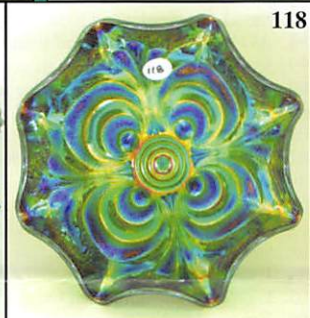
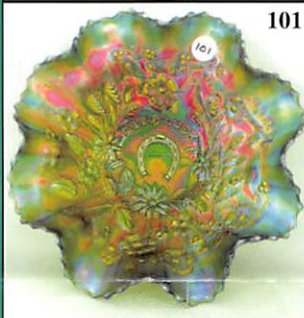
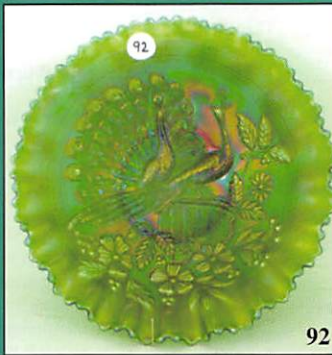
# TERRIFIC CARNIVAL

Saturday, June 12<sup>th</sup>, 2010

Friday Preview : June 11<sup>th</sup> - 12:00 Noon

Held at The Mickey Reichel Auction  
1440 Ashley Road •  
Photo tour at WWW.MICKEYREICHEL.COM

We are proud do to the Living Estate Auction of  
Vaughan of Pittsburg, Kansas. A Hint-Do  
thing. COLOR, COLOR And More



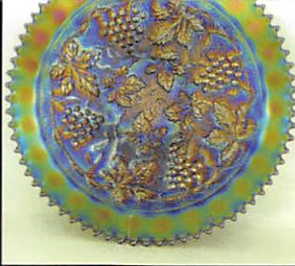




301



302



304



331



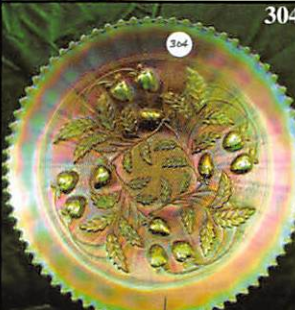
236



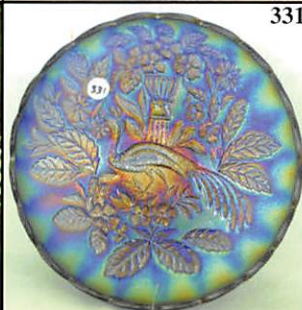
303



303



304



331



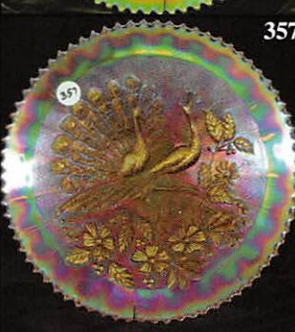
343



355



356



357



358

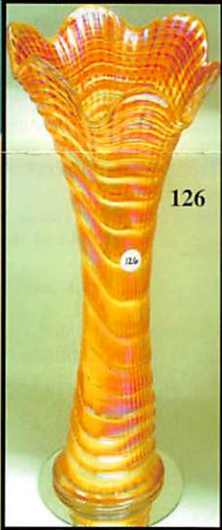


362



120

120



126



165



166



167



168



169

☛ **Make Reservations EARLY** at  
 one of these local motels:  
**Days Inn: 660-882-8624**  
**Comfort Inn: 660-882-5317**  
**Super 8: 660-882-2900**  
**Holiday Inn: 660-882-6882**

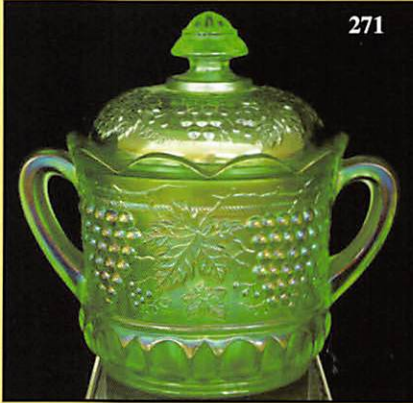
**Mickey Reichel Auction Center**  
 1 Mile North of I-70 on Hwy. 5, Exit 101,  
 Boonville, Missouri • 20 Miles West of  
 Columbia, MO on I-70



**TERMS:** Cash or Good Check,  
 VISA and MasterCard accepted.



4% Clerking Fee on all purchases except for  
 payment of cash or check.  
 Proper I.D. required.

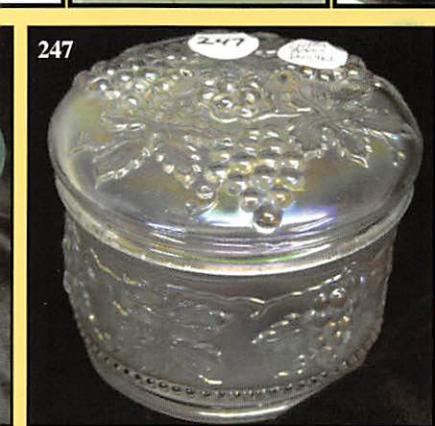
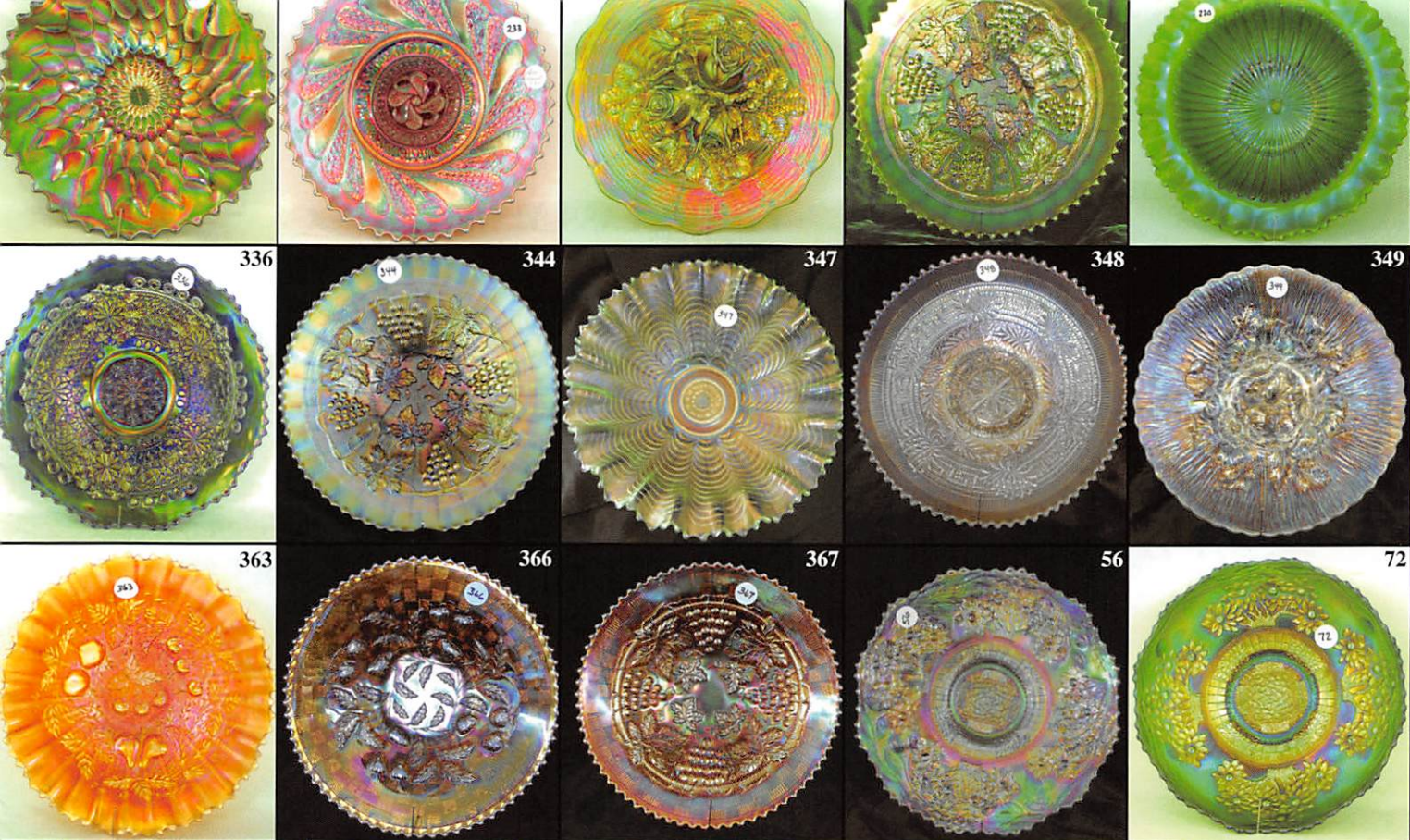


271



20

**\*\*\* No return on any items once they leave \*\*\*  
 (No Exceptions) \*\*\***



★★★NO BUYERS PREMIUM★★★

**ABSENTEE BID POLICY:**  
**PLEASE NOTE:** There is a \$6 handling charge for each successful bid which will be added to the selling price for all write-in bids. This is in addition to the cost of postage, insurance and packing. Your write-in bid will be entered just as if you are present and bidding. **Successful bidders will be notified in 1 to 3 days by the auctioneer (so be sure to include your phone number).** Direct mail bids to Auctioneer Mickey Reichel, 18350 Hunters Ridge Ct., Boonville, MO 65233-2971. Terms: Cash or Check accepted with proper I.D. and Social Security Number and References. Announcements made day of the auction supercede all printed material. Not Responsible for Accidents or Sold Items. **Call in Bids before Auction Welcome!**

☛ Call for additional information: 660-882-5292 days or 660-882-5283 evenings before 9:00 p.m.

FAX: 660-882-5292  
 (evening hours start FAX transmission after beep)  
 E-mail: [mreichel@AWK-SHN.com](mailto:mreichel@AWK-SHN.com)  
 Web Site: [www.awk-shn.com](http://www.awk-shn.com)

the Auction Center

SEE REVERSE FOR DETAILS