

- \_\_\_\_\_ 1. Imperial Mini Morning Glory 5" vase, marigold
- \_\_\_\_\_ 2. **Imperial Smooth Panels 4 1/2" vase, clambroth, 5" opening**
- \_\_\_\_\_ 3. Imperial Morning Glory 7 1/2" vase, marigold
- \_\_\_\_\_ 4. **Imperial Curled Rib 8" JIP vase, marigold, radium and dark**
- \_\_\_\_\_ 5. Marigold 8" panelled or flute vase
- \_\_\_\_\_ 6. **Imperial Ripple 7 3/4" Ripple vase, amber...base nick**
- \_\_\_\_\_ 7. Imperial Octagon 8" vase, old and pretty
- \_\_\_\_\_ 8. **Imperial Beaded Bullseye 8 1/4" vase, dark, dark marigold, nice!**
- \_\_\_\_\_ 9. Imperial Ripple 8 1/4" Ripple vase, purple
- \_\_\_\_\_ 10. **Imperial Ripple 10" Ripple vase, marigold**
- \_\_\_\_\_ 11. Imperial Ripple 11 1/2" vase, marigold
- \_\_\_\_\_ 12. **Imperial Morning Glory 14 1/4" vase, marigold, uncommon size**
- \_\_\_\_\_ 13. Fenton April Showers 8" vase, cobalt blue, Peacock tail interior
- \_\_\_\_\_ 14. **Fenton Fine Rib 10" vase, blue**
- \_\_\_\_\_ 15. Fenton Diamond and Rib 10" vase, purple, tulip top
- \_\_\_\_\_ 16. **Fenton Long Thumbprint 10 1/4" vase, amethyst**
- \_\_\_\_\_ 17. Fenton April Showers 10 1/2" vase, marigold, chip on flame
- \_\_\_\_\_ 18. **Fenton Long Thumbprint Hobnail 10 1/2" vase, amethyst**
- \_\_\_\_\_ 19. Northwood green Tree Trunk Vt. 8" vase
- \_\_\_\_\_ 20. **Northwood purple Tree Trunk Vt. 9" vas, no iridescence on outside-cool looking**
- \_\_\_\_\_ 21. Northwood purple Diamond Point 10" vase
- \_\_\_\_\_ 22. **Northwood russet Thin Rib 11 1/4" vase**
- \_\_\_\_\_ 23. Northwood russet Four Pillars 10 3/4" vase, base chipped
- \_\_\_\_\_ 24. **Northwood green Tree Trunk 12 3/4" mid-size vase, quite pretty!**
- \_\_\_\_\_ 25. G Fenton Ten Mums 9" 3 in 1 edge, very colorful example
- \_\_\_\_\_ 26. **B Fenton Chrysanthemum/Windmill 10 1/2", ruffled, ball ftd bowl, outstanding!**
- \_\_\_\_\_ 27. B Fenton Orange Tree 8" ICS bowl, beguiling color
- \_\_\_\_\_ 28. **G Fenton Autumn Acorns 8 1/2" ruffled bowl**
- \_\_\_\_\_ 29. A Fenton Feathered Serpent 10 1/2" ruffled bowl, lovely satin finish
- \_\_\_\_\_ 30. **G Fenton Thistle 8 1/2", 3 in 1 edge bowl**
- \_\_\_\_\_ 31. A Fenton Vintage 8" CRE bowl, attractive color
- \_\_\_\_\_ 32. **G Fenton Captive Rose 8" CRE bowl, extra pretty**
- \_\_\_\_\_ 33. G Fenton Stag and Holly 8" ICS, spat ftd bowl
- \_\_\_\_\_ 34. **A Fenton Stag and Holly 7 1/2" round, flared, spat ftd. nut bowl**
- \_\_\_\_\_ 35. Pumpkin M Fenton Peacock at Urn 8 1/2" ruffled bowl
- \_\_\_\_\_ 36. **B Fenton Peacock at Urn 8 1/4" ICS bowl, scarce shape**
- \_\_\_\_\_ 37. Superb M Fenton Peacock at Urn 9" plate, top notch piece
- \_\_\_\_\_ 38. **Electric B Fenton Holly 8" ICS bowl, colors galore**
- \_\_\_\_\_ 39. M Fenton Cherry Chain 10" low ICS bowl, exceptional and how many have you seen?
- \_\_\_\_\_ 40. **B Fenton Persian Medallion 10 1/2" chop plate, very nice and always in demand**
- \_\_\_\_\_ 41. Rich M Fenton Cherry Chain 9 1/2" ruffled bowl
- \_\_\_\_\_ 42. **B Fenton Persian Medallion 8", 3 in 1 edge bowl, just delightful iridescence**
- \_\_\_\_\_ 43. G Fenton Lotus and Grape 8 1/2" ruffled bowl, also has great color
- \_\_\_\_\_ 44. **M Fenton Stag and Holly 8" ICS bowl, spat ftd, has interior fracture**
- \_\_\_\_\_ 45. A Fenton Captive Rose 8 1/2" ruffled bowl, base chip
- \_\_\_\_\_ 46. **M Fenton Holly 9 1/2" plate, pretty yellows and greens**
- \_\_\_\_\_ 47. G Fenton Heart and Vine 8 1/4" ICS bowl, lots of blues
- \_\_\_\_\_ 48. **B Fenton Two Flowers 10 1/4", ball ftd, ruffled bowl**
- \_\_\_\_\_ 49. Pastel M Northwood stippled Peacocks PCE bowl, champagne look
- \_\_\_\_\_ 50. **P Northwood Peacocks PCE bowl**
- \_\_\_\_\_ 51. G N Grape and Cable PCE bowl, very pretty
- \_\_\_\_\_ 52. **BA N Three Fruits 8 1/2" plate, smooth exterior, colorful**
- \_\_\_\_\_ 53. P N Three Fruits Medallion 8 1/2" ruffled bowl, pleasing color
- \_\_\_\_\_ 54. **M N Strawberry PCE bowl, BW exterior**
- \_\_\_\_\_ 55. P N Wishbone footed, ruffled bowl
- \_\_\_\_\_ 56. **B N stippled Good Luck PCE bowl, very desirable**
- \_\_\_\_\_ 57. M N Grape and Cable Vt. 9" plate
- \_\_\_\_\_ 58. **G N Strawberry 9 1/4" plate, fuschias and greens**
- \_\_\_\_\_ 59. P N stippled Three Fruits 9" plate, multi electric
- \_\_\_\_\_ 60. **Elec P N Good Luck PCE bowl**
- \_\_\_\_\_ 61. A N Grape Leaves 9 1/4" ruffled bowl
- \_\_\_\_\_ 62. **P N Grape and Cable 8 3/4" bowl, striking color, plain back**
- \_\_\_\_\_ 63. G N Grape and Cable 8 1/2" plate
- \_\_\_\_\_ 64. **P N Rosette 9", footed, ruffled bowl, not frequently seen and pretty**
- \_\_\_\_\_ 65. A N Wishbone 8 1/4" footed, ruffled bowl
- \_\_\_\_\_ 66. **G N Wishbone 8 1/2" footed, ruffled bowl, scarce color**
- \_\_\_\_\_ 67. G N Wild Strawberry 7 1/2" single handgrip plate, vibrant colors
- \_\_\_\_\_ 68. **M N Three Fruits 9" plate, blues and pinks**
- \_\_\_\_\_ 69. P N Grape and Cable cup and saucer
- \_\_\_\_\_ 70. **B N Peacock at Urn 5 1/2" ICS sauce bowl, electric**
- \_\_\_\_\_ 71. P N Peacock at Urn 5 3/4" ICS sauce bowl, a multitude of colors
- \_\_\_\_\_ 72. **P N Bushel basket, round**
- \_\_\_\_\_ 73. Ice G N Peacocks 9 1/8" plate, yellows and purples
- \_\_\_\_\_ 74. **M N Rose Show Vt. 8 1/2" ruffled bowl, dark and nice**
- \_\_\_\_\_ 75. G N Good Luck ruffled bowl, very attractive colors
- \_\_\_\_\_ 76. **G N Good Luck PCE bowl, pretty blue center**
- \_\_\_\_\_ 77. M N Good Luck ruffled bowl, rib exterior
- \_\_\_\_\_ 78. **P N Good Luck ruffled bowl, multi-electric hues, rib exterior**
- \_\_\_\_\_ 79. B N Good Luck PCE bowl, wonderful electric colors, rib exterior
- \_\_\_\_\_ 80. **M N Wishbone 8 1/2" footed, ruffled bowl, great pastels**
- \_\_\_\_\_ 81. Scarce B N stippled Three Fruits Medallion ruffled bowl, boy is this nice
- \_\_\_\_\_ 82. **Awesome Pastel M N Peacocks ruffled bowl, birds have tremendous color**
- \_\_\_\_\_ 83. M Fenton Grape and Cable 7 1/2" ruffled bowl, astonishing pastels, especially for Fenton
- \_\_\_\_\_ 84. **P N Poppy Variant 7 1/2" ruffled bowl, extra nice hues**
- \_\_\_\_\_ 85. Imperial Mini Morning Glory 6 1/2" vase, marigold
- \_\_\_\_\_ 86. **Imperial Mini Morning Glory 8" vase, marigold**
- \_\_\_\_\_ 87. Imperial Ripple 10" vase, marigold
- \_\_\_\_\_ 88. **Imperial Smooth Panels 11" vase, marigold top over clear base**
- \_\_\_\_\_ 89. Imperial Smooth Panels 11" vase. pastel marigold over clear base
- \_\_\_\_\_ 90. **Imp Curled Rib 9 3/4" JIP vase, marigold**
- \_\_\_\_\_ 91. Dugan Beauty 8 1/2" vase, marigold and exceptionally nice
- \_\_\_\_\_ 92. **Dugan Lined Lattice 8 1/2" vase, purple, electric highlights**
- \_\_\_\_\_ 93. Dugan Wide Rib 9" stick vase, soft marigold
- \_\_\_\_\_ 94. **Dugan Wide Rib 9 1/4" stick vase, pumpkin marigold**
- \_\_\_\_\_ 95. Dugan Target 9 3/4" vase, marigold
- \_\_\_\_\_ 96. **Dugan Pulled Loops 10 1/2" vase, peach opal, very fine example**
- \_\_\_\_\_ 97. Fenton Panelled Diamonds and Bows 8 1/2" tall vase, dark marigold, small chip on base
- \_\_\_\_\_ 98. **Fenton Fine Rib 9 1/4" vase, marigold**
- \_\_\_\_\_ 99. Fenton Diamond and Rib 10 1/2" vase, green
- \_\_\_\_\_ 100. **Fenton Fine Rib 12 1/4" vase, deep blue**

101. Fenton Diamond and Rib 11 1/2" vase, amethyst
- 102. Fenton April Showers 10 3/4" vase, pretty green, Peacock tail interior**
103. Fenton April Showers 10 3/4" vase, superb blue example
- 104. Fenton April Showers 11 1/2" vase, blue, Peacock tail interior, also pretty**
105. Fenton Long Thumbprint Hobnail 12 1/4" vase, green
- 106. Fenton Fine Rib 16 1/4" vase, blue, wide and pretty opening**
107. Fenton Fine Rib 16 1/2" vase, marigold
- 108. Fenton Fine Rib 16 1/2" vase, blue**
109. M Dugan Question Marks stemmed bonbon, dark, dark, dark
- 110. PO Dugan Bells and Beads 7", crimped edge bowl**
111. PO Dugan Cherries 7", ten ruffle bowl, plain interior, footed
- 112. M Dugan Double Stem Rose 8 1/2" round bowl**
113. Electric P Dugan Cherries 9 1/2" ruffled bowl, Jewelled Heart exterior, a prize!
- 114. W Dugan Fanciful 9", ten ruffled bowl, very pretty pastels**
115. A N Acorn Burrs tumbler
- 116. P Dugan Peacock at Fountain tumbler**
117. B Dugan Peacock at Fountain tumbler
- 118. Pumpkin M N Peacock at Fountain tumbler**
119. M Dugan Stork in the Rushes tumbler, very colorful
- 120. M Dugan Stork in the Rushes tumbler**
121. M Dugan Stork in the Rushes w/ Lattice Band tumbler
- 122. B Dugan Stork in the Rushes tumbler**
123. Rich M Imperial Grape tumbler
- 124. M Imperial Soda Gold tumbler, nice one**
125. M Imperial Fashion tumbler
- 126. M Fenton Fentonia tumbler, this is a nice tumbler**
127. M Imperial stippled Robin mug, lots of good iridescence
- 128. Pumpkin M Fenton Orange Tree standard size mug**
129. B Fenton Orange Tree shaving mug, radium
- 130. M Fenton Sailboats wine glass**
131. M N Daisy and Plume stemmed rosebowl
- 132. B Fenton Orange Tree stemmed sherbet, radium**
133. M Fenton Grape and Cable/Persian Medallion 10" ruffled fruit bowl, lots of pinks!
- 134. G Fenton Grape and Cable/Persian Medallion 10" ruffled fruit bowl**
135. M Fenton Orange Tree 10" ruffled fruit bowl, exceptionally nice
- 136. M Fenton Grape and Cable/Persian Medallion 10" ruffled fruit bowl**
137. Clambroth Fenton Holly 9 3/4" plate
- 138. B Fenton Ribbon Tie 9", 3 in 1 edge, low ruffled bowl**
139. M Fenton Holly 9 3/4" plate
- 140. M Fenton Dragon and Lotus 8 1/4" ICS bowl, good looking piece**
141. M Fenton Fantail 8 3/4" round bowl, radium and pretty
- 142. G Fenton Vintage 7 1/2" plate, radium**
143. A Fenton Captive Rose 8", 3 in 1 edge bowl
- 144. M Fenton Peacock and Grape 9", spat ftd plate, scarce**
145. B Fenton Heart and Vine 8 1/4", 3 in 1 edge bowl, nice shape and iridescence
- 146. M Fenton Heart and vine 9", six ruffle bowl, winning color**
147. A Fenton Thistle 8 1/2", 3 in 1 edge bowl, pretty satin hues
- 148. M Fenton Heart and Vine 8 1/2" ruffled bowl**
149. B Fenton Persian Medallion 8 3/4", six ruffle bowl
- 150. B Fenton Persian Medallion 10 1/2", six ruffle bowl, quite pretty**
151. B Fenton Persian Medallion 5 1/2" ICS bowl
- 152. M Fenton Little Flowers 5 1/4" round berry bowl, kinda neat**
153. M Fenton Persian Medallion 6 1/4", four sides up plate
- 154. A Fenton Persian Medallion 9", round, flared bowl, great shape and fine color**
155. M Imperial Grape 9" ruffled bowl
- 156. Radium M Imperial Heavy Grape 7" ruffled bowl**
157. B Fenton Orange Tree punch bowl, top only, great color if you have a base
- 158. B Fenton Orange Tree punch cups, 5 times \$**
159. P N Grape and Cable small size punch bowl, base and eight cups, vivid purple center
- 160. M Westmoreland Pearly Dots 9", 3 in 1 edge bowl**
161. Scarce M Fenton collar base Chrysanthemum/Windmill 9" ruffled bowl, pumpkin
- 162. Dark M Fenton Two Flowers 9 3/4", footed, ruffled bowl**
163. Nice M Fenton Holly 9" ruffled bowl
- 164. Aqua Fenton Grape and Cable 7 3/4" ruffled bowl, scarce base color**
165. B Fenton Autumn Acorns 9" ruffled bowl
- 166. G Fenton Autumn Acorns 8 1/2", 3 in 1 edge bowl, great blues**
167. A Fenton Autumn Acorns 8 1/2", 3 in 1 edge bowl
- 168. A Fenton Vintage 8 1/2", 3 in 1 edge bowl**
169. B Fenton Pine Cone 6 3/4" ICS bowl
- 170. A Fenton Stag and Holly 8", spat ftd, ruffled bowl, scarce in amethyst**
171. A Fenton Captive Rose 8 3/4" ruffled bowl
- 172. Deep B Fenton Dragon and Lotus 8 3/4" ruffled bowl, very nice, colorful**
173. B Fenton Stag and Holly 10 1/4", ball ftd, ICS bowl
- 174. B Fenton Holly JIP 6" hat, sparkling color**
175. M Fenton Holly 7", 2 sides up hat
- 176. B Fenton Peacock Tail 6 1/4" ruffled hat**
177. B Fenton Peacock at Urn ruffled compote
- 178. G Fenton Coin Dot rosebowl, scarce and lovely**
179. B Fenton Blackberry Open Edge 6 1/4" ruffled hat
- 180. M Fenton Sailboats 6 1/4" ruffled bowl, as fine as these come**
181. M Wide Rib 8" stick vase, marigold
- 182. Dugan Beauty 9" stick vase, marigold**
183. Dugan Spiralex 11 1/4" vase, peach opal
- 184. Northwood Thin Rib 8" jester cap (or JIP) vase, purple, scarce**
185. Imperial Curled Rib 10 1/4" JIP vase, marigold
- 186. Imperial Smooth Panels 10 1/4" vase, marigold, Iron Cross mark**
187. Imperial Ripple 13" vase, rich marigold
- 188. Fenton Fine Rib 10" vase, marigold**
189. Fenton April Showers 10" vase, blue, Peacock Tail interior
- 190. Northwood Diamond Point 9" vase, purple**
191. Northwood Fine Rib 9 1/2" vase, green with nice marigold overlay
- 192. Northwood Thin Rib 10" vase, dark marigold**
193. Northwood Tree Trunk 10 1/2" vase, dark purple, beautiful
- 194. Northwood Flute 12 3/4" mid-size vase, marigold**
195. Northwood Tree Trunk 11 3/4" mid-size vase, purple
- 196. Northwood Tree Trunk 12 1/2" mid-size vase, purple**
197. Scarce G Fenton Fluffy Peacock 7 pc water set, one tumbler has small chip
- 198. M Northwood Grape Arbor tankard pitcher and eight tumblers**
199. P Northwood Dandelion 7 pc water set
- 200. P Northwood Oriental Poppy 7 pc water set, beautiful pitcher**
201. P Northwood Acorn Burrs water pitcher, tough to find
- 202. B Fenton Peacock at Urn 9" ruffled bowl, attractive coloration**
203. B Fenton Peacock at Urn 9" ruffled bowl, totally different irid. treatment than 202!
- 204. G Fenton Peacock at Urn 8" ICS bowl, scarce shape and color**

\_\_\_\_\_ 205. A Fenton Persian Medallion 10 1/4" ruffled bowl

\_\_\_\_\_ 206. G Fenton Concord 8" ICS bowl

\_\_\_\_\_ 207. B Fenton Holly 9 1/4" plate

\_\_\_\_\_ 208. A Fenton Captive Rose 9 1/4" plate, ~~seam~~ and nice

\_\_\_\_\_ 209. B Fenton Captive Rose 9 1/4" plate, ~~seam~~

\_\_\_\_\_ 210. B Fenton Holly 9" ruffled bowl

\_\_\_\_\_ 211. B Fenton Holly 8 1/4" ICS bowl, radium with great color

\_\_\_\_\_ 212. G Fenton Holly 9" ruffled bowl, good color

\_\_\_\_\_ 213. M Fenton Water Lily 8 1/2", round, ball ftd bowl

\_\_\_\_\_ 214. B Fenton Autumn Acorns 8 3/4" ruffled bowl

\_\_\_\_\_ 215. M Fenton Two Flowers 9 3/4" ruffled bowl, dark and nice

\_\_\_\_\_ 216. W Fenton Orange Tree 8" ICS bowl, sweet

\_\_\_\_\_ 217. M Curved Star/Headdress 9 3/4" ruffled bowl

\_\_\_\_\_ 218. Lt Amber? Fenton Stag and Holly 10 1/2", ball ftd, ICS bowl, unusual base color

\_\_\_\_\_ 219. B Fenton Ribbon Tie 9 1/4", 3 in 1 edge, low ruffled bowl, very beautiful

\_\_\_\_\_ 220. W Fenton Leaf Chain 9 1/4" plate, nice purples

\_\_\_\_\_ 221. M Fenton Feathered Serpent 10 1/2" ruffled bowl, gorgeous satin

\_\_\_\_\_ 222. W Fenton Orange Tree 9 1/2" plate, another winner

\_\_\_\_\_ 223. B Fenton Thistle 7 3/4" ICS bowl

\_\_\_\_\_ 224. PO Dugan Wishbone and Spades 6" ruffled bowls, pair, one chipped, sells as one lot

\_\_\_\_\_ 225. Electric P Imperial Scroll Embossed 7 3/4" ruffled bowl, File exterior

\_\_\_\_\_ 226. M Dugan Cherries 8", ten ruffle, footed bowl

\_\_\_\_\_ 227. Radium M Dugan Cosmos Vt. 10" ruffled bowl, wow!

\_\_\_\_\_ 228. M Mlbg Rosalind 10" ruffled bowl, great example

\_\_\_\_\_ 229. Radium P Mlbg Whirling Leaves 9 1/2" ruffled bowl, excellent in all respects

\_\_\_\_\_ 230. P Mlbg Rays and Ribbons 9 3/4", 3 in 1 edge bowl, truly exceptional

\_\_\_\_\_ 231. Killer G Mlbg Nesting Swan 10" ruffled bowl, fabulous blues

\_\_\_\_\_ 232. A Mlbg Peacocks 5 3/4" ICS bowl

\_\_\_\_\_ 233. M Mlbg Bougonniere 6" ruffled compote

\_\_\_\_\_ 234. Radium P Mlbg Nesting Swan 9 1/2" ruffled bowl

\_\_\_\_\_ 235. M Mlbg Blackberry Wreath 10 1/4" ruffled bowl, super nice

\_\_\_\_\_ 236. A Mlbg Trout and Fly 8 1/2" ICS bowl, one of the best I've seen recently

\_\_\_\_\_ 237. P N stippled Three Fruits 8 3/4" ruffled bowl, beautiful multi-color gem

## SPECIAL NOTE:

### NO SUNDAY CALLS, PLEASE!

Winning Absentee Bidders will be contacted Monday through Wednesday of the week following the Auction!

Thank You!

## SEND ALL MAIL TO:

18350 Hunters Ridge Ct.

Boonville, MO 65233

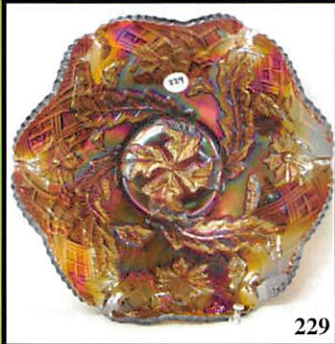
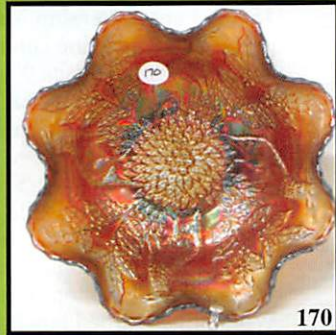
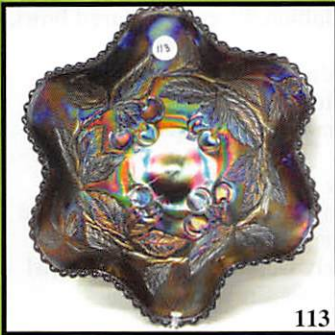
**WATCH:**  **Web Site: [www.AWK-SHN.com](http://www.AWK-SHN.com)**

238. Elec P N Three Fruits Medallion ruffled bowl  
239. FANTASTIC B N Good Luck ruffled bowl, my favorite piece in the sale, WHEW!!!  
240. P N Three Fruits Medallion 8 3/4" ruffled bowl, great eye appeal  
241. A N Strawberry 8 3/4" ruffled bowl, BW exterior  
242. P N Strawberry PCE bowl, luscious colors  
243. P N Beaded Cable rosebowl, multi electric  
244. A N Three Fruits Medallion 8 3/4" ruffled bowl, very nice  
245. AO N Bushel basket, round, always in demand  
246. P N Grape and Cable covered compote, but no cover-base only  
247. P N Grape and Cable 9" round master berry bowl, lots of purples on exterior  
248. P N Grape and Cable breakfast creamer and sugar, well-matched  
249. G N Grape and Cable 10" ruffled bowl  
250. Red Amberina Fenton Holly 6", JIP, CRE hat  
251. Red Fenton Holly 6 1/2" ruffled hat, oh so nice  
252. Vas Fenton Blackberry Open Edge 6 3/4" basket, two sides up  
253. M N Good Luck ruffled bowl, great colors  
254. A N Three Fruits PCE bowl, BW exterior  
255. Rich M N stippled Three Fruits plate  
256. B N Peacocks 9" plate, blasting electric blues  
257. G N stippled Grape and Cable Vt. 9" plate, a show stopper  
258. B N stippled Three Fruits 9" plate, electric highlights  
259. P N Wishbone 8 1/2", footed, tri-corner plate, scarce, but sadly, has interior fracture  
260. Electric P N Three Fruits Medallion 8 1/2" ruffled bowl  
261. A N Grape and Cable 6 1/2" ruffled berry bowl  
262. M N Peacock at Fountain 4 3/4" round berry dish  
263. M N Peacock at Fountain tumbler  
264. A Scales 6" plate  
265. M Dugan Persian Garden 6" plates, choice A or B  
266. P N Grape and Cable stemmed sherbets, 6 times \$  
267. G N Blossomtime ruffled compote, pink and green hues  
268. G Fenton Acorn 7 1/2" ruffled bowl, scarce color  
269. G N Stippled Rays 9 1/4" ruffled bowl, pretty inside and out  
270. Powder B Fenton Cherry Circles 8 3/4" bonbon, very scarce color  
271. Awesome Electric P Imperial Star of David 8 1/4" ruffled bowl  
272. G Fenton Blackberry Open Edge 6" ruffled hat, alluring colors in center  
273. A Fenton Vintage fernery, scarce and very pretty  
274. P Imperial Diamond Lace 9 3/4" ruffled bowl  
275. PO Dugan Fishnet center lily, wonderful example, got the epergne?  
276. G N Wide Panel side lilies, choice A or B  
277. M Fenton Panther 5 1/2" ruffled sauce bowl, pink panthers  
278. G Fenton Ribbon Tie 8 3/4" ruffled bowl  
279. M Fenton Peacock Tail 8 1/4" 3 in 1 edge bowl, excessively nice  
280. A Fenton Stippled Rays 5 3/4" ruffled bowl, unusual size  
281. A N Rosette 7 3/4" footed, ruffled bowl  
282. A Fenton Coin Dot 8" ruffled bowl  
283. A N Fruits and Flowers 6" ruffled bowl, very nice example  
284. A Fenton Vintage 7" ruffled bowl  
285. M Fenton Holly 8" ICS bowl  
286. G N Leaf and Beads 8" tri-corner, footed bowl, Rayed interior  
287. Pumpkin M Fenton Dragon and Lotus 8 1/2" ruffled bowl

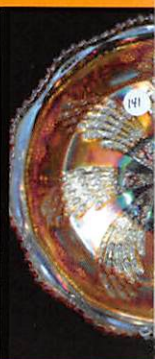
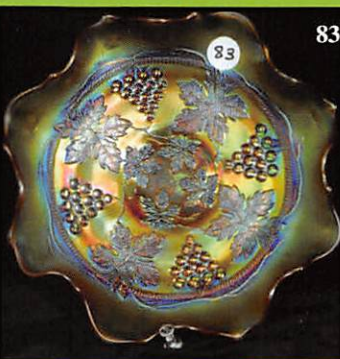
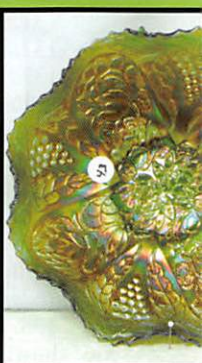
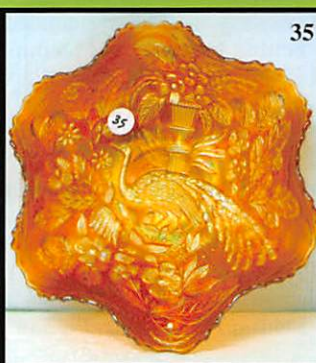
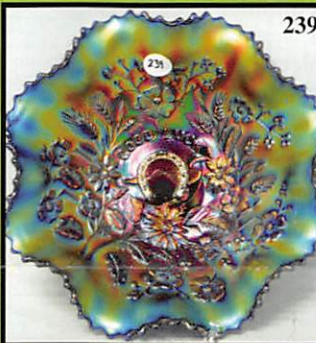
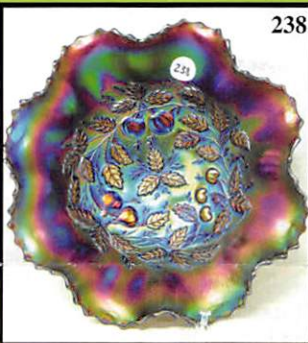
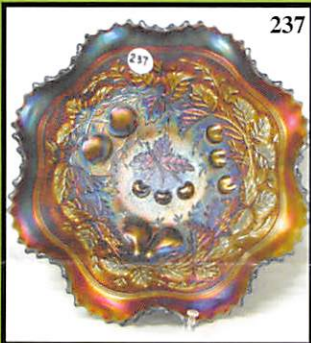
288. M Fenton Grape and Cable 7 3/4" ball ftd bowl  
289. Dark M N Singing Birds mug  
290. Rich M N Grape Arbor tumbler  
291. Superb M N Grape Arbor tankard water pitcher  
292. Radium Elec P Imperial Scroll Embossed 5 1/2" ruffled bowl, File exterior  
293. Electric P Dugan Cherries 8", ten ruffle, footed bowl, oh my!  
294. G N Three Fruits Medallion 8 3/4" ruffled bowl, scarce color and outstanding  
295. W Dugan Fanciful 8" ICS bowl, I think we've got a winner!  
296. Radium A Mlbg Blackberry Wreath 10" ICS bowl, uncommonly nice!  
297. Radium M Mlbg Rays and Ribbons 9 1/4" ICS bowl, scintillating  
298. Vas stretch U.S. Glass #315, 9 1/2" candlesticks, pair  
299. Great M N Rose Show 9 1/2" flat plate, tremendous color  
300. Lav N Dreibus Parfait Sweets double handgrip plate, a prize advertising piece  
301. Ice B Imperial 10 3/4" Open Rose plate, marked IG  
302. Cobalt B Imperial 10 3/4" Open Rose plate, marked IG and not iridized  
303. Smoke Imperial 10 3/4" Open Rose plate, marked IG  
304. M Imperial 10 3/4" Open Rose plate, marked IG  
305. Satin Milkglass 10 3/4" Open Rose plate, marked IG, not iridized  
306. Yellow Singleton Bailey 11 1/4" CRE plate, extremely nice and very limited edition  
307. Rosalene Fenton Holly 10 1/4" plate, not iridized, super nice  
308. P 1973 ICGA Town Pump Des Moines, IA convention souvenir 9 3/4" plate  
309. 1999 Woodsland Las Vegas convention souvenir 6" plate, made by Fenton  
310. B 1980 Cherokee Strip Museum, Alva, OK 8" plate, #179 of 310  
311. Scorching Amber Imperial Grape 9 piece water set, marked IG  
312. BA Fenton Peacock Garden 8" cylinder vase  
313. Amber Imperial Grape salt and pepper shakers, marked IG  
314. P Fenton Whirling Star 6 1/2" compote-contemporary  
315. P Singing Birds tumbler, w/ radium finish-contemporary  
316. B carnival breakfast creamer and sugar, contemporary  
317. P Smith glass Daisy and Button shoe, contemporary  
318. B Daisy and Button footed toothpick, signed with large D, contemporary  
319. P Smith glass Daisy and Button toothpick, contemporary  
320. Dark M Nautilus toothpick holder  
321. Tangerine Slag Swag and Bracket toothpick holder, made by Boyd, contemporary  
322. Swan paperweight, 4" tall, contemporary  
323. Soft blue Fenton 4 1/2" tall cat figurine, contemporary  
324. Stunning Pastel Marigold Imperial Smooth Rays 9 1/4" plate  
325 to 355 Miscellaneous carnival glass pieces to finish out the auction

👉 Call Today To Sell Your Fine Items

660-882-5292 Day  
660-882-5283 Evening



**CARNIVAL GLASS**  
Saturday, May 15<sup>th</sup>,  
Friday Preview : May 14<sup>th</sup> - 12:00 N  
Held at The Mickey Reichel Auction  
1440 Ashley Road  
Photo tour at WW  
*Beautiful Affordable*  
**John Fox Carnival Glass**



# GLASS AUCTION

2010 - 9:00 AM Sharp

Noon - 5:00 PM & 7:30 am Auction Day

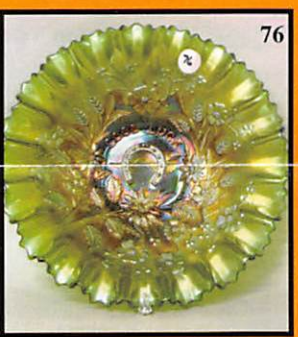
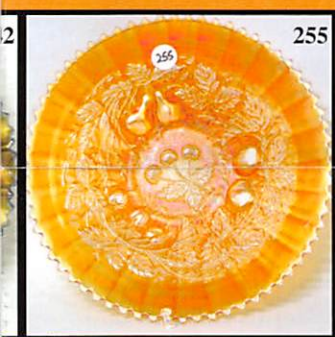
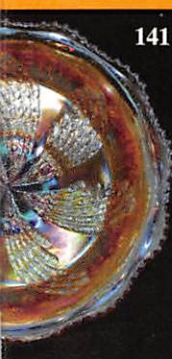
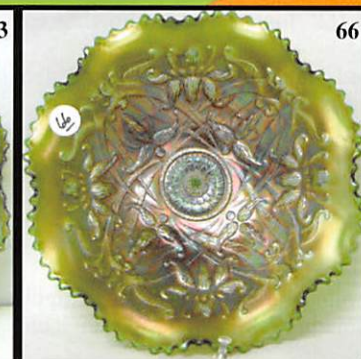
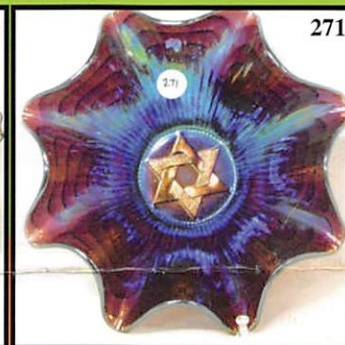
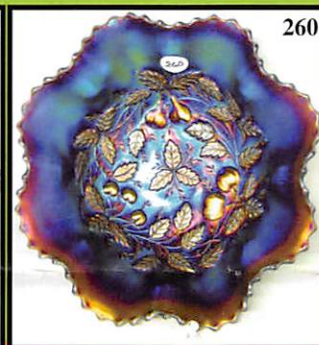
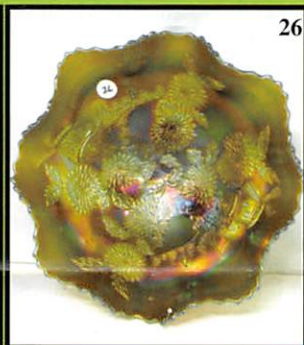
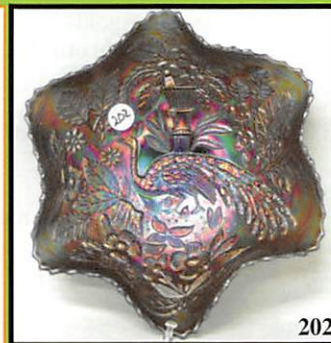
ion Gallery and Real Estate Center

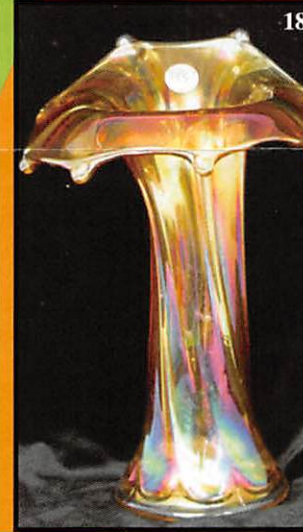
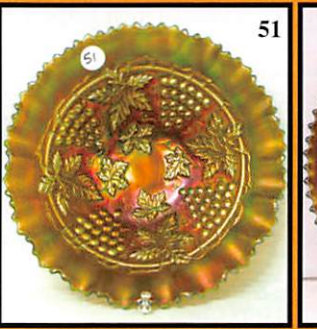
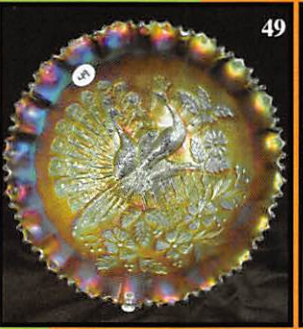
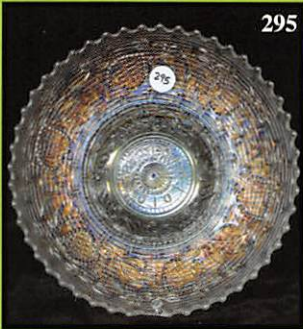
Boonville, Missouri

WWW.AWK-SHN.COM

able items from :

*Glass Estate of Kansas*





☛ **Make Reservations EARLY** at  
 one of these local motels:  
 Days Inn: 660-882-8624  
 Comfort Inn: 660-882-5317  
 Super 8: 660-882-2900  
 Holiday Inn: 660-882-6882

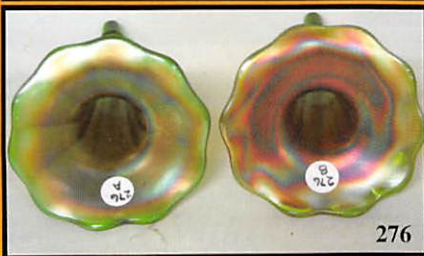
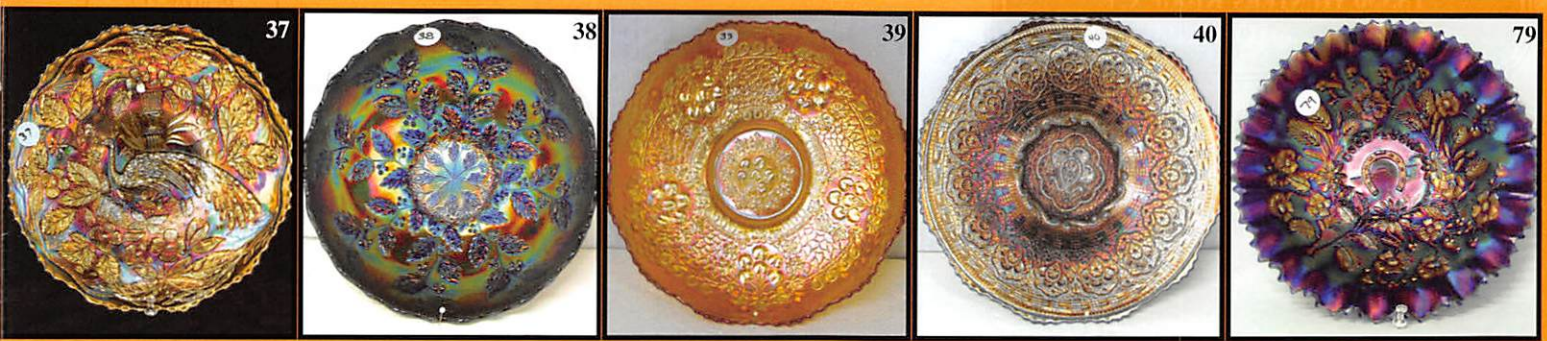
**Mickey Reichel Auction Center**  
 1 Mile North of I-70 on Hwy. 5, Exit 101,  
 Boonville, Missouri • 20 Miles West of  
 Columbia, MO on I-70

**TERMS:** Cash or Good Check,  
 VISA and MasterCard accepted.

4% Clerking Fee on all purchases except for  
 payment of cash or check.  
 Proper I.D. required.



\* \* \* *No return on any items once they leave*  
*(No Exceptions)* \* \* \*



★★★NO BUYERS PREMIUM★★★

**ABSENTEE BID POLICY:**  
**PLEASE NOTE:** There is a \$6 handling charge for each successful bid which will be added to the selling price for all write-in bids. This is in addition to the cost of postage, insurance and packing. Your write-in bid will be entered just as if you are present and bidding. **Successful bidders will be notified in 1 to 3 days by the auctioneer (so be sure to include your phone number).** Direct mail bids to Auctioneer Mickey Reichel, 18350 Hunters Ridge Ct., Boonville, MO 65233-2971. Terms: Cash or Check accepted with proper I.D. and Social Security Number and References. Announcements made day of the auction supercede all printed material. Not Responsible for Accidents or Sold Items. **Call in Bids before Auction Welcome!**  
 ← Call for additional information: 660-882-5292 days or 660-882-5283 evenings before 9:00 p.m.

FAX: 660-882-5292  
 (evening hours start FAX transmission after beep)  
 E-mail: [mreichel@AWK-SHN.com](mailto:mreichel@AWK-SHN.com)  
 Web Site: [www.awk-shn.com](http://www.awk-shn.com)

the Auction Center

SEE REVERSE FOR DETAILS