

1. Vaseline Open Edge, 2-row JIP basket
2. Vaseline Fenton Flute 9" vase—seldom encountered
3. Vaseline Fenton Peacock at Urn ruffled compote
4. Grape and Cable bonbon, green, BW exterior
5. Wild Rose green nut bowl
6. Northwood Grape Leaves green ruffled bowl—Pretty inside and out
7. Daisy and Plume purple ruffled compote, plain interior
8. Northwood Smooth Rays card tray bonbon—amethyst
9. Grape and Cable Vt. 7 1/2" ruffled bowl—marigold
10. Millersburg Swirled Hobnail rosebowl, purple—electric highlights
11. Boutonniere ruffled compote, marigold, satin
12. Rays and Ribbons 9 3/4" crimped, ruffled bowl—Exceptionally nice radium example
13. Millersburg Mayan 8" ICS bowl, green, radium and nice
14. Millersburg Zig-Zag 9 3/4", 3 in 1 radium green bowl—Whew!
15. Rays and Ribbons 10" ruffled bowl, amethyst—Loaded with color, satin
16. Hobnail Variant 17" green vase, 4" base
17. Hobnail Variant 16 3/4" blue vase, 4" base—Beautiful multi-color irid.
18. Hobnail Variant 15 3/4" marigold vase, 4" base—Delightful pinks
19. Hobnail Variant 14 3/4" amethyst vase, 4" base—Radium electric dandy
20. Tree Trunk 11 3/4" purple mid-size vase, 6 1/2" opening—Color top to bottom!
21. Tree Trunk, squatty 7" purple vase—Super, has small base chip
22. Rich marigold Tree Trunk 9 1/2" vase—Pretty pastels
23. Northwood Graceful 5 1/2" green vase—Not often seen
24. Northwood Feathers 6 3/4" squatty green vase, starred base—Very attractive vase!
25. Scarce amethyst Holly 9 1/2" plate—Blues, pinks, greens
26. Persian Medallion blue 10 3/4" chop plate, flat, nice—Here's one that doesn't turn up often
27. Ski Star and Compass 11" purple, ruffled bowl—This is a honey!
28. Three Fruits stippled 9" pumpkin marigold plate
29. Captive Rose 9" plate, blue—Top notch color
30. Orange Tree 9 1/2" plate, trunk center, fabulous clambroth example
31. Holly ruffled compote, lavender base, nice
32. Marigold flashed cone shape 6" vase, floral pattern—Never seen one like it!
33. White, frosted, etched satin globe ceiling fixture—Quite nice and unusual
34. Brass type electric boudoir lamp with marigold carnival bulb center
35. Killer purple Grape and Cable ruffled bowl with electric blue iridescence—Fantastic!
36. Grape and Cable Vt. 9 1/4" flat plate—Only way to describe it is electric green
37. Scroll Embossed amber ruffled small compote—Super radium iridescence
38. Scroll Embossed purple ruffled small compote
39. Scroll Embossed 9" round, flared, marigold bowl—File exterior
40. Scroll Embossed ruffled large compote—RARE violet color and electric!
41. Scroll Embossed 8" ruffled, purple bowl, starred base—Splendid electric
42. Scroll Embossed 7" round, scalloped, purple bowl—Wonderful
43. Imperial 474 goblet, 6 1/2" tall, marigold, scarce size
44. Scroll Embossed 8" round, flared, purple bowl—Lots of greens and yellows
45. Scroll Embossed 7 3/4" round, flared bowl. Radium electric purple, a gem!
46. Acanthus 9" deep ruffled bowl, exceptional smoke example!
47. Imperial six-sided dark marigold candlesticks, pair—Super, super!
48. Imperial delta base 9" candlesticks, smoke, pair—My are these nice!
49. Honey amber Fenton #449 8 1/2" stretch candlesticks, pair—Very rare and awesome!
- 49A. Blown marigold 5" candlesticks, pair, one with standing horse, one with mountain goat—Never seen anything quite like these—See photos!!
50. Pansy oval relish dish, shimmering pastel smoke
51. Pansy oval relish dish, deep, dark marigold

52. Pansy oval relish dish, green, base glows
53. Ripple 9" vase, pumpkin marigold, 3" base
54. Ripple 9" vase, radium pastel white, 2 1/2" base
55. Ripple 10 3/4" vase, electric purple like you wouldn't believe!
56. Ripple 10" vase, incredibly dark marigold, oh my!
57. Ripple 10 1/2" vase, breath-taking electric amber color
58. Freefold 12" radium marigold vase—5 3/4" opening
59. Imperial Jewels 6 1/2" purple vase, Iron Cross Mark—Exquisite!
60. Imperial Jewels 5" purple vase with cuspidor top, Iron Cross Mark—Super nice!
61. Imperial Zipper Loop 5 1/2" marigold finger lamp—Find one with better color!
62. Imperial Zipper Loop 9 1/2" kerosene lamp, smoke—Outstanding color top to bottom
63. Imperial Zipper Loop 9" kerosene lamp, marigold, superb
64. Amber Imperial Heavy Grape chop plate—Blues and purple deluxe!
65. Rib and Panel 8 1/2" blown vase, marigold
66. Imperial Heavy Grape 11 3/8" chop plate, purple—Top of the line color and condition!
67. Mini Morning Glory 6" vase, pumpkin marigold—Lots of pinks
68. Hattie 10 1/4" chop plate, radium marigold—Dark, colorful, simply outstanding
69. Thumbprint and Ovals 5 1/2" purple vase, electric hues inside and out
70. Hex 7" candlesticks, pair, dark, dark marigold
71. Rococo marigold vase
72. Dark marigold Hobstar Flower ruffled compote
73. Marigold 5" miniature vase, enameled floral design—Ex Britt collection
74. Marigold flashed 2 1/2" grape and leaf design toothpick holder—Ex Britt collection
75. Miniature marigold frosted w/ red comb, covered hen salt dish—Ex Britt collection
76. Diamond and Sunburst amethyst wine glasses—Sold as pair
77. Sapphire Stretch Fenton ashtray—Uncommon
78. Imperial Open Rose 9" plate, marigold, rainbow iridescence
79. Northwood sapphire stretch Optic Swirl 10 1/2" bowl w/ flattened rim
80. Rare sapphire blue round Bushel Basket
81. Sapphire Big Basketweave 9 1/2" vase—Oh so scarce
82. Blue Opal stippled Three Fruits ruffled bowl—Non iridized
83. Blue Opal Drapery 8" vase, very scarce—Non iridized
84. Tornado 6" purple vase—Scintillating color!
85. Tornado 6 1/2" green vase—Very desirable item
86. Grape and Cable hatpin holder, black amethyst—Wonderful color
87. Dugan Cherries 9 1/4" ruffled, collar base bowl, purple
88. Stag and Holly spatula footed ruffled bowl, pumpkin marigold
89. Petal and Fan 10 3/4" ruffled bowl, pastel peach opal with lovely pinks and blues
90. Apple Blossom Twigs 9" low ruffled bowl, scarce blue
91. Dugan Pony 8 1/2" ruffled bowl, amethyst—Above average example
92. Heart and Vine 8 1/2", 3 in 1 ruffled bowl, green—Neat shape
93. Fenton Lions ruffled bowl, blue
94. Mikado giant ruffled compote, marigold
95. Leaf and Beads rosebowl, pastel aqua opal—Quite lovely
96. Orange Tree footed fruit bowl, blue—Dark and nice
97. Peacock at Fountain footed fruit bowl, blue—Always in demand
98. Grape and Cable/Persian Medallion footed fruit bowl, marigold—Rich color, fine iridescence!
99. Dugan Peacock at Fountain 7 piece water set, blue
100. Ice Green Northwood Grape Arbor 7 pc water set—Only known set to be sold at auction. A unique opportunity to own this set, when will it be offered again. Rare and beautiful, top piece in auction! **TENNESSEE**
101. Three Fruits stippled plate, pumpkin marigold, delicious pinks
102. Imperial Three In One 9" ICS bowl, radium pastel marigold and a gem!
103. Persian Medallion card tray shape bonbon, marigold
104. Banded Grape mug, rich marigold
105. Palm Beach honey amber 4 3/4" berry bowl
106. Palm Beach 4" berry bowl, non-iridized, crystal, but has green and red handpainted design elements
107. Palm Beach 4 1/2" berry bowl, white w/ Gooseberry interior
108. Palm Beach cider pitcher, white, outstanding pastel colors
109. Persian Garden 6" ICS bowl, white

24,000

MICKEY REICHEL
ANTIQUÉ & AUCTION, L.C.
 18350 HUNTERS RIDGE CT.
 BOONVILLE, MO 65233-2971

PRESORTED
 FIRST CLASS MAIL
 US POSTAGE PAID
 SEDALIA, MO
 PERMIT 217

FIRST CLASS MAIL

RETURN SERVICE REQUESTED

110. Cherry Chain 6 1/2" plate, white, scarce
 111. Leaf Rays nappy, white
 112. Blackberry Banded ruffled hat, white, scarce color
 113. Peach covered sugar bowl, white with gold trim-Very nice
 114. Daisy and Drape vase, white, turned in top
 115. Bushel Basket, eight sided, white
 116. Northwood Peacocks 9" plate, white, smooth back
 117. Orange Tree loving cup, white-Frosty and in pristine condition
 118. Fine Cut and Roses rosebowl, ice blue, Fancy interior-A winner!
 119. Fine Cut and Roses rosebowl, lavender, plain interior
 120. Fine Cut and Roses rosebowl, marigold, plain interior
 121. Persian Medallion 6" plate, marigold, four sides up!
 122. Fenton Vintage Grape 6" tri-corner plate, marigold
 123. Grape and Cable whimsied nappy from punch cup, marigold
 124. Daisy Cut bell, marigold, pretty
 125. Beaded Shell mug, dark purple-Exceptional example
 126. Pastel Swan salt, purple, hard to find color
 127. Hearts and Flowers ruffled compote, pastel marigold
 128. Raspberry ruffled gravy boat, purple, super inside and out
 129. Rare green Two Fruits divided bonbon-Not many around
 130. Fenton Grape and Cable 6" nut bowl, powder blue-Heavy marigold overlay
 131. Leaf Chain 7 1/2" plate, blue
 132. Leaf Chain 7 1/2" plate, marigold
 133. Three Fruits stippled ruffled bowl, marigold, lush color
 134. Imperial Open Rose 9 1/4" plate, amber, gorgeous purple and blue iridescence
 135. Ripple 10 1/4" mid-size vase with 4" base, purple, sharp strike and superb color
 136. Vaseline Dragon and Lotus 9" ruffled bowl
 137. Imperial Lustre Rose footed centerpiece bowl, purple-Vibrant color!
 138. Millersburg Peacock at Urn 10" ICS bowl, purple-Impressive color
 139. Millersburg Peacock 10" ruffled master berry, radium green and gorgeous!
 140. Hearts and Flowers PCE bowl, white-Lots of blues
 141. Hearts and Flowers PCE bowl, rich marigold and very colorful
 142. Hearts and Flowers PCE bowl, ice green-Another top notch piece
 143. Hearts and Flowers ruffled compote, wonderful aqua opal example
 144. Northwood Butterfly bonbon, super marigold
 145. Grape Delight nut bowl, black amethyst-Electric blues and the feet are good!
 146. Grape and Cable bonbon, marigold
 147. Dugan Cherries footed, ten ruffle bowl, black amethyst-A beauty
 148. Three Fruits PCE bowl, marigold with excellent yellows and greens
 149. Flowers and Frames dome base 9 1/2", ten ruffle bowl, purple-Very pretty
 150. Flowers and Frames dome base, deep, ruffled bowl, peach opal
 151. Spectacular Holly and Berry ruffled nappy, electric purple
 152. Stippled Petal 9", CRE dome base plate peach opal-Uncommonly beautiful
 153. Honeycomb and Beads 7 1/4" ruffled bowl, purple-Choice, choice item!
 154. Grape and Cable Vt. 9" plate, marigold-A carnival glass classic
 155. Strawberry 7 3/4" single handgrip plate, purple-Amazing color, just the best!
 156. Strawberry 9" ruffled bowl, exquisite pastel marigold
 157. Diamond Lace water pitcher, electric purple-Usually found nice, but this one is a "12"
 158. Imperial Lead Luster 6 1/2" vase-Superb marigold overlay and the prettiest iridescence!
 159. Scroll Embossed 7 1/4" ruffle bowl, purple-Very scarce Hobstar and Tassle exterior-A Knockout!
 160. Imperial Poinsettia milk pitcher, marigold-Common as dirt, right? This thing is UNREAL, I dare someone to find me one better!
 161. Dugan Many Fruits punch bowl, base, six well-matched cups, truly outstanding marigold set
 162. Grape and Cable mid-size punch bowl, base, six cups, marigold-Super, yellows, pinks, blues
 163. Grape and Cable small size punch bowl and base, electric purple, interior flaws in bowl

164. Grape and Cable punch cups, purple-5 x \$
 165. Acorn Burrs punch bowl and base, green-Small chip on base of bowl, bit of spottiness inside
 166. Acorn Burrs punch cups, green-2 x \$
 167. Fabulous Many Fruits punch bowl and base, purple-Sizzling electric color, outstanding in all ways!
 168. Wreathed Cherry tankard water pitcher-Unbelievable pumpkin marigold
 169. Flute 8" water pitcher, teal stretch-Can't say I've seen one of these before and it's pretty!
 170. Flute stretch stemmed water goblets, teal-marked Fenton (1990's)-4 x \$
 171. Wreathed Cherry tankard water pitcher, fantastic white with red cherries and gold leaves
 172. Grape and Cable tankard water pitcher, pumpkin marigold, splendid!
 173. Fluffy Peacock water pitcher, super nice marigold
 174. Grape and Cable water pitcher, green with outstanding blue highlights, some would say emerald
 175. Electric purple Imperial Grape water pitcher-Vibrant, remarkable color
 176. Grape Arbor tankard water pitcher, marigold with great pinks and blues
 177. Peacock at Fountain water pitcher, pumpkin marigold-A head turner, ex-Joyce Seale collection
 178. Heavy Iris tankard water pitcher, purple, electric blues, yellows and purples
 179. Crystal Northwood Memphis butter dish lid-Not iridized
 180. Crystal Northwood Memphis 12 1/4" giant stemmed rosebowl-Not iridized. Only one I've seen!
 181. Crystal Northwood Memphis mustard jar, with lid and hallmarked spoon
 182. Crystal Northwood Memphis whiskey decanter with stopper-Not iridized
 183. Crystal Northwood Memphis 10 1/2" fruit bowl-Not iridized
 184. White Opal Northwood Leaf and Beads 9 1/2" tri-corner, CRE bowl-Not iridized
 185. Millersburg Courthouse ruffled bowl, purple-Crowd pleaser!
 186. Illinois Soldiers and Sailors Home plate, marigold, fantastic
 187. Australian Kangaroo 9 3/4", 16 ruffle master bowl, marigold-Top notch color
 188. Australian Kangaroo 5 1/2" berry bowl, marigold
 189. Orange Tree 9" ruffled bow, marigold, trunk center, superb example
 190. Strawberry 9" plate, great pastel marigold with yellows, greens and pinks
 191. Horse Medallion round, flared, footed bowl, dark marigold *NWT*
 192. Horse Medallion 7" ICS footed bowl, marigold, scarce shape!
 193. Horse Medallion 7 1/2", footed, ruffled bowl, marigold
 194. Fenton Peacock at Urn 9 1/2" plate, marigold-Loaded with blues and pinks
 195. Fenton Peacock at Urn 9" ruffled bowl, deep pumpkin marigold, great strike and color!
 196. Feather Stitch 9" ruffled bowl, marigold, pretty blue center
 197. Northwood Peacock at Urn 10 1/4" ICS master bowl, marigold with outstanding iridescence
 198. Rare green Northwood Peacock at Urn 10" ICS master bowl-Vibrant blues and purples
 199. Northwood Peacocks plate, stunning pastel marigold
 200. Stipple Strawberry 9" ruffled bowl, ice blue-ONLY undamaged one reported so far and just a knockout for color! Upgrade your collection with this piece!
 201. Greek Key dome base, ruffled bowl, green, pretty
 202. Northwood Beads 8", ten ruffle bowl, green-Uncommon and desirable
 203. Singing Birds mug, electric blue
 204. Singing Birds mug, marigold
 205. Singing Birds mug, purple
 206. Singing Birds mug, dark radium marigold
 207. Bushel Basket, round, blue w/ electric highlights
 208. Bushel Basket, round, dark marigold
 209. Bushel Basket, round, lavender and it's pretty
 210. Tree Trunk 12 1/2" mid-size vase, purple, 6 1/4" top-Colorful vase!
 211. Tree Trunk Vt. 10" vase, purple, silver mirrored finish
 212. Diamond Point 11 1/2" vase, green, golden irid.
 213. Thin Rib 10" vase, marigold, 5 1/2" flared top
 214. Drapery Variant 8 1/2" vase, marigold, scarce
 215. Northwood Stippled Rays 10" ruffled bowl, purple, BW exterior

775
1050

100

600

575

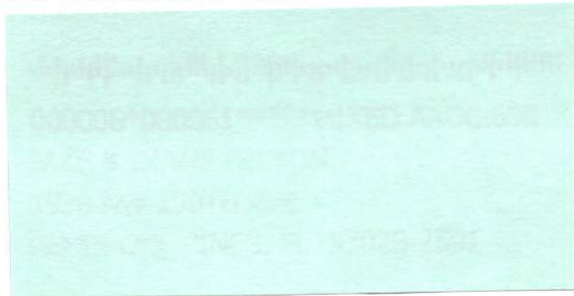
25600

9900

125



SPECIAL INVITATION TO:



www.AWK-SHN.com

- _____ 216. Grape and Cable 9" ruffled bowl, green, purple and blue hues
- _____ 217. Grape and Cable Vt. 8 1/2" ruffled bowl, purple
- _____ 218. Three Fruits Medallion spat ftd. ruffled bowl, purple
- _____ 219. Northwood Daisy and Plume 8 1/4" ruffled bowl w/ Smooth Rays interior, purple, scarce
- _____ 220. Double Loop open sugar bowl, aqua opal, radium, multi-color monster!
- _____ 221. Leaf and Beads rosebowl, aqua opal
- _____ 222. Beaded Cable rosebowl, aqua opal, collector favorite
- _____ 223. Northwood Peacocks ruffled bowl, pastel aqua opal-Splendid piece!
- _____ 224. Blackberry Spray 6" ruffled hat, aqua opal, scarce beauty
- _____ 225. Rose Show ruffled bowl, dark ice blue-Attractive
- _____ 226. Rose Show 9 1/2" plate, green w/ emerald highlights
- _____ 227. Rose Show 9 3/8" plate, beautiful pastel marigold, top notch!
- _____ 228. Rose Show 9 1/2" plate, electric blue all the way
- _____ 229. Rose Show ruffled bowl, frosty white w/ blue and yellow hues
- _____ 230. Rose Show ruffled bowl, green, lots of color on this one
- _____ 231. Rose Show ruffled bowl, incredible dark marigold-Wonderful
- 3000 _____ 232. Rose Show ruffled bowl, ice green opal-Prize Northwood piece!
- _____ 233. Imperial Grape tumbler, lime green

- _____ 234. Poppy Show 9 1/4" plate, purple with purple hues
- _____ 235. Poppy Show ruffled bowl, ice green with glowing blues
- _____ 236. Pine Cone 7 1/2" plate, pumpkin marigold and very, very nice
- _____ 237. Oval and Rounds 6 1/4" rosebowl, dark, beautiful marigold full of pinks
- _____ 238. Rare Green Peacock and Grape 9 1/2" plate-Not often seen
- _____ 239. Windmill milk pitcher, purple-Scarce little pitcher
- _____ 240. Novelty miniature 3 1/4" lamp, blue
- _____ 241. Hansen Tree Trunk toothpick holder, red
- _____ 242. Orange Tree 9" ruffled bowl, red, splendid color!
- _____ 243. Orange Tree shaving mug, red and looks red
- _____ 244. Dragon and Lotus 8 3/4" ICS bowl, red amberina
- _____ 245. Dragon and Lotus 8 1/4" ICS bowl, cobalt blue and has tremendous color
- _____ 246. Dragon and Lotus 9" ruffled bowl, blue
- _____ 247. Stag and Holly 10 1/2", ball footed, ruffled bowl, green-Tough color to find and super!
- _____ 248. Good Luck 9" plate, purple, multi-electric
- _____ 249. Good Luck ruffled bowl, purple, with electric blue and purple iridescence
- _____ 250. Good Luck ruffled bowl, aqua opal, the ultimate in quality Good Luck bowls
- _____ 251. Good Luck ruffled bowl, marigold with pretty pastel hues
- _____ 252. Good Luck PCE bowl, marigold, blazing blues and pinks
- _____ 253. Good Luck PCE bowl, dynamite electric cobalt blue—WOW!!

SPECIAL NOTE:

NO SUNDAY CALLS, PLEASE!

Winning Absentee Bidders will be contacted Monday through Wednesday of the week following the Auction!

Thank You!

SEND ALL MAIL TO:

18350 Hunters Ridge Ct.

Boonville, MO 65233

WATCH: Web Site: www.AWK-SHN.com

- 254. Northwood Peacocks ruffled bowl, marigold, exquisite pastels
- 255. Northwood Peacocks ruffled bowl, purple, striking electric hues
- 256. Northwood Peacocks ruffled bowl, dark ice blue, nice pastels
- 257. Northwood Peacocks PCE bowl, lavender with exceptional eye appeal
- 258. Northwood Peacocks 9" plate, extraordinary pumpkin marigold front and back
- 259. Stipple Strawberry ruffled bowl, lime ice green-Tremendous rarity and achingly beautiful
- 260. Holly 9 1/2" plate, radium electric blue, one of the finest examples out there
- 261. Holly 9 3/8" plate, green, tough color and very pretty
- 262. Strawberry 8 3/4" ruffled bowl, gotta call this electric green, it's super!
- 263. Four Flowers Vt. 9 1/2" plate-You can argue this one is emerald green, loads of blue, has some purples, too!
- 264. Wild Rose footed 7" flared bowl, unique and wonderful green, inside and out *Imp*
- 265. Three Fruits 9" ruffled bowl, emerald green and outstanding!
- 266. Sunflower, spatula footed, ruffled bowl-Spectacular green w/ electric yellows and blues
- 267. Strawberry 9" ruffled bowl, plain back, marigold with champagne pastels
- 268. Diamond Point 9 1/4" vase, scarce ice green
- 269. Diamond Point 10 1/2" vase, rare Renninger blue!
- 270. Diamond Point 11 1/4" vase, sapphire blue, awesome color!
- 271. Daisy and Drape vase, purple, electric hues
- 272. Tree Trunk 10 1/2" vase, lime green, rare color!
- 273. Tree Trunk 12 1/2" mid-size vase, purple, magnificent electric hues
- 274. Knotted Beads 6 1/2" squatty vase, CRE top, blue, rare in this short size!
- 275. April Showers 8 1/2" vase, purple, vivid colors!
- 276. Show Stopper electric purple Freefold 10 1/4" vase-Bring your sunglasses!!
- 277. Ripple 12" vase, purple 3 3/8" base-Another outstanding electric vase
- 278. Ripple 9 1/4" vase, white, 2 1/2" base, scarce
- 279. Beaded Bullseye 9" vase-Dark, beautiful pumpkin marigold!
- 280. Imperial Poppy Show vase, incredible pastel marigold-Quite rare and valuable
- 281. Electric purple Imperial Grape carafe-Find one better!
- 282. Electric purple Imperial Grape decanter with stopper-Oh my!
- 283. Magnificent electric blue Rustic 21 3/4" vase with plunger base. Top shelf piece, just one tiny spot of manufacturer peeling on rim, but who cares? L@K at this monumental beauty!!
- 284. Dugan Estate 6" pinched vase, aqua, scarce!
- 285. Fruits and Flowers stemmed bonbon, pumpkin marigold at its finest!
- 286. Fruits and Flowers stemmed bonbon, awesome electric blue-Wowzer!
- 287. Three Fruits Medallion spat fid, ruffled bowl, deep electric purple
- 288. Bushel Basket, round, electric blue
- 289. Millersburg Fleur de Lis 10" ruffled bowl, outstanding radium green!
- 290. Millersburg Nesting Swan 9 1/2" ruffled bowl, purple w/ radium blue and purple hues
- 291. Millersburg Trout and Fly 3 in 1 edge bowl, amethyst, satin, great color especially on fish
- 292. Millersburg Rays and Ribbons 9" round, scalloped bowl, marigold w/ astonishing pinks and blues
- 293. Greek Key 9" ruffled bowl, green, BW exterior
- 294. Embroidered Mums ruffled bowl, purple, desirable
- 295. Three Fruits stippled, ruffled 8 3/4" bowl, rare blue and extra nice-Rib exterior
- 296. Three Fruits stippled 9" plate, purple, beautiful electric hues
- 297. Grape and Cable Vt. stippled 9" plate, purple, great eye appeal!
- 298. Grape and Cable Vt. stippled PCE bowl, pumpkin marigold
- 299. Grape and Cable Vt. stippled PCE bowl, electric blue all the way
- 300. Grape and Cable stippled PCE bowl, aqua opal-Make space for this one on the shelf!
- 301. Grape and Cable (Northwood) 10 3/4" fruit bowl, purple. Electric blue iridescence, minor rub inside in center

200
250
700

1475

35
75

- 302. Grape and Cable (Northwood) 10 3/4" fruit bowl, Olive, yes, olive green. Fantastic electric and certainly does not look olive green!
- 303. Grape and Cable (Northwood) 10 3/4" fruit bowl, electric blue. The hits just keep on coming!
- 304. Unusual smoky blue Grape and Cable, stippled, banded banana boat. Fabulous electric iridescence!
- 305. Grape and Cable 7 pc water set, purple, above average
- 306. Grape and Cable water pitcher, green, nice example
- 307. Grape and Cable tumblers, green—2 x \$
- 308. Northwood Grape and Cable powder jar with lid, purple
- 309. Grape and Cable hatpin holder, purple, always in demand
- 310. Grape and Cable cologne bottle w/ stopper, purple, extra nice
- 311. Grape and Cable cologne bottle w/ stopper, purple, extra nice
- 312. Grape and Cable 11" ruffled bowl, purple and pretty
- 313. Grape and Cable Vt PCE bowl, marigold
- 314. Raspberry milk pitcher, purple, outstanding electric hues
- 315. Imperial 474 milk pitcher, radium marigold
- 316. Wishbone footed, ruffled bowl, purple
- 317. Wishbone, footed ruffled bowl, marigold
- 318. Wishbone footed, ruffled bowl, green
- 319. Fenton Stippled Rays 10" tri-corner, CRE bowl, green, lovely
- 320. Nautilus toothpick holder, blue
- 321. Nautilus toothpick holder, blue
- 322. Imp Grape 6 1/2" plate, lime green
- 323. Imp Grape 6 1/2" plate, amber, covered in blues
- 324. Imp Grape 6 1/2" plate, beautiful marigold overlay, but the base glows faintly!
- 325. Northwood Fern Brand Chocolates 6 1/4" single handgrip plate, amethyst, nice!
- 326. Three Fruits stippled 9" plate, pumpkin marigold
- 327. Orange Tree 9 1/2" plate-Incredible pastel marigold!
- 328. Stag and Holly 8", round, flared, spatula footed bowl, radium marigold, neat shape
- 329. Stag and Holly 11" ICS, ball footed bowl, marigold
- 330. Stag and Holly giant rose bowl, marigold, finest kind!
- 331. Kittens 4 1/2" four sides up bowl, marigold
- 332. Millersburg Blackberry Wreath 5" deep, round bowl, radium marigold
- 333. Dugan Golden Harvest wine, amethyst
- 334. Dugan Amaryllis deep round compote, marigold, super strike, super color
- 335. Dugan Six Petals 7 1/4" tri-corner bowl, purple, electric all the way!
- 336. Lavender Ice Dugan Apple Blossom Twigs 8 1/4" ICS bowl-Tough piece and super!
- 337. Scroll Embossed 5 1/2" ruffled bowl w/ File exterior, purple, electric
- 338. Windmill 7" deep round bowl, green, covered in blues and purples and it glows!
- 339. Scroll Embossed 7 1/2" round bowl, emerald green
- 340. Imperial Shell 7 3/4" round, flared bowl, smoke-multi-color hues
- 341. Cobblestone 9" ruffled bowl, purple and multi-electric
- 342. Star of David 9" ruffled bowl, purple, super electric
- 343. Imperial Flute #3 round 4 3/4" berry dish, purple
- 344. Imperial Flute #3 open breakfast sugar, purple, pretty
- 345. Holly 9" ruffled bowl, marigold, blushing hot pinks!
- 346. Acorn Burrs tumbler, green
- 347. Tiger Lily 4 1/4" tumbler w/ starred base, electric purple
- 348. Memphis punch cup, purple
- 349. Singing Birds mug, fantastic electric blue
- 350. Grape Arbor tumbler, marigold


**Call Today To Sell
Your Fine Items**
660-882-5292 Day
660-882-5283 Evening

19TH ANNUAL CA NEW YEAR EXTRAV

Saturday, January 9, 20

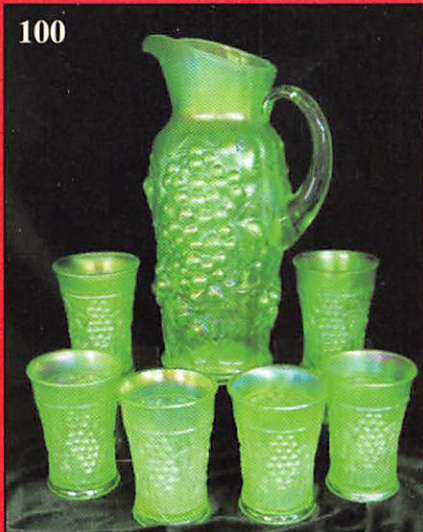
☞ Friday Preview: January 8 -12:00 Noon

in Case of BAD weather Saturday. >> Make

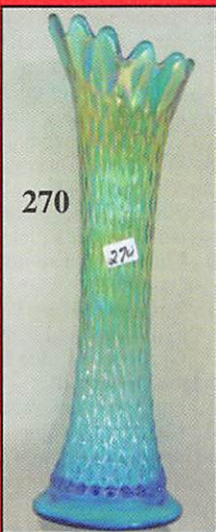
WEB SITE : WWW.AWK-SHN.COM

*Held at The Mickey Reichel Auction
1440 Ashley Road • Be*

A Collection Our Finest for



100



270



49-A



35



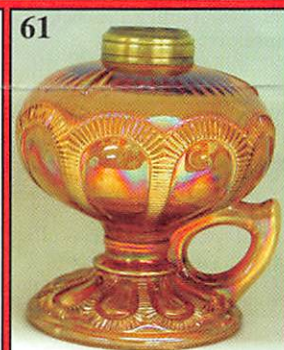
178



243



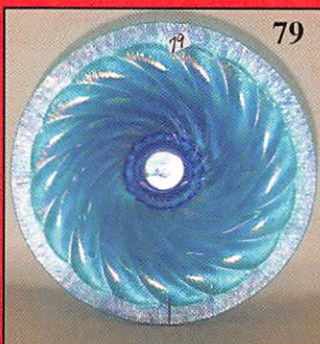
314



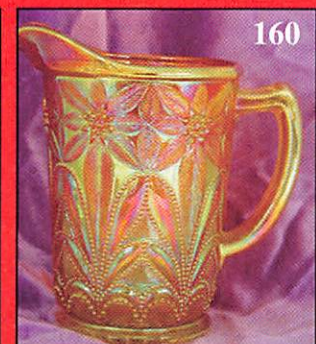
61



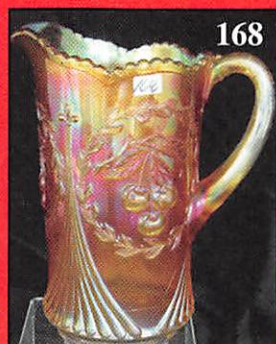
62



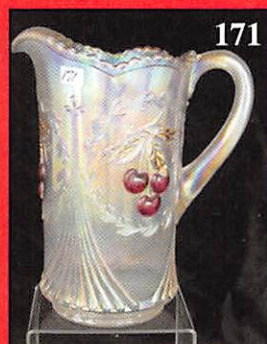
79



160



168



171



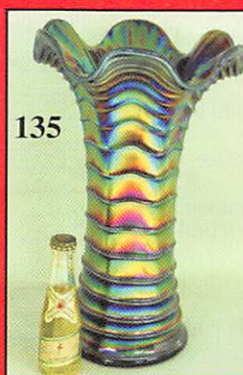
172



137



167



135



268,272



271



280

CARNIVAL GLASS MAGAZINE AUCTION

10 - 9:00 AM sharp

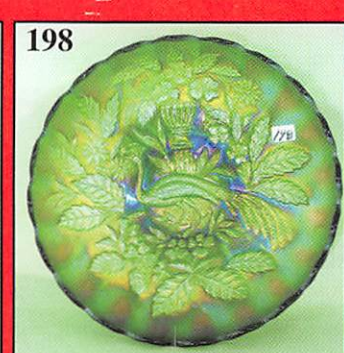
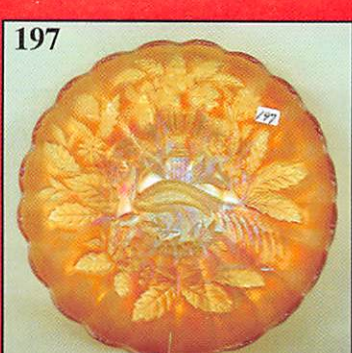
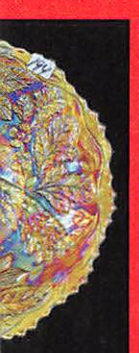
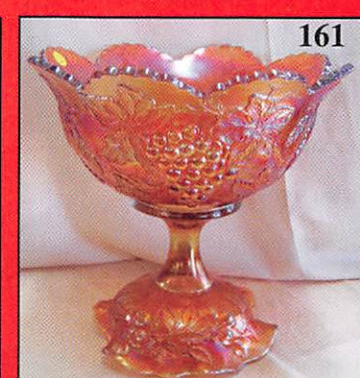
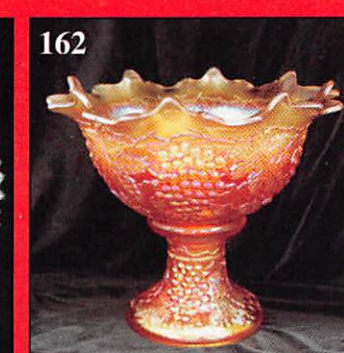
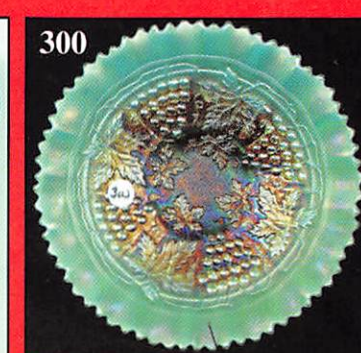
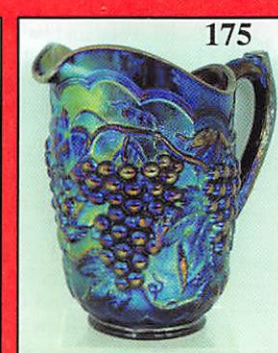
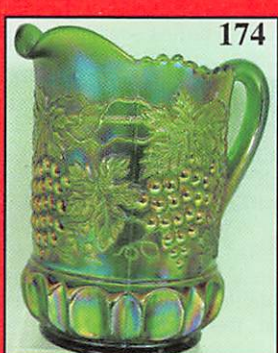
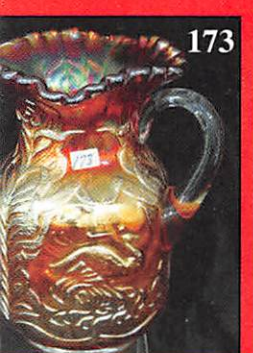
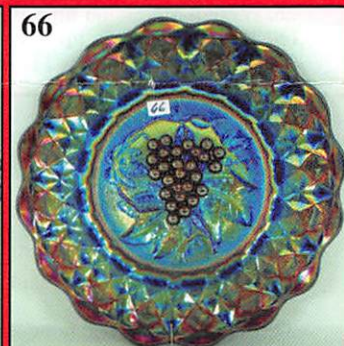
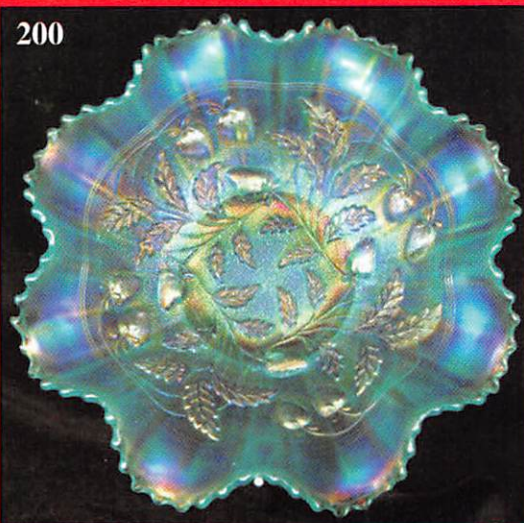
11 - 5:00 PM & 7:30 AM Auction Day

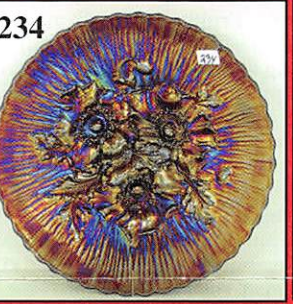
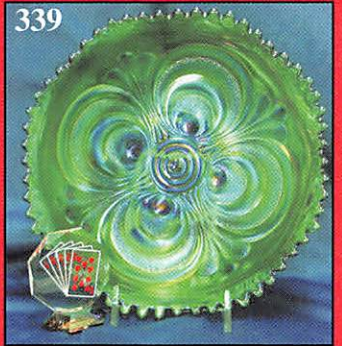
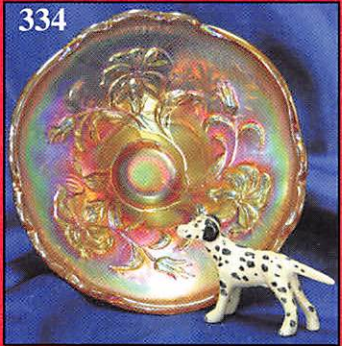
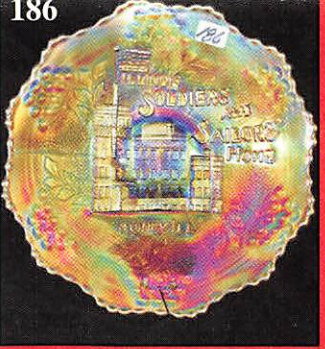
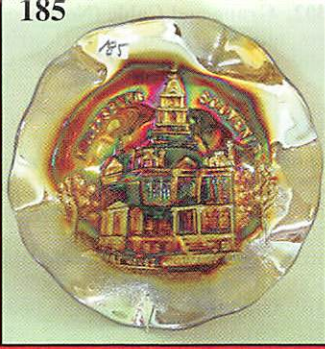
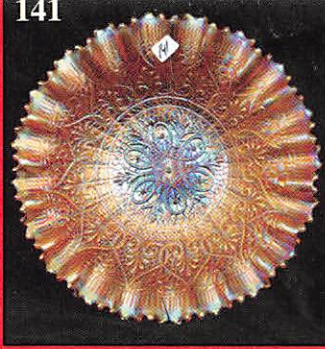
Setup day Sunday, January 10th, 9:00

ADMISSION FOR PHOTO GALLERY

*Gallery and Real Estate Center
Spartanburg, Missouri*

Color and Variety Ever





★★★ NO BUYERS

Make Reservations EARLY

Days Inn: 660-882-8624 • Comfort Inn: 660-882-5317

ABSENTEE

PLEASE NOTE: There is a \$6 handling charge for each successful bid which will be added to the purchase price and packing. Your write-in bid will be entered just as if you are present and bidding. Success (include your phone number). Direct mail bids to Auctioneer Mickey Reichel, 18350 Hunters Ridge Ct., Boonville, MO 64616. Please include your phone number and references. Announcements made day of the auction supercede all printed material.

Call for additional information: 660-882-5292

FAX: 660-882-5292 (evening hours)

E-mail: mreichel@AWK-SHN.com

Held Inside the Mickey

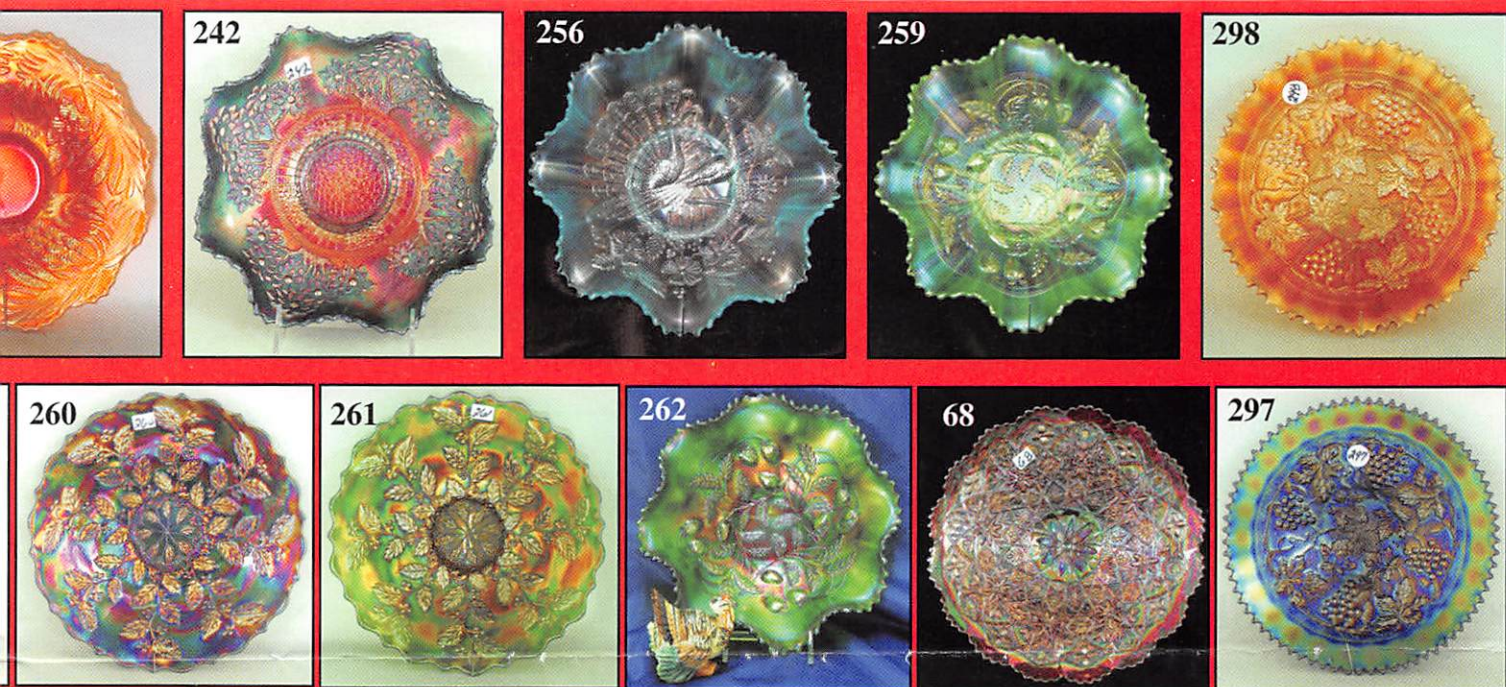
1 Mile North of I-70 on Hwy. 5, Exit 101, Boonville, MO



TERMS: Cash or Good Check,

4% Clerking Fee on all purchases except for p

*** No return on any items once they leave



PREMIUM ★★
at one of these local motels:

• Super 8: 660-882-2900 • Holiday Inn: 660-882-6882

BID POLICY:

and to the selling price for all write-in bids. This is in addition to the cost of postage, insurance and handling charges. Successful bidders will be notified in 1 to 3 days by the auctioneer (so be sure to include your address and phone number). Auctioneer: Reichel Auction Center, Columbia, MO 65233-2971. Terms: Cash or Check accepted with proper I.D. and Social Security Number. Auctioneer is Not Responsible for Accidents or Sold Items. **Call in Bids before Auction Welcome!** For more information call 660-882-5283 weekdays or 660-882-5283 evenings before 9:00 p.m.

Start FAX transmission after beep)
Web Site: www.awk-shn.com

Reichel Auction Center

Columbia, Missouri • 20 Miles West of Columbia, MO on I-70

VISA and MasterCard accepted. 

Payment of cash or check. Proper I.D. required.

at the Auction Center (No Exceptions) * * *



SEE REVERSE FOR DETAILS