

- \_\_\_\_\_ 1. Pastel M-Imp Lustre Rose 11" round, flared, footed bowl, plain interior—Beautiful
- \_\_\_\_\_ 2. **Smoke-Imp Lustre Rose 10 3/4" ruffled, footed bowl—Mkd IG**
- \_\_\_\_\_ 3. M-Imp Lustre Rose 10 3/4" ruffled, footed bowl—Mkd IG
- \_\_\_\_\_ 4. **Rich M-Imp Windmill 8 3/4" round, flared, footed bowl—Good color and good feet!**
- \_\_\_\_\_ 5. M-Imp Grape 7 pc. Round berry set—Well matched colors
- \_\_\_\_\_ 6. **M-Imp Open Rose 9" plate—Multi-color iridescence**
- \_\_\_\_\_ 7. Dark M-Imp Twins ruffled fruit bowl and base—Super iridescence
- \_\_\_\_\_ 8. **M-Imp Twins ruffled fruit bowl and base—Also nice**
- \_\_\_\_\_ 9. M-Imp Grape 9" low ruffled bowl
- \_\_\_\_\_ 10. **M-Imp Soda Gold cuspidor—Chip on rim**
- \_\_\_\_\_ 11. M-Imp Octagon goblets, sold 2 x \$
- \_\_\_\_\_ 12. **M-Imp Whirling Star punch bowl, base and six cups**
- \_\_\_\_\_ 13. M-Imp Grape wine glass
- \_\_\_\_\_ 14. **P-Imp Grape wine glass**
- \_\_\_\_\_ 15. M-Fenton 2 row Open Edge 5 1/2" ruffled hat
- \_\_\_\_\_ 16. **M-Fenton Blackberry Open Edge 5 3/4" ruffled hat**
- \_\_\_\_\_ 17. A-Fenton Stippled Rays bonbon
- \_\_\_\_\_ 18. **M-Fenton Peacock Tail 6 1/2" ICS bowl**
- \_\_\_\_\_ 19. M-Curved Star/Headdress 9" round bowl
- \_\_\_\_\_ 20. **M-Fenton Panther 5" round berry bowl**
- \_\_\_\_\_ 21. M-Fenton Panther 5 3/4" ruffled berry bowl
- \_\_\_\_\_ 22. **M-Fenton Stag and Holly 10 3/4", round, ball-ftd bowl**
- \_\_\_\_\_ 23. M-Fenton Two Flowers 9 1/2" ruffled, footed fruit bowl
- \_\_\_\_\_ 24. **Superb M-N Three Fruits 9" plate—Lots of yellows!**
- \_\_\_\_\_ 25. M-Fenton Holly 9" ruffled bowl
- \_\_\_\_\_ 26. **B-N stippled Three Fruits 9" plate, rib exterior—Lush purple and green iridescence**
- \_\_\_\_\_ 27. M-Fenton Water Lily 9" round, flared, footed bowl
- \_\_\_\_\_ 28. **G-Fenton Peacock and Grape 8" ruffled, spat ftd bowl**
- \_\_\_\_\_ 29. G-N Smooth Rays 8" ruffled bowl
- \_\_\_\_\_ 30. **M-N Star of David and Bows 8 1/4" ruffled, dome ftd bowl—Marigold is scarce in this pattern**
- \_\_\_\_\_ 31. M-N Three Fruits 9 1/4" plate
- \_\_\_\_\_ 32. **Great M-N Grape and Cable banana boat—Pinks, yellows and greens**
- \_\_\_\_\_ 33. M-N Smooth Rays 8 1/2" ruffled bowl
- \_\_\_\_\_ 34. **AO-N Hearts and Flowers ruffled compote—Fine pastel example!**
- \_\_\_\_\_ 35. M-N Hearts and Flowers ruffled compote
- \_\_\_\_\_ 36. **Dark M-Fenton Vintage (Grape) ruffled compote—Better than average**
- \_\_\_\_\_ 37. B-Fenton Persian Medallion bonbon
- \_\_\_\_\_ 38. **P-Dugan Question Marks stemmed bonbon**
- \_\_\_\_\_ 39. Radium M-Imp Optic Flute ruffled compote—Scarcer than you think
- \_\_\_\_\_ 40. **M-Square compote on brass pedestal, diamond and cane pattern, possibly of European origin**
- \_\_\_\_\_ 41. M-Dugan Golden Grape 7 3/4" ruffled bowl—Pink irid.
- \_\_\_\_\_ 42. **P-N Peacocks ruffled bowl—Has a tooth missing**
- \_\_\_\_\_ 43. M-Dugan Windflower 9" ruffled bowl
- \_\_\_\_\_ 44. **M-Fenton Dragon and Lotus 8" ICS bowl**
- \_\_\_\_\_ 45. M-Fenton Strawberry bonbon
- \_\_\_\_\_ 46. **G-Fenton Thistle 9" ruffled bowl**
- \_\_\_\_\_ 47. P-Dugan Circle Scroll ruffled hat whimsied from tumbler—Cool piece
- \_\_\_\_\_ 48. **Ice B-N Singing Birds mug—Desirable item**
- \_\_\_\_\_ 49. M-Dugan Vintage Banded mugs, sold 5 x \$
- \_\_\_\_\_ 50. **M-Dugan Floral and Grape tumblers, sold 3 x \$**
- \_\_\_\_\_ 51. Rich M-Fenton Water Lily tumblers, sold 2 x \$
- \_\_\_\_\_ 52. **Blue Opal-N Water Lily tumblers, non-iridized, sold 5 x \$**
- \_\_\_\_\_ 53. M-N Grape and Cable tumbler
- \_\_\_\_\_ 54. **M-Dugan Stork and Rushes w/ Lattice Band mug—Dark and pretty**
- \_\_\_\_\_ 55. M-Dugan Stork and Rushes w/ Lattice band mug
- \_\_\_\_\_ 56. **M-Fenton Orange Tree mug, 2 1/2" base**
- \_\_\_\_\_ 57. M-Fenton Orange Tree mug, 2 1/2" base
- \_\_\_\_\_ 58. **M-Jeannette? 5" tall cornucopia vases, sold 2 x \$**
- \_\_\_\_\_ 59. M- Smooth Panels shade in brass type desk lamp
- \_\_\_\_\_ 60. **M-Mlbg Strawberry 6 1/4" tri-corner bowl—Super, super radium, no harm bruise in base**
- \_\_\_\_\_ 61. M-Mlbg Whirling Leaves 10" ruffled bowl, satin
- \_\_\_\_\_ 62. **G-Mlbg Zig-Zag 9 3/4" tri-corner bowl—Great color in center, normal, minor peeling on rim**
- \_\_\_\_\_ 63. M-Mlbg Blackberry Wreath 9", 3 in 1 edge bowl—Fine radium
- \_\_\_\_\_ 64. **P-Mlbg Holly Whirl 10" ruffled bowl, satin**
- \_\_\_\_\_ 65. Radium P-Mlbg Grape Wreath Vt. 6 1/4", crimped edge bowl—Clover and Feather center design
- \_\_\_\_\_ 66. **M-Mlbg Holly Sprig 7" card tray bonbon**
- \_\_\_\_\_ 67. M-Feathered Arrow 9" ruffled bowl
- \_\_\_\_\_ 68. **M-Feathered Arrow 9" ruffled bowl—Both this and the previous bowl have radium finishes**
- \_\_\_\_\_ 69. M-Mlbg Nesting Swan 9 1/2" ruffled bowl—Blues and pinks
- \_\_\_\_\_ 70. **P-Mlbg Nesting Swan 9 3/4" ruffled bowl—Great radium finish**
- \_\_\_\_\_ 71. P-Mlbg Peacock 5 1/2" round, flared berry bowl—Delightful color on the bird!
- \_\_\_\_\_ 72. **G-Mlbg Blackberry Wreath 10" ICS bowl—Less common shape for this pattern and pretty!**
- \_\_\_\_\_ 73. P-Mlbg Blackberry Wreath 10" ICS bowl—Oh so nice radium finish
- \_\_\_\_\_ 74. **M-Mlbg Rays and Ribbons 9 1/2" round bowl—Lots of pinks**
- \_\_\_\_\_ 75. Dark M-Imp 5 3/4" Mini Morning Glory vase
- \_\_\_\_\_ 76. **Rich M-Imp 6" Mini Morning Glory vase**
- \_\_\_\_\_ 77. M-Dugan Lattice Points 8" vase, Daisy in base
- \_\_\_\_\_ 78. **M-Imp Freefold 11 1/4" vase**
- \_\_\_\_\_ 79. M-Fenton Fine Rib Footed 5 1/2" vase
- \_\_\_\_\_ 80. **P-Dugan Wide Rib 12 1/4" vase—Not frequently seen**
- \_\_\_\_\_ 81. PO-Dugan Wide Rib 11 1/4" vase
- \_\_\_\_\_ 82. **B-Dugan Spiralex 10 1/2" vase—Radium finish**
- \_\_\_\_\_ 83. M-Dugan Mary Ann 2-handled vase
- \_\_\_\_\_ 84. **M-Dugan Lined Lattice 5 1/4" squatty vase—Short, but sweet, with a great flared top**
- \_\_\_\_\_ 85. Marigold over Milkglass-Imp Smooth Panels 9" vase
- \_\_\_\_\_ 86. **Smoke-Imp Swirl 7 1/4" vase**
- \_\_\_\_\_ 87. Aqua-Imp Ripple 11" swung vase
- \_\_\_\_\_ 88. **M-Imp Curled Rib JIP 9 1/4" vase—Superb iridescence, chip on tip**
- \_\_\_\_\_ 89. M-Imp Rococo 4 1/4" vase
- \_\_\_\_\_ 90. **G-Imp Ripple 11 1/4" vase, 3 1/4" base**
- \_\_\_\_\_ 91. M-Fenton Diamond Point Columns 6 3/4" squatty vase
- \_\_\_\_\_ 92. **M-April Showers 12" vase—Peacock Tail interior**
- \_\_\_\_\_ 93. B-Rustic 14 1/2" vase with CRE top
- \_\_\_\_\_ 94. **M-Fenton Plume Panels 10 3/4" vase—Vibrant color**
- \_\_\_\_\_ 95. Custard w/ Nutmeg-N Drapery 9" vase, non-iridized
- \_\_\_\_\_ 96. **M-Riihimaki Western Thistle 5" vase**
- \_\_\_\_\_ 97. Lav-Westmoreland Corinth 9 3/4" vase
- \_\_\_\_\_ 98. **G-Westmoreland Corinth 8" vase—Loaded with color!**
- \_\_\_\_\_ 99. G-N Thin Rib 9" vase
- \_\_\_\_\_ 100. **Cobalt B-N Tree Trunk 7 3/4" vase—Multi electric**



- \_\_\_\_\_ 101. Olive G-N Four Pillars 11 1/2" vase
- \_\_\_\_\_ **102. M-N Flute 12 1/2" vases, sold 2 x \$**
- \_\_\_\_\_ 103. M-Imp Grape 9 1/4" plate-Top of the line color
- \_\_\_\_\_ **104. M-Imp Optic and Buttons cup and saucer-NICE**
- \_\_\_\_\_ 105. M-Imp Star Medallion 8" round, flared bowl
- \_\_\_\_\_ **106. M-Imp Waffle Block cup and saucer-Seldom seen**
- \_\_\_\_\_ 107. M-Iris and Herringbone cup and saucer
- \_\_\_\_\_ **108. M-Imp Open Rose 9 1/4" plate-Very attractive**
- \_\_\_\_\_ 109. Dark M-Imp Grape 9 1/4" low ruffled plate
- \_\_\_\_\_ **110. Radium M-Imp Acanthus 9" ruffled bowl**
- \_\_\_\_\_ 111. M-Imp Scroll Embossed 8" ruffled compote
- \_\_\_\_\_ **112. M-Imp Octagon 8" pitcher**
- \_\_\_\_\_ 113. M-Imp Octagon tumblers, 4 3/8" tall, sold 2 x \$
- \_\_\_\_\_ **114. M-Imp Star Medallion milk pitcher**
- \_\_\_\_\_ 115. P-Imp Diamond Lace water pitcher-Stunning, but is cracked
- \_\_\_\_\_ **116. M-Imp Hobstar NuCut 9 3/4" vase—Mkd IG**
- \_\_\_\_\_ 117. M-Imp Grape decanter w/ stopper—Mkd IG
- \_\_\_\_\_ **118. Ice G-Imp Grape 9 1/2" vase, glows!—Mkd LIG**
- \_\_\_\_\_ 119. Smoke-Imp Grape decanter, no stopper—Mkd IG
- \_\_\_\_\_ **120. Helios G-Imp Grape decanter, no stopper**
- \_\_\_\_\_ 121. M-Imp Grape decanter, no stopper
- \_\_\_\_\_ **122. M-Imp Octagon decanter w/ stopper, chip on stopper**
- \_\_\_\_\_ 123. P-N Grape and Cable cologne bottle, no stopper
- \_\_\_\_\_ **124. Clambroth-Imp Octagon 9" round, flared bowl-Super pastels**
- \_\_\_\_\_ 125. M-Imp Octagon 8 1/2" round, flared bowl
- \_\_\_\_\_ **126. M-Imp Hattie 8 1/2" round, flared bowl**
- \_\_\_\_\_ 127. M-Imp Frosted Block 8 1/2" oval celery bowl-Dark!
- \_\_\_\_\_ **128. Radium M-Imp Three In One 9" ICS bowl**
- \_\_\_\_\_ 129. M-Imp Diamond Ring rosebowl
- \_\_\_\_\_ **130. Amber-Imp Open Rose rosebowl-Purples and blues**
- \_\_\_\_\_ 131. P-Imp Heavy Grape 8" plate
- \_\_\_\_\_ **132. M-Imp Star Spray 6 1/2" round, flared bowl**
- \_\_\_\_\_ 133. Electric P-Imp Scroll Embossed 6" ruffled bowl-File exterior
- \_\_\_\_\_ **134. M-Smooth Rays 8 1/4" bowl, with turned up scallops**
- \_\_\_\_\_ 135. M-Fenton Stippled Rays card tray bonbon
- \_\_\_\_\_ **136. Sapphire-Fenton Holly 6 1/4" square hat**
- \_\_\_\_\_ 137. M-Fenton Holly goblet shape compote
- \_\_\_\_\_ **138. M-Fenton Blackberry Spray 6" JIP hat**
- \_\_\_\_\_ 139. M-Dugan Question Mark stemmed bonbon
- \_\_\_\_\_ **140. M-N Beaded Cable 7 1/4" ruffled, footed bowl-Smooth Ray interior**
- \_\_\_\_\_ 141. P-N Fine Cut and Roses 7" ruffled, footed candy dish-Plain interior
- \_\_\_\_\_ **142. G-N Greek Key 8 1/2" dome base bowl, plain interior, high radium finish**
- \_\_\_\_\_ 143. M-Fenton Sailboats 5 3/4" ruffled bowl
- \_\_\_\_\_ **144. P-Sowerby Pineapple 7 1/2", ICS bowl**
- \_\_\_\_\_ 145. M-Imp Double Scroll candlesticks, w/ Swirled bases-Sold as pair
- \_\_\_\_\_ **146. M-Imp delta base 9" candlestick**
- \_\_\_\_\_ 147. M-Imp Chesterfield 7" candlesticks-Sold as pair
- \_\_\_\_\_ **148. M-Imp Crackle 7" candlesticks-Sold as pair**
- \_\_\_\_\_ 149. M-Imp Hex 7" candlesticks-Sold as pair
- \_\_\_\_\_ **150. M-Imp delta base 9" candlesticks-Sold as pair**
- \_\_\_\_\_ 151. M-Jeannette #5201 6 1/2" round base candlesticks-Sold as pair
- \_\_\_\_\_ **152. Light M-Imp Hex 7" candlesticks-Sold as pair**
- \_\_\_\_\_ 153. M-Jeannette #5201 6 1/2" candlesticks-Sold as pair
- \_\_\_\_\_ **154. M-Jeannette #5201 6 1/2" candlesicks-Sold as pair**
- \_\_\_\_\_ 155. M-Jeannette #5201 6 1/2" candlestick
- \_\_\_\_\_ **156. Olive G-N #657 8 1/2" candlesticks, super!-Sold as pair**
- \_\_\_\_\_ 157. Sapphire-N #657 8 1/2" candlesticks, very nice!-Sold as pair
- \_\_\_\_\_ **158. Rare Ivory-N #657 8 1/2" candlesticks-Sold as pair**
- \_\_\_\_\_ 159. Scarce Jade Blue-N #657 8 1/2" candlesticks-Sold as pair
- \_\_\_\_\_ **160. Vaseline-N #657 8 1/2" candlesticks-Sold as pair**
- \_\_\_\_\_ 161. W Stretch-U. S. Glass #151 7 3/4" candlesticks-Sold as pair
- \_\_\_\_\_ **162. Harding Blue stretch-Dugan/Diamond Column 8" candlesticks-Sold as pair**
- \_\_\_\_\_ 163. Ice G Vaseline stretch-Dugan/Diamond Column 8" candlesticks-Sold as pair
- \_\_\_\_\_ **164. Rare M-N Colonial #696 10 1/2" candlesticks-Sold as pair**
- \_\_\_\_\_ 165. Vas stretch-U. S. Glass # 315 9 3/4" Spiral Twist candlesticks-Sold as pair
- \_\_\_\_\_ **166. M-Imp Grape 7 pc water set**
- \_\_\_\_\_ 167. M-Fenton Butterfly and Berry 9" vase
- \_\_\_\_\_ **168. M-Imp Freefold 9 1/2" vase-Killer color!**
- \_\_\_\_\_ 169. M-Imp Curled Rib 8" vase w/ 5" opening-Dark and nice
- \_\_\_\_\_ **170. Sapphire stretch-N one pound, 9" tall covered candy dish**
- \_\_\_\_\_ 171. Lav-Imp Ripple 11 1/2" vase, 3 3/8" base
- \_\_\_\_\_ **172. G-Imp Freefold 11" vase**
- \_\_\_\_\_ 173. M-Imp Freefold 12" vase, 2 3/4" base
- \_\_\_\_\_ **174. Awesome Smoke-Imp Smooth Panels 11" funeral vase, with 4 1/2" base and super 7 3/4" opening**
- \_\_\_\_\_ 175. W-Imp Smooth Panels 13 3/4" vase, marigold overlay, fine pastels, Iron Cross Mark-A Winner!
- \_\_\_\_\_ **176. Pumpkin M-N banded Grape and Cable hatpin holder-Hot pinks**
- \_\_\_\_\_ 177. Red-Fenton Plaid 8 1/4", ICS bowl-Rare, silver/platinum/gold finish
- \_\_\_\_\_ **178. P-N Tree Trunk 17" plunger base funeral vase, 7 1/2" opening-Big vases are hot!**
- \_\_\_\_\_ 179. M-Ripple 14 1/2" Ripple funeral vase, 4 3/4" base, huge 8" opening-Great color on this vase
- \_\_\_\_\_ **180. VERY RARE PO-Fenton Rustic 9" vase-A great find!**
- \_\_\_\_\_ 181. Sapphire Opal-Fenton Blackberry Spray 6 1/2", JIP, CRE hat-Another splendid find!
- \_\_\_\_\_ **182. M-Dugan Windflower 8 1/2" ten ruffle bowl**
- \_\_\_\_\_ 183. M-Dugan Double Stem Rose 8 1/2" ten ruffle bowl
- \_\_\_\_\_ **184. P-Dugan Double Stem Rose 9 1/4" ten ruffle bowl-This one's got some color**
- \_\_\_\_\_ 185. M-Dugan Double Stem Rose 8" round bowl
- \_\_\_\_\_ **186. W-Dugan Double Stem Rose 9 1/2" plate-Super pastels**
- \_\_\_\_\_ 187. P-Dugan Question Mark stemmed bonbon
- \_\_\_\_\_ **188. W-Dugan Leaf Rays spade shape nappy**
- \_\_\_\_\_ 189. PO-Dugan Holly and Berry 6", seven ruffle nappy
- \_\_\_\_\_ **190. P-Dugan Beaded Shell mug-Very colorful iridescence**
- \_\_\_\_\_ 191. M-Fenton Holly ruffled compote
- \_\_\_\_\_ **192. M-Fenton Holly goblet shape compote**
- \_\_\_\_\_ 193. M-Fenton Orange tree ruffled compote whimsied from wine glass
- \_\_\_\_\_ **194. B-Fenton Blackberry Open Edge ruffled basket**
- \_\_\_\_\_ **194A. M-Fenton Blackberry Open Edge ruffled basket**
- \_\_\_\_\_ **194B M-Fenton 2-row Open Edge ruffled basket**
- \_\_\_\_\_ 195. M Fenton Vintage (Grape) 7 1/2" ruffled bowl

\_\_\_\_\_ 196. A-Fenton Vintage (Grape) 7 1/2" ruffled bowl

\_\_\_\_\_ 197. G-Fenton Coin Dot 9 1/2" ruffled bowl-Soft blues

\_\_\_\_\_ 198. Powder B-Fenton Grape and Cable 6 1/2" nut bowl-  
HEAVY marigold overlay

\_\_\_\_\_ 199. A-Fenton Vintage (Grape) 9" ruffled bowl

\_\_\_\_\_ 200. P-N Grape and Cable master punch set-bowl, base,  
12 nice cups-Multi electric exterior on bowl and base

\_\_\_\_\_ 201. M-N Grape and Cable mid-size ruffled punch bowl,  
base and four matching cups-Pastel type iridescence

\_\_\_\_\_ 202. P-N Grape and Cable mid-size ruffled punch bowl,  
base and eight beautiful cups-Outstanding color and  
electric blue interior on the bowl

\_\_\_\_\_ 203. P-N Grape and Cable Vt. round punch bowl, base and  
six cups-Desirable and pretty set

\_\_\_\_\_ 204. W-N Grape and Cable cup and turned up saucer-  
Scarce item

\_\_\_\_\_ 205. Dark M-Rib Interior punch cup

\_\_\_\_\_ 206. G-Imp Flute punch cup-Quite scarce

\_\_\_\_\_ 207. Elec P-Imp Grape punch cup

\_\_\_\_\_ 208. BA-N Peacock at Fountain punch cup

\_\_\_\_\_ 209. A-N Peacock at Fountain punch cup

\_\_\_\_\_ 210. Lav-N Peacock at Fountain punch cup

\_\_\_\_\_ 211. B-N Peacock at Fountain punch cup

\_\_\_\_\_ 212. Smoke Slag-N Peacock at Fountain punch cup

\_\_\_\_\_ 213. Pumpkin M-N Grape and Gothic Arches tumbler

\_\_\_\_\_ 214. P-N Singing Birds tumbler-Outstanding electric  
piece

\_\_\_\_\_ 215. Lav-N Grape and Cable tumbler-Beautiful color

\_\_\_\_\_ 216. M-Enameled Silver Queen tumbler

\_\_\_\_\_ 217. G-Fenton Paneled Dandelion tumbler

\_\_\_\_\_ 218. B-Fenton Ten Mums Tumbler-Glowing greens on  
the exterior!

\_\_\_\_\_ 219. B-N Enameled Cherries tumbler

\_\_\_\_\_ 220. Smoke-Imp Soda Gold tumbler-Loaded with  
purples and blues

\_\_\_\_\_ 221. P-Imp Lustre Rose tumbler, Rib interior-Multi-color

\_\_\_\_\_ 222. B-Fenton Blackberry Block tumbler

\_\_\_\_\_ 223. P-Cambridge Double Star tumbler-Difficult item to  
find

\_\_\_\_\_ 224. B-God and Home tumbler

## **SPECIAL NOTE:**

### **NO SUNDAY CALLS, PLEASE!**

Winning Absentee Bidders will be contacted Monday through Wednesday of the week following the Auction!

Thank You!

## **SEND ALL MAIL TO:**

**18350 Hunters Ridge Ct.**

**Boonville, MO 65233**

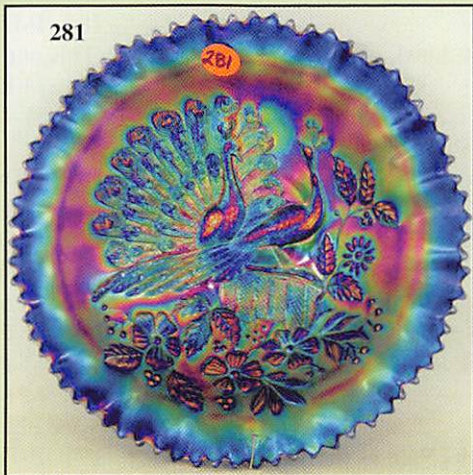
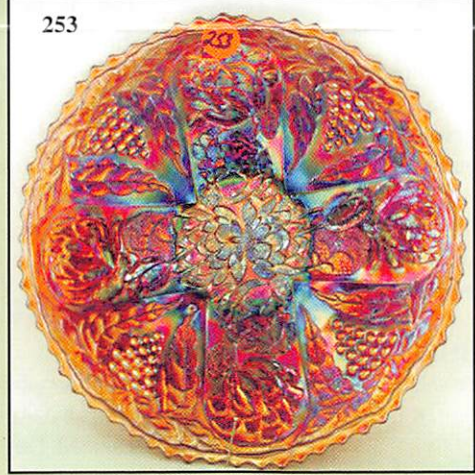
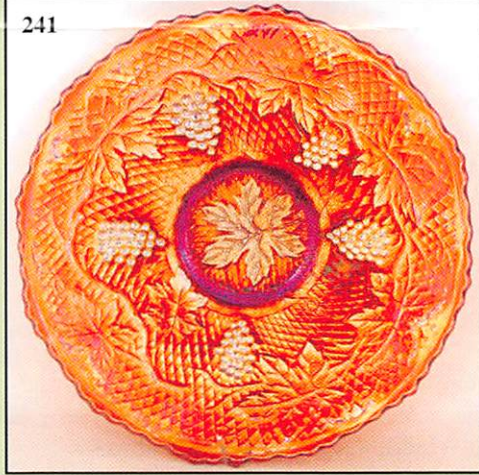
**WATCH:  Web Site: [www.AWK-SHN.com](http://www.AWK-SHN.com)**



225. M-Fenton Persian Medallion card tray bonbon
226. **B-Fenton Persian Medallion 4-sides up bonbon**
227. M-Fenton Wreath of Roses/Persian Medallion punch cups, well-matched, sold 5 x \$
228. **A-Fenton Persian Medallion 5 1/2" round, flared berry bowl**
229. B-Fenton Peacock Tail 7" ruffled bowl
230. **M-Fenton Peacock Tail 8 1/2", 3 in 1 edge bowl-A well shaped bowl**
231. B-Fenton Dragon and Lotus 9" ruffled bowl
232. **M-Fenton Orange Tree 9" ruffled bowl**
233. G-Fenton Peacock and Grape 9" ruffled bowl-Minor nick on base rim
234. **Clambroth-Fenton 9 3/4" Orange Tree plate**
235. Lav-N Grape and Cable 5" berry dish, w/ Thumbprint, sold 3 x \$
236. **P-N Grape and Cable 5" berry dish, w/ Thumbprint, sold 3 x \$**
237. M-Fenton Pine Cone 5 1/4" round berry bowl
238. **G-Fenton Little Flowers 5 1/2" round berry bowl-Very colorful**
239. B-Fenton Cherry Chain 6" ruffled bowl
240. **Powder B-Fenton Strawberry bonbon**
241. A-Fenton Concord 9 1/4" plate-One of the better ones
242. **M-Fenton Concord 9 1/4" plate-Equally desirable**
243. M-Fenton Peacock at Urn 9 1/4" plate
244. **Rich M-Fenton Peacock at Urn 9" ruffled bowl-Great example**
245. M-Fenton Heart and Vine 9" ruffled bowl-Outstanding iridescence
246. **W-Fenton Leaf Chain 9" ruffled bowl-Blues and purples**
247. A-Fenton Iris ruffled compote
248. **M-Fenton Two Flowers spat ftd rosebowl-Scarce**
249. M-Fenton Two Flowers 7" spat ftd round nut bowl
250. **M-Fenton Stag and Holly 10" ruffled, ball ftd bowl**
251. M-Fenton Holly 9" ruffled bowl
252. **M-Fenton Lotus and Grape 6" round, ball ftd bowl**
253. A-Fenton Lotus and Grape 9 1/4" plate-Enchanting color
254. **B-Fenton Lotus and Grape 9 1/4" plate-Why not buy them both?**
255. B-Fenton Leaf Chain 7 1/2" plate
256. **M-Fenton Leaf Chain 7 3/4" plate**
257. G-Fenton Vintage (Grape) 7 1/2" plate
258. **G-Imp Grape 6 1/2" plate-It glows under blacklight**
259. M-Dugan Persian Garden 6 3/4" plate
260. **M-Dugan Persian Garden 6 1/2" plate**
- 260A. **Electric Purple-Imp Scroll Embossed 9 1/4" plate, smooth exterior and marie-Show stopper!**
261. M-Illinois Soldiers and Sailors Home 8" plate-Outstanding lettered carnival item
262. **A-Fenton Thistle 9" ruffled bowl w/ Horlacher advertising on base-Scarce!!**
263. P-Mlbg Souvenir Courthouse 7 1/2" ruffled bowl-Going to court never looked so good!
264. **Lav-N Dreibus Parfait Sweets 6 1/4", 2-sides up advertising plate-Always in demand!**
265. A-N Dreibus Parfait Sweets 6 1/4" single handgrip plate
266. **A-N Davidson's Society Chocolates single handgrip plate-Concludes a great run of advertising items**
267. P-N Grape and Cable w/ Thumbprint 9" round master berry bowl-Good looking
268. **M-N Strawberry 9" plate, BW exterior**
269. M-N Three Fruits PCE bowl, BW exterior
270. **G-N Grape Leaves 9" ruffled bowl**
271. P-N Grape Leaves 9" ruffled bowl
272. **M-N Stippled Rays 9" PCE bowl, radium finish**
273. Exquisite Lav-N Stippled Rays 9 3/4" PCE bowl
274. **M-N Acorn Burrs 4 1/2" round berry bowl**
275. M-N Good Luck 9" ruffled bowl-Pastels abound on this bowl
276. **AO-N Good Luck 9" ruffled bowl-Loaded with opal and scarce**
277. Horehound-N Good Luck 9" ruffled bowl, BW exterior-Great greens and yellows
278. **Ice B-N Good Luck 9" ruffled bowl-Outstanding pastels, two minor flakes between points**
279. Scarce B-N stippled Three Fruits 9" ruffled bowl, Rib exterior
280. **Ice G-N Nippon PCE bowl, Rib exterior-Great coloration**
281. B-N Peacocks PCE bowl, Rib exterior-This one is ALL electric!
282. **Ice B Opal-N Rose Show ruffled bowl-Nice pastel example**
283. Pumpkin M-N Rose Show 9 1/2" plate-Makes a statement!!
284. **W-N Peacocks 9 1/2" plate-Plentiful purples**
285. Electric P-Imp Grape 9" deep, round bowl
286. **P-N Raspberry water pitcher and five tumblers**
287. M-Dugan Lattice and Daisy tankard pitcher and one tumbler
288. **Dark M-Imp Lustre Rose 9" ruffled bowl-Old and beautiful**
289. Rich M-N Fruits and Flowers stemmed bonbon
290. **AO-N Hearts and Flowers ruffled compote-Scintillating pastels**
291. M-N Peacock at Fountain compote-Collector favorite, lots of pinks
292. **M-N Hearts and Flowers ruffled compote-Well above average**
293. Pumpkin M-N round Bushel basket
294. **M-N Greek Key 8 1/2" ruffled bowl-Splashes of pinks and blues**
295. M-Fenton Butterfly and Berry butter dish w/ lid
296. **M-Fenton Butterfly and Berry creamer**
297. M-Fenton Butterfly and Berry spooner
298. **M-Fenton Butterfly and berry sugar-no lid**
299. Amber-Imp Pansy ruffled pickle dish
300. **AO-N Embroidered Mums 9" ruffled bowl-A prize piece for any carnival collector!**
301. G-Cambridge Inverted Feather cracker jar base only-Superb color, got the lid?
302. **M-Imp Octagon 8 3/4" flared bowl**
303. through 359. Miscellaneous carnival glass pieces and more than twenty box lots of carnival glass finish out this sale.

 **Call Today To Sell  
Your Fine Items  
660-882-5292 Day  
660-882-5283 Evening**





**CARNIVAL G**  
**Saturday October 24th**  
 Friday Preview: October 23<sup>rd</sup> -12:00  
 WEB SITE: WWW.AWK-SH

*Held at The Mickey Reichel Auction*  
*1440 Ashley Road*  
*Collectibles*  
*The Taylors of Oklahoma, Popes*  
*Keep checking the Web Site for Daily info*



# GLASS AUCTION

, 2009- 9:00 AM Sharp

Noon till 5:00 PM & 7:30 AM Auction Day

FOR PHOTO GALLERY

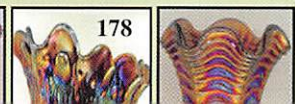
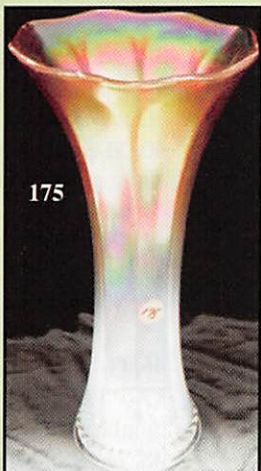
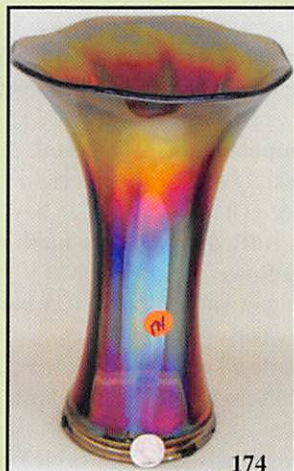
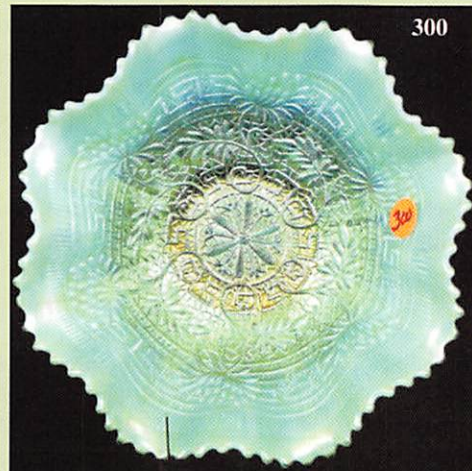
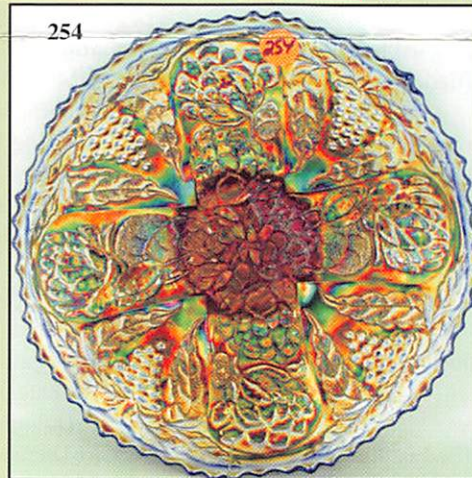
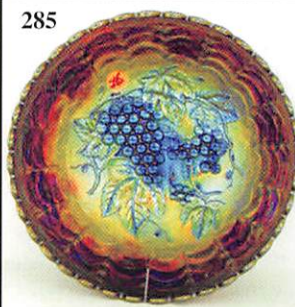
tion Gallery and Real Estate Center

• Boonville, Missouri

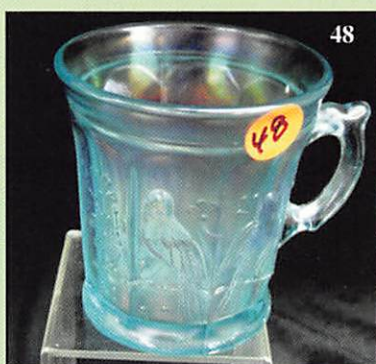
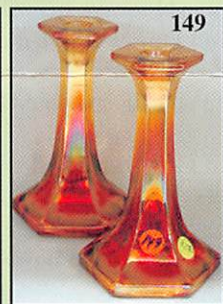
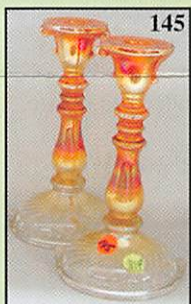
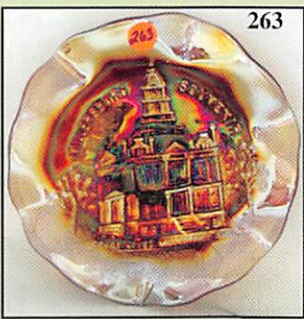
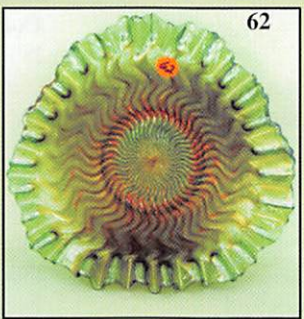
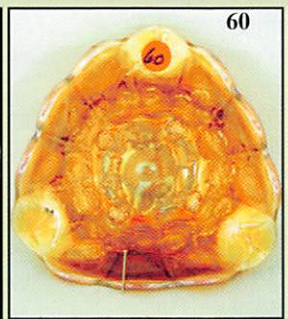
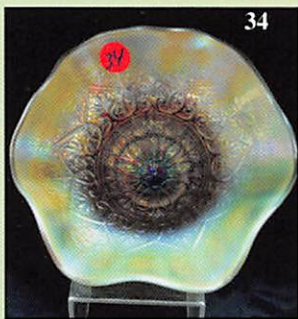
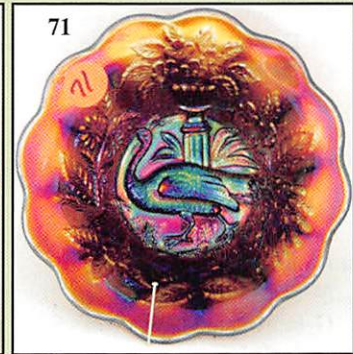
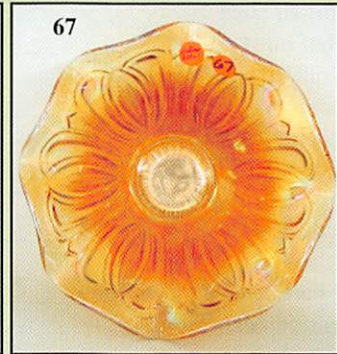
ons from:

of Alabama, and Wiebes of Kansas

ormation. ~ Now booking for 2010 Auctions!







**NO BUYERS**

**Make Reservations EARLY**

Days Inn: 660-882-8624 • Comfort Inn: 660-882-5317 •

ABSENTEE BI

**PLEASE NOTE:** There is a \$6 handling charge for each successful bid which will be added to packing. Your write-in bid will be entered just as if you are present and bidding. **Successful bid number).** Direct mail bids to Auctioneer Mickey Reichel, 18350 Hunters Ridge Ct., Boonville, M References. Announcements made day of the auction supercede all printed material. Not Responsible

Call for additional information: 660-882-5292 c

FAX: 660-882-5292 (evening hours s

E-mail: [mreichel@AWK-SHN.com](mailto:mreichel@AWK-SHN.com)

**Held Inside the Mickey**

1 Mile North of I-70 on Hwy. 5, Exit 101, Boonville,

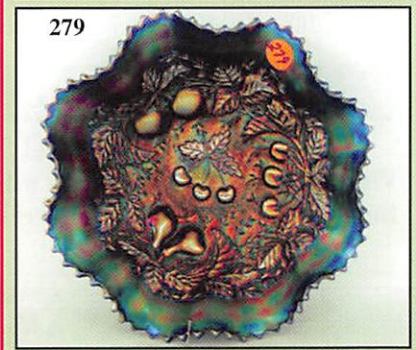
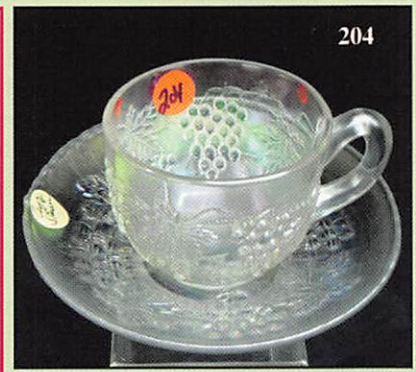
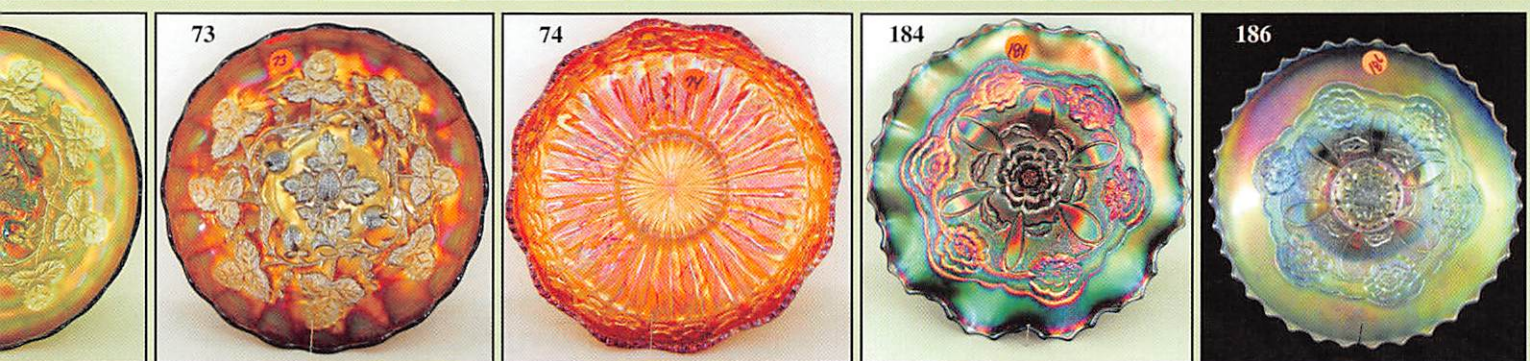


**TERMS:** Cash or Good Check, V

4% Clerking Fee on all purchases except for pa

**\*\*\* No return on any items once they leave**






**PREMIUM** ★★ ★  
**at one of these local motels:**

Super 8: 660-882-2900 • Holiday Inn: 660-882-6882

**BID POLICY:**  
 the selling price for all write-in bids. This is in addition to the cost of postage, insurance and  
 bidders will be notified in 1 to 3 days by the auctioneer (so be sure to include your phone  
 number 65233-2971. Terms: Cash or Check accepted with proper I.D. and Social Security Number and  
 proof for Accidents or Sold Items. Call in Bids before Auction Welcome!  
 Call in Bids or 660-882-5283 evenings before 9:00 p.m.

(Start FAX transmission after beep)

Web Site: [www.awk-shn.com](http://www.awk-shn.com)

**Reichel Auction Center**  
 Missouri • 20 Miles West of Columbia, MO on I-70  
 VISA and MasterCard accepted.   
 Payment of cash or check. Proper I.D. required.  
**at the Auction Center (No Exceptions) \* \* \***

**SEE REVERSE FOR DETAILS**