

- _____ 1. A-Dugan Wreathed Cherry banana bowl--Very pretty
- _____ 2. **M-Imp Long Hobstar 10" round bowl**
- _____ 3. B-Dugan Peacock at Fountain 7 pc water set--
Exceptionally nice
- _____ 4. **P-N Raspberry gravy boat--Desirable little item**
- _____ 5. M-Fenton Flute 9 1/2" vase--Pretty pastels
- _____ 6. **M-Fenton Panther 5" round berry bowl**
- _____ 7. M-Fenton Panther 5 3/4" ruffled berry bowl
- _____ 8. **P-N Stippled Three Fruits 9" plate--Good color, light
rub on fruit**
- _____ 9. G-Fenton Feathered Serpent 10" ruffled bowl
- _____ 10. **M-Oval Star and Fan footed rosebowl--Interesting**
- _____ 11. P-N Grape and Cable powder jar and lid
- _____ 12. **P-N Fruits and Flowers 7 1/2" ruffled bowl--Plain
exterior**
- _____ 13. G-Fenton Peacock and Grape 8", spat ftd, ruffled bowl
- _____ 14. **Custard w/ nutmeg-N Fine Cut and Roses rosebowl--
Fancy interior**
- _____ 15. G-Fenton Blackberry Spray ruffled compote
- _____ 16. **M-Thorn and Thistle nut bowl**
- _____ 17. M-Fenton Strawberry bonbon
- _____ 18. **M-Fenton Water Lily 5 3/4" ftd berry bowl**
- _____ 19. B-Fenton Panelled Diamond and Bows 6 1/2" vase
- _____ 20. **Dark M-Fenton Peacock at Urn 9", six ruffle bowl**
- _____ 21. B-Dugan Peacock at Fountain tumblers--5 x \$
- _____ 22. **P-N Fruits and Flowers 6" ruffled berry bowl**
- _____ 23. M-Dugan Leaf Rays nappy
- _____ 24. **A-Fenton Butterfly bonbon--Pinks and blues**
- _____ 25. B-Fenton Holly 7" 2 sides up hat--A beauty
- _____ 26. **G-Fenton Vintage Grape 9" ruffled bowl**
- _____ 27. M-Fenton Fern Panels 6" ruffled hat
- _____ 28. **PO-Dugan Starfish stemmed bonbon--Scarce and
loaded with opal**
- _____ 29. B-Fenton Blackberry Open Edge 2 -row 6" ruffled hat
- _____ 30. **Electric B-N Peacock at Fountain tumbler**
- _____ 31. Multi-Electric B-N Peacock at Fountain tumbler
- _____ 32. **Soft B-N Peacock at Fountain tumbler**
- _____ 33. W-N Bushel Basket, eight sided--chip by handle
- _____ 34. **P-Imp Star of David 9" ruffled bowl--Sparkling
silver finish**
- _____ 35. M-Dugan Double Stem Rose 8", ten ruffle deep bowl
- _____ 36. **Brass desk lamp with marigold August Flower
shade--Great piece**
- _____ 37. Smoke-Imp Soda Gold 3 1/2" candlesticks, pair--
Scarce!
- _____ 38. **P-Imp Heavy Grape 7" ruffled bowl--Striking color!**
- _____ 39. A-N Grape and Cable cologne bottle with stopper--
Nice, nice example
- _____ 40. **B-Fenton Persian Medallion 8 1/2" round, deep
bowl--Seldom seen shape**
- _____ 41. PO-Dugan Apple Blossom Twigs 9", low ruffled bowl
- _____ 42. **Deep Purple-N Good Luck 9" ruffled bowl--Pretty
electric hues**
- _____ 43. P-N Grape and Cable pin tray
- _____ 44. **Sapphire-N #657 8 1/2" stretch candlesticks, pair--
Dark and delightful**
- _____ 45. Ice G-Fenton stretch candy dish, no lid
- _____ 46. **M-Fenton Kittens cup and saucer**
- _____ 47. Dark M-Fenton Kittens 2 1/2" tall vase/toothpick, you
call it
- _____ 48. **M-Fenton Kittens 4 1/2" 2 sides up card tray--
Lovely pastels**
- _____ 49. PO-Dugan Spiralex 10 1/2" vase, 3 7/8" base--Way
above average
- _____ 50. **Scarce Smoke-Imp Balloons 8" bulbous vase**
- _____ 51. Rich M-N Leaf Columns 6 1/4" squatty vase--Superb
color
- _____ 52. **G-N Leaf Columns 6 1/2" squatty vase--Scarce and
oh so nice**
- _____ 53. P-N Leaf Columns 6" squatty vase--Maybe the best of
the three
- _____ 54. **G-N Diamond Point 11 3/4" vase--So many blues
and purples!**
- _____ 55. P-N Diamond Point 10 1/4" vase--Also nice
- _____ 56. **G-N Flute 10 3/4" vase, 4 1/4" base--Beautiful
Alaskan finish**
- _____ 57. B-N Tree Trunk 10 3/4" vase--Electric blues on top half
- _____ 58. **P-N Thin Rib 12 3/4" mid-size funeral vase**
- _____ 59. BA-Dugan Circle Scroll 8" vase--Try finding these as
nice as this one!
- _____ 60. **Lav-Dugan Big Basketweave 10" vase--Simply the
best!**
- _____ 61. M-N Grape Arbor tankard water pitcher--Super pinks
near top
- _____ 62. **P-Imperial Fieldflower water pitcher--Purples and
golds**
- _____ 63. Pastel M-N Singing Birds water pitcher--Great detail
and lovely, lovely color
- _____ 64. **Super M-N Grape Arbor tumbler--Loaded with
pinks**
- _____ 65. Dark M-N Grape Arbor tumbler
- _____ 66. **P-N Dandelion tumbler--rib interior**
- _____ 67. P-N Dandelion tumbler--rib interior
- _____ 68. **P-N Dandelion tumbler--rib interior, each of these
three are nice, but just a little different iridescent hues**
- _____ 69. P-N Three Fruits 9" ruffled bowl--Top notch color!
- _____ 70. **P-N Three Fruits 9" plate--Nice eye appeal**
- _____ 71. Lav-N Grape and Cable PCE bowl--Fantastic and
unusual green, pink and yellow lustrous hues
- _____ 72. **B-Sowerby covered hen on nest--Fine example**
- _____ 73. Amber-Imp Grape 7 pc water set--Marked IG. You will
never find a better matched set
- _____ 74. **M-Imp Grape 5 pc water set--Old and super!!!!**
- _____ 75. M-N Oriental Poppy tankard water pitcher--Radium
pinks and blues
- _____ 76. **M-N Oriental Poppy tumbler--Also super**
- _____ 77. Pumpkin M-N Acorn Burrs water pitcher--Exceptional
- _____ 78. **Pumpkin M-N Acorn Burrs tumbler--Wow**
- _____ 79. Awesome M-Rose Garden 8 1/4" pitcher--Radium and
colorful
- _____ 80. **M-N Acorn Burrs punch cups--4 x \$--Nice times
four**
- _____ 81. P-N Acorn Burrs punch cups--5 x \$
- _____ 82. **G-N Acorn Burrs punch cups--4 x \$--All these punch
cups are very nice**
- _____ 83. M-Pyrex No. 63 insulator
- _____ 84. **M-Imp Zipper Loop 8" lamp, 5 1/2" base--Boys and
girls this one is pretty!**
- _____ 85. Smoke--Imp Grape water pitcher, not marked, but we
think this had an IG on it at one time
- _____ 86. **M-Imp Lustre Rose 7 pc water set**
- _____ 87. Smoke-Imp Grape 10" handled basket--Nice find
- _____ 88. **M-Imp Ripple mid-size 16 1/4" vase, front height 11
1/2", creating a great look to this vase**
- _____ 89. M-Fenton #916 14" vase--Great color
- _____ 90. **B-Fenton #916 15 1/2" vase--Multi electric**
- _____ 91. M-Fenton #916 16" vase--Dark, rich color
- _____ 92. **G-Hobnail Variant 15 3/4" mid-size vase, 9 hobs and
flames, 4 1/4" base--Radium and beautiful**
- _____ 93. PO-Dugan Wide Rib 11 1/2" vase, small opening, huge
base
- _____ 94. **P-Dugan Maple Leaf 7 pc stemmed berry set,
Peacock tail interior--Seldom seen**
- _____ 95. M-Fenton Stag and Holly 10 1/2", ruffled, ball ftd bowl
- _____ 96. **P-N Grape and Cable bonbon**
- _____ 97. Electric B-Fenton Persian Medallion 10" ruffled bowl--
Just about as good as these get
- _____ 98. **M-Fenton Persian Medallion 9" plate--Scarce**
- _____ 99. G-Fenton Persian Medallion 9 3/4", 3 in 1 edge bowl--
Another looker
- _____ 100. **Pumpkin M-Fenton Orange Tree 9 3/4" flat plate--
This one will steam your lenses**
- _____ 101. B-Fenton Orange Tree 9 1/2" plate--Excellent colors
- _____ 102. **M-Fenton Leaf Chain 9 1/4" plate--Electric pastels**
- _____ 103. M-Fenton Leaf Chain 7 3/4" plate--Little brother to #102

104. Super M-Fenton Concord 8 1/2" ruffled bowl--Extremely fine example!
105. M-Fenton Dragon and Lotus 9" ruffled bowl--Ravishing color and the base really looks pink
106. W-Fenton Orange Tree plate w/ Trunk center--Pastel blues deluxe
107. M-Fenton Holly 9" ruffled bowl
108. Scarce A-Fenton Holly 9 3/4" flat plate--The iridescence suggests it is green, but it isn't. Beautiful!
109. M-Fenton Peacock Tail 5 1/2" round bowl
110. B-Fenton Peacock Tail 6 1/4" plate--Radium silver gem
111. M-Fenton Persian Medallion 6 1/4" plate--Smooth exterior
112. Yellow Vas-Fenton Horse Medallion footed nut bowl--Boy, is this a dandy!
113. M-Fenton Sailboats wine glass--dark, dark, dark
114. Smoky Blue-Fenton Horse Medallion footed rosebowl--Truly an unusual find.
115. Sapphire-N stretch #727 Twist 7 1/4" vases--2 x \$, Plate 636 in stretch book--One is a fabulous find, much less two!
116. Sapphire-N stretch Optic Swirl 10 1/2" flattened rim bowl--Plate 522 in stretch book--Awesome color and so tough to find
117. Teal-Imp Double Scroll stretch console bowl, Imperial called this color Green Ice!
118. Teal-Imp Double Scroll stretch 8 1/2" candlesticks, pair--VERY scarce, a great match!
119. Russet-N #369 stretch 8 3/4" single candlestick
120. Jade Green-N 8 3/4" candlestick, non-iridized, but a cool piece
121. Topaz (vaseline)-N #369 stretch 8 3/4" single candlestick
122. Ice G Vaseline-Diamond 8 3/4" stretch candlestick--Glow!--Plate #64 in stretch book
123. Celeste-Diamond 9 3/4" stretch candlestick/vases, pair--Plate #66 in stretch books
124. W-Palm Beach cider pitcher--Alluring pastels
125. W-Palm Beach tumbler
126. M-Fenton Bouquet 7 pc water set--Very nice set
127. B-Fenton Floral and Grape water pitcher--Magnificent Electric Pitcher, shades required!!!
128. W-Fenton Grape and Cable 7 1/2", round, spat ftd bowl--How many have you seen in white????
129. M-Imp Grape 5" round berry bowls--3 x \$
130. W-Dugan Dahlia small berry bowls--5 x \$
131. Extraordinary Clambroth-Imp Blaze 9 1/4" round bowl--WAY underrated
132. Honey Amber--Cosmos and Cane butter dish with lid--Fantastic
133. B-Fenton Dragon and Lotus 9" ruffled bowl--Delightful blues
134. Cherry Red-Fenton Peacock and Grape 8 1/2" ruffled, COLLAR BASE bowl--This is a prize!
135. B-Fenton Sailboats 6 1/4" ruffled bowl--Great strike, excellent detail
136. Horehound-N Daisy and Plume/Blackberry interior footed 8" ruffled bowl--Rare color
137. Radium M-Fenton Pine Cone 6 1/4" plate--Find one better!
138. B-Fenton Illusion bonbon--This one rarely turns up in any color
139. BA-Dugan Dogwood Sprays 9", ten ruffle bowl--Mind Blowing Electric, normal mold roughness around base
140. P-N Hearts and Flowers 8 3/4" ruffled bowl--Most unusual to find with a Basketweave exterior
141. B-N Peacocks 8 3/4" ruffled bowl--Electric tints
142. ULTRA RARE Powder B-N Peacocks 9" ruffled bowl--Lots of opal, pastel purples and blues. What does yours look like?
143. G-N Peacocks 9" ruffled bowl--Attractive
144. Pastel AO-N Peacocks 9" ruffled bowl--Scintillating pastel hues, a winner!
145. M-N Peacocks 9" ruffled bowl--Pastels to beat the band!
146. A-N Peacocks 9" ruffled bowl--Exceptionally scarce and exceptionally nice!
147. A-N Strawberry PCE bowl--Lavender iridescent treatment, gorgeous
148. M-N Strawberry PCE bowl--Delicious radium finish
149. Exquisite G-N Strawberry 9" bowl--Extraordinary eye appeal
150. Pastel M-N Strawberry 9" ruffled bowl--Plain exterior, another top shelf piece
151. M-N Stippled Strawberry PCE bowl--Glowing pastel hues
152. M-N Three Fruits 8 1/2" ruffled bowl--BW exterior, delightful color
153. Emerald G-N Three Fruits 8 1/2" ruffled bowl--They just don't turn up looking this good!!
154. P-N Three Fruits 8 1/2" ruffled bowl--Electric all the way!
155. P-N Nippon PCE bowl--Fantastic!
156. M-N Nippon PCE bowl--BW exterior, just superb color!
157. Aqua-N Nippon PCE bowl, has soft opal tips--Check this out!
158. Lime G-N Stippled Strawberry PCE bowl--Only one we've heard of, but has base fracture
159. Pumpkin M-N mid-size Tree Trunk vase
160. Horehound-N Poppy Show plate--A show stopper, except it was repaired
161. Emerald G-N Poppy Show plate--Collar base fracture
162. W-N Poppy Show ruffled bowl--Creamy pastels
163. B-N Poppy Show ruffled bowl--Luscious multi-color gem
164. M-N Poppy Show ruffled bowl--Eye popping pastels
165. M-N Poppy pickle dish--Stunning pastel finish
166. A-N Grape and Cable 6" ruffled berry bowl
167. Electric P-Imp Grape Carafe--A deep purple with delicious grapes
168. W-Satin iridized 8" vase, signed Northwood in script, but it is contemporary
169. B-Fenton Panther ruffled sauce--Fairly scarce color for these
170. Rare W-Fenton Panther 5 1/2" ruffled sauce--Radium silver finish
171. True Blue Opal-N Stippled Three Fruits Medallion ruffled bowl--2" of opal, a splendid piece
172. Sapphire-N round Bushel basket--Top notch rarity!
173. Cherry Red-Fenton Dragon and Lotus 8 1/2" ICS bowl--Small marie chip, silver satin finish
174. Blue Opal--Fenton Holly 9" ruffled bowl--An impressive find, check out this dandy!
175. PO-Westmoreland Carolina Dogwood 9" plate--Another great scarcity
176. PO-Westmoreland Daisy Wreath 8 1/2" plate--Genuinely rare and nice!
177. Radium M-Field Thistle 9 1/2" plate--Wonderful iridescence and very scarce
178. A-Dugan Fanciful 8" ICS bowl--Hard to find one better than this piece
179. Pumpkin M-N Stippled Three Fruits ruffled bowl--Achingly beautiful
180. M-N Stippled Three Fruits Medallion 8 3/4" ruffled bowl--Pretty
181. P-Dugan Apple Blossom Twigs 9" smooth edge plate--Stretchy and oh so nice!
182. Near Emerald Green-N Sunflower 8" spat ftd bowl--Marvelous front and back
183. Electric B-N Grape and Gothic Arches tumbler
184. G-N Acorn Burrs tumbler--Always in demand
185. P-N Dandelion tumbler--Electric avenue!
186. Royal B-Fenton Lattice and Grape tumbler--Electric hues, a winner!
187. B-Stork and Rushes beaded tumblers--6 x \$

- _____ 188. Outstanding M-Imp Grape 7 pc water set, perfectly matched set
_____ 189. B-Imp Robin water pitcher--marked IG
_____ 190. W-Imp Robin water pitcher--marked IG
_____ 191. Frosted Lime G-Imp Grape 7 pc wine set--marked IG
_____ 192. Superb M-Imp Lustre Rose 4 piece table setting
_____ 193. M-Imp Lustre Rose 11" flared centerpiece bowl--Uncommonly nice
_____ 194. Clambroth-Imp Lustre Rose 11" flared centerpiece bowl--Alluring pastels
_____ 195. M-Dugan Many Fruits punch bowl, base and six cups--A truly nice set
_____ 196. M-Imp Fashion punch bowl, base and six cups
_____ 197. Radium M-Dugan Grape Delight rosebowl--Ever seen one this pretty?
_____ 198. M Flash w/ painted red base--Console set: 10" rolled rim bowl and pair of candlesticks
_____ 199. M-Fenton Orange Tree powder jar with lid
_____ 200. Electric P-Dugan Farmyard 10 3/4", six ruffle bowl--DANGER, BLASTING ZONE, blasting with color, that is!!! Best one I've seen!

SPECIAL NOTE:

NO SUNDAY CALLS, PLEASE!

Winning Absentee Bidders will be contacted Monday through Wednesday of the week following the Auction!

Thank You!

- _____ 201. P-Dugan Farmyard 11 1/2" ruffled bowl in a true diamond shape. Birds line up perfectly for the diamond shape, magnificent yellow center with electric purples, blues and green around the center. Save your bottlecaps for this one!
_____ 202. A-Fenton Peacock Tail ruffled compote
_____ 203. M-10 3/4" fluted master berry bowl--Radium and super
_____ 204. G-Fenton Stippled Rays 9", 3 in 1 edge bowl
_____ 205. Dark M-Sowerby Pineapple 4 1/2" cream pitcher
_____ 206. M-Imp Vintage center handle tidbit tray
_____ 207. G-Imp Grape 9 1/2" deep round bowl
_____ 208. BA-Dugan Wreathed Cherry banana boat--Silver interior
_____ 209. M-Dugan Soda Gold 6" wall pocket--Neat item
_____ 210. B-Stork and Rushes tumblers--2 x \$
_____ 211. M-Pyrex #63 insulator
_____ 212. Smoke-Imp Open Rose 8 3/4" round, flared bowl
_____ 213. M-Diamond Pinwheel 10 1/2" ruffled bowl
_____ 214. M-Imp Twins fruit bowl--Radium and colorful
_____ 215. M-Imp Grape 6" saucer--Scarce
_____ 216. Red-Fenton 10" Holly Plate--Frank Fenton 85th birthday plate (made in 2000)

SEND ALL MAIL TO:

18350 Hunters Ridge Ct.
Boonville, MO 65233

WATCH:  **Web Site: www.AWK-SHN.com**

217. Wisteria--Imp Smooth Panels 11" stretch vase--Scarce and desirable
218. **Crystal-Imp Smooth Panels 9 1/4" vase with vibrant pastel iridescence--Rare treatment on this vase!**
219. Lav-Imp Ripple 9" vase, 3 3/8" base--Great lavender iridescent treatment, too!
220. **Electric P-Imp Ripple 6 1/2" squatty vase--Dripping with color and fine, fine detail**
221. AO-N Tree Trunk 10" vase--Fiery radium pastels
222. **Multi Electric B-N Tree Trunk 10 3/4" vase**
223. P-N Tree Trunk 10 1/4" vase--Radium electric
224. **M-Rose Garden 9 1/2" cylinder vase--Simply beautiful**
225. Rich M-N Drapery 8" vase--Splendid example
226. **W-N Drapery 7 3/4" vase--Normal feet, but very lovely**
227. Ice G-N Drapery 8 1/2" vase--Scintillating color
228. **Multi Electric B-N Drapery 7 3/4" vase--This one is a baaaaad dad!**
229. W-Palm Beach 7" whimsey vase--Super find, a real treasure
230. **Emerald G-Four Pillars 13" vase--Amazing color and has that neat little spout!**
231. Emerald G-N Thin Rib 9 3/4" vase--You'll drive the tires off your car to find a prettier one
232. **ULTRA RARE P-N Tornado 6 1/2" vase, with whimsied rosebowl top. Gotta be one of a kind, at least at this time**
233. P-N Grape and Cable 9" plate--Collector favorite
234. **B-N Grape and Cable 10 3/8" master ice cream bowl--Awful darn scarce**
235. M-N Grape and Cable 10 3/8" master ice cream bowl--Vibrant color
236. **W-N Grape and Cable 10 5/8" master ice cream bowl--Ice blue pastel iridescent treatment**
237. Scarce G-N Grape and Cable 10 3/4" master ice cream bowl--Blue and fuschia center
238. **W-N Grape and Cable 10 3/4" master ice cream bowl--Radium pastel finish**
239. P-N Grape and Cable banana boat--Multi electric all the way
240. **Frosty W-N Grape and Cable banana boat**
241. Rich Ice G-N Grape and Cable banana boat--Spectacular pastel colors
242. **Ice B-N Grape and Cable banana boat--Gorgeous color**
243. B-N Grape and Cable Banded banana boat--Makes a statement!
244. **Cobalt B-N Grape and Cable, stippled, banded, 11" large fruit bowl--So tough to find!**
245. Bewitching P-Imp Grape wine decanter w/ stopper--E-LEC-TRIC all the way
246. **P-Imp Grape carafe--Soft electric, very appealing**
247. B-N Stippled Good Luck PCE bowl--Loaded with fuschias and blues
248. **Stunning Pastel M-N Good Luck PCE bowl**
249. Near Emerald G-N Good Luck ruffled bowl--BW exterior
250. **Pastel M-N Stippled Good Luck ruffled bowl--Dynamite!**
251. Electric B-N Good Luck ruffled bowl
252. **Lav-N Good Luck ruffled bowl--Divine electric purples and blues!**
253. Horehound-N Good Luck 9" plate--Great, great pastel iridescence
254. **M-N Peacock at Urn 10 1/2" ruffled bowl--If you like pastel, this one is for you!**
255. Ice B-N Peacock at Urn 5 1/2" ICS berry bowl
256. **M-N Peacocks ruffled bowl--Sizzling pinks and blues, oh my!**
257. Renninger B-N Stippled Peacocks PCE bowl--Here's a truly scarce bowl!
258. **G-N Peacocks PCE bowl--Yet another difficult color to acquire**
259. Deep Cobalt B-N Stippled Peacocks PCE bowl--Minor chip tip, but land's sake, look at the color!

260. **Astonishing Pumpkin M-N Peacocks PCE bowl--This one leaves me breathless!**
261. Lavender/Horehound-N Peacocks PCE bowl--Vivid pastels
262. **Ice B-N Peacocks 9" plate--One of the best we've seen lately**
263. **Superb Pastel M-N Peacocks 9 1/4" plate--WOW!**
264. **G-N Peacocks 9" plate--Heavy purplish iridescence, decidedly different!**
265. **B-N Peacocks 9" plate--Multi electric**
266. **W-N Peacocks 8 3/4" plate, smooth exterior--Frosty, with golds and pinks**
267. **AO-N Rose Show ruffled bowl--Impressive hues on the interior!!**
268. **Ice B-N Rose Show ruffled bowl--Pretty pastel hues**
269. True Pastel M-N Rose Show ruffled bowl--Loads of yellows!
270. **M-N Rose Show Vt. 9" plate--Interesting radium pastel treatment**
271. P-N Rose Show ruffled bowl--Find the fracture! (It's there, but this is beautiful, regardless)
272. **Ice G-N Hearts and Flowers ruffled bowl--Scarce glass color**
273. Ice B-N Hearts and Flowers ruffled bowl--Pastel pinks and yellows
274. **Electric B-N Stippled Three Fruits PCE bowl--Couple tiny flakes between points**
275. Horehound-N Stippled Three Fruits PCE bowl--Rare Basketweave exterior
276. **Pumpkin M-N Stippled Three Fruits ruffled bowl--Awash with hot pinks**
277. **VIOLET-N Stippled Three Fruits 9" plate. Multi electric finish, but I've never seen one with this base glass color!**
278. **Red-Fenton Swan mug--Contemporary**
279. B-Fenton Swan mug--Contemporary
280. **G-Fenton Swan mug--Contemporary**
281. G-ICGA 1987 souvenir enameled pitcher with CRE top
282. **Vas Opal-ACGA 1988 souvenir handled basket**
283. Marigold over Custard--1983 HOACGA souvenir loving cup
284. **Red- 1984 HOACGA souvenir Butterfly and Berry/ Good Luck fernery**
285. Ice G-1980 HOACGA souvenir Good Luck hatpin holder
286. **Red-1985 HOACGA souvenir Good Luck bell**
287. M-1988 HOACGA souvenir Good Luck bell
288. **B-1987 HOACGA souvenir Good Luck bell--no clapper**
289. Ice G opal-1986 HOACGA souvenir Good Luck bell
290. **Ice G opal-1986 HOACGA souvenir mug (table favor)**
291. Ice G opal-1986 ICGA souvenir Poppy rosebowl
292. **through 350. Lots of contemporary carnival glass, a few old carnival glass pieces, black amethyst vase and books. Not listed individually on this brochure, but pictures available. PLEASE CHECK OUT OUR PHOTO GALLERY ONLINE--HUNDREDS OF PHOTOS: www.awk-shn.com**

 **Call Today To Sell
Your Fine Items
660-882-5292 Day
660-882-5283 Evening**

CARNIVAL GLASS FALL

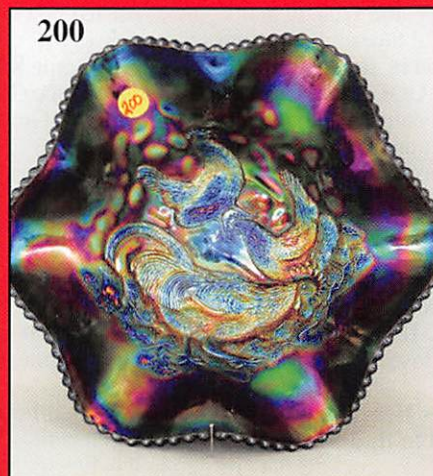
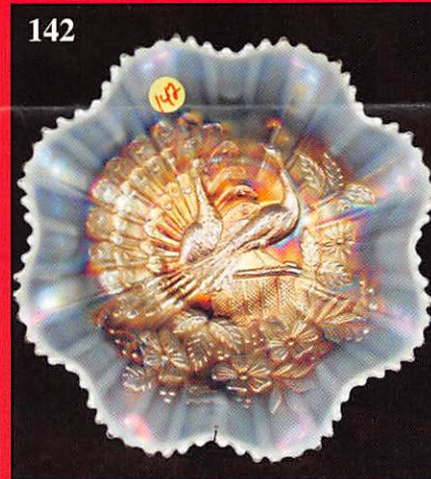
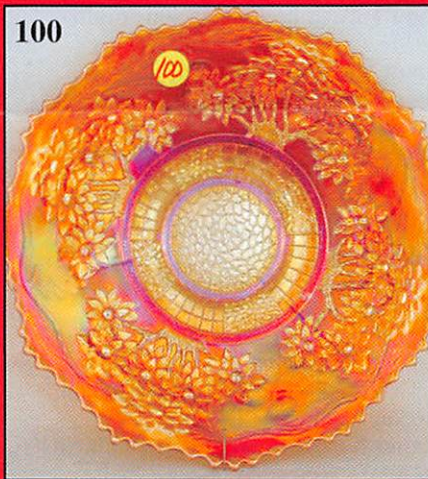
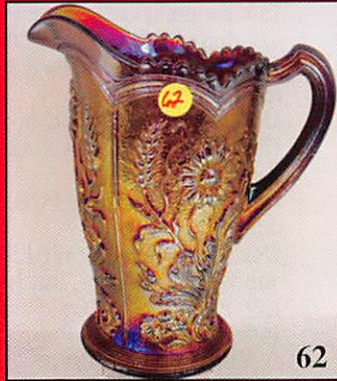
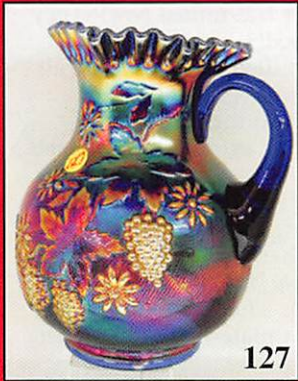
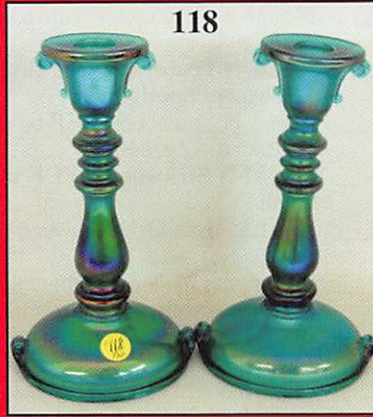
Saturday September 12th

Friday Preview : September 11th. 12:00

WEB SITE : WWW.AWK-SHN

Held at The Mickey Reichel Auction
1440 Ashley Road •

Collection from The Taylor's of Okla
Do Not Miss Out on This Great Au
A Barn Burne

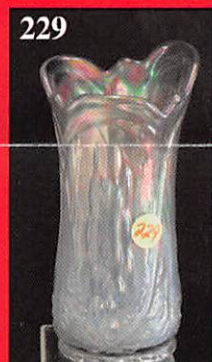
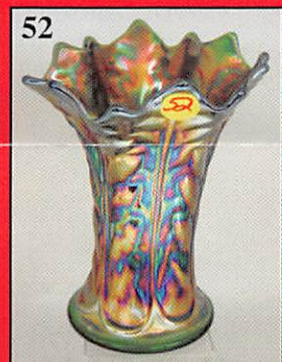
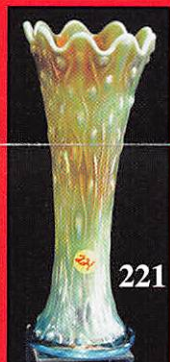
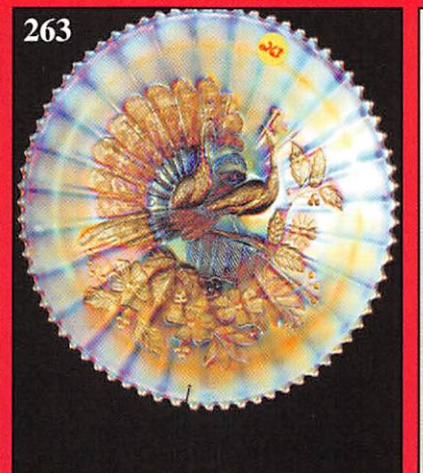
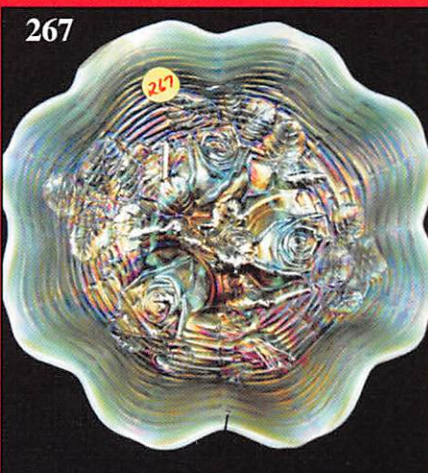
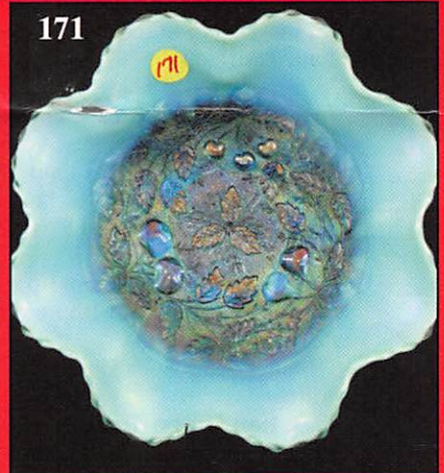
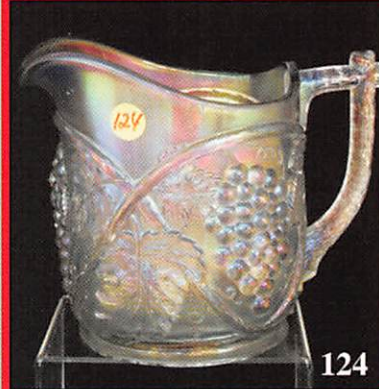
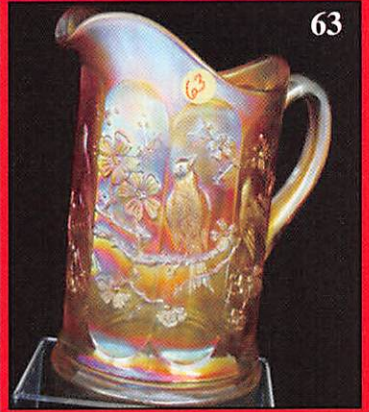


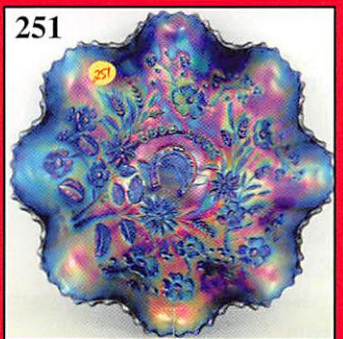
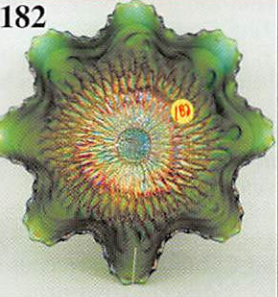
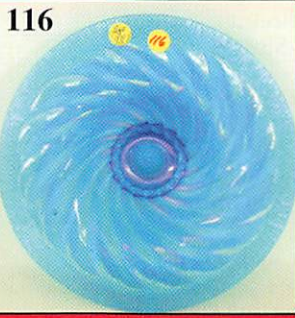
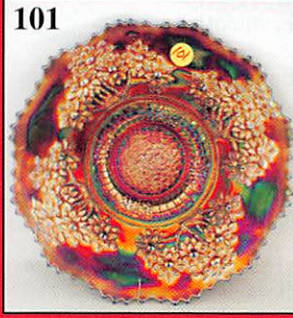
EXTRAVAGANZA AUCTION

h, 2009 - 9:00 AM Sharp
Noon till 5:00 PM & 7:30 AM Auction Day
.COM FOR PHOTO GALLERY

on Gallery and Real Estate Center
Boonville, Missouri

lahoma plus The Rudd's of Missouri
uction ~ The Best in Color & Rarity
r !!!!!!!!!!!!!!!





NO BUYERS

Make Reservations EARLY

Days Inn: 660-882-8624 • Comfort Inn: 660-882-5317

ABSENTEE B

PLEASE NOTE: There is a \$6 handling charge for each successful bid which will be added to packing. Your write-in bid will be entered just as if you are present and bidding. **Successful bid number).** Direct mail bids to Auctioneer Mickey Reichel, 18350 Hunters Ridge Ct., Boonville, MO. References. Announcements made day of the auction supercede all printed material. Not Responsible

Call for additional information: 660-882-5292

FAX: 660-882-5292 (evening hours)

E-mail: mreichel@AWK-SHN.com

Held Inside the Mickey

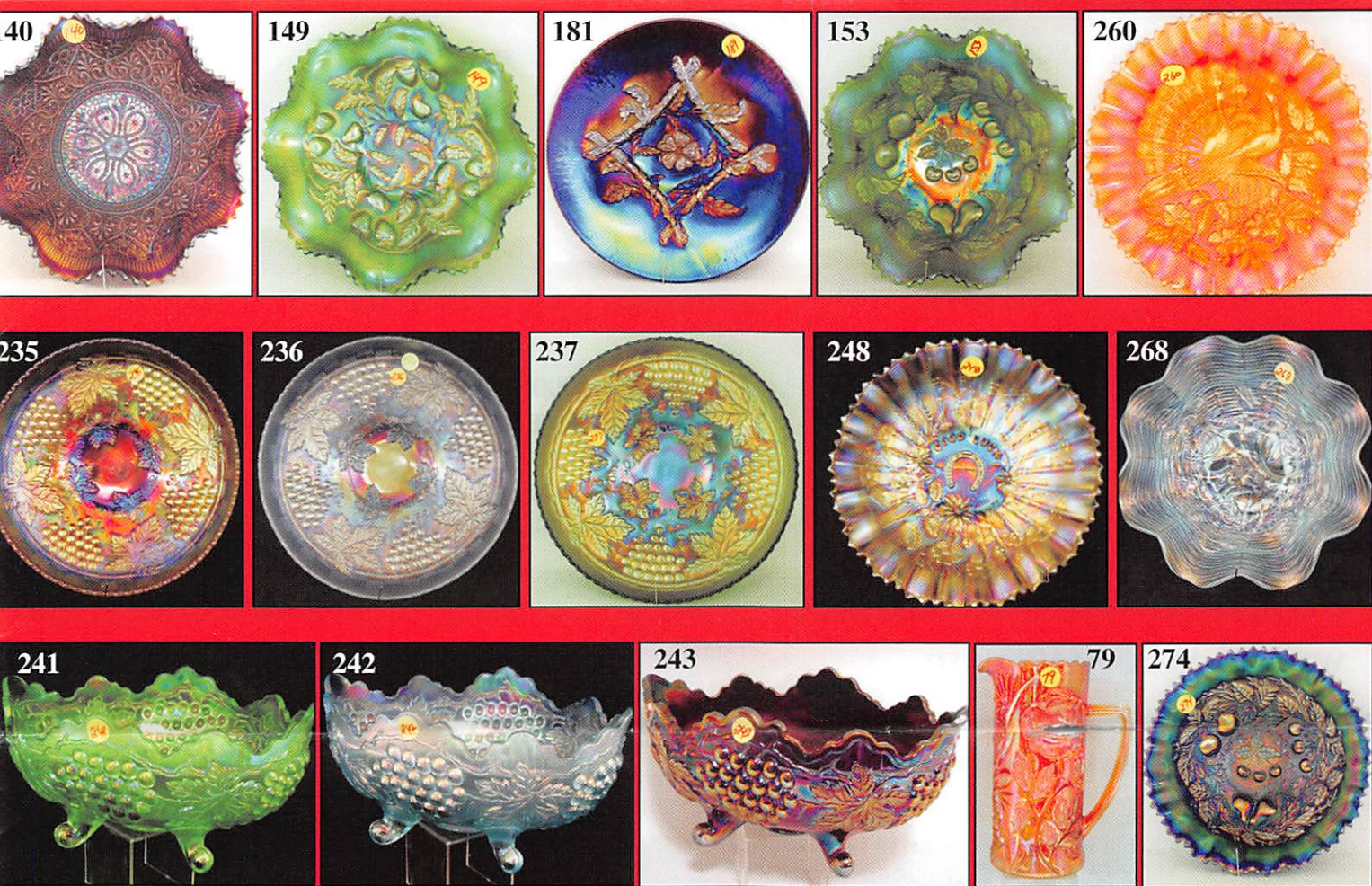
1 Mile North of I-70 on Hwy. 5, Exit 101, Boonville, MO



TERMS: Cash or Good Check,

4% Clerking Fee on all purchases except for p

***** No return on any items once they leave**



PREMIUM ★★ ★
at one of these local motels:

Super 8: 660-882-2900 • Holiday Inn: 660-882-6882

BID POLICY:

to the selling price for all write-in bids. This is in addition to the cost of postage, insurance and
 orders will be notified in 1 to 3 days by the auctioneer (so be sure to include your phone
 MO 65233-2971. Terms: Cash or Check accepted with proper I.D. and Social Security Number and
 ble for Accidents or Sold Items. Call in Bids before Auction Welcome!
 days or 660-882-5283 evenings before 9:00 p.m.

start FAX transmission after beep)

Web Site: www.awk-shn.com

Reichel Auction Center

Missouri • 20 Miles West of Columbia, MO on I-70

VISA and MasterCard accepted. 

ayment of cash or check. Proper I.D. required.

the Auction Center (No Exceptions) * * *



SEE REVERSE FOR DETAILS