

- _____ 1. Dark M-Banded Grape mug
- _____ 2. **G-N Singing Birds mug**
- _____ 3. P-N Singing Birds mug
- _____ 4. **G-Fenton Orange Tree standard size mug, scarce color**
- _____ 5. Dark M-Fenton Orange Tree standard size mug
- _____ 6. **B-Fenton Orange Tree shaving mug**
- _____ 7. Super M-Dugan Fishherman's mug--cracked and reglued
- _____ 8. **P-Dugan Beaded Shell mug**
- _____ 9. M-Imp Stippled Robin mug--OLD
- _____ 10. **Radium M-Imp Windmill milk pitcher--Way better than normal**
- _____ 11. M-Imp Grape milk pitcher
- _____ 12. **M-Imp Stippled Robin 7 pc water set--Old and good**
- _____ 13. M-Dugan Golden Harvest Wine decanter w/ stopper and 4 wines
- _____ 14. **Exquisite M-N Raspberry 7 pc. water set--Super and well matched**
- _____ 15. P-N Grape and Cable 7 pc water set--Old collector favorite
- _____ 16. **M-N Grape and Cable 7 pc water set--Also nice**
- _____ 17. Scarce B-N Peacock at Fountain water pitcher--Electric highlights
- _____ 18. **B-N Peacock at Fountain tumbler--Good match for the pitcher**
- _____ 19. M-Fenton Lattice and Grape 7 pc. tankard water set--Looks good together
- _____ 20. **Wonderful M-Fenton Butterfly and Berry 7 pc water set**
- _____ 21. A-Floral and Grape water pitcher and 5 tumblers--Not frequently seen
- _____ 22. **M-Fenton Butterfly and Fern 7 pc water set--Nice set**
- _____ 23. M-Fenton Magnolia and Drape 5 pc enamel decorated water set
- _____ 24. **M-Fenton Mikado 8-ruffle large compote--Dark and nice**
- _____ 25. **Rare Red Amberina-Fenton Dragon and Lotus 8 3/4" ICS collar base bowl--Desirable color**
- _____ 26. **Rich M-Fenton Dragon and Lotus 7 7/8" ICS collar base bowl**
- _____ 27. Superb Cobalt B-Fenton Dragon and Lotus 8 1/4" ICS collar base bowl
- _____ 28. **Luscious G-Fenton Dragon and Lotus 7 5/8" ICS, spat ftd bowl--Ice cream shape bowls are scarce when spatula footed and this one is outstanding**
- _____ 29. G-Fenton Holly 9", 3 in 1 edge bowl--Excellent color
- _____ 30. **B-Fenton Holly 8 1/2", 3 in 1 edge bowl--Equally nice**
- _____ 31. G-Fenton Grape and Cable 8", ICS, spatula footed bowl--Better example
- _____ 32. **G-Fenton Grape and Cable 8", eight ruffle BALL-FOOTED bowl--Scarce with ball feet**
- _____ 33. A-Fenton Grape and Cable 8", ruffled spat. ftd bowl
- _____ 34. **M-Fenton Grape and Cable 7 1/2", ruffled, spat. ftd bowl**
- _____ 35. G-Fenton Feathered Serpent 10", six ruffled bowl--One you don't see every day
- _____ 36. **B-Fenton Persian Medallion 8", 3 in 1 edge bowl--Nice find**
- _____ 37. B-Fenton Iris ruffled compote--Soft blue iridescence and scarce
- _____ 38. **B-Fenton Iris ruffled compote-Vibrant multi-color iridescence and equally scarce**
- _____ 39. B-Fenton Birds and Cherries ruffled compote--Fruits and Feathers!
- _____ 40. **M-Fenton Birds and Cherries ruffled compote**
- _____ 41. G-Fenton Birds and Cherries ruffled compote--More difficult color to find in these
- _____ 42. **Scarce A-Fenton Birds and Cherries ruffled compote**
- _____ 43. G-Fenton Wreath of Roses stemmed bonbon
- _____ 44. **A-Fenton Wreath of Roses stemmed bonbon**
- _____ 45. M-Fenton Wreath of Roses ruffled compote
- _____ 46. **G-Fenton Wreath of Roses ruffled compote**
- _____ 47. M-Imp Grape ruffled compote
- _____ 48. **Amber-Smooth Rays ruffled compote--scarce color**
- _____ 49. A-N Fruits and Flowers stemmed bonbon
- _____ 50. **Ice B-N Fruits and Flowers stemmed bonbon--Unusual clear radium finish, quite different**
- _____ 51. M-Dugan Coin Spot ruffled compote
- _____ 52. **B-Fenton Scotch Thistle candy ribbon edge ruffled compote**
- _____ 53. M-Fenton Holly ruffled compote
- _____ 54. **G-Fenton Stippled Rays ruffled compote**
- _____ 55. M-Fenton Peacock at Urn ruffled compote
- _____ 56. **W-Fenton Peacock at Urn ruffled compote--Frosty!**
- _____ 57. GREAT Vaseline-Fenton Peacock at Urn ruffled compote Positively radiates the vaseline color, even without a black light with great yellow pastel iridescence!
- _____ 58. **A-Fenton Blackberry Bramble ruffled compote**
- _____ 59. B-Fenton Blackberry miniature compote
- _____ 60. **Frosty W-N Hearts and Flowers ruffled compote**
- _____ 61. **Rare B-N Wishbone 8" ruffled, ftd bowl--Great electric colors**
- _____ 62. **A-N Wishbone 8 1/2" ruffled, ftd bowl**
- _____ 63. G-N Wishbone 8" ruffled, ftd bowl--Has great green iridescence
- _____ 64. **P-N Grape and Cable Vt. 9" plate--Smooth back**
- _____ 65. Enchanting P-N Grape and Cable Vt. 8 1/2" ruffled bowl--BW ext
- _____ 66. **Pastel M-N Grape and Cable bonbon--You'll like this one**
- _____ 67. Dark M-N Smooth Rays bonbon
- _____ 68. **G-N Smooth Rays card tray shape bonbon--Radium**
- _____ 69. W-N Fine Cut and Roses 7" ruffled bowl--Fancy interior, pastel colors, normal feet
- _____ 70. **Frosty W-N Bushel basket, eight-sided--Buffing on one foot**
- _____ 71. P-N round Bushel basket--Electric highlights
- _____ 72. **Pumpkin M-N round Bushel basket**
- _____ 73. M-Fenton Peacock Tail 8" CRE bowl--Love that rim treatment!
- _____ 74. **M-Fenton Two Flowers 5 1/2", spat ftd rosebowl**
- _____ 75. M-Fenton Panther 5 1/4" ruffled berry bowl
- _____ 76. **Aqua-Fenton Acorn 6 1/2" round bowl--Scarce color**
- _____ 77. Dark M-Vintage (Grape) 5" round berry bowl
- _____ 78. **B-Fenton Vintage (Grape) 8 3/4" ruffled bowl--Very pretty**
- _____ 79. A-Fenton Vintage (Grape) 5 1/2" round sauce bowl
- _____ 80. **G-Fenton Vintage (Grape) 10" ruffled bowl--Smooth rim, six grape clusters**
- _____ 81. G-Fenton Vintage (Grape) 7" ruffled bowl
- _____ 82. **Blue-Fenton Vintage (Grape) 9 1/2", ICS bowl--Loaded with color, star base**
- _____ 83. B-Fenton Cherry Chain 6" ruffled sauce
- _____ 84. **M-Fenton Cherry Chain Vt. (Six cherries in cluster) 10", eight ruffle bowl**
- _____ 85. B-Fenton Vintage (Grape) 6" round bowl
- _____ 86. **M-Fenton Horse Medallion ftd rosebowl**
- _____ 87. G-Fenton Horse Medallion 7 1/2", eight ruffle, ball ftd bowl--Unusual
- _____ 88. **M-Fenton Horse Medallion 6 3/4", ICS, collar base bowl--Great detail**
- _____ 89. M-Fenton Dragon and Lotus 8", spat ftd, ruffled bowl
- _____ 90. **M-Fenton 9 1/2" Peacock at Urn plate--Loaded with pastel blues and pinks**
- _____ 91. B-Fenton Orange Tree hatpin holder
- _____ 92. **P-Fenton Thistle banana bowl--Scarce color**
- _____ 93. Smoke-Imp Acanthus 8" round bowl
- _____ 94. **M-Imp Hobstar Flower ruffled compote--Radium and nice**
- _____ 95. **M-Illinois Soldiers and Sailors Home 8" plate--Outstanding color**
- _____ 96. **Sapphire Opal-Fenton Blackberry Spray ruffled compote--Oh so scarce and oh so nice!**
- _____ 97. M-Fenton Blackberry Spray 5 1/2" square compote
- _____ 98. **B-Fenton Blackberry Spray 6 1/4" square compote--Only two sets of berries**
- _____ 99. B-Fenton Blackberry Spray 5 3/4" square compote--Ruffles are actually turned in on this one, odd radium finish!
- _____ 100. **G-Fenton Peacock Tail ruffled compote--Advertising for Quincy Jewelers on base**
- _____ 101. B-Fenton Peacock Tail 6 1/2", four sides up compote

102. B-Fenton Blackberry Banded 5 1/2" ruffled compote
103. B-Fenton Holly 6" ruffled hat
104. Vaseline-Fenton Holly 6 1/2", 2-sides up hat--Another top notch vaseline piece
105. B-Fenton Holly 6", JIP, CRE hat
106. Dark M-Fenton Flowering Dill ruffled hat--Overlooked pattern
107. B-Fenton Vintage (Grape) 7" ruffled bowl
108. Vaseline-Fenton Vintage (Grape) 7" ruffled bowl--Neat, neat item
109. B-Fenton Persian Medallion 6" ruffled bowl
110. A-Fenton Vintage (Grape) 9" ruffled bowl
111. M-Fenton Open Edge 2-row 6" basket, 2 sides up
112. B-Fenton Open Edge 2-row 5 1/2" ruffled basket
113. M-Fenton Blackberry Open Edge 2-row 6 1/2" ruffled bowl
114. M-Fenton Blackberry Open Edge 2-row 7" 2 sides up bowl
115. M-Fenton Open Edge 2-row 6" JIP hat--Gorgeous
116. A-Fenton Butterfly 7" card tray shape bonbon
117. M-Fenton Butterfly 7" card tray shape bonbon
118. M-Fenton Persian Medallion 7" four sides up bonbon--Nice color
119. A-Fenton Butterfly 7" bonbon
120. G-N Paneled Holly bonbon--Very pretty
121. Rich M-Imp Star and File 6 1/2" round bonbon--Look at the color!
122. M-Fenton Birds and Cherries 7" bonbon--Well detailed
123. A-Fenton Vintage (Grape) 7" bonbon
124. B-Fenton Water Lily 9", ball ftd, ICS bowl--Wow, is this one beautiful
125. M-Fenton Water Lily 10" ruffled, ftd bowl
126. G-Fenton Stag and Holly 8" ICS, spat ftd bowl--Splendid satins
127. G-Fenton Stag and Holly 8" ruffled, spat ftd bowl--Scarce color
128. Deep B-Fenton Stag and Holly 8" ruffled, spat ftd bowl--Lots of color down inside the bowl
129. M-Fenton Dragon and Lotus 9 1/4", 3 in 1 edge bowl--Silver finish
130. A-Fenton Thistle 8 1/2", 3 in 1 edge bowl--Better example
131. M-Fenton Heart and Vine 9" ruffled bowl--Pumpkin
132. M-Fenton Peacock and Grape 9", ruffled, collar base bowl--Delightful hues
133. G-Fenton Peacock and Grape 9", ruffled, collar base bowl--Equally nice
134. M-Fenton Vintage Grape Fernery-- with 5 1/2" deep opening, almost a nut bowl and a dandy
135. A-Fenton Vintage Grape Fernery--Beautiful
136. G-Fenton Vintage Grape Fernery--Radium gem
137. M-Fenton Stag and Holly 10", ICS, footed bowl--A collector favorite
138. M-Fenton Two Flowers 9 1/2" ruffled, deep, footed bowl--Fine, fine example
139. Beautiful M-Fenton Orange Tree ruffled fruit bowl
140. A-Fenton Grape and Cable/Persian Medallion ruffled fruit bowl--Impressive color inside and out
141. M-Fenton Grape and Cable/Persian Medallion ruffled bowl--About as good a marigold one as you'll ever see
142. M-N Grape and Cable 11" large fruit bowl--Powerful nice
143. P-N Grape and Cable Vt 9" ruffled bowl--Sweet
144. M-N Peacocks 9" PCE bowl--Rib exterior, always in demand
145. G-N Three Fruits Medallion 9" ruffled, spat ftd bowl--Scarce color for these and pretty
146. G-N Star of David and Bows 8" ruffled, dome ftd bowl
147. Lav-N Sunflower 7 1/2" ruffled, deep nut bowl--Uncommon color for these
148. M-N Good Luck PCE bowl, BW exterior--Everybody wants one
149. Deep P-N Good Luck PCE bowl--Killer electric color
150. M-Dugan Pony 8", six ruffle bowl--Great example
151. Ice G-Dugan Pony 8 3/4", ten ruffle bowl--Stretchy, luscious colors, glows wildly--You're in the winner's circle with this one!
152. P-Dugan Pony 9", ten ruffle bowl--Stunning and seldom seen in this color
153. Rare Aqua-Dugan Pony 8 1/2", six ruffle bowl--Super piece
154. Awesome Pastel M-N Drapery rosebowl
155. M-N Three Fruits 9 3/8" flat plate--NO wear and tear on this one
156. M-Thin and Wide Rib 3 3/4" tall flower arranger, 6 1/4" across--Divine!
157. M-N Strawberry 8 3/4" ruffled bowl, plain exterior--Pastels deluxe
158. Citrine Stretch-N Colonial #695 8 1/2" candlesticks--Pair
159. Red Amberina-Imp Double Scroll 8 1/4" candlesticks--Pair
160. Dark Ice B Stretch-Fenton Cornucopia #950 candleholders--Pair
161. W-N Peacocks ruffled bowl--Rainbow of pastels on this great item
162. Ice G-N Grape and Cable 6" turned up saucer--Got the cup?
163. M-N Peacock at Urn 9 3/4" ICS bowl--Scarce full stippling
164. P-N Peacock at Urn 10 1/4" ICS bowl--Multi electric
165. P-N Peacock at Urn 5 1/2" ICS bowl--Very attractive iridescence
166. P-N Grape and Cable w/ Thumbprint 9" round master berry bowl--This one's a winner for color
167. P-N Grape and Cable w/ Thumbprint 5" round berry bowl--If you buy #166, you need this one, too!
168. Killer M-N Grape and Cable w/ Thumbprint 9" round master berry bowl--Wowser!!!
169. M-N Grape and Cable w/ Thumbprint 5" round berry bowl--2 x \$
170. M-N Grape and Cable 10" ruffled bowl, BW exterior--Nice greens in the center on this bowl
171. M-N Grape and Cable 6", six ruffle berry bowls--5 x \$
172. P-N Grape and Cable 11" ruffled bowl--Lots of color here, folks
173. P-N Grape and Cable 6" ruffled berry bowls--5 x \$
174. M-N Peacock at Fountain 9" round master berry bowl--Color out of this world, flaw on base rim but with this color, SO WHAT!
175. G-N Grape and Cable covered sugar--The base could easily pass for emerald green
176. Nice G-N Grape and Cable spooner
177. Rich M-N Grape and Cable spooner--Fabulous
178. Pastel M-N Grape and Cable creamer
179. M-N Grape and Cable butter dish and lid--Hot pinks all over this piece
180. BA-N Grape and Cable hatpin holder--Shimmering silver iridescence
181. P-N Grape and Cable cologne bottle, no stopper--Great color
182. M-N Grape and Cable 5" stemmed sherbets--3 x \$
183. P-N Grape and Cable open breakfast sugar bowl--Large beauty on a small piece
184. Scintillating Pastel M-N Fine Cut and Roses rosebowl
185. P-N Fine Cut and Roses rosebowl
186. M-N Three Fruits 8 3/4" ruffled bowl--Pinks and blues
187. G-N Lead and Beads rosebowl--Radium w/ rayed interior
188. M-N Blossom and Shell 9" ruffled bowl
189. AO-N Daisy and Drape flared vase
190. G-N Fine Rib Footed JIP vase--Very scarce and very nice
191. G-N Beads 8" ruffled bowl
192. Super Pastel M-N Grape and Cable w/ Thumbprint 5" round berry bowls--4 x \$
193. G-N Grape and Cable banana boat--Breathtaking color inside

194. P-N Grape and Cable sweetmeat compote w/ lid--
Top notch color
195. G-N Grape and Cable 8 3/4" ruffled bowl--Loads of
blues on the interior
196. P-Imp Grape water carafe--Radium multi-color
iridescence
197. Smoke-Imp 4 3/4" Corn bottle--Smoking Color!!!
198. Smoke--Imp Tulip and Cane 5 1/2" ruffled bowl
199. Electric B-N Grape and Cable Vt. stippled PCE
bowl--Mind boggling color
200. P-N Grape and Cable Vt. 9" stippled plate--Rare in
purple, don't miss out on this gem!!!
201. M-Dugan Cherries 8", ten ruffle, footed bowl
202. PO-Dugan Ski Star/Compass 11", eight ruffle bowl--
Big bad dad
203. PO-Dugan Stippled Flower 8" ruffled bowl
204. PO-Dugan Four Flowers 6 3/4" plate--Dark and
pretty
205. M-Fenton Orange Tree powder jar--Chip on rim of lid
206. M-N Grape and Cable powder jar
207. M-Dugan Cosmost Vt. 9 1/2" ruffled bowl
208. P-Dugan Double Stem Rose 8 1/2", ten ruffle bowl--
Scarce and nice
209. M-Dugan Mary Ann two handle vase--Radium

210. M-Dugan Windflower tricorn nappy--Lavender
tint to glass
211. B-Dugan Fanciful 9" plate--Interior fracture
212. A-Dugan Golden Harvest wines--2 x \$
213. M-N Fruits and Flowers 6" ruffled berry bowl
214. M-Fenton Beaded Stars 3 3/4" rosebowl--
Uncommon item
215. W-Dugan Persian Garden 6" ICS bowl
216. W-Dugan Grapevine Lattice 7" ruffled bowl--Great
pastels
217. W-Fenton Peacock at Urn 9 1/4" plate--Purples and
golds
218. W-Fenton Peacock at Urn 8 3/4" ruffled bowl--It's
got the blues!
219. W-Dugan Fanciful 8 1/4" ICS bowl--Lots of pastel
hues
220. W-Dugan Fanciful 9 1/2" low ruffled bowl--Pastel
monster
221. W-Dugan Roundup 9" ruffled bowl--Pinks and blues
222. W-Fenton Leaf Chain 7" round bowl--Unusual
color for this pattern
223. W-Fenton Orange Tree 9 3/8" plate, Bearded Berry
exterior
224. W-Dugan Garden Path Vt. 9 1/2" round bowl, Soda
Gold exterior--Fine pastel colors

SPECIAL NOTE:

NO SUNDAY CALLS, PLEASE!

Winning Absentee Bidders will be contacted Monday through Wednesday of the week following the Auction!

Thank You!

SEND ALL MAIL TO:

18350 Hunters Ridge Ct.

Boonville, MO 65233

WATCH:  **Web Site: www.AWK-SHN.com**

225. P-N Grape and Cable small punch bowl, base, four cups
226. Radium M-Imp Broken Arches ruffled punch bowl and base--Much scarcer than you might think, don't overlook this one, it's a beauty!
227. Radium M-Imp Broken Arches round punch bowl and base--Also beautiful and also uncommon. Why not buy both sets?
- 227A. M-Imp Broken Arches punch cups, well-matched--8 x \$
228. M-Imp Fashion punch bowl, base, six cups
229. M-Imp 474 round punch bowl, base and seven cups--Colorful radium finish, very attractive
230. M-Imp Waffle block round punch bowl top and five cups (no base)
231. G-Mlbg Blackberry Wreath 7 1/2" ruffled bowl
232. M-Mlbg Hanging Cherries 7 1/2" ruffled bowl--Neat inbetween size
233. M-Mlbg Blackberry Wreath 9" ruffled bowl--Dark and pretty
234. P-Mlbg Nesting Swan 9 3/4" ruffled bowl--Radium interior w/ lots of purples
235. G-Mlbg Grape Wreath Vt. 7", 3 in 1 edge bowl
236. Radium G-Mlbg Holly Whirl 10" ruffled bowl
237. B-Fenton 15 1/4" Fine Rib vase
238. M-Fenton 12" Fine Rib vase
239. P-N Memphis punch cups--2 x \$
240. M-N Acorn Burrs punch cups
241. P-N Peacock at Fountain punch cup
242. M-Imp Octagon punch cups--Never seen a punch set, these are scarce--2 x \$
243. M-Fenton Orange Tree punch cup
244. M-Fashion punch cups--5 x \$
245. Clambroth-Fenton Orange Tree 9 1/2" plate
246. A-Mlbg Hanging Cherries 10" ICS bowl--Delightful color in center
247. P-N Peacocks 9" plate--Electric hues
248. M-N Peacock at Urn fully stippled 10" ICS bowl
249. Electric B-N Peacock at Urn 5 1/2" ICS bowl
250. Ice G-N Peacocks 9 1/4" plate--Pastel blues and purples
251. M-Imp Twins fruit bowl and base--Radium beauty
252. B-Fenton Peacock at Urn 8 1/4" ICS bowl--Scarce shape and above average color
253. M-Water Lily bonbon
254. Cherry Red-Fenton Open Edge 2-row 6" 2 sides up hat--Very, very nice
255. Ice G-N Corn vase w/ stalk base
256. Ice G Vaseline-Fenton Open Edge 2-row 6" square basket--Glow like crazy
257. G-Mlbg Seacoast pin tray--Very good color, great detail and conditon-wise, one of the best I've seen lately
258. BA-Dugan Beaded Shell mug
259. M-Dugan Beaded Shell mug
260. Electric P-Dugan Cherries 9 1/4" ruffled bowl, Jeweled Heart exterior--As good as these get!
261. G-Fenton Thistle banana boat--Grand iridescence inside and out
262. B-Fenton Little Fishes 9 1/2" ruffled, ball ftd bowl--A prize catch
263. G-N Wishbone 9 3/4" ruffled, collar base bowl
264. B-Fenton Concord 8 1/2" ruffled bowl--Tough color
265. M-Fenton Diamond Point Columns 6" squatty vase, 3 1/2" base--Crisp and clean
266. Radium Pumpkin M-Fenton Boggy Bayou 5 1/2" squatty vase
267. Dark M-Imp Rococo 4 1/2" vase--Pretty as they come
268. M-Fenton Rustic 15 1/2" vase with CRE top, 4" base
269. M-Imp Mini Morning Glory 5 1/4" vase--Outstanding
270. B-Fenton Rustic 19 1/4" funeral vase, 5 1/4" base--Stretch your dollar on this one!
271. W-N Daisy and Drape vase, cupped in top
272. PO-Westmoreland Corinth 9" JIP vase, opal top to bottom
273. Beaded carnival glass evening bag with change purse
274. Beaded carnival glass 3 1/2" purse--Great size and

great look

275. Beaded carnival glass drawstring purse
276. PO-Nautilus creamer--Signed Northwood in script
277. Red-Windmill 8" ruffled bowl--Contemporary
278. RARE M-N Cherry and Cable water pitcher--Very nice color on this rarity
279. P-Fenton Hearts and Flowers 10 3/4" centerpiece bowl with candy ribbon edge--Marked Fenton
280. Cobalt B-N Rose Show 9 1/2" plate--Enchanting iridescence, don't miss out on this one
281. P-Diamond and Button (?) ruffled, CRE compote--Contemporary, marked, unfamiliar with mark
282. Pumpkin M-N Rose Show 9 1/2" plate--Fabulous blues and pinks, another top item in this sale
283. Outstanding M-N Rose Show 8 3/4" ruffled bowl--Like a brother to #282.
284. Box lot of three damaged carnival glass pieces
285. Book-Opalescent Pattern Glass by Marion Hartung, new old stock--Choice of 5 copies
286. Collection of Hartung carnival glass books #1-10
287. G-Fenton Butterfly and Berry tumbler--A rare beauty
288. B-Fenton Butterfly and Berry tumblers--3 x \$
289. M-Fenton Butterfly and Berry tumblers--2 x \$
290. B-Dugan Peacock at Fountain tumblers--6 x \$
291. Dark M-Imp Robin tumbler
292. M-Fenton Butterfly and Fern tumblers, with collar bases--4 x \$
293. Radium M-Waterlily and Cattails tumbler
294. A-Fenton Blackberry Block tumbler--SCARCE
295. M-Fenton Blackberry Block tumblers--2 x \$
296. B-Fenton Blackberry Block tumbler
297. B-Fenton Bouquet tumbler
298. Electric B-N Peach tumbler
299. P-N Acorn Burrs tumbler
300. ASTONISHING Electric P-N Oriental Poppy tumbler
301. B-Fenton Butterfly and Fern tumbler, factory ground base
302. W-Fenton Floral and Grape tumbler--Scarce and loaded with pastels
303. M-Imp Fashion tumbler--Excellent
304. G-Imp Windmill tumbler
305. M-Imp Windmill tumbler
306. M-Stork and Rushes Lattice Band tumblers--2 x \$
307. M-Stork and Rushes, Beaded tumblers--3 x \$
308. M-Lattice and Grape tumblers--2 x \$
309. M-Dugan Lattice and Daisy tumbler
310. P-N Oriental Poppy tumbler--Electric!
311. M-Grapevine Lattice tumbler
312. M-N Peacock at Fountain tumbler
313. M-Dugan Peacock at Fountain tumbler
314. M-Vineyard tumbler--Gorgeous, has base nick
315. M-Grape Arbor tumbler
316. P-N Oriental Poppy tumbler--If you didn't get the other two, better buy this one
317. M-Floral and Grape tumblers--2 x \$
318. Super M--Cactus tumbler--If it isn't old, it sure is good!
319. B-Enameled Cherries tumblers--6 x \$
320. M-Iris and Herringbone 9" plate
- 321-335-----Box lots of miscellaneous carnival glass pieces
336. Choice carnival glass book

 **Call Today To Sell
Your Fine Items
660-882-5292 Day
660-882-5283 Evening**

GREAT CARNIVAL

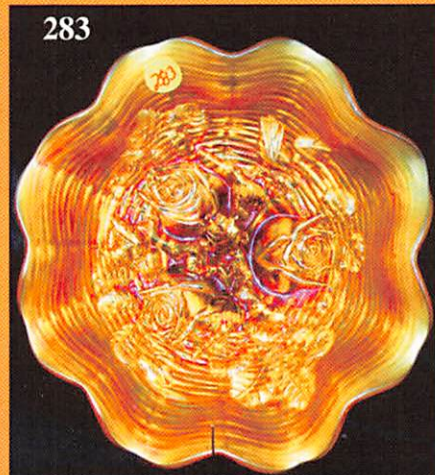
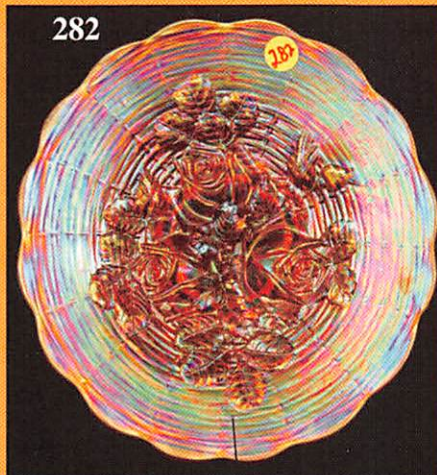
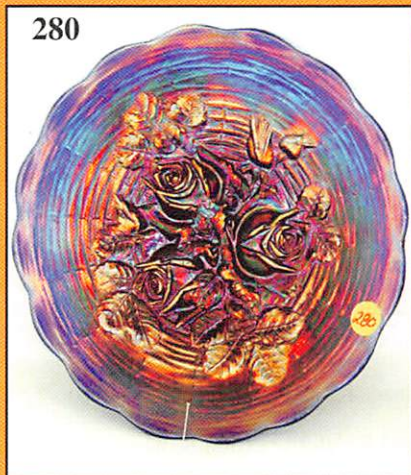
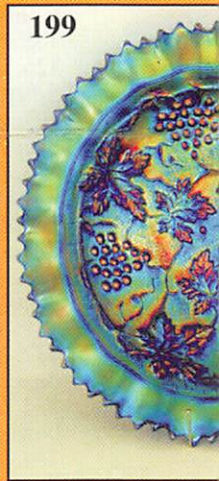
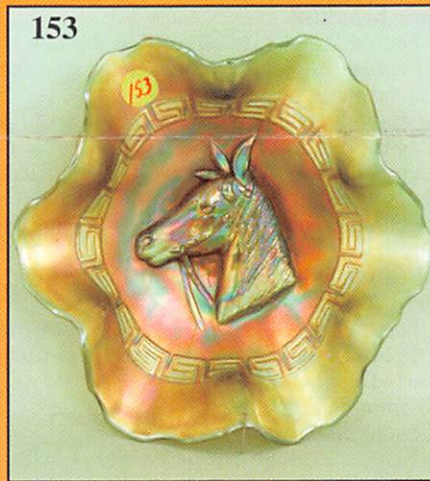
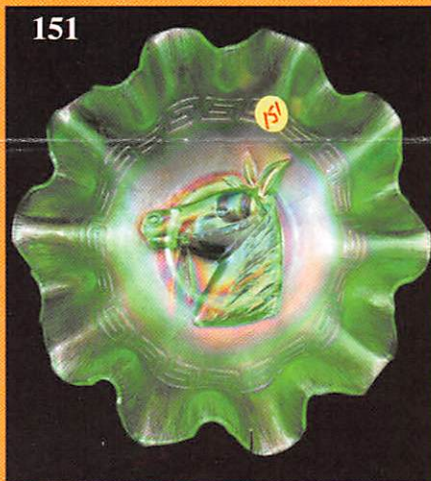
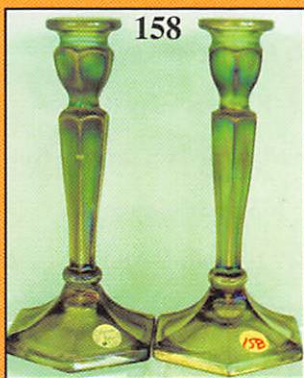
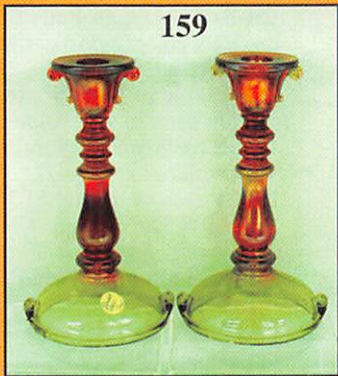
Saturday August 8th,

FRIDAY PREVIEW: August 7th. 12:00

WEB SITE: WWW

Held at The Mickey Reichel Auction
1440 Ashley Road •

Beautiful affordable
Emma Foster Collection of IL. and M.



WINTER GARNET GLASS

2009 - 9:00 AM Sharp

10 Noon - 5:00 PM & 7:30 AM Auction Day

WWW.AWK-SHN.COM

at the Auction Gallery and Real Estate Center
Boonville, Missouri

Available items from :
Mr. & Mrs. Stewart Mills of Missouri



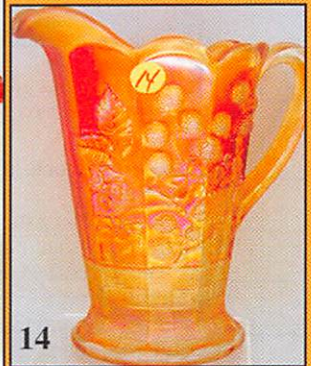
20



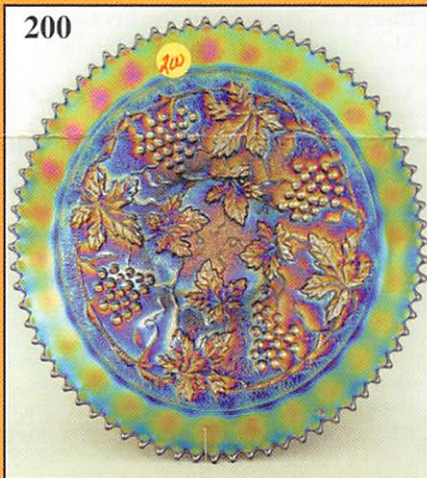
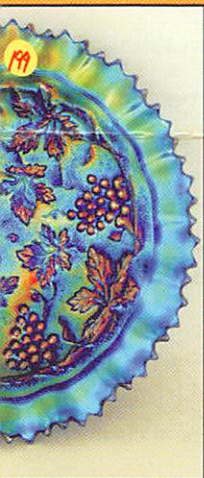
229



228



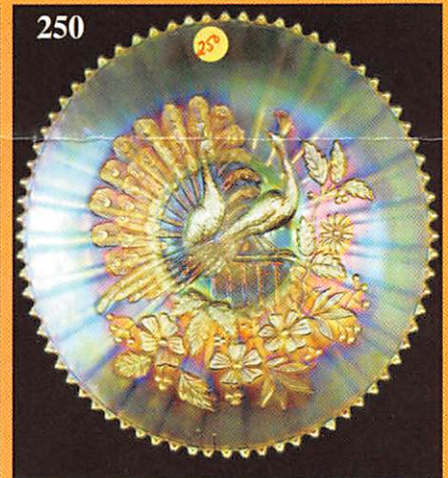
14



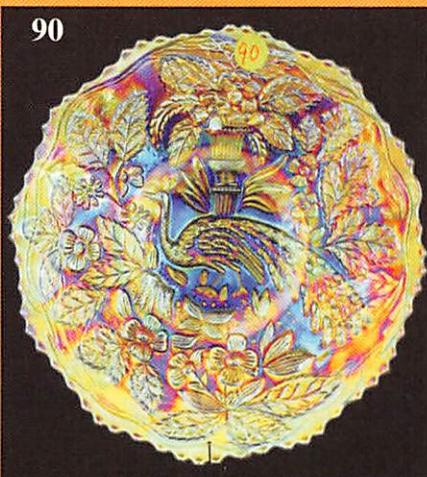
200



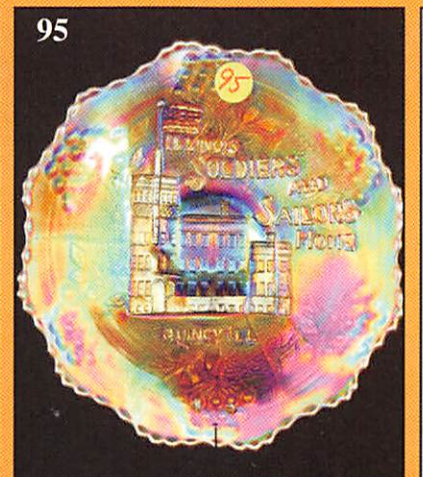
25



250



90



95



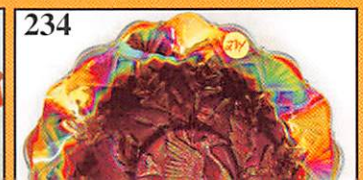
96



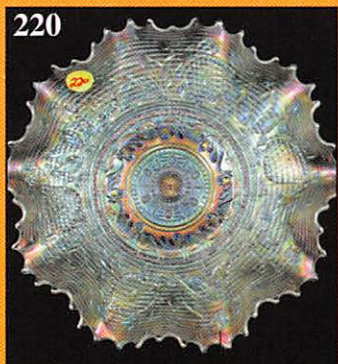
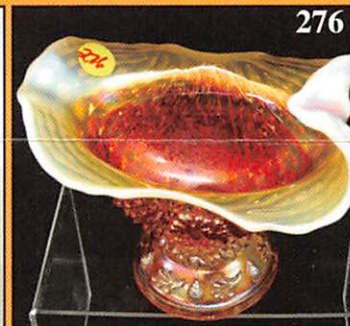
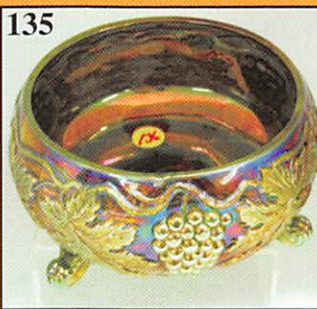
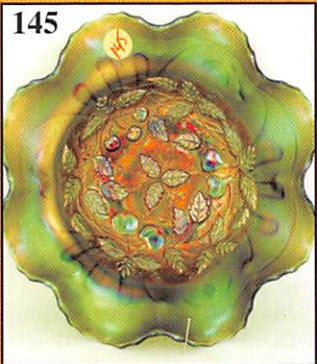
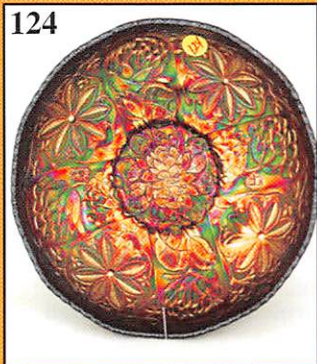
196



265-266



234



NO BUYERS

Make Reservations EARLY

Days Inn: 660-882-8624 • Comfort Inn: 660-882-5317

ABSENTEE B

PLEASE NOTE: There is a \$6 handling charge for each successful bid which will be added to packing. Your write-in bid will be entered just as if you are present and bidding. **Successful bid number).** Direct mail bids to Auctioneer **Mickey Reichel, 18350 Hunters Ridge Ct., Boonville, MO** References. Announcements made day of the auction supercede all printed material. Not Responsible

Call for additional information: 660-882-5292

FAX: 660-882-5292 (evening hours)

E-mail: mreichel@AWK-SHN.com

Held Inside the Mickey

1 Mile North of I-70 on Hwy. 5, Exit 101, Boonville, MO



TERMS: Cash or Good Check,

4% Clerking Fee on all purchases except for p

***** No return on any items once they leave**




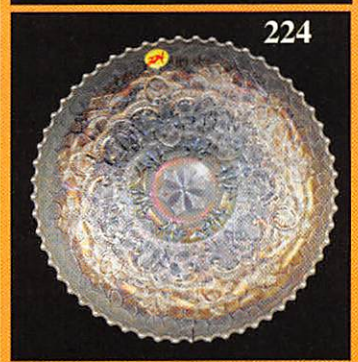
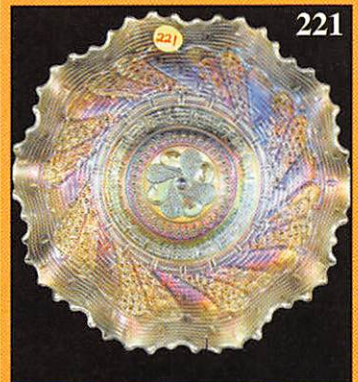
PREMIUM ★★ ★
at one of these local motels:

• Super 8: 660-882-2900 • Holiday Inn: 660-882-6882

BID POLICY:
 to the selling price for all write-in bids. This is in addition to the cost of postage, insurance and
 orders will be notified in 1 to 3 days by the auctioneer (so be sure to include your phone
 MO 65233-2971. Terms: Cash or Check accepted with proper I.D. and Social Security Number and
 able for Accidents or Sold Items. **Call in Bids before Auction Welcome!**
 days or 660-882-5283 evenings before 9:00 p.m.

(start FAX transmission after beep)
 Web Site: www.awk-shn.com

Reichel Auction Center
 Missouri • 20 Miles West of Columbia, MO on I-70
 VISA and MasterCard accepted. 
 Payment of cash or check. Proper I.D. required.
at the Auction Center (No Exceptions) * * *



SEE REVERSE FOR DETAILS