

1. Pumpkin M-N Grape and Cable stippled tumbler
2. **P-N Grape and Cable stippled tumbler--Multi electric**
3. G-N Dandelion tumbler--Colorful
4. **P-N Dandelion tumbler--Above average**
5. Lavender-N Dandelion tumbler--Unusual shade of glass and pretty
6. **P-Dugan Heavy Iris tumbler**
7. P-N Greek Key tumbler--Eye catching color
8. **P-Imp 474 tumbler--Scarce color**
9. B-Dugan Peacock at Fountain tumbler
10. **Dark M-Imp File tumbler**
11. P-Imp Lustre Rose tumbler--Rib interior
12. **P-Imp Lustre Rose pitcher--Tough piece, interesting contrast of iridescence on either side**
13. G-N Singing Birds 5 pc. water set--Desirable pattern, well-matched set
14. **Dark M-N Grape and Cable water pitcher--Color top to bottom**
15. Beautiful M-N Peacock at Fountain 5 pc water set--Super pastel set
16. **Elec P-Diamond Optic 7 pc water set, Fenton for Levay--RARE, only 75 sets made**
17. Cobalt B-N Cherries and Little Flowers enamel decorated tumbler--Signed N
18. **Blue Opal-Dugan S-Repeat tumbler, non-iridized**
19. Rare White Opal-Dugan Palisades (Lined Lattice) 4 1/2" whimsied tri-corner vase. First I've seen!
20. **Lt P-Imp Ripple 8 1/2" vase, 3 3/8" base, 5 1/2" opening. Lavender iridescent treatment, sweet!**
21. W-Imp Smooth Panels 8 1/4" vase, with 6" opening. Frosty and nice!
22. **M-Dugan Mary Ann two-handled vase**
23. G-Imp Lead Lustre #619/5) 8 1/2" cylinder vase. Marigold interior, yellow and green irid. Scarce!
24. **Ice G-N Corn vase w/ stalk base--Collector favorite!**
25. Superb AO-N Daisy and Drape flared vase. Top notch pastels
26. **Pastel M-Fenton Fine Rib Footed ruffled vase--Beautiful**
27. P-Imp Scroll Embossed small (actually, the middle size) ruffled compote--Multi electric
28. **MMG-Westmoreland Pearly Dots ruffled compote--Hard to find in this color**
29. P-N Harvest Poppy ruffled compote--Very Scarce and nice
30. **G-N Smooth Rays ruffled compote--Another very unusual item and nice!**
31. Scarce Lav-Fenton Holly ruffled compote--Tough color
32. **B-Fenton Scotch Thistle 3 in 1 ruffled edge compote**
33. PO-Dugan Starfish stemmed bonbon--Loaded with opal, not often seen
34. **G-Fenton Blackberry Bramble ruffled compote, flattened out to 6 1/2" across**
35. Awesome M-Brockwitz Curved Star large flower bowl with fitted metal grill--Wow!
36. **Super M-Diamond Pinwheel 10 1/2" ruffled bowl--Scarce and oh so nice**
37. Pastel AO-N Hearts and Flowers compote--Fabulous example
38. **Pearlized Milkglass-Phoenix 8" Lacy Dewdrop salver--Scarce**
39. W-Dugan Puzzle stemmed bonbon w/ Floral and Wheat exterior--Lots of pastels
40. **Scarce Ice B-N Peacock at Fountain ruffled compote--A winner!**
41. Scarce BA-N Peacock at Fountain ruffled compote--Electric blues, purples, golds
42. **Elec B-N Fruits and Flowers stemmed bonbon**
43. M-Imp Hobstar Flower ruffled compote
44. **PO-Dugan 6 1/2" Persian Garden plate--Basketweave exterior, scarce**
45. BA-Dugan Wishbone and Spades 6 3/4" plate--Electric pastel finish
46. **W-Dugan Grapevine Lattice 7" plate--Delicious pastel hues**
47. P-Dugan Grapevine Lattice 7 1/4" plate--Great electric irid.
48. **W-Dugan Fishscale and Beads 7" plate--Very pretty**
49. **Rich M-Fenton Lions 7 3/4" plate--Great strike and impressive color**
50. **W-Fenton Cherry Chain 6 1/2" plate--Desirable little dandy**
51. Dark Lime G-Imp Grape 6 1/2" plate--Odd color
52. **M-Fenton Vintage Grape 6" tri-corner plate, leaf center**
53. M-Fenton Persian Medallion 6" plate w/ four sides pulled up--Uncommon shape
54. **Red-Fenton Acorn 6 1/4" round nut bowl**
55. W-Dugan Double Stem Rose pedestal footed 9" plate--Vibrant pastels
56. **Deep P-N Three Fruits Medallion 8 3/4" spat ftd, ruffled bowl--Electric hues**
57. M-Three Fruits Medallion 8 3/4" spat ftd, ruffled bowl--Very nice looking
58. **M-Fenton Wild Blackberry 9" ruffled bowl--Loaded with pinks, smooth edge, scarce pattern**
59. P-N Singing Birds mug--advertising "Compliments of Hotel Vendome"--Most unusual
60. **Outstanding B-Fenton Leaf Chain 9 1/2" plate--Electric, stretchy, what a great plate!**
61. B-Fenton Orange Tree hatpin holder
62. **B-Fenton Orange Tree powder jar, normal minor rim flaws, but incredible color!**
63. P-Grape and Cable powder jar w/ lid--Couple little nicks on rim
64. **Amazing Pastel AO-N Three Fruits 9" stippled plate--One of the premier pieces in this sale!**
65. HONEY AMBER-N Three Fruits 9" stippled plate--Rare, Rare, Rare color! Top shelf item!
66. **P-N Three Fruits 9" stippled plate w/ electric blue irid--Light rub on fruit, so what?**
67. Electric B-Fenton 9 1/2", 3 in 1 edge bowl. The search for the best stops right here!
68. **Exceptional M-Fenton Little Fishes 9 3/4", ruffled, ball footed bowl--Scarce and wonderful**
69. M-Fenton Little Fishes 5 1/2", ruffled, ball footed bowl--Little brother!
70. **G-Fenton Coral 8" ICS bowl--Talk about a scarce shape to find, this is it!**
71. G-Fenton Stag and Holly 8", ICS, spat ftd bowl--Not so common color
72. **Rich M-N Peacocks ruffled bowl--Hot pinks galore!--Tip chip**
73. **Emerald Green--N Peacocks Ruffled bowl--THIS ONE IS A SHOW STOPPER!**
74. **Ice G-N Peacocks ruffled bowl--Dripping w/ pastel iridescence, another that will BLAST you with color**
75. W-Fenton Open Edge Basketweave 9" ruffled bowl with Three Rows!--Hard to find
76. **W-U.S. Glass Cosmos and Cane 8" deep round master berry bowl--Great pastels**
77. W-U.S. Glass Cosmos and Cane 4 1/2" round bowl--Also nice
78. **M-Field Thistle Stemmed 7" tall compote, 7 1/2" opening--Scarce pattern**
79. M-Inverted Thumbprint high shouldered 12" vase--Unknown age or maker
80. **G-Blown glass 14 3/4" 2 hdl. vase--Contemporary?**
81. M-Fenton Peacock and Grape 9 1/2" plate--Radium finish, desirable piece
82. **Pastel PO-Fenton Dragon and Lotus 8", ruffled, spat ftd bowl**
83. G-N Strawberry PCE bowl, Smooth exterior--Bouquet of electric colors
84. **Scarce P-N Grape and Cable Vt. 8 3/4", stippled, ruffled bowl**
85. Jade Blue Stretch-N 8 1/2" ICS stemmed compote
86. **B-Fenton Holly 9 1/4", 3 in 1 edge bowl**
87. B-Fenton Dragon and Lotus 8 1/2" ICS bowl--Spotty irid.
88. **M-Stork ABC child's plate or feeding dish**
89. M-N Grape and Cable w/ Thumbprint round berry bowls--4 x \$
90. **B-Fenton Orange Tree ftd berry bowls (six total, two damaged) so--4 x \$**
91. M-Dugan Grapevine Lattice 7" plate--Usually these are white, kinda scarce
92. **P-Fenton Peacock and Grape 7 3/4", ruffled, spat ftd bowl**
93. Russet-N Four Pillars 10 1/2" vase--Good feet and real good color
94. **M-N Fine Rib 9" vase**
95. Pastel M-Imp Smooth Panels 10" vase--Pretty pastels
96. **Vaseline-Australian Lily Funeral vase, 10 1/4" tall, 4 3/4" base, 5 3/4" top--Ultra scarce, not iridized**
97. G-Fenton Captive Rose 8" ICS bowl--Scintillating color
98. **G-Fenton Captive Rose 8 1/2", 2 in 1 edge bowl--Yellows, reds and greens deluxe**

99. M-Fenton Orange Tree 8 3/4", six ruffle bowl with Trunk Center--A beaut!
100. P-N Town Pump vase--Pristine condition and well above average
101. M-Imp Smooth Panels 7" vase--plenty of pastel colors
102. Exquisite Pastel M-Dugan Big Basketweave 11" vase, 9 1/4" front height--Find one better!
103. Lavender-Imp Parlor Panels 12" vase, 6" opening--Quite nice
104. Smoke-Imp Mini Morning Glory 5" vase--Better example, loaded with color
105. M-Thistle (by Caning Town Works) 6" vase
106. Powder B-Fenton Orange Tree wine glass
107. Pumpkin M-Kulor 5 7/8" vase--Radium
108. Electric P-Imp Thumbprint and Oval 5 1/2" vase--Super
109. P-Dugan Twigs 4" vase with tri-corner type--Scarce and lovely
110. P-Imp Colonial Lady 5 3/4" vase--Electric purple, yellow, green and blue
111. B-Singleton Bailey Hobnail 17 3/4" swung vase--Limited production and electric
112. Cranberry Opal-Singleton Bailey 14 1/4", JIP vase
113. Blue Topaz Opal-Singleton Bailey 12 1/2" Poppy Show vase
114. Deep B-Singleton Bailey 12 1/2" Heavy Iris vase w/ CRE top--Stunning
115. Vas Opal-Singleton Bailey 12" ruffled Poppy Show vase--Satin exterior, interior iridescence--Glows wildly
116. Pastel M-N Peacock at Fountain covered butter dish. Perfect rims, fantastic color
117. Pumpkin M-N Peacock at Fountain covered sugar. Problem free rims, dark and delightful
118. Pastel M-N Peacock at Fountain spooner--Pinks and blues galore
119. Pastel M-N Peacock at Fountain creamer--Pinks and yellows
120. Deep M-N round Bushel Basket--Above average example
121. Extra Pretty M-N Fine Cut and Roses ruffled bowl w/ Fancy exterior. Foot chip, but top notch color!
122. Scarce W-N Leaf and Beads rosebowl--Not often seen
123. P-Mlbg Hanging Cherries 7 1/4" ICS bowl--Super blue center
124. G-Mlbg Blackberry Wreath 8 3/4", 3 in 1 edge bowl--Excellent satin coloration
125. Splendid P-Mlbg Zig Zag 9 3/8" ICS bowl--Chip on base, but this one is hard to beat for color
126. A-Mlbg Blackberry Wreath 7 1/4", 3 in 1 crimped edge bowl--Spot of peeling on rim
127. Rad P-Mlbg Grape Wreath Vt. 8", 3 in 1 crimped edge bowl, Star center--Radium gem!
128. G-Mlbg Nesting Swan 9 3/4", six ruffle bowl--Lovely satin finish
129. Radium P-Mlbg Nesting Swan 9 1/2" ruffled bowl--Prize example!
130. Radium A-Mlbg Holly Sprig true spade shape nappy--Nice
131. Radium G-Mlbg Grape Wreath Vt. 7", ruffled bowl, w/ Feathered Leaf center--Just as nice as they come
132. M-Dugan Butterfly and Tulip large, square bowl--Rare 2 sides up rim treatment, take a look!
133. Electric P-Imp Scroll Embossed 7 1/2" ruffled bowl, File exterior--Super front and back!
134. M-Imp Scroll Embossed 9 1/4" ruffled bowl, File exterior--Awesome radium electric interior
135. Pastel M-Imp Grape 10" round, flared bowl--Shimmering pastel iridescence to die for!
136. Scarce M-Field Thistle 9" deep, round bowl--Tough, tough pattern to find
137. M-Imp Hattie 8 3/4", round, flared bowl--Pink highlights
138. M-Imp Diamond Ring rosebowl--Nice and dark
139. P-Imp Pansy 9", eight ruffle bowl--Boy does this one have good color inside!
140. M-Fenton Thistle banana boat--Lots of pinks
141. Cobalt B-Fenton Thistle banana boat--Vivid colors inside and out, a winner!
142. Very Scarce A-Fenton Thistle banana boat--Very appealing mix of colors
143. Very Scarce G-Fenton Thistle banana boat--This iridescence will speak to you!
144. M-Fenton 10" Grape and Cable/ Persian Medallion orange bowl--Loaded with pinks, yellows and greens
145. Elec P-Imp Grape 11", ruffled bowl--Big, bold and beautiful
146. Smoke-Imp Windmill milk pitcher--You don't see these every day
147. P-Dugan Six Petals 8" crimped edge bowl--Electric border
148. Honey Amber-U.S. Glass Cosmos and Cane 4 1/4" berry bowls--2 x \$
149. Celeste B-Fenton Holly 9", eight ruffle bowl--A "10" for color and one of just a couple known. DO NOT let this one get away!
150. Pastel Aqua w/ Opal Tips-N Nippon PCE bowl--DYNAMITE! Another great rarity, this is the one you've been waiting for!
151. M-Lucky Bank (barrel shape)
152. M-Be Wise owl bank, extra nice color
153. M-Sowerby Hen on Nest covered dish
154. Fire King MMG-Tom and Jerry eggnog set, bowl with eight mugs. A great novelty carnival set!
155. W-Dugan Persian Garden 6" ICS bowl--Pastels galore
156. M-Fenton Stippled Rays 7" ruffled bowl
157. Great M-N Grape and Gothic Arches spooner
158. Rare W-Fenton Blackberry Banded 5 3/4" ruffled hat
159. Pastel M-Dugan Circle Scroll JIP hat whimsied from a tumbler--Delightful color
160. Radium P-Mlbg Grape Wreath Vt. 8" ICS bowl, with Star center--They don't come any nicer
161. P-Mlbg Hanging Cherries 10" ICS bowl--Always in demand AND DOWN THE STRETCH THEY COME.....A GREAT RUN OF "HORSES"
162. Super Yellow Vaseline-Fenton Horse Medallion ball ftd nut bowl--Wonderful marigold overlay, this is the one!
163. Pumpkin M-Fenton Horse Medallion ball ftd nut bowl
164. Scarce Amber-Fenton Horse Medallion ball ftd nut bowl--Outstanding iridescence
165. Rich M-Fenton Horse Medallion 8", ball ftd, ruffled bowl--A stallion!
166. M-Fenton Horse Medallion 7" round, scalloped, ball ftd bowl--Superb detail
167. Deep M-Fenton Horse Medallion ball ftd rosebowl--Well above average for color
168. M-Fenton Horse Medallion 6 3/4", collar base, round, flared bowl--This one's in the winners circle!
169. Ice G-N Fruits and Flowers 10" radium bowl, BW exterior--Alluring pastel hues
170. Dark Ice B Opal-N Good Luck ruffled bowl, Rib exterior--Overwhelming opal, must see the fantastic color to appreciate it, or better yet, JUST BUY IT!!
171. Super M-N Good Luck ruffled bowl, Rib exterior--Lavish pink hues, oh my!
172. M-Fenton Two Flowers 8 3/4", ruffled bowl and a very scarce collar base
173. P-Imp Hattie 9" ruffled bowl--Quite scarce and pretty
174. P-Imp Scroll Embossed 9 1/2" flat plate--Shows greens and pinks and the iridescent treatment is quite different
175. M-Fenton Holly 8 1/2" CRE bowl--Neat shape
176. Cobalt B-Fenton Coin Dot 7 1/2" ICS bowl--Nice one
177. M-N Grape and Cable PCE bowl, BW exterior
178. G-N Grape and Cable Vt. 9 1/4" plate, BW exterior--Blue Ribbon iridescence
179. M-Fenton Acorn 7 1/2" ruffled bowl
180. Dark M-N Grape and Cable 7 pc water set, excellent matched set, near pumpkin!
181. M-Fenton Orange Tree Orchard water pitcher--A beauty, but has long crack where handle was applied
182. M-Fenton Orange Tree Orchard tumblers, dark and nice--2 x \$
183. M-Fenton Orange Tree Orchard tumblers--2 x \$
184. Light M-Fenton Orange Tree Orchard tumbler
185. M-Floral and Grape tumbler
186. M-Imp Windmill tumbler
187. M-Imp Lustre Rose tumbler--signed IG
188. M-Orange Tree standard mug
189. M-Grapevine Lattice tumbler
190. M-Fenton Vintage Grape fernery--Radium and very nice
191. B-Woodland 2000 small rosebowl--Club souvenir from convention

- _____ 192. A-Iridized art glass 5" vase--Rolled ring appearance
- _____ 193. Red-2001 Woodsland whimsied handgrip, CRE plate--Unique club souvenir from convention
- _____ 194A. AO-1996 SCCGS/SDCCGCC Heavy Grape whimsied handled basket--Another great convention whimsey!
- _____ 194. B-Fenton Stag and Holly 10 1/2", ICS, ball ftd bowl--A collector favorite
- _____ 195. Superb M-Fenton Stag and Holly 11" square eight ruffle, ball ftd bowl--Dynamite color
- _____ 196. M-Fenton Chrysanthemum/Windmill 10 1/2", ruffled, ball ftd bowl--Great color
- _____ 197. B-Fenton Dragon and Lotus 8 1/2" ICS collar base bowl--Excellent iridescence, way above average
- _____ 198. Beautiful M-Fenton Dragon and Lotus 8 3/4", eight ruffle bowl
- _____ 199. Elec B-Fenton Ribbon Tie 9", 3 in 1 edge low ruffled plate--Eye Candy!!
- _____ 200. Breathtaking M-Fenton Peacock at Urn 9 1/4" plate--Indescribably Delicious
- _____ 201. Scarce A-Fenton Pine Cone 6 1/4" plate--A very desirable and lovely piece
- _____ 202. Royal B-Fenton Holly 8 1/4" ICS bowl--Scarce shape, awesome color

- _____ 203. Superb B-Dugan Apple Blossom Twigs 8 1/4" plate--Better than most that you see
- _____ 204. B-Fenton Lotus and Poinsettia 5 3/4", ruffled, ftd bowl
- _____ 205. Sapphire-Fenton Lotus and Poinsettia 6", ruffled, ftd bowl--Very scarce color
- _____ 206. Sapphire-Fenton Little Fishes 6", ruffled, ftd bowl--Extremely scarce color for this bowl
- _____ 207. Pastel M-Grape and Cable perfume bottle--Fantastic hues, bottle and stopper are a great match
- _____ 208. Electric P-Grape and Cable perfume bottle--Amazing color
- _____ 209. G-Cambridge Buzz Saw small cruet w/ stopper--One of the best you will ever see!
- _____ 210. G-Imp Flute toothpick--Always desirable
- _____ 211. Rich M-Robin mug, old and good
- _____ 212. P-Banded Hat violet basket (not a handled basket, as you know)
- _____ 213. M-Louisa miniature banana boat--Little sweetie
- _____ 214. M-Fenton Daisy Cut bell--Desirable novelty piece
- _____ 215. Electric B-N Singing Birds mug
- _____ 216. M-N Singing Birds stippled mug--Lovely
- _____ 217. P-Westmoreland Strutting Peacocks creamer and sugar w/ lids--An underrated rarity that never gets the attention it deserves
- _____ 218. Jade Blue stretch-N #657 candlesticks, 7" tall, pair--Blush of purple irid.

SPECIAL NOTE:

NO SUNDAY CALLS, PLEASE!

Winning Absentee Bidders will be contacted Monday through Wednesday of the week following the Auction!

Thank You!

SEND ALL MAIL TO:

18350 Hunters Ridge Ct.

Boonville, MO 65233

WATCH:  **Web Site: www.AWK-SHN.com**

219. Yellow Vaseline-U.S. Glass #315 candlesticks, 9 1/2" tall, pair--Beauties
220. **Harding Blue w/ white enamel strip--Dugan Mae West 9" candlesticks, pair--These are nice!**
221. W-Fenton Cornucopia candlestick vase
222. **Russet stretch-N #675 chamber candlestick**
223. M stretch-Dugan 8" candlesticks, pair--Plate 63 in stretch book
224. **BA-Dugan Egyptian Lustre 8" candlesticks, pair--Tiffany style iridescence, wow!**
225. Rare Imperial Freehand 10 3/4" candlesticks, pair--Marked with original paper label on base. Remarkable!
226. **Imperial Freehand 7 1/2" bulbous, footed vase--Also scarce**
227. M-N Grape and Cable nappy whimsied from punch cup
228. **Super M-N Poppy pickle dish--Pastels and more pastels**
229. **AO-N Embroidered Mums 8 3/4" ruffled bowl--Gorgeous rarity that is at the head of its class. Opportunity is knocking!!!**
230. **Lime G-N Embroidered Mums 9" plate--Loaded with stretch blue iridescence, just unbelievable!!**
231. P-N Embroidered Mums 8 3/4" ruffled bowl--Blue and gold highlights
232. **PO-Dugan Petal and Fan 5 1/2", EIGHT ruffle bowls, both are beautiful--2 x \$**
233. G-N Grape and Cable Vt. 7 1/2" ruffled bowl, Leaf Center--Very attractive
234. **B-N Poppy pickle dish--Collector favorite**
235. G-Fenton Vintage 9 7/8" bowl with scarce 3 in 1 edge. Beautiful!!
236. **A-Fenton Autumn Acorns 7 3/4" CRE bowl--Neat shape**
237. B-Fenton Blackberry Miniature compote
238. **Great M-Fenton Coin Dot 9", 3 in 1 edge bowl--Unusual shape and pretty!**
239. Radium G-N Leaf and Beads 6 3/4" flared bowl--Super blues and pinks on the inside
240. **M-Fenton Orange Tree 9" square eight ruffle bowl--Quite nice**
241. Blue-Nugget 4 1/4" pitcher w/ amber handle and blown pontil mark
242. **W-Iridized Austrian (?) art glass 3" vase, melon swirl type pattern, polished pontil--Lots of pastel color**
243. M-Imp Open Rose 8" deep, round bowl--Looks so much like amber
244. **M-Fenton Pond Lily 4 sides up bonbon**
245. W stretch-10" Giant compote/fruit bowl--Pastel pinks and greens
246. **Fantastic M stretch-Plate, 9", absolutely unreal color**
247. Smoke stretch-10" Underplate, also lovely
248. **Sapphire stretch 9" plates, beautiful onionskin effect--4 x \$**
249. Celeste blue stretch 9" plates, great pastel colors--4 x \$
250. **M- Cut back Diamond and Fan 12 1/2" decanter--Great novelty**
251. M-Banded Diamond decanter w/ stopper
252. **M-Jacobean 5 3/4" colognes--2 x \$**
253. M-Jacobean 5 1/4" colognes--2 x \$
254. **M-Jacobean dresser pieces--4 x \$**
255. BA-Big Butterfly hatpin
256. **BA-Big Butterfly hatpin**
257. P-Mlbg Peacock at Urn 9 3/4" ICS bowl--Pretty center
258. **M-N Peacock at Urn master IC bowl w/ full stippling--Scarce beauty**
259. G-N Peacock at Urn 5 1/2" ICS bowl--Scarce and attractive
260. **Pastel M-N Strawberry stippled PCE bowl, Rib exterior--Lots of blues and pinks**
261. P-N Strawberry ruffled bowl, plain exterior--Electric all the way
262. **M-N Strawberry ruffled bowl, plain exterior--soft pastel hues**
263. Pumpkin M-N Strawberry 9" plate, BW exterior
264. **M-N Strawberry ruffled bowl, BW exterior--Pretty**
265. Rich M-N Three Fruits 9" plate, BW exterior--Good color
266. **Super M-N Drapery 6" tri-corner candy dish--Lots of pinks**
267. Wonderful M-Fenton Leaf Chain 9" plate--Outstanding pastel finish
268. **A-N Sunflower ruffled, spat ftd bowl--Coppers, golds and blues**
269. **Soft Ice B-N Peacocks 9" plate, Rib exterior--Covered with color, baby!**
270. **W-N Peacocks 9 3/8" plate, Rib exterior--All purples and blues**
271. M-Rib and Panel 4 1/2" low, wide vase--Different shape
272. **Frosty W-N Daisy and Drapery vase w/ cupped in top**
273. P-Imp Scroll Embossed ruffled miniature compote--Super little rarity
274. **G-N Wild Rose 7 1/4" ftd, flared bowl--Fabulous iridescent hues**
275. A-Dugan Cosmos Vt. 10" ruffled bowl--Scarce color and nice
276. **B-Fenton Orange Tree 9 1/2" plate--Electric fuschia iridescence, breathtaking!**
- 277A. M-Imp Grape 9" ruffled bowl
277. M-Imp Pansy pickle dish
278. **M-Rolled rim 4 1/2" novelty vase whimsied from tumbler**
279. M-Fenton Holly ruffled compote
280. **G-Fenton Stippled Rays 5 1/2" ruffled bowl**
281. M-Imp Grape wine--Light color
282. **B-Enameled Cherries tumbler**
283. Cranberry-Art glass 2 3/4" toothpick holder--Iridized
284. **G-N Enameled Chrysanthemum tumblers, non iridized--5 x \$**
285. Lav-Mlbg Trout and Fly 9", 3 in 1 edge bowl--Stunning color and a scarce color, too!
286. **G-Mlbg Trout and Fly 8 3/4" 3 in 1 edge bowl--Lots of blues make this one a winner**
287. M-Mlbg Rays and Ribbons 9", ICS bowl--Awash with pastel colors
288. **P-N Fine Rib 10" vase--Multi electric**
289. Deep P-N Leaf Columns 10" vase--Vibrant electric colors
290. **A-Fenton Diamond and Rib 11" vase**
291. M-Imp Ripple 14" vase--Signed IG
292. **M-Imp Scroll and Flower Panels 9 1/2" vase, 7 1/2" opening--Signed IG**
293. M-Imp Octagon 6 1/4" vase--Signed IG
294. **Red-Contemporary 11 1/2" swung Hobstar vase**
295. M-Imp Grape salt and pepper--Signed IG
296. **B-Imp floral design footed rosebowl--Signed IG**
297. B-Imp diamond point design toothpick--Signed IG
298. **B-Imp hat toothpick--Signed IG**
299. Cobalt B-Westmoreland covered owl w/ glass eyes--Non iridized
300. **G-N Tree Trunk 12" mid-size vase, 6" opening--I'm going with electric green!**
301. Scarce G-N Tree Trunk 12 3/4", plunger base, mid size vase
302. **Scarce M-N Tree Trunk 12 3/4", plunger base, mid size vase--Nice pinks hues**
303. Scarce P-N Tree Trunk 12 1/2", plunger base, mid size vase--Pinks, blues and golds
304. **P-Imp Grape tumbler**
305. Pumpkin M-N Grape Arbor tumbler
306. **Scarce G-Fenton Fluffy Peacock tumbler**
307. Rich M-Fenton Fluffy Peacock tumbler
308. **Super M-Fenton Strawberry Scroll tumbler--Scarce and very nice**
309. Rare M-Cambridge Inverted Strawberry flared tumbler--Marked Near Cut
310. **Scary Electric P-N Grape and Cable banquet tumbler--How could it possibly be any prettier?**
311. **P-N Hearts and Flowers 9 1/4" plate--Electric blue iridescence**
312. **B-Fenton Heart and Vine 9 1/2" flat plate--Remarkable fuschia iridescence on the front**

Approximately 38 more carnival glass lots, good contemporary group to close out this auction

 **Call Today To Sell Your
Fine Items
660-882-5292 Day
660-882-5283 Evening**

TERRIFIC CARNIVAL

Saturday, June 13th, 2009

👉 FRIDAY PREVIEW: June 12th - 12:00

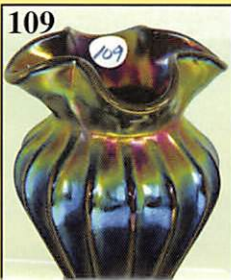
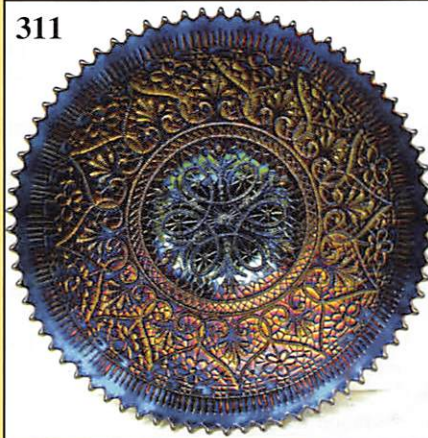
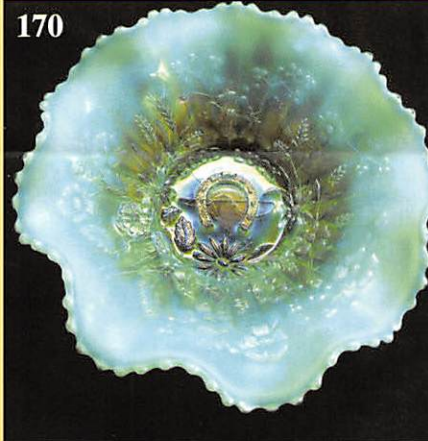
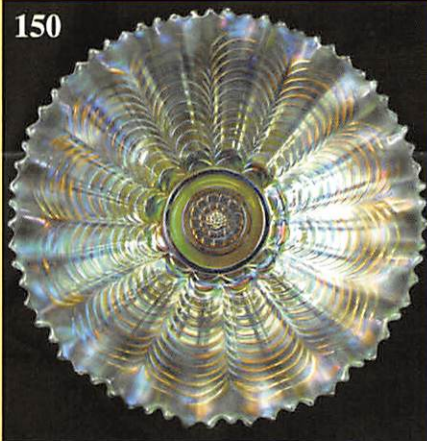
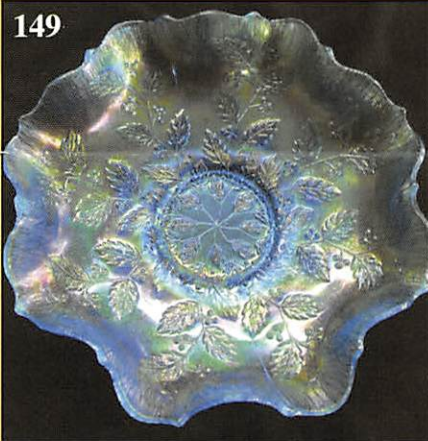
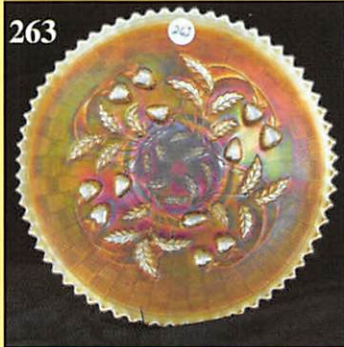
WEB SITE: WWW

Held at The Mickey Reichel Auction

From Out West: The J

1440 Ashley Road •

Please reply upon receiving this



AL GLASS AUCTION

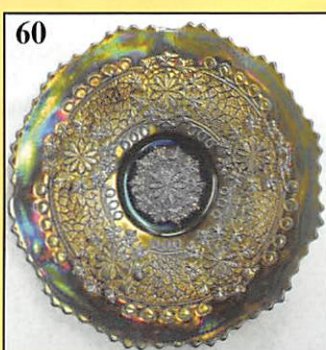
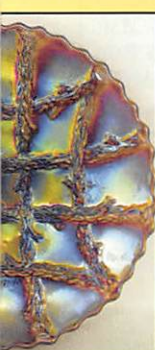
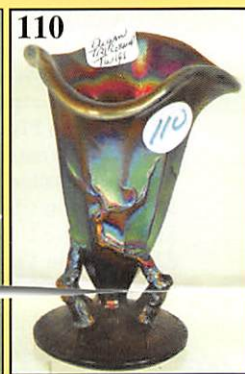
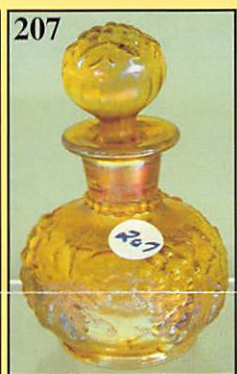
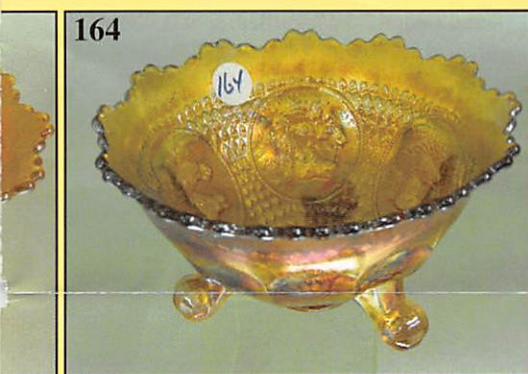
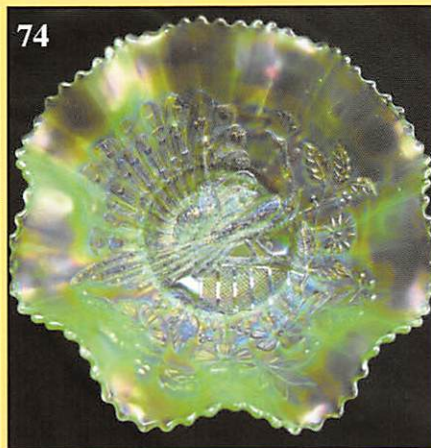
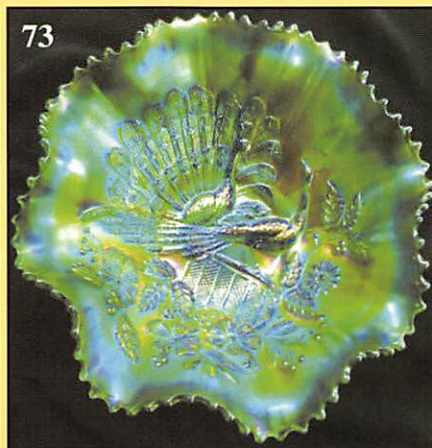
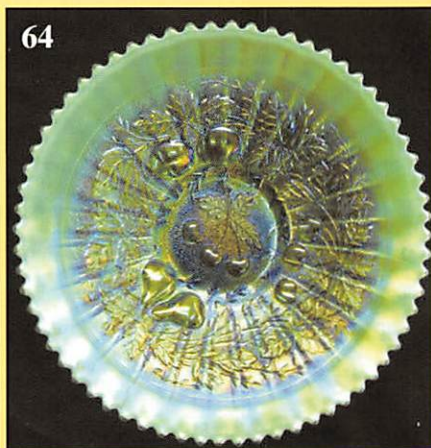
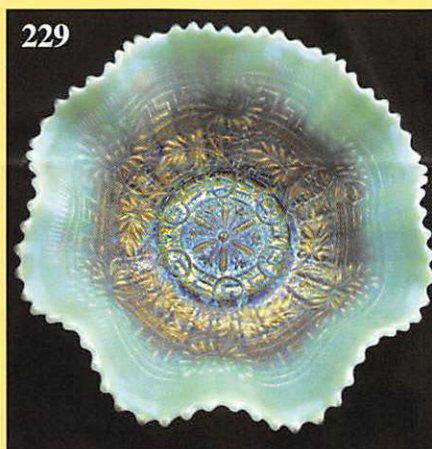
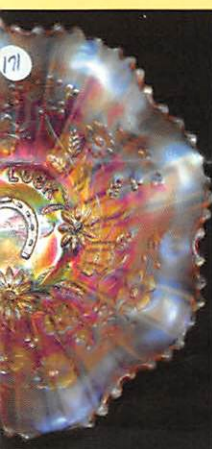
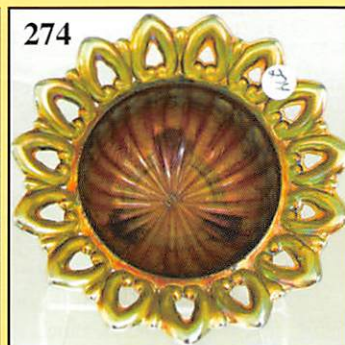
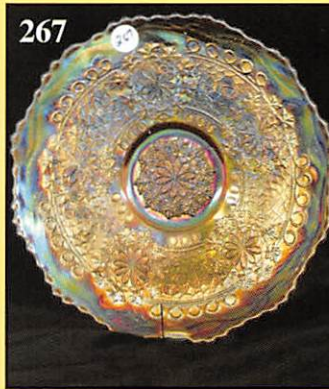
2009 - 9:00 a.m. Sharp
10:00 Noon - 5:00 pm & 7:30 a.m. Auction Day

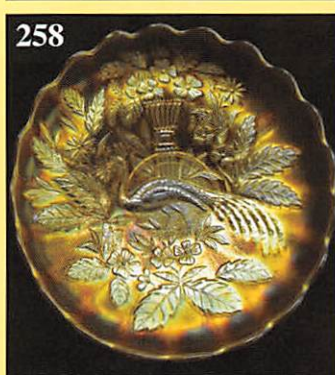
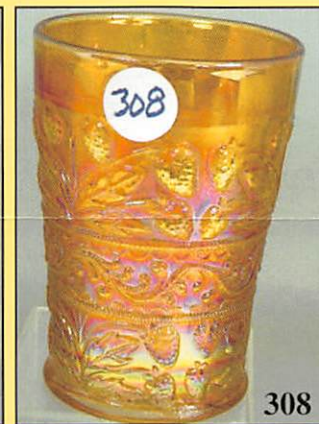
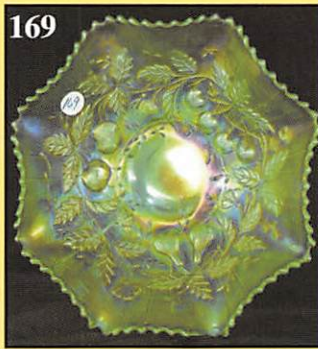
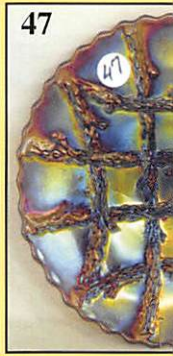
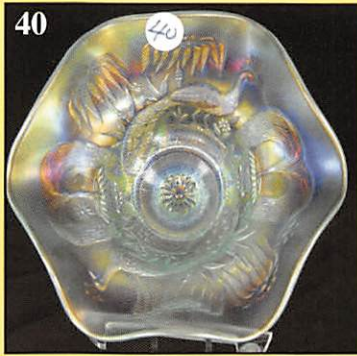
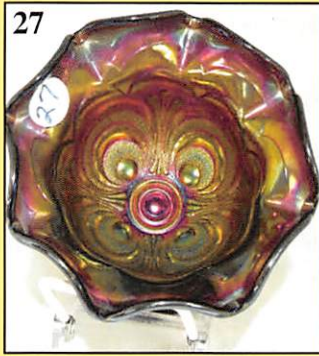
WWW.AWK-SHN.COM

ion Gallery and Real Estate Center
Jacob Marlin Collection

Boonville, Missouri

s ~ Respectfully, Mickey Reichel





NO BUYERS

Make Reservations EARLY

Days Inn: 660-882-8624 • Comfort Inn: 660-882-5317

ABSENTEE

PLEASE NOTE: There is a \$6 handling charge for each successful bid which will be added to packing. Your write-in bid will be entered just as if you are present and bidding. **Successful bid number**). Direct mail bids to Auctioneer **Mickey Reichel, 18350 Hunters Ridge Ct., Boonville, MO 64618**. References. Announcements made day of the auction supercede all printed material. Not Responsible for shipping.

Call for additional information: 660-882-5292

FAX: 660-882-5292 (evening hours)

E-mail: mreichel@AWK-SHN.com

Held Inside the Mickey

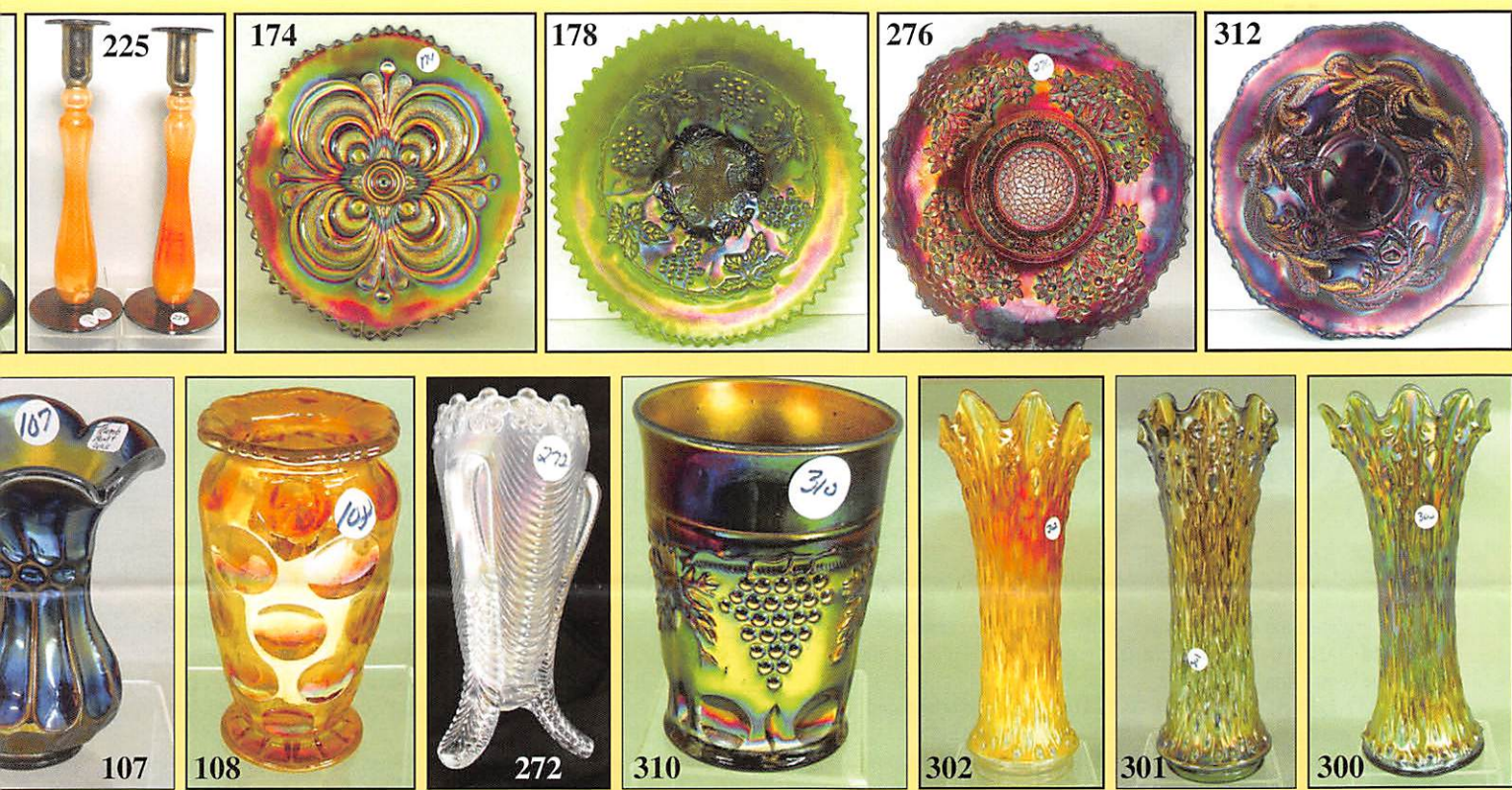
1 Mile North of I-70 on Hwy. 5, Exit 101, Boonville, MO



TERMS: Cash or Good Check,

4% Clerking Fee on all purchases except for p

***** No return on any items once they leave**



PREMIUM ★★★
 at one of these local motels:

• Super 8: 660-882-2900 • Holiday Inn: 660-882-6882

BID POLICY:

to the selling price for all write-in bids. This is in addition to the cost of postage, insurance and
 bidders will be notified in 1 to 3 days by the auctioneer (so be sure to include your phone
 MO 65233-2971. Terms: Cash or Check accepted with proper I.D. and Social Security Number and
 ble for Accidents or Sold Items. **Call in Bids before Auction Welcome!**
 days or 660-882-5283 evenings before 9:00 p.m.

(start FAX transmission after beep)

m Web Site: www.awk-shn.com

Reichel Auction Center

, Missouri • 20 Miles West of Columbia, MO on I-70

VISA and MasterCard accepted. 

ayment of cash or check. Proper I.D. required.

at the Auction Center (No Exceptions) * * *



SEE REVERSE FOR DETAILS