

1. W-Imp Lustre Rose Fernery bowl--Marked IG
2. **G-Imp Lustre Rose Centerpiece bowl**
3. M-Imp Lustre Rose Fernery bowl--Extra Nice
4. **Amber-Imp Lustre Rose Centerpiece bowl--Scarce**
5. Olive G-Imp Open Rose 5 3/4" ruffled bowl
- 5A. Aqua-Imp Grape 6 1/4" plate--Rare color
6. **Fantastic M-Imp Pansy pickle dish**
7. Super M-Imp Windmill pickle dish
8. **M-Imp Waffle Block 10" tall handled basket**
9. Radium Electric Clambroth-Imp Pansy pickle dish
10. **Scarce Amber-Imp Grape water pitcher**
11. M-Interior Panel (?) 4" rosebowl
12. **M-Imp Grape tumblers--2 x \$**
13. M-Jeanette Iris and Herringbone 9" vase
14. **Smoke-Imp Windmill water pitcher--Not often seen, loaded with color**
15. Radium M-Imp Smooth Rib ruffled compote--Outstanding color
16. **M-Imp 10 1/2" flared stretch glass bowl--Iron Cross Mark**
17. W-Imp 4 1/2" ribbed interior rosebowl--Iron Cross Mark
18. **Pearl Amethyst--Imp Jewels 7" square bowl--Iron Cross Mark**
19. M-Imp Morning Glory 7 1/4" bud vase
20. **M-Imp Double Scroll console bowl with interior swirl--Couldn't ask for a better one**
21. Clam-Imp Pillar Flute 6" footed vase
22. **Smoke-Imp Smooth Panels 10" vase--5 1/4" top opening**
23. M-Fenton Diamond and Rib 10 1/2" vase
24. **A-Fenton Diamond and Rib 10" vase--Nice example**
25. M-Fenton Fine Rib 12" vase
26. **P-Imp Freefold 11 3/4" vase--Electric deluxe**
27. M-Mlbg Swirled Hobnail 10 3/4" vase
28. **Scarce P-Dugan Pulled Loop 10 1/2" vase**
29. M-Jain 8 1/2" Elephant vase
30. **M-Rose Garden 9 1/2" cylinder vase--Extra nice**
31. M-Jain 9 3/4" Fish vase
32. **Dark M-Sunflower and Diamond 9 1/2" vase**
33. Blue Topaz-Singleton Bailey giant Poppy vase
34. **M-Prisms 6" vase**
35. Ruby frosted w/ Marigold flash-7" vase--Unusual!
36. **M-Kulor 8" vase**
37. M-Twelve ring 9" tall candlesticks--pair
38. **B-Brockwitz Cathedral Arches giant stemmed compote--Possibly one of a kind?!**
39. M-Novelty Checkerboard ashtray--Different
40. **M-Shalimar water pitcher--Very few out there**
41. M-Three Diamond tumble up--base only
42. **M-Mirror and Crossbars 5 1/4" tall drinking glass**
43. M-Diamond Studs (?) 4" tall tumbler
44. **M-Shazam 4 1/4" tumbler**
45. M-Stork and Rushes banded tumblers, light radium--6 x \$
46. **Clam-Imp fluted 10" bowl**
47. M-Old Forester whiskey decanter with box
48. **M-Peacock and Grape 9" spatula footed plate--Yellowish look**
49. P-Dugan Holly and Berry 8" ruffled bowl
50. **Rich M-Rising Comet 8 1/2" cylinder vase**
51. M-Golden Wedding pint bottles--2 x \$
52. **Superb M-N Peacocks plate--Loaded with pinks**
53. M-N Fruits and Flowers 9" plate--BW exterior
54. **P-N Strawberry 9" plate--Very colorful**
55. M-N Grape and Cable 6" ruffled bowl
56. **Ice B-N Nippon PCE bowl--Rib exterior, wonderful pastels**
57. Pastel M-N Peacocks ruffled bowl--Rib exterior
58. **G-Imp Flute toothpick--Scarce color**
59. B-N Good Luck PCE bowl--Lots of pretty iridescence
60. **Scarce A-Fenton Concord 9" plate--Always in demand**
61. Smoke-Imp Chesterfield 12" giant compote--Gorgeous carnival irid, NOT stretch
62. **W-Brocaded Acorns 11" giant compote--Fantastic color and scarce!**
63. Pearlized Custard-N Grape and Cable small punch bowl base--Who has the punch bowl?
64. **P-Mlbg Seacoast Pin Tray--Typical minor rim nicks like they all have, this one has good color**
65. Jade Blue-N stretch 6 1/2" rosebowl--Super color (Plate 509 in stretch glass book)
66. **Red-Imp Floral and Optic 8 3/4" round flared bowl--Super stretch color and good feet**
67. Electric Teal-Imp Floral and Optic 9" bowl--Awesome stretch iridescence
68. **Fabulous Red-Imp Wide Panel 9 1/2" round, flared bowl--Another winner!**
69. Rare G-Imp Columbia 5 3/8" vase--Nice one
70. **Pearl Green-Imp Lustre Rose Fernery--Multi-color gem, never seen this color!**
71. Super Smoke-Imp Acanthus 10" chop plate--Top shelf item
72. **Electric M-Imp Open Rose 9" plate--Find one better!**
73. AO-N Daisy and Drape flared vase--Great, great color
74. **Fluorescent Pastel M-Imp Grape wine decanter w/ stopper--Oh my!**
75. Electric P-N Grape and Cable master berry bowl
76. **PO-Dugan Stippled Petals 9", ten ruffle bowl--A beauty**
77. Elec P-Fenton Hearts and Flowers 10 1/2" ruffled bowl--Signed by Scott Fenton
78. **P-Mlbg Peacock at Urn 9 3/4" ICS bowl--Splendid satins**
79. G-Mlbg Blackberry Wreath 6" ruffled bowl--Radium and nice
80. **M-Mlbg Blackberry Wreath 6" ruffled bowl--Pink center**
81. P-Mlbg Holly Sprig spade shape nappy--Radium and pretty
82. **M-Mlbg Nesting Swan 9 1/2" ruffled bowl**
83. G-Mlbg Sunflower pin tray--Scarce, nice and always in demand
84. **P-Mlbg Sunflower pin tray--Also scarce and desirable**
85. Radium G-Mlbg Blackberry Wreath 10 1/4", 3 in 1 edge bowl--Unusual size and shape!
86. **Radium M-Mlbg Strawberry Wreath Vt. ruffled compote--No center dot**
87. P-Mlbg Strawberry Wreath ruffled compote--Awesome radium finish
88. **P-Mlbg Diamonds water pitcher**
89. M-Mlbg Hanging Cherries 9 1/2" round, flared bowl--Unusual shape and nice!
90. **W-Art glass 7 1/2" ruffled cuspidor--Polished pontil, palm tree type design, very appealing!**
91. M-Dugan Roundup 9 1/4", 3 in 1 high crimp bowl w/ mirrored radium finish
92. **Red-Stretch 6" two sides up hat--Polished pontil mark**
93. Amber-Imp 9" Open Rose plate--Pretty
94. **B-Fenton Persian Medallion 6" square plate, 4 sides up, very good color**
95. Elec G-N Grape and Cable 9" plate--BW exterior
96. **M-Fenton Persian Medallion 8" tight CRE bowl--Unusual rim treatment and nice!**
97. A-N Grape and Cable breakfast creamer
98. **P-N Grape and Cable breakfast sugar**
99. Fantastic M-N Three Fruits stippled 9" ruffled bowl
100. **Ultra Rare B-N Grape and Cable sweetmeat compote--Fantastic color to complement its rarity!**
101. P-N Grape and Cable sweetmeat compote--They don't get any better than this one
102. **Crystal-N Grape and Cable sweetmeat compote--Scarce item**

103. W-N Fine Cut and Roses candy dish--Fancy interior, fine pastels
104. **White Frosted carnival glass shades--All different, all very nice--3 x \$**
105. M-Signed Nuart carnival glass shade
106. **Lav-Imp Diamond and Sunburst wines, straight up sides--2 x \$**
107. M-Imp Hobstar Flower ruffled compote
108. **M-Imp Octagon wines--2 x \$**
109. Scarce G-Imp Grape goblet
110. **M-N Grape and Cable Vt. 8" 2-sides up plate--Leaf center, great pastels**
111. G-N Grape and Cable Vt. 8" 2 sides up plate--Leaf center, also nice
112. **M-N Grape and Cable 11" ruffled bowl--BW exterior**
113. P-N Grape and Cable Vt. 7 3/4" plate--Leaf center, good color
114. **P-N Grape and Cable 6" handgrip saucer--Different!**
115. G-N Grape and Cable Vt. 8" handgrip plate--Lots of color, Leaf center
116. **P-N Grape and Cable bonbon--BW exterior**
117. P-N Grape and Cable powder jar, no lid--3 1/8" top opening
118. **Dark M-N Grape and Cable bonbon**
119. M-N Grape and Cable 8 1/2" round, flared bowl--unusual shape
120. **P-N Grape and Cable hatpin holder**
***121. RARE Ice B-N Three Fruits stippled PCE bowl, Rib exterior--A Show Stopper!!**
122. **Elec B-N Three Fruits stippled 9" plate--Nicest one to come through in awhile**
123. M-N Three Fruits 9" plate--BW exterior
124. **Spectacular M-N Three Fruits stippled plate--Incredibly nice, w/ Rib exterior**
125. Scarce M-N stippled Fruits and Flowers bonbon
126. **P-N Three Fruits 9" plate--Multi electric**
127. M-Novelty ashtray with Thunderbird in center
128. **Cobalt B-N Fine Rib 9 1/2" vase--Top notch electric color**
129. M-Split Diamond creamer
130. **A-N Grape and Cable sweetmeat whimsey compote**
131. M-European (?) 8-sided, two handled small basket
132. **G-Fenton Holly 8 1/4" deep, round bowl--Electric hues**
133. B-Fenton Thistle 8 3/4" ruffled bowl--Sweet
134. **B-Fenton Holly 9" ruffled bowl--Luscious purples and greens!**
135. Lav-Fenton Holly 8-ruffle, 9" bowl--Scarce color
136. **Unusual G-Fenton Holly 9" ruffled bowl--Outstanding color**
137. G-Plain Jane ruffled compote
138. **M-Fenton Thistle banana boat--Dark and pretty**
139. M-Fenton Flowers rosebowl--Vivid colors
140. **Pastel Marigold Opal--Fenton Dragon and Lotus 8 3/4" ruffled bowl--Makes a statement!**
141. M-Fenton Dragon and Lotus 8" spat ftd, ruffled bowl
142. **Deep B-Fenton Peacock and Dahlia 7" ruffled bowl--Great, great color**
143. M-Fenton Two Flowers 9", ICS, ball footed bowl
144. **Great M-Fenton Feather Stitch 9" ruffled bowl**
145. B-Fenton Holly 9" ruffled bowl
146. **Light P-Fenton Peacock Tail 8" round, flared bowl--Different and delightful**
147. M-Fenton Orange Tree Fruit Bowl--One of the best you'll see
148. **M-Imp Rose 10" round, flared bowl--Painted flowers and leaves inside, interesting!**
149. M-Rex water pitcher and nine tumblers
150. **M-Imp Lustre Rose 7 pc water set--Very nice set**
151. G-Imp Heavy Grape 8" plate
152. **M-Imp Scroll Embossed 9 1/2" plate--Way above average**

153. M-Imp Double Scroll console bowl
154. **M-Imp Double Scroll candlesticks--pair**
155. B-Fenton Vintage fernery
156. **Rich M-Imp Windmill milk pitcher**
157. Great Smoke-Imp Rococo ruffled bowl--Purples and blues
158. **Rare Lime Ice Green-N Fine Cut and Roses candy dish w/ Fancy interior--Normal feet, but so pretty!**
159. G-Imp Scroll Embossed 9 1/4" plate--Very, very colorful for a green example
160. **Scarce P-Dugan Wishbone and Spaded 5 3/4" ruffled bowl--Lots of blues**
161. M-Australian Kangaroo 5 1/2" sauce bowl w/ 12 ruffles--Nice!
162. **Scarce P-Dugan Maple Leaf stemmed 5 pc berry set--Super pretty for this pattern!**
163. Rare Chinese Coral-N 9" round, flared bowl advertising Citizens Mutual Trust and dated 1924, w/ BA base
164. **Red-Imp Wide Panel 8 1/2" stretch plate--Dark and vibrant color!**
165. W-Stretch Wide Panel 10 1/4" flared bowl
166. **Light Blue-U.S. Glass stretch 10" Open Work bowl, rolled edge--Very Scarce piece of stretch**
167. Pearl White-Imp 7" square bowl--Iron Cross Mark--rim ding on base
168. **Electric P-Imp Grape punch set with six cups--Gorgeous color inside and out**
169. M-N Peacock at Fountain punch bowl and base--Hot pinks and blues
170. **M-N Peacock at Fountain punch cups--3 x \$**
171. P-Imp File 8" ruffled bowl--Electric all the way
172. **P-Imp Scroll Embossed 9 1/2" plate--Exquisite electric, WOW!**
173. P-Imp Star of David 8 3/4" ruffled bowl--Another electric example
174. **Rich M-Imp Double Dutch 9" round, flared bowl**
175. W-Fenton Cornucopia vase--Frosty
176. **W-Dugan Fanciful 9 1/4" ruffled bowl--Superb pastels**
177. M-Dugan Double Stem Rose 8" deep, round bowl
178. **M-Dugan Fanciful 8 1/2" flared plate**
179. Scarce M-Inverted Coin Dot 7 pc water set
180. **W-Dugan Dahlia butter dish--Fantastic**
181. W-Dugan Dahlia water pitcher with gilt flowers--Nice
182. **W-Dugan Puzzle stemmed bonbon**
183. W-Orangel Peel stemmed sherbets--mkd Julepped Oranges--4 x \$
184. **W-N Peach sugar with lid**
185. W-Stretch Kralik (?) art glass 7" vase--Polished pontil
186. **Lime Vas-Daisy Squares rosebowl, w/ tricorn, crimped top--Glows**
187. M-Daisy Squares rosebowl w/ round, crimped top
188. **Velva Rose--Fenton stretch Melon Rib cupped bowl**
189. Dark M-N Three Fruits Medallion spat ftd, ruffled bowl
190. **B-N stippled Three Fruits Medallion ruffled bowl**
191. A-Dugan Leaf Rays spade shape nappy
192. **Lav-Dugan Leaf Rays ruffled nappy--Attractive**
193. M-Fenton Orange Tree standard size mug
194. **Sapphire-Fenton Orange Tree standard size mug**
195. Brick Red-Fenton Orange Tree standard size mug--flared top
196. **Red-Fenton Orange Tree shaving mug--Bruises in base rim**
197. Radium M-Fenton Orange Tree standard size mug--peeling on handle
198. **G-N Grape and Cable Vt. PCE bowl--BW exterior**
199. G-N stippled Grape and Cable Vt plate with Rose Distillery Advertising on base--Attractive
200. **B-1914 Parkersburg Elks 7 3/4" plate--Truly Beautiful!**
201. A-Davidson's Society Chocolates 6 1/2" handgrip advertising plate--Real, real nice

_____ 202. Lav-Dreibus Parfait Sweets 2-sides up advertising plate--Another winner!

_____ 203. B-Singleton Bailey swung Hobnail 16 3/4" vase

_____ 204. Cobalt B-Singleton Bailey 12" Heavy Iris vase

_____ 205. Cranberry Opal-Singleton Bailey JIP Poppy Show vase

_____ 206. BA-4" tall tumbler, hobnail style

_____ 207. P-N Grape and Cable stippled tumbler--Electric

_____ 208. Pumpkin M-N Grape and Cable stippled tumbler

_____ 209. Scarce G-N Peacock at Fountain tumbler

_____ 210. P-N Grape and Cable tankard tumbler--Big Boy!

_____ 211. Cobalt B-Enameled Columbine water pitcher

_____ 212. M-N Raspberry 7 pc water set

_____ 213. Rich M-N Grape and Cable water pitcher and five tumblers--Super pitcher

_____ 214. Deep P-Dugan Maple Leaf water pitcher and four tumblers--Not often seen

_____ 215. B-Fenton Butterfly and Fern water pitcher--Fun pattern

_____ 216. G-Fenton Butterfly and Fern water pitcher--Extra nice

_____ 217. Very Scarce P-Dugan Dahlia 7 pc water set--Here's your chance to buy a nice one

_____ 218. Light M-Dugan Heavy Iris tankard water pitcher and five tumblers

_____ 219. Very Scarce W-Dugan Heavy Iris 7 pc water set--Loaded with rainbow of colors!

_____ 220. P-Dugan Heavy Iris tankard water pitcher--Electric hues

_____ 221. G-N Dandelion tankard water pitcher--Another one that is hard to come by

_____ 222. M-Imp File tumbler

_____ 223. G-Fenton Butterfly and Fern tumbler--Really nice

_____ 224. B-Fenton Apple Tree tumbler

_____ 225. Lav-N Grape and Cable Vt 8 3/4" ruffled bowl w/ smooth exterior--Delightful

_____ 226. G-N Strawberry 8 3/4" ruffled bowl--Above average

_____ 227. M-My Lady powder jar--This is a good one

_____ 228. Rich M-Sweet Pea thin and wide rib flower arranger, 4" tall, 6 1/2" opening--Great eye appeal

_____ 229. Scarce Amber-Fenton Blackberry Spray 6 1/2" ruffled hat

_____ 230. Sapphire-Fenton Blackberry Spray 6 1/2" square hat--Two sets of berries

_____ 231. Yellow-Fenton Acorns 7 3/4" ruffled bowl--Glows tangerine, cool piece!

_____ 232. Electric B-N 9 1/4" flat Poppy Show plate--Head of the class!

SPECIAL NOTE:

NO SUNDAY CALLS, PLEASE!

Winning Absentee Bidders will be contacted Monday through Wednesday of the week following the Auction!

Thank You!

SEND ALL MAIL TO:

18350 Hunters Ridge Ct.

Boonville, MO 65233

WATCH:  Web Site: www.AWK-SHN.com

233. Electric G-N Poppy Show ruffled bowl--These just don't come up for sale, here's your chance!

234. M-Fenton Acorns 7 1/2" ruffled bowl

235. M-Australian Kangaroo 9 1/2", 16 ruffle master bowl--Great detail and great color

236. G-Fenton Persian Medallion bonbon

237. Vas-Fenton Persian Medallion bonbon

238. B-Fenton Captive Rose bonbon--Neat item!

239. B-Fenton Cherry Circles round bonbon--Excellent color

240. Persian Blue-Fenton Peacock at Urn 9", ruffled bowl--Very few known

241. Superb M-Fenton Peacock at Urn 9" ruffled bowl--Pumpkin

242. W-Fenton Peacock at Urn ruffled compote--Here's a scarce color

GREAT RUN OF HORSE MEDALLION BOWLS, ALL OF THEM COLLAR BASE:

243. Rich M-Fenton Horse Medallion 7" ICS bowl

244. G-Fenton Horse Medallion 6 1/2" ICS bowl--Very pretty

245. A-Fenton Horse Medallion 7" ICS bowl--Tough color to find

246. Powder B-Fenton Horse Medallion 6 3/4" ICS Bowl--Yet another scarce color

247. Rare Brick Red-Fenton Horse Medallion nut bowl

248. Vas-Fenton Horse Medallion 6 1/2" nut bowl--Looks for the world like marigold w/ clear base, but glows wildly under blacklight!!!

249. B-Fenton Horse Medallion 6 1/4" nut bowl--Beautiful with crisp strike!

250. W-N Beaded Cable rosebowl--And it's a nice one

251. RARE Super Pastel Honey Amber-N stippled Three Fruits 9 1/4" plate--Tough call on the color, it is so different, take a look!

252. Blue Opal-N stippled Three Fruits ruffled bowl--Non iridized, a beauty and scarce

253. Blue Opal-N Lattice and Poinsettia footed, ruffled bowl--Another great opal piece

254. Blue Opal-Pastel Swan salt--non-iridized

255. Very Scarce Vas Opal--Pastel Swan salt--non-iridized

256. Frosty White-Fenton Orange Tree loving cup

257. M-Sowerby Hen and Chicks covered dish--A better example

258. B-Fenton Holly 9 1/4", 3 in 1 edge bowl--Nice, nice, nice

259. Rich M-Fenton Holly 9", ruffled bowl--Common, but uncommonly nice

260. Powder B-Fenton Holly ruffled compote

261. M-Fenton Holly crimped edge compote

262. Very Scarce Deep P-Dugan Heavy Grape 10 3/4" ruffled bowl--Electric purples, blues and golds inside

263. M-N Wild Rose 7 1/2" bowl

264. Frosty Ice Blue-N Grape and Cable cologne bottle w/ stopper--Awfully scarce and awfully nice

265. G-N Grape and Cable hatpin holder--Classic carnival glass item

266. Pumpkin M-N Grape and Cable hatpin holder

267. B-Fenton Orange Tree loving cup--Exceptional color inside, factory bubble in base

268. Smoky blue pastel????-N Leaf and Beads rosebowl, great marigold overlay. Again, a very odd color!

269. M-Grape and Cable powder dish with lid

270. Scarce Sapphire-Fenton 2-Row Open Edge JIP basket

271. Ice B-N Fine Cut and Roses rosebowl w/ Fancy interior

272. Fantastic AO-N stippled Grape and Cable PCE bowl--Nearly 2" of opal, a killer piece!

273. Electric B-N stippled Grape and Cable PCE bowl--Rib exterior, a crowd pleaser for sure!

274. Custard w/ nutmeg-Grape and Cable 7 1/2" ruffled bowl

275. Custard w/ nutmeg-Grape and Cable breakfast sugar

276. Custard w/ nutmeg-N Grape Arbor whimsied hat from tumbler

277. Custard w/ nutmeg-N Grape Arbor whimsied hat from tumbler

278. Custard-Fisherman's mug

279. Custard w/ nutmeg-N Grape and Cable sherbets--2 x \$

280. Electric G-N Wishbone footed, ruffled bowl--A great find

281. Pastel M-N Wishbone footed, ruffled bowl--Very pretty

282. M-N Strawberry 9 1/4" plate--Excellent item

283. Dark M-N Peacocks 9" plate--Lots of pinks

284. Superb B-N Peacocks ruffled bowl--Multi electric

285. P-N Peacocks ruffled bowl--Loaded with color, this one is eye candy!!

286. G-N Poppy pickle dish--Lots of blues

287. Elec B-N Fruits and Flowers stemmed bonbon

288. M-Fenton Grape and Cable 9" ball footed plate

289. Wonderful M-Fenton 9 1/4" Leaf Chain plate--Pastels deluxe!

290. Rare M-Fenton Persian Medallion 9 1/4" plate with Bearded Berry exterior. Old, good, rare!!

291. RED-Fenton Flute 9 1/4" vase--Scarce and nice!

292. G-Fenton Flute 9 1/2" vase--Equally scarce and a knockout!!

293. G-N Corn Vase with stalk base--Be-yoo-ti-ful!

294. Lime Green-N Corn Vase with stalk base--lots of blue highlights

295. Excellent Sapphire-N Leaf Columns 9 3/4" vase--Rare and very colorful

296. B-N Diamond Points squatty 7 1/2" vase--Great color

297. M-N Good Luck ruffled bowl--Pretty in pinks

298. Pastel M-N Good Luck PCE bowl--Low, wide and wonderful

299. M-Fenton Orange Tree 8" deep, flared nut bowl--One of how many?

300. Gorgeous M-Fenton Peacock Tail 9 1/4" plate--Yessir!!

301. RED-Fenton Fine Rib 9 3/4" vase--This one looks red, too!

302. Vas Opal-Fenton Fine Rib 10" vase--Very scarce, non-iridized

303. Red-Fenton Plume Panels 12" vase, 9 1/2" front height--Great shape and great color

304. Blue Opal-N Drapery 8" vase--Scarce and full of opal

305. RED-Fenton Butterfly and Berry 8 1/2" vase--Rare and has outstanding color

306. Powder Blue Opal-Fenton Boggy Bayou 4 1/2" squatty vase--Neat piece--Non-iridized

307. Custard w/ nutmeg-N Fine Cut and Roses rosebowl, plain interior--Non-iridized

308. Custard-Prayer Rug JIP 5 3/4" footed vase--Very scarce

309. Custard w/ nutmeg--N Grape and Cable sherbets--6 x \$

Final fifty items----Approx 25 pieces of carnival and stretch glass followed by 25 carnival glass jewelry items

 **Call Today To Sell
Your Fine Items**
660-882-5292 Day
660-882-5283 Evening



168



169



219



235



282



100



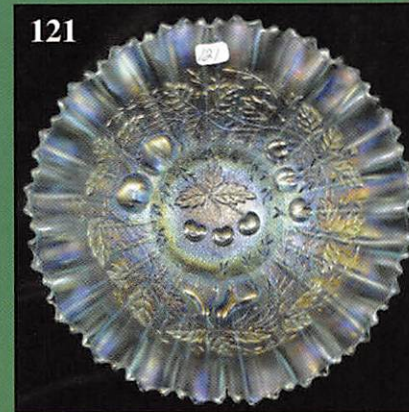
10



124



122



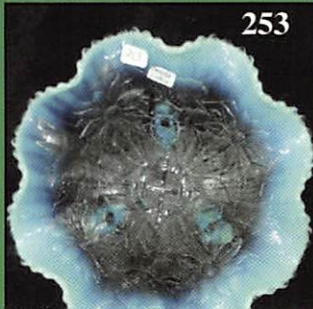
121



300



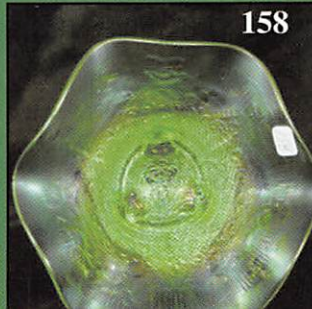
221



253



284



158



285

CARNIVAL G

Saturday, March 14, 2003

FRIDAY PREVIEW: March 13th - 12th

WEB SITE: WWW

*Held at The Mickey Reichel Auction
Wilton and Betty
1440 Ashley Road •
Please reply upon receiving this*

MASS AUCTION

2009 - 9:00 a.m. Sharp

Noon - 5:00 pm & 7:30 a.m. Auction Day

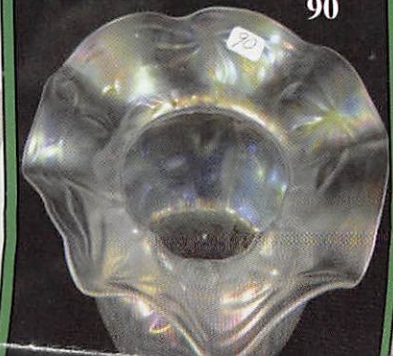
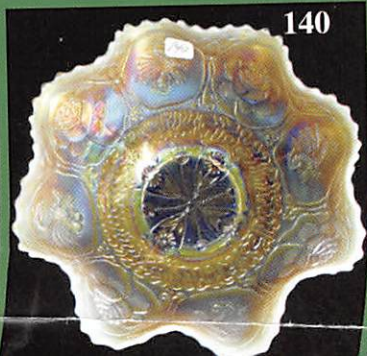
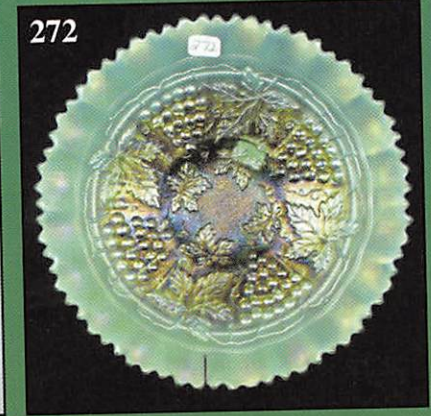
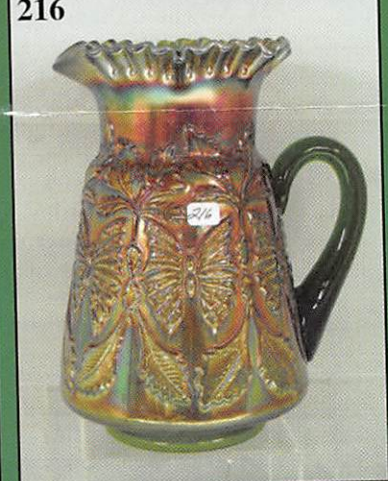
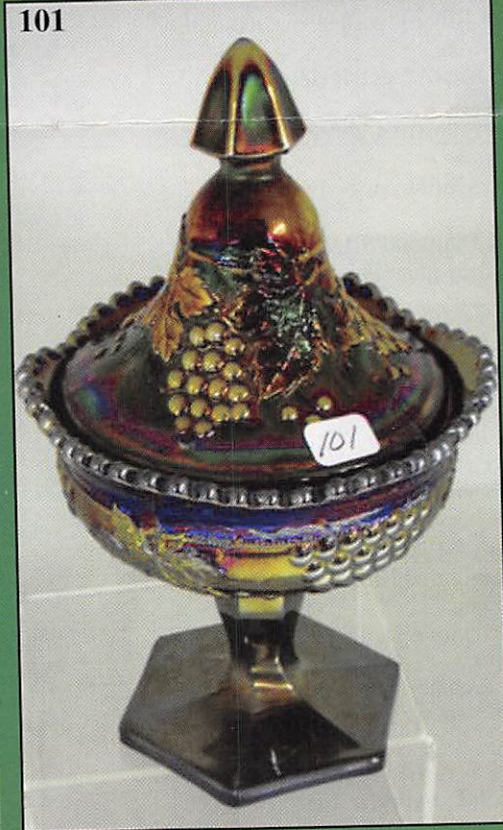
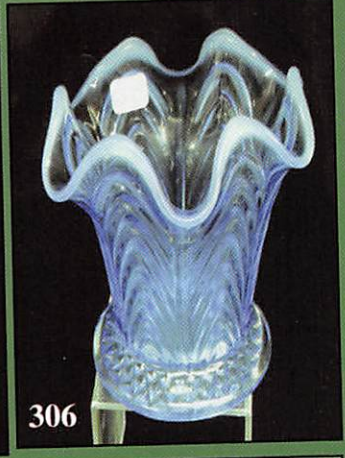
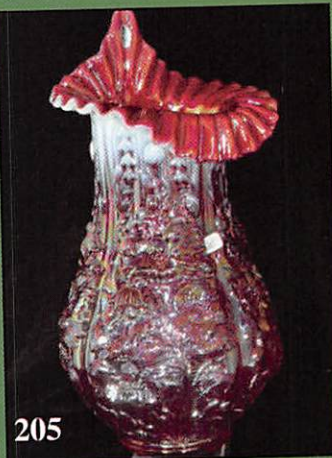
WWW.AWK-SHN.COM

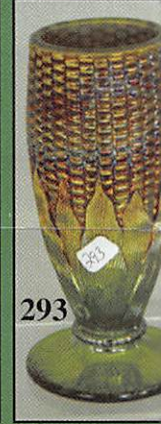
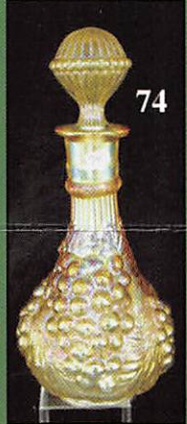
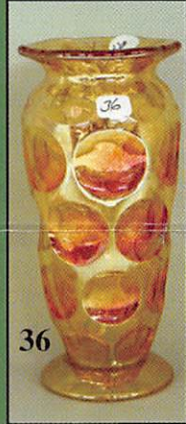
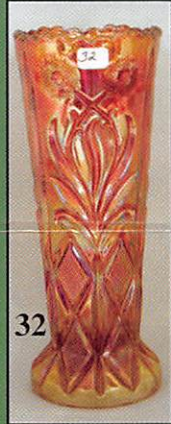
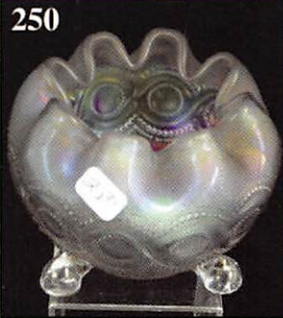
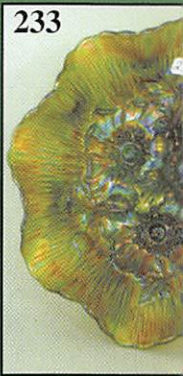
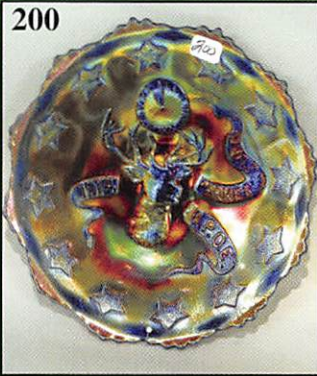
Antique Gallery and Real Estate Center

Visner Collection

Boonville, Missouri

~ Respectfully, Mickey Reichel





★★★ NO BUYERS

Make Reservations EARLY

Days Inn: 660-882-8624 • Comfort Inn: 660-882-5317

ABSENTEE B

PLEASE NOTE: There is a \$6 handling charge for each successful bid which will be added to packing. Your write-in bid will be entered just as if you are present and bidding. Successful bid (number). Direct mail bids to Auctioneer Mickey Reichel, 18350 Hunters Ridge Ct., Boonville, MO. References. Announcements made day of the auction supercede all printed material. Not Responsible for shipping.

Call for additional information: 660-882-5292

FAX: 660-882-5292 (evening hours)

E-mail: mreichel@AWK-SHN.com

Held Inside the Mickey

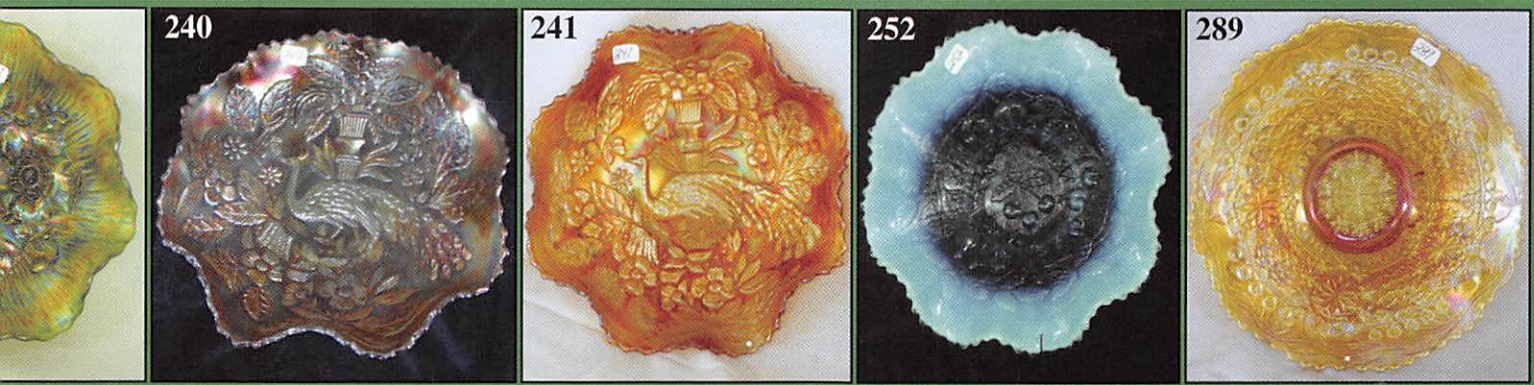
1 Mile North of I-70 on Hwy. 5, Exit 101, Boonville



TERMS: Cash or Good Check,

4% Clerking Fee on all purchases except for p

*** No return on any items once they leave



PREMIUM ★★★
 at one of these local motels:

• Super 8: 660-882-2900 • Holiday Inn: 660-882-6882
BID POLICY:
 to the selling price for all write-in bids. This is in addition to the cost of postage, insurance and
 orders will be notified in 1 to 3 days by the auctioneer (so be sure to include your phone
 MO 65233-2971. Terms: Cash or Check accepted with proper I.D. and Social Security Number and
 ble for Accidents or Sold Items. Call in Bids before Auction Welcome!
 days or 660-882-5283 evenings before 9:00 p.m.

(start FAX transmission after beep)
 Web Site: www.awk-shn.com

Reichel Auction Center
 Missouri • 20 Miles West of Columbia, MO on I-70
 VISA and MasterCard accepted. **VISA**
 Payment of cash or check. Proper I.D. required.
 at the Auction Center (No Exceptions) * * *



SEE REVERSE FOR DETAILS