

1. M-Fenton Cherry Chain 6" ruffled bowl
2. **G-Imp Grape 9" ruffled bowl**
3. Light M-N Grape and Cable 6" ruffled bowl
4. **M-Jacobean Ranger water bottle from night set**
5. M-4 1/4", 8-sided non-American basket
6. **Smoke-Imp Open Rose 9" round, flared bowl--nice**
7. M-Fenton Panther ruffled berry bowl
8. **B-Fenton Garland rosebowl**
9. P-N Singing Birds mug
10. **W-Dugan Lattice and Points 9" vase--fine pastels**
11. Radium M-Honeycomb bonbon, 2 sides up
12. **B-Fenton Birds and Cherries 9" CRE bowl--A scarce one!!**
13. M-Fenton Grape and Cable 9" ball-footed plate
14. **B-Fenton Captive Rose 9" plate**
15. M Flash-Golden Wedding pint whiskey bottle
16. **M-Fenton Leaf Chain 9 1/4" plate--Outstanding example**
17. M-Left hand 9" vase--red flashed rim
18. **M-N Strawberry 9" plate--Stretchy and colorful**
19. M-Miniature Absentee Blackberry compote
20. **M-N Grape and Cable dresser tray--Great item**
21. **P-N Grape and Cable whimsy compote**
22. **P-N Fruits and Flowers 7 3/4" two sides up plate**
23. B-Fenton Vintage (Grape) fernery--exceptionally nice
24. **M-Fenton Wild Blackberry 9 1/4" plate--Only second one I know of and it's the unaltered real deal!**
25. M-Fenton Holly goblet shape compote
26. **G-Fenton Lotus and Grape 9" ruffled bowl--powerfully pretty**
27. M-Fenton Stippled Rays/Scale Band 7" plate
28. **Scarce Lime Vas-Fenton Peacock and Grape 9" ruffled bowl--Attractive, too**
29. **Very Rare Lime Green-N Tree Trunk mid-size 11 1/2" vase--Super piece, ex-Bingham collection**
30. **Super Green-N Tree Trunk mid-size 12 1/2" vase--Loaded with color**
31. **Fabulous W-N Tree Trunk mid-size 10 1/4" vase--A pastel monster**
32. **Electric B-N Tree Trunk mid-size 11 3/4" vase--They don't get much better than this one**
33. M-Fenton Blackberry Spray 6" 2-sides up hat--excellent color
34. **M-Fenton Orange Tree whimsy compote from wine glass--Neat!**
35. M-Fenton Holly ruffled compote
36. **Vas-Fenton Holly 6 1/4", 2 sides up hat--Glows wildly**
37. Pumpkin M-Fenton Captive Rose 8 3/4" ruffled bowl
38. **G-Fenton Captive Rose ICS 8 1/2" bowl--Check out the Bearded Berry exterior, scarce on these and great electric green highlights**
39. M-Fenton Two Flowers scarce collar base 8 1/2" ruffled bowl
40. **B-Fenton Persian Medallion 9 1/4" ruffled bowl--also has Bearded Berry exterior and superb color**
41. W-Fenton Persian Medallion rosebowl--Awesome pastels
42. **Deep M-Fenton Persian Medallion 9" ruffled bowl--Bearded Berry exterior, very pretty**
43. P-Fenton Persian Medallion 8 1/4", 2 in 1 crimped bowl--Nice one
44. **M-Fenton Orange Tree sherbet**
45. M-Fenton Heart and Vine 9" ruffled bowl--Lovely colors
46. **G-Fenton Lotus and Grape 8 1/2", 3 in 1 edge bowl--Snazzy**
47. Red Amberina--Fenton Blackberry Spray 6 3/4" ruffled hat
48. **Red-Fenton Holly ruffled compote--Amber base!**
49. Cherry Red-Fenton Stippled Rays 6" ICS bowl
50. **Sapphire Opal-Fenton Blackberry Spray 6" ruffled hat--Extremely scarce and pretty**
51. M-Fenton Butterfly and Berry 4 pc table set--Well-matched grouping
52. **G-Cambridge Buzz Saw small cruet with good stopper**
53. Crystal-Cambridge Buzz Saw large cruet with stopper--Unusual
54. **Crystal-Imp Chatelaine water pitcher--A rare pitcher**
55. **Lav tint-Fenton Kittens cereal bowl--Crisp strike, strong marigold overlay**
56. **M-Westmoreland Intaglio Flower 4 1/4" four sides up basket--Lavender opal tints on rim**
57. **Exceptional Pumpkin M-Fenton Kittens cup and saucer--Unbeatable**
58. **M-Imp Little Barrel--nice**
59. **Super G-Imp Little Barrel**
60. **Very Scarce Amber-Imp Little Barrel**
61. W-Fenton Cornucopia 5 1/2" candlestick vase--Frosty
62. **B-N Peacocks stippled PCE bowl**
63. P-N Peacocks PCE bowl--Rib exterior
64. **Fantastic M-N Peacocks stippled 9" plate--Look at those yellows and greens!**
65. PO-Dugan Apple Blossom Twigs 8 1/2" flared plate--Lots of opal
66. **Radium M-Fenton Orange Tree 9 1/2" plate**
67. Dark Ice B-N Hearts and Flowers ruffled 8 3/4" bowl--Lots of color here
68. **Yellow Custard w/ Marigold Overlay--Fenton Prayer Rug bonbon--Scarce and desirable piece**
69. P-Mlbg Whirling Leaves 9 1/2" ruffled bowl--Great, great radium finish
70. **Electric P-Dugan Daisy Web ruffled hat--Blues and Purples deluxe!**
71. G-Mlbg Holly Whirl 10" ruffled bowl--Satin pinks and blues
72. **G-Mlbg Holly Sprig 7" ruffled bowl--Fine radium finish**
73. M-Mlbg Blackberry Wreath 10 3/4", 3 in 1 edge bowl--Pleasing radium pastels
74. **P-Mlbg Blackberry Wreath 8 1/4" ICS bowl--Great radium finish**
75. G-Mlbg Blackberry Wreath 10 1/2", 3 in 1 edge bowl--Another radium gem
76. **G-Mlbg Grape Wreath Vt 8 1/2", 3 in 1 edge bowl--Star center, radium blues and purples**
77. Red Amberina--Double Scroll candlesticks, pair--Pretty
78. **Scarce Smoke-Imp Daisy 9 3/4" handled basket**
79. P-N Nippon 8 1/2" ruffled bowl--Electric blues and purples
80. **Ice B-N Nippon PCE bowl--Rib exterior**
81. Pumpkin M-Fenton Lotus and Poinsettia 9 1/2" ruffled, footed bowl--Top shelf color
82. **M-Fenton Two Flowers 9" ICS, footed bowl**
83. Very Scarce G-Mlbg Deep Grape 6 1/2" round, flared compote--Seldom seen and much in demand
84. **P-Mlbg Strawberry Wreath 6 3/4" ruffled compote--Magnificent radium hues**
85. B-Fenton Orange Tree 9" plate with trunk center--Tip chip
86. **Rare M-Fenton Persian Medallion 9 1/2" plate w/ Bearded Berry exterior**
87. M-Eda Sunken Daisy 7" rosebowl--Dark and nice
88. **G-Mlbg Blackberry Wreath 6", 3 in 1 edge sauce bowl--Satin and pretty**
89. P-Mlbg Peacock at Urn 10" ICS Bowl--Great satin hues in center
90. **M-Mlbg Hanging Cherries 10" ICS bowl--Excellent example**
91. B-N Hearts and Flowers ruffled compote--Chip on base
92. **G-Cambridge Inverted Feather cracker jar with lid--Good color**
93. Pastel M-N Peacocks PCE bowl--Sharp tip, but so what?
94. **Pumpkin M-Fenton Grape and Cable/Persian Medallion fruit bowl--So pretty it hurts!**
95. G-N 6 1/2" Tornado vase--Bruise in base rim, still scarce and desirable
96. **P-N Corn vase with plain base--Golden kernels and leaves**
97. G-N Three Fruits 9" plate--As nice as you want
98. **B-N Fruits and Flowers stemmed bonbon--Delicious electric**
99. Superb G-N Fine Cut and Roses rosebowl--Buffed feet
100. **ULTRA RARE Renninger Blue-N Grape and Gothic Arches water pitcher. Virtually unheard of color for Northwood water pitchers, some nice electric tints--How pretty is yours?**
101. Electric B-N Grape and Gothic Arches tumbler
102. **B-Floral and Grape tumbler--One of the better ones**
103. M-Imp Ripple 10 1/4" vase
104. **Radium M-Imp Freefold 12" vase--Eye catcher!**
105. G-N Thin Rib 6" squatty vase--Starred base, extra short example
106. **W-N Tree Trunk 11" vase--Uncommon color**
107. Radium M-N Tree Trunk 11 1/4" vase
108. **PO-Fenton Dragon and Lotus 8 1/2", ruffled bowl--Scarce and nice**
109. M-Fenton Dragon and Lotus 9" ruffled bowl--Pinks and blues
110. **Rich M-N Three Fruits stippled 9" plate--Rib exterior**
111. M-Scroll Embossed large ruffled compote--Eastern Star exterior
112. **Lime Vas-Daisy Squares CRE compote--Heavy marigold overlay**

113. G w/ Gold Trim-N Peach spooner--Not iridized, but lovely
114. **P-Imp Heavy Grape 7 1/4" ruffled bowl--Electric**
115. Pumpkin M-N Grape and Cable banded hatpin holder--Wow, what a piece!
116. **Scarce Chinese Coral-N 9" flared, round bowl with black amethyst base**
117. Scarce Chinese Coral-N #695 8 1/2" candlesticks, pair
118. **Aqua/Teal Dugan Stippled Estate rare 2-sides up cuspidor--Totally unique**
119. Rare Pumpkin M-N Grape and Cable cup and saucer--Very, very nice
120. **Rare W-N Grape and Cable cup and saucer, with turned up saucer**
121. Radium M-Propeller 5" compote
122. **Gorgeous P-N Three Fruits Medallion spat ftd ruffled bowl--Electric iridescence**
123. G-N Grape and Cable hatpin holder--Electric highlights
124. **P-Pastel Swan salt--Excellent and scarce**
125. **AO-RARE Daisy & Plume Rosebowl, Raspberry Int. Super Pastel, 1 of maybe 4 known--Chip on feet--Still Ultra RARE & Beautiful**
126. **AO-Super Pastel N, Grape & Cable PCE bowl loaded for bear--WOW!!**
127. P-N Strawberry 8 1/2" ruffled bowl--Multi electric interior, plain back
128. **Pastel M-N Strawberry stippled PCE bowl--What a killer!!**
129. P-N Three Fruits 9" plate--Attractive hues
130. **Pastel M-N Three Fruits 8 1/2" plate--Blues and pinks**
131. P-N Three Fruits 8 1/2" ruffled bowl--Plain exterior, electric hues
132. **Stunning P-N Grape and Cable 9" plate**
133. P-N Fine Cut and Roses ruffled bowl--Plain interior
134. **Scarce P-Fenton Cherry Chain 10" ruffled bowl--Big and beautiful, looks red, Orange Tree exterior**
135. Incredible G-Fenton Dragon and Lotus 9" ruffled bowl--Find one better!
136. **Scarce P-Fenton Dragon and Lotus 9" ruffled bowl**
137. **M-Illinois Soldiers' and Sailors Home plate--A dandy!**
138. **M-Fenton Captive Rose 9 1/4" plate--Well detailed and a beauty**
139. P-Imp Grape 9" ruffled bowl--Imperial's finest electric hues!
140. **P-Imp Grape 9 1/2" round, deep bowl--Stunning color inside and out**
141. P-Imp Star of David 9" ruffled bowl--Electric colors, electric blue star
142. **M-Imp Scroll Embossed 9 1/4" plate--Fine example**
143. PO-Dugan Single Flower 7 3/4" CRE plate
144. **Fantastic M-Peter Rabbit 9" plate--One of the top items in the sale!**
145. Radium G-Fenton Ribbon Tie 8 3/4", 3 in 1 edge deep bowl--Don't see many of these!
146. **P-Imp Hobstar Flower ruffled compote--Electric all the way**
147. Rich M-Hobstar Nu-Cut 10" vase--This ones got the look!
148. **G-N Flute 12" mid-size vase--Alaskan effect**
149. Scarce Amber--Fenton Holly JIP, CRE hat--Super radium find
150. **Lime Vas-Fenton Two Flowers 11", ball footed, ruffled bowl--Tough to come by**
151. **Vas-Fenton Dragon and Lotus 9" ruffled bowl**
152. **Vas-Fenton Open Edge Blackberry, 2-sides up, 7" hat--Clean and pretty**
153. Powder B-Fenton Ribbon Tie 9", 3 in 1 edge bowl--Scarce color
154. **Electric P-Imp Freefold 13 1/4" vase--Achingly beautiful**
155. P-Imp Parlor Panels 12" vase with wide mouth--Great color on this vase
156. **Electric P-Imp Beaded Bullseye 11" vase**
157. P-Imp Ripple 11 3/4" vase, 5" top--Multi electric
158. **M-Fenton April Showers 11 1/4" vase**
159. Unusual Blue--Fenton Butterfly and Berry 8 1/2" vase--Looks great!
160. **P-Imp Ripple 8 1/4" vase--All electric hues**
161. Cobalt Blue-Ripple 8" swung vase--Wow is this dark blue, no iridescence, still very rare
162. **P-Imp Ripple 6 1/2" swung vase--Super color and super look**
163. P-N Tree Trunk 6 3/4" squatty vase--Multi electric
164. **Fabulous BA--Dugan Big Basketweave 4 3/4" vase and this really is a vase--Electric inside and out**
165. Scarce Violet-Imp Windmill 5 1/2" ruffled sauce bowl--Unreal electric
166. **W-Fenton Holly 9", 3 in 1 edge bowl--Exceptional color**
167. Gorgeous B-Fenton Stag and Holly 10" ICS, ball-footed bowl--Very few ever look like this!
168. **M-Dugan Weeping Cherries 9", 10 ruffle, dome footed bowl--Scarce pattern**
- 15 Piece Fine Cut and Roses**
- ***** **Rosebowl Collection** *****
169. Yellow Custard w/ Nutmeg--N Fine Cut and Roses rosebowl--Rare, not iridized
170. **Pumpkin M-N Fine Cut and Roses rosebowl, pinched top**
171. M-N Fine Cut and Roses rosebowl
172. **G-N Fine Cut and Roses rosebowl**
173. W-N Fine Cut and Roses rosebowl--Fancy interior
174. **Mint Green-N Fine Cut and Roses rosebowl--Fancy interior, distinctly different color!**
175. Dark Ice B-N Fine Cut and Roses rosebowl--Fancy interior
176. **P-N Fine Cut and Roses rosebowl--Fancy interior**
177. G-N Fine Cut and Roses rosebowl--wide open top, you could call it a vase, almost
178. **Rare Smoke-N Fine Cut and Roses rosebowl**
179. Lav-N Fine Cut and Roses rosebowl
180. **Smoky B-N Fine Cut and Roses rosebowl--Another very unusual color!**
181. A-N Fine Cut and Roses rosebowl--Variant, with no collar ring
182. **Lav-N Fine Cut and Rosees rosebowl--Variant with no collar ring**
183. G-N Fine Cut and Roses rosebowl--Variant with no collar ring
184. **Scarce Pastel Lav-Fenton Holly ruffled compote, marigold overlay**
185. G-Mlbg Blackberry Wreath 6 1/2", 3 in 1 edge sauce bowl
186. **M-Fenton Concord 3 in 1 edge bowl--Scarce**
187. B-Fenton Captive Rose 9 1/4" plate--Electric hues
188. **M-N Peacocks stippled PCE bowl--Pretty pastels!**
189. Scarce A-Fenton Vintage Grape 7 1/2" plate--Awesome radium electric finish
190. **P-Dugan Cherries 10 ruffle, 8", footed bowl--Loads of color**
191. P-N Strawberry 8 3/4" ruffled bowl--Smooth exterior, electric blues and purples
192. **P-Dugan Many Fruits punch bowl, base and six cups--Just an exceptional hunk of glass**
193. **Electric P-Imp Grape Punch bowl, base and six cups--Impressive find**
194. **Very scarce B-N Grape and Cable stippled punch bowl, base and eight cups--The search ends here!**
195. **Super P-N Grape and Cable punch bowl, base and six cups--One of the better ones!**
196. **PO-Dugan Jewelled Heart 10 1/2" ruffled bowl--Smooth Ray interior**
197. PO-Dugan Ski Star 11" ruffled bowl
198. **PO-Dugan Four Flowers 9 1/2" round bowl--Soda Gold exterior, nice look to this bowl**
199. PO-Dugan Fanciful 8 1/2" low ruffled bowl--Very colorful
200. **PO-Fenton Peacock and Grape 8 1/2" ruffled bowl--Hot pinks and blues**
201. PO-Fenton Dragon and Lotus 9" ruffled bowl--Pastel look, hard to find
202. **PO-Dugan Soutache 9" CRE dome footed bowl/plate**
203. PO-Dugan Flowers and Frames 8", ten ruffle, deep bowl
204. **G-Fenton Persian Medallion 9 1/2", 3 in 1 edge bowl--Excellent color**
205. B-Fenton Feathered Serpent 10", 3 in 1 edge bowl--Sweet satins
206. **B-Fenton Captive Rose 9", six ruffle bowl--Lovely center**
207. G-Fenton Captive Rose 9", six ruffle bowl--Blue roses, reddish background
208. **Emerald Green-N Rose Show ruffled bowl--Minor rim flaws--salt spots, tiny fissure--So? Find one better!**
209. Lime Green-N Rose Show ruffled bowl--Great pastels, as pretty as they get
210. **G-N Grape and Cable Vt. 9 1/4" plate, with BW exterior--Wow, is this a pretty piece!**
211. Celeste Blue-Fenton Blackberry Open Edge 6 3/4" basket--Very, very scarce color and so nice!
212. **White Stretch--U.S. Glass 7 1/2" (Plate #714) candlesticks, pair**

213. BA-Australian Magpie 5 1/2" sauce bowl
214. BA-Australian Butterflies and Christmas Bells round compote
215. BA-Australian Shrike 5 3/4" ruffled sauce bowl
216. M-Australian Shrike 9 1/2", 12 ruffle bowl--A dandy!
217. BA-Australian Kingfisher 9 1/2", 12 ruffle bowl
218. M-Australian Swan 9 1/2", 16 ruffle bowl--Unusual rim treatment and pretty
219. BA-Australian Swan 9", 16 ruffle bowl--vibrant hues
220. BA-Australian 9 3/4", 12 ruffle bowl
221. Yellow Vas-Fenton 2-row Open Edge 5 3/4" ruffled basket
222. Vas-Fenton Acorn 7" ICS bowl--Very pretty for this pattern
223. Scarce A-Fenton Peacock at Urn 9", 8 ruffle bowl--Color galore
224. B-Fenton Ribbon Tie 9", 3 in 1 edge bowl--Gold standard
225. Scarce M-Fenton Coral 8 1/2", 3 in 1 edge bowl--This is a pretty one
226. G-Fenton Holly 8" deep ICS bowl--Awesome purples on this bowl
227. B-Fenton Orange Tree 8 1/4" ICS bowl
228. A-Fenton Peacock and Grape 8 3/4" ruffled bowl--Great eye appeal
229. P-Mlbg Grape Wreath Vt. 5 3/4" ICS bowl--Clover and Feather center, knockout radium
230. Radium M-Mlbg Blackberry Wreath 6" ruffled sauce--Lots of pinks in the center
231. G-Mlbg Blackberry Wreath 6" ruffled sauce
232. Radium M-Mlbg Holly Sprig 6 1/2" tri-corner bowl--Desirable shape and great color
233. P-Mlbg Holly Sprig spade shape nappy--Delightful
234. Radium P-Mlbg Grape Wreath Vt 8" ICS bowl--Eight point star center and boy is this lovely!

235. M-Mlbg Grape Wreath Vt 8" ICS bowl--Eight point star, radium and nice
236. Stunning Radium P-Mlbg Grape Wreath Vt. 8 3/4" ruffled bowl--Eight point star center--Breathtaking!
237. P-Mlbg Hobnail rosebowl--Radium mirrored finish
238. M-Mlbg Swirled Hobnail cuspidor
239. Rare Ice Green-N Daisy and Plume rosebowl with Raspberry interior
240. Radium M-Mlbg Fleur de Lis 9 1/2", 3 in 1 edge, dome base bowl--Check out this gem!
241. P-Fenton Sailboats 6" ruffled bowl--Orange Tree exterior, scarce
242. Sapphire--Fenton Sailboats 6" ruffled bowl
243. G-Fenton Sailboats 6" ruffled bowl
244. B-N Three Fruits stippled 9" plate--Rib exterior, electric hues
245. Pumpkin M-N Three Fruits stippled 9" plate--Wowzer!
246. Ice B-N Nippon PCE bowl--Pretty pastels
247. Ice B-N Hearts and Flowers ruffled bowl--Rainbow pastels
248. W-Fenton Leaf Chain 9 1/2" plate--Vivid pastel hues
249. M-N Good Luck stippled ruffled bowl--Rib exterior
250. Rare B-Fenton Persian Medallion 9 1/4" plate with Bearded Berry exterior--Less than a handful known!
251. G-N Fruits and Flowers stemmed bonbon--Pink and blue center
252. Lime Ice Green-N Peacocks 9" plate--Lots of blues and yellows!
253. Superb M-N Peacock at Urn 10" ICS bowl--Splendid example
254. Ice Green-N Peacock at Urn 10" ICS bowl
255. P-N Peacock at Urn 10" ICS bowl--Classic electric carnival coloration
256. B-N Tree Trunk 9 1/2" vase--Electric purple iridescence
257. Rare and unusual Renninger (?) blue--N Drapery 8 1/2" vase--

WATCH:  **Web Site: www.AWK-SHN.com**

Check out this color!

258. P-Imp Ripple 8" squatty looking vase with wide mouth--
Quite attractive

259. M-N Grape and Cable cologne bottle and stopper--Nicest one
I've seen in awhile

260. G-N Wishbone ruffled, footed bowl

261. P-N Wishbone ruffled, footed bowl--Just as nice as can be

262. G-N Strawberry PCE bowl--Pretty as a speckled pup!

263. M-N Peacocks 9" plate--Pumpkin with lots of pinks, yellows
and greens

264. M-Grape Arbor water pitcher and four tumblers

265. Rare B-Fenton Milady 7 pc water set--Way above average
color

266. M-Fenton Milady 7 pc water set--Pitcher is dark top to
bottom!

267. AO-N Dandelion mug--Wicked good color!

268. Deep G-Fenton 2-row Open Edge JIP hat--Scarce and nice

269. Electric B-N Wishbone footed, ruffled bowl--Oh my!

270. Lime Green Opal-N Nippon PCE bowl--Super pastels,
couple minor rim flaws, exceptionally rare

271. Emerald Green-N Peacock at Urn 5 3/4" ICS bowl--Seldom
seen

272. Pastel AO-N Peacock at Urn 5 3/4" ICS bowl--Another
tough one!

273. Pastel M-N Grape and Cable 11", ruffled bowl--Yellow and
blues all day long

274. M-N Grape and Cable 10 1/2" ICS bowl--The hits just keep
on coming!

275. AO-N Hearts and Flowers compote--Collector favorite

276. Killer M-N Drapery rosebowl--One of the finest and scarce,
too

277. P-N Grape and Cable tumblers--2 x \$

278. M-Fenton Daisy Cut bell

279. M-N round Bushel Basket

280. Pastel M-Imp Loganberry vase--Impressive pinks and
blues

281. P-N Grape Leaves 8 3/4" ruffled bowl

282. A-N Three Fruits Medallion ruffled, spat ftd bowl--Bronze
and purple hues!

283. M-N Three Fruits 9" ruffled bowl--Spectacular pastels!

284. G-N Grape and Cable Vt. 8 1/2" bowl, smooth exterior--
Showy center

285. B-Dugan Windflower 9" plate--Lightly ground base

286. B-N Embroidered Mums ruffled bowl--Lots and lots of
color

287. G-N Leaf Beads rosebowl, Sunflower interior--Rim chip

288. P-N Good Luck ruffled bowl--BW exterior

289. M-5 3/4" round, footed bowl--unknown pattern, we'll call it
Rose Blossom, exterior pattern

290. Lavender Smoke-N Leaf Beads rosebowl--Very different
color and great radium finish

291. B-Fenton Orange Tree loving cup--Radium and nice

292. Vas Opal-Fenton Peacock and Grape 9" ruffled bowl--A
winner for color and scarcity!

293. B-Fenton Ten Mums 8 1/2" CRE bowl--Very different and very
nice!

294. Lav-Fenton Concord 9" plate--Tough to find

295. M-Fenton Leaf Chain 7 3/4" plate--Dark and nice

296. W-Fenton Leaf Chain 7 1/2" plate--Mind blowing pastels

297. P-Dugan Wishbone and Spades 6 1/2" plate--Electric and
outstanding

298. Pumpkin M-N Wild Strawberry 7 3/4" handgrip plate--
Smashing!

299. M-Dugan Persian Garden 6 3/4" plate

300. Electric P-Dugan Grapevine Lattice 7 1/4" plate

301. B-N Fruits and Flowers stemmed bonbon--Electric interior

302. G-N Wild Rose 7" footed bowl--Exquisite colors

303. P-N Raspberry gravy boat--Fantastic iridescence, you would
swear it was green!

304. B-N stippled Peacock at Urn 10" master IC bowl--Scarce and a
crowd pleaser

305. P-N Peacock at Urn 9 3/4" ICS bowl--Electric blue and
purple hues

306. G-Mlbg Peacock at Urn 9 3/4" ICS bowl--Very desirable
bowl

307. Electric G-N Grape and Cable Vt. 8 3/4" ruffled bowl--As pretty
as they get

308. P-N Hearts and Flowers 9 1/4" plate--Purples and golds!

309. Deep P-N Peacocks PCE bowl--Rib exterior, multi-color piece

310. Dark M-Fenton Peacock Tail 9" plate

311. B-Fenton Coin Dot 7" ICS bowl

312. Sapphire-Fenton Little Fishes 6", ball footed, ruffled bowl--
Not many of these around!

313. Scarce Horehound-N Good Luck plate, BW exterior--quite
attractive

314. Sapphire-Fenton Water Lily 6" ruffled, footed bowl

315. G-Fenton Vintage 8" ICS bowl--Breathtaking color for this
pattern

316. Rare Red-Fenton Persian Medallion 5 1/4" ICS bowl--Red
iridescence, too!

317. A-Fenton Persian Medallion 7" round, flared bowl--Not many
of these around either and it is pretty!

318. G-Fenton Persian Medallion 6 1/2" ICS bowl--Super nice
iridescence

319. A-Fenton Concord 8 1/2", 3 in 1 edge bowl--Unusual shape and
so nice

320. A-Fenton Vintage Grape 9" ruffled, footed whimsey bowl
made from a fernery--SCARCE!

321. P-Fenton Vintage Grape 7 3/4", CRE, footed whimsey bowl
made from a fernery--Few known!

322. G-Fenton Lotus and Grape 9" plate--Great color

323. Fantastic W-Fenton Peacock at Urn 9 1/2" plate--Where are
my shades?

324. M-Fenton Feather Stitch 9" ruffled bowl--Great color for
this scarce pattern

325. Scarce G-Fenton Feather Stitch 9 1/2" ruffled bowl--Lots of
blue iridescence

326. Dark Amber-Fenton Dragon and Lotus 8 1/2" ICS bowl

327. Deep B-Fenton Dragon and Lotus 8" ICS bowl--Electric hues

328. Emerald Green-Fenton Dragon and Lotus 8 1/4" ICS bowl--
Makes a statement!

329. B-Fenton Ten Mums 9", CRE bowl--Good looking piece

330. Electric B-N Good Luck ruffled bowl--Rib exterior

331. Dark Ice B-N Peacocks 9" plate--Shimmering pastels

332. W-N Peacocks 9 1/4" plate--Purple and blues

333. Pumpkin M-N Peacock at Urn 10 1/4" ruffled bowl--Much
scarcer than ice cream shape

334. P-N Town Pump--Good color with no damage

335. Pumpkin M-N Daisy and Plume 8" footed, ruffled bowl w/
Raspberry interior--A real looker

336. Scarce Lime G-N Daisy and Plume 8" footed, ruffled bowl
w/ Raspberry interior--Vivid iridescence

337. Ice G-N Fruits and Flowers 7 1/2" ruffled bowl--Scarce size and
color

338. M-N Grape and Cable butter dish w/ lid--A wash with hot
pinks

339. P-N Grape and Cable pin tray

340. Electric P-Dugan Six Petals 8" tri-corner bowl--Awesome
color, great shape!

341. P-Dugan Apple Blossom Twigs 8 1/2", ten ruffle bowl--Tiffany
style iridescence

342. BA-Dugan Double Stem Rose 9 1/4" dome base plate--
Fabulous electric Dugan iridescence

343. G-N Nippon 8 3/4" ruffled bowl--Classic pattern and excellent
color

344. P-N Greek Key 8 3/4" ruffled bowl, Rib exterior--Wonderful
purple and blue electric hues

345. B-N Three Fruits Medallion stippled, spat ftd, ruffled bowl--
Fabulous piece to finish with!

SEND ALL MAIL TO:

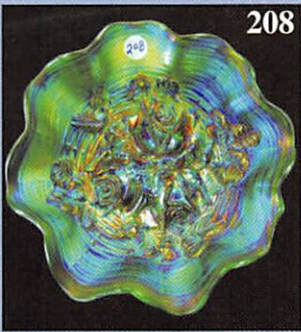
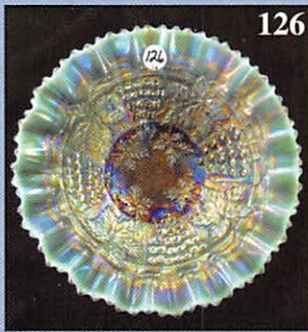
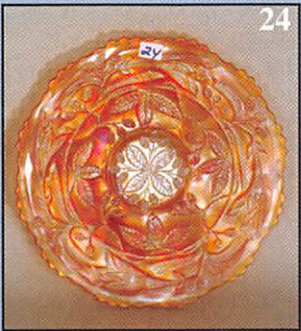
**18350 Hunters Ridge Ct.
Boonville, MO 65233**

SPECIAL NOTE:

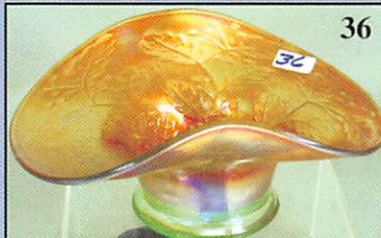
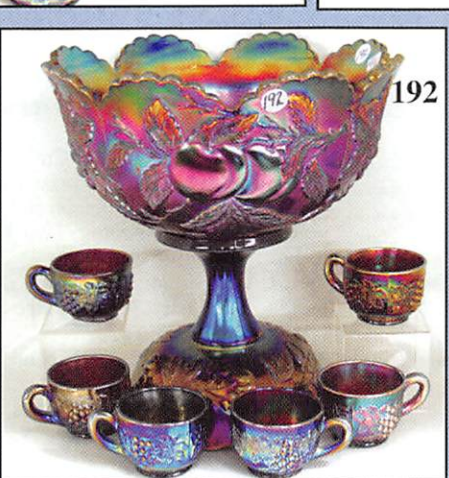
NO SUNDAY CALLS, PLEASE!

**Winning Absentee Bidders will be contacted Monday
through Wednesday of the week following the Auction!**

Thank You!



18th ANNUAL C
NEW YEAR E
Saturday, January 10,
FRIDAY PREVIEW: January 9th - 12:00

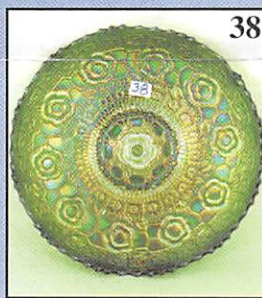
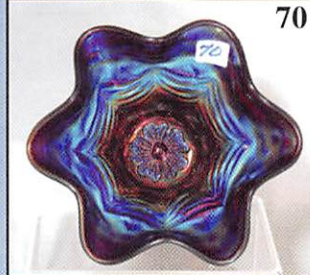
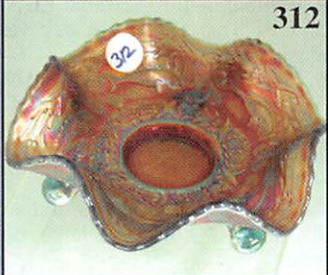
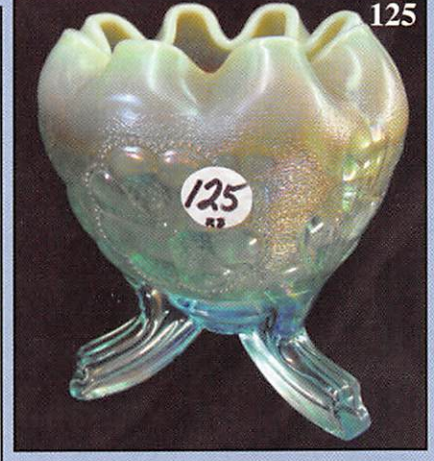
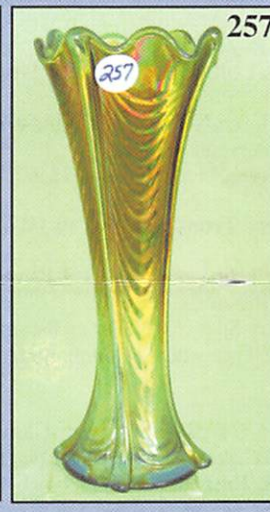
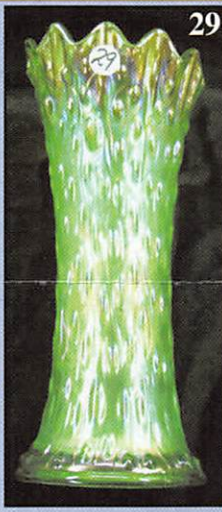


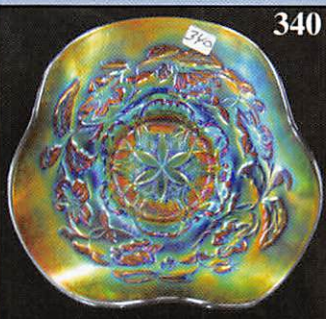
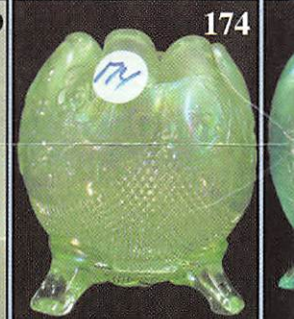
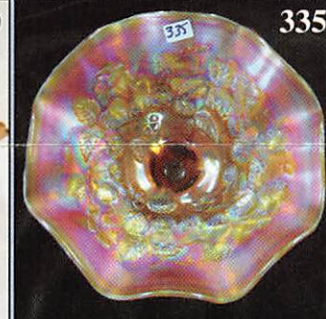
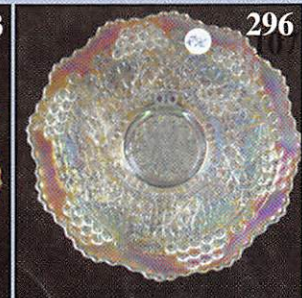
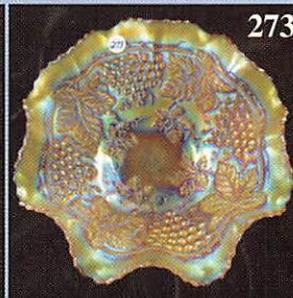
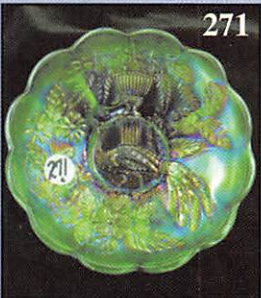
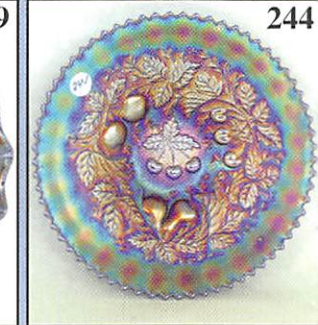
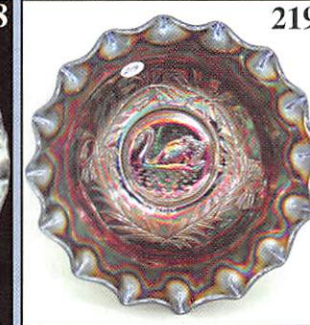
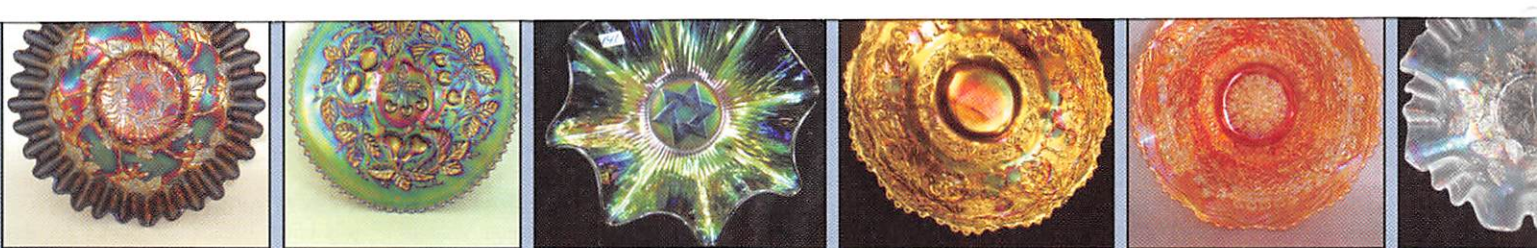
CARNIVAL GLASS

EXTRAVAGANZA

2009 - 9:00 a.m. Sharp

10:00 Noon - 5:00 pm & 7:30 a.m. Auction Day





NO BUYERS

Make Reservations EARLY

Days Inn: 660-882-8624 _____ Comfort Inn: 660-882-5317 _____

ABSENTEE B

PLEASE NOTE: There is a \$6 handling charge for each successful bid which will be added to packing. Your write-in bid will be entered just as if you are present and bidding. **Successful bid number**). Direct mail bids to Auctioneer Mickey Reichel, 18350 Hunters Ridge Ct., Boonville, MO. References. Announcements made day of the auction supercede all printed material. Not Responsible

Call for additional information: 660-882-5292

FAX: 660-882-5292 (evening hours)

E-mail: mreichel@AWK-SHN.com

Held Inside the Mickey

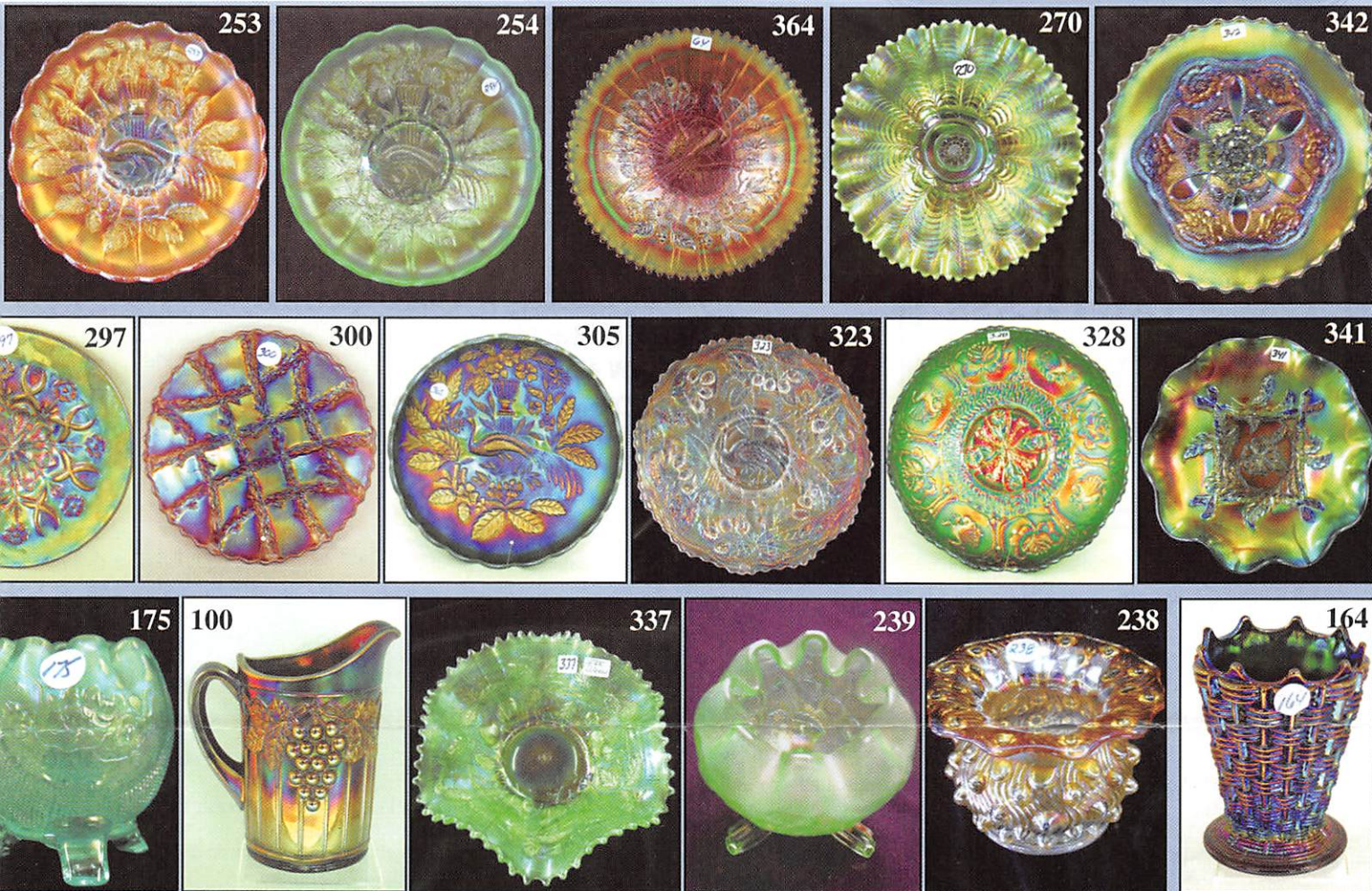
1 Mile North of I-70 on Hwy. 5, Exit 101, Boonville, MO



TERMS: Cash or Good Check,

4% Clerking Fee on all purchases except for p

***** No return on any items once they leave**



PREMIUM ★★ ★
at one of these local motels:

Super 8: 660-882-2900 Holiday Inn: 660-882-6882

SALE POLICY:


to the selling price for all write-in bids. This is in addition to the cost of postage, insurance and
 bidders will be notified in 1 to 3 days by the auctioneer (so be sure to include your phone
 MO 65233-2971. Terms: Cash or Check accepted with proper I.D. and Social Security Number and
 for Accidents or Sold Items. **Call in Bids before Auction Welcome!**
 days or 660-882-5283 evenings before 9:00 p.m.

start FAX transmission after beep)

Web Site: www.awk-shn.com

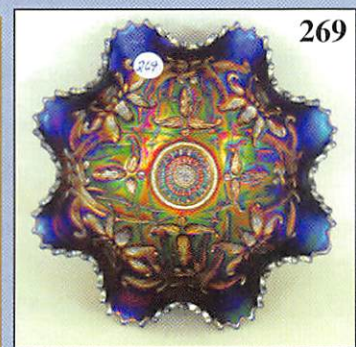
Reichel Auction Center

Missouri 20 Miles West of Columbia, MO on I-70

VISA and MasterCard accepted. 

payment of cash or check. Proper I.D. required.

at the Auction Center (No Exceptions) * * *



SEE REVERSE FOR DETAILS